

# 使用Microsoft Internet Authentication Server的VPN 3000 RADIUS及到期功能

## 目錄

[簡介](#)

[必要條件](#)

[需求](#)

[採用元件](#)

[網路圖表](#)

[慣例](#)

[使用到期功能配置VPN 3000 RADIUS](#)

[配置VPN 3000 Concentrator](#)

[配置Microsoft IAS](#)

[驗證](#)

[疑難排解](#)

[相關資訊](#)

## 簡介

本文檔重點介紹在VPN 3000集中器上使用到期功能配置RADIUS的步驟。為MS-CHAP2配置的Microsoft Internet身份驗證服務(IAS) ( 此功能不支援PAP ) 在本示例中用作RADIUS伺服器。啟用此功能後，VPN使用者啟動Cisco VPN客戶端連線到VPN 3000集中器時，系統會提示他們更改過期的Microsoft Windows密碼。

請參閱[使用RADIUS伺服器配置Cisco VPN 3000系列集中器以支援NT密碼過期功能](#)，以瞭解有關使用RADIUS身份驗證的相同方案的詳細資訊。

## 必要條件

### 需求

本文件沒有特定需求。

### 採用元件

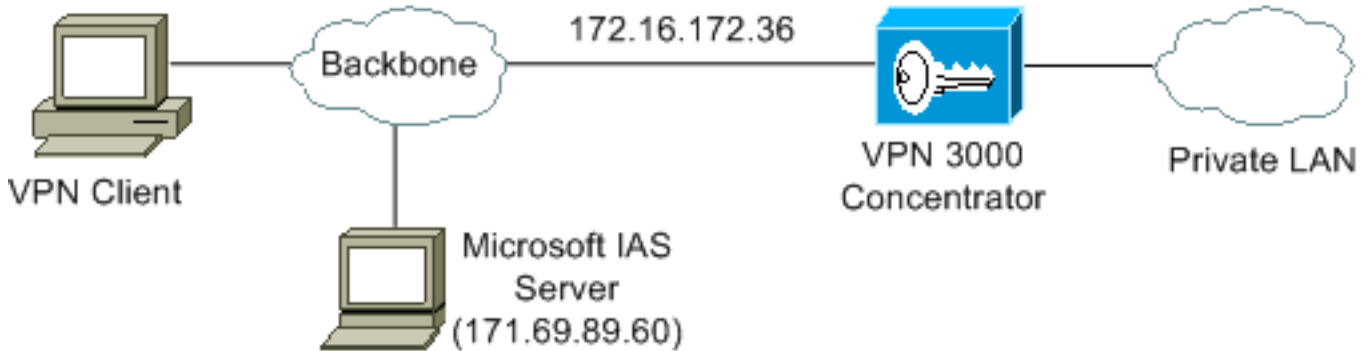
本文中的資訊係根據以下軟體和硬體版本：

- 採用Cisco IOS®軟體版本3.5.3A的Cisco VPN 3000 Concentrator
- Cisco VPN使用者端版本3.5.1C
- Windows 2000伺服器上安裝的Microsoft IAS
- 本文檔中的使用者是在Microsoft Windows 2000 Active Directory Server中定義的

本文中的資訊是根據特定實驗室環境內的裝置所建立。文中使用到的所有裝置皆從已清除（預設）的組態來啟動。如果您的網路正在作用，請確保您已瞭解任何指令可能造成的影響。

## 網路圖表

本檔案會使用以下網路設定：



## 慣例

請參閱[思科技術提示慣例](#)以瞭解更多有關文件慣例的資訊。

## 使用到期功能配置VPN 3000 RADIUS

### 配置VPN 3000 Concentrator

完成以下步驟即可配置VPN 3000集中器。

1. 選擇Configuration > User Management > Groups以配置VPN組。

The screenshot shows the configuration interface for a group named 'windowsuser'. The interface has tabs for 'Identity', 'General', 'IPSec', 'Mode Config', 'Client FW', 'HW Client', and 'PPTP/L2TP'. The 'Identity Parameters' section is active and contains the following table:

| Attribute  | Value                | Description   |
|------------|----------------------|---|
| Group Name | windowsuser          | Enter a unique name for the group.  |
| Password   | XXXXXXXXXXXXXXXXXXXX | Enter the password for the group.   |
| Verify     | XXXXXXXXXXXXXXXXXXXX | Verify the group's password.  |
| Type       | Internal             | External groups are configured on an external authentication server (e.g. RADIUS). Internal groups are configured on the VPN 3000 Concentrator's Internal Database. |

At the bottom of the form, there are 'Apply' and 'Cancel' buttons.

2. 在IPSec頁籤下，將「Authentication」表示的Xauth方法指定為「RADIUS with Expiry」。

| IPSec Parameters             |                                     |                                     |   |
|------------------------------|-------------------------------------|-------------------------------------|---|
| Attribute                    | Value                               | Inherit?                            | Description   |
| IPSec SA                     | ESP-3DES-MD5                        | <input checked="" type="checkbox"/> | Select the group's IPSec Security Association.  |
| IKE Peer Identity Validation | If supported by certificate         | <input checked="" type="checkbox"/> | Select whether or not to validate the identity of the peer using the peer's certificate.  |
| IKE Keepalives               | <input checked="" type="checkbox"/> | <input checked="" type="checkbox"/> | Check to enable the use of IKE keepalives for members of this group.  |
| Tunnel Type                  | Remote Access                       | <input checked="" type="checkbox"/> | Select the type of tunnel for this group. Update the Remote Access parameters below as needed.  |
| Remote Access Parameters     |                                     |                                     |   |
| Group Lock                   | <input type="checkbox"/>            | <input checked="" type="checkbox"/> | Lock users into this group.   |
| Authentication               | RADIUS with Expiry                  | <input type="checkbox"/>            | Select the authentication method for members of this group. This parameter does not apply to <b>Individual User Authentication</b> .  |
| IPComp                       | None                                | <input checked="" type="checkbox"/> | Select the method of IP Compression for members of this group.  |
| Reauthentication on Rekey    | <input type="checkbox"/>            | <input checked="" type="checkbox"/> | Check to reauthenticate the user on an IKE (Phase-1) rekey.   |
| Mode Configuration           | <input checked="" type="checkbox"/> | <input checked="" type="checkbox"/> | Check to initiate the exchange of Mode Configuration parameters with the client. This must be checked if version 2.5 (or earlier) of the the Altiga/Cisco client are being used by members of this group. |

Apply Cancel

3. 選擇 Configuration > System > Servers > Authentication 以定義 RADIUS 伺服器。

Configuration | System | Servers | Authentication | Modify

Change a configured user authentication server.

Server Type: RADIUS

Authentication Server: 171.69.89.60

Server Port: 1645

Timeout: 4

Retries: 2

Server Secret: [masked]

Verify: [masked]

Applying Selecting *Internal Server* will let you add users to the internal user database.

Enter IP address or hostname.

Enter 0 for default port (1645).

Enter the timeout for this server (seconds).

Enter the number of retries for this server.

Enter the RADIUS server secret.

Re-enter the secret.

Apply Cancel

4. 定義 IP 地址分配方法。此示例使用在 VPN 3000 集中器本地定義的 IP 地址池。

Configuration | System | Address Management | Assignment

This section presents Address Assignment options. Each of the following methods are tried, in order, until an address is found.

**Use Client Address**  Check to use the IP address supplied by the client. This can be overridden by user/group configuration.

**Use Address from Authentication Server**  Check to use an IP address retrieved from an authentication server for the client.

**Use DHCP**  Check to use DHCP to obtain an IP address for the client.

**Use Address Pools**  Check to use internal address pool configuration to obtain an IP address for the client.

Apply Cancel

## 5. 定義IP地址池。

Configuration | System | Address Management | Pools Save

This section lets you configure IP Address Pools.

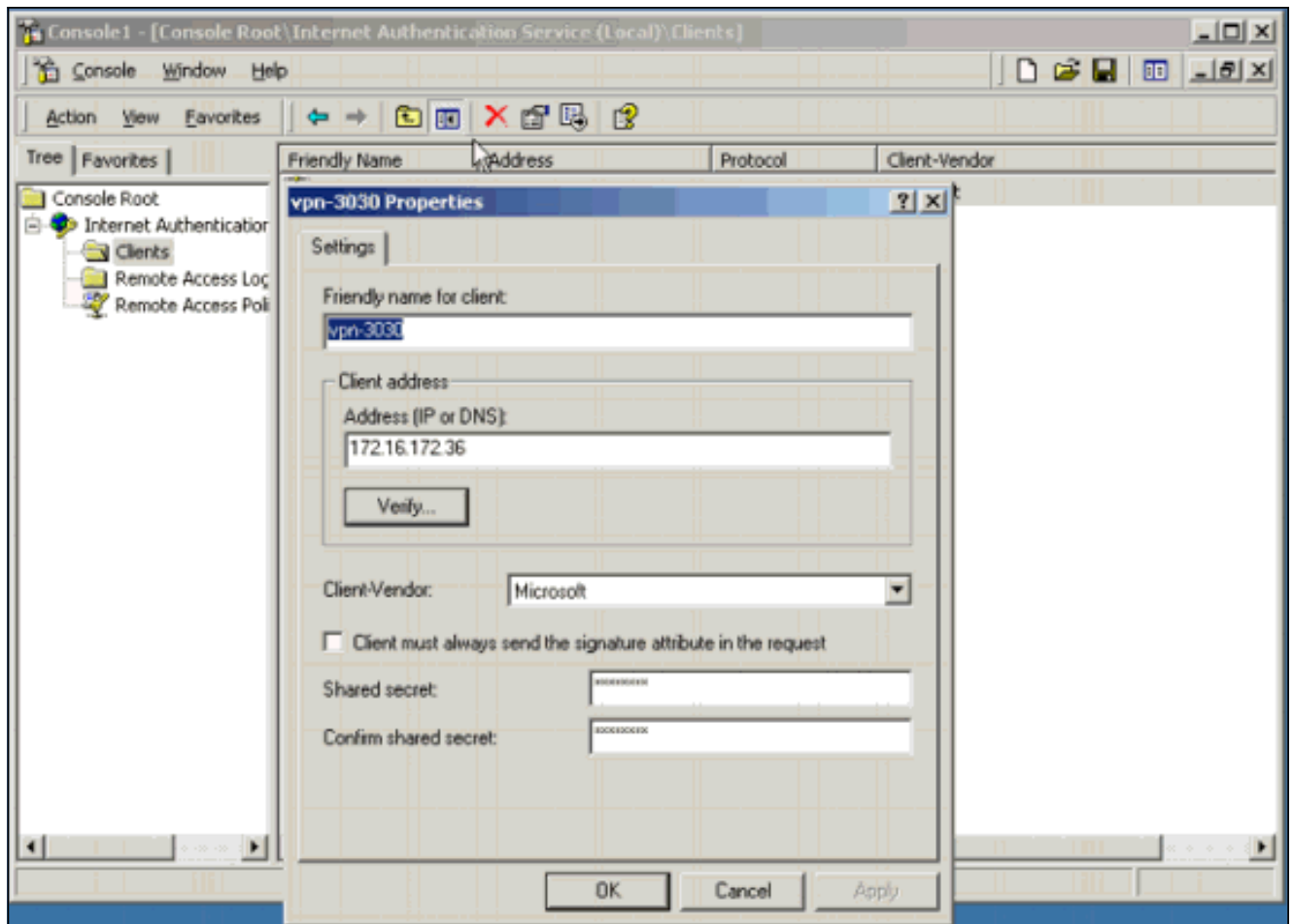
Click the **Add** button to add a pool entry, or select a pool and click **Modify**, **Delete** or **Move**.

| IP Pool Entry             | Actions  |
|---------------------------|--|
| 10.10.10.1 - 10.10.10.254 | <input type="button" value="Add"/><br><input type="button" value="Modify"/><br><input type="button" value="Delete"/><br><input type="button" value="Move Up"/><br><input type="button" value="Move Down"/> |

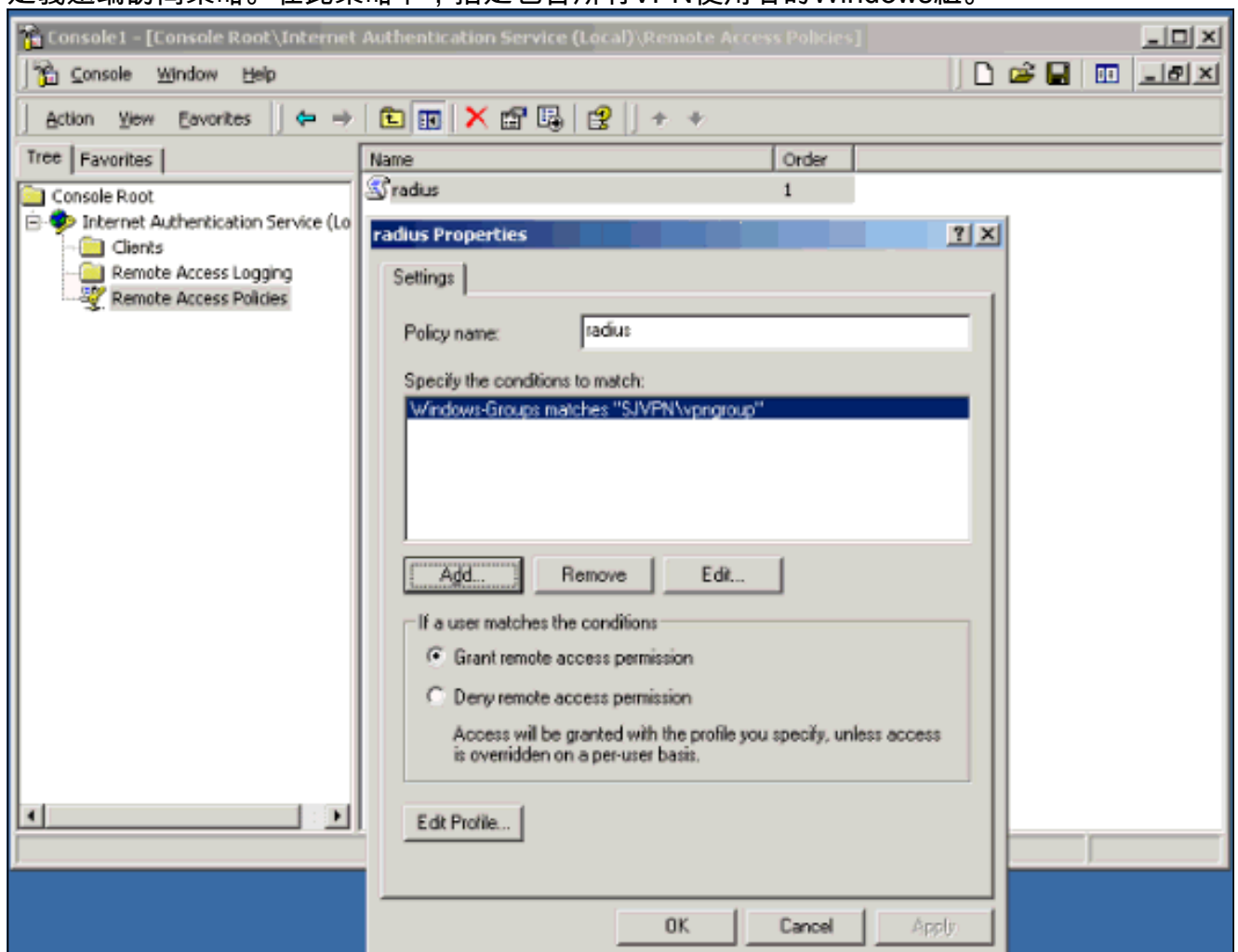
## 配置Microsoft IAS

完成以下步驟以配置Microsoft IAS。

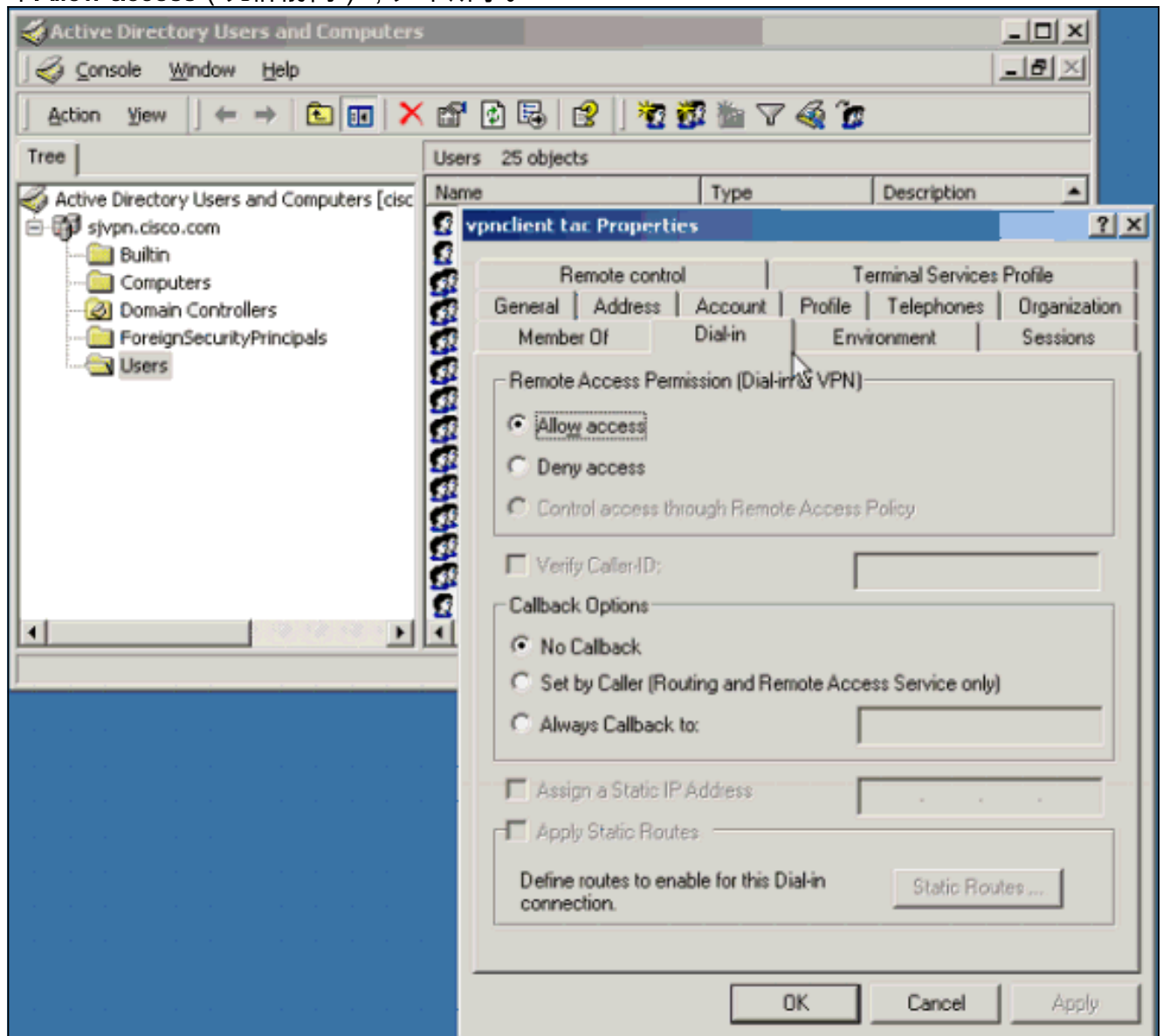
1. 將VPN 3000 Concentrator定義為客戶端。注意：選擇Microsoft作為客戶端 — 供應商，以獲得RADIUS要求的具有到期功能的Microsoft供應商特定屬性(VSA)的支援。



2. 定義遠端訪問策略。在此策略下，指定包含所有VPN使用者的Windows組。

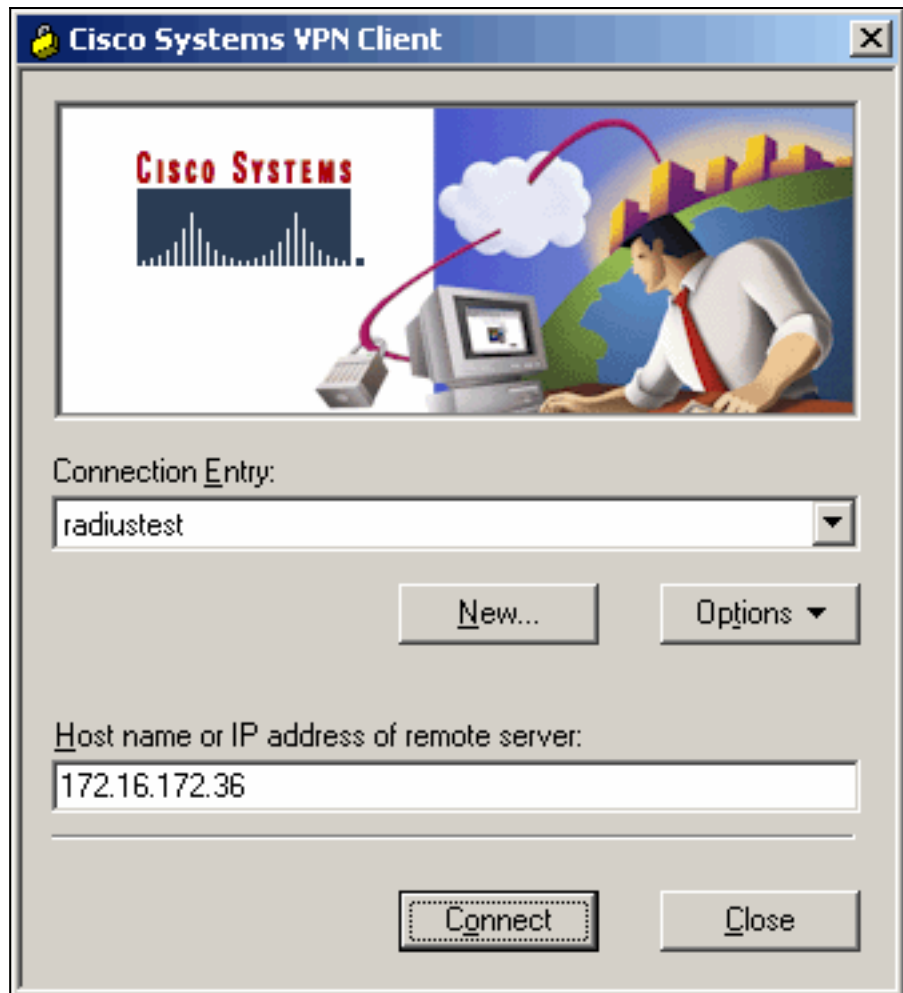


注意：Windows使用者必須在使用者配置檔案的「遠端訪問許可權（撥入或VPN）」部分下選中Allow access（允許訪問），如下所示。

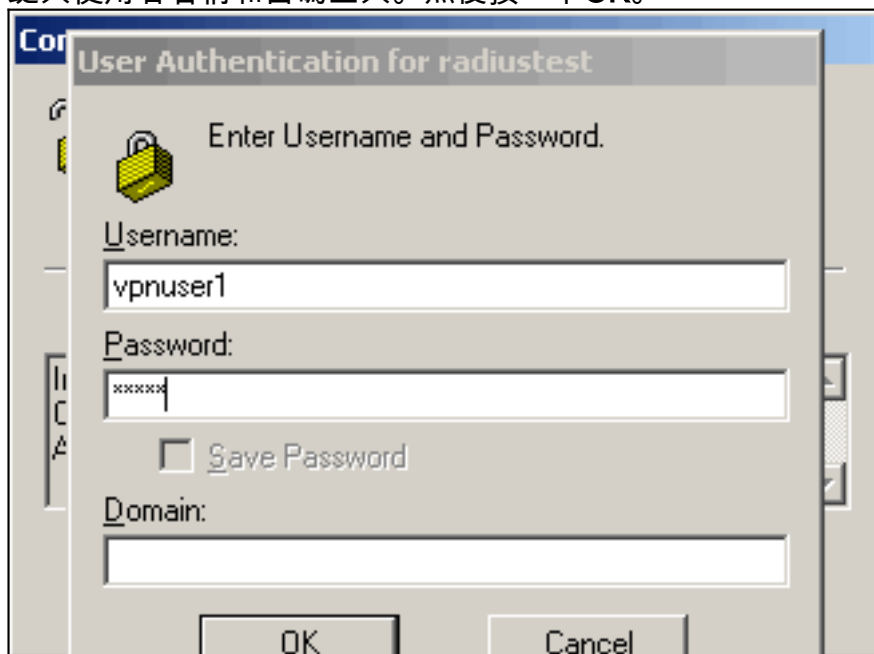


## 驗證

以下範例示範在Windows密碼到期時，含到期功能的RADIUS如何運作。VPN使用者會收到密碼已過期的通知，並提示您輸入新密碼。



1. 啟動Cisco VPN客戶端。
2. 鍵入使用者名稱和密碼登入。然後按一下OK。



3. Windows密碼到期時，系統將提示您更改密碼。鍵入新密碼。再次鍵入以確認，然後按一下



## 疑難排解

此部分顯示在隧道協商期間在VPN 3000集中器上捕獲的事件日誌。請參閱粗體部分，瞭解Microsoft VSA如何在IAS和VPN 3000集中器之間傳遞，以通知VPN使用者密碼已過期，並將新的Windows密碼從VPN使用者返回到Windows使用者資料庫。

```
1 08/06/2002 16:45:40.920 SEV=8 AUTHDBG/1 RPT=263
AUTH_Open() returns 102

2 08/06/2002 16:45:40.920 SEV=7 AUTH/12 RPT=264
Authentication session opened: handle = 102

3 08/06/2002 16:45:40.920 SEV=8 AUTHDBG/3 RPT=302
AUTH_PutAttrTable(102, 742784)

4 08/06/2002 16:45:40.920 SEV=8 AUTHDBG/6 RPT=183
AUTH_GroupAuthenticate(102, 9aa2e24, 4983ac)

5 08/06/2002 16:45:40.920 SEV=8 AUTHDBG/59 RPT=302
AUTH_BindServer(9a03fcc, 0, 0)

6 08/06/2002 16:45:40.920 SEV=9 AUTHDBG/69 RPT=302
Auth Server 18cdfa4 has been bound to ACB 9a03fcc, sessions = 1

7 08/06/2002 16:45:40.920 SEV=8 AUTHDBG/65 RPT=302
AUTH_CreateTimer(9a03fcc, 0, 0)

8 08/06/2002 16:45:40.920 SEV=9 AUTHDBG/72 RPT=302
Reply timer created: handle = 5A0C001B

9 08/06/2002 16:45:40.920 SEV=8 AUTHDBG/61 RPT=302
AUTH_BuildMsg(9a03fcc, 0, 0)

10 08/06/2002 16:45:40.920 SEV=8 AUTHDBG/64 RPT=302
```



AUTH\_StartTimer(9a03fcc, 0, 0)

11 08/06/2002 16:45:40.920 SEV=9 AUTHDBG/73 RPT=302  
Reply timer started: handle = 5A0C001B, timestamp = 355273988, timeout = 30000

12 08/06/2002 16:45:40.920 SEV=8 AUTHDBG/62 RPT=302  
AUTH\_SndRequest(9a03fcc, 0, 0)

13 08/06/2002 16:45:40.920 SEV=8 AUTHDBG/50 RPT=477  
IntDB\_Decode(62fd1a8, 146)

14 08/06/2002 16:45:40.920 SEV=10 AUTHDECODE/12 RPT=1  
IntDB: Type = 1 (0x01) User-Name

15 08/06/2002 16:45:40.920 SEV=10 AUTHDECODE/13 RPT=1  
IntDB: Length = 11 (0x0B)

16 08/06/2002 16:45:40.920 SEV=10 AUTHDECODE/14 RPT=1  
IntDB: Value (String) =

17 08/06/2002 16:45:40.920 SEV=10 AUTHDECODE/0 RPT=1  
0000: 77696E64 6F777375 736572 windowsuser

18 08/06/2002 16:45:40.920 SEV=10 AUTHDECODE/12 RPT=2  
IntDB: Type = 5 (0x05) NAS-Port

19 08/06/2002 16:45:40.920 SEV=10 AUTHDECODE/13 RPT=2  
IntDB: Length = 4 (0x04)

20 08/06/2002 16:45:40.920 SEV=10 AUTHDECODE/15 RPT=1  
IntDB: Value (Integer) = 0 (0x0000)

21 08/06/2002 16:45:40.920 SEV=10 AUTHDECODE/12 RPT=3  
IntDB: Type = 6 (0x06) Service-Type

22 08/06/2002 16:45:40.920 SEV=10 AUTHDECODE/13 RPT=3  
IntDB: Length = 4 (0x04)

23 08/06/2002 16:45:40.920 SEV=10 AUTHDECODE/15 RPT=2  
IntDB: Value (Integer) = 2 (0x0002)

24 08/06/2002 16:45:40.920 SEV=10 AUTHDECODE/12 RPT=4  
IntDB: Type = 7 (0x07) Framed-Protocol

25 08/06/2002 16:45:40.920 SEV=10 AUTHDECODE/13 RPT=4  
IntDB: Length = 4 (0x04)

26 08/06/2002 16:45:40.920 SEV=10 AUTHDECODE/15 RPT=3  
IntDB: Value (Integer) = 1 (0x0001)

27 08/06/2002 16:45:40.920 SEV=10 AUTHDECODE/12 RPT=5

IntDB: Type = 66 (0x42) Tunnel-Client-Endpoint

28 08/06/2002 16:45:40.920 SEV=10 AUTHDECODE/13 RPT=5  
IntDB: Length = 12 (0x0C)

29 08/06/2002 16:45:40.920 SEV=10 AUTHDECODE/14 RPT=2  
IntDB: Value (String) =

30 08/06/2002 16:45:40.920 SEV=10 AUTHDECODE/0 RPT=2  
0000: 3137312E 36392E38 392E3930 171.69.89.90

31 08/06/2002 16:45:40.920 SEV=10 AUTHDECODE/12 RPT=6  
IntDB: Type = 4118 (0x1016) Authentication-Server-Type

32 08/06/2002 16:45:40.920 SEV=10 AUTHDECODE/13 RPT=6  
IntDB: Length = 4 (0x04)

33 08/06/2002 16:45:40.920 SEV=10 AUTHDECODE/15 RPT=4  
IntDB: Value (Integer) = 5 (0x0005)

34 08/06/2002 16:45:40.920 SEV=8 AUTHDBG/47 RPT=477  
IntDB\_Xmt(9a03fcc)

35 08/06/2002 16:45:40.920 SEV=9 AUTHDBG/71 RPT=302  
xmit\_cnt = 1

36 08/06/2002 16:45:40.920 SEV=8 AUTHDBG/47 RPT=478  
IntDB\_Xmt(9a03fcc)

37 08/06/2002 16:45:41.020 SEV=8 AUTHDBG/49 RPT=239  
IntDB\_Match(9a03fcc, 62f1c4c)

38 08/06/2002 16:45:41.020 SEV=8 AUTHDBG/63 RPT=302  
AUTH\_RcvReply(9a03fcc, 0, 0)

39 08/06/2002 16:45:41.020 SEV=8 AUTHDBG/50 RPT=478  
IntDB\_Decode(62f1c4c, 170)

40 08/06/2002 16:45:41.020 SEV=10 AUTHDECODE/12 RPT=7  
IntDB: Type = 1 (0x01) User-Name

41 08/06/2002 16:45:41.020 SEV=10 AUTHDECODE/13 RPT=7  
IntDB: Length = 11 (0x0B)

42 08/06/2002 16:45:41.020 SEV=10 AUTHDECODE/14 RPT=3  
IntDB: Value (String) =

43 08/06/2002 16:45:41.020 SEV=10 AUTHDECODE/0 RPT=3  
0000: 77696E64 6F777375 736572 windowsuser

44 08/06/2002 16:45:41.020 SEV=10 AUTHDECODE/12 RPT=8  
IntDB: Type = 4109 (0x100D) IPSec-Authentication

45 08/06/2002 16:45:41.020 SEV=10 AUTHDECODE/13 RPT=8  
IntDB: Length = 4 (0x04)

46 08/06/2002 16:45:41.020 SEV=10 AUTHDECODE/15 RPT=5  
IntDB: Value (Integer) = 6 (0x0006)

47 08/06/2002 16:45:41.020 SEV=10 AUTHDECODE/12 RPT=9  
IntDB: Type = 4123 (0x101B) Split-Tunnel-Inclusion-List

48 08/06/2002 16:45:41.020 SEV=10 AUTHDECODE/13 RPT=9  
IntDB: Length = 4 (0x04)

49 08/06/2002 16:45:41.020 SEV=10 AUTHDECODE/14 RPT=4  
IntDB: Value (String) =

50 08/06/2002 16:45:41.020 SEV=10 AUTHDECODE/0 RPT=4  
0000: 74657374 test

51 08/06/2002 16:45:41.020 SEV=10 AUTHDECODE/12 RPT=10  
IntDB: Type = 4151 (0x1037) Split-Tunneling-Policy

52 08/06/2002 16:45:41.020 SEV=10 AUTHDECODE/13 RPT=10  
IntDB: Length = 4 (0x04)

53 08/06/2002 16:45:41.020 SEV=10 AUTHDECODE/15 RPT=6  
IntDB: Value (Integer) = 1 (0x0001)

54 08/06/2002 16:45:41.020 SEV=8 AUTHDBG/48 RPT=239  
IntDB\_Rcv(9a03fcc)

55 08/06/2002 16:45:41.020 SEV=8 AUTHDBG/66 RPT=302  
AUTH\_DeleteTimer(9a03fcc, 0, 0)

56 08/06/2002 16:45:41.020 SEV=9 AUTHDBG/74 RPT=302  
Reply timer stopped: handle = 5A0C001B, timestamp = 355273998

57 08/06/2002 16:45:41.020 SEV=8 AUTHDBG/58 RPT=302  
AUTH\_Callback(9a03fcc, 0, 0)

58 08/06/2002 16:45:41.020 SEV=6 AUTH/41 RPT=218 171.69.89.90  
Authentication successful: handle = 102, server = Internal,  
group = windowsuser

59 08/06/2002 16:45:41.020 SEV=8 AUTHDBG/4 RPT=288  
AUTH\_GetAttrTable(102, 742a30)

60 08/06/2002 16:45:41.020 SEV=8 AUTHDBG/2 RPT=263  
AUTH\_Close(102)

61 08/06/2002 16:45:41.020 SEV=8 AUTHDBG/60 RPT=302  
AUTH\_UnbindServer(9a03fcc, 0, 0)

62 08/06/2002 16:45:41.020 SEV=9 AUTHDBG/70 RPT=302  
Auth Server 18cdfa4 has been unbound from ACB 9a03fcc, sessions = 0

63 08/06/2002 16:45:41.020 SEV=8 AUTHDBG/10 RPT=263  
AUTH\_Int\_FreeAuthCB(9a03fcc)

64 08/06/2002 16:45:41.020 SEV=7 AUTH/13 RPT=264  
Authentication session closed: handle = 102

65 08/06/2002 16:45:46.610 SEV=8 AUTHDBG/1 RPT=264  
AUTH\_Open() returns 103

66 08/06/2002 16:45:46.610 SEV=7 AUTH/12 RPT=265  
Authentication session opened: handle = 103

67 08/06/2002 16:45:46.610 SEV=8 AUTHDBG/3 RPT=303  
AUTH\_PutAttrTable(103, 7429b8)

68 08/06/2002 16:45:46.610 SEV=8 AUTHDBG/5 RPT=56  
AUTH\_Authenticate(103, 500a278, 4cad38)

69 08/06/2002 16:45:46.610 SEV=8 AUTHDBG/59 RPT=303  
AUTH\_BindServer(9aa46fc, 0, 0)

70 08/06/2002 16:45:46.610 SEV=9 AUTHDBG/69 RPT=303  
Auth Server 18cela4 has been bound to ACB 9aa46fc, sessions = 1

71 08/06/2002 16:45:46.610 SEV=8 AUTHDBG/65 RPT=303  
AUTH\_CreateTimer(9aa46fc, 0, 0)

72 08/06/2002 16:45:46.610 SEV=9 AUTHDBG/72 RPT=303  
Reply timer created: handle = 5A0E0016

73 08/06/2002 16:45:46.610 SEV=8 AUTHDBG/61 RPT=303  
AUTH\_BuildMsg(9aa46fc, 0, 0)

74 08/06/2002 16:45:46.610 SEV=8 AUTHDBG/27 RPT=64  
Radius\_Build(9aa46fc)

75 08/06/2002 16:45:46.610 SEV=8 AUTHDBG/64 RPT=303  
AUTH\_StartTimer(9aa46fc, 0, 0)

76 08/06/2002 16:45:46.610 SEV=9 AUTHDBG/73 RPT=303  
Reply timer started: handle = 5A0E0016, timestamp = 355274557, timeout = 4000

**77 08/06/2002 16:45:46.610 SEV=8 AUTHDBG/62 RPT=303**  
**AUTH\_SndRequest(9aa46fc, 0, 0)**

78 08/06/2002 16:45:46.610 SEV=8 AUTHDBG/31 RPT=127  
Radius\_Decode(62f1c4c, 156)

79 08/06/2002 16:45:46.610 SEV=13 AUTHDECODE/0 RPT=5  
0000: 0122009C 7F70A83B E37B9B27 31668A07 .". . . . p . i . { . ' 1 f . .  
0010: 1089C0A4 010A7670 6E757365 72310506 . . . . . v p n u s e r 1 . .  
0020: 0000041C 06060000 00020706 00000001 . . . . .  
0030: 420E3137 312E3639 2E38392E 39301A18 B . 1 7 1 . 6 9 . 8 9 . 9 0 . .  
0040: 00000137 0B12BE14 D10DA7ED 8A00FD25 . . . 7 . . . . . %  
0050: 47B90956 3B191A3A 00000137 19340000 G . . V i . . . : . . . . 7 . 4 . .  
0060: 62B6A996 DD4962AE 05FA5AAF FDDA96A9 b . . . . I b . . . Z . . . . .  
0070: 00000000 00000000 3CA2008E A03CABCF . . . . . < . . . . < . .  
0080: 73FB28E0 D1560A01 D96AAE3B BFB6DD42 s . ( . . V . . . j . i . . . . B  
0090: 0406AC10 AC243D06 00000005 . . . . . \$ = . . . . .

89 08/06/2002 16:45:46.610 SEV=10 AUTHDECODE/1 RPT=1  
Radius: Code = 1 (0x01)

90 08/06/2002 16:45:46.610 SEV=10 AUTHDECODE/2 RPT=1  
Radius: Identifier = 34 (0x22)

91 08/06/2002 16:45:46.610 SEV=10 AUTHDECODE/3 RPT=1  
Radius: Length = 156 (0x009C)

92 08/06/2002 16:45:46.610 SEV=10 AUTHDECODE/4 RPT=1  
Radius: Vector:

93 08/06/2002 16:45:46.610 SEV=10 AUTHDECODE/0 RPT=6  
0000: 7F70A83B E37B9B27 31668A07 1089C0A4 . p . i . { . ' 1 f . . . . .

94 08/06/2002 16:45:46.610 SEV=10 AUTHDECODE/5 RPT=1  
Radius: Type = 1 (0x01) User-Name

95 08/06/2002 16:45:46.610 SEV=10 AUTHDECODE/6 RPT=1  
Radius: Length = 10 (0x0A)

96 08/06/2002 16:45:46.610 SEV=10 AUTHDECODE/7 RPT=1  
Radius: Value (String) =



Radius: Type = 26 (0x1A) Vendor-Specific

119 08/06/2002 16:45:46.610 SEV=10 AUTHDECODE/6 RPT=8  
Radius: Length = 58 (0x3A)

120 08/06/2002 16:45:46.610 SEV=10 AUTHDECODE/10 RPT=2  
Radius: Vendor ID = 311 (0x00000137)

121 08/06/2002 16:45:46.610 SEV=10 AUTHDECODE/5 RPT=9  
Radius: Type = 25 (0x19) MS-CHAP2-Response

122 08/06/2002 16:45:46.610 SEV=10 AUTHDECODE/6 RPT=9  
Radius: Length = 52 (0x34)

123 08/06/2002 16:45:46.610 SEV=10 AUTHDECODE/7 RPT=4  
Radius: Value (String) =

124 08/06/2002 16:45:46.610 SEV=10 AUTHDECODE/0 RPT=10  
0000: 000062B6 A996DD49 62AE05FA 5AAFFDDA ..b....Ib...Z...  
0010: 96A90000 00000000 00003CA2 008EA03C .....<.....<  
0020: ABCF73FB 28E0D156 0A01D96A AE3BBFB6 ..s(..V...j.i...  
0030: DD42 .B

128 08/06/2002 16:45:46.620 SEV=10 AUTHDECODE/5 RPT=10  
Radius: Type = 4 (0x04) NAS-IP-Address

129 08/06/2002 16:45:46.620 SEV=10 AUTHDECODE/6 RPT=10  
Radius: Length = 6 (0x06)

130 08/06/2002 16:45:46.620 SEV=10 AUTHDECODE/9 RPT=1  
Radius: Value (IP Address) = 172.16.172.36 (0xAC10AC24)

131 08/06/2002 16:45:46.620 SEV=10 AUTHDECODE/5 RPT=11  
Radius: Type = 61 (0x3D) NAS-Port-Type

132 08/06/2002 16:45:46.620 SEV=10 AUTHDECODE/6 RPT=11  
Radius: Length = 6 (0x06)

133 08/06/2002 16:45:46.620 SEV=10 AUTHDECODE/11 RPT=4  
Radius: Value (Hex) = 0x5

134 08/06/2002 16:45:46.620 SEV=8 AUTHDBG/28 RPT=64  
Radius\_Xmt(9aa46fc)

135 08/06/2002 16:45:46.620 SEV=9 AUTHDBG/71 RPT=303  
xmit\_cnt = 1

136 08/06/2002 16:45:46.710 SEV=8 AUTHDBG/30 RPT=64  
Radius\_Match(9aa46fc, 5004a10), id = 0x22, rcvd = 0x22

**137 08/06/2002 16:45:46.710 SEV=8 AUTHDBG/63 RPT=303  
AUTH\_RcvReply(9aa46fc, 0, 0)**

138 08/06/2002 16:45:46.710 SEV=8 AUTHDBG/31 RPT=128  
Radius\_Decode(5004a10, 42)

139 08/06/2002 16:45:46.710 SEV=13 AUTHDECODE/0 RPT=11  
0000: 0322002A CCDF6607 AB8B6D51 9B17CFE1 .".\*...f...mQ....  
0010: 6A11AE2E 1A160000 01370210 00453D36 j.....7...E=6  
0020: 34382052 3D302056 3D33 48 R=0 V=3

142 08/06/2002 16:45:46.710 SEV=10 AUTHDECODE/1 RPT=2  
Radius: Code = 3 (0x03)

143 08/06/2002 16:45:46.710 SEV=10 AUTHDECODE/2 RPT=2  
Radius: Identifier = 34 (0x22)

144 08/06/2002 16:45:46.710 SEV=10 AUTHDECODE/3 RPT=2  
Radius: Length = 42 (0x002A)

145 08/06/2002 16:45:46.710 SEV=10 AUTHDECODE/4 RPT=2  
Radius: Vector:

146 08/06/2002 16:45:46.710 SEV=10 AUTHDECODE/0 RPT=12  
0000: CCDF6607 AB8B6D51 9B17CFE1 6A11AE2E ..f...mQ....j...

**147 08/06/2002 16:45:46.710 SEV=10 AUTHDECODE/5 RPT=12**  
**Radius: Type = 26 (0x1A) Vendor-Specific**

**148 08/06/2002 16:45:46.710 SEV=10 AUTHDECODE/6 RPT=12**  
**Radius: Length = 22 (0x16)**

**149 08/06/2002 16:45:46.710 SEV=10 AUTHDECODE/10 RPT=3**  
**Radius: Vendor ID = 311 (0x00000137)**

**150 08/06/2002 16:45:46.710 SEV=10 AUTHDECODE/5 RPT=13**  
**Radius: Type = 2 (0x02) MS-CHAP-Error**

151 08/06/2002 16:45:46.710 SEV=10 AUTHDECODE/6 RPT=13  
Radius: Length = 16 (0x10)

152 08/06/2002 16:45:46.710 SEV=10 AUTHDECODE/7 RPT=5  
Radius: Value (String) =

153 08/06/2002 16:45:46.710 SEV=10 AUTHDECODE/0 RPT=13  
0000: 00453D36 34382052 3D302056 3D33 .E=648 R=0 V=3

154 08/06/2002 16:45:46.710 SEV=8 AUTHDBG/29 RPT=64  
Radius\_Rcv(9aa46fc)

155 08/06/2002 16:45:46.710 SEV=8 AUTHDBG/66 RPT=303  
AUTH\_DeleteTimer(9aa46fc, 0, 0)

156 08/06/2002 16:45:46.710 SEV=9 AUTHDBG/74 RPT=303  
Reply timer stopped: handle = 5A0E0016, timestamp = 355274567

157 08/06/2002 16:45:46.710 SEV=8 AUTHDBG/58 RPT=303  
AUTH\_Callback(9aa46fc, 0, 0)

**158 08/06/2002 16:45:46.710 SEV=3 AUTH/5 RPT=42 171.69.89.90**  
**Authentication rejected: Reason = Password expired**  
**handle = 103, server = 171.69.89.60, user = vpnuser1, domain =**

160 08/06/2002 16:45:46.710 SEV=8 AUTHDBG/4 RPT=289  
AUTH\_GetAttrTable(103, 743aa8)

161 08/06/2002 16:45:46.710 SEV=8 AUTHDBG/4 RPT=290  
AUTH\_GetAttrTable(103, 743ad8)

162 08/06/2002 16:45:46.710 SEV=8 AUTHDBG/60 RPT=303  
AUTH\_UnbindServer(9aa46fc, 0, 0)

163 08/06/2002 16:45:46.710 SEV=9 AUTHDBG/70 RPT=303

Auth Server 18cela4 has been unbound from ACB 9aa46fc, sessions = 0

164 08/06/2002 16:45:50.480 SEV=8 AUTHDBG/3 RPT=304  
AUTH\_PutAttrTable(103, 742898)

165 08/06/2002 16:45:50.480 SEV=8 AUTHDBG/5 RPT=57  
AUTH\_Authenticate(103, 500a278, 4cad38)

166 08/06/2002 16:45:50.480 SEV=8 AUTHDBG/59 RPT=304  
AUTH\_BindServer(9aa46fc, 0, 0)

167 08/06/2002 16:45:50.480 SEV=9 AUTHDBG/69 RPT=304  
Auth Server 18cela4 has been bound to ACB 9aa46fc, sessions = 1

168 08/06/2002 16:45:50.480 SEV=8 AUTHDBG/65 RPT=304  
AUTH\_CreateTimer(9aa46fc, 0, 0)

169 08/06/2002 16:45:50.480 SEV=9 AUTHDBG/72 RPT=304  
Reply timer created: handle = 5A100016

170 08/06/2002 16:45:50.480 SEV=8 AUTHDBG/61 RPT=304  
AUTH\_BuildMsg(9aa46fc, 0, 0)

171 08/06/2002 16:45:50.480 SEV=8 AUTHDBG/27 RPT=65  
Radius\_Build(9aa46fc)

172 08/06/2002 16:45:50.480 SEV=8 AUTHDBG/64 RPT=304  
AUTH\_StartTimer(9aa46fc, 0, 0)

173 08/06/2002 16:45:50.480 SEV=9 AUTHDBG/73 RPT=304  
Reply timer started: handle = 5A100016, timestamp = 355274944, timeout = 4000

174 08/06/2002 16:45:50.480 SEV=8 AUTHDBG/62 RPT=304  
AUTH\_SndRequest(9aa46fc, 0, 0)

175 08/06/2002 16:45:50.480 SEV=8 AUTHDBG/31 RPT=129  
Radius\_Decode(9a03ba8, 726)

176 08/06/2002 16:45:50.480 SEV=13 AUTHHDECODE/0 RPT=14  
0000: 012302D6 E8317738 275469B7 A7D230C5 .#...lw8'Ti...0.  
0010: 50CC8DE0 010A7670 6E757365 72310506 P....vpnuser1..  
0020: 0000041C 06060000 00020706 00000001 .....  
0030: 420E3137 312E3639 2E38392E 39301AFF B.171.69.89.90..  
0040: 00000137 06F90601 000164BF 9A72CBB1 ...7.....d..r..  
0050: FE1F1FFA 7D66A600 45BD9769 DD24BAAF ...}f..E..i.\$..  
0060: D68FCDF2 BA9F9B2C FABE2BCC 0D66CF62 .....+..f.b  
0070: 51F6E280 F37502AD 53E5D6FB 7648C8D7 Q....u..S...vH..  
0080: 68CCC00F D1B186C8 7217E6DB 7E455DB4 h.....r...~E].  
0090: EAB2FE0C 2F09C25A 359F4DCA FE15B816 ..../.Z5.M.....  
00A0: 5B113D39 1101444C B8E85BE4 7BDD367F [.=9..DL..[.{.6.  
00B0: 145D5786 38A3A8DC 8D07A029 911DC3D8 .]W.8.....)....

188 08/06/2002 16:45:50.480 SEV=10 AUTHHDECODE/1 RPT=3  
Radius: Code = 1 (0x01)

189 08/06/2002 16:45:50.480 SEV=10 AUTHHDECODE/2 RPT=3  
Radius: Identifier = 35 (0x23)

190 08/06/2002 16:45:50.480 SEV=10 AUTHHDECODE/3 RPT=3  
Radius: Length = 726 (0x02D6)

191 08/06/2002 16:45:50.480 SEV=10 AUTHHDECODE/4 RPT=3  
Radius: Vector:



192 08/06/2002 16:45:50.480 SEV=10 AUTHDECODE/0 RPT=15  
0000: E8317738 275469B7 A7D230C5 50CC8DE0 .1w8'Ti...0.P...

193 08/06/2002 16:45:50.480 SEV=10 AUTHDECODE/5 RPT=14  
Radius: Type = 1 (0x01) User-Name

194 08/06/2002 16:45:50.480 SEV=10 AUTHDECODE/6 RPT=14  
Radius: Length = 10 (0x0A)

195 08/06/2002 16:45:50.480 SEV=10 AUTHDECODE/7 RPT=6  
Radius: Value (String) =

196 08/06/2002 16:45:50.480 SEV=10 AUTHDECODE/0 RPT=16  
0000: 76706E75 73657231 vpnuser1

197 08/06/2002 16:45:50.480 SEV=10 AUTHDECODE/5 RPT=15  
Radius: Type = 5 (0x05) NAS-Port

198 08/06/2002 16:45:50.480 SEV=10 AUTHDECODE/6 RPT=15  
Radius: Length = 6 (0x06)

199 08/06/2002 16:45:50.480 SEV=10 AUTHDECODE/11 RPT=5  
Radius: Value (Hex) = 0x41C

200 08/06/2002 16:45:50.480 SEV=10 AUTHDECODE/5 RPT=16  
Radius: Type = 6 (0x06) Service-Type

201 08/06/2002 16:45:50.480 SEV=10 AUTHDECODE/6 RPT=16  
Radius: Length = 6 (0x06)

202 08/06/2002 16:45:50.480 SEV=10 AUTHDECODE/11 RPT=6  
Radius: Value (Hex) = 0x2

203 08/06/2002 16:45:50.480 SEV=10 AUTHDECODE/5 RPT=17  
Radius: Type = 7 (0x07) Framed-Protocol

204 08/06/2002 16:45:50.480 SEV=10 AUTHDECODE/6 RPT=17  
Radius: Length = 6 (0x06)

205 08/06/2002 16:45:50.480 SEV=10 AUTHDECODE/11 RPT=7  
Radius: Value (Hex) = 0x1

206 08/06/2002 16:45:50.480 SEV=10 AUTHDECODE/5 RPT=18  
Radius: Type = 66 (0x42) Tunnel-Client-Endpoint

207 08/06/2002 16:45:50.480 SEV=10 AUTHDECODE/6 RPT=18  
Radius: Length = 14 (0x0E)

208 08/06/2002 16:45:50.480 SEV=10 AUTHDECODE/7 RPT=7  
Radius: Value (String) =

209 08/06/2002 16:45:50.480 SEV=10 AUTHDECODE/0 RPT=17  
0000: 3137312E 36392E38 392E3930 171.69.89.90

**210 08/06/2002 16:45:50.480 SEV=10 AUTHDECODE/5 RPT=19  
Radius: Type = 26 (0x1A) Vendor-Specific**

**211 08/06/2002 16:45:50.480 SEV=10 AUTHDECODE/6 RPT=19  
Radius: Length = 255 (0xFF)**

**212 08/06/2002 16:45:50.480 SEV=10 AUTHDECODE/10 RPT=4  
Radius: Vendor ID = 311 (0x00000137)**

**213 08/06/2002 16:45:50.480 SEV=10 AUTHDECODE/5 RPT=20**

**Radius: Type = 6 (0x06) MS-CHAP-NT-Enc-PW**

214 08/06/2002 16:45:50.480 SEV=10 AUTHDECODE/6 RPT=20  
Radius: Length = 249 (0xF9)

215 08/06/2002 16:45:50.480 SEV=10 AUTHDECODE/7 RPT=8  
Radius: Value (String) =

216 08/06/2002 16:45:50.480 SEV=10 AUTHDECODE/0 RPT=18  
0000: 06010001 64BF9A72 CBB1FE1F 1FFA7D66 ....d..r.....}f  
0010: A60045BD 9769DD24 BAAFD68F CDF2BA9F ..E..i.\$.....  
0020: 9B2CFABE 2BCC0D66 CF6251F6 E280F375 ,...+..f.bQ....u  
0030: 02AD53E5 D6FB7648 C8D768CC C00FD1B1 ..S...vH..h....  
0040: 86C87217 E6DB7E45 5DB4EAB2 FE0C2F09 ..r...~E]...../  
0050: C25A359F 4DCAFE15 B8165B11 3D391101 .Z5.M.....[.=9..  
0060: 444CB8E8 5BE47BDD 367F145D 578638A3 DL..[.{.6..]W.8.  
0070: A8DC8D07 A029911D C3D839D6 12880394 .....).9.....  
0080: BFCB86DA F5DE706B 616FA285 6B0F2312 .....pkao..k.#.  
0090: 5BA566D2 153D9A88 D970EAA7 EEAE2453 [.f...=...p...\$\$  
00A0: DC28ECC7 C0B4F4C4 8BF04712 D68F3FCA .(.....G...?..  
00B0: 89F11100 3FA76070 2EE793E9 4EE10B7C ....?.`p...N..|

**228 08/06/2002 16:45:50.480 SEV=10 AUTHDECODE/5 RPT=21**  
**Radius: Type = 26 (0x1A) Vendor-Specific**

**229 08/06/2002 16:45:50.480 SEV=10 AUTHDECODE/6 RPT=21**  
**Radius: Length = 255 (0xFF)**

**230 08/06/2002 16:45:50.480 SEV=10 AUTHDECODE/10 RPT=5**  
**Radius: Vendor ID = 311 (0x00000137)**

**231 08/06/2002 16:45:50.480 SEV=10 AUTHDECODE/5 RPT=22**  
**Radius: Type = 6 (0x06) MS-CHAP-NT-Enc-PW**

232 08/06/2002 16:45:50.480 SEV=10 AUTHDECODE/6 RPT=22  
Radius: Length = 249 (0xF9)

233 08/06/2002 16:45:50.480 SEV=10 AUTHDECODE/7 RPT=9  
Radius: Value (String) =

234 08/06/2002 16:45:50.480 SEV=10 AUTHDECODE/0 RPT=19  
0000: 06010002 424D1964 E0FCDA8 DE020FCF ....BM.d.....  
0010: 141848C6 3080EE8C 098DCB0E C5FD7AD0 ..H.0.....z.  
0020: 771E909B 78C84AA0 89CEAA5E D2727D24 w...x.J....^r}\$  
0030: 67D195F9 85F8602E AABB5548 D0F29B5E g.....`...UH...^  
0040: E16380AF 941D7DC0 BD842962 5673BDBD .c....}....)bVs..  
0050: E8818EBE 271C7B4F 9E52A02F 8A6AAA8E ....'.{O.R./..j..  
0060: D3E142B7 C60FDCE9 AECC4F81 7B926351 ..B.....O.{.cQ  
0070: 375530C5 F8BFD23C 5E737129 4164C119 7U0....<^sq)Ad..  
0080: 4BF7C116 4EB4F82C 5FC2639E 2EAB8DD9 K...N...,\_c.....  
0090: 8DD129AC 84B21D0F 96E11B94 BBB78214 ..).....  
00A0: B2CED1D2 1758E20C 8462F884 26C3292E ....X...b.&..).  
00B0: D4BAC7F6 7812C981 B5309BE5 509877E5 ....x....0..P.w.

**246 08/06/2002 16:45:50.480 SEV=10 AUTHDECODE/5 RPT=23**  
**Radius: Type = 26 (0x1A) Vendor-Specific**

**247 08/06/2002 16:45:50.480 SEV=10 AUTHDECODE/6 RPT=23**  
**Radius: Length = 42 (0x2A)**

**248 08/06/2002 16:45:50.480 SEV=10 AUTHDECODE/10 RPT=6**  
**Radius: Vendor ID = 311 (0x00000137)**

**249 08/06/2002 16:45:50.480 SEV=10 AUTHDECODE/5 RPT=24**

**Radius: Type = 6 (0x06) MS-CHAP-NT-Enc-PW**

250 08/06/2002 16:45:50.480 SEV=10 AUTHDECODE/6 RPT=24  
Radius: Length = 36 (0x24)

251 08/06/2002 16:45:50.480 SEV=10 AUTHDECODE/7 RPT=10  
Radius: Value (String) =

252 08/06/2002 16:45:50.480 SEV=10 AUTHDECODE/0 RPT=20  
0000: 06010003 47FD5D0E 1840AC0A F345102C ....G.]..@...E.,  
0010: ED6971DC 1F5CB1D7 609C5101 4724A804 .iq..\..\`Q.G\$.  
0020: 9B9C ..

255 08/06/2002 16:45:50.480 SEV=10 AUTHDECODE/5 RPT=25  
Radius: Type = 26 (0x1A) Vendor-Specific

256 08/06/2002 16:45:50.480 SEV=10 AUTHDECODE/6 RPT=25  
Radius: Length = 24 (0x18)

257 08/06/2002 16:45:50.480 SEV=10 AUTHDECODE/10 RPT=7  
Radius: Vendor ID = 311 (0x00000137)

258 08/06/2002 16:45:50.480 SEV=10 AUTHDECODE/5 RPT=26  
Radius: Type = 11 (0x0B) MS-CHAP-Challenge

259 08/06/2002 16:45:50.480 SEV=10 AUTHDECODE/6 RPT=26  
Radius: Length = 18 (0x12)

260 08/06/2002 16:45:50.480 SEV=10 AUTHDECODE/7 RPT=11  
Radius: Value (String) =

261 08/06/2002 16:45:50.480 SEV=10 AUTHDECODE/0 RPT=21  
0000: A7129F8C 8F87FA68 3D3D0A73 E70E3AB0 .....h==.s...:

**262 08/06/2002 16:45:50.480 SEV=10 AUTHDECODE/5 RPT=27  
Radius: Type = 26 (0x1A) Vendor-Specific**

**263 08/06/2002 16:45:50.480 SEV=10 AUTHDECODE/6 RPT=27  
Radius: Length = 76 (0x4C)**

**264 08/06/2002 16:45:50.480 SEV=10 AUTHDECODE/10 RPT=8  
Radius: Vendor ID = 311 (0x00000137)**

**265 08/06/2002 16:45:50.480 SEV=10 AUTHDECODE/5 RPT=28  
Radius: Type = 27 (0x1B) MS-CHAP2-CPW**

266 08/06/2002 16:45:50.480 SEV=10 AUTHDECODE/6 RPT=28  
Radius: Length = 70 (0x46)

267 08/06/2002 16:45:50.480 SEV=10 AUTHDECODE/7 RPT=12  
Radius: Value (String) =

268 08/06/2002 16:45:50.480 SEV=10 AUTHDECODE/0 RPT=22  
0000: 07014E5D FC26F8E9 2F90A59B C04963DA ..N].&./....Ic.  
0010: 048662B6 A996DD49 62AE05FA 5AAFFDDA ..b....Ib...Z...  
0020: 96A90000 00000000 0000EF4A 06BB0405 .....J....  
0030: A003F44A F8B81E05 B22506A4 6259979C ...J.....%.by..  
0040: 5F510000 \_Q..

273 08/06/2002 16:45:50.480 SEV=10 AUTHDECODE/5 RPT=29  
Radius: Type = 4 (0x04) NAS-IP-Address

274 08/06/2002 16:45:50.480 SEV=10 AUTHDECODE/6 RPT=29  
Radius: Length = 6 (0x06)

275 08/06/2002 16:45:50.490 SEV=10 AUTHDECODE/9 RPT=2  
Radius: Value (IP Address) = 172.16.172.36 (0xAC10AC24)

276 08/06/2002 16:45:50.490 SEV=10 AUTHDECODE/5 RPT=30  
Radius: Type = 61 (0x3D) NAS-Port-Type

277 08/06/2002 16:45:50.490 SEV=10 AUTHDECODE/6 RPT=30  
Radius: Length = 6 (0x06)

278 08/06/2002 16:45:50.490 SEV=10 AUTHDECODE/11 RPT=8  
Radius: Value (Hex) = 0x5

279 08/06/2002 16:45:50.490 SEV=8 AUTHDBG/28 RPT=65  
Radius\_Xmt(9aa46fc)

280 08/06/2002 16:45:50.490 SEV=9 AUTHDBG/71 RPT=304  
xmit\_cnt = 1

281 08/06/2002 16:45:50.680 SEV=8 AUTHDBG/30 RPT=65  
Radius\_Match(9aa46fc, 71e7df4), id = 0x23, rcvd = 0x23

**282 08/06/2002 16:45:50.680 SEV=8 AUTHDBG/63 RPT=304  
AUTH\_RcvReply(9aa46fc, 0, 0)**

283 08/06/2002 16:45:50.680 SEV=8 AUTHDBG/31 RPT=130  
Radius\_Decompile(71e7df4, 213)

284 08/06/2002 16:45:50.680 SEV=13 AUTHDECODE/0 RPT=23  
0000: 022300D5 EF3B5E72 2E31AF7C 7D305207 .#...;^r.1.|}0R.  
0010: 27ADA143 07060000 00010606 00000002 '...C.....  
0020: 19204920 05160000 01370001 AB45593C . I .....7...EY<  
0030: 01C2037B 9CB17432 00000000 00000023 ...{..t2.....#  
0040: 1A2A0000 01371124 80293506 D58538BE .\*...7.\$.)5...8.  
0050: 93D9BB03 17133616 C55D4C6F CE5D8848 .....6..]Lo.].H  
0060: 82BAB54B DF490416 84271A2A 00000137 ...K.I...'\*.7  
0070: 1024802A F7F3D930 56008345 580C49D5 .\$.\*...0V..EX.I.  
0080: 414E8B6F 4FABD2EB 65A99BB3 2032E3DB AN.oO...e... 2..  
0090: 792C0750 1A330000 01371A2D 01533D33 y,.P.3...7.-.S=3  
00A0: 37333630 41343233 44384145 42423132 7360A423D8AEBB12  
00B0: 33324239 36413545 36433741 45443938 32B96A5E6C7AED98

296 08/06/2002 16:45:50.680 SEV=10 AUTHDECODE/1 RPT=4  
Radius: Code = 2 (0x02)

297 08/06/2002 16:45:50.680 SEV=10 AUTHDECODE/2 RPT=4  
Radius: Identifier = 35 (0x23)

298 08/06/2002 16:45:50.680 SEV=10 AUTHDECODE/3 RPT=4  
Radius: Length = 213 (0x00D5)

299 08/06/2002 16:45:50.680 SEV=10 AUTHDECODE/4 RPT=4  
Radius: Vector:

300 08/06/2002 16:45:50.680 SEV=10 AUTHDECODE/0 RPT=24  
0000: EF3B5E72 2E31AF7C 7D305207 27ADA143 .;^r.1.|}0R.'...C

301 08/06/2002 16:45:50.680 SEV=10 AUTHDECODE/5 RPT=31  
Radius: Type = 7 (0x07) Framed-Protocol

302 08/06/2002 16:45:50.680 SEV=10 AUTHDECODE/6 RPT=31  
Radius: Length = 6 (0x06)

303 08/06/2002 16:45:50.680 SEV=10 AUTHDECODE/11 RPT=9

Radius: Value (Hex) = 0x1

304 08/06/2002 16:45:50.680 SEV=10 AUTHDECODE/5 RPT=32  
Radius: Type = 6 (0x06) Service-Type

305 08/06/2002 16:45:50.680 SEV=10 AUTHDECODE/6 RPT=32  
Radius: Length = 6 (0x06)

306 08/06/2002 16:45:50.680 SEV=10 AUTHDECODE/11 RPT=10  
Radius: Value (Hex) = 0x2

307 08/06/2002 16:45:50.680 SEV=10 AUTHDECODE/5 RPT=33  
Radius: Type = 25 (0x19) Class

308 08/06/2002 16:45:50.680 SEV=10 AUTHDECODE/6 RPT=33  
Radius: Length = 32 (0x20)

309 08/06/2002 16:45:50.680 SEV=10 AUTHDECODE/7 RPT=13  
Radius: Value (String) =

310 08/06/2002 16:45:50.680 SEV=10 AUTHDECODE/0 RPT=25  
0000: 49200516 00000137 0001AB45 593C01C2 I .....7...EY<..  
0010: 037B9CB1 74320000 00000000 0023 .{..t2.....#

312 08/06/2002 16:45:50.680 SEV=10 AUTHDECODE/5 RPT=34  
Radius: Type = 26 (0x1A) Vendor-Specific

313 08/06/2002 16:45:50.680 SEV=10 AUTHDECODE/6 RPT=34  
Radius: Length = 42 (0x2A)

314 08/06/2002 16:45:50.680 SEV=10 AUTHDECODE/10 RPT=9  
Radius: Vendor ID = 311 (0x00000137)

315 08/06/2002 16:45:50.680 SEV=10 AUTHDECODE/5 RPT=35  
Radius: Type = 17 (0x11) MS-MPPE-Recv-Key

316 08/06/2002 16:45:50.680 SEV=10 AUTHDECODE/6 RPT=35  
Radius: Length = 36 (0x24)

317 08/06/2002 16:45:50.680 SEV=10 AUTHDECODE/7 RPT=14  
Radius: Value (String) =

318 08/06/2002 16:45:50.680 SEV=10 AUTHDECODE/0 RPT=26  
0000: 80293506 D58538BE 93D9BB03 17133616 .)5...8.....6.  
0010: C55D4C6F CE5D8848 82BAB54B DF490416 .]Lo.]H...K.I..  
0020: 8427 .'

321 08/06/2002 16:45:50.680 SEV=10 AUTHDECODE/5 RPT=36  
Radius: Type = 26 (0x1A) Vendor-Specific

322 08/06/2002 16:45:50.680 SEV=10 AUTHDECODE/6 RPT=36  
Radius: Length = 42 (0x2A)

323 08/06/2002 16:45:50.680 SEV=10 AUTHDECODE/10 RPT=10  
Radius: Vendor ID = 311 (0x00000137)

324 08/06/2002 16:45:50.680 SEV=10 AUTHDECODE/5 RPT=37  
Radius: Type = 16 (0x10) MS-MPPE-Send-Key

325 08/06/2002 16:45:50.680 SEV=10 AUTHDECODE/6 RPT=37  
Radius: Length = 36 (0x24)

326 08/06/2002 16:45:50.680 SEV=10 AUTHDECODE/7 RPT=15  
Radius: Value (String) =

327 08/06/2002 16:45:50.680 SEV=10 AUTHDECODE/0 RPT=27  
0000: 802AF7F3 D9305600 8345580C 49D5414E .\*...0V..EX.I.AN  
0010: 8B6F4FAB D2EB65A9 9BB32032 E3DB792C .oO...e... 2..y,  
0020: 0750 .P

330 08/06/2002 16:45:50.680 SEV=10 AUTHDECODE/5 RPT=38  
Radius: Type = 26 (0x1A) Vendor-Specific

331 08/06/2002 16:45:50.680 SEV=10 AUTHDECODE/6 RPT=38  
Radius: Length = 51 (0x33)

**332 08/06/2002 16:45:50.680 SEV=10 AUTHDECODE/10 RPT=11**  
**Radius: Vendor ID = 311 (0x00000137)**

**333 08/06/2002 16:45:50.680 SEV=10 AUTHDECODE/5 RPT=39**  
**Radius: Type = 26 (0x1A) MS-CHAP2-Success**

334 08/06/2002 16:45:50.680 SEV=10 AUTHDECODE/6 RPT=39  
Radius: Length = 45 (0x2D)

335 08/06/2002 16:45:50.680 SEV=10 AUTHDECODE/7 RPT=16  
Radius: Value (String) =

336 08/06/2002 16:45:50.680 SEV=10 AUTHDECODE/0 RPT=28  
0000: 01533D33 37333630 41343233 44384145 .S=37360A423D8AE  
0010: 42423132 33324239 36413545 36433741 BB1232B96A5E6C7A  
0020: 45443938 45313841 453032 ED98E18AE02

339 08/06/2002 16:45:50.680 SEV=10 AUTHDECODE/5 RPT=40  
Radius: Type = 26 (0x1A) Vendor-Specific

340 08/06/2002 16:45:50.680 SEV=10 AUTHDECODE/6 RPT=40  
Radius: Length = 14 (0x0E)

341 08/06/2002 16:45:50.680 SEV=10 AUTHDECODE/10 RPT=12  
Radius: Vendor ID = 311 (0x00000137)

342 08/06/2002 16:45:50.680 SEV=10 AUTHDECODE/5 RPT=41  
Radius: Type = 10 (0x0A) Unknown

343 08/06/2002 16:45:50.680 SEV=10 AUTHDECODE/6 RPT=41  
Radius: Length = 8 (0x08)

344 08/06/2002 16:45:50.680 SEV=8 AUTHDBG/29 RPT=65  
Radius\_Rcv(9aa46fc)

345 08/06/2002 16:45:50.680 SEV=9 AUTHDBG/32 RPT=8  
Radius: Discarding unknown Vendor Specific Attribute: vid = 311, type = 10

346 08/06/2002 16:45:50.680 SEV=8 AUTHDBG/66 RPT=304  
AUTH\_DeleteTimer(9aa46fc, 0, 0)

347 08/06/2002 16:45:50.680 SEV=9 AUTHDBG/74 RPT=304  
Reply timer stopped: handle = 5A100016, timestamp = 355274964

348 08/06/2002 16:45:50.680 SEV=8 AUTHDBG/58 RPT=304  
AUTH\_Callback(9aa46fc, 0, 0)

**349 08/06/2002 16:45:50.680 SEV=6 AUTH/4 RPT=18 171.69.89.90**  
**Authentication successful: handle = 103, server = 171.69.89.60,**  
**user = vpnuser1**

350 08/06/2002 16:45:50.680 SEV=8 AUTHDBG/3 RPT=305

AUTH\_PutAttrTable(103, 19bfc54)

351 08/06/2002 16:45:50.680 SEV=8 AUTHDBG/60 RPT=304  
AUTH\_UnbindServer(9aa46fc, 0, 0)

352 08/06/2002 16:45:50.680 SEV=9 AUTHDBG/70 RPT=304  
Auth Server 18cela4 has been unbound from ACB 9aa46fc, sessions = 0

353 08/06/2002 16:45:50.680 SEV=8 AUTHDBG/59 RPT=305  
AUTH\_BindServer(9aa46fc, 0, 0)

354 08/06/2002 16:45:50.680 SEV=9 AUTHDBG/69 RPT=305  
Auth Server 18cdfa4 has been bound to ACB 9aa46fc, sessions = 1

355 08/06/2002 16:45:50.680 SEV=8 AUTHDBG/65 RPT=305  
AUTH\_CreateTimer(9aa46fc, 0, 0)

356 08/06/2002 16:45:50.680 SEV=9 AUTHDBG/72 RPT=305  
Reply timer created: handle = 5A110016

357 08/06/2002 16:45:50.680 SEV=8 AUTHDBG/61 RPT=305>  
AUTH\_BuildMsg(9aa46fc, 0, 0)>

358 08/06/2002 16:45:50.680 SEV=8 AUTHDBG/64 RPT=305  
AUTH\_StartTimer(9aa46fc, 0, 0)

359 08/06/2002 16:45:50.680 SEV=9 AUTHDBG/73 RPT=305  
Reply timer started: handle = 5A110016, timestamp = 355274964, timeout = 30000

360 08/06/2002 16:45:50.680 SEV=8 AUTHDBG/62 RPT=305  
AUTH\_SndRequest(9aa46fc, 0, 0)>

361 08/06/2002 16:45:50.680 SEV=8 AUTHDBG/50 RPT=479  
IntDB\_Decode(2ea1004, 57)

362 08/06/2002 16:45:50.680 SEV=10 AUTHHDECODE/12 RPT=11  
IntDB: Type = 1 (0x01) User-Name

363 08/06/2002 16:45:50.680 SEV=10 AUTHHDECODE/13 RPT=11  
IntDB: Length = 11 (0x0B)

364 08/06/2002 16:45:50.680 SEV=10 AUTHHDECODE/14 RPT=5  
IntDB: Value (String) =

365 08/06/2002 16:45:50.680 SEV=10 AUTHHDECODE/0 RPT=29  
0000: 77696E64 6F777375 736572 windowsuser

366 08/06/2002 16:45:50.680 SEV=8 AUTHDBG/47 RPT=479  
IntDB\_Xmt(9aa46fc)

367 08/06/2002 16:45:50.680 SEV=9 AUTHDBG/71 RPT=305  
xmit\_cnt = 1

368 08/06/2002 16:45:50.680 SEV=8 AUTHDBG/47 RPT=480  
IntDB\_Xmt(9aa46fc)

369 08/06/2002 16:45:50.780 SEV=8 AUTHDBG/49 RPT=240  
IntDB\_Match(9aa46fc, 62f1c4c)

370 08/06/2002 16:45:50.780 SEV=8 AUTHDBG/63 RPT=305  
AUTH\_RcvReply(9aa46fc, 0, 0)

371 08/06/2002 16:45:50.780 SEV=8 AUTHDBG/50 RPT=480  
IntDB\_Decode(62f1c4c, 170)

372 08/06/2002 16:45:50.780 SEV=10 AUTHDECODE/12 RPT=12  
IntDB: Type = 1 (0x01) User-Name

373 08/06/2002 16:45:50.780 SEV=10 AUTHDECODE/13 RPT=12  
IntDB: Length = 11 (0x0B)

374 08/06/2002 16:45:50.780 SEV=10 AUTHDECODE/14 RPT=6  
IntDB: Value (String) =

375 08/06/2002 16:45:50.780 SEV=10 AUTHDECODE/0 RPT=30  
0000: 77696E64 6F777375 736572 windowsuser

376 08/06/2002 16:45:50.780 SEV=10 AUTHDECODE/12 RPT=13  
IntDB: Type = 4109 (0x100D) IPSec-Authentication

377 08/06/2002 16:45:50.780 SEV=10 AUTHDECODE/13 RPT=13  
IntDB: Length = 4 (0x04)

378 08/06/2002 16:45:50.780 SEV=10 AUTHDECODE/15 RPT=7  
IntDB: Value (Integer) = 6 (0x0006)

379 08/06/2002 16:45:50.780 SEV=10 AUTHDECODE/12 RPT=14  
IntDB: Type = 4123 (0x101B) Split-Tunnel-Inclusion-List

380 08/06/2002 16:45:50.780 SEV=10 AUTHDECODE/13 RPT=14  
IntDB: Length = 4 (0x04)

381 08/06/2002 16:45:50.780 SEV=10 AUTHDECODE/14 RPT=7  
IntDB: Value (String) =

382 08/06/2002 16:45:50.780 SEV=10 AUTHDECODE/0 RPT=31  
0000: 74657374 test

383 08/06/2002 16:45:50.780 SEV=10 AUTHDECODE/12 RPT=15  
IntDB: Type = 4151 (0x1037) Split-Tunneling-Policy

384 08/06/2002 16:45:50.780 SEV=10 AUTHDECODE/13 RPT=15  
IntDB: Length = 4 (0x04)

385 08/06/2002 16:45:50.780 SEV=10 AUTHDECODE/15 RPT=8  
IntDB: Value (Integer) = 1 (0x0001)

386 08/06/2002 16:45:50.780 SEV=8 AUTHDBG/48 RPT=240  
IntDB\_Rcv(9aa46fc)

387 08/06/2002 16:45:50.780 SEV=8 AUTHDBG/66 RPT=305  
AUTH\_DeleteTimer(9aa46fc, 0, 0)

388 08/06/2002 16:45:50.780 SEV=9 AUTHDBG/74 RPT=305  
Reply timer stopped: handle = 5A110016, timestamp = 355274974

389 08/06/2002 16:45:50.780 SEV=8 AUTHDBG/58 RPT=305  
AUTH\_Callback(9aa46fc, 0, 0)

390 08/06/2002 16:45:50.780 SEV=6 AUTH/41 RPT=219 171.69.89.90  
Authentication successful: handle = 103, server = Internal,  
group = windowsuser

391 08/06/2002 16:45:50.780 SEV=8 AUTHDBG/3 RPT=306  
AUTH\_PutAttrTable(103, 19bfc54)

392 08/06/2002 16:45:50.780 SEV=8 AUTHDBG/60 RPT=305  
AUTH\_UnbindServer(9aa46fc, 0, 0)



393 08/06/2002 16:45:50.780 SEV=9 AUTHDBG/70 RPT=305  
Auth Server 18cdfa4 has been unbound from ACB 9aa46fc, sessions = 0

394 08/06/2002 16:45:50.780 SEV=8 AUTHDBG/59 RPT=306  
AUTH\_BindServer(9aa46fc, 0, 0)

395 08/06/2002 16:45:50.780 SEV=9 AUTHDBG/69 RPT=306  
Auth Server 18cdfa4 has been bound to ACB 9aa46fc, sessions = 1

396 08/06/2002 16:45:50.780 SEV=8 AUTHDBG/65 RPT=306  
AUTH\_CreateTimer(9aa46fc, 0, 0)

397 08/06/2002 16:45:50.780 SEV=9 AUTHDBG/72 RPT=306  
Reply timer created: handle = 5A120016

398 08/06/2002 16:45:50.780 SEV=8 AUTHDBG/61 RPT=306  
AUTH\_BuildMsg(9aa46fc, 0, 0)

399 08/06/2002 16:45:50.780 SEV=8 AUTHDBG/64 RPT=306  
AUTH\_StartTimer(9aa46fc, 0, 0)

400 08/06/2002 16:45:50.780 SEV=9 AUTHDBG/73 RPT=306  
Reply timer started: handle = 5A120016, timestamp = 355274974, timeout = 30000

401 08/06/2002 16:45:50.780 SEV=8 AUTHDBG/62 RPT=306  
AUTH\_SndRequest(9aa46fc, 0, 0)

402 08/06/2002 16:45:50.780 SEV=8 AUTHDBG/50 RPT=481  
IntDB\_Decode(2e8aa34, 57)

403 08/06/2002 16:45:50.780 SEV=10 AUTHHDECODE/12 RPT=16  
IntDB: Type = 1 (0x01) User-Name

404 08/06/2002 16:45:50.780 SEV=10 AUTHHDECODE/13 RPT=16  
IntDB: Length = 11 (0x0B)

405 08/06/2002 16:45:50.780 SEV=10 AUTHHDECODE/14 RPT=8  
IntDB: Value (String) =

406 08/06/2002 16:45:50.780 SEV=10 AUTHHDECODE/0 RPT=32  
0000: 77696E64 6F777375 736572 windowsuser

407 08/06/2002 16:45:50.780 SEV=8 AUTHDBG/47 RPT=481  
IntDB\_Xmt(9aa46fc)

408 08/06/2002 16:45:50.780 SEV=9 AUTHDBG/71 RPT=306  
xmit\_cnt = 1

409 08/06/2002 16:45:50.780 SEV=8 AUTHDBG/47 RPT=482  
IntDB\_Xmt(9aa46fc)

410 08/06/2002 16:45:50.880 SEV=8 AUTHDBG/49 RPT=241  
IntDB\_Match(9aa46fc, 62fd1a8)

411 08/06/2002 16:45:50.880 SEV=8 AUTHDBG/63 RPT=306  
AUTH\_RcvReply(9aa46fc, 0, 0)

412 08/06/2002 16:45:50.880 SEV=8 AUTHDBG/50 RPT=482  
IntDB\_Decode(62fd1a8, 170)

413 08/06/2002 16:45:50.880 SEV=10 AUTHHDECODE/12 RPT=17  
IntDB: Type = 1 (0x01) User-Name

414 08/06/2002 16:45:50.880 SEV=10 AUTHDECODE/13 RPT=17  
IntDB: Length = 11 (0x0B)

415 08/06/2002 16:45:50.880 SEV=10 AUTHDECODE/14 RPT=9  
IntDB: Value (String) =

416 08/06/2002 16:45:50.880 SEV=10 AUTHDECODE/0 RPT=33  
0000: 77696E64 6F777375 736572 windowsuser

417 08/06/2002 16:45:50.880 SEV=10 AUTHDECODE/12 RPT=18  
IntDB: Type = 4109 (0x100D) IPSec-Authentication

418 08/06/2002 16:45:50.880 SEV=10 AUTHDECODE/13 RPT=18  
IntDB: Length = 4 (0x04)

419 08/06/2002 16:45:50.880 SEV=10 AUTHDECODE/15 RPT=9  
IntDB: Value (Integer) = 6 (0x0006)

420 08/06/2002 16:45:50.880 SEV=10 AUTHDECODE/12 RPT=19  
IntDB: Type = 4123 (0x101B) Split-Tunnel-Inclusion-List

421 08/06/2002 16:45:50.880 SEV=10 AUTHDECODE/13 RPT=19  
IntDB: Length = 4 (0x04)

422 08/06/2002 16:45:50.880 SEV=10 AUTHDECODE/14 RPT=10  
IntDB: Value (String) =

423 08/06/2002 16:45:50.880 SEV=10 AUTHDECODE/0 RPT=34  
0000: 74657374 test

424 08/06/2002 16:45:50.880 SEV=10 AUTHDECODE/12 RPT=20  
IntDB: Type = 4151 (0x1037) Split-Tunneling-Policy

425 08/06/2002 16:45:50.880 SEV=10 AUTHDECODE/13 RPT=20  
IntDB: Length = 4 (0x04)

426 08/06/2002 16:45:50.880 SEV=10 AUTHDECODE/15 RPT=10  
IntDB: Value (Integer) = 1 (0x0001)

427 08/06/2002 16:45:50.880 SEV=8 AUTHDBG/48 RPT=241  
IntDB\_Rcv(9aa46fc)

428 08/06/2002 16:45:50.880 SEV=8 AUTHDBG/66 RPT=306  
AUTH\_DeleteTimer(9aa46fc, 0, 0)

429 08/06/2002 16:45:50.880 SEV=9 AUTHDBG/74 RPT=306  
Reply timer stopped: handle = 5A120016, timestamp = 355274984

430 08/06/2002 16:45:50.880 SEV=8 AUTHDBG/58 RPT=306  
AUTH\_Callback(9aa46fc, 0, 0)

431 08/06/2002 16:45:50.880 SEV=6 AUTH/41 RPT=220 171.69.89.90  
Authentication successful: handle = 103, server = Internal,  
group = windowsuser

432 08/06/2002 16:45:50.880 SEV=8 AUTHDBG/4 RPT=291  
AUTH\_GetAttrTable(103, 743aa8)

433 08/06/2002 16:45:50.880 SEV=8 AUTHDBG/4 RPT=292  
AUTH\_GetAttrTable(103, 743ad8)

434 08/06/2002 16:45:50.880 SEV=8 AUTHDBG/4 RPT=293  
AUTH\_GetAttrTable(103, 742a30)

435 08/06/2002 16:45:50.880 SEV=8 AUTHDBG/2 RPT=264  
AUTH\_Close(103)

436 08/06/2002 16:45:50.880 SEV=4 IKE/52 RPT=19 171.69.89.90  
Group [windowsuser] User [vpnuser1]  
User (vpnuser1) authenticated.

437 08/06/2002 16:45:50.880 SEV=8 AUTHDBG/60 RPT=306  
AUTH\_UnbindServer(9aa46fc, 0, 0)

438 08/06/2002 16:45:50.880 SEV=9 AUTHDBG/70 RPT=306  
Auth Server 18cdfa4 has been unbound from ACB 9aa46fc, sessions = 0

439 08/06/2002 16:45:50.880 SEV=8 AUTHDBG/10 RPT=264  
AUTH\_Int\_FreeAuthCB(9aa46fc)

440 08/06/2002 16:45:50.880 SEV=7 AUTH/13 RPT=265  
Authentication session closed: handle = 103

441 08/06/2002 16:45:50.900 SEV=6 IKE/130 RPT=30 171.69.89.90  
Group [windowsuser] User [vpnuser1]  
Received unsupported transaction mode attribute: 5

443 08/06/2002 16:45:50.930 SEV=4 AUTH/22 RPT=286  
User vpnuser1 connected

444 08/06/2002 16:45:50.930 SEV=4 IKE/119 RPT=23 171.69.89.90  
Group [windowsuser] User [vpnuser1]  
PHASE 1 COMPLETED

445 08/06/2002 16:45:50.930 SEV=6 IKE/121 RPT=23 171.69.89.90  
Keep-alive type for this connection: DPD

446 08/06/2002 16:45:50.930 SEV=5 IKE/25 RPT=27 171.69.89.90  
Group [windowsuser] User [vpnuser1]  
Received remote Proxy Host data in ID Payload:  
Address 10.10.10.1, Protocol 0, Port 0

449 08/06/2002 16:45:50.930 SEV=5 IKE/24 RPT=23 171.69.89.90  
Group [windowsuser] User [vpnuser1]  
Received local Proxy Host data in ID Payload:  
Address 172.16.172.36, Protocol 0, Port 0

452 08/06/2002 16:45:50.930 SEV=5 IKE/66 RPT=27 171.69.89.90  
Group [windowsuser] User [vpnuser1]  
IKE Remote Peer configured for SA: ESP-3DES-MD5

454 08/06/2002 16:45:50.930 SEV=5 IKE/75 RPT=27 171.69.89.90  
Group [windowsuser] User [vpnuser1]  
Overriding Initiator's IPSec rekeying duration from 2147483 to 28800 seconds

456 08/06/2002 16:45:50.940 SEV=4 IKE/49 RPT=27 171.69.89.90  
Group [windowsuser] User [vpnuser1]  
Security negotiation complete for User (vpnuser1)  
Responder, Inbound SPI = 0x36291f3d, Outbound SPI = 0x07345e3e

459 08/06/2002 16:45:50.940 SEV=8 AUTHDBG/1 RPT=265  
AUTH\_Open() returns 104

460 08/06/2002 16:45:50.940 SEV=7 AUTH/12 RPT=266  
Authentication session opened: handle = 104

461 08/06/2002 16:45:50.940 SEV=8 AUTHDBG/3 RPT=307  
AUTH\_PutAttrTable(104, 1b3b748)

462 08/06/2002 16:45:50.940 SEV=8 AUTHDBG/7 RPT=31  
AUTH\_Accounting(104, 0, 0)

463 08/06/2002 16:45:50.940 SEV=4 IKE/120 RPT=27 171.69.89.90  
Group [windowsuser] User [vpnuser1]  
PHASE 2 COMPLETED (msgid=ed3c1f7c)

464 08/06/2002 16:45:50.940 SEV=8 AUTHDBG/59 RPT=307  
AUTH\_BindServer(9a9blec, 0, 0)

465 08/06/2002 16:45:50.940 SEV=9 AUTHDBG/69 RPT=307  
Acct Server 1811fa4 has been bound to ACB 9a9blec, sessions = 1

466 08/06/2002 16:45:50.940 SEV=8 AUTHDBG/65 RPT=307  
AUTH\_CreateTimer(9a9blec, 0, 0)

467 08/06/2002 16:45:50.940 SEV=9 AUTHDBG/72 RPT=307  
Reply timer created: handle = 5A180017

468 08/06/2002 16:45:50.940 SEV=8 AUTHDBG/61 RPT=307  
AUTH\_BuildMsg(9a9blec, 0, 0)

469 08/06/2002 16:45:50.940 SEV=8 AUTHDBG/27 RPT=66  
Radius\_Build(9a9blec)

470 08/06/2002 16:45:50.940 SEV=8 AUTHDBG/64 RPT=307  
AUTH\_StartTimer(9a9blec, 0, 0)

471 08/06/2002 16:45:50.940 SEV=9 AUTHDBG/73 RPT=307  
Reply timer started: handle = 5A180017, timestamp = 355274990, timeout = 1000

472 08/06/2002 16:45:50.940 SEV=8 AUTHDBG/62 RPT=307  
AUTH\_SndRequest(9a9blec, 0, 0)

473 08/06/2002 16:45:50.940 SEV=8 AUTHDBG/31 RPT=131  
Radius\_Decode(62f2324, 140)

474 08/06/2002 16:45:50.940 SEV=13 AUTHDECODE/0 RPT=35  
0000: 043A008C 0A49A1AF C3022A50 B74B0B97 .:....I....\*P.K..  
0010: 887AFEC1 010A7670 6E757365 72310506 .z....vpnuser1..  
0020: 0000041C 06060000 00020706 00000001 .....  
0030: 08060A0A 0A011920 49200516 00000137 ..... I .....7  
0040: 0001AB45 593C01C2 037B9CB1 74320000 ...EY<...{..t2..  
0050: 00000000 00232806 00000001 2C0A3345 .....#(.....,3E  
0060: 35303030 3144420E 3137312E 36392E38 50001DB.171.69.8  
0070: 392E3930 2D060000 00012906 00000000 9.90-.....).....  
0080: 0406AC10 AC243D06 00000005 .....\$=.....

483 08/06/2002 16:45:50.940 SEV=10 AUTHDECODE/1 RPT=5  
Radius: Code = 4 (0x04)

484 08/06/2002 16:45:50.940 SEV=10 AUTHDECODE/2 RPT=5  
Radius: Identifier = 58 (0x3A)

485 08/06/2002 16:45:50.940 SEV=10 AUTHDECODE/3 RPT=5  
Radius: Length = 140 (0x008C)

486 08/06/2002 16:45:50.940 SEV=10 AUTHDECODE/4 RPT=5  
Radius: Vector:

487 08/06/2002 16:45:50.940 SEV=10 AUTHDECODE/0 RPT=36

0000: 0A49A1AF C3022A50 B74B0B97 887AFEC1 .I....\*P.K...z..

488 08/06/2002 16:45:50.940 SEV=10 AUTHDECODE/5 RPT=42  
Radius: Type = 1 (0x01) User-Name

489 08/06/2002 16:45:50.940 SEV=10 AUTHDECODE/6 RPT=42  
Radius: Length = 10 (0x0A)

490 08/06/2002 16:45:50.940 SEV=10 AUTHDECODE/7 RPT=17  
Radius: Value (String) =

491 08/06/2002 16:45:50.940 SEV=10 AUTHDECODE/0 RPT=37  
0000: 76706E75 73657231 vpnuser1

492 08/06/2002 16:45:50.940 SEV=10 AUTHDECODE/5 RPT=43  
Radius: Type = 5 (0x05) NAS-Port

493 08/06/2002 16:45:50.940 SEV=10 AUTHDECODE/6 RPT=43  
Radius: Length = 6 (0x06)

494 08/06/2002 16:45:50.940 SEV=10 AUTHDECODE/11 RPT=11  
Radius: Value (Hex) = 0x41C

495 08/06/2002 16:45:50.940 SEV=10 AUTHDECODE/5 RPT=44  
Radius: Type = 6 (0x06) Service-Type

496 08/06/2002 16:45:50.940 SEV=10 AUTHDECODE/6 RPT=44  
Radius: Length = 6 (0x06)

497 08/06/2002 16:45:50.940 SEV=10 AUTHDECODE/11 RPT=12  
Radius: Value (Hex) = 0x2

498 08/06/2002 16:45:50.940 SEV=10 AUTHDECODE/5 RPT=45  
Radius: Type = 7 (0x07) Framed-Protocol

499 08/06/2002 16:45:50.940 SEV=10 AUTHDECODE/6 RPT=45  
Radius: Length = 6 (0x06)

500 08/06/2002 16:45:50.940 SEV=10 AUTHDECODE/11 RPT=13  
Radius: Value (Hex) = 0x1

501 08/06/2002 16:45:50.940 SEV=10 AUTHDECODE/5 RPT=46  
Radius: Type = 8 (0x08) Framed-IP-Address

502 08/06/2002 16:45:50.940 SEV=10 AUTHDECODE/6 RPT=46  
Radius: Length = 6 (0x06)

503 08/06/2002 16:45:50.940 SEV=10 AUTHDECODE/9 RPT=3  
Radius: Value (IP Address) = 10.10.10.1 (0x0A0A0A01)

504 08/06/2002 16:45:50.940 SEV=10 AUTHDECODE/5 RPT=47  
Radius: Type = 25 (0x19) Class

505 08/06/2002 16:45:50.940 SEV=10 AUTHDECODE/6 RPT=47  
Radius: Length = 32 (0x20)

506 08/06/2002 16:45:50.940 SEV=10 AUTHDECODE/7 RPT=18  
Radius: Value (String) =

507 08/06/2002 16:45:50.940 SEV=10 AUTHDECODE/0 RPT=38  
0000: 49200516 00000137 0001AB45 593C01C2 I .....7...EY<..  
0010: 037B9CB1 74320000 00000000 0023 .{.t2.....#

509 08/06/2002 16:45:50.940 SEV=10 AUTHDECODE/5 RPT=48

Radius: Type = 40 (0x28) Acct-Status-Type

510 08/06/2002 16:45:50.940 SEV=10 AUTHDECODE/6 RPT=48  
Radius: Length = 6 (0x06)

511 08/06/2002 16:45:50.940 SEV=10 AUTHDECODE/11 RPT=14  
Radius: Value (Hex) = 0x1

512 08/06/2002 16:45:50.940 SEV=10 AUTHDECODE/5 RPT=49  
Radius: Type = 44 (0x2C) Acct-Session-Id

513 08/06/2002 16:45:50.940 SEV=10 AUTHDECODE/6 RPT=49  
Radius: Length = 10 (0x0A)

514 08/06/2002 16:45:50.940 SEV=10 AUTHDECODE/7 RPT=19  
Radius: Value (String) =

515 08/06/2002 16:45:50.940 SEV=10 AUTHDECODE/0 RPT=39  
0000: 33453530 30303144 3E50001D

516 08/06/2002 16:45:50.940 SEV=10 AUTHDECODE/5 RPT=50  
Radius: Type = 66 (0x42) Tunnel-Client-Endpoint

517 08/06/2002 16:45:50.940 SEV=10 AUTHDECODE/6 RPT=50  
Radius: Length = 14 (0x0E)

518 08/06/2002 16:45:50.940 SEV=10 AUTHDECODE/7 RPT=20  
Radius: Value (String) =

519 08/06/2002 16:45:50.940 SEV=10 AUTHDECODE/0 RPT=40  
0000: 3137312E 36392E38 392E3930 171.69.89.90

520 08/06/2002 16:45:50.940 SEV=10 AUTHDECODE/5 RPT=51  
Radius: Type = 45 (0x2D) Acct-Authentic

521 08/06/2002 16:45:50.940 SEV=10 AUTHDECODE/6 RPT=51  
Radius: Length = 6 (0x06)

522 08/06/2002 16:45:50.940 SEV=10 AUTHDECODE/11 RPT=15  
Radius: Value (Hex) = 0x1

523 08/06/2002 16:45:50.940 SEV=10 AUTHDECODE/5 RPT=52  
Radius: Type = 41 (0x29) Acct-Delay-Time

524 08/06/2002 16:45:50.940 SEV=10 AUTHDECODE/6 RPT=52  
Radius: Length = 6 (0x06)

525 08/06/2002 16:45:50.940 SEV=10 AUTHDECODE/11 RPT=16  
Radius: Value (Hex) = 0x0

526 08/06/2002 16:45:50.940 SEV=10 AUTHDECODE/5 RPT=53  
Radius: Type = 4 (0x04) NAS-IP-Address

527 08/06/2002 16:45:50.940 SEV=10 AUTHDECODE/6 RPT=53  
Radius: Length = 6 (0x06)

528 08/06/2002 16:45:50.940 SEV=10 AUTHDECODE/9 RPT=4  
Radius: Value (IP Address) = 172.16.172.36 (0xAC10AC24)

529 08/06/2002 16:45:50.940 SEV=10 AUTHDECODE/5 RPT=54  
Radius: Type = 61 (0x3D) NAS-Port-Type

530 08/06/2002 16:45:50.940 SEV=10 AUTHDECODE/6 RPT=54  
Radius: Length = 6 (0x06)

531 08/06/2002 16:45:50.940 SEV=10 AUTHDECODE/11 RPT=17  
Radius: Value (Hex) = 0x5

532 08/06/2002 16:45:50.940 SEV=8 AUTHDBG/28 RPT=66  
Radius\_Xmt(9a9blec)

533 08/06/2002 16:45:50.940 SEV=9 AUTHDBG/71 RPT=307  
xmit\_cnt = 1

534 08/06/2002 16:45:51.040 SEV=8 AUTHDBG/30 RPT=66  
Radius\_Match(9a9blec, 500aacc), id = 0x3A, rcvd = 0x3A

535 08/06/2002 16:45:51.040 SEV=8 AUTHDBG/63 RPT=307  
AUTH\_RcvReply(9a9blec, 0, 0)

536 08/06/2002 16:45:51.040 SEV=8 AUTHDBG/31 RPT=132  
Radius\_Decode(500aacc, 20)

537 08/06/2002 16:45:51.040 SEV=13 AUTHDECODE/0 RPT=41  
0000: 053A0014 7DE07642 671D26FA 5B2E1904 .:.}.vBg.&.[...  
0010: 943FA41A .?..

539 08/06/2002 16:45:51.040 SEV=10 AUTHDECODE/1 RPT=6  
Radius: Code = 5 (0x05)

540 08/06/2002 16:45:51.040 SEV=10 AUTHDECODE/2 RPT=6  
Radius: Identifier = 58 (0x3A)

541 08/06/2002 16:45:51.040 SEV=10 AUTHDECODE/3 RPT=6  
Radius: Length = 20 (0x0014)

542 08/06/2002 16:45:51.040 SEV=10 AUTHDECODE/4 RPT=6  
Radius: Vector:

543 08/06/2002 16:45:51.040 SEV=10 AUTHDECODE/0 RPT=42  
0000: 7DE07642 671D26FA 5B2E1904 943FA41A }.vBg.&.[....?..

544 08/06/2002 16:45:51.040 SEV=8 AUTHDBG/29 RPT=66  
Radius\_Rcv(9a9blec)

545 08/06/2002 16:45:51.040 SEV=8 AUTHDBG/66 RPT=307  
AUTH\_DeleteTimer(9a9blec, 0, 0)

546 08/06/2002 16:45:51.040 SEV=9 AUTHDBG/74 RPT=307  
Reply timer stopped: handle = 5A180017, timestamp = 355275000

547 08/06/2002 16:45:51.040 SEV=8 AUTHDBG/58 RPT=307  
AUTH\_Callback(9a9blec, 0, 0)

548 08/06/2002 16:45:51.040 SEV=6 AUTH/10 RPT=31 171.69.89.90  
Accounting successful: handle = 104, server = 171.69.89.154, user = vpnuser1

549 08/06/2002 16:45:51.040 SEV=8 AUTHDBG/2 RPT=265  
AUTH\_Close(104)

550 08/06/2002 16:45:51.040 SEV=8 AUTHDBG/60 RPT=307  
AUTH\_UnbindServer(9a9blec, 0, 0)

551 08/06/2002 16:45:51.040 SEV=9 AUTHDBG/70 RPT=307  
Acct Server 1811fa4 has been unbound from ACB 9a9blec, sessions = 0

552 08/06/2002 16:45:51.040 SEV=8 AUTHDBG/10 RPT=265

AUTH\_Int\_FreeAuthCB(9a9blec)

553 08/06/2002 16:45:51.040 SEV=7 AUTH/13 RPT=266  
Authentication session closed: handle = 104

554 08/06/2002 16:45:54.890 SEV=5 IKE/50 RPT=37 171.69.89.90  
Group [windowsuser] User [vpuser1]  
Connection terminated for peer vpuser1 (Peer Terminate)  
Remote Proxy 10.10.10.1, Local Proxy 172.16.172.36

557 08/06/2002 16:45:54.890 SEV=8 AUTHDBG/1 RPT=266  
AUTH\_Open() returns 105

558 08/06/2002 16:45:54.890 SEV=7 AUTH/12 RPT=267  
Authentication session opened: handle = 105

559 08/06/2002 16:45:54.890 SEV=8 AUTHDBG/3 RPT=308  
AUTH\_PutAttrTable(105, 1b3b730)

560 08/06/2002 16:45:54.890 SEV=8 AUTHDBG/7 RPT=32  
AUTH\_Accounting(105, 0, 0)

561 08/06/2002 16:45:54.890 SEV=4 AUTH/28 RPT=23 171.69.89.90  
User [vpuser1] disconnected:  
Duration: 0:00:03  
Bytes xmt: 0  
Bytes rcv: 0  
Reason: User Requested

563 08/06/2002 16:45:54.890 SEV=8 AUTHDBG/59 RPT=308  
AUTH\_BindServer(9a043f0, 0, 0)

564 08/06/2002 16:45:54.890 SEV=9 AUTHDBG/69 RPT=308  
Acct Server 1811fa4 has been bound to ACB 9a043f0, sessions = 1

565 08/06/2002 16:45:54.890 SEV=8 AUTHDBG/65 RPT=308  
AUTH\_CreateTimer(9a043f0, 0, 0)

566 08/06/2002 16:45:54.890 SEV=9 AUTHDBG/72 RPT=308  
Reply timer created: handle = 5A19001B

567 08/06/2002 16:45:54.890 SEV=8 AUTHDBG/61 RPT=308  
AUTH\_BuildMsg(9a043f0, 0, 0)

568 08/06/2002 16:45:54.890 SEV=8 AUTHDBG/27 RPT=67  
Radius\_Build(9a043f0)

569 08/06/2002 16:45:54.890 SEV=8 AUTHDBG/64 RPT=308  
AUTH\_StartTimer(9a043f0, 0, 0)

570 08/06/2002 16:45:54.890 SEV=9 AUTHDBG/73 RPT=308  
Reply timer started: handle = 5A19001B, timestamp = 355275385, timeout = 1000

571 08/06/2002 16:45:54.890 SEV=8 AUTHDBG/62 RPT=308  
AUTH\_SndRequest(9a043f0, 0, 0)

572 08/06/2002 16:45:54.890 SEV=8 AUTHDBG/31 RPT=133  
Radius\_Decode(630894c, 176)

573 08/06/2002 16:45:54.890 SEV=13 AUTHDECODE/0 RPT=43  
0000: 043B00B0 295505F0 864A0A1F 6345232B .;..)U...J..cE##+  
0010: 81D315E5 010A7670 6E757365 72310506 .....vpuser1..  
0020: 0000041C 06060000 00020706 00000001 .....  
0030: 08060A0A 0A011920 49200516 00000137 ..... I .....7



0040: 0001AB45 593C01C2 037B9CB1 74320000 ...EY<...{..t2..  
0050: 00000000 00232806 00000002 2A060000 .....#(.....\*...  
0060: 00002B06 00000000 2C0A3345 35303030 ..+.....,3E5000  
0070: 31442E06 00000004 2F060000 00003006 1D...../.....0.  
0080: 00000000 31060000 0001420E 3137312E ....1.....B.171.  
0090: 36392E38 392E3930 2D060000 00012906 69.89.90-.....).  
00A0: 00000000 0406AC10 AC243D06 00000005 .....\$=.....

584 08/06/2002 16:45:54.890 SEV=10 AUTHDECODE/1 RPT=7  
Radius: Code = 4 (0x04)

585 08/06/2002 16:45:54.890 SEV=10 AUTHDECODE/2 RPT=7  
Radius: Identifier = 59 (0x3B)

586 08/06/2002 16:45:54.890 SEV=10 AUTHDECODE/3 RPT=7  
Radius: Length = 176 (0x00B0)

587 08/06/2002 16:45:54.890 SEV=10 AUTHDECODE/4 RPT=7  
Radius: Vector:

588 08/06/2002 16:45:54.890 SEV=10 AUTHDECODE/0 RPT=44  
0000: 295505F0 864A0A1F 6345232B 81D315E5 )U...J..cE#+.....

589 08/06/2002 16:45:54.890 SEV=10 AUTHDECODE/5 RPT=55  
Radius: Type = 1 (0x01) User-Name

590 08/06/2002 16:45:54.890 SEV=10 AUTHDECODE/6 RPT=55  
Radius: Length = 10 (0x0A)

591 08/06/2002 16:45:54.890 SEV=10 AUTHDECODE/7 RPT=21  
Radius: Value (String) =

592 08/06/2002 16:45:54.890 SEV=10 AUTHDECODE/0 RPT=45  
0000: 76706E75 73657231 vpnuser1

593 08/06/2002 16:45:54.900 SEV=10 AUTHDECODE/5 RPT=56  
Radius: Type = 5 (0x05) NAS-Port

594 08/06/2002 16:45:54.900 SEV=10 AUTHDECODE/6 RPT=56  
Radius: Length = 6 (0x06)

595 08/06/2002 16:45:54.900 SEV=10 AUTHDECODE/11 RPT=18  
Radius: Value (Hex) = 0x41C

596 08/06/2002 16:45:54.900 SEV=10 AUTHDECODE/5 RPT=57  
Radius: Type = 6 (0x06) Service-Type

597 08/06/2002 16:45:54.900 SEV=10 AUTHDECODE/6 RPT=57  
Radius: Length = 6 (0x06)

598 08/06/2002 16:45:54.900 SEV=10 AUTHDECODE/11 RPT=19  
Radius: Value (Hex) = 0x2

599 08/06/2002 16:45:54.900 SEV=10 AUTHDECODE/5 RPT=58  
Radius: Type = 7 (0x07) Framed-Protocol

600 08/06/2002 16:45:54.900 SEV=10 AUTHDECODE/6 RPT=58  
Radius: Length = 6 (0x06)

601 08/06/2002 16:45:54.900 SEV=10 AUTHDECODE/11 RPT=20  
Radius: Value (Hex) = 0x1

602 08/06/2002 16:45:54.900 SEV=10 AUTHDECODE/5 RPT=59  
Radius: Type = 8 (0x08) Framed-IP-Address

603 08/06/2002 16:45:54.900 SEV=10 AUTHDECODE/6 RPT=59  
Radius: Length = 6 (0x06)

604 08/06/2002 16:45:54.900 SEV=10 AUTHDECODE/9 RPT=5  
Radius: Value (IP Address) = 10.10.10.1 (0x0A0A0A01)

605 08/06/2002 16:45:54.900 SEV=10 AUTHDECODE/5 RPT=60  
Radius: Type = 25 (0x19) Class

606 08/06/2002 16:45:54.900 SEV=10 AUTHDECODE/6 RPT=60  
Radius: Length = 32 (0x20)

607 08/06/2002 16:45:54.900 SEV=10 AUTHDECODE/7 RPT=22  
Radius: Value (String) =

608 08/06/2002 16:45:54.900 SEV=10 AUTHDECODE/0 RPT=46  
0000: 49200516 00000137 0001AB45 593C01C2 I .....7...EY<..>  
0010: 037B9CB1 74320000 00000000 0023 .{..t2.....#

610 08/06/2002 16:45:54.900 SEV=10 AUTHDECODE/5 RPT=61  
Radius: Type = 40 (0x28) Acct-Status-Type

611 08/06/2002 16:45:54.900 SEV=10 AUTHDECODE/6 RPT=61  
Radius: Length = 6 (0x06)

612 08/06/2002 16:45:54.900 SEV=10 AUTHDECODE/11 RPT=21  
Radius: Value (Hex) = 0x2

613 08/06/2002 16:45:54.900 SEV=10 AUTHDECODE/5 RPT=62  
Radius: Type = 42 (0x2A) Acct-Input-Octets

614 08/06/2002 16:45:54.900 SEV=10 AUTHDECODE/6 RPT=62  
Radius: Length = 6 (0x06)

615 08/06/2002 16:45:54.900 SEV=10 AUTHDECODE/11 RPT=22  
Radius: Value (Hex) = 0x0

616 08/06/2002 16:45:54.900 SEV=10 AUTHDECODE/5 RPT=63  
Radius: Type = 43 (0x2B) Acct-Output-Octets

617 08/06/2002 16:45:54.900 SEV=10 AUTHDECODE/6 RPT=63  
Radius: Length = 6 (0x06)

618 08/06/2002 16:45:54.900 SEV=10 AUTHDECODE/11 RPT=23  
Radius: Value (Hex) = 0x0

619 08/06/2002 16:45:54.900 SEV=10 AUTHDECODE/5 RPT=64  
Radius: Type = 44 (0x2C) Acct-Session-Id

620 08/06/2002 16:45:54.900 SEV=10 AUTHDECODE/6 RPT=64  
Radius: Length = 10 (0x0A)

621 08/06/2002 16:45:54.900 SEV=10 AUTHDECODE/7 RPT=23  
Radius: Value (String) =

622 08/06/2002 16:45:54.900 SEV=10 AUTHDECODE/0 RPT=47  
0000: 33453530 30303144 3E50001D

623 08/06/2002 16:45:54.900 SEV=10 AUTHDECODE/5 RPT=65  
Radius: Type = 46 (0x2E) Acct-Session-Time

624 08/06/2002 16:45:54.900 SEV=10 AUTHDECODE/6 RPT=65  
Radius: Length = 6 (0x06)

625 08/06/2002 16:45:54.900 SEV=10 AUTHDECODE/11 RPT=24  
Radius: Value (Hex) = 0x4

626 08/06/2002 16:45:54.900 SEV=10 AUTHDECODE/5 RPT=66  
Radius: Type = 47 (0x2F) Acct-Input-Packets

627 08/06/2002 16:45:54.900 SEV=10 AUTHDECODE/6 RPT=66  
Radius: Length = 6 (0x06)

628 08/06/2002 16:45:54.900 SEV=10 AUTHDECODE/11 RPT=25  
Radius: Value (Hex) = 0x0

629 08/06/2002 16:45:54.900 SEV=10 AUTHDECODE/5 RPT=67  
Radius: Type = 48 (0x30) Acct-Output-Packets

630 08/06/2002 16:45:54.900 SEV=10 AUTHDECODE/6 RPT=67  
Radius: Length = 6 (0x06)

631 08/06/2002 16:45:54.900 SEV=10 AUTHDECODE/11 RPT=26  
Radius: Value (Hex) = 0x0

632 08/06/2002 16:45:54.900 SEV=10 AUTHDECODE/5 RPT=68  
Radius: Type = 49 (0x31) Acct-Terminate-Cause

633 08/06/2002 16:45:54.900 SEV=10 AUTHDECODE/6 RPT=68  
Radius: Length = 6 (0x06)

634 08/06/2002 16:45:54.900 SEV=10 AUTHDECODE/11 RPT=27  
Radius: Value (Hex) = 0x1

635 08/06/2002 16:45:54.900 SEV=10 AUTHDECODE/5 RPT=69  
Radius: Type = 66 (0x42) Tunnel-Client-Endpoint

636 08/06/2002 16:45:54.900 SEV=10 AUTHDECODE/6 RPT=69  
Radius: Length = 14 (0x0E)

637 08/06/2002 16:45:54.900 SEV=10 AUTHDECODE/7 RPT=24  
Radius: Value (String) =

638 08/06/2002 16:45:54.900 SEV=10 AUTHDECODE/0 RPT=48  
0000: 3137312E 36392E38 392E3930 171.69.89.90

639 08/06/2002 16:45:54.900 SEV=10 AUTHDECODE/5 RPT=70  
Radius: Type = 45 (0x2D) Acct-Authentic

640 08/06/2002 16:45:54.900 SEV=10 AUTHDECODE/6 RPT=70  
Radius: Length = 6 (0x06)

641 08/06/2002 16:45:54.900 SEV=10 AUTHDECODE/11 RPT=28  
Radius: Value (Hex) = 0x1

642 08/06/2002 16:45:54.900 SEV=10 AUTHDECODE/5 RPT=71  
Radius: Type = 41 (0x29) Acct-Delay-Time

643 08/06/2002 16:45:54.900 SEV=10 AUTHDECODE/6 RPT=71  
Radius: Length = 6 (0x06)<

644 08/06/2002 16:45:54.900 SEV=10 AUTHDECODE/11 RPT=29  
Radius: Value (Hex) = 0x0

645 08/06/2002 16:45:54.900 SEV=10 AUTHDECODE/5 RPT=72  
Radius: Type = 4 (0x04) NAS-IP-Address

646 08/06/2002 16:45:54.900 SEV=10 AUTHDECODE/6 RPT=72  
Radius: Length = 6 (0x06)

647 08/06/2002 16:45:54.900 SEV=10 AUTHDECODE/9 RPT=6  
Radius: Value (IP Address) = 172.16.172.36 (0xAC10AC24)

648 08/06/2002 16:45:54.900 SEV=10 AUTHDECODE/5 RPT=73  
Radius: Type = 61 (0x3D) NAS-Port-Type

649 08/06/2002 16:45:54.900 SEV=10 AUTHDECODE/6 RPT=73  
Radius: Length = 6 (0x06)

650 08/06/2002 16:45:54.900 SEV=10 AUTHDECODE/11 RPT=30  
Radius: Value (Hex) = 0x5

651 08/06/2002 16:45:54.900 SEV=8 AUTHDBG/28 RPT=67  
Radius\_Xmt(9a043f0)

652 08/06/2002 16:45:54.900 SEV=9 AUTHDBG/71 RPT=308  
xmit\_cnt = 1

653 08/06/2002 16:45:54.900 SEV=6 IKE/38 RPT=31 171.69.89.90  
Header invalid, missing SA payload! (next payload = 8)

654 08/06/2002 16:45:54.990 SEV=8 AUTHDBG/30 RPT=67  
Radius\_Match(9a043f0, 5009d58), id = 0x3B, rcvd = 0x3B

655 08/06/2002 16:45:54.990 SEV=8 AUTHDBG/63 RPT=308  
AUTH\_RcvReply(9a043f0, 0, 0)

656 08/06/2002 16:45:54.990 SEV=8 AUTHDBG/31 RPT=134  
Radius\_Decode(5009d58, 20)

657 08/06/2002 16:45:54.990 SEV=13 AUTHDECODE/0 RPT=49  
0000: 053B0014 A7C83B83 2EA5C679 FB0B4540 .i....i....y..E@  
0010: 4F1A83EB O...

659 08/06/2002 16:45:54.990 SEV=10 AUTHDECODE/1 RPT=8  
Radius: Code = 5 (0x05)

660 08/06/2002 16:45:54.990 SEV=10 AUTHDECODE/2 RPT=8  
Radius: Identifier = 59 (0x3B)

661 08/06/2002 16:45:54.990 SEV=10 AUTHDECODE/3 RPT=8  
Radius: Length = 20 (0x0014)

662 08/06/2002 16:45:54.990 SEV=10 AUTHDECODE/4 RPT=8  
Radius: Vector:

663 08/06/2002 16:45:54.990 SEV=10 AUTHDECODE/0 RPT=50  
0000: A7C83B83 2EA5C679 FB0B4540 4F1A83EB ..i....y..E@O...

664 08/06/2002 16:45:54.990 SEV=8 AUTHDBG/29 RPT=67  
Radius\_Rcv(9a043f0)

665 08/06/2002 16:45:54.990 SEV=8 AUTHDBG/66 RPT=308  
AUTH\_DeleteTimer(9a043f0, 0, 0)

666 08/06/2002 16:45:54.990 SEV=9 AUTHDBG/74 RPT=308  
Reply timer stopped: handle = 5A19001B, timestamp = 355275395

667 08/06/2002 16:45:54.990 SEV=8 AUTHDBG/58 RPT=308  
AUTH\_Callback(9a043f0, 0, 0)

668 08/06/2002 16:45:54.990 SEV=6 AUTH/10 RPT=32 171.69.89.90  
Accounting successful: handle = 105, server = 171.69.89.154, user = vpnuser1

669 08/06/2002 16:45:54.990 SEV=8 AUTHDBG/2 RPT=266  
AUTH\_Close(105)

670 08/06/2002 16:45:54.990 SEV=8 AUTHDBG/60 RPT=308  
AUTH\_UnbindServer(9a043f0, 0, 0)

671 08/06/2002 16:45:54.990 SEV=9 AUTHDBG/70 RPT=308  
Acct Server 1811fa4 has been unbound from ACB 9a043f0, sessions = 0

672 08/06/2002 16:45:54.990 SEV=8 AUTHDBG/10 RPT=266  
AUTH\_Int\_FreeAuthCB(9a043f0)

673 08/06/2002 16:45:54.990 SEV=7 AUTH/13 RPT=267  
Authentication session closed: handle = 105

## **相關資訊**

- [Cisco VPN 3000系列集中器支援頁面](#)
- [Cisco VPN 3000系列使用者端支援頁面](#)
- [IPSec支援頁面](#)
- [技術支援 - Cisco Systems](#)