

使用ODBC配置MS SQL的ISE 2.1

目錄

[簡介](#)

[必要條件](#)

[需求](#)

[採用元件](#)

[設定](#)

[步驟1. MS SQL基本配置](#)

[步驟2. ISE基本配置](#)

[步驟3. 配置使用者身份驗證](#)

[步驟4. 配置組檢索](#)

[步驟5. 配置屬性檢索](#)

[疑難排解](#)

簡介

本文檔介紹如何使用Microsoft標準查詢語言(SQL)伺服器配置身份服務引擎(ISE)，以便使用開放資料庫連線(ODBC)進行ISE身份驗證

附註：開放式資料庫連線(ODBC)身份驗證要求ISE能夠獲取純文字檔案使用者密碼。密碼可以在資料庫中加密，但必須通過儲存過程解密。

必要條件

需求

思科建議您瞭解以下主題：

- 資料庫和ODBC概念
- Microsoft SQL Server

採用元件

本文中的資訊係根據以下軟體和硬體版本：

- 身分識別服務引擎2.1
- MSSQL Server 2008 R2

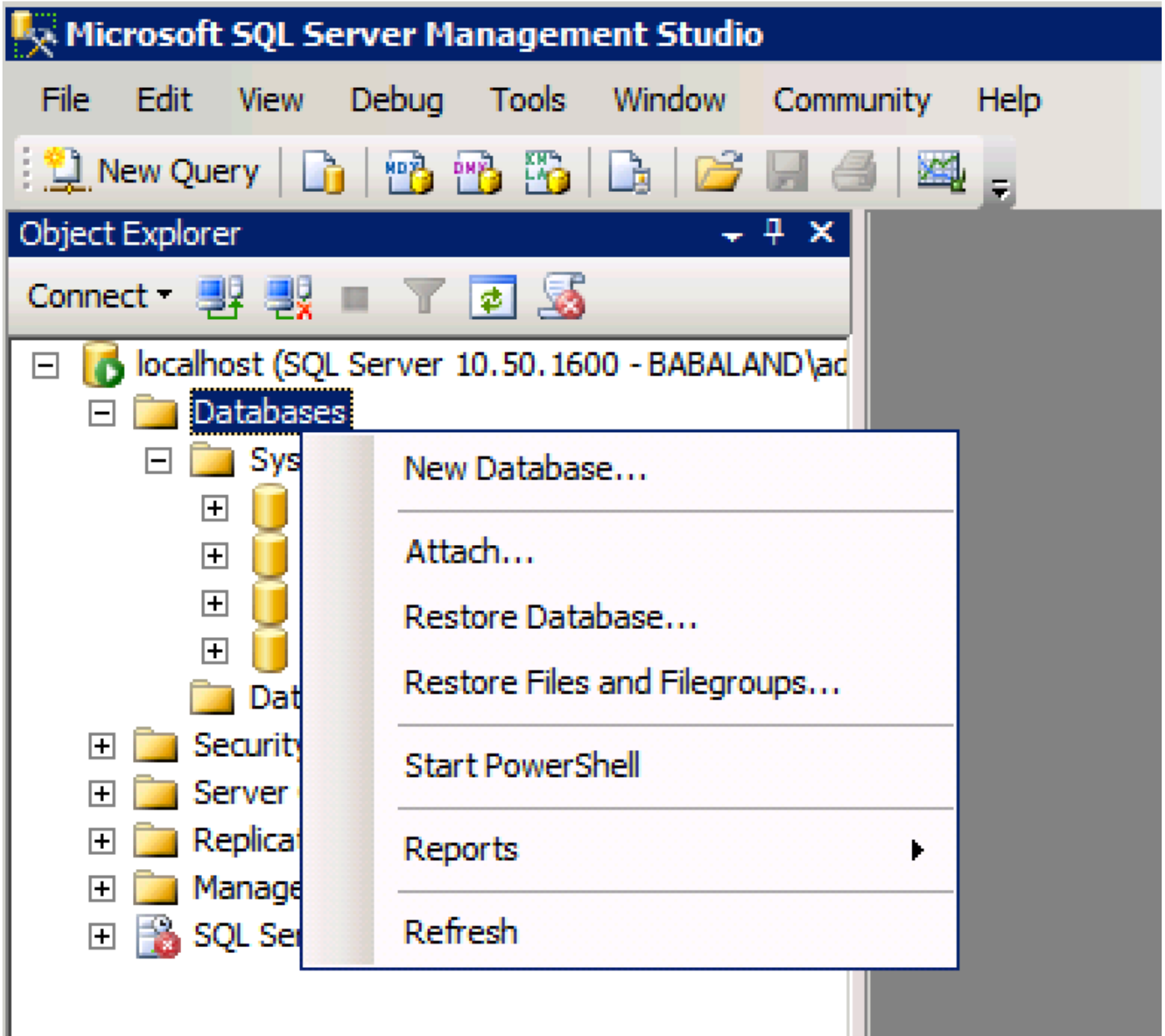
設定

步驟1. MS SQL基本配置

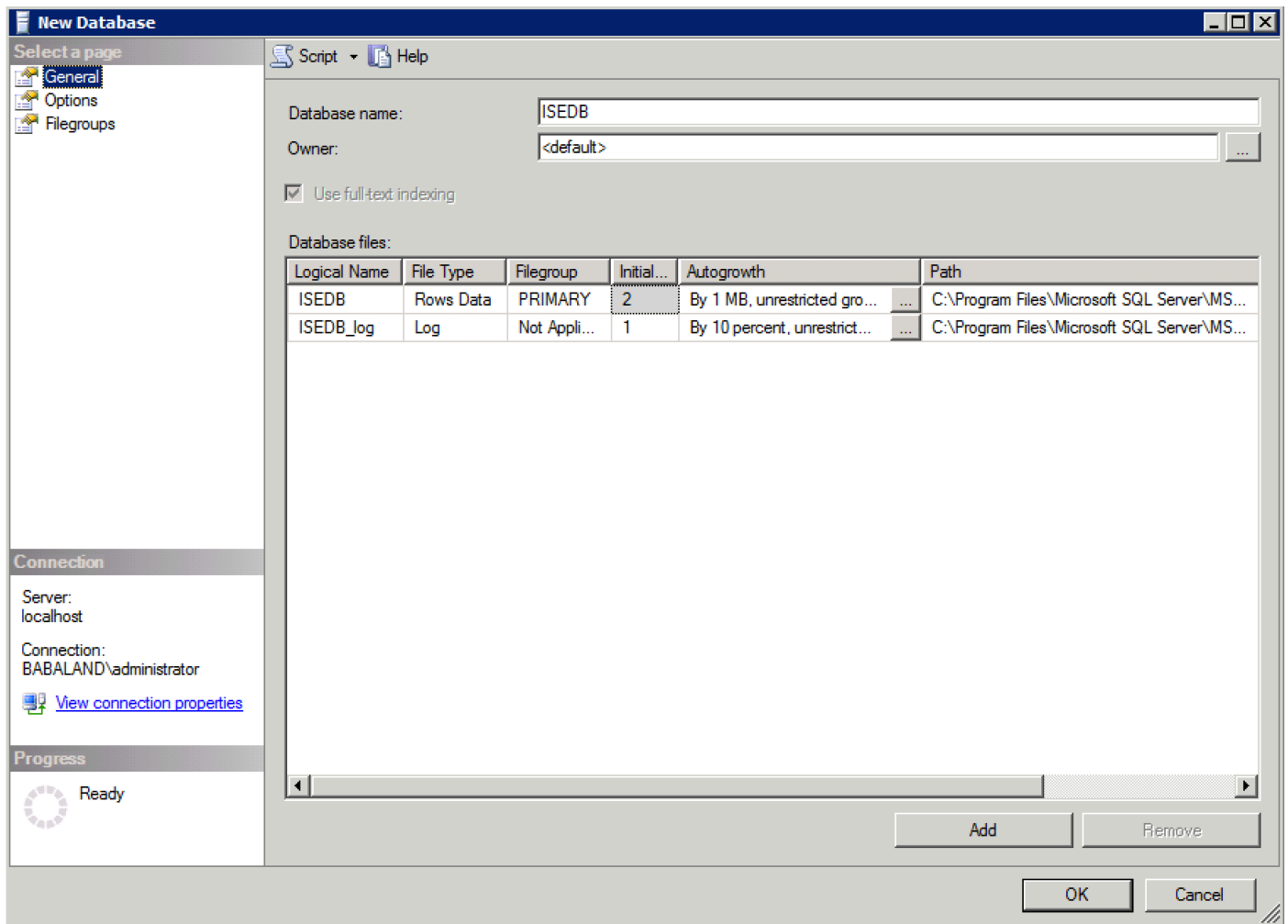
配置步驟包括為ISE建立資料庫和一個有權訪問該資料庫的使用者。

附註：ISE僅支援SQL身份驗證，而不支援Windows帳戶。如果需要更改身份驗證模式，請參閱[更改伺服器身份驗證模式](#)

1.開啟SQL Server Management Studio(「開始」選單> Microsoft SQL Server 2008 R2)並建立資料庫：



2.保留預設選項或調整資料庫設定，如下圖所示：



3. 建立使用者並設定許可權，如下圖所示：

Microsoft SQL Server Management Studio

File Edit View Debug Tools Window Community



Object Explorer



- [-] localhost (SQL Server 10.50.1600 - BABALAND\ad...)
 - + Databases
 - [-] Security
 - [-] Logins
 - [New Login...]
 - Filter
 - Start PowerShell
 - Reports
 - Refresh
 - + Servers
 - + Credentials

New Login...

Filter

Start PowerShell

Reports

Refresh

Login - New [Minimize] [Maximize] [Close]

Select a page

- General
- Server Roles
- User Mapping
- Securables
- Status

Script Help

Login name: Search...

Windows authentication

SQL Server authentication

Password:

Confirm password:

Specify old password

Old password:

Enforce password policy

Enforce password expiration

User must change password at next login

Mapped to certificate

Mapped to asymmetric key

Map to Credential Add

Mapped Credentials

Credential	Provider
------------	----------

Remove

Default database:

Default language:

OK Cancel

Connection

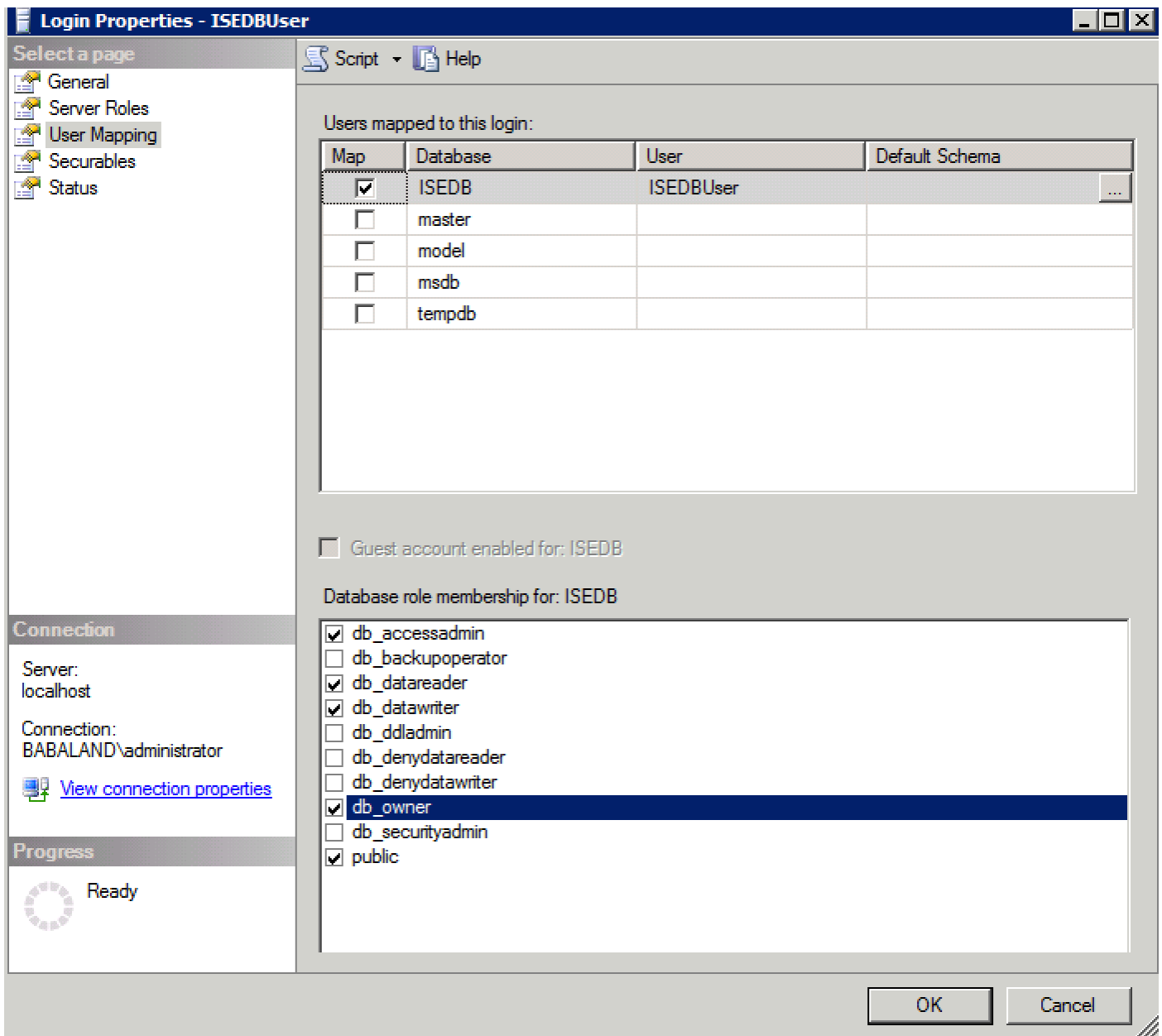
Server: localhost

Connection: BABALAND\Administrator

[View connection properties](#)

Progress

Ready



步驟2. ISE基本配置

在**管理>外部身份源> ODBC**處建立ODBC身份源，然後測試連線：

ODBC Identity Source

General **Connection** Stored Procedures Attributes Groups

ODBC DB connection details

* Hostname/IP[:port]

* Database name

Admin username ⓘ

Admin password

* Timeout

* Retries

* Database type

Test connection X

Connection succeeded

Stored Procedures

- Plain text password authentication - Not Configured
- Plain text password fetching - Not Configured
- Check username or machine exists - Not Configured
- Fetch groups - Not Configured
- Fetch attributes - Not Configured

步驟3.配置使用者身份驗證

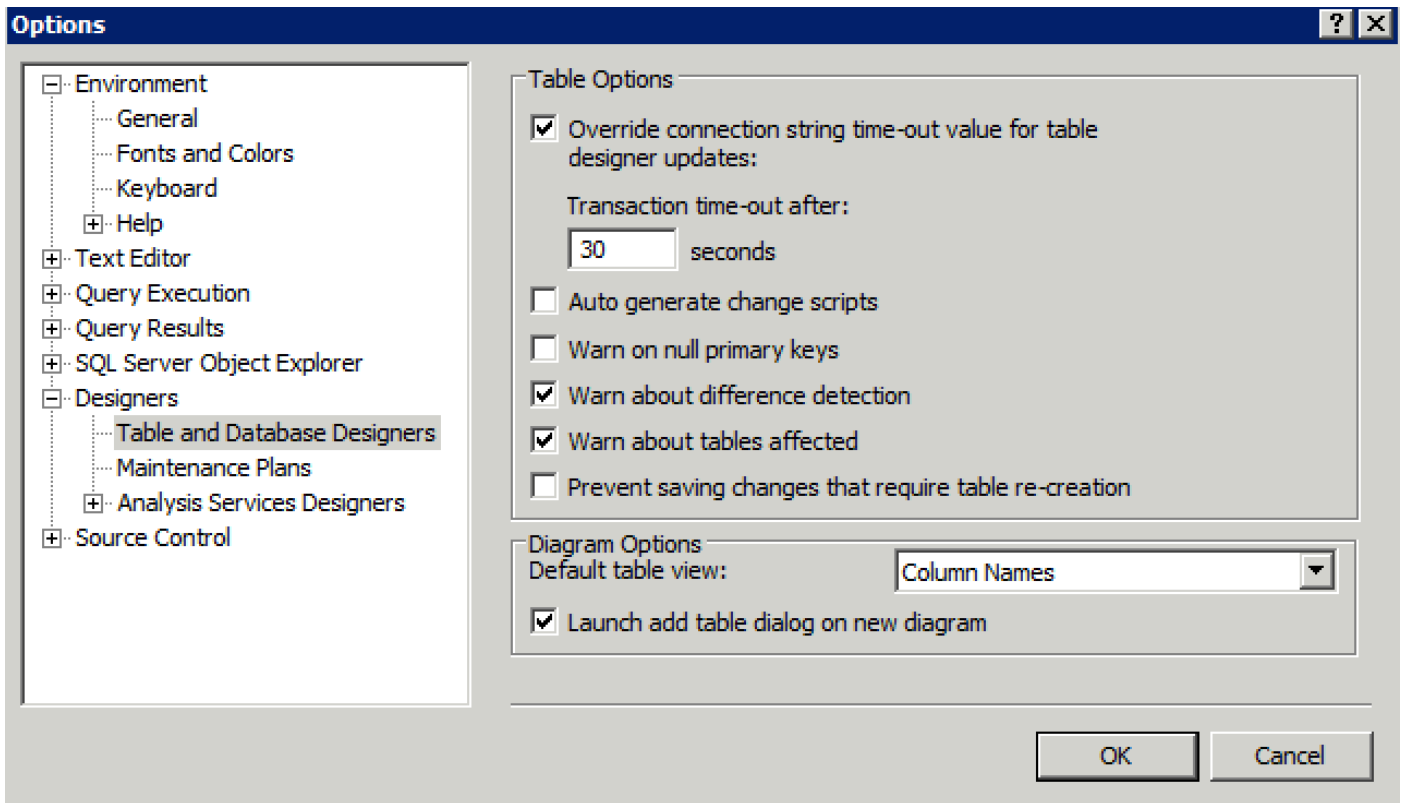
對ODBC的ISE身份驗證使用儲存過程。用於身份驗證的儲存過程返回帶有以下語法的resultset:

價值	類型
結果	整數
組 (僅用於與ACS 4.2的相容性)	整數或varchar(255)
帳戶資訊	varchar(255)
錯誤字串	varchar(255)

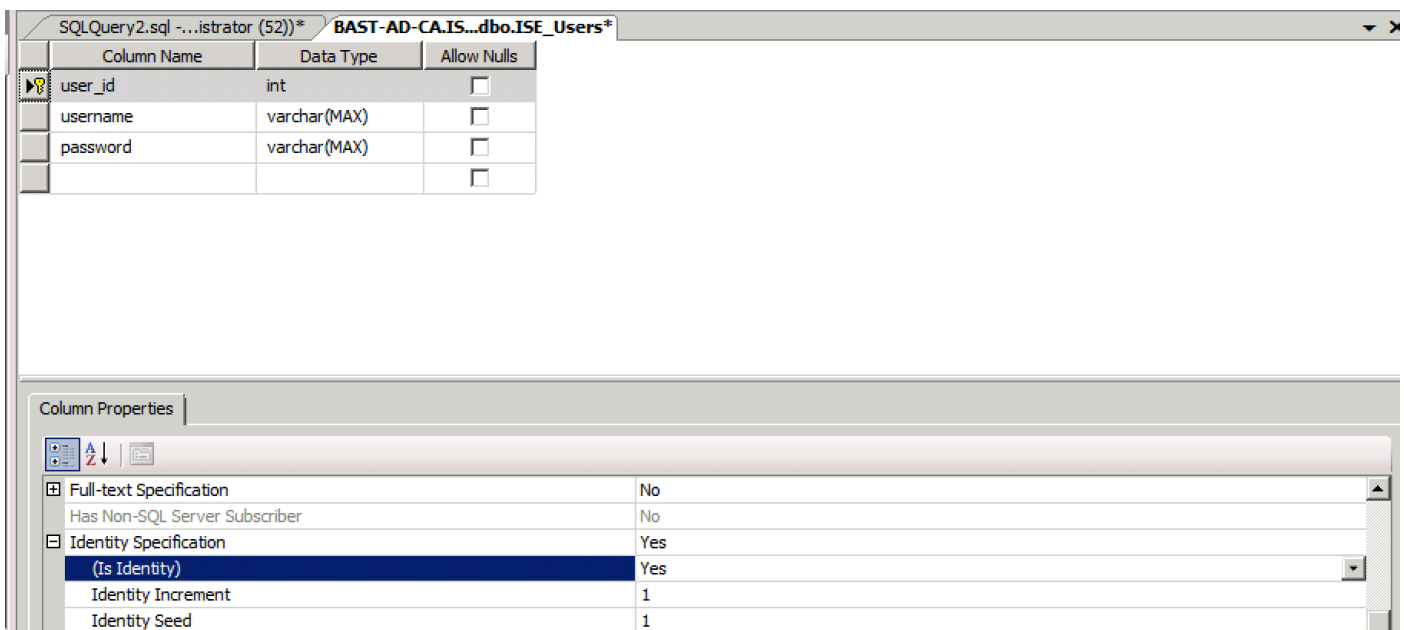
有關其他步驟，請參閱[思科身份服務引擎2.1管理指南](#)

提示：可以返回命名引數而不是resultset。它只是一種不同型別的輸出，功能是相同的。

1.定位至選項並取消選中**阻止儲存需要重新建立表的更改**獲取方塊（可選）：



2. 建立表。請確保在主鍵上設定身份設定。要將user_id設定為主鍵，請按一下右鍵列名稱：



最終SQL:

```
CREATE TABLE [dbo].[ISE_Users](
[user_id] [int] IDENTITY(1,1) NOT NULL,
[username] [varchar](max) NOT NULL,
[password] [varchar](max) NOT NULL,
CONSTRAINT [PK_ISE_Users] PRIMARY KEY CLUSTERED
(
```



```
[user_id] ASC
)WITH (PAD_INDEX = OFF, STATISTICS_NORECOMPUTE = OFF, IGNORE_DUP_KEY = OFF, ALLOW_ROW_LOCKS =
ON, ALLOW_PAGE_LOCKS = ON) ON [PRIMARY]
) ON [PRIMARY]
```

3. 運行此查詢以插入一個使用者：

```
insert into ISE_Users(username,password) values('odbcuser1','odbcpass');
```

4. 建立純文字檔案密碼身份驗證的過程 (用於PAP、EAP-GTC內部方法、TACACS)：

```
CREATE PROCEDURE [dbo].[ISEAuthUserPlainReturnsRecordset]
@username varchar(255), @password varchar(255)
AS
BEGIN
IF EXISTS( SELECT username
FROM ISE_Users
WHERE username = @username
AND password = @password )
SELECT 0,11,'This is a very good user, give him all access','No Error'
FROM ISE_Users
WHERE username = @username
ELSE
SELECT 3,0,'odbc','ODBC Authen Error'
END
```

5. 建立純文字檔案密碼提取過程(用於CHAP、MSCHAPv1/v2、EAP-MD5、LEAP、EAP-MSCHAPv2內部方法、TACACS):

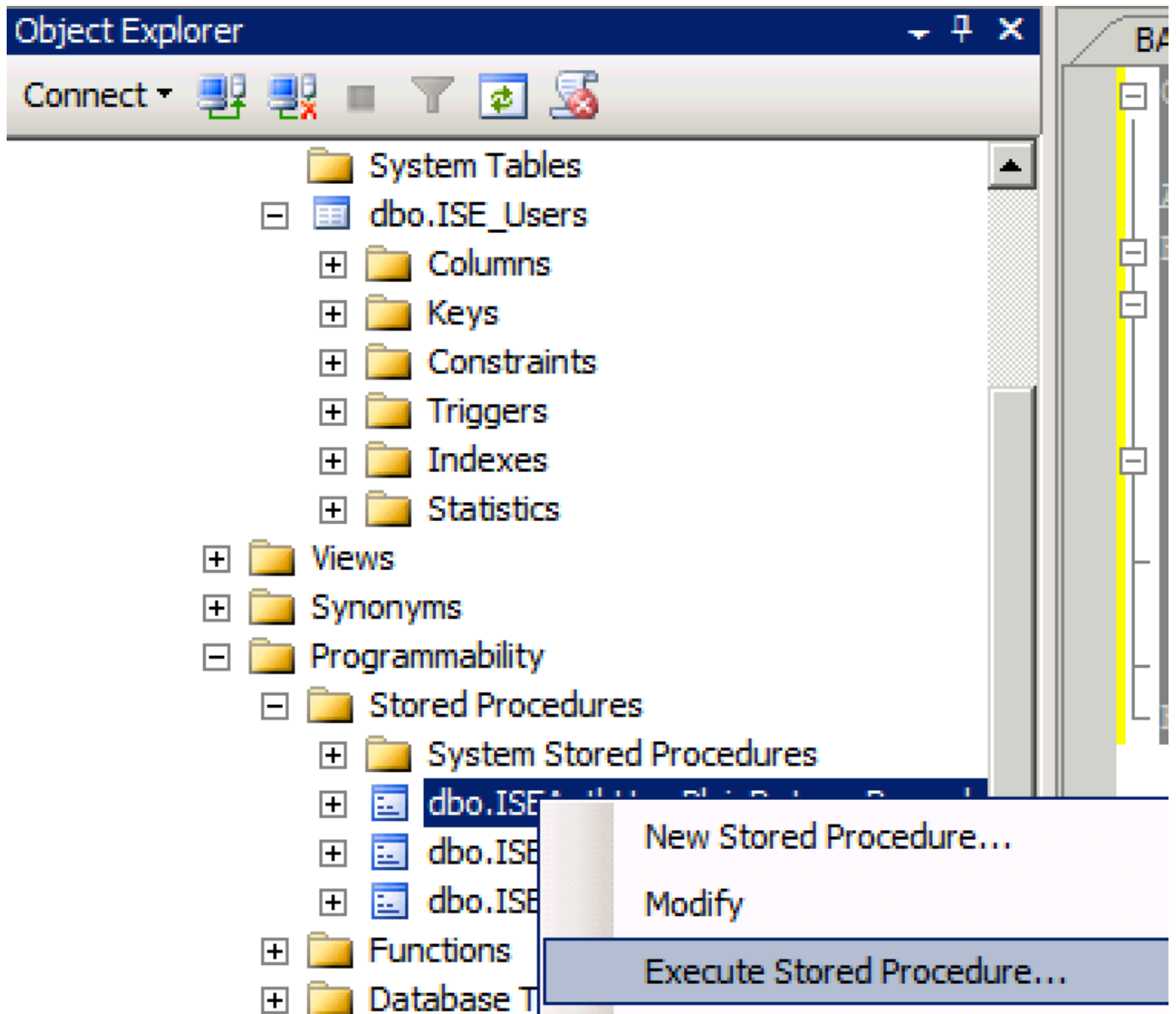
```
CREATE PROCEDURE [dbo].[ISEFetchPasswordReturnsRecordset]
@username varchar(255)
AS
BEGIN
IF EXISTS( SELECT username
FROM ISE_Users
WHERE username = @username)
SELECT 0,11,'This is a very good user, give him all access','No Error',password
FROM ISE_Users
WHERE username = @username
ELSE
SELECT 3,0,'odbc','ODBC Authen Error'
END
```

6. 建立檢查使用者名稱或電腦存在的過程(用於MAB、快速重新連線PEAP、EAP-FAST和EAP-TTLS):

```
CREATE PROCEDURE [dbo].[ISEUserLookupReturnsRecordset]
@username varchar(255)
AS
BEGIN
IF EXISTS( SELECT username
```

```
FROM ISE_Users
WHERE username = @username)
SELECT 0,11,'This is a very good user, give him all access','No Error'
FROM ISE_Users
WHERE username = @username
ELSE
SELECT 3,0,'odbc','ODBC Authen Error'
END
```

7.測試建立的過程：



Execute Procedure - [dbo].[ISEAuthUserPlainReturnsRecordset]

Select a page: General

Script Help

Parameter	Data Type	Output Parameter	Pass Null Value	Value
@username	varchar(255)	No	<input type="checkbox"/>	odbcuser1
@password	varchar(255)	No	<input type="checkbox"/>	odbcpass

Connection

Server: localhost

Connection: BABALAND\administrator

[View connection properties](#)

Progress

Ready

OK Cancel

SQLQuery5.sql -...inistrator (57)) BAST-AD-CA.IS...dbo.ISE_Users SQLQuery2.sql -...istrator (52))* BAST-AD-CA.IS...dbo.ISE_Users

```

USE [ISEDB]
GO

DECLARE @return_value int

EXEC @return_value = [dbo].[ISEAuthUserPlainReturnsRecordset]
    @username = N'odbcuser1',
    @password = N'odbcpass'

SELECT 'Return Value' = @return_value

GO

```

Results Messages

	(No column name)	(No column name)	(No column name)	(No column name)
1	0	11	This is a very good user, give him all access	No Error

以相同方式測試其他程式。

8.在ISE上配置過程並儲存：

ODBC List > ISE_ODBC

ODBC Identity Source

General Connection **Stored Procedures** Attributes Groups

Stored procedure type: Returns recordset

Plain text password authentication: ISEAuthUserPlainReturnsRecordset

Plain text password fetching: ISEFetchPasswordReturnsRecordset

Check username or machine exists: ISEUserLookupReturnsRecordset

Fetch groups: []

Fetch attributes: []

Search for MAC Address in format: xx-xx-xx-xx-xx-xx

9.使用ODBC建立簡單身份驗證規則並進行測試：

Authentication Policy

<input checked="" type="checkbox"/>	MAB	: If Wired_MAB OR Wireless_MAB	Allow Protocols : Default Network Access	and	Edit ▾
<input checked="" type="checkbox"/>	Default	:use Internal Endpoints			
<input checked="" type="checkbox"/>	Dot1X	: If Wired_802.1X OR Wireless_802.1X	Allow Protocols : Default Network Access	and	Edit ▾
<input checked="" type="checkbox"/>	Default	:use All_User_ID_Stores			
<input checked="" type="checkbox"/>	test_aaa	: If Radius:Service-Type EQUALS Login	Allow Protocols : Default Network Access	and	Edit ▾
<input checked="" type="checkbox"/>	Default	:use ISE_ODBC			

```
b3560#test aaa group ISE236 odbcuser1 odbcpass legacy
Attempting authentication test to server-group ISE236 using radius
User was successfully authenticated.
```

Overview

Event	5200 Authentication succeeded
Username	odbcuser1
Endpoint Id	
Endpoint Profile	
Authentication Policy	Default >> test_aaa >> Default
Authorization Policy	Default >> Default
Authorization Result	PermitAccess

Authentication Details

Source Timestamp	2016-06-08 11:04:07.004
Received Timestamp	2016-06-08 11:04:07.005
Policy Server	bise236
Event	5200 Authentication succeeded
Username	odbcuser1
Authentication Identity Store	ISE_ODBC

Steps

```
11001 Received RADIUS Access-Request
11017 RADIUS created a new session
11117 Generated a new session ID for a 3rd party NAD
15049 Evaluating Policy Group
15008 Evaluating Service Selection Policy
15048 Queried PIP - Radius.NAS-Port-Type
15048 Queried PIP - Normalised Radius.RadiusFlowType (4 times)
15048 Queried PIP - Radius.Service-Type
15004 Matched rule - test_aaa
15041 Evaluating Identity Policy
15006 Matched Default Rule
15013 Selected Identity Source - ISE_ODBC
24852 Perform plain text password authentication in external ODBC database - ISE_ODBC
24849 Connecting to external ODBC database - ISE_ODBC
24850 Successfully connected to external ODBC database - ISE_ODBC
24855 Expect external ODBC database stored procedure to return results in a recordset - ISE_ODBC
22037 Authentication Passed
15036 Evaluating Authorization Policy
15048 Queried PIP - Radius.User-Name
15048 Queried PIP - Network Access.UseCase
15048 Queried PIP - Normalised Radius.RadiusFlowType (5 times)
15004 Matched rule - Default
```

步驟4. 配置組檢索

1. 建立包含使用者組和用於多對多對映的表：

```
CREATE TABLE [dbo].[Groups] (
  [Group_ID] [int] IDENTITY(1,1) NOT NULL,
  [Group_Name] [varchar](max) NOT NULL,
  [Group_Desc] [text] NOT NULL,
  CONSTRAINT [PK_Groups] PRIMARY KEY CLUSTERED
  (
    [Group_ID] ASC
  )WITH (PAD_INDEX = OFF, STATISTICS_NORECOMPUTE = OFF, IGNORE_DUP_KEY = OFF, ALLOW_ROW_LOCKS = ON, ALLOW_PAGE_LOCKS = ON) ON [PRIMARY]
) ON [PRIMARY] TEXTIMAGE_ON [PRIMAR
```

```
CREATE TABLE [dbo].[User_Groups_Mapping] (
  [user_id] [int] NOT NULL,
  [group_id] [int] NOT NULL
) ON [PRIMARY]
```

```
ALTER TABLE dbo.User_Groups_Mapping ADD CONSTRAINT
FK_User_Groups_Mapping_Groups FOREIGN KEY
(
  group_id
) REFERENCES dbo.Groups
(
  Group_ID
) ON UPDATE CASCADE
ON DELETE CASCADE
```

```
GO
ALTER TABLE dbo.User_Groups_Mapping ADD CONSTRAINT
FK_User_Groups_Mapping_ISE_Users FOREIGN KEY
(
  user_id
```

```

) REFERENCES dbo.ISE_Users
(
user_id
) ON UPDATE CASCADE
ON DELETE CASCADE

```

2.新增組和對映，使ODBCUSER1同時屬於兩個組：

```

INSERT [dbo].[Groups] ([Group_ID], [Group_Name], [Group_Desc]) VALUES (1, N'ODBCGroup1', N'My
Nice Group1')
INSERT [dbo].[User_Groups_Mapping] ([user_id], [group_id]) VALUES (1, 1)
INSERT [dbo].[Groups] ([Group_ID], [Group_Name], [Group_Desc]) VALUES (2, N'ODBCGroup2', N'My
Nice Group2')
INSERT [dbo].[User_Groups_Mapping] ([user_id], [group_id]) VALUES (1, 2)

```

3.建立組檢索過程：

```

CREATE PROCEDURE [dbo].[ISEGroupsRetrieval]
@username varchar(255), @result int output
AS
BEGIN
if exists (select * from ISE_Users where username = @username)
begin
set @result = 0
select Group_Name from Groups where group_id in (select group_ID from User_Groups_Mapping where
User_Groups_Mapping.USER_ID IN (select USER_ID from ISE_Users where username=@username ) )
end
else
set @result = 1
END

```

4.將其對映到提取組：

[ODBC List > ISE_ODBC](#)

ODBC Identity Source

General	Connection	Stored Procedures	Attributes	Groups
Stored procedure type		Returns recordset		
Plain text password authentication	ISEAuthUserPlainReturnsRecordset			
Plain text password fetching	ISEFetchPasswordReturnsRecordset			
Check username or machine exists	ISEUserLookupReturnsRecordset			
Fetch groups		ISEGroupsRetrieval		
Fetch attributes		ISEAttrsRetrieval		
Search for MAC Address in format		xx-xx-xx-xx-xx-xx		

5.獲取組並將其新增到ODBC身份源：

ODBC Identity Source

- General Connection Stored Procedures Attributes **Groups**

Edit + Add X Delete

Name	Name in ISE
No data available	

Select Groups from ODBC X

Sample User or Machine: Retrieve Groups

Name	Name in ISE
<input checked="" type="checkbox"/> ODBCGroup1	ODBCGroup1
<input checked="" type="checkbox"/> ODBCGroup2	ODBCGroup2

OK Cancel

6.新增不屬於任何組的另一個使用者：

```
insert into ISE_Users(username,password) values('odbcuser2','odbcpass');
```

7.建立特定策略集並測試：

Policy Sets Profiling Posture Client Provisioning Policy Elements

Policy Sets

Search policy names & descriptions.

Summary of Policies

Global Exceptions

TestAAA

VPN

Default

Save Order Reset Order

Define the Policy Sets by configuring rules based on conditions. Drag and drop sets on the left hand side to change the order.

For Policy Export go to [Administration > System > Backup & Restore > Policy Export Page](#)

Status	Name	Description	Conditions	Permissions	Edit
<input checked="" type="checkbox"/>	TestAAA		Radius:Service-Type EQUALS Login		Edit

Authentication Policy

<input checked="" type="checkbox"/>	Default Rule (if no match)	Allow Protocols : Default Network Access	and use : ISE_ODBC		Edit
-------------------------------------	----------------------------	--	--------------------	--	------

Authorization Policy

Exceptions (0)

Standard

Status	Rule Name	Conditions (identity groups and other conditions)	Permissions	Edit
<input checked="" type="checkbox"/>	Group1Access	if ISE_ODBC:ExternalGroups EQUALS ODBCGroup1	then PermitAccess	Edit
<input checked="" type="checkbox"/>	Default	if no matches, then	DenyAccess	Edit

```
b3560#test aaa group ISE236 odbcuser2 odhcpass legacy
Attempting authentication test to server-group ISE236 using radius
User authentication request was rejected by server.
```

```
b3560#test aaa group ISE236 odbcuser1 odhcpass legacy
Attempting authentication test to server-group ISE236 using radius
User was successfully authenticated.
```

AuthorizationPolicyMatchedRule	Group1Access
CPMSessionID	0a3027eci0HeVTM3/bn5vLXkWMcJ0em5rzUDaOSnbMmAvL7jcfY
ISEPolicySetName	TestAAA
AllowedProtocolMatchedRule	Default
IdentitySelectionMatchedRule	Default
Network Device Profile	Cisco
Location	Location#All Locations
Device Type	Device Type#All Device Types
ExternalGroups	ODBCGroup1
ExternalGroups	ODBCGroup2
RADIUS Username	odbcuser1

步驟5.配置屬性檢索

1.為了簡化此示例，將平面表用於屬性：

```
CREATE TABLE [dbo].[User_Attributes] (
[user_id] [int] NOT NULL,
[Attribute_Name] [varchar](max) NOT NULL,
[Attribute_Value] [varchar](max) NOT NULL
) ON [PRIMARY]
```

GO

```
ALTER TABLE [dbo].[User_Attributes] WITH CHECK ADD CONSTRAINT [FK_User_Attributes_ISE_Users]
FOREIGN KEY([user_id])
REFERENCES [dbo].[ISE_Users] ([user_id])
ON UPDATE CASCADE
ON DELETE CASCADE
GO
```

2.為以下使用者之一建立屬性：

```
INSERT [dbo].[User_Attributes] ([user_id], [Attribute_Name], [Attribute_Value]) VALUES (2,
N'AwsomenessLevel', N'100')
INSERT [dbo].[User_Attributes] ([user_id], [Attribute_Name], [Attribute_Value]) VALUES (2,
N'UserType', N'admin')
```

3.建立存儲過程：

```
CREATE PROCEDURE [dbo].[ISEAttrsRetrieval]
@username varchar(255), @result int output
AS
BEGIN
if exists (select * from ISE_Users where username = @username)
begin
```



```

set @result = 0
select attribute_name , attribute_value from user_attributes where USER_ID in(SELECT USER_ID
from ISE_Users where username = @username)
end
else
set @result = 1
END

```

4.將其對映到提取屬性：

[ODBC List > ISE_ODBC](#)

ODBC Identity Source

General Connection **Stored Procedures** Attributes Groups

Stored procedure type Returns recordset ▼

Plain text password authentication ISEAuthUserPlainReturnsRecordset ⓘ ⊕

Plain text password fetching ISEFetchPasswordReturnsRecordset ⓘ ⊕

Check username or machine exists ISEUserLookupReturnsRecordset ⓘ ⊕

Fetch groups ISEGroupsRetrieval ⓘ ⊕

Fetch attributes ISEAttrsRetrieval ⓘ ⊕

Search for MAC Address in format xx-xx-xx-xx-xx-xx ▼ ⓘ

5.獲取屬性：

Select Attributes from ODBC X

Sample User or Machine ⓘ

<input type="checkbox"/>	Name	Type ▲	Default Value	Name in ISE
<input type="checkbox"/>	AwsomenessLevel	STRING	100	AwsomenessLevel
<input type="checkbox"/>	UserType	STRING	admin	UserType

6.調整ISE規則：

Status	Rule Name	Conditions (identity groups and other conditions)	Permissions	
✓	Group1Access	if ISE_ODBC:ExternalGroups EQUALS ODBCGroup1	then PermitAccess	Edit ▾
✓	AwesomeUser	if ISE_ODBC:AwsomenessLevel EQUALS 100	then PermitAccess	Edit ▾
✓	Default	if no matches, then	DenyAccess	Edit ▾

Refresh Reset Repeat Counts Export To Filter

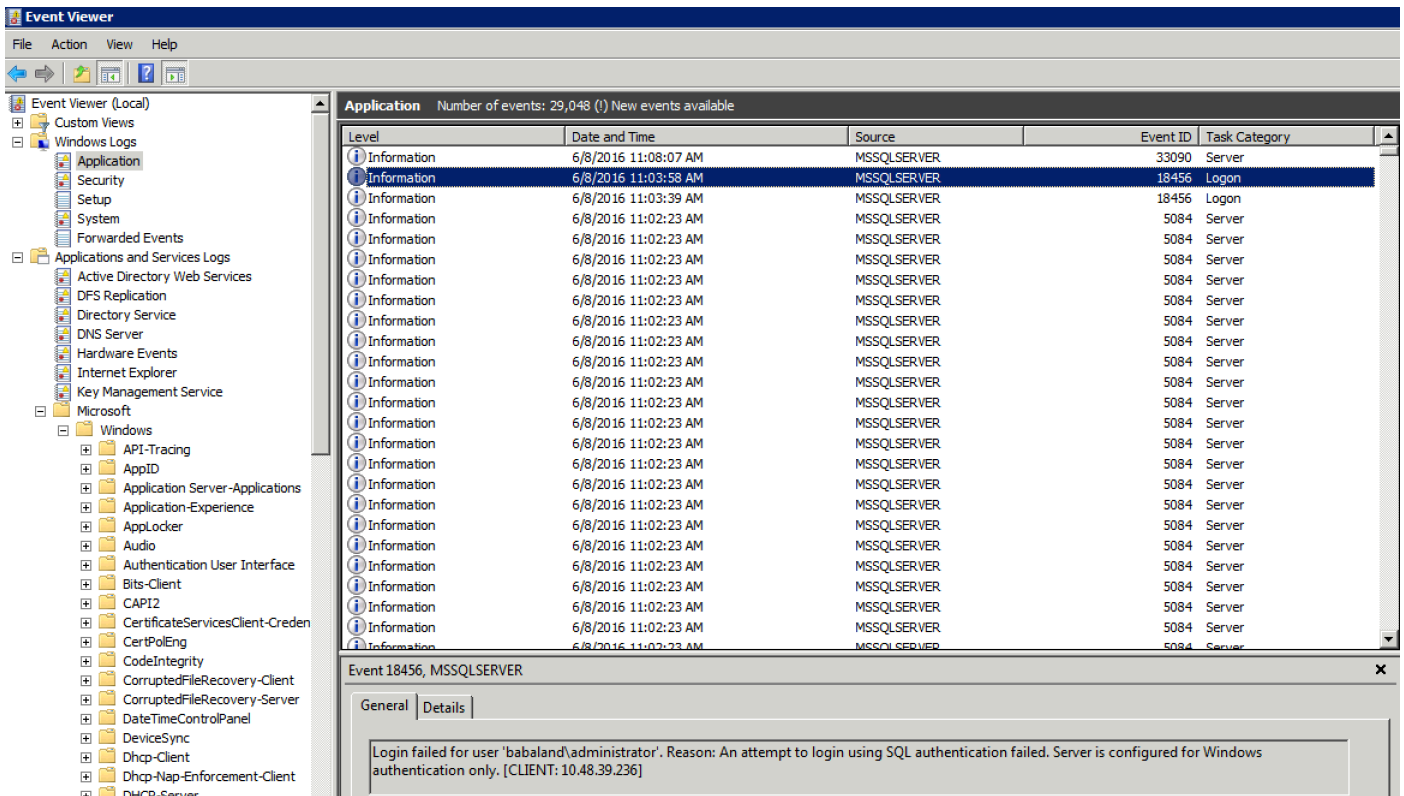
Time	Status	Details	Repeat ...	Identity	Endpoint ID	Endpoint Pr...	Authenticat...	Authorization Policy	Authorizatio...
Jun 08, 2016 12:21:45.596 PM	✓			Identity	Endpoint ID	Endpoint Prof	Authenticator	Authorization Policy	Authorization
				odbcuser2			TestAAA >> ...	TestAAA >> AwesomeUser	PermitAccess

疑難排解

如果連線不成功，請檢查windows事件日誌。在ISE上，嘗試連線時使用命令 `show logging application prrt-management.log tail`。

錯誤的身份驗證模式示例：

```
bise236/admin# sh logg app prrt-management.log tail
2016-06-08 09:03:59,822 WARN [admin-http-pool177][]
cisco.cpm.odbcidstore.impl.MSSQLServerDbAccess -:bastien::- Connection to ODBC DB failed.
Exception: com.microsoft.sqlserver.jdbc.S
QLServerException: Login failed for user 'babaland\administrator'. ClientConnectionId:c74ade15-
4f34-415a-9a94-4c54c58c0fc3
com.microsoft.sqlserver.jdbc.SQLServerException: Login failed for user 'babaland\administrator'.
ClientConnectionId:c74ade15-4f34-415a-9a94-4c54c58c0fc3
at
com.microsoft.sqlserver.jdbc.SQLServerException.makeFromDatabaseError(SQLServerException.java:21
6)
at com.microsoft.sqlserver.jdbc.TDSTokenHandler.onEOF(tdsparser.java:254)
at com.microsoft.sqlserver.jdbc.TDSParser.parse(tdsparser.java:84)
at com.microsoft.sqlserver.jdbc.SQLServerConnection.sendLogon(SQLServerConnection.java:2908)
at com.microsoft.sqlserver.jdbc.SQLServerConnection.logon(SQLServerConnection.java:2234)
at com.microsoft.sqlserver.jdbc.SQLServerConnection.access$000(SQLServerConnection.java:41)
at
com.microsoft.sqlserver.jdbc.SQLServerConnection$LogonCommand.doExecute(SQLServerConnection.java
:2220)
at com.microsoft.sqlserver.jdbc.TDSCommand.execute(IOBuffer.java:5696)
at
com.microsoft.sqlserver.jdbc.SQLServerConnection.executeCommand(SQLServerConnection.java:1715)
at com.microsoft.sqlserver.jdbc.SQLServerConnection.connectHelper(SQLServerConnection.java:1326)
```

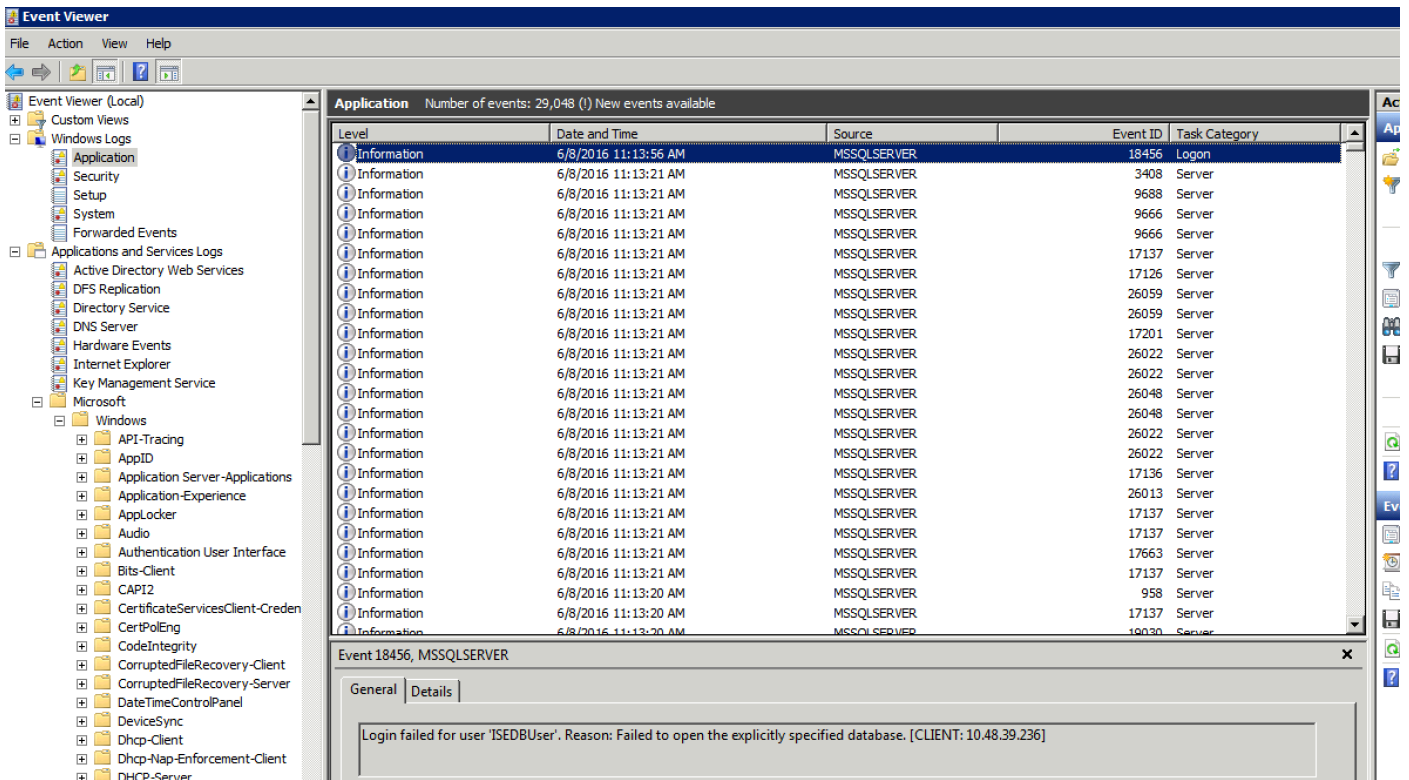


使用者缺少開啟資料庫的許可權的示例：

```

2016-06-08 09:13:57,842 WARN [admin-http-pool159][
cisco.cpm.odbcidstore.impl.MSSQLServerDbAccess -:bastien::- Connection to ODBC DB failed.
Exception: com.microsoft.sqlserver.jdbc.SQLServerException: Cannot open database "ISEDB"
requested by the login. The login failed. ClientConnectionId:299c2956-6946-4282-b3ca-
2aa86642a821
com.microsoft.sqlserver.jdbc.SQLServerException: Cannot open database "ISEDB" requested by the
login. The login failed. ClientConnectionId:299c2956-6946-4282-b3ca-2aa86642a821
at
com.microsoft.sqlserver.jdbc.SQLServerException.makeFromDatabaseError(SQLServerException.java:21
6)
at com.microsoft.sqlserver.jdbc.TDSTokenHandler.onEOF(tdsparser.java:254)
at com.microsoft.sqlserver.jdbc.TDSParser.parse(tdsparser.java:84)
at com.microsoft.sqlserver.jdbc.SQLServerConnection.sendLogon(SQLServerConnection.java:2908)
at com.microsoft.sqlserver.jdbc.SQLServerConnection.logon(SQLServerConnection.java:2234)
at com.microsoft.sqlserver.jdbc.SQLServerConnection.access$000(SQLServerConnection.java:41)

```



為了對DB操作進行故障排除，請在**管理>系統>日誌記錄>調試日誌配置**下啟用日誌記錄元件**odbc-id-store**到**DEBUG**級別。

日誌放在**prrt-management.log**檔案中。

odbcuser2示例：

```

2016-06-08 12:26:56,009 DEBUG [Thread-4051][] cisco.cpm.odbcidstore.impl.OdbcIdStore -:::- ODBC
ID Store Operation: Authenticate Plain Text Password. Username=odbcuser2,
SessionID=0a3027ecLA_rJLKsS5QazuRvluGWzdYe67rIgcG3MMQcpE8yKnw
2016-06-08 12:26:56,012 DEBUG [Thread-4051][] cisco.cpm.odbcidstore.impl.CustomerLog -:::- Write
customer log message: 24852
2016-06-08 12:26:56,012 DEBUG [Thread-4051][] cisco.cpm.odbcidstore.impl.OdbcConnectionPool -
:::- OdbcConnectionPool - get connection
2016-06-08 12:26:56,012 DEBUG [Thread-4051][] cisco.cpm.odbcidstore.impl.OdbcConnectionPool -
:::- OdbcConnectionPool - use existing connection
2016-06-08 12:26:56,013 DEBUG [Thread-4051][] cisco.cpm.odbcidstore.impl.OdbcConnectionPool -
:::- OdbcConnectionPool - connections in use: 1
2016-06-08 12:26:56,013 DEBUG [Thread-4051][] cisco.cpm.odbcidstore.impl.OdbcConnection -:::-
Authenticate plain text password
2016-06-08 12:26:56,013 DEBUG [Thread-4051][] cisco.cpm.odbcidstore.impl.OdbcConnection -:::-
Prepare stored procedure call, procname=ISEAuthUserPlainReturnsRecordset
2016-06-08 12:26:56,013 DEBUG [Thread-4051][] cisco.cpm.odbcidstore.impl.OdbcConnection -:::-
Using recordset to obtain stored procedure result values
2016-06-08 12:26:56,013 DEBUG [Thread-4051][] cisco.cpm.odbcidstore.impl.CustomerLog -:::- Write
customer log message: 24855
2016-06-08 12:26:56,013 DEBUG [Thread-4051][] cisco.cpm.odbcidstore.impl.OdbcConnection -:::-
Text: {call ISEAuthUserPlainReturnsRecordset(?, ?)}
2016-06-08 12:26:56,013 DEBUG [Thread-4051][] cisco.cpm.odbcidstore.impl.OdbcConnection -:::-
Setup stored procedure input parameters, username=odbcuser2, password=***
2016-06-08 12:26:56,014 DEBUG [Thread-4051][] cisco.cpm.odbcidstore.impl.OdbcConnection -:::-
Execute stored procedure call
2016-06-08 12:26:56,017 DEBUG [Thread-4051][] cisco.cpm.odbcidstore.impl.OdbcConnection -:::-

```

Process stored procedure results

```
2016-06-08 12:26:56,017 DEBUG [Thread-4051][] cisco.cpm.odbcidstore.impl.OdbcConnection -:::-
Obtain stored procedure results from recordset
2016-06-08 12:26:56,017 DEBUG [Thread-4051][] cisco.cpm.odbcidstore.impl.OdbcConnection -:::-
Received result recordset, number of columns=4
2016-06-08 12:26:56,017 DEBUG [Thread-4051][] cisco.cpm.odbcidstore.impl.OdbcConnection -:::-
Results successfully parsed from recordset
2016-06-08 12:26:56,018 DEBUG [Thread-4051][] cisco.cpm.odbcidstore.impl.OdbcConnectionPool -
:::- OdbcConnectionPool - release connection
2016-06-08 12:26:56,018 DEBUG [Thread-4051][] cisco.cpm.odbcidstore.impl.OdbcConnectionPool -
:::- OdbcConnectionPool - connections in use: 0
2016-06-08 12:26:56,018 DEBUG [Thread-4051][] cisco.cpm.odbcidstore.impl.OdbcIdStore -:::- Call
to ODBC DB succeeded
2016-06-08 12:26:56,018 DEBUG [Thread-4051][] cisco.cpm.odbcidstore.impl.OdbcAuthResult -:::-
Authentication result: code=0, Connection succeeded=false, odbcDbErrorString=No Error,
odbcStoredProcedureCustomerErrorString=null, accountInfo=This is a very good user, give him all
access, group=11
2016-06-08 12:26:56,019 DEBUG [Thread-4051][] cisco.cpm.odbcidstore.impl.CustomerLog -:::- Write
customer log message: 24853
2016-06-08 12:26:56,026 DEBUG [Thread-84][] cisco.cpm.odbcidstore.impl.OdbcIdStore -:::- ODBC ID
Store Operation: Get all user groups. Username=odbcuser2,
SessionID=0a3027ecLA_rJLKsS5QAzurVluGWzdYe67rIgcG3MMQcpE8yKnw
2016-06-08 12:26:56,029 DEBUG [Thread-84][] cisco.cpm.odbcidstore.impl.OdbcIdStore -:::- ODBC ID
Store Operation: Fetch user groups. Username=odbcuser2,
SessionID=0a3027ecLA_rJLKsS5QAzurVluGWzdYe67rIgcG3MMQcpE8yKnw
2016-06-08 12:26:56,029 DEBUG [Thread-84][] cisco.cpm.odbcidstore.impl.CustomerLog -:::- Write
customer log message: 24869
2016-06-08 12:26:56,029 DEBUG [Thread-84][] cisco.cpm.odbcidstore.impl.OdbcConnectionPool -:::-
OdbcConnectionPool - get connection
2016-06-08 12:26:56,029 DEBUG [Thread-84][] cisco.cpm.odbcidstore.impl.OdbcConnectionPool -:::-
OdbcConnectionPool - use existing connection
2016-06-08 12:26:56,029 DEBUG [Thread-84][] cisco.cpm.odbcidstore.impl.OdbcConnectionPool -:::-
OdbcConnectionPool - connections in use: 1
2016-06-08 12:26:56,029 DEBUG [Thread-84][] cisco.cpm.odbcidstore.impl.OdbcConnection -:::-
Fetch user groups
2016-06-08 12:26:56,029 DEBUG [Thread-84][] cisco.cpm.odbcidstore.impl.OdbcConnection -:::-
Prepare stored procedure call, procname=ISEGroupsRetrieval
2016-06-08 12:26:56,029 DEBUG [Thread-84][] cisco.cpm.odbcidstore.impl.OdbcConnection -:::-
Text: {call ISEGroupsRetrieval(?,?) }
2016-06-08 12:26:56,029 DEBUG [Thread-84][] cisco.cpm.odbcidstore.impl.OdbcConnection -:::-
Setup stored procedure input parameters, username=odbcuser2
2016-06-08 12:26:56,029 DEBUG [Thread-84][] cisco.cpm.odbcidstore.impl.OdbcConnection -:::-
Execute stored procedure call
2016-06-08 12:26:56,031 DEBUG [Thread-84][] cisco.cpm.odbcidstore.impl.OdbcConnection -:::-
Process stored procedure results
2016-06-08 12:26:56,032 DEBUG [Thread-84][] cisco.cpm.odbcidstore.impl.OdbcConnection -:::-
Received empty result set, no groups/attributes data can be obtained
2016-06-08 12:26:56,032 DEBUG [Thread-84][] cisco.cpm.odbcidstore.impl.OdbcConnection -:::-
Result code indicates success
2016-06-08 12:26:56,033 DEBUG [Thread-84][] cisco.cpm.odbcidstore.impl.OdbcConnectionPool -:::-
OdbcConnectionPool - release connection
2016-06-08 12:26:56,033 DEBUG [Thread-84][] cisco.cpm.odbcidstore.impl.OdbcConnectionPool -:::-
OdbcConnectionPool - connections in use: 0
2016-06-08 12:26:56,033 DEBUG [Thread-84][] cisco.cpm.odbcidstore.impl.OdbcIdStore -:::- Call to
ODBC DB succeeded
2016-06-08 12:26:56,033 DEBUG [Thread-84][] cisco.cpm.odbcidstore.impl.CustomerLog -:::- Write
customer log message: 24870
2016-06-08 12:26:56,033 DEBUG [Thread-84][] cisco.cpm.odbcidstore.impl.OdbcIdStore -:::- ODBC ID
Store Operation: Get all user groups. Got groups...
2016-06-08 12:26:56,033 DEBUG [Thread-84][] cisco.cpm.odbcidstore.impl.OdbcIdStore -:::- ODBC ID
Store Operation: Get all user groups. Username=odbcuser2, ExternalGroups=[]
2016-06-08 12:26:56,033 DEBUG [Thread-84][] cisco.cpm.odbcidstore.impl.OdbcIdStore -:::- ODBC ID
Store Operation: Fetch user attributes. Username=odbcuser2,
SessionID=0a3027ecLA_rJLKsS5QAzurVluGWzdYe67rIgcG3MMQcpE8yKnw
```

```
2016-06-08 12:26:56,033 DEBUG [Thread-84][] cisco.cpm.odbcidstore.impl.CustomerLog -:::- Write
customer log message: 24872
2016-06-08 12:26:56,033 DEBUG [Thread-84][] cisco.cpm.odbcidstore.impl.OdbcConnectionPool -:::-
OdbcConnectionPool - get connection
2016-06-08 12:26:56,033 DEBUG [Thread-84][] cisco.cpm.odbcidstore.impl.OdbcConnectionPool -:::-
OdbcConnectionPool - use existing connection
2016-06-08 12:26:56,033 DEBUG [Thread-84][] cisco.cpm.odbcidstore.impl.OdbcConnectionPool -:::-
OdbcConnectionPool - connections in use: 1
2016-06-08 12:26:56,033 DEBUG [Thread-84][] cisco.cpm.odbcidstore.impl.OdbcConnection -:::-
Fetch user attributes
2016-06-08 12:26:56,033 DEBUG [Thread-84][] cisco.cpm.odbcidstore.impl.OdbcConnection -:::-
Prepare stored procedure call, procname=ISEAttrsRetrieval
2016-06-08 12:26:56,033 DEBUG [Thread-84][] cisco.cpm.odbcidstore.impl.OdbcConnection -:::-
Text: {call ISEAttrsRetrieval(?,?)}
2016-06-08 12:26:56,033 DEBUG [Thread-84][] cisco.cpm.odbcidstore.impl.OdbcConnection -:::-
Setup stored procedure input parameters, username=odbcuser2
2016-06-08 12:26:56,033 DEBUG [Thread-84][] cisco.cpm.odbcidstore.impl.OdbcConnection -:::-
Execute stored procedure call
2016-06-08 12:26:56,035 DEBUG [Thread-84][] cisco.cpm.odbcidstore.impl.OdbcConnection -:::-
Process stored procedure results
2016-06-08 12:26:56,035 DEBUG [Thread-84][] cisco.cpm.odbcidstore.impl.OdbcConnection -:::-
Received result recordset, total number of columns=2
2016-06-08 12:26:56,035 DEBUG [Thread-84][] cisco.cpm.odbcidstore.impl.OdbcConnection -:::-
According to column number expect multiple rows (vertical attributes/groups returned result)
2016-06-08 12:26:56,035 DEBUG [Thread-84][] cisco.cpm.odbcidstore.impl.OdbcConnection -:::-
Fetched data: AwsomenessLevel=100
2016-06-08 12:26:56,035 DEBUG [Thread-84][] cisco.cpm.odbcidstore.impl.OdbcConnection -:::-
Fetched data: UserType=admin
2016-06-08 12:26:56,035 DEBUG [Thread-84][] cisco.cpm.odbcidstore.impl.OdbcConnection -:::-
Results successfully parsed from recordset
2016-06-08 12:26:56,035 DEBUG [Thread-84][] cisco.cpm.odbcidstore.impl.OdbcConnection -:::-
Result code indicates success
2016-06-08 12:26:56,036 DEBUG [Thread-84][] cisco.cpm.odbcidstore.impl.OdbcConnectionPool -:::-
OdbcConnectionPool - release connection
2016-06-08 12:26:56,036 DEBUG [Thread-84][] cisco.cpm.odbcidstore.impl.OdbcConnectionPool -:::-
OdbcConnectionPool - connections in use: 0
2016-06-08 12:26:56,036 DEBUG [Thread-84][] cisco.cpm.odbcidstore.impl.OdbcIdStore -:::- Call to
ODBC DB succeeded
2016-06-08 12:26:56,036 DEBUG [Thread-84][] cisco.cpm.odbcidstore.impl.CustomerLog -:::- Write
customer log message: 24873
2016-06-08 12:26:56,036 DEBUG [Thread-84][] cisco.cpm.odbcidstore.impl.OdbcIdStore -:::- ODBC ID
Store Operation: Get all user attrs. Username=odbcuser2, Setting ISE_ODBC.AwsomenessLevel to 100
2016-06-08 12:26:56,036 DEBUG [Thread-84][] cisco.cpm.odbcidstore.impl.OdbcIdStore -:::- ODBC ID
Store Operation: Get all user attrs. Username=odbcuser2, Setting ISE_ODBC.UserType to admin
```