

硬插线环回测试

Contents

[Introduction](#)

[Prerequisites](#)

[Requirements](#)

[Components Used](#)

[Conventions](#)

[流程图](#)

[Related Information](#)

[Introduction](#)

本文档提供了硬插线回送测试的流程图。

[Prerequisites](#)

[Requirements](#)

There are no specific requirements for this document.

[Components Used](#)

This document is not restricted to specific software and hardware versions.

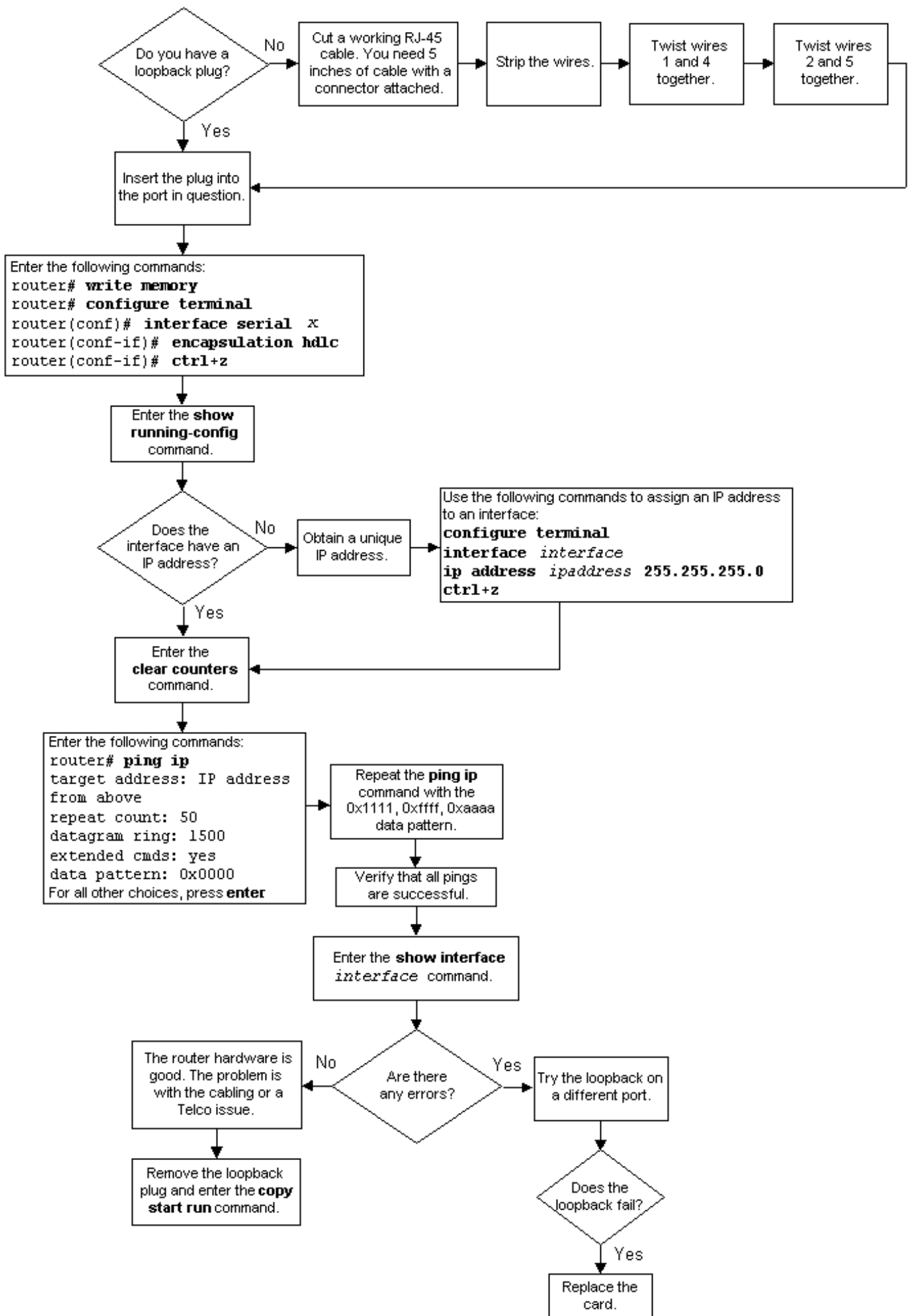
The information in this document was created from the devices in a specific lab environment. All of the devices used in this document started with a cleared (default) configuration. If your network is live, make sure that you understand the potential impact of any command.

[Conventions](#)

有关文档规则的详细信息，请参阅 [Cisco 技术提示规则](#)。

[流程图](#)

点击命令框在图表中欲知更多信息。



Related Information

- [T1 故障排除](#)
- [T1 第一层故障排除](#)
- [T1 警报故障排除](#)
- [T1 错误事件故障排除](#)
- [T1 PRI 故障排除](#)