

蓝色与黄色 T1 警报故障排除

Contents

[Introduction](#)

[Prerequisites](#)

[Requirements](#)

[Components Used](#)

[Conventions](#)

[背景信息](#)

[Related Information](#)

[Introduction](#)

本文提供关于如何故障排除蓝色和黄色T1报警的相关信息。

[Prerequisites](#)

[Requirements](#)

There are no specific requirements for this document.

[Components Used](#)

This document is not restricted to specific software and hardware versions.

The information in this document was created from the devices in a specific lab environment. All of the devices used in this document started with a cleared (default) configuration. If your network is live, make sure that you understand the potential impact of any command.

[Conventions](#)

Refer to [Cisco Technical Tips Conventions](#) for more information on document conventions.

[背景信息](#)

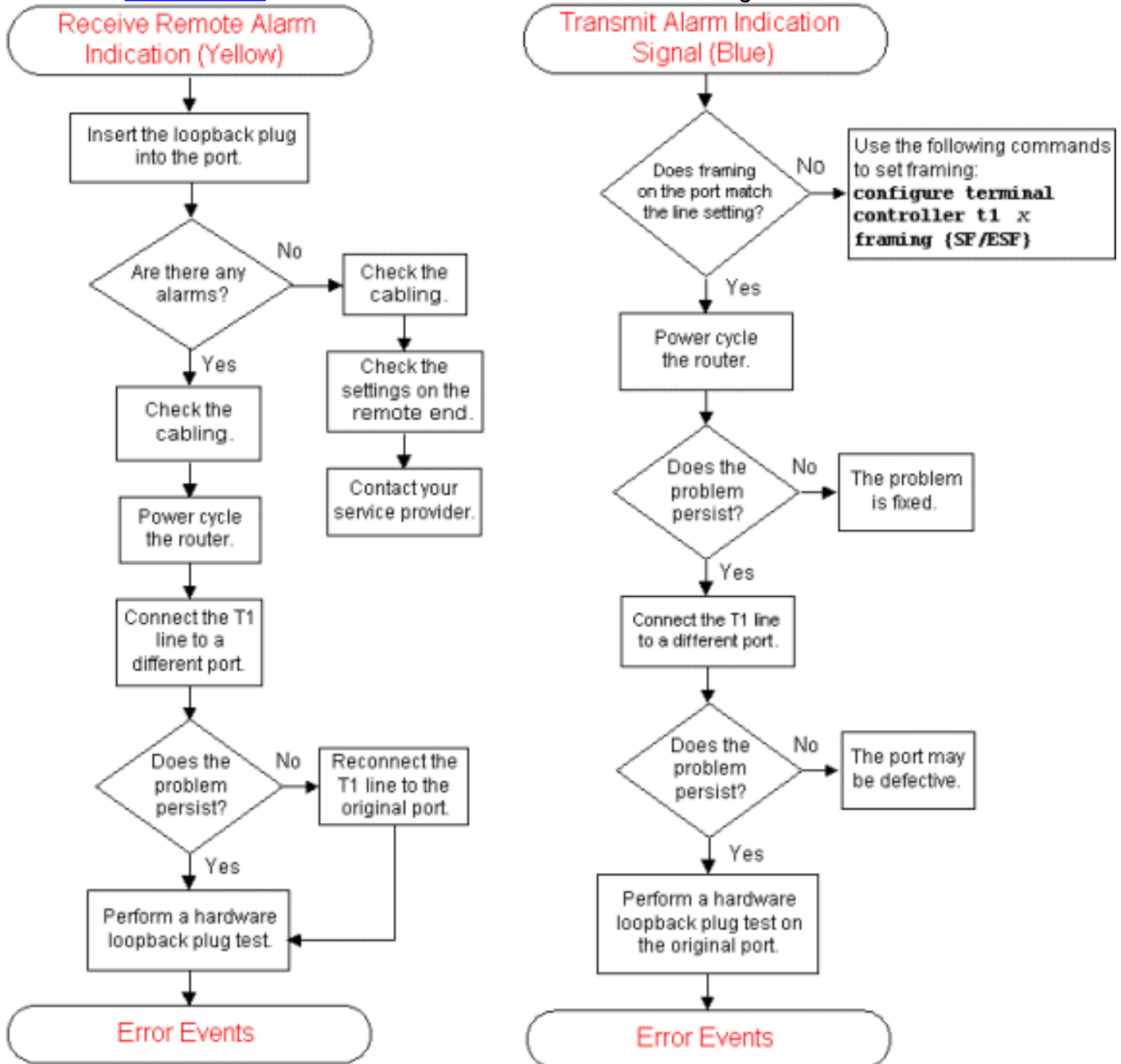
关于接收远程告警指示（黄色）图表的更多信息，请点击对应链接到图形中的命令框：

- 方框 [Insert the loopback plug into the port](#) 链接到 Hard Plug Loopback Test.
- 方框 [Check the cabling](#) 链接到 T1 Alarm Troubleshooting.
- 方框 [Power cycle the router](#) 链接到 T1 Alarm Troubleshooting.
- 方框 [Connect the T1 line to a different port](#) 链接到 T1 Alarm Troubleshooting.

- 方框 [Perform a hardware loopback plug test](#) 链接到 the Hard Plug Loopback Test.
- 方框. [Error Events](#) 链接到 the T1 Error Event Troubleshooting Flowchart.

关于接收远程告警指示（蓝色）图表的更多信息，请点击对应链接到图形中的命令框：

- 方框 [Configure terminal controller t1 x framing {SF/ESF}](#) 链接到 T1 Alarm Troubleshooting.
- 方框 [Connect the T1 to a different port](#) 链接到 T1 Alarm Troubleshooting.
- 方框 [Perform a hardware loopback plug test on the original port](#) 链接到 the Hard Plug Loopback Test.
- 方框. [Error Events](#) 链接到 the T1 Error Event Troubleshooting Flowchart.



[Related Information](#)

- [T1 警报故障排除](#)
- [硬插线环回测试](#)
- [T1错误事件故障排除流程图](#)