

将VMware ESXi从5.5版升级到6.x脱机捆绑包。

目录

- [简介](#)
- [先决条件](#)
- [要求](#)
- [使用的组件](#)
- [背景信息](#)
- [配置](#)
- [通过CLI升级过程](#)
- [验证](#)

简介

本文档介绍如何通过离线捆绑包从5.5升级到6.X，而不是通过命令行。

先决条件

要求

Cisco 建议您了解以下主题：

- 运行 VMware ESXi 虚拟机监控程序版本 5.5 的统一计算系统 (UCS)
- 对 ESXi 虚拟机监控程序进行终端访问
- 使用支持 Java 的浏览器访问思科集成管理控制器 (CIMC) 网页

使用的组件

本文档中的信息基于以下软件和硬件版本：

- 统一计算系统(UCS C240 M4SX)或BE7H。
- ESXi 虚拟机监控程序版本 5.5.
- Firefox 浏览器.

本文档中的信息都是基于特定实验室环境中的设备编写的。本文档中使用的所有设备最初均采用原始（默认）配置。如果您使用的是真实网络，请确保您已经了解所有命令的潜在影响。

背景信息

VMware 已发布了 ESXi 5.5 的一般支持终止日期和技术指导终止日期：

ESXi 5.5	.	2013/09/19	2018/09/19	2020/09/19	EP	A, B
----------	---	------------	------------	------------	----	------

因此，将虚拟化基础设施升级到 ESXi 6.0 和 6.5 不失为一个好做法。

配置

步骤1.通过以下链接下载脱机捆绑包 (.zip文件) :

<https://my.vmware.com/group/vmware/details?productId=491&downloadGroup=OEM-ESXI60U1B-CISCO>

File	Information
CISCO Custom Image for ESXi 6.0 U1b GA Install CD	Download Now Download Manager
File size: 352.40 MB File type: iso Read More	
CISCO Custom Image for ESXi 6.0 U1b GA Install CD	Download Now Download Manager
File size: 342.47 MB File type: zip Read More	

步骤2.下载文件后，浏览Datastore并将文件从本地PC上传到Datastore，如图所示。

Storage	Drive Type	Capacity
datastore1	Non-SSD	1.08 TB
datastore3	Non-SSD	1.09 TB
datastore4	Non-SSD	1.09 TB
divyapcd_NFS(r...	Unknown	N/A
pcd_NFS (read on...	Unknown	N/A
pcd11_NFS (read...	Unknown	N/A
ucm06bcpcd10_...	Unknown	N/A

步骤3.此处使用datastore1上传文件。

Datastore Browser - [datastore1]

Name	Size	Type	Path
.sdd.sf		Folder	[datastore1].sdd.sf
AFG		Folder	[datastore1] AFG
OVA-ISO		Folder	[datastore1] OVA-ISO
ucm06bcsub4-ucs		Folder	[datastore1] ucm06bcsub4-ucs
cum1052		Folder	[datastore1] cum1052
AD		Folder	[datastore1] AD
CUCM		Folder	[datastore1] CUCM
Cisco Prime Collaboration De		Folder	[datastore1] Cisco Prime Collaborati...
Cisco Unified Communication		Folder	[datastore1] Cisco Unified Communi...
cum1051		Folder	[datastore1] cum1051
Singlewire InformaCast		Folder	[datastore1] Singlewire InformaCast
CUCMNEWP		Folder	[datastore1] CUCMNEWP
Cisco Unified Communication		Folder	[datastore1] Cisco Unified Communi...
CUCM115x		Folder	[datastore1] CUCM115x
CUCMPub11x		Folder	[datastore1] CUCMPub11x
CUCM5x11x		Folder	[datastore1] CUCM5x11x

Uploading...
C:\Users\sakaleka\Downloads\Vmware-ESXi-6.0.0-3380124-Custom-Cisco-6.0.1.3-Bundle.zip
From
C:\Users\sakaleka\Downloads\Vmware-ESXi-6.0.0-3380124-Custom-Cisco-6.0.1.3-Bundle.zip to [datastore1]
Vmware-ESXi-6.0.0-3380124-Custom-Cisco-6.0.1.3-Bundle.zip
0 minute(s) and 44 second(s) remaining
Cancel

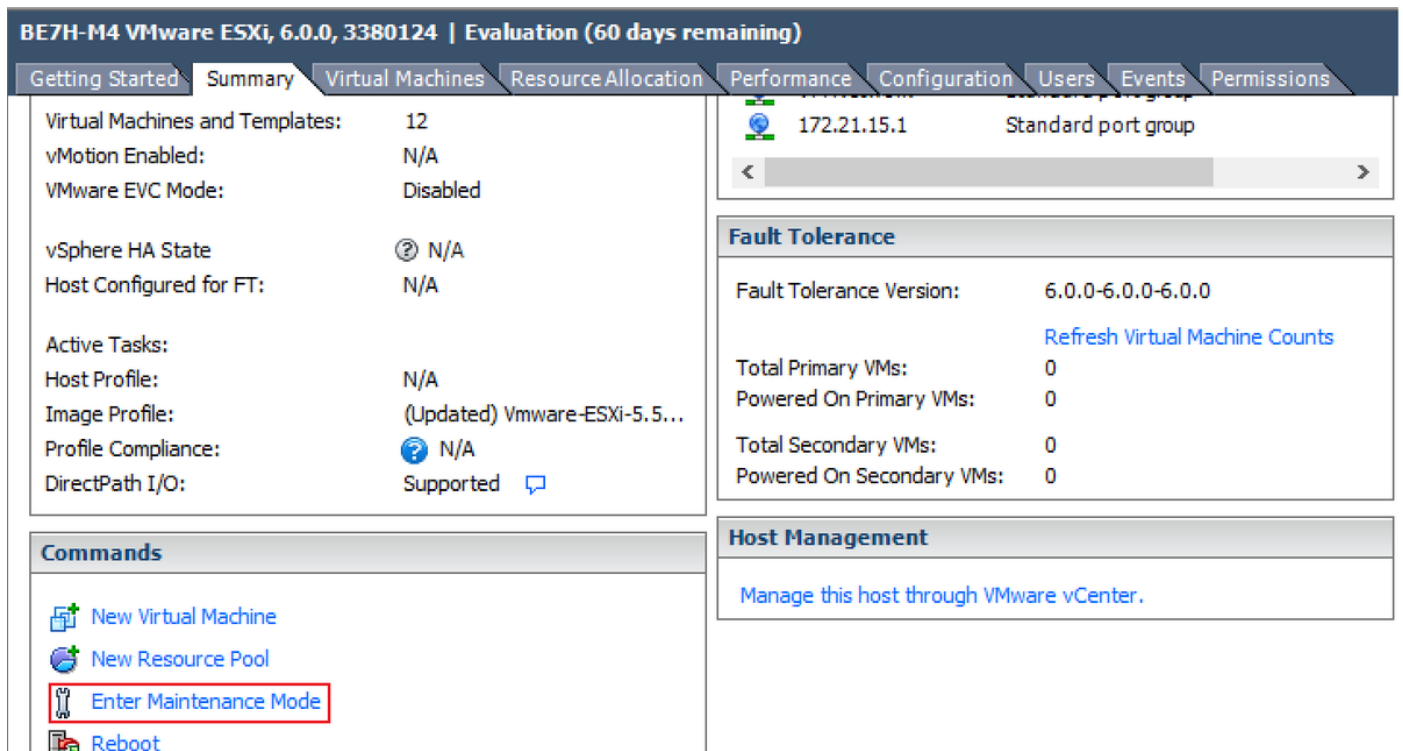
步骤4.从Datastore复制文件名，并记录上传文件的Datastore。

文件名- Vmware-ESXi-6.0.0-3380124-Custom-Cisco-6.0.1.3-Bundle.zip

通过CLI升级过程

1. 关闭在要升级的ESXi服务器上运行的虚拟机(VM)。
2. 将ESXi服务器置于维护模式。这可以关闭虚拟机监控程序运行的所有关键服务，使服务器能够执行升级。

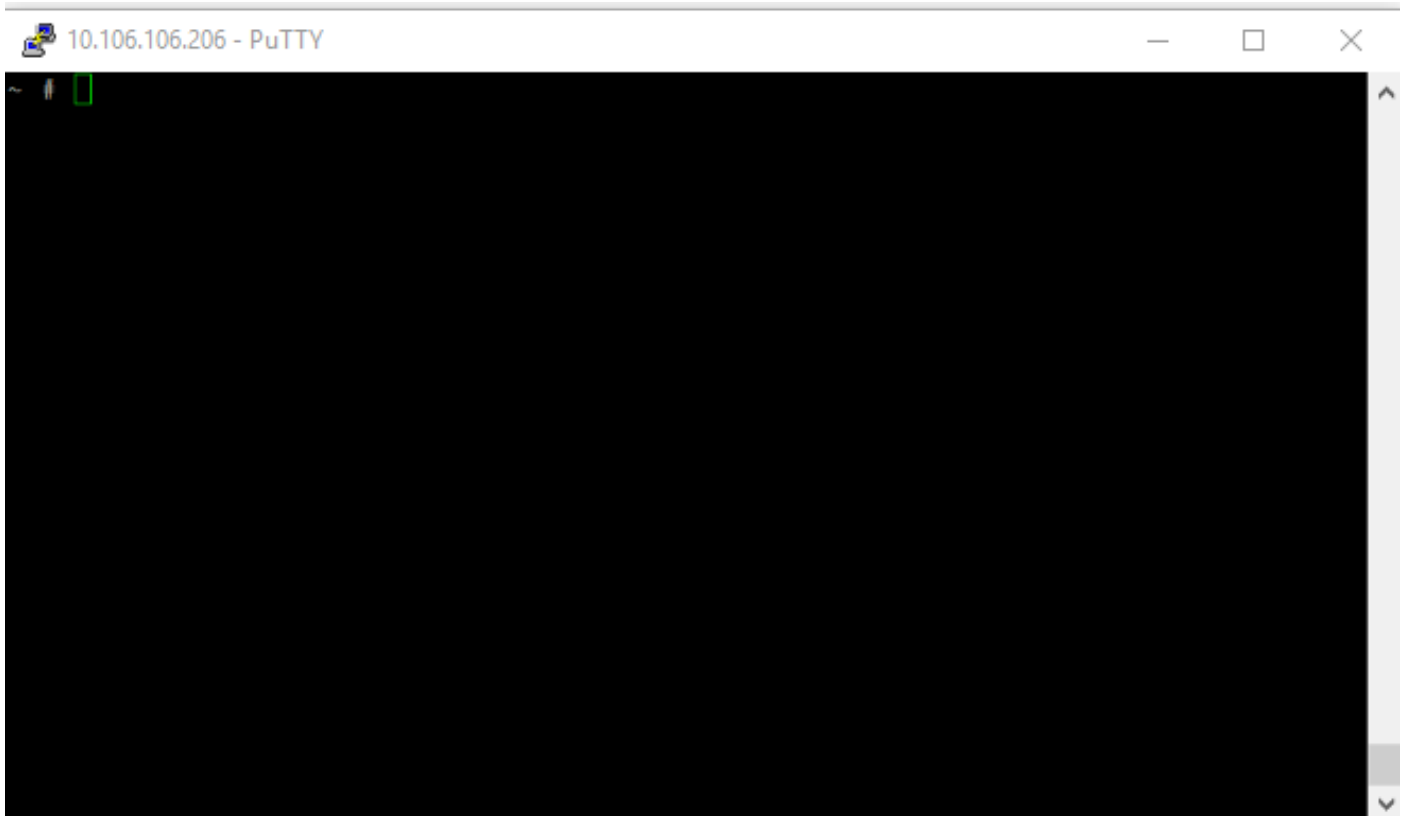
步骤1.您可以使用vSphere客户端，如图所示。



The screenshot displays the vSphere Client interface for an ESXi host. The top navigation bar shows the host name and version: "BE7H-M4 VMware ESXi, 6.0.0, 3380124 | Evaluation (60 days remaining)". The main content area is divided into several sections:

- Summary:** Displays host configuration details such as "Virtual Machines and Templates: 12", "vMotion Enabled: N/A", and "VMware EVC Mode: Disabled".
- Configuration:** Shows network settings like "172.21.15.1" and "Standard port group".
- Fault Tolerance:** Displays "Fault Tolerance Version: 6.0.0-6.0.0-6.0.0" and VM counts.
- Host Management:** Includes a link to "Manage this host through VMware vCenter".
- Commands:** A list of actions is shown, with "Enter Maintenance Mode" highlighted by a red rectangular box.

步骤2.现在访问Esxi节点的CLI。



步骤3.从CLI运行以下命令：

esxcli软件vib更新 — d /vmfs/volumes/<Datastore name>/<文件名>

示例：

esxcli软件vib更新 — d /vmfs/volumes/datastore1/vmware-ESXi-6.0.0-3380124-Custom-Cisco-6.0.1.3-Bundle.zip

```
~ # esxcli software vib update -d /vmfs/volumes/datastore1/Vmware-ESXi-6.0.0-3380124-Custom-Cisco-6.0.1.3-Bundle.zip
```

Installation Result

Message: The update completed successfully, but the system needs to be rebooted for the changes to be effective.

Reboot Required: true

VIBs Installed: Adaptec_Inc_bootbank_scsi-aacraid_6.0.6.2.1.52011-10EM.600.0.0.2494585, Avago_bootbank_lsi-mr3_6.610.19.00-10EM.600.0.0.2768847, Avago_bootbank_lsi-msgpt3_14.00.03.00-10EM.600.0.0.2768847, CSCO_bootbank_net-enic_2.3.0.10-10EM.600.0.0.2494585, CSCO_bootbank_scsi-fnic_1.6.0.33-10EM.600.0.0.2494585, CSCO_bootbank_scsi-snic_0.0.1.26-10EM.600.0.0.2494585, VMWARE_bootbank_mtip32xx-native_3.8.5-1vmw.600.0.0.2494585, VMware_bootbank_ata-pata-amd_0.3.10-3vmw.600.0.0.2494585, VMware_bootbank_ata-pata-atiixp_0.4.6-4vmw.600.0.0.2494585, VMware_bootbank_ata-pata-cmd64x_0.2.5-3vmw.600.0.0.2494585, VMware_bootbank_ata-pata-hpt3x2n_0.3.4-3vmw.600.0.0.2494585, VMware_bootbank_ata-pata-pdc2027x_1.0-3vmw.600.0.

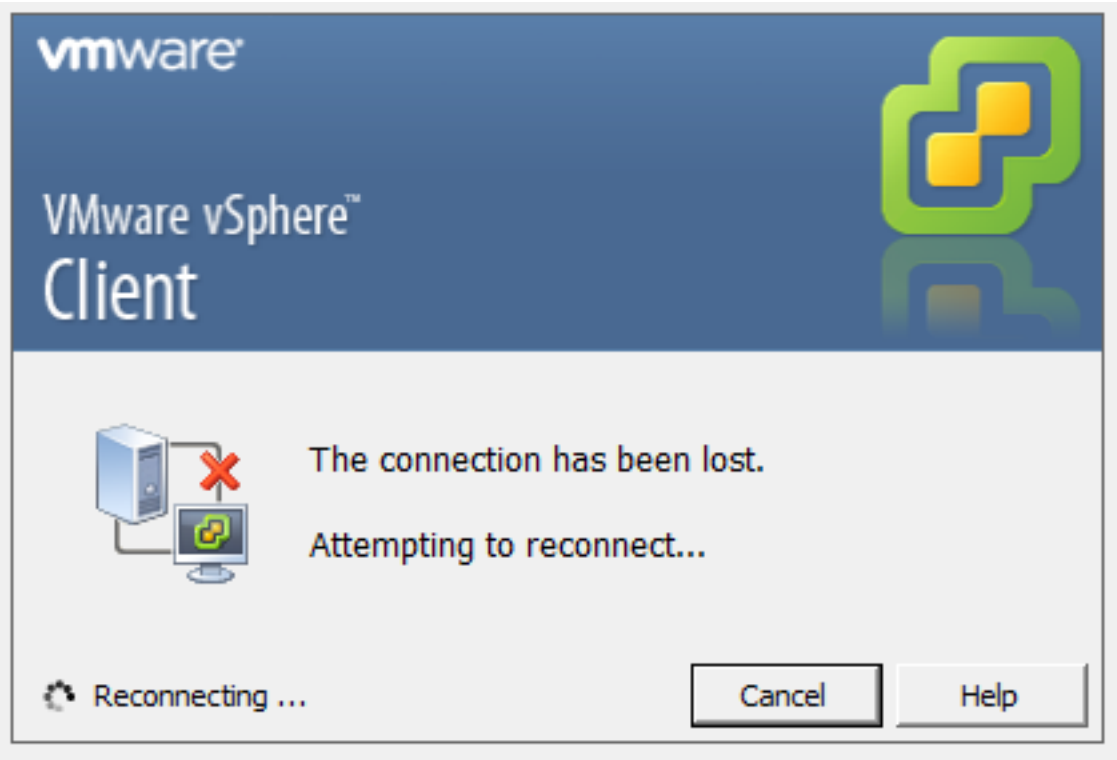
步骤4.成功升级文件后，Esxi CLI上的显示会显示在图像中。

```
~ # esxcli software vib update -d /vmfs/volumes/datastore1/Vmware-ESXi-6.0.0-3380124-Custom-Cisco-6.0.1.3-Bundle.zip
Installation Result
  Message: The update completed successfully, but the system needs to be rebooted for the changes to be effective.
  Reboot Required: true
  VIBs Installed: Adaptec_Inc_bootbank_scsi-aacraid_6.0.6.2.1.52011-1OEM.600.0.0.2494585, Avago_bootbank_lsi-mr3_6.610.19.00-1OEM.600.0.0.2768847, Avago_bootbank_lsi-msgpt3_14.00.03.00-1OEM.600.0.0.2768847, CSCO_bootbank_net-enic_2.3.0.10-1OEM.600.0.0.2494585, CSCO_bootbank_scsi-fnic_1.6.0.33-1OEM.600.0.0.2494585, CSCO_bootbank_scsi-snic_0.0.1.26-1OEM.600.0.0.2494585, VMWARE_bootbank_mtip32xx-native_3.8.5-1vmw.600.0.0.2494585, VMware_bootbank_ata-pata-amd_0.3.10-3vmw.600.0.0.2494585, VMware_bootbank_ata-pata-atiixp_0.4.6-4vmw.600.0.0.2494585, VMware_bootbank_ata-pata-cmd64x_0.2.5-3vmw.600.0.0.2494585, VMware_bootbank_ata-pata-hpt3x2n_0.3.4-3vmw.600.0.0.2494585, VMware_bootbank_ata-pata-pdc2027x_1.0-3vmw.600.0.0.2494585, VMware_bootbank_ata-pata-serverworks_0.4.3-3vmw.600.0.0.2494585, VMware_bootbank_ata-pata-sil680_0.4.8-3vmw.600.0.0.2494585, VMware_bootbank_ata-pata-via_0.3.3-2vmw.600.0.0.2494585, VMware_bootbank_block-cciss_3.6.14-10vmw.600.0.0.2494585, VMware_bootbank_ehci-ehci-hcd_1.0-3vmw.600.1.26.3380124, VMware_bootbank_elxnet_10.2.309.6v-1vmw.600.0.0.2494585, VMware_bootbank_esx-base_6.0.0-1.26.3380124, VMware_bootbank_esx-dvfilter-generic-fastpath_6.0.0-0.0.2494585, VMware_bootbank_esx-tboot_6.0.0-0.0.2494585, VMware_bootbank_esx-xserver_6.0.0-0.0.2494585, VMware_bootbank_ipmi-ipmi-devintf_39.1-4vmw.600.0.0.2494585, VMware_bootbank_ipmi-ipmi-msghandler_39.1-4vmw.600.0.0.2494585, VMware_bootbank_ipmi-ipmi-si-drv_39.1-4vmw.600.0.0.2494585, VMware_bootbank_lpfc_10.2.309.8-2vmw.600.0.0.2494585, VMware_bootbank_misc-cnric-register_1.78.75.v60.7-1vmw.600.0.0.2494585, VMware_bootbank_misc-drivers_6.0.0-1.26.3380124, VMware_bootbank_net-bnx2_2.2.4f.v60.10-1vmw.600.0.0.2494585, VMware_bootbank_net-bnx2x_1.78.80.v60.12-1vmw.600.0.0.2494585, VMware_bootbank_net-cnric_1.78.76.v60.13-2vmw.600.0.0.2494585, VMware_bootbank_net-el000_8.0.3.1-5vmw.600.0.0.2494585, VMware_bootbank_net-forcedeth_0.61-2vmw.600.0.0.2494585, VMware_bootbank_net-mlx4-core_1.9.7.0-1vmw.600.0.0.2494585, VMware_bootbank_net-mlx4-en_1.9.7.0-1vmw.600.0.0.2494585, VMware_bootbank_net-nx-nic_5.0.621-5vmw.600.0.0.2494585, VMware_bootbank_net-tg3_3.131d.v60.4-2vmw.600.1.26.3380124, VMware_bootbank_net-vmxnet3_1.1.3.0-3vmw.600.0.0.2494585, VMware_bootbank_ohci-usb-ohci_1.0-3vmw.600.0.0.2494585, VMware_bootbank_rste_2.0.2.0088-4vmw.600.0.0.2494585, VMware_bootbank_sata-ahci_3.0-22vmw.600.1.17.3029758, VMware_bootbank_sata-ata-piix_2.12-10vmw.600.0.0.2494585, VMware_bootbank_sata-sata-nv_3.5-4vmw.600.0.0.2494585, VMware_bootbank_sata-sata-promise_2.12-3vmw.600.0.0.2494585, VMware_bootbank_sata-sata-sil24_1.1-1vmw.600.0.0.2494585, VMware_bootbank_sata-sata-sil_2.3-4vmw.600.0.0.2494585, VMware_bootbank_sata-sata-svw_
```

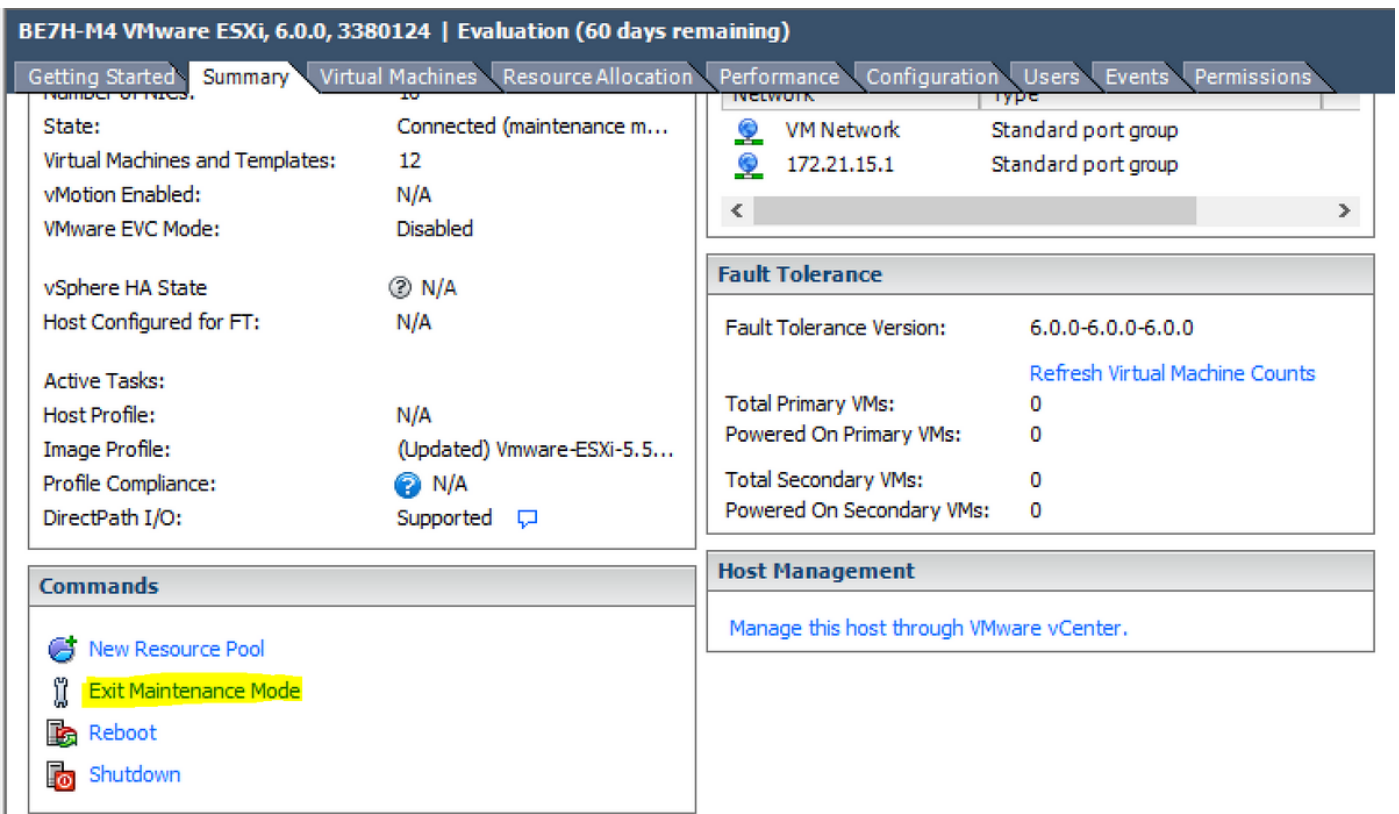
步骤5.重新启动服务器，如图所示。

```
~ # reboot
~ #
~ #
```

重新启动服务器后，Esxi客户端会在屏幕上显示此内容。



步骤6.退出维护模式：



也可以使用 CLI，执行此操作的命令为：

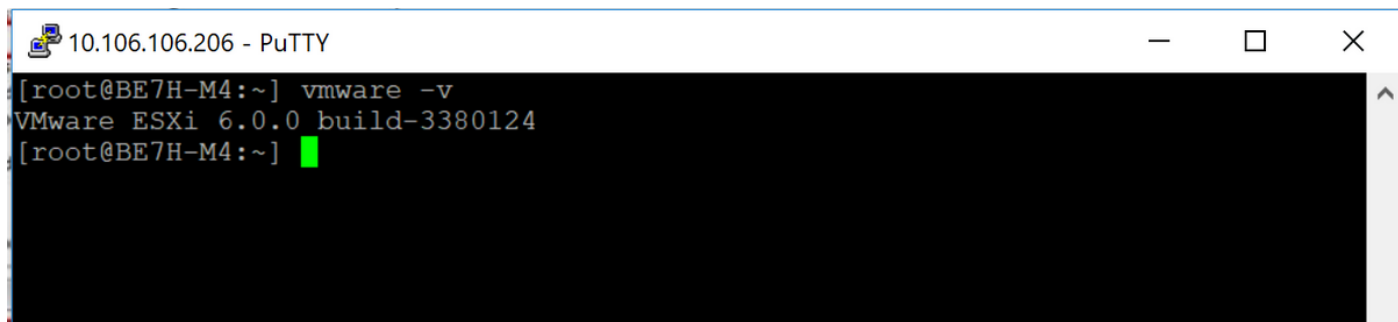
```
vim-cmd /hostsvc/maintenance_mode_exit
```

验证

使用本部分可确认配置能否正常运行。

要验证升级是否成功完成，可以使用 vSphere Client 执行检查。导航至 ESXi 主机，应该能够在顶部看到新版本号。也可以使用 CLI，执行此操作的命令为：

`vmware -v`



```
10.106.106.206 - PuTTY
[root@BE7H-M4:~] vmware -v
VMware ESXi 6.0.0 build-3380124
[root@BE7H-M4:~] █
```