

目录

[简介](#)

[先决条件](#)

[要求](#)

[使用的组件](#)

[背景信息](#)

[步骤](#)

[调节低水印](#)

[调节高水印](#)

[验证](#)

[故障排除](#)

简介

本文描述步骤通过调节在实时监控工具(RTMT)的高和低水印设置创建在Cisco Call Manager的记录日志分区的另外的磁盘空间。

[先决条件](#)

[要求](#)

本文档没有任何特定的要求。

使用的组件

本文档中的信息基于以下软件和硬件版本：

- Cisco Call Manager版本10.0.1-10000-24
- Cisco实时监控工具版本10.0(001)

本文档中的信息都是基于特定实验室环境中的设备编写的。本文档中使用的所有设备最初均采用原始（默认）配置。如果您使用的是真实网络，请确保您已经了解所有命令的潜在影响。

背景信息

低水印是总记录日志磁盘空间的百分比值，您收到警报的发表物，表明磁盘空间由配置的百分比是全双工低水印的。

高水印是总记录日志磁盘空间的百分比值，更旧的日志文件清除的发表物。

高指示使用的磁盘空间的百分比在记录日志分区的水印超出的和低水印Exceeded是事件。

LogPartitionHighWaterMarkExceeded

此事件表明使用的磁盘空间的百分比在日志分区的超出了已配置的高水位标记。

LogPartitionLowWaterMarkExceeded

此事件表明使用的磁盘空间的百分比在日志分区的超出了已配置的低水印。门限值百分比值这两个事件在根据需求的RTMT能配置。默认情况下高水印设置到95%总记录日志分区，并且低水印设置到90%总记录日志分区。

通常，需要出现，当有在记录日志分区的没有足够的空间，并且另外的空间需要为在CallManager的某一活动创建发生。在这样事件期间另外的空间在记录日志分区、调整阈值高水印和LowWaterMark能创建repectively。

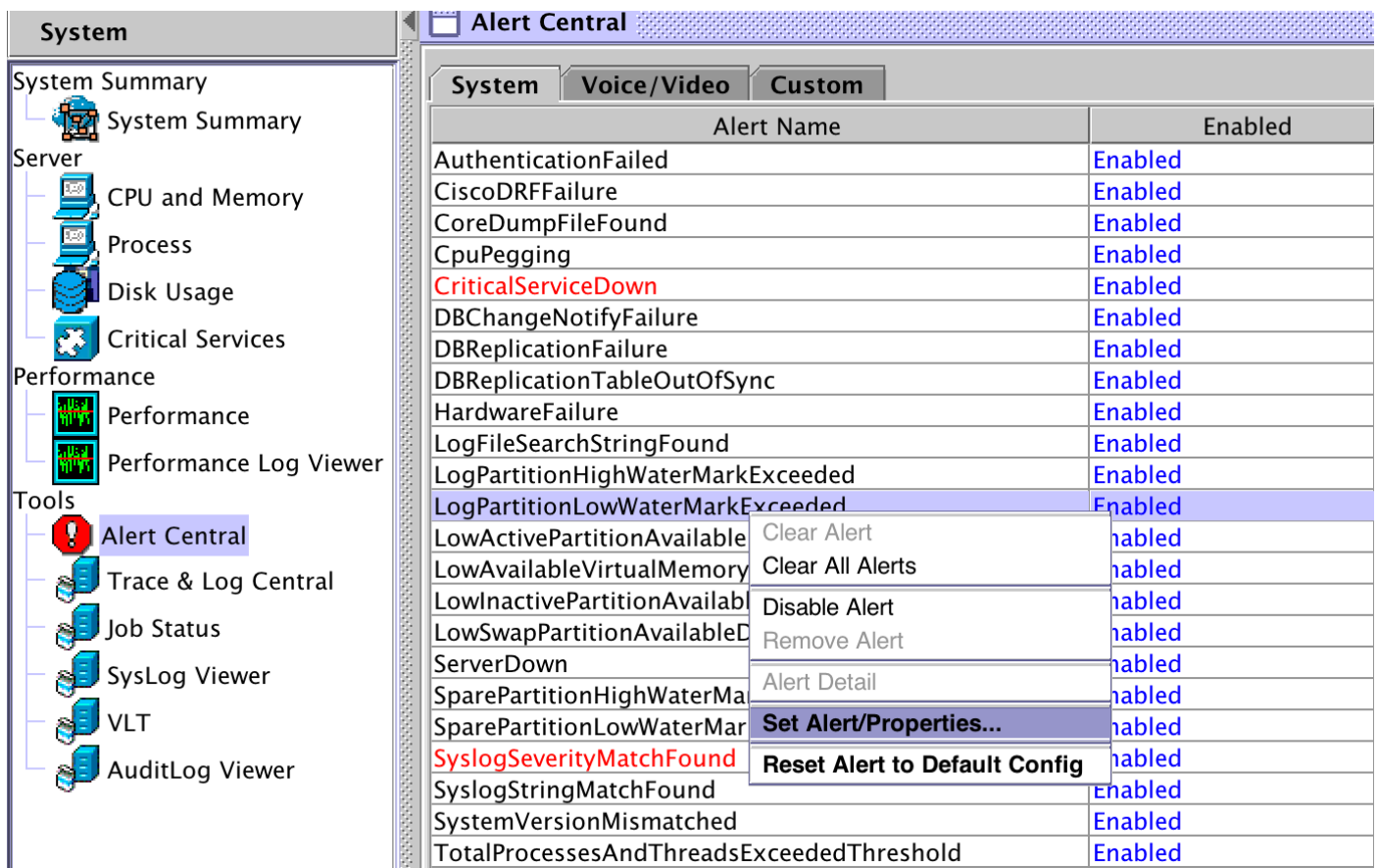
当阈值高水印降低它将清除更旧的日志文件，并且时这将创建在记录日志分区的另外的磁盘空间。

步骤

调节低水印

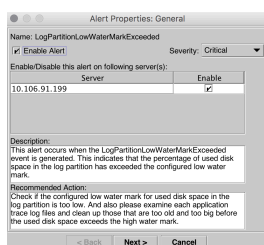
启动RTMT并且登陆对希望的集群，并且在左窗格请导航对，系统>工具>警报中央印制厂。

在右窗格上，在系统右键单击LogPartitionLowWaterMarkExceeded >集警报/属性下。

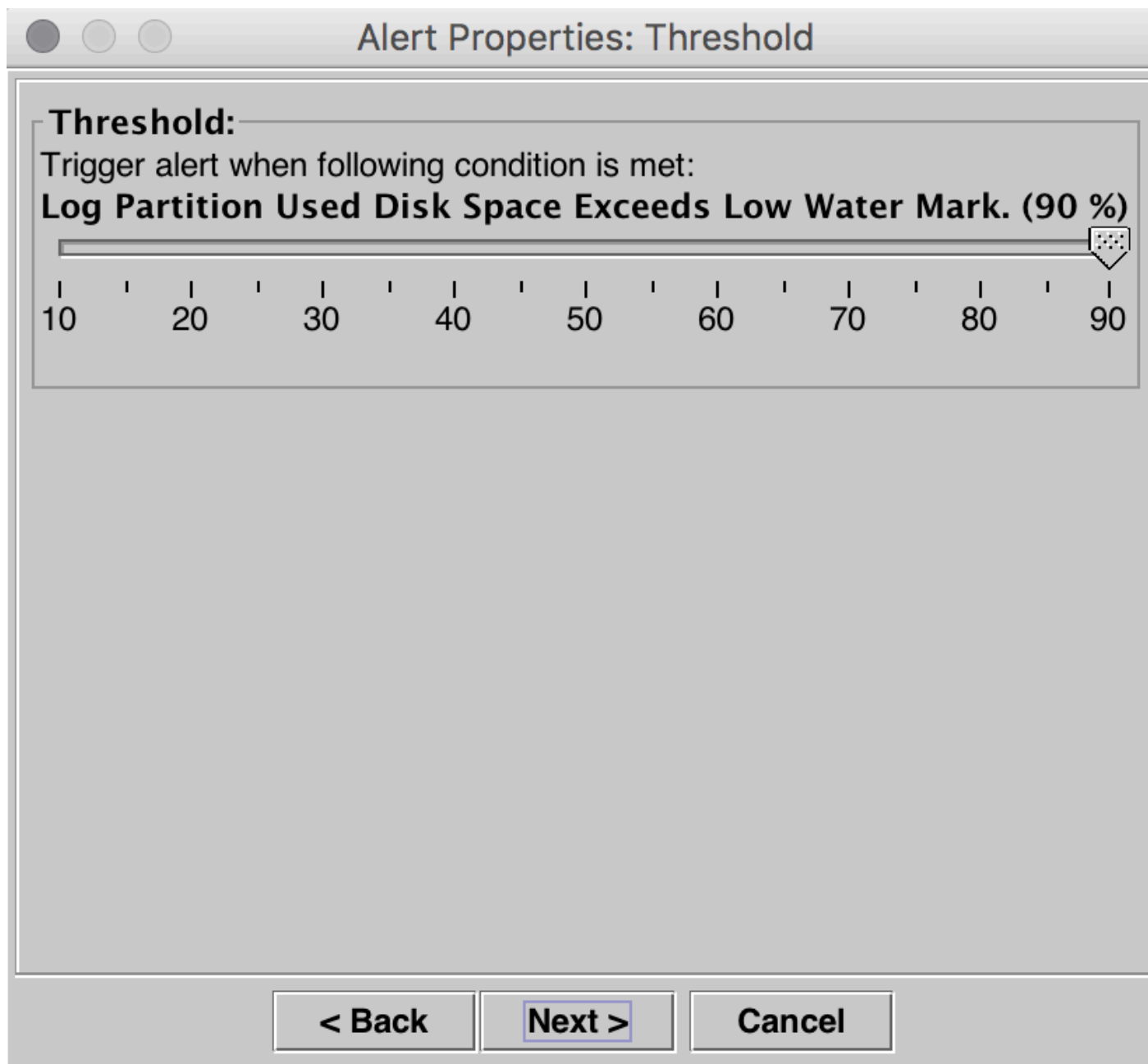


System	Voice/Video	Custom
Alert Name		Enabled
AuthenticationFailed		Enabled
CiscoDRFFailure		Enabled
CoreDumpFileFound		Enabled
CpuPegging		Enabled
CriticalServiceDown		Enabled
DBChangeNotifyFailure		Enabled
DBReplicationFailure		Enabled
DBReplicationTableOutOfSync		Enabled
HardwareFailure		Enabled
LogFileSearchStringFound		Enabled
LogPartitionHighWaterMarkExceeded		Enabled
LogPartitionLowWaterMarkExceeded		Enabled
LowActivePartitionAvailable	Clear Alert	Enabled
LowAvailableVirtualMemory	Clear All Alerts	Enabled
LowInactivePartitionAvailable	Disable Alert	Enabled
LowSwapPartitionAvailableD	Remove Alert	Enabled
ServerDown	Alert Detail	Enabled
SparePartitionHighWaterMa	Set Alert/Properties...	Enabled
SparePartitionLowWaterMar	Reset Alert to Default Config	Enabled
SyslogSeverityMatchFound		Enabled
SyslogStringMatchFound		Enabled
SystemVersionMismatched		Enabled
TotalProcessesAndThreadsExceededThreshold		Enabled

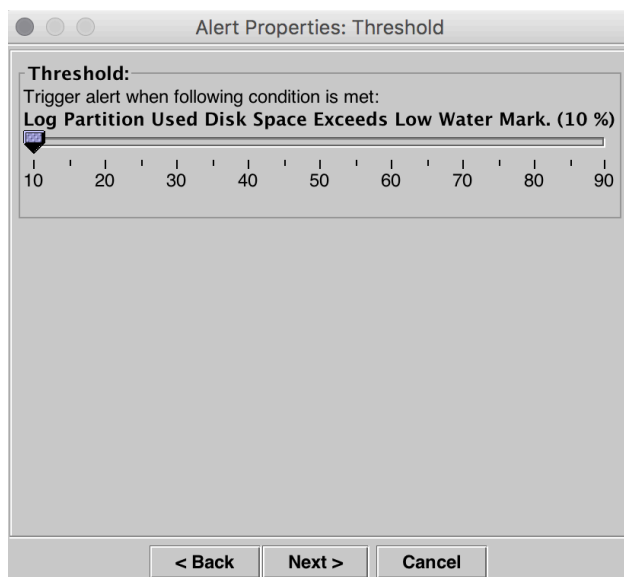
单击 Next。



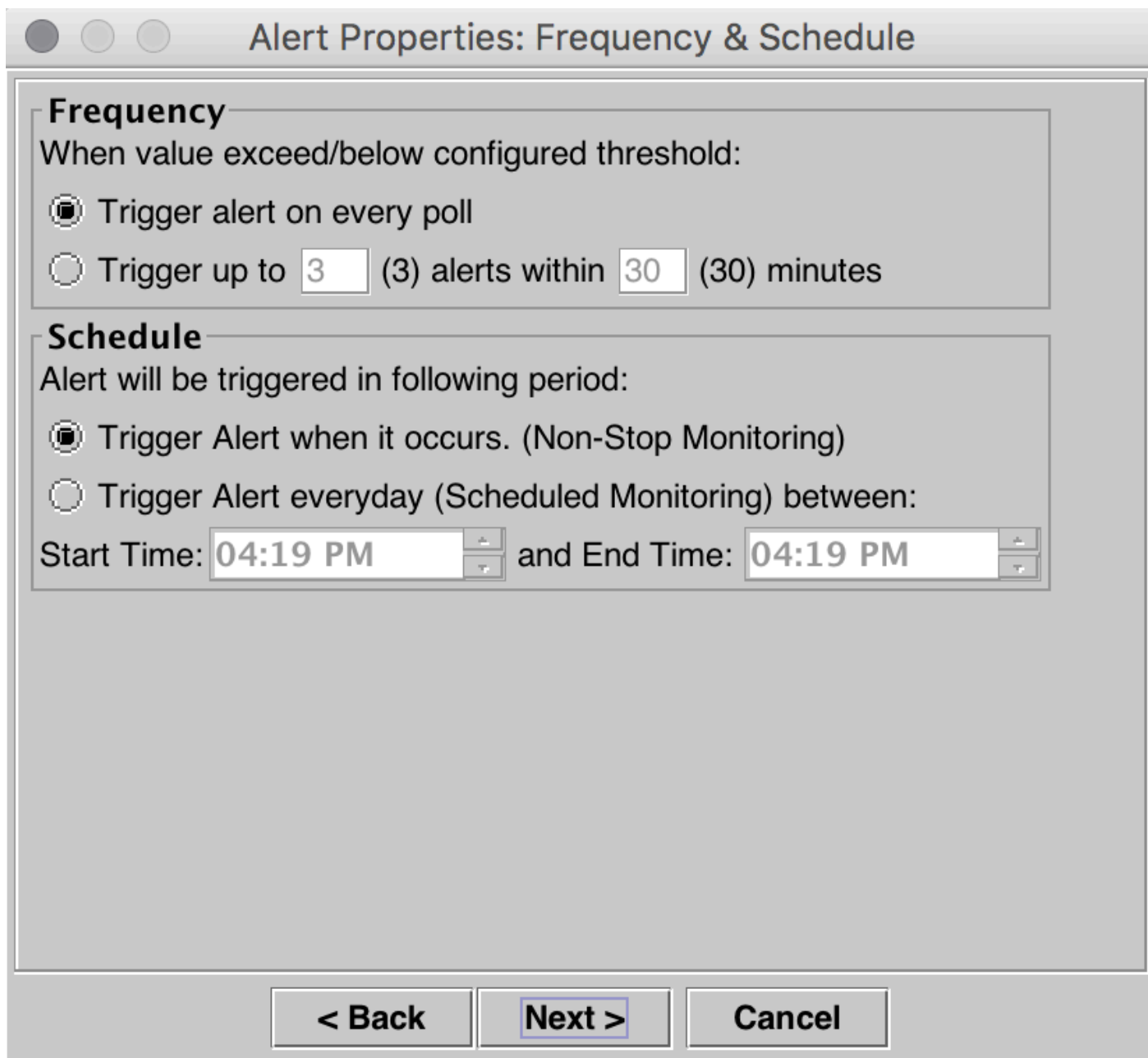
默认情况下，低水印设置到90%。



设置低水印为lowerer值，根据您的requirement其次然后单击。



单击 **Next**。



Alert Properties: Frequency & Schedule

Frequency
When value exceed/below configured threshold:

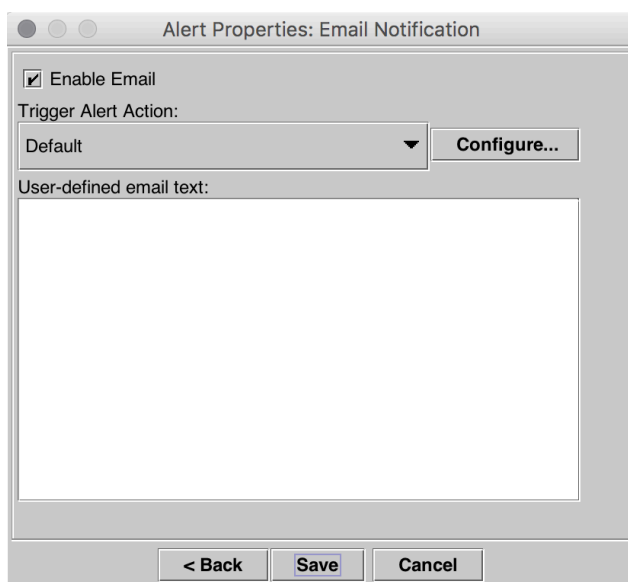
- Trigger alert on every poll
- Trigger up to (3) alerts within (30) minutes

Schedule
Alert will be triggered in following period:

- Trigger Alert when it occurs. (Non-Stop Monitoring)
- Trigger Alert everyday (Scheduled Monitoring) between:
Start Time: and End Time:

< Back **Next >** Cancel

单击 **Save**。



Alert Properties: Email Notification

Enable Email

Trigger Alert Action:
Default

User-defined email text:

< Back **Save** Cancel

调节高水印

一旦右窗格，在系统右键单击LogPartitionHighWaterMarkExceeded >集警报/属性下

The screenshot shows the 'Alert Central' window with a tree view on the left and a list of alerts on the right. The 'LogPartitionHighWaterMarkExceeded' alert is selected, and a context menu is open over it, showing options like 'Set Alert/Properties...'. The alert list includes various system and performance alerts, all marked as 'Enabled'.

Alert Name	Enabled
AuthenticationFailed	Enabled
CiscoDRFFailure	Enabled
CoreDumpFileFound	Enabled
CpuPegging	Enabled
CriticalServiceDown	Enabled
DBChangeNotifyFailure	Enabled
DBReplicationFailure	Enabled
DBReplicationTableOutOfSync	Enabled
HardwareFailure	Enabled
LogFileSearchStringFound	Enabled
LogPartitionHighWaterMarkExceeded	Enabled
LogPartitionLowWaterMarkExceeded	Enabled
LowActivePartitionAvailableDiskSpace	Enabled
LowAvailableVirtualMemory	Enabled
LowInactivePartitionAvailableDiskSpace	Enabled
LowSwapPartitionAvailableDiskSpace	Enabled
ServerDown	Enabled
SparePartitionHighWaterMarkExceeded	Enabled
SparePartitionLowWaterMarkExceeded	Enabled
SyslogSeverityMatchFound	Enabled
SyslogStringMatchFound	Enabled
SystemVersionMismatched	Enabled
TotalProcessesAndThreadsExceededThreshold	Enabled

单击 Next。

The dialog box shows the configuration for the 'LogPartitionHighWaterMarkExceeded' alert. It is currently enabled with a severity of 'Critical'. The alert is configured to be enabled on the server 10.106.91.199. The description and recommended action are also visible.

Name: LogPartitionHighWaterMarkExceeded

Enable Alert Severity: Critical

Enable/Disable this alert on following server(s):

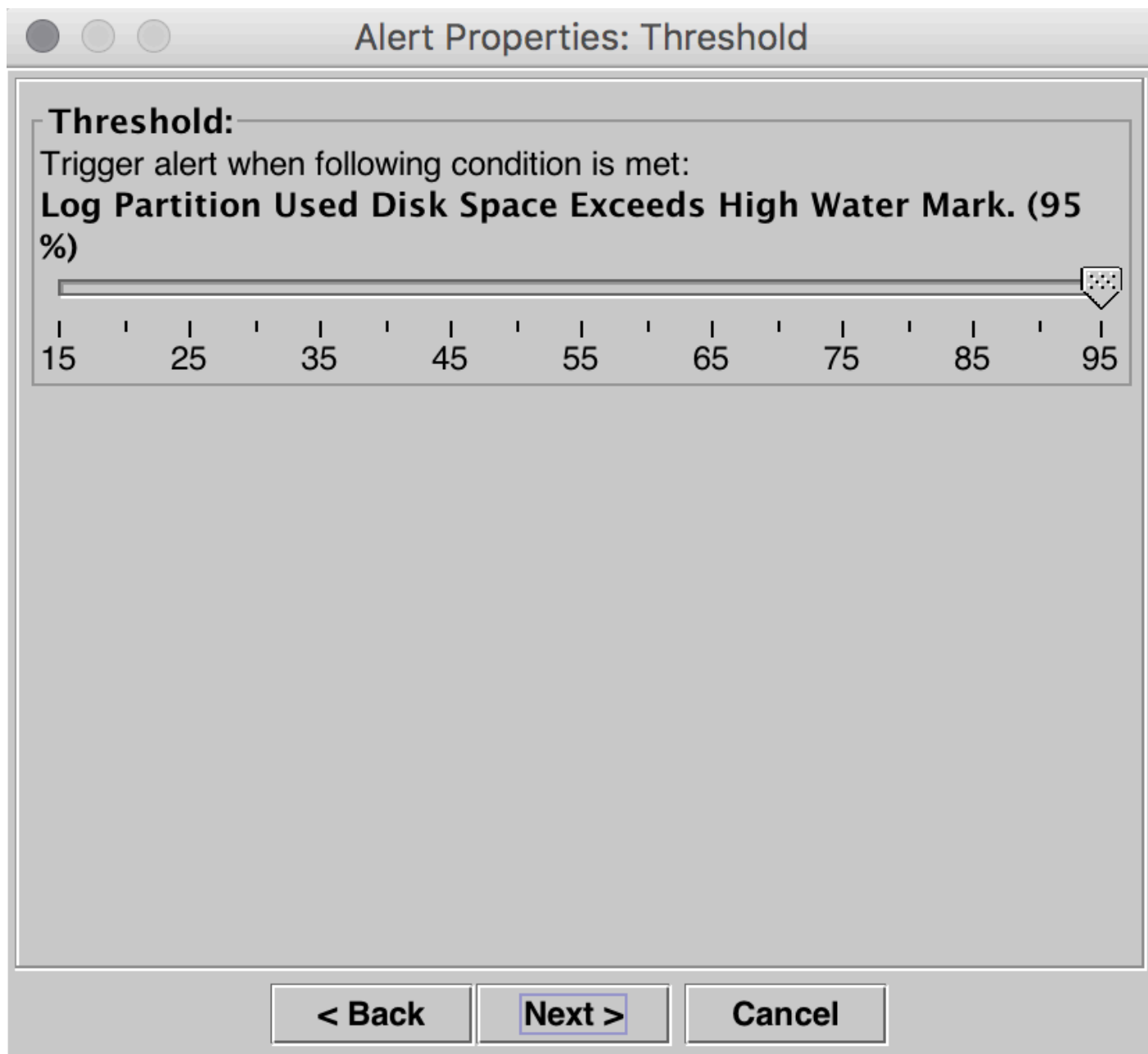
Server	Enable
10.106.91.199	<input checked="" type="checkbox"/>

Description:
This alert occurs when the LogPartitionHighWaterMarkExceeded event is generated. This indicates that the percentage of used disk space in the log partition has exceeded the configured high water mark.

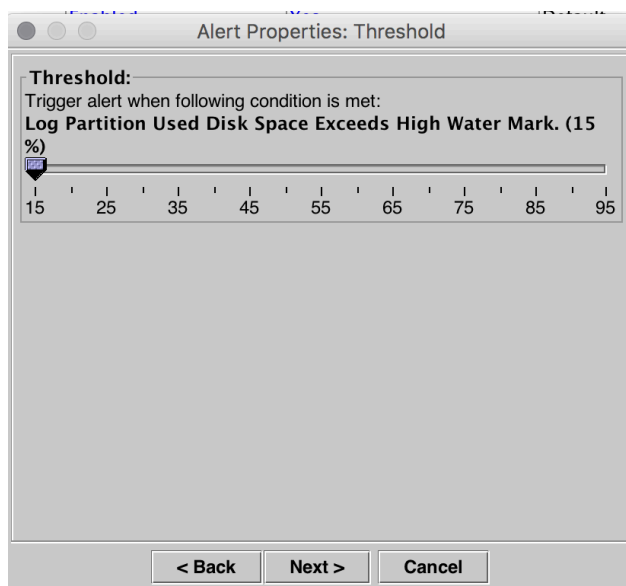
Recommended Action:
Check if the configured high water mark for used disk space in the log partition is too low.

< Back Next > Cancel

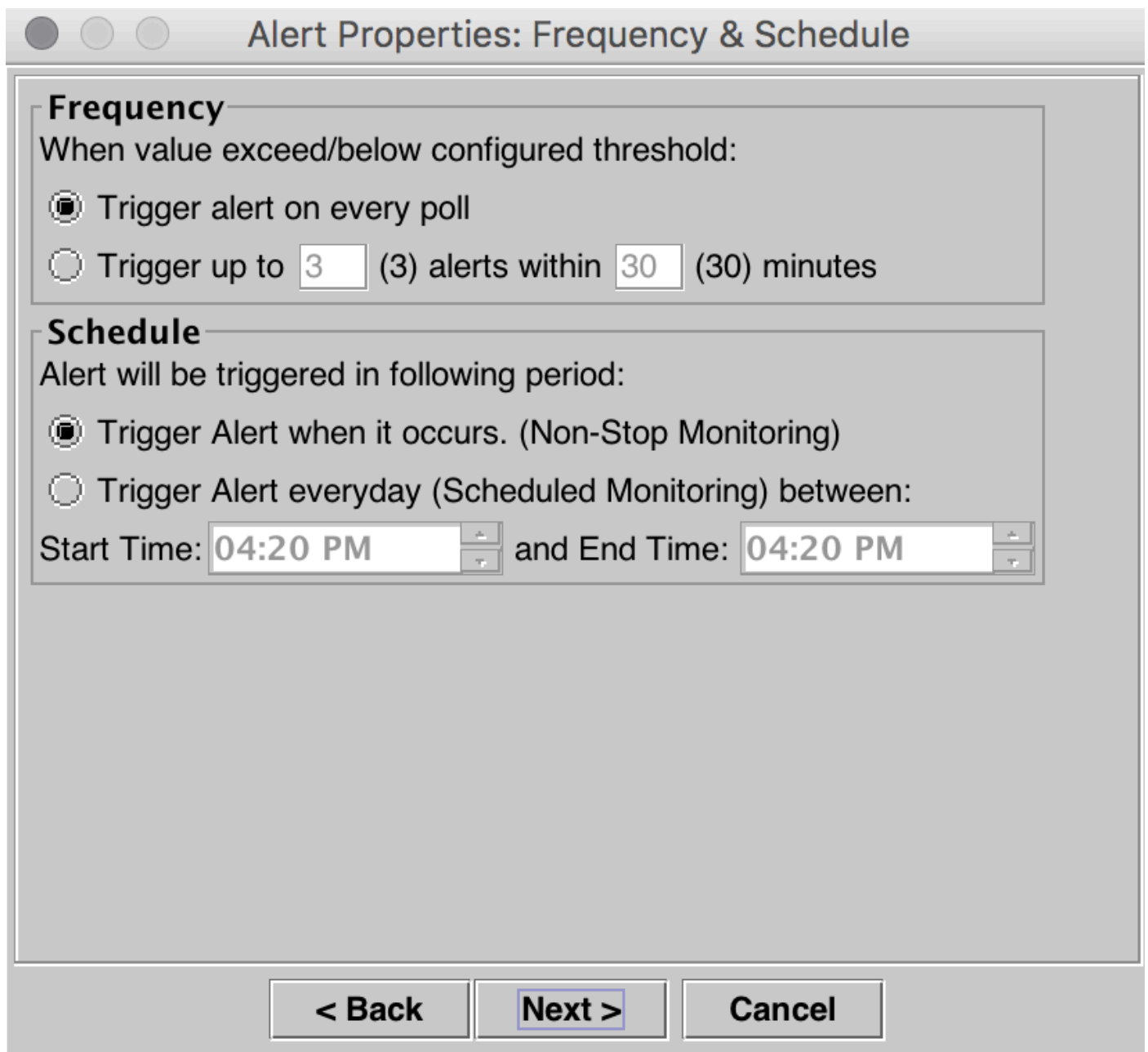
默认情况下，高水印设置到95%。



设置高水印为lowerer值，根据您的requirement其次然后单击。



单击 **Next**。



The dialog box is titled "Alert Properties: Frequency & Schedule". It is divided into two main sections: "Frequency" and "Schedule".

Frequency
When value exceed/below configured threshold:

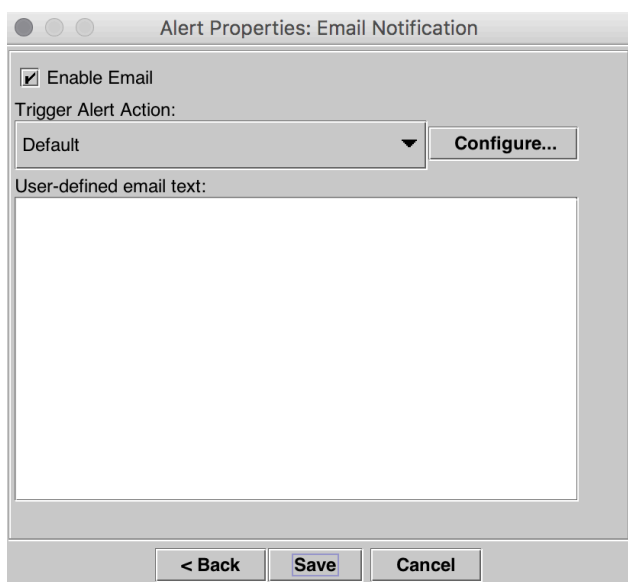
- Trigger alert on every poll
- Trigger up to (3) alerts within (30) minutes

Schedule
Alert will be triggered in following period:

- Trigger Alert when it occurs. (Non-Stop Monitoring)
- Trigger Alert everyday (Scheduled Monitoring) between:
Start Time: and End Time:

At the bottom of the dialog, there are three buttons: "< Back", "Next >" (which is highlighted with a blue border), and "Cancel".

单击 **Save**。



The dialog box is titled "Alert Properties: Email Notification".

Enable Email

Trigger Alert Action:
Default

User-defined email text:

At the bottom of the dialog, there are three buttons: "< Back", "Save", and "Cancel".

验证

在记录日志分区创建的另外的磁盘空间。在您调节后高和低水印可能验证在show status命令中在CallManager的CLI。

在调节水印前。

```
admin:show status
```

```
Host Name      : publisher
Date           : Thu Jul 21, 2016 16:07:16
Time Zone      : India Standard Time (Asia/Kolkata)
Locale         : en_US.UTF-8
Product Ver    : 10.0.1.10000-24
Unified OS Version : 6.0.0.0-2

Uptime:
16:07:17 up 72 days, 21:01, 1 user, load average: 0.21, 0.16, 0.11

CPU Idle: 93.06% System: 02.40% User: 04.29%
IOWAIT: 00.25% IRQ: 00.00% Soft: 00.00%
```

```
Memory Total: 8062096K
Free: 133808K
Used: 7928288K
Cached: 3312040K
Shared: 0K
Buffers: 342228K
```

	Total	Free	Used
Disk/active	22187548K	9256672K	12705464K (58%)
Disk/inactive	22187548K	20884420K	176064K (1%)
Disk/logging	77201424K	47443520K	25836240K (36%)

在调节水印以后。

```
admin:show status
```

```
Host Name      : publisher
Date           : Thu Jul 21, 2016 16:35:48
Time Zone      : India Standard Time (Asia/Kolkata)
Locale         : en_US.UTF-8
Product Ver    : 10.0.1.10000-24
Unified OS Version : 6.0.0.0-2

Uptime:
16:35:49 up 72 days, 21:29, 1 user, load average: 0.09, 0.12, 0.16

CPU Idle: 98.61% System: 00.88% User: 00.51%
IOWAIT: 00.00% IRQ: 00.00% Soft: 00.00%
```

```
Memory Total: 8062096K
Free: 1957460K
Used: 6104636K
Cached: 1477332K
Shared: 0K
Buffers: 360100K
```

	Total	Free	Used
Disk/active	22187548K	9256660K	12705476K (58%)
Disk/inactive	22187548K	20884420K	176064K (1%)
Disk/logging	77201424K	54805132K	18474628K (26%)

作为被看到的**Show status**输出，百分比值**使用的磁盘/记录日志分区**更改从**36%**到**26%**。

故障排除

目前没有针对此配置的故障排除信息。