

目录

[简介](#)

[先决条件](#)

[要求](#)

[使用的组件](#)

[如何更改记录日志位置](#)

[SRV记录\(ICD.log\)](#)

[Web Admin记录](#)

[LDAP记录日志\(ldaptrace/ldapwarning.log\)](#)

[CUP记录\(cupsplugin.log\)](#)

[CTI服务器\(ctiserverlog\)](#)

[验证](#)

[故障排除](#)

[相关的思科支持社区讨论](#)

Cisco Unified Attendant Console(CUAC)C:\Program(x86)\Cisco\Logging

Cisco

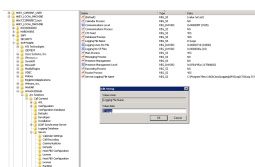
- CUAC
- Microsoft Windows 2008

- CUAC 10.x
- Microsoft Windows 2008

SRV(ICD.log)

1.

Computer\HKEY_LOCAL_MACHINE\SOFTWARE\Wow6432Node\Arc\



2.

Web Admin

1.

Computer\HKEY_LOCAL_MACHINE\SOFTWARE\Wow6432Node\Arc\ Web Admin \

Name	Type	Data
(Default)	REG_SZ	(value not set)
API Clients Level	REG_DWORD	0x00000103 (259)
API Clients Process	REG_SZ	YES
Clerks Level	REG_DWORD	0x00000003 (3)
Clerks Process	REG_SZ	YES
Data Objects Level	REG_DWORD	0x00000002 (2)
Data Objects Process	REG_SZ	NO
External APIs Level	REG_DWORD	0x00000202 (514)
External APIs Process	REG_SZ	YES
Internal Objects Level	REG_DWORD	0x00000002 (2)
Internal Objects Process	REG_SZ	NO
Logging File Name	REG_SZ	D:\Logs
Logging Lines Per File	REG_DWORD	0x0000+e20 (20000)
Logging No Of Files	REG_DWORD	0x00000032 (50)
Management Level	REG_DWORD	0x00000103 (259)
Management Process	REG_SZ	YES
Request Response Level	REG_DWORD	0x00000003 (3)
Request Response Process	REG_SZ	YES
System Level	REG_DWORD	0x00000103 (259)
System Process	REG_SZ	YES

2.

LDAP(ldaptrace/ldapwarning.log)

1. 导航到登记编辑的指定的位置。

Computer\HKEY_LOCAL_MACHINE\SOFTWARE\Wow6432Node\Arc\ LDAP\

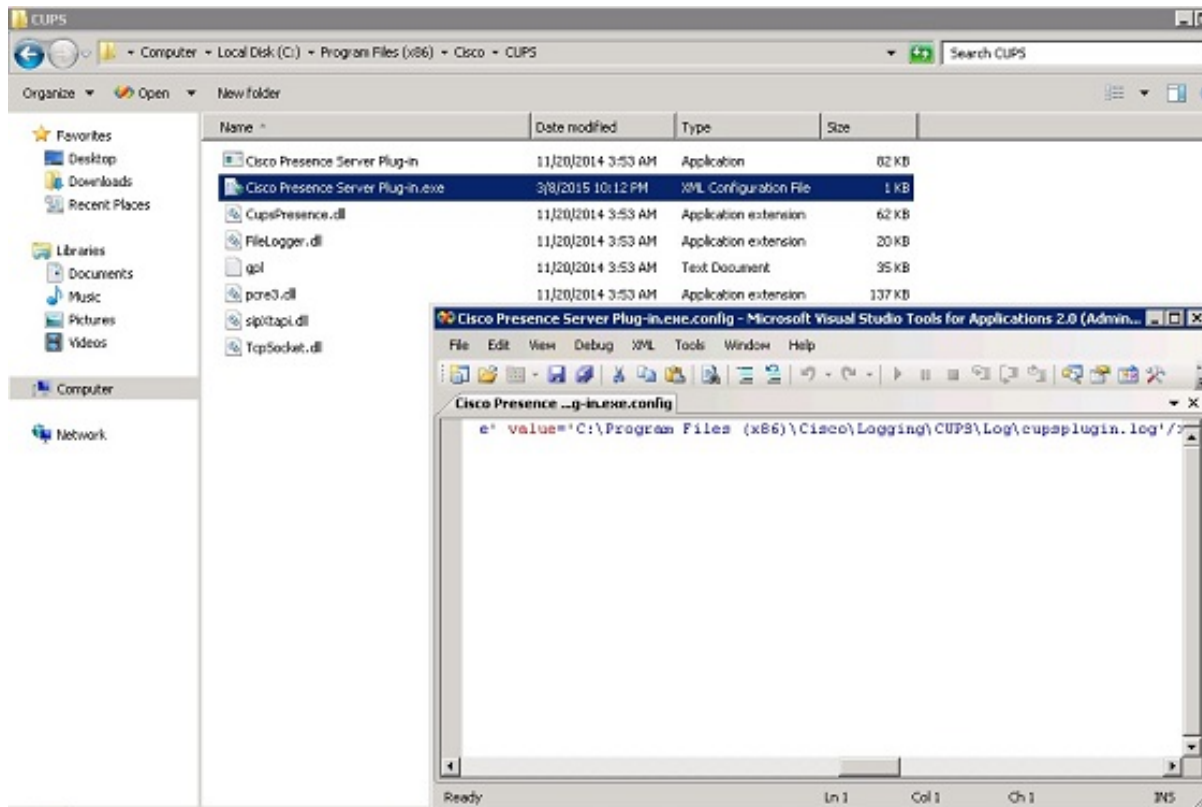
Name	Type	Data
(Default)	REG_SZ	(value not set)
Arc Source Level	REG_DWORD	0x00000007 (2031623)
External Source Level	REG_DWORD	0x00000007 (4128775)
Lines Per File	REG_DWORD	0x00000040 (200000)
Logging File Name	REG_SZ	D:\Logs
Management Level	REG_DWORD	0x00000007 (1933947)
MSI Server Level	REG_DWORD	0x00000007 (6684679)
Network Level	REG_DWORD	0x00000001 (193217)
No. of Logging Files	REG_DWORD	0x0000000a (10)

2.

CUP(cupsplugin.log)

C:\Program(x86)\Cisco\CUPS

1. Presence Serverin.exeXML

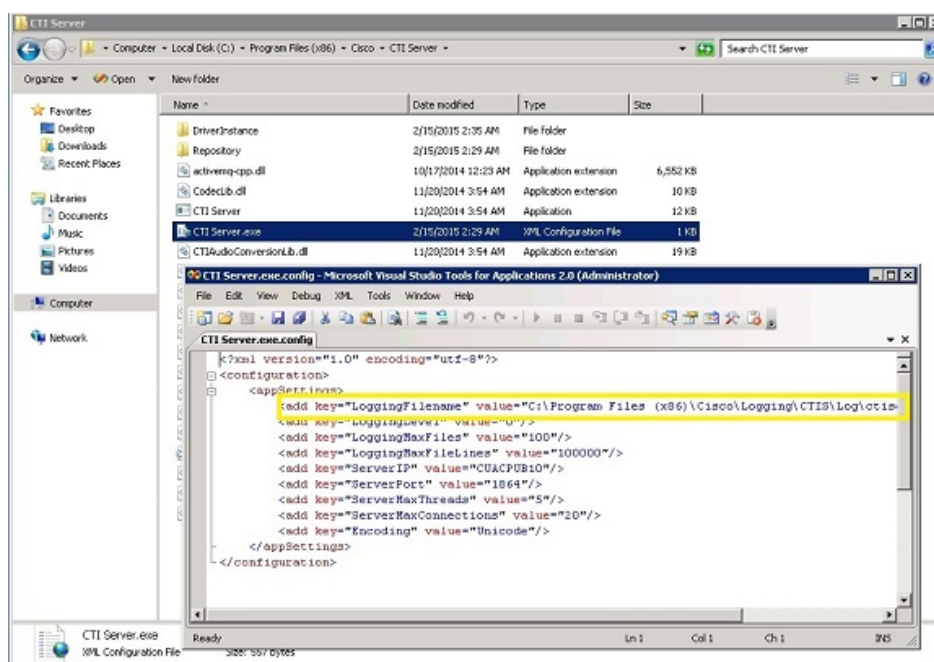


2.XML

CTI(ctiserverlog)

C:\Program(x86)\Cisco\CUPS

1. CTI Server.exeXML



2.XML