

如何提取套件认证和加载在Expressway服务器

Contents

[Introduction](#)

[Prerequisites](#)

[Requirements](#)

[Components Used](#)

[提取套件认证和加载在Expressway服务器](#)

[加载在Expressway服务器的证书](#)

Introduction

本文描述进程提取套件认证和加载在Expressway服务器。

Prerequisites

Requirements

Cisco 建议您了解以下主题：

- Expressway服务器
- WINDOWS PC

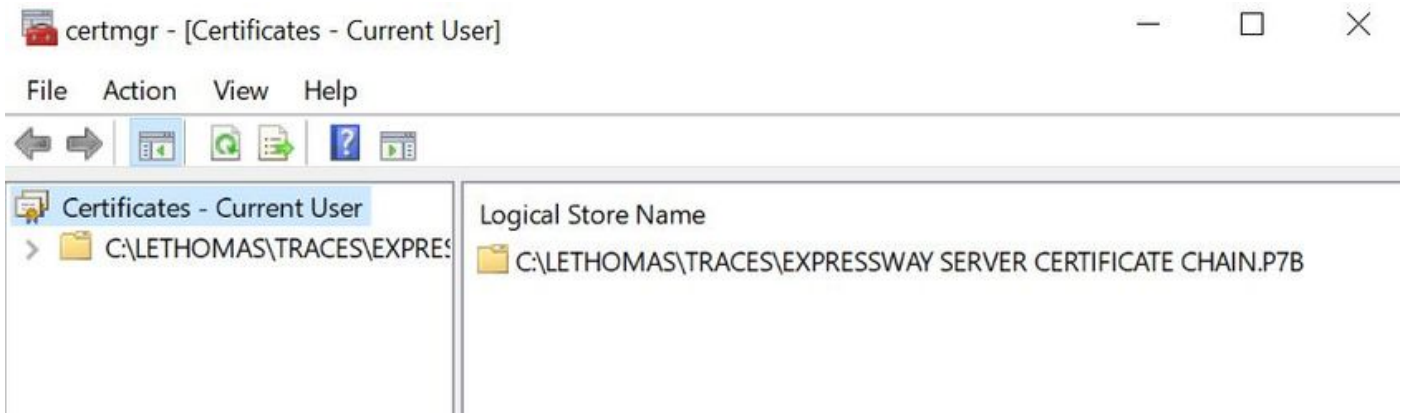
Components Used

This document is not restricted to specific software and hardware versions.

The information in this document was created from the devices in a specific lab environment. All of the devices used in this document started with a cleared (default) configuration. If your network is live, make sure that you understand the potential impact of any command.

提取套件认证和加载在Expressway服务器

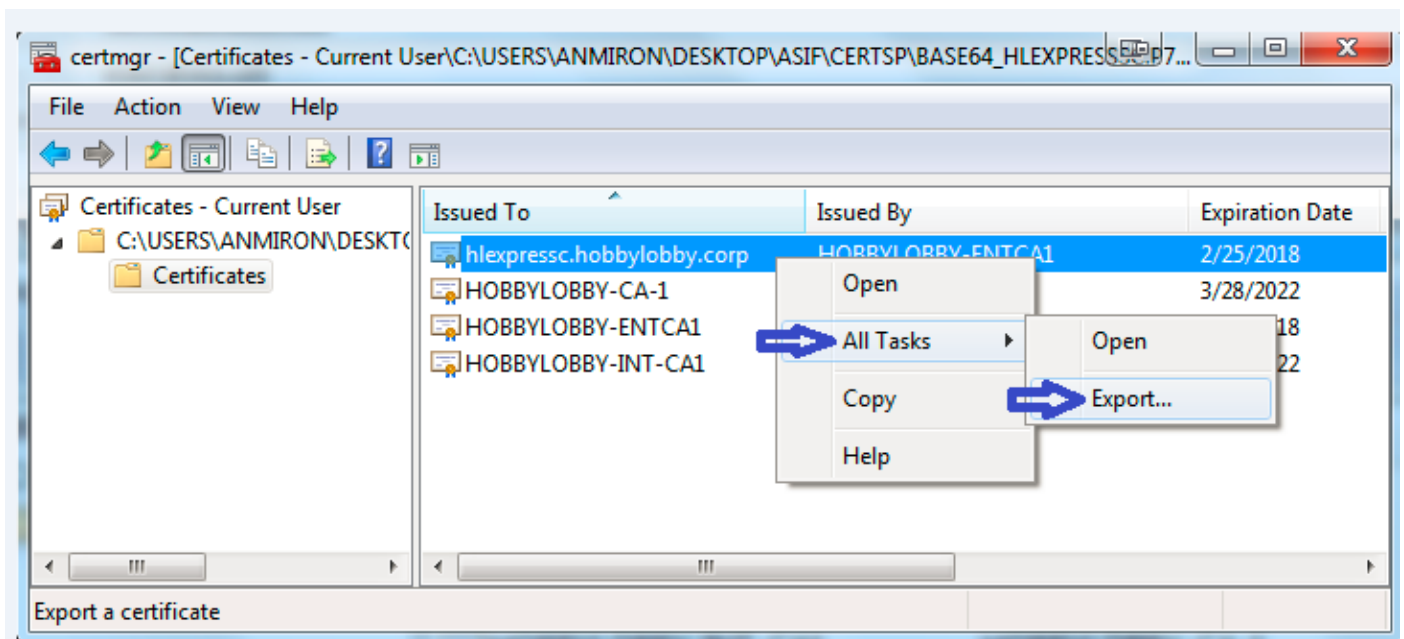
步骤1. 打开BASE64如镜像所显示，并且您看到屏幕。 打开文件夹在逻辑存储名称下。



步骤2. 打开一系列，并且您看到在证书文件的所有证书(一个服务器证明和三根源/中间证书)。

Issued To ^	Issued By	Expiration D...	Intended Purpo...	Friendly Name	Stat...	Certificate T...
Telstra AD Objects SHA1 C...	Telstra Policy CA1	25/11/2019	<All>	<None>	R	Subordinate...
Telstra Policy CA1	Telstra Root CA	25/11/2019	<All>	<None>	R	Subordinate...
Telstra Root CA	Telstra Root CA	16/11/2034	<All>	<None>	R	
tgahnslev11expc.in.telstra.c...	Telstra AD Objects SHA1 CA ...	11/12/2018	Server Authenti...	<None>	R	Telstra Live ...

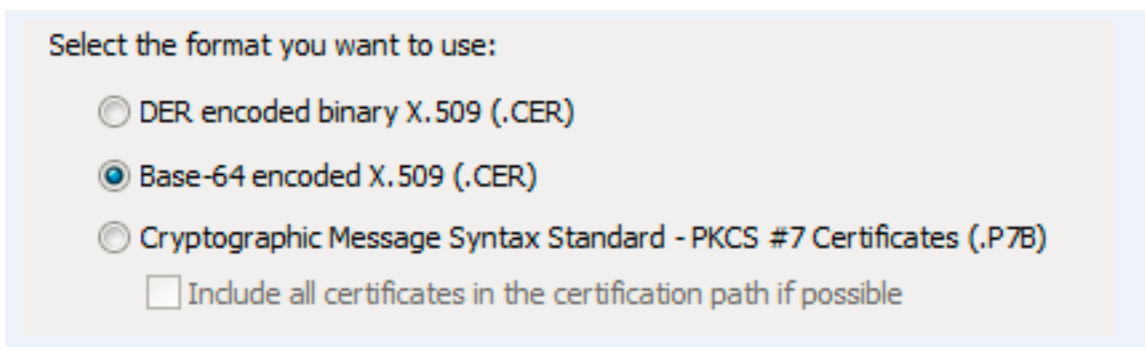
步骤3. 在您要下载，选择**所有任务>导出**的认证的用鼠标右键单击。



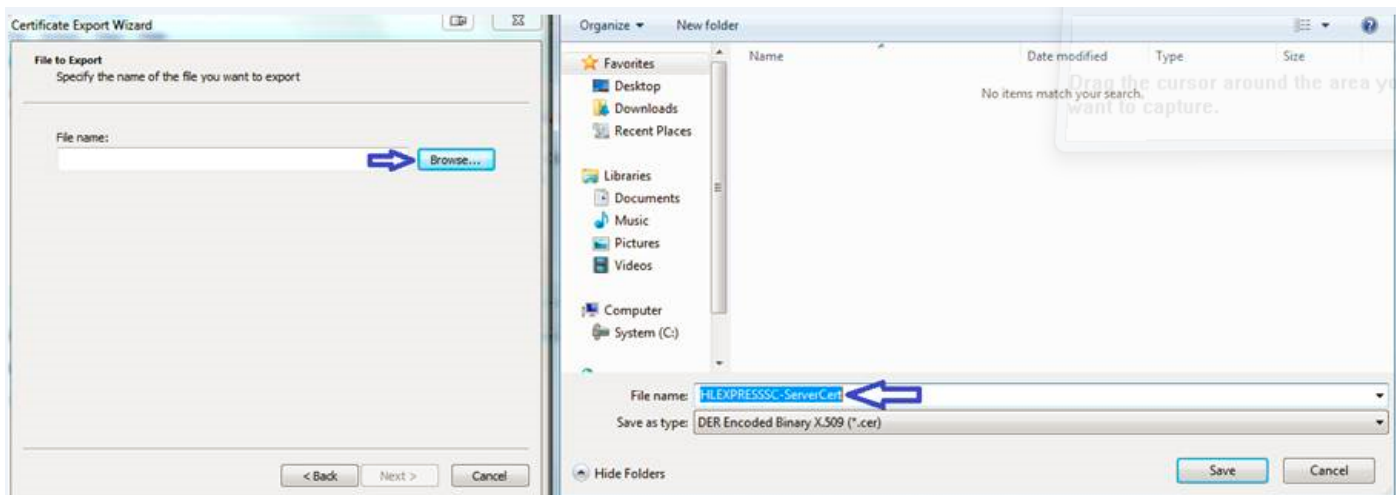
步骤4. The认证Export向导窗口出现。



步骤5.其次选择其次，然后Base-64编码的X.509选项，然后。



第6.步。新页面出现，选择访问，然后在冒出的窗口，请输入认证的文件名，然后选择保存。



第7步。该动作返回您到Browse页用路径在文件名下，其次选择。

步骤8.选择在Next窗口的完成，并且一个小的窗口将显现导出是成功的消息。认证在所选的路径被保存。

第9步。您必须重复每个认证的此进程在一系列。

在Expressway服务器的加载证书

对于根/半成品证书，请连接对Expressway网页>维护>安全证书>委托CA列表>访问。现在请选择认证然后添附CA证书。(此进程是为每cert)。



Status System Configuration Users **Maintenance** [Help](#) [Logout](#)

You are here: [Maintenance](#) > [Security](#) > [Trusted CA certificate](#)

Type	Issuer	Subject	Expiration date	Validity	View
<input type="checkbox"/> Certificate	O=Temporary CA 51c787dd-d64d-4e58-90ec-f89cfe2eadee, OU=Temporary CA 51c787dd-d64d-4e58-90ec-f89cfe2eadee, CN=Temporary CA 51c787dd-d64d-4e58-90ec-f89cfe2eadee	Matches Issuer	Sep 26 2021	Valid	View (decoded)
<input type="checkbox"/> Certificate	CN=junaranj-WIN2012AD-DNS-CA-1	Matches Issuer	Jun 22 2036	Valid	View (decoded)

[Show all \(decoded\)](#) [Show all \(PEM file\)](#) [Delete](#) [Select all](#) [Unselect all](#)

Upload

Select the file containing trusted CA certificates [Browse...](#) No file selected.

为了加载服务器证明，请连接在Expressway网页>维护> Security证书>Server证书。

Server certificate

You are here: Maintenance > Security > Server certificate

Server certificate data

Server certificate

Show (decoded) Show (PEM file)

Currently loaded certificate expires on

Dec 20 2018

Reset to default server certificate

Certificate signing request (CSR)

Certificate request

There is no certificate signing request in progress

Generate CSR

Upload new certificate

Select the server private key file

Browse... No file selected.

Re-use current private key

Select the server certificate file

Browse... No file selected.

Upload server certificate data

Note: 一旦加载服务器证明，消息指示重新启动对于更改是必需的生效。