

Windows服务器2003年对SN5428配置示例的iSCSI主机

目录

[简介](#)

[先决条件](#)

[要求](#)

[使用的组件](#)

[规则](#)

[背景信息](#)

[配置](#)

[网络图](#)

[配置](#)

[验证](#)

[故障排除](#)

[相关信息](#)

简介

在IP (iSCSI)驱动程序的思科小型计算机系统接口是iSCSI解决方案的关键组件。这些iSCSI驱动在服务器驻留，他们：

- 截取iSCSI命令。
- 封装命令到IP信息包。
- 重定向他们对Cisco SN 5420、Cisco SN 5428、Cisco SN 5428-2或思科MDS/IPS-8。

本文为Windows服务器2003年iSCSI主机提供配置示例给SN5428。

先决条件

要求

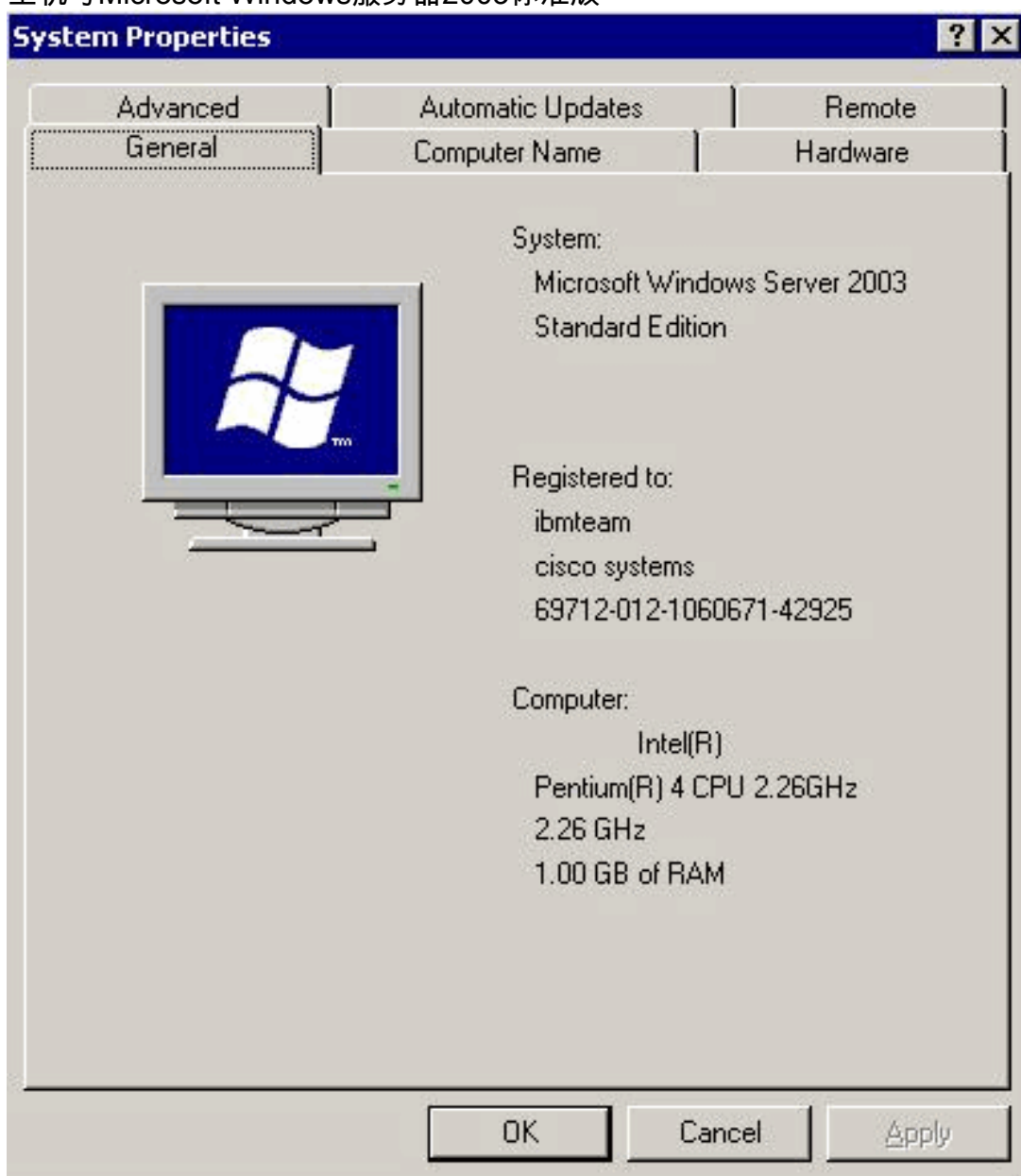
尝试进行此配置之前，请确保满足以下要求：

- 安装是兼容对您的Microsoft Windows版本的iSCSI驱动。在Microsoft Windows 2000，XP或者2003年参考驱动程序的多数当前版本的[Cisco iSCSI驱动\(仅限注册用户\)](#)网页。文件的名字列表中，比如Cisco iSCSI Driver Version (version number) for Win2k。
- Microsoft Windows的iSCSI驱动2003年需要Microsoft Windows服务器2003企业版、标准版或者网上版本。

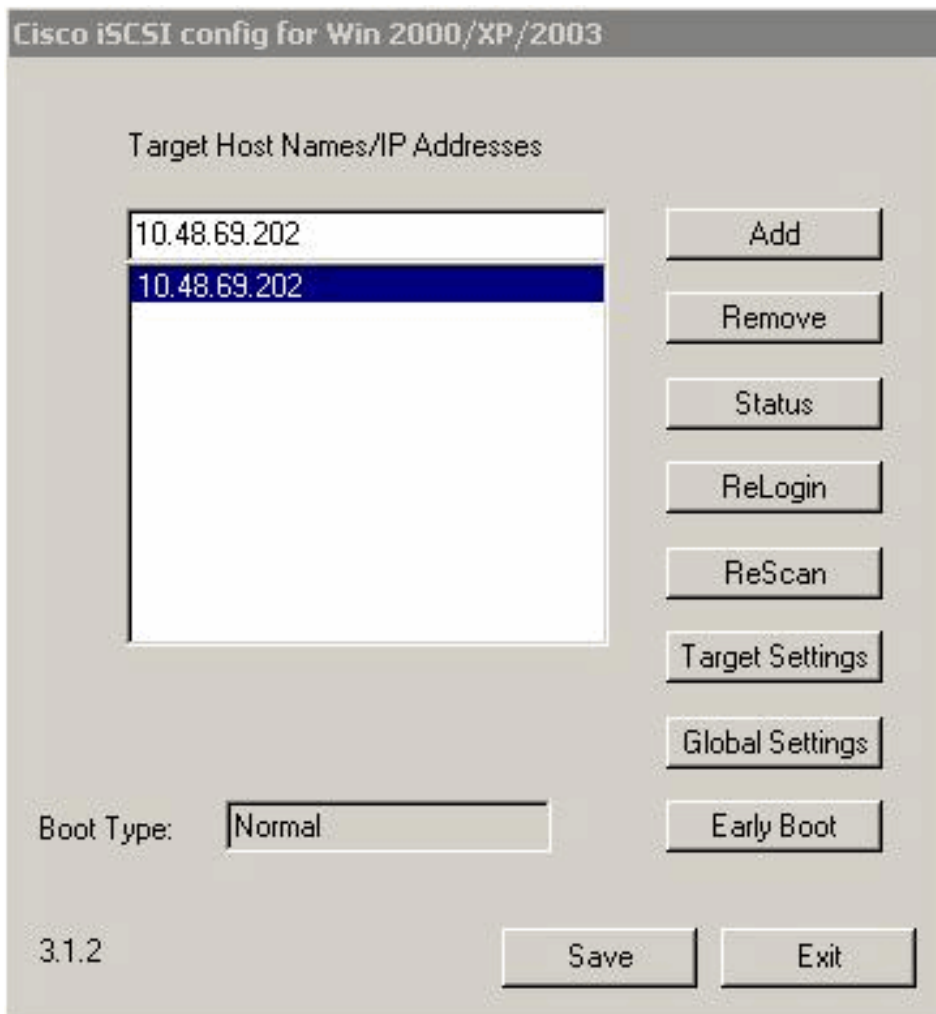
使用的组件

本文档中的信息基于以下软件和硬件版本：

- 主机与Microsoft Windows服务器2003标准版



- Microsoft Windows服务器2003的Cisco iSCSI驱动3.1.2。您能看到iSCSI驱动版本在思科iSCSI Config窗口的左下。



- Cisco SN 5428用软件版本3.3.2-K9

```
*[rita]# show ver Cisco SN 5428-K9 Storage Router CLI Version: 2.1 iSCSI Version: 0/2
(Min/Max) System Bootstrap: 3.3.2-K9 Operating System: 3.3.2-K9 Switch Version: V1.4.0.43-0
Application: 3.3.2-K9 Web Server: R6_1_0 OpenSSH: 3.4p1 OpenSSL: 0.9.6e Zlib: 1.1.4
Copyright (c) 1986-2002 by Cisco Systems, Inc
```

本文档中的信息都是基于特定实验室环境中的设备编写的。本文档中使用的所有设备最初均采用原始（默认）配置。如果您使用的是真实网络，请确保您已经了解所有命令的潜在影响。

[规则](#)

有关文档规则的详细信息，请参阅 [Cisco 技术提示规则](#)。

[背景信息](#)

路由提供有访问的iSCSI IP主机对光纤信道(FC)存储设备，好象存储设备直接地附加到主机。对设备访问的管理主要在SN 5428存储路由器。iSCSI目标是对于一个组物理存储设备的任意名称。iSCSI目标被创建并且被映射到附在SN 5428上的物理存储设备。存储路由器提交iSCSI目标到IP主机，好象物理存储设备直接地附加到主机。存储设备不知道与iSCSI路由的每台IP主机。存储设备知道SN5428并且回应，好象它一台FC主机。iSCSI路由包括路由iSCSI请求和答复在主机在IP网络和FC存储设备之间。

每一个需要通过SN 5428存储路由器IP接入方式存储的主机，需要安装有兼容的iSCSI驱动程序。当您使用iSCSI协议时，iSCSI驱动允许IP主机传输iSCSI请求和答复在IP网络。iSCSI驱动看来是一iSCSI或FC驱动程序一个周边信道的在主机从主机操作系统(OS)的角度。iSCSI路由包括这些主要操作：

- 传输iSCSI请求和答复在一个IP网络在主机和SN 5428存储路由器之间。
- 路由iSCSI请求和答复在主机在IP网络和FC存储设备之间。
- 传输iSCSI请求和答复在SN 5428存储路由器和FC存储设备之间。

iSCSI路由在SN 5428存储路由器发生通过物理存储设备映射到iSCSI目标。您能映射iSCSI目标到多个物理设备。iSCSI目标总是包含至少一个逻辑单元编号(LUN)。在iSCSI目标上的每个LUN映射到物理存储器目标上的单个LUN。

您能选择目标和LUN或只通过目标映射存贮映射的。目标和LUN映射将iSCSI目标和LUN组合映射到物理存储器目标和LUN组合中。Target-only映射映射一个iSCSI目标到物理存储器目标及其LUN。

使用目标和LUN映射，iSCSI目标名称和iSCSI LUN编号指定并且被映射对物理存储器地址为一个这些LUN：

- WWPN + LUN (全世界端口名+ LUN)组合
- LUN ID (唯一LUN标识符)
- LUN序列号

LUN使可用作为iSCSI LUN并且用指定的iSCSI LUN编号编号。例如，如果作为数据库指定的iSCSI目标和iSCSI LUN和LUN 9被映射对物理存储器地址WWPN 3100112233445566，LUN 12LUN 12是可用的作为一iSCSI LUN。iSCSI驱动看到有作为LUN识别的一iSCSI LUN的iSCSI数据库目标9。iSCSI LUN出现作为一存储设备到主机。

iSCSI目标名称指定并且被映射对一个WWPN存储设备仅控制器的物理存储器地址有只通过目标映射的。存贮控制器中任何已有的LUN都可以用作iSCSI LUNs，并且与存贮控制器中的LUN编号相同。例如，LUN 0-2变得可用作为三iSCSI LUN，如果作为Webserver2000指定的iSCSI目标被映射对物理存储器地址WWPN 3100112233445577，并且LUN 0-2是可用的在该控制器。iSCSI驱动看到iSCSI Webserver2000目标作为有三iSCSI LUN 0，LUN 1和LUN的2.一个控制器。每iSCSI LUN出现作为一分开的存储设备到主机。

iSCSI路由的访问在IP主机和存储路由器被控制。iSCSI驱动在IP主机配置用路由在主机是传输iSCSI请求和答复的存储路由器的iSCSI的千兆以太网(GE) IP地址实例。访问在存储路由器被控制到访问列表和主机的VLAN ID (VID)编号。访问在SN5428可以进一步被控制通过验证。

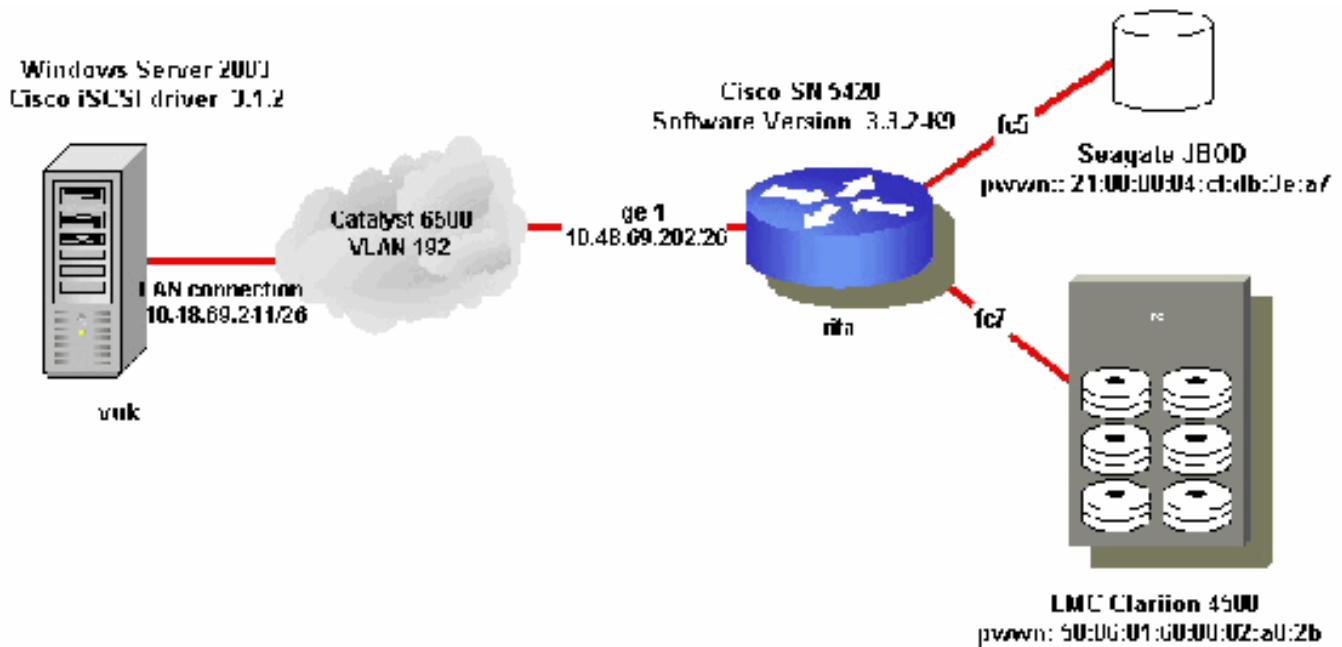
配置

本部分提供有关如何配置本文档所述功能的信息。

注意：有关本文档所用命令的详细信息，请使用[命令查找工具](#)（[仅限注册用户](#)）。

网络图

本文档使用以下网络设置：



配置

本文档使用以下配置：

- [Vuk \(Windows服务器2003\)](#)
- [瑞塔\(SN5428\)](#)

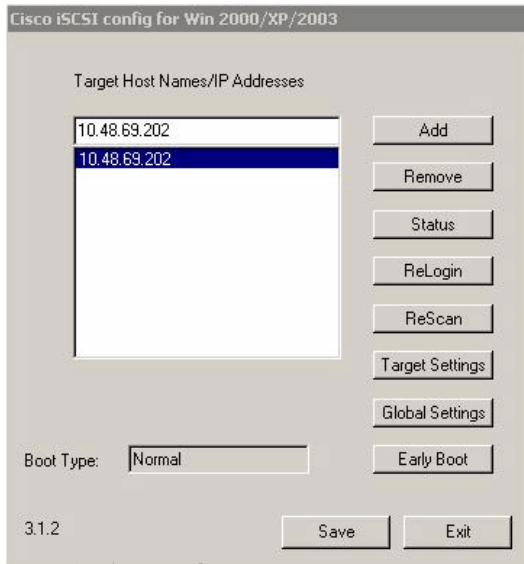
Vuk (Windows服务器2003)

完成这些初始配置任务：

- 设置的SN5428系列系统的iSCSI目标IP地址驱动程序访问。
- 设置iSCSI目标认证用户名和密码。
- 保存iSCSI目标配置并且设置驱动程序启动类型。

完成这些步骤配置驱动程序：

1. 作为有管理员权限的一个用户登录到计算机。
2. 选择**Start > Settings > Control Panel**和双击**iSCSI设置**。iSCSI设置程序造成成功2000/XP/2003对话框的**思科iSCSI设置**显示。
3. 完成这些步骤配置路由在SN5428系列系统的iSCSI的IP地址实例在Win 2000对话框的Cisco iSCSI设置：输入路由在SN5428系列系统的iSCSI的IP地址实例在**目标主机主机名/IP地址**文本框。IP地址是在本例中配置示例的10.48.69.202。单击**Add**。IP地址显示在**目标主机主机名/IP地址**文本框之下。



4. 选择保存>退出。
5. 重新启动计算机。

瑞塔(SN5428)

```
! ACCESSLIST
!
accesslist vuk_win2003
accesslist vuk_win2003 10.48.69.241/255.255.255.255
!--- An access list has been created to allow vuk only.
! SCSIROUTER ! scsirouter winser2003 !--- An iSCSI
routing instance winser2003 !--- An iSCSI
setup. scsirouter winser2003 description "Microsoft
Windows Server 2003" scsirouter winser2003
authentication "none" scsirouter winser2003 username
"none" scsirouter winser2003 password "none" scsirouter
winser2003 primary "none" scsirouter winser2003
reserveproxy disable scsirouter winser2003 failover
primary none scsirouter winser2003 failover secondary
none scsirouter winser2003 lun reset no !--- Interface
(ge1) assigned to iSCSI instance winser2003. !--- IP
hosts use 10.48.69.202 to access the iSCSI routing
instance. scsirouter winser2003 serverIf ge1
10.48.69.202/255.255.255.192 !--- Target emc-lun0-lun1
is an example of target-and-LUN !--- mapping with LUN ID
addressing. scsirouter winser2003 target emc-lun0-lun1
lun 0 lunid "600601608802a82bda05b6a9b69d7b00"
scsirouter winser2003 target emc-lun0-lun1 lun 1 lunid
"600601608802a82b6a660d74cb33886c" scsirouter winser2003
target emc-lun0-lun1 description "emc-lun0-lun1"
scsirouter winser2003 target emc-lun0-lun1 enable
scsirouter winser2003 target emc-lun0-lun1 accesslist
"vuk_win2003" rw scsirouter winser2003 target emc-lun0-
lun1 accesslist "none" ro scsirouter winser2003 target
emc-lun0-lun1 maxcmdqueuedepth "0" scsirouter winser2003
target emc-lun0-lun1 trespass !--- Target emc-lun3-lun33
is an example of target-and-LUN !--- mapping with WWPN
addressing. !--- LUN 3 has mapped to LUN 3 on EMC, and
LUN 4 has mapped LUN 33 on EMC. scsirouter winser2003
target emc-lun3-lun33 lun 3 wwpn "500601608802a82b" lun
"3" scsirouter winser2003 target emc-lun3-lun33 lun 4
wwpn "500601608802a82b" lun "33" scsirouter winser2003
target emc-lun3-lun33 description "emc-lun3-lun33"
scsirouter winser2003 target emc-lun3-lun33 enable
scsirouter winser2003 target emc-lun3-lun33 accesslist
```

```
"any" rw scsirouter winser2003 target emc-lun3-lun33
accesslist "none" ro scsirouter winser2003 target emc-
lun3-lun33 maxcmdqueuedepth "0" scsirouter winser2003
target emc-lun3-lun33 trespass !--- Target seagate is an
example of target-only mapping with WWPN addressing.
scsirouter winser2003 target seagate wwpn
"21000004cfdb3ea7" scsirouter winser2003 target seagate
description "apcon1" scsirouter winser2003 target
seagate enable scsirouter winser2003 target seagate
accesslist "any" rw scsirouter winser2003 target seagate
accesslist "none" ro scsirouter winser2003 target
seagate maxcmdqueuedepth "0" no scsirouter winser2003
target seagate trespass ! ! SYSTEM ! hostname rita ! !
Mgmt Port ! interface mgmt ip-address
10.48.69.148/255.255.255.192 ! ! GE ! interface gel
autonegotiation autodetect interface gel mtusize 1500
interface gel vlan enable ! ! GE ! interface ge2
autonegotiation autodetect interface ge2 mtusize 1500
interface ge2 vlan enable ! ! ROUTES ! ip default-
gateway 10.48.69.129 ! ! RIP ! no ip rip enable ip rip
timers invalid 180 ! ! ADMIN LOGIN ! admin password
<password> ! ! MONITOR LOGIN ! monitor password
<password> ! ! SNTP ! clock timezone GMT ! ! SNMP !
snmp-server community public ro snmp-server community
private rw no snmp-server host all traps no snmp-server
sendauthtraps snmp-server linkupdown mgmt snmp-server
linkupdown gel snmp-server linkupdown ge2 snmp-server
linkupdown fc1 snmp-server linkupdown fc2 snmp-server
linkupdown fc3 snmp-server linkupdown fc4 snmp-server
linkupdown fc5 snmp-server linkupdown fc6 snmp-server
linkupdown fc7 snmp-server linkupdown fc8 ! ! TELNET !
no session-timeout ! ! SSH ! ssh enable ! ! HA ! ! ha
configuration standalone ! ! LOGGING ROUTE FACILITY !
logging level notice from all to all logging level info
from all to logfile ! ! RESTRICT ! restrict mgmt ftp no
restrict mgmt telnet no restrict mgmt http no restrict
mgmt snmp restrict mgmt ssl no restrict mgmt ssh !
restrict ha ftp restrict ha telnet no restrict ha http
restrict ha snmp restrict ha ssl restrict ha ssh !
restrict gel ftp restrict gel telnet restrict gel http
restrict gel snmp restrict gel ssl restrict gel ssh !
restrict ge2 ftp restrict ge2 telnet restrict ge2 http
restrict ge2 snmp restrict ge2 ssl restrict ge2 ssh ! !
! CDP ! cdp enable cdp timer 60 cdp interface mgmt
enable cdp interface gel enable cdp interface ge2 enable
! ! FC SWITCH ! fcswitch ratov 10000 fcswitch edtov 2000
fcswitch dstov 5000 fcswitch fstov 1000 fcswitch zoning
default All fcswitch zoning autosave enable fcswitch
zoning merge SW2 fcswitch domainid 1 force no fcswitch
domainid lock enable fcswitch interop-credit 12 ! ! FC
ZONE ALIAS ! fcalias iscsi fcalias iscsi member wwpn
280000059ba695e0 !--- Initiator WWPN1. fcalias iscsi
member wwpn 290000059ba695e0 !--- Initiator WWPN2. !---
The LUN mapping and LUN masking on the storage device !-
-- must be done with WWPN1 and WWPN2. ! ! FC ZONE ! zone
jbod !--- Creates a zone for seagate. zone jbod member
wwpn 21000004cfdb3ea7 zone jbod member fcalias iscsi
zone spa !--- Creates a zone for EMC Clariion. zone spa
member wwpn 500601608802a82b zone spa member fcalias
iscsi ! ! FC ZONE SET ! zoneset iscsidoc !--- Creates a
zoneset iscsidoc with members spa and jbod. zoneset
iscsidoc zone jbod no zoneset iscsidoc enable zoneset
iscsidoc zone spa no zoneset iscsidoc enable ! ! FC
PORTS ... interface fc5 enable interface fc5 ms-enable
```

```
enable no interface fc5 al-fairness enable interface fc5
fan-enable enable interface fc5 ext-credit 0 interface
fc5 mfs-bundle enable timeout 10 interface fc5 linkspeed
auto interface fc5 type gl-port ! interface fc6 enable
interface fc6 ms-enable enable no interface fc6 al-
fairness enable interface fc6 fan-enable enable
interface fc6 ext-credit 0 interface fc6 mfs-bundle
enable timeout 10 interface fc6 linkspeed auto interface
fc6 type gl-port ! interface fc7 enable interface fc7
ms-enable enable no interface fc7 al-fairness enable
interface fc7 fan-enable enable interface fc7 ext-credit
0 interface fc7 mfs-bundle enable timeout 10 interface
fc7 linkspeed auto interface fc7 type gl-port !
```

验证

使用本部分可确认配置能否正常运行。

[命令输出解释程序 \(仅限注册用户 \)](#) (OIT) 支持某些 **show** 命令。使用 OIT 可查看对 show 命令输出的分析。

- **show scsirouter winser2003** —显示为指定的winser2003 iSCSI配置的参数路由实例。
- **show devices** —显示所有iSCSI设备。
- 存储路由器FC的**show fcswitch nameserver**全显示全局配置信息建立接口。
- **show scsirouter winser2003 connection** —显示iSCSI winser2003 iSCI会话的发起者信息。
- **show scsirouter winser2003 stats** —显示访问和连接信息。
- **show scsirouter winser2003 host** —显示主机信息。
- **show scsirouter winser2003 host stat** —显示主机统计信息。
- **show scsirouter winser2003 target all stats** —显示关于所有目标的统计信息。
- **show ip tcp** —显示TCP会话。
- **show int ge 1** —显示GE接口。
- **show ip route** -显示Ip route信息。
- **show system** —显示系统信息、接口、IP地址、软件版本和硬件型号。

故障排除

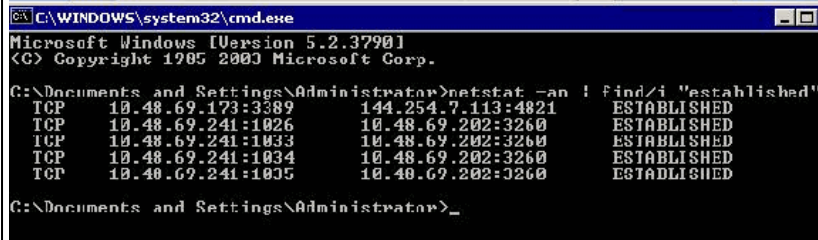
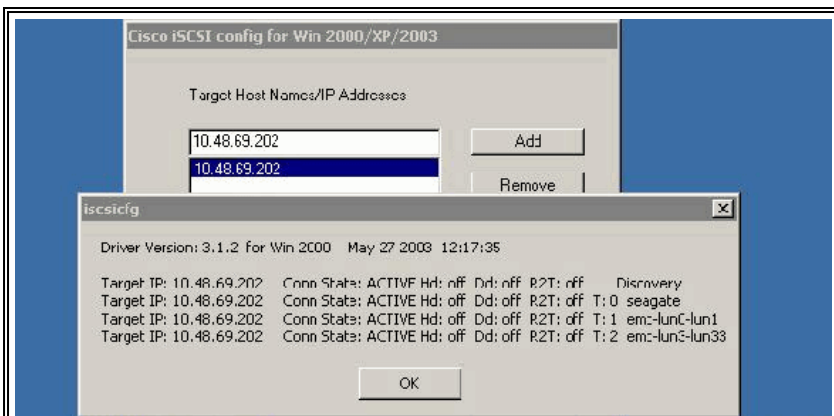
使用本部分可排除配置故障。

此故障排除信息使用这些配置：

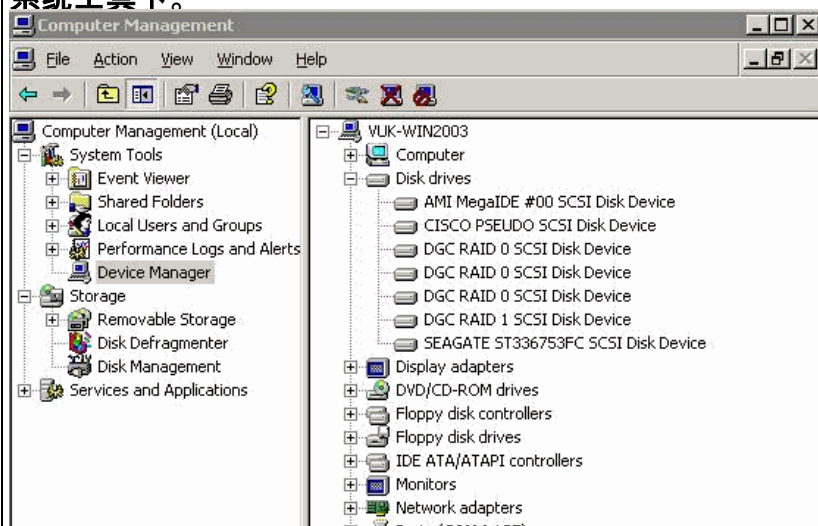
- [从Vuk \(Windows服务器显示2003\)](#)
- [从瑞塔\(SN5428\)显示](#)

从Vuk (Windows服务器显示2003)

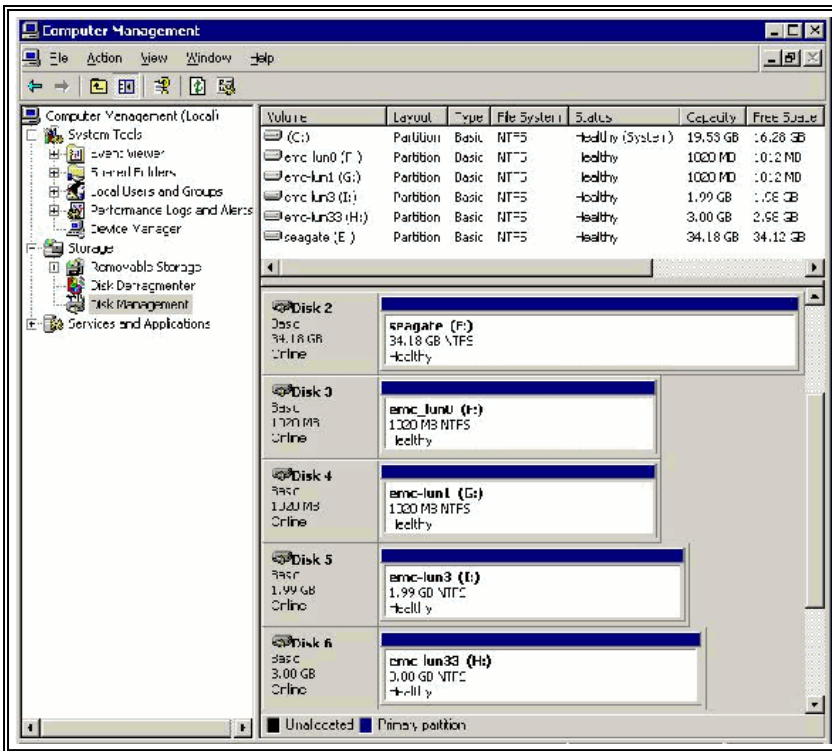
点击在思科iSCSI Config窗口的状态检查主机是否顺利地登录iSCSI目标。发出netstat - an|在line命令的find/i已有命令看到在10.48.69.202之间的TCP会话。



用鼠标右键单击在桌面的在计算机管理器的我的电脑图标和双击发现新的磁盘。单击控制台结构树的设备管理器在系统工具下。



用鼠标右键单击在桌面和双击计算机管理器的我的电脑图标管理存储设备。单击在控制台结构树的磁盘管理在存储设备下。



从瑞塔(SN5428)显示

```
*[rita]#show system System Name: rita System Deployed
For: SCSI routing Software Capacity: 59392.0 KB Free
Software Space: 30705.0 KB Configuration Capacity:
14464.0 KB Free Configuration Space: 13800.0 KB Log
Capacity: 29056.0 KB Free Log Space: 28358.0 KB Software
Version: 3.3.2-K9 Last Reset: Mon Sep 29 16:30:52 GMT
2003 Current Time: Sun Oct 5 12:24:25 GMT 2003 Time
Zone: GMT NTP Server: none Name Server: none Telnet
session timeout: none Model Number Rev Serial Number
Part Number System SN 5428-K9 00 Unit SN 800part_number
Processor Rainmaker 02 SAD061200UJ 73-7996-03 Device
IP/Netmask MAC lo0 127.0.0.1/8 mgmt 10.48.69.148/26
00:05:9b:a6:95:e0 ge1 10.48.69.202/26 02:02:3d:30:45:ca
ge2 *[rita]#show fcswitch Global attributes Value -----
----- Domain ID 1 Domain
ID lock disabled Active Zoneset iscsidoc Zoning Merge
SW2 Zoning Default All Zoning Autosave enabled
Distributed Services timeout (dstov) 5000 Fabric
Services timeout (fstov) 1000 Error Detect timeout
(edtov) 2000 Resource Allocation timeout (ratov) 10000
Buffer to Buffer Credit (interop) 12 Initiator WWP1
280000059ba695e0 Initiator WWP2 290000059ba695e0
*[rita]#show fcswitch nameserver brief Port Id Port Type
Port Number Port WWN Port IP Address -----
----- 010000
N 0 280000059ba695e0 00000000 01051e NL 5
21000004cfdb3ea7 00000000 010700 N 7 500601608802a82b
00000000 010f00 N 15 290000059ba695e0 00000000 4 entries
found *[rita]#show fcswitch nameserver all Port Id
010000 Port Type N Port Number 0 Port WWN
280000059ba695e0 Port IP Address 00000000 Sym Port Name
Sym Node Name Node WWN 100000059ba695e0 Node IP Address
00000000 Fabric Port Name 200000059ba695e1 Class of
Service 3 FC-4 Types FCP FC-4 Description (NULL) Port Id
01051e Port Type NL Port Number 5 Port WWN
21000004cfdb3ea7 Port IP Address 00000000 Sym Port Name
Sym Node Name Node WWN 20000004cfdb3ea7 Node IP Address
00000000 Fabric Port Name 200500059ba695e1 Class of
```

```

Service 3 FC-4 Types FCP FC-4 Description SEAGATE
ST336753FC (Rev. 0003) Port Id 010700 Port Type N Port
Number 7 Port WWN 500601608802a82b Port IP Address
00000000 Sym Port Name Sym Node Name Node WWN
500601601102a82b Node IP Address 00000000 Fabric Port
Name 200700059ba695e1 Class of Service 3 FC-4 Types FCP
FC-4 Description DGC RAID 0 (Rev. 0632) Port Id 010f00
Port Type N Port Number 15 Port WWN 290000059ba695e0
Port IP Address 00000000 Sym Port Name Sym Node Name
Node WWN 100000059ba695e0 Node IP Address 00000000
Fabric Port Name 200f00059ba695e1 Class of Service 3 FC-
4 Types FCP FC-4 Description (NULL) 4 entries found
*[rital]#show fcs switch linkstate database Local Node WWN
100000059ba695e1 Local Port 0 Local Port WWN
200000059ba695e1 Remote Node WWN 100000059ba695e0 Remote
Port ffffffff Remote Port WWN 280000059ba695e0 Remote
Agent Address 00000000 Remote Agent Type 0 Remote Agent
Port 0 Remote Unit Type Unknown Remote Connection Id
010000 Local Node WWN 100000059ba695e1 Local Port 15
Local Port WWN 200f00059ba695e1 Remote Node WWN
100000059ba695e0 Remote Port ffffffff Remote Port WWN
290000059ba695e0 Remote Agent Address 00000000 Remote
Agent Type 0 Remote Agent Port 0 Remote Unit Type
Unknown Remote Connection Id 010f00 Local Node WWN
100000059ba695e1 Local Port 5 Local Port WWN
200500059ba695e1 Remote Node WWN 20000004cfd33ea7 Remote
Port ffffffff Remote Port WWN 21000004cfd33ea7 Remote
Agent Address 00000000 Remote Agent Type 0 Remote Agent
Port 0 Remote Unit Type Unknown Remote Connection Id
00001e Local Node WWN 100000059ba695e1 Local Port 7
Local Port WWN 200700059ba695e1 Remote Node WWN
500601601102a82b Remote Port ffffffff Remote Port WWN
500601608802a82b Remote Agent Address 00000000 Remote
Agent Type 0 Remote Agent Port 0 Remote Unit Type
Unknown Remote Connection Id 010700 4 entries found
*[rital]#show devices Fabric Attached Devices detected
Interface WWPN PortId Device Type Lun Lunid Type Lunid -
-----
----- fc7 500601608802a82b 0x10700
Disk 0 IEEE Reg Extended
600601608802a82bda05b6a9b69d7b00 fc7 500601608802a82b
0x10700 Disk 1 IEEE Reg Extended
600601608802a82b6a660d74cb33886c fc7 500601608802a82b
0x10700 Disk 2 IEEE Reg Extended
600601608802a82bec815ba2c4430d8a fc7 500601608802a82b
0x10700 Disk 3 IEEE Reg Extended
600601608802a82be047b3be3b00e0d5 fc7 500601608802a82b
0x10700 Disk 4 IEEE Reg Extended
600601608802a82b00515b7f3d9a7bce fc7 500601608802a82b
0x10700 Disk 5 IEEE Reg Extended
600601608802a82babblae8059c0fcf0 fc7 500601608802a82b
0x10700 Disk 6 IEEE Reg Extended
600601608802a82bad9158afd2fdc747 fc7 500601608802a82b
0x10700 Disk 7 IEEE Reg Extended
600601608802a82bb1efe76c445c1697 fc7 500601608802a82b
0x10700 Disk 8 IEEE Reg Extended
600601608802a82b844f0960301efc50 fc7 500601608802a82b
0x10700 Disk 9 IEEE Reg Extended
600601608802a82baa6de20ece7acc21 fc7 500601608802a82b
0x10700 Disk 10 IEEE Reg Extended
600601608802a82b5b6667896cf2d156 fc7 500601608802a82b
0x10700 Disk 11 IEEE Reg Extended
600601608802a82ba932bd044abb3d9b fc7 500601608802a82b
0x10700 Disk 12 IEEE Reg Extended

```

```

600601608802a82bcdd996f7573f070c fc7 500601608802a82b
0x10700 Disk 13 IEEE Reg Extended
600601608802a82b0ce5ba3968cad6f0 fc7 500601608802a82b
0x10700 Disk 14 IEEE Reg Extended
600601608802a82b606eee7698fcab97 fc7 500601608802a82b
0x10700 Disk 15 IEEE Reg Extended
600601608802a82b8b58807b12fb6b12 fc7 500601608802a82b
0x10700 Disk 16 IEEE Reg Extended
600601608802a82ba12f6db0c3d6c246 fc7 500601608802a82b
0x10700 Disk 17 IEEE Reg Extended
600601608802a82b2c48c474254b26dd fc7 500601608802a82b
0x10700 Disk 32 IEEE Reg Extended
600601608802a82bba186a4022409475 fc7 500601608802a82b
0x10700 Disk 33 IEEE Reg Extended
600601608802a82b74d2429e318dff86 fc5 21000004cfdb3ea7
0x1051e Disk 0 IEEE Extended 20000004cfdb3ea7 Lun
Description Table Interface WWPN Lun Capacity Vendor
Product Serial -----
----- fc7 500601608802a82b 0
1023MB DGC RAID f60004202091 fc7 500601608802a82b 1
1023MB DGC RAID f60004202091 fc7 500601608802a82b 2
1023MB DGC RAID f60004202091 fc7 500601608802a82b 3 1GB
DGC RAID f60004202091 fc7 500601608802a82b 4 1023MB DGC
RAID f60004202091 fc7 500601608802a82b 5 1023MB DGC RAID
f60004202091 fc7 500601608802a82b 6 1023MB DGC RAID
f60004202091 fc7 500601608802a82b 7 1023MB DGC RAID
f60004202091 fc7 500601608802a82b 8 1023MB DGC RAID
f60004202091 fc7 500601608802a82b 9 1023MB DGC RAID
f60004202091 fc7 500601608802a82b 10 1023MB DGC RAID
f60004202091 fc7 500601608802a82b 11 1023MB DGC RAID
f60004202091 fc7 500601608802a82b 12 1023MB DGC RAID
f60004202091 fc7 500601608802a82b 13 1023MB DGC RAID
f60004202091 fc7 500601608802a82b 14 1023MB DGC RAID
f60004202091 fc7 500601608802a82b 15 1023MB DGC RAID
f60004202091 fc7 500601608802a82b 16 1023MB DGC RAID
f60004202091 fc7 500601608802a82b 17 1023MB DGC RAID
f60004202091 fc7 500601608802a82b 32 4GB DGC RAID
f60004202091 fc7 500601608802a82b 33 2GB DGC RAID
f60004202091 fc5 21000004cfdb3ea7 0 34GB SEAGATE
ST336753FC 3HX00Q2600007326JFF3 *[rita]#show scsirouter
winser2003 SCSI Router Information Status Codes:
A=active, I=inactive, C=create failed, D=not enabled,
S=slave CDB Reserve Pass Lun Router Stat Retry Proxy
Thru Reset Description -----
----- winser2003 A 6 disabled
no no Microsoft Windows Server 2003 SCSI Router
Authentication Information Router Authentication
Username Password -----
----- winser2003 none none none Router
ServerIf Vlan Vid IP/Netmask Secondary TCP Port SLP ----
-----
--- winser2003 gel
10.48.69.202/26 none 3260 ON Target Attribute
Information Accesslist Accesslist Router Target Status
Read-Write Read-Only Profile CRC Description -----
----- winser2003 seagate enabled any
none High prefer-off apcon1 winser2003 emc-lun0-lun1
enabled vuk_win2003 none High prefer-off emc-lun0-lun1
winser2003 emc-lun3-lun33 enabled any none High prefer-
off emc-lun3-lun33 Target Mapping Information Router
Target Mapping iSCSI Name -----
----- winser2003 seagate Tgt iqn.1987-
05.com.cisco:00.f2ad57bee553.seagate winser2003 emc-

```

```
lun0-lun1 Lun-lunid iqn.1987-
05.com.cisco:00.7cdb6d7cdb31.emc-lun0-lun1 winser2003
emc-lun3-lun33 Lun-wwpn iqn.1987-
05.com.cisco:00.438daf438d67.emc-lun3-lun33 Targets -
Target Mapped Router Target WWPN Primary WWPN Secondary
-----
----- winser2003 seagate 21000004cfdb3ea7 Targets - Lun
Mapped via Lunid Router Target Lun Lunid -----
----- winser2003 emc-lun0-
lun1 0 600601608802a82bda05b6a9b69d7b00 winser2003 emc-
lun0-lun1 1 600601608802a82b6a660d74cb33886c Targets -
Lun Mapped via WWPN Router Target Lun WWPN Primary Lun
WWPN Secondary Lun -----
----- winser2003
emc-lun3-lun33 3 500601608802a82b 3 winser2003 emc-lun3-
lun33 4 500601608802a82b 33 *[rita]#show scsirouter
winser2003 host router host name logins active last
login last disconnect winser2003 10.48.69.241 VUK-
WIN2003 4 4 Oct 05 11:14:39 1 host listed *[rita]#show
scsirouter winser2003 stats Logins Logins Target Access
Authentication Router Started Accepted Active Failures
Failures -----
----- winser2003 Oct 05 11:14:32 4 4
0 0 1 scsirouter listed *[rita]#show scsirouter
winser2003 host stats winser2003 host 10.48.69.241 alias
"VUK-WIN2003" Login info: loginsActive = 4
lastLoginTime: Sun Oct 5 11:14:39 GMT 2003
loginsTerminated = 0 lastLoginTerminatedTime:
loginsFailed = 0 lastLoginFailedTime: loginsDiscovery =
1 loginsNormal = 3 stats: RECEIVE SEND OK ERROR
0000010274 0000011971 total msgs 0000000261 0000000261
no-op msgs 0000000127 0000000127 ping msgs/rsps
0000007202 0000000000 0000007202 SCSI cmd msgs/rsps
0000002676 0000000000 0000004373 SCSI data msgs
0000000000 0000000000 0000000000 task mgt msgs/rsps
0000000008 0000000000 0000000008 login msgs/rsps
0000000000 0000000000 0000000000 text msgs/rsps
0000000000 0000000000 invalid msgs/rsps 0000000000 RTT
msgs 0000000000 async msgs bytes rcvd 0000000006ff7800
discarded 00000000 bytes sent 00000000075df218 1 host
listed *[rita]# show scsirouter winser2003 connection
CRC values (Header / Data) N = No CRC negotiated H =
Hardware CRC S = Software CRC router sid cid host:port
login ver crc rtt target access winser2003 1 71
10.48.69.241:1026 Oct 05 11:14:39 0 N/N on winser2003 3
72 10.48.69.241:1033 Oct 05 11:14:39 0 N/N off seagate
RW winser2003 4 73 10.48.69.241:1034 Oct 05 11:14:39 0
N/N off emc-lun0-lun1 RW winser2003 2 74
10.48.69.241:1035 Oct 05 11:14:39 0 N/N off emc-lun3-
lun33 RW 4 connections listed *[rita]#show scsirouter
winser2003 target all stats winser2003 target seagate:
RECEIVED TRANSMITTED count error count error 0000004082
0000002918 Messages 0000002918 0000000000 0000002918
0000000001 SCSI cmd/resp 0000000000 0000000000
0000000000 task mgt 0000000001 0000000000 0000000000
login cmd 0000000000 logout 0000000000 async event
0000001164 0000001721 data msg 000000000419c000 bytes
received 00000000 discarded 0000000004315c48 bytes
transmitted target emc-lun0-lun1: RECEIVED TRANSMITTED
count error count error 0000002742 0000002008 Messages
0000002008 0000000000 0000002008 0000000002 SCSI
cmd/resp 0000000000 0000000000 0000000000 task mgt
0000000001 0000000000 0000000000 login cmd 0000000000
logout 0000000000 async event 0000000734 0000001222 data
```

```

msg 000000000f82000 bytes received 00000000 discarded
0000000001031840 bytes transmitted target emc-lun3-
lun33: RECEIVED TRANSMITTED count error count error
0000003054 0000002276 Messages 0000002276 0000000000
0000002276 0000000002 SCSI cmd/resp 0000000000
0000000000 0000000000 task mgt 0000000001 0000000000
0000000000 login cmd 0000000000 logout 0000000000 async
event 0000000778 0000001430 data msg 0000000001ed9800
bytes received 00000000 discarded 0000000002297d90 bytes
transmitted totals for all targets: RECEIVED TRANSMITTED
count error count error 0000009878 0000007202 Messages
0000007202 0000000000 0000007202 0000000005 SCSI
cmd/resp 0000000000 0000000000 0000000000 task mgt
0000000003 0000000000 0000000000 login cmd 0000000000
logout 0000000000 async event 0000002676 0000004373 data
msg 0000000006ff7800 bytes received 00000000 discarded
000000000075df218 bytes transmitted *[rita]#show zoneset
brief Zoneset Name Active Member Count -----
----- iscsidoc true 4 *[rita]#show
zoneset iscsidoc Zone Name Member Count -----
----- spa 2 jbod 2 Zone: spa wwpn:
500601608802a82b fcalias: iscsi wwpn: 280000059ba695e0
wwpn: 290000059ba695e0 Zone: spb Zone: jbod wwpn:
21000004cfdb3ea7 fcalias: iscsi wwpn: 280000059ba695e0
wwpn: 290000059ba695e0 *[rita]#show interface gel
Operational Data Interface Stat IP/Netmask MAC Options -
-----
--- gel up 10.48.69.202/ffffffc0 02023d3045ca type
Gigabit Ethernet mtusize 1500 speed 1000000000 flags UP
BRDCST RUNNING MLTCSST signal signal detect duplex full
auto-negotiate complete flow control full SFPVendor
CISCO-AGILENT SFPVendorID A00258957 SFPPartNumber QFBR-
5790L SFPRev -5790L Configuration Data Interface MTU
Size AutoNegotiation Vlan IP/Netmask Secondary -----
-----
----- gel 1500 autodetect enabled None
*[rita]#show ip tcp Active Internet connections
(including servers) PCB Proto Recv-Q Send-Q Local
Address Foreign Address (state) -----
-----
db93608 TCP 0 0 10.48.69.202.3260 10.48.69.241.1035
ESTABLISHED db937e8 TCP 0 0 10.48.69.202.3260
10.48.69.241.1034 ESTABLISHED db932e8 TCP 0 0
10.48.69.202.3260 10.48.69.241.1033 ESTABLISHED db94008
TCP 0 0 10.48.69.202.3260 10.48.69.241.1026 ESTABLISHED
db92f28 TCP 0 0 10.48.69.202.427 0.0.0.0.0 LISTEN
db925c8 TCP 0 0 0.0.0.0.443 0.0.0.0.0 LISTEN db92528 TCP
0 0 0.0.0.0.80 0.0.0.0.0 LISTEN db92488 TCP 0 0
0.0.0.0.23 0.0.0.0.0 LISTEN db923e8 TCP 0 0 0.0.0.0.22
0.0.0.0.0 LISTEN db92028 TCP 0 0 127.0.0.1.9353
0.0.0.0.0 LISTEN db92208 TCP 0 0 10.48.69.148.427
0.0.0.0.0 LISTEN db920c8 TCP 0 0 127.0.0.1.427 0.0.0.0.0
LISTEN db91a88 TCP 0 0 0.0.0.0.3260 0.0.0.0.0 LISTEN
db918a8 TCP 0 0 0.0.0.0.21 0.0.0.0.0 LISTEN *[rita]#show
ip route Codes: C - connected, S - static, R - RIP S
0.0.0.0/0 [1/0] via 10.48.69.129, mgmt C 10.48.69.128/26
is directly connected, mgmt C 10.48.69.192/26 is
directly connected, gel C 127.0.0.1/8 is directly
connected, lo0

```

相关信息

- [Cisco iSCSI软件下载](#)
- [Windows 2000 系统的 iSCSI 驱动器常见问题](#)
- [用于 Windows 2000 的 iSCSI 驱动程序故障排除](#)
- [技术支持和文档 - Cisco Systems](#)