

在WAP561上配置安装向导

目标

“设置向导”是一组交互式说明，可指导您完成WAP561的初始配置。这些说明涵盖操作WAP561所需的基本配置。首次登录WAP时，“接入点设置向导”窗口会自动显示，但也可以随时使用。本文介绍如何使用设置向导配置WAP561。

适用设备

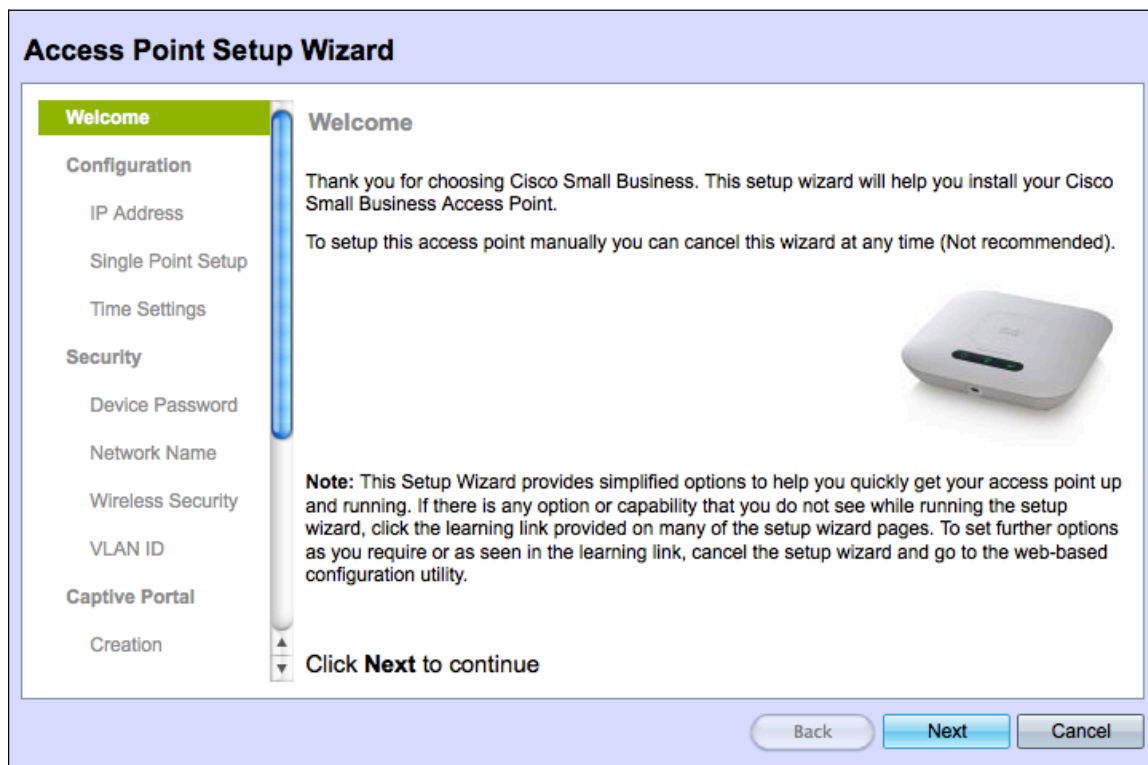
·WAP561

软件版本

•v1.0.4.2

配置设置向导

步骤1.登录Web配置实用程序并选择“运行设置向导”。系统将显示“接入点设置向导”窗口。



步骤2.单击“下一步”继续。将打开“配置设备 — IP地址”页：

Configure Device - IP Address

Select either Dynamic or Static IP address for your device.

Dynamic IP Address (DHCP) (Recommended)
 Static IP Address

Static IP Address: . . .

Subnet Mask: . . .

Default Gateway: . . .

DNS: . . .

Secondary DNS (optional): . . .

[? Learn more about the different connection types](#)

Click **Next** to continue

步骤3. 点击与要用于确定WAP的IP地址的方法对应的单选按钮。

· 动态IP地址(DHCP) (推荐) — WAP的IP地址由DCHP服务器分配。如果选择动态IP地址，请跳至步骤9。

· 静态IP地址 — 允许您为WAP创建固定(静态)IP地址。静态IP地址不会更改。

步骤4. 在 *Static IP Address* 字段中，输入WAP的IP地址。此IP地址由您创建，不应由网络中的其他设备使用。

步骤5. 在 *子网掩码* 字段中，输入IP地址的子网掩码。

步骤6. 在 *Default Gateway* 字段中，输入WAP的默认网关的IP地址。默认网关通常是分配给您的路由器的私有IP地址。

步骤7. (可选) 在 *DNS* 字段中，输入主域名系统(DNS)的IP地址。如果要访问网络外的网页，DNS服务器的IP地址应由Internet服务提供商(ISP)提供。

步骤8. (可选) 在 *Secondary DNS* 字段中，输入辅助DNS的IP地址。

步骤9. 单击“下一步”继续。此时将打开“单点设置 — 设置集群”页：

Single Point Setup – Set A Cluster

A cluster provides a single point of administration and lets you view, deploy, configure, and secure the wireless network as a single entity, rather than as a series of separate wireless devices.

Create a New Cluster

Recommended for a new deployment environment.

New Cluster Name:

AP Location:

Join an Existing Cluster

Recommended for adding new wireless access points to the existing deployment environment.

Existing Cluster Name:

AP Location:

Do not Enable Single Point Setup

Recommended for single device deployments or if you prefer to configure each device individually.

Click **Next** to continue

步骤10. 点击与要使用的群集设置对应的单选按钮。集群允许您将多个接入点(AP)配置为单个设备。如果选择不使用集群，则必须单独配置。

· 创建新集群 — 为AP创建新集群。

· 加入现有集群 — 加入网络中的现有AP集群。

· 不启用单点设置 — 不允许使用单点设置（集群）。如果选择了此选项，请跳至步骤13。

步骤11. 在Cluster Name字段中，输入现有群集名称或根据您在步骤10中的决定创建新群集名称。

步骤12. 在AP Location字段中，输入WAP的物理位置。

注意：如果单击“加入现有集群”单选按钮，WAP将根据集群配置其余设置。单击“下一步”时，将显示确认页面，询问您是否确定要加入集群。单击**Submit**以加入集群。完成配置后，单击“完成”退出“安装向导”。

步骤13. 单击“下一步”继续。将打开“配置设备 — 设置系统日期和时间”页：

Configure Device - Set System Date And Time

Enter the time zone, date and time.

Time Zone:

Set System Time: Network Time Protocol (NTP)
 Manually

NTP Server:

[? Learn more about time settings](#)

Click **Next** to continue

步骤14.从时区下拉列表中选择时区。

步骤15.点击与要用于设置WAP时间的方法对应的单选按钮。

·网络时间协议(NTP)- WAP从NTP服务器获取时间。

·手动 — 将时间手动输入到WAP。如果手动选择，请跳至步骤17。

步骤16.在NTP Server字段中，输入提供日期和时间的NTP服务器的域名。跳至步骤19。

Configure Device - Set System Date And Time

Enter the time zone, date and time.

Time Zone:

Set System Time: Network Time Protocol (NTP)
 Manually

System Date:

System Time: :

[? Learn more about time settings](#)

Click **Next** to continue

步骤17.从System Date 下拉列表中，分别选择月、日和年。

步骤18.从System Time 下拉列表中，分别选择小时和分钟。

步骤19.单击“**下一步**”继续。系统将打开“启用安全性 — 设置密码”页：

Enable Security - Set Password


The administrative password protects your access point from unauthorized access. For security reasons, you should change the access point password from its default settings. Please write this password down for future reference.

Enter a new device password:

New password needs at least 8 characters composed of lower and upper case letters as well as numbers/symbols by default.

New Password:

Confirm Password:

Password Strength Meter:  Strong

Password Complexity: Enable

[? Learn more about passwords](#)

Click **Next** to continue

步骤20.在 *New Password* 字段中，输入WAP上管理访问所需的新密码。

步骤21.在“确认密码”字段中，重新输入相同的密码。

注意：输入密码时，竖线的数量和颜色会发生变化，以指示密码强度，如下所示：

- 红色 — 密码无法满足最低复杂性要求。
- 橙色 — 密码满足最低复杂性要求，但密码强度较弱。
- 绿色 — 密码强。

步骤22. (可选) 要启用密码复杂性，请选中**启用**复选框。这要求密码至少有8个字符长，由小写字母和大写字母以及数字/符号组成。

步骤23.单击“**下一步**”继续。 将打开“配置无线电1 — 为无线网络命名”页。WAP561包含两个无线电。每个无线电都作为独立的WAP运行，可包含16个虚拟接入点。在初始配置中，您仅为每个无线电创建一个接入点。

Configure Radio 1 - Name Your Wireless Network

The name of your wireless network, known as an SSID, identifies your network so that wireless devices can find it.

Enter a name for your wireless network:

Network Name (SSID):

For example: MyNetwork

[? Learn more about network names](#)

Click **Next** to continue

步骤24.在Network Name(SSID)字段中，输入无线网络的服务集标识(SSID)。SSID是无线局域网的名称。

步骤25.单击“下一步”继续。将打开“配置无线电1 — 保护您的无线网络”页面。

Configure Radio 1 - Secure Your Wireless Network

Select your network security strength.

- Best Security (WPA2 Personal - AES)
Recommended for new wireless computers and devices that support this option.
Older wireless devices might not support this option.
- Better Security (WPA Personal - TKIP/AES)
Recommended for older wireless computers and devices that might not support WPA2.
- No Security (Not recommended)

Enter a security key with 8-63 characters.

 Strong

Show Key as Clear Text

[? Learn more about your network security options](#)

Click **Next** to continue

步骤26.点击与要应用于无线网络的网络安全对应的单选按钮。

·最佳安全 (WPA2个人 — AES) — WPA2是Wi-Fi无线网络的WPA安全和访问控制技术的第二版，包括AES-CCMP加密。此协议版本提供符合IEEE 802.11i标准的最佳安全性。网络上的所有客户端站点都需要能够支持WPA2。WPA2不允许使用具有已知限制的协议TKIP (临时密钥完整性协议) 。

·更好的安全性 (WPA个人 — TKIP/AES) — WPA个人是Wi-Fi联盟IEEE 802.11i标准，包

括AES-CCMP和TKIP加密。当存在支持原始WPA但不支持较新WPA2的较旧无线设备时，它提供安全性。

·无安全性 — 无线网络不需要密码，任何人都可以访问。如果选择No Security，请跳至步骤29。

步骤27.在Security Key字段中，输入网络的密码。

步骤28. (可选) 要在键入时查看密码，请选中Show Key as Clear Text复选框。

步骤29.单击“下一步”继续。将打开“配置无线电1 — 为无线网络分配VLAN ID”页面。

Configure Radio 1 - Assign The VLAN ID For Your Wireless Network

By default, the VLAN ID assigned to the management interface for your access point is 1, which is also the default untagged VLAN ID. If the management VLAN ID is the same as the VLAN ID assigned to your wireless network, then the wireless clients associated with this specific wireless network can administer this device. If needed, an access control list (ACL) can be created to disable administration from wireless clients.

Enter a VLAN ID for your wireless network:

VLAN ID: (Range: 1 - 4094)

[? Learn more about vlan ids](#)

Click **Next** to continue

步骤30.在VLAN ID字段中，输入您希望WAP所属的VLAN的ID号。

注意：VLAN ID应与连接到WAP的远程设备端口上支持的其中一个VLAN ID匹配。

步骤31.单击“下一步”继续。系统将打开“配置无线电2 — 为无线网络命名”页：

Configure Radio 2 - Name Your Wireless Network

The name of your wireless network, known as an SSID, identifies your network so that wireless devices can find it.

Enter a name for your wireless network:

Network Name (SSID):

For example: MyNetwork

[? Learn more about network names](#)

Click **Next** to continue

步骤32.在Network Name(SSID)字段中，输入无线网络的服务集标识(SSID)。

步骤33.单击“下一步”继续。将打开“配置无线电2 — 保护您的无线网络”页面。

Configure Radio 2 - Secure Your Wireless Network

Select your network security strength.

- Best Security (WPA2 Personal - AES)
Recommended for new wireless computers and devices that support this option.
Older wireless devices might not support this option.
- Better Security (WPA Personal - TKIP/AES)
Recommended for older wireless computers and devices that might not support WPA2.
- No Security (Not recommended)

Enter a security key with 8-63 characters.

.....

 Strong

Show Key as Clear Text

[? Learn more about your network security options](#)

Click **Next** to continue

步骤34.点击与要应用于无线网络的网络安全对应的单选按钮。

·最佳安全 (WPA2个人 — AES) — 提供最佳安全性，如果您的无线设备支持此选项，则建议使用。

·更好的安全性 — 当有较旧的无线设备不支持WPA2时提供安全性。

·无安全性 — 无线网络不需要密码，任何人都可以访问。如果选择No Security，请跳至步骤37。

步骤35.在Security Key(安全密钥)字段中，输入网络的密码。

步骤36. (可选) 要在键入时查看密码，请选中**Show Key as Clear Text**复选框以在键入时查看密码。

步骤37.单击“**下一步**”继续。将打开“**配置无线电2 — 为无线网络分配VLAN ID**”页面。

Configure Radio 2 - Assign The VLAN ID For Your Wireless Network

By default, the VLAN ID assigned to the management interface for your access point is 1, which is also the default untagged VLAN ID. If the management VLAN ID is the same as the VLAN ID assigned to your wireless network, then the wireless clients associated with this specific wireless network can administer this device. If needed, an access control list (ACL) can be created to disable administration from wireless clients.

Enter a VLAN ID for your wireless network:

VLAN ID: (Range: 1 - 4094)

[? Learn more about vlan ids](#)

Click **Next** to continue

步骤38.在VLAN ID字段中，输入您希望WAP所属的VLAN的ID号。

注意：VLAN ID应与连接到WAP的远程设备端口上支持的其中一个VLAN ID匹配。

步骤39.单击“**下一步**”继续。将打开“**启用强制网络门户 — 创建您的访客网络**”页：

Enable Captive Portal - Create Your Guest Network

Use Captive Portal to set up a guest network, which means that wireless users need to be authenticated before they can access the Internet. For example, a hotel can create a guest network to redirect new wireless users to a page for authentication.

Do you want to create your guest network now?

Yes
 No, thanks.

[? Learn more about captive portal guest networks](#)

Click **Next** to continue

步骤40.如果要创建访客网络，请单击“是”单选按钮。访客网络要求用户在使用互联网之前进

行身份验证。不需要访客网络。否则，如果不想创建访客网络并跳至步骤54，请单击**否**单选按钮。

步骤41.单击“**下一步**”继续。将打开“启用强制网络门户 — 为访客网络命名”页：

Enable Captive Portal - Name Your Guest Network

Your guest network needs a new name, known as an SSID. The name identifies your guest network so that wireless users can find it.

Enter a name for your guest network:

Radio: Radio 1
 Radio 2

Guest Network name:
For example: MyGuestNetwork

[? Learn more about network names](#)

Click **Next** to continue

步骤42.点击与您要放置访客网络的无线电对应的单选按钮。

步骤43.在Guest Network *name*字段中，输入访客网络的SSID。

步骤4.单击“**下一步**”继续。将打开“启用强制网络门户 — 保护您的访客网络”页：

Enable Captive Portal - Secure Your Guest Network


Select your guest network security strength.

Best Security (WPA2 Personal - AES)
Recommended for new wireless computers and devices that support this option.
Older wireless devices might not support this option.

Better Security (WPA Personal - TKIP/AES)
Recommended for older wireless computers and devices that might not support WPA2.

No Security (Not recommended)

Enter a security key with 8-63 characters.

 Strong

Show Key as Clear Text

[? Learn more about your network security options](#)

Click **Next** to continue

步骤45.点击与要应用到访客网络的网络安全对应的单选按钮。

·最佳安全 (WPA2个人 — AES) — 提供最佳安全性，如果您的无线设备支持此选项，则建议使用。

·更好的安全性 — 当存在不支持WPA2的较旧无线设备时提供安全性

·无安全性 — 无线网络不需要密码，任何人都可以访问。如果选择No Security，请跳至步骤48。

步骤46.在Security Key 字段中，输入访客网络的密码。

步骤47. (可选) 要在键入时查看密码，请选中Show Key as Clear Text复选框。

步骤48.单击“下一步”继续。将打开“启用强制网络门户 — 分配VLAN ID”页面：

Enable Captive Portal - Assign The VLAN ID

We strongly recommend that you assign different VLAN ID for your guest network than the management VLAN ID. By doing that, your guest will have no access to your private network.

Enter a VLAN ID for your guest network:

VLAN ID: (Range: 1 - 4094)

[? Learn more about vlan ids](#)

Click **Next** to continue

步骤49.在VLAN ID字段中，输入您希望访客网络所属的VLAN的ID号。

注意：VLAN ID应与连接到WAP的远程设备端口上支持的其中一个VLAN ID匹配。

步骤50.单击“下一步”继续。将打开“启用强制网络门户 — 启用重定向URL”页：

Enable Captive Portal - Enable Redirect URL

If you enable a redirect URL, when new wireless users have completed the authentication process, they can be redirected to an alternate startup page.

Enable Redirect URL

Redirect URL :

[? Learn more about redirect urls](#)

Click **Next** to continue

第51步。(可选) 要将无线用户重新定向到登录访客网络后的网页，请选中**Enable Redirect URL** 复选框。如果未选中Enable复选框，请跳至步骤54。

步骤52.在重定向URL字段中，输入用户登录访客网络后要重定向到的网页。

步骤53.单击“下一步”继续。系统将打开“摘要 — 确认您的设置”页：

Summary - Confirm Your Settings

Please review the following settings and ensure the data is correct.

Radio 1

Network Name (SSID):	Network A
Network Security Type:	plain-text
Security Key:	
VLAN ID:	1

Radio 2

Network Name (SSID):	Network B
Network Security Type:	plain-text
Security Key:	
VLAN ID:	2

Captive Portal (Guest Network) Summary

Guest Network Radio:	Radio 2
----------------------	---------

Click **Submit** to enable settings on your Cisco Small Business Access Point


第54步。(可选) 如果要编辑所做的设置，请单击**Back**。

第55步。(可选) 如果要退出安装向导并撤消所做的所有更改，请单击**取消**。


步骤56.检查网络和访客网络设置。单击**Submit**以启用WAP上的设置。当WAP启用设置时，将显示加载条。完成WAP后，将打开“完成”页：

注意：仅当您单击“确认设置”(Confirm Your Settings)页面上的提交(*Submit*)时，第56步才适用。

Device Setup Complete

 Congratulations, your access point has been set up successfully. We strongly recommend that you save these settings by writing them down or by copying and pasting them into a text document. You will need these settings later when you add other wireless computers or devices to your network.

Cluster Name:	ciscosb-cluster
Network Name (SSID):	ciscosb
Network Security Type:	plain-text
Security Key:	



Note: To configure WPS, Click "Run WPS" on the Getting Started page, under Initial Setup.

Click **Finish** to close this wizard.

步骤57.单击“完成”退出“安装向导”。