

# 在WAP121和WAP321接入点的设置向导配置

## 目标

设置向导是使用帮助与WAP设备的初始配置的一个内置的功能。设置向导简化非常配置设置。设置向导指南的逐步进程您通过配置必要所有的的基本设置运行WAP设备。

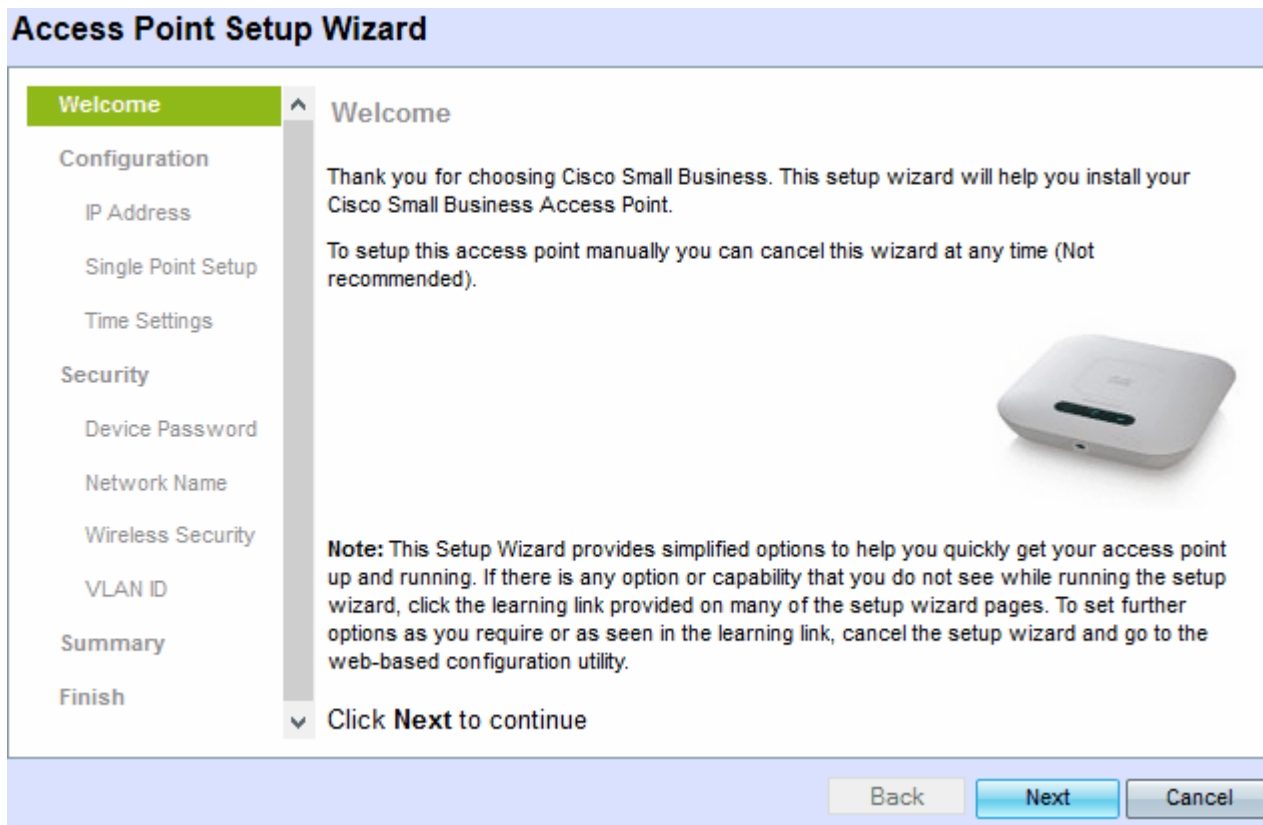
此条款说明如何配置WAP121和WAP321有设置向导的设备。

## 可适用的设备|固件版本

- WAP121|1.0.3.4 ([新的下载](#))
- WAP321|1.0.3.4 ([新的下载](#))

## 设置向导

步骤1.登陆到访问接入节点配置工具并且选择**运行设置向导**。接入点**设置向导**窗口出现：



步骤2.单击在**旁边**继续。配置设备- **IP Address**窗口出现。

## Access Point Setup Wizard

**Welcome**

**Configuration**

- IP Address
- Single Point Setup
- Time Settings

**Security**

- Device Password
- Network Name
- Wireless Security
- VLAN ID

**Summary**

**Finish**

### Configure Device - IP Address

Select either Dynamic or Static IP address for your device.

Dynamic IP Address (DHCP) (Recommended)

Static IP Address

Static IP Address:  .  .  .

Subnet Mask:  .  .  .

Default Gateway:  .  .  .

DNS:  .  .  .

Secondary DNS (optional):  .  .  .

[? Learn more about the different connection types](#)

Click **Next** to continue

步骤3. 点击对应于方法您要使用确定WAP的IP地址的单选按钮。

- 动态IP地址(DHCP) (建议使用) - WAP的IP地址由DCHP服务器分配。
- 静态IP地址-允许您创建WAP的一个已修复(静态) IP地址。静态IP地址不更改。

**注意：**如果动态IP地址然后单击，请跳到步骤9。

## Access Point Setup Wizard

**Welcome**

**Configuration**

- IP Address
- Single Point Setup
- Time Settings

**Security**

- Device Password
- Network Name
- Wireless Security
- VLAN ID

**Summary**

**Finish**

### Configure Device - IP Address

Select either Dynamic or Static IP address for your device.

Dynamic IP Address (DHCP) (Recommended)

Static IP Address

Static IP Address:  .  .  .

Subnet Mask:  .  .  .

Default Gateway:  .  .  .

DNS:  .  .  .

Secondary DNS (optional):  .  .  .

[? Learn more about the different connection types](#)

Click **Next** to continue

步骤4. 在静态IP地址字段输入WAP的IP地址。此IP地址由您创建并且不应该由另一个设备使用在网络。

步骤5.在子网掩码字段输入IP地址的子网掩码。

步骤6.在默认网关字段输入默认网关的IP地址WAP的。默认网关通常是私有IP地址分配到您的路由器。

应该由您的互联网服务提供商给步骤7. (可选)，如果在DNS领域要访问网页在您的网络回车外面主要的域名系统(DNS)的IP地址，DNS服务器的IP地址。

步骤8. (可选)在辅助DNS字段，输入辅助DNS的IP地址。

步骤9.其次单击。单点设置--设置集群窗口出现。

**Access Point Setup Wizard**

**Single Point Setup -- Set A Cluster**

A cluster provides a single point of administration and lets you view, deploy, configure, and secure the wireless network as a single entity, rather than as a series of separate wireless devices.

**Create a New Cluster**  
Recommended for a new deployment environment.  
New Cluster Name:   
AP Location:

**Join an Existing Cluster**  
Recommended for adding new wireless access points to the existing deployment environment.  
Existing Cluster Name:   
AP Location:

**Do not Enable Single Point Setup**  
Recommended for single device deployments or if you prefer to configure each device individually.

Click **Next** to continue

Back Next Cancel

步骤10.点击您希望使用的希望的单选按钮。选项是：

- 创建一新的集群-用于创建一新的集群巩固无线网络作为单个实体。
  - 新建的集群名称-在新的集群名称名称字段输入集群的名称。
  - AP位置-输入AP的位置在AP Location字段的。
- 参加现有的集群-使用的添加对现有的集群的一新设备。
  - 现有的集群名称-输入在现有的集群Name字段已经创建集群的名称。
  - AP位置-输入AP的位置在AP Location字段的。
- 请勿启用单点设置-用于禁用设立和配置的集群单个所有设备。

步骤11.单击在**旁边**继续。配置设备-设置系统日期和时间窗口出现。

## Access Point Setup Wizard

The screenshot shows the 'Access Point Setup Wizard' interface. On the left is a navigation pane with the following sections: Welcome, Configuration (with sub-items 'IP Address' and 'Single Point Setup'), Time Settings (highlighted in green), Security (with sub-items 'Device Password', 'Network Name', 'Wireless Security', and 'VLAN ID'), Summary, and Finish. The main content area is titled 'Configure Device - Set System Date And Time' and contains the following elements: a heading 'Configure Device - Set System Date And Time', a prompt 'Enter the time zone, date and time.', a 'Time Zone:' dropdown menu currently set to 'USA (Pacific)', a 'Set System Time:' section with two radio buttons: 'Network Time Protocol (NTP)' (which is selected) and 'Manually', and an 'NTP Server:' text input field containing '0. .pool.ntp.org'. Below the input fields is a blue link with a question mark icon: '? Learn more about time settings'. At the bottom of the main area is a prompt: 'Click **Next** to continue'. At the very bottom of the wizard are three buttons: 'Back', 'Next', and 'Cancel'.

步骤12。从时间区域下拉列表选择时间区域。

步骤13。点击对应与方法您希望使用设置WAP的时期的单选按钮。

- 网络时间协议(NTP) - WAP从Ntp server得到时间。
- 时间手工手工进入到WAP。

**注意：**如果然后手工单击，请跳到步骤15。

步骤14。输入在Ntp server字段提供日期和时间Ntp server的域名。

## Access Point Setup Wizard

**Welcome**

**Configuration**

- ✓ IP Address
- ✓ Single Point Setup
- Time Settings**

**Security**

- Device Password
- Network Name
- Wireless Security
- VLAN ID

**Summary**

**Finish**

### Configure Device - Set System Date And Time

Enter the time zone, date and time.

Time Zone:

Set System Time:  Network Time Protocol (NTP)  
 Manually

System Date:

System Time:  :

[? Learn more about time settings](#)

Click **Next** to continue

步骤15。如果手工选择，则从系统日期下拉列表，请选择各自月、天和年。

步骤16。如果手工选择，请分别从系统时间下拉列表选择小时和分钟。

步骤17。单击 **Next**。Enable (event)安全- Set password窗口出现。

## Access Point Setup Wizard

**Welcome**

**Configuration**

- ✓ IP Address
- ✓ Single Point Setup
- ✓ Time Settings
- Security**

**Device Password**

- Network Name
- Wireless Security
- VLAN ID

**Summary**

**Finish**

### Enable Security - Set Password

The administrative password protects your access point from unauthorized access. For security reasons, you should change the access point password from its default settings. Please write this password down for future reference.

Enter a new device password:

New password needs at least 8 characters composed of lower and upper case letters as well as numbers/symbols by default.

New Password:

Confirm Password:

Password Strength Meter:  Below Minimum

Password Complexity:  Enable

[? Learn more about passwords](#)

Click **Next** to continue

步骤18。输入为在WAP的管理访问要求在新密码字段的新密码。

步骤19。重新输入同一个密码在确认密码字段。

密码优点公尺领域显示更改的竖线，当您输入密码。可用的选项是：

- 红最低的密码复杂性需求没有符合。
- 橙色-最低的密码复杂性需求符合，但是密码优点弱。
- 格林-最低的密码复杂性需求符合，并且密码优点强。

步骤20。(可选)对特权密码复杂性，请检查**Enable**复选框。这要求密码是至少8个字符长和组成由更低和大写字母和编号/符号。

步骤21。点击下一步继续。*Enable (event)安全-给出您的无线网络*窗口出现。



步骤22。在网络名(SSID)字段进入无线网络的服务集标识(SSID)。SSID是无线局域网的名称。

步骤23。单击 **Next**。*Enable (event)安全-巩固您的无线网络*窗口出现。

## Access Point Setup Wizard

The screenshot shows the 'Access Point Setup Wizard' interface. On the left is a navigation pane with sections: Welcome, Configuration (with sub-items: IP Address, Single Point Setup, Time Settings), Security (with sub-items: Device Password, Network Name), **Wireless Security** (highlighted), VLAN ID, Summary, and Finish. The main content area is titled 'Enable Security - Secure Your Wireless Network'. It instructs the user to 'Select your network security strength.' and offers three radio button options: 'Best Security (WPA2 Personal - AES)' (selected), 'Better Security (WPA Personal - TKIP/AES)', and 'No Security (Not recommended)'. Below these is a text input field for a security key with a strength indicator showing 'Below Minimum'. There is a checkbox for 'Show Key as Clear Text' and a link to 'Learn more about your network security options'. At the bottom are 'Back', 'Next', and 'Cancel' buttons.

步骤24。点击对应以网络安全您希望应用到您的无线网络的单选按钮。

- 最好的安全(个人的WPA2 - AES) -提供最好的安全和推荐您的无线设备是否支持此选项。WPA2个人用途高级加密标准(AES)和一预先共享密钥(PSK)在客户端中。它使用新的加密密钥使困难破解的每会话。
- 更加好的安全(个人的WPA - TKIP/AES) -提供安全，当有不支持WPA2的更旧的无线设备。WPA个人用途高级加密标准(AES)和临时密钥完整性协议(TKIP)。它使用IEEE 802.11i wi-fi标准。
- 没有安全(不建议使用) -无线网络不要求密码，并且可以由任何人访问。

**注意：**如果安全然后没有单击，请跳到步骤27。

步骤25。在安全密钥关键字域输入您的网络的密码。相邻，优点公尺显示输入的密码的优点。更加强的密码提供高安全性。

步骤26。(可选)发现密码，您键入，请检查显示密钥作为明文复选框。

步骤27。单击 **Next**。Enable (event)安全-为您的无线网络窗口分配VLAN ID出现。

## Access Point Setup Wizard

**Welcome**

**Configuration**

- ✓ IP Address
- ✓ Single Point Setup
- ✓ Time Settings

**Security**

- ✓ Device Password
- ✓ Network Name
- ✓ Wireless Security

**VLAN ID**

**Summary**

**Finish**

### Enable Security - Assign The VLAN ID For Your Wireless Network

By default, the VLAN ID assigned to the management interface for your access point is 1, which is also the default untagged VLAN ID. If the management VLAN ID is the same as the VLAN ID assigned to your wireless network, then the wireless clients associated with this specific wireless network can administer this device. If needed, an access control list (ACL) can be created to disable administration from wireless clients.

Enter a VLAN ID for your wireless network:

VLAN ID:  (Range: 1 - 4094)

[Learn more about vlan ids](#)

Click **Next** to continue

Back Next Cancel

步骤28。输入网络的VLAN ID在VLAN ID字段。如果管理VLAN同VLAN一样分配到无线网络，您能管理设备。您能也使用访问控制列表(ACL)禁用从无线客户端的管理。

步骤29。单击 **Next**。摘要-确认您Settings窗口出现。

## Access Point Setup Wizard

**Welcome**

**Configuration**

- ✓ IP Address
- ✓ Single Point Setup
- ✓ Time Settings

**Security**

- ✓ Device Password
- ✓ Network Name
- ✓ Wireless Security
- ✓ VLAN ID

**Summary**

**Finish**

### Summary - Confirm Your Settings

Please review the following settings and ensure the data is correct.

|                        |                     |
|------------------------|---------------------|
| Network Name (SSID):   | networkname         |
| Network Security Type: | WPA2 Personal - AES |
| Security Key:          | *****               |
| VLAN ID:               | 45                  |

Note: The AP Radio will be enabled after clicking Submit.

Click **Submit** to enable settings on your Cisco Small Business Access Point

Back Submit Cancel

步骤30。(可选)，如果希望编辑设置您做，点击上一步。

步骤31。(可选)，如果希望退出设置向导和取消您做的所有变动，请点击**取消**。

步骤32。查看网络设置。单击**提交**启用在WAP的设置。—加载柱状图将出现，WAP启用您的设置



。当WAP完成时，设备设置完整窗口出现。


### Access Point Setup Wizard

- Welcome
- Configuration
  - ✓ IP Address
  - ✓ Single Point Setup
  - ✓ Time Settings
- Security
  - ✓ Device Password
  - ✓ Network Name
  - ✓ Wireless Security
  - ✓ VLAN ID
- Summary
- Finish**

#### Device Setup Complete

✓ Congratulations, your access point has been set up successfully. We strongly recommend that you save these settings by writing them down or by copying and pasting them into a text document. You will need these settings later when you add other wireless computers or devices to your network.

|                        |                     |
|------------------------|---------------------|
| Cluster Name:          | New                 |
| Network Name (SSID):   | networkname         |
| Network Security Type: | WPA2 Personal - AES |
| Security Key:          | *****               |



Note: To configure WPS, Click "Run WPS" on the Getting Started page, under Initial Setup.

Click **Finish** to close this wizard.

Back Finish Cancel

步骤33。点击芬通社退出设置向导。