

HTTP/HTTPS安全套接字层SSL认证的服务配置和管理在WAP121和WAP321接入点的

客观

接入点可以通过HTTP和HTTP安全的(HTTPS)连接被管理，当配置时HTTP/HTTPS服务器。安全的超文本传输协议(HTTPS)比HTTP是一更加安全的传输协议。当其他使用HTTPS时，一些Web浏览器使用HTTP。接入点必须有使用一个有效SSL的认证HTTPS服务。SSL认证是一个数字式地签名的证书由允许Web浏览器有与Web服务器的安全的加密的通信的认证机关。

此条款说明如何配置在WAP121和WAP321接入点的HTTP/HTTPS服务。

可适用的设备

- WAP121
- WAP321

软件版本

- 1.0.3.4

HTTP/HTTPS服务

步骤1.登陆到Web配置工具并且选择Administration > HTTP/HTTPS服务。HTTP/HTTPS服务页打开：

HTTP/HTTPS Service

Global Settings

Maximum Sessions: (Range: 1-10, Default: 5)

Session Timeout: Minute (Range: 1-60, Default: 10)

HTTP Service

HTTP Server: Enable

HTTP Port: (Range: 1025-65535, Default: 80)

Redirect HTTP to HTTPS:

HTTPS Service

HTTPS Server: Enable

HTTPS Port : (Range: 1025-65535, Default: 443)

步骤2.输入在最大会话字段包括HTTP和HTTPS会话在同时使用Web会话的最大数量。每次用户注册到设备，会话被创建。如果最大会话那么被到达尝试登录到有HTTP或HTTPS服务的设备的下个用户被拒绝。

步骤3.以分钟输入最大时间一个非激活用户在Session Timeout字段保持注册对AP Web接口。

Global Settings

Maximum Sessions: (Range: 1-10, Default: 5)

Session Timeout: Minute (Range: 1-60, Default: 10)

HTTP Service

HTTP Server: Enable

HTTP Port: (Range: 1025-65535, Default: 80)

Redirect HTTP to HTTPS:

HTTPS Service

HTTPS Server: Enable

HTTPS Port : (Range: 1025-65535, Default: 443)

第 4 步：检查在HTTP服务器领域的Enable复选框对enable (event) Web访问通过HTTP。

Note:如果HTTP服务器是失效的，使用HTTP的所有当前连接将是断开的。

步骤5.输入端口号使用HTTP连接在Port字段的HTTP。端口号范围自1025到65535。

第6.步(可选)重定向管理在HTTP端口的HTTP访问企图对HTTPS端口，检查**重定向HTTP到HTTPS**复选框。只有当HTTP访问是失效的时，此字段是可用的。

第7步：检查HTTPS服务器的**Enable**复选框对enable (event) Web访问通过HTTPS。

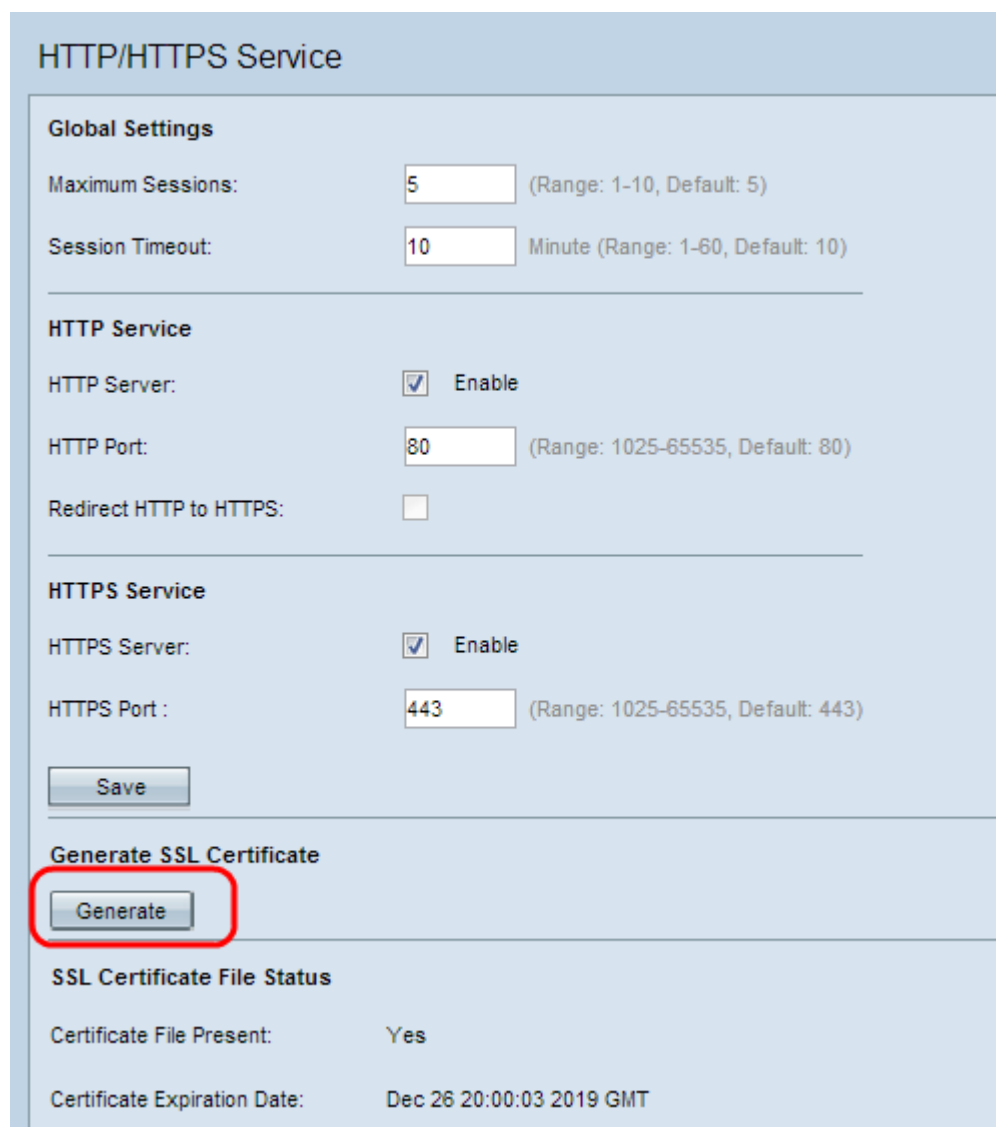
Note:如果HTTPS服务器是失效的，使用HTTPS的所有当前连接将是断开的。

步骤8.输入端口号使用HTTPS连接在Port字段的HTTPS。端口号范围自1025到65535。

步骤9.点击“**Save**”保存设置。

SSL认证的生成

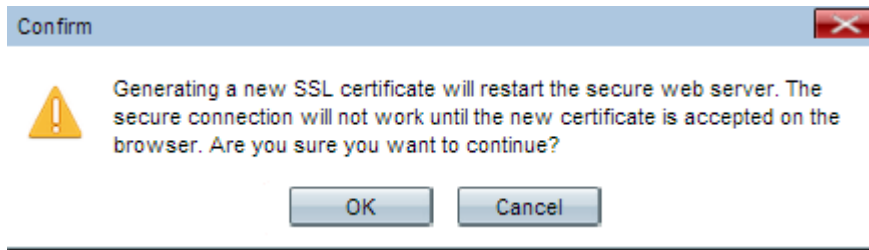
在AP获取了一个IP地址后，一个新的HTTP SSL认证的生成安全的Web服务器的应该完成。这保证普通的名字对于认证匹配AP的IP地址。一个新的SSL认证的生成重新启动安全的Web服务器。安全连接不工作，直到新证书在浏览器被接受。遵从如下所示的步骤生成SSL认证。



The screenshot shows the 'HTTP/HTTPS Service' configuration interface. It is divided into several sections:

- Global Settings:** Includes 'Maximum Sessions' (set to 5) and 'Session Timeout' (set to 10 Minute).
- HTTP Service:** 'HTTP Server' is checked and 'Enable'. 'HTTP Port' is set to 80. 'Redirect HTTP to HTTPS' is unchecked.
- HTTPS Service:** 'HTTPS Server' is checked and 'Enable'. 'HTTPS Port' is set to 443.
- Buttons:** A 'Save' button is located below the HTTPS Service section. A 'Generate' button is located below the 'Generate SSL Certificate' section and is highlighted with a red circle.
- SSL Certificate File Status:** Shows 'Certificate File Present: Yes' and 'Certificate Expiration Date: Dec 26 20:00:03 2019 GMT'.

步骤1.点击**生成**生成一个新的SSL认证。警报消息出现。



步骤2.点击OK键继续与SSL认证的生成。

A light blue web interface for managing SSL certificates. It is divided into three sections. The first section, "SSL Certificate File Status", shows: "Certificate File Present: Yes", "Certificate Expiration Date: Dec 26 20:00:03 2019 GMT", and "Certificate Issuer Common Name: CN=192.168.1.245". The second section, "Download SSL Certificate (From Device to PC)", has "Download Method:" with radio buttons for "HTTP/HTTPS" (selected) and "TFTP", and a "Download" button. The third section, "Upload SSL Certificate (From PC to Device)", has "Upload Method:" with radio buttons for "HTTP/HTTPS" (selected) and "TFTP", a "File Name:" field with a "Choose File" button and "No file chosen" text, and an "Upload" button.

SSL证书文件状态地区显示以下信息：

- 当前证书文件—指示是否HTTP SSL证书文件存在。默认为否。
- 证书到期到日期—显示HTTP SSL认证的有效期。
- 认证发布者普通的名字—显示认证发布者的普通的名字。

下载SSL认证

Download SSL Certificate (From Device to PC)

Download Method: HTTP/HTTPS
 TFTP

Upload SSL Certificate (From PC to Device)

Upload Method: HTTP/HTTPS
 TFTP

File Name: No file chosen

步骤1. 点击从下载方法单选按钮的适当的SSL证书文件在下载SSL认证(从设备到PC)地区。

- HTTP/HTTPS —，如果SSL认证将从Web服务器，下载请点击此单选按钮。
- TFTP —，如果SSL认证将从TFTP server，下载请点击此单选按钮。

Note:如果HTTP/HTTPS在上一步，点击请跳到第4步。

Download SSL Certificate (From Device to PC)

Download Method: HTTP/HTTPS
 TFTP

File Name: (Range: 1 - 128 Characters)

TFTP Server IPv4 Address:

Step 2.如果TFTP在第2步点击，则请输入文件名在名字段。

步骤3. 送进TFTP服务器地址在TFTP server IPv4地址域。

步骤4. 点击下载下载证书文件。

加载SSL认证

遵从如下所示的步骤加载SSL认证。

Download SSL Certificate (From Device to PC)

Download Method: HTTP/HTTPS
 TFTP

Upload SSL Certificate (From PC to Device)

Upload Method: HTTP/HTTPS
 TFTP

File Name: No file chosen

步骤1.点击适当的加载方法单选按钮在加载SSL认证(从PC到设备)地区。

- HTTP/HTTPS — ，如果SSL认证将用Web服务器，加载请点击此单选按钮。
- TFTP — ，如果SSL认证将加载与TFTP server，请点击此单选按钮。

Note:如果TFTP在上一步，点击请跳到第4步。

Step 2.如果HTTP/HTTPS点击，则请点击**选择**根据您的浏览器或**Browse**的文件为文件访问。

Upload SSL Certificate (From PC to Device)

Upload Method: HTTP/HTTPS
 TFTP

File Name: Example_SSLCertificate_FileName.crt

步骤3.点击**加载**加载被选择的文件。跳到最后步骤，这些步骤只适用于TFTP。

Upload SSL Certificate (From PC to Device)

Upload Method: HTTP/HTTPS
 TFTP

File Name:

TFTP Server IPv4 Address:

第 4 步：如果TFTP在第2步点击，则请输入文件名在名字段。

步骤5.送进TFTP服务器地址在TFTP server IPv4地址域。

步骤6.点击**加载**加载证书文件。