

目录

[相关的思科支持社区讨论](#)

VMWareFW/RAID

VMWare(FW)RAID

/

UCSC-C3160 UCSC-C220-M4s UCSC-C220-M4L UCSC-C240-M4S UCSC-C240-M4SX UCSC-C240-M4S2 UCSC-C240-M4L UCSC-C22-M3S UCSC-C22-M3L UCSC-C24-M3S UCSC-C24-M3S2 UCSC-C24-M3L UCSC-C460-M4

UCS-RAID-9266-8i UCS-RAID-9266CV-8i UCS-RAID-9271-8i UCS-RAID-9271CV-8i UCS-RAID-9285CV-E UCS-RAID-9286CV-8E UCSC-MRAID-12G UCSC-MRAID12G-512 UCSC-MRAID12G-1GB UCSC-MRAID12G-2GB UCSC-MRAID12G-4GB UCSC-SAS9300-8E UCSC-C3X60-R4GB UCSC-C3X60-HBA UCSC-C3X60-R1GB

2.0(4)2.0(3)(2.0(3)2.0(6f))

C220/C240 M39271CV-8i/9271-8i

/ VMWareFW/VMWareVSpere:

The screenshot shows the VMware vSphere configuration page for a host. The top navigation bar includes tabs for Getting Started, Summary, Virtual Machines, Resource Allocation, Performance, Configuration, Tasks & Events, Alarms, and Permissions. The Configuration Issues section is highlighted in yellow and contains two messages: "No datastores have been configured" and "No core dump target has been configured. Host core dumps cannot be saved." Below this are three main sections: General, Resources, and Fault Tolerance. The General section lists host details such as Manufacturer (Cisco Systems Inc), Model (UCSC-C220-M3S), CPU Cores (16 CPUs x 1.999 GHz), Processor Type (Intel(R) Xeon(R) CPU E5-2650 0 @ 2.00GHz), License (VMware vSphere 5 Enterprise Plus - Licensed for 2 phys...), Processor Sockets (2), Cores per Socket (8), Logical Processors (32), Hyperthreading (Active), Number of NICs (4), State (Connected), Virtual Machines and Templates (0), vMotion Enabled (No), VMware EVC Mode (Disabled), vSphere HA State (N/A), and Host Configured for FT (No). The Resources section shows CPU usage (45 MHz) and Memory usage (2410.00 MB) with their respective capacities. It also includes a Storage table with columns for Storage, Status, and Drive Type, and a Network table with columns for Network, Type, and Size. The Fault Tolerance section displays the Fault Tolerance Version (5.0.0-5.0.0-5.0.0) and counts for Total Primary VMs, Powered On Primary VMs, Total Secondary VMs, and Powered On Secondary VMs.

Storage	Status	Drive Type

Network	Type	Size
VM Network	Standard port group	

Fault Tolerance	
Fault Tolerance Version:	5.0.0-5.0.0-5.0.0
Refresh Virtual Machine Counts	
Total Primary VMs:	--
Powered On Primary VMs:	--
Total Secondary VMs:	--
Powered On Secondary VMs:	--

/var/log/vmkernal.log

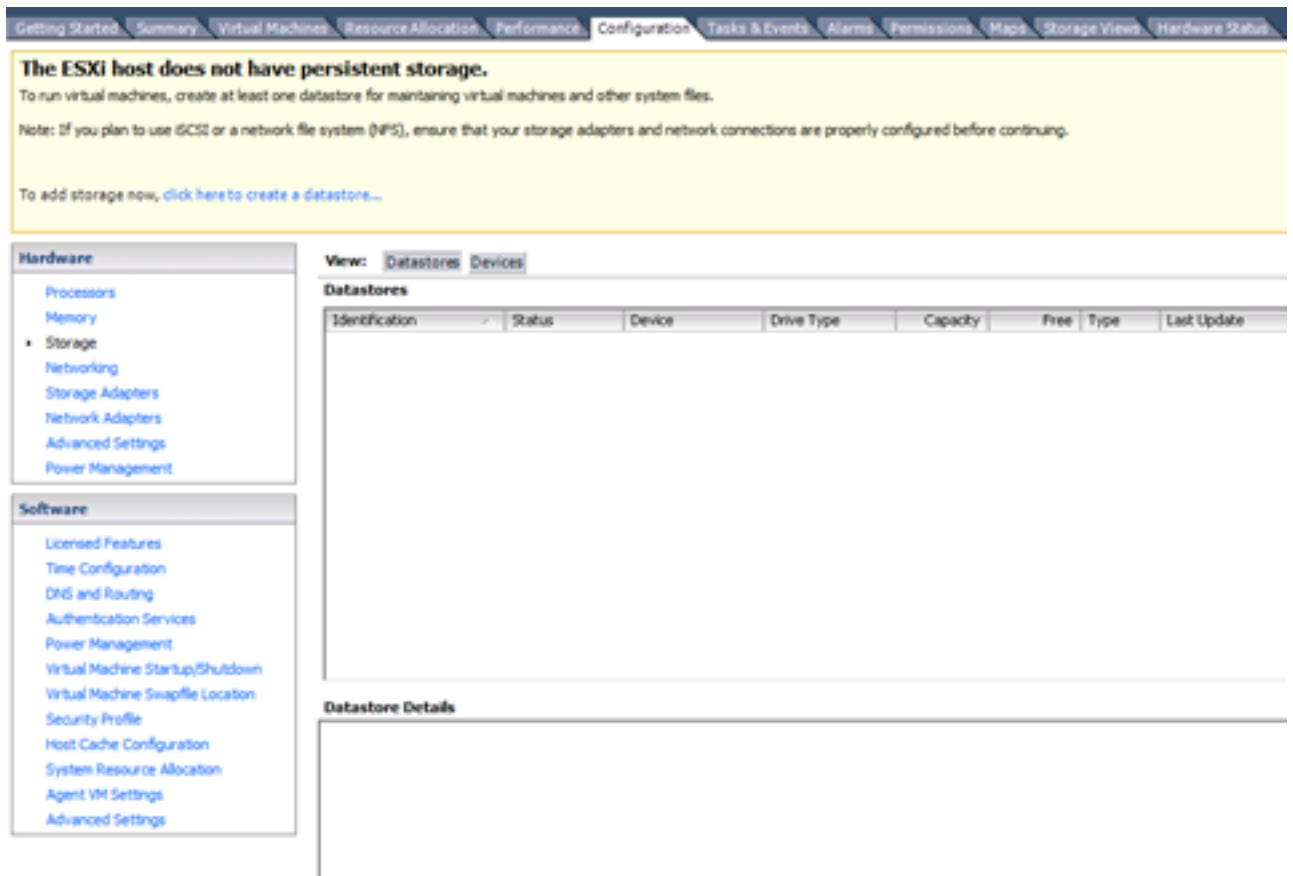
```
2015-09-30T19:15:55.815Z cpu22:33374)VM: 8389: Device naa.600605b006b497b0ff00002002114d1:3 detected to be a snapshot:
2015-09-30T19:15:55.840Z cpu22:33374)VM: 8396: queried disk ID: <type 2, len 22, lun 0, devType 0, scsi 0, h(id) 501754826480
8749311>
2015-09-30T19:15:55.840Z cpu22:33374)VM: 8403: on-disk disk ID: <type 2, len 22, lun 0, devType 0, scsi 0, h(id) 108724824995
87305860>
```

VMWare <http://kb.vmware.com/kb/1011387>

vSpherewebUICLI

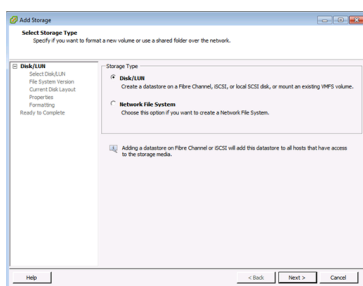
ESXi 5.x vSphere

- 1.
2. Configuration



- 3.

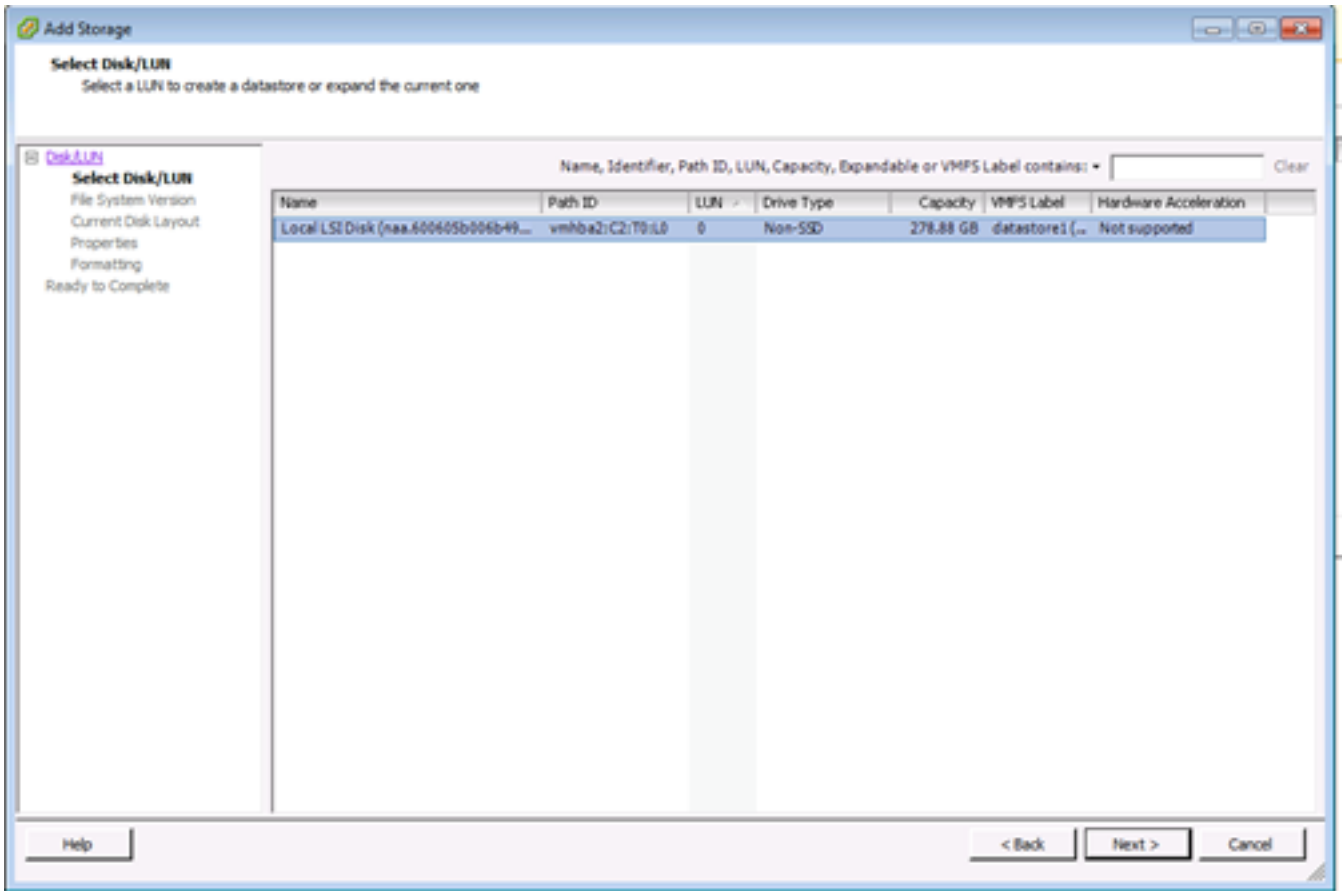
4. Disk/LUN



5.

6. VMFSLUNLUN

VMFSLUNVMFS



7.

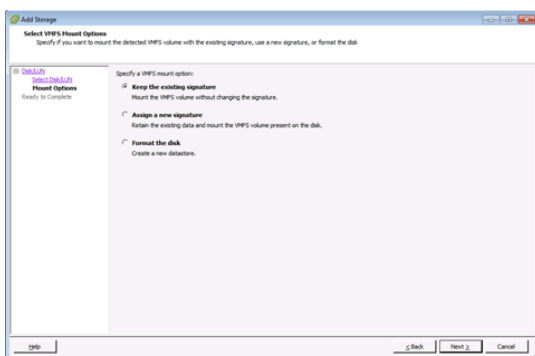
8.

a.LUN (LUN)

b.Resignature LUN

c.LUN

LUNresignatureVMFSvCenter



90.

