

带期满功能的VPN3000 RADIUS使用Microsoft互联网认证服务器

目录

[简介](#)

[先决条件](#)

[要求](#)

[使用的组件](#)

[网络图](#)

[规则](#)

[配置VPN3000 RADIUS with Expiry功能](#)

[配置VPN 3000集中器](#)

[配置Microsoft IAS](#)

[验证](#)

[故障排除](#)

[相关信息](#)

简介

本文突出显示步骤配置在VPN 3000集中器的RADIUS with Expiry功能。为MS-CHAP2配置的Microsoft互联网认证服务(IAS) (为此功能不支持的PAP)，使用作为RADIUS服务器在本例中。启用此功能，当他们启动Cisco VPN Client连接到VPN 3000集中器时，提示VPN用户更改一个已到期Microsoft Windows密码。

参考请[配置Cisco VPN 3000系列集中器支持NT口令有效期功能以RADIUS服务器](#)为了学习与RADIUS验证的更加大致同样的案例。

先决条件

要求

本文档没有任何特定的要求。

使用的组件

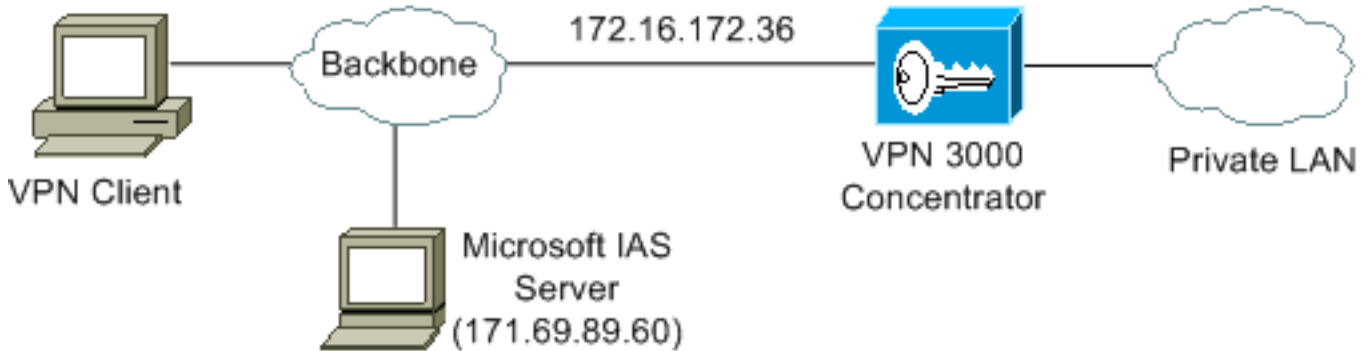
本文档中的信息基于以下软件和硬件版本：

- Cisco VPN 3000集中器用Cisco IOS软件版本3.5.3A
- Cisco VPN客户端软件版本3.5.1C
- 在Windows 2000服务器安装的Microsoft IAS
- 本文的用户在Microsoft Windows 2000激活目录服务器定义

本文档中的信息都是基于特定实验室环境中的设备编写的。本文档中使用的所有设备最初均采用原始（默认）配置。如果您使用的是真实网络，请确保您已经了解所有命令的潜在影响。

网络图

本文档使用以下网络设置：



规则

有关文档规则的详细信息，请参阅 [Cisco 技术提示规则](#)。

配置VPN3000 RADIUS with Expiry功能

配置VPN 3000集中器

完成这些步骤为了配置VPN 3000集中器。

1. 选择Configuration > User Management > Groups为了配置VPN组。

The screenshot shows the configuration page for the 'windowsuser' group. The breadcrumb is 'Configuration | User Management | Groups | Modify windowsuser'. Below the breadcrumb is a note: 'Check the **Inherit?** box to set a field that you want to default to the base group value. Uncheck the **Inherit?** box and enter a new value to override base group values.' There are tabs for 'Identity', 'General', 'IPSec', 'Mode Config', 'Client FW', 'HW Client', and 'PPTP/L2TP'. The 'Identity Parameters' table is as follows:

Attribute	Value	Description
Group Name	windowsuser	Enter a unique name for the group.
Password	XXXXXXXXXXXXXXXXXXXX	Enter the password for the group.
Verify	XXXXXXXXXXXXXXXXXXXX	Verify the group's password.
Type	Internal	<i>External</i> groups are configured on an external authentication server (e.g. RADIUS). <i>Internal</i> groups are configured on the VPN 3000 Concentrator's Internal Database.

At the bottom of the form are 'Apply' and 'Cancel' buttons.

2. 指定“验证”表示的Xauth方法作为“RADIUS with Expiry”在IPSec选项下。

IPSec Parameters			
Attribute	Value	Inherit?	Description
IPSec SA	ESP-3DES-MD5	<input checked="" type="checkbox"/>	Select the group's IPSec Security Association.
IKE Peer Identity Validation	If supported by certificate	<input checked="" type="checkbox"/>	Select whether or not to validate the identity of the peer using the peer's certificate.
IKE Keepalives	<input checked="" type="checkbox"/>	<input checked="" type="checkbox"/>	Check to enable the use of IKE keepalives for members of this group.
Tunnel Type	Remote Access	<input checked="" type="checkbox"/>	Select the type of tunnel for this group. Update the Remote Access parameters below as needed.
Remote Access Parameters			
Group Lock	<input type="checkbox"/>	<input checked="" type="checkbox"/>	Lock users into this group.
Authentication	RADIUS with Expiry	<input type="checkbox"/>	Select the authentication method for members of this group. This parameter does not apply to Individual User Authentication .
IPComp	None	<input checked="" type="checkbox"/>	Select the method of IP Compression for members of this group.
Reauthentication on Rekey	<input type="checkbox"/>	<input checked="" type="checkbox"/>	Check to reauthenticate the user on an IKE (Phase-1) rekey.
Mode Configuration	<input checked="" type="checkbox"/>	<input checked="" type="checkbox"/>	Check to initiate the exchange of Mode Configuration parameters with the client. This must be checked if version 2.5 (or earlier) of the the Altiga/Cisco client are being used by members of this group.

Apply Cancel

3. 选择 Configuration > System > Servers > Authentication 为了定义 RADIUS 服务器。

Configuration | System | Servers | Authentication | Modify

Change a configured user authentication server.

Server Type: RADIUS

Authentication Server: 171.69.89.60

Server Port: 1645

Timeout: 4

Retries: 2

Server Secret: [masked]

Verify: [masked]

Applying Selecting *Internal Server* will let you add users to the internal user database.

Enter IP address or hostname.

Enter 0 for default port (1645).

Enter the timeout for this server (seconds).

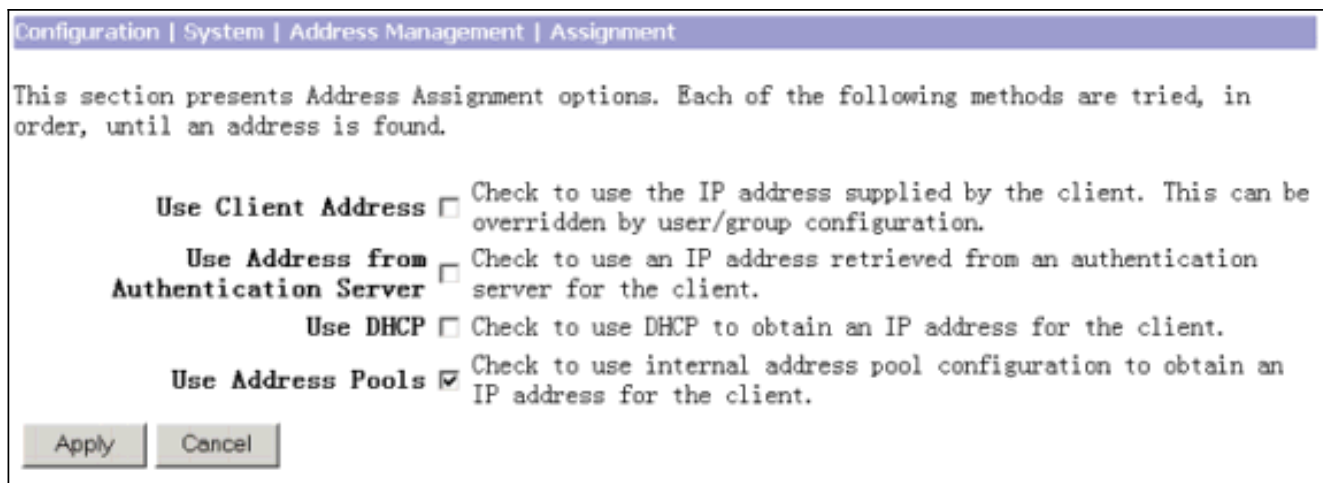
Enter the number of retries for this server.

Enter the RADIUS server secret.

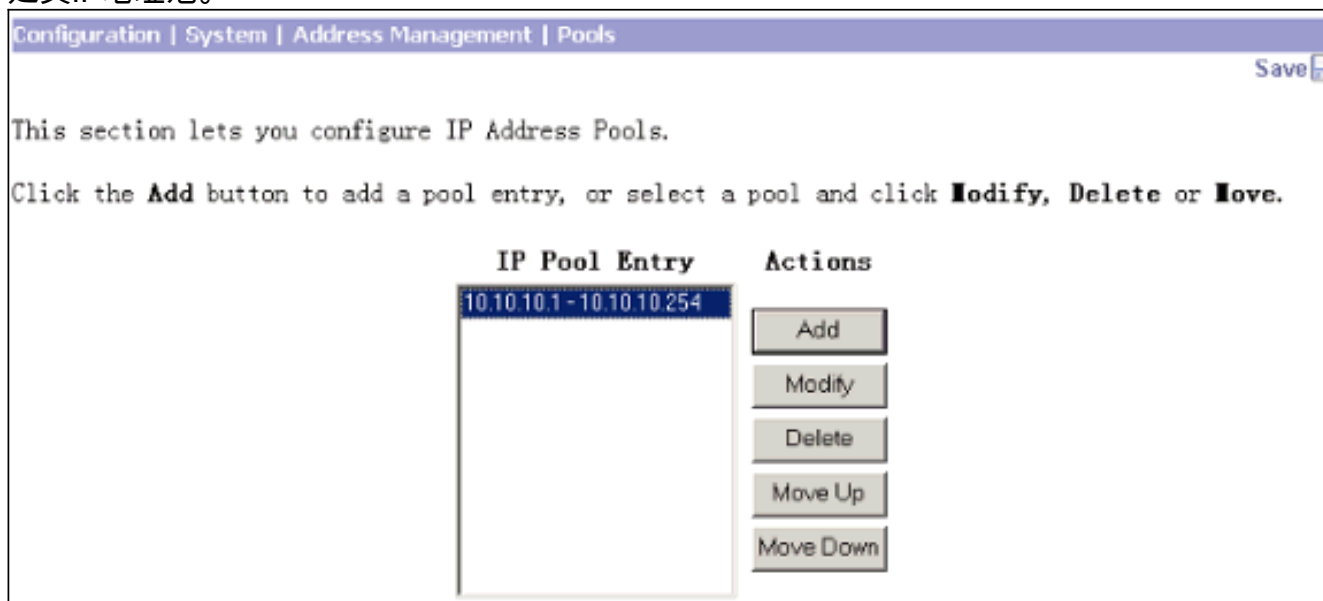
Re-enter the secret.

Apply Cancel

4. 定义 IP 地址分配方法。此示例使用在 VPN 3000 集中器定义的本地一个 IP 地址池。



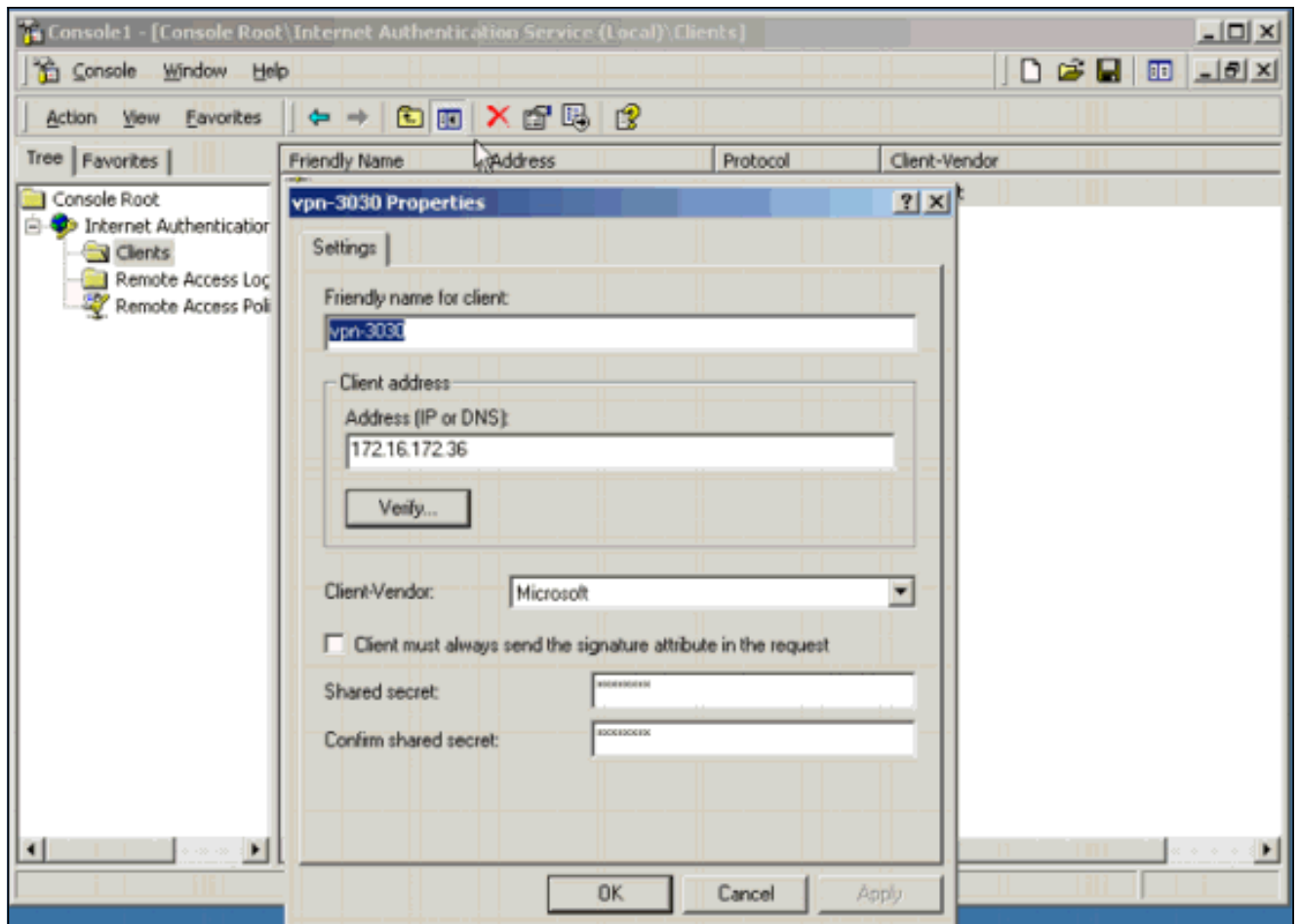
5. 定义IP地址池。



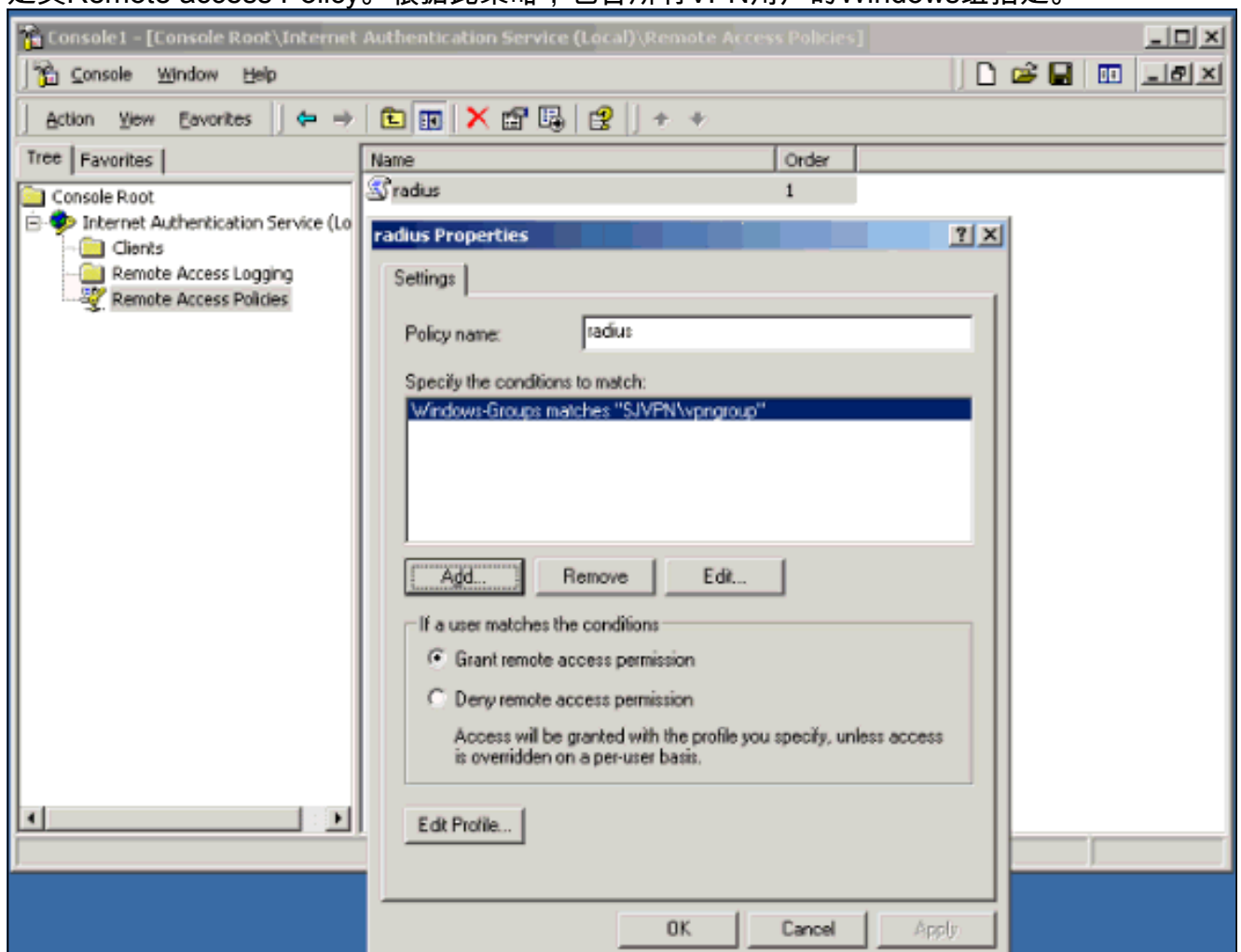
[配置Microsoft IAS](#)

完成这些步骤为了配置Microsoft IAS。

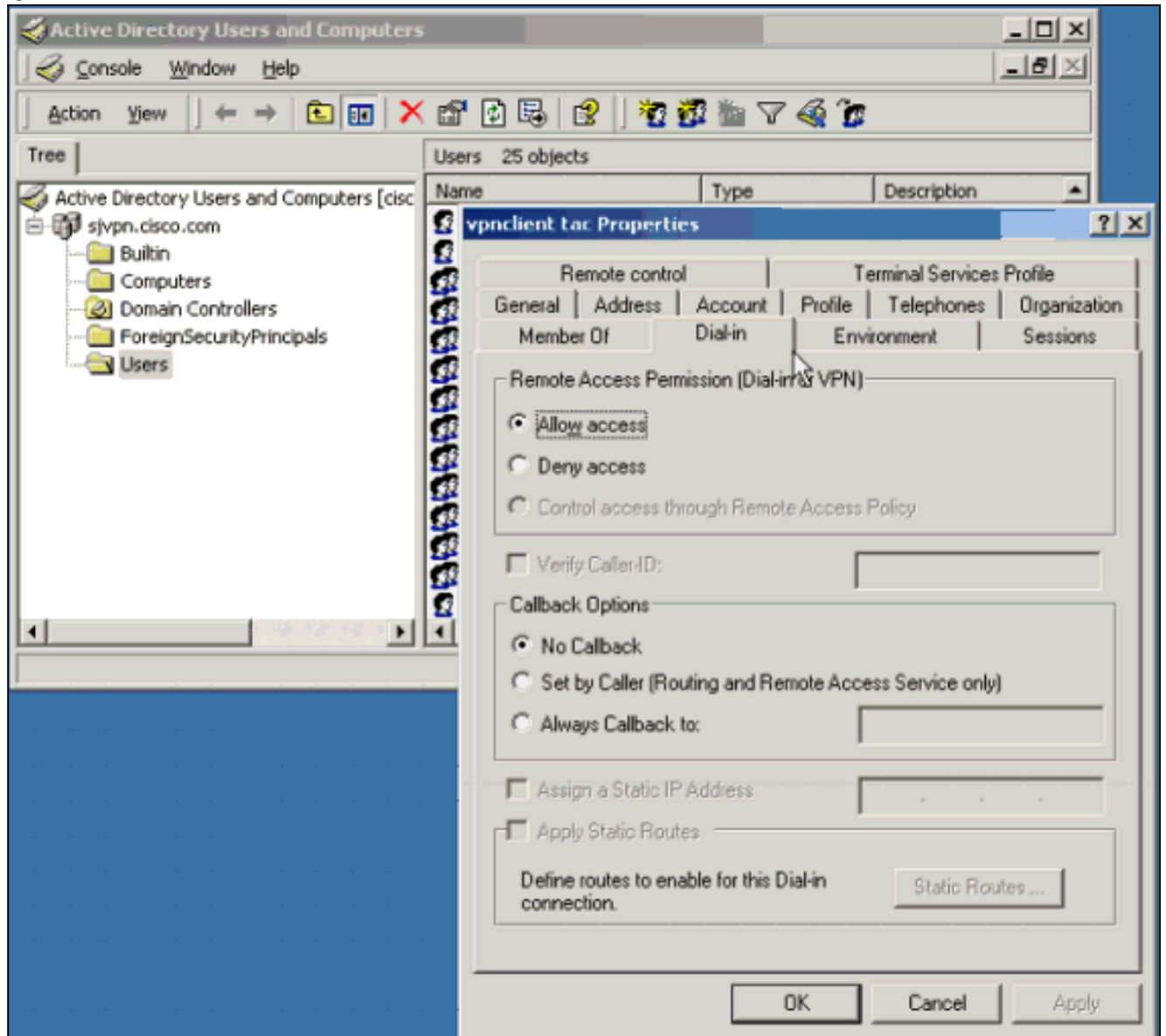
1. 定义VPN 3000集中器作为客户端。**注意：** Microsoft选择，客户端供应商获得RADIUS with Expiry功能要求的Microsoft Vendor-Specific Attributes (VSA)的支持。



2. 定义Remote access Policy。根据此策略，包含所有VPN用户的Windows组指定。

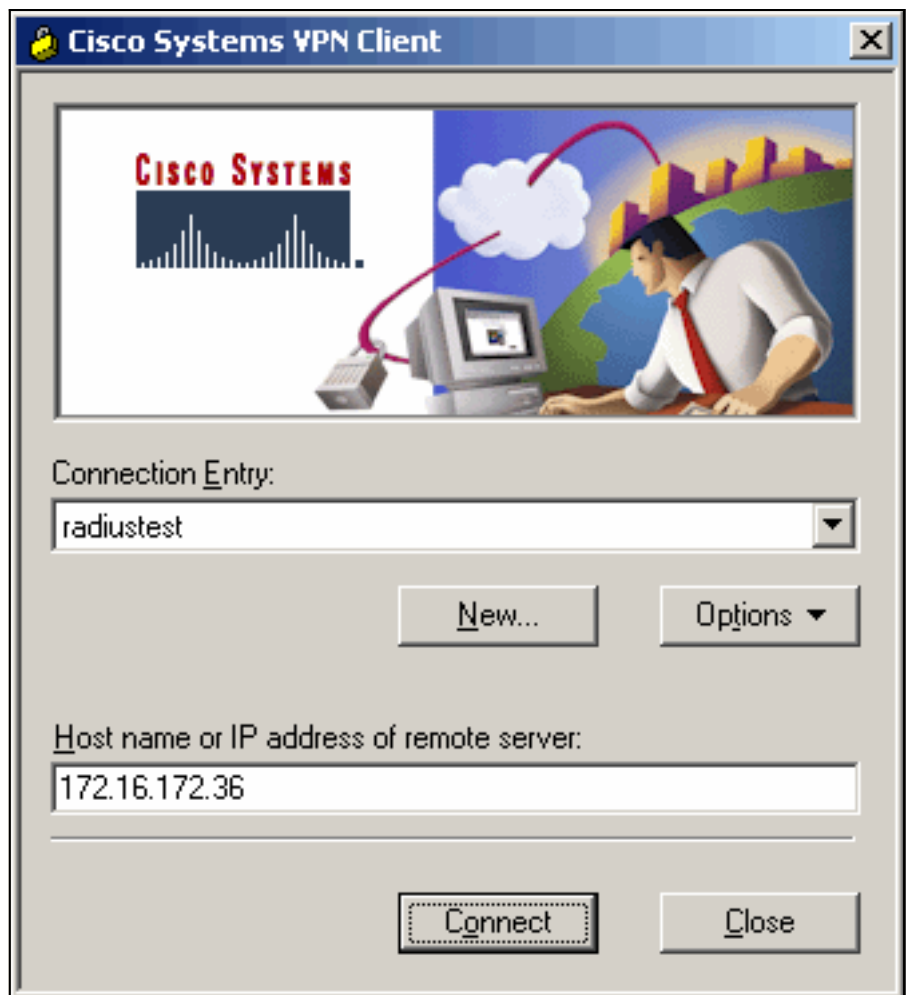


注意： Windows用户必须检查允许在用户配置文件的远程访问许可(拨入或VPN)部分下如下所示。

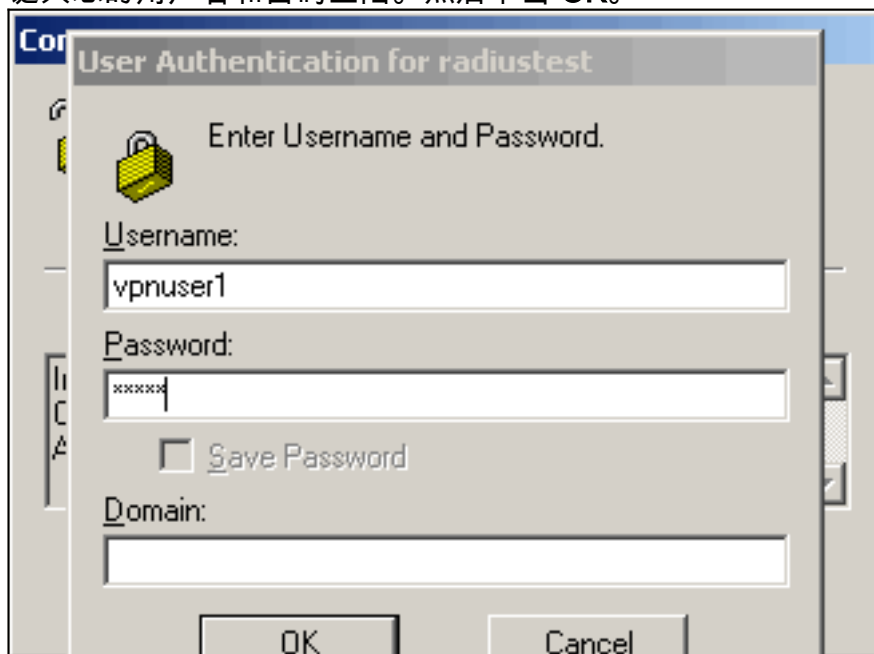


验证

这些示例展示RADIUS with Expiry功能如何运作，当Windows密码超时。VPN用户是消息灵通的密码超时并且提示输入新的。



1. 启动Cisco VPN Client。
2. 键入您的用户名和密码登陆。然后单击 OK。



3. 当Windows密码超时，将提示您更改密码。键入新密码。再键入确认它，并且点击OK键。



故障排除

此部分显示在VPN 3000集中器捕获的事件日志在隧道协商时。参考粗体部分发现Microsoft VSAs如何通过IAS和VPN 3000集中器之间通知VPN用户密码超时和采取从VPN用户的新窗口密码上一步到Windows用户数据库。

```
1 08/06/2002 16:45:40.920 SEV=8 AUTHDBG/1 RPT=263
AUTH_Open() returns 102

2 08/06/2002 16:45:40.920 SEV=7 AUTH/12 RPT=264
Authentication session opened: handle = 102

3 08/06/2002 16:45:40.920 SEV=8 AUTHDBG/3 RPT=302
AUTH_PutAttrTable(102, 742784)

4 08/06/2002 16:45:40.920 SEV=8 AUTHDBG/6 RPT=183
AUTH_GroupAuthenticate(102, 9aa2e24, 4983ac)

5 08/06/2002 16:45:40.920 SEV=8 AUTHDBG/59 RPT=302
AUTH_BindServer(9a03fcc, 0, 0)

6 08/06/2002 16:45:40.920 SEV=9 AUTHDBG/69 RPT=302
Auth Server 18cdfa4 has been bound to ACB 9a03fcc, sessions = 1

7 08/06/2002 16:45:40.920 SEV=8 AUTHDBG/65 RPT=302
AUTH_CreateTimer(9a03fcc, 0, 0)

8 08/06/2002 16:45:40.920 SEV=9 AUTHDBG/72 RPT=302
Reply timer created: handle = 5A0C001B

9 08/06/2002 16:45:40.920 SEV=8 AUTHDBG/61 RPT=302
AUTH_BuildMsg(9a03fcc, 0, 0)

10 08/06/2002 16:45:40.920 SEV=8 AUTHDBG/64 RPT=302
AUTH_StartTimer(9a03fcc, 0, 0)
```


11 08/06/2002 16:45:40.920 SEV=9 AUTHDBG/73 RPT=302
Reply timer started: handle = 5A0C001B, timestamp = 355273988, timeout = 30000

12 08/06/2002 16:45:40.920 SEV=8 AUTHDBG/62 RPT=302
AUTH_SndRequest(9a03fcc, 0, 0)

13 08/06/2002 16:45:40.920 SEV=8 AUTHDBG/50 RPT=477
IntDB_Decode(62fd1a8, 146)

14 08/06/2002 16:45:40.920 SEV=10 AUTHDECODE/12 RPT=1
IntDB: Type = 1 (0x01) User-Name

15 08/06/2002 16:45:40.920 SEV=10 AUTHDECODE/13 RPT=1
IntDB: Length = 11 (0x0B)

16 08/06/2002 16:45:40.920 SEV=10 AUTHDECODE/14 RPT=1
IntDB: Value (String) =

17 08/06/2002 16:45:40.920 SEV=10 AUTHDECODE/0 RPT=1
0000: 77696E64 6F777375 736572 windowsuser

18 08/06/2002 16:45:40.920 SEV=10 AUTHDECODE/12 RPT=2
IntDB: Type = 5 (0x05) NAS-Port

19 08/06/2002 16:45:40.920 SEV=10 AUTHDECODE/13 RPT=2
IntDB: Length = 4 (0x04)

20 08/06/2002 16:45:40.920 SEV=10 AUTHDECODE/15 RPT=1
IntDB: Value (Integer) = 0 (0x0000)

21 08/06/2002 16:45:40.920 SEV=10 AUTHDECODE/12 RPT=3
IntDB: Type = 6 (0x06) Service-Type

22 08/06/2002 16:45:40.920 SEV=10 AUTHDECODE/13 RPT=3
IntDB: Length = 4 (0x04)

23 08/06/2002 16:45:40.920 SEV=10 AUTHDECODE/15 RPT=2
IntDB: Value (Integer) = 2 (0x0002)

24 08/06/2002 16:45:40.920 SEV=10 AUTHDECODE/12 RPT=4
IntDB: Type = 7 (0x07) Framed-Protocol

25 08/06/2002 16:45:40.920 SEV=10 AUTHDECODE/13 RPT=4
IntDB: Length = 4 (0x04)

26 08/06/2002 16:45:40.920 SEV=10 AUTHDECODE/15 RPT=3
IntDB: Value (Integer) = 1 (0x0001)

27 08/06/2002 16:45:40.920 SEV=10 AUTHDECODE/12 RPT=5
IntDB: Type = 66 (0x42) Tunnel-Client-Endpoint

28 08/06/2002 16:45:40.920 SEV=10 AUTHDECODE/13 RPT=5
IntDB: Length = 12 (0x0C)

29 08/06/2002 16:45:40.920 SEV=10 AUTHDECODE/14 RPT=2
IntDB: Value (String) =

30 08/06/2002 16:45:40.920 SEV=10 AUTHDECODE/0 RPT=2
0000: 3137312E 36392E38 392E3930 171.69.89.90

31 08/06/2002 16:45:40.920 SEV=10 AUTHDECODE/12 RPT=6
IntDB: Type = 4118 (0x1016) Authentication-Server-Type

32 08/06/2002 16:45:40.920 SEV=10 AUTHDECODE/13 RPT=6
IntDB: Length = 4 (0x04)

33 08/06/2002 16:45:40.920 SEV=10 AUTHDECODE/15 RPT=4
IntDB: Value (Integer) = 5 (0x0005)

34 08/06/2002 16:45:40.920 SEV=8 AUTHDBG/47 RPT=477
IntDB_Xmt(9a03fcc)

35 08/06/2002 16:45:40.920 SEV=9 AUTHDBG/71 RPT=302
xmit_cnt = 1

36 08/06/2002 16:45:40.920 SEV=8 AUTHDBG/47 RPT=478
IntDB_Xmt(9a03fcc)

37 08/06/2002 16:45:41.020 SEV=8 AUTHDBG/49 RPT=239
IntDB_Match(9a03fcc, 62f1c4c)

38 08/06/2002 16:45:41.020 SEV=8 AUTHDBG/63 RPT=302
AUTH_RcvReply(9a03fcc, 0, 0)

39 08/06/2002 16:45:41.020 SEV=8 AUTHDBG/50 RPT=478
IntDB_Decode(62f1c4c, 170)

40 08/06/2002 16:45:41.020 SEV=10 AUTHDECODE/12 RPT=7
IntDB: Type = 1 (0x01) User-Name

41 08/06/2002 16:45:41.020 SEV=10 AUTHDECODE/13 RPT=7
IntDB: Length = 11 (0x0B)

42 08/06/2002 16:45:41.020 SEV=10 AUTHDECODE/14 RPT=3
IntDB: Value (String) =

43 08/06/2002 16:45:41.020 SEV=10 AUTHDECODE/0 RPT=3
0000: 77696E64 6F777375 736572 windowsuser

44 08/06/2002 16:45:41.020 SEV=10 AUTHDECODE/12 RPT=8
IntDB: Type = 4109 (0x100D) IPSec-Authentication

45 08/06/2002 16:45:41.020 SEV=10 AUTHDECODE/13 RPT=8
IntDB: Length = 4 (0x04)

46 08/06/2002 16:45:41.020 SEV=10 AUTHDECODE/15 RPT=5
IntDB: Value (Integer) = 6 (0x0006)

47 08/06/2002 16:45:41.020 SEV=10 AUTHDECODE/12 RPT=9
IntDB: Type = 4123 (0x101B) Split-Tunnel-Inclusion-List

48 08/06/2002 16:45:41.020 SEV=10 AUTHDECODE/13 RPT=9
IntDB: Length = 4 (0x04)

49 08/06/2002 16:45:41.020 SEV=10 AUTHDECODE/14 RPT=4
IntDB: Value (String) =

50 08/06/2002 16:45:41.020 SEV=10 AUTHDECODE/0 RPT=4
0000: 74657374 test

51 08/06/2002 16:45:41.020 SEV=10 AUTHDECODE/12 RPT=10
IntDB: Type = 4151 (0x1037) Split-Tunneling-Policy

52 08/06/2002 16:45:41.020 SEV=10 AUTHDECODE/13 RPT=10
IntDB: Length = 4 (0x04)

53 08/06/2002 16:45:41.020 SEV=10 AUTHDECODE/15 RPT=6
IntDB: Value (Integer) = 1 (0x0001)

54 08/06/2002 16:45:41.020 SEV=8 AUTHDBG/48 RPT=239
IntDB_Rcv(9a03fcc)

55 08/06/2002 16:45:41.020 SEV=8 AUTHDBG/66 RPT=302
AUTH_DeleteTimer(9a03fcc, 0, 0)

56 08/06/2002 16:45:41.020 SEV=9 AUTHDBG/74 RPT=302
Reply timer stopped: handle = 5A0C001B, timestamp = 355273998

57 08/06/2002 16:45:41.020 SEV=8 AUTHDBG/58 RPT=302
AUTH_Callback(9a03fcc, 0, 0)

58 08/06/2002 16:45:41.020 SEV=6 AUTH/41 RPT=218 171.69.89.90
Authentication successful: handle = 102, server = Internal,
group = windowsuser

59 08/06/2002 16:45:41.020 SEV=8 AUTHDBG/4 RPT=288
AUTH_GetAttrTable(102, 742a30)

60 08/06/2002 16:45:41.020 SEV=8 AUTHDBG/2 RPT=263
AUTH_Close(102)

61 08/06/2002 16:45:41.020 SEV=8 AUTHDBG/60 RPT=302
AUTH_UnbindServer(9a03fcc, 0, 0)

62 08/06/2002 16:45:41.020 SEV=9 AUTHDBG/70 RPT=302
Auth Server 18cdfa4 has been unbound from ACB 9a03fcc, sessions = 0

63 08/06/2002 16:45:41.020 SEV=8 AUTHDBG/10 RPT=263
AUTH_Int_FreeAuthCB(9a03fcc)

64 08/06/2002 16:45:41.020 SEV=7 AUTH/13 RPT=264
Authentication session closed: handle = 102

65 08/06/2002 16:45:46.610 SEV=8 AUTHDBG/1 RPT=264
AUTH_Open() returns 103

66 08/06/2002 16:45:46.610 SEV=7 AUTH/12 RPT=265
Authentication session opened: handle = 103

67 08/06/2002 16:45:46.610 SEV=8 AUTHDBG/3 RPT=303
AUTH_PutAttrTable(103, 7429b8)

68 08/06/2002 16:45:46.610 SEV=8 AUTHDBG/5 RPT=56
AUTH_Authenticate(103, 500a278, 4cad38)

69 08/06/2002 16:45:46.610 SEV=8 AUTHDBG/59 RPT=303
AUTH_BindServer(9aa46fc, 0, 0)

70 08/06/2002 16:45:46.610 SEV=9 AUTHDBG/69 RPT=303
Auth Server 18cela4 has been bound to ACB 9aa46fc, sessions = 1

71 08/06/2002 16:45:46.610 SEV=8 AUTHDBG/65 RPT=303
AUTH_CreateTimer(9aa46fc, 0, 0)

72 08/06/2002 16:45:46.610 SEV=9 AUTHDBG/72 RPT=303
Reply timer created: handle = 5A0E0016

73 08/06/2002 16:45:46.610 SEV=8 AUTHDBG/61 RPT=303
AUTH_BuildMsg(9aa46fc, 0, 0)

74 08/06/2002 16:45:46.610 SEV=8 AUTHDBG/27 RPT=64
Radius_Build(9aa46fc)

75 08/06/2002 16:45:46.610 SEV=8 AUTHDBG/64 RPT=303
AUTH_StartTimer(9aa46fc, 0, 0)

76 08/06/2002 16:45:46.610 SEV=9 AUTHDBG/73 RPT=303
Reply timer started: handle = 5A0E0016, timestamp = 355274557, timeout = 4000

77 08/06/2002 16:45:46.610 SEV=8 AUTHDBG/62 RPT=303 AUTH_SndRequest(9aa46fc, 0, 0) 78 08/06/2002
16:45:46.610 SEV=8 AUTHDBG/31 RPT=127 Radius_Decode(62f1c4c, 156) 79 08/06/2002 16:45:46.610
SEV=13 AUTHDECODE/0 RPT=5 0000: 0122009C 7F70A83B E37B9B27 31668A07 .".p.i.{'1f.. 0010:
1089C0A4 010A7670 6E757365 72310506vpuser1.. 0020: 0000041C 06060000 00020706 00000001
..... 0030: 420E3137 312E3639 2E38392E 39301A18 B.171.69.89.90.. 0040: 00000137
0B12BE14 D10DA7ED 8A00FD25 ...7.....% 0050: 47B90956 3B191A3A 00000137 19340000
G..V;...7.4.. 0060: 62B6A996 DD4962AE 05FA5AAF FDDA96A9 b....Ib...Z..... 0070: 00000000
00000000 3CA2008E A03CABCF<....<.. 0080: 73FB28E0 D1560A01 D96AAE3B BFB6DD42
s(..V...j.;...B 0090: 0406AC10 AC243D06 00000005\$=..... 89 08/06/2002 16:45:46.610 SEV=10
AUTHDECODE/1 RPT=1 Radius: Code = 1 (0x01) 90 08/06/2002 16:45:46.610 SEV=10 AUTHDECODE/2 RPT=1
Radius: Identifier = 34 (0x22) 91 08/06/2002 16:45:46.610 SEV=10 AUTHDECODE/3 RPT=1 Radius:
Length = 156 (0x009C) 92 08/06/2002 16:45:46.610 SEV=10 AUTHDECODE/4 RPT=1 Radius: Vector: 93
08/06/2002 16:45:46.610 SEV=10 AUTHDECODE/0 RPT=6 0000: 7F70A83B E37B9B27 31668A07 1089C0A4
.p.i.{'1f..... 94 08/06/2002 16:45:46.610 SEV=10 AUTHDECODE/5 RPT=1 Radius: Type = 1 (0x01)
User-Name 95 08/06/2002 16:45:46.610 SEV=10 AUTHDECODE/6 RPT=1 Radius: Length = 10 (0x0A) 96
08/06/2002 16:45:46.610 SEV=10 AUTHDECODE/7 RPT=1 Radius: Value (String) = 97 08/06/2002
16:45:46.610 SEV=10 AUTHDECODE/0 RPT=7 0000: 76706E75 73657231 vpuser1 98 08/06/2002
16:45:46.610 SEV=10 AUTHDECODE/5 RPT=2> Radius: Type = 5 (0x05) NAS-Port 99 08/06/2002
16:45:46.610 SEV=10 AUTHDECODE/6 RPT=2 Radius: Length = 6 (0x06) 100 08/06/2002 16:45:46.610
SEV=10 AUTHDECODE/11 RPT=1 Radius: Value (Hex) = 0x41C 101 08/06/2002 16:45:46.610 SEV=10
AUTHDECODE/5 RPT=3 Radius: Type = 6 (0x06) Service-Type 102 08/06/2002 16:45:46.610 SEV=10
AUTHDECODE/6 RPT=3 Radius: Length = 6 (0x06) 103 08/06/2002 16:45:46.610 SEV=10 AUTHDECODE/11
RPT=2 Radius: Value (Hex) = 0x2 104 08/06/2002 16:45:46.610 SEV=10 AUTHDECODE/5 RPT=4 Radius:
Type = 7 (0x07) Framed-Protocol 105 08/06/2002 16:45:46.610 SEV=10 AUTHDECODE/6 RPT=4 Radius:
Length = 6 (0x06) 106 08/06/2002 16:45:46.610 SEV=10 AUTHDECODE/11 RPT=3 Radius: Value (Hex) =
0x1 107 08/06/2002 16:45:46.610 SEV=10 AUTHDECODE/5 RPT=5 Radius: Type = 66 (0x42) Tunnel-
Client-Endpoint 108 08/06/2002 16:45:46.610 SEV=10 AUTHDECODE/6 RPT=5 Radius: Length = 14 (0x0E)
109 08/06/2002 16:45:46.610 SEV=10 AUTHDECODE/7 RPT=2 Radius: Value (String) = 110 08/06/2002
16:45:46.610 SEV=10 AUTHDECODE/0 RPT=8 0000: 3137312E 36392E38 392E3930 171.69.89.90 111
08/06/2002 16:45:46.610 SEV=10 AUTHDECODE/5 RPT=6 Radius: Type = 26 (0x1A) Vendor-Specific 112
08/06/2002 16:45:46.610 SEV=10 AUTHDECODE/6 RPT=6 Radius: Length = 24 (0x18) 113 08/06/2002
16:45:46.610 SEV=10 AUTHDECODE/10 RPT=1 Radius: Vendor ID = 311 (0x00000137) 114 08/06/2002
16:45:46.610 SEV=10 AUTHDECODE/5 RPT=7 Radius: Type = 11 (0x0B) MS-CHAP-Challenge 115 08/06/2002
16:45:46.610 SEV=10 AUTHDECODE/6 RPT=7 Radius: Length = 18 (0x12) 116 08/06/2002 16:45:46.610
SEV=10 AUTHDECODE/7 RPT=3 Radius: Value (String) = 117 08/06/2002 16:45:46.610 SEV=10
AUTHDECODE/0 RPT=9 0000: BE14D10D A7ED8A00 FD2547B9 09563B19%G..V;. 118 08/06/2002
16:45:46.610 SEV=10 AUTHDECODE/5 RPT=8 Radius: Type = 26 (0x1A) Vendor-Specific 119 08/06/2002
16:45:46.610 SEV=10 AUTHDECODE/6 RPT=8 Radius: Length = 58 (0x3A) 120 08/06/2002 16:45:46.610
SEV=10 AUTHDECODE/10 RPT=2 Radius: Vendor ID = 311 (0x00000137) 121 08/06/2002 16:45:46.610
SEV=10 AUTHDECODE/5 RPT=9 Radius: Type = 25 (0x19) MS-CHAP2-Response 122 08/06/2002 16:45:46.610
SEV=10 AUTHDECODE/6 RPT=9 Radius: Length = 52 (0x34) 123 08/06/2002 16:45:46.610 SEV=10
AUTHDECODE/7 RPT=4 Radius: Value (String) = 124 08/06/2002 16:45:46.610 SEV=10 AUTHDECODE/0
RPT=10 0000: 000062B6 A996DD49 62AE05FA 5AAFFDDA ..b....Ib...Z... 0010: 96A90000 00000000

00003CA2 008EA03C<....< 0020: ABCF73FB 28E0D156 0A01D96A AE3BBFB6 ..s(..V...j;...
0030: DD42 .B 128 08/06/2002 16:45:46.620 SEV=10 AUTHDECODE/5 RPT=10 Radius: Type = 4 (0x04)
NAS-IP-Address 129 08/06/2002 16:45:46.620 SEV=10 AUTHDECODE/6 RPT=10 Radius: Length = 6 (0x06)
130 08/06/2002 16:45:46.620 SEV=10 AUTHDECODE/9 RPT=1 Radius: Value (IP Address) = 172.16.172.36
(0xAC10AC24) 131 08/06/2002 16:45:46.620 SEV=10 AUTHDECODE/5 RPT=11 Radius: Type = 61 (0x3D)
NAS-Port-Type 132 08/06/2002 16:45:46.620 SEV=10 AUTHDECODE/6 RPT=11 Radius: Length = 6 (0x06)
133 08/06/2002 16:45:46.620 SEV=10 AUTHDECODE/11 RPT=4 Radius: Value (Hex) = 0x5 134 08/06/2002
16:45:46.620 SEV=8 AUTHDBG/28 RPT=64 Radius_Xmt(9aa46fc) 135 08/06/2002 16:45:46.620 SEV=9
AUTHDBG/71 RPT=303 xmit_cnt = 1 136 08/06/2002 16:45:46.710 SEV=8 AUTHDBG/30 RPT=64
Radius_Match(9aa46fc, 5004a10), id = 0x22, rcvd = 0x22 **137 08/06/2002 16:45:46.710 SEV=8**
AUTHDBG/63 RPT=303 AUTH_RcvReply(9aa46fc, 0, 0) 138 08/06/2002 16:45:46.710 SEV=8 AUTHDBG/31
RPT=128 Radius_Decode(5004a10, 42) 139 08/06/2002 16:45:46.710 SEV=13 AUTHDECODE/0 RPT=11 0000:
0322002A CCDF6607 AB8B6D51 9B17CFE1 ."*.f...mQ.... 0010: 6A11AE2E 1A160000 01370210 00453D36
j.....7...E=6 0020: 34382052 3D302056 3D33 48 R=0 V=3 142 08/06/2002 16:45:46.710 SEV=10
AUTHDECODE/1 RPT=2 Radius: Code = 3 (0x03) 143 08/06/2002 16:45:46.710 SEV=10 AUTHDECODE/2 RPT=2
Radius: Identifier = 34 (0x22) 144 08/06/2002 16:45:46.710 SEV=10 AUTHDECODE/3 RPT=2 Radius:
Length = 42 (0x002A) 145 08/06/2002 16:45:46.710 SEV=10 AUTHDECODE/4 RPT=2 Radius: Vector: 146
08/06/2002 16:45:46.710 SEV=10 AUTHDECODE/0 RPT=12 0000: CCDF6607 AB8B6D51 9B17CFE1 6A11AE2E
..f...mQ....j... **147 08/06/2002 16:45:46.710 SEV=10 AUTHDECODE/5 RPT=12 Radius: Type = 26 (0x1A)**
Vendor-Specific 148 08/06/2002 16:45:46.710 SEV=10 AUTHDECODE/6 RPT=12 Radius: Length = 22
(0x16) 149 08/06/2002 16:45:46.710 SEV=10 AUTHDECODE/10 RPT=3 Radius: Vendor ID = 311
(0x00000137) 150 08/06/2002 16:45:46.710 SEV=10 AUTHDECODE/5 RPT=13 Radius: Type = 2 (0x02) **MS-**
CHAP-Error 151 08/06/2002 16:45:46.710 SEV=10 AUTHDECODE/6 RPT=13 Radius: Length = 16 (0x10) 152
08/06/2002 16:45:46.710 SEV=10 AUTHDECODE/7 RPT=5 Radius: Value (String) = 153 08/06/2002
16:45:46.710 SEV=10 AUTHDECODE/0 RPT=13 0000: 00453D36 34382052 3D302056 3D33 .E=648 R=0 V=3 154
08/06/2002 16:45:46.710 SEV=8 AUTHDBG/29 RPT=64 Radius_Rcv(9aa46fc) 155 08/06/2002 16:45:46.710
SEV=8 AUTHDBG/66 RPT=303 AUTH_DeleteTimer(9aa46fc, 0, 0) 156 08/06/2002 16:45:46.710 SEV=9
AUTHDBG/74 RPT=303 Reply timer stopped: handle = 5A0E0016, timestamp = 355274567 157 08/06/2002
16:45:46.710 SEV=8 AUTHDBG/58 RPT=303 AUTH_Callback(9aa46fc, 0, 0) **158 08/06/2002 16:45:46.710**
SEV=3 AUTH/5 RPT=42 171.69.89.90 Authentication rejected: Reason = Password expired handle =
103, server = 171.69.89.60, user = vpnuser1, domain = <not specified> 160 08/06/2002
16:45:46.710 SEV=8 AUTHDBG/4 RPT=289 AUTH_GetAttrTable(103, 743aa8) 161 08/06/2002 16:45:46.710
SEV=8 AUTHDBG/4 RPT=290 AUTH_GetAttrTable(103, 743ad8) 162 08/06/2002 16:45:46.710 SEV=8
AUTHDBG/60 RPT=303 AUTH_UnbindServer(9aa46fc, 0, 0) 163 08/06/2002 16:45:46.710 SEV=9 AUTHDBG/70
RPT=303 Auth Server 18cela4 has been unbound from ACB 9aa46fc, sessions = 0 164 08/06/2002
16:45:50.480 SEV=8 AUTHDBG/3 RPT=304 AUTH_PutAttrTable(103, 742898) 165 08/06/2002 16:45:50.480
SEV=8 AUTHDBG/5 RPT=57 AUTH_Authenticate(103, 500a278, 4cad38) 166 08/06/2002 16:45:50.480 SEV=8
AUTHDBG/59 RPT=304 AUTH_BindServer(9aa46fc, 0, 0) 167 08/06/2002 16:45:50.480 SEV=9 AUTHDBG/69
RPT=304 Auth Server 18cela4 has been bound to ACB 9aa46fc, sessions = 1 168 08/06/2002
16:45:50.480 SEV=8 AUTHDBG/65 RPT=304 AUTH_CreateTimer(9aa46fc, 0, 0) 169 08/06/2002
16:45:50.480 SEV=9 AUTHDBG/72 RPT=304 Reply timer created: handle = 5A100016 170 08/06/2002
16:45:50.480 SEV=8 AUTHDBG/61 RPT=304 AUTH_BuildMsg(9aa46fc, 0, 0) 171 08/06/2002 16:45:50.480
SEV=8 AUTHDBG/27 RPT=65 Radius_Build(9aa46fc) 172 08/06/2002 16:45:50.480 SEV=8 AUTHDBG/64
RPT=304 AUTH_StartTimer(9aa46fc, 0, 0) 173 08/06/2002 16:45:50.480 SEV=9 AUTHDBG/73 RPT=304
Reply timer started: handle = 5A100016, timestamp = 355274944, timeout = 4000 174 08/06/2002
16:45:50.480 SEV=8 AUTHDBG/62 RPT=304 AUTH_SndRequest(9aa46fc, 0, 0) 175 08/06/2002 16:45:50.480
SEV=8 AUTHDBG/31 RPT=129 Radius_Decode(9a03ba8, 726) 176 08/06/2002 16:45:50.480 SEV=13
AUTHDECODE/0 RPT=14 0000: 012302D6 E8317738 275469B7 A7D230C5 .#...lw8'Ti...0. 0010: 50CC8DE0
010A7670 6E757365 72310506 P....vpnuser1.. 0020: 0000041C 06060000 00020706 00000001
..... 0030: 420E3137 312E3639 2E38392E 39301AFF B.171.69.89.90.. 0040: 00000137
06F90601 000164BF 9A72CBB1 ...7.....d..r.. 0050: FE1F1FFA 7D66A600 45BD9769 DD24BAAF
...}f..E..i.\$.. 0060: D68FCDF2 BA9F9B2C FABE2BCC 0D66CF62+.f.b 0070: 51F6E280
F37502AD 53E5D6FB 7648C8D7 Q...u..S...vH.. 0080: 68CCC00F D1B186C8 7217E6DB 7E455DB4
h.....r...~E]. 0090: EAB2FE0C 2F09C25A 359F4DCA FE15B816Z5.M.... 00A0: 5B113D39
1101444C B8E85BE4 7BDD367F [=9..DL..[.6. 00B0: 145D5786 38A3A8DC 8D07A029 911DC3D8
.]W.8.....).... **188 08/06/2002 16:45:50.480 SEV=10 AUTHDECODE/1 RPT=3 Radius: Code = 1 (0x01)**
189 08/06/2002 16:45:50.480 SEV=10 AUTHDECODE/2 RPT=3 Radius: Identifier = 35 (0x23) 190
08/06/2002 16:45:50.480 SEV=10 AUTHDECODE/3 RPT=3 Radius: Length = 726 (0x02D6) 191 08/06/2002
16:45:50.480 SEV=10 AUTHDECODE/4 RPT=3 Radius: Vector: 192 08/06/2002 16:45:50.480 SEV=10
AUTHDECODE/0 RPT=15 0000: E8317738 275469B7 A7D230C5 50CC8DE0 .lw8'Ti...0.P... 193 08/06/2002
16:45:50.480 SEV=10 AUTHDECODE/5 RPT=14 Radius: Type = 1 (0x01) User-Name 194 08/06/2002
16:45:50.480 SEV=10 AUTHDECODE/6 RPT=14 Radius: Length = 10 (0x0A) 195 08/06/2002 16:45:50.480
SEV=10 AUTHDECODE/7 RPT=6 Radius: Value (String) = 196 08/06/2002 16:45:50.480 SEV=10
AUTHDECODE/0 RPT=16 0000: 76706E75 73657231 vpnuser1 197 08/06/2002 16:45:50.480 SEV=10

AUTHDECODE/5 RPT=15 Radius: Type = 5 (0x05) NAS-Port 198 08/06/2002 16:45:50.480 SEV=10
AUTHDECODE/6 RPT=15 Radius: Length = 6 (0x06) 199 08/06/2002 16:45:50.480 SEV=10 AUTHDECODE/11
RPT=5 Radius: Value (Hex) = 0x41C 200 08/06/2002 16:45:50.480 SEV=10 AUTHDECODE/5 RPT=16 Radius:
Type = 6 (0x06) Service-Type 201 08/06/2002 16:45:50.480 SEV=10 AUTHDECODE/6 RPT=16 Radius:
Length = 6 (0x06) 202 08/06/2002 16:45:50.480 SEV=10 AUTHDECODE/11 RPT=6 Radius: Value (Hex) =
0x2 203 08/06/2002 16:45:50.480 SEV=10 AUTHDECODE/5 RPT=17 Radius: Type = 7 (0x07) Framed-
Protocol 204 08/06/2002 16:45:50.480 SEV=10 AUTHDECODE/6 RPT=17 Radius: Length = 6 (0x06) 205
08/06/2002 16:45:50.480 SEV=10 AUTHDECODE/11 RPT=7 Radius: Value (Hex) = 0x1 206 08/06/2002
16:45:50.480 SEV=10 AUTHDECODE/5 RPT=18 Radius: Type = 66 (0x42) Tunnel-Client-Endpoint 207
08/06/2002 16:45:50.480 SEV=10 AUTHDECODE/6 RPT=18 Radius: Length = 14 (0x0E) 208 08/06/2002
16:45:50.480 SEV=10 AUTHDECODE/7 RPT=7 Radius: Value (String) = 209 08/06/2002 16:45:50.480
SEV=10 AUTHDECODE/0 RPT=17 0000: 3137312E 36392E38 392E3930 171.69.89.90 210 08/06/2002
16:45:50.480 SEV=10 AUTHDECODE/5 RPT=19 Radius: Type = 26 (0x1A) Vendor-Specific 211 08/06/2002
16:45:50.480 SEV=10 AUTHDECODE/6 RPT=19 Radius: Length = 255 (0xFF) 212 08/06/2002 16:45:50.480
SEV=10 AUTHDECODE/10 RPT=4 Radius: Vendor ID = 311 (0x00000137) 213 08/06/2002 16:45:50.480
SEV=10 AUTHDECODE/5 RPT=20 Radius: Type = 6 (0x06) MS-CHAP-NT-Enc-PW 214 08/06/2002 16:45:50.480
SEV=10 AUTHDECODE/6 RPT=20 Radius: Length = 249 (0xF9) 215 08/06/2002 16:45:50.480 SEV=10
AUTHDECODE/7 RPT=8 Radius: Value (String) = 216 08/06/2002 16:45:50.480 SEV=10 AUTHDECODE/0
RPT=18 0000: 06010001 64BF9A72 CBB1FE1F 1FFA7D66d.r.....}f 0010: A60045BD 9769DD24
BAAFD68F CDF2BA9F ..E..i.\$..... 0020: 9B2CFABE 2BCC0D66 CF6251F6 E280F375 .+.+.f.bQ....u
0030: 02AD53E5 D6FB7648 C8D768CC C00FD1B1 ..S...vH..h.... 0040: 86C87217 E6DB7E45 5DB4EAB2
FE0C2F09 ..r...~E]...../. 0050: C25A359F 4DCAFE15 B8165B11 3D391101 .Z5.M.....[.=9. 0060:
444CB8E8 5BE47BDD 367F145D 578638A3 DL..[.{.6..]W.8. 0070: A8DC8D07 A029911D C3D839D6 12880394
.....)....9..... 0080: BFCB86DA F5DE706B 616FA285 6B0F2312pkao..k.#. 0090: 5BA566D2
153D9A88 D970EAA7 EEAE2453 [.f..=...p....\$S 00A0: DC28ECC7 C0B4F4C4 8BF04712 D68F3FCA
.(.....G...?. 00B0: 89F11100 3FA76070 2EE793E9 4EE10B7C?.`p....N..| 228 08/06/2002
16:45:50.480 SEV=10 AUTHDECODE/5 RPT=21 Radius: Type = 26 (0x1A) Vendor-Specific 229 08/06/2002
16:45:50.480 SEV=10 AUTHDECODE/6 RPT=21 Radius: Length = 255 (0xFF) 230 08/06/2002 16:45:50.480
SEV=10 AUTHDECODE/10 RPT=5 Radius: Vendor ID = 311 (0x00000137) 231 08/06/2002 16:45:50.480
SEV=10 AUTHDECODE/5 RPT=22 Radius: Type = 6 (0x06) MS-CHAP-NT-Enc-PW 232 08/06/2002 16:45:50.480
SEV=10 AUTHDECODE/6 RPT=22 Radius: Length = 249 (0xF9) 233 08/06/2002 16:45:50.480 SEV=10
AUTHDECODE/7 RPT=9 Radius: Value (String) = 234 08/06/2002 16:45:50.480 SEV=10 AUTHDECODE/0
RPT=19 0000: 06010002 424D1964 E0FCDA8 DE020FCF ...BM.d..... 0010: 141848C6 3080EE8C
098DCB0E C5FD7AD0 ..H.0.....z. 0020: 771E909B 78C84AA0 89CEAA5E D2727D24 w...x.J....^r}\$
0030: 67D195F9 85F8602E AAB5548 D0F29B5E g.....`..UH...^ 0040: E16380AF 941D7DC0 BD842962
5673BDBD .c....}...)bvS.. 0050: E8818EBE 271C7B4F 9E52A02F 8A6AAA8E'.{O.R./..j.. 0060:
D3E142B7 C60FDCE9 AECC4F81 7B926351 ..B.....O.{.cQ 0070: 375530C5 F8BFD23C 5E737129 4164C119
7U0....<^sq)Ad.. 0080: 4BF7C116 4EB4F82C 5FC2639E 2EAB8DD9 K...N..._.c..... 0090: 8DD129AC
84B21D0F 96E11B94 BBB78214 ..)..... 00A0: B2CED1D2 1758E20C 8462F884 26C3292E
.....X...b..&.. 00B0: D4BAC7F6 7812C981 B5309BE5 509877E5x....0..P.w. 246 08/06/2002
16:45:50.480 SEV=10 AUTHDECODE/5 RPT=23 Radius: Type = 26 (0x1A) Vendor-Specific 247 08/06/2002
16:45:50.480 SEV=10 AUTHDECODE/6 RPT=23 Radius: Length = 42 (0x2A) 248 08/06/2002 16:45:50.480
SEV=10 AUTHDECODE/10 RPT=6 Radius: Vendor ID = 311 (0x00000137) 249 08/06/2002 16:45:50.480
SEV=10 AUTHDECODE/5 RPT=24 Radius: Type = 6 (0x06) MS-CHAP-NT-Enc-PW 250 08/06/2002 16:45:50.480
SEV=10 AUTHDECODE/6 RPT=24 Radius: Length = 36 (0x24) 251 08/06/2002 16:45:50.480 SEV=10
AUTHDECODE/7 RPT=10 Radius: Value (String) = 252 08/06/2002 16:45:50.480 SEV=10 AUTHDECODE/0
RPT=20 0000: 06010003 47FD5D0E 1840AC0A F345102C ...G.]..@...E., 0010: ED6971DC 1F5CB1D7
609C5101 4724A804 .iq..\\..`Q.G\$. 0020: 9B9C .. 255 08/06/2002 16:45:50.480 SEV=10 AUTHDECODE/5
RPT=25 Radius: Type = 26 (0x1A) Vendor-Specific 256 08/06/2002 16:45:50.480 SEV=10 AUTHDECODE/6
RPT=25 Radius: Length = 24 (0x18) 257 08/06/2002 16:45:50.480 SEV=10 AUTHDECODE/10 RPT=7 Radius:
Vendor ID = 311 (0x00000137) 258 08/06/2002 16:45:50.480 SEV=10 AUTHDECODE/5 RPT=26 Radius: Type
= 11 (0x0B) MS-CHAP-Challenge 259 08/06/2002 16:45:50.480 SEV=10 AUTHDECODE/6 RPT=26 Radius:
Length = 18 (0x12) 260 08/06/2002 16:45:50.480 SEV=10 AUTHDECODE/7 RPT=11 Radius: Value (String)
= 261 08/06/2002 16:45:50.480 SEV=10 AUTHDECODE/0 RPT=21 0000: A7129F8C 8F87FA68 3D3D0A73
E70E3AB0h==.s... 262 08/06/2002 16:45:50.480 SEV=10 AUTHDECODE/5 RPT=27 Radius: Type =
26 (0x1A) Vendor-Specific 263 08/06/2002 16:45:50.480 SEV=10 AUTHDECODE/6 RPT=27 Radius: Length
= 76 (0x4C) 264 08/06/2002 16:45:50.480 SEV=10 AUTHDECODE/10 RPT=8 Radius: Vendor ID = 311
(0x00000137) 265 08/06/2002 16:45:50.480 SEV=10 AUTHDECODE/5 RPT=28 Radius: Type = 27 (0x1B) MS-
CHAP2-CPW 266 08/06/2002 16:45:50.480 SEV=10 AUTHDECODE/6 RPT=28 Radius: Length = 70 (0x46) 267
08/06/2002 16:45:50.480 SEV=10 AUTHDECODE/7 RPT=12 Radius: Value (String) = 268 08/06/2002
16:45:50.480 SEV=10 AUTHDECODE/0 RPT=22 0000: 07014E5D FC26F8E9 2F90A59B C04963DA
..N].&./....Ic. 0010: 048662B6 A996DD49 62AE05FA 5AAFFDDA ..b...Ib...Z... 0020: 96A90000
00000000 0000EF4A 06BB0405J.... 0030: A003F44A F8B81E05 B22506A4 6259979C
...J.....%.bY.. 0040: 5F510000 _Q.. 273 08/06/2002 16:45:50.480 SEV=10 AUTHDECODE/5 RPT=29

Radius: Type = 4 (0x04) NAS-IP-Address 274 08/06/2002 16:45:50.480 SEV=10 AUTHDECODE/6 RPT=29
Radius: Length = 6 (0x06) 275 08/06/2002 16:45:50.490 SEV=10 AUTHDECODE/9 RPT=2 Radius: Value
(IP Address) = 172.16.172.36 (0xAC10AC24) 276 08/06/2002 16:45:50.490 SEV=10 AUTHDECODE/5 RPT=30
Radius: Type = 61 (0x3D) NAS-Port-Type 277 08/06/2002 16:45:50.490 SEV=10 AUTHDECODE/6 RPT=30
Radius: Length = 6 (0x06) 278 08/06/2002 16:45:50.490 SEV=10 AUTHDECODE/11 RPT=8 Radius: Value
(Hex) = 0x5 279 08/06/2002 16:45:50.490 SEV=8 AUTHDBG/28 RPT=65 Radius_Xmt(9aa46fc) 280
08/06/2002 16:45:50.490 SEV=9 AUTHDBG/71 RPT=304 xmit_cnt = 1 281 08/06/2002 16:45:50.680 SEV=8
AUTHDBG/30 RPT=65 Radius_Match(9aa46fc, 71e7df4), id = 0x23, rcvd = 0x23 **282 08/06/2002**
16:45:50.680 SEV=8 AUTHDBG/63 RPT=304 AUTH_RcvReply(9aa46fc, 0, 0) 283 08/06/2002 16:45:50.680
SEV=8 AUTHDBG/31 RPT=130 Radius_Decode(71e7df4, 213) 284 08/06/2002 16:45:50.680 SEV=13
AUTHDECODE/0 RPT=23 0000: 022300D5 EF3B5E72 2E31AF7C 7D305207 .#...;^r.1.}|0R. 0010: 27ADA143
07060000 00010606 00000002 '.C..... 0020: 19204920 05160000 01370001 AB45593C . I
.....7...EY< 0030: 01C2037B 9CB17432 00000000 00000023 ...{.t2.....# 0040: 1A2A0000 01371124
80293506 D58538BE .*...7.\$.)5...8. 0050: 93D9BB03 17133616 C55D4C6F CE5D88486..]Lo.].H
0060: 82BAB54B DF490416 84271A2A 00000137 ...K.I...'.*...7 0070: 1024802A F7F3D930 56008345
580C49D5 .\$.*...0V..EX.I. 0080: 414E8B6F 4FABD2EB 65A99BB3 2032E3DB AN.oO...e... 2.. 0090:
792C0750 1A330000 01371A2D 01533D33 y,.P.3...7.-.S=3 00A0: 37333630 41343233 44384145 42423132
7360A423D8AEBB12 00B0: 33324239 36413545 36433741 45443938 32B96A5E6C7AED98 296 08/06/2002
16:45:50.680 SEV=10 AUTHDECODE/1 RPT=4 Radius: Code = 2 (0x02) 297 08/06/2002 16:45:50.680
SEV=10 AUTHDECODE/2 RPT=4 Radius: Identifier = 35 (0x23) 298 08/06/2002 16:45:50.680 SEV=10
AUTHDECODE/3 RPT=4 Radius: Length = 213 (0x00D5) 299 08/06/2002 16:45:50.680 SEV=10 AUTHDECODE/4
RPT=4 Radius: Vector: 300 08/06/2002 16:45:50.680 SEV=10 AUTHDECODE/0 RPT=24 0000: EF3B5E72
2E31AF7C 7D305207 27ADA143 .;^r.1.}|0R.'.C 301 08/06/2002 16:45:50.680 SEV=10 AUTHDECODE/5
RPT=31 Radius: Type = 7 (0x07) Framed-Protocol 302 08/06/2002 16:45:50.680 SEV=10 AUTHDECODE/6
RPT=31 Radius: Length = 6 (0x06) 303 08/06/2002 16:45:50.680 SEV=10 AUTHDECODE/11 RPT=9 Radius:
Value (Hex) = 0x1 304 08/06/2002 16:45:50.680 SEV=10 AUTHDECODE/5 RPT=32 Radius: Type = 6 (0x06)
Service-Type 305 08/06/2002 16:45:50.680 SEV=10 AUTHDECODE/6 RPT=32 Radius: Length = 6 (0x06)
306 08/06/2002 16:45:50.680 SEV=10 AUTHDECODE/11 RPT=10 Radius: Value (Hex) = 0x2 307 08/06/2002
16:45:50.680 SEV=10 AUTHDECODE/5 RPT=33 Radius: Type = 25 (0x19) Class 308 08/06/2002
16:45:50.680 SEV=10 AUTHDECODE/6 RPT=33 Radius: Length = 32 (0x20) 309 08/06/2002 16:45:50.680
SEV=10 AUTHDECODE/7 RPT=13 Radius: Value (String) = 310 08/06/2002 16:45:50.680 SEV=10
AUTHDECODE/0 RPT=25 0000: 49200516 00000137 0001AB45 593C01C2 I7...EY<.. 0010: 037B9CB1
74320000 00000000 0023 .{.t2.....# 312 08/06/2002 16:45:50.680 SEV=10 AUTHDECODE/5 RPT=34
Radius: Type = 26 (0x1A) Vendor-Specific 313 08/06/2002 16:45:50.680 SEV=10 AUTHDECODE/6 RPT=34
Radius: Length = 42 (0x2A) 314 08/06/2002 16:45:50.680 SEV=10 AUTHDECODE/10 RPT=9 Radius: Vendor
ID = 311 (0x00000137) 315 08/06/2002 16:45:50.680 SEV=10 AUTHDECODE/5 RPT=35 Radius: Type = 17
(0x11) MS-MPPE-Recv-Key 316 08/06/2002 16:45:50.680 SEV=10 AUTHDECODE/6 RPT=35 Radius: Length =
36 (0x24) 317 08/06/2002 16:45:50.680 SEV=10 AUTHDECODE/7 RPT=14 Radius: Value (String) = 318
08/06/2002 16:45:50.680 SEV=10 AUTHDECODE/0 RPT=26 0000: 80293506 D58538BE 93D9BB03 17133616
)5...8.....6. 0010: C55D4C6F CE5D8848 82BAB54B DF490416 .]Lo.].H...K.I.. 0020: 8427 .' 321
08/06/2002 16:45:50.680 SEV=10 AUTHDECODE/5 RPT=36 Radius: Type = 26 (0x1A) Vendor-Specific 322
08/06/2002 16:45:50.680 SEV=10 AUTHDECODE/6 RPT=36 Radius: Length = 42 (0x2A) 323 08/06/2002
16:45:50.680 SEV=10 AUTHDECODE/10 RPT=10 Radius: Vendor ID = 311 (0x00000137) 324 08/06/2002
16:45:50.680 SEV=10 AUTHDECODE/5 RPT=37 Radius: Type = 16 (0x10) MS-MPPE-Send-Key 325 08/06/2002
16:45:50.680 SEV=10 AUTHDECODE/6 RPT=37 Radius: Length = 36 (0x24) 326 08/06/2002 16:45:50.680
SEV=10 AUTHDECODE/7 RPT=15 Radius: Value (String) = 327 08/06/2002 16:45:50.680 SEV=10
AUTHDECODE/0 RPT=27 0000: 802AF7F3 D9305600 8345580C 49D5414E .*...0V..EX.I.AN 0010: 8B6F4FAB
D2EB65A9 9BB32032 E3DB792C .oO...e... 2..y, 0020: 0750 .P 330 08/06/2002 16:45:50.680 SEV=10
AUTHDECODE/5 RPT=38 Radius: Type = 26 (0x1A) Vendor-Specific 331 08/06/2002 16:45:50.680 SEV=10
AUTHDECODE/6 RPT=38 Radius: Length = 51 (0x33) **332 08/06/2002 16:45:50.680 SEV=10 AUTHDECODE/10**
RPT=11 Radius: Vendor ID = 311 (0x00000137) 333 08/06/2002 16:45:50.680 SEV=10 AUTHDECODE/5
RPT=39 Radius: Type = 26 (0x1A) MS-CHAP2-Success 334 08/06/2002 16:45:50.680 SEV=10 AUTHDECODE/6
RPT=39 Radius: Length = 45 (0x2D) 335 08/06/2002 16:45:50.680 SEV=10 AUTHDECODE/7 RPT=16 Radius:
Value (String) = 336 08/06/2002 16:45:50.680 SEV=10 AUTHDECODE/0 RPT=28 0000: 01533D33 37333630
41343233 44384145 .S=37360A423D8AE 0010: 42423132 33324239 36413545 36433741 BB1232B96A5E6C7A
0020: 45443938 45313841 453032 ED98E18AE02 339 08/06/2002 16:45:50.680 SEV=10 AUTHDECODE/5
RPT=40 Radius: Type = 26 (0x1A) Vendor-Specific 340 08/06/2002 16:45:50.680 SEV=10 AUTHDECODE/6
RPT=40 Radius: Length = 14 (0x0E) 341 08/06/2002 16:45:50.680 SEV=10 AUTHDECODE/10 RPT=12
Radius: Vendor ID = 311 (0x00000137) 342 08/06/2002 16:45:50.680 SEV=10 AUTHDECODE/5 RPT=41
Radius: Type = 10 (0x0A) Unknown 343 08/06/2002 16:45:50.680 SEV=10 AUTHDECODE/6 RPT=41 Radius:
Length = 8 (0x08) 344 08/06/2002 16:45:50.680 SEV=8 AUTHDBG/29 RPT=65 Radius_Rcv(9aa46fc) 345
08/06/2002 16:45:50.680 SEV=9 AUTHDBG/32 RPT=8 Radius: Discarding unknown Vendor Specific
Attribute: vid = 311, type = 10 346 08/06/2002 16:45:50.680 SEV=8 AUTHDBG/66 RPT=304
AUTH_DeleteTimer(9aa46fc, 0, 0) 347 08/06/2002 16:45:50.680 SEV=9 AUTHDBG/74 RPT=304 Reply timer

stopped: handle = 5A100016, timestamp = 355274964 348 08/06/2002 16:45:50.680 SEV=8 AUTHDBG/58
RPT=304 AUTH_Callback(9aa46fc, 0, 0) 349 08/06/2002 16:45:50.680 SEV=6 AUTH/4 RPT=18
171.69.89.90 Authentication successful: handle = 103, server = 171.69.89.60, user = vpnuser1 350
08/06/2002 16:45:50.680 SEV=8 AUTHDBG/3 RPT=305 AUTH_PutAttrTable(103, 19bfc54) 351 08/06/2002
16:45:50.680 SEV=8 AUTHDBG/60 RPT=304 AUTH_UnbindServer(9aa46fc, 0, 0) 352 08/06/2002
16:45:50.680 SEV=9 AUTHDBG/70 RPT=304 Auth Server 18cela4 has been unbound from ACB 9aa46fc,
sessions = 0 353 08/06/2002 16:45:50.680 SEV=8 AUTHDBG/59 RPT=305 AUTH_BindServer(9aa46fc, 0, 0)
354 08/06/2002 16:45:50.680 SEV=9 AUTHDBG/69 RPT=305 Auth Server 18cdfa4 has been bound to ACB
9aa46fc, sessions = 1 355 08/06/2002 16:45:50.680 SEV=8 AUTHDBG/65 RPT=305
AUTH_CreateTimer(9aa46fc, 0, 0) 356 08/06/2002 16:45:50.680 SEV=9 AUTHDBG/72 RPT=305 Reply timer
created: handle = 5A110016 357 08/06/2002 16:45:50.680 SEV=8 AUTHDBG/61 RPT=305>
AUTH_BuildMsg(9aa46fc, 0, 0)> 358 08/06/2002 16:45:50.680 SEV=8 AUTHDBG/64 RPT=305
AUTH_StartTimer(9aa46fc, 0, 0) 359 08/06/2002 16:45:50.680 SEV=9 AUTHDBG/73 RPT=305 Reply timer
started: handle = 5A110016, timestamp = 355274964, timeout = 30000 360 08/06/2002 16:45:50.680
SEV=8 AUTHDBG/62 RPT=305 AUTH_SndRequest(9aa46fc, 0, 0)> 361 08/06/2002 16:45:50.680 SEV=8
AUTHDBG/50 RPT=479 IntDB_Decode(2ea1004, 57) 362 08/06/2002 16:45:50.680 SEV=10 AUTHDECODE/12
RPT=11 IntDB: Type = 1 (0x01) User-Name 363 08/06/2002 16:45:50.680 SEV=10 AUTHDECODE/13 RPT=11
IntDB: Length = 11 (0x0B) 364 08/06/2002 16:45:50.680 SEV=10 AUTHDECODE/14 RPT=5 IntDB: Value
(String) = 365 08/06/2002 16:45:50.680 SEV=10 AUTHDECODE/0 RPT=29 0000: 77696E64 6F777375 736572
windowsuser 366 08/06/2002 16:45:50.680 SEV=8 AUTHDBG/47 RPT=479 IntDB_Xmt(9aa46fc) 367
08/06/2002 16:45:50.680 SEV=9 AUTHDBG/71 RPT=305 xmit_cnt = 1 368 08/06/2002 16:45:50.680 SEV=8
AUTHDBG/47 RPT=480 IntDB_Xmt(9aa46fc) 369 08/06/2002 16:45:50.780 SEV=8 AUTHDBG/49 RPT=240
IntDB_Match(9aa46fc, 62f1c4c) 370 08/06/2002 16:45:50.780 SEV=8 AUTHDBG/63 RPT=305
AUTH_RcvReply(9aa46fc, 0, 0) 371 08/06/2002 16:45:50.780 SEV=8 AUTHDBG/50 RPT=480
IntDB_Decode(62f1c4c, 170) 372 08/06/2002 16:45:50.780 SEV=10 AUTHDECODE/12 RPT=12 IntDB: Type =
1 (0x01) User-Name 373 08/06/2002 16:45:50.780 SEV=10 AUTHDECODE/13 RPT=12 IntDB: Length = 11
(0x0B) 374 08/06/2002 16:45:50.780 SEV=10 AUTHDECODE/14 RPT=6 IntDB: Value (String) = 375
08/06/2002 16:45:50.780 SEV=10 AUTHDECODE/0 RPT=30 0000: 77696E64 6F777375 736572 windowsuser
376 08/06/2002 16:45:50.780 SEV=10 AUTHDECODE/12 RPT=13 IntDB: Type = 4109 (0x100D) IPsec-
Authentication 377 08/06/2002 16:45:50.780 SEV=10 AUTHDECODE/13 RPT=13 IntDB: Length = 4 (0x04)
378 08/06/2002 16:45:50.780 SEV=10 AUTHDECODE/15 RPT=7 IntDB: Value (Integer) = 6 (0x0006) 379
08/06/2002 16:45:50.780 SEV=10 AUTHDECODE/12 RPT=14 IntDB: Type = 4123 (0x101B) Split-Tunnel-
Inclusion-List 380 08/06/2002 16:45:50.780 SEV=10 AUTHDECODE/13 RPT=14 IntDB: Length = 4 (0x04)
381 08/06/2002 16:45:50.780 SEV=10 AUTHDECODE/14 RPT=7 IntDB: Value (String) = 382 08/06/2002
16:45:50.780 SEV=10 AUTHDECODE/0 RPT=31 0000: 74657374 test 383 08/06/2002 16:45:50.780 SEV=10
AUTHDECODE/12 RPT=15 IntDB: Type = 4151 (0x1037) Split-Tunneling-Policy 384 08/06/2002
16:45:50.780 SEV=10 AUTHDECODE/13 RPT=15 IntDB: Length = 4 (0x04) 385 08/06/2002 16:45:50.780
SEV=10 AUTHDECODE/15 RPT=8 IntDB: Value (Integer) = 1 (0x0001) 386 08/06/2002 16:45:50.780 SEV=8
AUTHDBG/48 RPT=240 IntDB_Rcv(9aa46fc) 387 08/06/2002 16:45:50.780 SEV=8 AUTHDBG/66 RPT=305
AUTH_DeleteTimer(9aa46fc, 0, 0) 388 08/06/2002 16:45:50.780 SEV=9 AUTHDBG/74 RPT=305 Reply timer
stopped: handle = 5A110016, timestamp = 355274974 389 08/06/2002 16:45:50.780 SEV=8 AUTHDBG/58
RPT=305 AUTH_Callback(9aa46fc, 0, 0) 390 08/06/2002 16:45:50.780 SEV=6 AUTH/41 RPT=219
171.69.89.90 Authentication successful: handle = 103, server = Internal, group = windowsuser 391
08/06/2002 16:45:50.780 SEV=8 AUTHDBG/3 RPT=306 AUTH_PutAttrTable(103, 19bfc54) 392 08/06/2002
16:45:50.780 SEV=8 AUTHDBG/60 RPT=305 AUTH_UnbindServer(9aa46fc, 0, 0) 393 08/06/2002
16:45:50.780 SEV=9 AUTHDBG/70 RPT=305 Auth Server 18cdfa4 has been unbound from ACB 9aa46fc,
sessions = 0 394 08/06/2002 16:45:50.780 SEV=8 AUTHDBG/59 RPT=306 AUTH_BindServer(9aa46fc, 0, 0)
395 08/06/2002 16:45:50.780 SEV=9 AUTHDBG/69 RPT=306 Auth Server 18cdfa4 has been bound to ACB
9aa46fc, sessions = 1 396 08/06/2002 16:45:50.780 SEV=8 AUTHDBG/65 RPT=306
AUTH_CreateTimer(9aa46fc, 0, 0) 397 08/06/2002 16:45:50.780 SEV=9 AUTHDBG/72 RPT=306 Reply timer
created: handle = 5A120016 398 08/06/2002 16:45:50.780 SEV=8 AUTHDBG/61 RPT=306
AUTH_BuildMsg(9aa46fc, 0, 0) 399 08/06/2002 16:45:50.780 SEV=8 AUTHDBG/64 RPT=306
AUTH_StartTimer(9aa46fc, 0, 0) 400 08/06/2002 16:45:50.780 SEV=9 AUTHDBG/73 RPT=306 Reply timer
started: handle = 5A120016, timestamp = 355274974, timeout = 30000 401 08/06/2002 16:45:50.780
SEV=8 AUTHDBG/62 RPT=306 AUTH_SndRequest(9aa46fc, 0, 0) 402 08/06/2002 16:45:50.780 SEV=8
AUTHDBG/50 RPT=481 IntDB_Decode(2e8aa34, 57) 403 08/06/2002 16:45:50.780 SEV=10 AUTHDECODE/12
RPT=16 IntDB: Type = 1 (0x01) User-Name 404 08/06/2002 16:45:50.780 SEV=10 AUTHDECODE/13 RPT=16
IntDB: Length = 11 (0x0B) 405 08/06/2002 16:45:50.780 SEV=10 AUTHDECODE/14 RPT=8 IntDB: Value
(String) = 406 08/06/2002 16:45:50.780 SEV=10 AUTHDECODE/0 RPT=32 0000: 77696E64 6F777375 736572
windowsuser 407 08/06/2002 16:45:50.780 SEV=8 AUTHDBG/47 RPT=481 IntDB_Xmt(9aa46fc) 408
08/06/2002 16:45:50.780 SEV=9 AUTHDBG/71 RPT=306 xmit_cnt = 1 409 08/06/2002 16:45:50.780 SEV=8
AUTHDBG/47 RPT=482 IntDB_Xmt(9aa46fc) 410 08/06/2002 16:45:50.880 SEV=8 AUTHDBG/49 RPT=241
IntDB_Match(9aa46fc, 62fd1a8) 411 08/06/2002 16:45:50.880 SEV=8 AUTHDBG/63 RPT=306
AUTH_RcvReply(9aa46fc, 0, 0) 412 08/06/2002 16:45:50.880 SEV=8 AUTHDBG/50 RPT=482

IntDB_Decode(62fd1a8, 170) 413 08/06/2002 16:45:50.880 SEV=10 AUTHDECODE/12 RPT=17 IntDB: Type = 1 (0x01) User-Name 414 08/06/2002 16:45:50.880 SEV=10 AUTHDECODE/13 RPT=17 IntDB: Length = 11 (0x0B) 415 08/06/2002 16:45:50.880 SEV=10 AUTHDECODE/14 RPT=9 IntDB: Value (String) = 416 08/06/2002 16:45:50.880 SEV=10 AUTHDECODE/0 RPT=33 0000: 77696E64 6F777375 736572 windowsuser 417 08/06/2002 16:45:50.880 SEV=10 AUTHDECODE/12 RPT=18 IntDB: Type = 4109 (0x100D) IPsec-Authentication 418 08/06/2002 16:45:50.880 SEV=10 AUTHDECODE/13 RPT=18 IntDB: Length = 4 (0x04) 419 08/06/2002 16:45:50.880 SEV=10 AUTHDECODE/15 RPT=9 IntDB: Value (Integer) = 6 (0x0006) 420 08/06/2002 16:45:50.880 SEV=10 AUTHDECODE/12 RPT=19 IntDB: Type = 4123 (0x101B) Split-Tunnel-Inclusion-List 421 08/06/2002 16:45:50.880 SEV=10 AUTHDECODE/13 RPT=19 IntDB: Length = 4 (0x04) 422 08/06/2002 16:45:50.880 SEV=10 AUTHDECODE/14 RPT=10 IntDB: Value (String) = 423 08/06/2002 16:45:50.880 SEV=10 AUTHDECODE/0 RPT=34 0000: 74657374 test 424 08/06/2002 16:45:50.880 SEV=10 AUTHDECODE/12 RPT=20 IntDB: Type = 4151 (0x1037) Split-Tunneling-Policy 425 08/06/2002 16:45:50.880 SEV=10 AUTHDECODE/13 RPT=20 IntDB: Length = 4 (0x04) 426 08/06/2002 16:45:50.880 SEV=10 AUTHDECODE/15 RPT=10 IntDB: Value (Integer) = 1 (0x0001) 427 08/06/2002 16:45:50.880 SEV=8 AUTHDBG/48 RPT=241 IntDB_Rcv(9aa46fc) 428 08/06/2002 16:45:50.880 SEV=8 AUTHDBG/66 RPT=306 AUTH_DeleteTimer(9aa46fc, 0, 0) 429 08/06/2002 16:45:50.880 SEV=9 AUTHDBG/74 RPT=306 Reply timer stopped: handle = 5A120016, timestamp = 355274984 430 08/06/2002 16:45:50.880 SEV=8 AUTHDBG/58 RPT=306 AUTH_Callback(9aa46fc, 0, 0) 431 08/06/2002 16:45:50.880 SEV=6 AUTH/41 RPT=220 171.69.89.90 Authentication successful: handle = 103, server = Internal, group = windowsuser 432 08/06/2002 16:45:50.880 SEV=8 AUTHDBG/4 RPT=291 AUTH_GetAttrTable(103, 743aa8) 433 08/06/2002 16:45:50.880 SEV=8 AUTHDBG/4 RPT=292 AUTH_GetAttrTable(103, 743ad8) 434 08/06/2002 16:45:50.880 SEV=8 AUTHDBG/4 RPT=293 AUTH_GetAttrTable(103, 742a30) 435 08/06/2002 16:45:50.880 SEV=8 AUTHDBG/2 RPT=264 AUTH_Close(103) 436 08/06/2002 16:45:50.880 SEV=4 IKE/52 RPT=19 171.69.89.90 Group [windowsuser] User [vpnuser1] User (vpnuser1) authenticated. 437 08/06/2002 16:45:50.880 SEV=8 AUTHDBG/60 RPT=306 AUTH_UnbindServer(9aa46fc, 0, 0) 438 08/06/2002 16:45:50.880 SEV=9 AUTHDBG/70 RPT=306 Auth Server 18cdfa4 has been unbound from ACB 9aa46fc, sessions = 0 439 08/06/2002 16:45:50.880 SEV=8 AUTHDBG/10 RPT=264 AUTH_Int_FreeAuthCB(9aa46fc) 440 08/06/2002 16:45:50.880 SEV=7 AUTH/13 RPT=265 Authentication session closed: handle = 103 441 08/06/2002 16:45:50.900 SEV=6 IKE/130 RPT=30 171.69.89.90 Group [windowsuser] User [vpnuser1] Received unsupported transaction mode attribute: 5 443 08/06/2002 16:45:50.930 SEV=4 AUTH/22 RPT=286 User vpnuser1 connected 444 08/06/2002 16:45:50.930 SEV=4 IKE/119 RPT=23 171.69.89.90 Group [windowsuser] User [vpnuser1] PHASE 1 COMPLETED 445 08/06/2002 16:45:50.930 SEV=6 IKE/121 RPT=23 171.69.89.90 Keep-alive type for this connection: DPD 446 08/06/2002 16:45:50.930 SEV=5 IKE/25 RPT=27 171.69.89.90 Group [windowsuser] User [vpnuser1] Received remote Proxy Host data in ID Payload: Address 10.10.10.1, Protocol 0, Port 0 449 08/06/2002 16:45:50.930 SEV=5 IKE/24 RPT=23 171.69.89.90 Group [windowsuser] User [vpnuser1] Received local Proxy Host data in ID Payload: Address 172.16.172.36, Protocol 0, Port 0 452 08/06/2002 16:45:50.930 SEV=5 IKE/66 RPT=27 171.69.89.90 Group [windowsuser] User [vpnuser1] IKE Remote Peer configured for SA: ESP-3DES-MD5 454 08/06/2002 16:45:50.930 SEV=5 IKE/75 RPT=27 171.69.89.90 Group [windowsuser] User [vpnuser1] Overriding Initiator's IPsec rekeying duration from 2147483 to 28800 seconds 456 08/06/2002 16:45:50.940 SEV=4 IKE/49 RPT=27 171.69.89.90 Group [windowsuser] User [vpnuser1] Security negotiation complete for User (vpnuser1) Responder, Inbound SPI = 0x36291f3d, Outbound SPI = 0x07345e3e 459 08/06/2002 16:45:50.940 SEV=8 AUTHDBG/1 RPT=265 AUTH_Open() returns 104 460 08/06/2002 16:45:50.940 SEV=7 AUTH/12 RPT=266 Authentication session opened: handle = 104 461 08/06/2002 16:45:50.940 SEV=8 AUTHDBG/3 RPT=307 AUTH_PutAttrTable(104, 1b3b748) 462 08/06/2002 16:45:50.940 SEV=8 AUTHDBG/7 RPT=31 AUTH_Accounting(104, 0, 0) 463 08/06/2002 16:45:50.940 SEV=4 IKE/120 RPT=27 171.69.89.90 Group [windowsuser] User [vpnuser1] PHASE 2 COMPLETED (msgid=ed3clf7c) 464 08/06/2002 16:45:50.940 SEV=8 AUTHDBG/59 RPT=307 AUTH_BindServer(9a9blec, 0, 0) 465 08/06/2002 16:45:50.940 SEV=9 AUTHDBG/69 RPT=307 Acct Server 1811fa4 has been bound to ACB 9a9blec, sessions = 1 466 08/06/2002 16:45:50.940 SEV=8 AUTHDBG/65 RPT=307 AUTH_CreateTimer(9a9blec, 0, 0) 467 08/06/2002 16:45:50.940 SEV=9 AUTHDBG/72 RPT=307 Reply timer created: handle = 5A180017 468 08/06/2002 16:45:50.940 SEV=8 AUTHDBG/61 RPT=307 AUTH_BuildMsg(9a9blec, 0, 0) 469 08/06/2002 16:45:50.940 SEV=8 AUTHDBG/27 RPT=66 Radius_Build(9a9blec) 470 08/06/2002 16:45:50.940 SEV=8 AUTHDBG/64 RPT=307 AUTH_StartTimer(9a9blec, 0, 0) 471 08/06/2002 16:45:50.940 SEV=9 AUTHDBG/73 RPT=307 Reply timer started: handle = 5A180017, timestamp = 355274990, timeout = 1000 472 08/06/2002 16:45:50.940 SEV=8 AUTHDBG/62 RPT=307 AUTH_SndRequest(9a9blec, 0, 0) 473 08/06/2002 16:45:50.940 SEV=8 AUTHDBG/31 RPT=131 Radius_Decode(62f2324, 140) 474 08/06/2002 16:45:50.940 SEV=13 AUTHDECODE/0 RPT=35 0000: 043A008C 0A49A1AF C3022A50 B74B0B97 :...I...*P.K.. 0010: 887AFEC1 010A7670 6E757365 72310506 .z....vpnuser1.. 0020: 0000041C 06060000 00020706 00000001 0030: 08060A0A 0A011920 49200516 00000137 I7 0040: 0001AB45 593C01C2 037B9CB1 74320000 ...EY<...{..t2.. 0050: 00000000 00232806 00000001 2C0A3345#(.....3E 0060: 35303030 3144420E 3137312E 36392E38 50001DB.171.69.8 0070: 392E3930 2D060000 00012906 00000000 9.90-.....)..... 0080: 0406AC10 AC243D06 00000005\$=..... 483 08/06/2002 16:45:50.940

SEV=10 AUTHDECODE/1 RPT=5 Radius: Code = 4 (0x04) 484 08/06/2002 16:45:50.940 SEV=10
AUTHDECODE/2 RPT=5 Radius: Identifier = 58 (0x3A) 485 08/06/2002 16:45:50.940 SEV=10
AUTHDECODE/3 RPT=5 Radius: Length = 140 (0x008C) 486 08/06/2002 16:45:50.940 SEV=10 AUTHDECODE/4
RPT=5 Radius: Vector: 487 08/06/2002 16:45:50.940 SEV=10 AUTHDECODE/0 RPT=36 0000: 0A49A1AF
C3022A50 B74B0B97 887AFEC1 .I...*P.K...z.. 488 08/06/2002 16:45:50.940 SEV=10 AUTHDECODE/5
RPT=42 Radius: Type = 1 (0x01) User-Name 489 08/06/2002 16:45:50.940 SEV=10 AUTHDECODE/6 RPT=42
Radius: Length = 10 (0x0A) 490 08/06/2002 16:45:50.940 SEV=10 AUTHDECODE/7 RPT=17 Radius: Value
(String) = 491 08/06/2002 16:45:50.940 SEV=10 AUTHDECODE/0 RPT=37 0000: 76706E75 73657231
vpuser1 492 08/06/2002 16:45:50.940 SEV=10 AUTHDECODE/5 RPT=43 Radius: Type = 5 (0x05) NAS-Port
493 08/06/2002 16:45:50.940 SEV=10 AUTHDECODE/6 RPT=43 Radius: Length = 6 (0x06) 494 08/06/2002
16:45:50.940 SEV=10 AUTHDECODE/11 RPT=11 Radius: Value (Hex) = 0x41C 495 08/06/2002 16:45:50.940
SEV=10 AUTHDECODE/5 RPT=44 Radius: Type = 6 (0x06) Service-Type 496 08/06/2002 16:45:50.940
SEV=10 AUTHDECODE/6 RPT=44 Radius: Length = 6 (0x06) 497 08/06/2002 16:45:50.940 SEV=10
AUTHDECODE/11 RPT=12 Radius: Value (Hex) = 0x2 498 08/06/2002 16:45:50.940 SEV=10 AUTHDECODE/5
RPT=45 Radius: Type = 7 (0x07) Framed-Protocol 499 08/06/2002 16:45:50.940 SEV=10 AUTHDECODE/6
RPT=45 Radius: Length = 6 (0x06) 500 08/06/2002 16:45:50.940 SEV=10 AUTHDECODE/11 RPT=13 Radius:
Value (Hex) = 0x1 501 08/06/2002 16:45:50.940 SEV=10 AUTHDECODE/5 RPT=46 Radius: Type = 8 (0x08)
Framed-IP-Address 502 08/06/2002 16:45:50.940 SEV=10 AUTHDECODE/6 RPT=46 Radius: Length = 6
(0x06) 503 08/06/2002 16:45:50.940 SEV=10 AUTHDECODE/9 RPT=3 Radius: Value (IP Address) =
10.10.10.1 (0x0A0A0A01) 504 08/06/2002 16:45:50.940 SEV=10 AUTHDECODE/5 RPT=47 Radius: Type = 25
(0x19) Class 505 08/06/2002 16:45:50.940 SEV=10 AUTHDECODE/6 RPT=47 Radius: Length = 32 (0x20)
506 08/06/2002 16:45:50.940 SEV=10 AUTHDECODE/7 RPT=18 Radius: Value (String) = 507 08/06/2002
16:45:50.940 SEV=10 AUTHDECODE/0 RPT=38 0000: 49200516 00000137 0001AB45 593C01C2 I
.....7...EY<.. 0010: 037B9CB1 74320000 00000000 0023 .{..t.....# 509 08/06/2002 16:45:50.940
SEV=10 AUTHDECODE/5 RPT=48 Radius: Type = 40 (0x28) Acct-Status-Type 510 08/06/2002 16:45:50.940
SEV=10 AUTHDECODE/6 RPT=48 Radius: Length = 6 (0x06) 511 08/06/2002 16:45:50.940 SEV=10
AUTHDECODE/11 RPT=14 Radius: Value (Hex) = 0x1 512 08/06/2002 16:45:50.940 SEV=10 AUTHDECODE/5
RPT=49 Radius: Type = 44 (0x2C) Acct-Session-Id 513 08/06/2002 16:45:50.940 SEV=10 AUTHDECODE/6
RPT=49 Radius: Length = 10 (0x0A) 514 08/06/2002 16:45:50.940 SEV=10 AUTHDECODE/7 RPT=19 Radius:
Value (String) = 515 08/06/2002 16:45:50.940 SEV=10 AUTHDECODE/0 RPT=39 0000: 33453530 30303144
3E50001D 516 08/06/2002 16:45:50.940 SEV=10 AUTHDECODE/5 RPT=50 Radius: Type = 66 (0x42) Tunnel-
Client-Endpoint 517 08/06/2002 16:45:50.940 SEV=10 AUTHDECODE/6 RPT=50 Radius: Length = 14
(0x0E) 518 08/06/2002 16:45:50.940 SEV=10 AUTHDECODE/7 RPT=20 Radius: Value (String) = 519
08/06/2002 16:45:50.940 SEV=10 AUTHDECODE/0 RPT=40 0000: 3137312E 36392E38 392E3930 171.69.89.90
520 08/06/2002 16:45:50.940 SEV=10 AUTHDECODE/5 RPT=51 Radius: Type = 45 (0x2D) Acct-Authentic
521 08/06/2002 16:45:50.940 SEV=10 AUTHDECODE/6 RPT=51 Radius: Length = 6 (0x06) 522 08/06/2002
16:45:50.940 SEV=10 AUTHDECODE/11 RPT=15 Radius: Value (Hex) = 0x1 523 08/06/2002 16:45:50.940
SEV=10 AUTHDECODE/5 RPT=52 Radius: Type = 41 (0x29) Acct-Delay-Time 524 08/06/2002 16:45:50.940
SEV=10 AUTHDECODE/6 RPT=52 Radius: Length = 6 (0x06) 525 08/06/2002 16:45:50.940 SEV=10
AUTHDECODE/11 RPT=16 Radius: Value (Hex) = 0x0 526 08/06/2002 16:45:50.940 SEV=10 AUTHDECODE/5
RPT=53 Radius: Type = 4 (0x04) NAS-IP-Address 527 08/06/2002 16:45:50.940 SEV=10 AUTHDECODE/6
RPT=53 Radius: Length = 6 (0x06) 528 08/06/2002 16:45:50.940 SEV=10 AUTHDECODE/9 RPT=4 Radius:
Value (IP Address) = 172.16.172.36 (0xAC10AC24) 529 08/06/2002 16:45:50.940 SEV=10 AUTHDECODE/5
RPT=54 Radius: Type = 61 (0x3D) NAS-Port-Type 530 08/06/2002 16:45:50.940 SEV=10 AUTHDECODE/6
RPT=54 Radius: Length = 6 (0x06) 531 08/06/2002 16:45:50.940 SEV=10 AUTHDECODE/11 RPT=17 Radius:
Value (Hex) = 0x5 532 08/06/2002 16:45:50.940 SEV=8 AUTHDBG/28 RPT=66 Radius_Xmt(9a9blec) 533
08/06/2002 16:45:50.940 SEV=9 AUTHDBG/71 RPT=307 xmit_cnt = 1 534 08/06/2002 16:45:51.040 SEV=8
AUTHDBG/30 RPT=66 Radius_Match(9a9blec, 500aacc), id = 0x3A, rcvd = 0x3A 535 08/06/2002
16:45:51.040 SEV=8 AUTHDBG/63 RPT=307 AUTH_RcvReply(9a9blec, 0, 0) 536 08/06/2002 16:45:51.040
SEV=8 AUTHDBG/31 RPT=132 Radius_Decode(500aacc, 20) 537 08/06/2002 16:45:51.040 SEV=13
AUTHDECODE/0 RPT=41 0000: 053A0014 7DE07642 671D26FA 5B2E1904 ...}.vBg.&.[... 0010: 943FA41A
.?. 539 08/06/2002 16:45:51.040 SEV=10 AUTHDECODE/1 RPT=6 Radius: Code = 5 (0x05) 540
08/06/2002 16:45:51.040 SEV=10 AUTHDECODE/2 RPT=6 Radius: Identifier = 58 (0x3A) 541 08/06/2002
16:45:51.040 SEV=10 AUTHDECODE/3 RPT=6 Radius: Length = 20 (0x0014) 542 08/06/2002 16:45:51.040
SEV=10 AUTHDECODE/4 RPT=6 Radius: Vector: 543 08/06/2002 16:45:51.040 SEV=10 AUTHDECODE/0 RPT=42
0000: 7DE07642 671D26FA 5B2E1904 943FA41A }.vBg.&.[...?. 544 08/06/2002 16:45:51.040 SEV=8
AUTHDBG/29 RPT=66 Radius_Rcv(9a9blec) 545 08/06/2002 16:45:51.040 SEV=8 AUTHDBG/66 RPT=307
AUTH_DeleteTimer(9a9blec, 0, 0) 546 08/06/2002 16:45:51.040 SEV=9 AUTHDBG/74 RPT=307 Reply timer
stopped: handle = 5A180017, timestamp = 355275000 547 08/06/2002 16:45:51.040 SEV=8 AUTHDBG/58
RPT=307 AUTH_Callback(9a9blec, 0, 0) 548 08/06/2002 16:45:51.040 SEV=6 AUTH/10 RPT=31
171.69.89.90 Accounting successful: handle = 104, server = 171.69.89.154, user = vpuser1 549
08/06/2002 16:45:51.040 SEV=8 AUTHDBG/2 RPT=265 AUTH_Close(104) 550 08/06/2002 16:45:51.040
SEV=8 AUTHDBG/60 RPT=307 AUTH_UnbindServer(9a9blec, 0, 0) 551 08/06/2002 16:45:51.040 SEV=9
AUTHDBG/70 RPT=307 Acct Server 1811fa4 has been unbound from ACB 9a9blec, sessions = 0 552

08/06/2002 16:45:51.040 SEV=8 AUTHDBG/10 RPT=265 AUTH_Int_FreeAuthCB(9a9b1ec) 553 08/06/2002
16:45:51.040 SEV=7 AUTH/13 RPT=266 Authentication session closed: handle = 104 554 08/06/2002
16:45:54.890 SEV=5 IKE/50 RPT=37 171.69.89.90 Group [windowsuser] User [vpuser1] Connection
terminated for peer vpuser1 (Peer Terminate) Remote Proxy 10.10.10.1, Local Proxy 172.16.172.36
557 08/06/2002 16:45:54.890 SEV=8 AUTHDBG/1 RPT=266 AUTH_Open() returns 105 558 08/06/2002
16:45:54.890 SEV=7 AUTH/12 RPT=267 Authentication session opened: handle = 105 559 08/06/2002
16:45:54.890 SEV=8 AUTHDBG/3 RPT=308 AUTH_PutAttrTable(105, 1b3b730) 560 08/06/2002 16:45:54.890
SEV=8 AUTHDBG/7 RPT=32 AUTH_Accounting(105, 0, 0) 561 08/06/2002 16:45:54.890 SEV=4 AUTH/28
RPT=23 171.69.89.90 User [vpuser1] disconnected: Duration: 0:00:03 Bytes xmt: 0 Bytes rcv: 0
Reason: User Requested 563 08/06/2002 16:45:54.890 SEV=8 AUTHDBG/59 RPT=308
AUTH_BindServer(9a043f0, 0, 0) 564 08/06/2002 16:45:54.890 SEV=9 AUTHDBG/69 RPT=308 Acct Server
1811fa4 has been bound to ACB 9a043f0, sessions = 1 565 08/06/2002 16:45:54.890 SEV=8 AUTHDBG/65
RPT=308 AUTH_CreateTimer(9a043f0, 0, 0) 566 08/06/2002 16:45:54.890 SEV=9 AUTHDBG/72 RPT=308
Reply timer created: handle = 5A19001B 567 08/06/2002 16:45:54.890 SEV=8 AUTHDBG/61 RPT=308
AUTH_BuildMsg(9a043f0, 0, 0) 568 08/06/2002 16:45:54.890 SEV=8 AUTHDBG/27 RPT=67
Radius_Build(9a043f0) 569 08/06/2002 16:45:54.890 SEV=8 AUTHDBG/64 RPT=308
AUTH_StartTimer(9a043f0, 0, 0) 570 08/06/2002 16:45:54.890 SEV=9 AUTHDBG/73 RPT=308 Reply timer
started: handle = 5A19001B, timestamp = 355275385, timeout = 1000 571 08/06/2002 16:45:54.890
SEV=8 AUTHDBG/62 RPT=308 AUTH_SndRequest(9a043f0, 0, 0) 572 08/06/2002 16:45:54.890 SEV=8
AUTHDBG/31 RPT=133 Radius_Decode(630894c, 176) 573 08/06/2002 16:45:54.890 SEV=13 AUTHDECODE/0
RPT=43 0000: 043B00B0 295505F0 864A0A1F 6345232B ;..)U...J..cE# 0010: 81D315E5 010A7670
6E757365 72310506vpuser1.. 0020: 0000041C 06060000 00020706 00000001
0030: 08060A0A 0A011920 49200516 00000137 I7 0040: 0001AB45 593C01C2 037B9CB1
74320000 ...EY<...{.t2.. 0050: 00000000 00232806 00000002 2A060000#(.....*... 0060:
00002B06 00000000 2C0A3345 35303030 ..+.....,3E5000 0070: 31442E06 00000004 2F060000 00003006
1D...../.....0. 0080: 00000000 31060000 0001420E 3137312E1.....B.171. 0090: 36392E38
392E3930 2D060000 00012906 69.89.90-.....). 00A0: 00000000 0406AC10 AC243D06 00000005
.....\$=..... 584 08/06/2002 16:45:54.890 SEV=10 AUTHDECODE/1 RPT=7 Radius: Code = 4 (0x04)
585 08/06/2002 16:45:54.890 SEV=10 AUTHDECODE/2 RPT=7 Radius: Identifier = 59 (0x3B) 586
08/06/2002 16:45:54.890 SEV=10 AUTHDECODE/3 RPT=7 Radius: Length = 176 (0x00B0) 587 08/06/2002
16:45:54.890 SEV=10 AUTHDECODE/4 RPT=7 Radius: Vector: 588 08/06/2002 16:45:54.890 SEV=10
AUTHDECODE/0 RPT=44 0000: 295505F0 864A0A1F 6345232B 81D315E5)U...J..cE#..... 589 08/06/2002
16:45:54.890 SEV=10 AUTHDECODE/5 RPT=55 Radius: Type = 1 (0x01) User-Name 590 08/06/2002
16:45:54.890 SEV=10 AUTHDECODE/6 RPT=55 Radius: Length = 10 (0x0A) 591 08/06/2002 16:45:54.890
SEV=10 AUTHDECODE/7 RPT=21 Radius: Value (String) = 592 08/06/2002 16:45:54.890 SEV=10
AUTHDECODE/0 RPT=45 0000: 76706E75 73657231 vpuser1 593 08/06/2002 16:45:54.900 SEV=10
AUTHDECODE/5 RPT=56 Radius: Type = 5 (0x05) NAS-Port 594 08/06/2002 16:45:54.900 SEV=10
AUTHDECODE/6 RPT=56 Radius: Length = 6 (0x06) 595 08/06/2002 16:45:54.900 SEV=10 AUTHDECODE/11
RPT=18 Radius: Value (Hex) = 0x41C 596 08/06/2002 16:45:54.900 SEV=10 AUTHDECODE/5 RPT=57
Radius: Type = 6 (0x06) Service-Type 597 08/06/2002 16:45:54.900 SEV=10 AUTHDECODE/6 RPT=57
Radius: Length = 6 (0x06) 598 08/06/2002 16:45:54.900 SEV=10 AUTHDECODE/11 RPT=19 Radius: Value
(Hex) = 0x2 599 08/06/2002 16:45:54.900 SEV=10 AUTHDECODE/5 RPT=58 Radius: Type = 7 (0x07)
Framed-Protocol 600 08/06/2002 16:45:54.900 SEV=10 AUTHDECODE/6 RPT=58 Radius: Length = 6 (0x06)
601 08/06/2002 16:45:54.900 SEV=10 AUTHDECODE/11 RPT=20 Radius: Value (Hex) = 0x1 602 08/06/2002
16:45:54.900 SEV=10 AUTHDECODE/5 RPT=59 Radius: Type = 8 (0x08) Framed-IP-Address 603 08/06/2002
16:45:54.900 SEV=10 AUTHDECODE/6 RPT=59 Radius: Length = 6 (0x06) 604 08/06/2002 16:45:54.900
SEV=10 AUTHDECODE/9 RPT=5 Radius: Value (IP Address) = 10.10.10.1 (0x0A0A0A01) 605 08/06/2002
16:45:54.900 SEV=10 AUTHDECODE/5 RPT=60 Radius: Type = 25 (0x19) Class 606 08/06/2002
16:45:54.900 SEV=10 AUTHDECODE/6 RPT=60 Radius: Length = 32 (0x20) 607 08/06/2002 16:45:54.900
SEV=10 AUTHDECODE/7 RPT=22 Radius: Value (String) = 608 08/06/2002 16:45:54.900 SEV=10
AUTHDECODE/0 RPT=46 0000: 49200516 00000137 0001AB45 593C01C2 I7...EY<... 0010: 037B9CB1
74320000 00000000 0023 .{.t2.....# 610 08/06/2002 16:45:54.900 SEV=10 AUTHDECODE/5 RPT=61
Radius: Type = 40 (0x28) Acct-Status-Type 611 08/06/2002 16:45:54.900 SEV=10 AUTHDECODE/6 RPT=61
Radius: Length = 6 (0x06) 612 08/06/2002 16:45:54.900 SEV=10 AUTHDECODE/11 RPT=21 Radius: Value
(Hex) = 0x2 613 08/06/2002 16:45:54.900 SEV=10 AUTHDECODE/5 RPT=62 Radius: Type = 42 (0x2A)
Acct-Input-Octets 614 08/06/2002 16:45:54.900 SEV=10 AUTHDECODE/6 RPT=62 Radius: Length = 6
(0x06) 615 08/06/2002 16:45:54.900 SEV=10 AUTHDECODE/11 RPT=22 Radius: Value (Hex) = 0x0 616
08/06/2002 16:45:54.900 SEV=10 AUTHDECODE/5 RPT=63 Radius: Type = 43 (0x2B) Acct-Output-Octets
617 08/06/2002 16:45:54.900 SEV=10 AUTHDECODE/6 RPT=63 Radius: Length = 6 (0x06) 618 08/06/2002
16:45:54.900 SEV=10 AUTHDECODE/11 RPT=23 Radius: Value (Hex) = 0x0 619 08/06/2002 16:45:54.900
SEV=10 AUTHDECODE/5 RPT=64 Radius: Type = 44 (0x2C) Acct-Session-Id 620 08/06/2002 16:45:54.900
SEV=10 AUTHDECODE/6 RPT=64 Radius: Length = 10 (0x0A) 621 08/06/2002 16:45:54.900 SEV=10
AUTHDECODE/7 RPT=23 Radius: Value (String) = 622 08/06/2002 16:45:54.900 SEV=10 AUTHDECODE/0
RPT=47 0000: 33453530 30303144 3E50001D 623 08/06/2002 16:45:54.900 SEV=10 AUTHDECODE/5 RPT=65

Radius: Type = 46 (0x2E) Acct-Session-Time 624 08/06/2002 16:45:54.900 SEV=10 AUTHDECODE/6
RPT=65 Radius: Length = 6 (0x06) 625 08/06/2002 16:45:54.900 SEV=10 AUTHDECODE/11 RPT=24 Radius:
Value (Hex) = 0x4 626 08/06/2002 16:45:54.900 SEV=10 AUTHDECODE/5 RPT=66 Radius: Type = 47
(0x2F) Acct-Input-Packets 627 08/06/2002 16:45:54.900 SEV=10 AUTHDECODE/6 RPT=66 Radius: Length
= 6 (0x06) 628 08/06/2002 16:45:54.900 SEV=10 AUTHDECODE/11 RPT=25 Radius: Value (Hex) = 0x0 629
08/06/2002 16:45:54.900 SEV=10 AUTHDECODE/5 RPT=67 Radius: Type = 48 (0x30) Acct-Output-Packets
630 08/06/2002 16:45:54.900 SEV=10 AUTHDECODE/6 RPT=67 Radius: Length = 6 (0x06) 631 08/06/2002
16:45:54.900 SEV=10 AUTHDECODE/11 RPT=26 Radius: Value (Hex) = 0x0 632 08/06/2002 16:45:54.900
SEV=10 AUTHDECODE/5 RPT=68 Radius: Type = 49 (0x31) Acct-Terminate-Cause 633 08/06/2002
16:45:54.900 SEV=10 AUTHDECODE/6 RPT=68 Radius: Length = 6 (0x06) 634 08/06/2002 16:45:54.900
SEV=10 AUTHDECODE/11 RPT=27 Radius: Value (Hex) = 0x1 635 08/06/2002 16:45:54.900 SEV=10
AUTHDECODE/5 RPT=69 Radius: Type = 66 (0x42) Tunnel-Client-Endpoint 636 08/06/2002 16:45:54.900
SEV=10 AUTHDECODE/6 RPT=69 Radius: Length = 14 (0x0E) 637 08/06/2002 16:45:54.900 SEV=10
AUTHDECODE/7 RPT=24 Radius: Value (String) = 638 08/06/2002 16:45:54.900 SEV=10 AUTHDECODE/0
RPT=48 0000: 3137312E 36392E38 392E3930 171.69.89.90 639 08/06/2002 16:45:54.900 SEV=10
AUTHDECODE/5 RPT=70 Radius: Type = 45 (0x2D) Acct-Authentic 640 08/06/2002 16:45:54.900 SEV=10
AUTHDECODE/6 RPT=70 Radius: Length = 6 (0x06) 641 08/06/2002 16:45:54.900 SEV=10 AUTHDECODE/11
RPT=28 Radius: Value (Hex) = 0x1 642 08/06/2002 16:45:54.900 SEV=10 AUTHDECODE/5 RPT=71 Radius:
Type = 41 (0x29) Acct-Delay-Time 643 08/06/2002 16:45:54.900 SEV=10 AUTHDECODE/6 RPT=71 Radius:
Length = 6 (0x06) 644 08/06/2002 16:45:54.900 SEV=10 AUTHDECODE/11 RPT=29 Radius: Value (Hex) =
0x0 645 08/06/2002 16:45:54.900 SEV=10 AUTHDECODE/5 RPT=72 Radius: Type = 4 (0x04) NAS-IP-
Address 646 08/06/2002 16:45:54.900 SEV=10 AUTHDECODE/6 RPT=72 Radius: Length = 6 (0x06) 647
08/06/2002 16:45:54.900 SEV=10 AUTHDECODE/9 RPT=6 Radius: Value (IP Address) = 172.16.172.36
(0xAC10AC24) 648 08/06/2002 16:45:54.900 SEV=10 AUTHDECODE/5 RPT=73 Radius: Type = 61 (0x3D)
NAS-Port-Type 649 08/06/2002 16:45:54.900 SEV=10 AUTHDECODE/6 RPT=73 Radius: Length = 6 (0x06)
650 08/06/2002 16:45:54.900 SEV=10 AUTHDECODE/11 RPT=30 Radius: Value (Hex) = 0x5 651 08/06/2002
16:45:54.900 SEV=8 AUTHDBG/28 RPT=67 Radius_Xmt(9a043f0) 652 08/06/2002 16:45:54.900 SEV=9
AUTHDBG/71 RPT=308 xmit_cnt = 1 653 08/06/2002 16:45:54.900 SEV=6 IKE/38 RPT=31 171.69.89.90
Header invalid, missing SA payload! (next payload = 8) 654 08/06/2002 16:45:54.900 SEV=8
AUTHDBG/30 RPT=67 Radius_Match(9a043f0, 5009d58), id = 0x3B, rcvd = 0x3B 655 08/06/2002
16:45:54.900 SEV=8 AUTHDBG/63 RPT=308 AUTH_RcvReply(9a043f0, 0, 0) 656 08/06/2002 16:45:54.900
SEV=8 AUTHDBG/31 RPT=134 Radius_Decode(5009d58, 20) 657 08/06/2002 16:45:54.900 SEV=13
AUTHDECODE/0 RPT=49 0000: 053B0014 A7C83B83 2EA5C679 FB0B4540 .;....;....y..E@ 0010: 4F1A83EB
O... 659 08/06/2002 16:45:54.900 SEV=10 AUTHDECODE/1 RPT=8 Radius: Code = 5 (0x05) 660
08/06/2002 16:45:54.900 SEV=10 AUTHDECODE/2 RPT=8 Radius: Identifier = 59 (0x3B) 661 08/06/2002
16:45:54.900 SEV=10 AUTHDECODE/3 RPT=8 Radius: Length = 20 (0x0014) 662 08/06/2002 16:45:54.900
SEV=10 AUTHDECODE/4 RPT=8 Radius: Vector: 663 08/06/2002 16:45:54.900 SEV=10 AUTHDECODE/0 RPT=50
0000: A7C83B83 2EA5C679 FB0B4540 4F1A83EB .;....y..E@O... 664 08/06/2002 16:45:54.900 SEV=8
AUTHDBG/29 RPT=67 Radius_Rcv(9a043f0) 665 08/06/2002 16:45:54.900 SEV=8 AUTHDBG/66 RPT=308
AUTH_DeleteTimer(9a043f0, 0, 0) 666 08/06/2002 16:45:54.900 SEV=9 AUTHDBG/74 RPT=308 Reply timer
stopped: handle = 5A19001B, timestamp = 355275395 667 08/06/2002 16:45:54.900 SEV=8 AUTHDBG/58
RPT=308 AUTH_Callback(9a043f0, 0, 0) 668 08/06/2002 16:45:54.900 SEV=6 AUTH/10 RPT=32
171.69.89.90 Accounting successful: handle = 105, server = 171.69.89.154, user = vpnuser1 669
08/06/2002 16:45:54.900 SEV=8 AUTHDBG/2 RPT=266 AUTH_Close(105) 670 08/06/2002 16:45:54.900
SEV=8 AUTHDBG/60 RPT=308 AUTH_UnbindServer(9a043f0, 0, 0) 671 08/06/2002 16:45:54.900 SEV=9
AUTHDBG/70 RPT=308 Acct Server 1811fa4 has been unbound from ACB 9a043f0, sessions = 0 672
08/06/2002 16:45:54.900 SEV=8 AUTHDBG/10 RPT=266 AUTH_Int_FreeAuthCB(9a043f0) 673 08/06/2002
16:45:54.900 SEV=7 AUTH/13 RPT=267 Authentication session closed: handle = 105

相关信息

- [Cisco VPN 3000 系列集中器支持页](#)
- [Cisco VPN 3000 系列客户端支持页](#)
- [IPSec 支持页面](#)
- [技术支持 - Cisco Systems](#)