

如何使用数字证书在路由器和 PIX 之间配置 LAN 到 LAN IPsec

目录

[简介](#)

[开始使用前](#)

[规则](#)

[先决条件](#)

[使用的组件](#)

[背景理论](#)

[网络图](#)

[配置路由器和 PIX 防火墙](#)

[配置](#)

[获得证书](#)

[在路由器上获得证书](#)

[在 PIX 上获得证书](#)

[验证](#)

[路由器 show 命令输出示例](#)

[PIX show 命令输出示例](#)

[故障排除](#)

[故障排除命令](#)

[路由器上的证书调试示例](#)

[PIX 上的证书调试示例](#)

[路由器上的 IPsec 调试示例](#)

[PIX 上的 IPsec 调试示例](#)

[潜在问题](#)

[删除证书和 RSA 密钥对](#)

[相关信息](#)

简介

本文说明如何配置Cisco路由器和Cisco安全PIX防火墙，以实施使用数字证书的LAN到LAN的IPsec。要实现此配置，您需要执行以下任务：

1. 配置路由器和 PIX。
2. 获取路由器和 PIX 上的数字证书。
3. 在路由器和PIX上配置IKE和IPsec策略，定义使用访问控制列表上的IPsec可以加密什么数据流(触发数据流)。

[开始使用前](#)

[规则](#)

有关文档规则的详细信息，请参阅 [Cisco 技术提示规则](#)。

[先决条件](#)

本文档没有任何特定的前提条件。

[使用的组件](#)

本文档中的信息基于以下软件和硬件版本。

- Cisco 1700 路由器
- Cisco IOS® 软件版本 12.2(6)
- Cisco PIX 防火墙 520
- PIX 防火墙版本 6.0.1。

本文档中的信息都是基于特定实验室环境中的设备创建的。本文档中使用的所有设备最初均采用原始（默认）配置。如果您是在真实网络上操作，请确保您在使用任何命令前已经了解其潜在影响。

[背景理论](#)

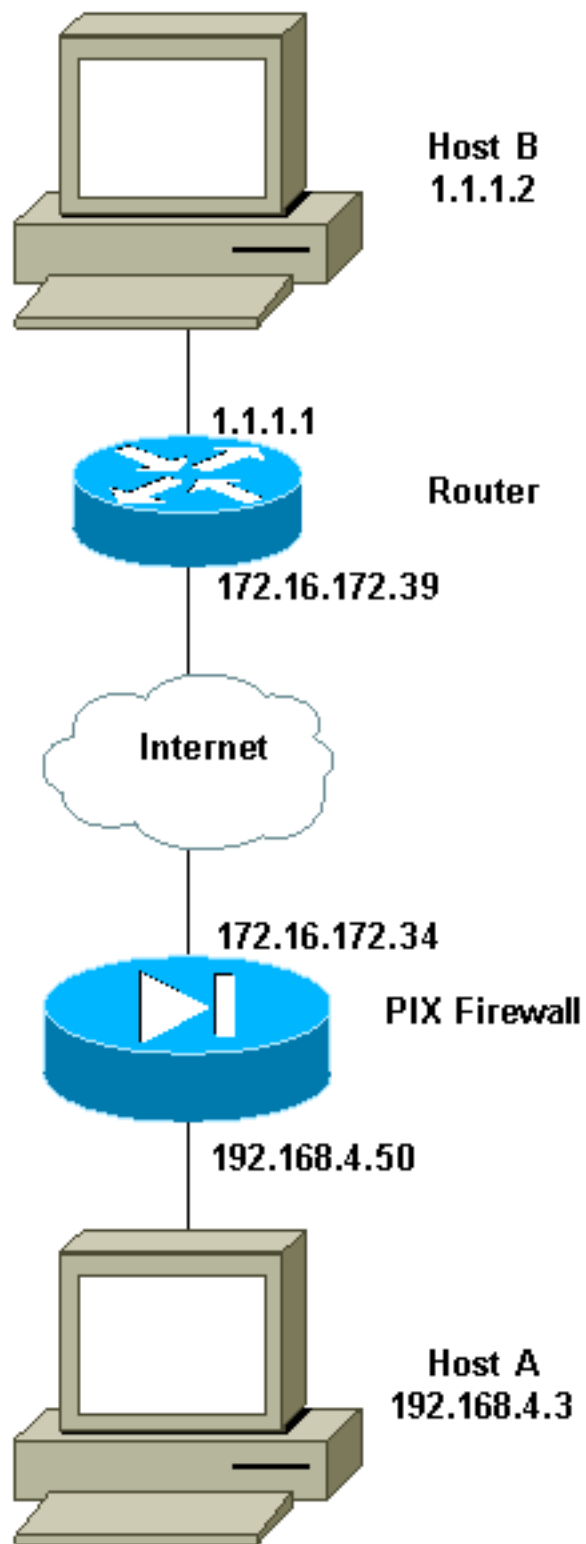
在示例中，我们已经将主机A的网络地址（源地址）和主机B的网络地址（目的地地址）定义为IPSec在PIX上加密的数据流。路由器上的访问列表是PIX上的访问列表的镜像。

我们已经配置PIX和路由器，以便驻留在二个设备LAN内部的主机在通过IPSec隧道时，可以使用它们的专用地址。在PIX上，**access-list** 和 **nat 0** 命令协同工作。当192.168.4.0网络的主机A进入1.1.1.0网络时，访问控制列表允许192.168.4.0网络流量在不带网络地址转换(NAT)的情况下进行加密。然而，当那些相同的用户去别处时，他们通过端口地址转换(PAT)转换到地址172.16.172.57上。在路由器上，**route-map**及**access-list**命令允许1.1.1.0网络流量在没有NAT的情况下被加密。然而，当同一个主机B别处时，它们通过PAT被转换到地址172.16.172.39上。

要测试该配置，我们从PIX防火墙后的主机A到路由器后的主机B进行拼通。当IP信息包到达PIX防火墙时，它会匹配**access-list**，然后启动IPSec协商。因此，在IPSec协商期间，PIX是发起者，而路由器是回应者。为了实现故障排除目的，您需要检查PIX和路由器加密调试。

[网络图](#)

本文档使用下图所示的网络设置。



[配置路由器和 PIX 防火墙](#)

[配置](#)

本部分提供有关如何配置本文档所述功能的信息。

- [路由器示例配置](#)
- [PIX 示例配置](#)

路由器示例配置

```
1720-1#show running-config
Building configuration...

.
Current configuration : 8694 bytes
!
! Last configuration change at 20:17:48 PST Thu Jan 10
2002
! NVRAM config last updated at 20:19:27 PST Thu Jan 10
2002
!
version 12.2
no parser cache
service timestamps debug uptime
service timestamps log uptime
no service password-encryption
!
hostname 1720-1
!
no logging buffered
enable secret 5 $1$6jAs$tNxI1a/2DYFAtPLyCDXjo/
enable password ww
!
username cisco password 0 cisco
username all
memory-size iomem 15
clock timezone PST -8
ip subnet-zero
no ip domain-lookup
ip domain-name cisco.com
!
ip ssh time-out 120
ip ssh authentication-retries 3
!
!
!
crypto ca identity vpn
  enrollment retry count 20
  enrollment mode ra
  enrollment url http://171.69.89.16:80
  query url ldap://171.69.89.16
crypto ca certificate chain vpn
  certificate 3B2FD652
    308202C4 3082022D A0030201 0202043B 2FD65230 0D06092A
864886F7 0D010105
    0500302D 310B3009 06035504 06130275 73310E30 0C060355
040A1305 63697363
    6F310E30 0C060355 040B1305 736A7670 6E301E17 0D303230
31313130 33303631
    345A170D 30333031 31313033 33363134 5A304E31 0B300906
03550406 13027573
    310E300C 06035504 0A130563 6973636F 310E300C 06035504
0B130573 6A76706E
    311F301D 06092A86 4886F70D 01090216 10313732 302D312E
63697363 6F2E636F
    6D305C30 0D06092A 864886F7 0D010101 0500034B 00304802
4100A085 B4A756F8
    CEB91F2E 52E2A23F 847EC95F 44F65AF2 EBC1F816 081CC61F
AB077482 F1FAD124
    2444B9F6 6B9EC48E 1B1EB5B9 D0E802BA B9A57048 EBB8CD18
773F0203 010001A3
    82011230 82010E30 0B060355 1D0F0404 030205A0 301B0603
551D1104 14301282
```

10313732 302D312E 63697363 6F2E636F 6D302B06 03551D10
04243022 800F3230
30323031 31313033 30363134 5A810F32 30303230 39323331
35333631 345A304F
0603551D 1F044830 463044A0 42A040A4 3E303C31 0B300906
03550406 13027573
310E300C 06035504 0A130563 6973636F 310E300C 06035504
0B130573 6A76706E
310D300B 06035504 03130443 524C3130 1F060355 1D230418
30168014 46C1609C
DBEA53EE 80A48060 1A96583B 0DF80D2F 301D0603 551D0E04
160414B1 2707AB30
F7CFDC79 C554D1AE 3208EF16 CF96ED30 09060355 1D130402
30003019 06092A86
4886F67D 07410004 0C300A1B 0456352E 30030204 B0300D06
092A8648 86F70D01
01050500 03818100 E82DE82B AE5C7F80 EB9CED1A 306F36E6
437DA791 81D53CF3
0E561C8A 7A168EDE 6728F371 3EB90B21 CC40E1F3 CA4ED98F
CDFA6E15 A2C0AA38
4AE137C7 281AA7EC AD26D550 4E4AAA0B E0C588F8 661C4031
ACF35F7B 28330B64
667E00E3 832AED7F 08D5EA3D 33CCB2BE E73DC41A B40A9B64
4CD2D98C 6943AE84
55605741 E136A6BD
quit
certificate ra-sign 3B2FD319
308202FF 30820268 A0030201 0202043B 2FD31930 0D06092A
864886F7 0D010105
0500302D 310B3009 06035504 06130275 73310E30 0C060355
040A1305 63697363
6F310E30 0C060355 040B1305 736A7670 6E301E17 0D303130
36313932 32303333
315A170D 30343036 31393232 33333331 5A304531 0B300906
03550406 13027573
310E300C 06035504 0A130563 6973636F 310E300C 06035504
0B130573 6A76706E
31163014 06035504 03130D46 69727374 204F6666 69636572
30819F30 0D06092A
864886F7 0D010101 05000381 8D003081 89028181 00E85434
395790E9 416ED13D
72F1A411 333A0984 66B8F68A 0ECA7E2B CBC40C39 A21E2D8A
5F94772D 69846720
73227891 E43D46B6 B2D1DDC5 385C5135 DB2075F1 4D252ACF
AC80DA4C 2111946F
26F7193B 8EA1CA66 8332D2A1 5310B2D7 07C985A8 0B44CE37
BC95EAFB C328D4C6
73B3B35E 0F6D25F5 DCAC6AFA 2DAAD6D1 47BB3396 E1020301
0001A382 01123082
010E300B 0603551D 0F040403 02078030 2B060355 1D100424
3022800F 32303031
30363139 32323033 33315A81 0F323030 33303732 37303233
3333315A 301B0603
551D0904 14301230 1006092A 864886F6 7D07441D 31030201
00304F06 03551D1F
04483046 3044A042 A040A43E 303C310B 30090603 55040613
02757331 0E300C06
0355040A 13056369 73636F31 0E300C06 0355040B 1305736A
76706E31 0D300B06
03550403 13044352 4C31301F 0603551D 23041830 16801446
C1609CDB EA53EE80
A480601A 96583B0D F80D2F30 1D060355 1D0E0416 04147BD2
620C611F 3AC69FB3
155FD8F9 8A7CF353 3A583009 0603551D 13040230 00301906

092A8648 86F67D07
4100040C 300A1B04 56352E30 030204B0 300D0609 2A864886
F70D0101 05050003
8181003A A6431D7D 1979DDF9 CC99D8F8 CC987F67 DBF67280
2A9418E9 C6255B08
DECDE1C2 50FCB1A6 544F1D51 C214162E E2403DAB 2F1294C4
841240ED FD6F799C
130A0B24 AC74DD74 C60EB5CD EC648631 E0B88B3F 3D19A2E1
6492958E 9F64746E
45C080AE E5A6C245 7827D7B1 380A6FE8 A01D9022 7F52AD9C
B596743A 853549C5 771DA2
quit
certificate ra-encrypt 3B2FD318
308202D0 30820239 A0030201 0202043B 2FD31830 0D06092A
864886F7 0D010105
0500302D 310B3009 06035504 06130275 73310E30 0C060355
040A1305 63697363
6F310E30 0C060355 040B1305 736A7670 6E301E17 0D303130
36313932 32303333

315A170D 30343036 31393232 33333331 5A304531 0B300906
03550406 13027573
310E300C 06035504 0A130563 6973636F 310E300C 06035504
0B130573 6A76706E
31163014 06035504 03130D46 69727374 204F6666 69636572
30819F30 0D06092A
864886F7 0D010101 05000381 8D003081 89028181 00BFC427
727E15E9 30CB1BCB
C0EFFB2F 3E4916D4 EC365F57 C13D1356 6388E66D 7BCCBCB9
04DA2E7C C9639F31
AF15E7B1 E698A33C 0EB447E4 B3B72EC8 766EADCF 9883E612
AD782E39 B0603A90
0322CE78 D6735E07 BDC022F1 1164EC9E 31FC5309 9AA9DC1D
69ECC316 8727A6CB
ADCFB488 FF904D6D 9D9E5778 05B24D4B BB5B4F5F 4D020301
0001A381 E43081E1
300B0603 551D0F04 04030205 20301B06 03551D09 04143012
30100609 2A864886
F67D0744 1D310302 0100304F 0603551D 1F044830 463044A0
42A040A4 3E303C31
0B300906 03550406 13027573 310E300C 06035504 0A130563
6973636F 310E300C
06035504 0B130573 6A76706E 310D300B 06035504 03130443
524C3130 1F060355
1D230418 30168014 46C1609C DBEA53EE 80A48060 1A96583B
0DF80D2F 301D0603
551D0E04 16041400 A7C3DD9F 9FAB0A25 E1485FC7 DB88A63F
78CE4830 09060355
1D130402 30003019 06092A86 4886F67D 07410004 0C300A1B
0456352E 30030204
B0300D06 092A8648 86F70D01 01050500 03818100 69105382
0BE0BA59 B0CD2652
9C6A4585 940C7882 DCEB1D1E 610B8525 0C032A76 2C8758C2
F5CA1EF4 B946848A
C49047D5 6D1EF218 FA082A00 16CCD9FC 42DF3B05 A8EF2AAD
151637DE 67885BB2
BA0BB6A1 308F63FF 21C3CB00 9272257A 3C292645 FD62D486
C247F067 301C2FEE
5CF6D12B 6CFA1DAA E74E8B8E 5B017A2E 5BB6C5F9
quit
certificate ca 3B2FD307
308202E4 3082024D A0030201 0202043B 2FD30730 0D06092A
864886F7 0D010105
0500302D 310B3009 06035504 06130275 73310E30 0C060355

```
040A1305 63697363
 6F310E30 0C060355 040B1305 736A7670 6E301E17 0D303130
36313932 32303234
 305A170D 32313036 31393232 33323430 5A302D31 0B300906
03550406 13027573
 310E300C 06035504 0A130563 6973636F 310E300C 06035504
0B130573 6A76706E
 30819F30 0D06092A 864886F7 0D010101 05000381 8D003081
89028181 00E8C25B
 EDF4A6EE A352B142 C16578F4 FBDAF45E 4F2F7733 8D2B8879
96138C63 1DB713BF
 753BF845 2D7E600F AAF4D75B 9E959513 BB13FF13 36696F48
86C464F2 CF854A66
 4F8E83F8 025F216B A44D4BB2 39ADD1A5 1BCCF812 09A19BDC
468EEAE1 B6C2A378
 69C81348 1A9CD61C 551216F2 8B168FBB 94CBEF37 E1D9A8F7
80BBC17F D1020301
 0001A382 010F3082 010B3011 06096086 480186F8 42010104
04030200 07304F06
 03551D1F 04483046 3044A042 A040A43E 303C310B 30090603
55040613 02757331
 0E300C06 0355040A 13056369 73636F31 0E300C06 0355040B
1305736A 76706E31
 0D300B06 03550403 13044352 4C31302B 0603551D 10042430
22800F32 30303130
 36313932 32303234 305A810F 32303231 30363139 32323332
34305A30 0B060355
 1D0F0404 03020106 301F0603 551D2304 18301680 1446C160
9CDBEA53 EE80A480
 601A9658 3B0DF80D 2F301D06 03551D0E 04160414 46C1609C
DBEA53EE 80A48060
 1A96583B 0DF80D2F 300C0603 551D1304 05300301 01FF301D
06092A86 4886F67D
 07410004 10300E1B 0856352E 303A342E 30030204 90300D06
092A8648 86F70D01
 01050500 03818100 7E3DBAC4 8CAE7D5A B19C0625 8780D222
F965A1A2 C0C25B84
 CBC5A203 BF50FAC4 9656699A 52D8CB46 40776237 87163118
8F3C0F47 D2CAA36B
 6AB34F99 AB71269E 78C0AC10 DA0B9EC5 AE448B46 701254CF
3EBC64C1 5DBB2EE5
 56C0140B B0C83497 D79FB148 80018F51 3A4B6174 590B85AA
9CE3B391 629406AA
 7CE9CC0D 01593E6B
quit
↓
crypto isakmp policy 10
  hash md5
crypto isakmp identity hostname
↓
↓
crypto ipsec transform-set myset esp-des esp-md5-hmac
↓
↓
.
crypto map vpn 10 ipsec-isakmp
  set peer 172.16.172.34
  set transform-set myset
  match address 130
↓
↓
↓
↓
↓
↓
```

```
interface Loopback0
 ip address 10.10.10.1 255.255.255.0
!
interface Loopback1
 ip address 121.1.1.1 255.255.255.0
!
interface Loopback88
 ip address 88.88.88.88 255.255.255.255
!
interface FastEthernet0
 ip address 172.16.172.39 255.255.255.240
 ip nat outside
 speed auto
 crypto map vpn
!
interface Serial0
 ip nat inside
 ip address 1.1.1.1 255.255.255.252
!
 ip nat inside source route-map nonat interface
 FastEthernet0 overload
 ip classless
 ip route 0.0.0.0 0.0.0.0 172.16.172.33
 no ip http server
 ip pim bidir-enable
!
 access-list 120 deny ip 1.1.1.0 0.0.0.255 192.168.4.0
 0.0.0.255
 access-list 120 permit ip 1.1.1.0 0.0.0.255 any
 access-list 130 permit ip 1.1.1.0 0.0.0.255 192.168.4.0
 0.0.0.255
 route-map nonat permit 10
 match ip address 120
!
 line con 0
 line aux 0
 line vty 0 4
 exec-timeout 0 0
 password cisco
 no login
 line vty 5 15
 login
!
 no scheduler allocate
end
```

PIX 示例配置

```
pix520-1# write terminal
Building configuration...
: Saved
:
PIX Version 6.0(1)
nameif ethernet0 outside security0
nameif ethernet1 inside security100
enable password 2KF0nbNIdI.2KY0U encrypted
passwd 2KF0nbNIdI.2KY0U encrypted
hostname pix520-1
domain-name vpn.com
fixup protocol ftp 21
fixup protocol http 80
fixup protocol h323 1720
fixup protocol rsh 514
fixup protocol smtp 25
fixup protocol sqlnet 1521
```


fixup protocol sip 5060
fixup protocol skinny 2000
names
access-list 130 permit ip 192.168.4.0 255.255.255.0
1.1.1.0 255.255.255.0
access-list 140 permit ip 192.168.4.0 255.255.255.0
1.1.1.0 255.255.255.0
no pager
logging on
logging monitor debugging
logging buffered debugging
logging trap debugging
logging history debugging
logging host outside 192.168.2.6
interface ethernet0 auto
interface ethernet1 auto
mtu outside 1500
mtu inside 1500
ip address outside 172.16.172.34 255.255.255.240
ip address inside 192.168.4.50 255.255.255.0
ip audit info action alarm
ip audit attack action alarm
no failover
failover timeout 0:00:00
failover poll 15
failover ip address outside 0.0.0.0
failover ip address inside 0.0.0.0
pdm history enable
arp timeout 14400
global (outside) 1 172.16.172.57 netmask 255.255.255.255
nat (inside) 0 access-list 140
nat (inside) 1 0.0.0.0 0.0.0.0 0 0
route outside 0.0.0.0 0.0.0.0 172.16.172.33 1
timeout xlate 3:00:00
timeout conn 1:00:00 half-closed 0:10:00 udp 0:02:00 rpc
0:10:00
h323 0:05:00 sip 0:30:00 sip media 0:02:00
timeout uauth 0:05:00 absolute
aaa-server TACACS+ protocol tacacs+
aaa-server RADIUS protocol radius
aaa-server mytest protocol tacacs+
aaa-server nasir protocol radius
snmp-server host outside 192.168.2.6
no snmp-server location
no snmp-server contact
snmp-server community public
snmp-server enable traps
floodguard enable
sysopt connection permit-ipsec
no sysopt route dnat
crypto ipsec transform-set myset esp-des esp-md5-hmac
crypto map mymap 5 ipsec-isakmp
crypto map mymap 5 match address 130
crypto map mymap 5 set peer 172.16.172.39
crypto map mymap 5 set transform-set myset
crypto map mymap interface outside
isakmp enable outside
isakmp policy 10 authentication rsa-sig
isakmp policy 10 encryption des
isakmp policy 10 hash md5
isakmp policy 10 group 1
isakmp policy 10 lifetime 86400
ca identity cisco 171.69.89.16:/cqi-bin 171.69.89.16
ca configure cisco ra 20 5

```
telnet 192.168.4.0 255.255.255.0 inside
telnet 171.69.89.82 255.255.255.255 inside
telnet 192.168.4.3 255.255.255.255 inside
telnet timeout 5
ssh 172.0.0.0 255.0.0.0 outside
ssh 171.0.0.0 255.255.255.0 outside
ssh 171.0.0.0 255.0.0.0 outside
ssh 171.0.0.0 255.0.0.0 inside
ssh timeout 60
terminal width 80
Cryptochecksum:c2d5976fc87875678356cf83b135bb8c
: end
[OK]
pix520-1#
```

获得证书

在路由器上获得证书

此部分描述如何获取路由器上的数字证书。

1. 配置路由器的主机名和 IP 域名 (如果此操作尚未完成) 。pix520-1# **write terminal**

```
Building configuration...
: Saved
:
PIX Version 6.0(1)
nameif ethernet0 outside security0
nameif ethernet1 inside security100
enable password 2KFQnbNIdI.2KYOU encrypted
passwd 2KFQnbNIdI.2KYOU encrypted
hostname pix520-1
domain-name vpn.com
fixup protocol ftp 21
fixup protocol http 80
fixup protocol h323 1720
fixup protocol rsh 514
fixup protocol smtp 25
fixup protocol sqlnet 1521
fixup protocol sip 5060
fixup protocol skinny 2000
names
access-list 130 permit ip 192.168.4.0 255.255.255.0 1.1.1.0 255.255.255.0
access-list 140 permit ip 192.168.4.0 255.255.255.0 1.1.1.0 255.255.255.0
no pager
logging on
logging monitor debugging
logging buffered debugging
logging trap debugging
logging history debugging
logging host outside 192.168.2.6
interface ethernet0 auto
interface ethernet1 auto
mtu outside 1500
mtu inside 1500
ip address outside 172.16.172.34 255.255.255.240
ip address inside 192.168.4.50 255.255.255.0
ip audit info action alarm
ip audit attack action alarm
no failover
failover timeout 0:00:00
```

```

failover poll 15
failover ip address outside 0.0.0.0
failover ip address inside 0.0.0.0
pdm history enable
arp timeout 14400
global (outside) 1 172.16.172.57 netmask 255.255.255.255
nat (inside) 0 access-list 140
nat (inside) 1 0.0.0.0 0.0.0.0 0 0
route outside 0.0.0.0 0.0.0.0 172.16.172.33 1
timeout xlate 3:00:00
timeout conn 1:00:00 half-closed 0:10:00 udp 0:02:00 rpc 0:10:00
h323 0:05:00 sip 0:30:00 sip_media 0:02:00
timeout uauth 0:05:00 absolute
aaa-server TACACS+ protocol tacacs+
aaa-server RADIUS protocol radius
aaa-server mytest protocol tacacs+
aaa-server nasir protocol radius
snmp-server host outside 192.168.2.6
no snmp-server location
no snmp-server contact
snmp-server community public
snmp-server enable traps
floodguard enable
sysopt connection permit-ipsec
no sysopt route dnat
crypto ipsec transform-set myset esp-des esp-md5-hmac
crypto map mymap 5 ipsec-isakmp
crypto map mymap 5 match address 130
crypto map mymap 5 set peer 172.16.172.39
crypto map mymap 5 set transform-set myset
crypto map mymap interface outside
isakmp enable outside
isakmp policy 10 authentication rsa-sig
isakmp policy 10 encryption des
isakmp policy 10 hash md5
isakmp policy 10 group 1
isakmp policy 10 lifetime 86400
ca identity cisco 171.69.89.16:/cgi-bin 171.69.89.16
ca configure cisco ra 20 5
telnet 192.168.4.0 255.255.255.0 inside
telnet 171.69.89.82 255.255.255.255 inside
telnet 192.168.4.3 255.255.255.255 inside
telnet timeout 5
ssh 172.0.0.0 255.0.0.0 outside
ssh 171.0.0.0 255.255.255.0 outside
ssh 171.0.0.0 255.0.0.0 outside
ssh 171.0.0.0 255.0.0.0 inside
ssh timeout 60
terminal width 80
Cryptochecksum:c2d5976fc87875678356cf83b135bb8c
: end
[OK]

```

pix520-1# **注意：**必须提供主机名和域名，因为路由器将根据分配到路由器上的主机名和IP域名，把完全合格的域名(FQDN)分配给IPSec使用的密钥和证书。"例如，根据路由器主机名"router"和路由器IP域名router.cisco.com认证命名为""router.cisco.com""的证书。"

2. 为路由器生成RSA密钥对，该密钥对可以用来签署和加密IKE密钥管理消息。要获取路由器的证书，需要生成密钥对。1720-1(config)#crypto key generate rsa

```

The name for the keys will be: 1720-1.cisco.com
Choose the size of the key modulus in the range of 360 to 2048 for your
General Purpose Keys. Choosing a key modulus greater than 512 may take a few minutes.

```

How many bits in the modulus [512]:

Generating RSA keys ...
[OK]

```
1720-1(config)#使用 show crypto key mypubkey rsa 命令查看路由器的 RSA 密钥对。1720-1#sh cr key mypubkey rsa
% Key pair was generated at: 19:26:22 PST Jan 10 2002
Key name: 1720-1.cisco.com
Usage: General Purpose Key
Key Data:
 305C300D 06092A86 4886F70D 01010105 00034B00 30480241 00A085B4 756F8CE
 B91F2E52 E2A23F84 7EC95F44 F65AF2EB C1F81608 1CC61FAB 077482F1 FAD12424
 44B9F66B 9EC48E1B 1EB5B9D0 E802BAB9 A57048EB B8CD1877 3F020301 0001
```

```
% Key pair was generated at: 19:26:24 PST Jan 10 2002
Key name: 1720-1.cisco.com.server
Usage: Encryption Key
Key Data:
 307C300D 06092A86 4886F70D 01010105 00036B00 30680261 00C653F7 2AE7E397
 0041E273 BFCC0E35 E7AF9874 A73B77E8 B15EF54A CA2417AD AB75BAD9 BA1540F4
 3DB849BD B70DF4D8 EBBE7ED AB93BE4B 5C1E9E6A 560A9C8A 12D7CBE3 060DBE7E
 8C1667AE 93993049 DA362602 4E4D9EF8 2F8C4777 30F9F958 7F020301 0001
```

1720-1#

3. 声明 Certificate Authority (CA) 服务器以配置路由器和 CA 之间的通信参数。如果要使用注册机构，则同时指定注册机构 (RA) 模式。如果您希望路由器接收其他对等体认证，那么即使路由器不能访问正确的证书废止列表(CRL)，也请使用crl可选命令。1720-1(config)# crypto ca identity vpn

```
1720-1(ca-identity)#enrollment url http://171.69.89.16:80
1720-1(ca-identity)# query url ldap://171.69.89.16
1720-1(ca-identity)# enrollment retry count 20
1720-1(ca-identity)# enrollment retry period 5
1720-1(ca-identity)# enrollment mode ra
1720-1(ca-identity)#exit
```

4. 路由器需要获得包括CA公共密钥的CA自签名证书，以签权CA。由于CA签署自己的证书，应该通过与CA管理员取得联系的方式，手工验证CA公共密钥，以比较CA证书指纹。本例中，我们在接收CA认证后，通过比较二个指纹对公共密钥进行手工验证，而不需输入带有命令语句的公共密钥。1720-1(config)#cr ca authenticate vpn

```
Certificate has the following attributes:
Fingerprint: 1FCDF2C8 2DEDA6AC 4819D4C4 B4CFF2F5
% Do you accept this certificate? [yes/no]: y
```

```
1720-1(config)#使用sh crypto ca cert命令，以查看CA和RA证书，并确认认证成功。1720-1#sh cr ca cert
```

```
RA Signature Certificate
  Status: Available
```

```
!--- The authentication was successful. Certificate Serial Number: 3B2FD319 Key Usage:
Signature Issuer: OU = sjvpn O = cisco C = us Subject: CN = First Officer OU = sjvpn O =
cisco C = us CRL Distribution Point: CN = CRL1, OU = sjvpn, O = cisco, C = us Validity
Date: start date: 14:03:31 PST Jun 19 2001 end date: 14:33:31 PST Jun 19 2004 Associated
Identity: vpn RA KeyEncipher Certificate Status: Available
```

```
!--- The authentication was successful. Certificate Serial Number: 3B2FD318 Key Usage:
Encryption Issuer: OU = sjvpn O = cisco C = us Subject: CN = First Officer OU = sjvpn O =
cisco C = us CRL Distribution Point: CN = CRL1, OU = sjvpn, O = cisco, C = us Validity
Date: start date: 14:03:31 PST Jun 19 2001 end date: 14:33:31 PST Jun 19 2004 Associated
Identity: vpn CA Certificate Status: Available
```

```
!--- The authentication was successful. Certificate Serial Number: 3B2FD307 Key Usage:
General Purpose Issuer: OU = sjvpn O = cisco C = us Subject: OU = sjvpn O = cisco C = us
CRL Distribution Point: CN = CRL1, OU = sjvpn, O = cisco, C = us Validity Date: start date:
14:02:40 PST Jun 19 2001 end date: 14:32:40 PST Jun 19 2021 Associated Identity: vpn
```

5. 从 CA 为路由器的每个 RSA 密钥对获取签名证书。如果您生成了通用RSA密钥，路由器则拥有一个RSA密钥对，并且只需要一个证书。如果您生成了特殊的使用RSA密钥，路由器有二个

RSA密钥对，需要两个证书。如果在CA服务器上配置了它，您必须与CA管理员联系，人工授予路由器证书。并且，如果配置了CA服务器，那么您必须在登记之时提供密码，然后联系CAs管理员获得此密码。在本例中，CA服务器已经设置，因此在登记时我们不需要提供密码

```
o 1720-1(config)#cr ca enroll vpn
%
% Start certificate enrollment ..
% Create a challenge password. You will need to verbally provide this
  password to the CA Administrator in order to revoke your certificate.
  For security reasons your password will not be saved in the configuration.
  Please make a note of it.
```

Password:

Re-enter password:

```
% The subject name in the certificate will be: 1720-1.cisco.com
% Include the router serial number in the subject name? [yes/no]: n
% Include an IP address in the subject name? [yes/no]: n
Request certificate from CA? [yes/no]: y
% Certificate request sent to Certificate Authority
% The certificate request fingerprint will be displayed.
% The 'show crypto ca certificate' command will also show the fingerprint.
```

```
1720-1(config)#      Fingerprint:  A1D6C28B 6575AD08 F0B656D4 7161F76F
```

3d09h: CRYPTO_PKI: status = 102: *certificate request pending* 在我们执行登记命令后，路由器与CA服务器通信，并尝试获得其证书。在这个时间内，如果配置CA服务器来请求证书的手工认证，那么您需要联系CA管理员。使用sh crypto ca cert命令查看路由器证书，并验证登记成功。在以下示例中，证书尚未审批。1720-1#sh crypto ca cert

```
RA Signature Certificate
  Status: Available
  Certificate Serial Number: 3B2FD319
  Key Usage: Signature
  Issuer:
    OU = sjvpn
    O = cisco
    C = us
  Subject:
    CN = First Officer
    OU = sjvpn
    O = cisco
    C = us
  CRL Distribution Point:
    CN = CRL1, OU = sjvpn, O = cisco, C = us
  Validity Date:
    start date: 14:03:31 PST Jun 19 2001
    end   date: 14:33:31 PST Jun 19 2004
  Associated Identity: vpn
```

```
RA KeyEncipher Certificate
  Status: Available
  Certificate Serial Number: 3B2FD318
  Key Usage: Encryption
  Issuer:
    OU = sjvpn
    O = cisco
    C = us
  Subject:
    CN = First Officer
    OU = sjvpn
    O = cisco
    C = us
```

```
CRL Distribution Point:
  CN = CRL1, OU = sjvpn, O = cisco, C = us
Validity Date:
  start date: 14:03:31 PST Jun 19 2001
  end   date: 14:33:31 PST Jun 19 2004
Associated Identity: vpn
```

CA Certificate

```
Status: Available
Certificate Serial Number: 3B2FD307
Key Usage: General Purpose
Issuer:
  OU = sjvpn
  O = cisco
  C = us
Subject:
  OU = sjvpn
  O = cisco
  C = us
CRL Distribution Point:
  CN = CRL1, OU = sjvpn, O = cisco, C = us
Validity Date:
  start date: 14:02:40 PST Jun 19 2001
  end   date: 14:32:40 PST Jun 19 2021
Associated Identity: vpn
```

Certificate

```
Subject Name Contains:
  Name: 1720-1.cisco.com
Status: Pending
!--- The certificate is still pending. Key Usage: General Purpose Fingerprint: A1D6C28B
6575AD08 F0B656D4 7161F76F Associated Identity: vpn 以下示例输出显示已从 CA 收到证书。
3d09h: %CRYPTO-6-CERTRET: Certificate received from Certificate Authority 1720-1#sh crypto
ca cert
```

Certificate

```
Status: Available
!--- This status indicates that the certificates were successfully received. Certificate
Serial Number: 3B2FD652 Key Usage: General Purpose Issuer: OU = sjvpn O = cisco C = us
Subject Name Contains: Name: 1720-1.cisco.com CRL Distribution Point: CN = CRL1, OU =
sjvpn, O = cisco, C = us Validity Date: start date: 19:06:14 PST Jan 10 2002 end date:
19:36:14 PST Jan 10 2003 Associated Identity: vpn RA Signature Certificate Status:
Available Certificate Serial Number: 3B2FD319 Key Usage: Signature Issuer: OU = sjvpn O =
cisco C = us Subject: CN = First Officer OU = sjvpn O = cisco C = us CRL Distribution
Point: CN = CRL1, OU = sjvpn, O = cisco, C = us Validity Date: start date: 14:03:31 PST Jun
19 2001 end date: 14:33:31 PST Jun 19 2004 Associated Identity: vpn RA KeyEncipher
Certificate Status: Available Certificate Serial Number: 3B2FD318 Key Usage: Encryption
Issuer: OU = sjvpn O = cisco C = us Subject: CN = First Officer OU = sjvpn O = cisco C = us
CRL Distribution Point: CN = CRL1, OU = sjvpn, O = cisco, C = us Validity Date: start date:
14:03:31 PST Jun 19 2001 end date: 14:33:31 PST Jun 19 2004 Associated Identity: vpn CA
Certificate Status: Available Certificate Serial Number: 3B2FD307 Key Usage: General
Purpose Issuer: OU = sjvpn O = cisco C = us CRL Distribution Point: CN = CRL1, OU = sjvpn,
O = cisco, C = us Validity Date: start date: 14:02:40 PST Jun 19 2001 end date: 14:32:40
PST Jun 19 2021 Associated Identity: vpn
```

6. 可以手动向 CA 请求 CRL。要在路由器上更新 CRL，请使用以下命令：1720-1(config)#crypto ca crl request vpn
1720-1(config)#exit

使用 show crypto ca crls 命令查看 CRL。1720-1#sh crypto ca crls

```
CRL Issuer Name:
  OU = sjvpn, O = cisco, C = us
LastUpdate: 16:17:34 PST Jan 10 2002
NextUpdate: 17:17:34 PST Jan 11 2002
Retrieved from CRL Distribution Point:
```

```
LDAP: CN = CRL1, OU = sjvpn, O = cisco, C = us
```

```
1720-1#
```

7. 发出 **write mem** 命令以保存配置。1720-1# **wr m**
Building configuration?
[OK]
1720-1#

在 PIX 上获得证书

如果要获得PIX防火墙证书，您需要按照路由器上的相同步骤执行。不过，PIX 命令语法有所不同。

1. 设置主机名和 IP 域名。

```
hostname pix520-1  
domain-name vpn.com
```

2. 生成 RSA 密钥对。pix520-1(config)# **ca generate rsa key 512**

使用 **show ca mypubkey rsa** 命令显示 RSA 密钥对。pix520-1(config)# **sh ca mypubkey rsa**

```
% Key pair was generated at: 04:54:34 Jan 11 2002
```

```
Key name: pix520-1.vpn.com  
Usage: General Purpose Key  
Key Data:
```

```
305c300d 06092a86 4886f70d 01010105 00034b00 30480241 009d95d5 e1147546  
1f9ef873 81a36256 4b81388b 188fbc66 40fc4c56 c1801311 ff450cca e8d715c3  
ffb8fa28 d347120f ae8a9972 3a88321c a71c1c7f ef29b810 2f020301 0001
```

```
pix520-1(config)#
```

3. 声明 CA 服务器。pix520-1(config)# **ca identity cisco 171.69.89.16 171.69.89.16**

```
pix520-1(config)# ca configure cisco ra 20 5
```

4. 验证 CA。pix520-1(config)# **ca authenticate cisco**

```
Certificate has the following attributes:
```

```
Fingerprint: 1fcd2c8 2deda6ac 4819d4c4 b4cff2f5
```

```
pix520-1(config)# 使用 show ca cert 命令查看 PIX 上的 CA 证书。pix520-1(config)# sh ca cert
```

```
CA Certificate
```

```
Status: Available !--- The authentication was successful. Certificate Serial Number:  
3b2fd307 Key Usage: General Purpose OU = sjvpn O = cisco C = us CRL Distribution Point: CN  
= CRL1, OU = sjvpn, O = cisco, C = us Validity Date: start date: 22:02:40 Jun 19 2001 end  
date: 22:32:40 Jun 19 2021 RA Signature Certificate Status: Available !--- The  
authentication was successful. Certificate Serial Number: 3b2fd319 Key Usage: Signature CN  
= First Officer OU = sjvpn O = cisco C = us CRL Distribution Point: CN = CRL1, OU = sjvpn,  
O = cisco, C = us Validity Date: start date: 22:03:31 Jun 19 2001 end date: 22:33:31 Jun 19  
2004 RA KeyEncipher Certificate Status: Available !--- The authentication was successful.  
Certificate Serial Number: 3b2fd318 Key Usage: Encryption CN = First Officer OU = sjvpn O =  
cisco C = us CRL Distribution Point: CN = CRL1, OU = sjvpn, O = cisco, C = us Validity  
Date: start date: 22:03:31 Jun 19 2001 end date: 22:33:31 Jun 19 2004
```

5. 向 CA 请求 CRL。pix520-1(config)# **ca enroll cisco 171.69.89.16**

```
%
```

```
% Start certificate enrollment ..
```

```
% The subject name in the certificate will be: pix520-1.vpn.com
```

```
% Certificate request sent to Certificate Authority
```

```
% The certificate request fingerprint will be displayed.
```

```
pix520-1(config)# Fingerprint: 6961df68 d3b5e667 8903a66b 969eee64
```

```

CRYPTO_PKI: status = 102: certificate request pending
CRYPTO_PKI: status = 102: certificate request pending 证书已由 CA 授予! pix520-1(config)#
pix520-1(config)# show ca cert
Certificate
  Status: Available
  !--- The enrollment was successful. Certificate Serial Number: 3b2fd653 Key Usage: General
  Purpose Subject Name Name: pix520-1.vpn.com CRL Distribution Point: CN = CRL1, OU = sjvnp,
  O = cisco, C = us Validity Date: start date: 04:13:45 Jan 11 2002 end date: 04:43:45 Jan 11
  2003 RA Signature Certificate Status: Available !--- The enrollment was successful.
  Certificate Serial Number: 3b2fd319 Key Usage: Signature CN = First Officer OU = sjvnp O =
  cisco C = us CRL Distribution Point: CN = CRL1, OU = sjvnp, O = cisco, C = us Validity
  Date: start date: 22:03:31 Jun 19 2001 end date: 22:33:31 Jun 19 2004 CA Certificate
  Status: Available !--- The enrollment was successful. Certificate Serial Number: 3b2fd307
  Key Usage: General Purpose OU = sjvnp O = cisco C = us CRL Distribution Point: CN = CRL1,
  OU = sjvnp, O = cisco, C = us Validity Date: start date: 22:02:40 Jun 19 2001 end date:
  22:32:40 Jun 19 2021 RA KeyEncipher Certificate Status: Available !--- The enrollment was
  successful. Certificate Serial Number: 3b2fd318 Key Usage: Encryption CN = First Officer OU
  = sjvnp O = cisco C = us CRL Distribution Point: CN = CRL1, OU = sjvnp, O = cisco, C = us
  Validity Date: start date: 22:03:31 Jun 19 2001 end date: 22:33:31 Jun 19 2004 pix520-
  1(config)# pix520-1(config)# ca crl request cisco

```

6. 使用 `sh ca crl` 命令查看 CRL。pix520-1(config)# `sh ca crl`

```

CRL:
  CRL Issuer Name:
    OU = sjvnp, O = cisco, C = us
  LastUpdate: 00:17:34 Jan 11 2002

  NextUpdate: 01:17:34 Jan 12 2002

```

```
pix520-1(config)#
```

7. 要在 PIX 上保存证书，请使用以下命令：pix520-1(config)# `ca save all`

```
pix520-1(config)#
```

验证

本部分所提供的信息可用于确认您的配置是否正常工作。

[命令输出解释程序工具](#) ([仅限注册用户](#)) 支持某些 `show` 命令，使用此工具可以查看对 `show` 命令输出的分析。

可以在 PIX 和路由器上运行 `Show` 命令。

- `show crypto isakmp sa` - 查看对等体上的所有当前 IKE 安全连接 (SA)。
- `show crypto ipsec sa` - 显示当前 IPSec 安全连接所使用的设置。
- `show crypto engine connections active`- (仅路由器) 显示有关加密和解密数据包的当前连接和信息。
- `show crypto ca crls` - (仅路由器) 显示路由器上的当前 CRL。
- `show crypto ca certificates` - (仅路由器) 显示路由器上的路由器、CA 服务器和 RA 证书。它还显示证书分发点 (CDP)。
- `show ca certificates` - (仅 PIX) 显示 PIX、CA 和 RA 证书。与路由器不同，它不显示 CDP。
- `show ca crl` - (仅 PIX) 显示 PIX 上的 CRL。
- `show clock` - 显示路由器/PIX 上的当前时间 (从启用模式)。

路由器 `show` 命令输出示例


```
1720-1#sh cr isa sa
dst          src          state          conn-id    slot
172.16.172.39 172.16.172.34 QM_IDLE       110        0
```

```
1720-1#sh cr map
```

```
Interfaces using crypto map mymap:
```

```
Crypto Map "vpn" 10 ipsec-isakmp
Peer = 172.16.172.34
Extended IP access list 130
    access-list 130 permit ip 1.1.1.0 0.0.0.255 192.168.4.0 0.0.0.255
Current peer: 172.16.172.34
Security association lifetime: 4608000 kilobytes/3600 seconds
PFS (Y/N): N
Transform sets={ myset, }
Interfaces using crypto map vpn:
    FastEthernet0
Interfaces using crypto map certificate:
```

```
1720-1#sh cr isa policy
```

```
Protection suite of priority 10
    encryption algorithm: DES - Data Encryption Standard
(56 bit keys).
    hash algorithm: Message Digest 5
    authentication method: Rivest-Shamir-Adleman Signature
    Diffie-Hellman group: #1 (768 bit)
    lifetime: 86400 seconds, no volume limit
Default protection suite
    encryption algorithm: DES - Data Encryption Standard
(56 bit keys).
    hash algorithm: Secure Hash Standard
    authentication method: Rivest-Shamir-Adleman Signature
    Diffie-Hellman group: #1 (768 bit)
    lifetime: 86400 seconds, no volume limit
```

```
1720-1#
```

```
1720-1#sh cr ipsec sa
```

```
interface: FastEthernet0
```

```
    Crypto map tag: vpn, local addr. 172.16.172.39
```

```
local ident (addr/mask/prot/port):
```

```
(1.1.1.0/255.255.255.0/0/0)
```

```
remote ident (addr/mask/prot/port):
```

```
(192.168.4.0/255.255.255.0/0/0)
```

```
current_peer: 172.16.172.34
```

```
    PERMIT, flags={origin_is_acl,}
```

```
    #pkts encaps: 3, #pkts encrypt: 3, #pkts digest 3
```

```
    #pkts decaps: 3, #pkts decrypt: 3, #pkts verify 3
```

```
    #pkts compressed: 0, #pkts decompressed: 0
```

```
    #pkts not compressed: 0, #pkts compr. failed: 0,
```

```
#pkts decompress failed: 0
```

```
    #send errors 0, #recv errors 0
```

```
local crypto endpt.: 172.16.172.39,
```

```
remote crypto endpt.: 172.16.172.34
```

```
path mtu 1500, media mtu 1500
```

```
current outbound spi: 3803A0C1
```

```
inbound esp sas:
```

```
spi: 0xD740971C(3611334428)
```

```
transform: esp-des esp-md5-hmac ,
```

```
in use settings = {Tunnel, }
```

```
slot: 0, conn id: 200, flow_id: 1,
```

```
crypto map: vpn
```

```
sa timing: remaining key lifetime
(k/sec): (4607999/3150)
IV size: 8 bytes
replay detection support: Y
```

inbound ah sas:

inbound pcp sas:

outbound esp sas:

```
spi: 0x3803A0C1(939761857)
transform: esp-des esp-md5-hmac ,
in use settings ={Tunnel, }
slot: 0, conn id: 201, flow_id: 2,
crypto map: vpn
sa timing: remaining key lifetime
(k/sec): (4607999/3141)
IV size: 8 bytes
replay detection support: Y
```

outbound ah sas:

outbound pcp sas:

1720-1#

1720-1# **sh cr en conn ac**

ID	Interface	IP-Address	State	Algorithm	Encrypt	Decrypt
110	FastEthernet0	172.16.172.39	set	HMAC_MD5+DES_56_CB	0	0
114	FastEthernet0	172.16.172.39	alloc	NONE	0	0
115	FastEthernet0	172.16.172.39	alloc	NONE	0	0
116	FastEthernet0	172.16.172.39	alloc	NONE	0	0
117	FastEthernet0	172.16.172.39	alloc	NONE	0	0
200	FastEthernet0	172.16.172.39	set	HMAC_MD5+DES_56_CB	0	3
201	FastEthernet0	172.16.172.39	set	HMAC_MD5+DES_56_CB	3	0

1720-1#**sh clock**

01:06:41.786 PST Fri Jan 11 2002

[PIX show 命令输出示例](#)

pix520-1# **sh cr isa sa**

```
Total      : 1
Embryonic  : 0
```

dst	src	state	pending	created
172.16.172.39	172.16.172.34	QM_IDLE	0	1

pix520-1#

pix520-1# **sh cr map**

Crypto Map: "mymap" interfaces: { outside }

Crypto Map "mymap" 5 ipsec-isakmp

Peer = 172.16.172.39

access-list 130 permit ip

192.168.4.0 255.255.255.0 1.1.1.0 255.255.255.0 (hitcnt=91)

Current peer: 172.16.172.39

Security association lifetime:

4608000 kilobytes/28800 seconds

PFS (Y/N): N

Transform sets={ myset, }

```
pix520-1# sh cr isa policy
Protection suite of priority 10
    encryption algorithm:  DES - Data Encryption Standard (
56 bit keys).
    hash algorithm:        Message Digest 5
    authentication method: Rivest-Shamir-Adleman Signature
    Diffie-Hellman group:  #1 (768 bit)
    lifetime:              86400 seconds, no volume limit
Default protection suite
    encryption algorithm:  DES - Data Encryption Standard
(56 bit keys).
    hash algorithm:        Secure Hash Standard
    authentication method: Rivest-Shamir-Adleman Signature
    Diffie-Hellman group:  #1 (768 bit)
    lifetime:              86400 seconds,
no volume limit
pix520-1#
pix520-1# sh cr ipsec sa
```

```
interface: outside
    Crypto map tag: mymap, local addr. 172.16.172.34

local ident (addr/mask/prot/port):
(192.168.4.0/255.255.255.0/0/0)
remote ident (addr/mask/prot/port):
(1.1.1.0/255.255.255.0/0/0)
current_peer: 172.16.172.39
    PERMIT, flags={origin_is_acl,}
    #pkts encaps: 3, #pkts encrypt: 3, #pkts digest 3
    #pkts decaps: 3, #pkts decrypt: 3, #pkts verify 3
    #pkts compressed: 0, #pkts decompressed: 0
    #pkts not compressed: 0, #pkts compr. failed: 0,
#pkts decompress failed: 0
    #send errors 2, #recv errors 0

local crypto endpt.: 172.16.172.34, remote
crypto endpt.: 172.16.172.39
path mtu 1500, ipsec overhead 56, media mtu 1500
current outbound spi: d740971c

inbound esp sas:
    spi: 0x3803a0c1(939761857)
    transform: esp-des esp-md5-hmac ,
    in use settings ={Tunnel, }
    slot: 0, conn id: 4, crypto map: mymap
    sa timing: remaining key lifetime
(k/sec): (4607999/2971)
    IV size: 8 bytes
    replay detection support: Y

inbound ah sas:

inbound pcp sas:

outbound esp sas:
    spi: 0xd740971c(3611334428)
    transform: esp-des esp-md5-hmac ,
    in use settings ={Tunnel, }
    slot: 0, conn id: 3, crypto map: mymap
    sa timing: remaining key lifetime
```

```
(k/sec): (4607999/2971)
  IV size: 8 bytes
  replay detection support: Y
```

```
outbound ah sas:
```

```
outbound pcp sas:
```

```
pix520-1# pix520-1# sh cr en
Crypto Engine Connection Map:
  size = 8, free = 6, used = 2, active = 2
pix520-1#
```

```
pix520-1# sh clock
09:27:54 Jan 11 2002
pix520-1#
```

故障排除

本部分提供的信息可用于对配置进行故障排除。

故障排除命令

[命令输出解释程序工具](#) ([仅限注册用户](#)) 支持某些 **show** 命令，使用此工具可以查看对 **show** 命令输出的分析。

注意： 在发出 **debug** 命令之前，请参阅[有关 Debug 命令的重要信息](#)。

必须在两个 IPsec 对等体上运行以下调试：

- **debug crypto isakmp** - (路由器和 PIX) 显示第 1 阶段的错误。
- **debug crypto ipsec** - (路由器和 PIX) 显示第 2 阶段的错误。
- **debug crypto engine** - (仅路由器) 显示来自加密引擎的信息。
- **debug crypto pki transactions** - (仅路由器) 显示与路由器 Public Key Infrastructure (PKI) 事务相关的信息。
- **debug crypto pki messages** - (仅路由器) 显示与 PKI 输入/输出消息相关的信息。
- **debug crypto ca** - (仅 PIX) 显示与 PKI 事务和输入/输出消息相关的信息。

必须在两个对等体上清除安全关联。在启用模式下执行 PIX 命令；在非启用模式下执行路由器命令。

- **clear crypto isakmp sa** - (PIX) 清除第 1 阶段安全关联。
- **clear crypto ipsec sa** - (PIX) 清除第 2 阶段安全关联。
- **clear crypto isakmp** - (路由器) 清除第 1 阶段安全关联。
- **clear crypto sa** - (路由器) 清除第 2 阶段安全关联。

路由器上的证书调试示例

这区分显示我们运行以下 PKI debug 命令时的路由器调试，同时还保持来自 CA 服务器的证书。已在成功完成的会话期间获取这些调试。

```
1720-1#debug cr pki transactions
```

Crypto PKI Trans debugging is on
1720-1#**debug cr pki messages**
Crypto PKI Msg debugging is on

1720-1(config)#**cr ca authenticate vpn**
Certificate has the following attributes:
Fingerprint: 1FCDF2C8 2DEDA6AC 4819D4C4 B4CFF2F5
% Do you accept this certificate? [yes/no]:
08:48:10: CRYPTO_PKI: Sending CA Certificate Request:
GET /cgi-bin/pkiclient.exe?operation=GetCACert&message =vpn HTTP/1.0

08:48:10: CRYPTO_PKI: can not resolve server name/IP address
08:48:10: CRYPTO_PKI: Using unresolved IP Address 171.69.89.16
08:48:10: CRYPTO_PKI: http connection opened
08:48:11: CRYPTO_PKI: HTTP response header:
HTTP/1.1 200 OK
Date: Fri, 11 Jan 2002 19:10:53 Pacific Standard Time
Server: Entrust/VPNConnector v5.0
Connection: close
Content-Type: application/x-x509-ra-ca-certs

Content-Type indicates we have received CA and RA certificates.

08:48:11: CRYPTO_PKI:CA and RA certs:
08:48:11: 30 82 08 EA 06 09 2A 86 48 86 F7 0D 01 07 02 A0
08:48:11: 82 08 DB 30 82 08 D7 02 01 01 31 00 30 0B 06 09
08:48:11: 2A 86 48 86 F7 0D 01 07 01 A0 82 08 BF 30 82 02
!--- Hex data omitted. 08:48:11: 14 06 03 55 04 03 13 0D 46 69 72 73 74 20 4F 66 08:48:11: 66
69 63 65 72 30 81 9F 30 0D 06 09 2A 86 48 86 08:48:11: 80 01 8F 51 3A 4B 61 74 59 0B 85 AA 9C E3
B3 91 08:48:11: 62 94 06 AA 7C E9 CC 0D 01 59 3E 6B 31 00 08:48:11: 08:48:11: CRYPTO_PKI: Error:
Certificate, private key or CRL was not found while selecting certificate chain 08:48:11:
CRYPTO_PKI: WARNING: A certificate chain could not be constructed while selecting certificate
status 08:48:11: CRYPTO_PKI: Error: Certificate, private key or CRL was not found while
selecting certificate chain 08:48:11: CRYPTO_PKI: WARNING: A certificate chain could not be
constructed while selecting certificate status 08:48:11: CRYPTO_PKI: crypto_process_ra_certs()
For:vpn 08:48:11: CRYPTO_PKI: crypto_set_ra_pubkey() (using global_auth_context) 08:48:11:
CRYPTO_PKI: crypto_set_ra_pubkey() (using global_auth_context) 08:48:11: CRYPTO_PKI: transaction
GetCACert completed 08:48:11: CRYPTO_PKI: CA certificate received. 08:48:11: CRYPTO_PKI: CA
certificate received. % Please answer 'yes' or 'no'. % Do you accept this certificate? [yes/no]:
y

1720-1(config)#
08:49:08: CRYPTO_PKI: crypto_process_ra_certs() For:vpn

1720-1(config)#**cr ca enroll vpn**
%
% Start certificate enrollment ..
% Create a challenge password. You will need to verbally
provide this password to the CA Administrator in order
to revoke your certificate. For security reasons your
password will not be saved in the configuration.
Please make a note of it.

Password:
Re-enter password:

% The subject name in the certificate will be: 1720-1.cisco.com
% Include the router serial number in the subject name? [yes/no]: **n**
% Include an IP address in the subject name? [yes/no]: **n**
Request certificate from CA? [yes/no]: **y**
% Certificate request sent to Certificate Authority
% The certificate request fingerprint will be displayed.

% The 'show crypto ca certificate' command will also show
% the fingerprint.

1720-1(config)# Fingerprint: CB9730B0 5EAAEBCB CC04C77B 2B7F253D

```
08:51:09: CRYPTO_PKI: transaction PKCSReq completed
08:51:09: CRYPTO_PKI: status:
08:51:10: CRYPTO_PKI:Write out pkcs#10 content:272
08:51:10:      30 82 01 0C 30 81 B7 02 01 00 30 21 31 1F 30 1D
08:51:10:      06 09 2A 86 48 86 F7 0D 01 09 02 16 10 31 37 32
!--- Hex data omitted. 08:51:10: 8F 87 32 4A 25 27 2A 9B 17 F1 1F C5 67 1E 2A D2 08:51:10:
08:51:10: CRYPTO_PKI:Enveloped Data ... 08:51:10: 30 80 06 09 2A 86 48 86 F7 0D 01 07 03 A0 80
30 !--- Hex data omitted. 08:51:10: 2F C8 94 16 FE 2F 1B 00 00 00 00 00 00 00 00 08:51:10: 00
08:51:10: 08:51:10: CRYPTO_PKI:Signed Data 1311 bytes 08:51:10: 30 80 06 09 2A 86 48 86 F7 0D 01
07 02 A0 80 30 08:51:10: 80 02 01 01 31 0E 30 0C 06 08 2A 86 48 86 F7 0D !--- Hex data omitted.
08:51:10: D0 56 7D 24 59 9C DE 00 00 00 00 00 00 00 00 08:51:10: 08:51:10: CRYPTO_PKI: can not
resolve server name/IP address 08:51:10: CRYPTO_PKI: Using unresolved IP Address 171.69.89.16
08:51:10: CRYPTO_PKI: http connection opened 08:51:13: CRYPTO_PKI: received msg of 656 bytes
08:51:13: CRYPTO_PKI: HTTP response header: HTTP/1.1 200 OK Date: Fri, 11 Jan 2002 19:13:55
Pacific Standard Time Server: Entrust/VPNConnector v5.0 Connection: close Content-Type:
application/x-pki-message 08:51:13: CRYPTO_PKI:Received pki message: 487 types 08:51:13: 30 82
01 E3 06 09 2A 86 48 86 F7 0D 01 07 02 A0 !--- Hex data omitted. 08:51:13: E6 E3 CC 8B 6C 5E 74
9E 6A 0B 7D E1 B7 31 A0 EF 08:51:13: 02 1B C6 F3 C2 B9 86 08:51:13: 08:51:13: CRYPTO_PKI: signed
attr: pki-message-type: 13 01 33 08:51:13: 08:51:13: CRYPTO_PKI: signed attr: pki-status: 13 01
33 08:51:13: 08:51:13: CRYPTO_PKI: signed attr: pki-recipient-nonce: 08:51:13: 04 20 32 46 37 30
36 35 37 45 39 44 43 31 36 31 08:51:13: 39 31 34 39 30 32 33 34 46 35 42 44 30 46 41 31
08:51:13: 46 34 08:51:13: 08:51:13: CRYPTO_PKI: signed attr: pki-transaction-id: 08:51:13: 13 20
35 33 43 46 43 31 35 30 37 36 42 33 35 42 08:51:13: 37 30 42 43 42 39 39 36 44 36 42 46 39 32 38
30 08:51:13: 37 35 08:51:13: 08:51:13: CRYPTO_PKI: status = 102: certificate request pending
08:51:13: CRYPTO_PKI:Write out getcert initial content:84 08:51:13: 30 52 30 2D 31 0B 30 09 06
03 55 04 06 13 02 75 08:51:13: 73 31 0E 30 0C 06 03 55 04 0A 13 05 63 69 73 63 08:51:13: 6F 31
0E 30 0C 06 03 55 04 0B 13 05 73 6A 76 70 08:51:13: 6E 30 21 31 1F 30 1D 06 09 2A 86 48 86 F7 0D
01 08:51:13: 09 02 16 10 31 37 32 30 2D 31 2E 63 69 73 63 6F 08:51:13: 2E 63 6F 6D 08:51:13:
08:51:13: CRYPTO_PKI:Enveloped Data ... 08:51:13: 30 80 06 09 2A 86 48 86 F7 0D 01 07 03 A0 80
30 !--- Hex data omitted. 08:51:13: 08:51:13: CRYPTO_PKI:Signed Data 1738 bytes 08:51:13: 30 80
06 09 2A 86 48 86 F7 0D 01 07 02 A0 80 30 !--- Hex data omitted. 08:51:14: 59 DA 00 00 00 00 00
00 00 00 08:51:14: 08:51:14: CRYPTO_PKI: can not resolve server name/IP address 08:51:14:
CRYPTO_PKI: Using unresolved IP Address 171.69.89.16 08:51:14: CRYPTO_PKI: http connection
opened 08:51:36: CRYPTO_PKI: received msg of 656 bytes 08:51:36: CRYPTO_PKI: HTTP response
header: HTTP/1.1 200 OK Date: Fri, 11 Jan 2002 19:13:58 Pacific Standard Time Server:
Entrust/VPNConnector v5.0 Connection: close Content-Type: application/x-pki-message 08:51:36:
CRYPTO_PKI:Received pki message: 487 types 08:51:36: 30 82 01 E3 06 09 2A 86 48 86 F7 0D 01 07
02 A0 08:51:36: 82 01 D4 30 82 01 D0 02 01 01 31 0E 30 0C 06 08 !--- Hex data omitted. 08:51:36:
E6 E3 CC 8B 6C 5E 74 9E 6A 0B 7D E1 B7 31 A0 EF 08:51:36: 02 1B C6 F3 C2 B9 86 08:51:36:
08:51:36: CRYPTO_PKI: signed attr: pki-message-type: 13 01 33 08:51:36: 08:51:36: CRYPTO_PKI:
signed attr: pki-status: 13 01 33 08:51:36: 08:51:36: CRYPTO_PKI: signed attr: pki-recipient-
nonce: 08:51:36: 04 20 32 46 37 30 36 35 37 45 39 44 43 31 36 31 08:51:36: 39 31 34 39 30 32 33
34 46 35 42 44 30 46 41 31 08:51:36: 46 34 08:51:36: 08:51:36: CRYPTO_PKI: signed attr: pki-
transaction-id: 08:51:36: 13 20 35 33 43 46 43 31 35 30 37 36 42 33 35 42 08:51:36: 37 30 42 43
42 39 39 36 44 36 42 46 39 32 38 30 08:51:36: 37 35 08:51:36: 08:51:36: CRYPTO_PKI: status =
102: certificate request pending 08:51:46: CRYPTO_PKI: All sockets are closed. 08:51:56:
CRYPTO_PKI: All sockets are closed. 08:52:36: CRYPTO_PKI: resend GetCertInitial, 1 08:52:36:
CRYPTO_PKI: resend GetCertInitial for session: 0 08:52:36: CRYPTO_PKI: can not resolve server
name/IP address 08:52:36: CRYPTO_PKI: Using unresolved IP Address 171.69.89.16 08:52:36:
CRYPTO_PKI: http connection opened 08:52:38: CRYPTO_PKI: received msg of 1647 bytes 08:52:38:
CRYPTO_PKI: HTTP response header: HTTP/1.1 200 OK Date: Fri, 11 Jan 2002 19:15:20 Pacific
Standard Time Server: Entrust/VPNConnector v5.0 Connection: close Content-Type: application/x-
pki-message 08:52:38: CRYPTO_PKI:Received pki message: 1478 types 08:52:38: 30 82 05 C2 06 09 2A
86 48 86 F7 0D 01 07 02 A0 !--- Hex data omitted. 08:52:38: B4 0D EC 6D 61 9B 08:52:38:
08:52:38: CRYPTO_PKI: signed attr: pki-message-type: 13 01 33 08:52:38: 08:52:38: CRYPTO_PKI:
signed attr: pki-status: 13 01 30 08:52:38: 08:52:38: CRYPTO_PKI: signed attr: pki-recipient-
nonce: 08:52:38: 04 20 32 41 35 44 31 31 42 34 43 39 46 31 34 32 08:52:38: 30 30 38 34 32 43 35
45 38 36 44 44 43 41 45 44 08:52:38: 33 34 08:52:38: 08:52:38: CRYPTO_PKI: signed attr: pki-
transaction-id: 08:52:38: 13 20 35 33 43 46 43 31 35 30 37 36 42 33 35 42 08:52:38: 37 30 42 43
```

```
42 39 39 36 44 36 42 46 39 32 38 30 08:52:38: 37 35 08:52:38: 08:52:38: CRYPTO_PKI: status =
100: certificate is granted !--- Certificate is granted by the CA. 08:52:38: CRYPTO_PKI:Verified
signed data 985 bytes: 08:52:38: 30 82 03 D5 06 09 2A 86 48 86 F7 0D 01 07 03 A0 !--- Hex data
omitted. 08:52:38: 39 DE 0A 10 3B D1 17 30 79 83 E0 54 D9 59 47 13 08:52:38: 86 9A E5 5D F8 45
3D 61 63 08:52:38: 08:52:38: CRYPTO_PKI:Decrypted enveloped content: 08:52:38: 30 82 02 F3 06 09
2A 86 48 86 F7 0D 01 07 02 A0 08:52:38: 82 02 E4 30 82 02 E0 02 01 01 31 00 30 0B 06 09 !--- Hex
data omitted. 08:52:39: CE 33 54 B3 4A 62 23 65 6E B1 83 D9 7C 24 87 A5 08:52:39: E8 FF D8 50 6F
31 00 08:52:39: 08:52:39: CRYPTO_PKI: All enrollment requests completed. 08:52:39: %CRYPTO-6-
CERTRET: Certificate received from Certificate Authority 08:52:49: CRYPTO_PKI: All enrollment
requests completed.
```

PIX 上的证书调试示例

这区分显示我们运行以下PKI debug命令时的PIX调试，同时还保持来自CA服务器的证书。已在成功完成的会话期间获取这些调试。

```
pix520-1(config)#
pix520-1(config)# debug cr ca
pix520-1(config)#

pix520-1(config)# ca configure cisco ra 20 5

pix520-1(config)# ca authenticate cisco

CI thread sleeps!
Crypto CA thread wakes up!
CRYPTO_PKI: http connection opened
Certificate has the following attributes:

Fingerprint: 1fcdcf2c8 2deda6ac 4819d4c4 b4cff2f5

PKI: key process suspended and continued
CRYPTO_PKI: WARNING: A certificate chain could not
be constructed while selecting certificate status

CRYPTO_PKI: WARNING: A certificate chain could not
be constructed while selecting certificate status

CRYPTO_PKI: Name: CN = First Officer, OU = sjvpn, O = cisco, C = us
CRYPTO_PKI: Name: CN = First Officer, OU = sjvpn, O = cisco, C = us
CRYPTO_PKI: transaction GetCACert completed
CRYPTO_PKI: Name: CN = First Officer, OU = sjvpn, O = cisco, C = us
CRYPTO_PKI: Name: CN = First Officer, OU = sjvpn, O = cisco, C = us
Crypto CA thread sleeps!
pix520-1(config)# !
pix520-1(config)# sh ca cert
CA
CRYPTO_PKI: Name: OU = sjvpn, O = cisco, C = us
CRYPTO_PKI: Name: CN = CRL1, OU = sjvpn, O = cisco, C = us
CRYPTO_PKI: Name: CN = First Officer, OU = sjvpn, O = cisco, C = us
CRYPTO_PKI: Name: CN = CRL1, OU = sjvpn, O = cisco, C = us
CRYPTO_PKI: Name: CN = First Officer, OU = sjvpn, O = cisco, C = us
CRYPTO_PKI: Name: CN = CRL1, OU = sjvpn, O = cisco, C = us Certificate
Status: Available
Certificate Serial Number: 3b2fd307
Key Usage: General Purpose
OU = sjvpn
O = cisco
C = us
CRL Distribution Point:
CN = CRL1, OU = sjvpn, O = cisco, C = us
Validity Date:
```

start date: 22:02:40 Jun 19 2001

end date: 22:32:40 Jun 19 2021

RA Signature Certificate

Certificate Serial Number: 3b2fd319

Key Usage: Signature

CN = First Officer

OU = sjvpn

O = cisco

C = us

CRL Distribution Point:

CN = CRL1, OU = sjvpn, O = cisco, C = us

Validity Date:

start date: 22:03:31 Jun 19 2001

end date: 22:33:31 Jun 19 2004

RA KeyEncipher Certificate

Status: Available

Certificate Serial Number: 3b2fd318

Key Usage: Encryption

CN = First Officer

OU = sjvpn

O = cisco

C = us

CRL Distribution Point:

CN = CRL1, OU = sjvpn, O = cisco, C = us

Validity Date:

start date: 22:03:31 Jun 19 2001

end date: 22:33:31 Jun 19 2004

pix520-1(config)#

Status: Available

pix520-1(config)# **ca enroll cisco 171.69.89.16**

CI thread sleeps!

% Crypto CA thread wakes up!

% Start certificate enrollment ..

% The subject name in the certificate will be: pix520-1.vpn.com

% Certificate request sent to Certificate Authority

% The certificate request fingerprint will be displayed.

pix520-1(config)# Fingerprint: bc923bc0 ee66b336 08a513b1 a226c5c8

CRYPTO_PKI: transaction PKCSReq completed

CRYPTO_PKI: status:

Crypto CA thread sleeps!

PKI: key process suspended and continued

CRYPTO_PKI: http connection opened

CRYPTO_PKI: received msg of 656 bytes

CRYPTO_PKI: WARNING: Certificate, private key or CRL was

not found while selecting CRL

CRYPTO_PKI: signed attr: pki-message-type:

13 01 33

CRYPTO_PKI: signed attr: pki-status:

13 01 33

CRYPTO_PKI: signed attr: pki-recipient-nonce:

04 20 30 36 38 33 34 44 35 46 30 44 31 37 42 39 42 30 30 44
37 37 42 33 44 37 39 42 45 43 43 43 41 41

CRYPTO_PKI: signed attr: pki-transaction-id:

13 20 64 38 32 36 37 37 34 33 31 39 62 65 65 31 62 65 34 36
65 33 63 32 38 37 66 61 65 31 31 36 64 32

CRYPTO_PKI: status = 102: certificate request pending

CRYPTO_PKI: All sockets are closed.

CRYPTO_PKI: All sockets are closed.

CRYPTO_PKI: resend GetCertInitial for session: 0

CRYPTO_PKI: http connection opened

!--- The certificate has been granted by CA! CRYPTO_PKI: received msg of 1720 bytes CRYPTO_PKI:
WARNING: Certificate, private key or CRL was not found while selecting CRL PKI: key process
suspended and continued CRYPTO_PKI: signed attr: pki-message-type: 13 01 33 CRYPTO_PKI: signed
attr: pki-status: 13 01 30 CRYPTO_PKI: signed attr: pki-recipient-nonce: 04 20 34 42 41 36 31 31
31 42 42 35 42 38 42 43 44 31 36 31 34 30 34 44 45 34 45 33 33 41 34 41 46 36 CRYPTO_PKI: signed
attr: pki-transaction-id: 13 20 64 38 32 36 37 37 34 33 31 39 62 65 65 31 62 65 34 36 65 33 63
32 38 37 66 61 65 31 31 36 64 32 CRYPTO_PKI: status = 100: certificate is granted CRYPTO_PKI:
WARNING: Certificate, private key or CRL was not found while selecting CRL CRYPTO_PKI: All
enrollment requests completed. CRYPTO_PKI: All enrollment requests completed. CRYPTO_PKI:
WARNING: Certificate, private key or CRL was not found while selecting CRL

路由器上的 IPsec 调试示例

此部分显示了两个IPsec对等体协商IPsec隧道时，路由器上的IPsec调试。

```
1720-1#debug crypto ipsec
```

```
1720-1#debug crypto isakmp
```

```
1720-1#debug crypto engine
```

```
1720-1#sh debug
```

```
Cryptographic Subsystem:
```

```
  Crypto ISAKMP debugging is on
```

```
  Crypto Engine debugging is on
```

```
  Crypto IPSEC debugging is on
```

```
1720-1#
```

```
3d11h: ISAKMP (0:0): received packet from 172.16.172.34 (N) NEW SA
```

```
3d11h: ISAKMP: local port 500, remote port 500
```

```
3d11h: ISAKMP (0:110): processing SA payload. message ID = 0
```

```
3d11h: ISAKMP (0:110): Checking ISAKMP transform 1 against  
priority 10 policy
```

```
3d11h: ISAKMP:          encryption DES-CBC
```

```
3d11h: ISAKMP:          hash MD5
```

```
3d11h: ISAKMP:          default group 1
```

```
3d11h: ISAKMP:          auth RSA sig
```

```
!--- IKE phase one is accepting certificates as the authentication method. 3d11h: ISAKMP
```

```
(0:110): atts are acceptable. Next payload is 3 3d11h: CryptoEngine0: generate alg parameter
```

```
3d11h: CryptoEngine0: CRYPTO_ISA_DH_CREATE(hw)(ipsec) 3d11h: CRYPTO_ENGINE: Dh phase 1 status: 0
```

```
3d11h: ISAKMP (0:110): SA is doing RSA signature authentication using id type ID_FQDN 3d11h:
```

```
ISAKMP (0:110): sending packet to 172.16.172.34 (R) MM_SA_SETUP 3d11h: ISAKMP (0:110): received  
packet from 172.16.172.34 (R) MM_SA_SETUP 3d11h: ISAKMP (0:110): processing KE payload. message
```

```
ID = 0 3d11h: CryptoEngine0: generate alg parameter 3d11h: CryptoEngine0:
```

```
CRYPTO_ISA_DH_SHARE_SECRET(hw)(ipsec) 3d11h: ISAKMP (0:110): processing NONCE payload. message
```

```
ID = 0 3d11h: CryptoEngine0: calculate pkey hmac for conn id 110 3d11h: CryptoEngine0:
```

```
CRYPTO_ISA_IKE_HMAC(hw)(ipsec) 3d11h: CryptoEngine0: create ISAKMP SKEYID for conn id 110 3d11h:
```

```
CryptoEngine0: CRYPTO_ISA_SA_CREATE(hw)(ipsec) 3d11h: ISAKMP (0:110): SKEYID state generated
```

```
3d11h: ISAKMP (0:110): processing CERT_REQ payload. message ID = 0 3d11h: ISAKMP (0:110): peer
```

wants a CT_X509_SIGNATURE cert 3d11h: ISAKMP (0:110): peer want cert issued by OU = sjvnpn, O = cisco, C = us 3d11h: ISAKMP (0:110): processing vendor id payload 3d11h: ISAKMP (0:110): processing vendor id payload 3d11h: ISAKMP (0:110): speaking to another IOS box! 3d11h: ISAKMP (0:110): sending packet to 172.16.172.34 (R) MM_KEY_EXCH 3d11h: ISAKMP (0:110): received packet from 172.16.172.34 (R) MM_KEY_EXCH 3d11h: CryptoEngine0: CRYPTO_ISA_IKE_DECRYPT(hw)(ipsec) 3d11h: ISAKMP (0:110): processing ID payload. message ID = 0 3d11h: ISAKMP (0:110): processing CERT payload. message ID = 0 3d11h: ISAKMP (0:110): processing a CT_X509_SIGNATURE cert 3d11h: ISAKMP (0:110): processing SIG payload. message ID = 0 3d11h: ISAKMP (110): sa->peer.name = , sa->peer_id.id.id_fqdn.fqdn = pix520-1.vpn.com 3d11h: Crypto engine 0: RSA decrypt with public key 3d11h: CryptoEngine0: CRYPTO_RSA_PUB_DECRYPT 3d11h: CryptoEngine0: generate hmac context for conn id 110 3d11h: CryptoEngine0: CRYPTO_ISA_IKE_HMAC(hw)(ipsec) 3d11h: ISAKMP (0:110): SA has been authenticated with 172.16.172.34 3d11h: ISAKMP (110): ID payload next-payload : 6 type : 2 protocol : 17 port : 500 length : 20 3d11h: ISAKMP (110): Total payload length: 24 3d11h: CryptoEngine0: generate hmac context for conn id 110 3d11h: CryptoEngine0: CRYPTO_ISA_IKE_HMAC(hw)(ipsec) 3d11h: Crypto engine 0: RSA encrypt with private key 3d11h: CryptoEngine0: CRYPTO_RSA_PRIV_ENCRYPT 3d11h: CRYPTO_ENGINE: key process suspended and continued 3d11h: CryptoEngine0: clear dh number for conn id 1 3d11h: CryptoEngine0: CRYPTO_ISA_DH_DELETE(hw)(ipsec) 3d11h: CryptoEngine0: CRYPTO_ISA_IKE_ENCRYPT(hw)(ipsec) 3d11h: ISAKMP (0:110): sending packet to 172.16.172.34 (R) QM_IDLE 3d11h: ISAKMP (0:110): received packet from 172.16.172.34 (R) QM_IDLE 3d11h: CryptoEngine0: CRYPTO_ISA_IKE_DECRYPT(hw)(ipsec) 3d11h: CryptoEngine0: generate hmac context for conn id 110 3d11h: CryptoEngine0: CRYPTO_ISA_IKE_HMAC(hw)(ipsec) 3d11h: ISAKMP (0:110): processing HASH payload. message ID = -140325145 3d11h: ISAKMP (0:110): processing SA payload. message ID = -140325145 3d11h: ISAKMP (0:110): Checking IPsec proposal 1 3d11h: ISAKMP: transform 1, ESP_DES 3d11h: ISAKMP: attributes in transform: 3d11h: ISAKMP: encaps is 1 3d11h: ISAKMP: SA life type in seconds 3d11h: ISAKMP: SA life duration (basic) of 28800 3d11h: ISAKMP: SA life type in kilobytes 3d11h: ISAKMP: SA life duration (VPI) of 0x0 0x46 0x50 0x0 3d11h: ISAKMP: authenticator is HMAC-MD5 3d11h: validate proposal 0 3d11h: ISAKMP (0:110): atts are acceptable. 3d11h: IPSEC(validate_proposal_request): proposal part #1, (key eng. msg.) INBOUND local= 172.16.172.39, remote= 172.16.172.34, local_proxy= 1.1.1.0/255.255.255.0/0/0 (type=4), remote_proxy= 192.168.4.0/255.255.255.0/0/0 (type=4), protocol= ESP, transform= esp-des esp-md5-hmac , lifedur= 0s and 0kb, spi= 0x0(0), conn_id= 0, keysize= 0, flags= 0x4 3d11h: validate proposal request 0 3d11h: ISAKMP (0:110): processing NONCE payload. message ID = -140325145 3d11h: ISAKMP (0:110): processing ID payload. message ID = -140325145 3d11h: ISAKMP (0:110): processing ID payload. message ID = -140325145 3d11h: ISAKMP (0:110): asking for 1 spis from ipsec 3d11h: IPSEC(key_engine): got a queue event... 3d11h: IPSEC(spi_response): getting spi 3611334428 for SA from 172.16.172.39 to 172.16.172.34 for prot 3 3d11h: ISAKMP: received ke message (2/1) 3d11h: CryptoEngine0: generate hmac context for conn id 110 3d11h: CryptoEngine0: CRYPTO_ISA_IKE_HMAC(hw)(ipsec) 3d11h: CryptoEngine0: CRYPTO_ISA_IKE_ENCRYPT(hw)(ipsec) 3d11h: ISAKMP (0:110): sending packet to 172.16.172.34 (R) QM_IDLE 3d11h: ISAKMP (0:110): received packet from 172.16.172.34 (R) QM_IDLE 3d11h: CryptoEngine0: CRYPTO_ISA_IKE_DECRYPT(hw)(ipsec) 3d11h: CryptoEngine0: generate hmac context for conn id 110 3d11h: CryptoEngine0: CRYPTO_ISA_IKE_HMAC(hw)(ipsec) 3d11h: ipsec allocate flow 0 3d11h: ipsec allocate flow 0 3d11h: CryptoEngine0: CRYPTO_ISA_IPSEC_KEY_CREATE(hw)(ipsec) 3d11h: CryptoEngine0: CRYPTO_ISA_IPSEC_KEY_CREATE(hw)(ipsec) 3d11h: ISAKMP (0:110): Creating IPsec SAs 3d11h: inbound SA from 172.16.172.34 to 172.16.172.39 (proxy 192.168.4.0 to 1.1.1.0) 3d11h: has spi 0xD740971C and conn_id 200 and flags 4 3d11h: lifetime of 28800 seconds 3d11h: lifetime of 4608000 kilobytes 3d11h: outbound SA from 172.16.172.39 to 172.16.172.34 (proxy 1.1.1.0 to 192.168.4.0) 3d11h: has spi 939761857 and conn_id 201 and flags C 3d11h: lifetime of 28800 seconds 3d11h: lifetime of 4608000 kilobytes 3d11h: ISAKMP (0:110): deleting node -140325145 error FALSE reason "quick mode done (await())" 3d11h: IPSEC(key_engine): got a queue event... 3d11h: IPSEC(initialize_sas): , (key eng. msg.) INBOUND local= 172.16.172.39, remote= 172.16.172.34, local_proxy= 1.1.1.0/255.255.255.0/0/0 (type=4), remote_proxy= 192.168.4.0/255.255.255.0/0/0 (type=4), protocol= ESP, transform= esp-des esp-md5-hmac , lifedur= 28800s and 4608000kb, spi= 0xD740971C(3611334428), conn_id= 200, keysize= 0, flags= 0x4 3d11h: IPSEC(initialize_sas): , (key eng. msg.) OUTBOUND local= 172.16.172.39, remote= 172.16.172.34, local_proxy= 1.1.1.0/255.255.255.0/0/0 (type=4), remote_proxy= 192.168.4.0/255.255.255.0/0/0 (type=4), protocol= ESP, transform= esp-des esp-md5-hmac , lifedur= 28800s and 4608000kb, spi= 0x3803A0C1(939761857), conn_id= 201, keysize= 0, flags= 0xC 3d11h: IPSEC(create_sa): sa created, (sa) sa_dest= 172.16.172.39, sa_prot= 50, sa_spi= 0xD740971C(3611334428), sa_trans= esp-des esp-md5-hmac , sa_conn_id= 200 3d11h: IPSEC(create_sa): sa created, (sa) sa_dest= 172.16.172.34, sa_prot= 50, sa_spi= 0x3803A0C1(939761857), sa_trans= esp-des esp-md5-hmac , sa_conn_id= 201 3d11h: ISAKMP (0:108): purging SA., sa=811A823C, delme=811A823C 3d11h: CryptoEngine0: delete connection 108 3d11h: CryptoEngine0: CRYPTO_ISA_SA_DELETE(hw)(ipsec) 3d11h: ISAKMP (0:107):

```
purging SA., sa=811FE440, delme=811FE440 3d11h: CryptoEngine0: delete connection 107 3d11h:
CryptoEngine0: CRYPTO_ISA_SA_DELETE(hw)(ipsec) 1720-1#
```

PIX 上的 IPsec 调试示例

此部分显示了两个IPSec对等体协商IPSec隧道时，PIX上的IPSec调试。

```
pix520-1# debug crypto ipsec
pix520-1# debug crypto isakmp
pix520-1# sh debug
debug crypto ipsec 1
debug crypto isakmp 1
debug fover status
    tx      Off
    rx      Off
    open    Off
    cable   Off
    txdmp   Off
    rxdmp   Off
    ifc     Off
    rxip    Off
    txip    Off
    get     Off
    put     Off
    verify  Off
    switch  Off
    fail    Off
    fmsg    Off

ISAKMP (0): beginning Main Mode exchange

crypto_isakmp_process_block: src 172.16.172.39,
dest 172.16.172.34
OAK_MM exchange
ISAKMP (0): processing SA payload. message ID = 0

ISAKMP (0): Checking ISAKMP transform 1 against
priority 10 policy
ISAKMP:      encryption DES-CBC
ISAKMP:      hash MD5
ISAKMP:      default group 1
ISAKMP:      auth RSA sig
ISAKMP (0): atts are acceptable. Next payload is 0
ISAKMP (0): SA is doing RSA signature authentication
using id type ID_FQDN
return status is IKMP_NO_ERROR
crypto_isakmp_process_block: src 172.16.172.39,
dest 172.16.172.34
OAK_MM exchange
ISAKMP (0): processing KE payload. message ID = 0

ISAKMP (0): processing NONCE payload. message ID = 0

ISAKMP (0): processing CERT_REQ payload. message ID = 0
ISAKMP (0): peer wants a CT_X509_SIGNATURE cert
ISAKMP (0): processing vendor id payload

ISAKMP (0): speaking to another IOS box!

ISAKMP (0): ID payload
    next-payload : 6
    type         : 2
    protocol     : 17
```

```
port          : 500
length       : 20
ISAKMP (0): Total payload length: 24
return status is IKMP_NO_ERROR
crypto_isakmp_process_block: src 172.16.172.39,
dest 172.16.172.34
OAK_MM exchange
ISAKMP (0): processing ID payload. message ID = 0
ISAKMP (0): processing CERT payload. message ID = 0
ISAKMP (0): processing a CT_X509_SIGNATURE cert
ISAKMP (0): processing SIG payload. message ID = 0
ISAKMP (0): sa->peer.name = , sa->peer_id.id.id_fqdn.fqdn =
1720-1.cisco.com
ISAKMP (0): SA has been authenticated
```

```
ISAKMP (0): beginning Quick Mode exchange,
M-ID of -140325145:f7a2cee7IPSEC(key_engine):
got a queue event...
IPSEC(spi_response): getting spi 0x3803a0c1(939761857)
for SA from 172.16.172.39 to 172.16.172.34 for prot 3
```

```
return status is IKMP_NO_ERROR
crypto_isakmp_process_block: src 172.16.172.39,
dest 172.16.172.34
OAK_QM exchange
oakley_process_quick_mode:
OAK_QM_IDLE
ISAKMP (0): processing SA payload.
message ID = 4154642151
ISAKMP : Checking IPsec proposal 1
```

```
ISAKMP: transform 1, ESP_DES
ISAKMP:  attributes in transform:
ISAKMP:  encaps is 1
ISAKMP:  SA life type in seconds
ISAKMP:  SA life duration (basic) of 28800
ISAKMP:  SA life type in kilobytes
ISAKMP:  SA life duration (VPI)
of 0x0 0x46 0x50 0x0
ISAKMP:  authenticator is HMAC-MD5
ISAKMP (0): atts are acceptable.
IPSEC(validate_proposal_request): proposal part #1,
(key eng. msg.) dest= 172.16.172.39,
src= 172.16.172.34,
dest_proxy= 1.1.1.0/255.255.255.0/0/0 (type=4),
src_proxy= 192.168.4.0/255.255.255.0/0/0 (type=4),
protocol= ESP, transform= esp-des esp-md5-hmac ,
lifedur= 0s and 0kb,
spi= 0x0(0), conn_id= 0, keysize= 0, flags= 0x4
```

```
ISAKMP (0): processing NONCE payload.
message ID = 4154642151
```

```
ISAKMP (0): processing ID payload.
message ID = 4154642151
ISAKMP (0): processing ID payload.
message ID = 4154642151
ISAKMP (0): processing NOTIFY payload 24576
protocol 3 spi 3611334428,
message ID = 4154642151
ISAKMP (0): processing responder lifetime
ISAKMP (0): responder lifetime of 3600s
ISAKMP (0): Creating IPsec SAs
inbound SA from 172.16.172.39 to
```

```

172.16.172.34 (proxy 1.1.1.0 to 192.168.4.0)
    has spi 939761857 and conn_id 4 and flags 4
    lifetime of 3600 seconds
    lifetime of 4608000 kilobytes
    outbound SA from 172.16.172.34 to
172.16.172.39 (proxy 192.168.4.0 to 1.1.1.0)
    has spi 3611334428 and conn_id 3 and flags 4
    lifetime of 3600 seconds
    lifetime of 4608000 kilobytes
IPSEC(key_engine): got a queue event...
IPSEC(initialize_sas): ,
    (key eng. msg.) dest= 172.16.172.34, src= 172.16.172.39,
    dest_proxy= 192.168.4.0/255.255.255.0/0/0 (type=4),
    src_proxy= 1.1.1.0/255.255.255.0/0/0 (type=4),
    protocol= ESP, transform= esp-des esp-md5-hmac ,
    lifedur= 3600s and 4608000kb,
    spi= 0x3803a0c1(939761857), conn_id= 4, keysize= 0,
flags= 0x4
IPSEC(initialize_sas): ,
    (key eng. msg.) src= 172.16.172.34, dest= 172.16.172.39,
    src_proxy= 192.168.4.0/255.255.255.0/0/0 (type=4),
    dest_proxy= 1.1.1.0/255.255.255.0/0/0 (type=4),
    protocol= ESP, transform= esp-des esp-md5-hmac ,
    lifedur= 3600s and 4608000kb,
    spi= 0xd740971c(3611334428), conn_id= 3, keysize= 0,
flags= 0x4

return status is IKMP_NO_ERROR

pix520-1(config)#

```

[潜在问题](#)

此部分讨论在路由器和PIX上获得认证时产生的常见错误症状、原因和解决方法。

[ISAKMP 身份不匹配](#)

路由器和PIX将FQDN分配给IPSec和证书使用的键上。在IKE或第1阶段协商期间，路由器/IOS将检查证书中的FQDN。所以，我们必须将ISAKMP身份用作主机名，而不是PIX和路由器的地址。在以下示例中，路由器/IOS将检查证书中的FQDN。

```

pix520-1# debug crypto ipsec
pix520-1# debug crypto isakmp
pix520-1# sh debug
debug crypto ipsec 1
debug crypto isakmp 1
debug fover status
    tx      Off
    rx      Off
    open    Off
    cable   Off
    txdmp   Off
    rxdmp   Off
    ifc     Off
    rxip    Off
    txip    Off
    get     Off
    put     Off
    verify  Off
    switch  Off
    fail    Off

```

fmsg Off

ISAKMP (0): beginning Main Mode exchange

crypto_isakmp_process_block: src 172.16.172.39,

dest 172.16.172.34

OAK_MM exchange

ISAKMP (0): processing SA payload. message ID = 0

ISAKMP (0): Checking ISAKMP transform 1 against
priority 10 policy

ISAKMP: encryption DES-CBC

ISAKMP: hash MD5

ISAKMP: default group 1

ISAKMP: auth RSA sig

ISAKMP (0): atts are acceptable. Next payload is 0

ISAKMP (0): SA is doing RSA signature authentication

using id type ID_FQDN

return status is IKMP_NO_ERROR

crypto_isakmp_process_block: src 172.16.172.39,

dest 172.16.172.34

OAK_MM exchange

ISAKMP (0): processing KE payload. message ID = 0

ISAKMP (0): processing NONCE payload. message ID = 0

ISAKMP (0): processing CERT_REQ payload. message ID = 0

ISAKMP (0): peer wants a CT_X509_SIGNATURE cert

ISAKMP (0): processing vendor id payload

ISAKMP (0): speaking to another IOS box!

ISAKMP (0): ID payload

next-payload : 6

type : 2

protocol : 17

port : 500

length : 20

ISAKMP (0): Total payload length: 24

return status is IKMP_NO_ERROR

crypto_isakmp_process_block: src 172.16.172.39,

dest 172.16.172.34

OAK_MM exchange

ISAKMP (0): processing ID payload. message ID = 0

ISAKMP (0): processing CERT payload. message ID = 0

ISAKMP (0): processing a CT_X509_SIGNATURE cert

ISAKMP (0): processing SIG payload. message ID = 0

ISAKMP (0): sa->peer.name = , sa->peer_id.id.id_fqdn.fqdn =

1720-1.cisco.com

ISAKMP (0): SA has been authenticated

ISAKMP (0): beginning Quick Mode exchange,

M-ID of -140325145:f7a2cee7IPSEC(key_engine):

got a queue event...

IPSEC(spi_response): getting spi 0x3803a0c1(939761857)

for SA from 172.16.172.39 to 172.16.172.34 for prot 3

return status is IKMP_NO_ERROR

crypto_isakmp_process_block: src 172.16.172.39,

dest 172.16.172.34

OAK_QM exchange

oakley_process_quick_mode:

OAK_QM_IDLE

ISAKMP (0): processing SA payload.

```
message ID = 4154642151
ISAKMP : Checking IPSec proposal 1

ISAKMP: transform 1, ESP_DES
ISAKMP:  attributes in transform:
ISAKMP:  encaps is 1
ISAKMP:  SA life type in seconds
ISAKMP:  SA life duration (basic) of 28800
ISAKMP:  SA life type in kilobytes
ISAKMP:  SA life duration (VPI)
of 0x0 0x46 0x50 0x0
ISAKMP:  authenticator is HMAC-MD5
ISAKMP (0): atts are acceptable.
IPSEC(validate_proposal_request): proposal part #1,
(key eng. msg.) dest= 172.16.172.39,
src= 172.16.172.34,
dest_proxy= 1.1.1.0/255.255.255.0/0/0 (type=4),
src_proxy= 192.168.4.0/255.255.255.0/0/0 (type=4),
protocol= ESP, transform= esp-des esp-md5-hmac ,
lifedur= 0s and 0kb,
spi= 0x0(0), conn_id= 0, keysize= 0, flags= 0x4

ISAKMP (0): processing NONCE payload.
message ID = 4154642151

ISAKMP (0): processing ID payload.
message ID = 4154642151
ISAKMP (0): processing ID payload.
message ID = 4154642151
ISAKMP (0): processing NOTIFY payload 24576
protocol 3 spi 3611334428,
message ID = 4154642151
ISAKMP (0): processing responder lifetime
ISAKMP (0): responder lifetime of 3600s
ISAKMP (0): Creating IPSec SAs
inbound SA from 172.16.172.39 to
172.16.172.34 (proxy 1.1.1.0 to 192.168.4.0)
has spi 939761857 and conn_id 4 and flags 4
lifetime of 3600 seconds
lifetime of 4608000 kilobytes
outbound SA from 172.16.172.34 to
172.16.172.39 (proxy 192.168.4.0 to 1.1.1.0)
has spi 3611334428 and conn_id 3 and flags 4
lifetime of 3600 seconds
lifetime of 4608000 kilobytes
IPSEC(key_engine): got a queue event...
IPSEC(initialize_sas): ,
(key eng. msg.) dest= 172.16.172.34, src= 172.16.172.39,
dest_proxy= 192.168.4.0/255.255.255.0/0/0 (type=4),
src_proxy= 1.1.1.0/255.255.255.0/0/0 (type=4),
protocol= ESP, transform= esp-des esp-md5-hmac ,
lifedur= 3600s and 4608000kb,
spi= 0x3803a0c1(939761857), conn_id= 4, keysize= 0,
flags= 0x4
IPSEC(initialize_sas): ,
(key eng. msg.) src= 172.16.172.34, dest= 172.16.172.39,
src_proxy= 192.168.4.0/255.255.255.0/0/0 (type=4),
dest_proxy= 1.1.1.0/255.255.255.0/0/0 (type=4),
protocol= ESP, transform= esp-des esp-md5-hmac ,
lifedur= 3600s and 4608000kb,
spi= 0xd740971c(3611334428), conn_id= 3, keysize= 0,
flags= 0x4

return status is IKMP_NO_ERROR
```

pix520-1(config)#

路由器调试：

pix520-1# **debug crypto ipsec**

pix520-1# **debug crypto isakmp**

pix520-1# **sh debug**

debug crypto ipsec 1

debug crypto isakmp 1

debug fover status

tx Off

rx Off

open Off

cable Off

txdmp Off

rxdmp Off

ifc Off

rxip Off

txip Off

get Off

put Off

verify Off

switch Off

fail Off

fmsg Off

ISAKMP (0): beginning Main Mode exchange

crypto_isakmp_process_block: src 172.16.172.39,

dest 172.16.172.34

OAK_MM exchange

ISAKMP (0): processing SA payload. message ID = 0

ISAKMP (0): Checking ISAKMP transform 1 against
priority 10 policy

ISAKMP: encryption DES-CBC

ISAKMP: hash MD5

ISAKMP: default group 1

ISAKMP: auth RSA sig

ISAKMP (0): atts are acceptable. Next payload is 0

ISAKMP (0): SA is doing RSA signature authentication

using id type ID_FQDN

return status is IKMP_NO_ERROR

crypto_isakmp_process_block: src 172.16.172.39,

dest 172.16.172.34

OAK_MM exchange

ISAKMP (0): processing KE payload. message ID = 0

ISAKMP (0): processing NONCE payload. message ID = 0

ISAKMP (0): processing CERT_REQ payload. message ID = 0

ISAKMP (0): peer wants a CT_X509_SIGNATURE cert

ISAKMP (0): processing vendor id payload

ISAKMP (0): speaking to another IOS box!

ISAKMP (0): ID payload

next-payload : 6

type : 2

protocol : 17

port : 500

length : 20

ISAKMP (0): Total payload length: 24


```
return status is IKMP_NO_ERROR
crypto_isakmp_process_block: src 172.16.172.39,
dest 172.16.172.34
OAK_MM exchange
ISAKMP (0): processing ID payload. message ID = 0
ISAKMP (0): processing CERT payload. message ID = 0
ISAKMP (0): processing a CT_X509_SIGNATURE cert
ISAKMP (0): processing SIG payload. message ID = 0
ISAKMP (0): sa->peer.name = , sa->peer_id.id.id_fqdn.fqdn =
1720-1.cisco.com
ISAKMP (0): SA has been authenticated
```

```
ISAKMP (0): beginning Quick Mode exchange,
M-ID of -140325145:f7a2cee7IPSEC(key_engine):
got a queue event...
IPSEC(spi_response): getting spi 0x3803a0c1(939761857)
for SA from 172.16.172.39 to 172.16.172.34 for prot 3
```

```
return status is IKMP_NO_ERROR
crypto_isakmp_process_block: src 172.16.172.39,
dest 172.16.172.34
OAK_QM exchange
oakley_process_quick_mode:
OAK_QM_IDLE
ISAKMP (0): processing SA payload.
message ID = 4154642151
ISAKMP : Checking IPsec proposal 1
```

```
ISAKMP: transform 1, ESP_DES
ISAKMP: attributes in transform:
ISAKMP: encaps is 1
ISAKMP: SA life type in seconds
ISAKMP: SA life duration (basic) of 28800
ISAKMP: SA life type in kilobytes
ISAKMP: SA life duration (VPI)
of 0x0 0x46 0x50 0x0
ISAKMP: authenticator is HMAC-MD5
ISAKMP (0): atts are acceptable.
IPSEC(validate_proposal_request): proposal part #1,
(key eng. msg.) dest= 172.16.172.39,
src= 172.16.172.34,
dest_proxy= 1.1.1.0/255.255.255.0/0/0 (type=4),
src_proxy= 192.168.4.0/255.255.255.0/0/0 (type=4),
protocol= ESP, transform= esp-des esp-md5-hmac ,
lifedur= 0s and 0kb,
spi= 0x0(0), conn_id= 0, keysize= 0, flags= 0x4
```

```
ISAKMP (0): processing NONCE payload.
message ID = 4154642151
```

```
ISAKMP (0): processing ID payload.
message ID = 4154642151
ISAKMP (0): processing ID payload.
message ID = 4154642151
ISAKMP (0): processing NOTIFY payload 24576
protocol 3 spi 3611334428,
message ID = 4154642151
ISAKMP (0): processing responder lifetime
ISAKMP (0): responder lifetime of 3600s
ISAKMP (0): Creating IPsec SAs
inbound SA from 172.16.172.39 to
172.16.172.34 (proxy 1.1.1.0 to 192.168.4.0)
has spi 939761857 and conn_id 4 and flags 4
lifetime of 3600 seconds
```

```
lifetime of 4608000 kilobytes
outbound SA from 172.16.172.34 to
172.16.172.39 (proxy 192.168.4.0 to 1.1.1.0)
has spi 3611334428 and conn_id 3 and flags 4
lifetime of 3600 seconds
lifetime of 4608000 kilobytes
IPSEC(key_engine): got a queue event...
IPSEC(initialize_sas): ,
(key eng. msg.) dest= 172.16.172.34, src= 172.16.172.39,
dest_proxy= 192.168.4.0/255.255.255.0/0/0 (type=4),
src_proxy= 1.1.1.0/255.255.255.0/0/0 (type=4),
protocol= ESP, transform= esp-des esp-md5-hmac ,
lifedur= 3600s and 4608000kb,
spi= 0x3803a0c1(939761857), conn_id= 4, keysize= 0,
flags= 0x4
IPSEC(initialize_sas): ,
(key eng. msg.) src= 172.16.172.34, dest= 172.16.172.39,
src_proxy= 192.168.4.0/255.255.255.0/0/0 (type=4),
dest_proxy= 1.1.1.0/255.255.255.0/0/0 (type=4),
protocol= ESP, transform= esp-des esp-md5-hmac ,
lifedur= 3600s and 4608000kb,
spi= 0xd740971c(3611334428), conn_id= 3, keysize= 0,
flags= 0x4
```

```
return status is IKMP_NO_ERROR
```

```
pix520-1(config)#
```

PIX 调试 :

```
pix520-1# debug crypto ipsec
pix520-1# debug crypto isakmp
pix520-1# sh debug
debug crypto ipsec 1
debug crypto isakmp 1
debug fover status
```

```
tx      Off
rx      Off
open    Off
cable   Off
txdmp   Off
rxdmp   Off
ifc     Off
rxip    Off
txip    Off
get     Off
put     Off
verify  Off
switch  Off
fail    Off
fmsg    Off
```

```
ISAKMP (0): beginning Main Mode exchange
```

```
crypto_isakmp_process_block: src 172.16.172.39,
dest 172.16.172.34
OAK_MM exchange
ISAKMP (0): processing SA payload. message ID = 0
```

```
ISAKMP (0): Checking ISAKMP transform 1 against
priority 10 policy
ISAKMP:      encryption DES-CBC
ISAKMP:      hash MD5
ISAKMP:      default group 1
```

```
ISAKMP:      auth RSA sig
ISAKMP (0):  atts are acceptable. Next payload is 0
ISAKMP (0):  SA is doing RSA signature authentication
using id type ID_FQDN
return status is IKMP_NO_ERROR
crypto_isakmp_process_block: src 172.16.172.39,
dest 172.16.172.34
OAK_MM exchange
ISAKMP (0):  processing KE payload. message ID = 0

ISAKMP (0):  processing NONCE payload. message ID = 0

ISAKMP (0):  processing CERT_REQ payload. message ID = 0
ISAKMP (0):  peer wants a CT_X509_SIGNATURE cert
ISAKMP (0):  processing vendor id payload

ISAKMP (0):  speaking to another IOS box!

ISAKMP (0):  ID payload
      next-payload : 6
      type          : 2
      protocol      : 17
      port          : 500
      length        : 20
ISAKMP (0):  Total payload length: 24
return status is IKMP_NO_ERROR
crypto_isakmp_process_block: src 172.16.172.39,
dest 172.16.172.34
OAK_MM exchange
ISAKMP (0):  processing ID payload. message ID = 0
ISAKMP (0):  processing CERT payload. message ID = 0
ISAKMP (0):  processing a CT_X509_SIGNATURE cert
ISAKMP (0):  processing SIG payload. message ID = 0
ISAKMP (0):  sa->peer.name = , sa->peer_id.id.id_fqdn.fqdn =
1720-1.cisco.com
ISAKMP (0):  SA has been authenticated

ISAKMP (0):  beginning Quick Mode exchange,
M-ID of -140325145:f7a2cee7IPSEC(key_engine):
got a queue event...
IPSEC(spi_response): getting spi 0x3803a0c1(939761857)
      for SA from 172.16.172.39 to 172.16.172.34 for prot 3

return status is IKMP_NO_ERROR
crypto_isakmp_process_block: src 172.16.172.39,
dest 172.16.172.34
OAK_QM exchange
oakley_process_quick_mode:
OAK_QM_IDLE
ISAKMP (0):  processing SA payload.
message ID = 4154642151
ISAKMP : Checking IPsec proposal 1

ISAKMP: transform 1, ESP_DES
ISAKMP:  attributes in transform:
ISAKMP:  encaps is 1
ISAKMP:  SA life type in seconds
ISAKMP:  SA life duration (basic) of 28800
ISAKMP:  SA life type in kilobytes
ISAKMP:  SA life duration (VPI)
of 0x0 0x46 0x50 0x0
ISAKMP:  authenticator is HMAC-MD5
ISAKMP (0):  atts are acceptable.
IPSEC(validate_proposal_request): proposal part #1,
```

```

(key eng. msg.) dest= 172.16.172.39,
  src= 172.16.172.34,
  dest_proxy= 1.1.1.0/255.255.255.0/0/0 (type=4),
  src_proxy= 192.168.4.0/255.255.255.0/0/0 (type=4),
  protocol= ESP, transform= esp-des esp-md5-hmac ,
  lifedur= 0s and 0kb,
  spi= 0x0(0), conn_id= 0, keysize= 0, flags= 0x4

ISAKMP (0): processing NONCE payload.
message ID = 4154642151

ISAKMP (0): processing ID payload.
message ID = 4154642151
ISAKMP (0): processing ID payload.
message ID = 4154642151
ISAKMP (0): processing NOTIFY payload 24576
  protocol 3 spi 3611334428,
  message ID = 4154642151
ISAKMP (0): processing responder lifetime
ISAKMP (0): responder lifetime of 3600s
ISAKMP (0): Creating IPsec SAs
  inbound SA from 172.16.172.39 to
172.16.172.34 (proxy 1.1.1.0 to 192.168.4.0)
  has spi 939761857 and conn_id 4 and flags 4
  lifetime of 3600 seconds
  lifetime of 4608000 kilobytes
  outbound SA from 172.16.172.34 to
172.16.172.39 (proxy 192.168.4.0 to 1.1.1.0)
  has spi 3611334428 and conn_id 3 and flags 4
  lifetime of 3600 seconds
  lifetime of 4608000 kilobytes
IPSEC(key_engine): got a queue event...
IPSEC(initialize_sas): ,
  (key eng. msg.) dest= 172.16.172.34, src= 172.16.172.39,
  dest_proxy= 192.168.4.0/255.255.255.0/0/0 (type=4),
  src_proxy= 1.1.1.0/255.255.255.0/0/0 (type=4),
  protocol= ESP, transform= esp-des esp-md5-hmac ,
  lifedur= 3600s and 4608000kb,
  spi= 0x3803a0c1(939761857), conn_id= 4, keysize= 0,
  flags= 0x4
IPSEC(initialize_sas): ,
  (key eng. msg.) src= 172.16.172.34, dest= 172.16.172.39,
  src_proxy= 192.168.4.0/255.255.255.0/0/0 (type=4),
  dest_proxy= 1.1.1.0/255.255.255.0/0/0 (type=4),
  protocol= ESP, transform= esp-des esp-md5-hmac ,
  lifedur= 3600s and 4608000kb,
  spi= 0xd740971c(3611334428), conn_id= 3, keysize= 0,
  flags= 0x4

return status is IKMP_NO_ERROR

```

```
pix520-1(config)#
```

[时间和日期不匹配](#)

PIX和路由器的证书在某一特定时间间隔内有效，如下例所示。

```

pix520-1# debug crypto ipsec
pix520-1# debug crypto isakmp
pix520-1# sh debug
debug crypto ipsec 1
debug crypto isakmp 1
debug fover status

```

tx Off
rx Off
open Off
cable Off
txdmp Off
rxdmp Off
ifc Off
rxip Off
txip Off
get Off
put Off
verify Off
switch Off
fail Off
fmsg Off

ISAKMP (0): beginning Main Mode exchange

crypto_isakmp_process_block: src 172.16.172.39,
dest 172.16.172.34
OAK_MM exchange

ISAKMP (0): processing SA payload. message ID = 0

ISAKMP (0): Checking ISAKMP transform 1 against
priority 10 policy

ISAKMP: encryption DES-CBC
ISAKMP: hash MD5
ISAKMP: default group 1
ISAKMP: auth RSA sig

ISAKMP (0): atts are acceptable. Next payload is 0

ISAKMP (0): SA is doing RSA signature authentication
using id type ID_FQDN

return status is IKMP_NO_ERROR

crypto_isakmp_process_block: src 172.16.172.39,
dest 172.16.172.34
OAK_MM exchange

ISAKMP (0): processing KE payload. message ID = 0

ISAKMP (0): processing NONCE payload. message ID = 0

ISAKMP (0): processing CERT_REQ payload. message ID = 0

ISAKMP (0): peer wants a CT_X509_SIGNATURE cert

ISAKMP (0): processing vendor id payload

ISAKMP (0): speaking to another IOS box!

ISAKMP (0): ID payload

next-payload : 6
type : 2
protocol : 17
port : 500
length : 20

ISAKMP (0): Total payload length: 24

return status is IKMP_NO_ERROR

crypto_isakmp_process_block: src 172.16.172.39,
dest 172.16.172.34
OAK_MM exchange

ISAKMP (0): processing ID payload. message ID = 0

ISAKMP (0): processing CERT payload. message ID = 0

ISAKMP (0): processing a CT_X509_SIGNATURE cert

ISAKMP (0): processing SIG payload. message ID = 0

ISAKMP (0): sa->peer.name = , sa->peer_id.id.id_fqdn.fqdn =
1720-1.cisco.com

ISAKMP (0): SA has been authenticated

```
ISAKMP (0): beginning Quick Mode exchange,
M-ID of -140325145:f7a2cee7IPSEC(key_engine):
got a queue event...
IPSEC(spi_response): getting spi 0x3803a0c1(939761857)
  for SA from 172.16.172.39 to 172.16.172.34 for prot 3

return status is IKMP_NO_ERROR
crypto_isakmp_process_block: src 172.16.172.39,
dest 172.16.172.34
OAK_QM exchange
oakley_process_quick_mode:
OAK_QM_IDLE
ISAKMP (0): processing SA payload.
message ID = 4154642151
ISAKMP : Checking IPsec proposal 1

ISAKMP: transform 1, ESP_DES
ISAKMP:  attributes in transform:
ISAKMP:  encaps is 1
ISAKMP:  SA life type in seconds
ISAKMP:  SA life duration (basic) of 28800
ISAKMP:  SA life type in kilobytes
ISAKMP:  SA life duration (VPI)
of 0x0 0x46 0x50 0x0
ISAKMP:  authenticator is HMAC-MD5
ISAKMP (0): atts are acceptable.
IPSEC(validate_proposal_request): proposal part #1,
(key eng. msg.) dest= 172.16.172.39,
src= 172.16.172.34,
dest_proxy= 1.1.1.0/255.255.255.0/0/0 (type=4),
src_proxy= 192.168.4.0/255.255.255.0/0/0 (type=4),
protocol= ESP, transform= esp-des esp-md5-hmac ,
lifedur= 0s and 0kb,
spi= 0x0(0), conn_id= 0, keysize= 0, flags= 0x4

ISAKMP (0): processing NONCE payload.
message ID = 4154642151

ISAKMP (0): processing ID payload.
message ID = 4154642151
ISAKMP (0): processing ID payload.
message ID = 4154642151
ISAKMP (0): processing NOTIFY payload 24576
  protocol 3 spi 3611334428,
  message ID = 4154642151
ISAKMP (0): processing responder lifetime
ISAKMP (0): responder lifetime of 3600s
ISAKMP (0): Creating IPsec SAs
  inbound SA from 172.16.172.39 to
172.16.172.34 (proxy 1.1.1.0 to 192.168.4.0)
  has spi 939761857 and conn_id 4 and flags 4
  lifetime of 3600 seconds
  lifetime of 4608000 kilobytes
  outbound SA from 172.16.172.34 to
172.16.172.39 (proxy 192.168.4.0 to 1.1.1.0)
  has spi 3611334428 and conn_id 3 and flags 4
  lifetime of 3600 seconds
  lifetime of 4608000 kilobytes
IPSEC(key_engine): got a queue event...
IPSEC(initialize_sas): ,
(key eng. msg.) dest= 172.16.172.34, src= 172.16.172.39,
dest_proxy= 192.168.4.0/255.255.255.0/0/0 (type=4),
src_proxy= 1.1.1.0/255.255.255.0/0/0 (type=4),
```

```
protocol= ESP, transform= esp-des esp-md5-hmac ,
lifedur= 3600s and 4608000kb,
spi= 0x3803a0c1(939761857), conn_id= 4, keysize= 0,
flags= 0x4
IPSEC(initialize_sas): ,
(key eng. msg.) src= 172.16.172.34, dest= 172.16.172.39,
src_proxy= 192.168.4.0/255.255.255.0/0/0 (type=4),
dest_proxy= 1.1.1.0/255.255.255.0/0/0 (type=4),
protocol= ESP, transform= esp-des esp-md5-hmac ,
lifedur= 3600s and 4608000kb,
spi= 0xd740971c(3611334428), conn_id= 3, keysize= 0,
flags= 0x4

return status is IKMP_NO_ERROR
```

```
pix520-1(config)#
```

以下 **show** 命令输出还演示了时间间隔。

```
1720-1#sh crypto ca crls
```

```
CRL Issuer Name:
OU = sjvpn, O = cisco, C = us
LastUpdate: 16:17:34 PST Jan 10 2002
NextUpdate: 17:17:34 PST Jan 11 2002
Retrieved from CRL Distribution Point:
LDAP: CN = CRL1, OU = sjvpn, O = cisco, C = us
```

如果路由器或PIX上的时钟日期和时间不在证书开始与终止日期和CRL的下一更新/最近更新之间，那么在第1阶段协商期间，您会收到以下错误信息：

路由器调试：

```
1720-1#sh crypto ca crls
```

```
CRL Issuer Name:
OU = sjvpn, O = cisco, C = us
LastUpdate: 16:17:34 PST Jan 10 2002
NextUpdate: 17:17:34 PST Jan 11 2002
Retrieved from CRL Distribution Point:
LDAP: CN = CRL1, OU = sjvpn, O = cisco, C = us
```

在本示例中，路由器时间设置为 1993 年 2 月 28 日 16:07:02，该时间不是 CA 所要求的有效时间。要解决此问题，请在路由器上设置合适的时间。

```
1720-1#clock set 01:05:01 january 11 2002
```

```
1720-1#sh clock
01:05:04.903 PST Fri Jan 11 2002
1720-1#
```

[HTTP/TCP 端口 80 被阻塞](#)

在认证和用CA服务器登记期间，路由器和PIX使用TCP端口80。如果有登记或认证问题，请验证router/PIX和CA服务器之间的HTTP/TCP端口80 没被阻拦。

[PIX/路由器没有 CRL](#)

因为我们没有在PIX/路由器上指定**crl optional**命令，在第一阶段的协商期间，两个设备都将检查CRL。如果 CRL 不存在，您将看到以下错误。

PIX 调试：

```
1720-1#clock set 01:05:01 january 11 2002
```

```
1720-1#sh clock
01:05:04.903 PST Fri Jan 11 2002
1720-1#
```

要解决此问题，通过发出**ca crl request ca nickname**命令从CA服务器获得证书;我们使用了 **cr ca crl request Cisco**。

删除证书和 RSA 密钥对

您可能需要从路由器或PIX上删除数字证书或RSA密钥对。

删除路由器证书和 RSA 密钥对

命令：

- **no crypto ca identity ca nickname** - 删除路由器证书。
- **crypto key zeroize rsa** - 删除 RSA 密钥对。

要删除证书，请按以下示例进行操作：

```
1720-1#conf t
Enter configuration commands, one per line. End with CNTL/Z.
1720-1(config)#no crypto ca identity vpn
% Removing an identity will destroy all certificates received from
the related Certificate Authority.

Are you sure you want to do this? [yes/no]: y
% Be sure to ask the CA administrator to revoke your certificates.

No enrollment sessions are currently active.
```

```
1720-1(config)#
1720-1#sh cr ca cert
1720-1#
!--- The certificates are no longer available.
```

要在路由器上删除 RSA 密钥对，请按以下示例进行操作：

```
1720-1(config)#crypto key zeroize rsa
% Keys to be removed are named 1720-1.cisco.com.
Do you really want to remove these keys? [yes/no]: y
1720-1(config)#.
```

```
1720-1#sh crypto key mypubkey rsa
1720-1#
!-- The RSA key pairs are no longer available.
```

删除 PIX 证书和 RSA 密钥对

命令：

- **no ca identity ca nickname** - 从 PIX 中删除证书。
- **ca zeroize rsa** - 从 PIX 中删除 RSA 密钥对。

要在 PIX 上删除证书，请按以下示例进行操作：

```
pix520-1(config)# no ca identity cisco
% Removing the identity will destroy all certificates.
% Be sure to ask the CA administrator to revoke your certificates.
```



```
pix520-1(config)# sh cr ca cert
```

```
pix520-1(config)#
```

```
!--- The certificates are no longer available.
```

要在 PIX 上删除 RSA 密钥对，请按以下示例进行操作：

```
pix520-1(config)# ca zeroize rsa
```

```
pix520-1(config)# sh ca mypubkey rsa
```

```
!--- The RSA key pairs are no longer available.
```

相关信息

- [IPSec 支持页面](#)
- [PIX 支持页](#)
- [请求注解 \(RFC\)](#)
- [技术支持 - Cisco Systems](#)