

如何选择根据在智能服务网关(ISG)的域名的AAA列表

目录

[简介](#)

[先决条件](#)

[要求](#)

[使用的组件](#)

[配置](#)

[网络图](#)

[配置](#)

[验证](#)

[故障排除](#)

[调试输出示例](#)

简介

本文提供一个方式选择验证、授权和统计(AAA)组，并且所有功能附加对它(等等来源IP，RADIUS服务器)由进行在流入点对点协议(PPP)用户的获取的域的一选择。

[先决条件](#)

[要求](#)

Cisco 建议您了解以下主题：

- 虚拟专用拨号网络(VPDN)
- 智能服务Gateway(ISG)

提示： ::参考[智能服务网关配置指南](#)为了获取与ISG的熟悉。

提示： 参考[VPDN配置指南](#)为了获取与基本VPDN功能的熟悉。

使用的组件

本文档中的信息基于以下软件和硬件版本：

- 运行IOS-XE版本03.17.01.S的ASR1K。
- 自由RADIUS服务器。

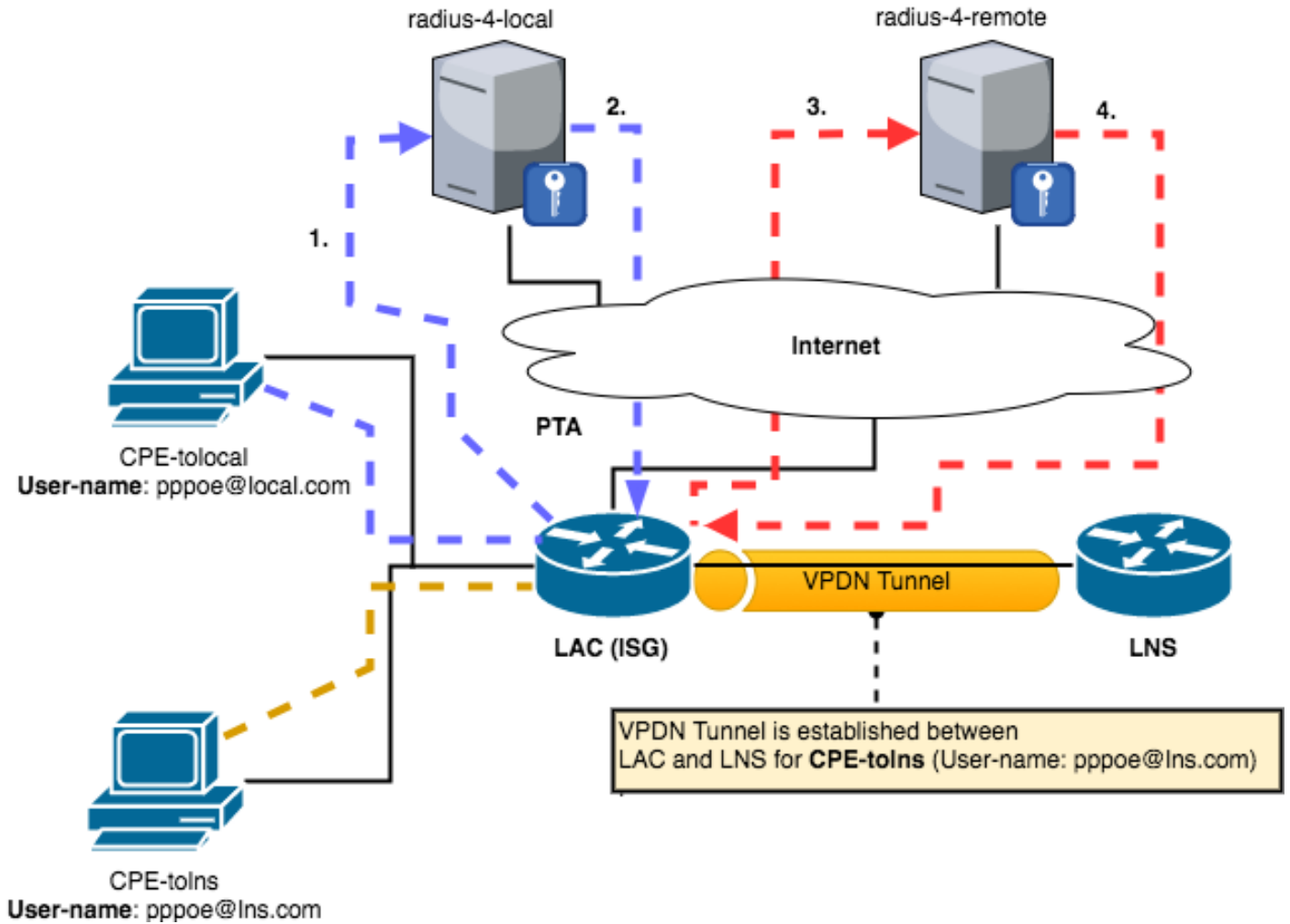
本文档中的信息都是基于特定实验室环境中的设备编写的。本文档中使用的所有设备最初均采用原始（默认）配置。如果您使用的是真实网络，请确保您已经了解所有命令的潜在影响。

配置

请使用在此部分描述为了配置功能在本文描述的信息。

注意： 这为PPP用户只是有效。

网络图



配置

注意： 此设置通过创建与另外dot1q标记的两子接口模拟两个PPPoE (PPP over Ethernet)客户端在客户驻地设备(CPE)路由器并且创建与另外PPP用户名的两拨号接口。因此此方式两不同的客户端在拓扑里可能被模拟。

这是在CPE路由器使用的配置。

```
interface Ethernet0/1.101
description ppp using isg
encapsulation dot1q 101
pppoe enable group global
pppoe-client dial-pool-number 2
```

```

!
interface Ethernet0/1.102
  description ppp using isg
  encapsulation dot1Q 102
  pppoe enable
  pppoe-client dial-pool-number 3
!
!--- Following dialer will be used for first CPE with user name pppoe@local.com.
! interface Dialer2
  ip address negotiated
  encapsulation ppp
  shutdown
  dialer pool 2
  ppp pap sent-username pppoe@local.com password 0 cisco !--- Following dialer will be used for
second CPE with user name pppoe@lns.com.
! interface Dialer3
  ip address negotiated
  encapsulation ppp
  shutdown
  dialer pool 3
  ppp pap sent-username pppoe@lns.com password 0 cisco

```

这是在LAC的配置(ISG)设备使用。

```

!
hostname lac
!
aaa new-model
!
!
aaa group server radius AAA-4-LOCAL ! => Group that will treat the user with domain local.com
  server name RAD-4-LOCAL
  ip radius source-interface Ethernet0/0
!
aaa group server radius AAA-4-FORWARD ! => Group that will treat the user with domain lns.com
  server name RAD-4-FORWARD
  ip radius source-interface Loopback1
!
aaa authentication login default local
aaa authentication ppp default group radius
aaa authentication ppp AAA-4-LOCAL group AAA-4-LOCAL ! => List will call the right group
aaa authentication ppp AAA-4-FORWARD group AAA-4-FORWARD ! => List will call the right group
aaa authorization exec default local
aaa authorization network default group radius
!
aaa session-id common
!
vpdn enable
!
class-map type control match-all PPP-4-FORWARD ! => class to match the domain to forward to lns
  match unauthenticated-domain lns.com
  match protocol ppp
!
class-map type control match-all PPP-4-LOCAL ! => class to match the domain for local
termination
  match unauthenticated-domain local.com
  match protocol ppp
!
class-map type control match-all PPP ! => class to match ppp packets.
  match protocol ppp
!
policy-map type control PPPOE ! => All pppoe will first hit this control

```

```

policy
  class type control PPP event session-start
    11 collect identifier unauthenticated-domain
    12 service-policy type control DOMAIN      ! => Now we forward to another policy that will
make the selection
  !
  !
policy-map type control DOMAIN
  class type control PPP-4-LOCAL event session-start      ! => If domain is local.com we use this
    20 authenticate aaa list AAA-4-LOCAL
  !
  class type control PPP-4-FORWARD event session-start ! => If domain is lns.com we use this
    20 authenticate aaa list AAA-4-FORWARD
  !
  !
bba-group pppoe ppp-isg
  virtual-template 2
  !
  !
  !
interface Loopback0
  ip address 172.19.1.2 255.255.255.255
  !
interface Loopback1
  ip address 172.17.21.6 255.255.255.255      ! => radius request for domain lns.com use this
  !
interface Ethernet0/0
  ip address 172.16.21.6 255.255.255.252      ! => radius request for domain local.com use
this
  !
interface Ethernet0/1
  no ip address
  !
interface Ethernet0/1.101
  encapsulation dot1Q 101
  pppoe enable group ppp-isg
  !
interface Ethernet0/1.102
  encapsulation dot1Q 102
  pppoe enable group ppp-isg
  !

interface Virtual-Template2
  ip unnumbered Loopback0
  ppp authentication pap
  service-policy type control PPPOE
  !
radius server RAD-4-LOCAL
  address ipv4 172.16.21.5 auth-port 32645 acct-port 32646
  key cisco
  !
radius server RAD-4-FORWARD
  address ipv4 172.16.21.5 auth-port 11645 acct-port 11646
  key cisco
  !
这是在LNS设备使用的配置。

  !
hostname lac
  !
aaa new-model
  !
  !

```

```

aaa group server radius AAA-4-LOCAL      !=> Group that will treat the user with domain local.com
server name RAD-4-LOCAL
ip radius source-interface Ethernet0/0
!
aaa group server radius AAA-4-FORWARD    !=> Group that will treat the user with domain lns.com
server name RAD-4-FORWARD
ip radius source-interface Loopback1
!
aaa authentication login default local
aaa authentication ppp default group radius
aaa authentication ppp AAA-4-LOCAL group AAA-4-LOCAL      !=> List will call the right group
aaa authentication ppp AAA-4-FORWARD group AAA-4-FORWARD !=> List will call the right group
aaa authorization exec default local
aaa authorization network default group radius
!
aaa session-id common
!
vpdn enable
!
class-map type control match-all PPP-4-FORWARD !=> class to match the domain to forward to lns
  match unauthenticated-domain lns.com
  match protocol ppp
!
class-map type control match-all PPP-4-LOCAL    !=> class to match the domain for local
  termination
  match unauthenticated-domain local.com
  match protocol ppp
!
class-map type control match-all PPP          !=> class to match ppp packets.
  match protocol ppp
!
policy-map type control PPOE                  !=> All pppoe will first hit this control
  policy
    class type control PPP event session-start
      11 collect identifier unauthenticated-domain
      12 service-policy type control DOMAIN      !=> Now we forward to another policy that will
  make the selection
!
!
policy-map type control DOMAIN
  class type control PPP-4-LOCAL event session-start !=> If domain is local.com we use this
    20 authenticate aaa list AAA-4-LOCAL
!
  class type control PPP-4-FORWARD event session-start !=> If domain is lns.com we use this
    20 authenticate aaa list AAA-4-FORWARD
!
!
bba-group pppoe ppp-isg
  virtual-template 2
!
!
!
interface Loopback0
  ip address 172.19.1.2 255.255.255.255
!
interface Loopback1
  ip address 172.17.21.6 255.255.255.255      !=> radius request for domain lns.com use this
!
interface Ethernet0/0
  ip address 172.16.21.6 255.255.255.252      !=> radius request for domain local.com use
  this
!
interface Ethernet0/1
  no ip address

```

```

!
interface Ethernet0/1.101
 encapsulation dot1Q 101
 pppoe enable group ppp-isg
!
interface Ethernet0/1.102
 encapsulation dot1Q 102
 pppoe enable group ppp-isg
!

interface Virtual-Template2
 ip unnumbered Loopback0
 ppp authentication pap
 service-policy type control PPPOE
!
radius server RAD-4-LOCAL
 address ipv4 172.16.21.5 auth-port 32645 acct-port 32646
 key cisco
!
radius server RAD-4-FORWARD
 address ipv4 172.16.21.5 auth-port 11645 acct-port 11646
 key cisco
!

```

验证

此部分提供您能使用为了验证的信息您的配置适当地工作，并且一次PPPoE会话在LAC终止，并且其他会话转发对根据域名的LNS。

```

!
hostname lac
!
aaa new-model
!
!
aaa group server radius AAA-4-LOCAL      ! => Group that will treat the user with domain local.com
 server name RAD-4-LOCAL
 ip radius source-interface Ethernet0/0
!
aaa group server radius AAA-4-FORWARD   ! => Group that will treat the user with domain lns.com
 server name RAD-4-FORWARD
 ip radius source-interface Loopback1
!
aaa authentication login default local
aaa authentication ppp default group radius
aaa authentication ppp AAA-4-LOCAL group AAA-4-LOCAL      ! => List will call the right group
aaa authentication ppp AAA-4-FORWARD group AAA-4-FORWARD ! => List will call the right group
aaa authorization exec default local
aaa authorization network default group radius
!
aaa session-id common
!
vpdn enable
!
class-map type control match-all PPP-4-FORWARD ! => class to match the domain to forward to lns
 match unauthenticated-domain lns.com
 match protocol ppp
!
class-map type control match-all PPP-4-LOCAL   ! => class to match the domain for local
 termination
 match unauthenticated-domain local.com
 match protocol ppp

```

```

!
class-map type control match-all PPP                               !=> class to match ppp packets.
  match protocol ppp
!
policy-map type control PPPOE                                     !=> All pppoe will first hit this control
policy
  class type control PPP event session-start
    11 collect identifier unauthenticated-domain
    12 service-policy type control DOMAIN                           !=> Now we forward to another policy that will
make the selection
!
!
policy-map type control DOMAIN
  class type control PPP-4-LOCAL event session-start             !=> If domain is local.com we use this
    20 authenticate aaa list AAA-4-LOCAL
!
  class type control PPP-4-FORWARD event session-start           !=> If domain is lns.com we use this
    20 authenticate aaa list AAA-4-FORWARD
!
!
bba-group pppoe ppp-isg
  virtual-template 2
!
!
!
interface Loopback0
  ip address 172.19.1.2 255.255.255.255
!
interface Loopback1
  ip address 172.17.21.6 255.255.255.255                         !=> radius request for domain lns.com use this
!
interface Ethernet0/0
  ip address 172.16.21.6 255.255.255.252                         !=> radius request for domain local.com use
this
!
interface Ethernet0/1
  no ip address
!
interface Ethernet0/1.101
  encapsulation dot1Q 101
  pppoe enable group ppp-isg
!
interface Ethernet0/1.102
  encapsulation dot1Q 102
  pppoe enable group ppp-isg
!

interface Virtual-Template2
  ip unnumbered Loopback0
  ppp authentication pap
  service-policy type control PPPOE
!
radius server RAD-4-LOCAL
  address ipv4 172.16.21.5 auth-port 32645 acct-port 32646
  key cisco
!
radius server RAD-4-FORWARD
  address ipv4 172.16.21.5 auth-port 11645 acct-port 11646
  key cisco
!

```

VPDN通道设立在LAC和LNS之间pppoe@lns.com用户的此命令展览。

```
lac#sh vpdn tunnel
```

L2TP Tunnel Information Total tunnels 1 sessions 1

LocTunID	RemTunID	Remote Name	State	Remote Address	Sessn Count	L2TP VPDN Group	Class/
7085	24548	lms	est	172.19.1.1	1	VPDN ip addr 17	lac#

故障排除

此部分提供您能使用为了排除故障您的配置的信息。

注意：参考[与会话监听的排除故障的ISG并且分配条件调试Cisco](#)条款为了排除故障ISG会话。

调试输出示例

此debug输出反射根据域名的本地用户local.com如何在LAC设备验证并且终止。

```
*Jan 17 14:36:24.339: SSS PM [uid:39][B4728100][AAA ID:50]: Authen status update; is now
"unauthen"
*Jan 17 14:36:24.339: SSS PM [uid:39][B4728100][AAA ID:50]: IDMGR: assert authen status
"unauthen"
*Jan 17 14:36:24.339: SSS PM [uid:39][B4728100][AAA ID:50]: IDMGR: send event Session Update
*Jan 17 14:36:24.339: SSS PM [uid:39][B4728100][AAA ID:50]: Username key not found in set domain
key API
*Jan 17 14:36:24.339: SSS PM [uid:39][B4728100][AAA ID:50]: Username key not found in set domain
key API
*Jan 17 14:36:24.339: SSS PM [uid:39][B4728100][AAA ID:50]: Updated NAS port for AAA ID 50
*Jan 17 14:36:24.339: SSS PM [uid:39][B4728100][AAA ID:50]: IDMGR: send event Session Update
*Jan 17 14:36:24.339: SSS PM [uid:39][B4728100][AAA ID:50]: Client block is NULL in get client
block with handle D8000027
*Jan 17 14:36:24.339: SSS PM [uid:39][B4728100][AAA ID:50]: Updated key list:
*Jan 17 14:36:24.339: SSS PM [uid:39][B4728100][AAA ID:50]: Input Interface =
"Ethernet0/1.101"
*Jan 17 14:36:24.339: SSS PM [uid:39][B4728100][AAA ID:50]: Access-Type = 3 (PPPoE)
*Jan 17 14:36:24.339: SSS PM [uid:39][B4728100][AAA ID:50]: Protocol-Type = 0 (PPP Access
Protocol)
*Jan 17 14:36:24.339: SSS PM [uid:39][B4728100][AAA ID:50]: Media-Type = 1 (Ethernet)
*Jan 17 14:36:24.339: SSS PM [uid:39][B4728100][AAA ID:50]: Authen-Status = 1
(Unauthenticated)
*Jan 17 14:36:24.339: SSS PM [uid:39][B4728100][AAA ID:50]: Nasport = PPPoEoVLAN: slot 0
adapter 0 port 1 sub-interface 101 IP 0.0.0.0 VPI 0 VCI 0 VLAN 101
*Jan 17 14:36:24.339: SSS PM [uid:39][B4728100][AAA ID:50]: Username key not found in set domain
key API
*Jan 17 14:36:24.339: SSS PM [uid:39][B4728100][AAA ID:50]: Username key not found in set domain
key API
*Jan 17 14:36:24.339: SSS PM [uid:39][B4728100][AAA ID:50]: Client block is NULL in get client
block with handle D8000027
*Jan 17 14:36:24.339: SSS PM [uid:39][B4728100][AAA ID:50]: Updated key list:
*Jan 17 14:36:24.339: SSS PM [uid:39][B4728100][AAA ID:50]: Input Interface =
"Ethernet0/1.101"
*Jan 17 14:36:24.339: SSS PM [uid:39][B4728100][AAA ID:50]: Access-Type = 3 (PPPoE)
*Jan 17 14:36:24.339: SSS PM [uid:39][B4728100][AAA ID:50]: Protocol-Type = 0 (PPP Access
Protocol)
*Jan 17 14:36:24.339: SSS PM [uid:39][B4728100][AAA ID:50]: Media-Type = 1 (Ethernet)
*Jan 17 14:36:24.339: SSS PM [uid:39][B4728100][AAA ID:50]: Authen-Status = 1
(Unauthenticated)
*Jan 17 14:36:24.339: SSS PM [uid:39][B4728100][AAA ID:50]: Nasport = PPPoEoVLAN: slot 0
adapter 0 port 1 sub-interface 101 IP 0.0.0.0 VPI 0 VCI 0 VLAN 101
```


*Jan 17 14:36:24.339: SSS PM [uid:39][B4728100][AAA ID:50]: Session-Handle = 1358954575 (5100004F)
*Jan 17 14:36:24.339: SSS PM [uid:39][B4728100][AAA ID:50]: SM Policy invoke - Service Selection Request
*Jan 17 14:36:24.339: SSS PM [uid:39][B4728100][AAA ID:50]: Access type PPPOE
*Jan 17 14:36:24.339: SSS PM [uid:39][B4728100][AAA ID:50]: Successfully added key SUBTYPE_CONVERTED as FALSE
*Jan 17 14:36:24.339: SSS PM [uid:39][B4728100][AAA ID:50]: RULE: Looking for a rule for event session-start
*Jan 17 14:36:24.339: SSS PM [uid:39][B4728100][AAA ID:50]: RULE: Intf CloneSrc Vt2: service-rule any: PPPOE
*Jan 17 14:36:24.339: SSS PM [uid:39][B4728100][AAA ID:50]: RULE: Evaluate "PPPOE" for session-start
*Jan 17 14:36:24.340: SSS PM [uid:39][B4728100][AAA ID:50]: RULE: Match keys against "PPPOE":
*Jan 17 14:36:24.340: SSS PM [uid:39][B4728100][AAA ID:50]: RULE: Input Interface = "Ethernet0/1.101"
*Jan 17 14:36:24.340: SSS PM [uid:39][B4728100][AAA ID:50]: RULE: Converted-Session = 0 (NO)
*Jan 17 14:36:24.340: SSS PM [uid:39][B4728100][AAA ID:50]: RULE: Protocol-Type = 0 (PPP Access Protocol)
*Jan 17 14:36:24.340: SSS PM [uid:39][B4728100][AAA ID:50]: RULE: Media-Type = 1 (Ethernet)
*Jan 17 14:36:24.340: SSS PM [uid:39][B4728100][AAA ID:50]: RULE: Authen-Status = 1 (Unauthenticated)
*Jan 17 14:36:24.340: SSS PM [uid:39][B4728100][AAA ID:50]: RULE: Nasport = PPPoEoVLAN: slot 0 adapter 0 port 1 sub-interface 101 IP 0.0.0.0 VPI 0 VCI 0 VLAN 101
*Jan 17 14:36:24.340: SSS PM [uid:39][B4728100][AAA ID:50]: RULE: Session-Handle = 1358954575 (5100004F)
*Jan 17 14:36:24.340: SSS PM [uid:39][B4728100][AAA ID:50]: CONTROL-CLASS-MAP: : [0] match-all PPP
*Jan 17 14:36:24.340: SSS PM [uid:39][B4728100][AAA ID:50]: CONTROL-CLASS-MAP: : [0] match identifier protocol ppp [TRUE]
*Jan 17 14:36:24.340: SSS PM [uid:39][B4728100][AAA ID:50]: CONTROL-CLASS-MAP: : [0] match-all PPP
*Jan 17 14:36:24.340: SSS PM [uid:39][B4728100][AAA ID:50]: CONTROL-CLASS-MAP: : PPP [TRUE]
*Jan 17 14:36:24.340: SSS PM [uid:39][B4728100][AAA ID:50]: RULE: Matched "PPPOE/PPP event session-start"
*Jan 17 14:36:24.340: SSS PM [uid:39][B4728100][AAA ID:50]: RULE: Matched "PPPOE/PPP event session-start/11 collect identifier unauthenticated-domain "
*Jan 17 14:36:24.340: SSS PM [uid:39][B4728100][AAA ID:50]: RULE[0]: Start
*Jan 17 14:36:24.340: SSS PM [uid:39][B4728100][AAA ID:50]: RULE[0]: PPPOE/PPP event session-start/11 collect identifier unauthenticated-domain
*Jan 17 14:36:24.340: SSS PM [uid:39][B4728100][AAA ID:50]: SIP [PPPoE] can provide more keys
*Jan 17 14:36:24.340: SSS PM [uid:39][B4728100][AAA ID:50]: RULE[0]: Need key Unauth-Domain
*Jan 17 14:36:24.340: SSS PM [uid:39][B4728100][AAA ID:50]: RULE[1]: Start
*Jan 17 14:36:24.340: SSS PM [uid:39][B4728100][AAA ID:50]: RULE[1]: PPPOE/PPP event session-start/11 collect identifier unauthenticated-domain
*Jan 17 14:36:24.340: SSS PM [uid:39][B4728100][AAA ID:50]: Event <need keys>, State: initial-req to need-init-keys
*Jan 17 14:36:24.340: SSS PM [uid:39][B4728100][AAA ID:50]: Policy reply - Need More Keys
*Jan 17 14:36:24.340: SSS PM [uid:39][B4728100][AAA ID:50]: IDMGR: Need: Unauth-Domain
*Jan 17 14:36:24.340: SSS PM [uid:39][B4728100][AAA ID:50]: Asking client for more keys
*Jan 17 14:36:24.340: SSS PM [uid:39][B4728100][AAA ID:50]: Policy reply - Need More Keys
*Jan 17 14:36:24.340: PPP: Alloc Context [B174CE60]
*Jan 17 14:36:24.340: ppp39 PPP: Phase is ESTABLISHING
*Jan 17 14:36:24.341: SSS PM: ANCP not enabled on 'Ethernet0/1.101' - not retrieving default shaper value
*Jan 17 14:36:24.341: ppp39 PPP: Using vpn set call direction
*Jan 17 14:36:24.341: ppp39 PPP: Treating connection as a callin
*Jan 17 14:36:24.341: ppp39 PPP: Session handle[99000027] Session id[39]
*Jan 17 14:36:24.341: ppp39 LCP: Event[OPEN] State[Initial to Starting]
*Jan 17 14:36:24.341: ppp39 PPP LCP: Enter passive mode, state[Stopped]
*Jan 17 14:36:24.342: ppp39 LCP: I CONFREQ [Stopped] id 1 len 10
*Jan 17 14:36:24.342: ppp39 LCP: MagicNumber 0xBCD9A1B6 (0x0506BCD9A1B6)
*Jan 17 14:36:24.343: ppp39 LCP: O CONFREQ [Stopped] id 1 len 18
*Jan 17 14:36:24.343: ppp39 LCP: MRU 1492 (0x010405D4)

*Jan 17 14:36:24.343: ppp39 LCP: AuthProto PAP (0x0304C023)
*Jan 17 14:36:24.343: ppp39 LCP: MagicNumber 0x010DA1F7 (0x0506010DA1F7)
*Jan 17 14:36:24.343: ppp39 LCP: O CONFACK [Stopped] id 1 len 10
*Jan 17 14:36:24.343: ppp39 LCP: MagicNumber 0xBCD9A1B6 (0x0506BCD9A1B6)
*Jan 17 14:36:24.343: ppp39 LCP: Event[Receive ConfReq+] State[Stopped to ACKsent]
*Jan 17 14:36:24.343: ppp39 LCP: I CONFNAK [ACKsent] id 1 len 8
*Jan 17 14:36:24.343: ppp39 LCP: MRU 1500 (0x010405DC)
*Jan 17 14:36:24.343: ppp39 LCP: O CONFREQ [ACKsent] id 2 len 18
*Jan 17 14:36:24.343: ppp39 LCP: MRU 1500 (0x010405DC)
*Jan 17 14:36:24.343: ppp39 LCP: AuthProto PAP (0x0304C023)
*Jan 17 14:36:24.343: ppp39 LCP: MagicNumber 0x010DA1F7 (0x0506010DA1F7)
*Jan 17 14:36:24.343: ppp39 LCP: Event[Receive ConfNak/Rej] State[ACKsent to ACKsent]
*Jan 17 14:36:24.343: ppp39 LCP: I CONFACK [ACKsent] id 2 len 18
*Jan 17 14:36:24.343: ppp39 LCP: MRU 1500 (0x010405DC)
*Jan 17 14:36:24.343: ppp39 LCP: AuthProto PAP (0x0304C023)
*Jan 17 14:36:24.343: ppp39 LCP: MagicNumber 0x010DA1F7 (0x0506010DA1F7)
*Jan 17 14:36:24.343: ppp39 LCP: Event[Receive ConfAck] State[ACKsent to Open]
*Jan 17 14:36:24.366: ppp39 PPP: Queue PAP code[1] id[1]
*Jan 17 14:36:24.369: ppp39 PPP: Phase is AUTHENTICATING, by this end
*Jan 17 14:36:24.369: ppp39 PAP: Redirect packet to ppp39
***Jan 17 14:36:24.369: ppp39 PAP: I AUTH-REQ id 1 len 26 from "pppoe@local.com"**
***Jan 17 14:36:24.370: ppp39 PAP: Authenticating peer pppoe@local.com**
***Jan 17 14:36:24.370: ppp39 PPP: Phase is FORWARDING, Attempting Forward**
*Jan 17 14:36:24.370: ppp39 LCP: State is Open
*Jan 17 14:36:24.370: SSS PM [uid:39][B4728100][AAA ID:50]: Username key not found in set domain
key API
*Jan 17 14:36:24.370: SSS PM [uid:39][B4728100][AAA ID:50]: Client block is NULL in get client
block with handle D8000027
*Jan 17 14:36:24.370: SSS PM [uid:39][B4728100][AAA ID:50]: Updated key list:
*Jan 17 14:36:24.370: SSS PM [uid:39][B4728100][AAA ID:50]: Access-Type = 0 (PPP)
*Jan 17 14:36:24.370: SSS PM [uid:39][B4728100][AAA ID:50]: Input Interface =
"Ethernet0/1.101"
*Jan 17 14:36:24.370: SSS PM [uid:39][B4728100][AAA ID:50]: Converted-Session = 0 (NO)
*Jan 17 14:36:24.370: SSS PM [uid:39][B4728100][AAA ID:50]: Media-Type = 1 (Ethernet)
*Jan 17 14:36:24.370: SSS PM [uid:39][B4728100][AAA ID:50]: Authen-Status = 1
(Unauthenticated)
*Jan 17 14:36:24.370: SSS PM [uid:39][B4728100][AAA ID:50]: Nasport = PPPoEoVLAN: slot 0
adapter 0 port 1 sub-interface 101 IP 0.0.0.0 VPI 0 VCI 0 VLAN 101
*Jan 17 14:36:24.370: SSS PM [uid:39][B4728100][AAA ID:50]: Session-Handle = 1358954575
(5100004F)
*Jan 17 14:36:24.370: SSS PM [uid:39][B4728100][AAA ID:50]: Protocol-Type = 0 (PPP Access
Protocol)
*Jan 17 14:36:24.370: SSS PM [uid:39][B4728100][AAA ID:50]: Unauth-User = "pppoe@local.com"
*Jan 17 14:36:24.370: SSS PM [uid:39][B4728100][AAA ID:50]: Unauth-Domain = "local.com"
*Jan 17 14:36:24.370: SSS PM [uid:39][B4728100][AAA ID:50]: SM Policy invoke - Got More Keys
*Jan 17 14:36:24.370: SSS PM [uid:39][B4728100][AAA ID:50]: Access type PPP
*Jan 17 14:36:24.370: SSS PM [uid:39][B4728100][AAA ID:50]: RULE[0]: Start
*Jan 17 14:36:24.370: SSS PM [uid:39][B4728100][AAA ID:50]: RULE[0]: PPPOE/PPP event session-
start/11 collect identifier unauthenticated-domain
*Jan 17 14:36:24.370: SSS PM [uid:39][B4728100][AAA ID:50]: State: need-init-keys to initial-req
*Jan 17 14:36:24.370: SSS PM [uid:39][B4728100][AAA ID:50]: RULE[0]: Have key Unauth-Domain
*Jan 17 14:36:24.370: SSS PM [uid:39][B4728100][AAA ID:50]: RULE[1]: Start
*Jan 17 14:36:24.370: SSS PM [uid:39][B4728100][AAA ID:50]: RULE[1]: PPPOE/PPP event session-
start/11 collect identifier unauthenticated-domain
*Jan 17 14:36:24.370: SSS PM [uid:39][B4728100][AAA ID:50]: RULE[2]: Start
*Jan 17 14:36:24.370: SSS PM [uid:39][B4728100][AAA ID:50]: RULE[2]: PPPOE/PPP event session-
start/12 service-policy type control DOMAIN
*Jan 17 14:36:24.370: SSS PM [uid:39][B4728100][AAA ID:50]: RULE: Match keys against
"DOMAIN":
*Jan 17 14:36:24.370: SSS PM [uid:39][B4728100][AAA ID:50]: RULE: Input Interface =
"Ethernet0/1.101"
*Jan 17 14:36:24.370: SSS PM [uid:39][B4728100][AAA ID:50]: RULE: Converted-Session = 0 (NO)
*Jan 17 14:36:24.370: SSS PM [uid:39][B4728100][AAA ID:50]: RULE: Media-Type = 1 (Ethernet)
*Jan 17 14:36:24.370: SSS PM [uid:39][B4728100][AAA ID:50]: RULE: Authen-Status = 1

(Unauthenticated)

```
*Jan 17 14:36:24.370: SSS PM [uid:39][B4728100][AAA ID:50]: RULE:      Nasport = PPPoEoVLAN: slot
0 adapter 0 port 1 sub-interface 101 IP 0.0.0.0 VPI 0 VCI 0 VLAN 101
*Jan 17 14:36:24.370: SSS PM [uid:39][B4728100][AAA ID:50]: RULE:      Session-Handle =
1358954575 (5100004F)
*Jan 17 14:36:24.370: SSS PM [uid:39][B4728100][AAA ID:50]: RULE:      Protocol-Type = 0 (PPP
Access Protocol)
*Jan 17 14:36:24.370: SSS PM [uid:39][B4728100][AAA ID:50]: RULE:      Unauth-User =
"pppoe@local.com"
*Jan 17 14:36:24.370: SSS PM [uid:39][B4728100][AAA ID:50]: RULE:      Unauth-Domain =
"local.com"
*Jan 17 14:36:24.370: SSS PM [uid:39][B4728100][AAA ID:50]: CONTROL-CLASS-MAP: : [0] match-all
PPP-4-LOCAL
*Jan 17 14:36:24.370: SSS PM [uid:39][B4728100][AAA ID:50]: CONTROL-CLASS-MAP: : [0] match
identifier unauthenticated-domain local.com [TRUE]
*Jan 17 14:36:24.370: SSS PM [uid:39][B4728100][AAA ID:50]: CONTROL-CLASS-MAP: : [0] match
identifier protocol ppp [TRUE]
*Jan 17 14:36:24.370: SSS PM [uid:39][B4728100][AAA ID:50]: CONTROL-CLASS-MAP: : [0] match-all
PPP-4-LOCAL
*Jan 17 14:36:24.370: SSS PM [uid:39][B4728100][AAA ID:50]: CONTROL-CLASS-MAP: : PPP-4-LOCAL
[TRUE]
*Jan 17 14:36:24.370: SSS PM [uid:39][B4728100][AAA ID:50]: RULE:      Matched "DOMAIN/PPP-4-LOCAL
event session-start"
*Jan 17 14:36:24.371: SSS PM [uid:39][B4728100][AAA ID:50]: RULE[3]: Start
*Jan 17 14:36:24.371: SSS PM [uid:39][B4728100][AAA ID:50]: RULE[3]: DOMAIN/PPP-4-LOCAL event
session-start/20 authenticate aaa list AAA-4-LOCAL
*Jan 17 14:36:24.371: SSS PM [uid:39][B4728100][AAA ID:50]: SIP [PPP] can provide more keys
*Jan 17 14:36:24.371: SSS PM [uid:39][B4728100][AAA ID:50]: RULE[3]: Using AAA-Authen-Method-
List AAA-4-LOCAL
*Jan 17 14:36:24.371: SSS PM [uid:39][B4728100][AAA ID:50]: RULE[3]: Need key Auth-User
*Jan 17 14:36:24.371: SSS PM [uid:39][B4728100][AAA ID:50]: RULE[4]: Start
*Jan 17 14:36:24.371: SSS PM [uid:39][B4728100][AAA ID:50]: RULE[4]: DOMAIN/PPP-4-LOCAL event
session-start/20 authenticate aaa list AAA-4-LOCAL
*Jan 17 14:36:24.371: SSS PM [uid:39][B4728100][AAA ID:50]: Event <need keys>, State: initial-
req to need-init-keys
*Jan 17 14:36:24.371: SSS PM [uid:39][B4728100][AAA ID:50]: Policy reply - Need More Keys
*Jan 17 14:36:24.371: SSS PM [uid:39][B4728100][AAA ID:50]: IDMGR: Need: Auth-User
*Jan 17 14:36:24.371: SSS PM [uid:39][B4728100][AAA ID:50]: IDMGR: ask for authen status
*Jan 17 14:36:24.371: SSS PM [uid:39][B4728100][AAA ID:50]: IDMGR: request, Query Session
Authenticated Status
*Jan 17 14:36:24.371: SSS PM [uid:39][B4728100][AAA ID:50]: IDMGR: reply, Query Session
Authenticated Status = no-record-found
*Jan 17 14:36:24.371: SSS PM [uid:39][B4728100][AAA ID:50]: IDMGR: session NOT authenticated
*Jan 17 14:36:24.371: SSS PM [uid:39][B4728100][AAA ID:50]: Event <idmgr didn't get keys>,
State: need-init-keys to need-init-keys
*Jan 17 14:36:24.371: SSS PM [uid:39][B4728100][AAA ID:50]: Asking client for more keys
*Jan 17 14:36:24.371: SSS PM [uid:39][B4728100][AAA ID:50]: Policy reply - Need More Keys
*Jan 17 14:36:24.371: ppp39 PPP: Phase is AUTHENTICATING, Unauthenticated User
*Jan 17 14:36:24.371: AAA/AUTHEN/PPP (00000032): Pick method list 'AAA-4-LOCAL' <= Correct list
for local.com
*Jan 17 14:36:24.371: RADIUS/ENCODE(00000032):Orig. component type = PPPoE
*Jan 17 14:36:24.371: RADIUS: DSL line rate attributes successfully added
*Jan 17 14:36:24.371: RADIUS(00000032): Config NAS IP: 172.16.21.6
*Jan 17 14:36:24.371: RADIUS(00000032): Config NAS IPv6: ::
*Jan 17 14:36:24.371: RADIUS/ENCODE(00000032): acct_session_id: 40
*Jan 17 14:36:24.371: RADIUS(00000032): sending
*Jan 17 14:36:24.371: RADIUS(00000032): Send Access-Request to 172.16.21.5:32645 id 1645/50, len
137
*Jan 17 14:36:24.371: RADIUS: authenticator E2 2A B0 15 24 CA 79 8C - A5 61 E4 1E C5 52 BC EF
*Jan 17 14:36:24.371: RADIUS: Framed-Protocol [7] 6 PPP [1]
*Jan 17 14:36:24.371: RADIUS: User-Name [1] 17 "pppoe@local.com"
*Jan 17 14:36:24.371: RADIUS: User-Password [2] 18 *
*Jan 17 14:36:24.371: RADIUS: NAS-Port-Type [61] 6 Virtual [5]
*Jan 17 14:36:24.371: RADIUS: NAS-Port [5] 6 0
```

```

*Jan 17 14:36:24.371: RADIUS: NAS-Port-Id [87] 11 "0/0/1/101"
*Jan 17 14:36:24.371: RADIUS: Vendor, Cisco [26] 41
*Jan 17 14:36:24.371: RADIUS: Cisco AVpair [1] 35 "client-mac-address=aabb.cc00.d210"
*Jan 17 14:36:24.371: RADIUS: Service-Type [6] 6 Framed [2]
*Jan 17 14:36:24.371: RADIUS: NAS-IP-Address [4] 6 172.16.21.6 <= Correct Nas for
Local.com
*Jan 17 14:36:24.371: RADIUS(00000032): Sending a IPv4 Radius Packet
*Jan 17 14:36:24.372: RADIUS(00000032): Started 5 sec timeout
*Jan 17 14:36:24.372: RADIUS: Received from id 1645/50 172.16.21.5:32645, Access-Accept, len 60
*Jan 17 14:36:24.372: RADIUS: authenticator 1A EE FC 44 78 8A 56 DF - 41 57 45 27 4C A7 59 C6
*Jan 17 14:36:24.372: RADIUS: Vendor, Cisco [26] 34
*Jan 17 14:36:24.372: RADIUS: Cisco AVpair [1] 28 "ip:ip-unnumbered=loopback0"
*Jan 17 14:36:24.372: RADIUS: Framed-IP-Address [8] 6 179.1.1.1
*Jan 17 14:36:24.372: RADIUS(00000032): Received from id 1645/50
*Jan 17 14:36:24.373: ppp39 PPP: Phase is FORWARDING, Attempting Forward
*Jan 17 14:36:24.373: SSS PM [uid:39][B4728100][AAA ID:50]: Authen status update; is now
"authen"
*Jan 17 14:36:24.373: SSS PM [uid:39][B4728100][AAA ID:50]: IDMGR: assert authen status "authen"
*Jan 17 14:36:24.373: SSS PM [uid:39][B4728100][AAA ID:50]: IDMGR: send event Session Update
*Jan 17 14:36:24.373: SSS PM [uid:39][B4728100][AAA ID:50]: IDMGR: with username
"pppoe@local.com"
*Jan 17 14:36:24.373: SSS PM [uid:39][B4728100][AAA ID:50]: Session activation: ok
*Jan 17 14:36:24.373: SSS PM [uid:39][B4728100][AAA ID:50]: Client block is NULL in get client
block with handle D8000027
*Jan 17 14:36:24.373: SSS PM [uid:39][B4728100][AAA ID:50]: Updated key list:
*Jan 17 14:36:24.373: SSS PM [uid:39][B4728100][AAA ID:50]: AAA-Attr-List = FB0003D0
*Jan 17 14:36:24.373: SSS PM [uid:39][B4728100][AAA ID:50]: ip-unnumbered 0
"loopback0"
*Jan 17 14:36:24.373: SSS PM [uid:39][B4728100][AAA ID:50]: addr 0
179.1.1.1
*Jan 17 14:36:24.373: SSS PM [uid:39][B4728100][AAA ID:50]: Access-Type = 0 (PPP)
*Jan 17 14:36:24.373: SSS PM [uid:39][B4728100][AAA ID:50]: Unauth-User = "pppoe@local.com"
*Jan 17 14:36:24.373: SSS PM [uid:39][B4728100][AAA ID:50]: Unauth-Domain = "local.com"
*Jan 17 14:36:24.373: SSS PM [uid:39][B4728100][AAA ID:50]: Input Interface =
"Ethernet0/1.101"
*Jan 17 14:36:24.373: SSS PM [uid:39][B4728100][AAA ID:50]: Converted-Session = 0 (NO)
*Jan 17 14:36:24.373: SSS PM [uid:39][B4728100][AAA ID:50]: Media-Type = 1 (Ethernet)
*Jan 17 14:36:24.373: SSS PM [uid:39][B4728100][AAA ID:50]: Authen-Status = 0 (Authenticated)
*Jan 17 14:36:24.373: SSS PM [uid:39][B4728100][AAA ID:50]: Nasport = PPPoEoVLAN: slot 0
adapter 0 port 1 sub-interface 101 IP 0.0.0.0 VPI 0 VCI 0 VLAN 101
*Jan 17 14:36:24.373: SSS PM [uid:39][B4728100][AAA ID:50]: Session-Handle = 1358954575
(5100004F)
*Jan 17 14:36:24.373: SSS PM [uid:39][B4728100][AAA ID:50]: AAA-Authen-Method-List = "AAA-4-
LOCAL"
*Jan 17 14:36:24.373: SSS PM [uid:39][B4728100][AAA ID:50]: Protocol-Type = 0 (PPP Access
Protocol)
*Jan 17 14:36:24.373: SSS PM [uid:39][B4728100][AAA ID:50]: Final = 1 (YES)
*Jan 17 14:36:24.373: SSS PM [uid:39][B4728100][AAA ID:50]: Auth-User = "pppoe@local.com"
*Jan 17 14:36:24.373: SSS PM [uid:39][B4728100][AAA ID:50]: Auth-Domain = "local.com"
*Jan 17 14:36:24.373: SSS PM [uid:39][B4728100][AAA ID:50]: SM Policy invoke - Got More Keys
*Jan 17 14:36:24.373: SSS PM [uid:39][B4728100][AAA ID:50]: Access type PPP: final key
*Jan 17 14:36:24.373: SSS PM [uid:39][B4728100][AAA ID:50]: Must apply config before continuing
*Jan 17 14:36:24.373: SSS PM [uid:39][B4728100][AAA ID:50]: Handling Config Request from Client
*Jan 17 14:36:24.373: SSS PM [uid:39][B4728100][AAA ID:50]: Event <got process config req>,
State: need-init-keys to need-init-keys
*Jan 17 14:36:24.373: SSS PM [uid:39][B4728100][AAA ID:50]: Handling Process Config
*Jan 17 14:36:24.373: SSS PM [uid:39][B4728100][AAA ID:50]: Apply config request set to AAA list
Config: ip-unnumbered 0 "loopback0"
Config: addr 0 179.1.1.1
*Jan 17 14:36:24.373: SSS PM [uid:39][B4728100][AAA ID:50]: Sending pppoe@local.com request to
AAA
*Jan 17 14:36:24.373: SSS PM [uid:39][B4728100][AAA ID:50]: SSS PM: Allocating per-user profile
info
*Jan 17 14:36:24.373: SSS PM [uid:39][B4728100][AAA ID:50]: SSS PM: Add per-user profile info to

```

policy context

```
*Jan 17 14:36:24.373: SSS AAA AUTHOR [uid:39][AAA ID:50]: Root SIP PPPoE
*Jan 17 14:36:24.373: SSS AAA AUTHOR [uid:39][AAA ID:50]: Enable PPPoE parsing
*Jan 17 14:36:24.373: SSS AAA AUTHOR [uid:39][AAA ID:50]: Enable PPP parsing
*Jan 17 14:36:24.373: SSS PM [uid:39][B4728100][AAA ID:50]: ACTIVE HANDLE[0]: Snapshot captured
in Active context
*Jan 17 14:36:24.373: SSS PM [uid:39][B4728100][AAA ID:50]: ACTIVE HANDLE[0]: Active context
created
*Jan 17 14:36:24.373: SSS AAA AUTHOR [uid:39][AAA ID:50]: Event <make request>, state changed
from idle to authorizing
*Jan 17 14:36:24.373: SSS AAA AUTHOR [uid:39][AAA ID:50]: Active key set to Auth-User
*Jan 17 14:36:24.373: SSS AAA AUTHOR [uid:39][AAA ID:50]: Authorizing key pppoe@local.com
*Jan 17 14:36:24.373: SSS AAA AUTHOR [uid:39][AAA ID:50]: Spoofed AAA reply sent for key
pppoe@local.com
*Jan 17 14:36:24.373: SSS AAA AUTHOR [uid:39][AAA ID:50]: Received an AAA pass
*Jan 17 14:36:24.373: SSS AAA AUTHOR [uid:39][AAA ID:50]: [B4728100]:Reply message not exist
Initial attr ip-unnumbered 0 "loopback0"
Initial attr addr 0 179.1.1.1
*Jan 17 14:36:24.373: SSS PM: PARAMETERIZED-QoS: QOS parameters
*Jan 17 14:36:24.374: SSS PM [uid:39][B4728100][AAA ID:50]: RULE: VRF Parsing routine:
ip-unnumbered 0 "loopback0"
addr 0 179.1.1.1
*Jan 17 14:36:24.374: SSS PM: No VPDN attributes or policy found
*Jan 17 14:36:24.374: SSS PM LTERM [uid:39][AAA ID:50]: Process Attr: ip-unnumbered 0
"loopback0"
*Jan 17 14:36:24.374: SSS AAA AUTHOR [uid:39][AAA ID:50]: Parsed service; Local
*Jan 17 14:36:24.374: SSS AAA AUTHOR [uid:39][AAA ID:50]: SIP PPP[A4700F0] parsed as Success
*Jan 17 14:36:24.374: SSS AAA AUTHOR [uid:39][AAA ID:50]: SIP PPP[B009900] parsed as Ignore
*Jan 17 14:36:24.374: SSS AAA AUTHOR [uid:39][AAA ID:50]: SIP PPPoE[A501AC0] parsed as Success
*Jan 17 14:36:24.374: SSS AAA AUTHOR [uid:39][AAA ID:50]: Event <found service>, state changed
from authorizing to complete
*Jan 17 14:36:24.374: SSS AAA AUTHOR [uid:39][AAA ID:50]: Found service info for key
pppoe@local.com
*Jan 17 14:36:24.374: SSS AAA AUTHOR [uid:39][AAA ID:50]: Active Handle present - AC000006
*Jan 17 14:36:24.374: SSS PM [uid:39][B4728100][AAA ID:50]: Apply config handle [AF0003D3] now
set to [270003DA]
*Jan 17 14:36:24.374: SSS PM [uid:39][B4728100][AAA ID:50]: ACTIVE HANDLE[0]: Snapshot reverted
from Active context to policy context
*Jan 17 14:36:24.374: SSS AAA AUTHOR [uid:39][AAA ID:50]: Freeing Active Handle; SSS Policy
Context Handle = D8000027
*Jan 17 14:36:24.374: SSS PM [uid:39][B4728100][AAA ID:50]: ACTIVE HANDLE[2829]: Released active
handle
*Jan 17 14:36:24.374: SSS AAA AUTHOR [uid:39][AAA ID:50]: PM directive AAA:Local maps to
PM:Local Terminate
*Jan 17 14:36:24.374: SSS PM [uid:39][B4728100][AAA ID:50]: PROFILE: store profile
"pppoe@local.com"
*Jan 17 14:36:24.374: SSS PM: PROFILE-DB: is profile "pppoe@local.com" in DB
*Jan 17 14:36:24.374: SSS PM: PROFILE-DB: Computed hash value = 353387640
*Jan 17 14:36:24.374: SSS PM: PROFILE-DB: No, add new list
*Jan 17 14:36:24.374: SSS PM: PROFILE-DB: create "pppoe@local.com"
*Jan 17 14:36:24.374: SSS PM: PROFILE-DB: create "pppoe@local.com"/B48191BC hdl C80003DC ref
1
*Jan 17 14:36:24.374: SSS PM [uid:39][B4728100][AAA ID:50]: PROFILE: create B481B90C, ref 1
*Jan 17 14:36:24.374: SSS AAA AUTHOR [uid:39][AAA ID:50]: Event <free request>, state changed
from complete to terminal
*Jan 17 14:36:24.374: SSS AAA AUTHOR [uid:39][AAA ID:50]: Cancel request
*Jan 17 14:36:24.374: SSS PM [uid:39][B4728100][AAA ID:50]: Handling Author Found Event
*Jan 17 14:36:24.374: SSS PM [uid:39][B4728100][AAA ID:50]: Plumbing proposed by FSP
*Jan 17 14:36:24.374: SSS PM [uid:39][B4728100][AAA ID:50]: Policy reply - Local Terminate
*Jan 17 14:36:24.374: SSS PM [uid:39][B4728100][AAA ID:50]: FSP info: B45EC130/Local data&colon;
B45EC0E0 SVM: 00000000
*Jan 17 14:36:24.374: SSS PM [uid:39][B4728100][AAA ID:50]: Feature info: B4814320 Type: IP
Config
*Jan 17 14:36:24.374: SSS PM [uid:39][B4728100][AAA ID:50]: : Config level: Per-user
```

*Jan 17 14:36:24.374: SSS PM [uid:39][B4728100][AAA ID:50]: : IDB type: Sub-if or not required

*Jan 17 14:36:24.374: SSS PM [uid:39][B4728100][AAA ID:50]: Apply of config finished; provide the found network service

*Jan 17 14:36:24.374: SSS PM [uid:39][B4728100][AAA ID:50]: Network service found; continuing rule

*Jan 17 14:36:24.374: SSS PM [uid:39][B4728100][AAA ID:50]: RULE[0]: Continue

*Jan 17 14:36:24.374: SSS PM [uid:39][B4728100][AAA ID:50]: RULE[0]: DOMAIN/PPP-4-LOCAL event session-start/20 authenticate aaa list AAA-4-LOCAL

*Jan 17 14:36:24.374: SSS PM [uid:39][B4728100][AAA ID:50]: RULE[0]: Run action with no altered name

*Jan 17 14:36:24.374: SSS PM [uid:39][B4728100][AAA ID:50]: State: need-init-keys to initial-req

*Jan 17 14:36:24.374: SSS PM [uid:39][B4728100][AAA ID:50]: RULE[0]: Have key Auth-User

*Jan 17 14:36:24.374: SSS PM [uid:39][B4728100][AAA ID:50]: RULE[1]: Continue

*Jan 17 14:36:24.374: SSS PM [uid:39][B4728100][AAA ID:50]: RULE[1]: DOMAIN/PPP-4-LOCAL event session-start/20 authenticate aaa list AAA-4-LOCAL

*Jan 17 14:36:24.374: SSS PM [uid:39][B4728100][AAA ID:50]: RULE[1]: Back to parent rule

*Jan 17 14:36:24.374: SSS PM [uid:39][B4728100][AAA ID:50]: RULE[1]: Run next parent action

*Jan 17 14:36:24.374: SSS PM [uid:39][B4728100][AAA ID:50]: RULE[2]: Continue

*Jan 17 14:36:24.374: SSS PM [uid:39][B4728100][AAA ID:50]: RULE[2]: PPPOE/PPP event session-start/12 service-policy type control DOMAIN

*Jan 17 14:36:24.374: SSS PM [uid:39][B4728100][AAA ID:50]: Client block is NULL in get client block with handle D8000027

*Jan 17 14:36:24.374: SSS PM [uid:39][B4728100][AAA ID:50]: RULE[2]: No more actions to run

*Jan 17 14:36:24.374: SSS PM [uid:39][B4728100][AAA ID:50]: RULE[3]: Continue

*Jan 17 14:36:24.374: SSS PM [uid:39][B4728100][AAA ID:50]: RULE[3]: PPPOE/PPP event session-start/12 service-policy type control DOMAIN

*Jan 17 14:36:24.374: SSS PM [uid:39][B4728100][AAA ID:50]: RULE[3]: Using previously offered directive Local Terminate

*Jan 17 14:36:24.374: SSS PM [uid:39][B4728100][AAA ID:50]: RULE[4]: Continue

*Jan 17 14:36:24.374: SSS PM [uid:39][B4728100][AAA ID:50]: RULE[4]: PPPOE/PPP event session-start/12 service-policy type control DOMAIN

*Jan 17 14:36:24.374: SSS PM [uid:39][B4728100][AAA ID:50]: Client block is NULL in get client block with handle D8000027

*Jan 17 14:36:24.374: SSS PM [uid:39][B4728100][AAA ID:50]: Event <srvf found>, State: initial-req to wait-for-events

*Jan 17 14:36:24.374: SSS PM [uid:39][B4728100][AAA ID:50]: Handling Service Direction

*Jan 17 14:36:24.374: SSS PM [uid:39][B4728100][AAA ID:50]: Policy reply - Local Terminate

*Jan 17 14:36:24.374: SSS PM [uid:39][B4728100][AAA ID:50]: Plumbing proposed by FSP

*Jan 17 14:36:24.374: SSS PM [uid:39][B4728100][AAA ID:50]: Policy reply - Local Terminate

*Jan 17 14:36:24.374: SSS PM [uid:39][B4728100][AAA ID:50]: RULE: Looking for a rule for event session-service-found

*Jan 17 14:36:24.374: SSS PM [uid:39][B4728100][AAA ID:50]: RULE: Intf CloneSrc Vt2: service-rule any: PPPOE

*Jan 17 14:36:24.374: SSS PM [uid:39][B4728100][AAA ID:50]: RULE: Evaluate "PPPOE" for session-service-found

*Jan 17 14:36:24.374: SSS PM [uid:39][B4728100][AAA ID:50]: RULE: Not matched "PPPOE/PPP event session-start"

*Jan 17 14:36:24.374: SSS PM [uid:39][B4728100][AAA ID:50]: RULE: No match for "PPPOE"

*Jan 17 14:36:24.375: SSS PM [uid:39][B4728100][AAA ID:50]: RULE: Intf InputI/f Et0/1.101: service-rule any: None

*Jan 17 14:36:24.375: SSS PM [uid:39][B4728100][AAA ID:50]: RULE: Glob: service-rule any: None

*Jan 17 14:36:24.377: SSS PM [uid:39][B4728100][AAA ID:50]: SM Policy invoke - Apply Config Success

*Jan 17 14:36:24.377: SSS PM [uid:39][B4728100][AAA ID:50]: [PARAMETERIZED-QoS]: No rabapol context created yet for handle [D8000027], returning compatible

*Jan 17 14:36:24.377: SSS PM [uid:39][B4728100][AAA ID:50]: Event <got apply config success>, State: wait-for-events to wait-for-events

*Jan 17 14:36:24.377: SSS PM [uid:39][B4728100][AAA ID:50]: Handling Apply Config; SUCCESS

*Jan 17 14:36:24.377: SSS PM [uid:39][B4728100][AAA ID:50]: session start done

*Jan 17 14:36:24.377: SSS PM [uid:39][B4728100][AAA ID:50]: Removed attribute list just processed

*Jan 17 14:36:24.377: SSS PM [uid:39][B4728100][AAA ID:50]: no callback for callback north

*Jan 17 14:36:24.377: SSS PM [uid:39][B4728100][AAA ID:50]: Client block is NULL in get client

```
block with handle D8000027
*Jan 17 14:36:24.377: SSS PM [uid:39][B4728100][AAA ID:50]: Null client block; Can't update RP
*Jan 17 14:36:24.377: SSS PM [uid:39][B4728100][AAA ID:50]: Client block is NULL in get client
block with handle D8000027
*Jan 17 14:36:24.377: SSS PM [uid:39][B4728100][AAA ID:50]: No pending events to process
*Jan 17 14:36:24.377: SSS PM [uid:39][B4728100][AAA ID:50]: No pending eventstst
*Jan 17 14:36:24.377: AAA/BIND(00000032): Bind i/f Virtual-Access2.1
*Jan 17 14:36:24.377: Vi2.1 PPP: Phase is AUTHENTICATING, Authenticated User
*Jan 17 14:36:24.377: Vi2.1 PAP: O AUTH-ACK id 1 len 5
*Jan 17 14:36:24.378: Vi2.1 PPP: No AAA accounting method list
*Jan 17 14:36:24.378: Vi2.1 PPP: Phase is UP
*Jan 17 14:36:24.378: Vi2.1 IPCP: Protocol configured, start CP. state[Initial]
*Jan 17 14:36:24.378: Vi2.1 IPCP: Event[OPEN] State[Initial to Starting]
*Jan 17 14:36:24.378: Vi2.1 IPCP: O CONFREQ [Starting] id 1 len 10
*Jan 17 14:36:24.378: Vi2.1 IPCP: Address 172.19.1.2 (0x0306AC130102)
*Jan 17 14:36:24.378: Vi2.1 IPCP: Event[UP] State[Starting to REQsent]
*Jan 17 14:36:24.379: Vi2.1 IPCP: I CONFREQ [REQsent] id 1 len 10
*Jan 17 14:36:24.379: Vi2.1 IPCP: Address 0.0.0.0 (0x030600000000)
*Jan 17 14:36:24.379: Vi2.1 IPCP AUTHOR: Start. Her address 0.0.0.0, we want 0.0.0.0
*Jan 17 14:36:24.379: Vi2.1 IPCP AUTHOR: Done. Her address 0.0.0.0, we want 179.1.1.1
*Jan 17 14:36:24.379: Vi2.1 IPCP: O CONFNAK [REQsent] id 1 len 10
*Jan 17 14:36:24.379: Vi2.1 IPCP: Address 179.1.1.1 (0x0306B3010101)
*Jan 17 14:36:24.379: Vi2.1 IPCP: Event[Receive ConfReq-] State[REQsent to REQsent]
*Jan 17 14:36:24.379: Vi2.1 CDPCP: I CONFREQ [UNKNOWN] id 1 len 4
*Jan 17 14:36:24.379: Vi2.1 LCP: O PROTREJ [Open] id 3 len 10 protocol CDPCP (0x01010004)
*Jan 17 14:36:24.379: Vi2.1 IPCP: I CONFACK [REQsent] id 1 len 10
*Jan 17 14:36:24.379: Vi2.1 IPCP: Address 172.19.1.2 (0x0306AC130102)
*Jan 17 14:36:24.379: Vi2.1 IPCP: Event[Receive ConfAck] State[REQsent to ACKrcvd]
*Jan 17 14:36:24.380: Vi2.1 IPCP: I CONFREQ [ACKrcvd] id 2 len 10
*Jan 17 14:36:24.380: Vi2.1 IPCP: Address 179.1.1.1 (0x0306B3010101)
*Jan 17 14:36:24.380: Vi2.1 IPCP: O CONFACK [ACKrcvd] id 2 len 10
*Jan 17 14:36:24.380: Vi2.1 IPCP: Address 179.1.1.1 (0x0306B3010101)
*Jan 17 14:36:24.380: Vi2.1 IPCP: Event[Receive ConfReq+] State[ACKrcvd to Open]
*Jan 17 14:36:24.401: Vi2.1 IPCP: State is Open
*Jan 17 14:36:24.401: Vi2.1 Added to neighbor route AVL tree: topoid 0, address 179.1.1.1
*Jan 17 14:36:24.401: Vi2.1 IPCP: Install route to 179.1.1.1
```

此debug输出反射根据域名的远程用户Ins.com如何验证并且转发对LNS设备。

```
*Jan 17 14:37:17.353: SSS PM [uid:40][B4728388][AAA ID:51]: Authen status update; is now
"unauthen"
*Jan 17 14:37:17.353: SSS PM [uid:40][B4728388][AAA ID:51]: IDMGR: assert authen status
"unauthen"
*Jan 17 14:37:17.353: SSS PM [uid:40][B4728388][AAA ID:51]: IDMGR: send event Session Update
*Jan 17 14:37:17.353: SSS PM [uid:40][B4728388][AAA ID:51]: Username key not found in set domain
key API
*Jan 17 14:37:17.353: SSS PM [uid:40][B4728388][AAA ID:51]: Username key not found in set domain
key API
*Jan 17 14:37:17.353: SSS PM [uid:40][B4728388][AAA ID:51]: Updated NAS port for AAA ID 51
*Jan 17 14:37:17.353: SSS PM [uid:40][B4728388][AAA ID:51]: IDMGR: send event Session Update
*Jan 17 14:37:17.354: SSS PM [uid:40][B4728388][AAA ID:51]: Client block is NULL in get client
block with handle 1D000028
*Jan 17 14:37:17.354: SSS PM [uid:40][B4728388][AAA ID:51]: Updated key list:
*Jan 17 14:37:17.354: SSS PM [uid:40][B4728388][AAA ID:51]: Input Interface =
"Ethernet0/1.102"
*Jan 17 14:37:17.354: SSS PM [uid:40][B4728388][AAA ID:51]: Access-Type = 3 (PPPoE)
*Jan 17 14:37:17.354: SSS PM [uid:40][B4728388][AAA ID:51]: Protocol-Type = 0 (PPP Access
Protocol)
*Jan 17 14:37:17.354: SSS PM [uid:40][B4728388][AAA ID:51]: Media-Type = 1 (Ethernet)
*Jan 17 14:37:17.354: SSS PM [uid:40][B4728388][AAA ID:51]: Authen-Status = 1
(Unauthenticated)
*Jan 17 14:37:17.354: SSS PM [uid:40][B4728388][AAA ID:51]: Nasport = PPPoEoVLAN: slot 0
adapter 0 port 1 sub-interface 102 IP 0.0.0.0 VPI 0 VCI 0 VLAN 102
*Jan 17 14:37:17.354: SSS PM [uid:40][B4728388][AAA ID:51]: Username key not found in set domain
```

key API

*Jan 17 14:37:17.354: SSS PM [uid:40][B4728388][AAA ID:51]: Username key not found in set domain

key API

*Jan 17 14:37:17.354: SSS PM [uid:40][B4728388][AAA ID:51]: Client block is NULL in get client block with handle 1D000028

*Jan 17 14:37:17.354: SSS PM [uid:40][B4728388][AAA ID:51]: Updated key list:

*Jan 17 14:37:17.354: SSS PM [uid:40][B4728388][AAA ID:51]: Input Interface = "Ethernet0/1.102"

*Jan 17 14:37:17.354: SSS PM [uid:40][B4728388][AAA ID:51]: Access-Type = 3 (PPPoE)

*Jan 17 14:37:17.354: SSS PM [uid:40][B4728388][AAA ID:51]: Protocol-Type = 0 (PPP Access Protocol)

*Jan 17 14:37:17.354: SSS PM [uid:40][B4728388][AAA ID:51]: Media-Type = 1 (Ethernet)

*Jan 17 14:37:17.354: SSS PM [uid:40][B4728388][AAA ID:51]: Authen-Status = 1 (Unauthenticated)

*Jan 17 14:37:17.354: SSS PM [uid:40][B4728388][AAA ID:51]: Nasport = PPPoEoVLAN: slot 0 adapter 0 port 1 sub-interface 102 IP 0.0.0.0 VPI 0 VCI 0 VLAN 102

*Jan 17 14:37:17.354: SSS PM [uid:40][B4728388][AAA ID:51]: Session-Handle = 385876049 (17000051)

*Jan 17 14:37:17.354: SSS PM [uid:40][B4728388][AAA ID:51]: SM Policy invoke - Service Selection Request

*Jan 17 14:37:17.354: SSS PM [uid:40][B4728388][AAA ID:51]: Access type PPPoE

*Jan 17 14:37:17.354: SSS PM [uid:40][B4728388][AAA ID:51]: Successfully added key SUBTYPE_CONVERTED as FALSE

*Jan 17 14:37:17.354: SSS PM [uid:40][B4728388][AAA ID:51]: RULE: Looking for a rule for event session-start

*Jan 17 14:37:17.354: SSS PM [uid:40][B4728388][AAA ID:51]: RULE: Intf CloneSrc Vt2: service-rule any: PPPOE

*Jan 17 14:37:17.354: SSS PM [uid:40][B4728388][AAA ID:51]: RULE: Evaluate "PPPOE" for session-start

*Jan 17 14:37:17.354: SSS PM [uid:40][B4728388][AAA ID:51]: RULE: Match keys against "PPPOE":

*Jan 17 14:37:17.354: SSS PM [uid:40][B4728388][AAA ID:51]: RULE: Input Interface = "Ethernet0/1.102"

*Jan 17 14:37:17.354: SSS PM [uid:40][B4728388][AAA ID:51]: RULE: Converted-Session = 0 (NO)

*Jan 17 14:37:17.354: SSS PM [uid:40][B4728388][AAA ID:51]: RULE: Protocol-Type = 0 (PPP Access Protocol)

*Jan 17 14:37:17.354: SSS PM [uid:40][B4728388][AAA ID:51]: RULE: Media-Type = 1 (Ethernet)

*Jan 17 14:37:17.354: SSS PM [uid:40][B4728388][AAA ID:51]: RULE: Authen-Status = 1 (Unauthenticated)

*Jan 17 14:37:17.354: SSS PM [uid:40][B4728388][AAA ID:51]: RULE: Nasport = PPPoEoVLAN: slot 0 adapter 0 port 1 sub-interface 102 IP 0.0.0.0 VPI 0 VCI 0 VLAN 102

*Jan 17 14:37:17.354: SSS PM [uid:40][B4728388][AAA ID:51]: RULE: Session-Handle = 385876049 (17000051)

*Jan 17 14:37:17.354: SSS PM [uid:40][B4728388][AAA ID:51]: CONTROL-CLASS-MAP: : [0] match-all PPP

*Jan 17 14:37:17.354: SSS PM [uid:40][B4728388][AAA ID:51]: CONTROL-CLASS-MAP: : [0] match identifier protocol ppp [TRUE]

*Jan 17 14:37:17.354: SSS PM [uid:40][B4728388][AAA ID:51]: CONTROL-CLASS-MAP: : [0] match-all PPP

*Jan 17 14:37:17.354: SSS PM [uid:40][B4728388][AAA ID:51]: CONTROL-CLASS-MAP: : PPP [TRUE]

*Jan 17 14:37:17.354: SSS PM [uid:40][B4728388][AAA ID:51]: RULE: Matched "PPPOE/PPP event session-start"

*Jan 17 14:37:17.354: SSS PM [uid:40][B4728388][AAA ID:51]: RULE: Matched "PPPOE/PPP event session-start/11 collect identifier unauthenticated-domain "

*Jan 17 14:37:17.354: SSS PM [uid:40][B4728388][AAA ID:51]: RULE[0]: Start

*Jan 17 14:37:17.354: SSS PM [uid:40][B4728388][AAA ID:51]: RULE[0]: PPPOE/PPP event session-start/11 collect identifier unauthenticated-domain

*Jan 17 14:37:17.354: SSS PM [uid:40][B4728388][AAA ID:51]: SIP [PPPoE] can provide more keys

*Jan 17 14:37:17.354: SSS PM [uid:40][B4728388][AAA ID:51]: RULE[0]: Need key Unauth-Domain

*Jan 17 14:37:17.354: SSS PM [uid:40][B4728388][AAA ID:51]: RULE[1]: Start

*Jan 17 14:37:17.354: SSS PM [uid:40][B4728388][AAA ID:51]: RULE[1]: PPPOE/PPP event session-start/11 collect identifier unauthenticated-domain

*Jan 17 14:37:17.354: SSS PM [uid:40][B4728388][AAA ID:51]: Event <need keys>, State: initial-req to need-init-keys

*Jan 17 14:37:17.354: SSS PM [uid:40][B4728388][AAA ID:51]: Policy reply - Need More Keys

*Jan 17 14:37:17.354: SSS PM [uid:40][B4728388][AAA ID:51]: IDMGR: Need: Unauth-Domain
*Jan 17 14:37:17.354: SSS PM [uid:40][B4728388][AAA ID:51]: Asking client for more keys
*Jan 17 14:37:17.354: SSS PM [uid:40][B4728388][AAA ID:51]: Policy reply - Need More Keys
*Jan 17 14:37:17.355: PPP: Alloc Context [B174D034]
*Jan 17 14:37:17.355: ppp40 PPP: Phase is ESTABLISHING
*Jan 17 14:37:17.355: SSS PM: ANCP not enabled on 'Ethernet0/1.102' - not retrieving default shaper value
*Jan 17 14:37:17.355: ppp40 PPP: Using vpn set call direction
*Jan 17 14:37:17.355: ppp40 PPP: Treating connection as a callin
*Jan 17 14:37:17.355: ppp40 PPP: Session handle[8E000028] Session id[40]
*Jan 17 14:37:17.355: ppp40 LCP: Event[OPEN] State[Initial to Starting]
*Jan 17 14:37:17.355: ppp40 PPP LCP: Enter passive mode, state[Stopped]
*Jan 17 14:37:17.357: ppp40 LCP: I CONFREQ [Stopped] id 1 len 10
*Jan 17 14:37:17.357: ppp40 LCP: MagicNumber 0xBCDA70F0 (0x0506BCDA70F0)
*Jan 17 14:37:17.357: ppp40 LCP: O CONFREQ [Stopped] id 1 len 18
*Jan 17 14:37:17.357: ppp40 LCP: MRU 1492 (0x010405D4)
*Jan 17 14:37:17.357: ppp40 LCP: AuthProto PAP (0x0304C023)
*Jan 17 14:37:17.357: ppp40 LCP: MagicNumber 0x010E7131 (0x0506010E7131)
*Jan 17 14:37:17.357: ppp40 LCP: O CONFACK [Stopped] id 1 len 10
*Jan 17 14:37:17.357: ppp40 LCP: MagicNumber 0xBCDA70F0 (0x0506BCDA70F0)
*Jan 17 14:37:17.357: ppp40 LCP: Event[Receive ConfReq+] State[Stopped to ACKsent]
*Jan 17 14:37:17.357: ppp40 LCP: I CONFNAK [ACKsent] id 1 len 8
*Jan 17 14:37:17.357: ppp40 LCP: MRU 1500 (0x010405DC)
*Jan 17 14:37:17.357: ppp40 LCP: O CONFREQ [ACKsent] id 2 len 18
*Jan 17 14:37:17.357: ppp40 LCP: MRU 1500 (0x010405DC)
*Jan 17 14:37:17.357: ppp40 LCP: AuthProto PAP (0x0304C023)
*Jan 17 14:37:17.357: ppp40 LCP: MagicNumber 0x010E7131 (0x0506010E7131)
*Jan 17 14:37:17.357: ppp40 LCP: Event[Receive ConfNak/Rej] State[ACKsent to ACKsent]
*Jan 17 14:37:17.357: ppp40 LCP: I CONFACK [ACKsent] id 2 len 18
*Jan 17 14:37:17.357: ppp40 LCP: MRU 1500 (0x010405DC)
*Jan 17 14:37:17.357: ppp40 LCP: AuthProto PAP (0x0304C023)
*Jan 17 14:37:17.357: ppp40 LCP: MagicNumber 0x010E7131 (0x0506010E7131)
*Jan 17 14:37:17.357: ppp40 LCP: Event[Receive ConfAck] State[ACKsent to Open]
*Jan 17 14:37:17.361: ppp40 PPP: Phase is AUTHENTICATING, by this end
*Jan 17 14:37:17.361: ppp40 LCP: State is Open
***Jan 17 14:37:17.388: ppp40 PAP: I AUTH-REQ id 1 len 24 from "pppoe@lns.com"**
***Jan 17 14:37:17.388: ppp40 PAP: Authenticating peer pppoe@lns.com**
*Jan 17 14:37:17.388: ppp40 PPP: Phase is FORWARDING, Attempting Forward
*Jan 17 14:37:17.388: SSS PM [uid:40][B4728388][AAA ID:51]: Username key not found in set domain key API
*Jan 17 14:37:17.388: SSS PM [uid:40][B4728388][AAA ID:51]: Client block is NULL in get client block with handle 1D000028
*Jan 17 14:37:17.388: SSS PM [uid:40][B4728388][AAA ID:51]: Updated key list:
*Jan 17 14:37:17.388: SSS PM [uid:40][B4728388][AAA ID:51]: Access-Type = 0 (PPP)
*Jan 17 14:37:17.388: SSS PM [uid:40][B4728388][AAA ID:51]: Input Interface = "Ethernet0/1.102"
*Jan 17 14:37:17.388: SSS PM [uid:40][B4728388][AAA ID:51]: Converted-Session = 0 (NO)
*Jan 17 14:37:17.388: SSS PM [uid:40][B4728388][AAA ID:51]: Media-Type = 1 (Ethernet)
*Jan 17 14:37:17.388: SSS PM [uid:40][B4728388][AAA ID:51]: Authen-Status = 1 (Unauthenticated)
*Jan 17 14:37:17.388: SSS PM [uid:40][B4728388][AAA ID:51]: Nasport = PPPoEoVLAN: slot 0 adapter 0 port 1 sub-interface 102 IP 0.0.0.0 VPI 0 VCI 0 VLAN 102
*Jan 17 14:37:17.388: SSS PM [uid:40][B4728388][AAA ID:51]: Session-Handle = 385876049 (17000051)
*Jan 17 14:37:17.388: SSS PM [uid:40][B4728388][AAA ID:51]: Protocol-Type = 0 (PPP Access Protocol)
*Jan 17 14:37:17.388: SSS PM [uid:40][B4728388][AAA ID:51]: Unauth-User = "pppoe@lns.com"
*Jan 17 14:37:17.388: SSS PM [uid:40][B4728388][AAA ID:51]: Unauth-Domain = "lns.com"
*Jan 17 14:37:17.388: SSS PM [uid:40][B4728388][AAA ID:51]: SM Policy invoke - Got More Keys
*Jan 17 14:37:17.388: SSS PM [uid:40][B4728388][AAA ID:51]: Access type PPP
*Jan 17 14:37:17.388: SSS PM [uid:40][B4728388][AAA ID:51]: RULE[0]: Start
*Jan 17 14:37:17.388: SSS PM [uid:40][B4728388][AAA ID:51]: RULE[0]: PPPOE/PPP event session-start/11 collect identifier unauthenticated-domain
*Jan 17 14:37:17.388: SSS PM [uid:40][B4728388][AAA ID:51]: State: need-init-keys to initial-req

*Jan 17 14:37:17.389: SSS PM [uid:40][B4728388][AAA ID:51]: RULE[0]: Have key Unauth-Domain
*Jan 17 14:37:17.389: SSS PM [uid:40][B4728388][AAA ID:51]: RULE[1]: Start
*Jan 17 14:37:17.389: SSS PM [uid:40][B4728388][AAA ID:51]: RULE[1]: PPPOE/PPP event session-
start/11 collect identifier unauthenticated-domain
*Jan 17 14:37:17.389: SSS PM [uid:40][B4728388][AAA ID:51]: RULE[2]: Start
*Jan 17 14:37:17.389: SSS PM [uid:40][B4728388][AAA ID:51]: RULE[2]: PPPOE/PPP event session-
start/12 service-policy type control DOMAIN
*Jan 17 14:37:17.389: SSS PM [uid:40][B4728388][AAA ID:51]: RULE: Match keys against
"DOMAIN":
*Jan 17 14:37:17.389: SSS PM [uid:40][B4728388][AAA ID:51]: RULE: Input Interface =
"Ethernet0/1.102"
*Jan 17 14:37:17.389: SSS PM [uid:40][B4728388][AAA ID:51]: RULE: Converted-Session = 0 (NO)
*Jan 17 14:37:17.389: SSS PM [uid:40][B4728388][AAA ID:51]: RULE: Media-Type = 1 (Ethernet)
*Jan 17 14:37:17.389: SSS PM [uid:40][B4728388][AAA ID:51]: RULE: Authen-Status = 1
(Unauthenticated)
*Jan 17 14:37:17.389: SSS PM [uid:40][B4728388][AAA ID:51]: RULE: Nasport = PPPoEoVLAN: slot
0 adapter 0 port 1 sub-interface 102 IP 0.0.0.0 VPI 0 VCI 0 VLAN 102
*Jan 17 14:37:17.389: SSS PM [uid:40][B4728388][AAA ID:51]: RULE: Session-Handle = 385876049
(17000051)
*Jan 17 14:37:17.389: SSS PM [uid:40][B4728388][AAA ID:51]: RULE: Protocol-Type = 0 (PPP
Access Protocol)
*Jan 17 14:37:17.389: SSS PM [uid:40][B4728388][AAA ID:51]: RULE: Unauth-User =
"pppoe@lns.com"
*Jan 17 14:37:17.389: SSS PM [uid:40][B4728388][AAA ID:51]: RULE: Unauth-Domain = "lns.com"
*Jan 17 14:37:17.389: SSS PM [uid:40][B4728388][AAA ID:51]: CONTROL-CLASS-MAP: : [0] match-all
PPP-4-LOCAL
*Jan 17 14:37:17.389: SSS PM [uid:40][B4728388][AAA ID:51]: CONTROL-CLASS-MAP: : [0] match
identifier unauthenticated-domain local.com [FALSE] [DONE]
*Jan 17 14:37:17.389: SSS PM [uid:40][B4728388][AAA ID:51]: CONTROL-CLASS-MAP: : [0] match-all
PPP-4-LOCAL
*Jan 17 14:37:17.389: SSS PM [uid:40][B4728388][AAA ID:51]: CONTROL-CLASS-MAP: : PPP-4-LOCAL
[FALSE]
*Jan 17 14:37:17.389: SSS PM [uid:40][B4728388][AAA ID:51]: RULE: No match "DOMAIN/PPP-4-
LOCAL event session-start"
*Jan 17 14:37:17.389: SSS PM [uid:40][B4728388][AAA ID:51]: CONTROL-CLASS-MAP: : [0] match-all
PPP-4-FORWARD
*Jan 17 14:37:17.389: SSS PM [uid:40][B4728388][AAA ID:51]: CONTROL-CLASS-MAP: : [0] match
identifier unauthenticated-domain lns.com [TRUE]
*Jan 17 14:37:17.389: SSS PM [uid:40][B4728388][AAA ID:51]: CONTROL-CLASS-MAP: : [0] match
identifier protocol ppp [TRUE]
*Jan 17 14:37:17.389: SSS PM [uid:40][B4728388][AAA ID:51]: CONTROL-CLASS-MAP: : [0] match-all
PPP-4-FORWARD
*Jan 17 14:37:17.389: SSS PM [uid:40][B4728388][AAA ID:51]: CONTROL-CLASS-MAP: : PPP-4-FORWARD
[TRUE]
*Jan 17 14:37:17.389: SSS PM [uid:40][B4728388][AAA ID:51]: RULE: Matched "DOMAIN/PPP-4-
FORWARD event session-start"
*Jan 17 14:37:17.389: SSS PM [uid:40][B4728388][AAA ID:51]: RULE[3]: Start
*Jan 17 14:37:17.389: SSS PM [uid:40][B4728388][AAA ID:51]: RULE[3]: DOMAIN/PPP-4-FORWARD event
session-start/20 authenticate aaa list AAA-4-FORWARD
*Jan 17 14:37:17.389: SSS PM [uid:40][B4728388][AAA ID:51]: SIP [PPP] can provide more keys
*Jan 17 14:37:17.389: SSS PM [uid:40][B4728388][AAA ID:51]: RULE[3]: Using AAA-Authen-Method-
List AAA-4-FORWARD
*Jan 17 14:37:17.389: SSS PM [uid:40][B4728388][AAA ID:51]: RULE[3]: Need key Auth-User
*Jan 17 14:37:17.389: SSS PM [uid:40][B4728388][AAA ID:51]: RULE[4]: Start
*Jan 17 14:37:17.389: SSS PM [uid:40][B4728388][AAA ID:51]: RULE[4]: DOMAIN/PPP-4-FORWARD event
session-start/20 authenticate aaa list AAA-4-FORWARD
*Jan 17 14:37:17.389: SSS PM [uid:40][B4728388][AAA ID:51]: Event <need keys>, State: initial-
req to need-init-keys
*Jan 17 14:37:17.389: SSS PM [uid:40][B4728388][AAA ID:51]: Policy reply - Need More Keys
*Jan 17 14:37:17.389: SSS PM [uid:40][B4728388][AAA ID:51]: IDMGR: Need: Auth-User
*Jan 17 14:37:17.389: SSS PM [uid:40][B4728388][AAA ID:51]: IDMGR: ask for authen status
*Jan 17 14:37:17.389: SSS PM [uid:40][B4728388][AAA ID:51]: IDMGR: request, Query Session
Authenticated Status
*Jan 17 14:37:17.389: SSS PM [uid:40][B4728388][AAA ID:51]: IDMGR: reply, Query Session

Authenticated Status = no-record-found

```
*Jan 17 14:37:17.389: SSS PM [uid:40][B4728388][AAA ID:51]: IDMGR: session NOT authenticated
*Jan 17 14:37:17.389: SSS PM [uid:40][B4728388][AAA ID:51]: Event <idmgr didn't get keys>,
State: need-init-keys to need-init-keys
*Jan 17 14:37:17.389: SSS PM [uid:40][B4728388][AAA ID:51]: Asking client for more keys
*Jan 17 14:37:17.389: SSS PM [uid:40][B4728388][AAA ID:51]: Policy reply - Need More Keys
*Jan 17 14:37:17.389: ppp40 PPP: Phase is AUTHENTICATING, Unauthenticated User
*Jan 17 14:37:17.389: AAA/AUTHEN/PPP (00000033): Pick method list 'AAA-4-FORWARD' <== correct
method
*Jan 17 14:37:17.389: RADIUS/ENCODE(00000033):Orig. component type = PPPoE
*Jan 17 14:37:17.389: RADIUS: DSL line rate attributes successfully added
*Jan 17 14:37:17.390: RADIUS(00000033): Config NAS IP: 172.17.21.6
*Jan 17 14:37:17.390: RADIUS(00000033): Config NAS IPv6: ::
*Jan 17 14:37:17.390: RADIUS/ENCODE(00000033): acct_session_id: 41
*Jan 17 14:37:17.390: RADIUS(00000033): sending
*Jan 17 14:37:17.390: RADIUS(00000033): Send Access-Request to 172.16.21.5:11645 id 1645/51, len
135
*Jan 17 14:37:17.390: RADIUS: authenticator 76 AF BF 7B 54 7B 38 A7 - 2A BB EF 93 CB BA 0A 45
*Jan 17 14:37:17.390: RADIUS: Framed-Protocol [7] 6 PPP [1]
*Jan 17 14:37:17.390: RADIUS: User-Name [1] 15 "pppoe@lns.com"
*Jan 17 14:37:17.390: RADIUS: User-Password [2] 18 *
*Jan 17 14:37:17.390: RADIUS: NAS-Port-Type [61] 6 Virtual [5]
*Jan 17 14:37:17.390: RADIUS: NAS-Port [5] 6 0
*Jan 17 14:37:17.390: RADIUS: NAS-Port-Id [87] 11 "0/0/1/102"
*Jan 17 14:37:17.390: RADIUS: Vendor, Cisco [26] 41
*Jan 17 14:37:17.390: RADIUS: Cisco AVpair [1] 35 "client-mac-address=aabb.cc00.d210"
*Jan 17 14:37:17.390: RADIUS: Service-Type [6] 6 Framed [2]
*Jan 17 14:37:17.390: RADIUS: NAS-IP-Address [4] 6 172.17.21.6 <=== Correct NAS
(source ip)
*Jan 17 14:37:17.390: RADIUS(00000033): Sending a IPv4 Radius Packet
*Jan 17 14:37:17.390: RADIUS(00000033): Started 5 sec timeout
*Jan 17 14:37:17.391: RADIUS: Received from id 1645/51 172.16.21.5:11645, Access-Accept, len 105
*Jan 17 14:37:17.391: RADIUS: authenticator 3C 38 A2 16 EA 26 BE 4A - FD 69 49 CA E5 69 E7 04
*Jan 17 14:37:17.391: RADIUS: Service-Type [6] 6 Outbound [5]
*Jan 17 14:37:17.391: RADIUS: Tunnel-Type [64] 6 00:L2TP [3]
*Jan 17 14:37:17.391: RADIUS: Framed-Protocol [7] 6 PPP [1]
*Jan 17 14:37:17.391: RADIUS: Tunnel-Medium-Type [65] 6 00:IPv4 [1]
*Jan 17 14:37:17.391: RADIUS: Tunnel-Client-Auth-I[90] 16 "lac-via-radius"
*Jan 17 14:37:17.391: RADIUS: Tunnel-Password [69] 21 00:*
*Jan 17 14:37:17.391: RADIUS: Tunnel-Server-Endpoi[67] 12 "172.19.1.1"
*Jan 17 14:37:17.391: RADIUS: Tunnel-Client-Endpoi[66] 12 "172.19.1.2"
*Jan 17 14:37:17.391: RADIUS(00000033): Received from id 1645/51
*Jan 17 14:37:17.391: ppp40 PPP: Phase is FORWARDING, Attempting Forward
*Jan 17 14:37:17.391: SSS PM [uid:40][B4728388][AAA ID:51]: Authen status update; is now
"authen"
*Jan 17 14:37:17.391: SSS PM [uid:40][B4728388][AAA ID:51]: IDMGR: assert authen status "authen"
*Jan 17 14:37:17.391: SSS PM [uid:40][B4728388][AAA ID:51]: IDMGR: send event Session Update
*Jan 17 14:37:17.391: SSS PM [uid:40][B4728388][AAA ID:51]: IDMGR: with username
"pppoe@lns.com"
*Jan 17 14:37:17.391: SSS PM [uid:40][B4728388][AAA ID:51]: Session activation: ok
*Jan 17 14:37:17.391: SSS PM [uid:40][B4728388][AAA ID:51]: Client block is NULL in get client
block with handle 1D000028
*Jan 17 14:37:17.391: SSS PM [uid:40][B4728388][AAA ID:51]: Updated key list:
*Jan 17 14:37:17.392: SSS PM [uid:40][B4728388][AAA ID:51]: AAA-Attr-List = F50003F4
*Jan 17 14:37:17.392: SSS PM [uid:40][B4728388][AAA ID:51]: service-type 0 5
[Outbound]
*Jan 17 14:37:17.392: SSS PM [uid:40][B4728388][AAA ID:51]: tunnel-type 0 3
[l2tp]
*Jan 17 14:37:17.392: SSS PM [uid:40][B4728388][AAA ID:51]: Framed-Protocol 0 1 [PPP]
*Jan 17 14:37:17.392: SSS PM [uid:40][B4728388][AAA ID:51]: tunnel-medium-type 0 1
[IPv4]
*Jan 17 14:37:17.392: SSS PM [uid:40][B4728388][AAA ID:51]: tunnel-id 0 "lac-
via-radius"
*Jan 17 14:37:17.392: SSS PM [uid:40][B4728388][AAA ID:51]: tunnel-password 0
```

<hidden>

```
*Jan 17 14:37:17.392: SSS PM [uid:40][B4728388][AAA ID:51]: tunnel-server-endpoi 0
"172.19.1.1"
*Jan 17 14:37:17.392: SSS PM [uid:40][B4728388][AAA ID:51]: tunnel-client-endpoi 0
"172.19.1.2"
*Jan 17 14:37:17.392: SSS PM [uid:40][B4728388][AAA ID:51]: Access-Type = 0 (PPP)
*Jan 17 14:37:17.392: SSS PM [uid:40][B4728388][AAA ID:51]: Unauth-User = "pppoe@lns.com"
*Jan 17 14:37:17.392: SSS PM [uid:40][B4728388][AAA ID:51]: Unauth-Domain = "lns.com"
*Jan 17 14:37:17.392: SSS PM [uid:40][B4728388][AAA ID:51]: Input Interface =
"Ethernet0/1.102"
*Jan 17 14:37:17.392: SSS PM [uid:40][B4728388][AAA ID:51]: Converted-Session = 0 (NO)
*Jan 17 14:37:17.392: SSS PM [uid:40][B4728388][AAA ID:51]: Media-Type = 1 (Ethernet)
*Jan 17 14:37:17.392: SSS PM [uid:40][B4728388][AAA ID:51]: Authen-Status = 0 (Authenticated)
*Jan 17 14:37:17.392: SSS PM [uid:40][B4728388][AAA ID:51]: Nasport = PPPoEoVLAN: slot 0
adapter 0 port 1 sub-interface 102 IP 0.0.0.0 VPI 0 VCI 0 VLAN 102
*Jan 17 14:37:17.392: SSS PM [uid:40][B4728388][AAA ID:51]: Session-Handle = 385876049
(17000051)
*Jan 17 14:37:17.392: SSS PM [uid:40][B4728388][AAA ID:51]: AAA-Authen-Method-List = "AAA-4-
FORWARD"
*Jan 17 14:37:17.392: SSS PM [uid:40][B4728388][AAA ID:51]: Protocol-Type = 0 (PPP Access
Protocol)
*Jan 17 14:37:17.392: SSS PM [uid:40][B4728388][AAA ID:51]: Final = 1 (YES)
*Jan 17 14:37:17.392: SSS PM [uid:40][B4728388][AAA ID:51]: Auth-User = "pppoe@lns.com"
*Jan 17 14:37:17.392: SSS PM [uid:40][B4728388][AAA ID:51]: Auth-Domain = "lns.com"
*Jan 17 14:37:17.392: SSS PM [uid:40][B4728388][AAA ID:51]: SM Policy invoke - Got More Keys
*Jan 17 14:37:17.392: SSS PM [uid:40][B4728388][AAA ID:51]: Access type PPP: final key
*Jan 17 14:37:17.392: SSS PM [uid:40][B4728388][AAA ID:51]: Must apply config before continuing
*Jan 17 14:37:17.392: SSS PM [uid:40][B4728388][AAA ID:51]: Handling Config Request from Client
*Jan 17 14:37:17.392: SSS PM [uid:40][B4728388][AAA ID:51]: Event <got process config req>,
State: need-init-keys to need-init-keys
*Jan 17 14:37:17.392: SSS PM [uid:40][B4728388][AAA ID:51]: Handling Process Config
*Jan 17 14:37:17.392: SSS PM [uid:40][B4728388][AAA ID:51]: Apply config request set to AAA list
Config: service-type 0 5 [Outbound]
Config: tunnel-type 0 3 [l2tp]
Config: Framed-Protocol 0 1 [PPP]
Config: tunnel-medium-type 0 1 [IPv4]
Config: tunnel-id 0 "lac-via-radius"
Config: tunnel-password 0 <hidden>
Config: tunnel-server-endpoi 0 "172.19.1.1"
Config: tunnel-client-endpoi 0 "172.19.1.2"
*Jan 17 14:37:17.392: SSS PM [uid:40][B4728388][AAA ID:51]: Sending pppoe@lns.com request to AAA
*Jan 17 14:37:17.392: SSS PM [uid:40][B4728388][AAA ID:51]: SSS PM: Allocating per-user profile
info
*Jan 17 14:37:17.392: SSS PM [uid:40][B4728388][AAA ID:51]: SSS PM: Add per-user profile info to
policy context
*Jan 17 14:37:17.392: SSS AAA AUTHOR [uid:40][AAA ID:51]: Root SIP PPPoE
*Jan 17 14:37:17.392: SSS AAA AUTHOR [uid:40][AAA ID:51]: Enable PPPoE parsing
*Jan 17 14:37:17.392: SSS AAA AUTHOR [uid:40][AAA ID:51]: Enable PPP parsing
*Jan 17 14:37:17.392: SSS PM [uid:40][B4728388][AAA ID:51]: ACTIVE HANDLE[0]: Snapshot captured
in Active context
*Jan 17 14:37:17.392: SSS PM [uid:40][B4728388][AAA ID:51]: ACTIVE HANDLE[0]: Active context
created
*Jan 17 14:37:17.392: SSS AAA AUTHOR [uid:40][AAA ID:51]: Event <make request>, state changed
from idle to authorizing
*Jan 17 14:37:17.392: SSS AAA AUTHOR [uid:40][AAA ID:51]: Active key set to Auth-User
*Jan 17 14:37:17.392: SSS AAA AUTHOR [uid:40][AAA ID:51]: Authorizing key pppoe@lns.com
*Jan 17 14:37:17.392: SSS AAA AUTHOR [uid:40][AAA ID:51]: Spoofed AAA reply sent for key
pppoe@lns.com
*Jan 17 14:37:17.392: SSS AAA AUTHOR [uid:40][AAA ID:51]: Received an AAA pass
*Jan 17 14:37:17.392: SSS AAA AUTHOR [uid:40][AAA ID:51]: [B4728388]:Reply message not exist
Initial attr service-type 0 5 [Outbound]
Initial attr tunnel-type 0 3 [l2tp]
Initial attr Framed-Protocol 0 1 [PPP]
Initial attr tunnel-medium-type 0 1 [IPv4]
```

```

Initial attr tunnel-id          0 "lac-via-radius"
Initial attr tunnel-password     0 <hidden>
Initial attr tunnel-server-endpoi 0 "172.19.1.1"
Initial attr tunnel-client-endpoi 0 "172.19.1.2"
*Jan 17 14:37:17.392: SSS PM [uid:40][B4728388][AAA ID:51]:
policy key list doesn't have IPv4 address
*Jan 17 14:37:17.392: SSS PM: PARAMETERIZED-QoS: QoS parameters
*Jan 17 14:37:17.392: SSS PM [uid:40][B4728388][AAA ID:51]: RULE: VRF Parsing routine:
  service-type          0 5 [Outbound]
  tunnel-type           0 3 [l2tp]
  Framed-Protocol       0 1 [PPP]
  tunnel-medium-type    0 1 [IPv4]
  tunnel-id             0 "lac-via-radius"
  tunnel-password       0 <hidden>
  tunnel-server-endpoi 0 "172.19.1.1"
  tunnel-client-endpoi 0 "172.19.1.2"
*Jan 17 14:37:17.392: SSS AAA AUTHOR [uid:40][AAA ID:51]: Parsed service; VPDN
*Jan 17 14:37:17.393: SSS AAA AUTHOR [uid:40][AAA ID:51]: SIP PPP[A4700F0] parsed as Success
*Jan 17 14:37:17.393: SSS AAA AUTHOR [uid:40][AAA ID:51]: SIP PPP[B009900] parsed as Ignore
*Jan 17 14:37:17.393: SSS AAA AUTHOR [uid:40][AAA ID:51]: SIP PPPoE[A501AC0] parsed as Success
*Jan 17 14:37:17.393: SSS AAA AUTHOR [uid:40][AAA ID:51]: Event <found service>, state changed
from authorizing to complete
*Jan 17 14:37:17.393: SSS AAA AUTHOR [uid:40][AAA ID:51]: Found service info for key
pppoe@lns.com
*Jan 17 14:37:17.393: SSS AAA AUTHOR [uid:40][AAA ID:51]: Active Handle present - FB000007
*Jan 17 14:37:17.393: SSS PM [uid:40][B4728388][AAA ID:51]: Apply config handle [750003F8] now
set to [180003FE]
*Jan 17 14:37:17.393: SSS PM [uid:40][B4728388][AAA ID:51]: ACTIVE HANDLE[0]: Snapshot reverted
from Active context to policy context
*Jan 17 14:37:17.393: SSS AAA AUTHOR [uid:40][AAA ID:51]: Freeing Active Handle; SSS Policy
Context Handle = 1D000028
*Jan 17 14:37:17.393: SSS PM [uid:40][B4728388][AAA ID:51]: ACTIVE HANDLE[2829]: Released active
handle
*Jan 17 14:37:17.393: SSS AAA AUTHOR [uid:40][AAA ID:51]: PM directive AAA:VPDN maps to
PM:Forwarding
*Jan 17 14:37:17.393: SSS PM [uid:40][B4728388][AAA ID:51]: PROFILE: store profile
"pppoe@lns.com"
*Jan 17 14:37:17.393: SSS PM: PROFILE-DB: is profile "pppoe@lns.com" in DB
*Jan 17 14:37:17.393: SSS PM: PROFILE-DB: Computed hash value = 2347614612
*Jan 17 14:37:17.393: SSS PM: PROFILE-DB: No, add new list
*Jan 17 14:37:17.393: SSS PM: PROFILE-DB: create "pppoe@lns.com"
*Jan 17 14:37:17.393: SSS PM: PROFILE-DB: create "pppoe@lns.com"/B48191D8 hdl 4D000400 ref 1
*Jan 17 14:37:17.393: SSS PM [uid:40][B4728388][AAA ID:51]: PROFILE: create B481B924, ref 1
*Jan 17 14:37:17.393: SSS AAA AUTHOR [uid:40][AAA ID:51]: Event <free request>, state changed
from complete to terminal
*Jan 17 14:37:17.393: SSS AAA AUTHOR [uid:40][AAA ID:51]: Cancel request
*Jan 17 14:37:17.393: SSS PM [uid:40][B4728388][AAA ID:51]: Handling Author Found Event
*Jan 17 14:37:17.393: SSS PM [uid:40][B4728388][AAA ID:51]: Plumbing proposed by FSP
*Jan 17 14:37:17.393: SSS PM [uid:40][B4728388][AAA ID:51]: Policy reply - Forwarding
*Jan 17 14:37:17.393: SSS PM [uid:40][B4728388][AAA ID:51]: FSP info: B45F7020/VPDN data&colon;
B460E1C8 SVM: 00000000
*Jan 17 14:37:17.393: SSS PM [uid:40][B4728388][AAA ID:51]: Apply of config finished; provide
the found network service
*Jan 17 14:37:17.393: SSS PM [uid:40][B4728388][AAA ID:51]: Network service found; continuing
rule
*Jan 17 14:37:17.393: SSS PM [uid:40][B4728388][AAA ID:51]: RULE[0]: Continue
*Jan 17 14:37:17.393: SSS PM [uid:40][B4728388][AAA ID:51]: RULE[0]: DOMAIN/PPP-4-FORWARD event
session-start/20 authenticate aaa list AAA-4-FORWARD
*Jan 17 14:37:17.393: SSS PM [uid:40][B4728388][AAA ID:51]: RULE[0]: Run action with no altered
name
*Jan 17 14:37:17.393: SSS PM [uid:40][B4728388][AAA ID:51]: State: need-init-keys to initial-req
*Jan 17 14:37:17.393: SSS PM [uid:40][B4728388][AAA ID:51]: RULE[0]: Have key Auth-User
*Jan 17 14:37:17.393: SSS PM [uid:40][B4728388][AAA ID:51]: RULE[1]: Continue
*Jan 17 14:37:17.393: SSS PM [uid:40][B4728388][AAA ID:51]: RULE[1]: DOMAIN/PPP-4-FORWARD event

```

session-start/20 authenticate aaa list AAA-4-FORWARD
*Jan 17 14:37:17.393: SSS PM [uid:40][B4728388][AAA ID:51]: RULE[1]: Back to parent rule
*Jan 17 14:37:17.393: SSS PM [uid:40][B4728388][AAA ID:51]: RULE[1]: Run next parent action
*Jan 17 14:37:17.393: SSS PM [uid:40][B4728388][AAA ID:51]: RULE[2]: Continue
*Jan 17 14:37:17.393: SSS PM [uid:40][B4728388][AAA ID:51]: RULE[2]: PPPOE/PPP event session-start/12 service-policy type control DOMAIN
*Jan 17 14:37:17.393: SSS PM [uid:40][B4728388][AAA ID:51]: Client block is NULL in get client block with handle 1D000028
*Jan 17 14:37:17.393: SSS PM [uid:40][B4728388][AAA ID:51]: RULE[2]: No more actions to run
*Jan 17 14:37:17.393: SSS PM [uid:40][B4728388][AAA ID:51]: RULE[3]: Continue
*Jan 17 14:37:17.393: SSS PM [uid:40][B4728388][AAA ID:51]: RULE[3]: PPPOE/PPP event session-start/12 service-policy type control DOMAIN
*Jan 17 14:37:17.393: SSS PM [uid:40][B4728388][AAA ID:51]: RULE[3]: Using previously offered directive Forwarding
*Jan 17 14:37:17.393: SSS PM [uid:40][B4728388][AAA ID:51]: RULE[4]: Continue
*Jan 17 14:37:17.393: SSS PM [uid:40][B4728388][AAA ID:51]: RULE[4]: PPPOE/PPP event session-start/12 service-policy type control DOMAIN
*Jan 17 14:37:17.393: SSS PM [uid:40][B4728388][AAA ID:51]: Client block is NULL in get client block with handle 1D000028
*Jan 17 14:37:17.393: SSS PM [uid:40][B4728388][AAA ID:51]: Event <srvf found>, State: initial-req to wait-for-events
*Jan 17 14:37:17.393: SSS PM [uid:40][B4728388][AAA ID:51]: Handling Service Direction
*Jan 17 14:37:17.393: SSS PM [uid:40][B4728388][AAA ID:51]: Policy reply - Forwarding
*Jan 17 14:37:17.393: SSS PM [uid:40][B4728388][AAA ID:51]: Plumbing proposed by FSP
*Jan 17 14:37:17.393: SSS PM [uid:40][B4728388][AAA ID:51]: Policy reply - Forwarding
*Jan 17 14:37:17.393: SSS PM [uid:40][B4728388][AAA ID:51]: RULE: Looking for a rule for event session-service-found
*Jan 17 14:37:17.393: SSS PM [uid:40][B4728388][AAA ID:51]: RULE: Intf CloneSrc Vt2: service-rule any: PPPOE
*Jan 17 14:37:17.393: SSS PM [uid:40][B4728388][AAA ID:51]: RULE: Evaluate "PPPOE" for session-service-found
*Jan 17 14:37:17.393: SSS PM [uid:40][B4728388][AAA ID:51]: RULE: Not matched "PPPOE/PPP event session-start"
*Jan 17 14:37:17.393: SSS PM [uid:40][B4728388][AAA ID:51]: RULE: No match for "PPPOE"
*Jan 17 14:37:17.393: SSS PM [uid:40][B4728388][AAA ID:51]: RULE: Intf InputI/f Et0/1.102: service-rule any: None
*Jan 17 14:37:17.393: SSS PM [uid:40][B4728388][AAA ID:51]: RULE: Glob: service-rule any: None
*Jan 17 14:37:17.393: SSS PM: ANCP not enabled on 'Ethernet0/1.102' - not retrieving default shaper value
*Jan 17 14:37:17.393: SSS PM: ANCP not enabled on 'Ethernet0/1.102' - not retrieving default shaper value
*Jan 17 14:37:17.394: ppp40 PPP: No AAA accounting method list
*Jan 17 14:37:17.397: SSS PM: ANCP not enabled on 'Ethernet0/1.102' - not retrieving default shaper value
*Jan 17 14:37:17.397: SSS PM: ANCP not enabled on 'Ethernet0/1.102' - not retrieving default shaper value
*Jan 17 14:37:17.397: SSS PM [uid:40][B4728388][AAA ID:51]: SM Policy invoke - Apply Config Success
*Jan 17 14:37:17.397: SSS PM [uid:40][B4728388][AAA ID:51]: [PARAMETERIZED-QoS]: No rabapol context created yet for handle [1D000028], returning compatible
*Jan 17 14:37:17.397: SSS PM [uid:40][B4728388][AAA ID:51]: Event <got apply config success>, State: wait-for-events to wait-for-events
*Jan 17 14:37:17.397: SSS PM [uid:40][B4728388][AAA ID:51]: Handling Apply Config; SUCCESS
*Jan 17 14:37:17.397: SSS PM [uid:40][B4728388][AAA ID:51]: session start done
*Jan 17 14:37:17.397: SSS PM [uid:40][B4728388][AAA ID:51]: Removed attribute list just processed
*Jan 17 14:37:17.397: SSS PM [uid:40][B4728388][AAA ID:51]: no callback for callback north
*Jan 17 14:37:17.397: SSS PM [uid:40][B4728388][AAA ID:51]: Client block is NULL in get client block with handle 1D000028
*Jan 17 14:37:17.397: SSS PM [uid:40][B4728388][AAA ID:51]: Null client block; Can't update RP
*Jan 17 14:37:17.397: SSS PM [uid:40][B4728388][AAA ID:51]: Client block is NULL in get client block with handle 1D000028
*Jan 17 14:37:17.397: SSS PM [uid:40][B4728388][AAA ID:51]: No pending events to process
*Jan 17 14:37:17.397: SSS PM [uid:40][B4728388][AAA ID:51]: No pending eventst

*Jan 17 14:37:17.397: ppp40 PPP: Phase is FORWARDED, Session Forwarded