

# VPN 3000 RADIUS с функцией истечение срока и использованием сервер проверки подлинности в Интернете Microsoft (IAS)

## Содержание

[Введение](#)

[Предварительные условия](#)

[Требования](#)

[Используемые компоненты](#)

[Схема сети](#)

[Условные обозначения](#)

[Настройте RADIUS VPN 3000 с характеристикой проверки срока действия](#)

[Настройка концентратора VPN 3000](#)

[Настройте Microsoft IAS](#)

[Проверка](#)

[Устранение неполадок](#)

[Дополнительные сведения](#)

## Введение

Этот документ выделяет шаги для настройки RADIUS с Характеристикой проверки срока действия на VPN 3000 Concentrator. Microsoft Internet Authentication Service (IAS), настроенный для MS-CHAP2 (PAP, не поддерживаемый для этой функции), используется в качестве сервера RADIUS в данном примере. С этой активированной опцией пользователям VPN предлагают изменить пароль Microsoft Windows с истекшим сроком, когда они запускают Cisco VPN Client для соединения с VPN 3000 Concentrator.

См. [Настраивают концентраторы Cisco VPN серии 3000 для Поддержки Характеристики истечение срока действия пароля NT с сервером RADIUS](#) для узнавания больше о том же сценарии с Проверкой подлинности RADIUS.

## Предварительные условия

### Требования

Для этого документа отсутствуют особые требования.

### Используемые компоненты

Сведения, содержащиеся в данном документе, касаются следующих версий программного

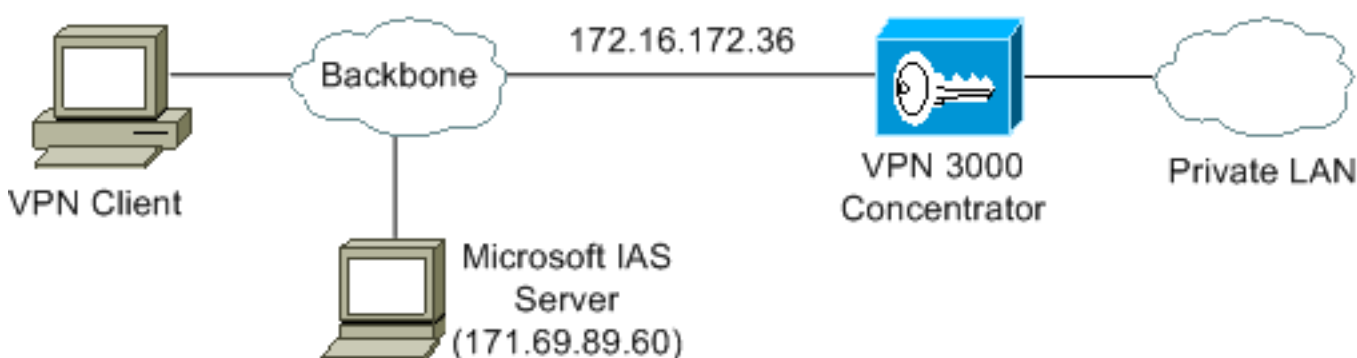
обеспечения и оборудования:

- Cisco VPN 3000 Concentrator с выпуском 3.5.3A программного обеспечения Cisco IOS
- Версия клиентской части Cisco VPN 3.5.1C
- Microsoft IAS установлен на Сервере Windows 2000
- Пользователи в этом документе определены в Сервере Active Directory Microsoft Windows 2000

Сведения, представленные в этом документе, были получены от устройств, работающих в специальной лабораторной среде. Все устройства, описанные в этом документе, были запущены с чистой (стандартной) конфигурацией. В рабочей сети необходимо изучить потенциальное воздействие всех команд до их использования.

## Схема сети

В настоящем документе используется следующая схема сети:



## Условные обозначения

[Более подробную информацию о применяемых в документе обозначениях см. в описании условных обозначений, используемых в технической документации Cisco.](#)

## Настройте RADIUS VPN 3000 с характеристикой проверки срока действия

### Настройка концентратора VPN 3000

Для настройки VPN-концентратора 3000 выполните следующие действия.

1. Choose Configuration> User Management> Groups для настройки группы VPN.

Configuration | User Management | Groups | Modify windowsuser

Check the **Inherit?** box to set a field that you want to default to the base group value. Uncheck the **Inherit?** box and enter a new value to override base group values.

Identity | General | IPsec | Mode Config | Client FW | HW Client | PPTP/L2TP

Identity Parameters		
Attribute	Value	Description
Group Name	windowsuser	Enter a unique name for the group.
Password	XXXXXXXXXXXXXXXXXX	Enter the password for the group.
Verify	XXXXXXXXXXXXXXXXXX	Verify the group's password.
Type	Internal	<i>External</i> groups are configured on an external authentication server (e.g. RADIUS). <i>Internal</i> groups are configured on the VPN 3000 Concentrator's Internal Database.

Apply Cancel

2. Задайте метод Xauth, обозначенный "Аутентификацией" как "RADIUS с Истечением" под вкладкой IPsec.

Identity | General | IPsec | Mode Config | Client FW | HW Client | PPTP/L2TP

IPsec Parameters			
Attribute	Value	Inherit?	Description
IPsec SA	ESP-3DES-MD5	<input checked="" type="checkbox"/>	Select the group's IPsec Security Association.
IKE Peer Identity Validation	If supported by certificate	<input checked="" type="checkbox"/>	Select whether or not to validate the identity of the peer using the peer's certificate.
IKE Keepalives	<input checked="" type="checkbox"/>	<input checked="" type="checkbox"/>	Check to enable the use of IKE keepalives for members of this group.
Tunnel Type	Remote Access	<input checked="" type="checkbox"/>	Select the type of tunnel for this group. Update the Remote Access parameters below as needed.
Remote Access Parameters			
Group Lock	<input type="checkbox"/>	<input checked="" type="checkbox"/>	Lock users into this group.
Authentication	RADIUS with Expiry	<input type="checkbox"/>	Select the authentication method for members of this group. This parameter does not apply to <b>Individual User Authentication</b> .
IPComp	None	<input checked="" type="checkbox"/>	Select the method of IP Compression for members of this group.
Reauthentication on Rekey	<input type="checkbox"/>	<input checked="" type="checkbox"/>	Check to reauthenticate the user on an IKE (Phase-1) rekey.
Mode Configuration	<input checked="" type="checkbox"/>	<input checked="" type="checkbox"/>	Check to initiate the exchange of Mode Configuration parameters with the client. This must be checked if version 2.5 (or earlier) of the the Altiga/Cisco client are being used by members of this group.

Apply Cancel

3. Выберите Configuration> System> Servers> Authentication для определения сервера RADIUS.

Configuration | System | Servers | Authentication | Modify

Change a configured user authentication server.

**Server Type**  Selecting *Internal Server* will let you add users to the internal user database.

**Authentication Server**  Enter IP address or hostname.

**Server Port**  Enter 0 for default port (1645).

**Timeout**  Enter the timeout for this server (seconds).

**Retries**  Enter the number of retries for this server.

**Server Secret**  Enter the RADIUS server secret.

**Verify**  Re-enter the secret.

4. Определите метод присвоения IP-адреса. Данный пример использует пул IP-адреса, определенный локально на VPN 3000 Concentrator.

Configuration | System | Address Management | Assignment

This section presents Address Assignment options. Each of the following methods are tried, in order, until an address is found.

**Use Client Address**  Check to use the IP address supplied by the client. This can be overridden by user/group configuration.

**Use Address from Authentication Server**  Check to use an IP address retrieved from an authentication server for the client.

**Use DHCP**  Check to use DHCP to obtain an IP address for the client.

**Use Address Pools**  Check to use internal address pool configuration to obtain an IP address for the client.

5. Определите пул IP-адреса.

Configuration | System | Address Management | Pools Save

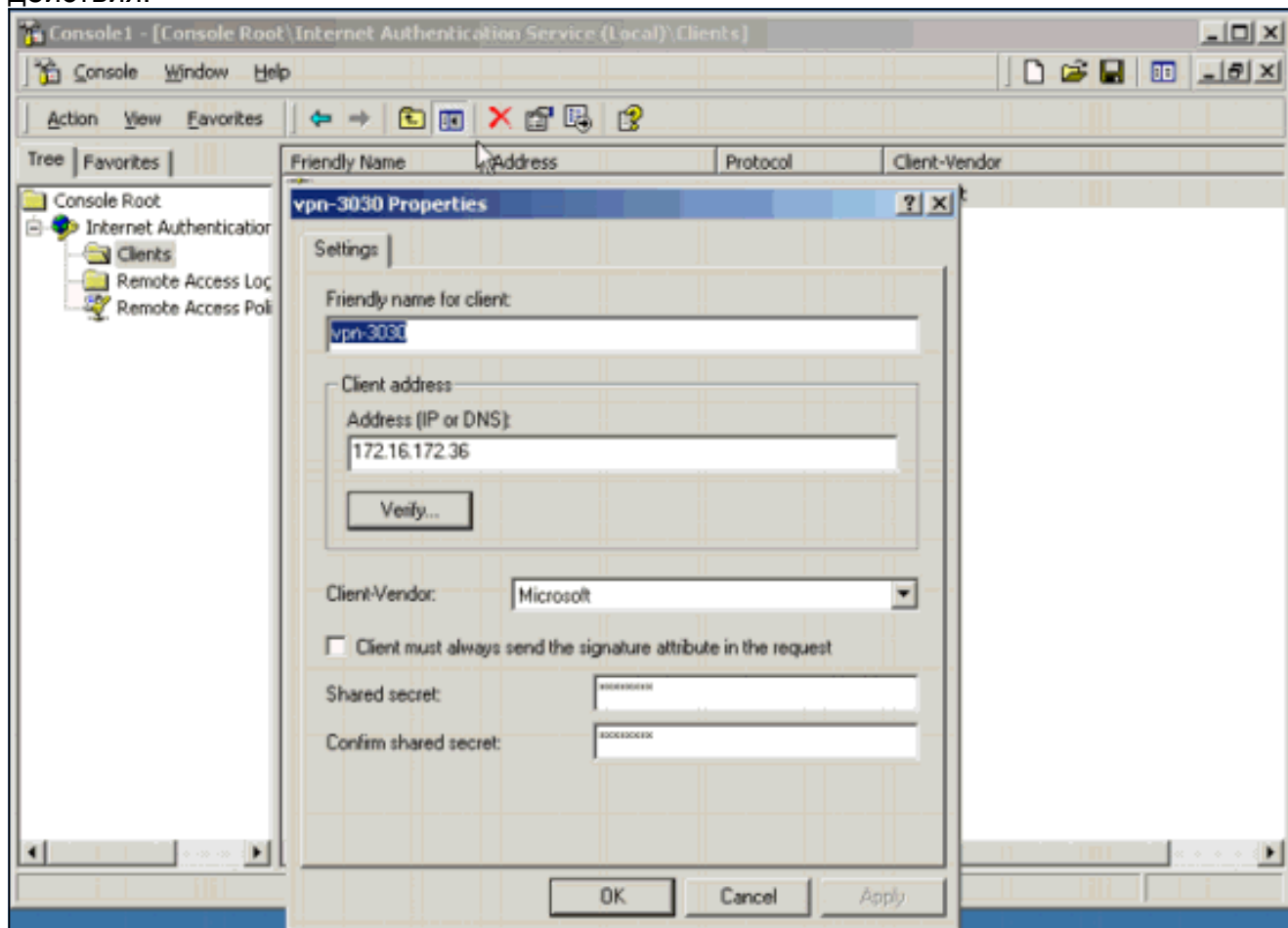
This section lets you configure IP Address Pools.

Click the **Add** button to add a pool entry, or select a pool and click **Modify**, **Delete** or **Move**.

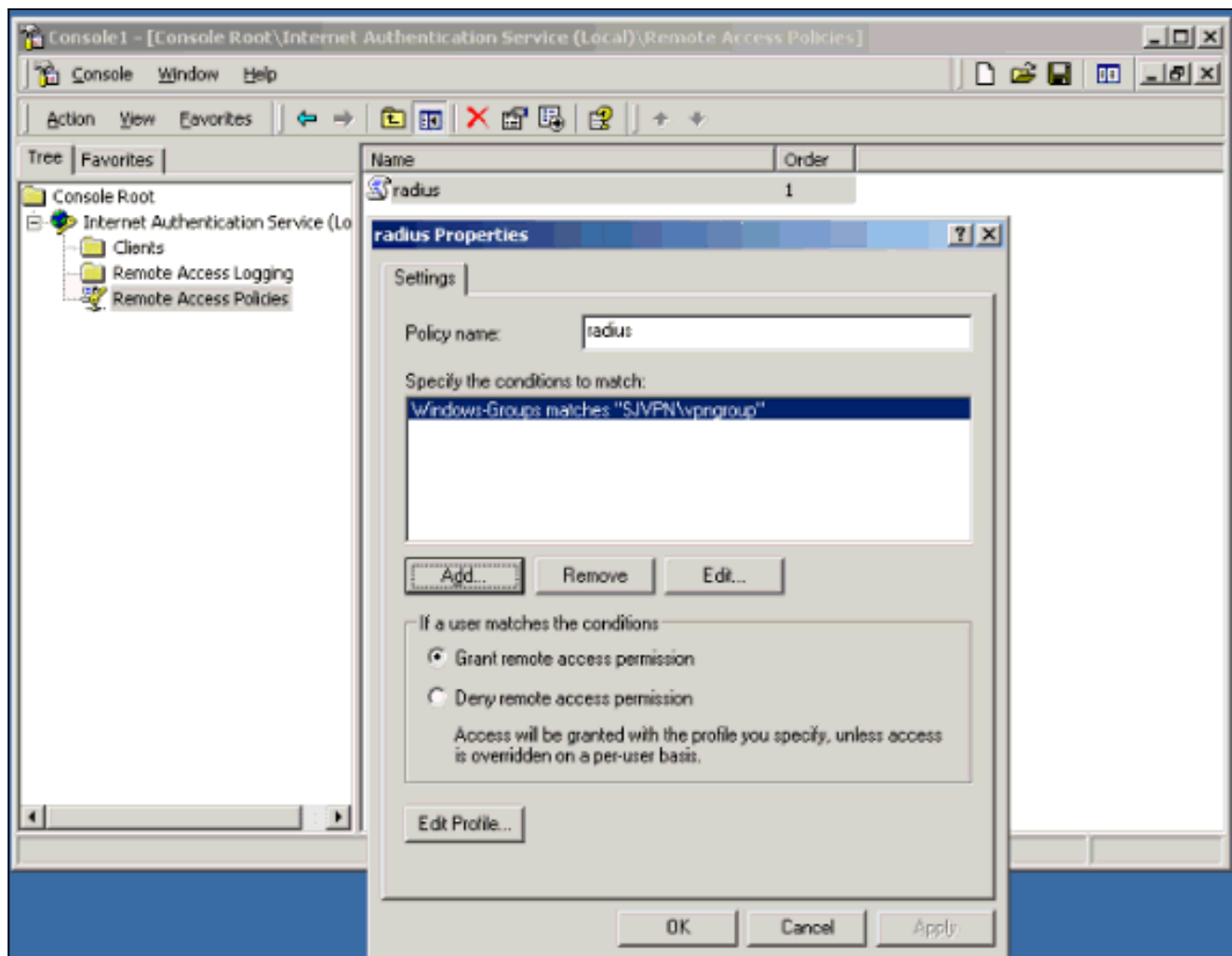
IP Pool Entry	Actions
10.10.10.1 - 10.10.10.254	<input type="button" value="Add"/> <input type="button" value="Modify"/> <input type="button" value="Delete"/> <input type="button" value="Move Up"/> <input type="button" value="Move Down"/>

Выполните эти шаги для настройки Microsoft IAS.

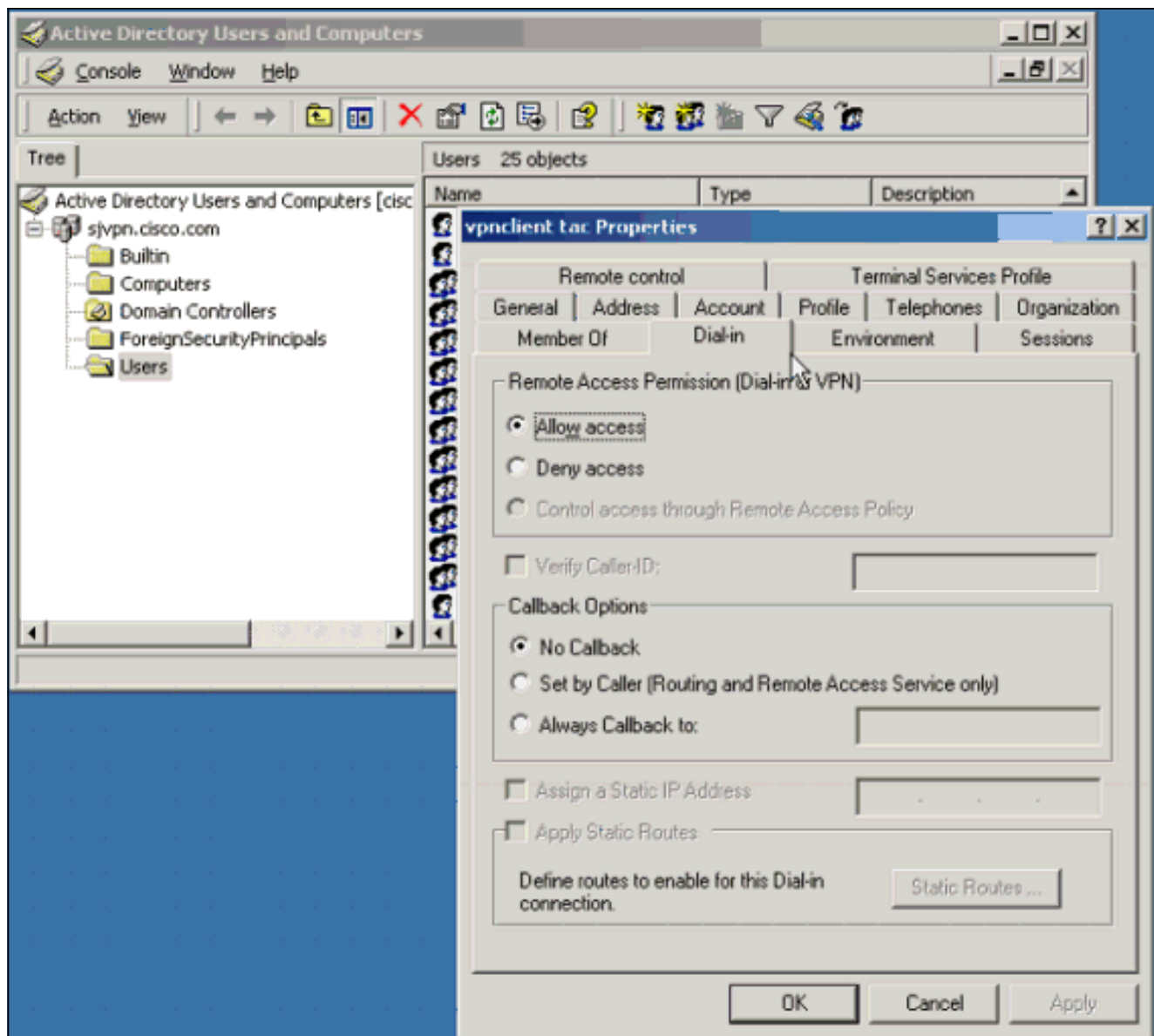
1. Определите VPN 3000 Concentrator как клиента. **Примечание:** Microsoft выбрана в качестве Клиента - поставщика для получения поддержки Microsoft Vendor-Specific Attributes (VSA), требуемый RADIUS с Характеристикой проверки срока действия.



2. Определите политику удаленного доступа. Под этой политикой задана группа Windows, которая содержит всех пользователей VPN.

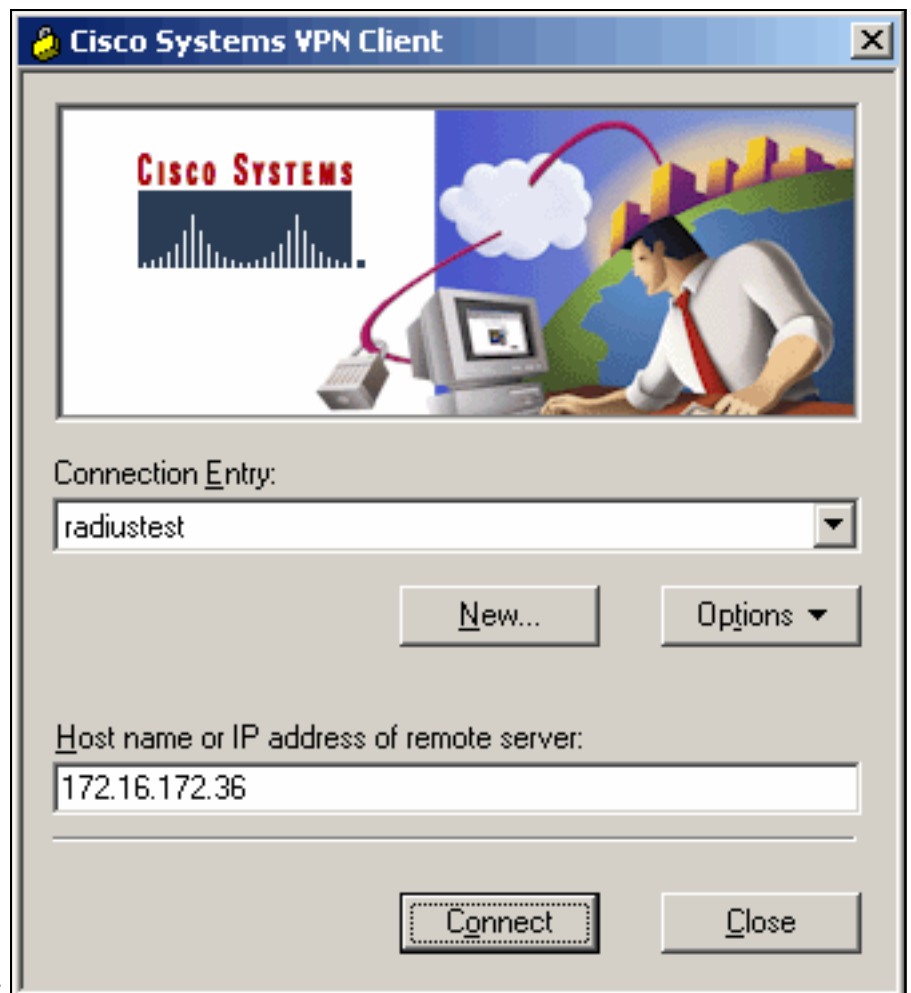


**Примечание:** Пользователи Windows должны проверить, **Предоставляют доступ** в соответствии с Разрешениями Удаленного доступа (Наборный (телефонный) доступ или VPN) раздел в профиле пользователя как показано ниже.

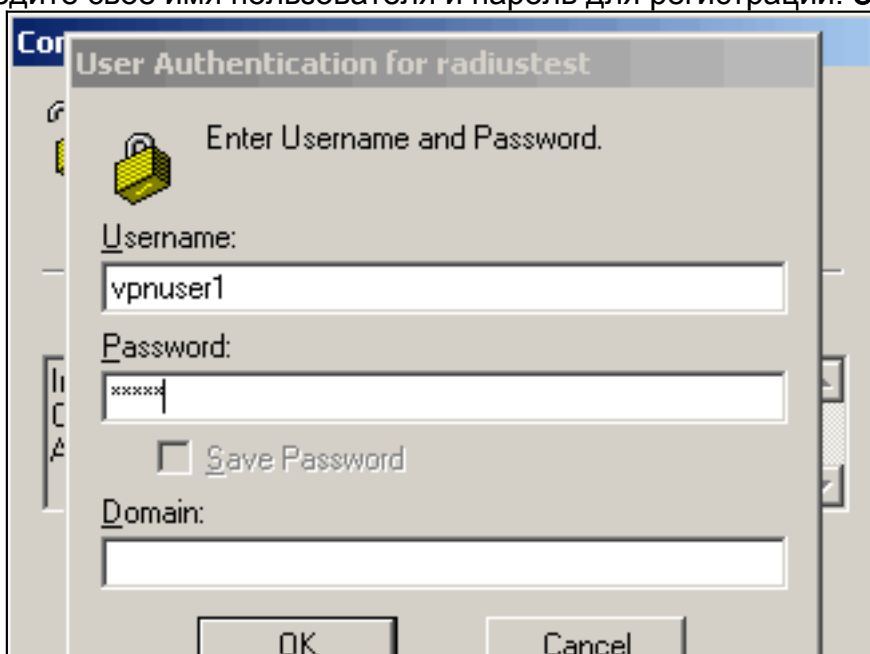


## Проверка

Эти примеры демонстрируют, как RADIUS с Характеристикой проверки срока действия работает, когда истекает Пароль Windows. Пользователю VPN сообщают, что пароль истек и побудил вводить новый.



1. Запустите Cisco VPN Client.
2. Введите свое имя пользователя и пароль для регистрации. **Затем нажмите кнопку**



OK.

3. Когда Пароль Windows истечет, вам предложат изменить пароль. Введите новый пароль. Введите снова, чтобы подтвердить его и нажать





## Устранение неполадок

Этот раздел показывает журнал событий, перехваченный на VPN 3000 Concentrator во время согласования туннеля. См. полужирные части, чтобы видеть, как Microsoft VSAs передают между IAS и VPN 3000 Concentrator, чтобы сообщить пользователю VPN, что пароль истек, и возвращают пароль новых окон от пользователя VPN к базе данных Пользователя Windows.

```
1 08/06/2002 16:45:40.920 SEV=8 AUTHDBG/1 RPT=263
AUTH_Open() returns 102

2 08/06/2002 16:45:40.920 SEV=7 AUTH/12 RPT=264
Authentication session opened: handle = 102

3 08/06/2002 16:45:40.920 SEV=8 AUTHDBG/3 RPT=302
AUTH_PutAttrTable(102, 742784)

4 08/06/2002 16:45:40.920 SEV=8 AUTHDBG/6 RPT=183
AUTH_GroupAuthenticate(102, 9aa2e24, 4983ac)

5 08/06/2002 16:45:40.920 SEV=8 AUTHDBG/59 RPT=302
AUTH_BindServer(9a03fcc, 0, 0)

6 08/06/2002 16:45:40.920 SEV=9 AUTHDBG/69 RPT=302
Auth Server 18cdfa4 has been bound to ACB 9a03fcc, sessions = 1

7 08/06/2002 16:45:40.920 SEV=8 AUTHDBG/65 RPT=302
AUTH_CreateTimer(9a03fcc, 0, 0)

8 08/06/2002 16:45:40.920 SEV=9 AUTHDBG/72 RPT=302
Reply timer created: handle = 5A0C001B

9 08/06/2002 16:45:40.920 SEV=8 AUTHDBG/61 RPT=302
AUTH_BuildMsg(9a03fcc, 0, 0)
```

10 08/06/2002 16:45:40.920 SEV=8 AUTHDBG/64 RPT=302  
AUTH\_StartTimer(9a03fcc, 0, 0)

11 08/06/2002 16:45:40.920 SEV=9 AUTHDBG/73 RPT=302  
Reply timer started: handle = 5A0C001B, timestamp = 355273988, timeout = 30000

12 08/06/2002 16:45:40.920 SEV=8 AUTHDBG/62 RPT=302  
AUTH\_SndRequest(9a03fcc, 0, 0)

13 08/06/2002 16:45:40.920 SEV=8 AUTHDBG/50 RPT=477  
IntDB\_Decode(62fd1a8, 146)

14 08/06/2002 16:45:40.920 SEV=10 AUTHDECODE/12 RPT=1  
IntDB: Type = 1 (0x01) User-Name

15 08/06/2002 16:45:40.920 SEV=10 AUTHDECODE/13 RPT=1  
IntDB: Length = 11 (0x0B)

16 08/06/2002 16:45:40.920 SEV=10 AUTHDECODE/14 RPT=1  
IntDB: Value (String) =

17 08/06/2002 16:45:40.920 SEV=10 AUTHDECODE/0 RPT=1  
0000: 77696E64 6F777375 736572 windowsuser

18 08/06/2002 16:45:40.920 SEV=10 AUTHDECODE/12 RPT=2  
IntDB: Type = 5 (0x05) NAS-Port

19 08/06/2002 16:45:40.920 SEV=10 AUTHDECODE/13 RPT=2  
IntDB: Length = 4 (0x04)

20 08/06/2002 16:45:40.920 SEV=10 AUTHDECODE/15 RPT=1  
IntDB: Value (Integer) = 0 (0x0000)

21 08/06/2002 16:45:40.920 SEV=10 AUTHDECODE/12 RPT=3  
IntDB: Type = 6 (0x06) Service-Type

22 08/06/2002 16:45:40.920 SEV=10 AUTHDECODE/13 RPT=3  
IntDB: Length = 4 (0x04)

23 08/06/2002 16:45:40.920 SEV=10 AUTHDECODE/15 RPT=2  
IntDB: Value (Integer) = 2 (0x0002)

24 08/06/2002 16:45:40.920 SEV=10 AUTHDECODE/12 RPT=4  
IntDB: Type = 7 (0x07) Framed-Protocol

25 08/06/2002 16:45:40.920 SEV=10 AUTHDECODE/13 RPT=4  
IntDB: Length = 4 (0x04)

26 08/06/2002 16:45:40.920 SEV=10 AUTHDECODE/15 RPT=3  
IntDB: Value (Integer) = 1 (0x0001)

27 08/06/2002 16:45:40.920 SEV=10 AUTHDECODE/12 RPT=5  
IntDB: Type = 66 (0x42) Tunnel-Client-Endpoint

28 08/06/2002 16:45:40.920 SEV=10 AUTHDECODE/13 RPT=5  
IntDB: Length = 12 (0x0C)

29 08/06/2002 16:45:40.920 SEV=10 AUTHDECODE/14 RPT=2  
IntDB: Value (String) =

30 08/06/2002 16:45:40.920 SEV=10 AUTHDECODE/0 RPT=2  
0000: 3137312E 36392E38 392E3930 171.69.89.90

31 08/06/2002 16:45:40.920 SEV=10 AUTHDECODE/12 RPT=6  
IntDB: Type = 4118 (0x1016) Authentication-Server-Type

32 08/06/2002 16:45:40.920 SEV=10 AUTHDECODE/13 RPT=6  
IntDB: Length = 4 (0x04)

33 08/06/2002 16:45:40.920 SEV=10 AUTHDECODE/15 RPT=4  
IntDB: Value (Integer) = 5 (0x0005)

34 08/06/2002 16:45:40.920 SEV=8 AUTHDBG/47 RPT=477  
IntDB\_Xmt(9a03fcc)

35 08/06/2002 16:45:40.920 SEV=9 AUTHDBG/71 RPT=302  
xmit\_cnt = 1

36 08/06/2002 16:45:40.920 SEV=8 AUTHDBG/47 RPT=478  
IntDB\_Xmt(9a03fcc)

37 08/06/2002 16:45:41.020 SEV=8 AUTHDBG/49 RPT=239  
IntDB\_Match(9a03fcc, 62f1c4c)

38 08/06/2002 16:45:41.020 SEV=8 AUTHDBG/63 RPT=302  
AUTH\_RcvReply(9a03fcc, 0, 0)

39 08/06/2002 16:45:41.020 SEV=8 AUTHDBG/50 RPT=478  
IntDB\_Decode(62f1c4c, 170)

40 08/06/2002 16:45:41.020 SEV=10 AUTHDECODE/12 RPT=7  
IntDB: Type = 1 (0x01) User-Name

41 08/06/2002 16:45:41.020 SEV=10 AUTHDECODE/13 RPT=7  
IntDB: Length = 11 (0x0B)

42 08/06/2002 16:45:41.020 SEV=10 AUTHDECODE/14 RPT=3  
IntDB: Value (String) =

43 08/06/2002 16:45:41.020 SEV=10 AUTHDECODE/0 RPT=3  
0000: 77696E64 6F777375 736572 windowsuser

44 08/06/2002 16:45:41.020 SEV=10 AUTHDECODE/12 RPT=8  
IntDB: Type = 4109 (0x100D) IPSec-Authentication

45 08/06/2002 16:45:41.020 SEV=10 AUTHDECODE/13 RPT=8  
IntDB: Length = 4 (0x04)

46 08/06/2002 16:45:41.020 SEV=10 AUTHDECODE/15 RPT=5  
IntDB: Value (Integer) = 6 (0x0006)

47 08/06/2002 16:45:41.020 SEV=10 AUTHDECODE/12 RPT=9  
IntDB: Type = 4123 (0x101B) Split-Tunnel-Inclusion-List

48 08/06/2002 16:45:41.020 SEV=10 AUTHDECODE/13 RPT=9

IntDB: Length = 4 (0x04)

49 08/06/2002 16:45:41.020 SEV=10 AUTHDECODE/14 RPT=4  
IntDB: Value (String) =

50 08/06/2002 16:45:41.020 SEV=10 AUTHDECODE/0 RPT=4  
0000: 74657374 test

51 08/06/2002 16:45:41.020 SEV=10 AUTHDECODE/12 RPT=10  
IntDB: Type = 4151 (0x1037) Split-Tunneling-Policy

52 08/06/2002 16:45:41.020 SEV=10 AUTHDECODE/13 RPT=10  
IntDB: Length = 4 (0x04)

53 08/06/2002 16:45:41.020 SEV=10 AUTHDECODE/15 RPT=6  
IntDB: Value (Integer) = 1 (0x0001)

54 08/06/2002 16:45:41.020 SEV=8 AUTHDBG/48 RPT=239  
IntDB\_Rcv(9a03fcc)

55 08/06/2002 16:45:41.020 SEV=8 AUTHDBG/66 RPT=302  
AUTH\_DeleteTimer(9a03fcc, 0, 0)

56 08/06/2002 16:45:41.020 SEV=9 AUTHDBG/74 RPT=302  
Reply timer stopped: handle = 5A0C001B, timestamp = 355273998

57 08/06/2002 16:45:41.020 SEV=8 AUTHDBG/58 RPT=302  
AUTH\_Callback(9a03fcc, 0, 0)

58 08/06/2002 16:45:41.020 SEV=6 AUTH/41 RPT=218 171.69.89.90  
Authentication successful: handle = 102, server = Internal,  
group = windowsuser

59 08/06/2002 16:45:41.020 SEV=8 AUTHDBG/4 RPT=288  
AUTH\_GetAttrTable(102, 742a30)

60 08/06/2002 16:45:41.020 SEV=8 AUTHDBG/2 RPT=263  
AUTH\_Close(102)

61 08/06/2002 16:45:41.020 SEV=8 AUTHDBG/60 RPT=302  
AUTH\_UnbindServer(9a03fcc, 0, 0)

62 08/06/2002 16:45:41.020 SEV=9 AUTHDBG/70 RPT=302  
Auth Server 18cdfa4 has been unbound from ACB 9a03fcc, sessions = 0

63 08/06/2002 16:45:41.020 SEV=8 AUTHDBG/10 RPT=263  
AUTH\_Int\_FreeAuthCB(9a03fcc)

64 08/06/2002 16:45:41.020 SEV=7 AUTH/13 RPT=264  
Authentication session closed: handle = 102

65 08/06/2002 16:45:46.610 SEV=8 AUTHDBG/1 RPT=264  
AUTH\_Open() returns 103

66 08/06/2002 16:45:46.610 SEV=7 AUTH/12 RPT=265  
Authentication session opened: handle = 103

67 08/06/2002 16:45:46.610 SEV=8 AUTHDBG/3 RPT=303  
AUTH\_PutAttrTable(103, 7429b8)

68 08/06/2002 16:45:46.610 SEV=8 AUTHDBG/5 RPT=56  
AUTH\_Authenticate(103, 500a278, 4cad38)

69 08/06/2002 16:45:46.610 SEV=8 AUTHDBG/59 RPT=303

AUTH\_BindServer(9aa46fc, 0, 0)

70 08/06/2002 16:45:46.610 SEV=9 AUTHDBG/69 RPT=303  
Auth Server 18cela4 has been bound to ACB 9aa46fc, sessions = 1

71 08/06/2002 16:45:46.610 SEV=8 AUTHDBG/65 RPT=303  
AUTH\_CreateTimer(9aa46fc, 0, 0)

72 08/06/2002 16:45:46.610 SEV=9 AUTHDBG/72 RPT=303  
Reply timer created: handle = 5A0E0016

73 08/06/2002 16:45:46.610 SEV=8 AUTHDBG/61 RPT=303  
AUTH\_BuildMsg(9aa46fc, 0, 0)

74 08/06/2002 16:45:46.610 SEV=8 AUTHDBG/27 RPT=64  
Radius\_Build(9aa46fc)

75 08/06/2002 16:45:46.610 SEV=8 AUTHDBG/64 RPT=303  
AUTH\_StartTimer(9aa46fc, 0, 0)

76 08/06/2002 16:45:46.610 SEV=9 AUTHDBG/73 RPT=303  
Reply timer started: handle = 5A0E0016, timestamp = 355274557, timeout = 4000

**77 08/06/2002 16:45:46.610 SEV=8 AUTHDBG/62 RPT=303 AUTH\_SndRequest(9aa46fc, 0, 0)** 78 08/06/2002  
16:45:46.610 SEV=8 AUTHDBG/31 RPT=127 Radius\_Decode(62f1c4c, 156) 79 08/06/2002 16:45:46.610  
SEV=13 AUTHDECODE/0 RPT=5 0000: 0122009C 7F70A83B E37B9B27 31668A07 . "...p.i.{'lf.. 0010:  
1089C0A4 010A7670 6E757365 72310506 .....vpnuser1.. 0020: 0000041C 06060000 00020706 00000001  
..... 0030: 420E3137 312E3639 2E38392E 39301A18 B.171.69.89.90.. 0040: 00000137  
0B12BE14 D10DA7ED 8A00FD25 ...7.....% 0050: 47B90956 3B191A3A 00000137 19340000  
G..V;...7.4.. 0060: 62B6A996 DD4962AE 05FA5AAF FDDA96A9 b....Ib...Z..... 0070: 00000000  
00000000 3CA2008E A03CABCF .....<....<.. 0080: 73FB28E0 D1560A01 D96AAE3B BFB6DD42  
s(..V...j.;...B 0090: 0406AC10 AC243D06 00000005 .....\$=..... 89 08/06/2002 16:45:46.610 SEV=10  
AUTHDECODE/1 RPT=1 Radius: Code = 1 (0x01) 90 08/06/2002 16:45:46.610 SEV=10 AUTHDECODE/2 RPT=1  
Radius: Identifier = 34 (0x22) 91 08/06/2002 16:45:46.610 SEV=10 AUTHDECODE/3 RPT=1 Radius:  
Length = 156 (0x009C) 92 08/06/2002 16:45:46.610 SEV=10 AUTHDECODE/4 RPT=1 Radius: Vector: 93  
08/06/2002 16:45:46.610 SEV=10 AUTHDECODE/0 RPT=6 0000: 7F70A83B E37B9B27 31668A07 1089C0A4  
.p.i.{'lf..... 94 08/06/2002 16:45:46.610 SEV=10 AUTHDECODE/5 RPT=1 Radius: Type = 1 (0x01)  
User-Name 95 08/06/2002 16:45:46.610 SEV=10 AUTHDECODE/6 RPT=1 Radius: Length = 10 (0x0A) 96  
08/06/2002 16:45:46.610 SEV=10 AUTHDECODE/7 RPT=1 Radius: Value (String) = 97 08/06/2002  
16:45:46.610 SEV=10 AUTHDECODE/0 RPT=7 0000: 76706E75 73657231 vpnuser1 98 08/06/2002  
16:45:46.610 SEV=10 AUTHDECODE/5 RPT=2> Radius: Type = 5 (0x05) NAS-Port 99 08/06/2002  
16:45:46.610 SEV=10 AUTHDECODE/6 RPT=2 Radius: Length = 6 (0x06) 100 08/06/2002 16:45:46.610  
SEV=10 AUTHDECODE/11 RPT=1 Radius: Value (Hex) = 0x41C 101 08/06/2002 16:45:46.610 SEV=10  
AUTHDECODE/5 RPT=3 Radius: Type = 6 (0x06) Service-Type 102 08/06/2002 16:45:46.610 SEV=10  
AUTHDECODE/6 RPT=3 Radius: Length = 6 (0x06) 103 08/06/2002 16:45:46.610 SEV=10 AUTHDECODE/11  
RPT=2 Radius: Value (Hex) = 0x2 104 08/06/2002 16:45:46.610 SEV=10 AUTHDECODE/5 RPT=4 Radius:  
Type = 7 (0x07) Framed-Protocol 105 08/06/2002 16:45:46.610 SEV=10 AUTHDECODE/6 RPT=4 Radius:  
Length = 6 (0x06) 106 08/06/2002 16:45:46.610 SEV=10 AUTHDECODE/11 RPT=3 Radius: Value (Hex) =  
0x1 107 08/06/2002 16:45:46.610 SEV=10 AUTHDECODE/5 RPT=5 Radius: Type = 66 (0x42) Tunnel-  
Client-Endpoint 108 08/06/2002 16:45:46.610 SEV=10 AUTHDECODE/6 RPT=5 Radius: Length = 14 (0x0E)  
109 08/06/2002 16:45:46.610 SEV=10 AUTHDECODE/7 RPT=2 Radius: Value (String) = 110 08/06/2002  
16:45:46.610 SEV=10 AUTHDECODE/0 RPT=8 0000: 3137312E 36392E38 392E3930 171.69.89.90 111  
08/06/2002 16:45:46.610 SEV=10 AUTHDECODE/5 RPT=6 Radius: Type = 26 (0x1A) Vendor-Specific 112  
08/06/2002 16:45:46.610 SEV=10 AUTHDECODE/6 RPT=6 Radius: Length = 24 (0x18) 113 08/06/2002  
16:45:46.610 SEV=10 AUTHDECODE/10 RPT=1 Radius: Vendor ID = 311 (0x00000137) 114 08/06/2002  
16:45:46.610 SEV=10 AUTHDECODE/5 RPT=7 Radius: Type = 11 (0x0B) MS-CHAP-Challenge 115 08/06/2002  
16:45:46.610 SEV=10 AUTHDECODE/6 RPT=7 Radius: Length = 18 (0x12) 116 08/06/2002 16:45:46.610  
SEV=10 AUTHDECODE/7 RPT=3 Radius: Value (String) = 117 08/06/2002 16:45:46.610 SEV=10  
AUTHDECODE/0 RPT=9 0000: BE14D10D A7ED8A00 FD2547B9 09563B19 .....%G..V;. 118 08/06/2002  
16:45:46.610 SEV=10 AUTHDECODE/5 RPT=8 Radius: Type = 26 (0x1A) Vendor-Specific 119 08/06/2002  
16:45:46.610 SEV=10 AUTHDECODE/6 RPT=8 Radius: Length = 58 (0x3A) 120 08/06/2002 16:45:46.610  
SEV=10 AUTHDECODE/10 RPT=2 Radius: Vendor ID = 311 (0x00000137) 121 08/06/2002 16:45:46.610  
SEV=10 AUTHDECODE/5 RPT=9 Radius: Type = 25 (0x19) MS-CHAP2-Response 122 08/06/2002 16:45:46.610  
SEV=10 AUTHDECODE/6 RPT=9 Radius: Length = 52 (0x34) 123 08/06/2002 16:45:46.610 SEV=10

AUTHDECODE/7 RPT=4 Radius: Value (String) = 124 08/06/2002 16:45:46.610 SEV=10 AUTHDECODE/0  
RPT=10 0000: 000062B6 A996DD49 62AE05FA 5AAFFDDA ..b....Ib...Z... 0010: 96A90000 00000000  
00003CA2 008EA03C .....<....< 0020: ABCF73FB 28E0D156 0A01D96A AE3BBFB6 ..s(..V...j;...  
0030: DD42 .B 128 08/06/2002 16:45:46.620 SEV=10 AUTHDECODE/5 RPT=10 Radius: Type = 4 (0x04)  
NAS-IP-Address 129 08/06/2002 16:45:46.620 SEV=10 AUTHDECODE/6 RPT=10 Radius: Length = 6 (0x06)  
130 08/06/2002 16:45:46.620 SEV=10 AUTHDECODE/9 RPT=1 Radius: Value (IP Address) = 172.16.172.36  
(0xAC10AC24) 131 08/06/2002 16:45:46.620 SEV=10 AUTHDECODE/5 RPT=11 Radius: Type = 61 (0x3D)  
NAS-Port-Type 132 08/06/2002 16:45:46.620 SEV=10 AUTHDECODE/6 RPT=11 Radius: Length = 6 (0x06)  
133 08/06/2002 16:45:46.620 SEV=10 AUTHDECODE/11 RPT=4 Radius: Value (Hex) = 0x5 134 08/06/2002  
16:45:46.620 SEV=8 AUTHDBG/28 RPT=64 Radius\_Xmt(9aa46fc) 135 08/06/2002 16:45:46.620 SEV=9  
AUTHDBG/71 RPT=303 xmit\_cnt = 1 136 08/06/2002 16:45:46.710 SEV=8 AUTHDBG/30 RPT=64  
Radius\_Match(9aa46fc, 5004a10), id = 0x22, rcvd = 0x22 **137 08/06/2002 16:45:46.710 SEV=8**  
**AUTHDBG/63 RPT=303 AUTH\_RcvReply(9aa46fc, 0, 0)** 138 08/06/2002 16:45:46.710 SEV=8 AUTHDBG/31  
RPT=128 Radius\_Decode(5004a10, 42) 139 08/06/2002 16:45:46.710 SEV=13 AUTHDECODE/0 RPT=11 0000:  
0322002A CCDF6607 AB8B6D51 9B17CFE1 ."\*.f...mQ.... 0010: 6A11AE2E 1A160000 01370210 00453D36  
j.....7...E=6 0020: 34382052 3D302056 3D33 48 R=0 V=3 142 08/06/2002 16:45:46.710 SEV=10  
AUTHDECODE/1 RPT=2 Radius: Code = 3 (0x03) 143 08/06/2002 16:45:46.710 SEV=10 AUTHDECODE/2 RPT=2  
Radius: Identifier = 34 (0x22) 144 08/06/2002 16:45:46.710 SEV=10 AUTHDECODE/3 RPT=2 Radius:  
Length = 42 (0x002A) 145 08/06/2002 16:45:46.710 SEV=10 AUTHDECODE/4 RPT=2 Radius: Vector: 146  
08/06/2002 16:45:46.710 SEV=10 AUTHDECODE/0 RPT=12 0000: CCDF6607 AB8B6D51 9B17CFE1 6A11AE2E  
..f...mQ....j... **147 08/06/2002 16:45:46.710 SEV=10 AUTHDECODE/5 RPT=12 Radius: Type = 26 (0x1A)**  
**Vendor-Specific** 148 08/06/2002 16:45:46.710 SEV=10 AUTHDECODE/6 RPT=12 Radius: Length = 22  
(0x16) 149 08/06/2002 16:45:46.710 SEV=10 AUTHDECODE/10 RPT=3 Radius: Vendor ID = 311  
(0x00000137) 150 08/06/2002 16:45:46.710 SEV=10 AUTHDECODE/5 RPT=13 Radius: Type = 2 (0x02) **MS-**  
**CHAP-Error** 151 08/06/2002 16:45:46.710 SEV=10 AUTHDECODE/6 RPT=13 Radius: Length = 16 (0x10) 152  
08/06/2002 16:45:46.710 SEV=10 AUTHDECODE/7 RPT=5 Radius: Value (String) = 153 08/06/2002  
16:45:46.710 SEV=10 AUTHDECODE/0 RPT=13 0000: 00453D36 34382052 3D302056 3D33 .E=648 R=0 V=3 154  
08/06/2002 16:45:46.710 SEV=8 AUTHDBG/29 RPT=64 Radius\_Rcv(9aa46fc) 155 08/06/2002 16:45:46.710  
SEV=8 AUTHDBG/66 RPT=303 AUTH\_DeleteTimer(9aa46fc, 0, 0) 156 08/06/2002 16:45:46.710 SEV=9  
AUTHDBG/74 RPT=303 Reply timer stopped: handle = 5A0E0016, timestamp = 355274567 157 08/06/2002  
16:45:46.710 SEV=8 AUTHDBG/58 RPT=303 AUTH\_Callback(9aa46fc, 0, 0) **158 08/06/2002 16:45:46.710**  
**SEV=3 AUTH/5 RPT=42 171.69.89.90 Authentication rejected: Reason = Password expired handle =**  
**103, server = 171.69.89.60, user = vpnuser1, domain = <not specified>** 160 08/06/2002  
16:45:46.710 SEV=8 AUTHDBG/4 RPT=289 AUTH\_GetAttrTable(103, 743aa8) 161 08/06/2002 16:45:46.710  
SEV=8 AUTHDBG/4 RPT=290 AUTH\_GetAttrTable(103, 743ad8) 162 08/06/2002 16:45:46.710 SEV=8  
AUTHDBG/60 RPT=303 AUTH\_UnbindServer(9aa46fc, 0, 0) 163 08/06/2002 16:45:46.710 SEV=9 AUTHDBG/70  
RPT=303 Auth Server 18cela4 has been unbound from ACB 9aa46fc, sessions = 0 164 08/06/2002  
16:45:50.480 SEV=8 AUTHDBG/3 RPT=304 AUTH\_PutAttrTable(103, 742898) 165 08/06/2002 16:45:50.480  
SEV=8 AUTHDBG/5 RPT=57 AUTH\_Authenticate(103, 500a278, 4cad38) 166 08/06/2002 16:45:50.480 SEV=8  
AUTHDBG/59 RPT=304 AUTH\_BindServer(9aa46fc, 0, 0) 167 08/06/2002 16:45:50.480 SEV=9 AUTHDBG/69  
RPT=304 Auth Server 18cela4 has been bound to ACB 9aa46fc, sessions = 1 168 08/06/2002  
16:45:50.480 SEV=8 AUTHDBG/65 RPT=304 AUTH\_CreateTimer(9aa46fc, 0, 0) 169 08/06/2002  
16:45:50.480 SEV=9 AUTHDBG/72 RPT=304 Reply timer created: handle = 5A100016 170 08/06/2002  
16:45:50.480 SEV=8 AUTHDBG/61 RPT=304 AUTH\_BuildMsg(9aa46fc, 0, 0) 171 08/06/2002 16:45:50.480  
SEV=8 AUTHDBG/27 RPT=65 Radius\_Build(9aa46fc) 172 08/06/2002 16:45:50.480 SEV=8 AUTHDBG/64  
RPT=304 AUTH\_StartTimer(9aa46fc, 0, 0) 173 08/06/2002 16:45:50.480 SEV=9 AUTHDBG/73 RPT=304  
Reply timer started: handle = 5A100016, timestamp = 355274944, timeout = 4000 174 08/06/2002  
16:45:50.480 SEV=8 AUTHDBG/62 RPT=304 AUTH\_SndRequest(9aa46fc, 0, 0) 175 08/06/2002 16:45:50.480  
SEV=8 AUTHDBG/31 RPT=129 Radius\_Decode(9a03ba8, 726) 176 08/06/2002 16:45:50.480 SEV=13  
AUTHDECODE/0 RPT=14 0000: 012302D6 E8317738 275469B7 A7D230C5 .#...lw8'Ti...0. 0010: 50CC8DE0  
010A7670 6E757365 72310506 P....vpnuser1.. 0020: 0000041C 06060000 00020706 00000001  
..... 0030: 420E3137 312E3639 2E38392E 39301AFF B.171.69.89.90.. 0040: 00000137  
06F90601 000164BF 9A72CBB1 ...7.....d..r.. 0050: FE1F1FFA 7D66A600 45BD9769 DD24BAAF  
....}f..E..i.\$.. 0060: D68FCDF2 BA9F9B2C FABE2BCC 0D66CF62 .....,...f.b 0070: 51F6E280  
F37502AD 53E5D6FB 7648C8D7 Q....u..S...vH.. 0080: 68CCC00F D1B186C8 7217E6DB 7E455DB4  
h.....r...~E]. 0090: EAB2FE0C 2F09C25A 359F4DCA FE15B816 ....Z5.M.... 00A0: 5B113D39  
1101444C B8E85BE4 7BDD367F [=9..DL..[.6. 00B0: 145D5786 38A3A8DC 8D07A029 911DC3D8  
.]W.8.....).... 188 08/06/2002 16:45:50.480 SEV=10 AUTHDECODE/1 RPT=3 Radius: Code = 1 (0x01)  
189 08/06/2002 16:45:50.480 SEV=10 AUTHDECODE/2 RPT=3 Radius: Identifier = 35 (0x23) 190  
08/06/2002 16:45:50.480 SEV=10 AUTHDECODE/3 RPT=3 Radius: Length = 726 (0x02D6) 191 08/06/2002  
16:45:50.480 SEV=10 AUTHDECODE/4 RPT=3 Radius: Vector: 192 08/06/2002 16:45:50.480 SEV=10  
AUTHDECODE/0 RPT=15 0000: E8317738 275469B7 A7D230C5 50CC8DE0 .lw8'Ti...0.P... 193 08/06/2002  
16:45:50.480 SEV=10 AUTHDECODE/5 RPT=14 Radius: Type = 1 (0x01) User-Name 194 08/06/2002  
16:45:50.480 SEV=10 AUTHDECODE/6 RPT=14 Radius: Length = 10 (0x0A) 195 08/06/2002 16:45:50.480

SEV=10 AUTHDECODE/7 RPT=6 Radius: Value (String) = 196 08/06/2002 16:45:50.480 SEV=10  
AUTHDECODE/0 RPT=16 0000: 76706E75 73657231 vpnuser1 197 08/06/2002 16:45:50.480 SEV=10  
AUTHDECODE/5 RPT=15 Radius: Type = 5 (0x05) NAS-Port 198 08/06/2002 16:45:50.480 SEV=10  
AUTHDECODE/6 RPT=15 Radius: Length = 6 (0x06) 199 08/06/2002 16:45:50.480 SEV=10 AUTHDECODE/11  
RPT=5 Radius: Value (Hex) = 0x41C 200 08/06/2002 16:45:50.480 SEV=10 AUTHDECODE/5 RPT=16 Radius:  
Type = 6 (0x06) Service-Type 201 08/06/2002 16:45:50.480 SEV=10 AUTHDECODE/6 RPT=16 Radius:  
Length = 6 (0x06) 202 08/06/2002 16:45:50.480 SEV=10 AUTHDECODE/11 RPT=6 Radius: Value (Hex) =  
0x2 203 08/06/2002 16:45:50.480 SEV=10 AUTHDECODE/5 RPT=17 Radius: Type = 7 (0x07) Framed-  
Protocol 204 08/06/2002 16:45:50.480 SEV=10 AUTHDECODE/6 RPT=17 Radius: Length = 6 (0x06) 205  
08/06/2002 16:45:50.480 SEV=10 AUTHDECODE/11 RPT=7 Radius: Value (Hex) = 0x1 206 08/06/2002  
16:45:50.480 SEV=10 AUTHDECODE/5 RPT=18 Radius: Type = 66 (0x42) Tunnel-Client-Endpoint 207  
08/06/2002 16:45:50.480 SEV=10 AUTHDECODE/6 RPT=18 Radius: Length = 14 (0x0E) 208 08/06/2002  
16:45:50.480 SEV=10 AUTHDECODE/7 RPT=7 Radius: Value (String) = 209 08/06/2002 16:45:50.480  
SEV=10 AUTHDECODE/0 RPT=17 0000: 3137312E 36392E38 392E3930 171.69.89.90 210 08/06/2002  
16:45:50.480 SEV=10 AUTHDECODE/5 RPT=19 Radius: Type = 26 (0x1A) Vendor-Specific 211 08/06/2002  
16:45:50.480 SEV=10 AUTHDECODE/6 RPT=19 Radius: Length = 255 (0xFF) 212 08/06/2002 16:45:50.480  
SEV=10 AUTHDECODE/10 RPT=4 Radius: Vendor ID = 311 (0x00000137) 213 08/06/2002 16:45:50.480  
SEV=10 AUTHDECODE/5 RPT=20 Radius: Type = 6 (0x06) MS-CHAP-NT-Enc-PW 214 08/06/2002 16:45:50.480  
SEV=10 AUTHDECODE/6 RPT=20 Radius: Length = 249 (0xF9) 215 08/06/2002 16:45:50.480 SEV=10  
AUTHDECODE/7 RPT=8 Radius: Value (String) = 216 08/06/2002 16:45:50.480 SEV=10 AUTHDECODE/0  
RPT=18 0000: 06010001 64BF9A72 CBB1FE1F 1FFA7D66 ....d.r.....}f 0010: A60045BD 9769DD24  
BAAF68F CDF2BA9F ..E..i.\$..... 0020: 9B2CFABE 2BCC0D66 CF6251F6 E280F375 ...+..f.bQ....u  
0030: 02AD53E5 D6FB7648 C8D768CC C00FD1B1 ..S...vH..h.... 0040: 86C87217 E6DB7E45 5DB4EAB2  
FE0C2F09 ..r...~E]...../. 0050: C25A359F 4DCAFE15 B8165B11 3D391101 .Z5.M.....[.=9.. 0060:  
444CB8E8 5BE47BDD 367F145D 578638A3 DL..[.{.6..]W.8. 0070: A8DC8D07 A029911D C3D839D6 12880394  
.....)....9..... 0080: BFCB86DA F5DE706B 616FA285 6B0F2312 .....pkao..k.#. 0090: 5BA566D2  
153D9A88 D970EAA7 EEAE2453 [.f...=...p....\$S 00A0: DC28ECC7 C0B4F4C4 8BF04712 D68F3FCA  
.(.....G...?. 00B0: 89F11100 3FA76070 2EE793E9 4EE10B7C ....?.`p....N..| 228 08/06/2002  
16:45:50.480 SEV=10 AUTHDECODE/5 RPT=21 Radius: Type = 26 (0x1A) Vendor-Specific 229 08/06/2002  
16:45:50.480 SEV=10 AUTHDECODE/6 RPT=21 Radius: Length = 255 (0xFF) 230 08/06/2002 16:45:50.480  
SEV=10 AUTHDECODE/10 RPT=5 Radius: Vendor ID = 311 (0x00000137) 231 08/06/2002 16:45:50.480  
SEV=10 AUTHDECODE/5 RPT=22 Radius: Type = 6 (0x06) MS-CHAP-NT-Enc-PW 232 08/06/2002 16:45:50.480  
SEV=10 AUTHDECODE/6 RPT=22 Radius: Length = 249 (0xF9) 233 08/06/2002 16:45:50.480 SEV=10  
AUTHDECODE/7 RPT=9 Radius: Value (String) = 234 08/06/2002 16:45:50.480 SEV=10 AUTHDECODE/0  
RPT=19 0000: 06010002 424D1964 E0FCDA8 DE020FCF ...BM.d..... 0010: 141848C6 3080EE8C  
098DCB0E C5FD7AD0 ..H.0.....z. 0020: 771E909B 78C84AA0 89CEAA5E D2727D24 w...x.J....^r}\$  
0030: 67D195F9 85F8602E AAB5548 D0F29B5E g.....`...UH...^ 0040: E16380AF 941D7DC0 BD842962  
5673BDBD .c....})bvS.. 0050: E8818EBE 271C7B4F 9E52A02F 8A6AAA8E ....'.{O.R./..j.. 0060:  
D3E142B7 C60FDCE9 AECC4F81 7B926351 ..B.....O.{.cQ 0070: 375530C5 F8BFD23C 5E737129 4164C119  
7U0....<^sq)Ad.. 0080: 4BF7C116 4EB4F82C 5FC2639E 2EAB8DD9 K...N...,\_c..... 0090: 8DD129AC  
84B21D0F 96E11B94 BBB78214 ..)..... 00A0: B2CED1D2 1758E20C 8462F884 26C3292E  
.....X...b..&.). 00B0: D4BAC7F6 7812C981 B5309BE5 509877E5 ....x....0..P.w. 246 08/06/2002  
16:45:50.480 SEV=10 AUTHDECODE/5 RPT=23 Radius: Type = 26 (0x1A) Vendor-Specific 247 08/06/2002  
16:45:50.480 SEV=10 AUTHDECODE/6 RPT=23 Radius: Length = 42 (0x2A) 248 08/06/2002 16:45:50.480  
SEV=10 AUTHDECODE/10 RPT=6 Radius: Vendor ID = 311 (0x00000137) 249 08/06/2002 16:45:50.480  
SEV=10 AUTHDECODE/5 RPT=24 Radius: Type = 6 (0x06) MS-CHAP-NT-Enc-PW 250 08/06/2002 16:45:50.480  
SEV=10 AUTHDECODE/6 RPT=24 Radius: Length = 36 (0x24) 251 08/06/2002 16:45:50.480 SEV=10  
AUTHDECODE/7 RPT=10 Radius: Value (String) = 252 08/06/2002 16:45:50.480 SEV=10 AUTHDECODE/0  
RPT=20 0000: 06010003 47FD5D0E 1840AC0A F345102C ...G.]..@...E., 0010: ED6971DC 1F5CB1D7  
609C5101 4724A804 .iq..\\..`Q.G\$. 0020: 9B9C .. 255 08/06/2002 16:45:50.480 SEV=10 AUTHDECODE/5  
RPT=25 Radius: Type = 26 (0x1A) Vendor-Specific 256 08/06/2002 16:45:50.480 SEV=10 AUTHDECODE/6  
RPT=25 Radius: Length = 24 (0x18) 257 08/06/2002 16:45:50.480 SEV=10 AUTHDECODE/10 RPT=7 Radius:  
Vendor ID = 311 (0x00000137) 258 08/06/2002 16:45:50.480 SEV=10 AUTHDECODE/5 RPT=26 Radius: Type  
= 11 (0x0B) MS-CHAP-Challenge 259 08/06/2002 16:45:50.480 SEV=10 AUTHDECODE/6 RPT=26 Radius:  
Length = 18 (0x12) 260 08/06/2002 16:45:50.480 SEV=10 AUTHDECODE/7 RPT=11 Radius: Value (String)  
= 261 08/06/2002 16:45:50.480 SEV=10 AUTHDECODE/0 RPT=21 0000: A7129F8C 8F87FA68 3D3D0A73  
E70E3AB0 .....h==.s... 262 08/06/2002 16:45:50.480 SEV=10 AUTHDECODE/5 RPT=27 Radius: Type =  
26 (0x1A) Vendor-Specific 263 08/06/2002 16:45:50.480 SEV=10 AUTHDECODE/6 RPT=27 Radius: Length  
= 76 (0x4C) 264 08/06/2002 16:45:50.480 SEV=10 AUTHDECODE/10 RPT=8 Radius: Vendor ID = 311  
(0x00000137) 265 08/06/2002 16:45:50.480 SEV=10 AUTHDECODE/5 RPT=28 Radius: Type = 27 (0x1B) MS-  
CHAP2-CPW 266 08/06/2002 16:45:50.480 SEV=10 AUTHDECODE/6 RPT=28 Radius: Length = 70 (0x46) 267  
08/06/2002 16:45:50.480 SEV=10 AUTHDECODE/7 RPT=12 Radius: Value (String) = 268 08/06/2002  
16:45:50.480 SEV=10 AUTHDECODE/0 RPT=22 0000: 07014E5D FC26F8E9 2F90A59B C04963DA  
..N].&../....Ic. 0010: 048662B6 A996DD49 62AE05FA 5AAFFDDA ..b....Ib...Z... 0020: 96A90000

00000000 0000EF4A 06BB0405 .....J.... 0030: A003F44A F8B81E05 B22506A4 6259979C  
...J.....%.bY.. 0040: 5F510000 \_Q.. 273 08/06/2002 16:45:50.480 SEV=10 AUTHDECODE/5 RPT=29  
Radius: Type = 4 (0x04) NAS-IP-Address 274 08/06/2002 16:45:50.480 SEV=10 AUTHDECODE/6 RPT=29  
Radius: Length = 6 (0x06) 275 08/06/2002 16:45:50.490 SEV=10 AUTHDECODE/9 RPT=2 Radius: Value  
(IP Address) = 172.16.172.36 (0xAC10AC24) 276 08/06/2002 16:45:50.490 SEV=10 AUTHDECODE/5 RPT=30  
Radius: Type = 61 (0x3D) NAS-Port-Type 277 08/06/2002 16:45:50.490 SEV=10 AUTHDECODE/6 RPT=30  
Radius: Length = 6 (0x06) 278 08/06/2002 16:45:50.490 SEV=10 AUTHDECODE/11 RPT=8 Radius: Value  
(Hex) = 0x5 279 08/06/2002 16:45:50.490 SEV=8 AUTHDBG/28 RPT=65 Radius\_Xmt(9aa46fc) 280  
08/06/2002 16:45:50.490 SEV=9 AUTHDBG/71 RPT=304 xmit\_cnt = 1 281 08/06/2002 16:45:50.680 SEV=8  
AUTHDBG/30 RPT=65 Radius\_Match(9aa46fc, 71e7df4), id = 0x23, rcvd = 0x23 **282 08/06/2002**  
**16:45:50.680 SEV=8 AUTHDBG/63 RPT=304 AUTH\_RcvReply(9aa46fc, 0, 0)** 283 08/06/2002 16:45:50.680  
SEV=8 AUTHDBG/31 RPT=130 Radius\_Decode(71e7df4, 213) 284 08/06/2002 16:45:50.680 SEV=13  
AUTHDECODE/0 RPT=23 0000: 022300D5 EF3B5E72 2E31AF7C 7D305207 .#...;^r.1.|}OR. 0010: 27ADA143  
07060000 00010606 00000002 '.C..... 0020: 19204920 05160000 01370001 AB45593C . I  
.....7...EY< 0030: 01C2037B 9CB17432 00000000 00000023 ...{.t2.....# 0040: 1A2A0000 01371124  
80293506 D58538BE .\*...7.\$.)5...8. 0050: 93D9BB03 17133616 C55D4C6F CE5D8848 .....6..]Lo.].H  
0060: 82BAB54B DF490416 84271A2A 00000137 ...K.I...'.\*...7 0070: 1024802A F7F3D930 56008345  
580C49D5 .\$.\*...OV..EX.I. 0080: 414E8B6F 4FABD2EB 65A99BB3 2032E3DB AN.oO...e... 2.. 0090:  
792C0750 1A330000 01371A2D 01533D33 y,.P.3...7.-.S=3 00A0: 37333630 41343233 44384145 42423132  
7360A423D8AEBB12 00B0: 33324239 36413545 36433741 45443938 32B96A5E6C7AED98 296 08/06/2002  
16:45:50.680 SEV=10 AUTHDECODE/1 RPT=4 Radius: Code = 2 (0x02) 297 08/06/2002 16:45:50.680  
SEV=10 AUTHDECODE/2 RPT=4 Radius: Identifier = 35 (0x23) 298 08/06/2002 16:45:50.680 SEV=10  
AUTHDECODE/3 RPT=4 Radius: Length = 213 (0x00D5) 299 08/06/2002 16:45:50.680 SEV=10 AUTHDECODE/4  
RPT=4 Radius: Vector: 300 08/06/2002 16:45:50.680 SEV=10 AUTHDECODE/0 RPT=24 0000: EF3B5E72  
2E31AF7C 7D305207 27ADA143 .;^r.1.|}OR.'.C 301 08/06/2002 16:45:50.680 SEV=10 AUTHDECODE/5  
RPT=31 Radius: Type = 7 (0x07) Framed-Protocol 302 08/06/2002 16:45:50.680 SEV=10 AUTHDECODE/6  
RPT=31 Radius: Length = 6 (0x06) 303 08/06/2002 16:45:50.680 SEV=10 AUTHDECODE/11 RPT=9 Radius:  
Value (Hex) = 0x1 304 08/06/2002 16:45:50.680 SEV=10 AUTHDECODE/5 RPT=32 Radius: Type = 6 (0x06)  
Service-Type 305 08/06/2002 16:45:50.680 SEV=10 AUTHDECODE/6 RPT=32 Radius: Length = 6 (0x06)  
306 08/06/2002 16:45:50.680 SEV=10 AUTHDECODE/11 RPT=10 Radius: Value (Hex) = 0x2 307 08/06/2002  
16:45:50.680 SEV=10 AUTHDECODE/5 RPT=33 Radius: Type = 25 (0x19) Class 308 08/06/2002  
16:45:50.680 SEV=10 AUTHDECODE/6 RPT=33 Radius: Length = 32 (0x20) 309 08/06/2002 16:45:50.680  
SEV=10 AUTHDECODE/7 RPT=13 Radius: Value (String) = 310 08/06/2002 16:45:50.680 SEV=10  
AUTHDECODE/0 RPT=25 0000: 49200516 00000137 0001AB45 593C01C2 I .....7...EY<.. 0010: 037B9CB1  
74320000 00000000 0023 .{.t2.....# 312 08/06/2002 16:45:50.680 SEV=10 AUTHDECODE/5 RPT=34  
Radius: Type = 26 (0x1A) Vendor-Specific 313 08/06/2002 16:45:50.680 SEV=10 AUTHDECODE/6 RPT=34  
Radius: Length = 42 (0x2A) 314 08/06/2002 16:45:50.680 SEV=10 AUTHDECODE/10 RPT=9 Radius: Vendor  
ID = 311 (0x00000137) 315 08/06/2002 16:45:50.680 SEV=10 AUTHDECODE/5 RPT=35 Radius: Type = 17  
(0x11) MS-MPPE-Recv-Key 316 08/06/2002 16:45:50.680 SEV=10 AUTHDECODE/6 RPT=35 Radius: Length =  
36 (0x24) 317 08/06/2002 16:45:50.680 SEV=10 AUTHDECODE/7 RPT=14 Radius: Value (String) = 318  
08/06/2002 16:45:50.680 SEV=10 AUTHDECODE/0 RPT=26 0000: 80293506 D58538BE 93D9BB03 17133616  
)5...8.....6. 0010: C55D4C6F CE5D8848 82BAB54B DF490416 .]Lo.].H...K.I.. 0020: 8427 .' 321  
08/06/2002 16:45:50.680 SEV=10 AUTHDECODE/5 RPT=36 Radius: Type = 26 (0x1A) Vendor-Specific 322  
08/06/2002 16:45:50.680 SEV=10 AUTHDECODE/6 RPT=36 Radius: Length = 42 (0x2A) 323 08/06/2002  
16:45:50.680 SEV=10 AUTHDECODE/10 RPT=10 Radius: Vendor ID = 311 (0x00000137) 324 08/06/2002  
16:45:50.680 SEV=10 AUTHDECODE/5 RPT=37 Radius: Type = 16 (0x10) MS-MPPE-Send-Key 325 08/06/2002  
16:45:50.680 SEV=10 AUTHDECODE/6 RPT=37 Radius: Length = 36 (0x24) 326 08/06/2002 16:45:50.680  
SEV=10 AUTHDECODE/7 RPT=15 Radius: Value (String) = 327 08/06/2002 16:45:50.680 SEV=10  
AUTHDECODE/0 RPT=27 0000: 802AF7F3 D9305600 8345580C 49D5414E .\*...OV..EX.I.AN 0010: 8B6F4FAB  
D2EB65A9 9BB32032 E3DB792C .oO...e... 2..y, 0020: 0750 .P 330 08/06/2002 16:45:50.680 SEV=10  
AUTHDECODE/5 RPT=38 Radius: Type = 26 (0x1A) Vendor-Specific 331 08/06/2002 16:45:50.680 SEV=10  
AUTHDECODE/6 RPT=38 Radius: Length = 51 (0x33) **332 08/06/2002 16:45:50.680 SEV=10 AUTHDECODE/10**  
**RPT=11 Radius: Vendor ID = 311 (0x00000137) 333 08/06/2002 16:45:50.680 SEV=10 AUTHDECODE/5**  
**RPT=39 Radius: Type = 26 (0x1A) MS-CHAP2-Success** 334 08/06/2002 16:45:50.680 SEV=10 AUTHDECODE/6  
RPT=39 Radius: Length = 45 (0x2D) 335 08/06/2002 16:45:50.680 SEV=10 AUTHDECODE/7 RPT=16 Radius:  
Value (String) = 336 08/06/2002 16:45:50.680 SEV=10 AUTHDECODE/0 RPT=28 0000: 01533D33 37333630  
41343233 44384145 .S=37360A423D8AE 0010: 42423132 33324239 36413545 36433741 BB1232B96A5E6C7A  
0020: 45443938 45313841 453032 ED98E18AE02 339 08/06/2002 16:45:50.680 SEV=10 AUTHDECODE/5  
RPT=40 Radius: Type = 26 (0x1A) Vendor-Specific 340 08/06/2002 16:45:50.680 SEV=10 AUTHDECODE/6  
RPT=40 Radius: Length = 14 (0x0E) 341 08/06/2002 16:45:50.680 SEV=10 AUTHDECODE/10 RPT=12  
Radius: Vendor ID = 311 (0x00000137) 342 08/06/2002 16:45:50.680 SEV=10 AUTHDECODE/5 RPT=41  
Radius: Type = 10 (0x0A) Unknown 343 08/06/2002 16:45:50.680 SEV=10 AUTHDECODE/6 RPT=41 Radius:  
Length = 8 (0x08) 344 08/06/2002 16:45:50.680 SEV=8 AUTHDBG/29 RPT=65 Radius\_Rcv(9aa46fc) 345  
08/06/2002 16:45:50.680 SEV=9 AUTHDBG/32 RPT=8 Radius: Discarding unknown Vendor Specific



Attribute: vid = 311, type = 10 346 08/06/2002 16:45:50.680 SEV=8 AUTHDBG/66 RPT=304  
AUTH\_DeleteTimer(9aa46fc, 0, 0) 347 08/06/2002 16:45:50.680 SEV=9 AUTHDBG/74 RPT=304 Reply timer  
stopped: handle = 5A100016, timestamp = 355274964 348 08/06/2002 16:45:50.680 SEV=8 AUTHDBG/58  
RPT=304 AUTH\_Callback(9aa46fc, 0, 0) **349 08/06/2002 16:45:50.680 SEV=6 AUTH/4 RPT=18**  
**171.69.89.90 Authentication successful: handle = 103, server = 171.69.89.60, user = vpnuser1** 350  
08/06/2002 16:45:50.680 SEV=8 AUTHDBG/3 RPT=305 AUTH\_PutAttrTable(103, 19bfc54) 351 08/06/2002  
16:45:50.680 SEV=8 AUTHDBG/60 RPT=304 AUTH\_UnbindServer(9aa46fc, 0, 0) 352 08/06/2002  
16:45:50.680 SEV=9 AUTHDBG/70 RPT=304 Auth Server 18cela4 has been unbound from ACB 9aa46fc,  
sessions = 0 353 08/06/2002 16:45:50.680 SEV=8 AUTHDBG/59 RPT=305 AUTH\_BindServer(9aa46fc, 0, 0)  
354 08/06/2002 16:45:50.680 SEV=9 AUTHDBG/69 RPT=305 Auth Server 18cdfa4 has been bound to ACB  
9aa46fc, sessions = 1 355 08/06/2002 16:45:50.680 SEV=8 AUTHDBG/65 RPT=305  
AUTH\_CreateTimer(9aa46fc, 0, 0) 356 08/06/2002 16:45:50.680 SEV=9 AUTHDBG/72 RPT=305 Reply timer  
created: handle = 5A110016 357 08/06/2002 16:45:50.680 SEV=8 AUTHDBG/61 RPT=305>  
AUTH\_BuildMsg(9aa46fc, 0, 0)> 358 08/06/2002 16:45:50.680 SEV=8 AUTHDBG/64 RPT=305  
AUTH\_StartTimer(9aa46fc, 0, 0) 359 08/06/2002 16:45:50.680 SEV=9 AUTHDBG/73 RPT=305 Reply timer  
started: handle = 5A110016, timestamp = 355274964, timeout = 30000 360 08/06/2002 16:45:50.680  
SEV=8 AUTHDBG/62 RPT=305 AUTH\_SndRequest(9aa46fc, 0, 0)> 361 08/06/2002 16:45:50.680 SEV=8  
AUTHDBG/50 RPT=479 IntDB\_Decode(2ea1004, 57) 362 08/06/2002 16:45:50.680 SEV=10 AUTHDECODE/12  
RPT=11 IntDB: Type = 1 (0x01) User-Name 363 08/06/2002 16:45:50.680 SEV=10 AUTHDECODE/13 RPT=11  
IntDB: Length = 11 (0x0B) 364 08/06/2002 16:45:50.680 SEV=10 AUTHDECODE/14 RPT=5 IntDB: Value  
(String) = 365 08/06/2002 16:45:50.680 SEV=10 AUTHDECODE/0 RPT=29 0000: 77696E64 6F777375 736572  
windowsuser 366 08/06/2002 16:45:50.680 SEV=8 AUTHDBG/47 RPT=479 IntDB\_Xmt(9aa46fc) 367  
08/06/2002 16:45:50.680 SEV=9 AUTHDBG/71 RPT=305 xmit\_cnt = 1 368 08/06/2002 16:45:50.680 SEV=8  
AUTHDBG/47 RPT=480 IntDB\_Xmt(9aa46fc) 369 08/06/2002 16:45:50.780 SEV=8 AUTHDBG/49 RPT=240  
IntDB\_Match(9aa46fc, 62f1c4c) 370 08/06/2002 16:45:50.780 SEV=8 AUTHDBG/63 RPT=305  
AUTH\_RcvReply(9aa46fc, 0, 0) 371 08/06/2002 16:45:50.780 SEV=8 AUTHDBG/50 RPT=480  
IntDB\_Decode(62f1c4c, 170) 372 08/06/2002 16:45:50.780 SEV=10 AUTHDECODE/12 RPT=12 IntDB: Type =  
1 (0x01) User-Name 373 08/06/2002 16:45:50.780 SEV=10 AUTHDECODE/13 RPT=12 IntDB: Length = 11  
(0x0B) 374 08/06/2002 16:45:50.780 SEV=10 AUTHDECODE/14 RPT=6 IntDB: Value (String) = 375  
08/06/2002 16:45:50.780 SEV=10 AUTHDECODE/0 RPT=30 0000: 77696E64 6F777375 736572 windowsuser  
376 08/06/2002 16:45:50.780 SEV=10 AUTHDECODE/12 RPT=13 IntDB: Type = 4109 (0x100D) IPsec-  
Authentication 377 08/06/2002 16:45:50.780 SEV=10 AUTHDECODE/13 RPT=13 IntDB: Length = 4 (0x04)  
378 08/06/2002 16:45:50.780 SEV=10 AUTHDECODE/15 RPT=7 IntDB: Value (Integer) = 6 (0x0006) 379  
08/06/2002 16:45:50.780 SEV=10 AUTHDECODE/12 RPT=14 IntDB: Type = 4123 (0x101B) Split-Tunnel-  
Inclusion-List 380 08/06/2002 16:45:50.780 SEV=10 AUTHDECODE/13 RPT=14 IntDB: Length = 4 (0x04)  
381 08/06/2002 16:45:50.780 SEV=10 AUTHDECODE/14 RPT=7 IntDB: Value (String) = 382 08/06/2002  
16:45:50.780 SEV=10 AUTHDECODE/0 RPT=31 0000: 74657374 test 383 08/06/2002 16:45:50.780 SEV=10  
AUTHDECODE/12 RPT=15 IntDB: Type = 4151 (0x1037) Split-Tunneling-Policy 384 08/06/2002  
16:45:50.780 SEV=10 AUTHDECODE/13 RPT=15 IntDB: Length = 4 (0x04) 385 08/06/2002 16:45:50.780  
SEV=10 AUTHDECODE/15 RPT=8 IntDB: Value (Integer) = 1 (0x0001) 386 08/06/2002 16:45:50.780 SEV=8  
AUTHDBG/48 RPT=240 IntDB\_Rcv(9aa46fc) 387 08/06/2002 16:45:50.780 SEV=8 AUTHDBG/66 RPT=305  
AUTH\_DeleteTimer(9aa46fc, 0, 0) 388 08/06/2002 16:45:50.780 SEV=9 AUTHDBG/74 RPT=305 Reply timer  
stopped: handle = 5A110016, timestamp = 355274974 389 08/06/2002 16:45:50.780 SEV=8 AUTHDBG/58  
RPT=305 AUTH\_Callback(9aa46fc, 0, 0) 390 08/06/2002 16:45:50.780 SEV=6 AUTH/41 RPT=219  
171.69.89.90 Authentication successful: handle = 103, server = Internal, group = windowsuser 391  
08/06/2002 16:45:50.780 SEV=8 AUTHDBG/3 RPT=306 AUTH\_PutAttrTable(103, 19bfc54) 392 08/06/2002  
16:45:50.780 SEV=8 AUTHDBG/60 RPT=305 AUTH\_UnbindServer(9aa46fc, 0, 0) 393 08/06/2002  
16:45:50.780 SEV=9 AUTHDBG/70 RPT=305 Auth Server 18cdfa4 has been unbound from ACB 9aa46fc,  
sessions = 0 394 08/06/2002 16:45:50.780 SEV=8 AUTHDBG/59 RPT=306 AUTH\_BindServer(9aa46fc, 0, 0)  
395 08/06/2002 16:45:50.780 SEV=9 AUTHDBG/69 RPT=306 Auth Server 18cdfa4 has been bound to ACB  
9aa46fc, sessions = 1 396 08/06/2002 16:45:50.780 SEV=8 AUTHDBG/65 RPT=306  
AUTH\_CreateTimer(9aa46fc, 0, 0) 397 08/06/2002 16:45:50.780 SEV=9 AUTHDBG/72 RPT=306 Reply timer  
created: handle = 5A120016 398 08/06/2002 16:45:50.780 SEV=8 AUTHDBG/61 RPT=306  
AUTH\_BuildMsg(9aa46fc, 0, 0) 399 08/06/2002 16:45:50.780 SEV=8 AUTHDBG/64 RPT=306  
AUTH\_StartTimer(9aa46fc, 0, 0) 400 08/06/2002 16:45:50.780 SEV=9 AUTHDBG/73 RPT=306 Reply timer  
started: handle = 5A120016, timestamp = 355274974, timeout = 30000 401 08/06/2002 16:45:50.780  
SEV=8 AUTHDBG/62 RPT=306 AUTH\_SndRequest(9aa46fc, 0, 0) 402 08/06/2002 16:45:50.780 SEV=8  
AUTHDBG/50 RPT=481 IntDB\_Decode(2e8aa34, 57) 403 08/06/2002 16:45:50.780 SEV=10 AUTHDECODE/12  
RPT=16 IntDB: Type = 1 (0x01) User-Name 404 08/06/2002 16:45:50.780 SEV=10 AUTHDECODE/13 RPT=16  
IntDB: Length = 11 (0x0B) 405 08/06/2002 16:45:50.780 SEV=10 AUTHDECODE/14 RPT=8 IntDB: Value  
(String) = 406 08/06/2002 16:45:50.780 SEV=10 AUTHDECODE/0 RPT=32 0000: 77696E64 6F777375 736572  
windowsuser 407 08/06/2002 16:45:50.780 SEV=8 AUTHDBG/47 RPT=481 IntDB\_Xmt(9aa46fc) 408  
08/06/2002 16:45:50.780 SEV=9 AUTHDBG/71 RPT=306 xmit\_cnt = 1 409 08/06/2002 16:45:50.780 SEV=8  
AUTHDBG/47 RPT=482 IntDB\_Xmt(9aa46fc) 410 08/06/2002 16:45:50.880 SEV=8 AUTHDBG/49 RPT=241

IntDB\_Match(9aa46fc, 62fd1a8) 411 08/06/2002 16:45:50.880 SEV=8 AUTHDBG/63 RPT=306  
AUTH\_RcvReply(9aa46fc, 0, 0) 412 08/06/2002 16:45:50.880 SEV=8 AUTHDBG/50 RPT=482  
IntDB\_Decode(62fd1a8, 170) 413 08/06/2002 16:45:50.880 SEV=10 AUTHDECODE/12 RPT=17 IntDB: Type =  
1 (0x01) User-Name 414 08/06/2002 16:45:50.880 SEV=10 AUTHDECODE/13 RPT=17 IntDB: Length = 11  
(0x0B) 415 08/06/2002 16:45:50.880 SEV=10 AUTHDECODE/14 RPT=9 IntDB: Value (String) = 416  
08/06/2002 16:45:50.880 SEV=10 AUTHDECODE/0 RPT=33 0000: 77696E64 6F777375 736572 windowsuser  
417 08/06/2002 16:45:50.880 SEV=10 AUTHDECODE/12 RPT=18 IntDB: Type = 4109 (0x100D) IPsec-  
Authentication 418 08/06/2002 16:45:50.880 SEV=10 AUTHDECODE/13 RPT=18 IntDB: Length = 4 (0x04)  
419 08/06/2002 16:45:50.880 SEV=10 AUTHDECODE/15 RPT=9 IntDB: Value (Integer) = 6 (0x0006) 420  
08/06/2002 16:45:50.880 SEV=10 AUTHDECODE/12 RPT=19 IntDB: Type = 4123 (0x101B) Split-Tunnel-  
Inclusion-List 421 08/06/2002 16:45:50.880 SEV=10 AUTHDECODE/13 RPT=19 IntDB: Length = 4 (0x04)  
422 08/06/2002 16:45:50.880 SEV=10 AUTHDECODE/14 RPT=10 IntDB: Value (String) = 423 08/06/2002  
16:45:50.880 SEV=10 AUTHDECODE/0 RPT=34 0000: 74657374 test 424 08/06/2002 16:45:50.880 SEV=10  
AUTHDECODE/12 RPT=20 IntDB: Type = 4151 (0x1037) Split-Tunneling-Policy 425 08/06/2002  
16:45:50.880 SEV=10 AUTHDECODE/13 RPT=20 IntDB: Length = 4 (0x04) 426 08/06/2002 16:45:50.880  
SEV=10 AUTHDECODE/15 RPT=10 IntDB: Value (Integer) = 1 (0x0001) 427 08/06/2002 16:45:50.880  
SEV=8 AUTHDBG/48 RPT=241 IntDB\_Rcv(9aa46fc) 428 08/06/2002 16:45:50.880 SEV=8 AUTHDBG/66 RPT=306  
AUTH\_DeleteTimer(9aa46fc, 0, 0) 429 08/06/2002 16:45:50.880 SEV=9 AUTHDBG/74 RPT=306 Reply timer  
stopped: handle = 5A120016, timestamp = 355274984 430 08/06/2002 16:45:50.880 SEV=8 AUTHDBG/58  
RPT=306 AUTH\_Callback(9aa46fc, 0, 0) 431 08/06/2002 16:45:50.880 SEV=6 AUTH/41 RPT=220  
171.69.89.90 Authentication successful: handle = 103, server = Internal, group = windowsuser 432  
08/06/2002 16:45:50.880 SEV=8 AUTHDBG/4 RPT=291 AUTH\_GetAttrTable(103, 743aa8) 433 08/06/2002  
16:45:50.880 SEV=8 AUTHDBG/4 RPT=292 AUTH\_GetAttrTable(103, 743ad8) 434 08/06/2002 16:45:50.880  
SEV=8 AUTHDBG/4 RPT=293 AUTH\_GetAttrTable(103, 742a30) 435 08/06/2002 16:45:50.880 SEV=8  
AUTHDBG/2 RPT=264 AUTH\_Close(103) 436 08/06/2002 16:45:50.880 SEV=4 IKE/52 RPT=19 171.69.89.90  
Group [windowsuser] User [vpnuser1] User (vpnuser1) authenticated. 437 08/06/2002 16:45:50.880  
SEV=8 AUTHDBG/60 RPT=306 AUTH\_UnbindServer(9aa46fc, 0, 0) 438 08/06/2002 16:45:50.880 SEV=9  
AUTHDBG/70 RPT=306 Auth Server 18cdfa4 has been unbound from ACB 9aa46fc, sessions = 0 439  
08/06/2002 16:45:50.880 SEV=8 AUTHDBG/10 RPT=264 AUTH\_Int\_FreeAuthCB(9aa46fc) 440 08/06/2002  
16:45:50.880 SEV=7 AUTH/13 RPT=265 Authentication session closed: handle = 103 441 08/06/2002  
16:45:50.900 SEV=6 IKE/130 RPT=30 171.69.89.90 Group [windowsuser] User [vpnuser1] Received  
unsupported transaction mode attribute: 5 443 08/06/2002 16:45:50.930 SEV=4 AUTH/22 RPT=286 User  
vpnuser1 connected 444 08/06/2002 16:45:50.930 SEV=4 IKE/119 RPT=23 171.69.89.90 Group  
[windowsuser] User [vpnuser1] PHASE 1 COMPLETED 445 08/06/2002 16:45:50.930 SEV=6 IKE/121 RPT=23  
171.69.89.90 Keep-alive type for this connection: DPD 446 08/06/2002 16:45:50.930 SEV=5 IKE/25  
RPT=27 171.69.89.90 Group [windowsuser] User [vpnuser1] Received remote Proxy Host data in ID  
Payload: Address 10.10.10.1, Protocol 0, Port 0 449 08/06/2002 16:45:50.930 SEV=5 IKE/24 RPT=23  
171.69.89.90 Group [windowsuser] User [vpnuser1] Received local Proxy Host data in ID Payload:  
Address 172.16.172.36, Protocol 0, Port 0 452 08/06/2002 16:45:50.930 SEV=5 IKE/66 RPT=27  
171.69.89.90 Group [windowsuser] User [vpnuser1] IKE Remote Peer configured for SA: ESP-3DES-MD5  
454 08/06/2002 16:45:50.930 SEV=5 IKE/75 RPT=27 171.69.89.90 Group [windowsuser] User [vpnuser1]  
Overriding Initiator's IPsec rekeying duration from 2147483 to 28800 seconds 456 08/06/2002  
16:45:50.940 SEV=4 IKE/49 RPT=27 171.69.89.90 Group [windowsuser] User [vpnuser1] Security  
negotiation complete for User (vpnuser1) Responder, Inbound SPI = 0x36291f3d, Outbound SPI =  
0x07345e3e 459 08/06/2002 16:45:50.940 SEV=8 AUTHDBG/1 RPT=265 AUTH\_Open() returns 104 460  
08/06/2002 16:45:50.940 SEV=7 AUTH/12 RPT=266 Authentication session opened: handle = 104 461  
08/06/2002 16:45:50.940 SEV=8 AUTHDBG/3 RPT=307 AUTH\_PutAttrTable(104, 1b3b748) 462 08/06/2002  
16:45:50.940 SEV=8 AUTHDBG/7 RPT=31 AUTH\_Accounting(104, 0, 0) 463 08/06/2002 16:45:50.940 SEV=4  
IKE/120 RPT=27 171.69.89.90 Group [windowsuser] User [vpnuser1] PHASE 2 COMPLETED  
(msgid=ed3c1f7c) 464 08/06/2002 16:45:50.940 SEV=8 AUTHDBG/59 RPT=307 AUTH\_BindServer(9a9blec,  
0, 0) 465 08/06/2002 16:45:50.940 SEV=9 AUTHDBG/69 RPT=307 Acct Server 1811fa4 has been bound to  
ACB 9a9blec, sessions = 1 466 08/06/2002 16:45:50.940 SEV=8 AUTHDBG/65 RPT=307  
AUTH\_CreateTimer(9a9blec, 0, 0) 467 08/06/2002 16:45:50.940 SEV=9 AUTHDBG/72 RPT=307 Reply timer  
created: handle = 5A180017 468 08/06/2002 16:45:50.940 SEV=8 AUTHDBG/61 RPT=307  
AUTH\_BuildMsg(9a9blec, 0, 0) 469 08/06/2002 16:45:50.940 SEV=8 AUTHDBG/27 RPT=66  
Radius\_Build(9a9blec) 470 08/06/2002 16:45:50.940 SEV=8 AUTHDBG/64 RPT=307  
AUTH\_StartTimer(9a9blec, 0, 0) 471 08/06/2002 16:45:50.940 SEV=9 AUTHDBG/73 RPT=307 Reply timer  
started: handle = 5A180017, timestamp = 355274990, timeout = 1000 472 08/06/2002 16:45:50.940  
SEV=8 AUTHDBG/62 RPT=307 AUTH\_SndRequest(9a9blec, 0, 0) 473 08/06/2002 16:45:50.940 SEV=8  
AUTHDBG/31 RPT=131 Radius\_Decode(62f2324, 140) 474 08/06/2002 16:45:50.940 SEV=13 AUTHDECODE/0  
RPT=35 0000: 043A008C 0A49A1AF C3022A50 B74B0B97 :...I...\*P.K.. 0010: 887AFEC1 010A7670  
6E757365 72310506 .z....vpnuser1.. 0020: 0000041C 06060000 00020706 00000001 .....  
0030: 08060A0A 0A011920 49200516 00000137 ..... I .....7 0040: 0001AB45 593C01C2 037B9CB1  
74320000 ...EY<...{.t2.. 0050: 00000000 00232806 00000001 2C0A3345 .....#(.....3E 0060:

35303030 3144420E 3137312E 36392E38 50001DB.171.69.8 0070: 392E3930 2D060000 00012906 00000000  
9.90-.....)..... 0080: 0406AC10 AC243D06 00000005 .....\$=..... 483 08/06/2002 16:45:50.940  
SEV=10 AUTHDECODE/1 RPT=5 Radius: Code = 4 (0x04) 484 08/06/2002 16:45:50.940 SEV=10  
AUTHDECODE/2 RPT=5 Radius: Identifier = 58 (0x3A) 485 08/06/2002 16:45:50.940 SEV=10  
AUTHDECODE/3 RPT=5 Radius: Length = 140 (0x008C) 486 08/06/2002 16:45:50.940 SEV=10 AUTHDECODE/4  
RPT=5 Radius: Vector: 487 08/06/2002 16:45:50.940 SEV=10 AUTHDECODE/0 RPT=36 0000: 0A49A1AF  
C3022A50 B74B0B97 887AFEC1 .I....\*P.K...z.. 488 08/06/2002 16:45:50.940 SEV=10 AUTHDECODE/5  
RPT=42 Radius: Type = 1 (0x01) User-Name 489 08/06/2002 16:45:50.940 SEV=10 AUTHDECODE/6 RPT=42  
Radius: Length = 10 (0x0A) 490 08/06/2002 16:45:50.940 SEV=10 AUTHDECODE/7 RPT=17 Radius: Value  
(String) = 491 08/06/2002 16:45:50.940 SEV=10 AUTHDECODE/0 RPT=37 0000: 76706E75 73657231  
vpnuser1 492 08/06/2002 16:45:50.940 SEV=10 AUTHDECODE/5 RPT=43 Radius: Type = 5 (0x05) NAS-Port  
493 08/06/2002 16:45:50.940 SEV=10 AUTHDECODE/6 RPT=43 Radius: Length = 6 (0x06) 494 08/06/2002  
16:45:50.940 SEV=10 AUTHDECODE/11 RPT=11 Radius: Value (Hex) = 0x41C 495 08/06/2002 16:45:50.940  
SEV=10 AUTHDECODE/5 RPT=44 Radius: Type = 6 (0x06) Service-Type 496 08/06/2002 16:45:50.940  
SEV=10 AUTHDECODE/6 RPT=44 Radius: Length = 6 (0x06) 497 08/06/2002 16:45:50.940 SEV=10  
AUTHDECODE/11 RPT=12 Radius: Value (Hex) = 0x2 498 08/06/2002 16:45:50.940 SEV=10 AUTHDECODE/5  
RPT=45 Radius: Type = 7 (0x07) Framed-Protocol 499 08/06/2002 16:45:50.940 SEV=10 AUTHDECODE/6  
RPT=45 Radius: Length = 6 (0x06) 500 08/06/2002 16:45:50.940 SEV=10 AUTHDECODE/11 RPT=13 Radius:  
Value (Hex) = 0x1 501 08/06/2002 16:45:50.940 SEV=10 AUTHDECODE/5 RPT=46 Radius: Type = 8 (0x08)  
Framed-IP-Address 502 08/06/2002 16:45:50.940 SEV=10 AUTHDECODE/6 RPT=46 Radius: Length = 6  
(0x06) 503 08/06/2002 16:45:50.940 SEV=10 AUTHDECODE/9 RPT=3 Radius: Value (IP Address) =  
10.10.10.1 (0x0A0A0A01) 504 08/06/2002 16:45:50.940 SEV=10 AUTHDECODE/5 RPT=47 Radius: Type = 25  
(0x19) Class 505 08/06/2002 16:45:50.940 SEV=10 AUTHDECODE/6 RPT=47 Radius: Length = 32 (0x20)  
506 08/06/2002 16:45:50.940 SEV=10 AUTHDECODE/7 RPT=18 Radius: Value (String) = 507 08/06/2002  
16:45:50.940 SEV=10 AUTHDECODE/0 RPT=38 0000: 49200516 00000137 0001AB45 593C01C2 I  
.....7...EY<.. 0010: 037B9CB1 74320000 00000000 0023 {...t.....# 509 08/06/2002 16:45:50.940  
SEV=10 AUTHDECODE/5 RPT=48 Radius: Type = 40 (0x28) Acct-Status-Type 510 08/06/2002 16:45:50.940  
SEV=10 AUTHDECODE/6 RPT=48 Radius: Length = 6 (0x06) 511 08/06/2002 16:45:50.940 SEV=10  
AUTHDECODE/11 RPT=14 Radius: Value (Hex) = 0x1 512 08/06/2002 16:45:50.940 SEV=10 AUTHDECODE/5  
RPT=49 Radius: Type = 44 (0x2C) Acct-Session-Id 513 08/06/2002 16:45:50.940 SEV=10 AUTHDECODE/6  
RPT=49 Radius: Length = 10 (0x0A) 514 08/06/2002 16:45:50.940 SEV=10 AUTHDECODE/7 RPT=19 Radius:  
Value (String) = 515 08/06/2002 16:45:50.940 SEV=10 AUTHDECODE/0 RPT=39 0000: 33453530 30303144  
3E50001D 516 08/06/2002 16:45:50.940 SEV=10 AUTHDECODE/5 RPT=50 Radius: Type = 66 (0x42) Tunnel-  
Client-Endpoint 517 08/06/2002 16:45:50.940 SEV=10 AUTHDECODE/6 RPT=50 Radius: Length = 14  
(0x0E) 518 08/06/2002 16:45:50.940 SEV=10 AUTHDECODE/7 RPT=20 Radius: Value (String) = 519  
08/06/2002 16:45:50.940 SEV=10 AUTHDECODE/0 RPT=40 0000: 3137312E 36392E38 392E3930 171.69.89.90  
520 08/06/2002 16:45:50.940 SEV=10 AUTHDECODE/5 RPT=51 Radius: Type = 45 (0x2D) Acct-Authentic  
521 08/06/2002 16:45:50.940 SEV=10 AUTHDECODE/6 RPT=51 Radius: Length = 6 (0x06) 522 08/06/2002  
16:45:50.940 SEV=10 AUTHDECODE/11 RPT=15 Radius: Value (Hex) = 0x1 523 08/06/2002 16:45:50.940  
SEV=10 AUTHDECODE/5 RPT=52 Radius: Type = 41 (0x29) Acct-Delay-Time 524 08/06/2002 16:45:50.940  
SEV=10 AUTHDECODE/6 RPT=52 Radius: Length = 6 (0x06) 525 08/06/2002 16:45:50.940 SEV=10  
AUTHDECODE/11 RPT=16 Radius: Value (Hex) = 0x0 526 08/06/2002 16:45:50.940 SEV=10 AUTHDECODE/5  
RPT=53 Radius: Type = 4 (0x04) NAS-IP-Address 527 08/06/2002 16:45:50.940 SEV=10 AUTHDECODE/6  
RPT=53 Radius: Length = 6 (0x06) 528 08/06/2002 16:45:50.940 SEV=10 AUTHDECODE/9 RPT=4 Radius:  
Value (IP Address) = 172.16.172.36 (0xAC10AC24) 529 08/06/2002 16:45:50.940 SEV=10 AUTHDECODE/5  
RPT=54 Radius: Type = 61 (0x3D) NAS-Port-Type 530 08/06/2002 16:45:50.940 SEV=10 AUTHDECODE/6  
RPT=54 Radius: Length = 6 (0x06) 531 08/06/2002 16:45:50.940 SEV=10 AUTHDECODE/11 RPT=17 Radius:  
Value (Hex) = 0x5 532 08/06/2002 16:45:50.940 SEV=8 AUTHDBG/28 RPT=66 Radius\_Xmt(9a9blec) 533  
08/06/2002 16:45:50.940 SEV=9 AUTHDBG/71 RPT=307 xmit\_cnt = 1 534 08/06/2002 16:45:51.040 SEV=8  
AUTHDBG/30 RPT=66 Radius\_Match(9a9blec, 500aacc), id = 0x3A, rcvd = 0x3A 535 08/06/2002  
16:45:51.040 SEV=8 AUTHDBG/63 RPT=307 AUTH\_RcvReply(9a9blec, 0, 0) 536 08/06/2002 16:45:51.040  
SEV=8 AUTHDBG/31 RPT=132 Radius\_Decode(500aacc, 20) 537 08/06/2002 16:45:51.040 SEV=13  
AUTHDECODE/0 RPT=41 0000: 053A0014 7DE07642 671D26FA 5B2E1904 ...}.vBg.&.[... 0010: 943FA41A  
.?. 539 08/06/2002 16:45:51.040 SEV=10 AUTHDECODE/1 RPT=6 Radius: Code = 5 (0x05) 540  
08/06/2002 16:45:51.040 SEV=10 AUTHDECODE/2 RPT=6 Radius: Identifier = 58 (0x3A) 541 08/06/2002  
16:45:51.040 SEV=10 AUTHDECODE/3 RPT=6 Radius: Length = 20 (0x0014) 542 08/06/2002 16:45:51.040  
SEV=10 AUTHDECODE/4 RPT=6 Radius: Vector: 543 08/06/2002 16:45:51.040 SEV=10 AUTHDECODE/0 RPT=42  
0000: 7DE07642 671D26FA 5B2E1904 943FA41A }.vBg.&.[....?. 544 08/06/2002 16:45:51.040 SEV=8  
AUTHDBG/29 RPT=66 Radius\_Rcv(9a9blec) 545 08/06/2002 16:45:51.040 SEV=8 AUTHDBG/66 RPT=307  
AUTH\_DeleteTimer(9a9blec, 0, 0) 546 08/06/2002 16:45:51.040 SEV=9 AUTHDBG/74 RPT=307 Reply timer  
stopped: handle = 5A180017, timestamp = 355275000 547 08/06/2002 16:45:51.040 SEV=8 AUTHDBG/58  
RPT=307 AUTH\_Callback(9a9blec, 0, 0) 548 08/06/2002 16:45:51.040 SEV=6 AUTH/10 RPT=31  
171.69.89.90 Accounting successful: handle = 104, server = 171.69.89.154, user = vpnuser1 549  
08/06/2002 16:45:51.040 SEV=8 AUTHDBG/2 RPT=265 AUTH\_Close(104) 550 08/06/2002 16:45:51.040

SEV=8 AUTHDBG/60 RPT=307 AUTH\_UnbindServer(9a9blec, 0, 0) 551 08/06/2002 16:45:51.040 SEV=9  
AUTHDBG/70 RPT=307 Acct Server 1811fa4 has been unbound from ACB 9a9blec, sessions = 0 552  
08/06/2002 16:45:51.040 SEV=8 AUTHDBG/10 RPT=265 AUTH\_Int\_FreeAuthCB(9a9blec) 553 08/06/2002  
16:45:51.040 SEV=7 AUTH/13 RPT=266 Authentication session closed: handle = 104 554 08/06/2002  
16:45:54.890 SEV=5 IKE/50 RPT=37 171.69.89.90 Group [windowsuser] User [vpnuser1] Connection  
terminated for peer vpnuser1 (Peer Terminate) Remote Proxy 10.10.10.1, Local Proxy 172.16.172.36  
557 08/06/2002 16:45:54.890 SEV=8 AUTHDBG/1 RPT=266 AUTH\_Open() returns 105 558 08/06/2002  
16:45:54.890 SEV=7 AUTH/12 RPT=267 Authentication session opened: handle = 105 559 08/06/2002  
16:45:54.890 SEV=8 AUTHDBG/3 RPT=308 AUTH\_PutAttrTable(105, 1b3b730) 560 08/06/2002 16:45:54.890  
SEV=8 AUTHDBG/7 RPT=32 AUTH\_Accounting(105, 0, 0) 561 08/06/2002 16:45:54.890 SEV=4 AUTH/28  
RPT=23 171.69.89.90 User [vpnuser1] disconnected: Duration: 0:00:03 Bytes xmt: 0 Bytes rcv: 0  
Reason: User Requested 563 08/06/2002 16:45:54.890 SEV=8 AUTHDBG/59 RPT=308  
AUTH\_BindServer(9a043f0, 0, 0) 564 08/06/2002 16:45:54.890 SEV=9 AUTHDBG/69 RPT=308 Acct Server  
1811fa4 has been bound to ACB 9a043f0, sessions = 1 565 08/06/2002 16:45:54.890 SEV=8 AUTHDBG/65  
RPT=308 AUTH\_CreateTimer(9a043f0, 0, 0) 566 08/06/2002 16:45:54.890 SEV=9 AUTHDBG/72 RPT=308  
Reply timer created: handle = 5A19001B 567 08/06/2002 16:45:54.890 SEV=8 AUTHDBG/61 RPT=308  
AUTH\_BuildMsg(9a043f0, 0, 0) 568 08/06/2002 16:45:54.890 SEV=8 AUTHDBG/27 RPT=67  
Radius\_Build(9a043f0) 569 08/06/2002 16:45:54.890 SEV=8 AUTHDBG/64 RPT=308  
AUTH\_StartTimer(9a043f0, 0, 0) 570 08/06/2002 16:45:54.890 SEV=9 AUTHDBG/73 RPT=308 Reply timer  
started: handle = 5A19001B, timestamp = 355275385, timeout = 1000 571 08/06/2002 16:45:54.890  
SEV=8 AUTHDBG/62 RPT=308 AUTH\_SndRequest(9a043f0, 0, 0) 572 08/06/2002 16:45:54.890 SEV=8  
AUTHDBG/31 RPT=133 Radius\_Decode(630894c, 176) 573 08/06/2002 16:45:54.890 SEV=13 AUTHDECODE/0  
RPT=43 0000: 043B00B0 295505F0 864A0A1F 6345232B ;...)U...J..cE#++ 0010: 81D315E5 010A7670  
6E757365 72310506 .....vpnuser1.. 0020: 0000041C 06060000 00020706 00000001 .....  
0030: 08060A0A 0A011920 49200516 00000137 ..... I .....7 0040: 0001AB45 593C01C2 037B9CB1  
74320000 ...EY<...{.t2.. 0050: 00000000 00232806 00000002 2A060000 .....#(.....\*... 0060:  
00002B06 00000000 2C0A3345 35303030 ..+.....,3E5000 0070: 31442E06 00000004 2F060000 00003006  
1D...../.....0. 0080: 00000000 31060000 0001420E 3137312E ....1.....B.171. 0090: 36392E38  
392E3930 2D060000 00012906 69.89.90-.....). 00A0: 00000000 0406AC10 AC243D06 00000005  
.....\$=..... 584 08/06/2002 16:45:54.890 SEV=10 AUTHDECODE/1 RPT=7 Radius: Code = 4 (0x04)  
585 08/06/2002 16:45:54.890 SEV=10 AUTHDECODE/2 RPT=7 Radius: Identifier = 59 (0x3B) 586  
08/06/2002 16:45:54.890 SEV=10 AUTHDECODE/3 RPT=7 Radius: Length = 176 (0x00B0) 587 08/06/2002  
16:45:54.890 SEV=10 AUTHDECODE/4 RPT=7 Radius: Vector: 588 08/06/2002 16:45:54.890 SEV=10  
AUTHDECODE/0 RPT=44 0000: 295505F0 864A0A1F 6345232B 81D315E5 )U...J..cE#++.... 589 08/06/2002  
16:45:54.890 SEV=10 AUTHDECODE/5 RPT=55 Radius: Type = 1 (0x01) User-Name 590 08/06/2002  
16:45:54.890 SEV=10 AUTHDECODE/6 RPT=55 Radius: Length = 10 (0x0A) 591 08/06/2002 16:45:54.890  
SEV=10 AUTHDECODE/7 RPT=21 Radius: Value (String) = 592 08/06/2002 16:45:54.890 SEV=10  
AUTHDECODE/0 RPT=45 0000: 76706E75 73657231 vpnuser1 593 08/06/2002 16:45:54.900 SEV=10  
AUTHDECODE/5 RPT=56 Radius: Type = 5 (0x05) NAS-Port 594 08/06/2002 16:45:54.900 SEV=10  
AUTHDECODE/6 RPT=56 Radius: Length = 6 (0x06) 595 08/06/2002 16:45:54.900 SEV=10 AUTHDECODE/11  
RPT=18 Radius: Value (Hex) = 0x41C 596 08/06/2002 16:45:54.900 SEV=10 AUTHDECODE/5 RPT=57  
Radius: Type = 6 (0x06) Service-Type 597 08/06/2002 16:45:54.900 SEV=10 AUTHDECODE/6 RPT=57  
Radius: Length = 6 (0x06) 598 08/06/2002 16:45:54.900 SEV=10 AUTHDECODE/11 RPT=19 Radius: Value  
(Hex) = 0x2 599 08/06/2002 16:45:54.900 SEV=10 AUTHDECODE/5 RPT=58 Radius: Type = 7 (0x07)  
Framed-Protocol 600 08/06/2002 16:45:54.900 SEV=10 AUTHDECODE/6 RPT=58 Radius: Length = 6 (0x06)  
601 08/06/2002 16:45:54.900 SEV=10 AUTHDECODE/11 RPT=20 Radius: Value (Hex) = 0x1 602 08/06/2002  
16:45:54.900 SEV=10 AUTHDECODE/5 RPT=59 Radius: Type = 8 (0x08) Framed-IP-Address 603 08/06/2002  
16:45:54.900 SEV=10 AUTHDECODE/6 RPT=59 Radius: Length = 6 (0x06) 604 08/06/2002 16:45:54.900  
SEV=10 AUTHDECODE/9 RPT=5 Radius: Value (IP Address) = 10.10.10.1 (0x0A0A0A01) 605 08/06/2002  
16:45:54.900 SEV=10 AUTHDECODE/5 RPT=60 Radius: Type = 25 (0x19) Class 606 08/06/2002  
16:45:54.900 SEV=10 AUTHDECODE/6 RPT=60 Radius: Length = 32 (0x20) 607 08/06/2002 16:45:54.900  
SEV=10 AUTHDECODE/7 RPT=22 Radius: Value (String) = 608 08/06/2002 16:45:54.900 SEV=10  
AUTHDECODE/0 RPT=46 0000: 49200516 00000137 0001AB45 593C01C2 I .....7...EY<... 0010: 037B9CB1  
74320000 00000000 0023 .{.t2.....# 610 08/06/2002 16:45:54.900 SEV=10 AUTHDECODE/5 RPT=61  
Radius: Type = 40 (0x28) Acct-Status-Type 611 08/06/2002 16:45:54.900 SEV=10 AUTHDECODE/6 RPT=61  
Radius: Length = 6 (0x06) 612 08/06/2002 16:45:54.900 SEV=10 AUTHDECODE/11 RPT=21 Radius: Value  
(Hex) = 0x2 613 08/06/2002 16:45:54.900 SEV=10 AUTHDECODE/5 RPT=62 Radius: Type = 42 (0x2A)  
Acct-Input-Octets 614 08/06/2002 16:45:54.900 SEV=10 AUTHDECODE/6 RPT=62 Radius: Length = 6  
(0x06) 615 08/06/2002 16:45:54.900 SEV=10 AUTHDECODE/11 RPT=22 Radius: Value (Hex) = 0x0 616  
08/06/2002 16:45:54.900 SEV=10 AUTHDECODE/5 RPT=63 Radius: Type = 43 (0x2B) Acct-Output-Octets  
617 08/06/2002 16:45:54.900 SEV=10 AUTHDECODE/6 RPT=63 Radius: Length = 6 (0x06) 618 08/06/2002  
16:45:54.900 SEV=10 AUTHDECODE/11 RPT=23 Radius: Value (Hex) = 0x0 619 08/06/2002 16:45:54.900  
SEV=10 AUTHDECODE/5 RPT=64 Radius: Type = 44 (0x2C) Acct-Session-Id 620 08/06/2002 16:45:54.900  
SEV=10 AUTHDECODE/6 RPT=64 Radius: Length = 10 (0x0A) 621 08/06/2002 16:45:54.900 SEV=10

AUTHDECODE/7 RPT=23 Radius: Value (String) = 622 08/06/2002 16:45:54.900 SEV=10 AUTHDECODE/0  
RPT=47 0000: 33453530 30303144 3E50001D 623 08/06/2002 16:45:54.900 SEV=10 AUTHDECODE/5 RPT=65  
Radius: Type = 46 (0x2E) Acct-Session-Time 624 08/06/2002 16:45:54.900 SEV=10 AUTHDECODE/6  
RPT=65 Radius: Length = 6 (0x06) 625 08/06/2002 16:45:54.900 SEV=10 AUTHDECODE/11 RPT=24 Radius:  
Value (Hex) = 0x4 626 08/06/2002 16:45:54.900 SEV=10 AUTHDECODE/5 RPT=66 Radius: Type = 47  
(0x2F) Acct-Input-Packets 627 08/06/2002 16:45:54.900 SEV=10 AUTHDECODE/6 RPT=66 Radius: Length  
= 6 (0x06) 628 08/06/2002 16:45:54.900 SEV=10 AUTHDECODE/11 RPT=25 Radius: Value (Hex) = 0x0 629  
08/06/2002 16:45:54.900 SEV=10 AUTHDECODE/5 RPT=67 Radius: Type = 48 (0x30) Acct-Output-Packets  
630 08/06/2002 16:45:54.900 SEV=10 AUTHDECODE/6 RPT=67 Radius: Length = 6 (0x06) 631 08/06/2002  
16:45:54.900 SEV=10 AUTHDECODE/11 RPT=26 Radius: Value (Hex) = 0x0 632 08/06/2002 16:45:54.900  
SEV=10 AUTHDECODE/5 RPT=68 Radius: Type = 49 (0x31) Acct-Terminate-Cause 633 08/06/2002  
16:45:54.900 SEV=10 AUTHDECODE/6 RPT=68 Radius: Length = 6 (0x06) 634 08/06/2002 16:45:54.900  
SEV=10 AUTHDECODE/11 RPT=27 Radius: Value (Hex) = 0x1 635 08/06/2002 16:45:54.900 SEV=10  
AUTHDECODE/5 RPT=69 Radius: Type = 66 (0x42) Tunnel-Client-Endpoint 636 08/06/2002 16:45:54.900  
SEV=10 AUTHDECODE/6 RPT=69 Radius: Length = 14 (0x0E) 637 08/06/2002 16:45:54.900 SEV=10  
AUTHDECODE/7 RPT=24 Radius: Value (String) = 638 08/06/2002 16:45:54.900 SEV=10 AUTHDECODE/0  
RPT=48 0000: 3137312E 36392E38 392E3930 171.69.89.90 639 08/06/2002 16:45:54.900 SEV=10  
AUTHDECODE/5 RPT=70 Radius: Type = 45 (0x2D) Acct-Authentic 640 08/06/2002 16:45:54.900 SEV=10  
AUTHDECODE/6 RPT=70 Radius: Length = 6 (0x06) 641 08/06/2002 16:45:54.900 SEV=10 AUTHDECODE/11  
RPT=28 Radius: Value (Hex) = 0x1 642 08/06/2002 16:45:54.900 SEV=10 AUTHDECODE/5 RPT=71 Radius:  
Type = 41 (0x29) Acct-Delay-Time 643 08/06/2002 16:45:54.900 SEV=10 AUTHDECODE/6 RPT=71 Radius:  
Length = 6 (0x06) 644 08/06/2002 16:45:54.900 SEV=10 AUTHDECODE/11 RPT=29 Radius: Value (Hex) =  
0x0 645 08/06/2002 16:45:54.900 SEV=10 AUTHDECODE/5 RPT=72 Radius: Type = 4 (0x04) NAS-IP-  
Address 646 08/06/2002 16:45:54.900 SEV=10 AUTHDECODE/6 RPT=72 Radius: Length = 6 (0x06) 647  
08/06/2002 16:45:54.900 SEV=10 AUTHDECODE/9 RPT=6 Radius: Value (IP Address) = 172.16.172.36  
(0xAC10AC24) 648 08/06/2002 16:45:54.900 SEV=10 AUTHDECODE/5 RPT=73 Radius: Type = 61 (0x3D)  
NAS-Port-Type 649 08/06/2002 16:45:54.900 SEV=10 AUTHDECODE/6 RPT=73 Radius: Length = 6 (0x06)  
650 08/06/2002 16:45:54.900 SEV=10 AUTHDECODE/11 RPT=30 Radius: Value (Hex) = 0x5 651 08/06/2002  
16:45:54.900 SEV=8 AUTHDBG/28 RPT=67 Radius\_Xmt(9a043f0) 652 08/06/2002 16:45:54.900 SEV=9  
AUTHDBG/71 RPT=308 xmit\_cnt = 1 653 08/06/2002 16:45:54.900 SEV=6 IKE/38 RPT=31 171.69.89.90  
Header invalid, missing SA payload! (next payload = 8) 654 08/06/2002 16:45:54.900 SEV=8  
AUTHDBG/30 RPT=67 Radius\_Match(9a043f0, 5009d58), id = 0x3B, rcvd = 0x3B 655 08/06/2002  
16:45:54.900 SEV=8 AUTHDBG/63 RPT=308 AUTH\_RcvReply(9a043f0, 0, 0) 656 08/06/2002 16:45:54.900  
SEV=8 AUTHDBG/31 RPT=134 Radius\_Decode(5009d58, 20) 657 08/06/2002 16:45:54.900 SEV=13  
AUTHDECODE/0 RPT=49 0000: 053B0014 A7C83B83 2EA5C679 FB0B4540 .;....;....y..E@ 0010: 4F1A83EB  
O... 659 08/06/2002 16:45:54.900 SEV=10 AUTHDECODE/1 RPT=8 Radius: Code = 5 (0x05) 660  
08/06/2002 16:45:54.900 SEV=10 AUTHDECODE/2 RPT=8 Radius: Identifier = 59 (0x3B) 661 08/06/2002  
16:45:54.900 SEV=10 AUTHDECODE/3 RPT=8 Radius: Length = 20 (0x0014) 662 08/06/2002 16:45:54.900  
SEV=10 AUTHDECODE/4 RPT=8 Radius: Vector: 663 08/06/2002 16:45:54.900 SEV=10 AUTHDECODE/0 RPT=50  
0000: A7C83B83 2EA5C679 FB0B4540 4F1A83EB .;....y..E@O... 664 08/06/2002 16:45:54.900 SEV=8  
AUTHDBG/29 RPT=67 Radius\_Rcv(9a043f0) 665 08/06/2002 16:45:54.900 SEV=8 AUTHDBG/66 RPT=308  
AUTH\_DeleteTimer(9a043f0, 0, 0) 666 08/06/2002 16:45:54.900 SEV=9 AUTHDBG/74 RPT=308 Reply timer  
stopped: handle = 5A19001B, timestamp = 355275395 667 08/06/2002 16:45:54.900 SEV=8 AUTHDBG/58  
RPT=308 AUTH\_Callback(9a043f0, 0, 0) 668 08/06/2002 16:45:54.900 SEV=6 AUTH/10 RPT=32  
171.69.89.90 Accounting successful: handle = 105, server = 171.69.89.154, user = vpnuser1 669  
08/06/2002 16:45:54.900 SEV=8 AUTHDBG/2 RPT=266 AUTH\_Close(105) 670 08/06/2002 16:45:54.900  
SEV=8 AUTHDBG/60 RPT=308 AUTH\_UnbindServer(9a043f0, 0, 0) 671 08/06/2002 16:45:54.900 SEV=9  
AUTHDBG/70 RPT=308 Acct Server 1811fa4 has been unbound from ACB 9a043f0, sessions = 0 672  
08/06/2002 16:45:54.900 SEV=8 AUTHDBG/10 RPT=266 AUTH\_Int\_FreeAuthCB(9a043f0) 673 08/06/2002  
16:45:54.900 SEV=7 AUTH/13 RPT=267 Authentication session closed: handle = 105

## [Дополнительные сведения](#)

- [Страница поддержки концентратора Cisco VPN серии 3000](#)
- [Страница поддержки Cisco VPN 3000 Series Client](#)
- [Страница поддержки IPSec](#)
- [Техническая поддержка - Cisco Systems](#)