

VoIP com IVR

Índice

[Introdução](#)

[Pré-requisitos](#)

[Requisitos](#)

[Componentes Utilizados](#)

[Convenções](#)

[Configurar](#)

[Diagrama de Rede](#)

[Configurações](#)

[Verificar](#)

[Saída Raleigh5300A](#)

[Saída SanJose5300A](#)

[Saída de Raleigh3600A](#)

[Saída SanJose3640A](#)

[Troubleshooting](#)

[Comandos para Troubleshooting](#)

[Informações Relacionadas](#)

Introdução

Este documento mostra-lhe como configurar e pesquisar defeitos a resposta de voz interativa básica (IVR) em uma rede voip com gateways. O IVR é um termo usado para descrever os sistemas que fornecem a informação sob a forma das mensagens gravadas sobre linhas de telefone em resposta à entrada de usuário sob a forma das palavras dita ou da sinalização multifrequency do tom dual (DTMF) (mais comum). Os exemplos incluem os bancos que permitem que você verifique seu equilíbrio de todo o telefone e sistemas automatizados da quota de ações.

Pré-requisitos

Requisitos

Não existem requisitos específicos para este documento.

Componentes Utilizados

As informações neste documento são baseadas nestas versões de software e hardware:

- Software Release 12.1(1) de Cisco IOS® que é executado no Roteadores.

As informações neste documento foram criadas a partir de dispositivos em um ambiente de laboratório específico. Todos os dispositivos utilizados neste documento foram iniciados com uma configuração (padrão) inicial. Se você estiver trabalhando em uma rede ativa, certifique-se de que entende o impacto potencial de qualquer comando antes de utilizá-lo.

Convenções

Consulte as [Convenções de Dicas Técnicas da Cisco](#) para obter mais informações sobre convenções de documentos.

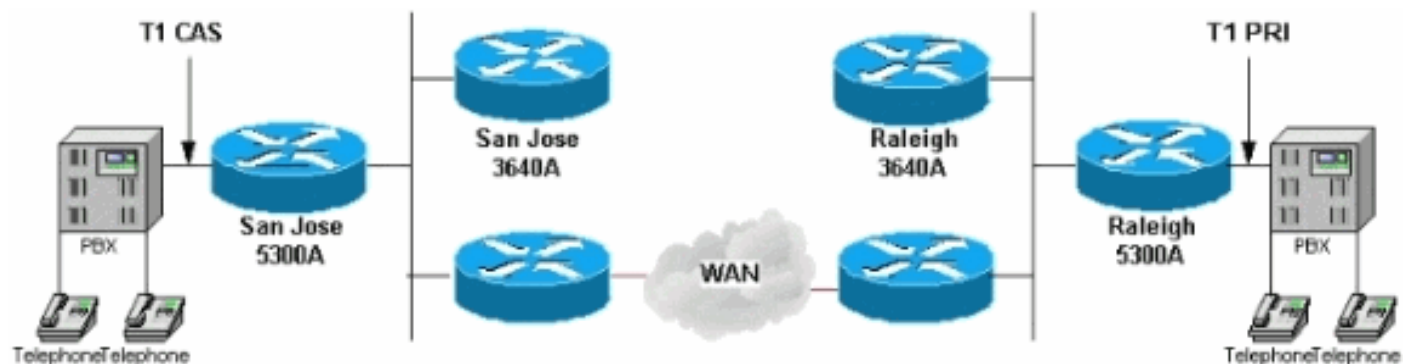
Configurar

Nesta seção, você encontrará informações para configurar os recursos descritos neste documento.

Note: Use a ferramenta [Command Lookup Tool](#) ([apenas para clientes registrados](#)) para obter mais informações sobre os comandos usados neste documento.

Diagrama de Rede

Este documento utiliza a configuração de rede mostrada neste diagrama:



O Raleigh5300 neste diagrama da rede executa o IVR usando o script interno do **clid_authen_collect**. Este script olha a identificação de número automática de uma chamada recebida (ANI). Isto ajuda o atendimento que recebe dispositivos para identificar o número da chamada originada e Dialed Number Identification Service (DNIS) e o número que foi chamado para alcançar um dispositivo particular. Então tenta combinar estes com um nome de usuário e senha. Se o script não combina a um nome de usuário e senha, como faz neste caso, usa Comandos de voz para obter o account number e a senha (referidos frequentemente como o "PIN"). Depois que um chamador incorpora o nome de usuário e senha e é autenticado, o script alerta para que um número de destino esteja chamado.

A configuração de IVR aqui é muito uma configuração básica. Em um ambiente real, o nome de usuário e senha é armazenado em um server do Remote Authentication Dial-In User Service (RADIUS). A autenticação de login H.323 do Authentication, Authorization, and Accounting (AAA) aponta ao RAIO, e não local. Isto é realizado com o **comando aaa authentication login h323 group radius** na configuração do roteador que executa o IVR.

Sob o **comando dial-peer voice 1**, o aplicativo de IVR é configurado. Neste caso, aponta ao script do **clid_authen_collect**. Há umas várias configurações para o IVR no software. Entre no **[summary]** da [Voz do aplicativo do atendimento do exec command show](#) para ver isto. Refira [configurar a](#)

[resposta de voz interativa para plataformas de acesso de Cisco](#) para mais informação.

Configurações

Este documento utiliza as seguintes configurações:

- [Raleigh 5300A](#)
- [Raleigh 3640A](#)
- [SÃO JOSÉ 5300A](#)
- [SÃO JOSÉ 3640A](#)

Raleigh 5300A

```
Raleigh5300A#show run
Building configuration...

Current configuration:
!
! Last configuration change at 00:42:21 UTC Tue Mar 28
2000
! NVRAM config last updated at 00:42:22 UTC Tue Mar 28
2000
!
version 12.1
service timestamps debug datetime msec
service timestamps log datetime msec
no service password-encryption
!
hostname Raleigh5300A
!
logging buffered 50000 debugging
AAA new-model
AAA authentication login default none
AAA authentication login h323 local
enable secret password !--- Choose a strong password
with at least one capital letter, !--- one number, and
one special character. ! username 1234 password 0 5678
spe 1/0 1/7 firmware location
system:/ucode/mica_port_firmware ! ! resource-pool
disable ! ! ! ! ! clock calendar-valid ip subnet-zero !
isdn switch-type primary-5ess isdn voice-call-failure 0
mta receive maximum-recipients 0 ! ! controller T1 0
framing esf clock source line primary linecode b8zs pri-
group timeslots 1-24 ! controller T1 1 clock source line
secondary 1 ! controller T1 2 ! controller T1 3 ! !
voice-port 0:D ! ! dial-peer voice 1 pots application
clid_authen_collect incoming called-number 4085556400
answer-address 9195552001 destination-pattern
919#9195552... port 0:D prefix 919 ! dial-peer voice 2
voip destination-pattern 4085556400 tech-prefix 408#
session target ras ! num-exp 6... 4085556... !--- This
command is used to configure a Cisco IOS® gateway to
route the calls coming to a main direct inward dial
(DID) number to an AutoAttendant. gateway ! interface
Ethernet0 no ip address shutdown ! interface Serial0:23
no ip address ip mroute-cache isdn switch-type primary-
5ess isdn incoming-voice modem fair-queue 64 256 0 no
cdp enable ! interface FastEthernet0 ip address
```

```
172.16.120.2 255.255.255.0 duplex auto speed auto h323-
gateway voip interface h323-gateway voip id RALgk1
ipaddr 172.16.120.1 1718 h323-gateway voip h323-id
RAL5300A@cisco.com h323-gateway voip tech-prefix 919# !
ip classless ip route 172.16.110.0 255.255.255.0
172.16.120.10 no ip http server ! line con 0 transport
input none line 1 48 transport output lat pad telnet
rlogin udptn v120 lapb-ta line aux 0 line vty 0 4
password cisco ! ntp clock-period 17179842 ntp server
172.16.110.10 end
```

Raleigh 3640A

```
Raleigh3640A#show run
Building configuration...
```

```
Current configuration:
```

```
!
version 12.1
service timestamps debug datetime msec
service timestamps log datetime msec
no service password-encryption
!
hostname Raleigh3640A
!
logging buffered 50000 debugging
enable secret password
!--- Choose a strong password with at least one capital
letter, !--- one number, and one special character. !!
!!! ip subnet-zero ! ip dvmrp route-limit 20000 !!!
!! interface Ethernet1/0 ip address 172.16.120.1
255.255.255.0 ! interface Serial1/0 no ip address no ip
mroute-cache no fair-queue ! interface TokenRing1/0 no
ip address shutdown ring-speed 16 ! ip classless ip
route 172.16.110.0 255.255.255.0 172.16.120.10 no ip
http server !! gatekeeper zone local RALgk1 cisco.com
zone remote SJgk1 cisco.com 172.16.110.1 1719 zone
prefix SJgk1 408..... gw-type-prefix 408#* no shutdown
!! line con 0 transport input none line aux 0 line vty
0 4 password cisco login ! ntp clock-period 17179856 ntp
server 172.16.110.10 end
```

SÃO JOSÉ 5300A

```
SanJose5300A#show run
Building configuration...
```

```
Current configuration:
```

```
!
! Last configuration change at 00:15:49 UTC Tue Mar 28
2000
! NVRAM config last updated at 00:15:50 UTC Tue Mar 28
2000
!
version 12.1
service timestamps debug datetime msec
service timestamps log datetime msec
no service password-encryption
!
hostname SanJose5300A
!
```

```
logging buffered 50000 debugging
enable secret password
!--- Choose a strong password with at least one capital
letter, !--- one number, and one special character. !!
! resource-pool disable ! ! ! ! ! ip subnet-zero ! isdn
voice-call-failure 0 mta receive maximum-recipients 0 !
! controller T1 0 framing esf clock source line primary
linecode b8zs ds0-group 1 timeslots 1-4 type e&m-
immediate-start ! controller T1 1 clock source line
secondary 1 ! controller T1 2 ! controller T1 3 ! !
voice-port 0:1 ! ! dial-peer voice 1 pots answer-address
4085556001 destination-pattern 408#4085556... direct-
inward-dial port 0:1 prefix 6 ! dial-peer voice 2 voip
destination-pattern 9195552... tech-prefix 919# session
target ras ! num-exp 2... 9195552... gateway ! interface
Ethernet0 no ip address ! interface FastEthernet0 ip
address 172.16.110.2 255.255.255.0 duplex auto speed
auto h323-gateway voip interface h323-gateway voip id
SJgk1 ipaddr 172.16.110.1 1718 h323-gateway voip h323-id
SJ5300A@cisco.com h323-gateway voip tech-prefix 408# !
ip classless ip route 172.16.120.0 255.255.255.0
172.16.110.10 no ip http server ! ! ! line con 0
transport input none line aux 0 line vty 0 4 password
cisco login ! ntp clock-period 17179924 ntp server
172.16.110.10 end
```

SÃO JOSÉ 3640A

```
SanJose3640A#show run
Building configuration...

Current configuration:
!
! NVRAM config last updated at 00:05:33 UTC Tue Mar 28
2000
!
version 12.1
service timestamps debug datetime msec
service timestamps log datetime msec
no service password-encryption
!
hostname SanJose3640A
!
boot system flash c3640-ix-mz.120-7.T
logging buffered 50000 debugging
enable secret password !--- Choose a strong password
with at least one capital letter, !--- one number, and
one special character. ! ! ! ! ! ip subnet-zero ! ip
dvmrp route-limit 20000 ! ! interface Ethernet1/0 ip
address 172.16.110.1 255.255.255.0 ! interface Serial1/0
no ip address no ip mroute-cache shutdown no fair-queue
! interface Ethernet1/1 no ip address shutdown ! ip
classless ip route 172.16.120.0 255.255.255.0
172.16.110.10 no ip http server ! tftp-server
flash:c3640-ix-mz.121-1.bin ! gatekeeper zone local
SJgk1 cisco.com zone remote RALgk1 cisco.com
172.16.120.1 1719 zone prefix RALgk1 919..... gw-type-
prefix 919#* no shutdown ! ! line con 0 transport input
none line aux 0 line vty 0 4 password cisco login ! ntp
clock-period 17179867 ntp server 172.16.110.10 end
```

Verificar

Esta seção fornece as informações para confirmar que sua configuração funciona adequadamente.

A [Output Interpreter Tool \(apenas para clientes registrados\)](#) (OIT) suporta determinados comandos show. Use a OIT para exibir uma análise da saída do comando show.

- [gateway da mostra](#) - Indica o status atual de gateway.
- [mostre atendimentos do porteiro](#) - Indica o estado de cada atendimento em curso que um porteiro está ciente de.
- [mostre o GW-tipo-prefixo do porteiro](#) - Indica a tabela do prefixo de tecnologia do gateway.
- [flash da mostra](#) - Indica os índices da memória Flash.
- [mostre o clid_authen_collect da Voz do aplicativo do atendimento](#) - Indica uma lista de Aplicações de voz que são configuradas.
- [mostre valores-limite do porteiro](#) - Indica o estado de todos os valores-limite registrados para um porteiro.
- [log da mostra](#) - Indica o **resultado do debug** do logging buffer quando os **comandos debug** são permitidos.
- [mostre o \[brief\] da voz ativa do atendimento](#) - Indica o status de chamada para todas as portas de voz.
- [eliminação de erros da mostra](#) - Indica que **comandos debug** são permitidos a um momento determinado.

Depois que você incorpora as configurações mostradas neste documento em seu Roteadores, verifique que a rede se opera corretamente. Estes comandos e saída respectiva mostram uma implementação bem sucedida das configurações neste documento.

Os problemas mais comuns com IVR incluem:

- O aplicativo não é configurado corretamente no dial-peer do serviço de telefonia tradicional (POTS). Certifique-se de que a chamada de telefonia entrante combina o POTS dial peer com o aplicativo. O POTS dial peer combina o primeiro dial-peer com o comando port de harmonização na configuração ou se o número chamado combina o **<number> entrante do chamar-número do** subcommand do dial-peer. Certifique-se do aplicativo exista realmente com o comando do **[summary] da Voz do aplicativo do atendimento da mostra**. Certifique-se de que o nome do aplicativo não contém um erro de sintaxe.
- Certifique-se de que o direto-para dentro-seletor não está configurado nos potenciômetros do dial-peer.
- Assegure-se de que os arquivos de áudio apropriados estejam carregados no flash.
- Assegure-se de que a autenticação com nome de usuário e senha esteja configurada corretamente.

Saída Raleigh5300A

```
Raleigh5300A#show gateway
Gateway RAL5300A@cisco.com is registered to Gatekeeper RALgk1
```

```
Alias list (CLI configured)
```

```
H323-ID RAL5300A@cisco.com
Alias list (last RCF)
H323-ID RAL5300A@cisco.com
```

H323 resource thresholding is Disabled

Raleigh5300A#**show flash**

System flash directory:

File	Length	Name/status
1	7084904	c5300-is-mz.121-1.bin
2	23186	enter_account.au
3	38087	enter_destination.au
4	20414	enter_pin.au
5	17513	auth_failed.au

[7184432 bytes used, 1204176 available, 8388608 total]
8192K bytes of processor board System flash (Read/Write)

Raleigh5300A#**show call application voice clid_authen_collect**

Idle call list has 1 calls on it.

Application clid_authen_collect

The script is compiled into the image

It has 0 calls active.

The TCL Script is:

```
-----
# clid_authen_collect.tcl
#-----
# September 1998, David Ramsthaller
#
# Copyright (c) 1998, 1999 by cisco Systems, Inc.
# All rights reserved.
#-----
# Mimic the clid_authen_collect script in the SP1.0 release.
#
# It authenticates using (ani, dnis) for (account, password). If
# that fails, it collects account and pin number, then authenticates
# using (account, pin).
#
# If authentication passes, it collects the destination number and
# places the call.
#
# The main routine is at the bottom. Start reading the script there.
#
```

```
proc do_get_account {} {
    global state
    global account

    set prompt(url) flash:enter_account.au
    set prompt(interrupt) true
    set prompt(abortKey) *
    set prompt(terminationKey) #
    set patterns(account) .+
    set event [promptAndCollect prompt info patterns ]

    if {$event == "collect success"} {
        set state get_pin
    }
}
```

```

        set account $info(digits)
        return 0
    }

    if {$event == "collect aborted"} {
        set state get_account
        return 0
    }

    if {$event == "collect fail" || $event == "collect timeout"} {
        set state get_account
        return 0
    }
    set state end
    return 0
}

proc do_get_pin {} {
    global state
    global pin

    set prompt(url) flash:enter_pin.au
    set prompt(interrupt) true
    set prompt(abortKey) *
    set prompt(terminationKey) #
    set patterns(account) .+
    set event [promptAndCollect prompt info patterns ]

    if {$event == "collect success"} {
        set state authenticate
        set pin $info(digits)
        return 0
    }

    if {$event == "collect aborted"} {
        set state get_account
        return 0
    }

    if {$event == "collect fail" || $event == "collect timeout"} {
        # timeout
        if {$info(code) == 102} {
            set state get_pin
            return 0
        }

        # invalid number
        if {$info(code) == 28} {
            set state get_pin
            return 0
        }
    }

    set state end
    return 0
}

```



```

proc do_authenticate {} {
    global state
    global pin
    global account

    set event [authenticate $account $pin info]

    if { $event == "authenticated" } {
        set state authen_pass
        return 0
    }

    if {$event == "authentication failed"} {
        set state authen_fail
        return 0
    }

    set state end
    return 0
}

proc do_get_dest {} {
    global state
    global destination

    set prompt(url) flash:enter_destination.au
    set prompt(interrupt) true
    set prompt(abortKey) *
    set prompt(terminationKey) #
    set prompt(dialPlan) true

    set event [promptAndCollect prompt info ]

    if {$event == "collect success"} {
        set state place_call
        set destination $info(digits)
        return 0
    }

    if {$event == "collect aborted"} {
        set state get_dest
        return 0
    }

    if {$event == "collect fail" || $event == "collect timeout"} {
        set state get_dest
        return 0
    }

    set state end
    return 0
}

```

```

proc do_authen_pass {} {
    global state
    global destination

    set dnislens [string len [dnis]]

    if { [did] && $dnislens } {
        set destination [dnis]
        set state place_call
    } else {
        set state get_dest
    }
    return 0
}

proc do_place_call {} {
    global state
    global destination

    set event [placeCall $destination callInfo info]

    if {$event == "active"} {
        set state active
        return 0
    }
    if {$event == "call fail"} {
        set state place_fail
        return 0
    }

    set state end
    return 0
}

proc do_active_notimer {} {
    global state

    set event [waitEvent]
    while { $event == "digit" } {
        set event [waitEvent]
    }
    set state end
    return 0
}

proc do_active_last_timer {} {
    global state

    set event [startTimer [creditTimeLeft] info]
    while { $event == "digit" } {
        set event [startTimer $info(timeLeft) info]
    }
    if { $event == "timeout" } {
        clearOutgoingLeg retInfo
    }
}

```

```

        set state out_of_time
    } else {
        set state end
    }

    return 0
}

proc do_active_timer {} {
    global state

    if { [creditTimeLeft] < 10 } {
        do_active_last_timer
        return 0
    }
    set delay [expr [creditTimeLeft] - 10]
    set event [startTimer $delay info]
    while { $event == "digit" } {
        set event [startTimer $info(timeLeft) info]
    }
    if { $event == "timeout" } {
        insertMessage flash:beep.au retInfo
        do_active_last_timer
    } else {
        set state end
    }

    return 0
}

proc do_active {} {
    global state

    if { ( [creditTimeLeft] == "unlimited") ||
        ([creditTimeLeft] == "uninitialized") } {
        do_active_notimer
    } else {
        do_active_timer
    }
    return 0
}

proc do_out_of_time {} {
    global state

    set prompt(url) flash:out_of_time.au
    set prompt(playComplete) true
    set event [promptAndCollect prompt info ]
    set state end
    return 0
}

proc do_authen_fail {} {
    global state

```

```
    set prompt(url) flash:auth_failed.au
    set prompt(playComplete) true
    set event [promptAndCollect prompt info ]
    set state end
    return 0
}
```

```
proc do_place_fail {} {
    global state

    playFailureTone 5 retInfo
    set state end
    return 0
}
```

```
#-----
# And here is the main loop
#
```

```
acceptCall
```

```
set event [authenticate [ani] [dnis] info]
```

```
if {$event != "authenticated"} {
    set state get_account
} else {
    set state authen_pass
}
```

```
while {$state != "end"} {
    puts "cid([callID]) running state $state"
    if {$state == "get_account"} {
        do_get_account
    } elseif {$state == "get_pin"} {
        do_get_pin
    } elseif {$state == "authenticate"} {
        do_authenticate
    } elseif {$state == "get_dest"} {
        do_get_dest
    } elseif {$state == "place_call"} {
        do_place_call
    } elseif {$state == "active"} {
        do_active
    } elseif {$state == "authen_fail" } {
        do_authen_fail
    } elseif {$state == "authen_pass" } {
        do_authen_pass
    } elseif {$state == "place_fail"} {
        do_place_fail
    } elseif {$state == "out_of_time"} {
        do_out_of_time
    } else {
        break
    }
}
```

O roteador Raleigh tem alguns **comandos debug** permitidos. O comando **show debug** mostra este:

```
Raleigh5300A#show debug
```

```
General OS: AAA Authentication debugging is on
ISDN: ISDN Q931 packets debugging is on
ISDN Q931 packets debug DSLs. (On/Off/No DSL:1/0/-) DSL 0 --> 7 1 - - - - -
- -
H.323 RAS: H.323 RAS Messages debugging is on
voip AAA: voip AAA debugging is on
voip: voip cCAPI function enter/exit debugging is on
ivr: ivr state transitions debugging is on
```

Supõe que um atendimento está feito quando permitido com debuga mostrado. Esta é a saída que ocorre com tal atendimento:

```
Raleigh5300A#show log
```

```
Syslog logging: enabled (0 messages dropped, 0 flushes, 0 overruns)
  Console logging: level debugging, 5422 messages logged
  Monitor logging: level debugging, 0 messages logged
  Buffer logging: level debugging, 5422 messages logged
  Trap logging: level informational, 230 message lines logged
```

```
Log Buffer (50000 bytes):
```

```
Mar 28 00:44:50.741: RASLib::ras_sendto: msg length 76
                    from 172.16.120.2:49831 to 172.16.120.1:1719
Mar 28 00:44:50.741: RASLib::RASSendRRQ: RRQ (seq# 12164)
                    sent to 172.16.120.1
Mar 28 00:44:50.745: RASLib::RASRecvData: successfully
                    rcvd message of length 52 from 172.16.120.1:1719
Mar 28 00:44:50.745: RASLib::RASRecvData: RCF (seq# 12164)
                    rcvd from [172.16.120.1:1719] on sock [0x6179E6A4]
Mar 28 00:45:18.433: ISDN Se0:23: RX <- SETUP pd = 8 callref = 0x02
Mar 28 00:45:18.433: Bearer Capability i = 0x8090A2
Mar 28 00:45:18.433: Channel ID i = 0xA98393
Mar 28 00:45:18.433: Calling Party Number i = 0x2180,
                    '9195552010', Plan:ISDN, Type:National
Mar 28 00:45:18.433: Called Party Number i = 0xA1,
                    '4085556400', Plan:ISDN, Type:National
Mar 28 00:45:18.437: ISDN Se0:23: TX -> CALL_PROC pd = 8 callref = 0x8002
Mar 28 00:45:18.437: Channel ID i = 0xA98393
Mar 28 00:45:18.437: ISDN Se0:23: TX -> ALERTING pd = 8 callref = 0x8002
Mar 28 00:45:18.437: cc_api_call_setup_ind (vdbPtr=0x61B9ADAC,
                    callInfo={called=4085556400,
                    calling=9195552010, fdest=0 peer_tag=1}, callID=0x61A088C4)
Mar 28 00:45:18.441: start_h323_accounting:
Mar 28 00:45:18.441: start_h323_ccapi_accounting: Error: Null userp
Mar 28 00:45:18.441: cc_process_call_setup_ind (event=0x61BB59E8)
                    handed call to app "clid_authen_collect"
Mar 28 00:45:18.441: App clid_authen_collect: Handling callID 52
Mar 28 00:45:18.441: callingNumber=9195552010, calledNumber=4085556400,
                    redirectNumber=
Mar 28 00:45:18.441: accountNumber=, finalDestFlag=0,
                    guid=1acb.27d8.98f4.006b.0000.0000.2071.a5e8
Mar 28 00:45:18.441: peer_tag=1
Mar 28 00:45:18.441: ccCallHandoff (callID=0x34)
```

```
Mar 28 00:45:18.445: ./acceptCall/
Mar 28 00:45:18.445: Accepting CallID=52
Mar 28 00:45:18.445: ccCallSetupAck (callID=0x34)
Mar 28 00:45:18.445: ccCallProceeding (callID=0x34, prog_ind=0x0)
Mar 28 00:45:18.445: ccCallConnect (callID=0x34)
Mar 28 00:45:18.445: ./ani/
Mar 28 00:45:18.445: ./dnis/
Mar 28 00:45:18.445: :[authenticate]
Mar 28 00:45:18.445: authenticate
Mar 28 00:45:18.445:     account=9195552010
Mar 28 00:45:18.445:     password=4085556400
Mar 28 00:45:18.445: start_authentication service: ivr tcl authentication
Mar 28 00:45:18.445: AAA: parse name= idb type=-1 tty=-1
Mar 28 00:45:18.445: AAA/MEMORY: create_user (0x61EBED14) user='9195552010'
    ruser='' port='' rem_addr=''
    authen_type=ASCII service=LOGIN priv=0
Mar 28 00:45:18.445: AAA/AUTHEN/START (2776990538):
    port='' list='h323' action=LOGIN service=LOGIN
Mar 28 00:45:18.445: AAA/AUTHEN/START (2776990538): found list h323
Mar 28 00:45:18.445: AAA/AUTHEN/START (2776990538): Method=LOCAL
Mar 28 00:45:18.445: AAA/AUTHEN (2776990538): User not found, end of method list
Mar 28 00:45:18.445: AAA/AUTHEN (2776990538): status = FAIL
Mar 28 00:45:18.445: voip_authenticate: Authentication server ERROR: server MSG:
Mar 28 00:45:18.445: AAA/MEMORY: free_user (0x61EBED14)
    user='9195552010' ruser='' port=''
    rem_addr='' authen_type=ASCII service=LOGIN priv=0
Mar 28 00:45:18.449: ISDN Se0:23: TX -> CONNECT pd = 8 callref = 0x8002
Mar 28 00:45:18.449: cid(52) ta_get_event returning authentication failed
Mar 28 00:45:18.449: :[callID]
Mar 28 00:45:18.449: ./puts/
Mar 28 00:45:18.449: cid( 52) running state get_account
Mar 28 00:45:18.453: TA_PromptCmd. CallID=52

Mar 28 00:45:18.453: ccCallApp (callID=0x34)
Mar 28 00:45:18.453: prompt and collect app got callID 52
Mar 28 00:45:18.453:     Playing prompt enter_account.au
Mar 28 00:45:18.453:     Prompt interrupt enabled
Mar 28 00:45:18.453:     No return on play complete
Mar 28 00:45:18.453:     Not matching against dial plan
Mar 28 00:45:18.453:     Abort key is * Termination key is #
Mar 28 00:45:18.453:     Matching against 1 patterns.
Mar 28 00:45:18.453:     Pattern .+
Mar 28 00:45:18.453: ccCallSetContext (callID=0x34, context=0x61A3AAA4)
Mar 28 00:45:18.453: ms_create() Iniz ply_timer
Mar 28 00:45:18.453: ccAssociateStream (callID=0x34 coder=5
    vad=0 recordFunc=0x0 evQ=0x61BE4420)
Mar 28 00:45:18.453: cc_API_call_associated (vdbPtr=0x61B9ADAC,
    callID=0x34, disp=0)
Mar 28 00:45:18.453: ms_associateDone(): xmitFunc = playFunc 0x60B8B358
Mar 28 00:45:18.453: ms_associateDone(): CallID 52 First Buf Play
    at 6d07h of enter_account.au
Mar 28 00:45:18.453: ms_associateDone() 6d07h, Tstart(ply: iSndDly 1000, pSnce 0)
Mar 28 00:45:18.545: ISDN Se0:23: RX <- CONNECT_ACK pd = 8 callref = 0x02
Mar 28 00:45:18.545: ISDN Se0:23: CALL_PROGRESS: CALL_CONNECTED
    call id 0x1B, bchan -1, dsl 0
Mar 28 00:45:19.453: $ $ms_process() >>ms_start_play()
Mar 28 00:45:19.453: ms_start_play() 6d07h mgdTstop(ply)
Mar 28 00:45:20.241: cc_api_call_digit_begin (vdbPtr=0x61B9ADAC,
    callID=0x34, digit=1,
    flags=0x1, timestamp=0xDB1154A6, expiration=0x0)
Mar 28 00:45:20.245: pcapp CallID 52 event CC_EV_CALL_DIGIT_BEGIN ignored
Mar 28 00:45:20.353: cc_api_call_digit (vdbPtr=0x61B9ADAC,
    callID=0x34, digit=1, duration=160) digit=1
```

```
Mar 28 00:45:20.353: ms_stop_play() call 52 mgdTstop at 6d07h
Mar 28 00:45:20.353: ms_stop_play(): Play Stopped at 6d07h
Mar 28 00:45:20.353: ccDisassociateStream (callID=0x34)
Mar 28 00:45:20.521: cc_api_call_digit_begin (vdbPtr=0x61B9ADAC,
      callID=0x34, digit=2,
      flags=0x1, timestamp=0xDB1154A6, expiration=0x0)
Mar 28 00:45:20.525: pcapp CallID 52 event CC_EV_CALL_DIGIT_BEGIN ignored
Mar 28 00:45:20.593: cc_api_call_digit (vdbPtr=0x61B9ADAC,
      callID=0x34, digit=2, duration=120) digit=2
Mar 28 00:45:20.781: cc_api_call_digit_begin (vdbPtr=0x61B9ADAC,
      callID=0x34, digit=3,
      flags=0x1, timestamp=0xDB1154A6, expiration=0x0)
Mar 28 00:45:20.785: pcapp CallID 52 event CC_EV_CALL_DIGIT_BEGIN ignored
Mar 28 00:45:20.853: cc_api_call_digit (vdbPtr=0x61B9ADAC,
      callID=0x34, digit=3, duration=120) digit=3
Mar 28 00:45:21.101: cc_api_call_digit_begin (vdbPtr=0x61B9ADAC,
      callID=0x34, digit=4,
      flags=0x1, timestamp=0xDB1154A6, expiration=0x0)
Mar 28 00:45:21.105: pcapp CallID 52 event CC_EV_CALL_DIGIT_BEGIN ignored
Mar 28 00:45:21.193: cc_api_call_digit (vdbPtr=0x61B9ADAC,
      callID=0x34, digit=4, duration=140) digit=4
Mar 28 00:45:21.553: cc_api_call_digit_begin (vdbPtr=0x61B9ADAC,
      callID=0x34, digit=#,
      flags=0x1, timestamp=0xDB1154A6, expiration=0x0)
Mar 28 00:45:21.553: pcapp CallID 52 event CC_EV_CALL_DIGIT_BEGIN ignored
Mar 28 00:45:21.673: cc_api_call_digit (vdbPtr=0x61B9ADAC,
      callID=0x34, digit=#, duration=170) digit=#
Mar 28 00:45:21.673: pcapp CallID 52 returning PCAPP_MATCHED. string=1234
Mar 28 00:45:21.673: ccCallAppReturn (callID=0x34)
Mar 28 00:45:21.673: ms_delete() invoking ms_stop_play() for just in case...
Mar 28 00:45:21.673: ms_stop_play() call 52 mgdTstop at 6d07h
Mar 28 00:45:21.673: ms_delete(): mc_delete_dynamicS() mc_delete_read()
Mar 28 00:45:21.673: cid(52) ta_get_event returning collect success
Mar 28 00:45:21.677: :[callID]
Mar 28 00:45:21.677: :/puts/
Mar 28 00:45:21.677: cid( 52) running state get_pin
Mar 28 00:45:21.677: ta_PromptCmd. CallID=52

Mar 28 00:45:21.677: ccCallApp (callID=0x34)
Mar 28 00:45:21.681: prompt and collect app got callID 52
Mar 28 00:45:21.681:     Playing prompt enter_pin.au
Mar 28 00:45:21.681:     Prompt interrupt enabled
Mar 28 00:45:21.681:     No return on play complete
Mar 28 00:45:21.681:     Not matching against dial plan
Mar 28 00:45:21.681:     Abort key is *     Termination key is #
Mar 28 00:45:21.681:     Matching against 1 patterns.
Mar 28 00:45:21.681:     Pattern .+
Mar 28 00:45:21.681: ccCallSetContext (callID=0x34, context=0x61A986B0)
Mar 28 00:45:21.681: ms_create() Iniz ply_timer
Mar 28 00:45:21.681: ccAssociateStream (callID=0x34 coder=5 vad=0
      recordFunc=0x0 evQ=0x61BE4420)
Mar 28 00:45:21.681: cc_api_call_associated (vdbPtr=0x61B9ADAC,
      callID=0x34, disp=0)
Mar 28 00:45:21.681: ms_associateDone(): xmitFunc = playFunc 0x60B8B358
Mar 28 00:45:21.681: ms_associateDone(): CallID 52 First Buf
      Play at 6d07h of enter_pin.au
Mar 28 00:45:21.681: ms_associateDone() 6d07h, Tstart(ply:
      iSndDly 1000, pSnce 0)
Mar 28 00:45:22.681: $ $ms_process() >>ms_start_play()
Mar 28 00:45:22.681: ms_start_play() 6d07h mgdTstop(ply)
Mar 28 00:45:23.433: cc_api_call_digit_begin (vdbPtr=0x61B9ADAC, callID=0x34,
      digit=5, flags=0x1, timestamp=0xDB1154A6, expiration=0x0)
Mar 28 00:45:23.433: pcapp CallID 52 event CC_EV_CALL_DIGIT_BEGIN ignored
```

```
Mar 28 00:45:23.533: cc_api_call_digit (vdbPtr=0x61B9ADAC,
    callID=0x34, digit=5, duration=150) digit=5
Mar 28 00:45:23.533: ms_stop_play() call 52 mgdTstop at 6d07h
Mar 28 00:45:23.533: ms_stop_play(): Play Stopped at 6d07h
Mar 28 00:45:23.533: ccDisassociateStream (callID=0x34)
Mar 28 00:45:23.693: cc_api_call_digit_begin (vdbPtr=0x61B9ADAC,
    callID=0x34, digit=6,
    flags=0x1, timestamp=0xDB1154A6, expiration=0x0)
Mar 28 00:45:23.693: pcapp CallID 52 event CC_EV_CALL_DIGIT_BEGIN ignored
Mar 28 00:45:23.793: cc_api_call_digit (vdbPtr=0x61B9ADAC,
    callID=0x34, digit=6, duration=150) digit=6
Mar 28 00:45:24.041: cc_api_call_digit_begin (vdbPtr=0x61B9ADAC,
    callID=0x34, digit=7, flags=0x1,
    timestamp=0xDB1154A6, expiration=0x0)
Mar 28 00:45:24.045: pcapp CallID 52 event CC_EV_CALL_DIGIT_BEGIN ignored
Mar 28 00:45:24.121: cc_api_call_digit (vdbPtr=0x61B9ADAC,
    callID=0x34, digit=7, duration=130) digit=7
Mar 28 00:45:24.321: cc_api_call_digit_begin (vdbPtr=0x61B9ADAC,
    callID=0x34, digit=8,
    flags=0x1, timestamp=0xDB1154A6, expiration=0x0)
Mar 28 00:45:24.325: pcapp CallID 52 event CC_EV_CALL_DIGIT_BEGIN ignored
Mar 28 00:45:24.421: cc_api_call_digit (vdbPtr=0x61B9ADAC,
    callID=0x34, digit=8, duration=150) digit=8
Mar 28 00:45:24.653: cc_api_call_digit_begin (vdbPtr=0x61B9ADAC,
    callID=0x34, digit=#,
    flags=0x1, timestamp=0xDB1154A6, expiration=0x0)
Mar 28 00:45:24.653: pcapp CallID 52 event CC_EV_CALL_DIGIT_BEGIN ignored
Mar 28 00:45:24.741: cc_api_call_digit (vdbPtr=0x61B9ADAC,
    callID=0x34, digit=#, duration=140) digit=#
Mar 28 00:45:24.745: pcapp CallID 52 returning PCAPP_MATCHED. string=5678
Mar 28 00:45:24.745: ccCallAppReturn (callID=0x34)
Mar 28 00:45:24.745: ms_delete() invoking ms_stop_play() for just in case...
Mar 28 00:45:24.745: ms_stop_play() call 52 mgdTstop at 6d07h
Mar 28 00:45:24.745: ms_delete(): mc_delete_dynamicS() mc_delete_read()
Mar 28 00:45:24.745: cid(52) ta_get_event returning collect success
Mar 28 00:45:24.745: :[callID]
Mar 28 00:45:24.745: :/puts/
Mar 28 00:45:24.745: cid( 52) running state authenticate
Mar 28 00:45:24.749: :[authenticate]
Mar 28 00:45:24.749: authenticate
Mar 28 00:45:24.749:     account=1234
Mar 28 00:45:24.749:     password=5678
Mar 28 00:45:24.749: start_authentication service: ivr tcl authentication
Mar 28 00:45:24.749: AAA: parse name= idb type=-1 tty=-1
Mar 28 00:45:24.749: AAA/MEMORY: create_user (0x61B0354C) user='1234' ruser=''
    port='' rem_addr='' authen_type=ASCII service=LOGIN priv=0
Mar 28 00:45:24.749: AAA/AUTHEN/START (3238629809): port=''
    list='h323' action=LOGIN service=LOGIN
Mar 28 00:45:24.749: AAA/AUTHEN/START (3238629809): found list h323
Mar 28 00:45:24.749: AAA/AUTHEN/START (3238629809): Method=LOCAL
Mar 28 00:45:24.749: AAA/AUTHEN (3238629809): status = GETPASS
Mar 28 00:45:24.749: AAA/AUTHEN/CONT (3238629809): continue_login (user='1234')
Mar 28 00:45:24.749: AAA/AUTHEN (3238629809): status = GETPASS
Mar 28 00:45:24.749: AAA/AUTHEN/CONT (3238629809): Method=LOCAL
Mar 28 00:45:24.749: AAA/AUTHEN (3238629809): status = PASS
Mar 28 00:45:24.749: AAA/MEMORY: free_user (0x61B0354C) user='1234' ruser=''
    port='' rem_addr='' authen_type=ASCII service=LOGIN priv=0
Mar 28 00:45:24.749: cid(52) ta_get_event returning authenticated
Mar 28 00:45:24.753: :[callID]
Mar 28 00:45:24.753: :/puts/
Mar 28 00:45:24.753: cid( 52) running state authen_pass
Mar 28 00:45:24.753: :/dnis/
Mar 28 00:45:24.753: :/did/
Mar 28 00:45:24.757: :[callID]
```



```
Mar 28 00:45:24.757: ./puts/
Mar 28 00:45:24.757: cid( 52) running state get_dest
Mar 28 00:45:24.757: ta_PromptCmd. CallID=52

Mar 28 00:45:24.757: ccCallApp (callID=0x34)
Mar 28 00:45:24.757: prompt and collect app got callID 52
Mar 28 00:45:24.757:     Playing prompt enter_destination.au
Mar 28 00:45:24.757:     Prompt interrupt enabled
Mar 28 00:45:24.757:     No return on play complete
Mar 28 00:45:24.757:     Matching against dial plan
Mar 28 00:45:24.757:     Abort key is *   Termination key is #
Mar 28 00:45:24.757:     Matching against 0 patterns.
Mar 28 00:45:24.757: ccCallSetContext (callID=0x34, context=0x61A3AAA4)
Mar 28 00:45:24.761: ms_create() Iniz ply_timer
Mar 28 00:45:24.761: ccAssociateStream (callID=0x34 coder=5 vad=0
    recordFunc=0x0 evQ=0x61BE4420)
Mar 28 00:45:24.761: cc_api_call_associated (vdbPtr=0x61B9ADAC,
    callID=0x34, disp=0)
Mar 28 00:45:24.761: ms_associateDone(): xmitFunc = playFunc 0x60B8B358
Mar 28 00:45:24.761: ms_associateDone(): CallID 52 First Buf Play
    at 6d07h of enter_destination.au
Mar 28 00:45:24.761: ms_associateDone() 6d07h, Tstart(ply: iSndDly 1000, pSnce 0)
Mar 28 00:45:25.761: $ $ms_process() >>ms_start_play()
Mar 28 00:45:25.761: ms_start_play() 6d07h mgdTstop(ply)
Mar 28 00:45:29.393: cc_api_call_digit_begin (vdbPtr=0x61B9ADAC,
    callID=0x34, digit=6,
    flags=0x1, timestamp=0xDB1154A6, expiration=0x0)
Mar 28 00:45:29.393: pcapp CallID 52 event CC_EV_CALL_DIGIT_BEGIN ignored
Mar 28 00:45:29.573: cc_api_call_digit (vdbPtr=0x61B9ADAC,
    callID=0x34, digit=6, duration=230) digit=6
Mar 28 00:45:29.573: ms_stop_play() call 52 mgdTstop at 6d07h
Mar 28 00:45:29.573: ms_stop_play(): Play Stopped at 6d07h
Mar 28 00:45:29.573: ccDisassociateStream (callID=0x34)
Mar 28 00:45:29.801: cc_api_call_digit_begin (vdbPtr=0x61B9ADAC,
    callID=0x34, digit=4,
    flags=0x1, timestamp=0xDB1154A6, expiration=0x0)
Mar 28 00:45:29.805: pcapp CallID 52 event CC_EV_CALL_DIGIT_BEGIN ignored
Mar 28 00:45:29.921: cc_api_call_digit (vdbPtr=0x61B9ADAC, callID=0x34,
    digit=4, duration=170) digit=4
Mar 28 00:45:30.181: cc_api_call_digit_begin (vdbPtr=0x61B9ADAC,
    callID=0x34, digit=0,
    flags=0x1, timestamp=0xDB1154A6, expiration=0x0)
Mar 28 00:45:30.185: pcapp CallID 52 event CC_EV_CALL_DIGIT_BEGIN ignored
Mar 28 00:45:30.281: cc_api_call_digit (vdbPtr=0x61B9ADAC, callID=0x34,
    digit=0, duration=150) digit=0
Mar 28 00:45:30.533: cc_api_call_digit_begin (vdbPtr=0x61B9ADAC,
    callID=0x34, digit=0,
    flags=0x1, timestamp=0xDB1154A6, expiration=0x0)
Mar 28 00:45:30.533: pcapp CallID 52 event CC_EV_CALL_DIGIT_BEGIN ignored
Mar 28 00:45:30.673: cc_api_call_digit (vdbPtr=0x61B9ADAC, callID=0x34,
    digit=0, duration=190) digit=0
Mar 28 00:45:30.673: pcapp CallID 52 returning PCAPP_MATCHED. string=6400
Mar 28 00:45:30.673: ccCallAppReturn (callID=0x34)
Mar 28 00:45:30.673: ms_delete() invoking ms_stop_play() for just in case...
Mar 28 00:45:30.673: ms_stop_play() call 52 mgdTstop at 6d07h
Mar 28 00:45:30.673: ms_delete(): mc_delete_dynamicS() mc_delete_read()
Mar 28 00:45:30.673: cid(52) ta_get_event returning collect success
Mar 28 00:45:30.677: :[callID]
Mar 28 00:45:30.677: ./puts/
Mar 28 00:45:30.677: cid( 52) running state place_call
Mar 28 00:45:30.677: :[placeCall]
Mar 28 00:45:30.677: Placing call for callID 52 to destination=6400
Mar 28 00:45:30.677: ccCallApp (callID=0x34)
```

Mar 28 00:45:30.681: placecall CallID 52 got event CC_EV_CALL_HANDOFF
Mar 28 00:45:30.681: ccCallSetContext (callID=0x34, context=0x61EBED14)
Mar 28 00:45:30.681: Matched peers(1)
Mar 28 00:45:30.681: placecall pc_setupPeer cid(52), destPat(4085556400), matched(10),
prefix(), peer(61C088AC)
Mar 28 00:45:30.681: ccCallSetupRequest (Inbound call = 0x34, outbound peer =2, dest=,
params=0x61A650F8 mode=0, *callID=0x61BC6EF0)
Mar 28 00:45:30.681: callingNumber=9195552010, calledNumber=4085556400, redirectNumber=
Mar 28 00:45:30.681: accountNumber=1234, finalDestFlag=0,
guid=1acb.27d8.98f4.006b.0000.0000.2071.a5e8
Mar 28 00:45:30.681: peer_tag=2
Mar 28 00:45:30.681: ccIFCallSetupRequest: (vdbPtr=0x6174EC64, dest=,
callParams={called=4085556400,
calling=9195552010, fdest=0, voice_peer_tag=2}, mode=0x0)
Mar 28 00:45:30.681: ccCallSetContext (callID=0x35, context=0x61C72B0C)
Mar 28 00:45:30.681: placecall cid(52) state change PC_CS_INIT to PC_CS_CALL_SETTING
Mar 28 00:45:30.681: RASlib::ras_sendto: msg length 115 from 172.16.120.2:49831
to 172.16.120.1:1719
Mar 28 00:45:30.685: RASlib::RASSendARQ: ARQ (seq# 12165) sent to 172.16.120.1
Mar 28 00:45:30.685: start_h323_accounting:
Mar 28 00:45:30.685: start_h323_ccapi_accounting: Error: Null userp
Mar 28 00:45:30.689: RASlib::RASRecvData: successfully rcvd message
of length 7 from 172.16.120.1:1719
Mar 28 00:45:30.689: RASlib::RASRecvData: RIP (seq# 12165) rcvd
from [172.16.120.1:1719] on sock[6179E6A4]
Mar 28 00:45:30.705: RASlib::RASRecvData: successfully rcvd message
of length 24 from 172.16.120.1:1719
Mar 28 00:45:30.705: RASlib::RASRecvData: ACF (seq# 12165) rcvd from
[172.16.120.1:1719] on sock [0x6179E6A4]
Mar 28 00:45:31.713: cc_api_call_alert (vdbPtr=0x6174EC64, callID=0x35,
prog_ind=0x8, sig_ind=0x1)
Mar 28 00:45:31.713: placecall CallID 53 got event CC_EV_CALL_ALERT
Mar 28 00:45:31.713: ccConferenceCreate (confID=0x61BC6F40, callID1=0x34,
callID2=0x35, tag=0x0)
Mar 28 00:45:31.713: cc_api_bridge_done (confID=0x14, srcIF=0x6174EC64, srcCallID=0x35,
dstCallID=0x34, disposition=0, tag=0x0)
Mar 28 00:45:31.713: placecall cid(52) state change PC_CS_CALL_SETTING to
PC_CS_CONFERENCING_ALERT
Mar 28 00:45:31.713: cc_api_bridge_done (confID=0x14, srcIF=0x61B9ADAC, srcCallID=0x34,
dstCallID=0x35, disposition=0, tag=0x0)
Mar 28 00:45:31.713: cc_api_caps_ind (dstVdbPtr=0x6174EC64, dstCallId=0x35,
srcCallId=0x34, caps={codec=0xEBF7, fax_rate=0xFF,
vad=0x3, modem=0x3 codec_bytes=48, signal_type=2})
Mar 28 00:45:31.717: placecall CallID 52 got event CC_EV_CONF_CREATE_DONE
Mar 28 00:45:31.717: placecall cid(52) state change PC_CS_CONFERENCING_ALERT
to PC_CS_CONFERENCE_ALERT
Mar 28 00:45:32.321: cc_api_caps_ind (dstVdbPtr=0x61B9ADAC, dstCallId=0x34,
srcCallId=0x35, caps={codec=0x4, fax_rate=0x2, vad=0x2, modem=0x1
codec_bytes=20, signal_type=0})
Mar 28 00:45:32.321: cc_api_caps_ack (dstVdbPtr=0x61B9ADAC, dstCallId=0x34,
srcCallId=0x35, caps={codec=0x4, fax_rate=0x2, vad=0x2, modem=0x1
codec_bytes=20, signal_type=0})
Mar 28 00:45:32.325: cc_api_caps_ack (dstVdbPtr=0x6174EC64, dstCallId=0x35,
srcCallId=0x34, caps={codec=0x4, fax_rate=0x2, vad=0x2, modem=0x1
codec_bytes=20, signal_type=0})
Mar 28 00:45:35.745: RASlib::ras_sendto: msg length 76 from 172.16.120.2:49831
to 172.16.120.1:1719
Mar 28 00:45:35.745: RASlib::RASSendRRQ: RRQ (seq# 12166) sent to 172.16.120.1
Mar 28 00:45:35.749: RASlib::RASRecvData: successfully rcvd message of
length 52 from 172.16.120.1:1719
Mar 28 00:45:35.749: RASlib::RASRecvData: RCF (seq# 12166) rcvd from
[172.16.120.1:1719] on sock [0x6179E6A4]
Mar 28 00:45:40.673: cc_api_call_digit (vdbPtr=0x61B9ADAC, callID=0x34,
digit=T, duration=0)

Mar 28 00:45:40.673: placecall CallID 52 got event CC_EV_CALL_DIGIT
Mar 28 00:45:43.845: cc_api_call_connected(vdbPtr=0x6174EC64, callID=0x35)
Mar 28 00:45:43.845: placecall CallID 53 got event CC_EV_CALL_CONNECTED
Mar 28 00:45:43.845: placecall CallID 52 returning PLACECALL_ACTIVE.
Mar 28 00:45:43.845: ccCallAppReturn (callID=0x34)
Mar 28 00:45:43.845: pCall(0x61B00C24), settlement_credit_time=0
Mar 28 00:45:43.845: ccCallSetContext (callID=0x35, context=0x61B00C24)
Mar 28 00:45:43.845: cid(52) ta_get_event returning active
Mar 28 00:45:43.845: :[callID]
Mar 28 00:45:43.845: :/puts/
Mar 28 00:45:43.845: cid(52) running state active
Mar 28 00:45:43.849: :/creditTimeLeft/
Mar 28 00:45:43.849: :[waitEvent]
Mar 28 00:45:43.849: Waiting Event for callID 52
Mar 28 00:45:51.269: cc_api_call_disconnected(vdbPtr=0x6174EC64, callID=0x35, cause=0x10)
Mar 28 00:45:51.273: ccConferenceDestroy (confID=0x14, tag=0x0)
Mar 28 00:45:51.273: cc_api_bridge_drop_done (confID=0x14, srcIF=0x6174EC64,
srcCallID=0x35, dstCallID=0x34, disposition=0 tag=0x0)
Mar 28 00:45:51.273: cc_api_bridge_drop_done (confID=0x14, srcIF=0x61B9ADAC,
srcCallID=0x34,
dstCallID=0x35, disposition=0 tag=0x0)
Mar 28 00:45:51.273: ccCallDisconnect (callID=0x35, cause=0x10 tag=0x0)
Mar 28 00:45:51.273: RASlib::ras_sendto: msg length 76 from 172.16.120.2:49831
to 172.16.120.1:1719
Mar 28 00:45:51.273: RASlib::RASSendDRQ: DRQ (seq# 12167) sent to 172.16.120.1
Mar 28 00:45:51.277: RASlib::RASRecvData: successfully rcvd message of length
3 from 172.16.120.1:1719
Mar 28 00:45:51.277: RASlib::RASRecvData: DCF (seq# 12167) rcvd from
[172.16.120.1:1719] on sock [0x6179E6A4]
Mar 28 00:45:51.277: stop_h323_ccapi_accounting: Error: Null userp
Mar 28 00:45:51.281: cc_api_call_disconnect_done(vdbPtr=0x6174EC64,
callID=0x35, disp=0, tag=0x0)
Mar 28 00:45:51.281: cid(53) outgoing disconnected
Mar 28 00:45:51.281: cid(52) ta_get_event returning outgoing disconnected
Mar 28 00:45:51.281: ta_WaitEventCmd(): ta_get_event(event [outgoing disconnected])
Mar 28 00:45:51.281: TCL script eval for callID 52 completed. code=OK
Mar 28 00:45:51.281: ccCallDisconnect (callID=0x34, cause=0x10 tag=0x0)
Mar 28 00:45:51.297: stop_h323_ccapi_accounting: Error: Null userp
Mar 28 00:45:51.297: cc_api_call_disconnect_done(vdbPtr=0x61B9ADAC,
callID=0x34, disp=0, tag=0x0)
Mar 28 00:45:51.305: %ISDN-6-DISCONNECT: Interface Serial0:18 disconnected
from 9195552010 , call lasted 32 seconds
Mar 28 00:45:51.305: ISDN Se0:23: TX -> DISCONNECT pd = 8 callref = 0x8002
Mar 28 00:45:51.305: Cause i = 0x8090 - Normal call clearing
Mar 28 00:45:51.353: ISDN Se0:23: RX <- RELEASE pd = 8 callref = 0x02
Mar 28 00:45:51.353: ISDN Se0:23: TX -> RELEASE_COMP pd = 8 callref = 0x8002
Mar 28 00:45:51.365: %LINK-3-UPDOWN: Interface Serial0:18, changed state to down
Mar 28 00:46:20.748: RASlib::ras_sendto: msg length 76 from 172.16.120.2:49831
to 172.16.120.1:1719
Mar 28 00:46:20.748: RASlib::RASSendRRQ: RRQ (seq# 12168) sent to 172.16.120.1
Mar 28 00:46:20.752: RASlib::RASRecvData: successfully rcvd message of
length 52 from 172.16.120.1:1719
Mar 28 00:46:20.752: RASlib::RASRecvData: RCF (seq# 12168) rcvd from
[172.16.120.1:1719] on sock [0x6179E6A4]

Raleigh5300A#
Raleigh5300A#

Raleigh5300A#**show call active voice**

GENERIC:
SetupTime=54456184 ms
Index=1
PeerAddress=9195552010
PeerSubAddress=

PeerId=1
PeerIfIndex=56
LogicalIfIndex=26
ConnectTime=54456185
CallDuration=00:00:44
CallState=4
CallOrigin=2
ChargedUnits=0
InfoType=2
TransmitPackets=1475
TransmitBytes=75244
ReceivePackets=318
ReceiveBytes=10176
TELE:
ConnectionId=[0x1ACB27D8 0x98F4006F 0x0 0x20755AB8]
TxDuration=29800 ms
VoiceTxDuration=6360 ms
FaxTxDuration=0 ms
CoderTypeRate=g729r8
NoiseLevel=-55
ACOMLevel=0
OutSignalLevel=-42
InSignalLevel=-56
InfoActivity=2
ERLLevel=15
SessionTarget=
ImgPages=0
GENERIC:
SetupTime=54457502 ms
Index=1
PeerAddress=4085556400
PeerSubAddress=
PeerId=2
PeerIfIndex=57
LogicalIfIndex=0
ConnectTime=54458807
CallDuration=00:00:18
CallState=4
CallOrigin=1
ChargedUnits=0
InfoType=2
TransmitPackets=318
TransmitBytes=6360
ReceivePackets=1121
ReceiveBytes=22420
VOIP:
ConnectionId[0x1ACB27D8 0x98F4006F 0x0 0x20755AB8]
RemoteIPAddress=172.16.110.2
RemoteUDPPort=17942
RoundTripDelay=2 ms
SelectedQoS=best-effort
tx_DtmfRelay=inband-voice
SessionProtocol=cisco
SessionTarget=ras
OnTimeRvPayout=15900
GapFillWithSilence=0 ms
GapFillWithPrediction=0 ms
GapFillWithInterpolation=0 ms
GapFillWithRedundancy=0 ms
HiWaterPayoutDelay=70 ms
LoWaterPayoutDelay=50 ms
ReceiveDelay=50 ms
LostPackets=0
EarlyPackets=0

LatePackets=0
VAD = enabled
CoderTypeRate=g729r8
CodecBytes=20
SignalingType=cas
Raleigh5300A#

Raleigh5300A#**show call active voice brief**

<ID>: <start>hs.<index> +<connect> pid:<peer_id> <dir> <addr> <state>
dur hh:mm:ss tx:<packets>/<bytes> rx:<packets>/<bytes> <state>
IP <ip>:<udp> rtt:<time>ms pl:<play>/<gap>ms lost:<lost>/<early>/<late>
delay:<last>/<min>/<max>ms <codec>
FR <protocol><y/n><y/n><y/n><on/off> [int dlci cid] vad: dtmf: seq:
sig: <codec> (payload size)
Tele <int>: tx:<tot>/<v>/<fax>ms <codec> noise:<l> acom:<l> i/o:<l>/<l> dBm

6F : 54456184hs.1 +1 pid:1 Answer 9195552010 active
dur 00:00:40 tx:1279/73076 rx:172/5504
Tele 0:D:54: tx:25890/3440/0ms g729r8 noise:-55 acom:0 i/0:-55/-41 dBm

6F : 54457502hs.1 +1305 pid:2 Originate 4085556400 active
dur 00:00:14 tx:172/3440 rx:925/18500
IP 172.16.110.2:17942 rtt:2ms pl:15900/0ms lost:0/0/0 delay:50/50/70ms g729r8

[Saída SanJose5300A](#)

SanJose5300A#**show gateway**

Gateway SJ5300A@cisco.com is registered to Gatekeeper SJgk1

Alias list (CLI configured)

H323-ID SJ5300A@cisco.com

Alias list (last RCF)

H323-ID SJ5300A@cisco.com

H323 resource thresholding is Disabled

SanJose5300A#**show log**

Syslog logging: enabled (0 messages dropped, 0 flushes, 0 overruns)

Console logging: level debugging, 1787 messages logged

Monitor logging: level debugging, 0 messages logged

Buffer logging: level debugging, 1787 messages logged

Trap logging: level informational, 97 message lines logged

Log Buffer (50000 bytes):

Mar 28 00:45:25.585: RASlib::ras_sendto: msg length 74 from
172.16.110.2:52521 to 172.16.110.1:1719
Mar 28 00:45:25.585: RASLib::RASSendRRQ: RRQ (seq# 12137) sent to 172.16.110.1
Mar 28 00:45:25.589: RASLib::RASRecvData: successfully rcvd message of
length 52 from 172.16.110.1:1719
Mar 28 00:45:25.589: RASLib::RASRecvData: RCF (seq# 12137) rcvd from
[172.16.110.1:1719] on sock [0x61752218]
Mar 28 00:45:30.705: RASlib::ras_sendto: msg length 122 from
172.16.110.2:52521 to 172.16.110.1:1719
Mar 28 00:45:30.705: RASLib::RASSendARQ: ARQ (seq# 12138) sent to 172.16.110.1
Mar 28 00:45:30.709: RASLib::RASRecvData: successfully rcvd message
of length 24 from 172.16.110.1:1719

Mar 28 00:45:30.713: RASLib::RASRecvData: ACF (seq# 12138) rcvd from
[172.16.110.1:1719] on sock [0x61752218]
Mar 28 00:45:30.713: cc_api_call_setup_ind (vdbPtr=0x616F8D2C,
callInfo={called=408#4085556400,
calling=9195552010, fdest=1 peer_tag=2}, callID=0x6199B54C)
Mar 28 00:45:30.713: cc_process_call_setup_ind (event=0x619B2D6C) handed
call to app "SESSION"
Mar 28 00:45:30.713: sess_appl: ev(23=CC_EV_CALL_SETUP_IND), cid(39), disp(0)
Mar 28 00:45:30.713: ccCallSetContext (callID=0x27, context=0x61A60F64)
Mar 28 00:45:30.713: ssaCallSetupInd finalDest cllng(9195552010),
clled(408#4085556400)
Mar 28 00:45:30.713: ssaSetupPeer cid(39) peer list: tag(1) called
number (408#4085556400)
Mar 28 00:45:30.713: ssaSetupPeer cid(39), destPat(408#4085556400),
matched(11), prefix(6), peer(61A03B88)
Mar 28 00:45:30.713: ccCallProceeding (callID=0x27, prog_ind=0x0)
Mar 28 00:45:30.713: ccCallSetupRequest (Inbound call = 0x27, outbound peer =1, dest=,
params=0x61A60F78 mode=0, *callID=0x619BB9F0)
Mar 28 00:45:30.713: callingNumber=9195552010, calledNumber=408#4085556400,
redirectNumber=
Mar 28 00:45:30.713: accountNumber=, finalDestFlag=1,
guid=1acb.27d8.98f4.006b.0000.0000.2071.a5e8
Mar 28 00:45:30.713: peer_tag=1
Mar 28 00:45:30.713: ccIFCallSetupRequest: (vdbPtr=0x619AC884, dest=,
callParams={called=408#4085556400,
calling=9195552010, fdest=1, voice_peer_tag=1}, mode=0x0)
Mar 28 00:45:30.717: ccCallSetContext (callID=0x28, context=0x6194F3AC)
Mar 28 00:45:30.717: cc_api_call_proceeding(vdbPtr=0x619AC884, callID=0x28,
prog_ind=0x0)
Mar 28 00:45:30.717: sess_appl: ev(20=CC_EV_CALL_PROCEEDING), cid(40), disp(0)
Mar 28 00:45:30.717: ssaTraceSct: cid(40)st(1)oldst(0)cfid(-1)csz(0)
in(0)fDest(0)-cid2(39)st2(1)oldst2(0)
Mar 28 00:45:30.717: ssaIgnore cid(40), st(1),oldst(1), ev(20)
Mar 28 00:45:31.701: cc_api_call_alert(vdbPtr=0x619AC884, callID=0x28,
prog_ind=0x8, sig_ind=0x1)
Mar 28 00:45:31.701: sess_appl: ev(7=CC_EV_CALL_ALERT), cid(40), disp(0)
Mar 28 00:45:31.701: ssaTraceSct: cid(40)st(1)oldst(1)cfid(-1)csz(0)
in(0)fDest(0)-cid2(39)st2(1)oldst2(0)
Mar 28 00:45:31.701: ccCallAlert (callID=0x27, prog_ind=0x8, sig_ind=0x1)
Mar 28 00:45:31.701: ccConferenceCreate (confID=0x619BBA38, callID1=0x27,
callID2=0x28, tag=0x0)
Mar 28 00:45:31.701: cc_api_bridge_done (confID=0x14, srcIF=0x616F8D2C, srcCallID=0x27,
dstCallID=0x28, disposition=0, tag=0x0)
Mar 28 00:45:31.705: cc_api_bridge_done (confID=0x14, srcIF=0x619AC884, srcCallID=0x28,
dstCallID=0x27, disposition=0, tag=0x0)
Mar 28 00:45:31.705: cc_api_caps_ind (dstVdbPtr=0x616F8D2C, dstCallId=0x27,
srcCallId=0x28,caps={codec=0xEBF7, fax_rate=0xFF,
vad=0x3, modem=0x3 codec_bytes=1637472312, signal_type=2})
Mar 28 00:45:31.705: sess_appl: ev(28=CC_EV_CONF_CREATE_DONE), cid(39), disp(0)
Mar 28 00:45:31.705: ssaTraceSct: cid(39)st(3)oldst(0)cfid(20)csz(0)
in(1)fDest(1)-cid2(40)st2(3)oldst2(1)
Mar 28 00:45:32.517: cc_api_caps_ind (dstVdbPtr=0x619AC884, dstCallId=0x28,
srcCallId=0x27,caps={codec=0x4, fax_rate=0x2, vad=0x2, modem=0x1
codec_bytes=20, signal_type=0})
Mar 28 00:45:32.517: cc_api_caps_ack (dstVdbPtr=0x619AC884, dstCallId=0x28,
srcCallId=0x27, caps={codec=0x4, fax_rate=0x2, vad=0x2, modem=0x1
codec_bytes=20, signal_type=0})
Mar 28 00:45:32.521: cc_api_caps_ack (dstVdbPtr=0x616F8D2C, dstCallId=0x27,
srcCallId=0x28,caps={codec=0x4, fax_rate=0x2, vad=0x2, modem=0x1
codec_bytes=20, signal_type=0})
Mar 28 00:45:43.834: cc_api_call_connected(vdbPtr=0x619AC884, callID=0x28)
Mar 28 00:45:43.834: sess_appl: ev(8=CC_EV_CALL_CONNECTED), cid(40), disp(0)
Mar 28 00:45:43.834: ssaTraceSct: cid(40)st(4)oldst(1)cfid(20)csz(0)
in(0)fDest(0)-cid2(39)st2(4)oldst2(3)

Mar 28 00:45:43.834: ccCallConnect (callID=0x27)
Mar 28 00:45:43.834: ssaFlushPeerTagQueue cid(39) peer list: (empty)
Mar 28 00:45:51.258: cc_api_call_disconnected(vdbPtr=0x619AC884,
callID=0x28, cause=0x10)
Mar 28 00:45:51.258: sess_appl: ev(12=CC_EV_CALL_DISCONNECTED), cid(40), disp(0)
Mar 28 00:45:51.258: ssaTraceSct: cid(40)st(5)oldst(4)cfid(20)csz(0)
in(0)fDest(0)-cid2(39)st2(5)oldst2(3)
Mar 28 00:45:51.258: ssa: Disconnected cid(40) state(5) cause(0x10)
Mar 28 00:45:51.258: ccConferenceDestroy (confID=0x14, tag=0x0)
Mar 28 00:45:51.258: cc_api_bridge_drop_done (confID=0x14, srcIF=0x616F8D2C,
srcCallID=0x27, dstCallID=0x28, disposition=0 tag=0x0)
Mar 28 00:45:51.258: cc_api_bridge_drop_done (confID=0x14, srcIF=0x619AC884,
srcCallID=0x28, dstCallID=0x27, disposition=0 tag=0x0)
Mar 28 00:45:51.258: sess_appl: ev(29=CC_EV_CONF_DESTROY_DONE), cid(39), disp(0)
Mar 28 00:45:51.258: ssaTraceSct: cid(39)st(6)oldst(3)cfid(20)csz(0)
in(1)fDest(1)-cid2(40)st2(6)oldst2(5)
Mar 28 00:45:51.258: ccCallDisconnect (callID=0x27, cause=0x10 tag=0x0)
Mar 28 00:45:51.258: ccCallDisconnect (callID=0x28, cause=0x10 tag=0x0)
Mar 28 00:45:51.262: RASLib::ras_sendto: msg length 76 from 172.16.110.2:52521
to 172.16.110.1:1719
Mar 28 00:45:51.262: RASLib::RASSendDRQ: DRQ (seq# 12139) sent to 172.16.110.1
Mar 28 00:45:51.266: RASLib::RASRecvData: successfully rcvd message of
length 3 from 172.16.110.1:1719
Mar 28 00:45:51.266: RASLib::RASRecvData: DCF (seq# 12139) rcvd from
[172.16.110.1:1719] on sock [0x61752218]
Mar 28 00:45:51.266: cc_api_call_disconnect_done(vdbPtr=0x0,
callID=0x27, disp=0, tag=0x0)
Mar 28 00:45:51.270: sess_appl: ev(13=CC_EV_CALL_DISCONNECT_DONE), cid(39), disp(0)
Mar 28 00:45:51.270: ssaTraceSct: cid(39)st(7)oldst(6)cfid(-1)csz(0)
in(1)fDest(1)-cid2(40)st2(7)oldst2(5)
Mar 28 00:45:51.278: cc_api_call_disconnect_done(vdbPtr=0x619AC884,
callID=0x28, disp=0, tag=0x61726DDC)
Mar 28 00:45:51.278: sess_appl: ev(13=CC_EV_CALL_DISCONNECT_DONE), cid(40), disp(0)
Mar 28 00:45:51.278: ssaTraceSct: cid(40)st(7)oldst(5)cfid(-1)csz(1)in(0)fDest(0)
Mar 28 00:46:10.590: RASLib::ras_sendto: msg length 74 from 172.16.110.2:52521
to 172.16.110.1:1719
Mar 28 00:46:10.590: RASLib::RASSendRRQ: RRQ (seq# 12140) sent to 172.16.110.1
Mar 28 00:46:10.594: RASLib::RASRecvData: successfully rcvd message of
length 52 from 172.16.110.1:1719
Mar 28 00:46:10.594: RASLib::RASRecvData: RCF (seq# 12140) rcvd from
[172.16.110.1:1719] on sock [0x61752218]
Mar 28 00:46:55.595: RASLib::ras_sendto: msg length 74 from
172.16.110.2:52521 to 172.16.110.1:1719
Mar 28 00:46:55.595: RASLib::RASSendRRQ: RRQ (seq# 12141) sent to 172.16.110.1
Mar 28 00:46:55.599: RASLib::RASRecvData: successfully rcvd
message of length 52 from 172.16.110.1:1719
Mar 28 00:46:55.599: RASLib::RASRecvData: RCF (seq# 12141) rcvd
from [172.16.110.1:1719] on sock [0x61752218]
Mar 28 00:47:40.600: RASLib::ras_sendto: msg length 74 from
172.16.110.2:52521 to 172.16.110.1:1719
Mar 28 00:47:40.600: RASLib::RASSendRRQ: RRQ (seq# 12142) sent to 172.16.110.1
Mar 28 00:47:40.604: RASLib::RASRecvData: successfully rcvd
message of length 52 from 172.16.110.1:1719
Mar 28 00:47:40.604: RASLib::RASRecvData: RCF (seq# 12142) rcvd
from [172.16.110.1:1719] on sock [0x61752218]
Mar 28 00:48:25.604: RASLib::ras_sendto: msg length 74 from 172.16.110.2:52521
to 172.16.110.1:1719
Mar 28 00:48:25.604: RASLib::RASSendRRQ: RRQ (seq# 12143) sent to 172.16.110.1
Mar 28 00:48:25.608: RASLib::RASRecvData: successfully rcvd message
of length 52 from 172.16.110.1:1719
Mar 28 00:48:25.608: RASLib::RASRecvData: RCF (seq# 12143) rcvd from
[172.16.110.1:1719] on sock [0x61752218]
SanJose5300A#
SanJose5300A#

SanJose5300A#

SanJose5300A#**show call active voice brief**

<ID>: <start>hs.<index> +<connect> pid:<peer_id> <dir> <addr> <state>
dur hh:mm:ss tx:<packets>/<bytes> rx:<packets>/<bytes> <state>
IP <ip>:<udp> rtt:<time>ms pl:<play>/<gap>ms lost:<lost>/<early>/<late>
delay:<last>/<min>/<max>ms <codec>
FR <protocol><y/n><y/n><y/n><on/off> [int dlci cid] vad: dtmf: seq:
sig: <codec> (payload size)
Tele <int>: tx:<tot>/<v>/<fax>ms <codec> noise:<l> acom:<l> i/o:<l>/<l> dBm

6F : 54422877hs.1 +1301 pid:2 Answer 9195552010 active
dur 00:00:38 tx:2122/42440 rx:836/16720
IP 172.16.120.2:16938 rtt:2ms pl:16720/0ms lost:0/0/0 delay:30/30/70ms g729r8

6F : 54422895hs.1 +1283 pid:1 Originate 408#4085556400 active
dur 00:00:38 tx:836/-8996 rx:2143/68576
Tele 0:1 (42): tx:50050/42860/0ms g729r8 noise:-66 acom:0 i/o:-40/-71 dBm

SanJose5300A#**show call active voice**

GENERIC:
SetupTime=54422877 ms
Index=1
PeerAddress=9195552010
PeerSubAddress=
PeerId=2
PeerIfIndex=17
LogicalIfIndex=0
ConnectTime=54424178
CallDuration=00:00:44
CallState=4
CallOrigin=2
ChargedUnits=0
InfoType=2
TransmitPackets=2414
TransmitBytes=48280
ReceivePackets=836
ReceiveBytes=16720
VOIP:
ConnectionId[0x1ACB27D8 0x98F4006F 0x0 0x20755AB8]
RemoteIPAddress=172.16.120.2
RemoteUDPPort=16938
RoundTripDelay=2 ms
SelectedQoS=best-effort
tx_DtmfRelay=inband-voice
SessionProtocol=cisco
SessionTarget=
OnTimeRvPayout=16720
GapFillWithSilence=0 ms
GapFillWithPrediction=0 ms
GapFillWithInterpolation=0 ms
GapFillWithRedundancy=0 ms
HiWaterPayoutDelay=70 ms
LoWaterPayoutDelay=30 ms
ReceiveDelay=30 ms
LostPackets=0
EarlyPackets=0
LatePackets=0
VAD = enabled
CoderTypeRate=g729r8
CodecBytes=20


```

SignalingType=cas
  GENERIC:
SetupTime=54422895 ms
Index=1
PeerAddress=408#4085556400
PeerSubAddress=
PeerId=1
PeerIfIndex=16
LogicalIfIndex=13
ConnectTime=54424178
CallDuration=00:00:44
CallState=4
CallOrigin=1
ChargedUnits=0
InfoType=2
TransmitPackets=836
TransmitBytes=-12488
ReceivePackets=2434
ReceiveBytes=77888
TELE:
ConnectionId=[0x1ACB27D8 0x98F4006F 0x0 0x20755AB8]
TxDuration=55880 ms
VoiceTxDuration=48690 ms
FaxTxDuration=0 ms
CoderTypeRate=g729r8
NoiseLevel=-66
ACOMLevel=0
OutSignalLevel=-70
InSignalLevel=-42
InfoActivity=2
ERLLevel=15
SessionTarget=
ImgPages=0
SanJose5300A#

```

Saída de Raleigh3600A

Raleigh3640A#**show debug**

H.323 RAS:

H.323 RAS Messages debugging is on

Raleigh3640A#und all

Raleigh3640A#**show gatekeeper endpoint**

GATEKEEPER ENDPOINT REGISTRATION

=====

CallSignalAddr	Port	RASSignalAddr	Port	Zone Name	Type	F
172.16.120.2	1720	172.16.120.2	49831	RALgk1	VOIP-GW	

H323-ID: RAL5300A@cisco.com

Total number of active registrations = 1

Raleigh3640A#**show gatekeeper gw-type-prefix**

GATEWAY TYPE PREFIX TABLE

=====

Prefix: 408#*

Prefix: 919#*

Zone RALgk1 master gateway list:

172.16.120.2:1720 RAL5300A

Raleigh3640A#**show log**

Syslog logging: enabled (0 messages dropped, 0 flushes, 0 overruns)
Console logging: level debugging, 277 messages logged
Monitor logging: level debugging, 0 messages logged
Buffer logging: level debugging, 277 messages logged
Trap logging: level informational, 107 message lines logged

Log Buffer (50000 bytes):

Mar 28 00:44:50.742: RASLib::RASRecvData: successfully rcvd
message of length 76 from 172.16.120.2:49831
Mar 28 00:44:50.742: RASLib::RASRecvData: RRQ (seq# 12164)
rcvd from [172.16.120.2:49831] on sock [0x60F2F9A0]
Mar 28 00:44:50.746: RASLib::ras_sendto: msg length 52
from 172.16.120.1:1719 to 172.16.120.2:49831
Mar 28 00:44:50.746: RASLib::RASSendRCF: RCF (seq# 12164)
sent to 172.16.120.2
Mar 28 00:45:30.682: RASLib::RASRecvData: successfully
rcvd message of length 115 from 172.16.120.2:49831
Mar 28 00:45:30.686: RASLib::RASRecvData: ARQ (seq# 12165)
rcvd from [172.16.120.2:49831] on sock [0x60F2F9A0]
RASLib::parse_arq_nonstd: ARQ Nonstd
decode succeeded, remlen = 0
Mar 28 00:45:30.686: RASLib::ras_sendto: msg length 7 from
172.16.120.1:1719 to 172.16.120.2:49831
Mar 28 00:45:30.686: RASLib::RASSendRIP: RIP (seq# 12165) sent to 172.16.120.2
Mar 28 00:45:30.686: RASLib::RAS_WK_TInit: ipsock [0x60F0ED1C] setup successful
Mar 28 00:45:30.690: RASLib::ras_sendto: msg length 79
from 172.16.120.1:55415 to 172.16.110.1:1719
Mar 28 00:45:30.690: RASLib::RASSendLRQ: LRQ (seq# 28) sent to 172.16.110.1
Mar 28 00:45:30.698: RASLib::RASRecvData: successfully
rcvd message of length 128 from 172.16.110.1:1719
Mar 28 00:45:30.698: RASLib::RASRecvData: LCF (seq# 28)
rcvd from [172.16.110.1:1719] on sock [0x60F0ED1C]
RASLib::parse_lcf_nonstd: LCF Nonstd
decode succeeded, remlen = 0
Mar 28 00:45:30.702: RASLib::ras_sendto: msg length 24 from
172.16.120.1:1719 to 172.16.120.2:49831
Mar 28 00:45:30.702: RASLib::RASSendACF: ACF (seq# 12165) sent to 172.16.120.2
Mar 28 00:45:35.746: RASLib::RASRecvData: successfully rcvd message of
length 76 from 172.16.120.2:49831
Mar 28 00:45:35.746: RASLib::RASRecvData: RRQ (seq# 12166) rcvd
from [172.16.120.2:49831] on sock [0x60F2F9A0]
Mar 28 00:45:35.750: RASLib::ras_sendto: msg length 52 from
172.16.120.1:1719 to 172.16.120.2:49831
Mar 28 00:45:35.750: RASLib::RASSendRCF: RCF (seq# 12166) sent to 172.16.120.2
Mar 28 00:45:51.274: RASLib::RASRecvData: successfully rcvd
message of length 76 from 172.16.120.2:49831
Mar 28 00:45:51.274: RASLib::RASRecvData: DRQ (seq# 12167)
rcvd from [172.16.120.2:49831] on sock [0x60F2F9A0]
Mar 28 00:45:51.274: RASLib::ras_sendto: msg length 3
from 172.16.120.1:1719 to 172.16.120.2:49831
Mar 28 00:45:51.278: RASLib::RASSendDCF: DCF (seq# 12167)
sent to 172.16.120.2
Mar 28 00:46:20.750: RASLib::RASRecvData: successfully
rcvd message of length 76 from 172.16.120.2:49831
Mar 28 00:46:20.750: RASLib::RASRecvData: RRQ (seq# 12168)
rcvd from [172.16.120.2:49831] on sock [0x60F2F9A0]
Mar 28 00:46:20.750: RASLib::ras_sendto: msg length 52 from
172.16.120.1:1719 to 172.16.120.2:49831
Mar 28 00:46:20.754: RASLib::RASSendRCF: RCF (seq# 12168)
sent to 172.16.120.2
Mar 28 00:47:05.750: RASLib::RASRecvData: successfully

```

rcvd message of length 76 from 172.16.120.2:49831
Mar 28 00:47:05.754: RASLib::RASRecvData: RRQ (seq# 12169)
rcvd from [172.16.120.2:49831] on sock [0x60F2F9A0]
Mar 28 00:47:05.754: RASLib::ras_sendto: msg length 52
from 172.16.120.1:1719 to 172.16.120.2:49831
Mar 28 00:47:05.758: RASLib::RASSendRCF: RCF (seq# 12169)
sent to 172.16.120.2
Mar 28 00:47:50.754: RASLib::RASRecvData: successfully
rcvd message of length 76 from 172.16.120.2:49831
Mar 28 00:47:50.758: RASLib::RASRecvData: RRQ (seq# 12170)
rcvd from [172.16.120.2:49831] on sock [0x60F2F9A0]
Mar 28 00:47:50.758: RASLib::ras_sendto: msg length 52
from 172.16.120.1:1719 to 172.16.120.2:49831
Mar 28 00:47:50.758: RASLib::RASSendRCF: RCF (seq# 12170) sent to 172.16.120.2
Raleigh3640A#

```

Raleigh3640A#

Raleigh3640A#**show gatekeeper call**

Total number of active calls = 1.

GATEKEEPER CALL INFO
=====

LocalCallID	Age(secs)	BW			
24-6872	45	64 (Kbps)			
Endpt(s): Alias	E.164Addr	CallSignalAddr	Port	RASSignalAddr	Port
src EP: RAL5300A	9195552010	172.16.120.2	1720	172.16.120.2	49831
dst EP:	408#408555640	172.16.110.2	1720	172.16.110.2	1720

Raleigh3640A#

[**Sáida SanJose3640A**](#)

SanJose3640A#**show debug**

H.323 RAS:

H.323 RAS Messages debugging is on

SanJose3640A#**show gatekeeper endpoint**

GATEKEEPER ENDPOINT REGISTRATION
=====

CallSignalAddr	Port	RASSignalAddr	Port	Zone Name	Type	F
172.16.110.2	1720	172.16.110.2	52521	SJgk1	VOIP-GW	

H323-ID: SJ5300A@cisco.com

Total number of active registrations = 1

SanJose3640A#**show gatekeeper gw-type-prefix**

GATEWAY TYPE PREFIX TABLE
=====

Prefix: 919#*

Prefix: 408#*

Zone SJgk1 master gateway list:

172.16.110.2:1720 SJ5300A

SanJose3640A#**show log**

Syslog logging: enabled (0 messages dropped, 0 flushes, 0 overruns)

Console logging: level debugging, 1301 messages logged

Monitor logging: level debugging, 0 messages logged

Buffer logging: level debugging, 1293 messages logged

Trap logging: level informational, 103 message lines logged

Log Buffer (50000 bytes):

```
Mar 28 00:45:25.592: RASLib::RASRecvData: successfully rcvd
message of length 74 from 172.16.110.2:52521
Mar 28 00:45:25.592: RASLib::RASRecvData: RRQ (seq# 12137) rcvd
from [172.16.110.2:52521] on sock [0x60FE9B04]
Mar 28 00:45:25.596: RASLib::ras_sendto: msg length 52 from
172.16.110.1:1719 to 172.16.110.2:52521
Mar 28 00:45:25.596: RASLib::RASSendRCF: RCF (seq# 12137) sent to 172.16.110.2
Mar 28 00:45:30.692: RASLib::RASRecvData: successfully rcvd message
of length 79 from 172.16.120.1:55415
Mar 28 00:45:30.692: RASLib::RASRecvData: LRQ (seq# 28) rcvd from
[172.16.120.1:55415] on sock [0x60FE9B04]
RASLib::parse_lrq_nonstd: LRQ Nonstd decode succeeded, remlen = 0
Mar 28 00:45:30.696: RASLib::ras_sendto: msg length 128 from
172.16.110.1:1719 to 172.16.120.1:55415
Mar 28 00:45:30.696: RASLib::RASSendLCF: LCF (seq# 28) sent to 172.16.120.1
Mar 28 00:45:30.712: RASLib::RASRecvData: successfully rcvd message
of length 122 from 172.16.110.2:52521
Mar 28 00:45:30.712: RASLib::RASRecvData: ARQ (seq# 12138) rcvd from
[172.16.110.2:52521] on sock [0x60FE9B04]
RASLib::parse_arq_nonstd: ARQ Nonstd decode succeeded, remlen = 0
Mar 28 00:45:30.716: RASLib::ras_sendto: msg length 24 from 172.16.110.1:1719
to 172.16.110.2:52521
Mar 28 00:45:30.716: RASLib::RASSendACF: ACF (seq# 12138) sent to 172.16.110.2
Mar 28 00:45:51.268: RASLib::RASRecvData: successfully rcvd message
of length 76 from 172.16.110.2:52521
Mar 28 00:45:51.268: RASLib::RASRecvData: DRQ (seq# 12139) rcvd
from [172.16.110.2:52521] on sock [0x60FE9B04]
Mar 28 00:45:51.268: RASLib::ras_sendto: msg length 3 from
172.16.110.1:1719 to 172.16.110.2:52521
Mar 28 00:45:51.268: RASLib::RASSendDCF: DCF (seq# 12139) sent to 172.16.110.2
Mar 28 00:46:10.596: RASLib::RASRecvData: successfully rcvd message of
length 74 from 172.16.110.2:52521
Mar 28 00:46:10.596: RASLib::RASRecvData: RRQ (seq# 12140) rcvd
from [172.16.110.2:52521] on sock [0x60FE9B04]
Mar 28 00:46:10.600: RASLib::ras_sendto: msg length 52 from 172.16.110.1:1719
to 172.16.110.2:52521
Mar 28 00:46:10.600: RASLib::RASSendRCF: RCF (seq# 12140) sent to 172.16.110.2
Mar 28 00:46:55.600: RASLib::RASRecvData: successfully rcvd message of
length 74 from 172.16.110.2:52521
Mar 28 00:46:55.600: RASLib::RASRecvData: RRQ (seq# 12141) rcvd from
[172.16.110.2:52521] on sock [0x60FE9B04]
Mar 28 00:46:55.604: RASLib::ras_sendto: msg length 52 from 172.16.110.1:1719
to 172.16.110.2:52521
Mar 28 00:46:55.604: RASLib::RASSendRCF: RCF (seq# 12141) sent to 172.16.110.2
Mar 28 00:47:40.604: RASLib::RASRecvData: successfully rcvd message of
length 74 from 172.16.110.2:52521
Mar 28 00:47:40.608: RASLib::RASRecvData: RRQ (seq# 12142) rcvd from
[172.16.110.2:52521] on sock [0x60FE9B04]
Mar 28 00:47:40.608: RASLib::ras_sendto: msg length 52 from 172.16.110.1:1719
to 172.16.110.2:52521
Mar 28 00:47:40.608: RASLib::RASSendRCF: RCF (seq# 12142) sent to 172.16.110.2
Mar 28 00:48:25.608: RASLib::RASRecvData: successfully rcvd message of
length 74 from 172.16.110.2:52521
Mar 28 00:48:25.612: RASLib::RASRecvData: RRQ (seq# 12143) rcvd from
[172.16.110.2:52521] on sock [0x60FE9B04]
Mar 28 00:48:25.612: RASLib::ras_sendto: msg length 52 from 172.16.110.1:1719
to 172.16.110.2:52521
Mar 28 00:48:25.612: RASLib::RASSendRCF: RCF (seq# 12143) sent to 172.16.110.2
SanJose3640A#
```

SanJose3640A#

SanJose3640A#**show gatekeeper calls**

Total number of active calls = 1.

GATEKEEPER CALL INFO

=====

LocalCallID	Age (secs)	BW				
21-6872	63	64 (Kbps)				
Endpt(s): Alias	E.164Addr	CallSignalAddr	Port	RASSignalAddr	Port	
src EP:	9195552010					
dst EP: SJ5300A	408#408555640	172.16.110.2	1720	172.16.110.2	52521	

[Troubleshooting](#)

Esta seção fornece a informação para pesquisar defeitos sua configuração.

[Comandos para Troubleshooting](#)

A [Output Interpreter Tool \(apenas para clientes registrados\)](#) (OIT) suporta determinados comandos show. Use a OIT para exibir uma análise da saída do comando show.

Note: Consulte [Informações Importantes sobre Comandos de Debugação](#) antes de usar comandos **debug**.

- [debugar o voip aaa](#) - Permite mensagens de debugging para o gateway aaa de ser output ao console do sistema.
- [debugar o q931 de ISDN](#) - Informação dos indicadores sobre a configuração de chamada e desconexão das conexões de rede ISDN (camada 3) entre o roteador local (lado do usuário) e a rede.
- [debugar o inout do ccapi do voip](#) - Debuga o controle de chamada API.
- [debugar o ivr do voip](#) - Debuga o aplicativo de IVR.
- [debugar ras](#) - Indica os tipos e o endereçamento das mensagens do registro, da admissão e do protocolo status (RAS) enviadas e recebidas.

[Informações Relacionadas](#)

- [O guia do programador da versão API TCL IVR 1.0](#)
- [Configurando a resposta de voz interativa para plataformas de acesso de Cisco](#)
- [Melhorias da Segurança do Gateway e de Relatório do Cisco H.323](#)
- [Suporte à Tecnologia de Voz](#)
- [Suporte ao Produto de Voz e Comunicações Unificadas](#)
- [Troubleshooting da Telefonia IP Cisco](#)
- [Suporte Técnico e Documentação - Cisco Systems](#)