

# ASA/PIX 7.x e posterior: Túneis IPsec LAN para LAN e EasyVPN Terminam na Mesma Interface

## Exemplo de Configuração

### Contents

[Introduction](#)

[Prerequisites](#)

[Requirements](#)

[Componentes Utilizados](#)

[Conventions](#)

[Configurar](#)

[Diagrama de Rede](#)

[Configurações](#)

[Verificar](#)

[Troubleshoot](#)

[Comandos para Troubleshooting](#)

[Informações Relacionadas](#)

### [Introduction](#)

Este documento fornece uma configuração de exemplo que mostra como habilitar o HUB ASA para as conexões do túnel de site a site e Easy VPN IPsec na mesma interface. O IPsec entre o Cisco ASA 5520 e o Cisco Adaptive Security Appliance (ASA) 5505 usa Easy VPN com Network Extension Mode (NEM).

### [Prerequisites](#)

### [Requirements](#)

Não existem requisitos específicos para este documento.

### [Componentes Utilizados](#)

As informações neste documento são baseadas nestas versões de software e hardware:

- ASA 5500 Series que executa a versão 7.x e posterior (Hub)**Observação:** a configuração do HUB ASA também pode ser usada com o PIX Security Appliance 515, 515E, 525 e 535 que executa a versão 7.x e posterior
- Easy VPN ASA 5505 com versão 7.x e posterior
- PIX Security Appliance 515, 515E, 525 e 535 com versão 7.x ou posterior

The information in this document was created from the devices in a specific lab environment. All of the devices used in this document started with a cleared (default) configuration. If your network is live, make sure that you understand the potential impact of any command.

## Conventions

Consulte as [Convenções de Dicas Técnicas da Cisco para obter mais informações sobre convenções de documentos.](#)

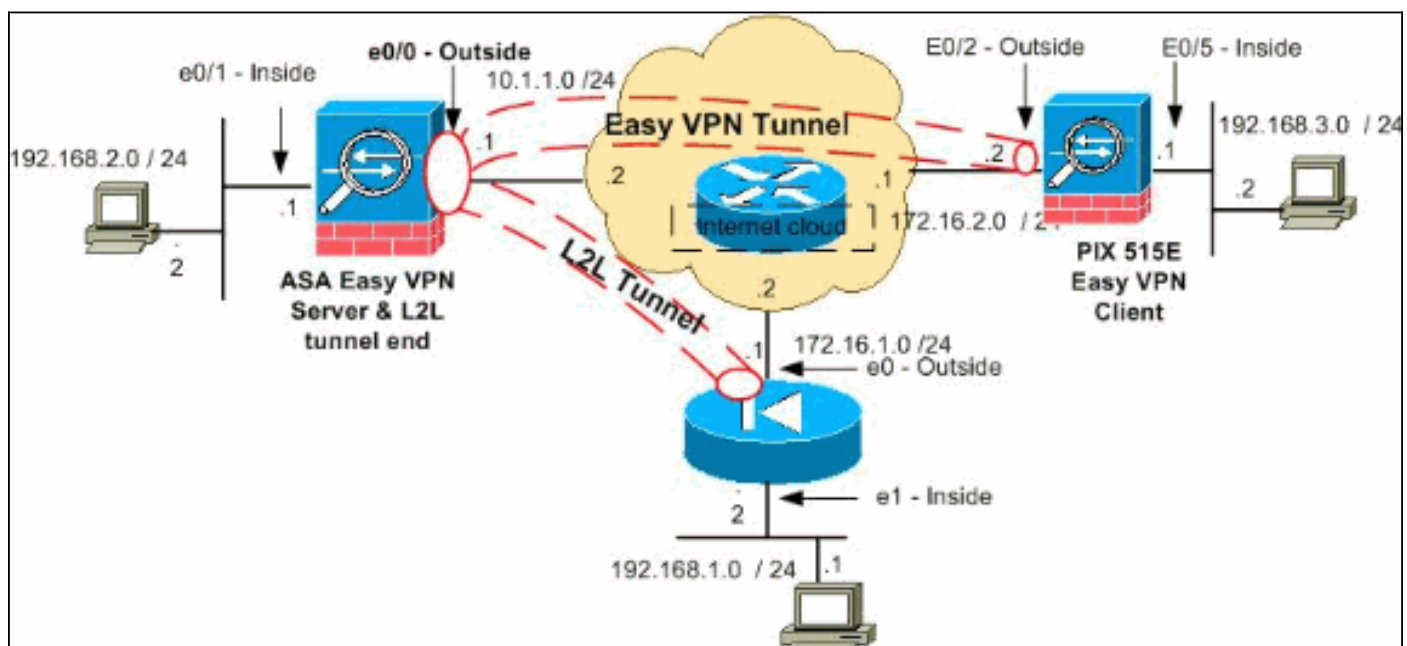
## Configurar

Esta seção apresenta as informações que você pode usar para configurar os recursos descritos neste documento.

Nota: Use a Command Lookup Tool (somente clientes registrados) para obter mais informações sobre os comandos usados nesta seção.

## Diagrama de Rede

Este documento utiliza a seguinte configuração de rede:



**Observação:** os esquemas de endereçamento IP usados nesta configuração não são legalmente roteáveis na Internet. São endereços [RFC 1918](#) usados em um ambiente de laboratório.

## Configurações

Este documento utiliza as seguintes configurações:

- [ASA DE HUB](#)
- [Easy VPN Client ASA 5505](#)
- [PIX](#)

## ASA DE HUB

```
ASA Version 8.0(2)
!
hostname ciscoasa
enable password 8Ry2YjIyt7RRXU24 encrypted
names
!
interface Ethernet0/0
 nameif outside
 security-level 0
 ip address 10.1.1.1 255.255.255.0
!
interface Ethernet0/1
 nameif inside
 security-level 100
 ip address 192.168.2.1 255.255.255.0
!
!--- Output Suppressed. !--- Access-list for interesting
traffic (Site to Site) to be !--- encrypted between hub
ASA and spoke (PIX) networks. access-list
outside_cryptomap_20 extended permit ip 192.168.2.0
255.255.255.0 192.168.1.0 255.255.255.0 !--- Access-list
for interesting traffic to be !--- encrypted between hub
ASA and spoke easy vpn client ASA networks. access-list
ezvpn1 extended permit ip 192.168.2.0 255.255.255.0
192.168.3.0 255.255.255.0 !--- Access-list for traffic
to bypass the network address !--- translation (NAT)
process. access-list nonat extended permit ip
192.168.2.0 255.255.255.0 192.168.1.0 255.255.255.0
access-list nonat extended permit ip 192.168.2.0
255.255.255.0 192.168.3.0 255.255.255.0 !--- Output
Suppressed. !--- Specify the NAT configuration. !--- NAT
0 prevents NAT for the ACL defined in this
configuration. !--- The nat 1 command specifies NAT for
all other traffic. nat-control global (outside) 1
interface nat (inside) 0 access-list nonat nat (inside)
1 0.0.0.0 0.0.0.0 route outside 0.0.0.0 0.0.0.0 10.1.1.2
1 !--- Output Suppressed. !--- Configuration of IPsec
Phase 2 crypto ipsec transform-set myset esp-3des esp-
sha-hmac !--- IPsec configuration for the dynamic LAN-
to-LAN tunnel crypto dynamic-map ezvpn 30 set transform-
set myset !--- IPsec configuration for the static LAN-
to-LAN tunnel crypto map outside_map 20 match address
outside_cryptomap_20 crypto map outside_map 20 set peer
172.16.1.1 crypto map outside_map 20 set transform-set
myset !--- IPsec configuration that binds dynamic map to
crypto map crypto map outside_map 65535 ipsec-isakmp
dynamic ezvpn !--- Crypto map applied to the outside
interface of the ASA crypto map outside_map interface
outside isakmp enable outside !--- PHASE 1 CONFIGURATION
---! !--- This configuration uses isakmp policy 1. !---
These configuration commands !--- define the Phase 1
policies that are used. crypto isakmp policy 10
authentication pre-share encryption 3des hash sha group
2 lifetime 86400 !--- Output Suppressed. !--- This
defines the group policy you use with Easy VPN. !---
Specify the networks that can pass through !--- the
tunnel and that you want to !--- use network extension
mode. group-policy tunnel internal group-policy tunnel
attributes nem enable !--- The username and password
associated with !--- this VPN connection are defined
here. You !--- can also use AAA for this function.
```

```
username cisco password ffIRPGpDSOJh9YLq encrypted
tunnel-group 172.16.1.1 type ipsec-l2l tunnel-group
172.16.1.1 ipsec-attributes pre-shared-key * !--- The
tunnel-group commands bind the configurations !---
defined in this configuration to the tunnel that is !---
used for Easy VPN. This tunnel name is the one !---
specified on the remote side. tunnel-group mytunnel type
remote-access tunnel-group mytunnel general-attributes
default-group-policy tunnel !--- Defines the pre-shared
key used for !--- IKE authentication for the dynamic
tunnel. tunnel-group mytunnel ipsec-attributes pre-
shared-key * prompt hostname context
Cryptochecksum:e148bf43d04906f5db41fc6f90c52d34 : end
```

## Cliente Easy VPN - ASA 5505

```
ASA Version 7.2(2)
!
hostname ciscoasa
domain-name default.domain.invalid
enable password 8Ry2YjIyt7RRXU24 encrypted
names
!
interface Vlan1
 nameif outside
 security-level 0
 ip address 172.16.2.2 255.255.255.0
!
interface Vlan2
 nameif inside
 security-level 100
 ip address 192.168.3.1 255.255.255.0
!
interface Ethernet0/0
!
interface Ethernet0/1
 shutdown
!
interface Ethernet0/2
!
interface Ethernet0/3
!
interface Ethernet0/4
 switchport access vlan 2

!--- Output Suppressed. ! route outside 0.0.0.0 0.0.0.0
172.16.2.1 1 !--- Output Suppressed. !--- Easy VPN
Client Configuration ---! !--- Specify the IP address of
the VPN server. vpnclient server 10.1.1.1 !--- This
example uses network extension mode. vpnclient mode
network-extension-mode !--- Specify the group name and
the pre-shared key. vpnclient vpngroup mytunnel password
***** !--- Specify the authentication username and
password. vpnclient username cisco password ***** !--
- In order to enable the device as hardware vpnclient,
use this command. vpnclient enable ! !--- Output
Suppressed.
Cryptochecksum:0458ce7a08e6b7f9417b17bc254eb4e2 : end
```

## PIX

```
PIX Version 8.0(2)
!
```

```
hostname pixfirewall
enable password 8Ry2YjIyt7RRXU24 encrypted
names
!
interface Ethernet0
 nameif outside
 security-level 0
 ip address 172.16.1.1 255.255.255.0
!
interface Ethernet1
 nameif inside
 security-level 100
 ip address 192.168.1.2 255.255.255.0
!
passwd 2KFQnbNIdI.2KYOU encrypted
ftp mode passive
!--- This access list (inside_nat0_outbound) is used
with the nat zero command. !--- This prevents traffic
which matches the access list from undergoing !---
network address translation (NAT). access-list
inside_nat0_outbound extended permit ip 192.168.1.0
255.255.255.0 192.168.2.0 255.255.255.0 !--- The traffic
specified by this ACL is !--- traffic that is to be
encrypted and !--- sent across the VPN tunnel. This ACL
is intentionally !--- the same as
(inside_nat0_outbound). !--- Two separate access lists
must always be used in this configuration. access-list
outside_cryptomap_20 extended permit ip 192.168.1.0
255.255.255.0 192.168.2.0 255.255.255.0 !--- NAT 0
prevents NAT for networks specified in the ACL
inside_nat0_outbound. nat (inside) 0 access-list
inside_nat0_outbound !--- Output Suppressed. route
outside 0.0.0.0 0.0.0.0 172.16.1.2 1 !--- Output
Suppressed. !--- PHASE 2 CONFIGURATION ---! !--- The
encryption types for Phase 2 are defined here. !---
Define the transform set for Phase 2. crypto ipsec
transform-set myset esp-3des esp-sha-hmac !--- Define
which traffic can be sent to the IPsec peer. crypto map
outside_map 20 match address outside_cryptomap_20 !---
Sets the IPsec peer. crypto map outside_map 20 set peer
10.1.1.1 !--- Sets the IPsec transform set "myset" !---
to be used with the crypto map entry "outside_map".
crypto map outside_map 20 set transform-set myset !---
Specifies the interface to be used with !--- the
settings defined in this configuration. crypto map
outside_map interface outside !--- PHASE 1 CONFIGURATION
---! !--- This configuration uses isakmp policy 10. !---
Policy 65535 is included in the config by default. !---
The configuration commands here define the Phase !--- 1
policy parameters that are used. crypto isakmp enable
outside crypto isakmp policy 10 authentication pre-share
encryption 3des hash sha group 2 lifetime 86400 crypto
isakmp policy 65535 authentication pre-share encryption
3des hash sha group 2 lifetime 86400 !--- Output
Suppressed. !--- In order to create and manage the
database of connection-specific records !--- for ipsec-
l2l-IPsec (LAN-to-LAN) tunnels, use the tunnel-group !--
- command in global configuration mode. !--- For L2L
connections the name of the tunnel group MUST be the IP
!--- address of the IPsec peer. tunnel-group 10.1.1.1
type ipsec-l2l !--- Enter the pre-shared-key in order to
configure the authentication method. tunnel-group
10.1.1.1 ipsec-attributes pre-shared-key * prompt
hostname context
```

## Verificar

Esta seção fornece informações que você pode usar para confirmar se a sua configuração funciona corretamente.

A [Output Interpreter Tool \(somente clientes registrados\) \(OIT\)](#) oferece suporte a determinados comandos `show`. Use a OIT para exibir uma análise da saída do comando `show`.

- `show crypto isakmp sa` — Exibe todas as associações de segurança atuais (SAs) de IKE em um peer.
- `show crypto ipsec sa` — Exibe todas as SAs atuais.

Esta seção mostra configurações de verificação do exemplo para:

- [ASA DE HUB](#)
- [Easy VPN Client ASA 5505](#)
- [PIX](#)

### ASA DE HUB

```
ciscoasa #show crypto isakmp sa

  Active SA: 2
  Rekey SA: 0 (A tunnel will report 1 Active and 1
Rekey SA during rekey)
Total IKE SA: 2
!--- Dynamic LAN-to-LAN tunnel establishment 1 IKE Peer:
172.16.2.2 Type : user Role : responder Rekey : no State
: AM_ACTIVE !--- Static LAN-to-LAN tunnel establishment
2 IKE Peer: 172.16.1.1 Type : L2L Role : initiator Rekey
: no State : MM_ACTIVE ciscoasa #show crypto ipsec sa
ciscoasa(config)#sh crypto ipsec sa
interface: outside
  Crypto map tag: outside_map, seq num: 20, local
addr: 10.1.1.1

  access-list outside_cryptomap_20 permit ip
192.168.2.0 255.255.255.0
 192.168.1.0 255.255.255.0
  local ident (addr/mask/prot/port):
(192.168.2.0/255.255.255.0/0/0)
  remote ident (addr/mask/prot/port):
(192.168.1.0/255.255.255.0/0/0)
  current_peer: 172.16.1.1

  #pkts encaps: 4, #pkts encrypt: 4, #pkts digest: 4
  #pkts decaps: 4, #pkts decrypt: 4, #pkts verify: 4
  #pkts compressed: 0, #pkts decompressed: 0
  #pkts not compressed: 4, #pkts comp failed: 0,
#pkts decomp failed: 0
  #pre-frag successes: 0, #pre-frag failures: 0,
#fragments created: 0
  #PMTUs sent: 0, #PMTUs rcvd: 0, #decapsulated frgs
needing reassembly: 0
  #send errors: 0, #recv errors: 0
```

```
local crypto endpt.: 10.1.1.1, remote crypto
endpt.: 172.16.1.1

path mtu 1500, ipsec overhead 58, media mtu 1500
current outbound spi: E4312E13

inbound esp sas:
spi: 0x9ABAC3DD (2595931101)
transform: esp-3des esp-sha-hmac none
in use settings ={L2L, Tunnel, }
slot: 0, conn_id: 741376, crypto-map:
outside_map
sa timing: remaining key lifetime (kB/sec):
(4274999/28783)
IV size: 8 bytes
replay detection support: Y
outbound esp sas:
spi: 0xE4312E13 (3828428307)
transform: esp-3des esp-sha-hmac none
in use settings ={L2L, Tunnel, }
slot: 0, conn_id: 741376, crypto-map:
outside_map
sa timing: remaining key lifetime (kB/sec):
(4274999/28783)
IV size: 8 bytes
replay detection support: Y

Crypto map tag: ezvpn, seq num: 30, local addr:
10.1.1.1

local ident (addr/mask/prot/port):
(10.1.1.1/255.255.255.255/0/0)
remote ident (addr/mask/prot/port):
(172.16.2.2/255.255.255.255/0/0)
current_peer: 172.16.2.2, username: cisco
dynamic allocated peer ip: 0.0.0.0

#pkts encaps: 0, #pkts encrypt: 0, #pkts digest: 0
#pkts decaps: 0, #pkts decrypt: 0, #pkts verify: 0
#pkts compressed: 0, #pkts decompressed: 0
#pkts not compressed: 0, #pkts comp failed: 0,
#pkts decomp failed: 0
#pre-frag successes: 0, #pre-frag failures: 0,
#fragments created: 0
#PMTUs sent: 0, #PMTUs rcvd: 0, #decapsulated frgs
needing reassembly: 0
#send errors: 0, #recv errors: 0

local crypto endpt.: 10.1.1.1, remote crypto
endpt.: 172.16.2.2

path mtu 1500, ipsec overhead 58, media mtu 1500
current outbound spi: 2647B59C

inbound esp sas:
spi: 0x21685AF8 (560487160)
transform: esp-3des esp-sha-hmac none
in use settings ={RA, Tunnel, }
slot: 0, conn_id: 737280, crypto-map: ezvpn
sa timing: remaining key lifetime (sec): 28146
IV size: 8 bytes
replay detection support: Y
outbound esp sas:
```

```
spi: 0x2647B59C (642233756)
  transform: esp-3des esp-sha-hmac none
  in use settings ={RA, Tunnel, }
  slot: 0, conn_id: 737280, crypto-map: ezvpn
  sa timing: remaining key lifetime (sec): 28146
  IV size: 8 bytes
  replay detection support: Y
```

**Crypto map tag: ezvpn, seq num: 30, local addr:  
10.1.1.1**

**local ident (addr/mask/prot/port):  
(0.0.0.0/0.0.0.0/0/0)**

**remote ident (addr/mask/prot/port):  
(192.168.3.0/255.255.255.0/0/0)**

**current\_peer: 172.16.2.2, username: cisco**  
dynamic allocated peer ip: 0.0.0.0

**#pkts encaps: 5, #pkts encrypt: 5, #pkts digest: 5**  
**#pkts decaps: 5, #pkts decrypt: 5, #pkts verify: 5**  
#pkts compressed: 0, #pkts decompressed: 0  
#pkts not compressed: 5, #pkts comp failed: 0,  
#pkts decomp failed: 0  
#pre-frag successes: 0, #pre-frag failures: 0,  
#fragments created: 0  
#PMTUs sent: 0, #PMTUs rcvd: 0, #decapsulated frgs  
needing reassembly: 0  
#send errors: 0, #recv errors: 0

local crypto endpt.: 10.1.1.1, remote crypto  
endpt.: 172.16.2.2

path mtu 1500, ipsec overhead 58, media mtu 1500  
current outbound spi: 07997B21

inbound esp sas:

```
spi: 0xB5B6013D (3048603965)
  transform: esp-3des esp-sha-hmac none
  in use settings ={RA, Tunnel, }
  slot: 0, conn_id: 737280, crypto-map: ezvpn
  sa timing: remaining key lifetime (sec): 28145
  IV size: 8 bytes
  replay detection support: Y
```

outbound esp sas:

```
spi: 0x07997B21 (127499041)
  transform: esp-3des esp-sha-hmac none
  in use settings ={RA, Tunnel, }
  slot: 0, conn_id: 737280, crypto-map: ezvpn
  sa timing: remaining key lifetime (sec): 28145
  IV size: 8 bytes
  replay detection support: Y
```

**Crypto map tag: ezvpn, seq num: 30, local addr:  
10.1.1.1**

**local ident (addr/mask/prot/port):  
(0.0.0.0/0.0.0.0/0/0)**

**remote ident (addr/mask/prot/port):  
(172.16.2.2/255.255.255.255/0/0)**

**current\_peer: 172.16.2.2, username: cisco**  
dynamic allocated peer ip: 0.0.0.0

**#pkts encaps: 0, #pkts encrypt: 0, #pkts digest: 0**  
**#pkts decaps: 0, #pkts decrypt: 0, #pkts verify: 0**

```
#pkts compressed: 0, #pkts decompressed: 0
#pkts not compressed: 0, #pkts comp failed: 0,
#pkts decomp failed: 0
#pre-frag successes: 0, #pre-frag failures: 0,
#fragments created: 0
#PMTUs sent: 0, #PMTUs rcvd: 0, #decapsulated frgs
needing reassembly: 0
#send errors: 0, #recv errors: 0

local crypto endpt.: 10.1.1.1, remote crypto
endpt.: 172.16.2.2

path mtu 1500, ipsec overhead 58, media mtu 1500
current outbound spi: 0F0B1A75

inbound esp sas:
spi: 0x68B0EA75 (1756424821)
transform: esp-3des esp-sha-hmac none
in use settings ={RA, Tunnel, }
slot: 0, conn_id: 737280, crypto-map: ezvpn
sa timing: remaining key lifetime (sec): 28143
IV size: 8 bytes
replay detection support: Y
outbound esp sas:
spi: 0x0F0B1A75 (252385909)
transform: esp-3des esp-sha-hmac none
in use settings ={RA, Tunnel, }
slot: 0, conn_id: 737280, crypto-map: ezvpn
sa timing: remaining key lifetime (sec): 28143
IV size: 8 bytes
replay detection support: Y
```

## Easy VPN Client ASA 5505

```
ciscoasa(config)# sh crypto isakmp sa

Active SA: 1
Rekey SA: 0 (A tunnel will report 1 Active and 1
Rekey SA during rekey)
Total IKE SA: 1

1 IKE Peer: 10.1.1.1
Type      : user           Role      : initiator
Rekey     : no            State     : AM_ACTIVE

ciscoasa(config)# sh crypto ipsec sa
interface: outside
Crypto map tag: _vpnc_cm, seq num: 10, local addr:
172.16.2.2

access-list _vpnc_acl permit ip host 172.16.2.2
host 10.1.1.1
local ident (addr/mask/prot/port):
(172.16.2.2/255.255.255.255/0/0)
remote ident (addr/mask/prot/port):
(10.1.1.1/255.255.255.255/0/0)
current_peer: 10.1.1.1, username: 10.1.1.1
dynamic allocated peer ip: 0.0.0.0
```

```
#pkts encaps: 0, #pkts encrypt: 0, #pkts digest: 0
#pkts decaps: 0, #pkts decrypt: 0, #pkts verify: 0
#pkts compressed: 0, #pkts decompressed: 0
#pkts not compressed: 0, #pkts comp failed: 0,
#pkts decomp failed: 0
#pre-frag successes: 0, #pre-frag failures: 0,
#fragments created: 0
#PMTUs sent: 0, #PMTUs rcvd: 0, #decapsulated frgs
needing reassembly: 0
#send errors: 0, #recv errors: 0

local crypto endpt.: 172.16.2.2, remote crypto
endpt.: 10.1.1.1

path mtu 1500, ipsec overhead 58, media mtu 1500
current outbound spi: 21685AF8

inbound esp sas:
spi: 0x2647B59C (642233756)
transform: esp-3des esp-sha-hmac none
in use settings ={RA, Tunnel, }
slot: 0, conn_id: 178, crypto-map: _vpnc_cm
sa timing: remaining key lifetime (sec): 28298
IV size: 8 bytes
replay detection support: Y
outbound esp sas:
spi: 0x21685AF8 (560487160)
transform: esp-3des esp-sha-hmac none
in use settings ={RA, Tunnel, }
slot: 0, conn_id: 178, crypto-map: _vpnc_cm
sa timing: remaining key lifetime (sec): 28298
IV size: 8 bytes
replay detection support: Y

Crypto map tag: _vpnc_cm, seq num: 10, local addr:
172.16.2.2

access-list _vpnc_acl permit ip host 172.16.2.2
any
local ident (addr/mask/prot/port):
(172.16.2.2/255.255.255.255/0/0)
remote ident (addr/mask/prot/port):
(0.0.0.0/0.0.0.0/0/0)
current_peer: 10.1.1.1, username: 10.1.1.1
dynamic allocated peer ip: 0.0.0.0

#pkts encaps: 0, #pkts encrypt: 0, #pkts digest: 0
#pkts decaps: 0, #pkts decrypt: 0, #pkts verify: 0
#pkts compressed: 0, #pkts decompressed: 0
#pkts not compressed: 0, #pkts comp failed: 0,
#pkts decomp failed: 0
#pre-frag successes: 0, #pre-frag failures: 0,
#fragments created: 0
#PMTUs sent: 0, #PMTUs rcvd: 0, #decapsulated frgs
needing reassembly: 0
#send errors: 0, #recv errors: 0

local crypto endpt.: 172.16.2.2, remote crypto
endpt.: 10.1.1.1

path mtu 1500, ipsec overhead 58, media mtu 1500
current outbound spi: 68B0EA75

inbound esp sas:
```

```
spi: 0x0F0B1A75 (252385909)
  transform: esp-3des esp-sha-hmac none
  in use settings ={RA, Tunnel, }
  slot: 0, conn_id: 178, crypto-map: _vpnc_cm
  sa timing: remaining key lifetime (sec): 28298
  IV size: 8 bytes
  replay detection support: Y
outbound esp sas:
  spi: 0x68B0EA75 (1756424821)
  transform: esp-3des esp-sha-hmac none
  in use settings ={RA, Tunnel, }
  slot: 0, conn_id: 178, crypto-map: _vpnc_cm
  sa timing: remaining key lifetime (sec): 28298
  IV size: 8 bytes
  replay detection support: Y

Crypto map tag: _vpnc_cm, seq num: 10, local addr:
172.16.2.2

access-list _vpnc_acl permit ip 192.168.3.0
255.255.255.0 any
local ident (addr/mask/prot/port):
(192.168.3.0/255.255.255.0/0/0)
  remote ident (addr/mask/prot/port):
(0.0.0.0/0.0.0.0/0/0)
  current_peer: 10.1.1.1, username: 10.1.1.1
  dynamic allocated peer ip: 0.0.0.0

#pkts encaps: 5, #pkts encrypt: 5, #pkts digest: 5
#pkts decaps: 5, #pkts decrypt: 5, #pkts verify: 5
#pkts compressed: 0, #pkts decompressed: 0
#pkts not compressed: 0, #pkts comp failed: 0,
#pkts decomp failed: 0
#pre-frag successes: 0, #pre-frag failures: 0,
#fragments created: 0
#PMTUs sent: 0, #PMTUs rcvd: 0, #decapsulated frgs
needing reassembly: 0
#send errors: 0, #recv errors: 0

local crypto endpt.: 172.16.2.2, remote crypto
endpt.: 10.1.1.1

path mtu 1500, ipsec overhead 58, media mtu 1500
current outbound spi: B5B6013D

inbound esp sas:
  spi: 0x07997B21 (127499041)
  transform: esp-3des esp-sha-hmac none
  in use settings ={RA, Tunnel, }
  slot: 0, conn_id: 178, crypto-map: _vpnc_cm
  sa timing: remaining key lifetime (sec): 28294
  IV size: 8 bytes
  replay detection support: Y
outbound esp sas:
  spi: 0xB5B6013D (3048603965)
  transform: esp-3des esp-sha-hmac none
  in use settings ={RA, Tunnel, }
  slot: 0, conn_id: 178, crypto-map: _vpnc_cm
  sa timing: remaining key lifetime (sec): 28294
  IV size: 8 bytes
  replay detection support: Y
```

```
pixfirewall(config)# sh crypto isakmp sa

Active SA: 1
Rekey SA: 0 (A tunnel will report 1 Active and 1
Rekey SA during rekey)
Total IKE SA: 1

1 IKE Peer: 10.1.1.1
  Type      : L2L                Role       : responder
  Rekey     : no                 State      : MM_ACTIVE

pixfirewall(config)# sh crypto ipsec sa
interface: outside
Crypto map tag: outside_map, seq num: 20, local
addr: 172.16.1.1

access-list outside_cryptomap_20 permit ip
192.168.1.0 255.255.255.0
192.168.2.0 255.255.255.0
local ident (addr/mask/prot/port):
(192.168.1.0/255.255.255.0/0/0)
remote ident (addr/mask/prot/port):
(192.168.2.0/255.255.255.0/0/0)
current_peer: 10.1.1.1

#pkts encaps: 4, #pkts encrypt: 4, #pkts digest: 4
#pkts decaps: 4, #pkts decrypt: 4, #pkts verify: 4
#pkts compressed: 0, #pkts decompressed: 0
#pkts not compressed: 0, #pkts comp failed: 0,
#pkts decomp failed: 0
#pre-frag successes: 0, #pre-frag failures: 0,
#fragments created: 0
#PMTUs sent: 0, #PMTUs rcvd: 0, #decapsulated frgs
needing reassembly: 0
#send errors: 0, #recv errors: 0

local crypto endpt.: 172.16.1.1, remote crypto
endpt.: 10.1.1.1

path mtu 1500, ipsec overhead 58, media mtu 1500
current outbound spi: 9ABAC3DD

inbound esp sas:
spi: 0xE4312E13 (3828428307)
transform: esp-3des esp-sha-hmac none
in use settings = {L2L, Tunnel, }
slot: 0, conn_id: 12288, crypto-map:
outside_map
sa timing: remaining key lifetime (kB/sec):
(3824999/28628)
IV size: 8 bytes
replay detection support: Y
outbound esp sas:
spi: 0x9ABAC3DD (2595931101)
transform: esp-3des esp-sha-hmac none
in use settings = {L2L, Tunnel, }
slot: 0, conn_id: 12288, crypto-map:
outside_map
sa timing: remaining key lifetime (kB/sec):
(3824999/28628)
```

```
IV size: 8 bytes
replay detection support: Y
```

## Troubleshoot

Esta seção disponibiliza informações para a solução de problemas de configuração.

### Comandos para Troubleshooting

A [Output Interpreter Tool \(somente clientes registrados\) oferece suporte a determinados comandos show, o que permite exibir uma análise da saída do comando show.](#)

**Nota:** Consulte **Informações Importantes sobre Comandos de Depuração antes de usar os comandos debug.**

Emita comandos PIX no modo de configuração:

- **clear crypto isakmp sa** — Limpa as SAs de Fase 1
- **clear crypto ipsec sa** — Limpa as SAs de Fase 2

Os comandos **debug** para túneis de VPN:

- **debug crypto isakmp sa** — Depura as negociações ISAKMP SA
- **debug crypto ipsec sa** — Depura as negociações de SA de IPsec

## Informações Relacionadas

- [Dispositivos de segurança Cisco PIX 500 Series - Introdução](#)
- [Soluções de Troubleshooting Mais Comuns de VPN IPsec L2L e de Acesso Remoto](#)
- [Cisco ASA 5500 Series Adaptive Security Appliances - Suporte ao produto](#)
- [Negociação IPsec/Protocolos IKE](#)
- [Suporte Técnico e Documentação - Cisco Systems](#)