

HCM-F에 새 PLM 추가 문제 해결

목차

[소개](#)

[사전 요구 사항](#)

[요구 사항](#)

[사용되는 구성 요소](#)

[문제/장애:HCM-F 관리자가 새 PLM2 인스턴스를 추가할 수 없습니다.](#)

[솔루션 1.](#)

[솔루션 2.](#)

[솔루션 3.](#)

[솔루션 4.](#)

[솔루션 5.](#)

[관련 정보](#)

소개

이 문서에서는 새 PLM을 추가할 때 HLM(Hosted License Manager) 및 PLM(Prime License Manager)의 문제를 해결하는 방법에 대해 설명합니다.TAC 케이스를 열기 전에 이 체크리스트를 수행합니다.

사전 요구 사항

요구 사항

다음 주제에 대한 지식을 보유하고 있으면 유용합니다.

- Cisco HCS(Hosted Collaboration Solution)
- Cisco HCM-F(Hosted Collaboration Mediation Function)
- ELM/PLM의 라이선스 설치

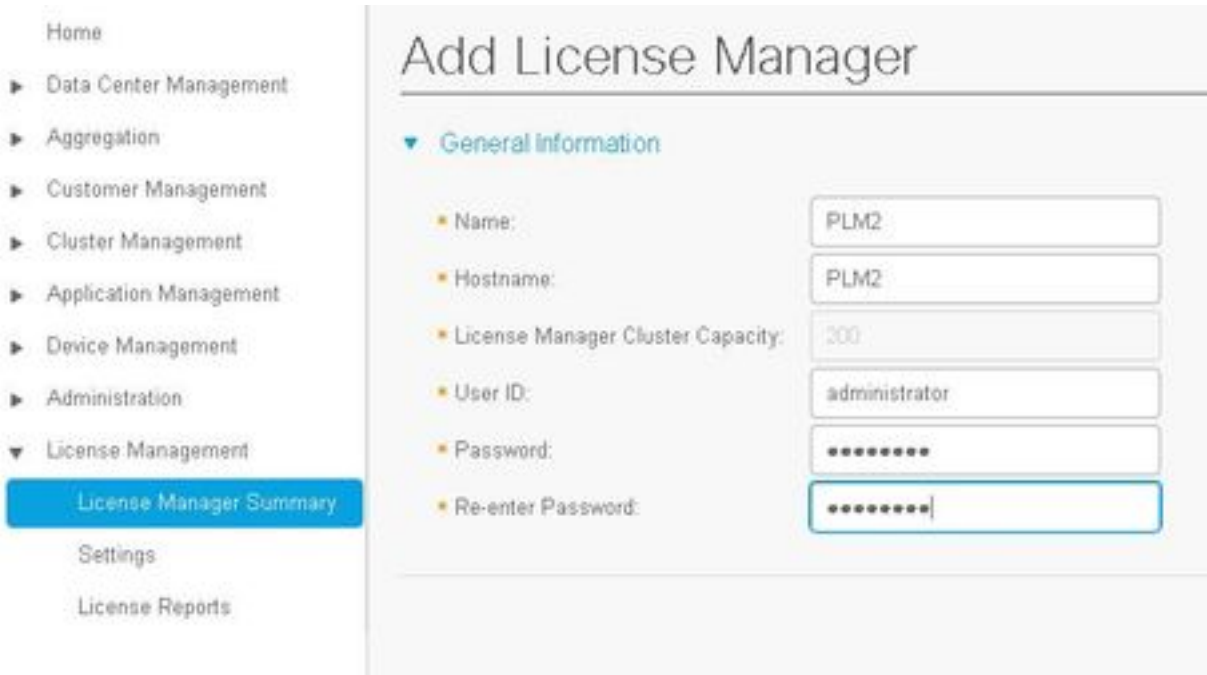
사용되는 구성 요소

이 문서의 정보는 다음 소프트웨어 및 하드웨어 버전을 기반으로 합니다.

- HCM-F 10.6.2
- PLM 10.5.2

이 문서의 정보는 특정 랩 환경의 디바이스를 토대로 작성되었습니다.이 문서에 사용된 모든 디바이스는 초기화된(기본) 컨피그레이션으로 시작되었습니다.현재 네트워크가 작동 중인 경우, 모든 명령어의 잠재적인 영향을 미리 숙지하시기 바랍니다.

문제/장애:HCM-F 관리자가 새 PLM2 인스턴스를 추가할 수 없습니다.



표시되는 오류 메시지입니다.



이 문제를 해결하려면 여러 조건이 동일한 GUI 오류를 일으킬 수 있으므로 HLM 상세 로그가 필요합니다.

1. HCM-F에 로그인합니다.CLI는 로그 레벨을 활성화하고 로그를 수집합니다.
2. **set trace tracelevel** 명령을 실행합니다.
3. tracelevel을 입력합니다(허용되는 트레이스를 찾으려면 CLI show tracelevel 사용).
4. 서비스 이름(Cisco HCS License Manager Service)을 입력합니다.
5. 이 명령 파일 **get activelog /hcs/HLM/***을 사용하여 문제를 재현하고 로그를 수집합니다.

솔루션 1.

HLM 로그는 연결 시간 제한으로 인해 HLM이 PLM에 대한 REST(Representational State Transfer)

연결을 만들 수 없음을 보여줍니다.

```
| 2016-09-02 04:52:55.025 | [63406] | SdlSig | CreateELMRequest | null0 | HLM(HLMCORE) |
SDRUI(NBI-HLM-v90-LIB0) | null

2016-09-02 16:52:55,025 INFO [63406] HLMCoreAgent:null0_CreateELMRequest is fired...

2016-09-02 16:52:55,025 INFO [63406] HLMCoreAgent:null0_CreateELMRequest recieved

2016-09-02 16:52:55,025 INFO [63406] HLMCoreAgent:elmName PLM2

2016-09-02 16:52:55,025 INFO [63406] HLMCoreAgent:elmHost PLM2

2016-09-02 16:52:55,025 INFO [63406] HLMCoreAgent:elmUser administrator

2016-09-02 16:52:55,025 INFO [63406] HLMCoreAgent:elmPass *****

2016-09-02 16:52:55,025 INFO [63406] HLMCoreAgent:deploymentMode HCS

2016-09-02 16:52:55,025 INFO [63406] HLMCoreAgent:null0_CreateELMRequest opening REST
connection to supplied LM

2016-09-02 16:52:55,025 INFO [63406] ELMApi: init, connecting to PLM2

2016-09-02 16:52:55,025 DEBUG [63406] Got the sslCtx

2016-09-02 16:52:55,025 INFO [63406] Initialized the context

2016-09-02 16:52:55,096 INFO [63406] ELMApi: initialized with connection timeout, connected to
PLM2

2016-09-02 16:52:55,096 INFO [63406] HLMCoreAgent:null0_CreateELMRequest validating connection
to LM

2016-09-02 16:52:55,096 DEBUG [63406] ELMApi: validateConnection Called

2016-09-02 16:52:55,097 ERROR [63406] ELMApi: ClientHandlerException caught validating
connection, throwing C onnectException

2016-09-02 16:52:55,097 ERROR [63406] HLMCoreAgent:CreateELMRequest Exception:
java.net.UnknownHostException: PLM2

-----

2016-09-02 16:52:55,100 DEBUG [63406] Agent: Sent message to SDRUI(NBI-HLM-v90-LIB0)

2016-09-02 16:52:55,100 DEBUG [63406] HLMCoreAgent:CreateELMResponse message was sent.

2016-09-02 16:52:55,100 ERROR [63406] Sdl...

5 | 2016-09-02 04:52:55.100 | [63406] | SdlExcept | CreateELMRequest | null0 | HLM(HLMCORE) |
SDRUI(NBI-HLM-v90-LIB0) | Error in fire: java.net.UnknownHostException:
PLM2

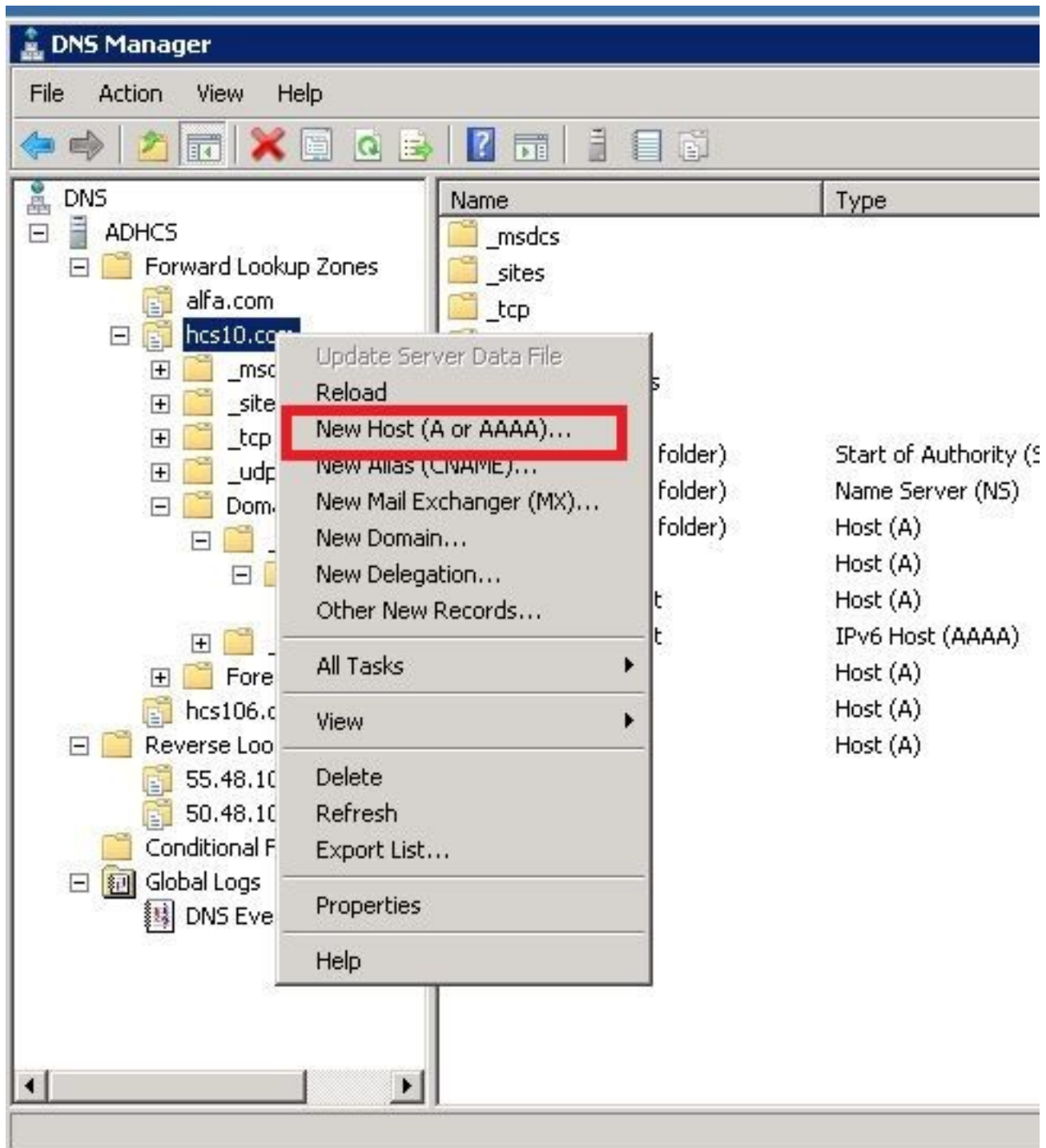
2016-09-02 16:52:55,101 ERROR [63406] Agent caught exception while processing message type
CreateELMRequest

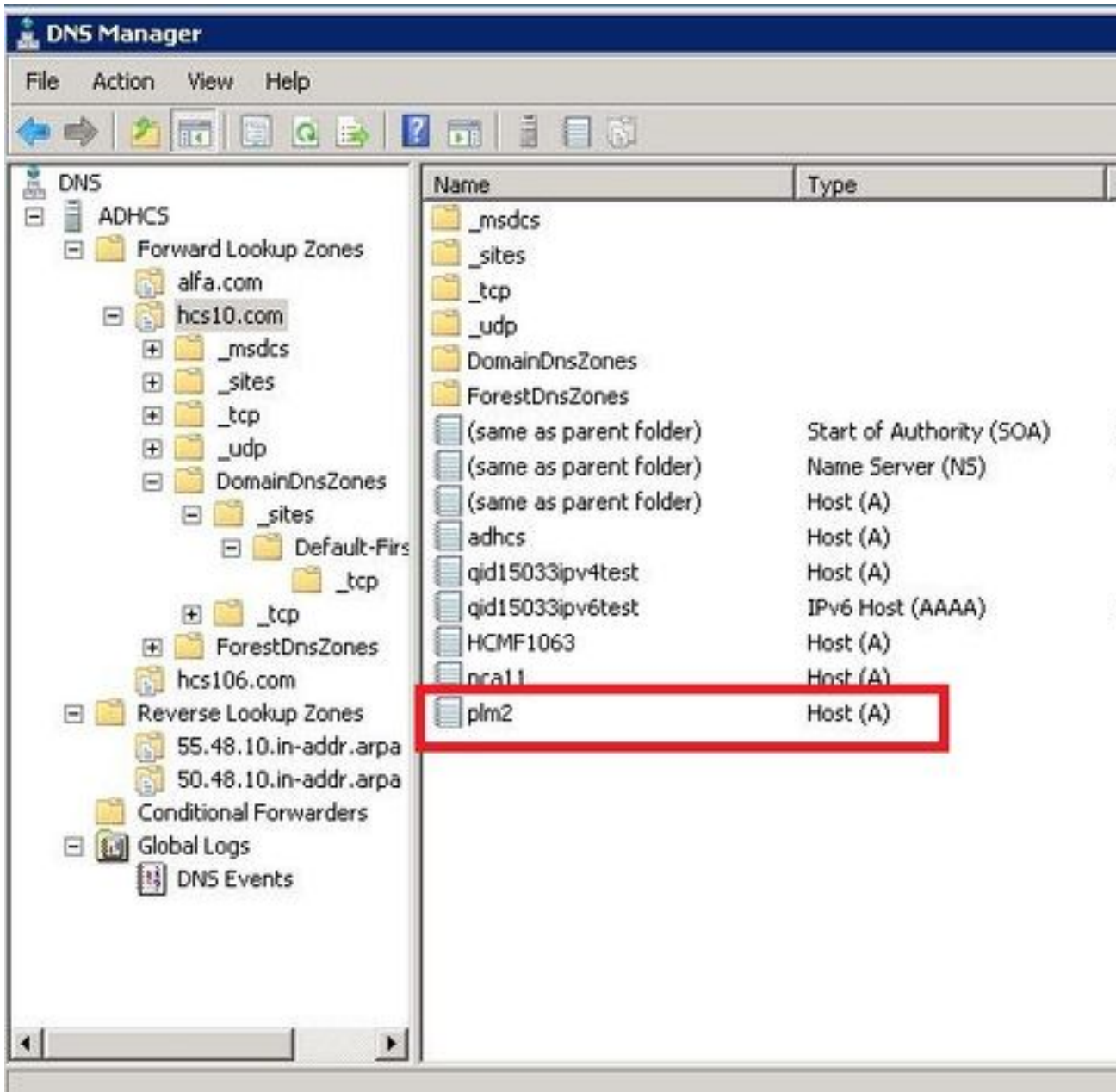
com.sun.jersey.api.client.ClientHandlerException: java.net.UnknownHostException: PLM2
```

at

```
com.sun.jersey.client.urlconnection.URLConnectionClientHandler.handle(URLConnectionClientHandler  
.j  
ava:151)
```

DNS(Domain Name Server)의 HCS 관리에서 직접 및 역방향 조회를 추가하고 이러한 이미지에 표시된 대로 연결 문제를 확인합니다.





다음을 확인합니다.

명령을 실행합니다.

```
admin:show network eth0
Ethernet 0
DHCP : disabled Status : up
IP Address : 10.48.50.70 IP Mask : 255.255.255.128
Link Detected: yes Mode : Auto disabled, Full, 1000 Mbits/s
Duplicate IP : no
```

```
DNS
Primary : 10.48.55.76 Secondary : Not Configured
Options : timeout:5 attempts:2
Domain : hcslab.com
Gateway : 10.48.50.1 on Ethernet 0
```

```
admin:utils network ping plm2
PING plm2.hcs10.com (10.48.50.72) 56(84) bytes of data.
64 bytes from plm2.hcs10.com (10.48.50.72): icmp_seq=1 ttl=64 time=0.484 ms
64 bytes from plm2.hcs10.com (10.48.50.72): icmp_seq=2 ttl=64 time=0.493 ms
64 bytes from plm2.hcs10.com (10.48.50.72): icmp_seq=3 ttl=64 time=0.441 ms
64 bytes from plm2.hcs10.com (10.48.50.72): icmp_seq=4 ttl=64 time=0.590 ms

--- plm2.hcs10.com ping statistics ---
4 packets transmitted, 4 received, 0% packet loss, time 3021ms
rtt min/avg/max/mdev = 0.441/0.502/0.590/0.054 ms
```

솔루션 2.

HLM 로그는 HLM이 PLM 인스턴스와 REST 연결을 생성할 수 있지만 PLM은 "404 Not Found(404 찾을 수 없음)"라는 오류 메시지와 함께 회신을 다시 합니다.

```
2016-09-02 17:01:08,561 INFO [63414] ELMApi: initialized with connection timeout, connected to
10.48.55.29

2016-09-02 17:01:08,561 INFO [63414] HLMCoreAgent:null0_CreateELMRequest validating connection
to LM

2016-09-02 17:01:08,561 DEBUG [63414] ELMApi: validateConnection Called

2016-09-02 17:01:08,614 ERROR [63414] HLMCoreAgent:CreateELMRequest Exception: GET
https://10.48.55.29/elm-resources returned a response status of 404 Not Found

2016-09-02 17:01:08,616 DEBUG [63414] Agent: sending to [SDRUI]
```

```
<com.cisco.hcs.HLM.jms.CreateELMResponse>

  <messageType>CreateELMResponse</messageType>

  <source>

    <serviceName>HLM</serviceName>

    <instance>HLMCORE</instance>

  </source>

  <destination>

    <serviceName>SDRUI</serviceName>

    <instance>NBI-HLM-v90-LIB0</instance>

  </destination>

  <sessionId>b0a354ec-6249-4cf6-ac7d-f73bac6918d4</sessionId>

  <fault>true</fault>

  <exception>

    <detailMessage>GET https://10.48.55.29/elm-resources returned a response status of 404 Not
Found</detailMessage>
```

```

<stackTrace>

<trace>com.cisco.hcs.HLM.core.HLMCoreAgent$null0_CreateELMRequest.fire(HLMCoreAgent.java:363)</t
race>

    <trace>com.cisco.hcs.hcsagent.agent.AgentFSM.fireTransition(AgentFSM.java:554)</trace>

    <trace>com.cisco.hcs.hcsagent.agent.AgentFSM.fire(AgentFSM.java:445)</trace>

    <trace>com.cisco.hcs.hcsagent.agent.Agent.process(Agent.java:324)</trace>

    <trace>com.cisco.hcs.hcsagent.agent.AgentTask.run(AgentTask.java:75)</trace>

    <trace>java.util.concurrent.Executors$RunnableAdapter.call(Executors.java:471)</trace>

    <trace>java.util.concurrent.FutureTask.run(FutureTask.java:262)</trace>

<trace>java.util.concurrent.ThreadPoolExecutor.runWorker(ThreadPoolExecutor.java:1145)</trace>

<trace>java.util.concurrent.ThreadPoolExecutor$Worker.run(ThreadPoolExecutor.java:615)</trace>

    <trace>java.lang.Thread.run(Thread.java:745)</trace>

</stackTrace>

<suppressedExceptions class="java.util.Collections$UnmodifiableRandomAccessList" resolves-
to="java.util.Collections$UnmodifiableList">

    <c class="list"/>

    <list reference="../c"/>

</suppressedExceptions>

</exception>

<Fork>false</Fork>

<requeueCount>0</requeueCount>

</com.cisco.hcs.HLM.jms.CreateELMResponse>

```

```

2016-09-02 17:01:08,618 DEBUG [63414] Agent: Sent message to SDRUI(NBI-HLM-v90-LIB0)
2016-09-02 17:01:08,618 DEBUG [63414] HLMCoreAgent:CreateELMResponse message was sent.
2016-09-02 17:01:11,625 INFO [63414] AgentFSM::currentState changed from null0 to null0

```

The PLM API services must be activated in order to fix the issue.

Run the following commands from PLM CLI.

```
admin:utils service activate Cisco Prime LM Resource API
```

```
Service Manager is running
```

```
Cisco Prime LM Resource API[STARTED]
```

```
admin:utils service activate Cisco Prime LM Resource Legacy API
```

```
Service Manager is running
```

```
Cisco Prime LM Resource Legacy API[STARTED]
```

다음을 확인합니다.

PLM CLI에서 명령을 실행합니다.

```
admin utils service list
```

```
Cisco Prime LM Admin[STARTED]
```

```
Cisco Prime LM DB[STARTED]
```

```
Cisco Prime LM Resource API[STARTED]
```

```
Cisco Prime LM Resource Legacy API[STARTED]
```

솔루션 3.

HLM 로그는 PLM이 데모 모드에서 실행됨을 보여줍니다.

```
11 | 2016-09-02 05:21:07.615 | [63406] | SdlSig | CreateELMRequest | null0 | HLM(HLMCORE) | SDRUI(NBI-HLM-v90-LIB0) | null
```

```
2016-09-02 17:21:07,615 INFO [63406] HLMCoreAgent:null0_CreateELMRequest is fired...
```

```
2016-09-02 17:21:07,615 INFO [63406] HLMCoreAgent:null0_CreateELMRequest recieved
```

```
2016-09-02 17:21:07,615 INFO [63406] HLMCoreAgent:elmName PLM2
```

```
2016-09-02 17:21:07,615 INFO [63406] HLMCoreAgent:elmHost 10.48.55.29
```

```
2016-09-02 17:21:07,615 INFO [63406] HLMCoreAgent:elmUser administrator
```

```
2016-09-02 17:21:07,615 INFO [63406] HLMCoreAgent:elmPass *****
```

```
2016-09-02 17:21:07,615 INFO [63406] HLMCoreAgent:deploymentMode HCS
```

```
2016-09-02 17:21:07,615 INFO [63406] HLMCoreAgent:null0_CreateELMRequest opening REST connection to supplied LM
```

```
2016-09-02 17:21:07,615 INFO [63406] ELMApi: init, connecting to 10.48.55.29
```

```
2016-09-02 17:21:07,615 DEBUG [63406] Got the sslCtx
```

2016-09-02 17:21:07,615 INFO [63406] Initialized the context
2016-09-02 17:21:07,687 INFO [63406] ELMApi: initialized with connection timeout, connected to 10.48.55.29
2016-09-02 17:21:07,687 INFO [63406] HLMCoreAgent:null0_CreateELMRequest validating connection to LM
2016-09-02 17:21:07,687 DEBUG [63406] ELMApi: validateConnection Called
2016-09-02 17:21:07,795 DEBUG [63406] ELMApi: connection Validated
2016-09-02 17:21:07,795 DEBUG [63406] ELMApi: getELMReg Called
2016-09-02 17:21:07,846 INFO [63406] HLMCoreAgent:Found LM to be in Demo Mode
2016-09-02 17:21:07,846 DEBUG [63406] HLMCoreAgent: CreateELMRequest closing the connection
2016-09-02 17:21:07,847 DEBUG [63406] Agent: sending to [SDRUI]

```
<com.cisco.hcs.HLM.jms.CreateELMResponse>  
  
  <messageType>CreateELMResponse</messageType>  
  
  <source>  
  
    <serviceName>HLM</serviceName>  
  
    <instance>HLMCORE</instance>  
  
  </source>  
  
  <destination>  
  
    <serviceName>SDRUI</serviceName>  
  
    <instance>NBI-HLM-v90-LIB0</instance>  
  
  </destination>  
  
  <sessionID>ae3b7f12-d5cb-4db4-bc37-291833d00f83</sessionID>  
  
  <fault>true</fault>  
  
  <exception>  
  
    <detailMessage>ELM is in demo license.</detailMessage>  
  
    <stackTrace>
```

```
<com.cisco.hcs.HLM.jms.CreateELMResponse>  
  
  <messageType>CreateELMResponse</messageType>  
  
  <source>
```

```
<serviceName>HLM</serviceName>

<instance>HLMCORE</instance>

</source>

<destination>

  <serviceName>SDRUI</serviceName>

  <instance>NBI-HLM-v90-LIB0</instance>

</destination>

<sessionId>ab8cbfc5-cbe5-4c3f-8c33-324517d69d7d</sessionId>

<fault>>true</fault>

<exception>

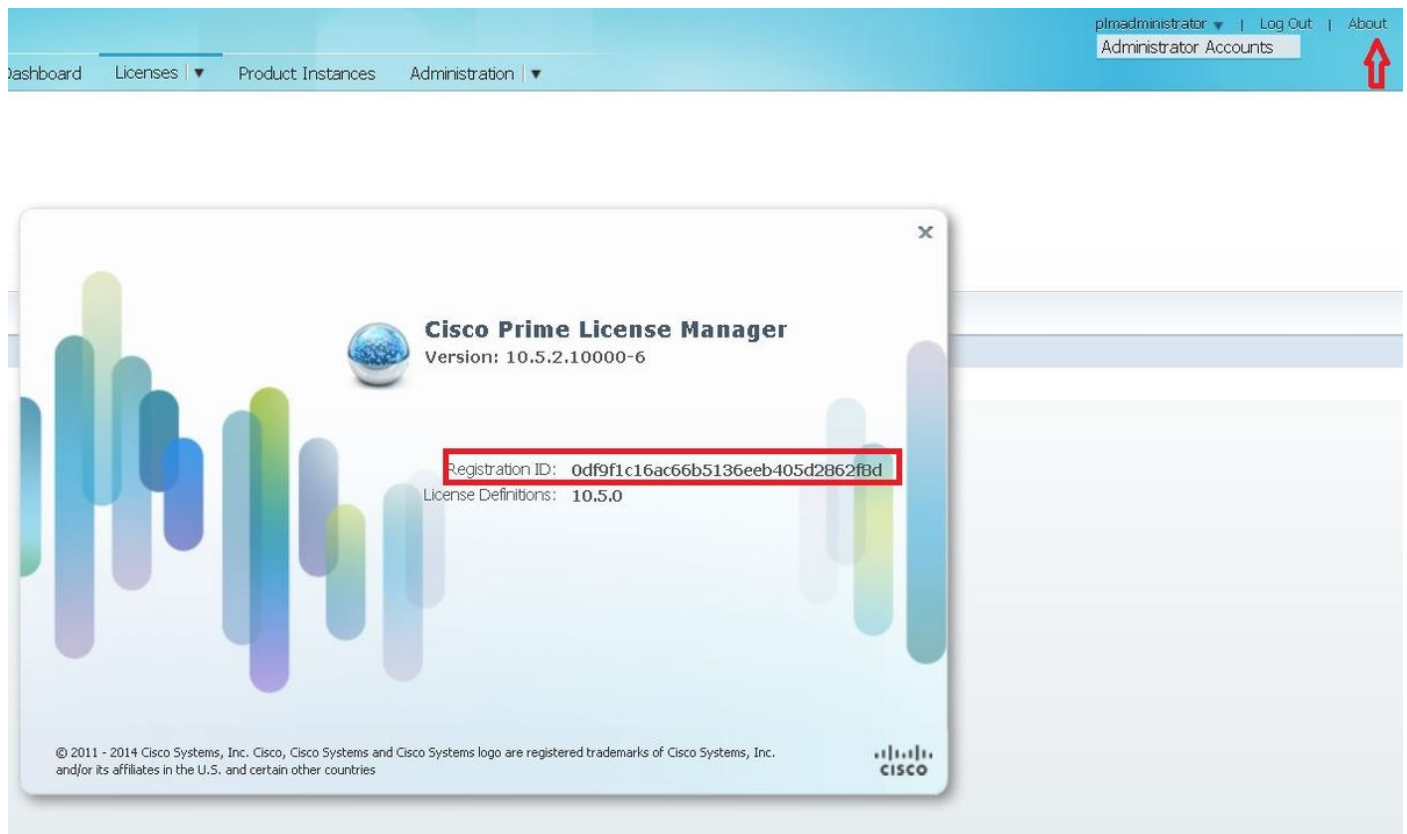
  <detailMessage>ELM is in demo license.</detailMessage>

  <stackTrace>
```

PLM에 HCS 라이선스를 추가하고 PLM을 다시 추가하려고 합니다.

다음을 확인합니다.

PLM 사용자 인터페이스에 로그인하고 **About(정보)**을 클릭합니다.HCS 라이선스를 추가한 후 PLM은 이미지에 표시된 대로 유효한 등록 ID를 표시합니다.



솔루션 4.

HLM은 PLM에 연결할 수 있지만 PLM은 401 메시지로 회신합니다.

```
12 | 2016-09-02 05:22:51.594 | [63414] | SdlSig | CreateELMRequest | null0 | HLM(HLMCORE) | SDRUI(NBI-HLM-v90-LIB0) | null

2016-09-02 17:22:51,594 INFO [63414] HLMCoreAgent:null0_CreateELMRequest is fired...

2016-09-02 17:22:51,594 INFO [63414] HLMCoreAgent:null0_CreateELMRequest recieved

2016-09-02 17:22:51,595 INFO [63414] HLMCoreAgent:elmName PLM2

2016-09-02 17:22:51,595 INFO [63414] HLMCoreAgent:elmHost 10.48.55.29

2016-09-02 17:22:51,595 INFO [63414] HLMCoreAgent:elmUser administrator

2016-09-02 17:22:51,595 INFO [63414] HLMCoreAgent:elmPass *****

2016-09-02 17:22:51,595 INFO [63414] HLMCoreAgent:deploymentMode HCS

2016-09-02 17:22:51,595 INFO [63414] HLMCoreAgent:null0_CreateELMRequest opening REST connection to supplied LM

2016-09-02 17:22:51,595 INFO [63414] ELMApi: init, connecting to 10.48.55.29

2016-09-02 17:22:51,595 DEBUG [63414] Got the sslCtx

2016-09-02 17:22:51,595 INFO [63414] Initialized the context

2016-09-02 17:22:51,673 INFO [63414] ELMApi: initialized with connection timeout, connected to 10.48.55.29

2016-09-02 17:22:51,673 INFO [63414] HLMCoreAgent:null0_CreateELMRequest validating connection to LM

2016-09-02 17:22:51,673 DEBUG [63414] ELMApi: validateConnection Called

2016-09-02 17:22:53,546 ERROR [63414] HLMCoreAgent:CreateELMRequest Exception: GET https://10.48.55.29/elm-resources returned a response status of 401 Unauthorized

2016-09-02 17:22:53,548 DEBUG [63414] Agent: sending to [SDRUI]

-----

<com.cisco.hcs.HLM.jms.CreateELMResponse>

  <messageType>CreateELMResponse</messageType>

  <source>

    <serviceName>HLM</serviceName>

    <instance>HLMCORE</instance>

  </source>

  <destination>

    <serviceName>SDRUI</serviceName>

    <instance>NBI-HLM-v90-LIB0</instance>

  </destination>
```

```
<sessionID>06e919ba-1c30-47bb-b72d-a4a0a1ca049c</sessionID>

<fault>>true</fault>

<exception>

  <detailMessage>GET https://10.48.55.29/elm-resources returned a response status of 401
Unauthorized</detailMessage>

  <stackTrace>

<trace>com.cisco.hcs.HLM.core.HLMCoreAgent$null0_CreateELMRequest.fire(HLMCoreAgent.java:363)</t
race>
```

PLM OS 관리자 사용자 ID 및 비밀번호를 추가합니다.

솔루션 5.

HLM은 PLM에 연결할 수 있지만 PLM은 호환되지 않는 버전으로 다시 회신합니다.

```
2016-09-05 11:53:19,131 INFO [63394] HLMCoreAgent:null0_CreateELMRequest is fired...
2016-09-05 11:53:19,131 INFO [63394] HLMCoreAgent:null0_CreateELMRequest recieved
2016-09-05 11:53:19,132 INFO [63394] HLMCoreAgent:elmName PLM11
2016-09-05 11:53:19,132 INFO [63394] HLMCoreAgent:elmHost 10.48.53.120
2016-09-05 11:53:19,132 INFO [63394] HLMCoreAgent:elmUser admin
2016-09-05 11:53:19,132 INFO [63394] HLMCoreAgent:elmPass *****
2016-09-05 11:53:19,132 INFO [63394] HLMCoreAgent:deploymentMode HCS
2016-09-05 11:53:19,132 INFO [63394] HLMCoreAgent:null0_CreateELMRequest opening REST
connection to supplied LM
2016-09-05 11:53:19,132 INFO [63394] ELMapi: init, connecting to 10.48.53.120
2016-09-05 11:53:19,132 DEBUG [63394] Got the sslCtx
2016-09-05 11:53:19,132 INFO [63394] Initialized the context
2016-09-05 11:53:19,206 INFO [63394] ELMapi: initialized with connection timeout, connected to
10.48.53.120
2016-09-05 11:53:19,206 INFO [63394] HLMCoreAgent:null0_CreateELMRequest validating connection
to LM
2016-09-05 11:53:19,206 DEBUG [63394] ELMapi: validateConnection Called
2016-09-05 11:53:19,457 DEBUG [63394] ELMapi: connection Validated
2016-09-05 11:53:19,457 DEBUG [63394] ELMapi: getELMReg Called
2016-09-05 11:53:19,560 DEBUG [63394] ELMapi: getELMVer Called
```

```
2016-09-05 11:53:19,667 DEBUG [63394] HLMCoreAgent:null0_createELMRequest LM PLM11 version is 11.0.1.10000-2
2016-09-05 11:53:19,667 DEBUG [63394] hlmSDRUtil.createELM
2016-09-05 11:53:19,669 DEBUG [63394] hlmSDRUtil.getHCMFDeploymentMode
2016-09-05 11:53:19,669 DEBUG [63394] hlmSDRUtil.beginTransaction
2016-09-05 11:53:19,670 DEBUG [63394] hlmSDRUtil.commitTransaction
2016-09-05 11:53:19,671 DEBUG [63394] hlmSDRUtil.beginTransaction
2016-09-05 11:53:19,672 INFO [63394] LM version is 11.0.1.10000-2
2016-09-05 11:53:19,673 ERROR [63394] hlmSDRUtil.createELM: SDR exception(SDRSyncSession): null
2016-09-05 11:53:19,673 DEBUG [63394] hlmSDRUtil.rollbackTransaction
2016-09-05 11:53:19,673 ERROR [63394] HLMCoreAgent:CreateELMRequest Exception: Attribute TypeELMVersion is required.
```

추가된 PLM 릴리스가 HCM-F에서 지원되며 HCS 호환성 매트릭스를 참조하는지 확인합니다.

관련 정보

- http://www.cisco.com/c/en/us/td/docs/voice_ip_comm/hcs/10_6_1/HCMF_Product/Troubleshooting_Guide/CHCS_BK_C434C53C_00_cisco-hcm-f-troubleshooting-guide-10_6_1/CHCS_BK_C434C53C_00_cisco-hcm-f-troubleshooting-guide-10_6_1_chapter_010.html
- <https://www.cisco.com/c/en/us/support/docs/unified-communications/hosted-collaboration-solution-hcs/119377-config-hcmf-00.html>
- [기술 지원 및 문서 - Cisco Systems](#)