

目次

[概要](#)

[前提条件](#)

[要件](#)

[使用するコンポーネント](#)

[ログイン Location を変更する方法](#)

[SRV ログイン \(ICD.log \)](#)

[Web Admin 記録](#)

[LDAP ログイン \(ldaptrace/ldapwarning.log \)](#)

[CUPS 記録 \(cupsplugin.log \)](#)

[CTI サーバ \(ctiserverlog \)](#)

[確認](#)

[トラブルシューティング](#)

[Cisco サポート コミュニティ - 特集対話](#)

概要

Cisco Unified Attendant Console CUAC C:\Program x86\Cisco\Logging

Cisco

- CUAC
- Microsoft Windows 2008 Server

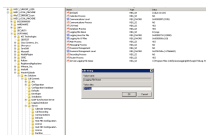
- CUAC 10.x
- Microsoft Windows 2008 Server

Location

SRV ICD.log

1.

Computer\HKEY_LOCAL_MACHINE\SOFTWARE\Wow6432Node\Arc \ \



2.

Web Admin

1.

Computer\HKEY_LOCAL_MACHINE\SOFTWARE\Wow6432Node\Arc \ \ Web Admin \

Name	Type	Data
(Default)	REG_SZ	(value not set)
API Clients Level	REG_DWORD	0x00000103 (259)
API Clients Process	REG_SZ	YES
Clerks Level	REG_DWORD	0x00000003 (3)
Clerks Process	REG_SZ	YES
Data Objects Level	REG_DWORD	0x00000002 (2)
Data Objects Process	REG_SZ	NO
External APIs Level	REG_DWORD	0x00000202 (514)
External APIs Process	REG_SZ	YES
Internal Objects Level	REG_DWORD	0x00000002 (2)
Internal Objects Process	REG_SZ	NO
Logging File Name	REG_SZ	D:\Logs
Logging Lines Per File	REG_DWORD	0x0000+e20 (20000)
Logging No Of Files	REG_DWORD	0x00000032 (50)
Management Level	REG_DWORD	0x00000103 (259)
Management Process	REG_SZ	YES
Request Response Level	REG_DWORD	0x00000003 (3)
Request Response Process	REG_SZ	YES
System Level	REG_DWORD	0x00000103 (259)
System Process	REG_SZ	YES

2.

LDAP ldaptrace/ldapwarning.log

1. レジストリ エディタの指定された位置へのナビゲート。

Computer\HKEY_LOCAL_MACHINE\SOFTWARE\Wow6432Node\Arc \ \ LDAP \

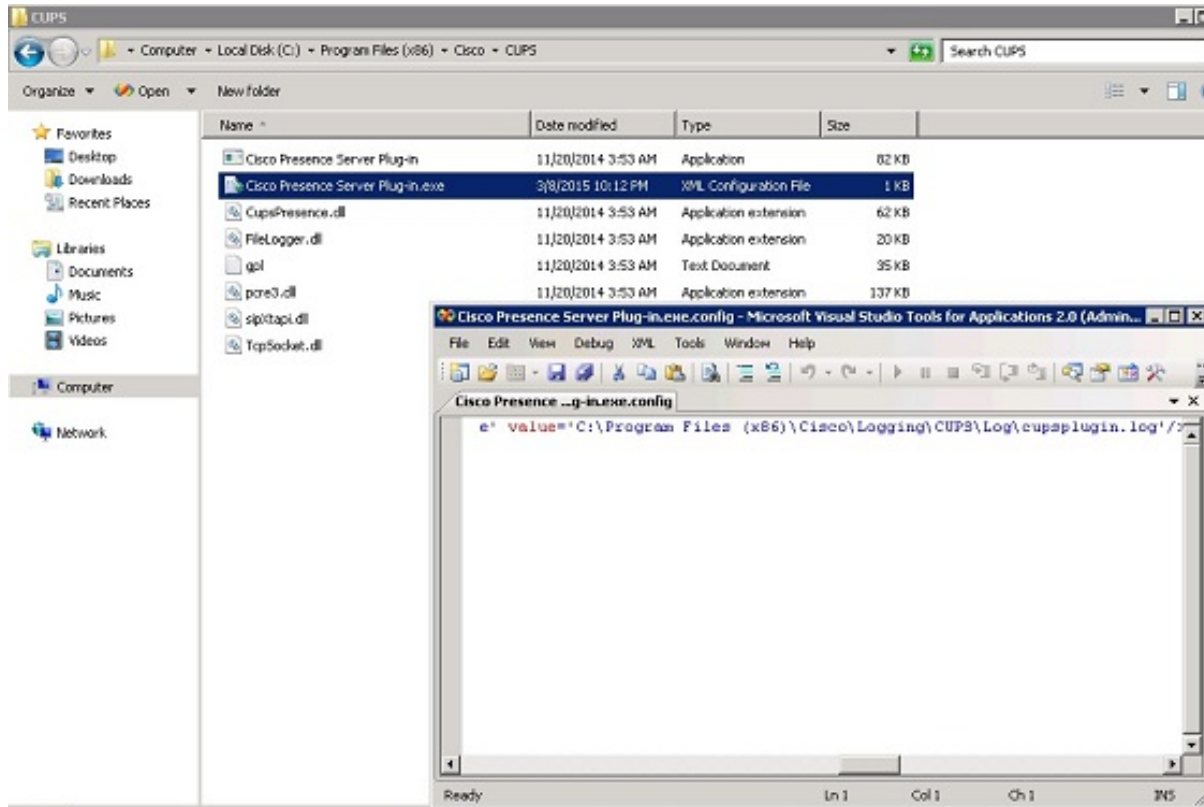
Name	Type	Data
(Default)	REG_SZ	(value not set)
Arc Source Level	REG_DWORD	0x00000007 (2031623)
External Source Level	REG_DWORD	0x00000007 (4128775)
Lines Per File	REG_DWORD	0x00000040 (200000)
Logging File Name	REG_SZ	D:\logs
Management Level	REG_DWORD	0x00000007 (1933417)
MSI Server Level	REG_DWORD	0x00000007 (6684679)
Network Level	REG_DWORD	0x00000001 (193217)
No. of Logging Files	REG_DWORD	0x0000000a (10)

2.

CUPS cupsplugin.log

: C:\Program x86)\Cisco\CUPS

1. Cisco in.exe XML



2. XML

CTI ctiserverlog

: C:\Program x86)\Cisco\CUPS

1. CTI Server.exe XML

