

# ローカル拡張認証を使用してCisco VPN Client 3.x for Windows を IOS へ設定する方法

## 目次

[概要](#)

[はじめに](#)

[表記法](#)

[前提条件](#)

[使用するコンポーネント](#)

[設定](#)

[ネットワーク図](#)

[設定](#)

[スプリットトンネリングの有効化](#)

[確認](#)

[トラブルシューティング](#)

[クライアント ログ](#)

[関連情報](#)

## 概要

このドキュメントでは、ローカル拡張認証および Cisco VPN Client を使用してルータ間の接続を設定する方法を示します。Cisco IOS<sup>®</sup> ソフトウェア リリース 12.2(15)T2 以降では、Cisco VPN Client 3.x からの接続がサポートされています。VPN Client 3.x は Diffie Hellman ( DH ) のグループ 2 ポリシーを使用しています。isakmp policy # group 2 コマンドにより、3.x クライアントからの接続が可能になります。

Cisco Secure VPN Client 1.1 を使用してこれらのデバイスを設定する方法については、「[ローカル拡張認証を使用した Cisco Secure VPN Client 1.1 for Windows の IOS 設定](#)」を参照してください。

TACACS+ プロトコルを使用して外部でユーザ認証を行うシナリオについての詳細は、「[TACACS+ ユーザ認証を使用する IOS ルータと Cisco VPN Client 4.x for Windows の間の IPsec トンネルの設定例](#)」を参照してください。

RADIUS プロトコルを使用して外部でユーザ認証を行うシナリオについての詳細は、「[RADIUS をユーザ認証に使用する Cisco IOS ルータと Cisco VPN Client 4.x for Windows の間の IPsec の設定](#)」を参照してください。

## [はじめに](#)

## [表記法](#)

ドキュメント表記の詳細は、『[シスコテクニカルティップスの表記法](#)』を参照してください。

## 前提条件

設定を開始する前に、次の前提条件が満たされていることを確認してください。

- IP Security ( IPsec ) 用に割り当てられるためのアドレスのプール
- 名前が「cisco」でパスワードが「cisco」に設定された IOS ルータのローカル ユーザ
- パスワードが「cisco123」に設定された「3000clients」という名前のグループ

## 使用するコンポーネント

このドキュメントの情報は、次のソフトウェアとハードウェアのバージョンに基づくものです。

- 12.2(15)T2 が動作する 3640 ルータ
  - Cisco VPN Client for Windows バージョン 3.5 ( どの VPN Client 3.x でも動作します )
- ルータでの **show version** コマンドからの出力を次に示します。

```
3640#show version
Cisco Internetwork Operating System Software
IOS (tm) 3600 Software (C3640-JK9O3S-M), Version 12.2(15)T2,
  RELEASE SOFTWARE (fc2)
TAC Support: http://www.cisco.com/tac
Copyright (c) 1986-2003 by cisco Systems, Inc.
Compiled Wed 30-Apr-03 05:42 by nmasa
Image text-base: 0x60008950, data-base: 0x6202E000
```

```
ROM: System Bootstrap, Version 11.1(20)AA2,
  EARLY DEPLOYMENT RELEASE SOFTWARE (fc1)
```

```
3640 uptime is 21 hours, 29 minutes
System returned to ROM by reload
System image file is "flash:c3640-jk9o3s-mz.122-15.T2.bin"
```

This product contains cryptographic features and is subject to United States and local country laws governing import, export, transfer and use. Delivery of Cisco cryptographic products does not imply third-party authority to import, export, distribute or use encryption. Importers, exporters, distributors and users are responsible for compliance with U.S. and local country laws. By using this product you agree to comply with applicable laws and regulations. If you are unable to comply with U.S. and local laws, return this product immediately.

A summary of U.S. laws governing Cisco cryptographic products may be found at:  
<http://www.cisco.com/wvl/export/crypto/tool/stqrg.html>

If you require further assistance please contact us by sending email to [export@cisco.com](mailto:export@cisco.com).

```
cisco 3640 (R4700) processor (revision 0x00)
  with 126976K/4096K bytes of memory.
Processor board ID 22789386
R4700 CPU at 100Mhz, Implementation 33, Rev 1.0
Bridging software.
```

X.25 software, Version 3.0.0.  
SuperLAT software (copyright 1990 by Meridian Technology Corp).  
TN3270 Emulation software.  
2 Ethernet/IEEE 802.3 interface(s)  
4 Serial network interface(s)  
DRAM configuration is 64 bits wide with parity disabled.  
125K bytes of non-volatile configuration memory.  
32768K bytes of processor board System flash (Read/Write)  
16384K bytes of processor board PCMCIA Slot0 flash (Read/Write)

Configuration register is 0x102

3640#

このドキュメントの情報は、特定のラボ環境にあるデバイスに基づいて作成されたものです。このドキュメントで使用するすべてのデバイスは、初期（デフォルト）設定の状態から起動しています。対象のネットワークが実稼働中である場合には、どのような作業についても、その潜在的な影響について確実に理解しておく必要があります。

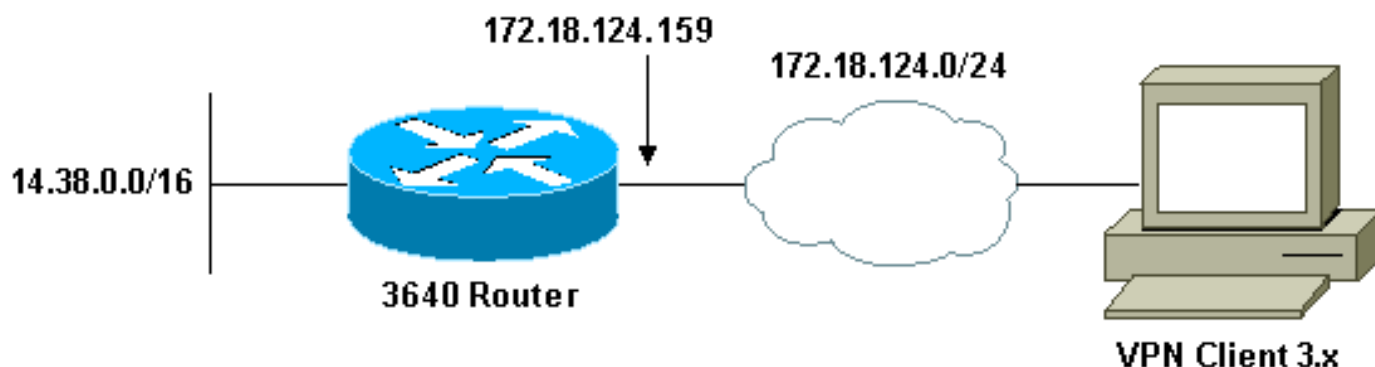
## 設定

この項では、このドキュメントで説明する機能の設定に必要な情報を提供します。

注: このドキュメントで使用されているコマンドの詳細を調べるには、[Command Lookup Tool](#) ( [登録ユーザ専用](#) ) を使用してください。

## ネットワーク図

このドキュメントでは次の図に示すネットワーク



## 設定

このドキュメントでは次に示す設定を使用しています。

- [3640 ルータの設定](#)
- [VPN クライアント 3.x の設定](#)

## 3640 ルータの設定

3640 ルータ
3640#show run

```
Building configuration...

Current configuration : 1884 bytes
!
version 12.2
service timestamps debug uptime
service timestamps log uptime
no service password-encryption
!
hostname 3640
!
!--- Enable Authentication, Authorizing and Accounting
(AAA) !--- for user authentication and group
authorization. aaa new-model
!
!--- To enable X-Auth for user authentication, !---
enable the aaa authentication commands.

aaa authentication login userauthen local

!--- To enable group authorization, !--- enable the aaa
authorization commands.

aaa authorization network groupauthor local
!
!--- For local authentication of the IPSec user, !---
create the user with password. username cisco password 0
cisco
!
ip subnet-zero
!
!
!
ip audit notify log
ip audit po max-events 100
!
!--- Create an Internet Security Association and !---
Key Management Protocol (ISAKMP) policy for Phase 1
negotiations. crypto isakmp policy 3
encr 3des
authentication pre-share
group 2
!
!--- Create a group that will be used to specify the !--
- Windows Internet Naming Service (WINS) and !--- Domain
Naming Service (DNS) server addresses to the client, !--
- along with the pre-shared key for authentication.
crypto isakmp client configuration group 3000client
key cisco123
dns 14.1.1.10
wins 14.1.1.20
domain cisco.com
pool ippool
!
!--- Create the Phase 2 Policy for actual data
encryption. crypto ipsec transform-set myset esp-3des
esp-sha-hmac
!
!--- Create a dynamic map and !--- apply the transform
set that was created above. crypto dynamic-map dynmap 10
set transform-set myset
!
!--- Create the actual crypto map, !--- and apply the
aaa lists that were created earlier. crypto map
```

```
clientmap client authentication list userauthen
crypto map clientmap isakmp authorization list
groupauthor
crypto map clientmap client configuration address
respond
crypto map clientmap 10 ipsec-isakmp dynamic dynmap
!
!
fax interface-type fax-mail
mta receive maximum-recipients 0
!
!
!--- Apply the crypto map on the outside interface.
interface Ethernet0/0 ip address 172.18.124.159
255.255.255.0
half-duplex
crypto map clientmap
!
interface Serial0/0
no ip address
shutdown
!
interface Ethernet0/1
ip address 14.38.100.201 255.255.0.0
no keepalive
half-duplex
!
interface Serial1/0
no ip address
shutdown
!
interface Serial1/1
no ip address
shutdown
!
interface Serial1/2
no ip address
shutdown
!
interface Serial1/3
no ip address
shutdown
!
interface Serial1/4
no ip address
shutdown
!
interface Serial1/5
no ip address
shutdown
!
interface Serial1/6
no ip address
shutdown
!
interface Serial1/7
no ip address
shutdown
!--- Create a pool of addresses to be assigned to the
VPN Clients. ip local pool ippool 14.1.1.100 14.1.1.200
ip classless
ip route 0.0.0.0 0.0.0.0 172.18.124.1
```

```
ip http server
ip pim bidir-enable
!
!
!
!
call rsvp-sync
!
!
mgcp profile default
!
dial-peer cor custom
!
!
!
!
!
line con 0
  exec-timeout 0 0
line aux 0
line vty 0 4
!
!
end

3640#
```

## VPN クライアント 3.x の設定

ここでは、VPN クライアント 3.x を設定する方法を示します。

1. VPN クライアントを起動し、[New] をクリックして新しい接続を作成します。



2. プロンプトが表示されたら、エントリに名前を割り当てます。必要であれば説明も入力できます。入力を終わったら Next をクリックします。



## New Connection Entry Wizard



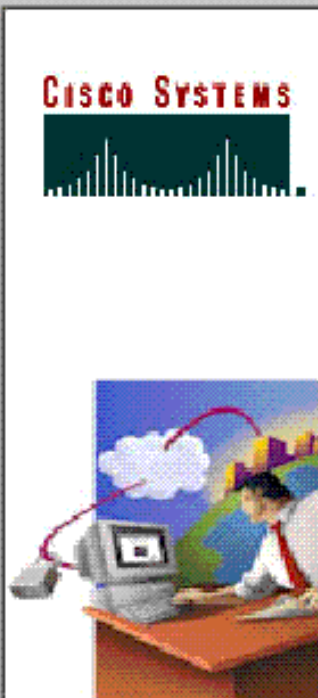
The VPN Client lets you create secure connections to remote networks. This wizard helps you create a connection entry for connecting to a specific remote network.

Name of the new connection entry:

Description of the new connection entry (optional):

3. ルータのパブリック インターフェイスの IP アドレスを入力します。 入力を終わったら Next をクリックします。

## New Connection Entry Wizard



The following information identifies the server to which you connect for access to the remote network.

Host name or IP address of the server:



4. Group Access Information の下で、グループ名とパスワードを入力します。次の例は、名前が「3000client」でパスワードが「cisco123」のグループを示しています。確認のためにパスワードをもう一度入力し、[Next] をクリックして続けます。

**NEW CONNECTION ENTRY WIZARD**

Your administrator may have provided you with group parameters or a digital certificate to authenticate your access to the remote server. If so, select the appropriate authentication method and complete your entries .

**Group Access Information**

Name: 3000client

Password: AAAAAAAAAA

Confirm Password: AAAAAAAAAA

**Certificate**

Name: Administrator (Microsoft)

Validate Certificate...

< Back    Next >    Cancel    Help

5. Finish をクリックしてプロファイルをレジストリに保存します。

## New Connection Entry Wizard



You have successfully created a new virtual private networking connection entry named:

IOS

Click Finish to save this entry.

To connect to the remote network, select the Connect button from the main window.

To modify this connection entry, click Options on the main window and select Properties from the menu that appears.

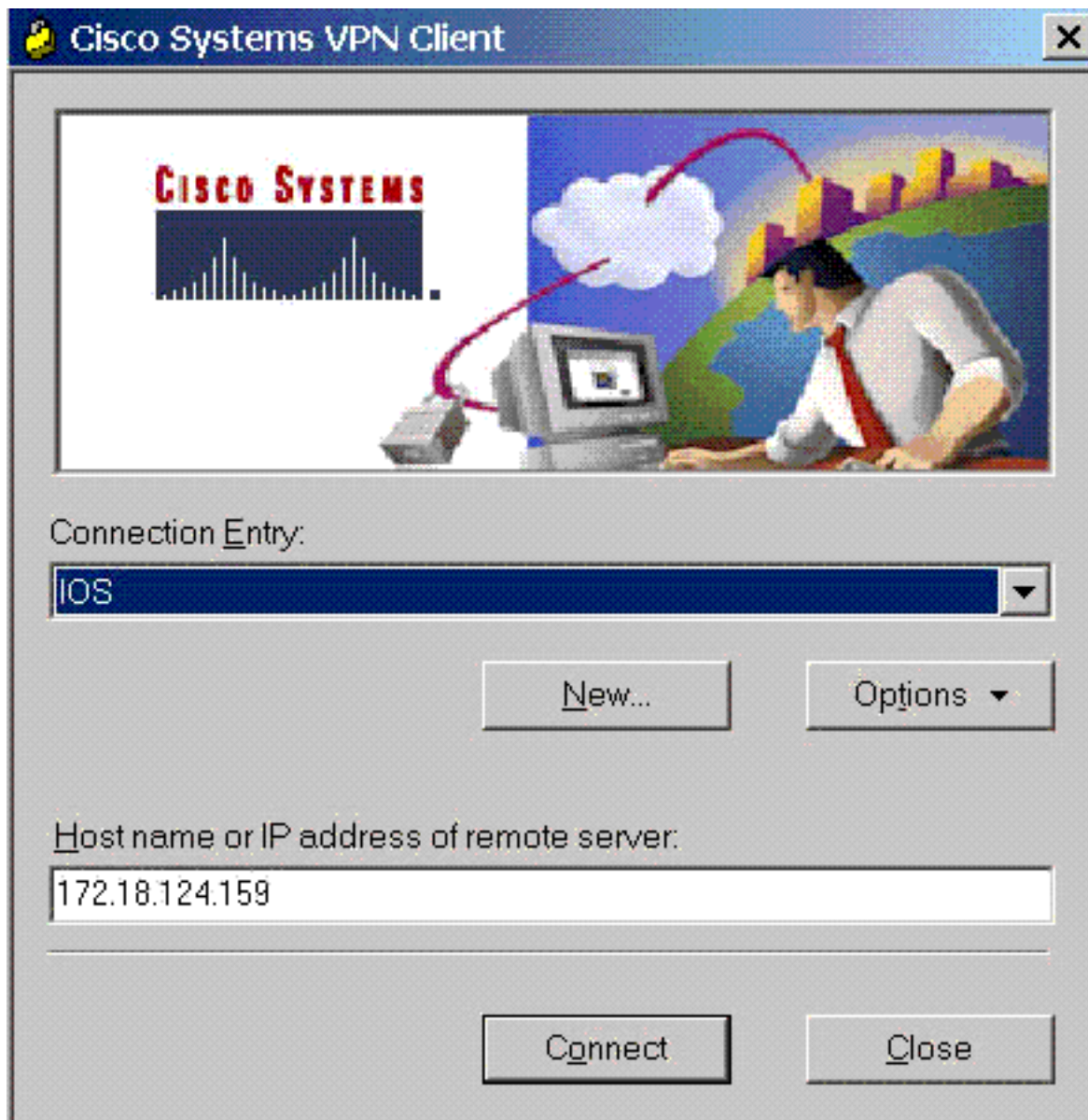
< Back

Finish

Cancel

Help

6. Connect をクリックしてルータに接続します。ウィンドウに「Negotiating security profiles」および「Your link is now secure」というメッセージが表示されます。



## スプリット トンネリングの有効化

VPN 接続に対して分割トンネリングを有効にするには、ルータにアクセスリストが設定されていることを確認します。次の例では、**access-list 108** コマンドがスプリット トンネリング用のグループに関連付けられており、トンネルは 172.18.124.X/24 ネットワークに対して形成されます。アクセスリスト 108 で定義されていないデバイス (インターネット上のデバイスなど) へのトラフィックフローは暗号化されません。

```
access-list 108 permit ip 14.38.0.0 0.0.255.255
 14.1.1.0 0.0.0.255
```

次に、グループのプロパティにアクセス リストを適用します。

```
crypto isakmp client configuration group 3000client
key cisco123
dns 14.38.100.10
wins 14.38.100.20
domain cisco.com
```

```
pool ippool
acl 108
```

## 確認

このセクションでは、設定が正常に動作しているかどうかを確認する際に役立つ情報を提供しています。

特定の **show** コマンドは、[Output Interpreter Tool](#) ( [登録ユーザ専用](#) ) によってサポートされています。このツールを使用すると、**show** コマンド出力の分析を表示できます。

```
3640#show crypto isakmp sa
dst          src          state      conn-id    slot
172.18.124.159 172.18.124.96  QM_IDLE    3          0
```

```
3640#show crypto ipsec sa
interface: Ethernet0/0
Crypto map tag: clientmap, local addr. 172.18.124.96
```

```
protected vrf:
local ident (addr/mask/prot/port): (0.0.0.0/0.0.0.0/0/0)
remote ident (addr/mask/prot/port):
  (14.1.1.106/255.255.255.255/0/0)
current_peer: 172.18.124.159:500
PERMIT, flags={}
#pkts encaps: 6, #pkts encrypt: 6, #pkts digest 6
#pkts decaps: 6, #pkts decrypt: 6, #pkts verify 6
#pkts compressed: 0, #pkts decompressed: 0
#pkts not compressed: 0, #pkts compr. failed: 0
#pkts not decompressed: 0, #pkts decompress failed: 0
#send errors 0, #recv errors 0
```

```
local crypto endpt.: 172.18.124.96,
  remote crypto endpt.: 172.18.124.159
path mtu 1500, media mtu 1500
current outbound spi: D026E0BA
```

```
inbound esp sas:
spi: 0x84E901C8(2229862856)
transform: esp-3des esp-md5-hmac ,
in use settings ={Tunnel, }
slot: 0, conn id: 2002, flow_id: 3, crypto map: clientmap
sa timing: remaining key lifetime (k/sec): (4450694/3532)
IV size: 8 bytes
replay detection support: Y
```

```
inbound ah sas:
```

```
inbound pcp sas:
```

```
outbound esp sas:
spi: 0xD026E0BA(3492208826)
transform: esp-3des esp-md5-hmac ,
in use settings ={Tunnel, }
slot: 0, conn id: 2003, flow_id: 4, crypto map: clientmap
sa timing: remaining key lifetime (k/sec): (4450699/3532)
IV size: 8 bytes
replay detection support: Y
```

```

outbound ah sas:

outbound pcp sas:

protected vrf:
local ident (addr/mask/prot/port):
  (172.18.124.159/255.255.255.255/0/0)
remote ident (addr/mask/prot/port):
  (14.1.1.105/255.255.255.255/0/0)
current_peer: 172.18.124.159:500
PERMIT, flags={}
#pkts encaps: 6, #pkts encrypt: 6, #pkts digest 6
#pkts decaps: 6, #pkts decrypt: 6, #pkts verify 6
#pkts compressed: 0, #pkts decompressed: 0
#pkts not compressed: 0, #pkts compr. failed: 0
#pkts not decompressed: 0, #pkts decompress failed: 0
#send errors 0, #recv errors 0

local crypto endpt.: 172.18.124.159,
  remote crypto endpt.: 172.18.124.96
path mtu 1500, media mtu 1500
current outbound spi: E8E398F8

inbound esp sas:
spi: 0xDFE24DFC(3756150268)
transform: esp-3des esp-md5-hmac ,
in use settings ={Tunnel, }
slot: 0, conn id: 2000, flow_id: 1, crypto map: clientmap
sa timing: remaining key lifetime (k/sec): (4572253/3530)
IV size: 8 bytes
replay detection support: Y

inbound ah sas:

inbound pcp sas:

outbound esp sas:
spi: 0xE8E398F8(3907229944)
transform: esp-3des esp-md5-hmac ,
in use settings ={Tunnel, }
slot: 0, conn id: 2001, flow_id: 2, crypto map: clientmap
sa timing: remaining key lifetime (k/sec): (4572253/3528)
IV size: 8 bytes
replay detection support: Y

outbound ah sas:

outbound pcp sas:

```

3640#show crypto engine connections active

ID	Interface	IP-Address	State	Algorithm	Encrypt	Decrypt
3	Ethernet0/0	172.18.124.159	set	HMAC_MD5+3DES_56_C	0	0
2000	Ethernet0/0	172.18.124.159	set	HMAC_MD5+3DES_56_C	0	6
2001	Ethernet0/0	172.18.124.159	set	HMAC_MD5+3DES_56_C	6	0
2004	Ethernet0/0	172.18.124.159	set	HMAC_MD5+3DES_56_C	0	6
2005	Ethernet0/0	172.18.124.159	set	HMAC_MD5+3DES_56_C	6	0

## トラブルシューティング

ここでは、設定のトラブルシューティングに役立つ情報について説明します。

```
3640#debug crypto ipsec
Crypto IPSEC debugging is on
3640#debug crypto isakmp
Crypto ISAKMP debugging is on
3640#
```

```
ISAKMP (0:0): received packet from 172.18.124.96
  dport 500 sport 500 Global (N) NEW SA
ISAKMP: Found a peer struct for 172.18.124.96, peer port 500
ISAKMP: Locking peer struct 0x63B2EAE4, IKE refcount 1 for
  crypto_ikmp_config_initialize_sa
ISAKMP (0:0): (Re)Setting client xauth list and state
ISAKMP: local port 500, remote port 500
ISAKMP: insert sa successfully sa = 63972310
ISAKMP (0:1): processing SA payload. message ID = 0
ISAKMP (0:1): processing ID payload. message ID = 0
ISAKMP (0:1): peer matches *none* of the profiles
ISAKMP (0:1): processing vendor id payload
ISAKMP (0:1): vendor ID seems Unity/DPD but major 215 mismatch
ISAKMP (0:1): vendor ID is XAUTH
ISAKMP (0:1): processing vendor id payload
ISAKMP (0:1): vendor ID is DPD
ISAKMP (0:1): processing vendor id payload
ISAKMP (0:1): vendor ID seems Unity/DPD but major 123 mismatch
ISAKMP (0:1): vendor ID is NAT-T v2
ISAKMP (0:1): processing vendor id payload
ISAKMP (0:1): vendor ID seems Unity/DPD but major 194 mismatch
ISAKMP (0:1): processing vendor id payload
ISAKMP (0:1): vendor ID is Unity
ISAKMP (0:1) Authentication by xauth preshared
ISAKMP (0:1): Checking ISAKMP transform 1 against priority 1 policy
ISAKMP: encryption AES-CBC
ISAKMP: hash SHA
ISAKMP: default group 2
ISAKMP: auth XAUTHInitPreShared
ISAKMP: life type in seconds
ISAKMP: life duration (VPI) of 0x0 0x20 0xC4 0x9B
ISAKMP: keylength of 256
ISAKMP (0:1): Encryption algorithm offered does not match policy!
ISAKMP (0:1): atts are not acceptable. Next payload is 3
ISAKMP (0:1): Checking ISAKMP transform 2 against priority 1 policy
ISAKMP: encryption AES-CBC
ISAKMP: hash MD5
ISAKMP: default group 2
ISAKMP: auth XAUTHInitPreShared
ISAKMP: life type in seconds
ISAKMP: life duration (VPI) of 0x0 0x20 0xC4 0x9B
ISAKMP: keylength of 256
ISAKMP (0:1): Encryption algorithm offered does not match policy!
ISAKMP (0:1): atts are not acceptable. Next payload is 3
ISAKMP (0:1): Checking ISAKMP transform 3 against priority 1 policy
ISAKMP: encryption AES-CBC
ISAKMP: hash SHA
ISAKMP: default group 2
ISAKMP: auth pre-share
ISAKMP: life type in seconds
ISAKMP: life duration (VPI) of 0x0 0x20 0xC4 0x9B
ISAKMP: keylength of 256
ISAKMP (0:1): Encryption algorithm offered does not match policy!
ISAKMP (0:1): atts are not acceptable. Next payload is 3
ISAKMP (0:1): Checking ISAKMP transform 4 against priority 1 policy
ISAKMP: encryption AES-CBC
```

ISAKMP: hash MD5  
ISAKMP: default group 2  
ISAKMP: auth pre-share  
ISAKMP: life type in seconds  
ISAKMP: life duration (VPI) of 0x0 0x20 0xC4 0x9B  
ISAKMP: keylength of 256  
ISAKMP (0:1): Encryh of 128  
ISAKMP (0:1): Encryption algorithm offered does not match policy!  
ISAKMP (0:1): atts are not acceptable. Next payload is 3  
ISAKMP (0:1): Checking ISAKMP transform 7 against priority 1 policy  
ISAKMP: encryption AES-CBC  
ISAKMP: hash SHA  
ISAKMP: default group 2  
ISAKMP: auth pre-share  
ISAKMP: life type in seconds  
ISAKMP: life duration (VPI) of 0x0 0x20 0xC4 0x9B  
ISAKMP: keylength of 128  
ISAKMP (0:1): Encryption algorithm offered does not match policy!  
ISAKMP (0:1): atts are not acceptable. Next payload is 3  
ISAKMP (0:1): Checking ISAKMP transform 8 against priority 1 policy  
ISAKMP: encryption AES-CBC  
ISAKMP: hash MD5  
ISAKMP: default group 2  
ISAKMP: auth pre-share  
ISAKMP: life type in seconds  
ISAKMP: life duration (VPI) of 0x0 0x20 0xC4 0x9B  
ISAKMP: keylength of 128  
ISAKMP (0:1): Encryption algorithm offered does not match policy!  
ISAKMP (0:1): atts are not acceptable. Next payload is 3  
ISAKMP (0:1): Checking ISAKMP transform 9 against priority 1 policy  
ISAKMP: encryption 3DES-CBC  
ISAKMP: hash SHA match policy!  
ISAKMP (0:1): atts are not acceptable. Next payload is 3  
ISAKMP (0:1): Checking ISAKMP transform 5 against priority 1 policy  
ISAKMP: encryption AES-CBC  
ISAKMP: hash SHA  
ISAKMP: default group 2  
ISAKMP: auth XAUTHInitPreShared  
ISAKMP: life type in seconds  
ISAKMP: life duration (VPI) of 0x0 0x20 0xC4 0x9B  
ISAKMP: keylength of 128  
ISAKMP (0:1): Encryption algorithm offered does not match policy!  
ISAKMP (0:1): atts are not acceptable. Next payload is 3  
ISAKMP (0:1): Checking ISAKMP transform 6 against priority 1 policy  
ISAKMP: encryption AES-CBC  
ISAKMP: hash MD5  
ISAKMP: default group 2  
ISAKMP: auth XAUTHInitPreShared  
ISAKMP: life type in seconds  
ISAKMP: life duration (VPI) of 0x0 0x20 0xC4 0x9B  
ISAKMP: keylength  
ISAKMP: default group 2  
ISAKMP: auth XAUTHInitPreShared  
ISAKMP: life type in seconds  
ISAKMP: life duration (VPI) of 0x0 0x20 0xC4 0x9B  
ISAKMP (0:1): Encryption algorithm offered does not match policy!  
ISAKMP (0:1): atts are not acceptable. Next payload is 3  
ISAKMP (0:1): Checking ISAKMP transform 10 against priority 1 policy  
ISAKMP: encryption 3DES-CBC  
ISAKMP: hash MD5  
ISAKMP: default group 2  
ISAKMP: auth XAUTHInitPreShared  
ISAKMP: life type in seconds  
ISAKMP: life duration (VPI) of 0x0 0x20 0xC4 0x9B



```
ISAKMP (0:1): Encryption algorithm offered does not match policy!
ISAKMP (0:1): atts are not acceptable. Next payload is 3
ISAKMP (0:1): Checking ISAKMP transform 11 against priority 1 policy
ISAKMP: encryption 3DES-CBC
ISAKMP: hash SHA
ISAKMP: default group 2
ISAKMP: auth pre-share
ISAKMP: life type in seconds
ISAKMP: life duration (VPI) of 0x0 0x20 0xC4 0x9B
ISAKMP (0:1): Encryption algorithm offered does not match policy!
ISAKMP (0:1): atts are not acceptable. Next payload is 3
ISAKMP (0:1): Checking ISAKMP transform 12 against priority 1 policy
ISAKMP: encryption 3DES-CBC
ISAKMP: hash MD5
ISAKMP: default group 2
ISAKMP: auth pre-share
ISAKMP: life type in seconds
ISAKMP: life duration (VPI) of 0x0 0x20 0xC4 0x9B
ISAKMP (0:1): Encryption algorithm offered does not match policy!
ISAKMP (0:1): atts are not acceptable. Next payload is 3
ISAKMP (0:1): Checking ISAKMP transform 13 against priority 1 policy
ISAKMP: encryption DES-CBC
ISAKMP: hash MD5
ISAKMP: default group 2
ISAKMP: auth XAUTHInitPreShared
ISAKMP: life type in seconds
ISAKMP: life duration (VPI) of 0x0 0x20 0xC4 0x9B
ISAKMP (0:1): atts are acceptable. Next payload is 3
ISAKMP (0:1): processing KE payload. message ID = 0
ISAKMP (0:1): processing NONCE payload. message ID = 0
ISAKMP (0:1): vendor ID is NAT-T v2
ISAKMP (0:1): Input = IKE_MSG_FROM_PEER, IKE_AM_EXCH
ISAKMP (0:1): Old State = IKE_READY New State = IKE_R_AM_AAA_AWAIT
ISAKMP: got callback 1
ISAKMP (0:1): SKEYID state generated
ISAKMP (0:1): constructed NAT-T vendor-02 ID
ISAKMP (0:1): SA is doing pre-shared key authentication
    plus XAUTH using id type ID_IPV4_ADDR
ISAKMP (1): ID payload
next-payload : 10
type : 1
addr : 172.18.124.159
protocol : 17
port : 0
length : 8
ISAKMP (1): Total payload length: 12
ISAKMP (0:1): constructed HIS NAT-D
ISAKMP (0:1): constructed MINE NAT-D
ISAKMP (0:1): sending packet to 172.18.124.96 my_port 500
    peer_port 500 (R) AG_INIT_EXCH
ISAKMP (0:1): Input = IKE_MSG_FROM_AAA, PRESHARED_KEY_REPLY
ISAKMP (0:1): Old State = IKE_R_AM_AAA_AWAIT New State = IKE_R_AM2
ISAKMP (0:1): received packet from 172.18.124.96 dport 500
    sport 500 Global (R) AG_INIT_EXCH
ISAKMP (0:1): processing HASH payload. message ID = 0
ISAKMP (0:1): processing NOTIFY INITIAL_CONTACT protocol 1
spi 0, message ID = 0, sa = 63972310
ISAKMP (0:1): Process initial contact,
bring down existing phase 1 and 2 SA's with local 172.18.124.159
    remote 172.18.124.96 remote port 500
ISAKMP (0:1): returning IP addr to the address pool: 14.1.1.105
ISAKMP (0:1): returning address 14.1.1.105 to pool
ISAKMP:received payload type 17
ISAKMP (0:1): Detected NAT-D payload
```

ISAKMP (0:1): recalc my hash for NAT-D  
ISAKMP (0:1): NAT match MINE hash  
ISAKMP:received payload type 17  
ISAKMP (0:1): Detected NAT-D payload  
ISAKMP (0:1): recalc his hash for NAT-D  
ISAKMP (0:1): NAT match HIS hash  
ISAKMP (0:1): SA has been authenticated with 172.18.124.96  
ISAKMP: set new node 1397605141 to CONF\_XAUTH  
ISAKMP (0:1): sending packet to 172.18.124.96  
    my\_port 500 peer\_port 500 (R) QM\_IDLE  
ISAKMP (0:1): purging node 1397605141  
ISAKMP: Sending phase 1 responder lifetime 86400  
ISAKMP (0:1): peer matches \*none\* of the profiles  
ISAKMP (0:1): Input = IKE\_MSG\_FROM\_PEER, IKE\_AM\_EXCH  
ISAKMP (0:1): Old State = IKE\_R\_AM2 New State = IKE\_P1\_COMPLETE  
IPSEC(key\_engine): got a queue event...  
ISAKMP (0:1): Need XAUTH  
ISAKMP (0:1): Input = IKE\_MSG\_INTERNAL, IKE\_PHASE1\_COMPLETE  
ISAKMP (0:1): Old State = IKE\_P1\_COMPLETE  
    New State = IKE\_XAUTH\_AAA\_START\_LOGIN\_AWAIT  
ISAKMP: got callback 1  
ISAKMP: set new node 1446280258 to CONF\_XAUTH  
ISAKMP/xauth: request attribute XAUTH\_USER\_NAME\_V2  
ISAKMP/xauth: request attribute XAUTH\_USER\_PASSWORD\_V2  
ISAKMP (0:1): initiating peer config to 172.18.124.96. ID = 1446280258  
ISAKMP (0:1): sending packet to 172.18.124.96  
    my\_port 500 peer\_port 500 (R) CONF\_XAUTH  
ISAKMP (0:1): Input = IKE\_MSG\_FROM\_AAA, IKE\_AAA\_START\_LOGIN  
ISAKMP (0:1): Old State = IKE\_XAUTH\_AAA\_START\_LOGIN\_AWAIT  
    New State = IKE\_XAUTH\_REQ\_SENT  
ISAKMP (0:1): received packet from 172.18.124.96 dport 500  
    sport 500 Global (R) CONF\_XAUTH  
ISAKMP (0:1): processing transaction payload from 172.18.124.96.  
    message ID = 1446280258  
ISAKMP: Config payload REPLY  
ISAKMP/xauth: reply attribute XAUTH\_USER\_NAME\_V2  
ISAKMP/xauth: reply attribute XAUTH\_USER\_PASSWORD\_V2  
ISAKMP (0:1): deleting node 1446280258 error FALSE  
    reason "done with xauth request/reply exchange"  
ISAKMP (0:1): Input = IKE\_MSG\_FROM\_PEER, IKE\_CFG\_REPLY  
ISAKMP (0:1): Old State = IKE\_XAUTH\_REQ\_SENT  
    New State = IKE\_XAUTH\_AAA\_CONT\_LOGIN\_AWAIT  
ISAKMP: got callback 1  
ISAKMP: set new node 117774567 to CONF\_XAUTH  
ISAKMP (0:1): initiating peer config to 172.18.124.96.  
    ID = 117774567  
ISAKMP (0:1): sending packet to 172.18.124.96 my\_port 500  
    peer\_port 500 (R) CONF\_XAUTH  
ISAKMP (0:1): Input = IKE\_MSG\_FROM\_AAA, IKE\_AAA\_CONT\_LOGIN  
ISAKMP (0:1): Old State = IKE\_XAUTH\_AAA\_CONT\_LOGIN\_AWAIT  
    New State = IKE\_XAUTH\_SET\_SENT  
ISAKMP (0:1): received packet from 172.18.124.96 dport 500  
    sport 500 Global (R) CONF\_XAUTH  
ISAKMP (0:1): processing transaction payload from 172.18.124.96.  
    message ID = 117774567  
ISAKMP: Config payload ACK  
ISAKMP (0:1): XAUTH ACK Processed  
ISAKMP (0:1): deleting node 117774567 error FALSE  
    reason "done with transaction"  
ISAKMP (0:1): Input = IKE\_MSG\_FROM\_PEER, IKE\_CFG\_ACK  
ISAKMP (0:1): Old State = IKE\_XAUTH\_SET\_SENT  
    New State = IKE\_P1\_COMPLETE  
ISAKMP (0:1): Input = IKE\_MSG\_INTERNAL, IKE\_PHASE1\_COMPLETE  
ISAKMP (0:1): Old State = IKE\_P1\_COMPLETE

```
New State = IKE_P1_COMPLETE
ISAKMP (0:1): received packet from 172.18.124.96 dport 500
sport 500 Global (R) QM_IDLE
ISAKMP: set new node 188739171 to QM_IDLE
ISAKMP (0:1): processing transaction payload from 172.18.124.96.
message ID = 188739171
ISAKMP: Config payload REQUEST
ISAKMP (0:1): checking request:
ISAKMP: IP4_ADDRESS
ISAKMP: IP4_NETMASK
ISAKMP: IP4_DNS
ISAKMP: IP4_NBNS
ISAKMP: ADDRESS_EXPIRY
ISAKMP: APPLICATION_VERSION
ISAKMP: UNKNOWN Unknown Attr: 0x7000
ISAKMP: UNKNOWN Unknown Attr: 0x7001
ISAKMP: DEFAULT_DOMAIN
ISAKMP: SPLIT_INCLUDE
ISAKMP: UNKNOWN Unknown Attr: 0x7003
ISAKMP: UNKNOWN Unknown Attr: 0x7007
ISAKMP: UNKNOWN Unknown Attr: 0x7008
ISAKMP: UNKNOWN Unknown Attr: 0x7009
ISAKMP: UNKNOWN Unknown Attr: 0x700A
ISAKMP: UNKNOWN Unknown Attr: 0x7005
ISAKMP (0:1): Input = IKE_MSG_FROM_PEER, IKE_CFG_REQUEST
ISAKMP (0:1): Old State = IKE_P1_COMPLETE
New State = IKE_CONFIG_AUTHOR_AAA_AWAIT
ISAKMP: got callback 1
ISAKMP (0:1): attributes sent in message:
Address: 0.2.0.0
ISAKMP (0:1): allocating address 14.1.1.106
ISAKMP: Sending private address: 14.1.1.106
ISAKMP: Sending IP4_DNS server address: 14.1.1.10
ISAKMP: Sending IP4_NBNS server address: 14.1.1.20
ISAKMP: Sending ADDRESS_EXPIRY seconds left to
use the address: 86396
ISAKMP: Sending APPLICATION_VERSION string: Cisco
Internetwork Operating System Software
IOS (tm) 3600 Software (C3640-JK903S-M), Version 12.2(15)T2,
RELEASE SOFTWARE (fc2)
TAC Support: http://www.cisco.com/tac
Copyright (c) 1986-2003 by cisco Systems, Inc.
Compiled Wed 30-Apr-03 05:42 by nmasa
ISAKMP (0/1): Unknown Attr: UNKNOWN (0x7000)
ISAKMP (0/1): Unknown Attr: UNKNOWN (0x7001)
ISAKMP: Sending DEFAULT_DOMAIN default domain name: cisco.com
ISAKMP (0/1): Unknown Attr: UNKNOWN (0x7003)
ISAKMP (0/1): Unknown Attr: UNKNOWN (0x7007)
ISAKMP (0/1): Unknown Attr: UNKNOWN (0x7008)
ISAKMP (0/1): Unknown Attr: UNKNOWN (0x7009)
ISAKMP (0/1): Unknown Attr: UNKNOWN (0x700A)
ISAKMP (0/1): Unknown Attr: UNKNOWN (0x7005)
ISAKMP (0:1): responding to peer config from 172.18.124.96.
ID = 188739171
ISAKMP (0:1): sending packet to 172.18.124.96 my_port 500
peer_port 500 (R) CONF_ADDR
ISAKMP (0:1): deleting node 188739171 error FALSE reason ""
ISAKMP (0:1): Input = IKE_MSG_FROM_AAA, IKE_AAA_GROUP_ATTR
ISAKMP (0:1): Old State = IKE_CONFIG_AUTHOR_AAA_AWAIT
New State = IKE_P1_COMPLETE
ISAKMP (0:1): received packet from 172.18.124.96 dport 500
sport 500 Global (R) QM_IDLE
ISAKMP: set new node -1836135476 to QM_IDLE
ISAKMP (0:1): processing HASH payload. message ID = -1836135476
```

```
ISAKMP (0:1): processing SA payload. message ID = -1836135476
ISAKMP (0:1): Checking IPsec proposal 1
ISAKMP: transform 1, ESP_AES
ISAKMP: attributes in transform:
ISAKMP: authenticator is HMAC-MD5
ISAKMP: encaps is 1
ISAKMP: key length is 256
ISAKMP: SA life type in seconds
ISAKMP: SA life duration (VPI) of 0x0 0x20 0xC4 0x9B
ISAKMP (0:1): atts are acceptable.
ISAKMP (0:1): Checking IPsec proposal 1
ISAKMP (0:1): transform 1, IPPCP LZS
ISAKMP: attributes in transform:
ISAKMP: encaps is 1
ISAKMP: SA life type in seconds
ISAKMP: SA life duration (VPI) of 0x0 0x20 0xC4 0x9B
ISAKMP (0:1): atts are acceptable.
IPSEC(validate_proposal_request): proposal part #1,
(key eng. msg.) INBOUND local= 172.18.124.159, remote= 172.18.124.96,
local_proxy= 172.18.124.159/255.255.255.255/0/0 (type=1),
remote_proxy= 14.1.1.106/255.255.255.255/0/0 (type=1),
protocol= ESP, transform= esp-aes 256 esp-md5-hmac ,
lifedur= 0s and 0kb,
spi= 0x0(0), conn_id= 0, keysize= 256, flags= 0x2
IPSEC(validate_proposal_request): proposal part #2,
(key eng. msg.) INBOUND local= 172.18.124.159, remote= 172.18.124.96,
local_proxy= 172.18.124.159/255.255.255.255/0/0 (type=1),
remote_proxy= 14.1.1.106/255.255.255.255/0/0 (type=1),
protocol= PCP, transform= comp-lzs ,
lifedur= 0s and 0kb,
spi= 0x0(0), conn_id= 0, keysize= 0, flags= 0x2
IPSEC(kei_proxy): head = clientmap, map->ivrf = , kei->ivrf =
IPSEC(validate_transform_proposal): transform proposal
    not supported for identity:
{esp-aes 256 esp-md5-hmac comp-lzs }
ISAKMP (0:1): IPsec policy invalidated proposal
ISAKMP (0:1): Checking IPsec proposal 2
ISAKMP: transform 1, ESP_AES
ISAKMP: attributes in transform:
ISAKMP: authenticator is HMAC-SHA
ISAKMP: encaps is 1
ISAKMP: key length is 256
ISAKMP: SA life type in seconds
ISAKMP: SA life duration (VPI) of 0x0 0x20 0xC4 0x9B
ISAKMP (0:1): atts are acceptable.
ISAKMP (0:1): Checking IPsec proposal 2
ISAKMP (0:1): transform 1, IPPCP LZS
ISAKMP: attributes in transform:
ISAKMP: encaps is 1
ISAKMP: SA life type in seconds
ISAKMP: SA life duration (VPI) of 0x0 0x20 0xC4 0x9B
ISAKMP (0:1): atts are acceptable.
IPSEC(validate_proposal_request): proposal part #1,
(key eng. msg.) INBOUND local= 172.18.124.159, remote= 172.18.124.96,
local_proxy= 172.18.124.159/255.255.255.255/0/0 (type=1),
remote_proxy= 14.1.1.106/255.255.255.255/0/0 (type=1),
protocol= ESP, transform= esp-aes 256 esp-sha-hmac ,
lifedur= 0s and 0kb,
spi= 0x0(0), conn_id= 0, keysize= 256, flags= 0x2
IPSEC(validate_proposal_request): proposal part #2,
(key eng. msg.) INBOUND local= 172.18.124.159, remote= 172.18.124.96,
local_proxy= 172.18.124.159/255.255.255.255/0/0 (type=1),
remote_proxy= 14.1.1.106/255.255.255.255/0/0 (type=1),
protocol= PCP, transform= comp-lzs ,
```

```
lifedur= 0s and 0kb,
spi= 0x0(0), conn_id= 0, keysize= 0, flags= 0x2
IPSEC(kei_proxy): head = clientmap, map->ivrf = , kei->ivrf =
IPSEC(validate_transform_proposal): transform proposal
    not supported for identity:
{esp-aes 256 esp-sha-hmac comp-lzs }
ISAKMP (0:1): IPsec policy invalidated proposal
ISAKMP (0:1): Checking IPsec proposal 3
ISAKMP: transform 1, ESP_AES
ISAKMP: attributes in transform:
ISAKMP: authenticator is HMAC-MD5
ISAKMP: encaps is 1
ISAKMP: key length is 128
ISAKMP: SA life type in seconds
ISAKMP: SA life duration (VPI) of 0x0 0x20 0xC4 0x9B
ISAKMP (0:1): atts are acceptable.
ISAKMP (0:1): Checking IPsec proposal 3
ISAKMP (0:1): transform 1, IPPCP LZS
ISAKMP: attributes in transform:
ISAKMP: encaps is 1
ISAKMP: SA life type in seconds
ISAKMP: SA life duration (VPI) of 0x0 0x20 0xC4 0x9B
ISAKMP (0:1): atts are acceptable.
IPSEC(validate_proposal_request): proposal part #1,
(key eng. msg.) INBOUND local= 172.18.124.159, remote= 172.18.124.96,
local_proxy= 172.18.124.159/255.255.255.255/0/0 (type=1),
remote_proxy= 14.1.1.106/255.255.255.255/0/0 (type=1),
protocol= ESP, transform= esp-aes esp-md5-hmac ,
lifedur= 0s and 0kb,
spi= 0x0(0), conn_id= 0, keysize= 128, flags= 0x2
IPSEC(validate_proposal_request): proposal part #2,
(key eng. msg.) INBOUND local= 172.18.124.159, remote= 172.18.124.96,
local_proxy= 172.18.124.159/255.255.255.255/0/0 (type=1),
remote_proxy= 14.1.1.106/255.255.255.255/0/0 (type=1),
protocol= PCP, transform= comp-lzs ,
lifedur= 0s and 0kb,
spi= 0x0(0), conn_id= 0, keysize= 0, flags= 0x2
IPSEC(kei_proxy): head = clientmap, map->ivrf = , kei->ivrf =
IPSEC(validate_transform_proposal): transform proposal
    not supported for identity:
{esp-aes esp-md5-hmac comp-lzs }
ISAKMP (0:1): IPsec policy invalidated proposal
ISAKMP (0:1): Checking IPsec proposal 4
ISAKMP: transform 1, ESP_AES
ISAKMP: attributes in transform:
ISAKMP: authenticator is HMAC-SHA
ISAKMP: encaps is 1
ISAKMP: key length is 128
ISAKMP: SA life type in seconds
ISAKMP: SA life duration (VPI) of 0x0 0x20 0xC4 0x9B
ISAKMP (0:1): atts are acceptable.
ISAKMP (0:1): Checking IPsec proposal 4
ISAKMP (0:1): transform 1, IPPCP LZS
ISAKMP: attributes in transform:
ISAKMP: encaps is 1
ISAKMP: SA life type in seconds
ISAKMP: SA life duration (VPI) of 0x0 0x20 0xC4 0x9B
ISAKMP (0:1): atts are acceptable.
IPSEC(validate_proposal_request): proposal part #1,
(key eng. msg.) INBOUND local= 172.18.124.159, remote= 172.18.124.96,
local_proxy= 172.18.124.159/255.255.255.255/0/0 (type=1),
remote_proxy= 14.1.1.106/255.255.255.255/0/0 (type=1),
protocol= ESP, transform= esp-aes esp-sha-hmac ,
lifedur= 0s and 0kb,
```

```
spi= 0x0(0), conn_id= 0, keysize= 128, flags= 0x2
IPSEC(validate_proposal_request): proposal part #2,
(key eng. msg.) INBOUND local= 172.18.124.159, remote= 172.18.124.96,
local_proxy= 172.18.124.159/255.255.255.255/0/0 (type=1),
remote_proxy= 14.1.1.106/255.255.255.255/0/0 (type=1),
protocol= PCP, transform= comp-lzs ,
lifedur= 0s and 0kb,
spi= 0x0(0), conn_id= 0, keysize= 0, flags= 0x2
IPSEC(kei_proxy): head = clientmap, map->ivrf = , kei->ivrf =
IPSEC(validate_transform_proposal): transform proposal
    not supported for identity:
{esp-aes esp-sha-hmac comp-lzs }
ISAKMP (0:1): IPsec policy invalidated proposal
ISAKMP (0:1): Checking IPsec proposal 5
ISAKMP: transform 1, ESP_AES
ISAKMP: attributes in transform:
ISAKMP: authenticator is HMAC-MD5
ISAKMP: encaps is 1
ISAKMP: key length is 256
ISAKMP: SA life type in seconds
ISAKMP: SA life duration (VPI) of 0x0 0x20 0xC4 0x9B
ISAKMP (0:1): atts are acceptable.
IPSEC(validate_proposal_request): proposal part #1,
(key eng. msg.) INBOUND local= 172.18.124.159, remote= 172.18.124.96,
local_proxy= 172.18.124.159/255.255.255.255/0/0 (type=1),
remote_proxy= 14.1.1.106/255.255.255.255/0/0 (type=1),
protocol= ESP, transform= esp-aes 256 esp-md5-hmac ,
lifedur= 0s and 0kb,
spi= 0x0(0), conn_id= 0, keysize= 256, flags= 0x2
IPSEC(kei_proxy): head = clientmap, map->ivrf = , kei->ivrf =
IPSEC(validate_transform_proposal): transform proposal
    not supported for identity:
{esp-aes 256 esp-md5-hmac }
ISAKMP (0:1): IPsec policy invalidated proposal
ISAKMP (0:1): Checking IPsec proposal 6
ISAKMP: transform 1, ESP_AES
ISAKMP: attributes in transform:
ISAKMP: authenticator is HMAC-SHA
ISAKMP: encaps is 1
ISAKMP: key length is 256
ISAKMP: SA life type in seconds
ISAKMP: SA life duration (VPI) of 0x0 0x20 0xC4 0x9B
ISAKMP (0:1): atts are acceptable.
IPSEC(validate_proposal_request): proposal part #1,
(key eng. msg.) INBOUND local= 172.18.124.159, remote= 172.18.124.96,
local_proxy= 172.18.124.159/255.255.255.255/0/0 (type=1),
remote_proxy= 14.1.1.106/255.255.255.255/0/0 (type=1),
protocol= ESP, transform= esp-aes 256 esp-sha-hmac ,
lifedur= 0s and 0kb,
spi= 0x0(0), conn_id= 0, keysize= 256, flags= 0x2
IPSEC(kei_proxy): head = clientmap, map->ivrf = , kei->ivrf =
IPSEC(validate_transform_proposal): transform proposal
    not supported for identity:
{esp-aes 256 esp-sha-hmac }
ISAKMP (0:1): IPsec policy invalidated proposal
ISAKMP (0:1): Checking IPsec proposal 7
ISAKMP: transform 1, ESP_AES
ISAKMP: attributes in transform:
ISAKMP: authenticator is HMAC-MD5
ISAKMP: encaps is 1
ISAKMP: key length is 128
ISAKMP: SA life type in seconds
ISAKMP: SA life duration (VPI) of 0x0 0x20 0xC4 0x9B
ISAKMP (0:1): atts are acceptable.
```

```
IPSEC(validate_proposal_request): proposal part #1,
(key eng. msg.) INBOUND local= 172.18.124.159, remote= 172.18.124.96,
local_proxy= 172.18.124.159/255.255.255.255/0/0 (type=1),
remote_proxy= 14.1.1.106/255.255.255.255/0/0 (type=1),
protocol= ESP, transform= esp-aes esp-md5-hmac ,
lifedur= 0s and 0kb,
spi= 0x0(0), conn_id= 0, keysize= 128, flags= 0x2
IPSEC(kei_proxy): head = clientmap, map->ivrf = , kei->ivrf =
IPSEC(validate_transform_proposal): transform proposal
    not supported for identity:
{esp-aes esp-md5-hmac }
ISAKMP (0:1): IPsec policy invalidated proposal
ISAKMP (0:1): Checking IPsec proposal 8
ISAKMP: transform 1, ESP_AES
ISAKMP: attributes in transform:
ISAKMP: authenticator is HMAC-SHA
ISAKMP: encaps is 1
ISAKMP: key length is 128
ISAKMP: SA life type in seconds
ISAKMP: SA life duration (VPI) of 0x0 0x20 0xC4 0x9B
ISAKMP (0:1): atts are acceptable.
IPSEC(validate_proposal_request): proposal part #1,
(key eng. msg.) INBOUND local= 172.18.124.159, remote= 172.18.124.96,
local_proxy= 172.18.124.159/255.255.255.255/0/0 (type=1),
remote_proxy= 14.1.1.106/255.255.255.255/0/0 (type=1),
protocol= ESP, transform= esp-aes esp-sha-hmac ,
lifedur= 0s and 0kb,
spi= 0x0(0), conn_id= 0, keysize= 128, flags= 0x2
IPSEC(kei_proxy): head = clientmap, map->ivrf = , kei->ivrf =
IPSEC(validate_transform_proposal): transform proposal
    not supported for identity:
{esp-aes esp-sha-hmac }
ISAKMP (0:1): IPsec policy invalidated proposal
ISAKMP (0:1): Checking IPsec proposal 9
ISAKMP: transform 1, ESP_3DES
ISAKMP: attributes in transform:
ISAKMP: authenticator is HMAC-MD5
ISAKMP: encaps is 1
ISAKMP: SA life type in seconds
ISAKMP: SA life duration (VPI) of 0x0 0x20 0xC4 0x9B
ISAKMP (0:1): atts are acceptable.
ISAKMP (0:1): Checking IPsec proposal 9
ISAKMP (0:1): transform 1, IPPCP LZS
ISAKMP: attributes in transform:
ISAKMP: encaps is 1
ISAKMP: SA life type in seconds
ISAKMP: SA life duration (VPI) of 0x0 0x20 0xC4 0x9B
ISAKMP (0:1): atts are acceptable.
IPSEC(validate_proposal_request): proposal part #1,
(key eng. msg.) INBOUND local= 172.18.124.159, remote= 172.18.124.96,
local_proxy= 172.18.124.159/255.255.255.255/0/0 (type=1),
remote_proxy= 14.1.1.106/255.255.255.255/0/0 (type=1),
protocol= ESP, transform= esp-3des esp-md5-hmac ,
lifedur= 0s and 0kb,
spi= 0x0(0), conn_id= 0, keysize= 0, flags= 0x2
IPSEC(validate_proposal_request): proposal part #2,
(key eng. msg.) INBOUND local= 172.18.124.159, remote= 172.18.124.96,
local_proxy= 172.18.124.159/255.255.255.255/0/0 (type=1),
remote_proxy= 14.1.1.106/255.255.255.255/0/0 (type=1),
protocol= PCP, transform= comp-lzs ,
lifedur= 0s and 0kb,
spi= 0x0(0), conn_id= 0, keysize= 0, flags= 0x2
IPSEC(kei_proxy): head = clientmap, map->ivrf = , kei->ivrf =
IPSEC(validate_transform_proposal): transform proposal
```



```
not supported for identity:
{esp-3des esp-md5-hmac comp-lzs }
ISAKMP (0:1): IPsec policy invalidated proposal
ISAKMP (0:1): Checking IPsec proposal 10
ISAKMP: transform 1, ESP_3DES
ISAKMP: attributes in transform:
ISAKMP: authenticator is HMAC-SHA
ISAKMP: encaps is 1
ISAKMP: SA life type in seconds
ISAKMP: SA life duration (VPI) of 0x0 0x20 0xC4 0x9B
ISAKMP (0:1): atts are acceptable.
ISAKMP (0:1): Checking IPsec proposal 10
ISAKMP (0:1): transform 1, IPPCP LZS
ISAKMP: attributes in transform:
ISAKMP: encaps is 1
ISAKMP: SA life type in seconds
ISAKMP: SA life duration (VPI) of 0x0 0x20 0xC4 0x9B
ISAKMP (0:1): atts are acceptable.
IPSEC(validate_proposal_request): proposal part #1,
(key eng. msg.) INBOUND local= 172.18.124.159, remote= 172.18.124.96,
local_proxy= 172.18.124.159/255.255.255.255/0/0 (type=1),
remote_proxy= 14.1.1.106/255.255.255.255/0/0 (type=1),
protocol= ESP, transform= esp-3des esp-sha-hmac ,
lifedur= 0s and 0kb,
spi= 0x0(0), conn_id= 0, keysize= 0, flags= 0x2
IPSEC(validate_proposal_request): proposal part #2,
(key eng. msg.) INBOUND local= 172.18.124.159, remote= 172.18.124.96,
local_proxy= 172.18.124.159/255.255.255.255/0/0 (type=1),
remote_proxy= 14.1.1.106/255.255.255.255/0/0 (type=1),
protocol= PCP, transform= comp-lzs ,
lifedur= 0s and 0kb,
spi= 0x0(0), conn_id= 0, keysize= 0, flags= 0x2
IPSEC(kei_proxy): head = clientmap, map->ivrf = , kei->ivrf =
IPSEC(validate_transform_proposal): transform proposal
not supported for identity:
{esp-3des esp-sha-hmac comp-lzs }
ISAKMP (0:1): IPsec policy invalidated proposal
ISAKMP (0:1): Checking IPsec proposal 11
ISAKMP: transform 1, ESP_3DES
ISAKMP: attributes in transform:
ISAKMP: authenticator is HMAC-MD5
ISAKMP: encaps is 1
ISAKMP: SA life type in seconds
ISAKMP: SA life duration (VPI) of 0x0 0x20 0xC4 0x9B
ISAKMP (0:1): atts are acceptable.
IPSEC(validate_proposal_request): proposal part #1,
(key eng. msg.) INBOUND local= 172.18.124.159, remote= 172.18.124.96,
local_proxy= 172.18.124.159/255.255.255.255/0/0 (type=1),
remote_proxy= 14.1.1.106/255.255.255.255/0/0 (type=1),
protocol= ESP, transform= esp-3des esp-md5-hmac ,
lifedur= 0s and 0kb,
spi= 0x0(0), conn_id= 0, keysize= 0, flags= 0x2
IPSEC(kei_proxy): head = clientmap, map->ivrf = , kei->ivrf =
ISAKMP (0:1): processing NONCE payload. message ID = -1836135476
ISAKMP (0:1): processing ID payload. message ID = -1836135476
ISAKMP (0:1): processing ID payload. message ID = -1836135476
ISAKMP (0:1): asking for 1 spis from ipsec
ISAKMP (0:1): Node -1836135476, Input = IKE_MSG_FROM_PEER,
IKE_QM_EXCH
ISAKMP (0:1): Old State = IKE_QM_READY
New State = IKE_QM_SPI_STARVE
ISAKMP (0:1): received packet from 172.18.124.96 dport 500
sport 500 Global (R) QM_IDLE
ISAKMP: set new node -1171731793 to QM_IDLE
```

```
ISAKMP (0:1): processing HASH payload. message ID = -1171731793
ISAKMP (0:1): processing SA payload. message ID = -1171731793
ISAKMP (0:1): Checking IPsec proposal 1
ISAKMP: transform 1, ESP_AES
ISAKMP: attributes in transform:
ISAKMP: authenticator is HMAC-MD5
ISAKMP: encaps is 1
ISAKMP: key length is 256
ISAKMP: SA life type in seconds
ISAKMP: SA life duration (VPI) of 0x0 0x20 0xC4 0x9B
ISAKMP (0:1): atts are acceptable.
ISAKMP (0:1): Checking IPsec proposal 1
ISAKMP (0:1): transform 1, IPPCP LZS
ISAKMP: attributes in transform:
ISAKMP: encaps is 1
ISAKMP: SA life type in seconds
ISAKMP: SA life duration (VPI) of 0x0 0x20 0xC4 0x9B
ISAKMP (0:1): atts are acceptable.
IPSEC(validate_proposal_request): proposal part #1,
(key eng. msg.) INBOUND local= 172.18.124.159, remote= 172.18.124.96,
local_proxy= 0.0.0.0/0.0.0.0/0/0 (type=4),
remote_proxy= 14.1.1.106/255.255.255.255/0/0 (type=1),
protocol= ESP, transform= esp-aes 256 esp-md5-hmac ,
lifedur= 0s and 0kb,
spi= 0x0(0), conn_id= 0, keysize= 256, flags= 0x2
IPSEC(validate_proposal_request): proposal part #2,
(key eng. msg.) INBOUND local= 172.18.124.159, remote= 172.18.124.96,
local_proxy= 0.0.0.0/0.0.0.0/0/0 (type=4),
remote_proxy= 14.1.1.106/255.255.255.255/0/0 (type=1),
protocol= PCP, transform= comp-lzs ,
lifedur= 0s and 0kb,
spi= 0x0(0), conn_id= 0, keysize= 0, flags= 0x2
IPSEC(kei_proxy): head = clientmap, map->ivrf = , kei->ivrf =
IPSEC(validate_transform_proposal): transform proposal
    not supported for identity:
{esp-aes 256 esp-md5-hmac comp-lzs }
ISAKMP (0:1): IPsec policy invalidated proposal
ISAKMP (0:1): Checking IPsec proposal 2
ISAKMP: transform 1, ESP_AES
ISAKMP: attributes in transform:
ISAKMP: authenticator is HMAC-SHA
ISAKMP: encaps is 1
ISAKMP: key length is 256
ISAKMP: SA life type in seconds
ISAKMP: SA life duration (VPI) of 0x0 0x20 0xC4 0x9B
ISAKMP (0:1): atts are acceptable.
ISAKMP (0:1): Checking IPsec proposal 2
ISAKMP (0:1): transform 1, IPPCP LZS
ISAKMP: attributes in transform:
ISAKMP: encaps is 1
ISAKMP: SA life type in seconds
ISAKMP: SA life duration (VPI) of 0x0 0x20 0xC4 0x9B
ISAKMP (0:1): atts are acceptable.
IPSEC(validate_proposal_request): proposal part #1,
(key eng. msg.) INBOUND local= 172.18.124.159, remote= 172.18.124.96,
local_proxy= 0.0.0.0/0.0.0.0/0/0 (type=4),
remote_proxy= 14.1.1.106/255.255.255.255/0/0 (type=1),
protocol= ESP, transform= esp-aes 256 esp-sha-hmac ,
lifedur= 0s and 0kb,
spi= 0x0(0), conn_id= 0, keysize= 256, flags= 0x2
IPSEC(validate_proposal_request): proposal part #2,
(key eng. msg.) INBOUND local= 172.18.124.159, remote= 172.18.124.96,
local_proxy= 0.0.0.0/0.0.0.0/0/0 (type=4),
remote_proxy= 14.1.1.106/255.255.255.255/0/0 (type=1),
```

```
protocol= PCP, transform= comp-lzs ,
lifedur= 0s and 0kb,
spi= 0x0(0), conn_id= 0, keysize= 0, flags= 0x2
IPSEC(kei_proxy): head = clientmap, map->ivrf = , kei->ivrf =
IPSEC(validate_transform_proposal): transform proposal
    not supported for identity:
{esp-aes 256 esp-sha-hmac comp-lzs }
ISAKMP (0:1): IPsec policy invalidated proposal
ISAKMP (0:1): Checking IPsec proposal 3
ISAKMP: transform 1, ESP_AES
ISAKMP: attributes in transform:
ISAKMP: authenticator is HMAC-MD5
ISAKMP: encaps is 1
ISAKMP: key length is 128
ISAKMP: SA life type in seconds
ISAKMP: SA life duration (VPI) of 0x0 0x20 0xC4 0x9B
ISAKMP (0:1): atts are acceptable.
ISAKMP (0:1): Checking IPsec proposal 3
ISAKMP (0:1): transform 1, IPPCP LZS
ISAKMP: attributes in transform:
ISAKMP: encaps is 1
ISAKMP: SA life type in seconds
ISAKMP: SA life duration (VPI) of 0x0 0x20 0xC4 0x9B
ISAKMP (0:1): atts are acceptable.
IPSEC(validate_proposal_request): proposal part #1,
(key eng. msg.) INBOUND local= 172.18.124.159, remote= 172.18.124.96,
local_proxy= 0.0.0.0/0.0.0.0/0/0 (type=4),
remote_proxy= 14.1.1.106/255.255.255.255/0/0 (type=1),
protocol= ESP, transform= esp-aes esp-md5-hmac ,
lifedur= 0s and 0kb,
spi= 0x0(0), conn_id= 0, keysize= 128, flags= 0x2
IPSEC(validate_proposal_request): proposal part #2,
(key eng. msg.) INBOUND local= 172.18.124.159, remote= 172.18.124.96,
local_proxy= 0.0.0.0/0.0.0.0/0/0 (type=4),
remote_proxy= 14.1.1.106/255.255.255.255/0/0 (type=1),
protocol= PCP, transform= comp-lzs ,
lifedur= 0s and 0kb,
spi= 0x0(0), conn_id= 0, keysize= 0, flags= 0x2
IPSEC(kei_proxy): head = clientmap, map->ivrf = , kei->ivrf =
IPSEC(validate_transform_proposal): transform proposal
    not supported for identity:
{esp-aes esp-md5-hmac comp-lzs }
ISAKMP (0:1): IPsec policy invalidated proposal
ISAKMP (0:1): Checking IPsec proposal 4
ISAKMP: transform 1, ESP_AES
ISAKMP: attributes in transform:
ISAKMP: authenticator is HMAC-SHA
ISAKMP: encaps is 1
ISAKMP: key length is 128
ISAKMP: SA life type in seconds
ISAKMP: SA life duration (VPI) of 0x0 0x20 0xC4 0x9B
ISAKMP (0:1): atts are acceptable.
ISAKMP (0:1): Checking IPsec proposal 4
ISAKMP (0:1): transform 1, IPPCP LZS
ISAKMP: attributes in transform:
ISAKMP: encaps is 1
ISAKMP: SA life type in seconds
ISAKMP: SA life duration (VPI) of 0x0 0x20 0xC4 0x9B
ISAKMP (0:1): atts are acceptable.
IPSEC(validate_proposal_request): proposal part #1,
(key eng. msg.) INBOUND local= 172.18.124.159, remote= 172.18.124.96,
local_proxy= 0.0.0.0/0.0.0.0/0/0 (type=4),
remote_proxy= 14.1.1.106/255.255.255.255/0/0 (type=1),
protocol= ESP, transform= esp-aes esp-sha-hmac ,
```

```
lifedur= 0s and 0kb,
spi= 0x0(0), conn_id= 0, keysize= 128, flags= 0x2
IPSEC(validate_proposal_request): proposal part #2,
(key eng. msg.) INBOUND local= 172.18.124.159, remote= 172.18.124.96,
local_proxy= 0.0.0.0/0.0.0.0/0/0 (type=4),
remote_proxy= 14.1.1.106/255.255.255.255/0/0 (type=1),
protocol= PCP, transform= comp-lzs ,
lifedur= 0s and 0kb,
spi= 0x0(0), conn_id= 0, keysize= 0, flags= 0x2
IPSEC(kei_proxy): head = clientmap, map->ivrf = , kei->ivrf =
IPSEC(validate_transform_proposal): transform proposal
    not supported for identity:
{esp-aes esp-sha-hmac comp-lzs }
ISAKMP (0:1): IPsec policy invalidated proposal
ISAKMP (0:1): Checking IPsec proposal 5
ISAKMP: transform 1, ESP_AES
ISAKMP: attributes in transform:
ISAKMP: authenticator is HMAC-MD5
ISAKMP: encaps is 1
ISAKMP: key length is 256
ISAKMP: SA life type in seconds
ISAKMP: SA life duration (VPI) of 0x0 0x20 0xC4 0x9B
ISAKMP (0:1): processing ID payload. message ID = -1171731793
ISAKMP (0:1): processing ID payload. message ID = -1171731793
ISAKMP (0:1): asking for 1 spis from ipsec
ISAKMP (0:1): Node -1171731793, Input = IKE_MSG_FROM_PEER,
    IKE_QM_EXCH
ISAKMP (0:1): Old State = IKE_QM_READY
    New State = IKE_QM_SPI_STARVE
IPSEC(key_engine): got a queue event...
IPSEC(spi_response): getting spi 3756150268 for SA
from 172.18.124.159 to 172.18.124.96 for prot 3
IPSEC(key_engine): got a queue event...
IPSEC(spi_response): getting spi 2229862856 for SA
from 172.18.124.159 to 172.18.124.96 for prot 3
ISAKMP: received ke message (2/1)
ISAKMP: received ke message (2/1)
ISAKMP (0:1): sending packet to 172.18.124.96 my_port 500
    peer_port 500 (R) QM_IDLE
ISAKMP (0:1): Node -1836135476, Input = IKE_MSG_FROM_IPSEC,
    IKE_SPI_REPLY
ISAKMP (0:1): Old State = IKE_QM_SPI_STARVE
    New State = IKE_QM_R_QM2
ISAKMP (0:1): received packet from 172.18.124.96 dport 500
    sport 500 Global (R) QM_IDLE
ISAKMP: Locking peer struct 0x63B2EAE4,
    IPSEC refcount 1 for for stuff_ke
ISAKMP (0:1): Creating IPsec SAs
inbound SA from 172.18.124.96 to 172.18.124.159 (f/i) 0/ 0
(proxy 14.1.1.106 to 172.18.124.159)
has spi 0xDFE24DFC and conn_id 2000 and flags 2
lifetime of 2147483 seconds
has client flags 0x0
ISAKMP (0:1): Old State = IKE_QM_SPI_STARVE
    New State = IKE_QM_R_QM2
ISAKMP (0:1): received packet from 172.18.124.96 dport 500
    sport 500 Global (R) QM_IDLE
ISAKMP: Locking peer struct 0x63B2EAE4,
    IPSEC refcount 2 for for stuff_ke
ISAKMP (0:1): Creating IPsec SAs
inbound SA from 172.18.124.96 to 172.18.124.159 (f/i) 0/ 0
(proxy 14.1.1.106 to 0.0.0.0)
has spi 0x84E901C8 and conn_id 2002 and flags 2
lifetime of 2147483 seconds
```

```
has client flags 0x0
outbound SA from 172.18.124.159 to 172.18.124.96 (f/i) 0/ 0
  (proxy 0.0.0.0 to 14.1.1.106 )
has spi -802758470 and conn_id 2003 and flags A
IPSEC(add mtree): src 0.0.0.0, dest 14.1.1.106, dest_port 0
IPSEC(create_sa): sa created,
(sa) sa_dest= 172.18.124.159, sa_prot= 50,
sa_spi= 0x84E901C8(2229862856),
sa_trans= esp-3des esp-md5-hmac , sa_conn_id= 2002
IPSEC(create_sa): sa created,
(sa) sa_dest= 172.18.124.96, sa_prot= 50,
sa_spi= 0xD026E0BA(3492208826),
sa_trans= esp-3des esp-md5-hmac , sa_conn_id= 2003
ISAKMP (0:1): received packet from 172.18.124.96 dport 500
  sport 500 Global (R) QM_IDLE
ISAKMP: set new node 839140381 to QM_IDLE
ISAKMP (0:1): processing HASH payload. message ID = 839140381
ISAKMP (0:1): processing NOTIFY R_U_THERE protocol 1
spi 0, message ID = 839140381, sa = 63972310
ISAKMP (0:1): deleting node 839140381 error FALSE
  reason "informational (in) state 1"
ISAKMP (0:1): Input = IKE_MSG_FROM_PEER, IKE_INFO_NOTIFY
ISAKMP (0:1): Old State = IKE_P1_COMPLETE
  New State = IKE_P1_COMPLETE
ISAKMP (0:1): DPD/R_U_THERE received from peer 172.18.124.96,
  sequence 0xA5A4632A
ISAKMP: set new node 760238809 to QM_IDLE
ISAKMP (0:1): sending packet to 172.18.124.96 my_port 500
  peer_port 500 (R) QM_IDLE
ISAKMP (0:1): purging node 760238809
ISAKMP (0:1): Input = IKE_MSG_FROM_PEER,
  IKE_MSG_KEEP_ALIVE
ISAKMP (0:1): Old State = IKE_P1_COMPLETE
  New State = IKE_P1_COMPLETE
ISAKMP (0:1): purging node 188739171
ISAKMP (0:1): purging node -1836135476
ISAKMP (0:1): purging node -1171731793
3640#
```

## クライアント ログ

ログを表示するには、VPN クライアントで LogViewer を起動し、設定されたすべてのクラスについてフィルタが High に設定されていることを確認します。次にログ出力の例を示します。

```
3640#debug crypto ipsec
Crypto IPSEC debugging is on
3640#debug crypto isakmp
Crypto ISAKMP debugging is on
3640#

ISAKMP (0:0): received packet from 172.18.124.96
  dport 500 sport 500 Global (N) NEW SA
ISAKMP: Found a peer struct for 172.18.124.96, peer port 500
ISAKMP: Locking peer struct 0x63B2EAE4, IKE refcount 1 for
  crypto_ikmp_config_initialize_sa
ISAKMP (0:0): (Re)Setting client xauth list and state
ISAKMP: local port 500, remote port 500
ISAKMP: insert sa successfully sa = 63972310
ISAKMP (0:1): processing SA payload. message ID = 0
ISAKMP (0:1): processing ID payload. message ID = 0
ISAKMP (0:1): peer matches *none* of the profiles
ISAKMP (0:1): processing vendor id payload
```

ISAKMP (0:1): vendor ID seems Unity/DPD but major 215 mismatch  
ISAKMP (0:1): vendor ID is XAUTH  
ISAKMP (0:1): processing vendor id payload  
ISAKMP (0:1): vendor ID is DPD  
ISAKMP (0:1): processing vendor id payload  
ISAKMP (0:1): vendor ID seems Unity/DPD but major 123 mismatch  
ISAKMP (0:1): vendor ID is NAT-T v2  
ISAKMP (0:1): processing vendor id payload  
ISAKMP (0:1): vendor ID seems Unity/DPD but major 194 mismatch  
ISAKMP (0:1): processing vendor id payload  
ISAKMP (0:1): vendor ID is Unity  
ISAKMP (0:1) Authentication by xauth preshared  
ISAKMP (0:1): Checking ISAKMP transform 1 against priority 1 policy  
ISAKMP: encryption AES-CBC  
ISAKMP: hash SHA  
ISAKMP: default group 2  
ISAKMP: auth XAUTHInitPreShared  
ISAKMP: life type in seconds  
ISAKMP: life duration (VPI) of 0x0 0x20 0xC4 0x9B  
ISAKMP: keylength of 256  
ISAKMP (0:1): Encryption algorithm offered does not match policy!  
ISAKMP (0:1): atts are not acceptable. Next payload is 3  
ISAKMP (0:1): Checking ISAKMP transform 2 against priority 1 policy  
ISAKMP: encryption AES-CBC  
ISAKMP: hash MD5  
ISAKMP: default group 2  
ISAKMP: auth XAUTHInitPreShared  
ISAKMP: life type in seconds  
ISAKMP: life duration (VPI) of 0x0 0x20 0xC4 0x9B  
ISAKMP: keylength of 256  
ISAKMP (0:1): Encryption algorithm offered does not match policy!  
ISAKMP (0:1): atts are not acceptable. Next payload is 3  
ISAKMP (0:1): Checking ISAKMP transform 3 against priority 1 policy  
ISAKMP: encryption AES-CBC  
ISAKMP: hash SHA  
ISAKMP: default group 2  
ISAKMP: auth pre-share  
ISAKMP: life type in seconds  
ISAKMP: life duration (VPI) of 0x0 0x20 0xC4 0x9B  
ISAKMP: keylength of 256  
ISAKMP (0:1): Encryption algorithm offered does not match policy!  
ISAKMP (0:1): atts are not acceptable. Next payload is 3  
ISAKMP (0:1): Checking ISAKMP transform 4 against priority 1 policy  
ISAKMP: encryption AES-CBC  
ISAKMP: hash MD5  
ISAKMP: default group 2  
ISAKMP: auth pre-share  
ISAKMP: life type in seconds  
ISAKMP: life duration (VPI) of 0x0 0x20 0xC4 0x9B  
ISAKMP: keylength of 256  
ISAKMP (0:1): Encryh of 128  
ISAKMP (0:1): Encryption algorithm offered does not match policy!  
ISAKMP (0:1): atts are not acceptable. Next payload is 3  
ISAKMP (0:1): Checking ISAKMP transform 7 against priority 1 policy  
ISAKMP: encryption AES-CBC  
ISAKMP: hash SHA  
ISAKMP: default group 2  
ISAKMP: auth pre-share  
ISAKMP: life type in seconds  
ISAKMP: life duration (VPI) of 0x0 0x20 0xC4 0x9B  
ISAKMP: keylength of 128  
ISAKMP (0:1): Encryption algorithm offered does not match policy!  
ISAKMP (0:1): atts are not acceptable. Next payload is 3  
ISAKMP (0:1): Checking ISAKMP transform 8 against priority 1 policy

ISAKMP: encryption AES-CBC  
ISAKMP: hash MD5  
ISAKMP: default group 2  
ISAKMP: auth pre-share  
ISAKMP: life type in seconds  
ISAKMP: life duration (VPI) of 0x0 0x20 0xC4 0x9B  
ISAKMP: keylength of 128  
ISAKMP (0:1): Encryption algorithm offered does not match policy!  
ISAKMP (0:1): atts are not acceptable. Next payload is 3  
ISAKMP (0:1): Checking ISAKMP transform 9 against priority 1 policy  
ISAKMP: encryption 3DES-CBC  
ISAKMP: hash SHA match policy!  
ISAKMP (0:1): atts are not acceptable. Next payload is 3  
ISAKMP (0:1): Checking ISAKMP transform 5 against priority 1 policy  
ISAKMP: encryption AES-CBC  
ISAKMP: hash SHA  
ISAKMP: default group 2  
ISAKMP: auth XAUTHInitPreShared  
ISAKMP: life type in seconds  
ISAKMP: life duration (VPI) of 0x0 0x20 0xC4 0x9B  
ISAKMP: keylength of 128  
ISAKMP (0:1): Encryption algorithm offered does not match policy!  
ISAKMP (0:1): atts are not acceptable. Next payload is 3  
ISAKMP (0:1): Checking ISAKMP transform 6 against priority 1 policy  
ISAKMP: encryption AES-CBC  
ISAKMP: hash MD5  
ISAKMP: default group 2  
ISAKMP: auth XAUTHInitPreShared  
ISAKMP: life type in seconds  
ISAKMP: life duration (VPI) of 0x0 0x20 0xC4 0x9B  
ISAKMP: keylength  
ISAKMP: default group 2  
ISAKMP: auth XAUTHInitPreShared  
ISAKMP: life type in seconds  
ISAKMP: life duration (VPI) of 0x0 0x20 0xC4 0x9B  
ISAKMP (0:1): Encryption algorithm offered does not match policy!  
ISAKMP (0:1): atts are not acceptable. Next payload is 3  
ISAKMP (0:1): Checking ISAKMP transform 10 against priority 1 policy  
ISAKMP: encryption 3DES-CBC  
ISAKMP: hash MD5  
ISAKMP: default group 2  
ISAKMP: auth XAUTHInitPreShared  
ISAKMP: life type in seconds  
ISAKMP: life duration (VPI) of 0x0 0x20 0xC4 0x9B  
ISAKMP (0:1): Encryption algorithm offered does not match policy!  
ISAKMP (0:1): atts are not acceptable. Next payload is 3  
ISAKMP (0:1): Checking ISAKMP transform 11 against priority 1 policy  
ISAKMP: encryption 3DES-CBC  
ISAKMP: hash SHA  
ISAKMP: default group 2  
ISAKMP: auth pre-share  
ISAKMP: life type in seconds  
ISAKMP: life duration (VPI) of 0x0 0x20 0xC4 0x9B  
ISAKMP (0:1): Encryption algorithm offered does not match policy!  
ISAKMP (0:1): atts are not acceptable. Next payload is 3  
ISAKMP (0:1): Checking ISAKMP transform 12 against priority 1 policy  
ISAKMP: encryption 3DES-CBC  
ISAKMP: hash MD5  
ISAKMP: default group 2  
ISAKMP: auth pre-share  
ISAKMP: life type in seconds  
ISAKMP: life duration (VPI) of 0x0 0x20 0xC4 0x9B  
ISAKMP (0:1): Encryption algorithm offered does not match policy!  
ISAKMP (0:1): atts are not acceptable. Next payload is 3



ISAKMP (0:1): Checking ISAKMP transform 13 against priority 1 policy  
ISAKMP: encryption DES-CBC  
ISAKMP: hash MD5  
ISAKMP: default group 2  
ISAKMP: auth XAUTHInitPreShared  
ISAKMP: life type in seconds  
ISAKMP: life duration (VPI) of 0x0 0x20 0xC4 0x9B  
**ISAKMP (0:1): atts are acceptable. Next payload is 3**  
ISAKMP (0:1): processing KE payload. message ID = 0  
ISAKMP (0:1): processing NONCE payload. message ID = 0  
ISAKMP (0:1): vendor ID is NAT-T v2  
ISAKMP (0:1): Input = IKE\_MSG\_FROM\_PEER, IKE\_AM\_EXCH  
ISAKMP (0:1): Old State = IKE\_READY New State = IKE\_R\_AM\_AAA\_AWAIT  
ISAKMP: got callback 1  
ISAKMP (0:1): SKEYID state generated  
ISAKMP (0:1): constructed NAT-T vendor-02 ID  
ISAKMP (0:1): SA is doing pre-shared key authentication  
    plus XAUTH using id type ID\_IPV4\_ADDR  
ISAKMP (1): ID payload  
next-payload : 10  
type : 1  
addr : 172.18.124.159  
protocol : 17  
port : 0  
length : 8  
ISAKMP (1): Total payload length: 12  
ISAKMP (0:1): constructed HIS NAT-D  
ISAKMP (0:1): constructed MINE NAT-D  
ISAKMP (0:1): sending packet to 172.18.124.96 my\_port 500  
    peer\_port 500 (R) AG\_INIT\_EXCH  
ISAKMP (0:1): Input = IKE\_MSG\_FROM\_AAA, PRESHARED\_KEY\_REPLY  
ISAKMP (0:1): Old State = IKE\_R\_AM\_AAA\_AWAIT New State = IKE\_R\_AM2  
ISAKMP (0:1): received packet from 172.18.124.96 dport 500  
    sport 500 Global (R) AG\_INIT\_EXCH  
ISAKMP (0:1): processing HASH payload. message ID = 0  
ISAKMP (0:1): processing NOTIFY INITIAL\_CONTACT protocol 1  
spi 0, message ID = 0, sa = 63972310  
ISAKMP (0:1): Process initial contact,  
bring down existing phase 1 and 2 SA's with local 172.18.124.159  
    remote 172.18.124.96 remote port 500  
ISAKMP (0:1): returning IP addr to the address pool: 14.1.1.105  
ISAKMP (0:1): returning address 14.1.1.105 to pool  
ISAKMP:received payload type 17  
ISAKMP (0:1): Detected NAT-D payload  
ISAKMP (0:1): recalc my hash for NAT-D  
ISAKMP (0:1): NAT match MINE hash  
ISAKMP:received payload type 17  
ISAKMP (0:1): Detected NAT-D payload  
ISAKMP (0:1): recalc his hash for NAT-D  
ISAKMP (0:1): NAT match HIS hash  
ISAKMP (0:1): SA has been authenticated with 172.18.124.96  
ISAKMP: set new node 1397605141 to CONF\_XAUTH  
ISAKMP (0:1): sending packet to 172.18.124.96  
    my\_port 500 peer\_port 500 (R) QM\_IDLE  
ISAKMP (0:1): purging node 1397605141  
ISAKMP: Sending phase 1 responder lifetime 86400  
ISAKMP (0:1): peer matches \*none\* of the profiles  
ISAKMP (0:1): Input = IKE\_MSG\_FROM\_PEER, IKE\_AM\_EXCH  
ISAKMP (0:1): Old State = IKE\_R\_AM2 New State = IKE\_P1\_COMPLETE  
IPSEC(key\_engine): got a queue event...  
ISAKMP (0:1): Need XAUTH  
ISAKMP (0:1): Input = IKE\_MSG\_INTERNAL, IKE\_PHASE1\_COMPLETE  
ISAKMP (0:1): Old State = IKE\_P1\_COMPLETE  
    New State = IKE\_XAUTH\_AAA\_START\_LOGIN\_AWAIT

ISAKMP: got callback 1  
ISAKMP: set new node 1446280258 to CONF\_XAUTH  
ISAKMP/xauth: request attribute XAUTH\_USER\_NAME\_V2  
ISAKMP/xauth: request attribute XAUTH\_USER\_PASSWORD\_V2  
ISAKMP (0:1): initiating peer config to 172.18.124.96. ID = 1446280258  
ISAKMP (0:1): sending packet to 172.18.124.96  
    my\_port 500 peer\_port 500 (R) CONF\_XAUTH  
ISAKMP (0:1): Input = IKE\_MSG\_FROM\_AAA, IKE\_AAA\_START\_LOGIN  
ISAKMP (0:1): Old State = IKE\_XAUTH\_AAA\_START\_LOGIN\_AWAIT  
    New State = IKE\_XAUTH\_REQ\_SENT  
ISAKMP (0:1): received packet from 172.18.124.96 dport 500  
    sport 500 Global (R) CONF\_XAUTH  
ISAKMP (0:1): processing transaction payload from 172.18.124.96.  
    message ID = 1446280258  
ISAKMP: Config payload REPLY  
ISAKMP/xauth: reply attribute XAUTH\_USER\_NAME\_V2  
ISAKMP/xauth: reply attribute XAUTH\_USER\_PASSWORD\_V2  
ISAKMP (0:1): deleting node 1446280258 error FALSE  
    reason "done with xauth request/reply exchange"  
ISAKMP (0:1): Input = IKE\_MSG\_FROM\_PEER, IKE\_CFG\_REPLY  
ISAKMP (0:1): Old State = IKE\_XAUTH\_REQ\_SENT  
    New State = IKE\_XAUTH\_AAA\_CONT\_LOGIN\_AWAIT  
ISAKMP: got callback 1  
ISAKMP: set new node 117774567 to CONF\_XAUTH  
ISAKMP (0:1): initiating peer config to 172.18.124.96.  
    ID = 117774567  
ISAKMP (0:1): sending packet to 172.18.124.96 my\_port 500  
    peer\_port 500 (R) CONF\_XAUTH  
ISAKMP (0:1): Input = IKE\_MSG\_FROM\_AAA, IKE\_AAA\_CONT\_LOGIN  
ISAKMP (0:1): Old State = IKE\_XAUTH\_AAA\_CONT\_LOGIN\_AWAIT  
    New State = IKE\_XAUTH\_SET\_SENT  
ISAKMP (0:1): received packet from 172.18.124.96 dport 500  
    sport 500 Global (R) CONF\_XAUTH  
ISAKMP (0:1): processing transaction payload from 172.18.124.96.  
    message ID = 117774567  
ISAKMP: Config payload ACK  
ISAKMP (0:1): XAUTH ACK Processed  
ISAKMP (0:1): deleting node 117774567 error FALSE  
    reason "done with transaction"  
ISAKMP (0:1): Input = IKE\_MSG\_FROM\_PEER, IKE\_CFG\_ACK  
ISAKMP (0:1): Old State = IKE\_XAUTH\_SET\_SENT  
    New State = IKE\_P1\_COMPLETE  
ISAKMP (0:1): Input = IKE\_MSG\_INTERNAL, IKE\_PHASE1\_COMPLETE  
ISAKMP (0:1): Old State = IKE\_P1\_COMPLETE  
    New State = IKE\_P1\_COMPLETE  
ISAKMP (0:1): received packet from 172.18.124.96 dport 500  
    sport 500 Global (R) QM\_IDLE  
ISAKMP: set new node 188739171 to QM\_IDLE  
ISAKMP (0:1): processing transaction payload from 172.18.124.96.  
    message ID = 188739171  
ISAKMP: Config payload REQUEST  
ISAKMP (0:1): checking request:  
ISAKMP: IP4\_ADDRESS  
ISAKMP: IP4\_NETMASK  
ISAKMP: IP4\_DNS  
ISAKMP: IP4\_NBNS  
ISAKMP: ADDRESS\_EXPIRY  
ISAKMP: APPLICATION\_VERSION  
ISAKMP: UNKNOWN Unknown Attr: 0x7000  
ISAKMP: UNKNOWN Unknown Attr: 0x7001  
ISAKMP: DEFAULT\_DOMAIN  
ISAKMP: SPLIT\_INCLUDE  
ISAKMP: UNKNOWN Unknown Attr: 0x7003  
ISAKMP: UNKNOWN Unknown Attr: 0x7007

ISAKMP: UNKNOWN Unknown Attr: 0x7008  
ISAKMP: UNKNOWN Unknown Attr: 0x7009  
ISAKMP: UNKNOWN Unknown Attr: 0x700A  
ISAKMP: UNKNOWN Unknown Attr: 0x7005  
ISAKMP (0:1): Input = IKE\_MSG\_FROM\_PEER, IKE\_CFG\_REQUEST  
ISAKMP (0:1): Old State = IKE\_P1\_COMPLETE  
New State = IKE\_CONFIG\_AUTHOR\_AAA\_AWAIT  
ISAKMP: got callback 1  
ISAKMP (0:1): attributes sent in message:  
Address: 0.2.0.0  
ISAKMP (0:1): allocating address 14.1.1.106  
ISAKMP: Sending private address: 14.1.1.106  
ISAKMP: Sending IP4\_DNS server address: 14.1.1.10  
ISAKMP: Sending IP4\_NBNS server address: 14.1.1.20  
ISAKMP: Sending ADDRESS\_EXPIRY seconds left to  
use the address: 86396  
ISAKMP: Sending APPLICATION\_VERSION string: Cisco  
Internetwork Operating System Software  
IOS (tm) 3600 Software (C3640-JK9O3S-M), Version 12.2(15)T2,  
RELEASE SOFTWARE (fc2)  
TAC Support: <http://www.cisco.com/tac>  
Copyright (c) 1986-2003 by cisco Systems, Inc.  
Compiled Wed 30-Apr-03 05:42 by nmasa  
ISAKMP (0/1): Unknown Attr: UNKNOWN (0x7000)  
ISAKMP (0/1): Unknown Attr: UNKNOWN (0x7001)  
ISAKMP: Sending DEFAULT\_DOMAIN default domain name: cisco.com  
ISAKMP (0/1): Unknown Attr: UNKNOWN (0x7003)  
ISAKMP (0/1): Unknown Attr: UNKNOWN (0x7007)  
ISAKMP (0/1): Unknown Attr: UNKNOWN (0x7008)  
ISAKMP (0/1): Unknown Attr: UNKNOWN (0x7009)  
ISAKMP (0/1): Unknown Attr: UNKNOWN (0x700A)  
ISAKMP (0/1): Unknown Attr: UNKNOWN (0x7005)  
ISAKMP (0:1): responding to peer config from 172.18.124.96.  
ID = 188739171  
ISAKMP (0:1): sending packet to 172.18.124.96 my\_port 500  
peer\_port 500 (R) CONF\_ADDR  
ISAKMP (0:1): deleting node 188739171 error FALSE reason ""  
ISAKMP (0:1): Input = IKE\_MSG\_FROM\_AAA, IKE\_AAA\_GROUP\_ATTR  
ISAKMP (0:1): Old State = IKE\_CONFIG\_AUTHOR\_AAA\_AWAIT  
New State = IKE\_P1\_COMPLETE  
ISAKMP (0:1): received packet from 172.18.124.96 dport 500  
sport 500 Global (R) QM\_IDLE  
ISAKMP: set new node -1836135476 to QM\_IDLE  
ISAKMP (0:1): processing HASH payload. message ID = -1836135476  
ISAKMP (0:1): processing SA payload. message ID = -1836135476  
ISAKMP (0:1): Checking IPsec proposal 1  
ISAKMP: transform 1, ESP\_AES  
ISAKMP: attributes in transform:  
ISAKMP: authenticator is HMAC-MD5  
ISAKMP: encaps is 1  
ISAKMP: key length is 256  
ISAKMP: SA life type in seconds  
ISAKMP: SA life duration (VPI) of 0x0 0x20 0xC4 0x9B  
ISAKMP (0:1): atts are acceptable.  
ISAKMP (0:1): Checking IPsec proposal 1  
ISAKMP (0:1): transform 1, IPPCP LZS  
ISAKMP: attributes in transform:  
ISAKMP: encaps is 1  
ISAKMP: SA life type in seconds  
ISAKMP: SA life duration (VPI) of 0x0 0x20 0xC4 0x9B  
ISAKMP (0:1): atts are acceptable.  
IPSEC(validate\_proposal\_request): proposal part #1,  
(key eng. msg.) INBOUND local= 172.18.124.159, remote= 172.18.124.96,  
local\_proxy= 172.18.124.159/255.255.255.255/0/0 (type=1),

```
remote_proxy= 14.1.1.106/255.255.255.255/0/0 (type=1),
protocol= ESP, transform= esp-aes 256 esp-md5-hmac ,
lifedur= 0s and 0kb,
spi= 0x0(0), conn_id= 0, keysize= 256, flags= 0x2
IPSEC(validate_proposal_request): proposal part #2,
(key eng. msg.) INBOUND local= 172.18.124.159, remote= 172.18.124.96,
local_proxy= 172.18.124.159/255.255.255.255/0/0 (type=1),
remote_proxy= 14.1.1.106/255.255.255.255/0/0 (type=1),
protocol= PCP, transform= comp-lzs ,
lifedur= 0s and 0kb,
spi= 0x0(0), conn_id= 0, keysize= 0, flags= 0x2
IPSEC(kei_proxy): head = clientmap, map->ivrf = , kei->ivrf =
IPSEC(validate_transform_proposal): transform proposal
    not supported for identity:
{esp-aes 256 esp-md5-hmac comp-lzs }
ISAKMP (0:1): IPsec policy invalidated proposal
ISAKMP (0:1): Checking IPsec proposal 2
ISAKMP: transform 1, ESP_AES
ISAKMP: attributes in transform:
ISAKMP: authenticator is HMAC-SHA
ISAKMP: encaps is 1
ISAKMP: key length is 256
ISAKMP: SA life type in seconds
ISAKMP: SA life duration (VPI) of 0x0 0x20 0xC4 0x9B
ISAKMP (0:1): atts are acceptable.
ISAKMP (0:1): Checking IPsec proposal 2
ISAKMP (0:1): transform 1, IPPCP LZS
ISAKMP: attributes in transform:
ISAKMP: encaps is 1
ISAKMP: SA life type in seconds
ISAKMP: SA life duration (VPI) of 0x0 0x20 0xC4 0x9B
ISAKMP (0:1): atts are acceptable.
IPSEC(validate_proposal_request): proposal part #1,
(key eng. msg.) INBOUND local= 172.18.124.159, remote= 172.18.124.96,
local_proxy= 172.18.124.159/255.255.255.255/0/0 (type=1),
remote_proxy= 14.1.1.106/255.255.255.255/0/0 (type=1),
protocol= ESP, transform= esp-aes 256 esp-sha-hmac ,
lifedur= 0s and 0kb,
spi= 0x0(0), conn_id= 0, keysize= 256, flags= 0x2
IPSEC(validate_proposal_request): proposal part #2,
(key eng. msg.) INBOUND local= 172.18.124.159, remote= 172.18.124.96,
local_proxy= 172.18.124.159/255.255.255.255/0/0 (type=1),
remote_proxy= 14.1.1.106/255.255.255.255/0/0 (type=1),
protocol= PCP, transform= comp-lzs ,
lifedur= 0s and 0kb,
spi= 0x0(0), conn_id= 0, keysize= 0, flags= 0x2
IPSEC(kei_proxy): head = clientmap, map->ivrf = , kei->ivrf =
IPSEC(validate_transform_proposal): transform proposal
    not supported for identity:
{esp-aes 256 esp-sha-hmac comp-lzs }
ISAKMP (0:1): IPsec policy invalidated proposal
ISAKMP (0:1): Checking IPsec proposal 3
ISAKMP: transform 1, ESP_AES
ISAKMP: attributes in transform:
ISAKMP: authenticator is HMAC-MD5
ISAKMP: encaps is 1
ISAKMP: key length is 128
ISAKMP: SA life type in seconds
ISAKMP: SA life duration (VPI) of 0x0 0x20 0xC4 0x9B
ISAKMP (0:1): atts are acceptable.
ISAKMP (0:1): Checking IPsec proposal 3
ISAKMP (0:1): transform 1, IPPCP LZS
ISAKMP: attributes in transform:
ISAKMP: encaps is 1
```

ISAKMP: SA life type in seconds  
ISAKMP: SA life duration (VPI) of 0x0 0x20 0xC4 0x9B  
ISAKMP (0:1): atts are acceptable.  
IPSEC(validate\_proposal\_request): proposal part #1,  
(key eng. msg.) INBOUND local= 172.18.124.159, remote= 172.18.124.96,  
local\_proxy= 172.18.124.159/255.255.255.255/0/0 (type=1),  
remote\_proxy= 14.1.1.106/255.255.255.255/0/0 (type=1),  
protocol= ESP, transform= esp-aes esp-md5-hmac ,  
lifedur= 0s and 0kb,  
spi= 0x0(0), conn\_id= 0, keysize= 128, flags= 0x2  
IPSEC(validate\_proposal\_request): proposal part #2,  
(key eng. msg.) INBOUND local= 172.18.124.159, remote= 172.18.124.96,  
local\_proxy= 172.18.124.159/255.255.255.255/0/0 (type=1),  
remote\_proxy= 14.1.1.106/255.255.255.255/0/0 (type=1),  
protocol= PCP, transform= comp-lzs ,  
lifedur= 0s and 0kb,  
spi= 0x0(0), conn\_id= 0, keysize= 0, flags= 0x2  
IPSEC(kei\_proxy): head = clientmap, map->ivrf = , kei->ivrf =  
IPSEC(validate\_transform\_proposal): transform proposal  
not supported for identity:  
{esp-aes esp-md5-hmac comp-lzs }  
ISAKMP (0:1): IPsec policy invalidated proposal  
ISAKMP (0:1): Checking IPsec proposal 4  
ISAKMP: transform 1, ESP\_AES  
ISAKMP: attributes in transform:  
ISAKMP: authenticator is HMAC-SHA  
ISAKMP: encaps is 1  
ISAKMP: key length is 128  
ISAKMP: SA life type in seconds  
ISAKMP: SA life duration (VPI) of 0x0 0x20 0xC4 0x9B  
ISAKMP (0:1): atts are acceptable.  
ISAKMP (0:1): Checking IPsec proposal 4  
ISAKMP (0:1): transform 1, IPPCP LZS  
ISAKMP: attributes in transform:  
ISAKMP: encaps is 1  
ISAKMP: SA life type in seconds  
ISAKMP: SA life duration (VPI) of 0x0 0x20 0xC4 0x9B  
ISAKMP (0:1): atts are acceptable.  
IPSEC(validate\_proposal\_request): proposal part #1,  
(key eng. msg.) INBOUND local= 172.18.124.159, remote= 172.18.124.96,  
local\_proxy= 172.18.124.159/255.255.255.255/0/0 (type=1),  
remote\_proxy= 14.1.1.106/255.255.255.255/0/0 (type=1),  
protocol= ESP, transform= esp-aes esp-sha-hmac ,  
lifedur= 0s and 0kb,  
spi= 0x0(0), conn\_id= 0, keysize= 128, flags= 0x2  
IPSEC(validate\_proposal\_request): proposal part #2,  
(key eng. msg.) INBOUND local= 172.18.124.159, remote= 172.18.124.96,  
local\_proxy= 172.18.124.159/255.255.255.255/0/0 (type=1),  
remote\_proxy= 14.1.1.106/255.255.255.255/0/0 (type=1),  
protocol= PCP, transform= comp-lzs ,  
lifedur= 0s and 0kb,  
spi= 0x0(0), conn\_id= 0, keysize= 0, flags= 0x2  
IPSEC(kei\_proxy): head = clientmap, map->ivrf = , kei->ivrf =  
IPSEC(validate\_transform\_proposal): transform proposal  
not supported for identity:  
{esp-aes esp-sha-hmac comp-lzs }  
ISAKMP (0:1): IPsec policy invalidated proposal  
ISAKMP (0:1): Checking IPsec proposal 5  
ISAKMP: transform 1, ESP\_AES  
ISAKMP: attributes in transform:  
ISAKMP: authenticator is HMAC-MD5  
ISAKMP: encaps is 1  
ISAKMP: key length is 256  
ISAKMP: SA life type in seconds

```
ISAKMP: SA life duration (VPI) of 0x0 0x20 0xC4 0x9B
ISAKMP (0:1): atts are acceptable.
IPSEC(validate_proposal_request): proposal part #1,
(key eng. msg.) INBOUND local= 172.18.124.159, remote= 172.18.124.96,
local_proxy= 172.18.124.159/255.255.255.255/0/0 (type=1),
remote_proxy= 14.1.1.106/255.255.255.255/0/0 (type=1),
protocol= ESP, transform= esp-aes 256 esp-md5-hmac ,
lifedur= 0s and 0kb,
spi= 0x0(0), conn_id= 0, keysize= 256, flags= 0x2
IPSEC(kei_proxy): head = clientmap, map->ivrf = , kei->ivrf =
IPSEC(validate_transform_proposal): transform proposal
    not supported for identity:
{esp-aes 256 esp-md5-hmac }
ISAKMP (0:1): IPSec policy invalidated proposal
ISAKMP (0:1): Checking IPSec proposal 6
ISAKMP: transform 1, ESP_AES
ISAKMP: attributes in transform:
ISAKMP: authenticator is HMAC-SHA
ISAKMP: encaps is 1
ISAKMP: key length is 256
ISAKMP: SA life type in seconds
ISAKMP: SA life duration (VPI) of 0x0 0x20 0xC4 0x9B
ISAKMP (0:1): atts are acceptable.
IPSEC(validate_proposal_request): proposal part #1,
(key eng. msg.) INBOUND local= 172.18.124.159, remote= 172.18.124.96,
local_proxy= 172.18.124.159/255.255.255.255/0/0 (type=1),
remote_proxy= 14.1.1.106/255.255.255.255/0/0 (type=1),
protocol= ESP, transform= esp-aes 256 esp-sha-hmac ,
lifedur= 0s and 0kb,
spi= 0x0(0), conn_id= 0, keysize= 256, flags= 0x2
IPSEC(kei_proxy): head = clientmap, map->ivrf = , kei->ivrf =
IPSEC(validate_transform_proposal): transform proposal
    not supported for identity:
{esp-aes 256 esp-sha-hmac }
ISAKMP (0:1): IPSec policy invalidated proposal
ISAKMP (0:1): Checking IPSec proposal 7
ISAKMP: transform 1, ESP_AES
ISAKMP: attributes in transform:
ISAKMP: authenticator is HMAC-MD5
ISAKMP: encaps is 1
ISAKMP: key length is 128
ISAKMP: SA life type in seconds
ISAKMP: SA life duration (VPI) of 0x0 0x20 0xC4 0x9B
ISAKMP (0:1): atts are acceptable.
IPSEC(validate_proposal_request): proposal part #1,
(key eng. msg.) INBOUND local= 172.18.124.159, remote= 172.18.124.96,
local_proxy= 172.18.124.159/255.255.255.255/0/0 (type=1),
remote_proxy= 14.1.1.106/255.255.255.255/0/0 (type=1),
protocol= ESP, transform= esp-aes esp-md5-hmac ,
lifedur= 0s and 0kb,
spi= 0x0(0), conn_id= 0, keysize= 128, flags= 0x2
IPSEC(kei_proxy): head = clientmap, map->ivrf = , kei->ivrf =
IPSEC(validate_transform_proposal): transform proposal
    not supported for identity:
{esp-aes esp-md5-hmac }
ISAKMP (0:1): IPSec policy invalidated proposal
ISAKMP (0:1): Checking IPSec proposal 8
ISAKMP: transform 1, ESP_AES
ISAKMP: attributes in transform:
ISAKMP: authenticator is HMAC-SHA
ISAKMP: encaps is 1
ISAKMP: key length is 128
ISAKMP: SA life type in seconds
ISAKMP: SA life duration (VPI) of 0x0 0x20 0xC4 0x9B
```

```
ISAKMP (0:1): atts are acceptable.
IPSEC(validate_proposal_request): proposal part #1,
(key eng. msg.) INBOUND local= 172.18.124.159, remote= 172.18.124.96,
local_proxy= 172.18.124.159/255.255.255.255/0/0 (type=1),
remote_proxy= 14.1.1.106/255.255.255.255/0/0 (type=1),
protocol= ESP, transform= esp-aes esp-sha-hmac ,
lifedur= 0s and 0kb,
spi= 0x0(0), conn_id= 0, keysize= 128, flags= 0x2
IPSEC(kei_proxy): head = clientmap, map->ivrf = , kei->ivrf =
IPSEC(validate_transform_proposal): transform proposal
    not supported for identity:
{esp-aes esp-sha-hmac }
ISAKMP (0:1): IPsec policy invalidated proposal
ISAKMP (0:1): Checking IPsec proposal 9
ISAKMP: transform 1, ESP_3DES
ISAKMP: attributes in transform:
ISAKMP: authenticator is HMAC-MD5
ISAKMP: encaps is 1
ISAKMP: SA life type in seconds
ISAKMP: SA life duration (VPI) of 0x0 0x20 0xC4 0x9B
ISAKMP (0:1): atts are acceptable.
ISAKMP (0:1): Checking IPsec proposal 9
ISAKMP (0:1): transform 1, IPPCP LZS
ISAKMP: attributes in transform:
ISAKMP: encaps is 1
ISAKMP: SA life type in seconds
ISAKMP: SA life duration (VPI) of 0x0 0x20 0xC4 0x9B
ISAKMP (0:1): atts are acceptable.
IPSEC(validate_proposal_request): proposal part #1,
(key eng. msg.) INBOUND local= 172.18.124.159, remote= 172.18.124.96,
local_proxy= 172.18.124.159/255.255.255.255/0/0 (type=1),
remote_proxy= 14.1.1.106/255.255.255.255/0/0 (type=1),
protocol= ESP, transform= esp-3des esp-md5-hmac ,
lifedur= 0s and 0kb,
spi= 0x0(0), conn_id= 0, keysize= 0, flags= 0x2
IPSEC(validate_proposal_request): proposal part #2,
(key eng. msg.) INBOUND local= 172.18.124.159, remote= 172.18.124.96,
local_proxy= 172.18.124.159/255.255.255.255/0/0 (type=1),
remote_proxy= 14.1.1.106/255.255.255.255/0/0 (type=1),
protocol= PCP, transform= comp-lzs ,
lifedur= 0s and 0kb,
spi= 0x0(0), conn_id= 0, keysize= 0, flags= 0x2
IPSEC(kei_proxy): head = clientmap, map->ivrf = , kei->ivrf =
IPSEC(validate_transform_proposal): transform proposal
    not supported for identity:
{esp-3des esp-md5-hmac comp-lzs }
ISAKMP (0:1): IPsec policy invalidated proposal
ISAKMP (0:1): Checking IPsec proposal 10
ISAKMP: transform 1, ESP_3DES
ISAKMP: attributes in transform:
ISAKMP: authenticator is HMAC-SHA
ISAKMP: encaps is 1
ISAKMP: SA life type in seconds
ISAKMP: SA life duration (VPI) of 0x0 0x20 0xC4 0x9B
ISAKMP (0:1): atts are acceptable.
ISAKMP (0:1): Checking IPsec proposal 10
ISAKMP (0:1): transform 1, IPPCP LZS
ISAKMP: attributes in transform:
ISAKMP: encaps is 1
ISAKMP: SA life type in seconds
ISAKMP: SA life duration (VPI) of 0x0 0x20 0xC4 0x9B
ISAKMP (0:1): atts are acceptable.
IPSEC(validate_proposal_request): proposal part #1,
(key eng. msg.) INBOUND local= 172.18.124.159, remote= 172.18.124.96,
```

```
local_proxy= 172.18.124.159/255.255.255.255/0/0 (type=1),
remote_proxy= 14.1.1.106/255.255.255.255/0/0 (type=1),
protocol= ESP, transform= esp-3des esp-sha-hmac ,
lifedur= 0s and 0kb,
spi= 0x0(0), conn_id= 0, keysize= 0, flags= 0x2
IPSEC(validate_proposal_request): proposal part #2,
(key eng. msg.) INBOUND local= 172.18.124.159, remote= 172.18.124.96,
local_proxy= 172.18.124.159/255.255.255.255/0/0 (type=1),
remote_proxy= 14.1.1.106/255.255.255.255/0/0 (type=1),
protocol= PCP, transform= comp-lzs ,
lifedur= 0s and 0kb,
spi= 0x0(0), conn_id= 0, keysize= 0, flags= 0x2
IPSEC(kei_proxy): head = clientmap, map->ivrf = , kei->ivrf =
IPSEC(validate_transform_proposal): transform proposal
    not supported for identity:
{esp-3des esp-sha-hmac comp-lzs }
ISAKMP (0:1): IPsec policy invalidated proposal
ISAKMP (0:1): Checking IPsec proposal 11
ISAKMP: transform 1, ESP_3DES
ISAKMP: attributes in transform:
ISAKMP: authenticator is HMAC-MD5
ISAKMP: encaps is 1
ISAKMP: SA life type in seconds
ISAKMP: SA life duration (VPI) of 0x0 0x20 0xC4 0x9B
ISAKMP (0:1): atts are acceptable.
IPSEC(validate_proposal_request): proposal part #1,
(key eng. msg.) INBOUND local= 172.18.124.159, remote= 172.18.124.96,
local_proxy= 172.18.124.159/255.255.255.255/0/0 (type=1),
remote_proxy= 14.1.1.106/255.255.255.255/0/0 (type=1),
protocol= ESP, transform= esp-3des esp-md5-hmac ,
lifedur= 0s and 0kb,
spi= 0x0(0), conn_id= 0, keysize= 0, flags= 0x2
IPSEC(kei_proxy): head = clientmap, map->ivrf = , kei->ivrf =
ISAKMP (0:1): processing NONCE payload. message ID = -1836135476
ISAKMP (0:1): processing ID payload. message ID = -1836135476
ISAKMP (0:1): processing ID payload. message ID = -1836135476
ISAKMP (0:1): asking for 1 spis from ipsec
ISAKMP (0:1): Node -1836135476, Input = IKE_MSG_FROM_PEER,
    IKE_QM_EXCH
ISAKMP (0:1): Old State = IKE_QM_READY
    New State = IKE_QM_SPI_STARVE
ISAKMP (0:1): received packet from 172.18.124.96 dport 500
    sport 500 Global (R) QM_IDLE
ISAKMP: set new node -1171731793 to QM_IDLE
ISAKMP (0:1): processing HASH payload. message ID = -1171731793
ISAKMP (0:1): processing SA payload. message ID = -1171731793
ISAKMP (0:1): Checking IPsec proposal 1
ISAKMP: transform 1, ESP_AES
ISAKMP: attributes in transform:
ISAKMP: authenticator is HMAC-MD5
ISAKMP: encaps is 1
ISAKMP: key length is 256
ISAKMP: SA life type in seconds
ISAKMP: SA life duration (VPI) of 0x0 0x20 0xC4 0x9B
ISAKMP (0:1): atts are acceptable.
ISAKMP (0:1): Checking IPsec proposal 1
ISAKMP (0:1): transform 1, IPPCP LZS
ISAKMP: attributes in transform:
ISAKMP: encaps is 1
ISAKMP: SA life type in seconds
ISAKMP: SA life duration (VPI) of 0x0 0x20 0xC4 0x9B
ISAKMP (0:1): atts are acceptable.
IPSEC(validate_proposal_request): proposal part #1,
(key eng. msg.) INBOUND local= 172.18.124.159, remote= 172.18.124.96,
```



```
local_proxy= 0.0.0.0/0.0.0.0/0/0 (type=4),
remote_proxy= 14.1.1.106/255.255.255.255/0/0 (type=1),
protocol= ESP, transform= esp-aes 256 esp-md5-hmac ,
lifedur= 0s and 0kb,
spi= 0x0(0), conn_id= 0, keysize= 256, flags= 0x2
IPSEC(validate_proposal_request): proposal part #2,
(key eng. msg.) INBOUND local= 172.18.124.159, remote= 172.18.124.96,
local_proxy= 0.0.0.0/0.0.0.0/0/0 (type=4),
remote_proxy= 14.1.1.106/255.255.255.255/0/0 (type=1),
protocol= PCP, transform= comp-lzs ,
lifedur= 0s and 0kb,
spi= 0x0(0), conn_id= 0, keysize= 0, flags= 0x2
IPSEC(kei_proxy): head = clientmap, map->ivrf = , kei->ivrf =
IPSEC(validate_transform_proposal): transform proposal
    not supported for identity:
{esp-aes 256 esp-md5-hmac comp-lzs }
ISAKMP (0:1): IPsec policy invalidated proposal
ISAKMP (0:1): Checking IPsec proposal 2
ISAKMP: transform 1, ESP_AES
ISAKMP: attributes in transform:
ISAKMP: authenticator is HMAC-SHA
ISAKMP: encaps is 1
ISAKMP: key length is 256
ISAKMP: SA life type in seconds
ISAKMP: SA life duration (VPI) of 0x0 0x20 0xC4 0x9B
ISAKMP (0:1): atts are acceptable.
ISAKMP (0:1): Checking IPsec proposal 2
ISAKMP (0:1): transform 1, IPPCP LZS
ISAKMP: attributes in transform:
ISAKMP: encaps is 1
ISAKMP: SA life type in seconds
ISAKMP: SA life duration (VPI) of 0x0 0x20 0xC4 0x9B
ISAKMP (0:1): atts are acceptable.
IPSEC(validate_proposal_request): proposal part #1,
(key eng. msg.) INBOUND local= 172.18.124.159, remote= 172.18.124.96,
local_proxy= 0.0.0.0/0.0.0.0/0/0 (type=4),
remote_proxy= 14.1.1.106/255.255.255.255/0/0 (type=1),
protocol= ESP, transform= esp-aes 256 esp-sha-hmac ,
lifedur= 0s and 0kb,
spi= 0x0(0), conn_id= 0, keysize= 256, flags= 0x2
IPSEC(validate_proposal_request): proposal part #2,
(key eng. msg.) INBOUND local= 172.18.124.159, remote= 172.18.124.96,
local_proxy= 0.0.0.0/0.0.0.0/0/0 (type=4),
remote_proxy= 14.1.1.106/255.255.255.255/0/0 (type=1),
protocol= PCP, transform= comp-lzs ,
lifedur= 0s and 0kb,
spi= 0x0(0), conn_id= 0, keysize= 0, flags= 0x2
IPSEC(kei_proxy): head = clientmap, map->ivrf = , kei->ivrf =
IPSEC(validate_transform_proposal): transform proposal
    not supported for identity:
{esp-aes 256 esp-sha-hmac comp-lzs }
ISAKMP (0:1): IPsec policy invalidated proposal
ISAKMP (0:1): Checking IPsec proposal 3
ISAKMP: transform 1, ESP_AES
ISAKMP: attributes in transform:
ISAKMP: authenticator is HMAC-MD5
ISAKMP: encaps is 1
ISAKMP: key length is 128
ISAKMP: SA life type in seconds
ISAKMP: SA life duration (VPI) of 0x0 0x20 0xC4 0x9B
ISAKMP (0:1): atts are acceptable.
ISAKMP (0:1): Checking IPsec proposal 3
ISAKMP (0:1): transform 1, IPPCP LZS
ISAKMP: attributes in transform:
```

```
ISAKMP: encaps is 1
ISAKMP: SA life type in seconds
ISAKMP: SA life duration (VPI) of 0x0 0x20 0xC4 0x9B
ISAKMP (0:1): atts are acceptable.
IPSEC(validate_proposal_request): proposal part #1,
(key eng. msg.) INBOUND local= 172.18.124.159, remote= 172.18.124.96,
local_proxy= 0.0.0.0/0.0.0.0/0/0 (type=4),
remote_proxy= 14.1.1.106/255.255.255.255/0/0 (type=1),
protocol= ESP, transform= esp-aes esp-md5-hmac ,
lifedur= 0s and 0kb,
spi= 0x0(0), conn_id= 0, keysize= 128, flags= 0x2
IPSEC(validate_proposal_request): proposal part #2,
(key eng. msg.) INBOUND local= 172.18.124.159, remote= 172.18.124.96,
local_proxy= 0.0.0.0/0.0.0.0/0/0 (type=4),
remote_proxy= 14.1.1.106/255.255.255.255/0/0 (type=1),
protocol= PCP, transform= comp-lzs ,
lifedur= 0s and 0kb,
spi= 0x0(0), conn_id= 0, keysize= 0, flags= 0x2
IPSEC(kei_proxy): head = clientmap, map->ivrf = , kei->ivrf =
IPSEC(validate_transform_proposal): transform proposal
    not supported for identity:
{esp-aes esp-md5-hmac comp-lzs }
ISAKMP (0:1): IPSec policy invalidated proposal
ISAKMP (0:1): Checking IPSec proposal 4
ISAKMP: transform 1, ESP_AES
ISAKMP: attributes in transform:
ISAKMP: authenticator is HMAC-SHA
ISAKMP: encaps is 1
ISAKMP: key length is 128
ISAKMP: SA life type in seconds
ISAKMP: SA life duration (VPI) of 0x0 0x20 0xC4 0x9B
ISAKMP (0:1): atts are acceptable.
ISAKMP (0:1): Checking IPSec proposal 4
ISAKMP (0:1): transform 1, IPPCP LZS
ISAKMP: attributes in transform:
ISAKMP: encaps is 1
ISAKMP: SA life type in seconds
ISAKMP: SA life duration (VPI) of 0x0 0x20 0xC4 0x9B
ISAKMP (0:1): atts are acceptable.
IPSEC(validate_proposal_request): proposal part #1,
(key eng. msg.) INBOUND local= 172.18.124.159, remote= 172.18.124.96,
local_proxy= 0.0.0.0/0.0.0.0/0/0 (type=4),
remote_proxy= 14.1.1.106/255.255.255.255/0/0 (type=1),
protocol= ESP, transform= esp-aes esp-sha-hmac ,
lifedur= 0s and 0kb,
spi= 0x0(0), conn_id= 0, keysize= 128, flags= 0x2
IPSEC(validate_proposal_request): proposal part #2,
(key eng. msg.) INBOUND local= 172.18.124.159, remote= 172.18.124.96,
local_proxy= 0.0.0.0/0.0.0.0/0/0 (type=4),
remote_proxy= 14.1.1.106/255.255.255.255/0/0 (type=1),
protocol= PCP, transform= comp-lzs ,
lifedur= 0s and 0kb,
spi= 0x0(0), conn_id= 0, keysize= 0, flags= 0x2
IPSEC(kei_proxy): head = clientmap, map->ivrf = , kei->ivrf =
IPSEC(validate_transform_proposal): transform proposal
    not supported for identity:
{esp-aes esp-sha-hmac comp-lzs }
ISAKMP (0:1): IPSec policy invalidated proposal
ISAKMP (0:1): Checking IPSec proposal 5
ISAKMP: transform 1, ESP_AES
ISAKMP: attributes in transform:
ISAKMP: authenticator is HMAC-MD5
ISAKMP: encaps is 1
ISAKMP: key length is 256
```

ISAKMP: SA life type in seconds  
ISAKMP: SA life duration (VPI) of 0x0 0x20 0xC4 0x9B  
ISAKMP (0:1): processing ID payload. message ID = -1171731793  
ISAKMP (0:1): processing ID payload. message ID = -1171731793  
ISAKMP (0:1): asking for 1 spis from ipsec  
ISAKMP (0:1): Node -1171731793, Input = IKE\_MESG\_FROM\_PEER,  
IKE\_QM\_EXCH  
ISAKMP (0:1): Old State = IKE\_QM\_READY  
New State = IKE\_QM\_SPI\_STARVE  
IPSEC(key\_engine): got a queue event...  
IPSEC(spi\_response): getting spi 3756150268 for SA  
from 172.18.124.159 to 172.18.124.96 for prot 3  
IPSEC(key\_engine): got a queue event...  
IPSEC(spi\_response): getting spi 2229862856 for SA  
from 172.18.124.159 to 172.18.124.96 for prot 3  
ISAKMP: received ke message (2/1)  
ISAKMP: received ke message (2/1)  
ISAKMP (0:1): sending packet to 172.18.124.96 my\_port 500  
peer\_port 500 (R) QM\_IDLE  
ISAKMP (0:1): Node -1836135476, Input = IKE\_MESG\_FROM\_IPSEC,  
IKE\_SPI\_REPLY  
ISAKMP (0:1): Old State = IKE\_QM\_SPI\_STARVE  
New State = IKE\_QM\_R\_QM2  
ISAKMP (0:1): received packet from 172.18.124.96 dport 500  
sport 500 Global (R) QM\_IDLE  
ISAKMP: Locking peer struct 0x63B2EAE4,  
IPSEC refcount 1 for for stuff\_ke  
**ISAKMP (0:1): Creating IPsec SAs**  
inbound SA from 172.18.124.96 to 172.18.124.159 (f/i) 0/ 0  
(proxy 14.1.1.106 to 172.18.124.159)  
has spi 0xDFE24DFC and conn\_id 2000 and flags 2  
lifetime of 2147483 seconds  
has client flags 0x0  
ISAKMP (0:1): Old State = IKE\_QM\_SPI\_STARVE  
New State = IKE\_QM\_R\_QM2  
ISAKMP (0:1): received packet from 172.18.124.96 dport 500  
sport 500 Global (R) QM\_IDLE  
ISAKMP: Locking peer struct 0x63B2EAE4,  
IPSEC refcount 2 for for stuff\_ke  
ISAKMP (0:1): Creating IPsec SAs  
inbound SA from 172.18.124.96 to 172.18.124.159 (f/i) 0/ 0  
(proxy 14.1.1.106 to 0.0.0.0)  
has spi 0x84E901C8 and conn\_id 2002 and flags 2  
lifetime of 2147483 seconds  
has client flags 0x0  
outbound SA from 172.18.124.159 to 172.18.124.96 (f/i) 0/ 0  
(proxy 0.0.0.0 to 14.1.1.106 )  
has spi -802758470 and conn\_id 2003 and flags A  
IPSEC(add mtree): src 0.0.0.0, dest 14.1.1.106, dest\_port 0  
IPSEC(create\_sa): sa created,  
(sa) sa\_dest= 172.18.124.159, sa\_prot= 50,  
sa\_spi= 0x84E901C8(2229862856),  
sa\_trans= esp-3des esp-md5-hmac , sa\_conn\_id= 2002  
IPSEC(create\_sa): sa created,  
(sa) sa\_dest= 172.18.124.96, sa\_prot= 50,  
sa\_spi= 0xD026E0BA(3492208826),  
sa\_trans= esp-3des esp-md5-hmac , sa\_conn\_id= 2003  
ISAKMP (0:1): received packet from 172.18.124.96 dport 500  
sport 500 Global (R) QM\_IDLE  
ISAKMP: set new node 839140381 to QM\_IDLE  
ISAKMP (0:1): processing HASH payload. message ID = 839140381  
ISAKMP (0:1): processing NOTIFY R\_U\_THERE protocol 1  
spi 0, message ID = 839140381, sa = 63972310  
ISAKMP (0:1): deleting node 839140381 error FALSE

```
reason "informational (in) state 1"
ISAKMP (0:1): Input = IKE_MSG_FROM_PEER, IKE_INFO_NOTIFY
ISAKMP (0:1): Old State = IKE_P1_COMPLETE
New State = IKE_P1_COMPLETE
ISAKMP (0:1): DPD/R_U_THERE received from peer 172.18.124.96,
sequence 0xA5A4632A
ISAKMP: set new node 760238809 to QM_IDLE
ISAKMP (0:1): sending packet to 172.18.124.96 my_port 500
peer_port 500 (R) QM_IDLE
ISAKMP (0:1): purging node 760238809
ISAKMP (0:1): Input = IKE_MSG_FROM_PEER,
IKE_MSG_KEEP_ALIVE
ISAKMP (0:1): Old State = IKE_P1_COMPLETE
New State = IKE_P1_COMPLETE
ISAKMP (0:1): purging node 188739171
ISAKMP (0:1): purging node -1836135476
ISAKMP (0:1): purging node -1171731793
3640#
```

## [関連情報](#)

- [Cisco VPN 3000 コンセントレータ製品に関するサポート ページ](#)
- [Cisco VPN 3000 クライアント製品に関するサポート ページ](#)
- [IPSec ネゴシエーション/IKE プロトコル テクノロジーに関するサポート](#)
- [テクニカル サポートとドキュメント – Cisco Systems](#)