

VoIP avec le RVI

Contenu

[Introduction](#)

[Conditions préalables](#)

[Conditions requises](#)

[Composants utilisés](#)

[Conventions](#)

[Configurer](#)

[Diagramme du réseau](#)

[Configurations](#)

[Vérifier](#)

[Sortie Raleigh5300A](#)

[Sortie SanJose5300A](#)

[Sortie Raleigh3600A](#)

[Sortie SanJose3640A](#)

[Dépanner](#)

[Dépannage des commandes](#)

[Informations connexes](#)

Introduction

Ce document t'affiche comment configurer et dépanner la réponse vocale interactive de base (RVI) dans un réseau VoIP avec des passerelles. Le RVI est un terme utilisé pour décrire les systèmes qui fournissent des informations sous forme de messages enregistrés au-dessus des lignes téléphoniques en réponse à l'utilisateur entré sous forme de mots parlés ou de signalisation multifréquence de double tonalité (DTMF) (plus communs). Les exemples incluent les banques qui te permettent pour vérifier votre équilibre de tous les téléphone et systèmes automatisés de valeur de bourse.

Conditions préalables

Conditions requises

Aucune spécification déterminée n'est requise pour ce document.

Composants utilisés

Les informations contenues dans ce document sont basées sur les versions de matériel et de logiciel suivantes :

- Version de logiciel 12.1(1) de Cisco IOS® qui fonctionne dans les Routeurs.

Les informations présentées dans ce document ont été créées à partir de périphériques dans un environnement de laboratoire spécifique. Tous les périphériques utilisés dans ce document ont démarré avec une configuration effacée (par défaut). Si vous travaillez dans un réseau opérationnel, assurez-vous de bien comprendre l'impact potentiel de toute commande avant de l'utiliser.

Conventions

Pour plus d'informations sur les conventions utilisées dans ce document, reportez-vous à [Conventions relatives aux conseils techniques Cisco](#).

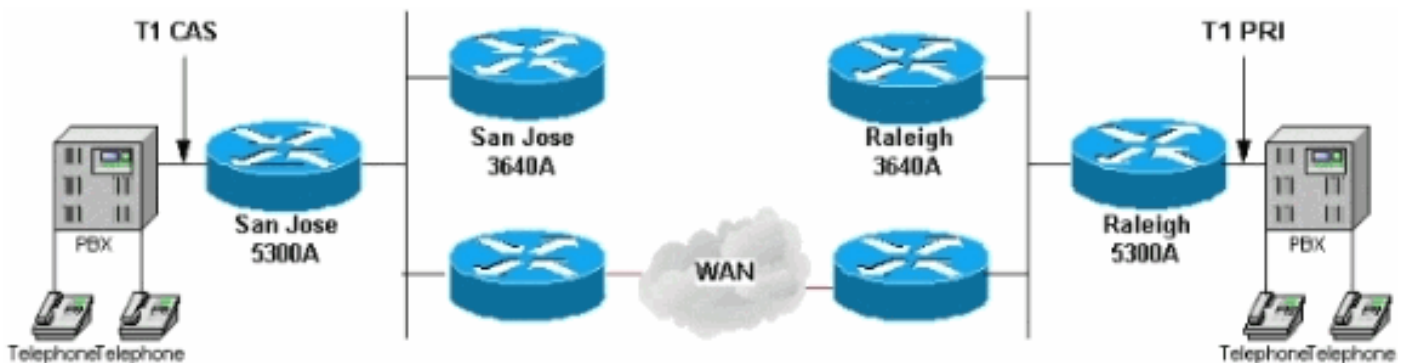
Configurer

Cette section vous fournit des informations pour configurer les fonctionnalités décrites dans ce document.

Remarque: Utilisez l'outil [Command Lookup Tool](#) (clients [enregistrés](#) seulement) pour trouver plus d'informations sur les commandes utilisées dans ce document.

Diagramme du réseau

Ce document utilise la configuration réseau indiquée dans le diagramme suivant :



Le Raleigh5300 dans ce schéma de réseau exécute le RVI utilisant le script interne de `clid_authn_collect`. Ce script regarde l'identification du numéro automatique d'un appel entrant (ANI). Ceci aide l'appel qui reçoit des périphériques pour identifier le nombre de l'appelant et Service d'identification du numéro composé réacheminé (RDNIS) et le nombre qui s'est appelé pour atteindre un périphérique particulier. Alors il essaye d'apparier ces derniers avec un nom d'utilisateur et mot de passe. Si le script ne s'assortit pas à un nom d'utilisateur et mot de passe, comme le fait dans ce cas il, il utilise des Guides vocaux pour obtenir le numéro et le mot de passe de compte (souvent désignés sous le nom du « PIN »). Après qu'un appelant écrive le nom d'utilisateur et mot de passe et soit authentifié, le script incite pour qu'un numéro de destination s'appelle.

La configuration RVI ici est très une configuration de base. Dans un vrai environnement, le nom d'utilisateur et mot de passe sont enregistrés dans un serveur de Service RADIUS (Remote Authentication Dial-In User Service). L'authentification login d'Authentification, autorisation et comptabilité (AAA) indique H.323 RADIUS, et non local. Ceci est accompli avec la commande de **rayon de groupe de h323 d'authentification login d'AAA** dans la configuration du routeur qui exécute

le RVI.

Sous la commande du **dial-peer voice 1**, l'application IVR est configurée. Dans ce cas, il indique le script de **clid_authen_collect**. Il y a de diverses configurations pour le RVI en logiciel. Écrivez le [show call application voice de](#) commande EXEC [résumé] pour voir ceci. Référez-vous à [configurer la réponse vocale interactive pour le](#) pour en savoir plus de [plates-formes d'accès de Cisco](#).

Configurations

Ce document utilise les configurations suivantes :

- [Raleigh 5300A](#)
- [Raleigh 3640A](#)
- [San Jose 5300A](#)
- [San Jose 3640A](#)

Raleigh 5300A

```
Raleigh5300A#show run
Building configuration...

Current configuration:
!
! Last configuration change at 00:42:21 UTC Tue Mar 28
2000
! NVRAM config last updated at 00:42:22 UTC Tue Mar 28
2000
!
version 12.1
service timestamps debug datetime msec
service timestamps log datetime msec
no service password-encryption
!
hostname Raleigh5300A
!
logging buffered 50000 debugging
AAA new-model
AAA authentication login default none
AAA authentication login h323 local
enable secret password !--- Choose a strong password
with at least one capital letter, !--- one number, and
one special character. ! username 1234 password 0 5678
spe 1/0 1/7 firmware location
system:/ucode/mica_port_firmware ! ! resource-pool
disable ! ! ! ! clock calendar-valid ip subnet-zero !
isdn switch-type primary-5ess isdn voice-call-failure 0
mta receive maximum-recipients 0 ! ! controller T1 0
framing esf clock source primary linecode b8zs pri-
group timeslots 1-24 ! controller T1 1 clock source line
secondary 1 ! controller T1 2 ! controller T1 3 ! !
voice-port 0:D ! ! dial-peer voice 1 pots application
clid_authen_collect incoming called-number 4085556400
answer-address 9195552001 destination-pattern
919#9195552... port 0:D prefix 919 ! dial-peer voice 2
voip destination-pattern 4085556400 tech-prefix 408#
session target ras ! num-exp 6... 4085556... !--- This
```

```
command is used to configure a Cisco IOS® gateway to
route the calls coming to a main direct inward dial
(DID) number to an AutoAttendant. gateway ! interface
Ethernet0 no ip address shutdown ! interface Serial0:23
no ip address ip mroute-cache isdn switch-type primary-
5ess isdn incoming-voice modem fair-queue 64 256 0 no
cdp enable ! interface FastEthernet0 ip address
172.16.120.2 255.255.255.0 duplex auto speed auto h323-
gateway voip interface h323-gateway voip id RALgk1
ipaddr 172.16.120.1 1718 h323-gateway voip h323-id
RAL5300A@cisco.com h323-gateway voip tech-prefix 919# !
ip classless ip route 172.16.110.0 255.255.255.0
172.16.120.10 no ip http server ! line con 0 transport
input none line 1 48 transport output lat pad telnet
rlogin udptn v120 lapb-ta line aux 0 line vty 0 4
password cisco ! ntp clock-period 17179842 ntp server
172.16.110.10 end
```

Raleigh 3640A

```
Raleigh3640A#show run
Building configuration...
```

```
Current configuration:
```

```
!
version 12.1
service timestamps debug datetime msec
service timestamps log datetime msec
no service password-encryption
!
hostname Raleigh3640A
!
logging buffered 50000 debugging
enable secret password
!--- Choose a strong password with at least one capital
letter, !--- one number, and one special character. !!
!!! ip subnet-zero ! ip dvmrp route-limit 20000 !!!
!! interface Ethernet1/0 ip address 172.16.120.1
255.255.255.0 ! interface Serial1/0 no ip address no ip
mroute-cache no fair-queue ! interface TokenRing1/0 no
ip address shutdown ring-speed 16 ! ip classless ip
route 172.16.110.0 255.255.255.0 172.16.120.10 no ip
http server !! gatekeeper zone local RALgk1 cisco.com
zone remote SJgk1 cisco.com 172.16.110.1 1719 zone
prefix SJgk1 408..... gw-type-prefix 408#* no shutdown
!! line con 0 transport input none line aux 0 line vty
0 4 password cisco login ! ntp clock-period 17179856 ntp
server 172.16.110.10 end
```

San Jose 5300A

```
SanJose5300A#show run
Building configuration...
```

```
Current configuration:
```

```
!
! Last configuration change at 00:15:49 UTC Tue Mar 28
2000
! NVRAM config last updated at 00:15:50 UTC Tue Mar 28
2000
!
```

```
version 12.1
service timestamps debug datetime msec
service timestamps log datetime msec
no service password-encryption
!
hostname SanJose5300A
!
logging buffered 50000 debugging
enable secret password
!--- Choose a strong password with at least one capital
letter, !--- one number, and one special character. !!
! resource-pool disable ! ! ! ! ! ip subnet-zero ! isdn
voice-call-failure 0 mta receive maximum-recipients 0 !
! controller T1 0 framing esf clock source line primary
linecode b8zs ds0-group 1 timeslots 1-4 type e&m-
immediate-start ! controller T1 1 clock source line
secondary 1 ! controller T1 2 ! controller T1 3 ! !
voice-port 0:1 ! ! dial-peer voice 1 pots answer-address
4085556001 destination-pattern 408#4085556... direct-
inward-dial port 0:1 prefix 6 ! dial-peer voice 2 voip
destination-pattern 9195552... tech-prefix 919# session
target ras ! num-exp 2... 9195552... gateway ! interface
Ethernet0 no ip address ! interface FastEthernet0 ip
address 172.16.110.2 255.255.255.0 duplex auto speed
auto h323-gateway voip interface h323-gateway voip id
SJgk1 ipaddr 172.16.110.1 1718 h323-gateway voip h323-id
SJ5300A@cisco.com h323-gateway voip tech-prefix 408# !
ip classless ip route 172.16.120.0 255.255.255.0
172.16.110.10 no ip http server ! ! ! line con 0
transport input none line aux 0 line vty 0 4 password
cisco login ! ntp clock-period 17179924 ntp server
172.16.110.10 end
```

San Jose 3640A

```
SanJose3640A#show run
Building configuration...

Current configuration:
!
! NVRAM config last updated at 00:05:33 UTC Tue Mar 28
2000
!
version 12.1
service timestamps debug datetime msec
service timestamps log datetime msec
no service password-encryption
!
hostname SanJose3640A
!
boot system flash c3640-ix-mz.120-7.T
logging buffered 50000 debugging
enable secret password !--- Choose a strong password
with at least one capital letter, !--- one number, and
one special character. ! ! ! ! ! ip subnet-zero ! ip
dvmrp route-limit 20000 ! ! interface Ethernet1/0 ip
address 172.16.110.1 255.255.255.0 ! interface Serial1/0
no ip address no ip mroute-cache shutdown no fair-queue
! interface Ethernet1/1 no ip address shutdown ! ip
classless ip route 172.16.120.0 255.255.255.0
172.16.110.10 no ip http server ! tftp-server
flash:c3640-ix-mz.121-1.bin ! gatekeeper zone local
```

```
SJgk1 cisco.com zone remote RALgk1 cisco.com
172.16.120.1 1719 zone prefix RALgk1 919..... gw-type-
prefix 919#* no shutdown !! line con 0 transport input
none line aux 0 line vty 0 4 password cisco login ! ntp
clock-period 17179867 ntp server 172.16.110.10 end
```

Vérifier

Cette section fournit les informations pour confirmer que votre configuration fonctionne correctement.

L'[Outil Interpréteur de sortie](#) (clients [enregistrés](#) uniquement) (OIT) prend en charge certaines commandes **show**. Utilisez l'OIT pour afficher une analyse de la sortie de la commande **show**.

- [show gateway](#) - Affiche l'état en cours de passerelle.
- [show gatekeeper calls](#) - Affiche le statut de chaque appel actuel qu'un garde-porte se rend compte de.
- [show gatekeeper gw-type-prefix](#) - Affiche la table de préfixe de technologie de passerelle.
- [show flash](#) - Affiche le contenu de la mémoire flash.
- [clid_authn_collect de show call application voice](#) - Affiche une liste d'Applications voix qui sont configurées.
- [show gatekeeper endpoints](#) - Affiche le statut de tous les points finaux enregistrés pour un garde-porte.
- [show log](#) - Affiche la **sortie de débogage** du tampon de journalisation quand des commandes de **débogage** sont activées.
- [show call active voice \[brief\]](#) - Affiche l'état d'appel pour tous les ports vocaux.
- [show debugging](#) - Affiche que des commandes de **débogage** sont activé à un moment donné.

Après que vous écrivez les configurations affichées dans ce document dans vos Routeurs, vérifiez que le réseau fonctionne correctement. Ces commandes et sortie respective affichent une implémentation réussie des configurations dans ce document.

Les la plupart des problèmes courants avec le RVI incluent :

- L'application n'est pas correctement configurée sur le cadran-pair de réseau téléphonique public commuté (POTS). Assurez-vous que l'appel entrant de téléphonie apparie l'homologue de numérotation POTS avec l'application. L'homologue de numérotation POTS apparie le premier cadran-pair avec la commande assortie de port dans la configuration ou si le numéro appelé apparie le **<number> entrant de numéro appelé de** commande secondaire de cadran-pair. Vérifiez que l'application existe réellement par la commande de [show call application voice \[résumé\]](#). Assurez-vous que le nom d'application ne contient pas une erreur de syntaxe.
- Assurez-vous que le direct-inward-dial n'est pas configuré sur les pots de cadran-pair.
- Assurez-vous que les fichiers audios appropriés sont chargés dans l'éclair.
- Assurez-vous que l'authentification avec le nom d'utilisateur et mot de passe est correctement configurée.

Sortie Raleigh5300A

```
Raleigh5300A#show gateway
```

```
Gateway RAL5300A@cisco.com is registered to Gatekeeper RALgk1
```

```
Alias list (CLI configured)
H323-ID RAL5300A@cisco.com
Alias list (last RCF)
H323-ID RAL5300A@cisco.com
```

H323 resource thresholding is Disabled

Raleigh5300A#**show flash**

System flash directory:

File	Length	Name/status
1	7084904	c5300-is-mz.121-1.bin
2	23186	enter_account.au
3	38087	enter_destination.au
4	20414	enter_pin.au
5	17513	auth_failed.au

[7184432 bytes used, 1204176 available, 8388608 total]
8192K bytes of processor board System flash (Read/Write)

Raleigh5300A#**show call application voice clid_authen_collect**

Idle call list has 1 calls on it.

Application clid_authen_collect

The script is compiled into the image
It has 0 calls active.

The TCL Script is:

```
-----
# clid_authen_collect.tcl
#-----
# September 1998, David Ramsthaller
#
# Copyright (c) 1998, 1999 by cisco Systems, Inc.
# All rights reserved.
#-----
# Mimic the clid_authen_collect script in the SP1.0 release.
#
# It authenticates using (ani, dnis) for (account, password). If
# that fails, it collects account and pin number, then authenticates
# using (account, pin).
#
# If authentication passes, it collects the destination number and
# places the call.
#
# The main routine is at the bottom. Start reading the script there.
#
```

```
proc do_get_account {} {
    global state
    global account

    set prompt(url) flash:enter_account.au
    set prompt(interrupt) true
    set prompt(abortKey) *
    set prompt(terminationKey) #
    set patterns(account) .+
    set event [promptAndCollect prompt info patterns ]
```

```

if {$event == "collect success"} {
    set state get_pin
    set account $info(digits)
    return 0
}

if {$event == "collect aborted"} {
    set state get_account
    return 0
}

if {$event == "collect fail" || $event == "collect timeout"} {
    set state get_account
    return 0
}
set state end
return 0
}

proc do_get_pin {} {
    global state
    global pin

    set prompt(url) flash:enter_pin.au
    set prompt(interrupt) true
    set prompt(abortKey) *
    set prompt(terminationKey) #
    set patterns(account) .+
    set event [promptAndCollect prompt info patterns ]

    if {$event == "collect success"} {
        set state authenticate
        set pin $info(digits)
        return 0
    }

    if {$event == "collect aborted"} {
        set state get_account
        return 0
    }

    if {$event == "collect fail" || $event == "collect timeout"} {
        # timeout
        if {$info(code) == 102} {
            set state get_pin
            return 0
        }

        # invalid number
        if {$info(code) == 28} {
            set state get_pin
            return 0
        }
    }
}

set state end

```



```

    return 0
}

proc do_authenticate {} {
    global state
    global pin
    global account

    set event [authenticate $account $pin info]

    if { $event == "authenticated" } {
        set state authen_pass
        return 0
    }

    if { $event == "authentication failed" } {
        set state authen_fail
        return 0
    }

    set state end
    return 0
}

proc do_get_dest {} {
    global state
    global destination

    set prompt(url) flash:enter_destination.au
    set prompt(interrupt) true
    set prompt(abortKey) *
    set prompt(terminationKey) #
    set prompt(dialPlan) true

    set event [promptAndCollect prompt info ]

    if { $event == "collect success" } {
        set state place_call
        set destination $info(digits)
        return 0
    }

    if { $event == "collect aborted" } {
        set state get_dest
        return 0
    }

    if { $event == "collect fail" || $event == "collect timeout" } {
        set state get_dest
        return 0
    }
    set state end
    return 0
}

```

```
}
```

```
proc do_authen_pass {} {  
    global state  
    global destination  
  
    set dnislens [string len [dnis]]  
  
    if { [did] && $dnislens } {  
        set destination [dnis]  
        set state place_call  
    } else {  
        set state get_dest  
    }  
    return 0  
}
```

```
proc do_place_call {} {  
    global state  
    global destination  
  
    set event [placeCall $destination callInfo info]  
  
    if {$event == "active"} {  
        set state active  
        return 0  
    }  
    if {$event == "call fail"} {  
        set state place_fail  
        return 0  
    }  
  
    set state end  
    return 0  
}
```

```
proc do_active_notimer {} {  
    global state  
  
    set event [waitEvent]  
    while { $event == "digit" } {  
        set event [waitEvent]  
    }  
    set state end  
    return 0  
}
```

```
proc do_active_last_timer {} {  
    global state  
  
    set event [startTimer [creditTimeLeft] info]  
    while { $event == "digit" } {  
        set event [startTimer $info(timeLeft) info]  
    }  
}
```

```

if { $event == "timeout" } {
    clearOutgoingLeg retInfo
    set state out_of_time
} else {
    set state end
}

return 0
}

proc do_active_timer {} {
    global state

    if { [creditTimeLeft] < 10 } {
        do_active_last_timer
        return 0
    }
    set delay [expr [creditTimeLeft] - 10]
    set event [startTimer $delay info]
    while { $event == "digit" } {
        set event [startTimer $info(timeLeft) info]
    }
    if { $event == "timeout" } {
        insertMessage flash:beep.au retInfo
        do_active_last_timer
    } else {
        set state end
    }

    return 0
}

proc do_active {} {
    global state

    if { ( [creditTimeLeft] == "unlimited") ||
        ([creditTimeLeft] == "uninitialized") } {
        do_active_notimer
    } else {
        do_active_timer
    }
    return 0
}

proc do_out_of_time {} {
    global state

    set prompt(url) flash:out_of_time.au
    set prompt(playComplete) true
    set event [promptAndCollect prompt info ]
    set state end
    return 0
}

proc do_authen_fail {} {

```

```

global state

set prompt(url) flash:auth_failed.au
set prompt(playComplete) true
set event [promptAndCollect prompt info ]
set state end
return 0
}

proc do_place_fail {} {
    global state

    playFailureTone 5 retInfo
    set state end
    return 0
}

#-----
# And here is the main loop
#

acceptCall

set event [authenticate [ani] [dnis] info]

if {$event != "authenticated"} {
    set state get_account
} else {
    set state authen_pass
}

while {$state != "end"} {
    puts "cid([callID]) running state $state"
    if {$state == "get_account"} {
        do_get_account
    } elseif {$state == "get_pin"} {
        do_get_pin
    } elseif {$state == "authenticate"} {
        do_authenticate
    } elseif {$state == "get_dest"} {
        do_get_dest
    } elseif {$state == "place_call"} {
        do_place_call
    } elseif {$state == "active"} {
        do_active
    } elseif {$state == "authen_fail"} {
        do_authen_fail
    } elseif {$state == "authen_pass"} {
        do_authen_pass
    } elseif {$state == "place_fail"} {
        do_place_fail
    } elseif {$state == "out_of_time"} {
        do_out_of_time
    } else {
        break
    }
}

```

```
}  
}
```

Le routeur de Raleigh fait activer quelques commandes de débogage. La commande de **show debug** affiche ceci :

```
Raleigh5300A#show debug
```

```
General OS: AAA Authentication debugging is on  
ISDN: ISDN Q931 packets debugging is on  
ISDN Q931 packets debug DSLs. (On/Off/No DSL:1/0/-) DSL 0 --> 7 1 - - - - -  
- -  
H.323 RAS: H.323 RAS Messages debugging is on  
voip AAA: voip AAA debugging is on  
voip: voip cAPI function enter/exit debugging is on  
ivr: ivr state transitions debugging is on
```

Supposez qu'un appel est fait tandis qu'activé avec met au point affiché. C'est la sortie qui se produit avec un tel appel :

```
Raleigh5300A#show log
```

```
Syslog logging: enabled (0 messages dropped, 0 flushes, 0 overruns)  
Console logging: level debugging, 5422 messages logged  
Monitor logging: level debugging, 0 messages logged  
Buffer logging: level debugging, 5422 messages logged  
Trap logging: level informational, 230 message lines logged
```

```
Log Buffer (50000 bytes):
```

```
Mar 28 00:44:50.741: RASLib::ras_sendto: msg length 76  
from 172.16.120.2:49831 to 172.16.120.1:1719  
Mar 28 00:44:50.741: RASLib::RASSendRRQ: RRQ (seq# 12164)  
sent to 172.16.120.1  
Mar 28 00:44:50.745: RASLib::RASRecvData: successfully  
rcvd message of length 52 from 172.16.120.1:1719  
Mar 28 00:44:50.745: RASLib::RASRecvData: RCF (seq# 12164)  
rcvd from [172.16.120.1:1719] on sock [0x6179E6A4]  
Mar 28 00:45:18.433: ISDN Se0:23: RX <- SETUP pd = 8 callref = 0x02  
Mar 28 00:45:18.433: Bearer Capability i = 0x8090A2  
Mar 28 00:45:18.433: Channel ID i = 0xA98393  
Mar 28 00:45:18.433: Calling Party Number i = 0x2180,  
'9195552010', Plan:ISDN, Type:National  
Mar 28 00:45:18.433: Called Party Number i = 0xA1,  
'4085556400', Plan:ISDN, Type:National  
Mar 28 00:45:18.437: ISDN Se0:23: TX -> CALL_PROC pd = 8 callref = 0x8002  
Mar 28 00:45:18.437: Channel ID i = 0xA98393  
Mar 28 00:45:18.437: ISDN Se0:23: TX -> ALERTING pd = 8 callref = 0x8002  
Mar 28 00:45:18.437: cc_api_call_setup_ind (vdbPtr=0x61B9ADAC,  
callInfo={called=4085556400,  
calling=9195552010, fdest=0 peer_tag=1}, callID=0x61A088C4)  
Mar 28 00:45:18.441: start_h323_accounting:  
Mar 28 00:45:18.441: start_h323_ccapi_accounting: Error: Null userp  
Mar 28 00:45:18.441: cc_process_call_setup_ind (event=0x61BB59E8)  
handed call to app "clid_authen_collect"  
Mar 28 00:45:18.441: App clid_authen_collect: Handling callID 52  
Mar 28 00:45:18.441: callingNumber=9195552010, calledNumber=4085556400,  
redirectNumber=  
Mar 28 00:45:18.441: accountNumber=, finalDestFlag=0,  
guid=1acb.27d8.98f4.006b.0000.0000.2071.a5e8
```

```
Mar 28 00:45:18.441: peer_tag=1
Mar 28 00:45:18.441: ccCallHandoff (callID=0x34)
Mar 28 00:45:18.445: :/acceptCall/
Mar 28 00:45:18.445: Accepting CallID=52
Mar 28 00:45:18.445: ccCallSetupAck (callID=0x34)
Mar 28 00:45:18.445: ccCallProceeding (callID=0x34, prog_ind=0x0)
Mar 28 00:45:18.445: ccCallConnect (callID=0x34)
Mar 28 00:45:18.445: :/ani/
Mar 28 00:45:18.445: :/dnis/
Mar 28 00:45:18.445: :[authenticate]
Mar 28 00:45:18.445: authenticate
Mar 28 00:45:18.445:     account=9195552010
Mar 28 00:45:18.445:     password=4085556400
Mar 28 00:45:18.445: start_authentication service: ivr tcl authentication
Mar 28 00:45:18.445: AAA: parse name= idb type=-1 tty=-1
Mar 28 00:45:18.445: AAA/MEMORY: create_user (0x61EBED14) user='9195552010'
    ruser='' port='' rem_addr=''
    authen_type=ASCII service=LOGIN priv=0
Mar 28 00:45:18.445: AAA/AUTHEN/START (2776990538):
    port='' list='h323' action=LOGIN service=LOGIN
Mar 28 00:45:18.445: AAA/AUTHEN/START (2776990538): found list h323
Mar 28 00:45:18.445: AAA/AUTHEN/START (2776990538): Method=LOCAL
Mar 28 00:45:18.445: AAA/AUTHEN (2776990538): User not found, end of method list
Mar 28 00:45:18.445: AAA/AUTHEN (2776990538): status = FAIL
Mar 28 00:45:18.445: voip_authenticate: Authentication server ERROR: server MSG:
Mar 28 00:45:18.445: AAA/MEMORY: free_user (0x61EBED14)
    user='9195552010' ruser='' port=''
    rem_addr='' authen_type=ASCII service=LOGIN priv=0
Mar 28 00:45:18.449: ISDN Se0:23: TX -> CONNECT pd = 8 callref = 0x8002
Mar 28 00:45:18.449: cid(52) ta_get_event returning authentication failed
Mar 28 00:45:18.449: :[callID]
Mar 28 00:45:18.449: :/puts/
Mar 28 00:45:18.449: cid( 52) running state get_account
Mar 28 00:45:18.453: TA_PromptCmd. CallID=52

Mar 28 00:45:18.453: ccCallApp (callID=0x34)
Mar 28 00:45:18.453: prompt and collect app got callID 52
Mar 28 00:45:18.453:     Playing prompt enter_account.au
Mar 28 00:45:18.453:     Prompt interrupt enabled
Mar 28 00:45:18.453:     No return on play complete
Mar 28 00:45:18.453:     Not matching against dial plan
Mar 28 00:45:18.453:     Abort key is * Termination key is #
Mar 28 00:45:18.453:     Matching against 1 patterns.
Mar 28 00:45:18.453:     Pattern .+
Mar 28 00:45:18.453: ccCallSetContext (callID=0x34, context=0x61A3AAA4)
Mar 28 00:45:18.453: ms_create() Iniz ply_timer
Mar 28 00:45:18.453: ccAssociateStream (callID=0x34 coder=5
    vad=0 recordFunc=0x0 evQ=0x61BE4420)
Mar 28 00:45:18.453: cc_API_call_associated (vdbPtr=0x61B9ADAC,
    callID=0x34, disp=0)
Mar 28 00:45:18.453: ms_associateDone(): xmitFunc = playFunc 0x60B8B358
Mar 28 00:45:18.453: ms_associateDone(): CallID 52 First Buf Play
    at 6d07h of enter_account.au
Mar 28 00:45:18.453: ms_associateDone() 6d07h, Tstart(ply: iSndDly 1000, pSnce 0)
Mar 28 00:45:18.545: ISDN Se0:23: RX <- CONNECT_ACK pd = 8 callref = 0x02
Mar 28 00:45:18.545: ISDN Se0:23: CALL_PROGRESS: CALL_CONNECTED
    call id 0x1B, bchan -1, dsl 0
Mar 28 00:45:19.453: $ $ms_process() >>ms_start_play()
Mar 28 00:45:19.453: ms_start_play() 6d07h mgdTstop(ply)
Mar 28 00:45:20.241: cc_api_call_digit_begin (vdbPtr=0x61B9ADAC,
    callID=0x34, digit=1,
    flags=0x1, timestamp=0xDB1154A6, expiration=0x0)
Mar 28 00:45:20.245: pcapp CallID 52 event CC_EV_CALL_DIGIT_BEGIN ignored
```

```
Mar 28 00:45:20.353: cc_api_call_digit (vdbPtr=0x61B9ADAC,
    callID=0x34, digit=1, duration=160) digit=1
Mar 28 00:45:20.353: ms_stop_play() call 52 mgdTstop at 6d07h
Mar 28 00:45:20.353: ms_stop_play(): Play Stopped at 6d07h
Mar 28 00:45:20.353: ccDisassociateStream (callID=0x34)
Mar 28 00:45:20.521: cc_api_call_digit_begin (vdbPtr=0x61B9ADAC,
    callID=0x34, digit=2,
    flags=0x1, timestamp=0xDB1154A6, expiration=0x0)
Mar 28 00:45:20.525: pcapp CallID 52 event CC_EV_CALL_DIGIT_BEGIN ignored
Mar 28 00:45:20.593: cc_api_call_digit (vdbPtr=0x61B9ADAC,
    callID=0x34, digit=2, duration=120) digit=2
Mar 28 00:45:20.781: cc_api_call_digit_begin (vdbPtr=0x61B9ADAC,
    callID=0x34, digit=3,
    flags=0x1, timestamp=0xDB1154A6, expiration=0x0)
Mar 28 00:45:20.785: pcapp CallID 52 event CC_EV_CALL_DIGIT_BEGIN ignored
Mar 28 00:45:20.853: cc_api_call_digit (vdbPtr=0x61B9ADAC,
    callID=0x34, digit=3, duration=120) digit=3
Mar 28 00:45:21.101: cc_api_call_digit_begin (vdbPtr=0x61B9ADAC,
    callID=0x34, digit=4,
    flags=0x1, timestamp=0xDB1154A6, expiration=0x0)
Mar 28 00:45:21.105: pcapp CallID 52 event CC_EV_CALL_DIGIT_BEGIN ignored
Mar 28 00:45:21.193: cc_api_call_digit (vdbPtr=0x61B9ADAC,
    callID=0x34, digit=4, duration=140) digit=4
Mar 28 00:45:21.553: cc_api_call_digit_begin (vdbPtr=0x61B9ADAC,
    callID=0x34, digit=#,
    flags=0x1, timestamp=0xDB1154A6, expiration=0x0)
Mar 28 00:45:21.553: pcapp CallID 52 event CC_EV_CALL_DIGIT_BEGIN ignored
Mar 28 00:45:21.673: cc_api_call_digit (vdbPtr=0x61B9ADAC,
    callID=0x34, digit=#, duration=170) digit=#
Mar 28 00:45:21.673: pcapp CallID 52 returning PCAPP_MATCHED. string=1234
Mar 28 00:45:21.673: ccCallAppReturn (callID=0x34)
Mar 28 00:45:21.673: ms_delete() invoking ms_stop_play() for just in case...
Mar 28 00:45:21.673: ms_stop_play() call 52 mgdTstop at 6d07h
Mar 28 00:45:21.673: ms_delete(): mc_delete_dynamicS() mc_delete_read()
Mar 28 00:45:21.673: cid(52) ta_get_event returning collect success
Mar 28 00:45:21.677: :[callID]
Mar 28 00:45:21.677: :/puts/
Mar 28 00:45:21.677: cid( 52) running state get_pin
Mar 28 00:45:21.677: ta_PromptCmd. CallID=52

Mar 28 00:45:21.677: ccCallApp (callID=0x34)
Mar 28 00:45:21.681: prompt and collect app got callID 52
Mar 28 00:45:21.681:     Playing prompt enter_pin.au
Mar 28 00:45:21.681:     Prompt interrupt enabled
Mar 28 00:45:21.681:     No return on play complete
Mar 28 00:45:21.681:     Not matching against dial plan
Mar 28 00:45:21.681:     Abort key is *     Termination key is #
Mar 28 00:45:21.681:     Matching against 1 patterns.
Mar 28 00:45:21.681:     Pattern .+
Mar 28 00:45:21.681: ccCallSetContext (callID=0x34, context=0x61A986B0)
Mar 28 00:45:21.681: ms_create() Iniz ply_timer
Mar 28 00:45:21.681: ccAssociateStream (callID=0x34 coder=5 vad=0
    recordFunc=0x0 evQ=0x61BE4420)
Mar 28 00:45:21.681: cc_api_call_associated (vdbPtr=0x61B9ADAC,
    callID=0x34, disp=0)
Mar 28 00:45:21.681: ms_associateDone(): xmitFunc = playFunc 0x60B8B358
Mar 28 00:45:21.681: ms_associateDone(): CallID 52 First Buf
    Play at 6d07h of enter_pin.au
Mar 28 00:45:21.681: ms_associateDone() 6d07h, Tstart(ply:
    iSndDly 1000, pSnce 0)
Mar 28 00:45:22.681: $ $ms_process() >>ms_start_play()
Mar 28 00:45:22.681: ms_start_play() 6d07h mgdTstop(ply)
Mar 28 00:45:23.433: cc_api_call_digit_begin (vdbPtr=0x61B9ADAC, callID=0x34,
```

```
digit=5, flags=0x1, timestamp=0xDB1154A6, expiration=0x0)
Mar 28 00:45:23.433: pcapp CallID 52 event CC_EV_CALL_DIGIT_BEGIN ignored
Mar 28 00:45:23.533: cc_api_call_digit (vdbPtr=0x61B9ADAC,
callID=0x34, digit=5, duration=150) digit=5
Mar 28 00:45:23.533: ms_stop_play() call 52 mgdTstop at 6d07h
Mar 28 00:45:23.533: ms_stop_play(): Play Stopped at 6d07h
Mar 28 00:45:23.533: ccDisassociateStream (callID=0x34)
Mar 28 00:45:23.693: cc_api_call_digit_begin (vdbPtr=0x61B9ADAC,
callID=0x34, digit=6,
flags=0x1, timestamp=0xDB1154A6, expiration=0x0)
Mar 28 00:45:23.693: pcapp CallID 52 event CC_EV_CALL_DIGIT_BEGIN ignored
Mar 28 00:45:23.793: cc_api_call_digit (vdbPtr=0x61B9ADAC,
callID=0x34, digit=6, duration=150) digit=6
Mar 28 00:45:24.041: cc_api_call_digit_begin (vdbPtr=0x61B9ADAC,
callID=0x34, digit=7, flags=0x1,
timestamp=0xDB1154A6, expiration=0x0)
Mar 28 00:45:24.045: pcapp CallID 52 event CC_EV_CALL_DIGIT_BEGIN ignored
Mar 28 00:45:24.121: cc_api_call_digit (vdbPtr=0x61B9ADAC,
callID=0x34, digit=7, duration=130) digit=7
Mar 28 00:45:24.321: cc_api_call_digit_begin (vdbPtr=0x61B9ADAC,
callID=0x34, digit=8,
flags=0x1, timestamp=0xDB1154A6, expiration=0x0)
Mar 28 00:45:24.325: pcapp CallID 52 event CC_EV_CALL_DIGIT_BEGIN ignored
Mar 28 00:45:24.421: cc_api_call_digit (vdbPtr=0x61B9ADAC,
callID=0x34, digit=8, duration=150) digit=8
Mar 28 00:45:24.653: cc_api_call_digit_begin (vdbPtr=0x61B9ADAC,
callID=0x34, digit=#,
flags=0x1, timestamp=0xDB1154A6, expiration=0x0)
Mar 28 00:45:24.653: pcapp CallID 52 event CC_EV_CALL_DIGIT_BEGIN ignored
Mar 28 00:45:24.741: cc_api_call_digit (vdbPtr=0x61B9ADAC,
callID=0x34, digit=#, duration=140) digit=#
Mar 28 00:45:24.745: pcapp CallID 52 returning PCAPP_MATCHED. string=5678
Mar 28 00:45:24.745: ccCallAppReturn (callID=0x34)
Mar 28 00:45:24.745: ms_delete() invoking ms_stop_play() for just in case...
Mar 28 00:45:24.745: ms_stop_play() call 52 mgdTstop at 6d07h
Mar 28 00:45:24.745: ms_delete(): mc_delete_dynamicS() mc_delete_read()
Mar 28 00:45:24.745: cid(52) ta_get_event returning collect success
Mar 28 00:45:24.745: :[callID]
Mar 28 00:45:24.745: :/puts/
Mar 28 00:45:24.745: cid( 52) running state authenticate
Mar 28 00:45:24.749: :[authenticate]
Mar 28 00:45:24.749: authenticate
Mar 28 00:45:24.749:     account=1234
Mar 28 00:45:24.749:     password=5678
Mar 28 00:45:24.749: start_authentication service: ivr tcl authentication
Mar 28 00:45:24.749: AAA: parse name= idb type=-1 tty=-1
Mar 28 00:45:24.749: AAA/MEMORY: create_user (0x61B0354C) user='1234' ruser=''
port='' rem_addr='' authen_type=ASCII service=LOGIN priv=0
Mar 28 00:45:24.749: AAA/AUTHEN/START (3238629809): port=''
list='h323' action=LOGIN service=LOGIN
Mar 28 00:45:24.749: AAA/AUTHEN/START (3238629809): found list h323
Mar 28 00:45:24.749: AAA/AUTHEN/START (3238629809): Method=LOCAL
Mar 28 00:45:24.749: AAA/AUTHEN (3238629809): status = GETPASS
Mar 28 00:45:24.749: AAA/AUTHEN/CONT (3238629809): continue_login (user='1234')
Mar 28 00:45:24.749: AAA/AUTHEN (3238629809): status = GETPASS
Mar 28 00:45:24.749: AAA/AUTHEN/CONT (3238629809): Method=LOCAL
Mar 28 00:45:24.749: AAA/AUTHEN (3238629809): status = PASS
Mar 28 00:45:24.749: AAA/MEMORY: free_user (0x61B0354C) user='1234' ruser=''
port='' rem_addr='' authen_type=ASCII service=LOGIN priv=0
Mar 28 00:45:24.749: cid(52) ta_get_event returning authenticated
Mar 28 00:45:24.753: :[callID]
Mar 28 00:45:24.753: :/puts/
Mar 28 00:45:24.753: cid( 52) running state authen_pass
Mar 28 00:45:24.753: :/dnis/
```



```
Mar 28 00:45:24.753: :/did/
Mar 28 00:45:24.757: :[callID]
Mar 28 00:45:24.757: :/puts/
Mar 28 00:45:24.757: cid( 52) running state get_dest
Mar 28 00:45:24.757: ta_PromptCmd. CallID=52

Mar 28 00:45:24.757: ccCallApp (callID=0x34)
Mar 28 00:45:24.757: prompt and collect app got callID 52
Mar 28 00:45:24.757:     Playing prompt enter_destination.au
Mar 28 00:45:24.757:     Prompt interrupt enabled
Mar 28 00:45:24.757:     No return on play complete
Mar 28 00:45:24.757:     Matching against dial plan
Mar 28 00:45:24.757:     Abort key is *   Termination key is #
Mar 28 00:45:24.757:     Matching against 0 patterns.
Mar 28 00:45:24.757: ccCallSetContext (callID=0x34, context=0x61A3AAA4)
Mar 28 00:45:24.761: ms_create() Iniz ply_timer
Mar 28 00:45:24.761: ccAssociateStream (callID=0x34 coder=5 vad=0
    recordFunc=0x0 evQ=0x61BE4420)
Mar 28 00:45:24.761: cc_api_call_associated (vdbPtr=0x61B9ADAC,
    callID=0x34, disp=0)
Mar 28 00:45:24.761: ms_associateDone(): xmitFunc = playFunc 0x60B8B358
Mar 28 00:45:24.761: ms_associateDone(): CallID 52 First Buf Play
    at 6d07h of enter_destination.au
Mar 28 00:45:24.761: ms_associateDone() 6d07h, Tstart(ply: iSndDly 1000, pSnce 0)
Mar 28 00:45:25.761: $ $ms_process() >>ms_start_play()
Mar 28 00:45:25.761: ms_start_play() 6d07h mgdTstop(ply)
Mar 28 00:45:29.393: cc_api_call_digit_begin (vdbPtr=0x61B9ADAC,
    callID=0x34, digit=6,
    flags=0x1, timestamp=0xDB1154A6, expiration=0x0)
Mar 28 00:45:29.393: pcapp CallID 52 event CC_EV_CALL_DIGIT_BEGIN ignored
Mar 28 00:45:29.573: cc_api_call_digit (vdbPtr=0x61B9ADAC,
    callID=0x34, digit=6, duration=230) digit=6
Mar 28 00:45:29.573: ms_stop_play() call 52 mgdTstop at 6d07h
Mar 28 00:45:29.573: ms_stop_play(): Play Stopped at 6d07h
Mar 28 00:45:29.573: ccDisassociateStream (callID=0x34)
Mar 28 00:45:29.801: cc_api_call_digit_begin (vdbPtr=0x61B9ADAC,
    callID=0x34, digit=4,
    flags=0x1, timestamp=0xDB1154A6, expiration=0x0)
Mar 28 00:45:29.805: pcapp CallID 52 event CC_EV_CALL_DIGIT_BEGIN ignored
Mar 28 00:45:29.921: cc_api_call_digit (vdbPtr=0x61B9ADAC, callID=0x34,
    digit=4, duration=170) digit=4
Mar 28 00:45:30.181: cc_api_call_digit_begin (vdbPtr=0x61B9ADAC,
    callID=0x34, digit=0,
    flags=0x1, timestamp=0xDB1154A6, expiration=0x0)
Mar 28 00:45:30.185: pcapp CallID 52 event CC_EV_CALL_DIGIT_BEGIN ignored
Mar 28 00:45:30.281: cc_api_call_digit (vdbPtr=0x61B9ADAC, callID=0x34,
    digit=0, duration=150) digit=0
Mar 28 00:45:30.533: cc_api_call_digit_begin (vdbPtr=0x61B9ADAC,
    callID=0x34, digit=0,
    flags=0x1, timestamp=0xDB1154A6, expiration=0x0)
Mar 28 00:45:30.533: pcapp CallID 52 event CC_EV_CALL_DIGIT_BEGIN ignored
Mar 28 00:45:30.673: cc_api_call_digit (vdbPtr=0x61B9ADAC, callID=0x34,
    digit=0, duration=190) digit=0
Mar 28 00:45:30.673: pcapp CallID 52 returning PCAPP_MATCHED. string=6400
Mar 28 00:45:30.673: ccCallAppReturn (callID=0x34)
Mar 28 00:45:30.673: ms_delete() invoking ms_stop_play() for just in case...
Mar 28 00:45:30.673: ms_stop_play() call 52 mgdTstop at 6d07h
Mar 28 00:45:30.673: ms_delete(): mc_delete_dynamicS() mc_delete_read()
Mar 28 00:45:30.673: cid(52) ta_get_event returning collect success
Mar 28 00:45:30.677: :[callID]
Mar 28 00:45:30.677: :/puts/
Mar 28 00:45:30.677: cid( 52) running state place_call
Mar 28 00:45:30.677: :[placeCall]
```

Mar 28 00:45:30.677: Placing call for callID 52 to destination=6400
Mar 28 00:45:30.677: ccCallApp (callID=0x34)
Mar 28 00:45:30.681: placecall CallID 52 got event CC_EV_CALL_HANDOFF
Mar 28 00:45:30.681: ccCallSetContext (callID=0x34, context=0x61EBED14)
Mar 28 00:45:30.681: Matched peers(1)
Mar 28 00:45:30.681: placecall pc_setupPeer cid(52), destPat(4085556400), matched(10),
prefix(), peer(61C088AC)
Mar 28 00:45:30.681: ccCallSetupRequest (Inbound call = 0x34, outbound peer =2, dest=,
params=0x61A650F8 mode=0, *callID=0x61BC6EF0)
Mar 28 00:45:30.681: callingNumber=9195552010, calledNumber=4085556400, redirectNumber=
Mar 28 00:45:30.681: accountNumber=1234, finalDestFlag=0,
guid=lacb.27d8.98f4.006b.0000.0000.2071.a5e8
Mar 28 00:45:30.681: peer_tag=2
Mar 28 00:45:30.681: ccIFCallSetupRequest: (vdbPtr=0x6174EC64, dest=,
callParams={called=4085556400,
calling=9195552010, fdest=0, voice_peer_tag=2}, mode=0x0)
Mar 28 00:45:30.681: ccCallSetContext (callID=0x35, context=0x61C72B0C)
Mar 28 00:45:30.681: placecall cid(52) state change PC_CS_INIT to PC_CS_CALL_SETTING
Mar 28 00:45:30.681: RASLib::ras_sendto: msg length 115 from 172.16.120.2:49831
to 172.16.120.1:1719
Mar 28 00:45:30.685: RASLib::RASSendARQ: ARQ (seq# 12165) sent to 172.16.120.1
Mar 28 00:45:30.685: start_h323_accounting:
Mar 28 00:45:30.685: start_h323_ccapi_accounting: Error: Null userp
Mar 28 00:45:30.689: RASLib::RASRecvData: successfully rcvd message
of length 7 from 172.16.120.1:1719
Mar 28 00:45:30.689: RASLib::RASRecvData: RIP (seq# 12165) rcvd
from [172.16.120.1:1719] on sock[6179E6A4]
Mar 28 00:45:30.705: RASLib::RASRecvData: successfully rcvd message
of length 24 from 172.16.120.1:1719
Mar 28 00:45:30.705: RASLib::RASRecvData: ACF (seq# 12165) rcvd from
[172.16.120.1:1719] on sock [0x6179E6A4]
Mar 28 00:45:31.713: cc_api_call_alert(vdbPtr=0x6174EC64, callID=0x35,
prog_ind=0x8, sig_ind=0x1)
Mar 28 00:45:31.713: placecall CallID 53 got event CC_EV_CALL_ALERT
Mar 28 00:45:31.713: ccConferenceCreate (confID=0x61BC6F40, callID1=0x34,
callID2=0x35, tag=0x0)
Mar 28 00:45:31.713: cc_api_bridge_done (confID=0x14, srcIF=0x6174EC64, srcCallID=0x35,
dstCallID=0x34, disposition=0, tag=0x0)
Mar 28 00:45:31.713: placecall cid(52) state change PC_CS_CALL_SETTING to
PC_CS_CONFERENCING_ALERT
Mar 28 00:45:31.713: cc_api_bridge_done (confID=0x14, srcIF=0x61B9ADAC, srcCallID=0x34,
dstCallID=0x35, disposition=0, tag=0x0)
Mar 28 00:45:31.713: cc_api_caps_ind (dstVdbPtr=0x6174EC64, dstCallId=0x35,
srcCallId=0x34, caps={codec=0xEBF7, fax_rate=0xFF,
vad=0x3, modem=0x3 codec_bytes=48, signal_type=2})
Mar 28 00:45:31.717: placecall CallID 52 got event CC_EV_CONF_CREATE_DONE
Mar 28 00:45:31.717: placecall cid(52) state change PC_CS_CONFERENCING_ALERT
to PC_CS_CONFERENCE_ALERT
Mar 28 00:45:32.321: cc_api_caps_ind (dstVdbPtr=0x61B9ADAC, dstCallId=0x34,
srcCallId=0x35, caps={codec=0x4, fax_rate=0x2, vad=0x2, modem=0x1
codec_bytes=20, signal_type=0})
Mar 28 00:45:32.321: cc_api_caps_ack (dstVdbPtr=0x61B9ADAC, dstCallId=0x34,
srcCallId=0x35, caps={codec=0x4, fax_rate=0x2, vad=0x2, modem=0x1
codec_bytes=20, signal_type=0})
Mar 28 00:45:32.325: cc_api_caps_ack (dstVdbPtr=0x6174EC64, dstCallId=0x35,
srcCallId=0x34, caps={codec=0x4, fax_rate=0x2, vad=0x2, modem=0x1
codec_bytes=20, signal_type=0})
Mar 28 00:45:35.745: RASLib::ras_sendto: msg length 76 from 172.16.120.2:49831
to 172.16.120.1:1719
Mar 28 00:45:35.745: RASLib::RASSendRRQ: RRQ (seq# 12166) sent to 172.16.120.1
Mar 28 00:45:35.749: RASLib::RASRecvData: successfully rcvd message of
length 52 from 172.16.120.1:1719
Mar 28 00:45:35.749: RASLib::RASRecvData: RCF (seq# 12166) rcvd from
[172.16.120.1:1719] on sock [0x6179E6A4]

Mar 28 00:45:40.673: cc_api_call_digit (vdbPtr=0x61B9ADAC, callID=0x34,
digit=T, duration=0)
Mar 28 00:45:40.673: placecall CallID 52 got event CC_EV_CALL_DIGIT
Mar 28 00:45:43.845: cc_api_call_connected(vdbPtr=0x6174EC64, callID=0x35)
Mar 28 00:45:43.845: placecall CallID 53 got event CC_EV_CALL_CONNECTED
Mar 28 00:45:43.845: placecall CallID 52 returning PLACECALL_ACTIVE.
Mar 28 00:45:43.845: ccCallAppReturn (callID=0x34)
Mar 28 00:45:43.845: pCall(0x61B00C24), settlement_credit_time=0
Mar 28 00:45:43.845: ccCallSetContext (callID=0x35, context=0x61B00C24)
Mar 28 00:45:43.845: cid(52) ta_get_event returning active
Mar 28 00:45:43.845: :[callID]
Mar 28 00:45:43.845: :/puts/
Mar 28 00:45:43.845: cid(52) running state active
Mar 28 00:45:43.849: :/creditTimeLeft/
Mar 28 00:45:43.849: :[waitEvent]
Mar 28 00:45:43.849: Waiting Event for callID 52
Mar 28 00:45:51.269: cc_api_call_disconnected(vdbPtr=0x6174EC64, callID=0x35, cause=0x10)
Mar 28 00:45:51.273: ccConferenceDestroy (confID=0x14, tag=0x0)
Mar 28 00:45:51.273: cc_api_bridge_drop_done (confID=0x14, srcIF=0x6174EC64,
srcCallID=0x35, dstCallID=0x34, disposition=0 tag=0x0)
Mar 28 00:45:51.273: cc_api_bridge_drop_done (confID=0x14, srcIF=0x61B9ADAC,
srcCallID=0x34,
dstCallID=0x35, disposition=0 tag=0x0)
Mar 28 00:45:51.273: ccCallDisconnect (callID=0x35, cause=0x10 tag=0x0)
Mar 28 00:45:51.273: RASlib::ras_sendto: msg length 76 from 172.16.120.2:49831
to 172.16.120.1:1719
Mar 28 00:45:51.273: RASlib::RASSendDRQ: DRQ (seq# 12167) sent to 172.16.120.1
Mar 28 00:45:51.277: RASlib::RASRecvData: successfully rcvd message of length
3 from 172.16.120.1:1719
Mar 28 00:45:51.277: RASlib::RASRecvData: DCF (seq# 12167) rcvd from
[172.16.120.1:1719] on sock [0x6179E6A4]
Mar 28 00:45:51.277: stop_h323_ccapi_accounting: Error: Null userp
Mar 28 00:45:51.281: cc_api_call_disconnect_done(vdbPtr=0x6174EC64,
callID=0x35, disp=0, tag=0x0)
Mar 28 00:45:51.281: cid(53) outgoing disconnected
Mar 28 00:45:51.281: cid(52) ta_get_event returning outgoing disconnected
Mar 28 00:45:51.281: ta_WaitEventCmd(): ta_get_event(event [outgoing disconnected])
Mar 28 00:45:51.281: TCL script eval for callID 52 completed. code=OK
Mar 28 00:45:51.281: ccCallDisconnect (callID=0x34, cause=0x10 tag=0x0)
Mar 28 00:45:51.297: stop_h323_ccapi_accounting: Error: Null userp
Mar 28 00:45:51.297: cc_api_call_disconnect_done(vdbPtr=0x61B9ADAC,
callID=0x34, disp=0, tag=0x0)
Mar 28 00:45:51.305: %ISDN-6-DISCONNECT: Interface Serial0:18 disconnected
from 9195552010 , call lasted 32 seconds
Mar 28 00:45:51.305: ISDN Se0:23: TX -> DISCONNECT pd = 8 callref = 0x8002
Mar 28 00:45:51.305: Cause i = 0x8090 - Normal call clearing
Mar 28 00:45:51.353: ISDN Se0:23: RX <- RELEASE pd = 8 callref = 0x02
Mar 28 00:45:51.353: ISDN Se0:23: TX -> RELEASE_COMP pd = 8 callref = 0x8002
Mar 28 00:45:51.365: %LINK-3-UPDOWN: Interface Serial0:18, changed state to down
Mar 28 00:46:20.748: RASlib::ras_sendto: msg length 76 from 172.16.120.2:49831
to 172.16.120.1:1719
Mar 28 00:46:20.748: RASlib::RASSendRRQ: RRQ (seq# 12168) sent to 172.16.120.1
Mar 28 00:46:20.752: RASlib::RASRecvData: successfully rcvd message of
length 52 from 172.16.120.1:1719
Mar 28 00:46:20.752: RASlib::RASRecvData: RCF (seq# 12168) rcvd from
[172.16.120.1:1719] on sock [0x6179E6A4]

Raleigh5300A#

Raleigh5300A#

Raleigh5300A#show call active voice

GENERIC:

SetupTime=54456184 ms

Index=1

PeerAddress=9195552010
PeerSubAddress=
PeerId=1
PeerIfIndex=56
LogicalIfIndex=26
ConnectTime=54456185
CallDuration=00:00:44
CallState=4
CallOrigin=2
ChargedUnits=0
InfoType=2
TransmitPackets=1475
TransmitBytes=75244
ReceivePackets=318
ReceiveBytes=10176
TELE:
ConnectionId=[0x1ACB27D8 0x98F4006F 0x0 0x20755AB8]
TxDuration=29800 ms
VoiceTxDuration=6360 ms
FaxTxDuration=0 ms
CoderTypeRate=g729r8
NoiseLevel=-55
ACOMLevel=0
OutSignalLevel=-42
InSignalLevel=-56
InfoActivity=2
ERLLevel=15
SessionTarget=
ImgPages=0
GENERIC:
SetupTime=54457502 ms
Index=1
PeerAddress=4085556400
PeerSubAddress=
PeerId=2
PeerIfIndex=57
LogicalIfIndex=0
ConnectTime=54458807
CallDuration=00:00:18
CallState=4
CallOrigin=1
ChargedUnits=0
InfoType=2
TransmitPackets=318
TransmitBytes=6360
ReceivePackets=1121
ReceiveBytes=22420
VOIP:
ConnectionId[0x1ACB27D8 0x98F4006F 0x0 0x20755AB8]
RemoteIPAddress=172.16.110.2
RemoteUDPPort=17942
RoundTripDelay=2 ms
SelectedQoS=best-effort
tx_DtmfRelay=inband-voice
SessionProtocol=cisco
SessionTarget=ras
OnTimeRvPayout=15900
GapFillWithSilence=0 ms
GapFillWithPrediction=0 ms
GapFillWithInterpolation=0 ms
GapFillWithRedundancy=0 ms
HiWaterPayoutDelay=70 ms
LoWaterPayoutDelay=50 ms
ReceiveDelay=50 ms

LostPackets=0
EarlyPackets=0
LatePackets=0
VAD = enabled
CoderTypeRate=g729r8
CodecBytes=20
SignalingType=cas
Raleigh5300A#

Raleigh5300A#**show call active voice brief**

<ID>: <start>hs.<index> +<connect> pid:<peer_id> <dir> <addr> <state>
dur hh:mm:ss tx:<packets>/<bytes> rx:<packets>/<bytes> <state>
IP <ip>:<udp> rtt:<time>ms pl:<play>/<gap>ms lost:<lost>/<early>/<late>
delay:<last>/<min>/<max>ms <codec>
FR <protocol><y/n><y/n><y/n><on/off> [int dlci cid] vad: dtmf: seq:
sig: <codec> (payload size)
Tele <int>: tx:<tot>/<v>/<fax>ms <codec> noise:<l> acom:<l> i/o:<l>/<l> dBm

6F : 54456184hs.1 +1 pid:1 Answer 9195552010 active
dur 00:00:40 tx:1279/73076 rx:172/5504
Tele 0:D:54: tx:25890/3440/0ms g729r8 noise:-55 acom:0 i/o:-55/-41 dBm

6F : 54457502hs.1 +1305 pid:2 Originate 4085556400 active
dur 00:00:14 tx:172/3440 rx:925/18500
IP 172.16.110.2:17942 rtt:2ms pl:15900/0ms lost:0/0/0 delay:50/50/70ms g729r8

Sortie SanJose5300A

SanJose5300A#**show gateway**

Gateway SJ5300A@cisco.com is registered to Gatekeeper SJgk1

Alias list (CLI configured)
H323-ID SJ5300A@cisco.com
Alias list (last RCF)
H323-ID SJ5300A@cisco.com

H323 resource thresholding is Disabled

SanJose5300A#**show log**

Syslog logging: enabled (0 messages dropped, 0 flushes, 0 overruns)
Console logging: level debugging, 1787 messages logged
Monitor logging: level debugging, 0 messages logged
Buffer logging: level debugging, 1787 messages logged
Trap logging: level informational, 97 message lines logged

Log Buffer (50000 bytes):

Mar 28 00:45:25.585: RASLib::ras_sendto: msg length 74 from
172.16.110.2:52521 to 172.16.110.1:1719
Mar 28 00:45:25.585: RASLib::RASSendRRQ: RRQ (seq# 12137) sent to 172.16.110.1
Mar 28 00:45:25.589: RASLib::RASRecvData: successfully rcvd message of
length 52 from 172.16.110.1:1719
Mar 28 00:45:25.589: RASLib::RASRecvData: RCF (seq# 12137) rcvd from
[172.16.110.1:1719] on sock [0x61752218]
Mar 28 00:45:30.705: RASLib::ras_sendto: msg length 122 from
172.16.110.2:52521 to 172.16.110.1:1719
Mar 28 00:45:30.705: RASLib::RASSendARQ: ARQ (seq# 12138) sent to 172.16.110.1

Mar 28 00:45:30.709: RASLib::RASRecvData: successfully rcvd message
of length 24 from 172.16.110.1:1719

Mar 28 00:45:30.713: RASLib::RASRecvData: ACF (seq# 12138) rcvd from
[172.16.110.1:1719] on sock [0x61752218]

Mar 28 00:45:30.713: cc_api_call_setup_ind (vdbPtr=0x616F8D2C,
callInfo={called=408#4085556400,
calling=9195552010, fdest=1 peer_tag=2}, callID=0x6199B54C)

Mar 28 00:45:30.713: cc_process_call_setup_ind (event=0x619B2D6C) handed
call to app "SESSION"

Mar 28 00:45:30.713: sess_appl: ev(23=CC_EV_CALL_SETUP_IND), cid(39), disp(0)

Mar 28 00:45:30.713: ccCallSetContext (callID=0x27, context=0x61A60F64)

Mar 28 00:45:30.713: ssaCallSetupInd finalDest cllng(9195552010),
clled(408#4085556400)

Mar 28 00:45:30.713: ssaSetupPeer cid(39) peer list: tag(1) called
number (408#4085556400)

Mar 28 00:45:30.713: ssaSetupPeer cid(39), destPat(408#4085556400),
matched(11), prefix(6), peer(61A03B88)

Mar 28 00:45:30.713: ccCallProceeding (callID=0x27, prog_ind=0x0)

Mar 28 00:45:30.713: ccCallSetupRequest (Inbound call = 0x27, outbound peer =1, dest=,
params=0x61A60F78 mode=0, *callID=0x619BB9F0)

Mar 28 00:45:30.713: callingNumber=9195552010, calledNumber=408#4085556400,
redirectNumber=

Mar 28 00:45:30.713: accountNumber=, finalDestFlag=1,
guid=1acb.27d8.98f4.006b.0000.0000.2071.a5e8

Mar 28 00:45:30.713: peer_tag=1

Mar 28 00:45:30.713: ccIFCallSetupRequest: (vdbPtr=0x619AC884, dest=,
callParams={called=408#4085556400,
calling=9195552010, fdest=1, voice_peer_tag=1}, mode=0x0)

Mar 28 00:45:30.717: ccCallSetContext (callID=0x28, context=0x6194F3AC)

Mar 28 00:45:30.717: cc_api_call_proceeding(vdbPtr=0x619AC884, callID=0x28,
prog_ind=0x0)

Mar 28 00:45:30.717: sess_appl: ev(20=CC_EV_CALL_PROCEEDING), cid(40), disp(0)

Mar 28 00:45:30.717: ssaTraceSct: cid(40)st(1)oldst(0)cfid(-1)csz(0)
in(0)fDest(0)-cid2(39)st2(1)oldst2(0)

Mar 28 00:45:30.717: ssaIgnore cid(40), st(1),oldst(1), ev(20)

Mar 28 00:45:31.701: cc_api_call_alert(vdbPtr=0x619AC884, callID=0x28,
prog_ind=0x8, sig_ind=0x1)

Mar 28 00:45:31.701: sess_appl: ev(7=CC_EV_CALL_ALERT), cid(40), disp(0)

Mar 28 00:45:31.701: ssaTraceSct: cid(40)st(1)oldst(1)cfid(-1)csz(0)
in(0)fDest(0)-cid2(39)st2(1)oldst2(0)

Mar 28 00:45:31.701: ccCallAlert (callID=0x27, prog_ind=0x8, sig_ind=0x1)

Mar 28 00:45:31.701: ccConferenceCreate (confID=0x619BBA38, callID1=0x27,
callID2=0x28, tag=0x0)

Mar 28 00:45:31.701: cc_api_bridge_done (confID=0x14, srcIF=0x616F8D2C, srcCallID=0x27,
dstCallID=0x28, disposition=0, tag=0x0)

Mar 28 00:45:31.705: cc_api_bridge_done (confID=0x14, srcIF=0x619AC884, srcCallID=0x28,
dstCallID=0x27, disposition=0, tag=0x0)

Mar 28 00:45:31.705: cc_api_caps_ind (dstVdbPtr=0x616F8D2C, dstCallId=0x27,
srcCallId=0x28,caps={codec=0xEBF7, fax_rate=0xFF,
vad=0x3, modem=0x3 codec_bytes=1637472312, signal_type=2})

Mar 28 00:45:31.705: sess_appl: ev(28=CC_EV_CONF_CREATE_DONE), cid(39), disp(0)

Mar 28 00:45:31.705: ssaTraceSct: cid(39)st(3)oldst(0)cfid(20)csz(0)
in(1)fDest(1)-cid2(40)st2(3)oldst2(1)

Mar 28 00:45:32.517: cc_api_caps_ind (dstVdbPtr=0x619AC884, dstCallId=0x28,
srcCallId=0x27,caps={codec=0x4, fax_rate=0x2, vad=0x2, modem=0x1
codec_bytes=20, signal_type=0})

Mar 28 00:45:32.517: cc_api_caps_ack (dstVdbPtr=0x619AC884, dstCallId=0x28,
srcCallId=0x27, caps={codec=0x4, fax_rate=0x2, vad=0x2, modem=0x1
codec_bytes=20, signal_type=0})

Mar 28 00:45:32.521: cc_api_caps_ack (dstVdbPtr=0x616F8D2C, dstCallId=0x27,
srcCallId=0x28,caps={codec=0x4, fax_rate=0x2, vad=0x2, modem=0x1
codec_bytes=20, signal_type=0})

Mar 28 00:45:43.834: cc_api_call_connected(vdbPtr=0x619AC884, callID=0x28)

Mar 28 00:45:43.834: sess_appl: ev(8=CC_EV_CALL_CONNECTED), cid(40), disp(0)

Mar 28 00:45:43.834: ssaTraceSct: cid(40)st(4)oldst(1)cfid(20)csize(0)
in(0)fDest(0)-cid2(39)st2(4)oldst2(3)
Mar 28 00:45:43.834: ccCallConnect (callID=0x27)
Mar 28 00:45:43.834: ssaFlushPeerTagQueue cid(39) peer list: (empty)
Mar 28 00:45:51.258: cc_api_call_disconnected(vdbPtr=0x619AC884,
callID=0x28, cause=0x10)
Mar 28 00:45:51.258: sess_appl: ev(12=CC_EV_CALL_DISCONNECTED), cid(40), disp(0)
Mar 28 00:45:51.258: ssaTraceSct: cid(40)st(5)oldst(4)cfid(20)csize(0)
in(0)fDest(0)-cid2(39)st2(5)oldst2(3)
Mar 28 00:45:51.258: ssa: Disconnected cid(40) state(5) cause(0x10)
Mar 28 00:45:51.258: ccConferenceDestroy (confID=0x14, tag=0x0)
Mar 28 00:45:51.258: cc_api_bridge_drop_done (confID=0x14, srcIF=0x616F8D2C,
srcCallID=0x27, dstCallID=0x28, disposition=0 tag=0x0)
Mar 28 00:45:51.258: cc_api_bridge_drop_done (confID=0x14, srcIF=0x619AC884,
srcCallID=0x28, dstCallID=0x27, disposition=0 tag=0x0)
Mar 28 00:45:51.258: sess_appl: ev(29=CC_EV_CONF_DESTROY_DONE), cid(39), disp(0)
Mar 28 00:45:51.258: ssaTraceSct: cid(39)st(6)oldst(3)cfid(20)csize(0)
in(1)fDest(1)-cid2(40)st2(6)oldst2(5)
Mar 28 00:45:51.258: ccCallDisconnect (callID=0x27, cause=0x10 tag=0x0)
Mar 28 00:45:51.258: ccCallDisconnect (callID=0x28, cause=0x10 tag=0x0)
Mar 28 00:45:51.262: RASLib::ras_sendto: msg length 76 from 172.16.110.2:52521
to 172.16.110.1:1719
Mar 28 00:45:51.262: RASLib::RASSendDRQ: DRQ (seq# 12139) sent to 172.16.110.1
Mar 28 00:45:51.266: RASLib::RASRecvData: successfully rcvd message of
length 3 from 172.16.110.1:1719
Mar 28 00:45:51.266: RASLib::RASRecvData: DCF (seq# 12139) rcvd from
[172.16.110.1:1719] on sock [0x61752218]
Mar 28 00:45:51.266: cc_api_call_disconnect_done(vdbPtr=0x0,
callID=0x27, disp=0, tag=0x0)
Mar 28 00:45:51.270: sess_appl: ev(13=CC_EV_CALL_DISCONNECT_DONE), cid(39), disp(0)
Mar 28 00:45:51.270: ssaTraceSct: cid(39)st(7)oldst(6)cfid(-1)csize(0)
in(1)fDest(1)-cid2(40)st2(7)oldst2(5)
Mar 28 00:45:51.278: cc_api_call_disconnect_done(vdbPtr=0x619AC884,
callID=0x28, disp=0, tag=0x61726DDC)
Mar 28 00:45:51.278: sess_appl: ev(13=CC_EV_CALL_DISCONNECT_DONE), cid(40), disp(0)
Mar 28 00:45:51.278: ssaTraceSct: cid(40)st(7)oldst(5)cfid(-1)csize(1)in(0)fDest(0)
Mar 28 00:46:10.590: RASLib::ras_sendto: msg length 74 from 172.16.110.2:52521
to 172.16.110.1:1719
Mar 28 00:46:10.590: RASLib::RASSendRRQ: RRQ (seq# 12140) sent to 172.16.110.1
Mar 28 00:46:10.594: RASLib::RASRecvData: successfully rcvd message of
length 52 from 172.16.110.1:1719
Mar 28 00:46:10.594: RASLib::RASRecvData: RCF (seq# 12140) rcvd from
[172.16.110.1:1719] on sock [0x61752218]
Mar 28 00:46:55.595: RASLib::ras_sendto: msg length 74 from
172.16.110.2:52521 to 172.16.110.1:1719
Mar 28 00:46:55.595: RASLib::RASSendRRQ: RRQ (seq# 12141) sent to 172.16.110.1
Mar 28 00:46:55.599: RASLib::RASRecvData: successfully rcvd
message of length 52 from 172.16.110.1:1719
Mar 28 00:46:55.599: RASLib::RASRecvData: RCF (seq# 12141) rcvd
from [172.16.110.1:1719] on sock [0x61752218]
Mar 28 00:47:40.600: RASLib::ras_sendto: msg length 74 from
172.16.110.2:52521 to 172.16.110.1:1719
Mar 28 00:47:40.600: RASLib::RASSendRRQ: RRQ (seq# 12142) sent to 172.16.110.1
Mar 28 00:47:40.604: RASLib::RASRecvData: successfully rcvd
message of length 52 from 172.16.110.1:1719
Mar 28 00:47:40.604: RASLib::RASRecvData: RCF (seq# 12142) rcvd
from [172.16.110.1:1719] on sock [0x61752218]
Mar 28 00:48:25.604: RASLib::ras_sendto: msg length 74 from 172.16.110.2:52521
to 172.16.110.1:1719
Mar 28 00:48:25.604: RASLib::RASSendRRQ: RRQ (seq# 12143) sent to 172.16.110.1
Mar 28 00:48:25.608: RASLib::RASRecvData: successfully rcvd message
of length 52 from 172.16.110.1:1719
Mar 28 00:48:25.608: RASLib::RASRecvData: RCF (seq# 12143) rcvd from
[172.16.110.1:1719] on sock [0x61752218]

SanJose5300A#
SanJose5300A#

SanJose5300A#

SanJose5300A#**show call active voice brief**

```
<ID>: <start>hs.<index> +<connect> pid:<peer_id> <dir> <addr> <state>
dur hh:mm:ss tx:<packets>/<bytes> rx:<packets>/<bytes> <state>
IP <ip>:<udp> rtt:<time>ms pl:<play>/<gap>ms lost:<lost>/<early>/<late>
delay:<last>/<min>/<max>ms <codec>
FR <protocol><y/n><y/n><y/n><on/off> [int dlci cid] vad: dtmf: seq:
sig: <codec> (payload size)
Tele <int>: tx:<tot>/<v>/<fax>ms <codec> noise:<l> acom:<l> i/o:<l>/<l> dBm
```

```
6F : 54422877hs.1 +1301 pid:2 Answer 9195552010 active
dur 00:00:38 tx:2122/42440 rx:836/16720
IP 172.16.120.2:16938 rtt:2ms pl:16720/0ms lost:0/0/0 delay:30/30/70ms g729r8
```

```
6F : 54422895hs.1 +1283 pid:1 Originate 408#4085556400 active
dur 00:00:38 tx:836/-8996 rx:2143/68576
Tele 0:1 (42): tx:50050/42860/0ms g729r8 noise:-66 acom:0 i/o:-40/-71 dBm
```

SanJose5300A#**show call actvice voice**

```
GENERIC:
SetupTime=54422877 ms
Index=1
PeerAddress=9195552010
PeerSubAddress=
PeerId=2
PeerIfIndex=17
LogicalIfIndex=0
ConnectTime=54424178
CallDuration=00:00:44
CallState=4
CallOrigin=2
ChargedUnits=0
InfoType=2
TransmitPackets=2414
TransmitBytes=48280
ReceivePackets=836
ReceiveBytes=16720
VOIP:
ConnectionId[0x1ACB27D8 0x98F4006F 0x0 0x20755AB8]
RemoteIPAddress=172.16.120.2
RemoteUDPPort=16938
RoundTripDelay=2 ms
SelectedQoS=best-effort
tx_DtmfRelay=inband-voice
SessionProtocol=cisco
SessionTarget=
OnTimeRvPayout=16720
GapFillWithSilence=0 ms
GapFillWithPrediction=0 ms
GapFillWithInterpolation=0 ms
GapFillWithRedundancy=0 ms
HiWaterPayoutDelay=70 ms
LoWaterPayoutDelay=30 ms
ReceiveDelay=30 ms
LostPackets=0
EarlyPackets=0
LatePackets=0
VAD = enabled
```


CoderTypeRate=g729r8
 CodecBytes=20
 SignalingType=cas
 GENERIC:
 SetupTime=54422895 ms
 Index=1
 PeerAddress=408#4085556400
 PeerSubAddress=
 PeerId=1
 PeerIfIndex=16
 LogicalIfIndex=13
 ConnectTime=54424178
 CallDuration=00:00:44
 CallState=4
 CallOrigin=1
 ChargedUnits=0
 InfoType=2
 TransmitPackets=836
 TransmitBytes=-12488
 ReceivePackets=2434
 ReceiveBytes=77888
 TELE:
 ConnectionId=[0x1ACB27D8 0x98F4006F 0x0 0x20755AB8]
 TxDuration=55880 ms
 VoiceTxDuration=48690 ms
 FaxTxDuration=0 ms
 CoderTypeRate=g729r8
 NoiseLevel=-66
 ACOMLevel=0
 OutSignalLevel=-70
 InSignalLevel=-42
 InfoActivity=2
 ERLLevel=15
 SessionTarget=
 ImgPages=0
 SanJose5300A#

Sortie Raleigh3600A

Raleigh3640A#**show debug**

H.323 RAS:

H.323 RAS Messages debugging is on

Raleigh3640A#und all

Raleigh3640A#**show gatekeeper endpoint**

GATEKEEPER ENDPOINT REGISTRATION
 =====

CallSignalAddr	Port	RASSignalAddr	Port	Zone Name	Type	F
172.16.120.2	1720	172.16.120.2	49831	RALgk1	VOIP-GW	

H323-ID: RAL5300A@cisco.com

Total number of active registrations = 1

Raleigh3640A#**show gatekeeper gw-type-prefix**

GATEWAY TYPE PREFIX TABLE
 =====

Prefix: 408#*

Prefix: 919#*

Zone RALgk1 master gateway list:

172.16.120.2:1720 RAL5300A

Raleigh3640A#show log

Syslog logging: enabled (0 messages dropped, 0 flushes, 0 overruns)
Console logging: level debugging, 277 messages logged
Monitor logging: level debugging, 0 messages logged
Buffer logging: level debugging, 277 messages logged
Trap logging: level informational, 107 message lines logged

Log Buffer (50000 bytes):

Mar 28 00:44:50.742: RASLib::RASRecvData: successfully rcvd
message of length 76 from 172.16.120.2:49831
Mar 28 00:44:50.742: RASLib::RASRecvData: RRQ (seq# 12164)
rcvd from [172.16.120.2:49831] on sock [0x60F2F9A0]
Mar 28 00:44:50.746: RASLib::ras_sendto: msg length 52
from 172.16.120.1:1719 to 172.16.120.2:49831
Mar 28 00:44:50.746: RASLib::RASSendRCF: RCF (seq# 12164)
sent to 172.16.120.2
Mar 28 00:45:30.682: RASLib::RASRecvData: successfully
rcvd message of length 115 from 172.16.120.2:49831
Mar 28 00:45:30.686: RASLib::RASRecvData: ARQ (seq# 12165)
rcvd from [172.16.120.2:49831] on sock [0x60F2F9A0]
RASLib::parse_arq_nonstd: ARQ Nonstd
decode succeeded, remlen = 0
Mar 28 00:45:30.686: RASLib::ras_sendto: msg length 7 from
172.16.120.1:1719 to 172.16.120.2:49831
Mar 28 00:45:30.686: RASLib::RASSendRIP: RIP (seq# 12165) sent to 172.16.120.2
Mar 28 00:45:30.686: RASLib::RAS_WK_TInit: ipsock [0x60F0ED1C] setup successful
Mar 28 00:45:30.690: RASLib::ras_sendto: msg length 79
from 172.16.120.1:55415 to 172.16.110.1:1719
Mar 28 00:45:30.690: RASLib::RASSendLRQ: LRQ (seq# 28) sent to 172.16.110.1
Mar 28 00:45:30.698: RASLib::RASRecvData: successfully
rcvd message of length 128 from 172.16.110.1:1719
Mar 28 00:45:30.698: RASLib::RASRecvData: LCF (seq# 28)
rcvd from [172.16.110.1:1719] on sock [0x60F0ED1C]
RASLib::parse_lcf_nonstd: LCF Nonstd
decode succeeded, remlen = 0
Mar 28 00:45:30.702: RASLib::ras_sendto: msg length 24 from
172.16.120.1:1719 to 172.16.120.2:49831
Mar 28 00:45:30.702: RASLib::RASSendACF: ACF (seq# 12165) sent to 172.16.120.2
Mar 28 00:45:35.746: RASLib::RASRecvData: successfully rcvd message of
length 76 from 172.16.120.2:49831
Mar 28 00:45:35.746: RASLib::RASRecvData: RRQ (seq# 12166) rcvd
from [172.16.120.2:49831] on sock [0x60F2F9A0]
Mar 28 00:45:35.750: RASLib::ras_sendto: msg length 52 from
172.16.120.1:1719 to 172.16.120.2:49831
Mar 28 00:45:35.750: RASLib::RASSendRCF: RCF (seq# 12166) sent to 172.16.120.2
Mar 28 00:45:51.274: RASLib::RASRecvData: successfully rcvd
message of length 76 from 172.16.120.2:49831
Mar 28 00:45:51.274: RASLib::RASRecvData: DRQ (seq# 12167)
rcvd from [172.16.120.2:49831] on sock [0x60F2F9A0]
Mar 28 00:45:51.274: RASLib::ras_sendto: msg length 3
from 172.16.120.1:1719 to 172.16.120.2:49831
Mar 28 00:45:51.278: RASLib::RASSendDCF: DCF (seq# 12167)
sent to 172.16.120.2
Mar 28 00:46:20.750: RASLib::RASRecvData: successfully
rcvd message of length 76 from 172.16.120.2:49831
Mar 28 00:46:20.750: RASLib::RASRecvData: RRQ (seq# 12168)
rcvd from [172.16.120.2:49831] on sock [0x60F2F9A0]
Mar 28 00:46:20.750: RASLib::ras_sendto: msg length 52 from
172.16.120.1:1719 to 172.16.120.2:49831
Mar 28 00:46:20.754: RASLib::RASSendRCF: RCF (seq# 12168)

```

                sent to 172.16.120.2
Mar 28 00:47:05.750: RASLib::RASRecvData: successfully
                    rcvd message of length 76 from 172.16.120.2:49831
Mar 28 00:47:05.754: RASLib::RASRecvData: RRQ (seq# 12169)
                    rcvd from [172.16.120.2:49831] on sock [0x60F2F9A0]
Mar 28 00:47:05.754: RASLib::ras_sendto: msg length 52
                    from 172.16.120.1:1719 to 172.16.120.2:49831
Mar 28 00:47:05.758: RASLib::RASSendRCF: RCF (seq# 12169)
                    sent to 172.16.120.2
Mar 28 00:47:50.754: RASLib::RASRecvData: successfully
                    rcvd message of length 76 from 172.16.120.2:49831
Mar 28 00:47:50.758: RASLib::RASRecvData: RRQ (seq# 12170)
                    rcvd from [172.16.120.2:49831] on sock [0x60F2F9A0]
Mar 28 00:47:50.758: RASLib::ras_sendto: msg length 52
                    from 172.16.120.1:1719 to 172.16.120.2:49831
Mar 28 00:47:50.758: RASLib::RASSendRCF: RCF (seq# 12170) sent to 172.16.120.2
Raleigh3640A#

```

Raleigh3640A#

Raleigh3640A#**show gatekeeper call**

Total number of active calls = 1.

GATEKEEPER CALL INFO

=====

LocalCallID	Age(secs)	BW				
24-6872	45	64(Kbps)				
Endpt(s): Alias	E.164Addr	CallSignalAddr	Port	RASSignalAddr	Port	
src EP: RAL5300A	9195552010	172.16.120.2	1720	172.16.120.2	49831	
dst EP:	408#408555640	172.16.110.2	1720	172.16.110.2	1720	

Raleigh3640A#

Sortie SanJose3640A

SanJose3640A#**show debug**

H.323 RAS:

H.323 RAS Messages debugging is on

SanJose3640A#**show gatekeeper endpoint**

GATEKEEPER ENDPOINT REGISTRATION

=====

CallSignalAddr	Port	RASSignalAddr	Port	Zone Name	Type	F
172.16.110.2	1720	172.16.110.2	52521	SJgk1	VOIP-GW	

H323-ID: SJ5300A@cisco.com

Total number of active registrations = 1

SanJose3640A#**show gatekeeper gw-type-prefix**

GATEWAY TYPE PREFIX TABLE

=====

Prefix: 919#*

Prefix: 408#*

Zone SJgk1 master gateway list:

172.16.110.2:1720 SJ5300A

SanJose3640A#**show log**

Syslog logging: enabled (0 messages dropped, 0 flushes, 0 overruns)

Console logging: level debugging, 1301 messages logged

Monitor logging: level debugging, 0 messages logged

Buffer logging: level debugging, 1293 messages logged
Trap logging: level informational, 103 message lines logged

Log Buffer (50000 bytes):

```
Mar 28 00:45:25.592: RASLib::RASRecvData: successfully rcvd
message of length 74 from 172.16.110.2:52521
Mar 28 00:45:25.592: RASLib::RASRecvData: RRQ (seq# 12137) rcvd
from [172.16.110.2:52521] on sock [0x60FE9B04]
Mar 28 00:45:25.596: RASLib::ras_sendto: msg length 52 from
172.16.110.1:1719 to 172.16.110.2:52521
Mar 28 00:45:25.596: RASLib::RASSendRCF: RCF (seq# 12137) sent to 172.16.110.2
Mar 28 00:45:30.692: RASLib::RASRecvData: successfully rcvd message
of length 79 from 172.16.120.1:55415
Mar 28 00:45:30.692: RASLib::RASRecvData: LRQ (seq# 28) rcvd from
[172.16.120.1:55415] on sock [0x60FE9B04]
RASLib::parse_lrq_nonstd: LRQ Nonstd decode succeeded, remlen = 0
Mar 28 00:45:30.696: RASLib::ras_sendto: msg length 128 from
172.16.110.1:1719 to 172.16.120.1:55415
Mar 28 00:45:30.696: RASLib::RASSendLCF: LCF (seq# 28) sent to 172.16.120.1
Mar 28 00:45:30.712: RASLib::RASRecvData: successfully rcvd message
of length 122 from 172.16.110.2:52521
Mar 28 00:45:30.712: RASLib::RASRecvData: ARQ (seq# 12138) rcvd from
[172.16.110.2:52521] on sock [0x60FE9B04]
RASLib::parse_arq_nonstd: ARQ Nonstd decode succeeded, remlen = 0
Mar 28 00:45:30.716: RASLib::ras_sendto: msg length 24 from 172.16.110.1:1719
to 172.16.110.2:52521
Mar 28 00:45:30.716: RASLib::RASSendACF: ACF (seq# 12138) sent to 172.16.110.2
Mar 28 00:45:51.268: RASLib::RASRecvData: successfully rcvd message
of length 76 from 172.16.110.2:52521
Mar 28 00:45:51.268: RASLib::RASRecvData: DRQ (seq# 12139) rcvd
from [172.16.110.2:52521] on sock [0x60FE9B04]
Mar 28 00:45:51.268: RASLib::ras_sendto: msg length 3 from
172.16.110.1:1719 to 172.16.110.2:52521
Mar 28 00:45:51.268: RASLib::RASSendDCF: DCF (seq# 12139) sent to 172.16.110.2
Mar 28 00:46:10.596: RASLib::RASRecvData: successfully rcvd message of
length 74 from 172.16.110.2:52521
Mar 28 00:46:10.596: RASLib::RASRecvData: RRQ (seq# 12140) rcvd
from [172.16.110.2:52521] on sock [0x60FE9B04]
Mar 28 00:46:10.600: RASLib::ras_sendto: msg length 52 from 172.16.110.1:1719
to 172.16.110.2:52521
Mar 28 00:46:10.600: RASLib::RASSendRCF: RCF (seq# 12140) sent to 172.16.110.2
Mar 28 00:46:55.600: RASLib::RASRecvData: successfully rcvd message of
length 74 from 172.16.110.2:52521
Mar 28 00:46:55.600: RASLib::RASRecvData: RRQ (seq# 12141) rcvd from
[172.16.110.2:52521] on sock [0x60FE9B04]
Mar 28 00:46:55.604: RASLib::ras_sendto: msg length 52 from 172.16.110.1:1719
to 172.16.110.2:52521
Mar 28 00:46:55.604: RASLib::RASSendRCF: RCF (seq# 12141) sent to 172.16.110.2
Mar 28 00:47:40.604: RASLib::RASRecvData: successfully rcvd message of
length 74 from 172.16.110.2:52521
Mar 28 00:47:40.608: RASLib::RASRecvData: RRQ (seq# 12142) rcvd from
[172.16.110.2:52521] on sock [0x60FE9B04]
Mar 28 00:47:40.608: RASLib::ras_sendto: msg length 52 from 172.16.110.1:1719
to 172.16.110.2:52521
Mar 28 00:47:40.608: RASLib::RASSendRCF: RCF (seq# 12142) sent to 172.16.110.2
Mar 28 00:48:25.608: RASLib::RASRecvData: successfully rcvd message of
length 74 from 172.16.110.2:52521
Mar 28 00:48:25.612: RASLib::RASRecvData: RRQ (seq# 12143) rcvd from
[172.16.110.2:52521] on sock [0x60FE9B04]
Mar 28 00:48:25.612: RASLib::ras_sendto: msg length 52 from 172.16.110.1:1719
to 172.16.110.2:52521
```

Mar 28 00:48:25.612: RASLib::RASSendRCF: RCF (seq# 12143) sent to 172.16.110.2
SanJose3640A#

SanJose3640A#

SanJose3640A#**show gatekeeper calls**

Total number of active calls = 1.

GATEKEEPER CALL INFO

=====

LocalCallID	Age(secs)	BW				
21-6872	63	64(Kbps)				
Endpt(s): Alias	E.164Addr	CallSignalAddr	Port	RASSignalAddr	Port	
src EP:	9195552010					
dst EP: SJ5300A	408#408555640	172.16.110.2	1720	172.16.110.2	52521	

Dépanner

Cette section fournit les informations pour dépanner votre configuration.

Dépannage des commandes

L'[Outil Interpréteur de sortie](#) (clients [enregistrés](#) uniquement) (OIT) prend en charge certaines commandes **show**. Utilisez l'OIT pour afficher une analyse de la sortie de la commande **show**.

Remarque: Reportez-vous à [Informations importantes sur les commandes de débogage](#) avant d'émettre des commandes **debug**.

- [debug voip aaa](#) - Permet à des messages d'élimination des imperfections pour que l'AAA de passerelle soit sorti à la console système.
- [debug isdn q931](#) - Affiche des informations au sujet de l'établissement d'appel et du démontage de la connexion réseau RNIS (couche 3) entre le routeur local (côté utilisateur) et le réseau.
- [debug voip ccapi inout](#) - Débugge l'API de contrôle d'appel.
- [debug voip ivr](#) - Débugge l'application IVR.
- [debug ras](#) - Affiche les types et l'adressage de messages de Protocol d'enregistrement, d'admission et d'état (RAS) envoyés et reçus.

Informations connexes

- [Le guide du programmeur de version 1.0 TCL RVI API](#)
- [Configurer la réponse vocale interactive pour des plates-formes d'accès de Cisco](#)
- [Améliorations de Sécurité et de comptabilité de passerelle H.323 de Cisco](#)
- [Assistance technique concernant la technologie vocale](#)
- [Assistance concernant les produits vocaux et de communications unifiées](#)
- [Dépannage des problèmes de téléphonie IP Cisco](#)
- [Support et documentation techniques - Cisco Systems](#)