

# Configurez les medias sociaux ISE 2.3 Facebook pour des portails d'invité

## Contenu

[Introduction](#)

[Conditions préalables](#)

[Conditions requises](#)

[Composants utilisés](#)

[Diagramme du réseau](#)

[Configuration](#)

1. [Configurez l'app de Facebook](#)
2. [Intégrez ISE avec l'app de Facebook](#)
3. [Configurez les stratégies d'authentification et d'autorisation](#)

[Vérifier](#)

[Dépanner](#)

[Débogages sur ISE](#)

## Introduction

Ce document décrit comment configurer l'intégration 2.3 du Logiciel Cisco Identity Services Engine (ISE) avec des qualifications de Facebook pour l'accès invité authentifié.

## Conditions préalables

### Exigences

Cisco vous recommande de prendre connaissance des rubriques suivantes :

- Configuration du Cisco Identity Services Engine (ISE)
- Configuration de base d'app de Facebook

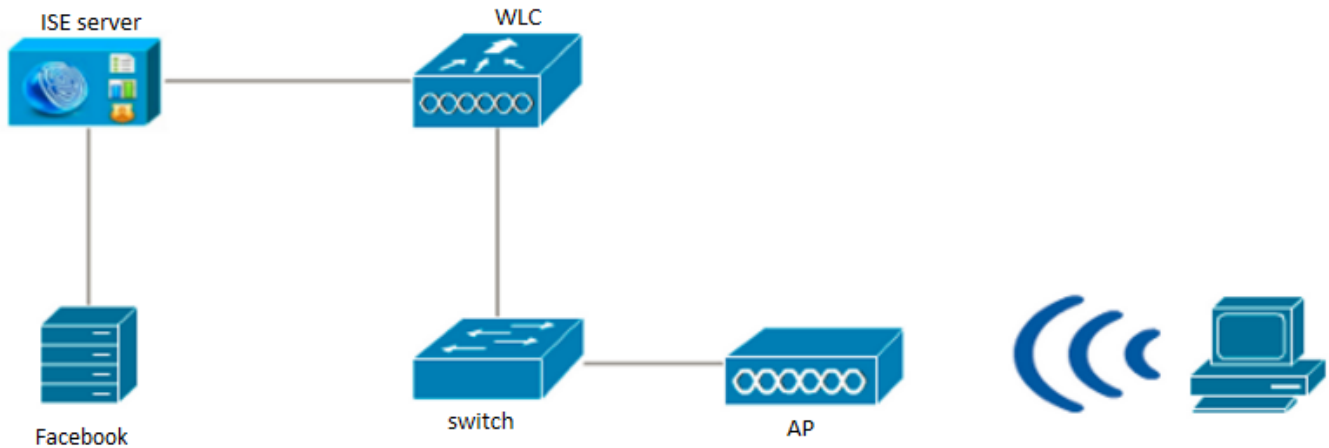
### [Composants utilisés](#)

Les informations contenues dans ce document sont basées sur les versions de matériel et de logiciel suivantes :

- Version 2.3 de Cisco ISE
- Procédure de connexion de piratage de Facebook
- Version 8.3.102.0 Sans fil du contrôleur LAN de Cisco (WLC)

Les informations contenues dans ce document ont été créées à partir des périphériques d'un environnement de laboratoire spécifique. Tous les périphériques utilisés dans ce document ont démarré avec une configuration effacée (par défaut). Si votre réseau est opérationnel, assurez-vous que vous comprenez l'effet potentiel de toute commande.

## Diagramme du réseau



## Configuration

La configuration d'app de Facebook présentée est un exemple et pas une configuration recommandée par Cisco.

### 1. Configurez l'app de Facebook

Allez à <https://developers.facebook.com>, et enregistrez le nouvel app.

The screenshot shows the 'facebook for developers' website. The navigation bar includes 'Products', 'Docs', 'Tools & Support', 'News', and 'Videos'. A search bar and a 'Get Started' button are also visible. A modal window is open with the following content:

- Progress indicator: 1 Register (checked), 2 First App, 3 Tell Us About You
- Header: Welcome to Facebook for Developers
- Sub-header: Lets get started with your first app
- Form field: APP NAME with the value 'ISEApp' and a note 'You can change the name now or later'
- Form field: CONTACT EMAIL with a masked email address and a note 'Used for important updates about your app'
- Next button

Le tableau de bord de l'application affiche l'**ID d'app** et l'**app la clé secrète**, qui sera utilisée sur ISE pour créer la procédure de connexion sociale externe.


← → ↻ Secure | https://developers.facebook.com/apps/62096[redacted]/dashboard/

ISEApp APP ID: 62096[redacted] View Analytics Tools & Support Docs

Dashboard


Click to see analytics for this app. X

**Dashboard**

 ISEApp o  
This app is in development mode and can only be used by app admins, developers and testers [?]

API Version [?] v2.10 App ID 62096[redacted]

App Secret  
..... Show

 **Get Started with the Facebook SDK**

Use our quick start guides to set up the Facebook SDK for your iOS or Android app, Facebook Web Game or website. [Choose Platform](#)

Faites le public créé d'app.

← → ↻ Secure | https://developers.facebook.com/apps/62096[redacted]/review-status/

ISEApp APP ID: 62096[redacted] View Analytics Tools & Support Docs

Dashboard

Settings

Roles

Alerts

**App Review**

PRODUCTS

+ Add Product

**Make ISEApp public?**

Yes  No Your app is currently **live** and available to the public.

**Submit Items for Approval**

Some Facebook integrations require approval before public usage. Before submitting your app for review, please consult our [Platform Policy and Review Guidelines](#). [Start a Submission](#)

**Approved Items** [?]

LOGIN PERMISSIONS

## 2. Intégrez ISE avec l'app de Facebook

Utilisez les informations mentionnées ci-dessous afin d'intégrer l'app de Facebook avec Cisco ISE.

Naviguez vers la **gestion > la Gestion de l'identité > des sources extérieures d'identité > procédure de connexion sociale** et ajoutez la nouvelle mémoire.

**External Identity Sources**

- Certificate Authentication Profile
- Active Directory
  - AD
- LDAP
- ODBC
- RADIUS Token
- RSA SecurID
- SAML Id Providers
- Social Login

Social Login > New

**Social Login**

Name \* FacebookApp

Description

Type \* Facebook

App ID \* 62096

App Secret \*  Show

Cancel Submit

Configure the ISE guest portal to allow the social login procedure.

Identity Services Engine Home Context Visibility Operations Policy Administration Work Centers License Warning

Network Access Guest Access TrustSec BYOD Profiler Posture Device Administration PassiveID

Overview Identities Identity Groups Ext Id Sources Administration Network Devices Portals & Components Manage Accounts Policy Elements Policy Sets Reports Custom Portal Files

Guest Portals

Guest Types Sponsor Groups Sponsor Portals

### Portals Settings and Customization

Portal Name: \* Self-Registered Guest Portal (default) Description: Guests are allowed to create their own accounts and access the network us Portal test URL

Save Close

Language File

#### Portal Behavior and Flow Settings

Use these settings to specify the guest experience for this portal.

#### Portal Page Customization

Customize portal pages by applying a theme and specifying field names and messages displayed to users.

#### Portal & Page Settings

#### Guest Flow (Based on settings)

#### Portal Settings

#### Login Page Settings

Require an access code:

Maximum failed login attempts before rate limiting:  (1 - 999)

Time between login attempts when rate limiting:  minutes (1 - 3000)

Include an AUP as link

Require acceptance

Allow guests to create their own accounts

Allow social login

Show Registration form after social login (i)

Allow guests to change password after login (i)

Allow the following identity-provider guest portal to be used for login (i)

There are no guest portals configured to use a SAML Id Provider as the Authentication Method.

#### Registration Form Settings

Assign to guest type:

Configure guest types at:  
Work Centers > Guest Access > Configure > Guest Types

Account valid for:  Days Maximum: 5 DAYS

Require a registration code:

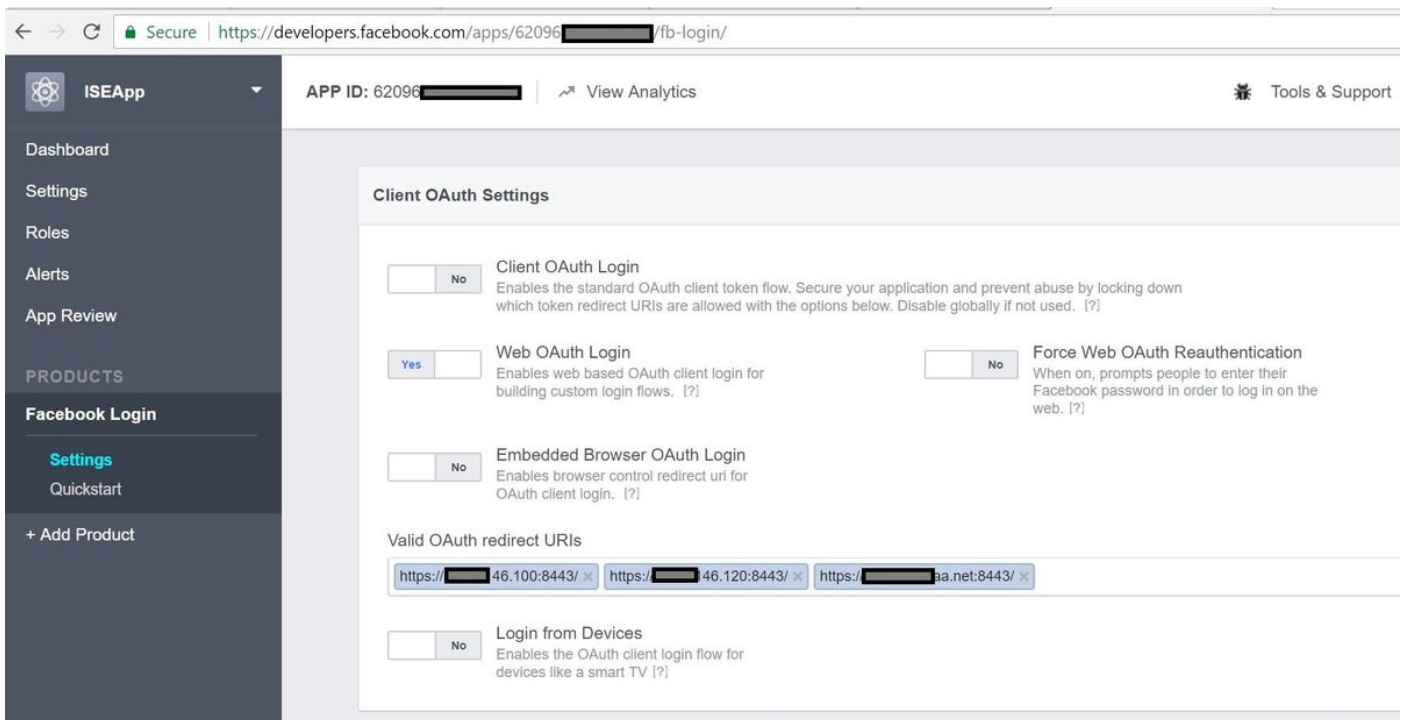
Fields to include	Required
<input checked="" type="checkbox"/> User name (i)	<input type="checkbox"/>
<input checked="" type="checkbox"/> First name	<input type="checkbox"/>
<input checked="" type="checkbox"/> Last name	<input type="checkbox"/>
<input checked="" type="checkbox"/> Email address	<input checked="" type="checkbox"/>

Après avoir configuré le portail d'invité ISE pour permettre la procédure de connexion sociale, la procédure de connexion sociale sera remplie avec l'URLs et les besoins d'être ajouté aux configurations d'app de Facebook, **OAuth valide réorientent l'URLs.**

The screenshot shows the Cisco Identity Services Engine (ISE) interface. The top navigation bar includes 'Identity Services Engine', 'Home', 'Context Visibility', 'Operations', 'Policy', 'Administration', and 'Work Centers'. Below this, a secondary navigation bar lists 'System', 'Identity Management', 'Network Resources', 'Device Portal Management', 'pxGrid Services', 'Feed Service', and 'Threat Centric NAC'. A 'Click here to' button is visible on the right. The main content area is divided into two panels. The left panel, titled 'External Identity Sources', shows a tree view with categories like 'Certificate Authentication Profile', 'Active Directory', 'Social Login', etc. The right panel, titled 'Social Login > FacebookApp', contains the configuration form. The form includes fields for 'Name' (FacebookApp), 'Description', 'Type' (Facebook), 'App ID' (62098...), and 'App Secret' (masked with dots). There are 'Show', 'Cancel', and 'Save' buttons. At the bottom, a 'Portal' dropdown is set to 'Self-Registered Guest Portal (default)'. A blue information icon with the text 'Add all these automated redirect URLs to the App settings.' is followed by a text box containing three URLs: 'https://[redacted]:100:8443', 'https://[redacted]:120:8443', and 'https://[redacted].a.net:8443'.

Ajoutez la **procédure de connexion de Facebook des Produits** et ajoutez **OAuth valide réorientent l'URLs**.

L'URLs sera automatiquement généré sur ISE après avoir avec succès lié le portail ISE avec la procédure de connexion sociale externe de Facebook.

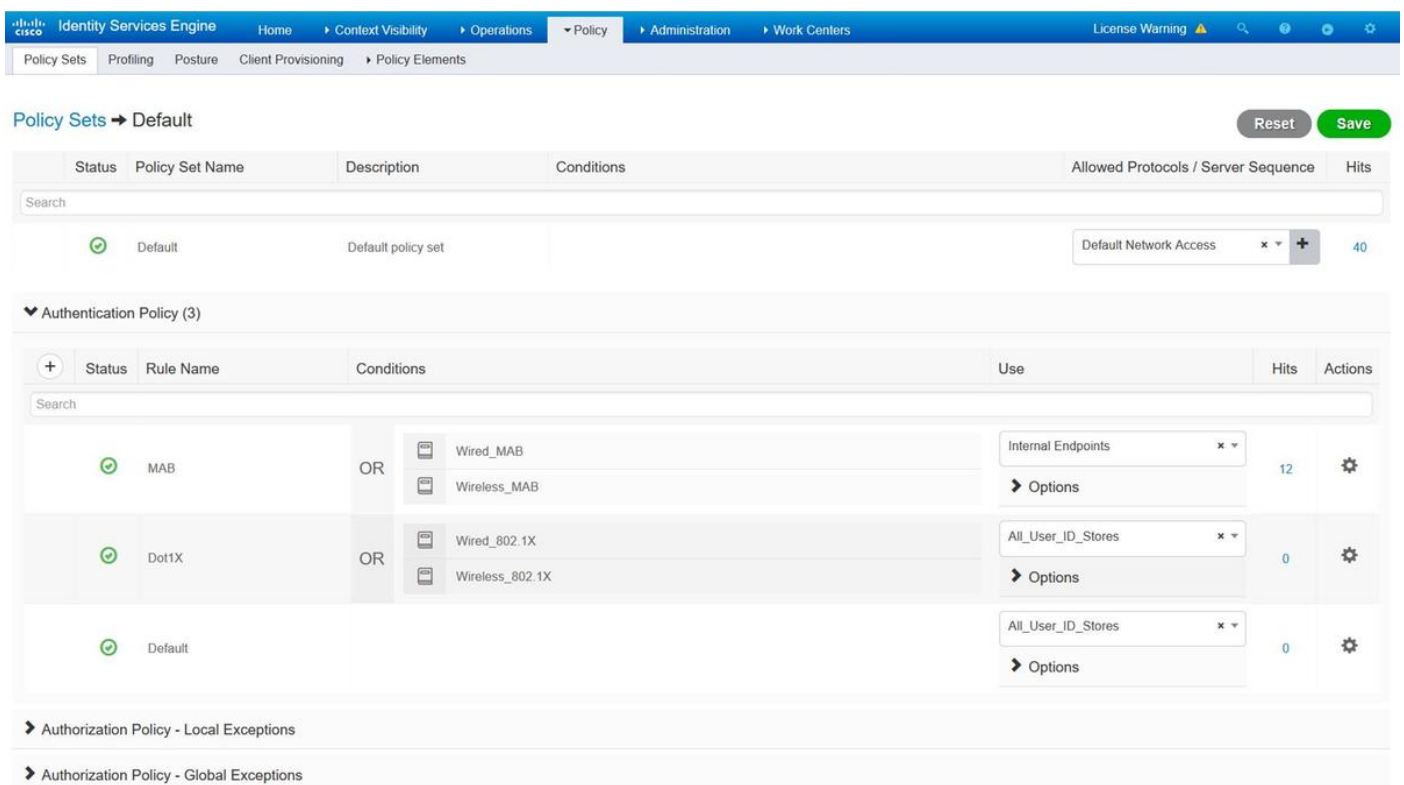


### 3. Configurez les stratégies d'authentification et d'autorisation

La configuration ISE suit les mêmes étapes de configuration que l'invité CWA (authentification Web centrale).

(Pour des étapes de configuration sur ISE CWA se rapportent s'il vous plaît au document ci-dessous :

<https://www.cisco.com/c/en/us/support/docs/security/identity-services-engine/115732-central-web-auth-00.html>)



Identity Services Engine Home Context Visibility Operations Policy Administration Work Centers License Warning

Policy Sets Profiling Posture Client Provisioning Policy Elements

Search

All\_User\_ID\_Stores 0 Options

Authorization Policy - Local Exceptions

Authorization Policy - Global Exceptions

Authorization Policy (12)

Status	Rule Name	Conditions	Profiles	Security Groups	Hits	Actions
✓	Wi-Fi_Guest_Access	AND Guest_Flow Wireless_MAB	PermitAccess	Guests	5	
✓	Wi-Fi_Redirect_to_Guest_Login	Wireless_MAB	Cisco_WebAuth_Wireless	Select from list	12	

Assurez-vous que la plage d'IP address de Facebook (31.13.0.0/16) est exclue du WLC réorientent l'ACL

MONITOR WLANs CONTROLLER WIRELESS SECURITY MANAGEMENT COMMANDS HELP FEEDBACK Save Configuration Ping

Security

AAA  
General  
RADIUS  
Authentication  
Accounting  
Fallback  
DNS  
Downloaded AVP  
TACACS+  
LDAP  
Local Net Users  
MAC Filtering  
Disabled Clients  
User Login Policies  
AP Policies  
Password Policies  
Local EAP  
Advanced EAP  
Priority Order  
Certificate  
Access Control Lists  
Access Control Lists  
CPU Access Control Lists  
FlexConnect ACLs  
Layer2 ACLs  
Wireless Protection Policies  
Web Auth  
TrustSec SXP  
Local Policies  
Advanced

Access Control Lists > Edit

General

Access List Name Redirect-ACL

Deny Counters 0

Seq	Action	Source IP/Mask	Destination IP/Mask	Protocol	Source Port	Dest Port	DSCP	Direction	Number of Hits
1	Permit	0.0.0.0 / 0.0.0.0	0.0.0.0 / 0.0.0.0	UDP	Any	Any	Any	Any	2391
2	Permit	0.0.0.0 / 0.0.0.0	0.0.0.0 / 0.0.0.0	ICMP	Any	Any	Any	Any	161
3	Permit	0.0.0.0 / 0.0.0.0	0.0.0.0 / 255.255.0.0	Any	Any	Any	Any	Any	1360
4	Permit	0.0.0.0 / 255.255.0.0	0.0.0.0 / 0.0.0.0	Any	Any	Any	Any	Any	1884
5	Permit	0.0.0.0 / 0.0.0.0	31.13.0.0 / 255.255.0.0	Any	Any	Any	Any	Any	708
6	Permit	31.13.0.0 / 255.255.0.0	0.0.0.0 / 0.0.0.0	Any	Any	Any	Any	Any	844
7	Deny	0.0.0.0 / 0.0.0.0	0.0.0.0 / 0.0.0.0	Any	Any	Any	Any	Any	7424

## Vérifiez

Une fois que l'utilisateur d'invité est réorienté ils sont présentés avec la procédure de connexion avec l'option de Facebook.





### Welcome

Welcome to the Guest Portal. Sign on with the username and password provided to you.

Username:

Password:

[Please read the terms and conditions.](#)

I agree to the terms and conditions

Sign On

OR

Log in With Facebook

[Don't have an account?](#)

Ce bouton tire profit de l'application et des redirect to de création récente la page de connexion de facebook où l'utilisateur entrera dans leurs qualifications de facebook.

facebook

Sign Up

Log into Facebook

Log In

or

Create New Account

[Forgot account?](#)

[Not now](#)

Après l'authentification réussie, l'utilisateur d'invité réoriente de nouveau au portail ISE.



**Welcome Message**

Click **Continue** to connect to the network.  
You're very close to gaining network access.

Continue

### Logs vivants ISE Radius :

Identity Services Engine | Home | Context Visibility | Operations | Policy | Administration | Work Centers | License Warning

RADIUS | Threat-Centric NAC Live Logs | TACACS | Troubleshoot | Adaptive Network Control | Reports

Live Logs | Live Sessions

Misconfigured Supplicants: 0 | Misconfigured Network Devices: 0 | RADIUS Drops: 0 | Client Stopped Responding: 0 | Repeat Counter: 0

Refresh | Every 1 minute | Show | Latest 100 records | Within | Last 24 hours

Refresh | Reset Repeat Counts | Export To | Filter | Settings

Time	Status	Details	Repeat ...	Identity	Endpoint ID	Posture St...	Endpoint Profile	Authenticat...	Authorization Policy
Aug 21, 2017 10:04:06.404 AM			0	Ulugbek Yusubaliev	E4.A4.71.85.FB.6A		Windows10-Workstation	Default	Default >> Wi-Fi_GuestT_Ac
Aug 21, 2017 10:04:06.397 AM				Ulugbek Yusubaliev	E4.A4.71.85.FB.6A		Windows10-Workstation	Default	Default >> Wi-Fi_GuestT_Ac
Aug 21, 2017 10:04:06.385 AM					E4.A4.71.85.FB.6A				
Aug 21, 2017 10:04:05.766 AM				Ulugbek Yusubaliev	E4.A4.71.85.FB.6A				
Aug 21, 2017 10:01:07.080 AM				E4.A4.71.85.FB.6A	E4.A4.71.85.FB.6A		Intel-Device	Default >> M...	Default >> Wi-Fi_Redirect_
Aug 21, 2017 09:59:59.321 AM				E4.A4.71.85.FB.6A	E4.A4.71.85.FB.6A		Intel-Device	Default >> M...	Default >> Wi-Fi_Redirect_
Aug 21, 2017 09:59:59.302 AM					E4.A4.71.85.FB.6A				
Aug 21, 2017 09:59:49.261 AM				E4.A4.71.85.FB.6A	E4.A4.71.85.FB.6A			Default >> M...	Default >> Wi-Fi_Redirect_

## Overview

Event	5236 Authorize-Only succeeded
Username	Ulugbek Yusubaliev
Endpoint Id	E4:A4:71:85:FB:6A ⓘ
Endpoint Profile	Windows10-Workstation
Authentication Policy	Default
Authorization Policy	Default >> Wi-Fi_Guest_Access
Authorization Result	Guests_PermitAccess

## Authentication Details

Source Timestamp	2017-08-21 10:04:06.395
Received Timestamp	2017-08-21 10:04:06.397
Policy Server	ISE23
Event	5236 Authorize-Only succeeded
Username	Ulugbek Yusubaliev
User Type	GuestUser
Endpoint Id	E4:A4:71:85:FB:6A
Calling Station Id	e4-a4-71-85-fb-6a
Endpoint Profile	Windows10-Workstation
Authentication Identity Store	<u>FacebookApp</u>
Identity Group	GuestEndpoints
Audit Session Id	0e249a0500000007599af5b2
Authentication Method	Authorize Only
Service Type	Authorize Only
Network Device	WLC

Dépanner

## Débogages sur ISE

Afin d'activer des débogages sur ISE, naviguer vers la **gestion > le système > se connectant > configuration de log de débogage**, sélectionner le noeud RPC et changer le niveau de log des composants suivants **POUR DÉBOGUER** :

Component Name	Log Level	Description
<input type="radio"/> guest-access-admin	DEBUG	Administration guest access
<input type="radio"/> oauth	DEBUG	Social login messages
<input type="radio"/> portal	DEBUG	Portal (Guest, Hotspot, BYOD, CP) debug messages

Logs à vérifier - ise-psc.log et guest.log. Vous pouvez les suivre directement du CLI d'ISE :

`queue d'ise-psc.log d'application de show logging ise23-1/admin#`

Pendant la connexion à l'app de Facebook, ISE affiche l'erreur chronométrée par connexion :

```
2017-08-21 08:28:18,003 DEBUG [admin-http-pool22][] com.cisco.cpm.oauth.OAuthClient -::::- Got error while checking OAuth settings for AppId: [123456789] and secret key: ****
2017-08-21 08:28:18,003 ERROR [admin-http-pool22][]
admin.restui.features.social.SocialLoginUIApi -::::- ERROR
connect timed out
```

Assurez-vous que le noeud ISE a une connexion internet directe.

Utilisant le proxy adressé sur la bogue [CSCve87511](#) « support social de procédure de connexion avec le serveur proxy »