

# Configuration d'IPSec entre un routeur Cisco IOS et un client VPN Cisco 4.x pour Windows à l'aide de RADIUS pour l'authentification d'utilisateur

## Contenu

[Introduction](#)

[Conditions préalables](#)

[Conditions requises](#)

[Composants utilisés](#)

[Conventions](#)

[Configurez](#)

[Diagramme du réseau](#)

[Configurez le routeur 2621XM](#)

[Configuration du serveur RADIUS](#)

[Configurez le serveur de RAYON pour l'authentification de l'utilisateur](#)

[Configuration VPN Client 4.8](#)

[Activation de la Segmentation de tunnel](#)

[Configurez la caractéristique de retour de serveur de RAYON](#)

[Vérifiez](#)

[Dépannez](#)

[Dépannage des commandes](#)

[Sortie de débogage](#)

[Informations connexes](#)

## [Introduction](#)

Ce document explique comment configurer une connexion entre un routeur et le client VPN Cisco 4.x en utilisant le Remote Authentication Dial-In User Service (RADIUS) pour l'authentification de l'utilisateur. Connexions de support de versions de logiciel 12.2(8)T et ultérieures de Cisco IOS® du Client VPN Cisco 4.x. Les clients VPN 3.x et 4.x utilisent la stratégie du groupe 2 de Diffie Hellman (DH). La commande « isakmp policy # group 2 » active les clients VPN à connecter.

Ce document affiche l'authentification sur le serveur de RAYON, et l'autorisation (telle qu'assigner Windows Internet Naming Service (WINS) et service de nom de domaine (les DN)) localement par le routeur. Si vous êtes intéressé à faire l'authentification et l'autorisation par le serveur de RAYON, référez-vous à la [configuration d'IPSec entre un routeur Cisco IOS et un Client VPN Cisco 4.x pour Windows utilisant le RAYON](#).

**Remarque:** La comptabilité d'IPSec VPN est maintenant disponible. Référez-vous à [IPSec VPN](#)

[expliquant](#) plus d'informations et de configurations d'échantillon.

Référez-vous au [tunnel d'IPsec entre le routeur IOS et le Client VPN Cisco 4.x pour Windows avec l'exemple de configuration d'authentification de l'utilisateur TACACS+](#) pour plus d'informations sur le scénario où l'authentification de l'utilisateur se produit extérieurement avec le protocole TACACS+.

Référez-vous à [configurer le Client VPN Cisco 3.x pour Windows à l'IOS utilisant l'authentification étendue locale](#) pour plus d'informations sur le scénario où l'authentification de l'utilisateur se produit localement dans le routeur Cisco IOS.

Référez-vous à [PIX/ASA 7.x et Client VPN Cisco 4.x pour Windows avec l'exemple de configuration d'authentification de RAYON du Microsoft Windows 2003 IAS](#) pour les informations sur la façon dont installer la connexion VPN d'Accès à distance entre un Client VPN Cisco (4.x pour Windows) et l'appliance 7.x de Sécurité de gamme 500 PIX utilisant un serveur de RAYON du Service d'authentification Internet de Microsoft Windows 2003 (IAS).

Référez-vous à [IPSec - PIX au caractère d'ambiguïté de client vpn, pré-partagé, configuration de mode avec l'authentification étendue](#) pour les informations sur la façon dont connecter un client vpn à un Pare-feu PIX utilisant des masques, mode-config, la commande d'**autorisation-ipsec de connexion de sysopt**, et authentification étendue (Xauth).

Référez-vous à [IPsec entre un concentrateur VPN 3000 et un client vpn 4.x pour Windows utilisant le RAYON pour l'exemple de configuration d'authentification de l'utilisateur et de comptabilité](#) pour les informations sur la façon dont établir un tunnel d'IPSec entre un concentrateur de Cisco VPN 3000 et un Client VPN Cisco 4.x pour Windows utilisant le RAYON pour l'authentification de l'utilisateur et la comptabilité.

## Conditions préalables

### Conditions requises

Assurez-vous que vous répondez à ces exigences avant d'essayer cette configuration :

- Un groupe d'adresses à assigner pour IPSec
- Un groupe a appelé "3000clients" avec un mot de passe de "cisco123"
- Authentification de l'utilisateur sur un serveur de RAYON

### Composants utilisés

Les informations contenues dans ce document sont basées sur les versions de matériel et de logiciel suivantes :

- Un routeur 2621XM qui exécute la version du logiciel Cisco IOS 12.2(15)T2
- CiscoSecure ACS pour la version 4.2 de Windows 2000 (n'importe quel serveur de RAYON devrait travailler)
- Client VPN Cisco pour la version 4.8 de Windows (n'importe quel client vpn 4.x et plus tard devrait travailler)

Les informations contenues dans ce document ont été créées à partir des périphériques d'un environnement de laboratoire spécifique. Tous les périphériques utilisés dans ce document ont

démarré avec une configuration effacée (par défaut). Si votre réseau est opérationnel, assurez-vous que vous comprenez l'effet potentiel de toute commande.

Ceci est sorti de la commande de **show version** sur le routeur :

```
vpn2621#show version Cisco Internetwork Operating System Software IOS (tm) C2600 Software
(C2600-IK9S-M), Version 12.2(15)T2, RELEASE SOFTWARE (fc2) TAC Support: http://www.cisco.com/tac
Copyright (c) 1986-2003 by cisco Systems, Inc. Compiled Thu 01-May-03 10:39 by nmasa Image text-
base: 0x80008098, data-base: 0x81BBB0BC ROM: System Bootstrap, Version 12.2(7r) [cmong 7r],
RELEASE SOFTWARE (fc1) vpn2621 uptime is 1 hour, 34 minutes System returned to ROM by reload
System image file is "flash:c2600-ik9s-mz.122-15.T2.bin" This product contains cryptographic
features and is subject to United States and local country laws governing import, export,
transfer and use. Delivery of Cisco cryptographic products does not imply third-party authority
to import, export, distribute or use encryption. Importers, exporters, distributors and users
are responsible for compliance with U.S. and local country laws. By using this product you agree
to comply with applicable laws and regulations. If you are unable to comply with U.S. and local
laws, return this product immediately. A summary of U.S. laws governing Cisco cryptographic
products may be found at: http://www.cisco.com/wwl/export/crypto/tool/stqrg.html If you require
further assistance please contact us by sending email to export@cisco.com. cisco 2621XM
(MPC860P) processor (revision 0x100) with 125952K/5120K bytes of memory. Processor board ID
JAD064503FK (64188517) M860 processor: part number 5, mask 2 Bridging software. X.25 software,
Version 3.0.0. 2 FastEthernet/IEEE 802.3 interface(s) 2 Serial(sync/async) network interface(s)
1 terminal line(s) 1 Virtual Private Network (VPN) Module(s) 1 cisco content engine(s) 32K bytes
of non-volatile configuration memory. 32768K bytes of processor board System flash (Read/Write)
Configuration register is 0x2102
```

## Conventions

Pour plus d'informations sur les conventions utilisées dans ce document, reportez-vous à [Conventions relatives aux conseils techniques Cisco](#).

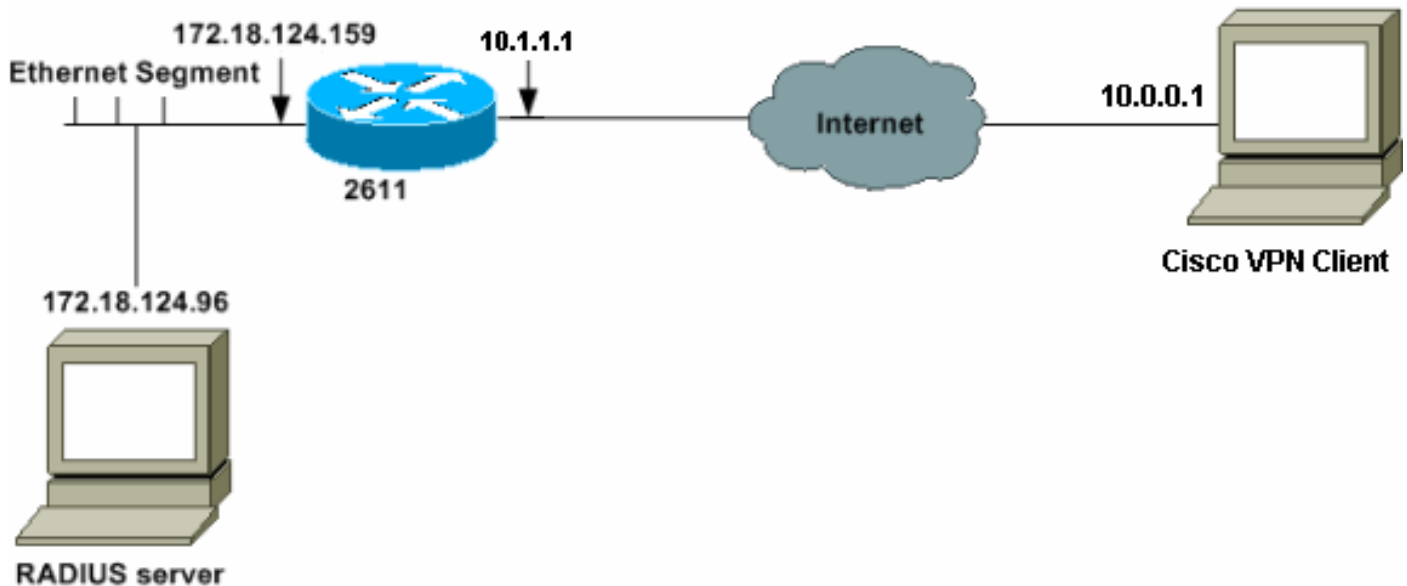
## Configurez

Cette section vous fournit des informations pour configurer les fonctionnalités décrites dans ce document.

**Remarque:** Utilisez l'outil [Command Lookup Tool](#) (clients [enregistrés](#) seulement) pour trouver plus d'informations sur les commandes utilisées dans ce document.

## Diagramme du réseau

Ce document utilise la configuration réseau suivante :



## [Configurez le routeur 2621XM](#)

### Routeur 2621XM

```

!--- Enable authentication, authorization and accounting
(AAA) !--- for user authentication and group
authorization. aaa new-model ! !--- In order to enable
extended authentication (Xauth) for user authentication,
!--- enable the aaa authentication commands. !--- "Group
radius local" specifies RADIUS user authentication !---
to be used by default and to use local database if
RADIUS server is not reachable. aaa authentication login
userauthen group radius local !--- In order to enable
group authorization, !--- enable the aaa authorization
commands. aaa authorization network groupauthor local !-
-- Create an Internet Security Association and !--- Key
Management Protocol (ISAKMP) policy for Phase 1
negotiations. crypto isakmp policy 3 encr 3des
authentication pre-share group 2 ! !--- Create a group
that will be used to specify the !--- Windows Internet
Naming Service (WINS) and Domain Naming Service (DNS)
server !--- addresses to the client, along with the pre-
shared key for authentication. crypto isakmp client
configuration group 3000client key cisco123 dns
10.1.1.10 wins 10.1.1.20 domain cisco.com pool ippool !
!--- Create the Phase 2 policy for actual data
encryption. crypto ipsec transform-set myset esp-3des
esp-sha-hmac ! !--- Create a dynamic map and !--- apply
the transform set that was created. crypto dynamic-map
dynmap 10 set transform-set myset ! !--- Create the
actual crypto map, !--- and apply the AAA lists that
were created earlier. crypto map clientmap client
authentication list userauthen crypto map clientmap
isakmp authorization list groupauthor crypto map
clientmap client configuration address respond crypto
map clientmap 10 ipsec-isakmp dynamic dynmap !--- Apply
the crypto map on the outside interface. interface
Ethernet0/0 ip address 10.1.1.1 255.255.255.0 half-
duplex crypto map clientmap interface Ethernet0/1 ip
address 172.18.124.159 255.255.255.0 half-duplex ! !---

```

```

Create a pool of addresses to be assigned to the VPN
Clients. ip local pool ippool 10.16.20.1 10.16.20.200 ip
classless ip route 0.0.0.0 0.0.0.0 10.1.1.2 ip http
server ip pim bidir-enable ! ! ! !--- Specify the IP
address of the RADIUS server, !--- along with the RADIUS
shared secret key. radius-server host 172.18.124.96
auth-port 1645 acct-port 1646 key cisco123 radius-server
retransmit 3

```

## Configuration du serveur RADIUS

### Configurez le serveur de RAYON pour l'authentification de l'utilisateur

Terminez-vous ces étapes afin de configurer le serveur de RAYON :

1. Ajoutez une entrée pour le routeur dans la base de données du serveur de RAYON.

AAA Client Hostname	AAA Client IP Address	Authenticate Using
<a href="#">340</a>	172.18.124.151	RADIUS (Cisco Aironet)
<a href="#">Aironet-340-Lab</a>	14.36.1.99	RADIUS (Cisco Aironet)
<a href="#">glennstest</a>	172.18.124.120	RADIUS (Cisco IOS/PIX)
<a href="#">router</a>	172.18.124.150	TACACS+ (Cisco IOS)

[Add Entry](#)

- [Network Device Groups](#)
- [Adding a Network Device Group](#)
- [Renaming a Network Device Group](#)
- [Deleting a Network Device Group](#)
- [AAA Clients](#)
- [Adding a AAA Client](#)
- [Editing a AAA Client](#)
- [Deleting a AAA Client](#)
- [AAA Servers](#)
- [Adding a AAA Server](#)
- [Editing a AAA Server](#)
- [Deleting a AAA Server](#)
- [Proxy Distribution Table](#)
- [Adding a Proxy Distribution Table Entry](#)
- [Sorting Proxy Distribution Table Entries](#)

2. Spécifiez l'adresse IP du routeur "172.18.124.159", avec la clé secrète partagée "cisco123". Choisissez le **RAYON** dans l'authentifier utilisant la liste déroulante.

**Add AAA Client**

AAA Client Hostname:

AAA Client IP Address:

Key:

Authenticate Using:

Single Connect TACACS+ AAA Client (Record stop in accounting on failure).

Log Update/Watchdog Packets from this AAA Client

Log RADIUS Tunneling Packets from this AAA Client

- [AAA Client Hostname](#)
- [AAA Client IP Address](#)
- [Key](#)
- [Network Device Group](#)
- [Authenticate Using](#)
- [Single Connect TACACS+ AAA Client](#)
- [Log Update/Watchdog Packets from this AAA Client](#)
- [Log RADIUS Tunneling Packets from this AAA Client](#)

**AAA Client Hostname**

The AAA Client Hostname is the name assigned to the AAA client.

[\[Back to Top\]](#)

**AAA Client IP Address**

3. Ajoutez le nom d'utilisateur pour l'utilisateur VPN dans la base de données de CiscoSecure. Dans l'exemple, le nom d'utilisateur est Cisco.

User:

List users beginning with letter/number:

A B C D E F G H I J K L M  
 N O P Q R S T U V W X Y Z  
 0 1 2 3 4 5 6 7 8 9

- [User Setup and External User Databases](#)
- [Finding a Specific User in the CiscoSecure User Database](#)
- [Adding a User to the CiscoSecure User Database](#)
- [Listing Usernames that Begin with a Particular Character](#)
- [Listing All Usernames in the CiscoSecure User Database](#)
- [Changing a Username in the CiscoSecure User Database](#)

User Setup enables you to configure individual user information, add users, and delete users in the database.

4. Sur la prochaine fenêtre, spécifiez le mot de passe pour l'utilisateur Cisco. Dans cet exemple, le mot de passe est également Cisco. Vous pouvez tracer le compte utilisateur à un groupe. Une fois que vous avez terminé, cliquez sur Submit.

**Supplementary User Info**

Real Name

Description

---

**User Setup**

Password Authentication:

CiscoSecure PAP (Also used for CHAP/MS-CHAP/ARAP, if the Separate field is not checked.)

Password

Confirm Password

Separate (CHAP/MS-CHAP/ARAP)

Password

Confirm Password

When using a Token Card server for authentication, supplying a separate CHAP password for a token card user allows CHAP authentication. This is especially useful when token caching is enabled.

Group to which the user is assigned:

- [Account Disabled](#)
- [Deleting a Username](#)
- [Supplementary User Info](#)
- [Password Authentication](#)
- [Group to which the user is assigned](#)
- [Callback](#)
- [Client IP Address Assignment](#)
- [Advanced Settings](#)
- [Network Access Restrictions](#)
- [Max Sessions](#)
- [Usage Quotas](#)
- [Account Disable](#)
- [Downloadable ACLs](#)
- [Advanced TACACS+ Settings](#)
- [TACACS+ Enable Control](#)
- [TACACS+ Enable Password](#)
- [TACACS+ Outbound Password](#)
- [TACACS+ Shell Command Authorization](#)
- [TACACS+ Unknown Services](#)
- [IETF RADIUS Attributes](#)
- [RADIUS Vendor-Specific Attributes](#)

#### Account Disabled Status

Select the Account Disabled check box to disable this account; clear the check box to enable the account.

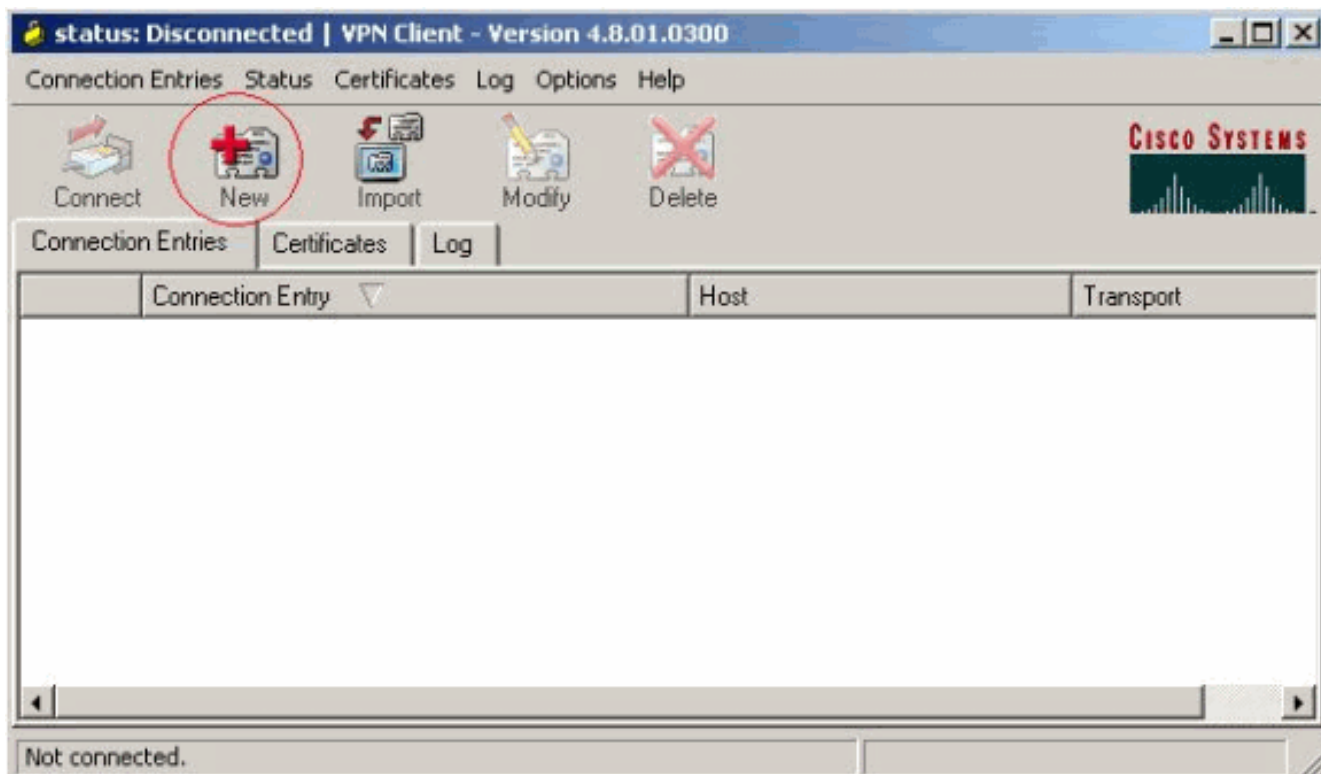
[\[Back to Top\]](#)

## [Configuration VPN Client 4.8](#)

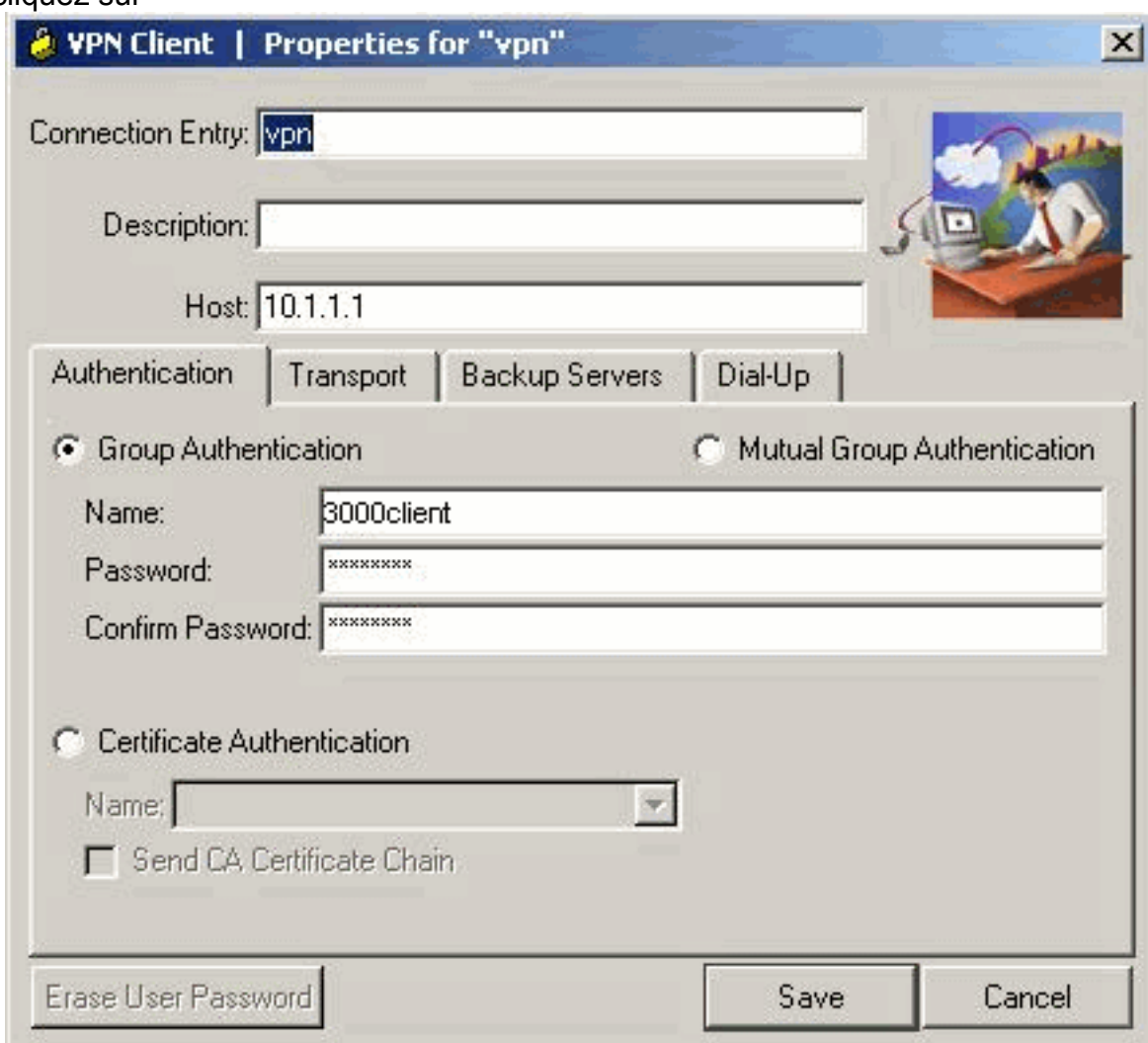
Terminez-vous ces étapes afin de configurer le client vpn 4.8 :

1. Choisissez le **début** > **les programmes** > **le client vpn de Cisco Systems** > **le client vpn**.
2. Cliquez sur **New** pour ouvrir la fenêtre Create New VPN Connection Entry.





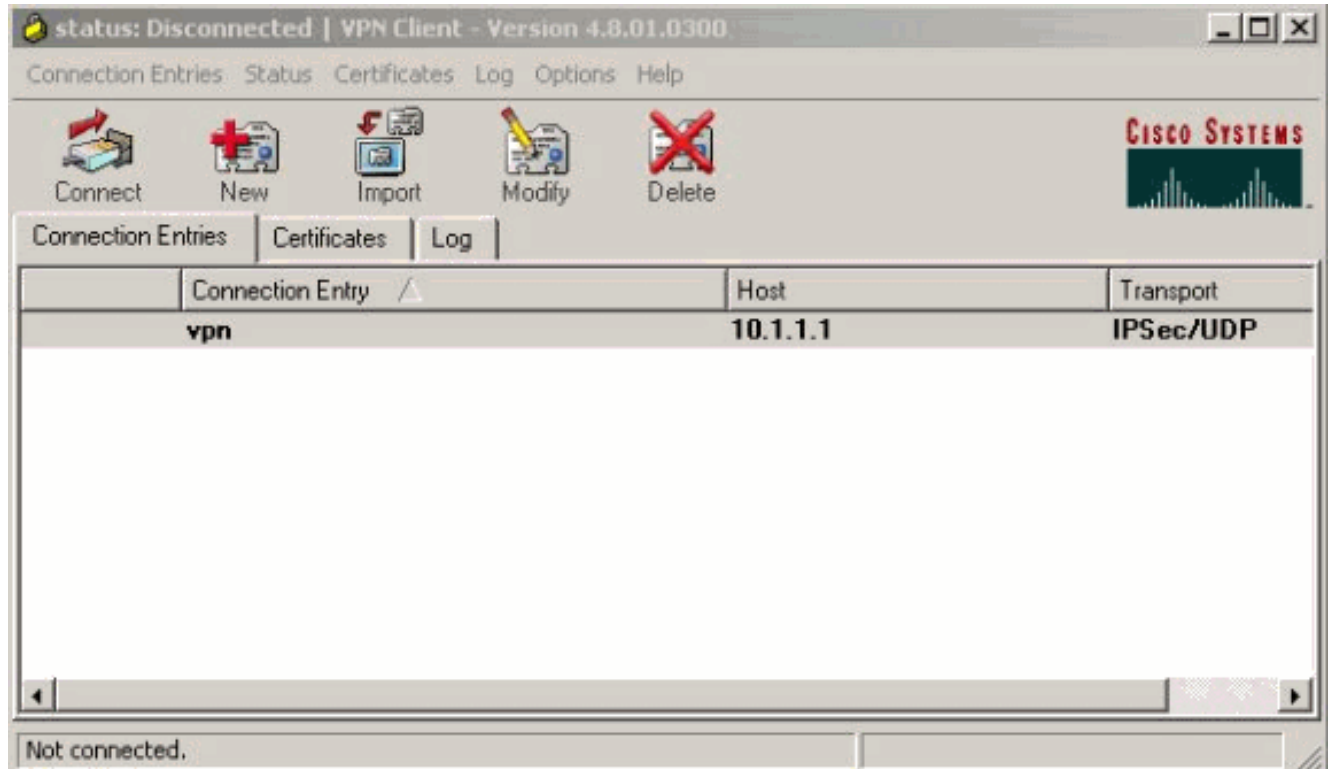
3. Entrez le nom de l'entrée de connexion avec une description. Écrivez l'adresse IP extérieure du routeur dans la case d'hôte. Entrez ensuite le nom du groupe VPN et le mot de passe, puis cliquez sur



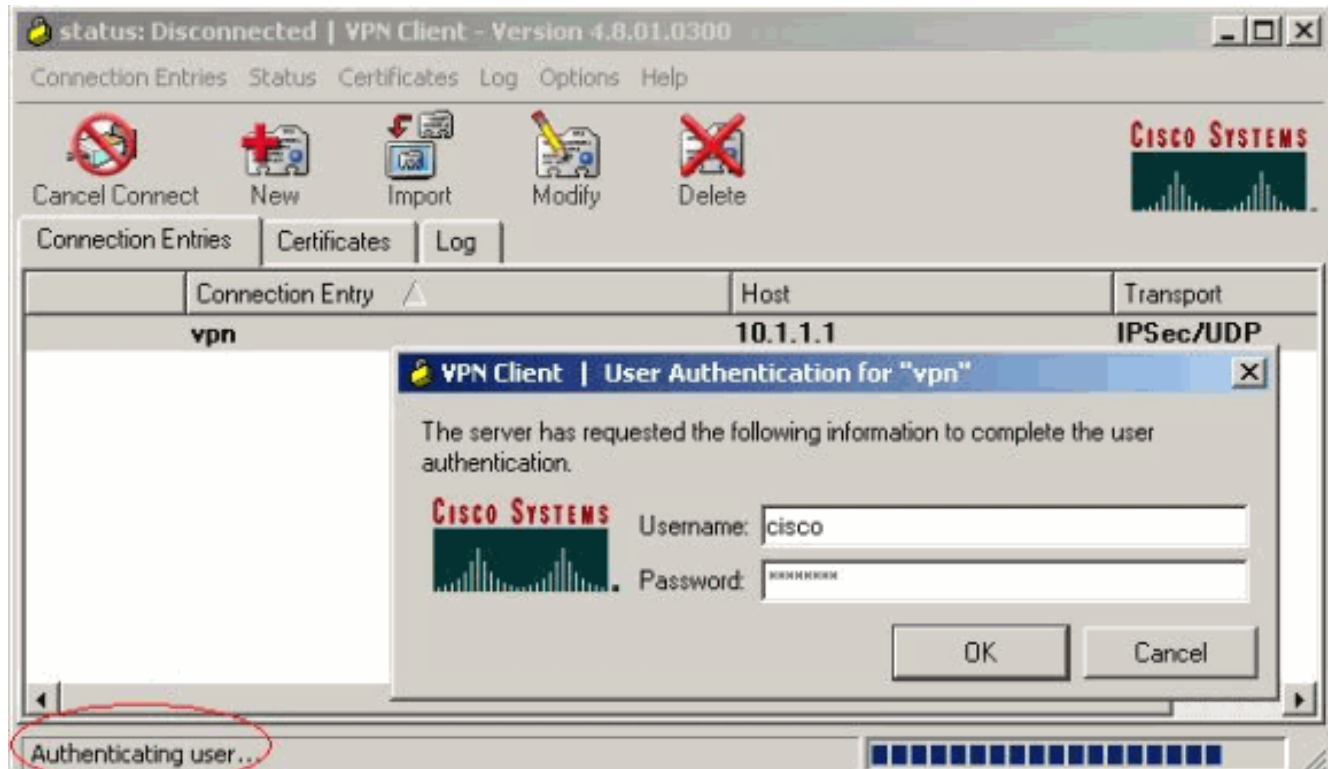
**Save.**

4. Cliquez sur la connexion que vous souhaitez utiliser et cliquez sur **Connect** dans la fenêtre principale du Client

## VPN.

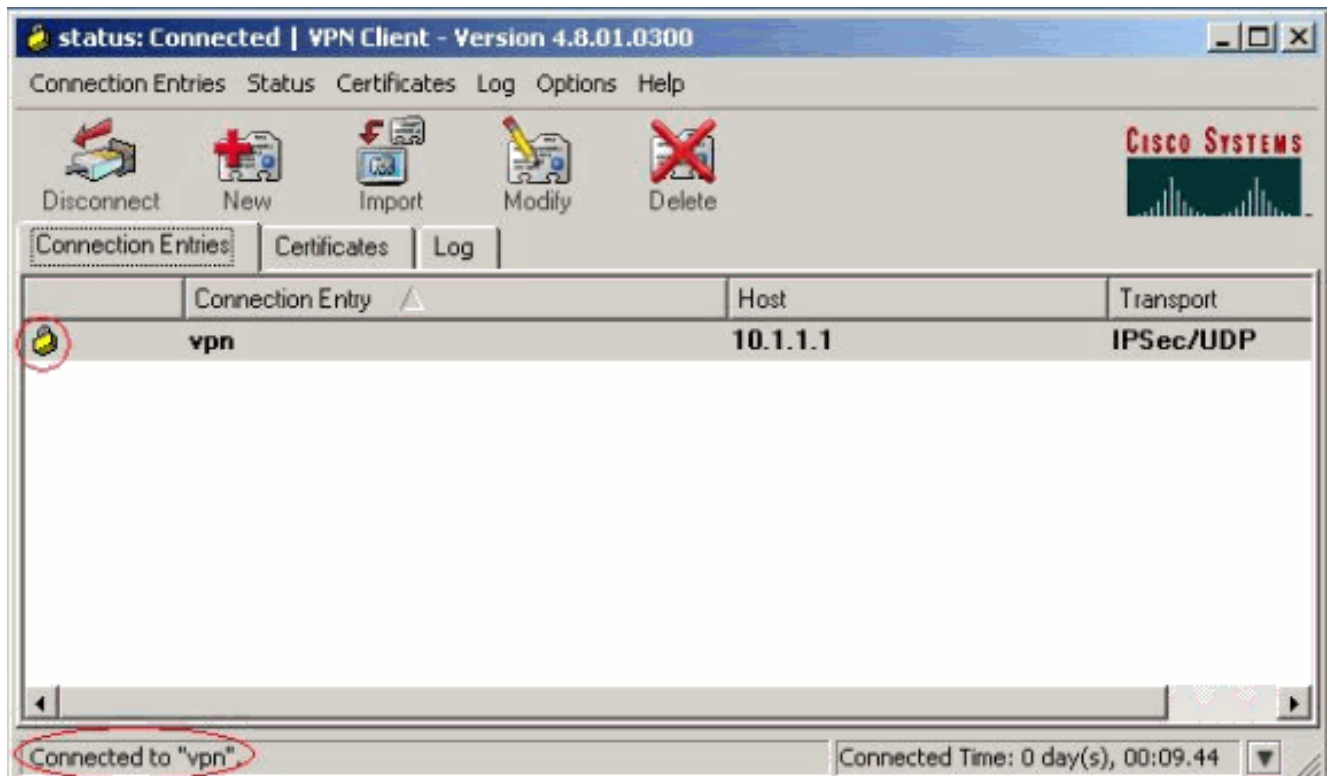


5. Lorsque vous y êtes invité, saisissez le nom d'utilisateur et le mot de passe pour Xauth et cliquez sur **OK** pour vous connecter au réseau distant.



Le client vpn obtient lié au routeur au lieu d'exploitation principal.





## Activation de la Segmentation de tunnel

Afin d'activer la Segmentation de tunnel pour les connexions VPN, assurez-vous que vous avez une liste de contrôle d'accès (ACL) configurée sur le routeur. Dans cet exemple, la commande de la **liste d'accès 108** est associée avec le groupe pour des buts de partitionner la mise en tunnel, et le tunnel est formé au réseau 14.38.X.X /16. La circulation décryptée aux périphériques pas dans l'ACL 108 (par exemple, l'Internet).

```
access-list 108 permit ip 172.18.124.0 0.0.255.255 10.16.20.0 0.0.0.255
```

Appliquez l'ACL sur les propriétés de groupe.

```
crypto isakmp client configuration group 3000client  
key cisco123  
dns 10.1.1.10 wins 10.1.1.20 domain cisco.com pool ippool acl 108
```

## Configurez la caractéristique de retour de serveur de RAYON

Quand le serveur primaire de RAYON devient indisponible, le routeur Basculement au prochain serveur de sauvegarde actif de RAYON. Le routeur continuera à utiliser le serveur secondaire de RAYON pour toujours, même si le serveur primaire est disponible. Habituellement le serveur primaire est les hautes performances et le serveur préféré. Si le serveur secondaire n'est pas disponible, la base de données locale peut être utilisée pour l'authentification utilisant l'**authentification login d'AAA userauthen la** commande de **gens du pays de rayon de groupe**.

## Vérifiez

Référez-vous à cette section pour vous assurer du bon fonctionnement de votre configuration.

L'**Outil Interpréteur de sortie** (clients **enregistrés** uniquement) (OIT) prend en charge certaines commandes **show**. Utilisez l'OIT pour afficher une analyse de la sortie de la commande **show**.

Ceci est sorti des commandes show appropriées :

```
vpn2621#show crypto isakmp sa dst src state conn-id slot 10.1.1.1 10.0.0.1 QM_IDLE 3 0
vpn2621#show crypto ipsec sa interface: Ethernet0/0 Crypto map tag: clientmap, local addr.
10.1.1.1 local ident (addr/mask/prot/port): (10.1.1.1/255.255.255.255/0/0) remote ident
(addr/mask/prot/port): (10.16.20.2/255.255.255.255/0/0) current_peer: 10.0.0.1 PERMIT, flags={}
#pkts encaps: 5, #pkts encrypt: 5, #pkts digest 5 #pkts decaps: 5, #pkts decrypt: 5, #pkts
verify 5 #pkts compressed: 0, #pkts decompressed: 0 #pkts not compressed: 0, #pkts compr.
failed: 0, #pkts decompress failed: 0 #send errors 0, #recv errors 0 local crypto endpt.:
10.1.1.1, remote crypto endpt.: 10.0.0.1 path mtu 1500, media mtu 1500 current outbound spi:
77AFCCFA inbound esp sas: spi: 0xC7AC22AB(3349947051) transform: esp-3des esp-sha-hmac , in use
settings = {Tunnel, } slot: 0, conn id: 2000, flow_id: 1, crypto map: clientmap sa timing:
remaining key lifetime (k/sec): (4608000/3444) IV size: 8 bytes replay detection support: Y
inbound ah sas: inbound pcp sas: outbound esp sas: spi: 0x77AFCCFA(2008009978) transform: esp-
3des esp-sha-hmac , in use settings = {Tunnel, } slot: 0, conn id: 2001, flow_id: 2, crypto map:
clientmap sa timing: remaining key lifetime (k/sec): (4608000/3444) IV size: 8 bytes replay
detection support: Y outbound ah sas: outbound pcp sas: local ident (addr/mask/prot/port):
(172.18.124.0/255.255.255.0/0/0) remote ident (addr/mask/prot/port):
(10.16.20.2/255.255.255.255/0/0) current_peer: 10.0.0.1 PERMIT, flags={} #pkts encaps: 4, #pkts
encrypt: 4, #pkts digest 4 #pkts decaps: 6, #pkts decrypt: 6, #pkts verify 6 #pkts compressed:
0, #pkts decompressed: 0 #pkts not compressed: 0, #pkts compr. failed: 0, #pkts decompress
failed: 0 #send errors 0, #recv errors 0 local crypto endpt.: 10.1.1.1, remote crypto endpt.:
10.0.0.1 path mtu 1500, media mtu 1500 current outbound spi: 2EE5BF09 inbound esp sas: spi:
0x3565451F(895829279) transform: esp-3des esp-sha-hmac , in use settings = {Tunnel, } slot: 0,
conn id: 2002, flow_id: 3, crypto map: clientmap sa timing: remaining key lifetime (k/sec):
(4607999/3469) IV size: 8 bytes replay detection support: Y inbound ah sas: inbound pcp sas:
outbound esp sas: spi: 0x2EE5BF09(786808585) transform: esp-3des esp-sha-hmac , in use settings
={Tunnel, } slot: 0, conn id: 2003, flow_id: 4, crypto map: clientmap sa timing: remaining key
lifetime (k/sec): (4607999/3469) IV size: 8 bytes replay detection support: Y outbound ah sas:
outbound pcp sas: vpn2621#show crypto engine connections active ID Interface IP-Address State
Algorithm Encrypt Decrypt 3 Ethernet0/0 10.1.1.1 set HMAC_SHA+3DES_56_C 0 0 2000 Ethernet0/0
10.1.1.1 set HMAC_SHA+3DES_56_C 0 5 2001 Ethernet0/0 10.1.1.1 set HMAC_SHA+3DES_56_C 5 0 2002
Ethernet0/0 10.1.1.1 set HMAC_SHA+3DES_56_C 0 6 2003 Ethernet0/0 10.1.1.1 set HMAC_SHA+3DES_56_C
4 0 vpn2621#show crypto engine accelerator statistic Virtual Private Network (VPN) Module in aim
slot : 0 Statistics for Hardware VPN Module since the last clear of counters 5570 seconds ago 14
packets in 14 packets out 0 packet overruns 0 output packets dropped 0 packets decompressed 0
packets compressed 0 compressed bytes in 0 uncompressed bytes in 0 decompressed bytes out 0
compressed bytes out 0 packets bypass compression 0 packets abort compression 0 packets fail
decompression 0 packets fail compression 7 packets decrypted 7 packets encrypted 532 bytes
decrypted 532 bytes encrypted 784 bytes before decrypt 19200 bytes after encrypt 0 paks/sec in 0
paks/sec out 0 Kbits/sec decrypted 0 Kbits/sec encrypted Last 5 minutes: 14 packets in 14
packets out 7 packets decrypted 7 packets encrypted 532 bytes decrypted 420 bytes encrypted 784
bytes before decrypt 672 bytes after encrypt 0 paks/sec in 0 paks/sec out 0 Kbits/sec decrypted
0 Kbits/sec encrypted rx_no_endp: 0 rx_hi_discards: 0 fw_failure: 0 invalid_sa: 0 invalid_flow:
0 cgx_errors 0 fw_qs_filled: 0 fw_resource_lock: 0 lotx_full_err: 0 null_ip_error: 0
pad_size_error: 0 out_bound_dh_acc: 0 esp_auth_fail: 0 ah_auth_failure: 0 crypto_pad_error: 0
ah_prot_absent: 0 ah_seq_failure: 0 ah_spi_failure: 0 esp_prot_absent: 0 esp_seq_fail: 0
esp_spi_failure: 0 obound_sa_acc: 0 invalid_sa: 0 out_bound_sa_flow: 0 invalid_dh: 0
bad_keygroup: 0 out_of_memory: 0 no_sh_secret: 0 no_skeys: 0 invalid_cmd: 0 dsp_coproc_err: 0
comp_unsupported: 0 pak_too_big: 0 null_packets: 0 pak_mp_length_spec_fault: 0 cmd queue errors:
0 tx_lo_queue_size_max 0 cmd_unimplemented: 0 Interrupts: 439 Immed: 0 HiPri ints: 14 LoPri
ints: 425 POST Errs: 0 Alerts: 0 Unk Cmds: 0 UnexpCmds: 0 cgx_cmd_pending:0 packet_loop_max:
0packet_loop_limit: 0 vpn2621#sh crypto engine configuration crypto engine name: Virtual Private
Network (VPN) Module crypto engine type: hardware Product Name: AIM-VPN/BP Configuration:
0x000109010F00F00784000000 : 0x995FB1441BA279D5BD46CF6C : 0xECE77614C30835CB0A000300 :
0x00000000000000000000000000000000 CryptIC Version: 001.000 CGX Version: 001.009 CGX Reserved: 0x000F
PCDB info: 0x07F0 0x0084 0x0000 Serial Number: 0x5F9944B1A21BD57946BD : 0x6CCFE7EC14768C3CB35
DSP firmware version: 000.010 DSP Bootstrap Version: 000.003 DSP Bootstrap Info: 0x0000
Compression: Yes DES: Yes 3 DES: Yes AES CBC: No AES CNTR: No Maximum buffer length: 4096
Maximum DH index: 0210 Maximum SA index: 0420 Maximum Flow index: 0840 Maximum RSA key size:
0000 crypto engine in slot: 0 platform: VPN hardware accelerator Crypto Adjacency Counts: Lock
Count: 0 Unlock Count: 0 crypto lib version: 16.0.0 ipsec lib version: 2.0.0
```

# Dépannez

Utilisez cette section pour dépanner votre configuration.

## Dépannage des commandes

L'[Outil Interpréteur de sortie](#) (clients [enregistrés](#) uniquement) (OIT) prend en charge certaines commandes **show**. Utilisez l'OIT pour afficher une analyse de la sortie de la commande **show**.

**Remarque:** Référez-vous aux [informations importantes sur les commandes de débogage](#) avant d'utiliser les commandes de **débogage**.

- **debug crypto ipsec** — Affiche des informations de débogage sur les connexions IPsec.
- **debug crypto isakmp** — Les affichages mettent au point des informations sur des connexions d'IPsec, et affichent le premier ensemble d'attributs qui est refusé en raison des incompatibilités sur les deux extrémités.
- **debug crypto engine** — Affiche des informations du moteur de chiffrement.
- **debug aaa authentication** — Affiche des informations sur l'authentification du Terminal Access Controller Access Control System Plus D.C.A. (TACACS+).
- **raduis d'autorisation de debug aaa** — Affiche des informations sur l'autorisation AAA/TACACS+.
- **debug radius** — Affiche des informations sur la transmission de débogage entre le serveur de RAYON et le routeur.

## Sortie de débogage

Cette section fournit des informations du routeur que vous pouvez utiliser pour dépanner votre configuration.

### Journaux du routeur

```
vpn2621#show debug General OS: AAA Authentication debugging is on AAA Authorization debugging is on Radius protocol debugging is on Radius packet protocol debugging is on Cryptographic Subsystem: Crypto ISAKMP debugging is on Crypto Engine debugging is on Crypto IPSEC debugging is on vpn2621# *ISAKMP (0:0): received packet from 10.0.0.1 dport 500 sport 500 Global (N) NEW SA *ISAKMP: Created a peer struct for 10.0.0.1, peer port 500 *ISAKMP: Locking peer struct 0x83166B20, IKE refcount 1 for crypto_ikmp_config_initialize_sa *ISAKMP (0:0): Setting client config settings 82F0F82C *ISAKMP (0:0): (Re)Setting client xauth list and state *ISAKMP: local port 500, remote port 500 *ISAKMP: insert sa successfully sa = 83165694 *ISAKMP (0:1): processing SA payload. message ID = 0 *ISAKMP (0:1): processing ID payload. message ID = 0 *ISAKMP (0:1): peer matches *none* of the profiles *ISAKMP (0:1): processing vendor id payload *ISAKMP (0:1): vendor ID seems Unity/DPD but major 215 mismatch *ISAKMP (0:1): vendor ID is XAUTH *ISAKMP (0:1): processing vendor id payload *ISAKMP (0:1): vendor ID is DPD *ISAKMP (0:1): processing vendor id payload *ISAKMP (0:1): vendor ID seems Unity/DPD but major 123 mismatch *ISAKMP (0:1): vendor ID is NAT-T v2 *ISAKMP (0:1): processing vendor id payload *ISAKMP (0:1): vendor ID seems Unity/DPD but major 194 mismatch *ISAKMP (0:1): processing vendor id payload *ISAKMP (0:1): vendor ID is Unity *ISAKMP (0:1) Authentication by xauth preshared *ISAKMP (0:1): Checking ISAKMP transform 1 against priority 3 policy *ISAKMP: encryption AES-CBC *ISAKMP: hash SHA *ISAKMP: default group 2 *ISAKMP: auth XAUTHInitPreShared *ISAKMP: life type in seconds *ISAKMP: life duration (VPI) of 0x0 0x20 0xC4 0x9B *ISAKMP: keylength of 256 *ISAKMP (0:1): Encryption algorithm offered does not match policy! /en/US/docs/net_mgmt/wan_service_administrator/1.1/administrator/guide/getstart.html - snip/en/US/docs/net_mgmt/wan_service_administrator/1.1/administrator/guide/getstart.html
```

/en/US/docs/net\_mgmt/wan\_service\_administrator/1.1/administrator/guide/getstart.html  
/en/US/docs/net\_mgmt/wan\_service\_administrator/1.1/administrator/guide/getstart.html *!--- ISAKMP values are acceptable and then the router continues with the !--- ISAKMP negotiation process.*

**\*ISAKMP (0:1): Checking ISAKMP transform 9 against priority 3 policy \*ISAKMP: encryption 3DES-CBC \*ISAKMP: hash SHA \*ISAKMP: default group 2 \*ISAKMP: auth XAUTHInitPreShared \*ISAKMP: life type in seconds \*ISAKMP: life duration (VPI) of 0x0 0x20 0xC4 0x9B \*ISAKMP (0:1): atts are acceptable. Next payload is 3 \*CryptoEngine0: generate alg parameter \*CryptoEngine0: CRYPTO\_ISA\_DH\_CREATE(hw)(ipsec) \*CRYPTO\_ENGINE: Dh phase 1 status: 0 \*ISAKMP (0:1): processing KE payload. message ID = 0 \*CryptoEngine0: generate alg parameter \*CryptoEngine0: CRYPTO\_ISA\_DH\_SHARE\_SECRET(hw)(ipsec) \*ISAKMP (0:1): processing NONCE payload. message ID = 0 \*ISAKMP (0:1): vendor ID is NAT-T v2 \*AAA: parse name=ISAKMP-ID-AUTH idb type=-1 tty=-1 \*AAA/MEMORY: create\_user (0x830E12E8) user='3000client' ruser='NULL' ds0=0 port='ISAKMP-ID-AUTH' rem\_addr='10.0.0.1' authen\_type=NONE service=LOGIN priv=0 initial\_task\_id='0', vrf= (id=0) \*ISAKMP (0:1): Input = IKE\_MSG\_FROM\_PEER, IKE\_AM\_EXCH \*ISAKMP (0:1): Old State = IKE\_READY New State = IKE\_R\_AM\_AAA\_AWAIT \*ISAKMP-ID-AUTH AAA/AUTHOR/CRYPTO AAA(54534875): Port='ISAKMP-ID-AUTH' list='groupauthor' service=NET \*AAA/AUTHOR/CRYPTO AAA: ISAKMP-ID-AUTH(54534875) user='3000client' \*ISAKMP-ID-AUTH AAA/AUTHOR/CRYPTO AAA(54534875): send AV service=ike \*ISAKMP-ID-AUTH AAA/AUTHOR/CRYPTO AAA(54534875): send AV protocol=ipsec \*ISAKMP-ID-AUTH AAA/AUTHOR/CRYPTO AAA(54534875): found list "groupauthor" \*ISAKMP-ID-AUTH AAA/AUTHOR/CRYPTO AAA(54534875): Method=LOCAL \*AAA/AUTHOR (54534875): Post authorization status = PASS\_ADD \*ISAKMP: got callback 1 \* AAA/AUTHOR/IKE: Processing AV service=ike \* AAA/AUTHOR/IKE: Processing AV protocol=ipsec \* AAA/AUTHOR/IKE: Processing AV tunnel-password=cisco123 \* AAA/AUTHOR/IKE: Processing AV default-domain\*cisco.com \* AAA/AUTHOR/IKE: Processing AV addr-pool\*ippool \* AAA/AUTHOR/IKE: Processing AV key-exchange=ike \* AAA/AUTHOR/IKE: Processing AV group-lock\*0 \* AAA/AUTHOR/IKE: Processing AV timeout\*0 \* AAA/AUTHOR/IKE: Processing AV idletime\*0 \* AAA/AUTHOR/IKE: Processing AV inacl\*108 \* AAA/AUTHOR/IKE: Processing AV dns-servers\*10.1.1.10 0.0.0.0 \* AAA/AUTHOR/IKE: Processing AV wins-servers\*10.1.1.20 0.0.0.0 \*CryptoEngine0: create ISAKMP SKEYID for conn id 1 \*CryptoEngine0: CRYPTO\_ISA\_SA\_CREATE(hw)(ipsec) \*ISAKMP (0:1): SKEYID state generated \*ISAKMP (0:1): constructed NAT-T vendor-02 ID \*ISAKMP (0:1): SA is doing pre-shared key authentication plus XAUTH using id type ID\_IPV4\_ADDR \*ISAKMP (1): ID payload next-payload : 10 type : 1 addr : 10.1.1.1 protocol : 17 port : 0 length : 8 \*ISAKMP (1): Toine0: CRYPTO\_ISA\_IKE\_DECRYPT(hw)(ipsec) \*ISAKMP (0:1): processing HASH payload. message ID = 0 \*CryptoEngine0: generate hmac context for conn id 1 \*CryptoEngine0: CRYPTO\_ISA\_IKE\_HMAC(hw)(ipsec)tal payload length: 12 \*CryptoEngine0: generate hmac conte \*ISAKMP (0:1): processing NOTIFY INITIAL\_CONTACT protocol 1 spi 0, message ID = 0, sa = 83165694 \*ISAKMP (0:1): Process initial contact, bring down existing phase 1 and 2 SA's with local 10.1.1.1 remote 10.0.0.1 remote port 500 \*ISAKMP (0:1): returning IP addr to the address pool \*ISAKMP:received payload type 17 \*ISAKMP (0:1): Detected NAT-D payload \*ISAKMP (0:1): recalc my hash for NAT-D \*ISAKMP (0:1): NAT match MINE hash \*ISAKMP:received payload type 17xt for conn id 1 \*CryptoEngine0: CRYPTO\_ISA\_IKE\_HMAC(hw)(ipsec) \*ISAKMP (0:1): constructed HIS NAT-D \*ISAKMP (0:1): constructed MINE NAT-D \*ISAKMP (0:1): sending packet to 10.0.0.1 my\_port 500 peer\_port 500 (R) AG\_INIT\_EXCH \*ISAKMP (0:1): Input = IKE\_MSG\_FROM\_AAA, PRESHARED\_KEY\_REPLY \*ISAKMP (0:1): Old State = IKE\_R\_AM\_AAA\_AWAIT New State = IKE\_R\_AM2 \*AAA/MEMORY: free\_user (0x830E12E8) user='3000client' ruser='NULL' port='ISAKMP-ID-AUTH' rem\_addr='10.0.0.1' authen\_type=NONE service=LOGIN priv=0 vrf= (id=0) \*ISAKMP (0:1): received packet from 10.0.0.1 dport 500 sport 500 Global (R) AG\_INIT\_EXCH \*CryptoEng \*ISAKMP (0:1): Detected NAT-D payload \*ISAKMP (0:1): recalc his hash for NAT-D \*ISAKMP (0:1): NAT match HIS hash \*ISAKMP (0:1): SA has been authenticated with 10.0.0.1 \*CryptoEngine0: clear dh number for conn id 1 \*ISAKMP: Trying to insert a peer 10.0.0.1/500/, and inserted successfully. \*ISAKMP (0:1): IKE\_DPD is enabled, initializing timers \*ISAKMP: set new node 2011892843 to CONF\_XAUTH \*CryptoEngine0: generate hmac context for conn id 1 \*CryptoEngine0: CRYPTO\_ISA\_IKE\_HMAC(hw)(ipsec) \*IPSEC(key\_engine): got a queue event... \*CryptoEngine0: CRYPTO\_ISA\_DH\_DELETE(hw)(ipsec) \*CryptoEngine0: CRYPTO\_ISA\_IKE\_ENCRYPT(hw)(ipsec) \*ISAKMP (0:1): sending packet to 10.0.0.1 my\_port 500 peer\_port 500 (R) QM\_IDLE \*ISAKMP (0:1): purging node 2011892843 \*ISAKMP: Sending phase 1 responder lifetime 86400 \*ISAKMP (0:1): peer matches \*none\* of the profiles \*ISAKMP (0:1): Input = IKE\_MSG\_FROM\_PEER, IKE\_AM\_EXCH \*ISAKMP (0:1): Old State = IKE\_R\_AM2 New State = IKE\_P1\_COMPLETE \*ISAKMP (0:1): Need XAUTH \*AAA: parse name=ISAKMP idb type=-1 tty=-1 \*AAA/MEMORY: create\_user (0x830DE43C) user='NULL' ruser='NULL' ds0=0 port='ISAKMP' rem\_addr='10.0.0.1' authen\_type=ASCII service=LOGIN priv=0 initial\_task\_id='0', vrf= (id=0) \*ISAKMP (0:1): Input = IKE\_MSG\_INTERNAL, **IKE\_PHASE1\_COMPLETE** \*ISAKMP (0:1): Old State = IKE\_P1\_COMPLETE New State = IKE\_XAUTH\_AAA\_START\_LOGIN\_AWAIT \*AAA/AUTHEN/START (992119247): port='ISAKMP' list='userauthen' action=LOGIN service=LOGIN \*AAA/AUTHEN/START (992119247): found list userauthen \*AAA/AUTHEN/START (992119247): Method=radius (radius) \*AAA/AUTHEN(992119247): Status=GETUSER \*ISAKMP: got callback 1 \*ISAKMP: set new node -883516238 to CONF\_XAUTH**

\*ISAKMP/xauth: request attribute XAUTH\_USER\_NAME\_V2 \*ISAKMP/xauth: request attribute XAUTH\_USER\_PASSWORD\_V2 \*CryptoEngine0: generate hmac context for conn id 1 \*CryptoEngine0: CRYPTO\_ISA\_IKE\_HMAC(hw)(ipsec) \*ISAKMP (0:1): initiating peer config to 10.0.0.1. ID = -883516238 \*CryptoEngine0: CRYPTO\_ISA\_IKE\_ENCRYPT(hw)(ipsec) \*ISAKMP (0:1): sending packet to 10.0.0.1 my\_port 500 peer\_port 500 (R) CONF\_XAUTH \*ISAKMP (0:1): Input = IKE\_MSG\_FROM\_AAA, IKE\_AAA\_START\_LOGIN \*ISAKMP (0:1): Old State = IKE\_XAUTH\_AAA\_START\_LOGIN\_AWAIT New State = IKE\_XAUTH\_REQ\_SENT \*ISAKMP (0:1): retransmitting phase 2 CONF\_XAUTH -883516238 ... \*ISAKMP (0:1): incrementing error counter on sa: retransmit phase 2 \*ISAKMP (0:1): incrementing error counter on sa: retransmit phase 2 \*ISAKMP (0:1): retransmitting phase 2 -883516238 CONF\_XAUTH \*ISAKMP (0:1): sending packet to 10.0.0.1 my\_port 500 peer\_port 500 (R) CONF\_XAUTH \*ISAKMP (0:1): received packet from 10.0.0.1 dport 500 sport 500 Global (R) CONF\_XAUTH \*CryptoEngine0: CRYPTO\_ISA\_IKE\_DECRYPT(hw)(ipsec) \*ISAKMP (0:1): processing transaction payload from 10.0.0.1. message ID = -883516238 \*CryptoEngine0: generate hmac context for conn id 1 \*CryptoEngine0: CRYPTO\_ISA\_IKE\_HMAC(hw)(ipsec) \*ISAKMP: Config payload REPLY \*ISAKMP/xauth: reply attribute XAUTH\_USER\_NAME\_V2 \*ISAKMP/xauth: reply attribute XAUTH\_USER\_PASSWORD\_V2 \*ISAKMP (0:1): deleting node -883516238 error FALSE reason "done with xauth request/reply exchange" \*ISAKMP (0:1): Input = IKE\_MSG\_FROM\_PEER, IKE\_CFG\_REPLY \*ISAKMP (0:1): Old State = IKE\_XAUTH\_REQ\_SENT New State = IKE\_XAUTH\_AAA\_CONT\_LOGIN\_AWAIT \*AAA/AUTHEN/CONT (992119247): continue\_login (user='(undef)') \*AAA/AUTHEN(992119247): Status=GETUSER \*AAA/AUTHEN(992119247): Method=radius (radius) \*AAA/AUTHEN(992119247): Status=GETPASS \*AAA/AUTHEN/CONT (992119247): continue\_login (user='cisco') \*AAA/AUTHEN(992119247): Status=GETPASS \*AAA/AUTHEN(992119247): Method=radius (radius) \*RADIUS: Pick NAS IP for u=0x830DE43C tableid=0 cfg\_addr=0.0.0.0 best\_addr=10.1.1.1 \*RADIUS: ustruct sharecount=2 \*Radius: radius\_port\_info() success=0 radius\_nas\_port=1 \*RADIUS(00000000): **Send Access-Request to 172.18.124.96:1645 id 21645/4, len 72** \*RADIUS: authenticator F2 7F ED 86 2B D9 80 1F - 74 D7 8F 90 3B EF F0 D5 \*RADIUS: NAS-IP-Address [4] 6 10.1.1.1 \*RADIUS: NAS-Port-Type [61] 6 Async [0] \*RADIUS: User-Name [1] 9 "cisco" \*RADIUS: Calling-Station-Id [31] 13 "10.0.0.1" \*RADIUS: User-Password [2] 18 \* \*RADIUS: Retransmit to (172.18.124.96:1645,1646) for id 21645/4 \*RADIUS: **Received from id 21645/4 172.18.124.96:1645, Access-Accept, len 62** \*RADIUS: authenticator 97 DF CB C8 74 AC 92 D6 - 3B D8 D9 DC 9E 85 94 35 \*RADIUS: Framed-IP-Address [8] 6 172.17.8.123 \*RADIUS: Class [25] 36 \*RADIUS: 43 49 53 43 4F 41 43 53 3A 30 30 30 30 31 38 32 [CISCOACS:0000182] \*RADIUS: 62 2F 61 63 31 32 37 63 39 66 2F 74 6E 65 75 62 [b/ac127c9f/cisco] \*RADIUS: 65 72 \*RADIUS: saved authorization data for user 830DE43C at 830DB5FC \*AAA/AUTHEN(992119247): Status=PASS \*ISAKMP: got callback 1 \*ISAKMP: set new node -1874799558 to CONF\_XAUTH \*CryptoEngine0: generate hmac context for conn id 1 \*CryptoEngine0: CRYPTO\_ISA\_IKE\_HMAC(hw)(ipsec) \*ISAKMP (0:1): initiating peer config to 10.0.0.1. ID = -1874799558 \*CryptoEngine0: CRYPTO\_ISA\_IKE\_ENCRYPT(hw)(ipsec) \*ISAKMP (0:1): sending packet to 10.0.0.1 my\_port 500 peer\_port 500 (R) CONF\_XAUTH \*ISAKMP (0:1): Input = IKE\_MSG\_FROM\_AAA, IKE\_AAA\_CONT\_LOGIN \*ISAKMP (0:1): Old State = IKE\_XAUTH\_AAA\_CONT\_LOGIN\_AWAIT New State = IKE\_XAUTH\_SET\_SENT \*AAA/MEMORY: free\_user (0x830DE43C) user='cisco' ruser='NULL' port='ISAKMP' rem\_addr='10.0.0.1' authen\_type=ASCII service=LOGIN priv=0 vrf= (id=0) \*ISAKMP (0:1): received packet from 10.0.0.1 dport 500 sport 500 Global (R) CONF\_XAUTH \*CryptoEngine0: CRYPTO\_ISA\_IKE\_DECRYPT(hw)(ipsec) \*ISAKMP (0:1): processing transaction payload from 10.0.0.1. message ID = -1874799558 \*CryptoEngine0: generate hmac context for conn id 1 \*CryptoEngine0: CRYPTO\_ISA\_IKE\_HMAC(hw)(ipsec) \*ISAKMP: Config payload ACK \*ISAKMP (0:1): XAUTH ACK Processed \*ISAKMP (0:1): deleting node -1874799558 error FALSE reason "done with transaction" \*ISAKMP (0:1): Input = IKE\_MSG\_FROM\_PEER, IKE\_CFG\_ACK \*ISAKMP (0:1): Old State = IKE\_XAUTH\_SET\_SENT New State = IKE\_P1\_COMPLETE \*ISAKMP (0:1): Input = IKE\_MSG\_INTERNAL, IKE\_PHASE1\_COMPLETE \*ISAKMP (0:1): Old State = IKE\_P1\_COMPLETE New State = IKE\_P1\_COMPLETE \*ISAKMP (0:1): received packet from 10.0.0.1 dport 500 sport 500 Global (R) QM\_IDLE \*ISAKMP: set new node -1474156599 to QM\_IDLE \*CryptoEngine0: CRYPTO\_ISA\_IKE\_DECRYPT(hw)(ipsec) \*ISAKMP (0:1): processing transaction payload from 10.0.0.1. message ID = -1474156599 \*CryptoEngine0: generate hmac context for conn id 1 \*CryptoEngine0: CRYPTO\_ISA\_IKE\_HMAC(hw)(ipsec) \*ISAKMP: Config payload REQUEST \*ISAKMP (0:1): checking request: \*ISAKMP: IP4\_ADDRESS \*ISAKMP: IP4\_NETMASK \*ISAKMP: IP4\_DNS \*ISAKMP: IP4\_NBNS \*ISAKMP: ADDRESS\_EXPIRY \*ISAKMP: APPLICATION\_VERSION \*ISAKMP: UNKNOWN Unknown Attr: 0x7000 \*ISAKMP: UNKNOWN Unknown Attr: 0x7001 \*ISAKMP: DEFAULT\_DOMAIN \*ISAKMP: SPLIT\_INCLUDE \*ISAKMP: UNKNOWN Unknown Attr: 0x7003 \*ISAKMP: UNKNOWN Unknown Attr: 0x7007 \*ISAKMP: UNKNOWN Unknown Attr: 0x7008 \*ISAKMP: UNKNOWN Unknown Attr: 0x7009 \*ISAKMP: UNKNOWN Unknown Attr: 0x700A \*ISAKMP: UNKNOWN Unknown Attr: 0x7005 \*AAA: parse name=ISAKMP-GROUP-AUTH idb type=-1 tty=-1 \*AAA/MEMORY: create\_user (0x831663A0) user='3000client' ruser='NULL' ds0=0 port='ISAKMP-GROUP-AUTH' rem\_addr='10.0.0.1' authen\_type=NONE service=LOGIN priv=0 initial\_task\_id='0', vrf= (id=0) \*ISAKMP (0:1): Input = IKE\_MSG\_FROM\_PEER, IKE\_CFG\_REQUEST \*ISAKMP (0:1): Old State = IKE\_P1\_COMPLETE New State = IKE\_CONFIG\_AUTHOR\_AAA\_AWAIT \*ISAKMP-GROUP-AUTH AAA/AUTHOR/CRYPTO AAA(3136771130): Port='ISAKMP-GROUP-AUTH' list='groupauthor' service=NET \*AAA/AUTHOR/CRYPTO AAA: ISAKMP-GROUP-AUTH(3136771130) user='3000client' \*ISAKMP-GROUP-AUTH AAA/AUTHOR/CRYPTO



AAA(3136771130): send AV service=ike \*ISAKMP-GROUP-AUTH AAA/AUTHOR/CRYPTO AAA(3136771130): send AV protocol=ipsec \*ISAKMP-GROUP-AUTH AAA/AUTHOR/CRYPTO AAA(3136771130): found list "groupauthor" \*ISAKMP-GROUP-AUTH AAA/AUTHOR/CRYPTO AAA(3136771130): Method=LOCAL \*AAA/AUTHOR (3136771130): Post authorization status = PASS\_ADD \*ISAKMP: got callback 1 \* AAA/AUTHOR/IKE: Processing AV service=ike \* AAA/AUTHOR/IKE: Processing AV protocol=ipsec \* AAA/AUTHOR/IKE: Processing AV tunnel-password=cisco123 \* AAA/AUTHOR/IKE: Processing AV default-domain\*cisco.com \* AAA/AUTHOR/IKE: Processing AV addr-pool\*ippool \* AAA/AUTHOR/IKE: Processing AV key-exchange=ike \* AAA/AUTHOR/IKE: Processing AV group-lock\*0 \* AAA/AUTHOR/IKE: Processing AV timeout\*0 \* AAA/AUTHOR/IKE: Processing AV idletime\*0 \* AAA/AUTHOR/IKE: Processing AV inacl\*108 \* AAA/AUTHOR/IKE: Processing AV dns-servers\*10.1.1.10 0.0.0.0 \* AAA/AUTHOR/IKE: Processing AV wins-servers\*10.1.1.20 0.0.0.0 \*ISAKMP (0:1): attributes sent in message: \* Address: 0.2.0.0 \*ISAKMP (0:1): allocating address 10.16.20.1 \*ISAKMP: Sending private address: 10.16.20.1 \*ISAKMP: Sending IP4\_DNS server address: 10.1.1.10 \*ISAKMP: Sending IP4\_NBNS server address: 10.1.1.20 \*ISAKMP: Sending ADDRESS\_EXPIRY seconds left to use the address: 86388 \*ISAKMP: Sending APPLICATION\_VERSION string: Cisco Internetwork Operating System Software IOS (tm) C2600 Software (C2600-IK9S-M), Version 12.2(15)T2, RELEASE SOFTWARE (fc2) TAC Support: http://www.cisco.com/tac Copyright (c) 1986-2003 by cisco Systems, Inc. Compiled Thu 01-May-03 10:39 by nmasa \*ISAKMP (0/1): Unknown Attr: UNKNOWN (0x7000) \*ISAKMP (0/1): Unknown Attr: UNKNOWN (0x7001) \*ISAKMP: Sending DEFAULT\_DOMAIN default domain name: cisco.com \*ISAKMP: Sending split include name 108 network 172.18.124.0 mask 255.255.255.0 protocol 0, src port 0, dst port 0 \*ISAKMP (0/1): Unknown Attr: UNKNOWN (0x7003) \*ISAKMP (0/1): Unknown Attr: UNKNOWN (0x7007) \*ISAKMP (0/1): Unknown Attr: UNKNOWN (0x7008) \*ISAKMP (0/1): Unknown Attr: UNKNOWN (0x7009) \*ISAKMP (0/1): Unknown Attr: UNKNOWN (0x700A) \*ISAKMP (0/1): Unknown Attr: UNKNOWN (0x7005) \*CryptoEngine0: generate hmac context for conn id 1 \*CryptoEngine0: CRYPTO\_ISA\_IKE\_HMAC(hw)(ipsec) \*ISAKMP (0:1): responding to peer config from 10.0.0.1. ID = -1474156599 \*CryptoEngi\*ISAKMP (0:1): deleting node -1474156599 error FALSE reason "ne0: CRYPTO\_ISA\_IKE\_ENCRYPT(hw)(ipsec) \*ISAKMP (0:1): sending packet to 10.0.0.1 my\_por231 \*ISAKMP (0:1): processing SA payload. message ID = 2058744231 \*ISAKMP (0:1): Checking IPsec proposal 1 \*ISAKMP: transform 1, ESP\_AES \*ISAKMP: attributes in transform: \*ISAKMP: authenticator is HMAC-MD5 \*ISAKMP: encaps is 1 \*ISAKMP: key length is 256t 500 peer\_port 500 (R) CONF\_ADDR \*ISAKMP (0:1): Input = IKE\_MSG\_FROM\_AAA, IKE\_AAA\_GROUP\_ATTR \*ISAKMP (0:1): Old State = IKE\_CONFIG\_AUTHOR\_AAA\_AWAIT New State = IKE\_P1\_COMPLETE \*AAA/MEMORY: free\_user (0x831663A0) user='3000client' ruser=NULL' port='ISAKMP-GROUP-AUTH' rem\_addr='10.0.0.1' authen\_type=NONE service=LOGIN priv=0 vrf=(id=0) \*ISAKMP (0:1): received packet from 10.0.0.1 dport 500 sport 500 Global (R) QM\_IDLE \*ISAKMP: set new node 2058744231 to QM\_IDLE \*CryptoEngine0: CRYPTO\_ISA\_IKE\_DECRYPT(hw)(ipsec) \*CryptoEngine0: generate hmac context for conn id 1 \*CryptoEngine0: CRYPTO\_ISA\_IKE\_HMAC(hw)(ipsec) \*ISAKMP (0:1): processing HASH payload. message ID = 2058744 \*ISAKMP: SA life type in seconds \*ISAKMP: SA life duration (VPI) of 0x0 0x20 0xC4 0x9B \*CryptoEngine0: validate proposal \*ISAKMP (0:1): atts are acceptable. \*ISAKMP (0:1): Checking IPsec proposal 1 \*ISAKMP (0:1): transform 1, IPPCP LZS \*ISAKMP: attributes in transform: \*ISAKMP: encaps is 1 \*ISAKMP: SA life type in seconds \*ISAKMP: SA life duration (VPI) of 0x0 0x20 0xC4 0x9B \*ISAKMP (0:1): atts are acceptable. \*IPSEC(validate\_proposal\_request): proposal part #1, (key eng. msg.) INBOUND local= 10.1.1.1, remote= 10.0.0.1, local\_proxy= 10.1.1.1/255.255.255.255/0/0 (type=1), remote\_proxy= 10.16.20.1/255.255.255.255/0/0 (type=1), protocol= ESP, transform= esp-aes 256 esp-md5-hmac , lifedur= 0s and 0kb, spi= 0x0(0), conn\_id= 0, keysize= 256, flags= 0x2 \*IPSEC(validate\_proposal\_request): proposal part #2, (key eng. msg.) INBOUND local= 10.1.1.1, remote= 10.0.0.1, local\_proxy= 10.1.1.1/255.255.255.255/0/0 (type=1), remote\_proxy= 10.16.20.1/255.255.255.255/0/0 (type=1), protocol= PCP, transform= comp-lzs , lifedur= 0s and 0kb, spi= 0x0(0), conn\_id= 0, keysize= 0, flags= 0x2 \*CryptoEngine0: validate proposal request \*IPSEC(kei\_proxy): head = clientmap, map->ivrf = , kei->ivrf = \*IPSEC(validate\_transform\_proposal): transform proposal not supported for identity: {esp-aes 256 esp-md5-hmac comp-lzs } \*ISAKMP (0:1): IPsec policy invalidated proposal \*ISAKMP (0:1): Checking IPsec proposal 2 \*ISAKMP: transform 1, ESP\_AES \*ISAKMP: attributes in transform: \*ISAKMP: authenticator is HMAC-SHA \*ISAKMP: encaps is 1 \*ISAKMP: key length is 256 \*ISAKMP: SA life type in seconds \*ISAKMP: SA life duration (VPI) of 0x0 0x20 0xC4 0x9B \*CryptoEngine0: validate proposal \*ISAKMP (0:1): atts are acceptable. \*ISAKMP (0:1): Checking IPsec proposal 2 \*ISAKMP (0:1): transform 1, IPPCP LZS \*ISAKMP: attributes in transform: \*ISAKMP: encaps is 1 \*ISAKMP: SA life type in seconds \*ISAKMP: SA life duration (VPI) of 0x0 0x20 0xC4 0x9B \*ISAKMP (0:1): atts are acceptable. \*IPSEC(validate\_proposal\_request): proposal part #1, (key eng. msg.) INBOUND local= 10.1.1.1, remote= 10.0.0.1, local\_proxy= 10.1.1.1/255.255.255.255/0/0 (type=1), remote\_proxy= 10.16.20.1/255.255.255.255/0/0 (type=1), protocol= ESP, transform= esp-aes 256 esp-sha-hmac , lifedur= 0s and 0kb, spi= 0x0(0), conn\_id= 0, keysize= 256, flags= 0x2 \*IPSEC(validate\_proposal\_request): proposal part #2, (key eng. msg.) INBOUND local= 10.1.1.1, remote= 10.0.0.1, local\_proxy= 10.1.1.1/255.255.255.255/0/0 (type=1), remote\_proxy=

10.16.20.1/255.255.255.255/0/0 (type=1), protocol= PCP, transform= comp-lzs , lifedur= 0s and 0kb, spi= 0x0(0), conn\_id= 0, keysize= 0, flags= 0x2 \*CryptoEngine0: validate proposal request \*IPSEC(kei\_proxy): head = clientmap, map->ivrf = , kei->ivrf =  
\*IPSEC(validate\_transform\_proposal): transform proposal not supported for identity: {esp-aes 256 esp-sha-hmac comp-lzs } \*ISAKMP (0:1): IPsec policy invalidated proposal \*ISAKMP (0:1): Checking IPsec proposal 3 \*ISAKMP: transform 1, ESP\_AES \*ISAKMP: attributes in transform: \*ISAKMP: authenticator is HMAC-MD5 \*ISAKMP: encaps is 1 \*ISAKMP: key length is 128 \*ISAKMP: SA life type in seconds \*ISAKMP: SA life duration (VPI) of 0x0 0x20 0xC4 0x9B \*CryptoEngine0: validate proposal \*ISAKMP (0:1): atts are acceptable. \*ISAKMP (0:1): Checking IPsec proposal 3 \*ISAKMP (0:1): transform 1, IPPCP LZS \*ISAKMP: attributes in transform: \*ISAKMP: encaps is 1 \*ISAKMP: SA life type in seconds \*ISAKMP: SA life duration (VPI) of 0x0 0x20 0xC4 0x9B \*ISAKMP (0:1): atts are acceptable. \*IPSEC(validate\_proposal\_request): proposal part #1, (key eng. msg.) INBOUND local= 10.1.1.1, remote= 10.0.0.1, local\_proxy= 10.1.1.1/255.255.255.255/0/0 (type=1), remote\_proxy= 10.16.20.1/255.255.255.255/0/0 (type=1), protocol= ESP, transform= esp-aes esp-md5-hmac , lifedur= 0s and 0kb, spi= 0x0(0), conn\_id= 0, keysize= 128, flags= 0x2  
\*IPSEC(validate\_proposal\_request): proposal part #2, (key eng. msg.) INBOUND local= 10.1.1.1, remote= 10.0.0.1, local\_proxy= 10.1.1.1/255.255.255.255/0/0 (type=1), remote\_proxy= 10.16.20.1/255.255.255.255/0/0 (type=1), protocol= PCP, transform= comp-lzs , lifedur= 0s and 0kb, spi= 0x0(0), conn\_id= 0, keysize= 0, flags= 0x2 \*CryptoEngine0: validate proposal request \*IPSEC(kei\_proxy): head = clientmap, map->ivrf = , kei->ivrf =  
\*IPSEC(validate\_transform\_proposal): transform proposal not supported for identity: {esp-aes esp-md5-hmac comp-lzs } \*ISAKMP (0:1): IPsec policy invalidated proposal \*ISAKMP (0:1): Checking IPsec proposal 4 \*ISAKMP: transform 1, ESP\_AES \*ISAKMP: attributes in transform: \*ISAKMP: authenticator is HMAC-SHA \*ISAKMP: encaps is 1 \*ISAKMP: key length is 128 \*ISAKMP: SA life type in seconds \*ISAKMP: SA life duration (VPI) of 0x0 0x20 0xC4 0x9B \*CryptoEngine0: validate proposal \*ISAKMP (0:1): atts are acceptable. \*ISAKMP (0:1): Checking IPsec proposal 4 \*ISAKMP (0:1): transform 1, IPPCP LZS \*ISAKMP: attributes in transform: \*ISAKMP: encaps is 1 \*ISAKMP: SA life type in seconds \*ISAKMP: SA life duration (VPI) of 0x0 0x20 0xC4 0x9B \*ISAKMP (0:1): atts are acceptable. \*IPSEC(validate\_proposal\_request): proposal part #1, (key eng. msg.) INBOUND local= 10.1.1.1, remote= 10.0.0.1, local\_proxy= 10.1.1.1/255.255.255.255/0/0 (type=1), remote\_proxy= 10.16.20.1/255.255.255.255/0/0 (type=1), protocol= ESP, transform= esp-aes esp-sha-hmac , lifedur= 0s and 0kb, spi= 0x0(0), conn\_id= 0, keysize= 128, flags= 0x2  
\*IPSEC(validate\_proposal\_request): proposal part #2, (key eng. msg.) INBOUND local= 10.1.1.1, remote= 10.0.0.1, local\_proxy= 10.1.1.1/255.255.255.255/0/0 (type=1), remote\_proxy= 10.16.20.1/255.255.255.255/0/0 (type=1), protocol= PCP, transform= comp-lzs , lifedur= 0s and 0kb, spi= 0x0(0), conn\_id= 0, keysize= 0, flags= 0x2 \*CryptoEngine0: validate proposal request \*IPSEC(kei\_proxy): head = clientmap, map->ivrf = , kei->ivrf =  
\*IPSEC(validate\_transform\_proposal): transform proposal not supported for identity: {esp-aes esp-sha-hmac comp-lzs } \*ISAKMP (0:1): IPsec policy invalidated proposal \*ISAKMP (0:1): Checking IPsec proposal 5 \*ISAKMP: transform 1, ESP\_AES \*ISAKMP: attributes in transform: \*ISAKMP: authenticator is HMAC-MD5 \*ISAKMP: encaps is 1 \*ISAKMP: key length is 256 \*ISAKMP: SA life type in seconds \*ISAKMP: SA life duration (VPI) of 0x0 0x20 0xC4 0x9B \*CryptoEngine0: validate proposal \*ISAKMP (0:1): atts are acceptable. \*IPSEC(validate\_proposal\_request): proposal part #1, (key eng. msg.) INBOUND local= 10.1.1.1, remote= 10.0.0.1, local\_proxy= 10.1.1.1/255.255.255.255/0/0 (type=1), remote\_proxy= 10.16.20.1/255.255.255.255/0/0 (type=1), protocol= ESP, transform= esp-aes 256 esp-md5-hmac , lifedur= 0s and 0kb, spi= 0x0(0), conn\_id= 0, keysize= 256, flags= 0x2 \*CryptoEngine0: validate proposal request \*IPSEC(kei\_proxy): head = clientmap, map->ivrf = , kei->ivrf = \*IPSEC(validate\_transform\_proposal): transform proposal not supported for identity: {esp-aes 256 esp-md5-hmac } \*ISAKMP (0:1): IPsec policy invalidated proposal \*ISAKMP (0:1): Checking IPsec proposal 6 \*ISAKMP: transform 1, ESP\_AES \*ISAKMP: attributes in transform: \*ISAKMP: authenticator is HMAC-SHA \*ISAKMP: encaps is 1 \*ISAKMP: key length is 256 \*ISAKMP: SA life type in seconds \*ISAKMP: SA life duration (VPI) of 0x0 0x20 0xC4 0x9B \*CryptoEngine0: validate proposal \*ISAKMP (0:1): atts are acceptable.  
\*IPSEC(validate\_proposal\_request): proposal part #1, (key eng. msg.) INBOUND local= 10.1.1.1, remote= 10.0.0.1, local\_proxy= 10.1.1.1/255.255.255.255/0/0 (type=1), remote\_proxy= 10.16.20.1/255.255.255.255/0/0 (type=1), protocol= ESP, transform= esp-aes 256 esp-sha-hmac , lifedur= 0s and 0kb, spi= 0x0(0), conn\_id= 0, keysize= 256, flags= 0x2 \*CryptoEngine0: validate proposal request \*IPSEC(kei\_proxy): head = clientmap, map->ivrf = , kei->ivrf =  
\*IPSEC(validate\_transform\_proposal): transform proposal not supported for identity: {esp-aes 256 esp-sha-hmac } \*ISAKMP (0:1): IPsec policy invalidated proposal \*ISAKMP (0:1): Checking IPsec proposal 7 \*ISAKMP: transform 1, ESP\_AES \*ISAKMP: attributes in transform: \*ISAKMP: authenticator is HMAC-MD5 \*ISAKMP: encaps is 1 \*ISAKMP: key length is 128 \*ISAKMP: SA life type in seconds \*ISAKMP: SA life duration (VPI) of 0x0 0x20 0xC4 0x9B \*CryptoEngine0: validate proposal \*ISAKMP (0:1): atts are acceptable. \*IPSEC(validate\_proposal\_request): proposal part

#1, (key eng. msg.) INBOUND local= 10.1.1.1, remote= 10.0.0.1, local\_proxy= 10.1.1.1/255.255.255.255/0/0 (type=1), remote\_proxy= 10.16.20.1/255.255.255.255/0/0 (type=1), protocol= ESP, transform= esp-aes esp-md5-hmac , lifedur= 0s and 0kb, spi= 0x0(0), conn\_id= 0, keysize= 128, flags= 0x2 \*CryptoEngine0: validate proposal request \*IPSEC(kei\_proxy): head = clientmap, map->ivrf = , kei->ivrf = \*IPSEC(validate\_transform\_proposal): transform proposal not supported for identity: {esp-aes esp-md5-hmac } \*ISAKMP (0:1): IPsec policy invalidated proposal \*ISAKMP (0:1): Checking IPsec proposal 8 \*ISAKMP: transform 1, ESP\_AES \*ISAKMP: attributes in transform: \*ISAKMP: authenticator is HMAC-SHA \*ISAKMP: encaps is 1 \*ISAKMP: key length is 128 \*ISAKMP: SA life type in seconds \*ISAKMP: SA life duration (VPI) of 0x0 0x20 0xC4 0x9B \*CryptoEngine0: validate proposal \*ISAKMP (0:1): atts are acceptable. \*IPSEC(validate\_proposal\_request): proposal part #1, (key eng. msg.) INBOUND local= 10.1.1.1, remote= 10.0.0.1, local\_proxy= 10.1.1.1/255.255.255.255/0/0 (type=1), remote\_proxy= 10.16.20.1/255.255.255.255/0/0 (type=1), protocol= ESP, transform= esp-aes esp-sha-hmac , lifedur= 0s and 0kb, spi= 0x0(0), conn\_id= 0, keysize= 128, flags= 0x2 \*CryptoEngine0: validate proposal request \*IPSEC(kei\_proxy): head = clientmap, map->ivrf = , kei->ivrf = \*IPSEC(validate\_transform\_proposal): transform proposal not supported for identity: {esp-aes esp-sha-hmac } \*ISAKMP (0:1): IPsec policy invalidated proposal \*ISAKMP (0:1): Checking IPsec proposal 9 \*ISAKMP: transform 1, ESP\_3DES \*ISAKMP: attributes in transform: \*ISAKMP: authenticator is HMAC-MD5 \*ISAKMP: encaps is 1 \*ISAKMP: SA life type in seconds \*ISAKMP: SA life duration (VPI) of 0x0 0x20 0xC4 0x9B \*CryptoEngine0: validate proposal \*ISAKMP (0:1): atts are acceptable. \*ISAKMP (0:1): Checking IPsec proposal 9 \*ISAKMP (0:1): transform 1, IPPCP LZS \*ISAKMP: attributes in transform: \*ISAKMP: encaps is 1 \*ISAKMP: SA life type in seconds \*IPSEC(spi\_response): getting spi 3233689542 for SA from 10.1.1.1 to 10.0.0.1 for prot 3 \*ISAKMP: received ke message (2/1) \*CryptoEngine0: generate hmac context for conn id 1 \*CryptoEngine0: CRYPTO\_ISA\_IKE\_HMAC(hw)(ipsec) \*CryptoEngine0: CRYPTO\_ISA\_IKE\_ENCRYPT(hw)(ipsec) \*ISAKMP (0:1): sending packet to 10.0.0.1 my\_port 500 peer\_port 500 (R) QM\_IDLE \*ISAKMP (0:1): Node 2058744231, Input = IKE\_MSG\_FROM\_IPSEC, IKE\_SPI\_REPLY \*ISAKMP (0:1): Old State = IKE\_QM\_SPI\_STARVE New State = IKE\_QM\_R\_QM2 \*ISAKMP (0:1): received packet from 10.0.0.1 dport 500 sport 500 Global (R) QM\_IDLE \*CryptoEngine0: CRYPTO\_ISA\_IKE\_DECRYPT(hw)(ipsec) \*CryptoEngine0: generate hmac context for conn id 1 \*CryptoEngine0: CRYPTO\_ISA\_IKE\_HMAC(hw)(ipsec) \*CryptoEngine0: ipsec allocate flow \*CryptoEngine0: ipsec allocate flow \*CryptoEngine0: CRYPTO\_ISA\_IPSEC\_KEY\_CREATE(hw)(ipsec) \*CryptoEngine0: CRYPTO\_ISA\_IPSEC\_KEY\_CREATE(hw)(ipsec) \*ISAKMP: Locking peer struct 0x83166B20, IPSEC refcount 1 for for stuff\_ke !--- A matching IPsec policy has been negotiated and authenticated. !--- Next, the SA's are set up. \*ISAKMP (0:1): Creating IPsec SAs \* inbound SA from 10.0.0.1 to 10.1.1.1 (f/i) 0/ 0 (proxy 10.16.20.1 to 10.1.1.1) \* has spi 0xC0BE2FC6 and conn\_id 420 and flags 2 \* lifetime of 2147483 seconds \* has client flags 0x0 \* outbound SA from 10.1.1.1 to 10.0.0.1 (f/i) 0/ 0 (proxy 10.1.1.1 to 10.16.20.1 ) \*ISAKMP (0:1): received packet from 10.0.0.1 dport 500 sport 500 Global (R) QM\_IDLE \*ISAKMP: set new node 1101355775 to QM\_IDLE \*CryptoEngine0: CRYPTO\_ISA\_IKE\_DECRYPT(hw)(ipsec) \*CryptoEngine0: generate hmac context for conn id 1 \*CryptoEngine0: CRYPTO\_ISA\_IKE\_HMAC(hw)(ipsec) \*ISAKMP (0:1): processing HASH payload. message ID = 1101355775 \*ISAKMP (0:1): processing SA payload. message ID = 1101355775 \*ISAKMP (0:1): Checking IPsec proposal 1 \*ISAKMP: transform 1, ESP\_AES \*ISAKMP: attributes in transform: \*ISAKMP: authenticator is HMAC-MD5 \*ISAKMP: encaps is 1 \*ISAKMP: key length is 256 \*ISAKMP: SA life type in seconds \*ISAKMP: SA life duration (VPI) of 0x0 0x20 0xC4 0x9B \*CryptoEngine0: validate proposal \*ISAKMP (0:1): atts are acceptable. \*ISAKMP (0:1): Checking IPsec proposal 1 \*ISAKMP (0:1): transform 1, IPPCP LZS \*ISAKMP: attributes in transform: \*ISAKMP: encaps is 1 \*ISAKMP: SA life type in seconds \*ISAKMP: SA life duration (VPI) of 0x0 0x20 0xC4 0x9B \*ISAKMP (0:1): atts are acceptable. \*IPSEC(validate\_proposal\_request): proposal part #1, (key eng. msg.) INBOUND local= 10.1.1.1, remote= 10.0.0.1, local\_proxy= 172.18.124.0/255.255.255.0/0/0 (type=4), remote\_proxy= 10.16.20.1/255.255.255.255/0/0 (type=1), protocol= ESP, transform= esp-aes 256 esp-md5-hmac , lifedur= 0s and 0kb, spi= 0x0(0), conn\_id= 0, keysize= 256, flags= 0x2 \*IPSEC(validate\_proposal\_request): proposal part #2, (key eng. msg.) INBOUND local= 10.1.1.1, remote= 10.0.0.1, local\_proxy= 172.18.124.0/255.255.255.0/0/0 (type=4), remote\_proxy= 10.16.20.1/255.255.255.255/0/0 (type=1), protocol= PCP, transform= comp-lzs , lifedur= 0s and 0kb, spi= 0x0(0), conn\_id= 0, keysize= 0, flags= 0x2 \*CryptoEngine0: validate proposal request \*IPSEC(kei\_proxy): head = clientmap, map->ivrf = , kei->ivrf = \*IPSEC(kei\_proxy): head = clientmap, map->ivrf = , kei->ivrf = \*IPSEC(validate\_transform\_proposal): transform proposal not supported for identity: {esp-aes 256 esp-md5-hmac comp-lzs } \*ISAKMP (0:1): IPsec policy invalidated proposal \*ISAKMP (0:1): Checking IPsec proposal 2 \*ISAKMP: transform 1, ESP\_AES \*ISAKMP: attributes in transform: \*ISAKMP: authenticator is HMAC-SHA \*ISAKMP: encaps is 1 \*ISAKMP: key length is 256 \*ISAKMP: SA life type in seconds \*ISAKMP: SA life duration (VPI) of 0x0 0x20 0xC4 0x9B \*CryptoEngine0: validate proposal \*ISAKMP (0:1): atts are acceptable. \*ISAKMP (0:1): Checking IPsec proposal 2 \*ISAKMP (0:1): transform 1, IPPCP LZS \*ISAKMP: attributes in

transform: \*ISAKMP: encaps is 1 \*ISAKMP: SA life type in seconds \*ISAKMP: SA life duration (VPI) of 0x0 0x20 0xC4 0x9B \*ISAKMP (0:1): atts are acceptable. \*IPSEC(validate\_proposal\_request): proposal part #1, (key eng. msg.) INBOUND local= 10.1.1.1, remote= 10.0.0.1, local\_proxy= 172.18.124.0/255.255.255.0/0/0 (type=4), remote\_proxy= 10.16.20.1/255.255.255.255/0/0 (type=1), protocol= ESP, transform= esp-aes 256 esp-sha-hmac , lifedur= 0s and 0kb, spi= 0x0(0), conn\_id= 0, keysize= 256, flags= 0x2 \*IPSEC(validate\_proposal\_request): proposal part #2, (key eng. msg.) INBOUND local= 10.1.1.1, remote= 10.0.0.1, local\_proxy= 172.18.124.0/255.255.255.0/0/0 (type=4), remote\_proxy= 10.16.20.1/255.255.255.255/0/0 (type=1), protocol= PCP, transform= comp-lzs , lifedur= 0s and 0kb, spi= 0x0(0), conn\_id= 0, keysize= 0, flags= 0x2 \*CryptoEngine0: validate proposal request \*IPSEC(kei\_proxy): head = clientmap, map->ivrf = , kei->ivrf = \*IPSEC(kei\_proxy): head = clientmap, map->ivrf = , kei->ivrf = \*IPSEC(validate\_transform\_proposal): transform proposal not supported for identity: {esp-aes 256 esp-sha-hmac comp-lzs } \*ISAKMP (0:1): IPsec policy invalidated proposal \*ISAKMP (0:1): Checking IPsec proposal 3 \*ISAKMP: transform 1, ESP\_AES \*ISAKMP: attributes in transform: \*ISAKMP: authenticator is HMAC-MD5 \*ISAKMP: encaps is 1 \*ISAKMP: key length is 128 \*ISAKMP: SA life type in seconds \*ISAKMP: SA life duration (VPI) of 0x0 0x20 0xC4 0x9B \*CryptoEngine0: validate proposal \*ISAKMP (0:1): atts are acceptable. \*ISAKMP (0:1): Checking IPsec proposal 3 \*ISAKMP (0:1): transform 1, IPPCP LZS \*ISAKMP: attributes in transform: \*ISAKMP: encaps is 1 \*ISAKMP: SA life type in seconds \*ISAKMP: SA life duration (VPI) of 0x0 0x20 0xC4 0x9B \*ISAKMP (0:1): atts are acceptable. \*IPSEC(validate\_proposal\_request): proposal part #1, (key eng. msg.) INBOUND local= 10.1.1.1, remote= 10.0.0.1, local\_proxy= 172.18.124.0/255.255.255.0/0/0 (type=4), remote\_proxy= 10.16.20.1/255.255.255.255/0/0 (type=1), protocol= ESP, transform= esp-aes esp-md5-hmac , lifedur= 0s and 0kb, spi= 0x0(0), conn\_id= 0, keysize=128, flags= 0x2 \*IPSEC(validate\_proposal\_request): proposal part #2, (key eng. msg.) INBOUND local= 10.1.1.1, remote= 10.0.0.1, local\_proxy= 172.18.124.0/255.255.255.0/0/0 (type=4), remote\_proxy= 10.16.20.1/255.255.255.255/0/0 (type=1), protocol= PCP, transform= comp-lzs , lifedur= 0s and 0kb, spi= 0x0(0), conn\_id= 0, keysize= 0, flags= 0x2 \*CryptoEngine0: validate proposal request \*IPSEC(kei\_proxy): head = clientmap, map->ivrf = , kei->ivrf = \*IPSEC(kei\_proxy): head = clientmap, map->ivrf = , kei->ivrf = \*IPSEC(validate\_transform\_proposal): transform proposal not supported for identity: {esp-aes esp-md5-hmac comp-lzs } \*ISAKMP (0:1): IPsec policy invalidated proposal \*ISAKMP (0:1): Checking IPsec proposal 4 \*ISAKMP: transform 1, ESP\_AES \*ISAKMP: attributes in transform: \*ISAKMP: authenticator is HMAC-SHA \*ISAKMP: encaps is 1 \*ISAKMP: key length is 128 \*ISAKMP: SA life type in seconds \*ISAKMP: SA life duration (VPI) of 0x0 0x20 0xC4 0x9B \*CryptoEngine0: validate proposal \*ISAKMP (0:1): atts are acceptable. \*ISAKMP (0:1): Checking IPsec proposal 4 \*ISAKMP (0:1): transform 1, IPPCP LZS \*ISAKMP: attributes in transform: \*ISAKMP: encaps is 1 \*ISAKMP: SA life type in seconds \*ISAKMP: SA life duration (VPI) of 0x0 0x20 0xC4 0x9B \*ISAKMP (0:1): atts are acceptable. \*IPSEC(validate\_proposal\_request): proposal part #1, (key eng. msg.) INBOUND local= 10.1.1.1, remote= 10.0.0.1, local\_proxy= 172.18.124.0/255.255.255.0/0/0 (type=4), remote\_proxy= 10.16.20.1/255.255.255.255/0/0 (type=1), protocol= ESP, transform= esp-aes esp-sha-hmac , lifedur= 0s and 0kb, spi= 0x0(0), conn\_id= 0, keysize= 128, flags= 0x2 \*IPSEC(validate\_proposal\_request): proposal part #2, (key eng. msg.) INBOUND local= 10.1.1.1, remote= 10.0.0.1, local\_proxy= 172.18.124.0/255.255.255.0/0/0 (type=4), remote\_proxy= 10.16.20.1/255.255.255.255/0/0 (type=1), protocol= PCP, transform= comp-lzs , lifedur= 0s and 0kb, spi= 0x0(0), conn\_id= 0, keysize= 0, flags= 0x2 \*CryptoEngine0: validate proposal request \*IPSEC(kei\_proxy): head = clientmap, map->ivrf = , kei->ivrf = \*IPSEC(kei\_proxy): head = clientmap, map->ivrf = , kei->ivrf = \*IPSEC(validate\_transform\_proposal): transform proposal not supported for identity: {esp-aes esp-sha-hmac comp-lzs } \*ISAKMP (0:1): IPsec policy invalidated proposal \*ISAKMP (0:1): Checking IPsec proposal 5 \*ISAKMP: transform 1, ESP\_AES \*ISAKMP: attributes in transform: \*ISAKMP: authenticator is HMAC-MD5 \*ISAKMP: encaps is 1 \*ISAKMP: key length is 256 \*ISAKMP: SA life type in seconds \*ISAKMP: SA life duration (VPI) of 0x0 0x20 0xC4 0x9B \*CryptoEngine0: validate proposal \*ISAKMP (0:1): atts are acceptable. \*IPSEC(validate\_proposal\_request): proposal part #1, (key eng. msg.) INBOUND local= 10.1.1.1, remote= 10.0.0.1, local\_proxy= 172.18.124.0/255.255.255.0/0/0 (type=4), remote\_proxy= 10.16.20.1/255.255.255.255/0/0 (type=1), protocol= ESP, transform= esp-aes 256 esp-md5-hmac , lifedur= 0s and 0kb, spi= 0x0(0), conn\_id= 0, keysize= 256, flags= 0x2 \*CryptoEngine0: validate proposal request \*IPSEC(kei\_proxy): head = clientmap, map->ivrf = , kei->ivrf = \*IPSEC(kei\_proxy): head = clientmap, map->ivrf = , kei->ivrf = \*IPSEC(validate\_transform\_proposal): transform proposal not supported for identity: {esp-aes 256 esp-md5-hmac } \*ISAKMP (0:1): IPsec policy invalidated proposal \*ISAKMP (0:1): Checking IPsec proposal 6 \*ISAKMP: transform 1, ESP\_AES \*ISAKMP: attributes in transform: \*ISAKMP: authenticator is HMAC-SHA \*ISAKMP: encaps is 1 \*ISAKMP: key length is 256 \*ISAKMP: SA life type in seconds \*ISAKMP: SA life duration (VPI) of 0x0 0x20 0xC4 0x9B \*CryptoEngine0: validate proposal \*ISAKMP (0:1): atts are acceptable. \*IPSEC(validate\_proposal\_request): proposal part #1, (key eng. msg.) INBOUND local= 10.1.1.1, remote= 10.0.0.1, local\_proxy=

```

172.18.124.0/255.255.255.0/0/0 (type=4), remote_proxy= 10.16.20.1/255.255.255.255/0/0 (type=1),
protocol= ESP, transform= esp-aes 256 esp-sha-hmac , lifedur= 0s and 0kb, spi= 0x0(0), conn_id=
0, keysize= 256, flags= 0x2 *CryptoEngine0: validate proposal request *IPSEC(kei_proxy): head =
clientmap, map->ivrf = , kei->ivrf = *IPSEC(kei_proxy): head = clientmap, map->ivrf = , kei-
>ivrf = *IPSEC(validate_transform_proposal): transform proposal not supported for identity:
{esp-aes 256 esp-sha-hmac } *ISAKMP (0:1): IPsec policy invalidated proposal *ISAKMP (0:1):
Checking IPsec proposal 7 *ISAKMP: transform 1, ESP_AES *ISAKMP: attributes in transform:
*ISAKMP: authenticator is HMAC-MD5 *ISAKMP: encaps is 1 *ISAKMP: key length is 128 *ISAKMP: SA
life type in seconds *ISAKMP: SA life duration (VPI) of 0x0 0x20 0xC4 0x9B *CryptoEngine0:
validate proposal *ISAKMP (0:1): atts are acceptable. *IPSEC(validate_proposal_request):
proposal part #1, (key eng. msg.) INBOUND local= 10.1.1.1, remote= 10.0.0.1, local_proxy=
172.18.124.0/255.255.255.0/0/0 (type=4), remote_proxy= 10.16.20.1/255.255.255.255/0/0 (type=1),
protocol= ESP, transform= esp-aes esp-md5-hmac , lifedur= 0s and 0kb, spi= 0x0(0), conn_id= 0,
keysize= 128, flags= 0x2 *CryptoEngine0: validate proposal request *IPSEC(kei_proxy): head =
clientmap, map->ivrf = , kei->ivrf = *IPSEC(kei_proxy): head = clientmap, map->ivrf = , kei-
>ivrf = *IPSEC(validate_transform_proposal): transform proposal not supported for identity:
{esp-aes esp-md5-hmac } *ISAKMP (0:1): IPsec policy invalidated proposal *ISAKMP (0:1): Checking
IPsec proposal 8 *ISAKMP: transform 1, ESP_AES *ISAKMP: attributes in transform: *ISAKMP:
authenticator is HMAC-SHA *ISAKMP: encaps is 1 *ISAKMP: key length is 128 *ISAKMP: SA life type
in seconds *ISAKMP: SA life duration (VPI) of 0x0 0x20 0xC4 0x9B *CryptoEngine0: validate
proposal *ISAKMP (0:1): atts are acceptable. *IPSEC(spi_response): getting spi 3438126624 for SA
from 10.1.1.1 to 10.0.0.1 for prot 3 *ISAKMP: received ke message (2/1) *CryptoEngine0: generate
hmac context for conn id 1 *CryptoEngine0: CRYPTO_ISA_IKE_HMAC(hw)(ipsec) *CryptoEngine0:
CRYPTO_ISA_IKE_ENCRYPT(hw)(ipsec) *ISAKMP (0:1): sending packet to 10.0.0.1 my_port 500
peer_port 500 (R) QM_IDLE *ISAKMP (0:1): Node 1101355775, Input = IKE_MSG_FROM_IPSEC,
IKE_SPI_REPLY *ISAKMP (0:1): Old State = IKE_QM_SPI_STARVE New State = IKE_QM_R_QM2 *ISAKMP
(0:1): received packet from 10.0.0.1 dport 500 sport 500 Global (R) QM_IDLE *CryptoEngine0:
CRYPTO_ISA_IKE_DECRYPT(hw)(ipsec) *CryptoEngine0: generate hmac context for conn id 1
*CryptoEngine0: CRYPTO_ISA_IKE_HMAC(hw)(ipsec) *CryptoEngine0: ipsec allocate flow
*CryptoEngine0: ipsec allocate flow *CryptoEngine0: CRYPTO_ISA_IPSEC_KEY_CREATE(hw)(ipsec)
*CryptoEngine0: CRYPTO_ISA_IPSEC_KEY_CREATE(hw)(ipsec) *ISAKMP: Locking peer struct 0x83166B20,
IPSEC refcount 2 for for stuff_ke *ISAKMP (0:1): Creating IPsec SAs * inbound SA from 10.0.0.1
to 10.1.1.1 (f/i) 0/ 0 (proxy 10.16.20.1 to 172.18.124.0) * has spi 0xCCEDA620 and conn_id 422
and flags 2 * lifetime of 2147483 seconds * has client flags 0x0 * outbound SA from 10.1.1.1 to
10.0.0.1 (f/i) 0/ 0 (proxy 172.18.124.0 to 10.16.20.1 )

```

## [Logs de client](#)

Lancez le LogViewer sur le client vpn afin de visualiser les logs. Assurez-vous que le filtre est placé à la haute pour toutes les classes configurées. C'est un log témoin sorti :

```

1      16:52:27.031 06/18/03 Sev=Info/6      DIALER/0x63300002
Initiating connection.

2      16:52:27.041 06/18/03 Sev=Info/4      CM/0x63100002
Begin connection process

3      16:52:27.051 06/18/03 Sev=Info/4      CM/0x63100004
Establish secure connection using Ethernet

4      16:52:27.051 06/18/03 Sev=Info/4      CM/0x63100024
Attempt connection with server "10.1.1.1"

5      16:52:27.101 06/18/03 Sev=Info/6      IKE/0x6300003B
Attempting to establish a connection with 10.1.1.1.

6      16:52:27.481 06/18/03 Sev=Info/4      IKE/0x63000013
SENDING >>> ISAKMP OAK AG (SA, KE, NON, ID, VID, VID, VID, VID, VID)
to 10.1.1.1

7      16:52:27.612 06/18/03 Sev=Info/4      IPSEC/0x63700014
Deleted all keys

```



8 16:52:27.722 06/18/03 Sev=Info/5 IKE/0x6300002F  
Received ISAKMP packet: peer = 10.1.1.1

9 16:52:27.722 06/18/03 Sev=Info/4 IKE/0x63000014  
RECEIVING <<< ISAKMP OAK AG (SA, VID, VID, VID, VID, VID, KE, ID, NON, HASH, NAT-D, NAT-D)  
from 10.1.1.1

10 16:52:27.722 06/18/03 Sev=Info/5 IKE/0x63000059  
Vendor ID payload = 12F5F28C457168A9702D9FE274CC0100

11 16:52:27.722 06/18/03 Sev=Info/5 IKE/0x63000001  
Peer is a Cisco-Unity compliant peer

12 16:52:27.722 06/18/03 Sev=Info/5 IKE/0x63000059  
Vendor ID payload = AFCAD71368A1F1C96B8696FC77570100

13 16:52:27.722 06/18/03 Sev=Info/5 IKE/0x63000001  
Peer supports DPD

14 16:52:27.722 06/18/03 Sev=Info/5 IKE/0x63000059  
Vendor ID payload = 4F6CF9393C7749D894C6C92D2131AE04

15 16:52:27.722 06/18/03 Sev=Info/5 IKE/0x63000059  
Vendor ID payload = 09002689DFD6B712

16 16:52:27.722 06/18/03 Sev=Info/5 IKE/0x63000001  
Peer supports XAUTH

17 16:52:27.722 06/18/03 Sev=Info/5 IKE/0x63000059  
Vendor ID payload = 90CB80913EBB696E086381B5EC427B1F

18 16:52:27.722 06/18/03 Sev=Info/5 IKE/0x63000001  
Peer supports NAT-T

19 16:52:27.782 06/18/03 Sev=Info/4 IKE/0x63000013  
SENDING >>> ISAKMP OAK AG \*(HASH, NOTIFY:STATUS\_INITIAL\_CONTACT, NAT-D, NAT-D)  
to 10.1.1.1

20 16:52:27.822 06/18/03 Sev=Info/5 IKE/0x6300002F  
Received ISAKMP packet: peer = 10.1.1.1

21 16:52:27.822 06/18/03 Sev=Info/4 IKE/0x63000014  
RECEIVING <<< ISAKMP OAK INFO \*(HASH, NOTIFY:STATUS\_RESP\_LIFETIME)  
from 10.1.1.1

22 16:52:27.822 06/18/03 Sev=Info/5 IKE/0x63000044  
RESPONDER-LIFETIME notify has value of 86400 seconds

23 16:52:27.822 06/18/03 Sev=Info/5 IKE/0x63000046  
This SA has already been alive for 0 seconds, setting expiry to 86400 seconds from now

24 16:52:27.842 06/18/03 Sev=Info/5 IKE/0x6300002F  
Received ISAKMP packet: peer = 10.1.1.1

25 16:52:27.842 06/18/03 Sev=Info/4 IKE/0x63000014  
RECEIVING <<< ISAKMP OAK TRANS \*(HASH, ATTR) from 10.1.1.1

26 16:52:27.842 06/18/03 Sev=Info/4 CM/0x63100015  
Launch xAuth application

27 16:52:32.449 06/18/03 Sev=Info/5 IKE/0x6300002F  
Received ISAKMP packet: peer = 10.1.1.1

28 16:52:32.449 06/18/03 Sev=Info/4 IKE/0x63000014

RECEIVING <<< ISAKMP OAK TRANS \*(Retransmission) from 10.1.1.1

29 16:52:32.809 06/18/03 Sev=Info/4 CM/0x63100017  
xAuth application returned

30 16:52:32.809 06/18/03 Sev=Info/4 IKE/0x63000013  
SENDING >>> ISAKMP OAK TRANS \*(HASH, ATTR) to 10.1.1.1

31 16:52:37.626 06/18/03 Sev=Info/5 IKE/0x6300002F  
Received ISAKMP packet: peer = 10.1.1.1

32 16:52:37.636 06/18/03 Sev=Info/4 IKE/0x63000014  
RECEIVING <<< ISAKMP OAK TRANS \*(HASH, ATTR) from 10.1.1.1

33 16:52:37.636 06/18/03 Sev=Info/5 IKE/0x63000071  
Automatic NAT Detection Status:  
Remote end is NOT behind a NAT device  
This end is NOT behind a NAT device

34 16:52:37.636 06/18/03 Sev=Info/4 CM/0x6310000E  
Established Phase 1 SA. 1 Phase 1 SA in the system

35 16:52:37.656 06/18/03 Sev=Info/4 IKE/0x63000013  
SENDING >>> ISAKMP OAK TRANS \*(HASH, ATTR) to 10.1.1.1

36 16:52:37.987 06/18/03 Sev=Info/5 IKE/0x6300005D  
Client sending a firewall request to concentrator

37 16:52:37.987 06/18/03 Sev=Info/5 IKE/0x6300005C  
Firewall Policy: Product=Cisco Integrated Client, Capability=  
(Centralized Protection Policy).

38 16:52:38.007 06/18/03 Sev=Info/4 IKE/0x63000013  
SENDING >>> ISAKMP OAK TRANS \*(HASH, ATTR) to 10.1.1.1

39 16:52:38.087 06/18/03 Sev=Info/5 IKE/0x6300002F  
Received ISAKMP packet: peer = 10.1.1.1

40 16:52:38.087 06/18/03 Sev=Info/4 IKE/0x63000014  
RECEIVING <<< ISAKMP OAK TRANS \*(HASH, ATTR) from 10.1.1.1

41 16:52:38.097 06/18/03 Sev=Info/5 IKE/0x63000010  
MODE\_CFG\_REPLY: Attribute = INTERNAL\_IPV4\_ADDRESS: , value = 10.16.20.1

42 16:52:38.097 06/18/03 Sev=Info/5 IKE/0x63000010  
MODE\_CFG\_REPLY: Attribute = INTERNAL\_IPV4\_DNS(1): , value = 10.1.1.10

43 16:52:38.097 06/18/03 Sev=Info/5 IKE/0x63000010  
MODE\_CFG\_REPLY: Attribute = INTERNAL\_IPV4\_NBNS(1) (a.k.a. WINS) : , value = 10.1.1.20

44 16:52:38.097 06/18/03 Sev=Info/5 IKE/0xA3000017  
MODE\_CFG\_REPLY: The received (INTERNAL\_ADDRESS\_EXPIRY) attribute and value (86388)  
is not supported

45 16:52:38.097 06/18/03 Sev=Info/5 IKE/0x6300000E  
MODE\_CFG\_REPLY: Attribute = APPLICATION\_VERSION, value = Cisco Internetwork  
Operating System Software IOS (tm) C2600 Software (C2600-IK9S-M), Version 12.2(15)T2,  
RELEASE SOFTWARE (fc2)  
TAC Support: <http://www.cisco.com/tac>  
Copyright (c) 1986-2003 by cisco Systems, Inc.  
Compiled Thu 01-May-03 10:39 by nmasa

46 16:52:38.097 06/18/03 Sev=Info/5 IKE/0x6300000E  
MODE\_CFG\_REPLY: Attribute = MODECFG\_UNITY\_DEFDOMAIN: , value = cisco.com

47 16:52:38.097 06/18/03 Sev=Info/5 IKE/0x6300000D  
MODE\_CFG\_REPLY: Attribute = MODECFG\_UNITY\_SPLIT\_INCLUDE (# of split\_nets),  
value = 0x00000001

48 16:52:38.097 06/18/03 Sev=Info/5 IKE/0x6300000F  
SPLIT\_NET #1  
subnet = 172.18.124.0  
mask = 255.255.255.0  
protocol = 0  
src port = 0  
dest port=0

49 16:52:38.097 06/18/03 Sev=Info/4 CM/0x63100019  
Mode Config data received

50 16:52:38.347 06/18/03 Sev=Info/5 IKE/0x63000055  
Received a key request from Driver for IP address 10.1.1.1,  
GW IP = 10.1.1.1

51 16:52:38.347 06/18/03 Sev=Info/4 IKE/0x63000013  
SENDING >>> ISAKMP OAK QM \*(HASH, SA, NON, ID, ID) to 10.1.1.1

52 16:52:38.728 06/18/03 Sev=Info/5 IKE/0x6300002F  
Received ISAKMP packet: peer = 10.1.1.1

53 16:52:38.728 06/18/03 Sev=Info/4 IKE/0x63000014  
RECEIVING <<< ISAKMP OAK QM \*(HASH, SA, NON, ID, ID, NOTIFY:STATUS\_RESP\_LIFETIME)  
from 10.1.1.1

54 16:52:38.738 06/18/03 Sev=Info/5 IKE/0x63000044  
RESPONDER-LIFETIME notify has value of 3600 seconds

55 16:52:38.738 06/18/03 Sev=Info/5 IKE/0x63000045  
RESPONDER-LIFETIME notify has value of 4608000 kb

56 16:52:38.738 06/18/03 Sev=Info/4 IKE/0x63000013  
SENDING >>> ISAKMP OAK QM \*(HASH) to 10.1.1.1

57 16:52:38.738 06/18/03 Sev=Info/5 IKE/0x63000058  
Loading IPsec SA (Message ID = 0x7AB5F1A7 OUTBOUND SPI = 0xC0BE2FC6  
INBOUND SPI = 0x56FFC535)

58 16:52:38.788 06/18/03 Sev=Info/5 IKE/0x63000025  
Loaded OUTBOUND ESP SPI: 0xC0BE2FC6

59 16:52:38.798 06/18/03 Sev=Info/5 IKE/0x63000026  
Loaded INBOUND ESP SPI: 0x56FFC535

60 16:52:38.798 06/18/03 Sev=Info/4 CM/0x6310001A  
One secure connection established

61 16:52:38.828 06/18/03 Sev=Info/6 DIALER/0x63300003  
Connection established.

62 16:52:38.868 06/18/03 Sev=Info/6 CVPND/0x63400011  
Found matching adapter

63 16:52:38.968 06/18/03 Sev=Info/6 CVPND/0x63400011  
Found matching adapter

64 16:52:39.819 06/18/03 Sev=Info/4 CM/0x63100037  
Address watch added for 10.0.0.1. Current address(es): 10.0.0.1.

65 16:52:40.280 06/18/03 Sev=Info/4 IPSEC/0x63700014  
Deleted all keys

66 16:52:40.280 06/18/03 Sev=Info/4 IPSEC/0x63700010  
Created a new key structure

67 16:52:40.290 06/18/03 Sev=Info/4 IPSEC/0x6370000F  
Added key with SPI=0xc62fbec0 into key list

68 16:52:40.290 06/18/03 Sev=Info/4 IPSEC/0x63700010  
Created a new key structure

69 16:52:40.290 06/18/03 Sev=Info/4 IPSEC/0x6370000F  
Added key with SPI=0x35c5ff56 into key list

70 16:52:41.562 06/18/03 Sev=Info/6 DIALER/0x63300008  
MAPI32 Information - Outlook not default mail client

71 16:52:54.230 06/18/03 Sev=Info/5 IKE/0x63000055  
Received a key request from Driver for IP address 1.1.1.2, GW IP = 10.1.1.1

72 16:52:54.250 06/18/03 Sev=Info/4 IKE/0x63000013  
SENDING >>> ISAKMP OAK QM \*(HASH, SA, NON, ID, ID) to 10.1.1.1

73 16:52:54.731 06/18/03 Sev=Info/5 IKE/0x6300002F  
Received ISAKMP packet: peer = 10.1.1.1

74 16:52:54.731 06/18/03 Sev=Info/4 IKE/0x63000014  
RECEIVING <<< ISAKMP OAK QM \*(HASH, SA, NON, ID, ID, NOTIFY:STATUS\_RESP\_LIFETIME)  
from 10.1.1.1

75 16:52:54.741 06/18/03 Sev=Info/5 IKE/0x63000044  
RESPONDER-LIFETIME notify has value of 3600 seconds

76 16:52:54.741 06/18/03 Sev=Info/5 IKE/0x63000045  
RESPONDER-LIFETIME notify has value of 4608000 kb

77 16:52:54.741 06/18/03 Sev=Info/4 IKE/0x63000013  
SENDING >>> ISAKMP OAK QM \*(HASH) to 10.1.1.1

78 16:52:54.741 06/18/03 Sev=Info/5 IKE/0x63000058  
Loading IPsec SA (Message ID = 0x41A55AFF OUTBOUND SPI = 0xCCEDA620  
INBOUND SPI = 0x0C5B3DB2)

79 16:52:54.771 06/18/03 Sev=Info/5 IKE/0x63000025  
Loaded OUTBOUND ESP SPI: 0xCCEDA620

80 16:52:54.781 06/18/03 Sev=Info/5 IKE/0x63000026  
Loaded INBOUND ESP SPI: 0x0C5B3DB2

81 16:52:54.781 06/18/03 Sev=Info/4 CM/0x63100021  
Additional Phase 2 SA established.

82 16:52:55.472 06/18/03 Sev=Info/4 IPSEC/0x63700010  
Created a new key structure

83 16:52:55.472 06/18/03 Sev=Info/4 IPSEC/0x6370000F  
Added key with SPI=0x20a6edcc into key list

84 16:52:55.472 06/18/03 Sev=Info/4 IPSEC/0x63700010  
Created a new key structure

85 16:52:55.472 06/18/03 Sev=Info/4 IPSEC/0x6370000F  
Added key with SPI=0xb23d5b0c into key list

86 16:52:55.472 06/18/03 Sev=Info/4 IPSEC/0x63700019  
Activate outbound key with SPI=0x20a6edcc for inbound key with SPI=0xb23d5b0c

## [Informations connexes](#)

- [Page d'assistance technologique sur RADIUS](#)
- [Page de support de la négociation IPSec/des protocoles IKE](#)
- [Cisco VPN Client Support Page](#)
- [Request For Comments \(RFC\)](#)
- [Support et documentation techniques - Cisco Systems](#)