

Comment sélectionner la liste en fonction d'AAA sur le nom de domaine dans la passerelle intelligente de services (ISG)

Contenu

[Introduction](#)

[Conditions préalables](#)

[Conditions requises](#)

[Composants utilisés](#)

[Configurez](#)

[Diagramme du réseau](#)

[Configurations](#)

[Vérifiez](#)

[Dépannez](#)

[Exemple de sortie de débogage](#)

Introduction

Ce document fournit une manière de sélectionner un groupe d'Authentification, autorisation et comptabilité (AAA) et tous caractéristique reliés à lui (source-ip, serveur de rayon etc...) simplement en faisant une sélection sur le domaine récupéré de l'abonné entrant de Protocole point à point (PPP).

Conditions préalables

Conditions requises

Cisco vous recommande de prendre connaissance des rubriques suivantes :

- Réseaux commutés de connexion privée virtuelle (VPDNs)
- Service intelligent Gateway(ISG)

Conseil : : : Référez-vous au [guide de configuration de passerelle intelligent de services](#) afin de gagner la connaissance de l'ISG.

Conseil : Référez-vous au [guide de configuration VPDN](#) afin de gagner la connaissance de la fonctionnalité de base VPDN.

[Composants utilisés](#)

Les informations contenues dans ce document sont basées sur les versions de matériel et de logiciel suivantes :

- ASR1K exécutant la release 03.17.01.S IOS-XE.
- serveur de Libre-rayon.

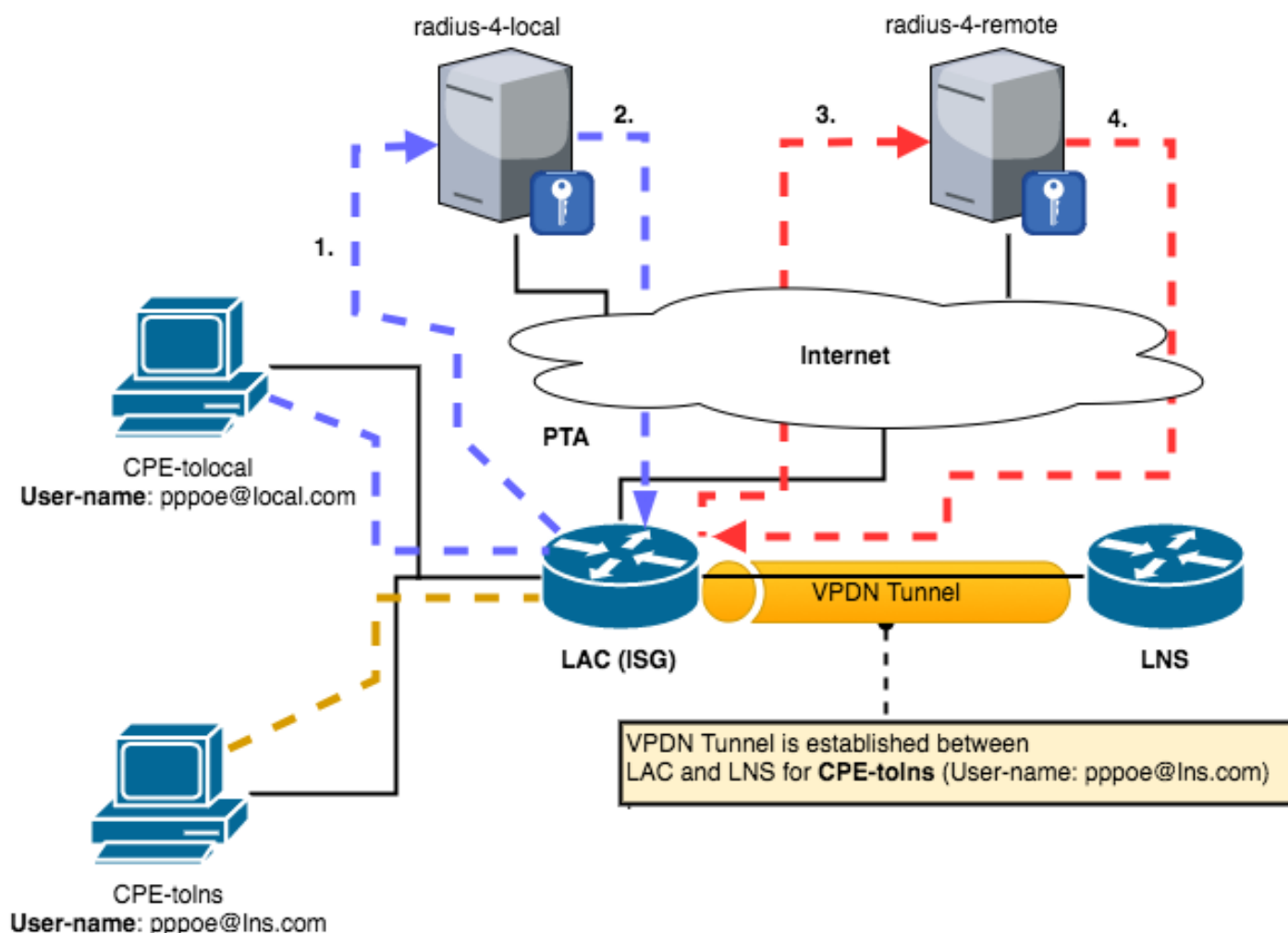
Les informations contenues dans ce document ont été créées à partir des périphériques d'un environnement de laboratoire spécifique. Tous les périphériques utilisés dans ce document ont démarré avec une configuration effacée (par défaut). Si votre réseau est opérationnel, assurez-vous que vous comprenez l'effet potentiel de toute commande.

Configurez

Utilisez les informations qui sont décrites dans cette section afin de configurer les caractéristiques qui sont décrites dans ce document.

Remarque: C'est seulement valide pour des abonnés de PPP.

Diagramme du réseau



Configurations

Remarque: Cette installation simule deux clients du PPPoE (PPP au-dessus des Ethernets) en créant deux sous-interfaces avec la balise différente dot1q sur le routeur des

matériels de site du client (CPE) et crée deux interfaces de numérotation avec le nom d'utilisateur différent de PPP. Ainsi des clients différents de cette manière deux dans la topologie pourraient être simulés.

C'est la configuration qui est utilisée sur le routeur CPE.

```
interface Ethernet0/1.101
  description ppp using isg
  encapsulation dot1Q 101
  pppoe enable group global
  pppoe-client dial-pool-number 2
!
interface Ethernet0/1.102
  description ppp using isg
  encapsulation dot1Q 102
  pppoe enable
  pppoe-client dial-pool-number 3
!
!--- Following dialer will be used for first CPE with user name pppoe@local.com.
! interface Dialer2
  ip address negotiated
  encapsulation ppp
  shutdown
  dialer pool 2
  ppp pap sent-username pppoe@local.com password 0 cisco ! !--- Following dialer will be used for
second CPE with user name pppoe@lns.com.
! interface Dialer3
  ip address negotiated
  encapsulation ppp
  shutdown
  dialer pool 3
  ppp pap sent-username pppoe@lns.com password 0 cisco
```

C'est la configuration qui est utilisée sur le périphérique du LAC (ISG).

```
!
hostname lac
!
aaa new-model
!
!
aaa group server radius AAA-4-LOCAL      ! => Group that will treat the user with domain local.com
  server name RAD-4-LOCAL
  ip radius source-interface Ethernet0/0
!
aaa group server radius AAA-4-FORWARD   ! => Group that will treat the user with domain lns.com
  server name RAD-4-FORWARD
  ip radius source-interface Loopback1
!
aaa authentication login default local
aaa authentication ppp default group radius
aaa authentication ppp AAA-4-LOCAL group AAA-4-LOCAL      ! => List will call the right group
aaa authentication ppp AAA-4-FORWARD group AAA-4-FORWARD ! => List will call the right group
aaa authorization exec default local
aaa authorization network default group radius
!
aaa session-id common
!
vpdn enable
!
```

```

class-map type control match-all PPP-4-FORWARD  !=> class to match the domain to forward to lns
  match unauthenticated-domain lns.com
  match protocol ppp
!
class-map type control match-all PPP-4-LOCAL    !=> class to match the domain for local
termination
  match unauthenticated-domain local.com
  match protocol ppp
!
class-map type control match-all PPP           !=> class to match ppp packets.
  match protocol ppp
!
policy-map type control PPPOE                  !=> All pppoe will first hit this control
policy
  class type control PPP event session-start
    11 collect identifier unauthenticated-domain
    12 service-policy type control DOMAIN      !=> Now we forward to another policy that will
make the selection
  !
  !
policy-map type control DOMAIN
  class type control PPP-4-LOCAL event session-start  !=> If domain is local.com we use this
    20 authenticate aaa list AAA-4-LOCAL
  !
  class type control PPP-4-FORWARD event session-start !=> If domain is lns.com we use this
    20 authenticate aaa list AAA-4-FORWARD
  !
  !
bba-group pppoe ppp-isg
  virtual-template 2
!
!
!
interface Loopback0
  ip address 172.19.1.2 255.255.255.255
!
interface Loopback1
  ip address 172.17.21.6 255.255.255.255          !=> radius request for domain lns.com use this
!
interface Ethernet0/0
  ip address 172.16.21.6 255.255.255.252        !=> radius request for domain local.com use
this
!
interface Ethernet0/1
  no ip address
!
interface Ethernet0/1.101
  encapsulation dot1Q 101
  pppoe enable group ppp-isg
!
interface Ethernet0/1.102
  encapsulation dot1Q 102
  pppoe enable group ppp-isg
!
interface Virtual-Template2
  ip unnumbered Loopback0
  ppp authentication pap
  service-policy type control PPPOE
!
radius server RAD-4-LOCAL
  address ipv4 172.16.21.5 auth-port 32645 acct-port 32646
  key cisco
!

```

```
radius server RAD-4-FORWARD
  address ipv4 172.16.21.5 auth-port 11645 acct-port 11646
  key cisco
!
```

C'est la configuration qui est utilisée sur le périphérique LNS.

```
!
hostname lac
!
aaa new-model
!
!
aaa group server radius AAA-4-LOCAL      !=> Group that will treat the user with domain local.com
  server name RAD-4-LOCAL
  ip radius source-interface Ethernet0/0
!
aaa group server radius AAA-4-FORWARD   !=> Group that will treat the user with domain lns.com
  server name RAD-4-FORWARD
  ip radius source-interface Loopback1
!
aaa authentication login default local
aaa authentication ppp default group radius
aaa authentication ppp AAA-4-LOCAL group AAA-4-LOCAL      !=> List will call the right group
aaa authentication ppp AAA-4-FORWARD group AAA-4-FORWARD !=> List will call the right group
aaa authorization exec default local
aaa authorization network default group radius
!
aaa session-id common
!
vpdn enable
!
class-map type control match-all PPP-4-FORWARD !=> class to match the domain to forward to lns
  match unauthenticated-domain lns.com
  match protocol ppp
!
class-map type control match-all PPP-4-LOCAL   !=> class to match the domain for local
termination
  match unauthenticated-domain local.com
  match protocol ppp
!
class-map type control match-all PPP          !=> class to match ppp packets.
  match protocol ppp
!
policy-map type control PPPOE                 !=> All pppoe will first hit this control
policy
  class type control PPP event session-start
    11 collect identifier unauthenticated-domain
    12 service-policy type control DOMAIN      !=> Now we forward to another policy that will
make the selection
  !
  !
policy-map type control DOMAIN
  class type control PPP-4-LOCAL event session-start !=> If domain is local.com we use this
    20 authenticate aaa list AAA-4-LOCAL
  !
  class type control PPP-4-FORWARD event session-start !=> If domain is lns.com we use this
    20 authenticate aaa list AAA-4-FORWARD
  !
  !
bba-group pppoe ppp-isg
  virtual-template 2
!
!
```

```

!
interface Loopback0
 ip address 172.19.1.2 255.255.255.255
!
interface Loopback1
 ip address 172.17.21.6 255.255.255.255      !=> radius request for domain lns.com use this
!
interface Ethernet0/0
 ip address 172.16.21.6 255.255.255.252      !=> radius request for domain local.com use
this
!
interface Ethernet0/1
 no ip address
!
interface Ethernet0/1.101
 encapsulation dot1Q 101
 pppoe enable group ppp-isg
!
interface Ethernet0/1.102
 encapsulation dot1Q 102
 pppoe enable group ppp-isg
!

interface Virtual-Template2
 ip unnumbered Loopback0
 ppp authentication pap
 service-policy type control PPPOE
!
radius server RAD-4-LOCAL
 address ipv4 172.16.21.5 auth-port 32645 acct-port 32646
 key cisco
!
radius server RAD-4-FORWARD
 address ipv4 172.16.21.5 auth-port 11645 acct-port 11646
 key cisco
!

```

Vérifiez

Cette section fournit les informations que vous pouvez employer afin de vérifier que votre configuration fonctionne correctement et une session de PPPoE est terminée sur le LAC et l'autre session est expédiée au LNS basé sur le nom de domaine.

```

!
hostname lac
!
aaa new-model
!
!
aaa group server radius AAA-4-LOCAL      !=> Group that will treat the user with domain local.com
 server name RAD-4-LOCAL
 ip radius source-interface Ethernet0/0
!
aaa group server radius AAA-4-FORWARD    !=> Group that will treat the user with domain lns.com
 server name RAD-4-FORWARD
 ip radius source-interface Loopback1
!
aaa authentication login default local
aaa authentication ppp default group radius
aaa authentication ppp AAA-4-LOCAL group AAA-4-LOCAL      !=> List will call the right group
aaa authentication ppp AAA-4-FORWARD group AAA-4-FORWARD  !=> List will call the right group
aaa authorization exec default local

```

```

aaa authorization network default group radius
!
aaa session-id common
!
vpdn enable
!
class-map type control match-all PPP-4-FORWARD ! => class to match the domain to forward to lns
  match unauthenticated-domain lns.com
  match protocol ppp
!
class-map type control match-all PPP-4-LOCAL ! => class to match the domain for local
termination
  match unauthenticated-domain local.com
  match protocol ppp
!
class-map type control match-all PPP ! => class to match ppp packets.
  match protocol ppp
!
policy-map type control PPPOE ! => All pppoe will first hit this control
policy
  class type control PPP event session-start
    11 collect identifier unauthenticated-domain
    12 service-policy type control DOMAIN ! => Now we forward to another policy that will
make the selection
  !
  !
policy-map type control DOMAIN
  class type control PPP-4-LOCAL event session-start ! => If domain is local.com we use this
    20 authenticate aaa list AAA-4-LOCAL
  !
  class type control PPP-4-FORWARD event session-start ! => If domain is lns.com we use this
    20 authenticate aaa list AAA-4-FORWARD
  !
  !
bba-group pppoe ppp-isg
  virtual-template 2
!
!
!
interface Loopback0
  ip address 172.19.1.2 255.255.255.255
!
interface Loopback1
  ip address 172.17.21.6 255.255.255.255 ! => radius request for domain lns.com use this
!
interface Ethernet0/0
  ip address 172.16.21.6 255.255.255.252 ! => radius request for domain local.com use
this
!
interface Ethernet0/1
  no ip address
!
interface Ethernet0/1.101
  encapsulation dot1Q 101
  pppoe enable group ppp-isg
!
interface Ethernet0/1.102
  encapsulation dot1Q 102
  pppoe enable group ppp-isg
!
interface Virtual-Template2
  ip unnumbered Loopback0
  ppp authentication pap

```

```

service-policy type control PPPOE
!
radius server RAD-4-LOCAL
address ipv4 172.16.21.5 auth-port 32645 acct-port 32646
key cisco
!
radius server RAD-4-FORWARD
address ipv4 172.16.21.5 auth-port 11645 acct-port 11646
key cisco
!

```

Cette présentation de commande que le tunnel VPDN est établi entre le LAC et le LNS pour l'abonné de **pppoe@lns.com**.

```
lac#sh vpdn tunnel
```

```
L2TP Tunnel Information Total tunnels 1 sessions 1
```

LocTunID	RemTunID	Remote Name	State	Remote Address	Sessn Count	L2TP VPDN	Class/Group
7085	24548	lns	est	172.19.1.1	1	VPDN	ip addr 17

```
lac#
```

Dépannez

Cette section fournit les informations que vous pouvez employer afin de dépanner votre configuration.

Remarque: Référez-vous [dépannage derrière l'ISG avec la surveillance de session et l'article conditionnel distribué de débogage](#) Cisco afin de dépanner la session ISG.

Exemple de sortie de débogage

Cette sortie de débogage reflète comment l'utilisateur local basé sur le nom de domaine local.com est authentifié et terminé sur le périphérique de LAC.

```

*Jan 17 14:36:24.339: SSS PM [uid:39][B4728100][AAA ID:50]: Authen status update; is now
"unauthen"
*Jan 17 14:36:24.339: SSS PM [uid:39][B4728100][AAA ID:50]: IDMGR: assert authen status
"unauthen"
*Jan 17 14:36:24.339: SSS PM [uid:39][B4728100][AAA ID:50]: IDMGR: send event Session Update
*Jan 17 14:36:24.339: SSS PM [uid:39][B4728100][AAA ID:50]: Username key not found in set domain
key API
*Jan 17 14:36:24.339: SSS PM [uid:39][B4728100][AAA ID:50]: Username key not found in set domain
key API
*Jan 17 14:36:24.339: SSS PM [uid:39][B4728100][AAA ID:50]: Updated NAS port for AAA ID 50
*Jan 17 14:36:24.339: SSS PM [uid:39][B4728100][AAA ID:50]: IDMGR: send event Session Update
*Jan 17 14:36:24.339: SSS PM [uid:39][B4728100][AAA ID:50]: Client block is NULL in get client
block with handle D8000027
*Jan 17 14:36:24.339: SSS PM [uid:39][B4728100][AAA ID:50]: Updated key list:
*Jan 17 14:36:24.339: SSS PM [uid:39][B4728100][AAA ID:50]: Input Interface =
"Ethernet0/1.101"
*Jan 17 14:36:24.339: SSS PM [uid:39][B4728100][AAA ID:50]: Access-Type = 3 (PPPoE)
*Jan 17 14:36:24.339: SSS PM [uid:39][B4728100][AAA ID:50]: Protocol-Type = 0 (PPP Access
Protocol)
*Jan 17 14:36:24.339: SSS PM [uid:39][B4728100][AAA ID:50]: Media-Type = 1 (Ethernet)
*Jan 17 14:36:24.339: SSS PM [uid:39][B4728100][AAA ID:50]: Authen-Status = 1
(Unauthenticated)
*Jan 17 14:36:24.339: SSS PM [uid:39][B4728100][AAA ID:50]: Nasport = PPPoEoVLAN: slot 0

```



```
adapter 0 port 1 sub-interface 101 IP 0.0.0.0 VPI 0 VCI 0 VLAN 101
*Jan 17 14:36:24.339: SSS PM [uid:39][B4728100][AAA ID:50]: Username key not found in set domain
key API
*Jan 17 14:36:24.339: SSS PM [uid:39][B4728100][AAA ID:50]: Username key not found in set domain
key API
*Jan 17 14:36:24.339: SSS PM [uid:39][B4728100][AAA ID:50]: Client block is NULL in get client
block with handle D8000027
*Jan 17 14:36:24.339: SSS PM [uid:39][B4728100][AAA ID:50]: Updated key list:
*Jan 17 14:36:24.339: SSS PM [uid:39][B4728100][AAA ID:50]:   Input Interface =
"Ethernet0/1.101"
*Jan 17 14:36:24.339: SSS PM [uid:39][B4728100][AAA ID:50]:   Access-Type = 3 (PPPoE)
*Jan 17 14:36:24.339: SSS PM [uid:39][B4728100][AAA ID:50]:   Protocol-Type = 0 (PPP Access
Protocol)
*Jan 17 14:36:24.339: SSS PM [uid:39][B4728100][AAA ID:50]:   Media-Type = 1 (Ethernet)
*Jan 17 14:36:24.339: SSS PM [uid:39][B4728100][AAA ID:50]:   Authen-Status = 1
(Unauthenticated)
*Jan 17 14:36:24.339: SSS PM [uid:39][B4728100][AAA ID:50]:   Nasport = PPPoEoVLAN: slot 0
adapter 0 port 1 sub-interface 101 IP 0.0.0.0 VPI 0 VCI 0 VLAN 101
*Jan 17 14:36:24.339: SSS PM [uid:39][B4728100][AAA ID:50]:   Session-Handle = 1358954575
(5100004F)
*Jan 17 14:36:24.339: SSS PM [uid:39][B4728100][AAA ID:50]: SM Policy invoke - Service Selection
Request
*Jan 17 14:36:24.339: SSS PM [uid:39][B4728100][AAA ID:50]: Access type PPPoE
*Jan 17 14:36:24.339: SSS PM [uid:39][B4728100][AAA ID:50]: Successfully added key
SUBTYPE_CONVERTED as FALSE
*Jan 17 14:36:24.339: SSS PM [uid:39][B4728100][AAA ID:50]: RULE: Looking for a rule for event
session-start
*Jan 17 14:36:24.339: SSS PM [uid:39][B4728100][AAA ID:50]: RULE:   Intf CloneSrc Vt2: service-
rule any: PPPOE
*Jan 17 14:36:24.339: SSS PM [uid:39][B4728100][AAA ID:50]: RULE:   Evaluate "PPPOE" for
session-start
*Jan 17 14:36:24.340: SSS PM [uid:39][B4728100][AAA ID:50]: RULE:   Match keys against "PPPOE":
*Jan 17 14:36:24.340: SSS PM [uid:39][B4728100][AAA ID:50]: RULE:   Input Interface =
"Ethernet0/1.101"
*Jan 17 14:36:24.340: SSS PM [uid:39][B4728100][AAA ID:50]: RULE:   Converted-Session = 0 (NO)
*Jan 17 14:36:24.340: SSS PM [uid:39][B4728100][AAA ID:50]: RULE:   Protocol-Type = 0 (PPP
Access Protocol)
*Jan 17 14:36:24.340: SSS PM [uid:39][B4728100][AAA ID:50]: RULE:   Media-Type = 1 (Ethernet)
*Jan 17 14:36:24.340: SSS PM [uid:39][B4728100][AAA ID:50]: RULE:   Authen-Status = 1
(Unauthenticated)
*Jan 17 14:36:24.340: SSS PM [uid:39][B4728100][AAA ID:50]: RULE:   Nasport = PPPoEoVLAN: slot
0 adapter 0 port 1 sub-interface 101 IP 0.0.0.0 VPI 0 VCI 0 VLAN 101
*Jan 17 14:36:24.340: SSS PM [uid:39][B4728100][AAA ID:50]: RULE:   Session-Handle =
1358954575 (5100004F)
*Jan 17 14:36:24.340: SSS PM [uid:39][B4728100][AAA ID:50]: CONTROL-CLASS-MAP: : [0] match-all
PPP
*Jan 17 14:36:24.340: SSS PM [uid:39][B4728100][AAA ID:50]: CONTROL-CLASS-MAP: : [0] match
identifier protocol ppp [TRUE]
*Jan 17 14:36:24.340: SSS PM [uid:39][B4728100][AAA ID:50]: CONTROL-CLASS-MAP: : [0] match-all
PPP
*Jan 17 14:36:24.340: SSS PM [uid:39][B4728100][AAA ID:50]: CONTROL-CLASS-MAP: : PPP [TRUE]
*Jan 17 14:36:24.340: SSS PM [uid:39][B4728100][AAA ID:50]: RULE:   Matched "PPPOE/PPP event
session-start"
*Jan 17 14:36:24.340: SSS PM [uid:39][B4728100][AAA ID:50]: RULE:   Matched "PPPOE/PPP event
session-start/11 collect identifier unauthenticated-domain "
*Jan 17 14:36:24.340: SSS PM [uid:39][B4728100][AAA ID:50]: RULE[0]: Start
*Jan 17 14:36:24.340: SSS PM [uid:39][B4728100][AAA ID:50]: RULE[0]: PPPOE/PPP event session-
start/11 collect identifier unauthenticated-domain
*Jan 17 14:36:24.340: SSS PM [uid:39][B4728100][AAA ID:50]: SIP [PPPoE] can provide more keys
*Jan 17 14:36:24.340: SSS PM [uid:39][B4728100][AAA ID:50]: RULE[0]: Need key Unauth-Domain
*Jan 17 14:36:24.340: SSS PM [uid:39][B4728100][AAA ID:50]: RULE[1]: Start
*Jan 17 14:36:24.340: SSS PM [uid:39][B4728100][AAA ID:50]: RULE[1]: PPPOE/PPP event session-
start/11 collect identifier unauthenticated-domain
*Jan 17 14:36:24.340: SSS PM [uid:39][B4728100][AAA ID:50]: Event <need keys>, State: initial-
```

req to need-init-keys

```
*Jan 17 14:36:24.340: SSS PM [uid:39][B4728100][AAA ID:50]: Policy reply - Need More Keys
*Jan 17 14:36:24.340: SSS PM [uid:39][B4728100][AAA ID:50]: IDMgr: Need: Unauth-Domain
*Jan 17 14:36:24.340: SSS PM [uid:39][B4728100][AAA ID:50]: Asking client for more keys
*Jan 17 14:36:24.340: SSS PM [uid:39][B4728100][AAA ID:50]: Policy reply - Need More Keys
*Jan 17 14:36:24.340: PPP: Alloc Context [B174CE60]
*Jan 17 14:36:24.340: ppp39 PPP: Phase is ESTABLISHING
*Jan 17 14:36:24.341: SSS PM: ANCP not enabled on 'Ethernet0/1.101' - not retrieving default
shaper value
*Jan 17 14:36:24.341: ppp39 PPP: Using vpn set call direction
*Jan 17 14:36:24.341: ppp39 PPP: Treating connection as a callin
*Jan 17 14:36:24.341: ppp39 PPP: Session handle[99000027] Session id[39]
*Jan 17 14:36:24.341: ppp39 LCP: Event[OPEN] State[Initial to Starting]
*Jan 17 14:36:24.341: ppp39 PPP LCP: Enter passive mode, state[Stopped]
*Jan 17 14:36:24.342: ppp39 LCP: I CONFREQ [Stopped] id 1 len 10
*Jan 17 14:36:24.342: ppp39 LCP: MagicNumber 0xBCD9A1B6 (0x0506BCD9A1B6)
*Jan 17 14:36:24.343: ppp39 LCP: O CONFREQ [Stopped] id 1 len 18
*Jan 17 14:36:24.343: ppp39 LCP: MRU 1492 (0x010405D4)
*Jan 17 14:36:24.343: ppp39 LCP: AuthProto PAP (0x0304C023)
*Jan 17 14:36:24.343: ppp39 LCP: MagicNumber 0x010DA1F7 (0x0506010DA1F7)
*Jan 17 14:36:24.343: ppp39 LCP: O CONFACK [Stopped] id 1 len 10
*Jan 17 14:36:24.343: ppp39 LCP: MagicNumber 0xBCD9A1B6 (0x0506BCD9A1B6)
*Jan 17 14:36:24.343: ppp39 LCP: Event[Receive ConfReq+] State[Stopped to ACKsent]
*Jan 17 14:36:24.343: ppp39 LCP: I CONFNAK [ACKsent] id 1 len 8
*Jan 17 14:36:24.343: ppp39 LCP: MRU 1500 (0x010405DC)
*Jan 17 14:36:24.343: ppp39 LCP: O CONFREQ [ACKsent] id 2 len 18
*Jan 17 14:36:24.343: ppp39 LCP: MRU 1500 (0x010405DC)
*Jan 17 14:36:24.343: ppp39 LCP: AuthProto PAP (0x0304C023)
*Jan 17 14:36:24.343: ppp39 LCP: MagicNumber 0x010DA1F7 (0x0506010DA1F7)
*Jan 17 14:36:24.343: ppp39 LCP: Event[Receive ConfNak/Rej] State[ACKsent to ACKsent]
*Jan 17 14:36:24.343: ppp39 LCP: I CONFACK [ACKsent] id 2 len 18
*Jan 17 14:36:24.343: ppp39 LCP: MRU 1500 (0x010405DC)
*Jan 17 14:36:24.343: ppp39 LCP: AuthProto PAP (0x0304C023)
*Jan 17 14:36:24.343: ppp39 LCP: MagicNumber 0x010DA1F7 (0x0506010DA1F7)
*Jan 17 14:36:24.343: ppp39 LCP: Event[Receive ConfAck] State[ACKsent to Open]
*Jan 17 14:36:24.366: ppp39 PPP: Queue PAP code[1] id[1]
*Jan 17 14:36:24.369: ppp39 PPP: Phase is AUTHENTICATING, by this end
*Jan 17 14:36:24.369: ppp39 PAP: Redirect packet to ppp39
*Jan 17 14:36:24.369: ppp39 PAP: I AUTH-REQ id 1 len 26 from "pppoe@local.com"
*Jan 17 14:36:24.370: ppp39 PAP: Authenticating peer pppoe@local.com
*Jan 17 14:36:24.370: ppp39 PPP: Phase is FORWARDING, Attempting Forward
*Jan 17 14:36:24.370: ppp39 LCP: State is Open
*Jan 17 14:36:24.370: SSS PM [uid:39][B4728100][AAA ID:50]: Username key not found in set domain
key API
*Jan 17 14:36:24.370: SSS PM [uid:39][B4728100][AAA ID:50]: Client block is NULL in get client
block with handle D8000027
*Jan 17 14:36:24.370: SSS PM [uid:39][B4728100][AAA ID:50]: Updated key list:
*Jan 17 14:36:24.370: SSS PM [uid:39][B4728100][AAA ID:50]: Access-Type = 0 (PPP)
*Jan 17 14:36:24.370: SSS PM [uid:39][B4728100][AAA ID:50]: Input Interface =
"Ethernet0/1.101"
*Jan 17 14:36:24.370: SSS PM [uid:39][B4728100][AAA ID:50]: Converted-Session = 0 (NO)
*Jan 17 14:36:24.370: SSS PM [uid:39][B4728100][AAA ID:50]: Media-Type = 1 (Ethernet)
*Jan 17 14:36:24.370: SSS PM [uid:39][B4728100][AAA ID:50]: Authen-Status = 1
(Unauthenticated)
*Jan 17 14:36:24.370: SSS PM [uid:39][B4728100][AAA ID:50]: Nasport = PPPoEoVLAN: slot 0
adapter 0 port 1 sub-interface 101 IP 0.0.0.0 VPI 0 VCI 0 VLAN 101
*Jan 17 14:36:24.370: SSS PM [uid:39][B4728100][AAA ID:50]: Session-Handle = 1358954575
(5100004F)
*Jan 17 14:36:24.370: SSS PM [uid:39][B4728100][AAA ID:50]: Protocol-Type = 0 (PPP Access
Protocol)
*Jan 17 14:36:24.370: SSS PM [uid:39][B4728100][AAA ID:50]: Unauth-User = "pppoe@local.com"
*Jan 17 14:36:24.370: SSS PM [uid:39][B4728100][AAA ID:50]: Unauth-Domain = "local.com"
*Jan 17 14:36:24.370: SSS PM [uid:39][B4728100][AAA ID:50]: SM Policy invoke - Got More Keys
*Jan 17 14:36:24.370: SSS PM [uid:39][B4728100][AAA ID:50]: Access type PPP
```

*Jan 17 14:36:24.370: SSS PM [uid:39][B4728100][AAA ID:50]: RULE[0]: Start
*Jan 17 14:36:24.370: SSS PM [uid:39][B4728100][AAA ID:50]: RULE[0]: PPPOE/PPP event session-start/11 collect identifier unauthenticated-domain
*Jan 17 14:36:24.370: SSS PM [uid:39][B4728100][AAA ID:50]: State: need-init-keys to initial-req
*Jan 17 14:36:24.370: SSS PM [uid:39][B4728100][AAA ID:50]: RULE[0]: Have key Unauth-Domain
*Jan 17 14:36:24.370: SSS PM [uid:39][B4728100][AAA ID:50]: RULE[1]: Start
*Jan 17 14:36:24.370: SSS PM [uid:39][B4728100][AAA ID:50]: RULE[1]: PPPOE/PPP event session-start/11 collect identifier unauthenticated-domain
*Jan 17 14:36:24.370: SSS PM [uid:39][B4728100][AAA ID:50]: RULE[2]: Start
*Jan 17 14:36:24.370: SSS PM [uid:39][B4728100][AAA ID:50]: RULE[2]: PPPOE/PPP event session-start/12 service-policy type control DOMAIN
*Jan 17 14:36:24.370: SSS PM [uid:39][B4728100][AAA ID:50]: RULE: Match keys against "DOMAIN":
*Jan 17 14:36:24.370: SSS PM [uid:39][B4728100][AAA ID:50]: RULE: Input Interface = "Ethernet0/1.101"
*Jan 17 14:36:24.370: SSS PM [uid:39][B4728100][AAA ID:50]: RULE: Converted-Session = 0 (NO)
*Jan 17 14:36:24.370: SSS PM [uid:39][B4728100][AAA ID:50]: RULE: Media-Type = 1 (Ethernet)
*Jan 17 14:36:24.370: SSS PM [uid:39][B4728100][AAA ID:50]: RULE: Authen-Status = 1 (Unauthenticated)
*Jan 17 14:36:24.370: SSS PM [uid:39][B4728100][AAA ID:50]: RULE: Nasport = PPPoEoVLAN: slot 0 adapter 0 port 1 sub-interface 101 IP 0.0.0.0 VPI 0 VCI 0 VLAN 101
*Jan 17 14:36:24.370: SSS PM [uid:39][B4728100][AAA ID:50]: RULE: Session-Handle = 1358954575 (5100004F)
*Jan 17 14:36:24.370: SSS PM [uid:39][B4728100][AAA ID:50]: RULE: Protocol-Type = 0 (PPP Access Protocol)
*Jan 17 14:36:24.370: SSS PM [uid:39][B4728100][AAA ID:50]: RULE: Unauth-User = "pppoe@local.com"
*Jan 17 14:36:24.370: SSS PM [uid:39][B4728100][AAA ID:50]: RULE: Unauth-Domain = "local.com"
*Jan 17 14:36:24.370: SSS PM [uid:39][B4728100][AAA ID:50]: CONTROL-CLASS-MAP: : [0] match-all PPP-4-LOCAL
*Jan 17 14:36:24.370: SSS PM [uid:39][B4728100][AAA ID:50]: CONTROL-CLASS-MAP: : [0] match identifier unauthenticated-domain local.com [TRUE]
*Jan 17 14:36:24.370: SSS PM [uid:39][B4728100][AAA ID:50]: CONTROL-CLASS-MAP: : [0] match identifier protocol ppp [TRUE]
*Jan 17 14:36:24.370: SSS PM [uid:39][B4728100][AAA ID:50]: CONTROL-CLASS-MAP: : [0] match-all PPP-4-LOCAL
*Jan 17 14:36:24.370: SSS PM [uid:39][B4728100][AAA ID:50]: CONTROL-CLASS-MAP: : PPP-4-LOCAL [TRUE]
*Jan 17 14:36:24.370: SSS PM [uid:39][B4728100][AAA ID:50]: RULE: Matched "DOMAIN/PPP-4-LOCAL event session-start"
*Jan 17 14:36:24.371: SSS PM [uid:39][B4728100][AAA ID:50]: RULE[3]: Start
*Jan 17 14:36:24.371: SSS PM [uid:39][B4728100][AAA ID:50]: RULE[3]: DOMAIN/PPP-4-LOCAL event session-start/20 authenticate aaa list AAA-4-LOCAL
*Jan 17 14:36:24.371: SSS PM [uid:39][B4728100][AAA ID:50]: SIP [PPP] can provide more keys
*Jan 17 14:36:24.371: SSS PM [uid:39][B4728100][AAA ID:50]: RULE[3]: Using AAA-Authen-Method-List AAA-4-LOCAL
*Jan 17 14:36:24.371: SSS PM [uid:39][B4728100][AAA ID:50]: RULE[3]: Need key Auth-User
*Jan 17 14:36:24.371: SSS PM [uid:39][B4728100][AAA ID:50]: RULE[4]: Start
*Jan 17 14:36:24.371: SSS PM [uid:39][B4728100][AAA ID:50]: RULE[4]: DOMAIN/PPP-4-LOCAL event session-start/20 authenticate aaa list AAA-4-LOCAL
*Jan 17 14:36:24.371: SSS PM [uid:39][B4728100][AAA ID:50]: Event <need keys>, State: initial-req to need-init-keys
*Jan 17 14:36:24.371: SSS PM [uid:39][B4728100][AAA ID:50]: Policy reply - Need More Keys
*Jan 17 14:36:24.371: SSS PM [uid:39][B4728100][AAA ID:50]: IDMGR: Need: Auth-User
*Jan 17 14:36:24.371: SSS PM [uid:39][B4728100][AAA ID:50]: IDMGR: ask for authen status
*Jan 17 14:36:24.371: SSS PM [uid:39][B4728100][AAA ID:50]: IDMGR: request, Query Session Authenticated Status
*Jan 17 14:36:24.371: SSS PM [uid:39][B4728100][AAA ID:50]: IDMGR: reply, Query Session Authenticated Status = no-record-found
*Jan 17 14:36:24.371: SSS PM [uid:39][B4728100][AAA ID:50]: IDMGR: session NOT authenticated
*Jan 17 14:36:24.371: SSS PM [uid:39][B4728100][AAA ID:50]: Event <idmgr didn't get keys>, State: need-init-keys to need-init-keys
*Jan 17 14:36:24.371: SSS PM [uid:39][B4728100][AAA ID:50]: Asking client for more keys

```

*Jan 17 14:36:24.371: SSS PM [uid:39][B4728100][AAA ID:50]: Policy reply - Need More Keys
*Jan 17 14:36:24.371: ppp39 PPP: Phase is AUTHENTICATING, Unauthenticated User
*Jan 17 14:36:24.371: AAA/AUTHEN/PPP (00000032): Pick method list 'AAA-4-LOCAL' <= Correct list
for local.com
*Jan 17 14:36:24.371: RADIUS/ENCODE(00000032):Orig. component type = PPPoE
*Jan 17 14:36:24.371: RADIUS: DSL line rate attributes successfully added
*Jan 17 14:36:24.371: RADIUS(00000032): Config NAS IP: 172.16.21.6
*Jan 17 14:36:24.371: RADIUS(00000032): Config NAS IPv6: ::
*Jan 17 14:36:24.371: RADIUS/ENCODE(00000032): acct_session_id: 40
*Jan 17 14:36:24.371: RADIUS(00000032): sending
*Jan 17 14:36:24.371: RADIUS(00000032): Send Access-Request to 172.16.21.5:32645 id 1645/50, len
137
*Jan 17 14:36:24.371: RADIUS: authenticator E2 2A B0 15 24 CA 79 8C - A5 61 E4 1E C5 52 BC EF
*Jan 17 14:36:24.371: RADIUS: Framed-Protocol [7] 6 PPP [1]
*Jan 17 14:36:24.371: RADIUS: User-Name [1] 17 "pppoe@local.com"
*Jan 17 14:36:24.371: RADIUS: User-Password [2] 18 *
*Jan 17 14:36:24.371: RADIUS: NAS-Port-Type [61] 6 Virtual [5]
*Jan 17 14:36:24.371: RADIUS: NAS-Port [5] 6 0
*Jan 17 14:36:24.371: RADIUS: NAS-Port-Id [87] 11 "0/0/1/101"
*Jan 17 14:36:24.371: RADIUS: Vendor, Cisco [26] 41
*Jan 17 14:36:24.371: RADIUS: Cisco AVpair [1] 35 "client-mac-address=aabb.cc00.d210"
*Jan 17 14:36:24.371: RADIUS: Service-Type [6] 6 Framed [2]
*Jan 17 14:36:24.371: RADIUS: NAS-IP-Address [4] 6 172.16.21.6 <= Correct Nas for
Local.com
*Jan 17 14:36:24.371: RADIUS(00000032): Sending a IPv4 Radius Packet
*Jan 17 14:36:24.372: RADIUS(00000032): Started 5 sec timeout
*Jan 17 14:36:24.372: RADIUS: Received from id 1645/50 172.16.21.5:32645, Access-Accept, len 60
*Jan 17 14:36:24.372: RADIUS: authenticator 1A EE FC 44 78 8A 56 DF - 41 57 45 27 4C A7 59 C6
*Jan 17 14:36:24.372: RADIUS: Vendor, Cisco [26] 34
*Jan 17 14:36:24.372: RADIUS: Cisco AVpair [1] 28 "ip:ip-unnumbered=loopback0"
*Jan 17 14:36:24.372: RADIUS: Framed-IP-Address [8] 6 179.1.1.1
*Jan 17 14:36:24.372: RADIUS(00000032): Received from id 1645/50
*Jan 17 14:36:24.373: ppp39 PPP: Phase is FORWARDING, Attempting Forward
*Jan 17 14:36:24.373: SSS PM [uid:39][B4728100][AAA ID:50]: Authen status update; is now
"authen"
*Jan 17 14:36:24.373: SSS PM [uid:39][B4728100][AAA ID:50]: IDMGR: assert authen status "authen"
*Jan 17 14:36:24.373: SSS PM [uid:39][B4728100][AAA ID:50]: IDMGR: send event Session Update
*Jan 17 14:36:24.373: SSS PM [uid:39][B4728100][AAA ID:50]: IDMGR: with username
"pppoe@local.com"
*Jan 17 14:36:24.373: SSS PM [uid:39][B4728100][AAA ID:50]: Session activation: ok
*Jan 17 14:36:24.373: SSS PM [uid:39][B4728100][AAA ID:50]: Client block is NULL in get client
block with handle D8000027
*Jan 17 14:36:24.373: SSS PM [uid:39][B4728100][AAA ID:50]: Updated key list:
*Jan 17 14:36:24.373: SSS PM [uid:39][B4728100][AAA ID:50]: AAA-Attr-List = FB0003D0
*Jan 17 14:36:24.373: SSS PM [uid:39][B4728100][AAA ID:50]: ip-unnumbered 0
"loopback0"
*Jan 17 14:36:24.373: SSS PM [uid:39][B4728100][AAA ID:50]: addr 0
179.1.1.1
*Jan 17 14:36:24.373: SSS PM [uid:39][B4728100][AAA ID:50]: Access-Type = 0 (PPP)
*Jan 17 14:36:24.373: SSS PM [uid:39][B4728100][AAA ID:50]: Unauth-User = "pppoe@local.com"
*Jan 17 14:36:24.373: SSS PM [uid:39][B4728100][AAA ID:50]: Unauth-Domain = "local.com"
*Jan 17 14:36:24.373: SSS PM [uid:39][B4728100][AAA ID:50]: Input Interface =
"Ethernet0/1.101"
*Jan 17 14:36:24.373: SSS PM [uid:39][B4728100][AAA ID:50]: Converted-Session = 0 (NO)
*Jan 17 14:36:24.373: SSS PM [uid:39][B4728100][AAA ID:50]: Media-Type = 1 (Ethernet)
*Jan 17 14:36:24.373: SSS PM [uid:39][B4728100][AAA ID:50]: Authen-Status = 0 (Authenticated)
*Jan 17 14:36:24.373: SSS PM [uid:39][B4728100][AAA ID:50]: Nasport = PPPoEoVLAN: slot 0
adapter 0 port 1 sub-interface 101 IP 0.0.0.0 VPI 0 VCI 0 VLAN 101
*Jan 17 14:36:24.373: SSS PM [uid:39][B4728100][AAA ID:50]: Session-Handle = 1358954575
(5100004F)
*Jan 17 14:36:24.373: SSS PM [uid:39][B4728100][AAA ID:50]: AAA-Authen-Method-List = "AAA-4-
LOCAL"
*Jan 17 14:36:24.373: SSS PM [uid:39][B4728100][AAA ID:50]: Protocol-Type = 0 (PPP Access
Protocol)

```

*Jan 17 14:36:24.373: SSS PM [uid:39][B4728100][AAA ID:50]: Final = 1 (YES)
*Jan 17 14:36:24.373: SSS PM [uid:39][B4728100][AAA ID:50]: Auth-User = "pppoe@local.com"
*Jan 17 14:36:24.373: SSS PM [uid:39][B4728100][AAA ID:50]: Auth-Domain = "local.com"
*Jan 17 14:36:24.373: SSS PM [uid:39][B4728100][AAA ID:50]: SM Policy invoke - Got More Keys
*Jan 17 14:36:24.373: SSS PM [uid:39][B4728100][AAA ID:50]: Access type PPP: final key
*Jan 17 14:36:24.373: SSS PM [uid:39][B4728100][AAA ID:50]: Must apply config before continuing
*Jan 17 14:36:24.373: SSS PM [uid:39][B4728100][AAA ID:50]: Handling Config Request from Client
*Jan 17 14:36:24.373: SSS PM [uid:39][B4728100][AAA ID:50]: Event <got process config req>,
State: need-init-keys to need-init-keys
*Jan 17 14:36:24.373: SSS PM [uid:39][B4728100][AAA ID:50]: Handling Process Config
*Jan 17 14:36:24.373: SSS PM [uid:39][B4728100][AAA ID:50]: Apply config request set to AAA list
Config: ip-unnumbered 0 "loopback0"
Config: addr 0 179.1.1.1
*Jan 17 14:36:24.373: SSS PM [uid:39][B4728100][AAA ID:50]: Sending pppoe@local.com request to
AAA
*Jan 17 14:36:24.373: SSS PM [uid:39][B4728100][AAA ID:50]: SSS PM: Allocating per-user profile
info
*Jan 17 14:36:24.373: SSS PM [uid:39][B4728100][AAA ID:50]: SSS PM: Add per-user profile info to
policy context
*Jan 17 14:36:24.373: SSS AAA AUTHOR [uid:39][AAA ID:50]: Root SIP PPPoE
*Jan 17 14:36:24.373: SSS AAA AUTHOR [uid:39][AAA ID:50]: Enable PPPoE parsing
*Jan 17 14:36:24.373: SSS AAA AUTHOR [uid:39][AAA ID:50]: Enable PPP parsing
*Jan 17 14:36:24.373: SSS PM [uid:39][B4728100][AAA ID:50]: ACTIVE HANDLE[0]: Snapshot captured
in Active context
*Jan 17 14:36:24.373: SSS PM [uid:39][B4728100][AAA ID:50]: ACTIVE HANDLE[0]: Active context
created
*Jan 17 14:36:24.373: SSS AAA AUTHOR [uid:39][AAA ID:50]: Event <make request>, state changed
from idle to authorizing
*Jan 17 14:36:24.373: SSS AAA AUTHOR [uid:39][AAA ID:50]: Active key set to Auth-User
*Jan 17 14:36:24.373: SSS AAA AUTHOR [uid:39][AAA ID:50]: Authorizing key pppoe@local.com
*Jan 17 14:36:24.373: SSS AAA AUTHOR [uid:39][AAA ID:50]: Spoofed AAA reply sent for key
pppoe@local.com
*Jan 17 14:36:24.373: SSS AAA AUTHOR [uid:39][AAA ID:50]: Received an AAA pass
*Jan 17 14:36:24.373: SSS AAA AUTHOR [uid:39][AAA ID:50]: [B4728100]:Reply message not exist
Initial attr ip-unnumbered 0 "loopback0"
Initial attr addr 0 179.1.1.1
*Jan 17 14:36:24.373: SSS PM: PARAMETERIZED-QoS: QoS parameters
*Jan 17 14:36:24.374: SSS PM [uid:39][B4728100][AAA ID:50]: RULE: VRF Parsing routine:
ip-unnumbered 0 "loopback0"
addr 0 179.1.1.1
*Jan 17 14:36:24.374: SSS PM: No VPDN attributes or policy found
*Jan 17 14:36:24.374: SSS PM LTERM [uid:39][AAA ID:50]: Process Attr: ip-unnumbered 0
"loopback0"
*Jan 17 14:36:24.374: SSS AAA AUTHOR [uid:39][AAA ID:50]: Parsed service; Local
*Jan 17 14:36:24.374: SSS AAA AUTHOR [uid:39][AAA ID:50]: SIP PPP[A4700F0] parsed as Success
*Jan 17 14:36:24.374: SSS AAA AUTHOR [uid:39][AAA ID:50]: SIP PPP[B009900] parsed as Ignore
*Jan 17 14:36:24.374: SSS AAA AUTHOR [uid:39][AAA ID:50]: SIP PPPoE[A501AC0] parsed as Success
*Jan 17 14:36:24.374: SSS AAA AUTHOR [uid:39][AAA ID:50]: Event <found service>, state changed
from authorizing to complete
*Jan 17 14:36:24.374: SSS AAA AUTHOR [uid:39][AAA ID:50]: Found service info for key
pppoe@local.com
*Jan 17 14:36:24.374: SSS AAA AUTHOR [uid:39][AAA ID:50]: Active Handle present - AC000006
*Jan 17 14:36:24.374: SSS PM [uid:39][B4728100][AAA ID:50]: Apply config handle [AF0003D3] now
set to [270003DA]
*Jan 17 14:36:24.374: SSS PM [uid:39][B4728100][AAA ID:50]: ACTIVE HANDLE[0]: Snapshot reverted
from Active context to policy context
*Jan 17 14:36:24.374: SSS AAA AUTHOR [uid:39][AAA ID:50]: Freeing Active Handle; SSS Policy
Context Handle = D8000027
*Jan 17 14:36:24.374: SSS PM [uid:39][B4728100][AAA ID:50]: ACTIVE HANDLE[2829]: Released active
handle
*Jan 17 14:36:24.374: SSS AAA AUTHOR [uid:39][AAA ID:50]: PM directive AAA:Local maps to
PM:Local Terminate
*Jan 17 14:36:24.374: SSS PM [uid:39][B4728100][AAA ID:50]: PROFILE: store profile
"pppoe@local.com"

*Jan 17 14:36:24.374: SSS PM: PROFILE-DB: is profile "pppoe@local.com" in DB
*Jan 17 14:36:24.374: SSS PM: PROFILE-DB: Computed hash value = 353387640
*Jan 17 14:36:24.374: SSS PM: PROFILE-DB: No, add new list
*Jan 17 14:36:24.374: SSS PM: PROFILE-DB: create "pppoe@local.com"
*Jan 17 14:36:24.374: SSS PM: PROFILE-DB: create "pppoe@local.com"/B48191BC hdl C80003DC ref
1
*Jan 17 14:36:24.374: SSS PM [uid:39][B4728100][AAA ID:50]: PROFILE: create B481B90C, ref 1
*Jan 17 14:36:24.374: SSS AAA AUTHOR [uid:39][AAA ID:50]: Event <free request>, state changed
from complete to terminal
*Jan 17 14:36:24.374: SSS AAA AUTHOR [uid:39][AAA ID:50]: Cancel request
*Jan 17 14:36:24.374: SSS PM [uid:39][B4728100][AAA ID:50]: Handling Author Found Event
*Jan 17 14:36:24.374: SSS PM [uid:39][B4728100][AAA ID:50]: Plumbing proposed by FSP
*Jan 17 14:36:24.374: SSS PM [uid:39][B4728100][AAA ID:50]: Policy reply - Local Terminate
*Jan 17 14:36:24.374: SSS PM [uid:39][B4728100][AAA ID:50]: FSP info: B45EC130/Local data:
B45EC0E0 SVM: 00000000
*Jan 17 14:36:24.374: SSS PM [uid:39][B4728100][AAA ID:50]: Feature info: B4814320 Type: IP
Config
*Jan 17 14:36:24.374: SSS PM [uid:39][B4728100][AAA ID:50]: : Config level: Per-user
*Jan 17 14:36:24.374: SSS PM [uid:39][B4728100][AAA ID:50]: : IDB type: Sub-if or
not required
*Jan 17 14:36:24.374: SSS PM [uid:39][B4728100][AAA ID:50]: Apply of config finished; provide
the found network service
*Jan 17 14:36:24.374: SSS PM [uid:39][B4728100][AAA ID:50]: Network service found; continuing
rule
*Jan 17 14:36:24.374: SSS PM [uid:39][B4728100][AAA ID:50]: RULE[0]: Continue
*Jan 17 14:36:24.374: SSS PM [uid:39][B4728100][AAA ID:50]: RULE[0]: DOMAIN/PPP-4-LOCAL event
session-start/20 authenticate aaa list AAA-4-LOCAL
*Jan 17 14:36:24.374: SSS PM [uid:39][B4728100][AAA ID:50]: RULE[0]: Run action with no altered
name
*Jan 17 14:36:24.374: SSS PM [uid:39][B4728100][AAA ID:50]: State: need-init-keys to initial-req
*Jan 17 14:36:24.374: SSS PM [uid:39][B4728100][AAA ID:50]: RULE[0]: Have key Auth-User
*Jan 17 14:36:24.374: SSS PM [uid:39][B4728100][AAA ID:50]: RULE[1]: Continue
*Jan 17 14:36:24.374: SSS PM [uid:39][B4728100][AAA ID:50]: RULE[1]: DOMAIN/PPP-4-LOCAL event
session-start/20 authenticate aaa list AAA-4-LOCAL
*Jan 17 14:36:24.374: SSS PM [uid:39][B4728100][AAA ID:50]: RULE[1]: Back to parent rule
*Jan 17 14:36:24.374: SSS PM [uid:39][B4728100][AAA ID:50]: RULE[1]: Run next parent action
*Jan 17 14:36:24.374: SSS PM [uid:39][B4728100][AAA ID:50]: RULE[2]: Continue
*Jan 17 14:36:24.374: SSS PM [uid:39][B4728100][AAA ID:50]: RULE[2]: PPPOE/PPP event session-
start/12 service-policy type control DOMAIN
*Jan 17 14:36:24.374: SSS PM [uid:39][B4728100][AAA ID:50]: Client block is NULL in get client
block with handle D8000027
*Jan 17 14:36:24.374: SSS PM [uid:39][B4728100][AAA ID:50]: RULE[2]: No more actions to run
*Jan 17 14:36:24.374: SSS PM [uid:39][B4728100][AAA ID:50]: RULE[3]: Continue
*Jan 17 14:36:24.374: SSS PM [uid:39][B4728100][AAA ID:50]: RULE[3]: PPPOE/PPP event session-
start/12 service-policy type control DOMAIN
*Jan 17 14:36:24.374: SSS PM [uid:39][B4728100][AAA ID:50]: RULE[3]: Using previously offered
directive Local Terminate
*Jan 17 14:36:24.374: SSS PM [uid:39][B4728100][AAA ID:50]: RULE[4]: Continue
*Jan 17 14:36:24.374: SSS PM [uid:39][B4728100][AAA ID:50]: RULE[4]: PPPOE/PPP event session-
start/12 service-policy type control DOMAIN
*Jan 17 14:36:24.374: SSS PM [uid:39][B4728100][AAA ID:50]: Client block is NULL in get client
block with handle D8000027
*Jan 17 14:36:24.374: SSS PM [uid:39][B4728100][AAA ID:50]: Event <srvf found>, State: initial-
req to wait-for-events
*Jan 17 14:36:24.374: SSS PM [uid:39][B4728100][AAA ID:50]: Handling Service Direction
*Jan 17 14:36:24.374: SSS PM [uid:39][B4728100][AAA ID:50]: Policy reply - Local Terminate
*Jan 17 14:36:24.374: SSS PM [uid:39][B4728100][AAA ID:50]: Plumbing proposed by FSP
*Jan 17 14:36:24.374: SSS PM [uid:39][B4728100][AAA ID:50]: Policy reply - Local Terminate
*Jan 17 14:36:24.374: SSS PM [uid:39][B4728100][AAA ID:50]: RULE: Looking for a rule for event
session-service-found
*Jan 17 14:36:24.374: SSS PM [uid:39][B4728100][AAA ID:50]: RULE: Intf CloneSrc Vt2: service-
rule any: PPPOE
*Jan 17 14:36:24.374: SSS PM [uid:39][B4728100][AAA ID:50]: RULE: Evaluate "PPPOE" for
session-service-found

```

*Jan 17 14:36:24.374: SSS PM [uid:39][B4728100][AAA ID:50]: RULE: Not matched "PPPOE/PPP
event session-start"
*Jan 17 14:36:24.374: SSS PM [uid:39][B4728100][AAA ID:50]: RULE: No match for "PPPOE"
*Jan 17 14:36:24.375: SSS PM [uid:39][B4728100][AAA ID:50]: RULE: Intf InputI/f Et0/1.101:
service-rule any: None
*Jan 17 14:36:24.375: SSS PM [uid:39][B4728100][AAA ID:50]: RULE: Glob: service-rule any: None
*Jan 17 14:36:24.377: SSS PM [uid:39][B4728100][AAA ID:50]: SM Policy invoke - Apply Config
Success
*Jan 17 14:36:24.377: SSS PM [uid:39][B4728100][AAA ID:50]: [PARAMETERIZED-QoS]: No rabapol
context created yet for handle [D8000027], returning compatible
*Jan 17 14:36:24.377: SSS PM [uid:39][B4728100][AAA ID:50]: Event <got apply config success>,
State: wait-for-events to wait-for-events
*Jan 17 14:36:24.377: SSS PM [uid:39][B4728100][AAA ID:50]: Handling Apply Config; SUCCESS
*Jan 17 14:36:24.377: SSS PM [uid:39][B4728100][AAA ID:50]: session start done
*Jan 17 14:36:24.377: SSS PM [uid:39][B4728100][AAA ID:50]: Removed attribute list just
processed
*Jan 17 14:36:24.377: SSS PM [uid:39][B4728100][AAA ID:50]: no callback for callback north
*Jan 17 14:36:24.377: SSS PM [uid:39][B4728100][AAA ID:50]: Client block is NULL in get client
block with handle D8000027
*Jan 17 14:36:24.377: SSS PM [uid:39][B4728100][AAA ID:50]: Null client block; Can't update RP
*Jan 17 14:36:24.377: SSS PM [uid:39][B4728100][AAA ID:50]: Client block is NULL in get client
block with handle D8000027
*Jan 17 14:36:24.377: SSS PM [uid:39][B4728100][AAA ID:50]: No pending events to process
*Jan 17 14:36:24.377: SSS PM [uid:39][B4728100][AAA ID:50]: No pending eventstst
*Jan 17 14:36:24.377: AAA/BIND(00000032): Bind i/f Virtual-Access2.1
*Jan 17 14:36:24.377: Vi2.1 PPP: Phase is AUTHENTICATING, Authenticated User
*Jan 17 14:36:24.377: Vi2.1 PAP: O AUTH-ACK id 1 len 5
*Jan 17 14:36:24.378: Vi2.1 PPP: No AAA accounting method list
*Jan 17 14:36:24.378: Vi2.1 PPP: Phase is UP
*Jan 17 14:36:24.378: Vi2.1 IPCP: Protocol configured, start CP. state[Initial]
*Jan 17 14:36:24.378: Vi2.1 IPCP: Event[OPEN] State[Initial to Starting]
*Jan 17 14:36:24.378: Vi2.1 IPCP: O CONFREQ [Starting] id 1 len 10
*Jan 17 14:36:24.378: Vi2.1 IPCP: Address 172.19.1.2 (0x0306AC130102)
*Jan 17 14:36:24.378: Vi2.1 IPCP: Event[UP] State[Starting to REQsent]
*Jan 17 14:36:24.379: Vi2.1 IPCP: I CONFREQ [REQsent] id 1 len 10
*Jan 17 14:36:24.379: Vi2.1 IPCP: Address 0.0.0.0 (0x030600000000)
*Jan 17 14:36:24.379: Vi2.1 IPCP AUTHOR: Start. Her address 0.0.0.0, we want 0.0.0.0
*Jan 17 14:36:24.379: Vi2.1 IPCP AUTHOR: Done. Her address 0.0.0.0, we want 179.1.1.1
*Jan 17 14:36:24.379: Vi2.1 IPCP: O CONFNAK [REQsent] id 1 len 10
*Jan 17 14:36:24.379: Vi2.1 IPCP: Address 179.1.1.1 (0x0306B3010101)
*Jan 17 14:36:24.379: Vi2.1 IPCP: Event[Receive ConfReq-] State[REQsent to REQsent]
*Jan 17 14:36:24.379: Vi2.1 CDPCP: I CONFREQ [UNKNOWN] id 1 len 4
*Jan 17 14:36:24.379: Vi2.1 LCP: O PROTREJ [Open] id 3 len 10 protocol CDPCP (0x01010004)
*Jan 17 14:36:24.379: Vi2.1 IPCP: I CONFACK [REQsent] id 1 len 10
*Jan 17 14:36:24.379: Vi2.1 IPCP: Address 172.19.1.2 (0x0306AC130102)
*Jan 17 14:36:24.379: Vi2.1 IPCP: Event[Receive ConfAck] State[REQsent to ACKrcvd]
*Jan 17 14:36:24.380: Vi2.1 IPCP: I CONFREQ [ACKrcvd] id 2 len 10
*Jan 17 14:36:24.380: Vi2.1 IPCP: Address 179.1.1.1 (0x0306B3010101)
*Jan 17 14:36:24.380: Vi2.1 IPCP: O CONFACK [ACKrcvd] id 2 len 10
*Jan 17 14:36:24.380: Vi2.1 IPCP: Address 179.1.1.1 (0x0306B3010101)
*Jan 17 14:36:24.380: Vi2.1 IPCP: Event[Receive ConfReq+] State[ACKrcvd to Open]
*Jan 17 14:36:24.401: Vi2.1 IPCP: State is Open
*Jan 17 14:36:24.401: Vi2.1 Added to neighbor route AVL tree: topoid 0, address 179.1.1.1
*Jan 17 14:36:24.401: Vi2.1 IPCP: Install route to 179.1.1.1

```

Cette sortie de débogage reflète comment l'utilisateur distant basé sur le nom de domaine lns.com est authentifié et expédié au périphérique LNS.

```

*Jan 17 14:37:17.353: SSS PM [uid:40][B4728388][AAA ID:51]: Authen status update; is now
"unauthen"
*Jan 17 14:37:17.353: SSS PM [uid:40][B4728388][AAA ID:51]: IDMGR: assert authen status
"unauthen"
*Jan 17 14:37:17.353: SSS PM [uid:40][B4728388][AAA ID:51]: IDMGR: send event Session Update
*Jan 17 14:37:17.353: SSS PM [uid:40][B4728388][AAA ID:51]: Username key not found in set domain

```

key API

*Jan 17 14:37:17.353: SSS PM [uid:40][B4728388][AAA ID:51]: Username key not found in set domain

key API

*Jan 17 14:37:17.353: SSS PM [uid:40][B4728388][AAA ID:51]: Updated NAS port for AAA ID 51

*Jan 17 14:37:17.353: SSS PM [uid:40][B4728388][AAA ID:51]: IDMGR: send event Session Update

*Jan 17 14:37:17.354: SSS PM [uid:40][B4728388][AAA ID:51]: Client block is NULL in get client block with handle 1D000028

*Jan 17 14:37:17.354: SSS PM [uid:40][B4728388][AAA ID:51]: Updated key list:

*Jan 17 14:37:17.354: SSS PM [uid:40][B4728388][AAA ID:51]: Input Interface =

"Ethernet0/1.102"

*Jan 17 14:37:17.354: SSS PM [uid:40][B4728388][AAA ID:51]: Access-Type = 3 (PPPoE)

*Jan 17 14:37:17.354: SSS PM [uid:40][B4728388][AAA ID:51]: Protocol-Type = 0 (PPP Access Protocol)

*Jan 17 14:37:17.354: SSS PM [uid:40][B4728388][AAA ID:51]: Media-Type = 1 (Ethernet)

*Jan 17 14:37:17.354: SSS PM [uid:40][B4728388][AAA ID:51]: Authen-Status = 1 (Unauthenticated)

*Jan 17 14:37:17.354: SSS PM [uid:40][B4728388][AAA ID:51]: Nasport = PPPoEoVLAN: slot 0 adapter 0 port 1 sub-interface 102 IP 0.0.0.0 VPI 0 VCI 0 VLAN 102

*Jan 17 14:37:17.354: SSS PM [uid:40][B4728388][AAA ID:51]: Username key not found in set domain key API

*Jan 17 14:37:17.354: SSS PM [uid:40][B4728388][AAA ID:51]: Username key not found in set domain key API

*Jan 17 14:37:17.354: SSS PM [uid:40][B4728388][AAA ID:51]: Client block is NULL in get client block with handle 1D000028

*Jan 17 14:37:17.354: SSS PM [uid:40][B4728388][AAA ID:51]: Updated key list:

*Jan 17 14:37:17.354: SSS PM [uid:40][B4728388][AAA ID:51]: Input Interface =

"Ethernet0/1.102"

*Jan 17 14:37:17.354: SSS PM [uid:40][B4728388][AAA ID:51]: Access-Type = 3 (PPPoE)

*Jan 17 14:37:17.354: SSS PM [uid:40][B4728388][AAA ID:51]: Protocol-Type = 0 (PPP Access Protocol)

*Jan 17 14:37:17.354: SSS PM [uid:40][B4728388][AAA ID:51]: Media-Type = 1 (Ethernet)

*Jan 17 14:37:17.354: SSS PM [uid:40][B4728388][AAA ID:51]: Authen-Status = 1 (Unauthenticated)

*Jan 17 14:37:17.354: SSS PM [uid:40][B4728388][AAA ID:51]: Nasport = PPPoEoVLAN: slot 0 adapter 0 port 1 sub-interface 102 IP 0.0.0.0 VPI 0 VCI 0 VLAN 102

*Jan 17 14:37:17.354: SSS PM [uid:40][B4728388][AAA ID:51]: Session-Handle = 385876049 (17000051)

*Jan 17 14:37:17.354: SSS PM [uid:40][B4728388][AAA ID:51]: SM Policy invoke - Service Selection Request

*Jan 17 14:37:17.354: SSS PM [uid:40][B4728388][AAA ID:51]: Access type PPPoE

*Jan 17 14:37:17.354: SSS PM [uid:40][B4728388][AAA ID:51]: Successfully added key SUBTYPE_CONVERTED as FALSE

*Jan 17 14:37:17.354: SSS PM [uid:40][B4728388][AAA ID:51]: RULE: Looking for a rule for event session-start

*Jan 17 14:37:17.354: SSS PM [uid:40][B4728388][AAA ID:51]: RULE: Intf CloneSrc Vt2: service-rule any: PPPOE

*Jan 17 14:37:17.354: SSS PM [uid:40][B4728388][AAA ID:51]: RULE: Evaluate "PPPOE" for session-start

*Jan 17 14:37:17.354: SSS PM [uid:40][B4728388][AAA ID:51]: RULE: Match keys against "PPPOE":

*Jan 17 14:37:17.354: SSS PM [uid:40][B4728388][AAA ID:51]: RULE: Input Interface =

"Ethernet0/1.102"

*Jan 17 14:37:17.354: SSS PM [uid:40][B4728388][AAA ID:51]: RULE: Converted-Session = 0 (NO)

*Jan 17 14:37:17.354: SSS PM [uid:40][B4728388][AAA ID:51]: RULE: Protocol-Type = 0 (PPP Access Protocol)

*Jan 17 14:37:17.354: SSS PM [uid:40][B4728388][AAA ID:51]: RULE: Media-Type = 1 (Ethernet)

*Jan 17 14:37:17.354: SSS PM [uid:40][B4728388][AAA ID:51]: RULE: Authen-Status = 1

(Unauthenticated)

*Jan 17 14:37:17.354: SSS PM [uid:40][B4728388][AAA ID:51]: RULE: Nasport = PPPoEoVLAN: slot 0 adapter 0 port 1 sub-interface 102 IP 0.0.0.0 VPI 0 VCI 0 VLAN 102

*Jan 17 14:37:17.354: SSS PM [uid:40][B4728388][AAA ID:51]: RULE: Session-Handle = 385876049 (17000051)

*Jan 17 14:37:17.354: SSS PM [uid:40][B4728388][AAA ID:51]: CONTROL-CLASS-MAP: : [0] match-all PPP

*Jan 17 14:37:17.354: SSS PM [uid:40][B4728388][AAA ID:51]: CONTROL-CLASS-MAP: : [0] match


```
identifier protocol ppp [TRUE]
*Jan 17 14:37:17.354: SSS PM [uid:40][B4728388][AAA ID:51]: CONTROL-CLASS-MAP: : [0] match-all
PPP
*Jan 17 14:37:17.354: SSS PM [uid:40][B4728388][AAA ID:51]: CONTROL-CLASS-MAP: : PPP [TRUE]
*Jan 17 14:37:17.354: SSS PM [uid:40][B4728388][AAA ID:51]: RULE:      Matched "PPPOE/PPP event
session-start"
*Jan 17 14:37:17.354: SSS PM [uid:40][B4728388][AAA ID:51]: RULE:      Matched "PPPOE/PPP event
session-start/11 collect identifier unauthenticated-domain "
*Jan 17 14:37:17.354: SSS PM [uid:40][B4728388][AAA ID:51]: RULE[0]: Start
*Jan 17 14:37:17.354: SSS PM [uid:40][B4728388][AAA ID:51]: RULE[0]: PPPOE/PPP event session-
start/11 collect identifier unauthenticated-domain
*Jan 17 14:37:17.354: SSS PM [uid:40][B4728388][AAA ID:51]: SIP [PPPoE] can provide more keys
*Jan 17 14:37:17.354: SSS PM [uid:40][B4728388][AAA ID:51]: RULE[0]: Need key Unauth-Domain
*Jan 17 14:37:17.354: SSS PM [uid:40][B4728388][AAA ID:51]: RULE[1]: Start
*Jan 17 14:37:17.354: SSS PM [uid:40][B4728388][AAA ID:51]: RULE[1]: PPPOE/PPP event session-
start/11 collect identifier unauthenticated-domain
*Jan 17 14:37:17.354: SSS PM [uid:40][B4728388][AAA ID:51]: Event <need keys>, State: initial-
req to need-init-keys
*Jan 17 14:37:17.354: SSS PM [uid:40][B4728388][AAA ID:51]: Policy reply - Need More Keys
*Jan 17 14:37:17.354: SSS PM [uid:40][B4728388][AAA ID:51]: IDMGR: Need:  Unauth-Domain
*Jan 17 14:37:17.354: SSS PM [uid:40][B4728388][AAA ID:51]: Asking client for more keys
*Jan 17 14:37:17.354: SSS PM [uid:40][B4728388][AAA ID:51]: Policy reply - Need More Keys
*Jan 17 14:37:17.355: PPP: Alloc Context [B174D034]
*Jan 17 14:37:17.355: ppp40 PPP: Phase is ESTABLISHING
*Jan 17 14:37:17.355: SSS PM: ANCP not enabled on 'Ethernet0/1.102' - not retrieving default
shaper value
*Jan 17 14:37:17.355: ppp40 PPP: Using vpn set call direction
*Jan 17 14:37:17.355: ppp40 PPP: Treating connection as a callin
*Jan 17 14:37:17.355: ppp40 PPP: Session handle[8E000028] Session id[40]
*Jan 17 14:37:17.355: ppp40 LCP: Event[OPEN] State[Initial to Starting]
*Jan 17 14:37:17.355: ppp40 PPP LCP: Enter passive mode, state[Stopped]
*Jan 17 14:37:17.357: ppp40 LCP: I CONFREQ [Stopped] id 1 len 10
*Jan 17 14:37:17.357: ppp40 LCP:      MagicNumber 0xBCDA70F0 (0x0506BCDA70F0)
*Jan 17 14:37:17.357: ppp40 LCP: O CONFREQ [Stopped] id 1 len 18
*Jan 17 14:37:17.357: ppp40 LCP:      MRU 1492 (0x010405D4)
*Jan 17 14:37:17.357: ppp40 LCP:      AuthProto PAP (0x0304C023)
*Jan 17 14:37:17.357: ppp40 LCP:      MagicNumber 0x010E7131 (0x0506010E7131)
*Jan 17 14:37:17.357: ppp40 LCP: O CONFACK [Stopped] id 1 len 10
*Jan 17 14:37:17.357: ppp40 LCP:      MagicNumber 0xBCDA70F0 (0x0506BCDA70F0)
*Jan 17 14:37:17.357: ppp40 LCP: Event[Receive ConfReq+] State[Stopped to ACKsent]
*Jan 17 14:37:17.357: ppp40 LCP: I CONFNAK [ACKsent] id 1 len 8
*Jan 17 14:37:17.357: ppp40 LCP:      MRU 1500 (0x010405DC)
*Jan 17 14:37:17.357: ppp40 LCP: O CONFREQ [ACKsent] id 2 len 18
*Jan 17 14:37:17.357: ppp40 LCP:      MRU 1500 (0x010405DC)
*Jan 17 14:37:17.357: ppp40 LCP:      AuthProto PAP (0x0304C023)
*Jan 17 14:37:17.357: ppp40 LCP:      MagicNumber 0x010E7131 (0x0506010E7131)
*Jan 17 14:37:17.357: ppp40 LCP: Event[Receive ConfNak/Rej] State[ACKsent to ACKsent]
*Jan 17 14:37:17.357: ppp40 LCP: I CONFACK [ACKsent] id 2 len 18
*Jan 17 14:37:17.357: ppp40 LCP:      MRU 1500 (0x010405DC)
*Jan 17 14:37:17.357: ppp40 LCP:      AuthProto PAP (0x0304C023)
*Jan 17 14:37:17.357: ppp40 LCP:      MagicNumber 0x010E7131 (0x0506010E7131)
*Jan 17 14:37:17.357: ppp40 LCP: Event[Receive ConfAck] State[ACKsent to Open]
*Jan 17 14:37:17.361: ppp40 PPP: Phase is AUTHENTICATING, by this end
*Jan 17 14:37:17.361: ppp40 LCP: State is Open
*Jan 17 14:37:17.388: ppp40 PAP: I AUTH-REQ id 1 len 24 from "pppoe@lns.com"
*Jan 17 14:37:17.388: ppp40 PAP: Authenticating peer pppoe@lns.com
*Jan 17 14:37:17.388: ppp40 PPP: Phase is FORWARDING, Attempting Forward
*Jan 17 14:37:17.388: SSS PM [uid:40][B4728388][AAA ID:51]: Username key not found in set domain
key API
*Jan 17 14:37:17.388: SSS PM [uid:40][B4728388][AAA ID:51]: Client block is NULL in get client
block with handle 1D000028
*Jan 17 14:37:17.388: SSS PM [uid:40][B4728388][AAA ID:51]: Updated key list:
*Jan 17 14:37:17.388: SSS PM [uid:40][B4728388][AAA ID:51]:      Access-Type = 0 (PPP)
*Jan 17 14:37:17.388: SSS PM [uid:40][B4728388][AAA ID:51]:      Input Interface =
```

```
"Ethernet0/1.102"
*Jan 17 14:37:17.388: SSS PM [uid:40][B4728388][AAA ID:51]:   Converted-Session = 0 (NO)
*Jan 17 14:37:17.388: SSS PM [uid:40][B4728388][AAA ID:51]:   Media-Type = 1 (Ethernet)
*Jan 17 14:37:17.388: SSS PM [uid:40][B4728388][AAA ID:51]:   Authen-Status = 1
(Unauthenticated)
*Jan 17 14:37:17.388: SSS PM [uid:40][B4728388][AAA ID:51]:   Nasport = PPPoEoVLAN: slot 0
adapter 0 port 1 sub-interface 102 IP 0.0.0.0 VPI 0 VCI 0 VLAN 102
*Jan 17 14:37:17.388: SSS PM [uid:40][B4728388][AAA ID:51]:   Session-Handle = 385876049
(17000051)
*Jan 17 14:37:17.388: SSS PM [uid:40][B4728388][AAA ID:51]:   Protocol-Type = 0 (PPP Access
Protocol)
*Jan 17 14:37:17.388: SSS PM [uid:40][B4728388][AAA ID:51]:   Unauth-User = "pppoe@lns.com"
*Jan 17 14:37:17.388: SSS PM [uid:40][B4728388][AAA ID:51]:   Unauth-Domain = "lns.com"
*Jan 17 14:37:17.388: SSS PM [uid:40][B4728388][AAA ID:51]:   SM Policy invoke - Got More Keys
*Jan 17 14:37:17.388: SSS PM [uid:40][B4728388][AAA ID:51]:   Access type PPP
*Jan 17 14:37:17.388: SSS PM [uid:40][B4728388][AAA ID:51]:   RULE[0]: Start
*Jan 17 14:37:17.388: SSS PM [uid:40][B4728388][AAA ID:51]:   RULE[0]: PPPOE/PPP event session-
start/11 collect identifier unauthenticated-domain
*Jan 17 14:37:17.388: SSS PM [uid:40][B4728388][AAA ID:51]:   State: need-init-keys to initial-req
*Jan 17 14:37:17.389: SSS PM [uid:40][B4728388][AAA ID:51]:   RULE[0]: Have key Unauth-Domain
*Jan 17 14:37:17.389: SSS PM [uid:40][B4728388][AAA ID:51]:   RULE[1]: Start
*Jan 17 14:37:17.389: SSS PM [uid:40][B4728388][AAA ID:51]:   RULE[1]: PPPOE/PPP event session-
start/11 collect identifier unauthenticated-domain
*Jan 17 14:37:17.389: SSS PM [uid:40][B4728388][AAA ID:51]:   RULE[2]: Start
*Jan 17 14:37:17.389: SSS PM [uid:40][B4728388][AAA ID:51]:   RULE[2]: PPPOE/PPP event session-
start/12 service-policy type control DOMAIN
*Jan 17 14:37:17.389: SSS PM [uid:40][B4728388][AAA ID:51]:   RULE:       Match keys against
"DOMAIN":
*Jan 17 14:37:17.389: SSS PM [uid:40][B4728388][AAA ID:51]:   RULE:       Input Interface =
"Ethernet0/1.102"
*Jan 17 14:37:17.389: SSS PM [uid:40][B4728388][AAA ID:51]:   RULE:       Converted-Session = 0 (NO)
*Jan 17 14:37:17.389: SSS PM [uid:40][B4728388][AAA ID:51]:   RULE:       Media-Type = 1 (Ethernet)
*Jan 17 14:37:17.389: SSS PM [uid:40][B4728388][AAA ID:51]:   RULE:       Authen-Status = 1
(Unauthenticated)
*Jan 17 14:37:17.389: SSS PM [uid:40][B4728388][AAA ID:51]:   RULE:       Nasport = PPPoEoVLAN: slot
0 adapter 0 port 1 sub-interface 102 IP 0.0.0.0 VPI 0 VCI 0 VLAN 102
*Jan 17 14:37:17.389: SSS PM [uid:40][B4728388][AAA ID:51]:   RULE:       Session-Handle = 385876049
(17000051)
*Jan 17 14:37:17.389: SSS PM [uid:40][B4728388][AAA ID:51]:   RULE:       Protocol-Type = 0 (PPP
Access Protocol)
*Jan 17 14:37:17.389: SSS PM [uid:40][B4728388][AAA ID:51]:   RULE:       Unauth-User =
"pppoe@lns.com"
*Jan 17 14:37:17.389: SSS PM [uid:40][B4728388][AAA ID:51]:   RULE:       Unauth-Domain = "lns.com"
*Jan 17 14:37:17.389: SSS PM [uid:40][B4728388][AAA ID:51]:   CONTROL-CLASS-MAP: : [0] match-all
PPP-4-LOCAL
*Jan 17 14:37:17.389: SSS PM [uid:40][B4728388][AAA ID:51]:   CONTROL-CLASS-MAP: : [0] match
identifier unauthenticated-domain local.com [FALSE] [DONE]
*Jan 17 14:37:17.389: SSS PM [uid:40][B4728388][AAA ID:51]:   CONTROL-CLASS-MAP: : [0] match-all
PPP-4-LOCAL
*Jan 17 14:37:17.389: SSS PM [uid:40][B4728388][AAA ID:51]:   CONTROL-CLASS-MAP: : PPP-4-LOCAL
[FALSE]
*Jan 17 14:37:17.389: SSS PM [uid:40][B4728388][AAA ID:51]:   RULE:       No match "DOMAIN/PPP-4-
LOCAL event session-start"
*Jan 17 14:37:17.389: SSS PM [uid:40][B4728388][AAA ID:51]:   CONTROL-CLASS-MAP: : [0] match-all
PPP-4-FORWARD
*Jan 17 14:37:17.389: SSS PM [uid:40][B4728388][AAA ID:51]:   CONTROL-CLASS-MAP: : [0] match
identifier unauthenticated-domain lns.com [TRUE]
*Jan 17 14:37:17.389: SSS PM [uid:40][B4728388][AAA ID:51]:   CONTROL-CLASS-MAP: : [0] match
identifier protocol ppp [TRUE]
*Jan 17 14:37:17.389: SSS PM [uid:40][B4728388][AAA ID:51]:   CONTROL-CLASS-MAP: : [0] match-all
PPP-4-FORWARD
*Jan 17 14:37:17.389: SSS PM [uid:40][B4728388][AAA ID:51]:   CONTROL-CLASS-MAP: : PPP-4-FORWARD
[TRUE]
*Jan 17 14:37:17.389: SSS PM [uid:40][B4728388][AAA ID:51]:   RULE:       Matched "DOMAIN/PPP-4-
```

FORWARD event session-start"

```
*Jan 17 14:37:17.389: SSS PM [uid:40][B4728388][AAA ID:51]: RULE[3]: Start
*Jan 17 14:37:17.389: SSS PM [uid:40][B4728388][AAA ID:51]: RULE[3]: DOMAIN/PPP-4-FORWARD event
session-start/20 authenticate aaa list AAA-4-FORWARD
*Jan 17 14:37:17.389: SSS PM [uid:40][B4728388][AAA ID:51]: SIP [PPP] can provide more keys
*Jan 17 14:37:17.389: SSS PM [uid:40][B4728388][AAA ID:51]: RULE[3]: Using AAA-Authen-Method-
List AAA-4-FORWARD
*Jan 17 14:37:17.389: SSS PM [uid:40][B4728388][AAA ID:51]: RULE[3]: Need key Auth-User
*Jan 17 14:37:17.389: SSS PM [uid:40][B4728388][AAA ID:51]: RULE[4]: Start
*Jan 17 14:37:17.389: SSS PM [uid:40][B4728388][AAA ID:51]: RULE[4]: DOMAIN/PPP-4-FORWARD event
session-start/20 authenticate aaa list AAA-4-FORWARD
*Jan 17 14:37:17.389: SSS PM [uid:40][B4728388][AAA ID:51]: Event <need keys>, State: initial-
req to need-init-keys
*Jan 17 14:37:17.389: SSS PM [uid:40][B4728388][AAA ID:51]: Policy reply - Need More Keys
*Jan 17 14:37:17.389: SSS PM [uid:40][B4728388][AAA ID:51]: IDMGR: Need: Auth-User
*Jan 17 14:37:17.389: SSS PM [uid:40][B4728388][AAA ID:51]: IDMGR: ask for authen status
*Jan 17 14:37:17.389: SSS PM [uid:40][B4728388][AAA ID:51]: IDMGR: request, Query Session
Authenticated Status
*Jan 17 14:37:17.389: SSS PM [uid:40][B4728388][AAA ID:51]: IDMGR: reply, Query Session
Authenticated Status = no-record-found
*Jan 17 14:37:17.389: SSS PM [uid:40][B4728388][AAA ID:51]: IDMGR: session NOT authenticated
*Jan 17 14:37:17.389: SSS PM [uid:40][B4728388][AAA ID:51]: Event <idmgr didn't get keys>,
State: need-init-keys to need-init-keys
*Jan 17 14:37:17.389: SSS PM [uid:40][B4728388][AAA ID:51]: Asking client for more keys
*Jan 17 14:37:17.389: SSS PM [uid:40][B4728388][AAA ID:51]: Policy reply - Need More Keys
*Jan 17 14:37:17.389: ppp40 PPP: Phase is AUTHENTICATING, Unauthenticated User
*Jan 17 14:37:17.389: AAA/AUTHEN/PPP (00000033): Pick method list 'AAA-4-FORWARD' <== correct
method
*Jan 17 14:37:17.389: RADIUS/ENCODE(00000033):Orig. component type = PPPoE
*Jan 17 14:37:17.389: RADIUS: DSL line rate attributes successfully added
*Jan 17 14:37:17.390: RADIUS(00000033): Config NAS IP: 172.17.21.6
*Jan 17 14:37:17.390: RADIUS(00000033): Config NAS IPv6: ::
*Jan 17 14:37:17.390: RADIUS/ENCODE(00000033): acct_session_id: 41
*Jan 17 14:37:17.390: RADIUS(00000033): sending
*Jan 17 14:37:17.390: RADIUS(00000033): Send Access-Request to 172.16.21.5:11645 id 1645/51, len
135
*Jan 17 14:37:17.390: RADIUS: authenticator 76 AF BF 7B 54 7B 38 A7 - 2A BB EF 93 CB BA 0A 45
*Jan 17 14:37:17.390: RADIUS: Framed-Protocol [7] 6 PPP [1]
*Jan 17 14:37:17.390: RADIUS: User-Name [1] 15 "pppoe@lns.com"
*Jan 17 14:37:17.390: RADIUS: User-Password [2] 18 *
*Jan 17 14:37:17.390: RADIUS: NAS-Port-Type [61] 6 Virtual [5]
*Jan 17 14:37:17.390: RADIUS: NAS-Port [5] 6 0
*Jan 17 14:37:17.390: RADIUS: NAS-Port-Id [87] 11 "0/0/1/102"
*Jan 17 14:37:17.390: RADIUS: Vendor, Cisco [26] 41
*Jan 17 14:37:17.390: RADIUS: Cisco AVpair [1] 35 "client-mac-address=aabb.cc00.d210"
*Jan 17 14:37:17.390: RADIUS: Service-Type [6] 6 Framed [2]
*Jan 17 14:37:17.390: RADIUS: NAS-IP-Address [4] 6 172.17.21.6 <=== Correct NAS
(source ip)
*Jan 17 14:37:17.390: RADIUS(00000033): Sending a IPv4 Radius Packet
*Jan 17 14:37:17.390: RADIUS(00000033): Started 5 sec timeout
*Jan 17 14:37:17.391: RADIUS: Received from id 1645/51 172.16.21.5:11645, Access-Accept, len 105
*Jan 17 14:37:17.391: RADIUS: authenticator 3C 38 A2 16 EA 26 BE 4A - FD 69 49 CA E5 69 E7 04
*Jan 17 14:37:17.391: RADIUS: Service-Type [6] 6 Outbound [5]
*Jan 17 14:37:17.391: RADIUS: Tunnel-Type [64] 6 00:L2TP [3]
*Jan 17 14:37:17.391: RADIUS: Framed-Protocol [7] 6 PPP [1]
*Jan 17 14:37:17.391: RADIUS: Tunnel-Medium-Type [65] 6 00:IPv4 [1]
*Jan 17 14:37:17.391: RADIUS: Tunnel-Client-Auth-I[90] 16 "lac-via-radius"
*Jan 17 14:37:17.391: RADIUS: Tunnel-Password [69] 21 00:*
*Jan 17 14:37:17.391: RADIUS: Tunnel-Server-Endpoi[67] 12 "172.19.1.1"
*Jan 17 14:37:17.391: RADIUS: Tunnel-Client-Endpoi[66] 12 "172.19.1.2"
*Jan 17 14:37:17.391: RADIUS(00000033): Received from id 1645/51
*Jan 17 14:37:17.391: ppp40 PPP: Phase is FORWARDING, Attempting Forward
*Jan 17 14:37:17.391: SSS PM [uid:40][B4728388][AAA ID:51]: Authen status update; is now
"authen"
```

```

*Jan 17 14:37:17.391: SSS PM [uid:40][B4728388][AAA ID:51]: IDMGR: assert authen status "authen"
*Jan 17 14:37:17.391: SSS PM [uid:40][B4728388][AAA ID:51]: IDMGR: send event Session Update
*Jan 17 14:37:17.391: SSS PM [uid:40][B4728388][AAA ID:51]: IDMGR: with username
"pppoe@lns.com"
*Jan 17 14:37:17.391: SSS PM [uid:40][B4728388][AAA ID:51]: Session activation: ok
*Jan 17 14:37:17.391: SSS PM [uid:40][B4728388][AAA ID:51]: Client block is NULL in get client
block with handle 1D000028
*Jan 17 14:37:17.391: SSS PM [uid:40][B4728388][AAA ID:51]: Updated key list:
*Jan 17 14:37:17.392: SSS PM [uid:40][B4728388][AAA ID:51]:   AAA-Attr-List = F50003F4
*Jan 17 14:37:17.392: SSS PM [uid:40][B4728388][AAA ID:51]:   service-type           0   5
[Outbound]
*Jan 17 14:37:17.392: SSS PM [uid:40][B4728388][AAA ID:51]:   tunnel-type             0   3
[l2tp]
*Jan 17 14:37:17.392: SSS PM [uid:40][B4728388][AAA ID:51]:   Framed-Protocol        0   1 [PPP]
*Jan 17 14:37:17.392: SSS PM [uid:40][B4728388][AAA ID:51]:   tunnel-medium-type     0   1
[IPv4]
*Jan 17 14:37:17.392: SSS PM [uid:40][B4728388][AAA ID:51]:   tunnel-id              0   "lac-
via-radius"
*Jan 17 14:37:17.392: SSS PM [uid:40][B4728388][AAA ID:51]:   tunnel-password        0
<hidden>
*Jan 17 14:37:17.392: SSS PM [uid:40][B4728388][AAA ID:51]:   tunnel-server-endpoi  0
"172.19.1.1"
*Jan 17 14:37:17.392: SSS PM [uid:40][B4728388][AAA ID:51]:   tunnel-client-endpoi  0
"172.19.1.2"
*Jan 17 14:37:17.392: SSS PM [uid:40][B4728388][AAA ID:51]:   Access-Type = 0 (PPP)
*Jan 17 14:37:17.392: SSS PM [uid:40][B4728388][AAA ID:51]:   Unauth-User = "pppoe@lns.com"
*Jan 17 14:37:17.392: SSS PM [uid:40][B4728388][AAA ID:51]:   Unauth-Domain = "lns.com"
*Jan 17 14:37:17.392: SSS PM [uid:40][B4728388][AAA ID:51]:   Input Interface =
"Ethernet0/1.102"
*Jan 17 14:37:17.392: SSS PM [uid:40][B4728388][AAA ID:51]:   Converted-Session = 0 (NO)
*Jan 17 14:37:17.392: SSS PM [uid:40][B4728388][AAA ID:51]:   Media-Type = 1 (Ethernet)
*Jan 17 14:37:17.392: SSS PM [uid:40][B4728388][AAA ID:51]:   Authen-Status = 0 (Authenticated)
*Jan 17 14:37:17.392: SSS PM [uid:40][B4728388][AAA ID:51]:   Nasport = PPPoEoVLAN: slot 0
adapter 0 port 1 sub-interface 102 IP 0.0.0.0 VPI 0 VCI 0 VLAN 102
*Jan 17 14:37:17.392: SSS PM [uid:40][B4728388][AAA ID:51]:   Session-Handle = 385876049
(17000051)
*Jan 17 14:37:17.392: SSS PM [uid:40][B4728388][AAA ID:51]:   AAA-Authen-Method-List = "AAA-4-
FORWARD"
*Jan 17 14:37:17.392: SSS PM [uid:40][B4728388][AAA ID:51]:   Protocol-Type = 0 (PPP Access
Protocol)
*Jan 17 14:37:17.392: SSS PM [uid:40][B4728388][AAA ID:51]:   Final = 1 (YES)
*Jan 17 14:37:17.392: SSS PM [uid:40][B4728388][AAA ID:51]:   Auth-User = "pppoe@lns.com"
*Jan 17 14:37:17.392: SSS PM [uid:40][B4728388][AAA ID:51]:   Auth-Domain = "lns.com"
*Jan 17 14:37:17.392: SSS PM [uid:40][B4728388][AAA ID:51]: SM Policy invoke - Got More Keys
*Jan 17 14:37:17.392: SSS PM [uid:40][B4728388][AAA ID:51]: Access type PPP: final key
*Jan 17 14:37:17.392: SSS PM [uid:40][B4728388][AAA ID:51]: Must apply config before continuing
*Jan 17 14:37:17.392: SSS PM [uid:40][B4728388][AAA ID:51]: Handling Config Request from Client
*Jan 17 14:37:17.392: SSS PM [uid:40][B4728388][AAA ID:51]: Event <got process config req>,
State: need-init-keys to need-init-keys
*Jan 17 14:37:17.392: SSS PM [uid:40][B4728388][AAA ID:51]: Handling Process Config
*Jan 17 14:37:17.392: SSS PM [uid:40][B4728388][AAA ID:51]: Apply config request set to AAA list
Config:   service-type           0   5 [Outbound]
Config:   tunnel-type             0   3 [l2tp]
Config:   Framed-Protocol        0   1 [PPP]
Config:   tunnel-medium-type     0   1 [IPv4]
Config:   tunnel-id              0   "lac-via-radius"
Config:   tunnel-password        0   <hidden>
Config:   tunnel-server-endpoi  0   "172.19.1.1"
Config:   tunnel-client-endpoi  0   "172.19.1.2"
*Jan 17 14:37:17.392: SSS PM [uid:40][B4728388][AAA ID:51]: Sending pppoe@lns.com request to AAA
*Jan 17 14:37:17.392: SSS PM [uid:40][B4728388][AAA ID:51]: SSS PM: Allocating per-user profile
info
*Jan 17 14:37:17.392: SSS PM [uid:40][B4728388][AAA ID:51]: SSS PM: Add per-user profile info to
policy context

```

```

*Jan 17 14:37:17.392: SSS AAA AUTHOR [uid:40][AAA ID:51]: Root SIP PPPoE
*Jan 17 14:37:17.392: SSS AAA AUTHOR [uid:40][AAA ID:51]: Enable PPPoE parsing
*Jan 17 14:37:17.392: SSS AAA AUTHOR [uid:40][AAA ID:51]: Enable PPP parsing
*Jan 17 14:37:17.392: SSS PM [uid:40][B4728388][AAA ID:51]: ACTIVE HANDLE[0]: Snapshot captured
in Active context
*Jan 17 14:37:17.392: SSS PM [uid:40][B4728388][AAA ID:51]: ACTIVE HANDLE[0]: Active context
created
*Jan 17 14:37:17.392: SSS AAA AUTHOR [uid:40][AAA ID:51]: Event <make request>, state changed
from idle to authorizing
*Jan 17 14:37:17.392: SSS AAA AUTHOR [uid:40][AAA ID:51]: Active key set to Auth-User
*Jan 17 14:37:17.392: SSS AAA AUTHOR [uid:40][AAA ID:51]: Authorizing key pppoe@lns.com
*Jan 17 14:37:17.392: SSS AAA AUTHOR [uid:40][AAA ID:51]: Spoofed AAA reply sent for key
pppoe@lns.com
*Jan 17 14:37:17.392: SSS AAA AUTHOR [uid:40][AAA ID:51]: Received an AAA pass
*Jan 17 14:37:17.392: SSS AAA AUTHOR [uid:40][AAA ID:51]: [B4728388]:Reply message not exist
Initial attr  service-type      0   5 [Outbound]
Initial attr  tunnel-type       0   3 [l2tp]
Initial attr  Framed-Protocol   0   1 [PPP]
Initial attr  tunnel-medium-type 0   1 [IPv4]
Initial attr  tunnel-id         0   "lac-via-radius"
Initial attr  tunnel-password   0   <hidden>
Initial attr  tunnel-server-endpoi 0   "172.19.1.1"
Initial attr  tunnel-client-endpoi 0   "172.19.1.2"
*Jan 17 14:37:17.392: SSS PM [uid:40][B4728388][AAA ID:51]:
policy key list doesn't have IPv4 address
*Jan 17 14:37:17.392: SSS PM: PARAMETERIZED-QoS: QoS parameters
*Jan 17 14:37:17.392: SSS PM [uid:40][B4728388][AAA ID:51]: RULE: VRF Parsing routine:
service-type      0   5 [Outbound]
tunnel-type       0   3 [l2tp]
Framed-Protocol   0   1 [PPP]
tunnel-medium-type 0   1 [IPv4]
tunnel-id         0   "lac-via-radius"
tunnel-password   0   <hidden>
tunnel-server-endpoi 0   "172.19.1.1"
tunnel-client-endpoi 0   "172.19.1.2"
*Jan 17 14:37:17.392: SSS AAA AUTHOR [uid:40][AAA ID:51]: Parsed service; VPDN
*Jan 17 14:37:17.393: SSS AAA AUTHOR [uid:40][AAA ID:51]: SIP PPP[A4700F0] parsed as Success
*Jan 17 14:37:17.393: SSS AAA AUTHOR [uid:40][AAA ID:51]: SIP PPP[B009900] parsed as Ignore
*Jan 17 14:37:17.393: SSS AAA AUTHOR [uid:40][AAA ID:51]: SIP PPPoE[A501AC0] parsed as Success
*Jan 17 14:37:17.393: SSS AAA AUTHOR [uid:40][AAA ID:51]: Event <found service>, state changed
from authorizing to complete
*Jan 17 14:37:17.393: SSS AAA AUTHOR [uid:40][AAA ID:51]: Found service info for key
pppoe@lns.com
*Jan 17 14:37:17.393: SSS AAA AUTHOR [uid:40][AAA ID:51]: Active Handle present - FB000007
*Jan 17 14:37:17.393: SSS PM [uid:40][B4728388][AAA ID:51]: Apply config handle [750003F8] now
set to [180003FE]
*Jan 17 14:37:17.393: SSS PM [uid:40][B4728388][AAA ID:51]: ACTIVE HANDLE[0]: Snapshot reverted
from Active context to policy context
*Jan 17 14:37:17.393: SSS AAA AUTHOR [uid:40][AAA ID:51]: Freeing Active Handle; SSS Policy
Context Handle = 1D000028
*Jan 17 14:37:17.393: SSS PM [uid:40][B4728388][AAA ID:51]: ACTIVE HANDLE[2829]: Released active
handle
*Jan 17 14:37:17.393: SSS AAA AUTHOR [uid:40][AAA ID:51]: PM directive AAA:VPDN maps to
PM:Forwarding
*Jan 17 14:37:17.393: SSS PM [uid:40][B4728388][AAA ID:51]: PROFILE: store profile
"pppoe@lns.com"
*Jan 17 14:37:17.393: SSS PM: PROFILE-DB: is profile "pppoe@lns.com" in DB
*Jan 17 14:37:17.393: SSS PM: PROFILE-DB: Computed hash value = 2347614612
*Jan 17 14:37:17.393: SSS PM: PROFILE-DB: No, add new list
*Jan 17 14:37:17.393: SSS PM: PROFILE-DB: create "pppoe@lns.com"
*Jan 17 14:37:17.393: SSS PM: PROFILE-DB: create "pppoe@lns.com"/B48191D8 hdl 4D000400 ref 1
*Jan 17 14:37:17.393: SSS PM [uid:40][B4728388][AAA ID:51]: PROFILE: create B481B924, ref 1
*Jan 17 14:37:17.393: SSS AAA AUTHOR [uid:40][AAA ID:51]: Event <free request>, state changed
from complete to terminal

```

*Jan 17 14:37:17.393: SSS AAA AUTHOR [uid:40][AAA ID:51]: Cancel request
*Jan 17 14:37:17.393: SSS PM [uid:40][B4728388][AAA ID:51]: Handling Author Found Event
*Jan 17 14:37:17.393: SSS PM [uid:40][B4728388][AAA ID:51]: Plumbing proposed by FSP
*Jan 17 14:37:17.393: SSS PM [uid:40][B4728388][AAA ID:51]: Policy reply - Forwarding
*Jan 17 14:37:17.393: SSS PM [uid:40][B4728388][AAA ID:51]: FSP info: B45F7020/VPDN data:
B460E1C8 SVM: 00000000
*Jan 17 14:37:17.393: SSS PM [uid:40][B4728388][AAA ID:51]: Apply of config finished; provide
the found network service
*Jan 17 14:37:17.393: SSS PM [uid:40][B4728388][AAA ID:51]: Network service found; continuing
rule
*Jan 17 14:37:17.393: SSS PM [uid:40][B4728388][AAA ID:51]: RULE[0]: Continue
*Jan 17 14:37:17.393: SSS PM [uid:40][B4728388][AAA ID:51]: RULE[0]: DOMAIN/PPP-4-FORWARD event
session-start/20 authenticate aaa list AAA-4-FORWARD
*Jan 17 14:37:17.393: SSS PM [uid:40][B4728388][AAA ID:51]: RULE[0]: Run action with no altered
name
*Jan 17 14:37:17.393: SSS PM [uid:40][B4728388][AAA ID:51]: State: need-init-keys to initial-req
*Jan 17 14:37:17.393: SSS PM [uid:40][B4728388][AAA ID:51]: RULE[0]: Have key Auth-User
*Jan 17 14:37:17.393: SSS PM [uid:40][B4728388][AAA ID:51]: RULE[1]: Continue
*Jan 17 14:37:17.393: SSS PM [uid:40][B4728388][AAA ID:51]: RULE[1]: DOMAIN/PPP-4-FORWARD event
session-start/20 authenticate aaa list AAA-4-FORWARD
*Jan 17 14:37:17.393: SSS PM [uid:40][B4728388][AAA ID:51]: RULE[1]: Back to parent rule
*Jan 17 14:37:17.393: SSS PM [uid:40][B4728388][AAA ID:51]: RULE[1]: Run next parent action
*Jan 17 14:37:17.393: SSS PM [uid:40][B4728388][AAA ID:51]: RULE[2]: Continue
*Jan 17 14:37:17.393: SSS PM [uid:40][B4728388][AAA ID:51]: RULE[2]: PPPOE/PPP event session-
start/12 service-policy type control DOMAIN
*Jan 17 14:37:17.393: SSS PM [uid:40][B4728388][AAA ID:51]: Client block is NULL in get client
block with handle 1D000028
*Jan 17 14:37:17.393: SSS PM [uid:40][B4728388][AAA ID:51]: RULE[2]: No more actions to run
*Jan 17 14:37:17.393: SSS PM [uid:40][B4728388][AAA ID:51]: RULE[3]: Continue
*Jan 17 14:37:17.393: SSS PM [uid:40][B4728388][AAA ID:51]: RULE[3]: PPPOE/PPP event session-
start/12 service-policy type control DOMAIN
*Jan 17 14:37:17.393: SSS PM [uid:40][B4728388][AAA ID:51]: RULE[3]: Using previously offered
directive Forwarding
*Jan 17 14:37:17.393: SSS PM [uid:40][B4728388][AAA ID:51]: RULE[4]: Continue
*Jan 17 14:37:17.393: SSS PM [uid:40][B4728388][AAA ID:51]: RULE[4]: PPPOE/PPP event session-
start/12 service-policy type control DOMAIN
*Jan 17 14:37:17.393: SSS PM [uid:40][B4728388][AAA ID:51]: Client block is NULL in get client
block with handle 1D000028
*Jan 17 14:37:17.393: SSS PM [uid:40][B4728388][AAA ID:51]: Event <srvf found>, State: initial-
req to wait-for-events
*Jan 17 14:37:17.393: SSS PM [uid:40][B4728388][AAA ID:51]: Handling Service Direction
*Jan 17 14:37:17.393: SSS PM [uid:40][B4728388][AAA ID:51]: Policy reply - Forwarding
*Jan 17 14:37:17.393: SSS PM [uid:40][B4728388][AAA ID:51]: Plumbing proposed by FSP
*Jan 17 14:37:17.393: SSS PM [uid:40][B4728388][AAA ID:51]: Policy reply - Forwarding
*Jan 17 14:37:17.393: SSS PM [uid:40][B4728388][AAA ID:51]: RULE: Looking for a rule for event
session-service-found
*Jan 17 14:37:17.393: SSS PM [uid:40][B4728388][AAA ID:51]: RULE: Intf CloneSrc Vt2: service-
rule any: PPPOE
*Jan 17 14:37:17.393: SSS PM [uid:40][B4728388][AAA ID:51]: RULE: Evaluate "PPPOE" for
session-service-found
*Jan 17 14:37:17.393: SSS PM [uid:40][B4728388][AAA ID:51]: RULE: Not matched "PPPOE/PPP
event session-start"
*Jan 17 14:37:17.393: SSS PM [uid:40][B4728388][AAA ID:51]: RULE: No match for "PPPOE"
*Jan 17 14:37:17.393: SSS PM [uid:40][B4728388][AAA ID:51]: RULE: Intf InputI/f Et0/1.102:
service-rule any: None
*Jan 17 14:37:17.393: SSS PM [uid:40][B4728388][AAA ID:51]: RULE: Glob: service-rule any: None
*Jan 17 14:37:17.393: SSS PM: ANCP not enabled on 'Ethernet0/1.102' - not retrieving default
shaper value
*Jan 17 14:37:17.393: SSS PM: ANCP not enabled on 'Ethernet0/1.102' - not retrieving default
shaper value
*Jan 17 14:37:17.394: ppp40 PPP: No AAA accounting method list
*Jan 17 14:37:17.397: SSS PM: ANCP not enabled on 'Ethernet0/1.102' - not retrieving default
shaper value
*Jan 17 14:37:17.397: SSS PM: ANCP not enabled on 'Ethernet0/1.102' - not retrieving default

shaper value

```
*Jan 17 14:37:17.397: SSS PM [uid:40][B4728388][AAA ID:51]: SM Policy invoke - Apply Config
Success
*Jan 17 14:37:17.397: SSS PM [uid:40][B4728388][AAA ID:51]: [PARAMETERIZED-QoS]: No rabapol
context created yet for handle [1D000028], returning compatible
*Jan 17 14:37:17.397: SSS PM [uid:40][B4728388][AAA ID:51]: Event <got apply config success>,
State: wait-for-events to wait-for-events
*Jan 17 14:37:17.397: SSS PM [uid:40][B4728388][AAA ID:51]: Handling Apply Config; SUCCESS
*Jan 17 14:37:17.397: SSS PM [uid:40][B4728388][AAA ID:51]: session start done
*Jan 17 14:37:17.397: SSS PM [uid:40][B4728388][AAA ID:51]: Removed attribute list just
processed
*Jan 17 14:37:17.397: SSS PM [uid:40][B4728388][AAA ID:51]: no callback for callback north
*Jan 17 14:37:17.397: SSS PM [uid:40][B4728388][AAA ID:51]: Client block is NULL in get client
block with handle 1D000028
*Jan 17 14:37:17.397: SSS PM [uid:40][B4728388][AAA ID:51]: Null client block; Can't update RP
*Jan 17 14:37:17.397: SSS PM [uid:40][B4728388][AAA ID:51]: Client block is NULL in get client
block with handle 1D000028
*Jan 17 14:37:17.397: SSS PM [uid:40][B4728388][AAA ID:51]: No pending events to process
*Jan 17 14:37:17.397: SSS PM [uid:40][B4728388][AAA ID:51]: No pending eventst
*Jan 17 14:37:17.397: ppp40 PPP: Phase is FORWARDED, Session Forwarded
```