

# VPN 3000 RADIUS con la función de vencimiento usando el Servidor de autenticación de Internet de Microsoft

## Contenido

[Introducción](#)

[prerrequisitos](#)

[Requisitos](#)

[Componentes Utilizados](#)

[Diagrama de la red](#)

[Convenciones](#)

[Configure el VPN 3000 RADIUS con la función de vencimiento](#)

[Configurar el concentrador VPN 3000](#)

[Configure el Microsoft IAS](#)

[Verificación](#)

[Troubleshooting](#)

[Información Relacionada](#)

## Introducción

Este documento resalta los pasos para configurar el RADIUS con la función de vencimiento en los concentradores VPN 3000. El Internet Authentication Service de Microsoft (IAS) configurado para MS-CHAP2 (PAP no soportado para esta característica), se utiliza como el servidor de RADIUS en este ejemplo. Con esta característica habilitada, se indica a los usuarios de VPN que cambien una contraseña expirada de Microsoft Windows cuando inician al Cliente Cisco VPN para conectar con el concentrador VPN 3000.

Refiera a la [configuración el Concentradores Cisco VPN de la serie 3000 para soportar la característica de vencimiento de contraseña de NT con el servidor de RADIUS](#) para aprender un escenario más casi igual con la autenticación de RADIUS.

## prerrequisitos

### Requisitos

No hay requisitos específicos para este documento.

### Componentes Utilizados

La información que contiene este documento se basa en las siguientes versiones de software y

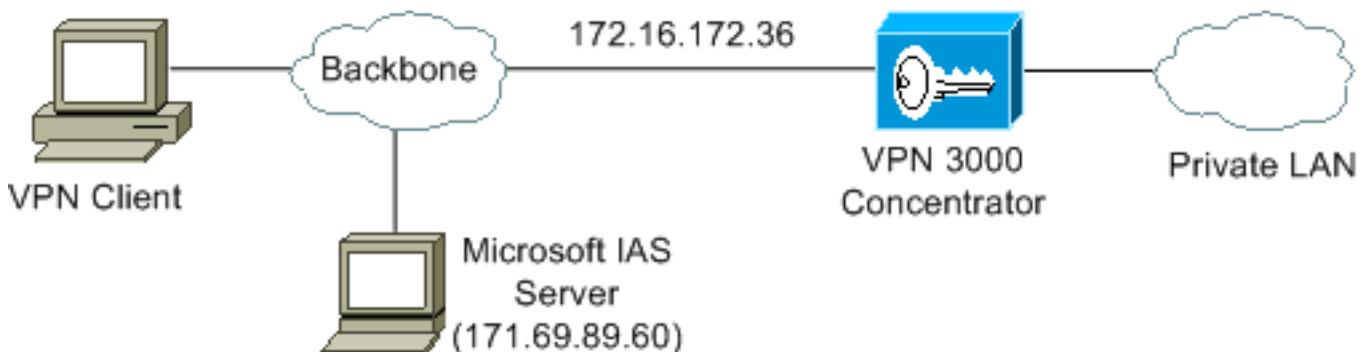
hardware.

- Cisco VPN 3000 Concentrator con el Software Release 3.5.3A de Cisco IOS®
- Cliente VPN de Cisco versión 3.5.1C
- Microsoft IAS instalado en a Windows 2000 Server
- Definen a los usuarios en este documento en el servidor Active Directory del Microsoft Windows 2000

La información que contiene este documento se creó a partir de los dispositivos en un ambiente de laboratorio específico. Todos los dispositivos que se utilizan en este documento se pusieron en funcionamiento con una configuración verificada (predeterminada). Si la red está funcionando, asegúrese de haber comprendido el impacto que puede tener cualquier comando.

## Diagrama de la red

En este documento, se utiliza esta configuración de red:



## Convenciones

Consulte [Convenciones de Consejos Técnicos de Cisco](#) para obtener más información sobre las convenciones sobre documentos.

## Configure el VPN 3000 RADIUS con la función de vencimiento

### Configurar el concentrador VPN 3000

Complete estos pasos para configurar el concentrador VPN 3000.

1. Elija el **Configuration (Configuración)>User Management (Administración del usuario) >Groups (Grupos)** para configurar al grupo VPN.

Configuration | User Management | Groups | Modify windowsuser

Check the **Inherit?** box to set a field that you want to default to the base group value. Uncheck the **Inherit?** box and enter a new value to override base group values.

Identity | General | IPsec | Mode Config | Client FW | HW Client | PPTP/L2TP

Identity Parameters		
Attribute	Value	Description
Group Name	windowsuser	Enter a unique name for the group.
Password	XXXXXXXXXXXXXXXXXX	Enter the password for the group.
Verify	XXXXXXXXXXXXXXXXXX	Verify the group's password.
Type	Internal	<i>External</i> groups are configured on an external authentication server (e.g. RADIUS). <i>Internal</i> groups are configured on the VPN 3000 Concentrator's Internal Database.

Apply Cancel

2. Especifique el método Xauth denotado por la “autenticación” como “RADIUS con el vencimiento” bajo lengüeta del IPsec.

Identity | General | IPsec | Mode Config | Client FW | HW Client | PPTP/L2TP

IPsec Parameters			
Attribute	Value	Inherit?	Description
IPsec SA	ESP-3DES-MD5	<input checked="" type="checkbox"/>	Select the group's IPsec Security Association.
IKE Peer Identity Validation	If supported by certificate	<input checked="" type="checkbox"/>	Select whether or not to validate the identity of the peer using the peer's certificate.
IKE Keepalives	<input checked="" type="checkbox"/>	<input checked="" type="checkbox"/>	Check to enable the use of IKE keepalives for members of this group.
Tunnel Type	Remote Access	<input checked="" type="checkbox"/>	Select the type of tunnel for this group. Update the Remote Access parameters below as needed.
Remote Access Parameters			
Group Lock	<input type="checkbox"/>	<input checked="" type="checkbox"/>	Lock users into this group.
Authentication	RADIUS with Expiry	<input type="checkbox"/>	Select the authentication method for members of this group. This parameter does not apply to <b>Individual User Authentication</b> .
IPComp	None	<input checked="" type="checkbox"/>	Select the method of IP Compression for members of this group.
Reauthentication on Rekey	<input type="checkbox"/>	<input checked="" type="checkbox"/>	Check to reauthenticate the user on an IKE (Phase-1) rekey.
Mode Configuration	<input checked="" type="checkbox"/>	<input checked="" type="checkbox"/>	Check to initiate the exchange of Mode Configuration parameters with the client. This must be checked if version 2.5 (or earlier) of the the Altiga/Cisco client are being used by members of this group.

Apply Cancel

3. Elija el Configuration (Configuración) > Sytem (Sistema) > Servers (Servidores) > Authentication (Autenticación) para definir al servidor de RADIUS.

Configuration | System | Servers | Authentication | Modify

Change a configured user authentication server.

**Server Type**  Selecting *Internal Server* will let you add users to the internal user database.

**Authentication Server**  Enter IP address or hostname.

**Server Port**  Enter 0 for default port (1645).

**Timeout**  Enter the timeout for this server (seconds).

**Retries**  Enter the number of retries for this server.

**Server Secret**  Enter the RADIUS server secret.

**Verify**  Re-enter the secret.

4. Defina el método de asignación de la dirección IP. Este ejemplo utiliza un pool de la dirección IP definido localmente en el concentrador VPN 3000.

Configuration | System | Address Management | Assignment

This section presents Address Assignment options. Each of the following methods are tried, in order, until an address is found.

**Use Client Address**  Check to use the IP address supplied by the client. This can be overridden by user/group configuration.

**Use Address from Authentication Server**  Check to use an IP address retrieved from an authentication server for the client.

**Use DHCP**  Check to use DHCP to obtain an IP address for the client.

**Use Address Pools**  Check to use internal address pool configuration to obtain an IP address for the client.

5. Defina un pool de la dirección IP.

Configuration | System | Address Management | Pools Save

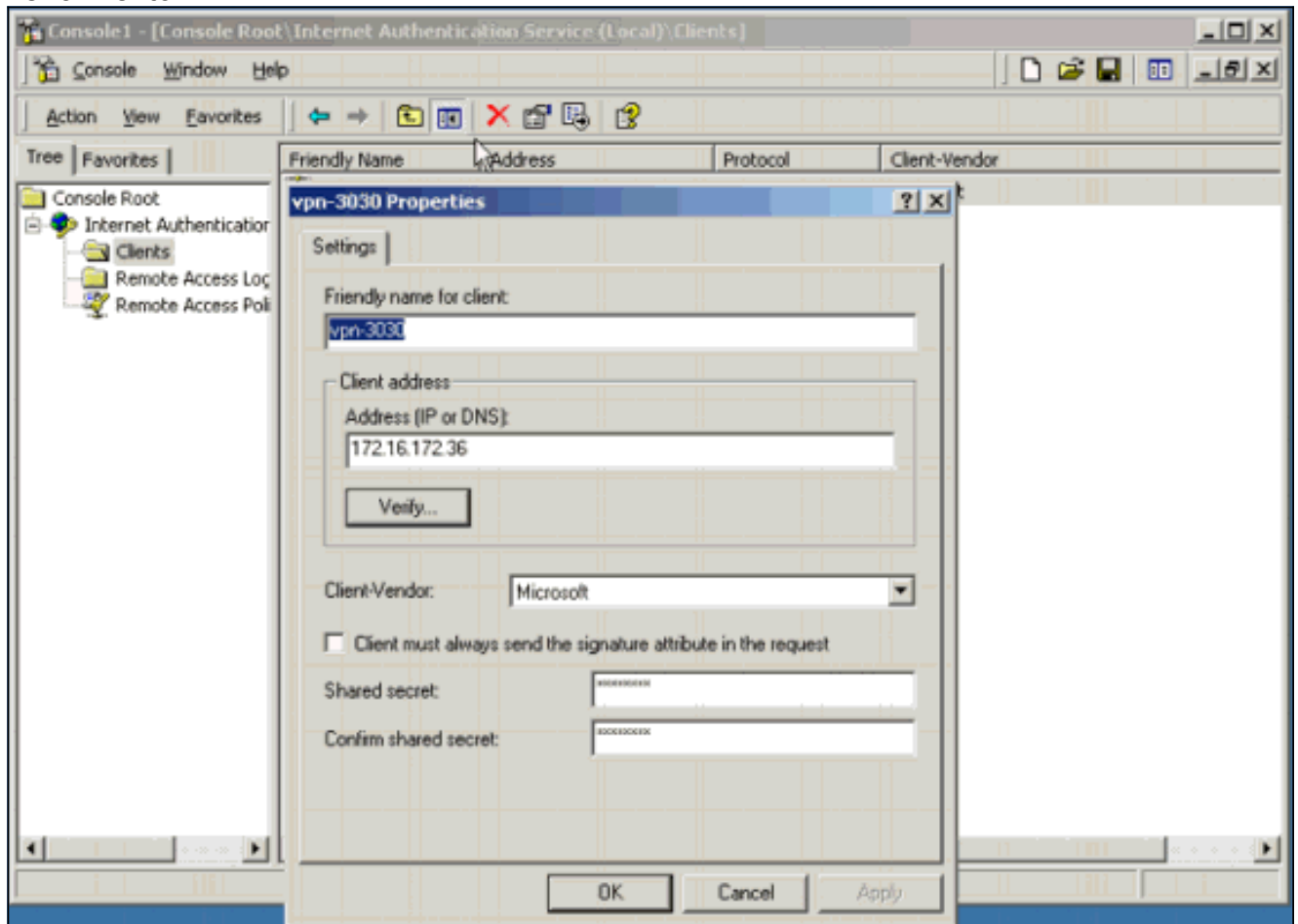
This section lets you configure IP Address Pools.

Click the **Add** button to add a pool entry, or select a pool and click **Modify**, **Delete** or **Move**.

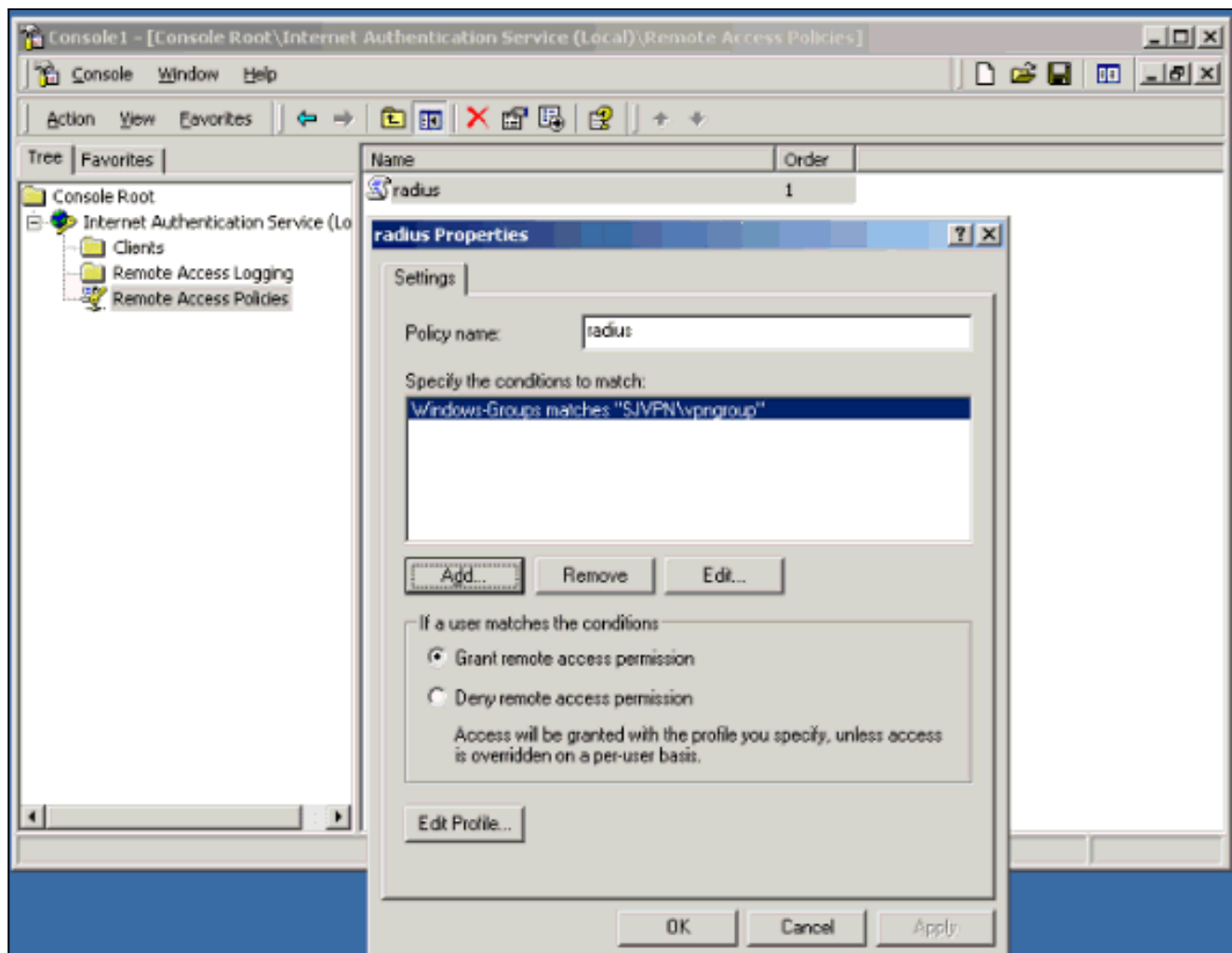
IP Pool Entry	Actions
10.10.10.1 - 10.10.10.254	<input type="button" value="Add"/> <input type="button" value="Modify"/> <input type="button" value="Delete"/> <input type="button" value="Move Up"/> <input type="button" value="Move Down"/>

Complete estos pasos para configurar el Microsoft IAS.

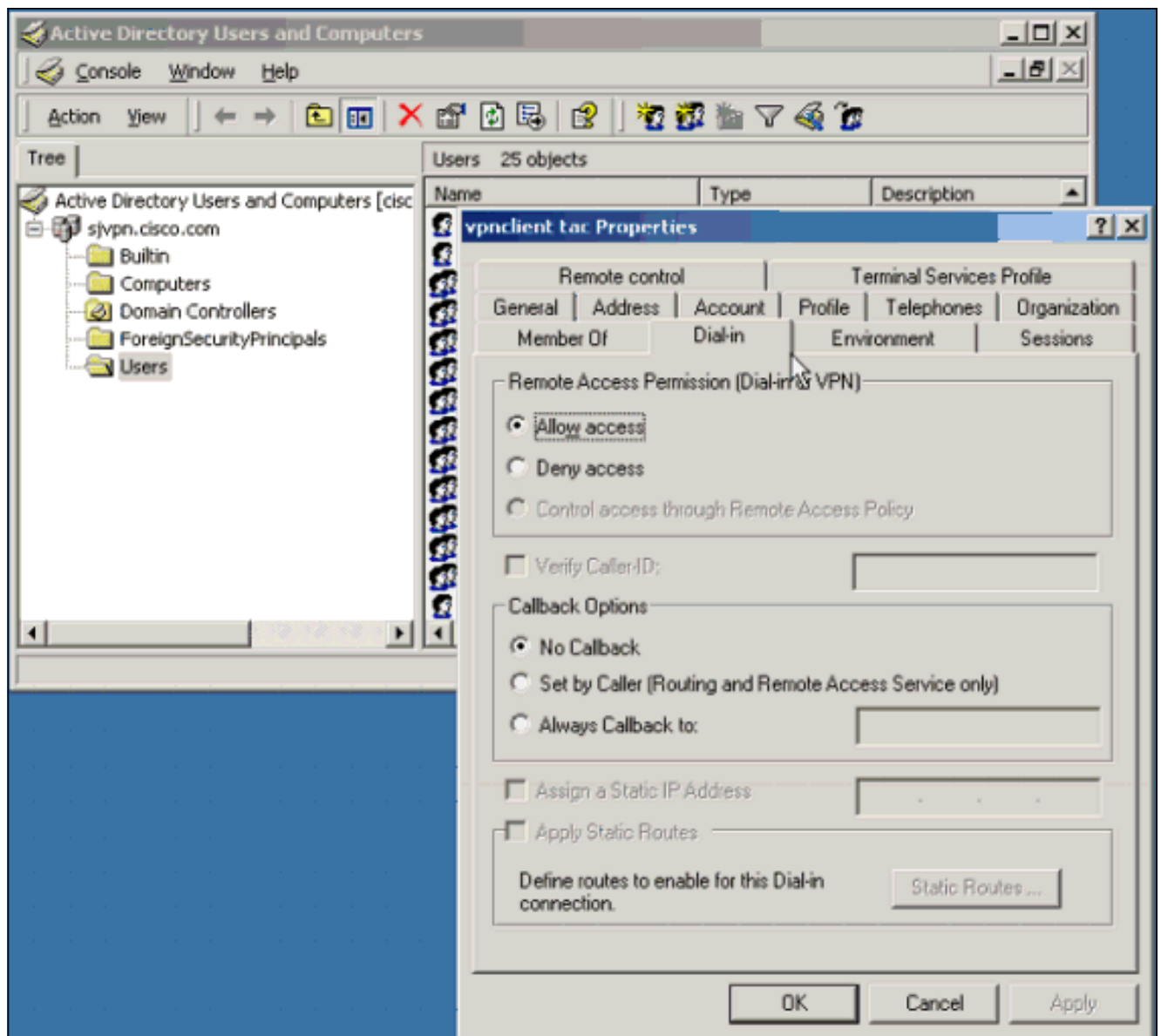
1. Defina el concentrador VPN 3000 como cliente. **Nota:** Microsoft se elige mientras que Client Vendedor para conseguir el soporte para el Microsoft Vendor-Specific Attributes (VSA) requerido por el RADIUS con la función de vencimiento.



2. Defina una política de acceso remoto. Bajo esta directiva, especifican al grupo de Windows que contiene a todos los usuarios de VPN.

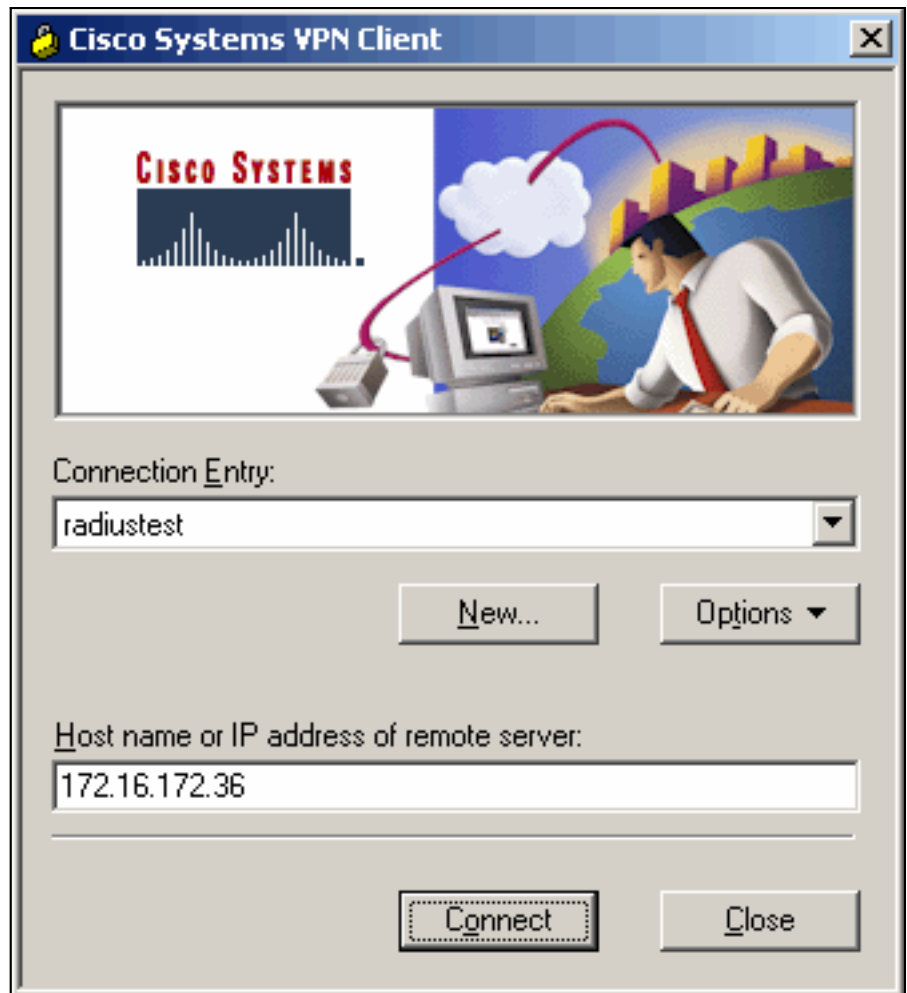


**Nota:** Los usuarios de Windows deben marcar **permiten el acceso** bajo sección del Permiso de acceso remoto (dial-in o VPN) en el perfil del usuario como se muestra abajo.

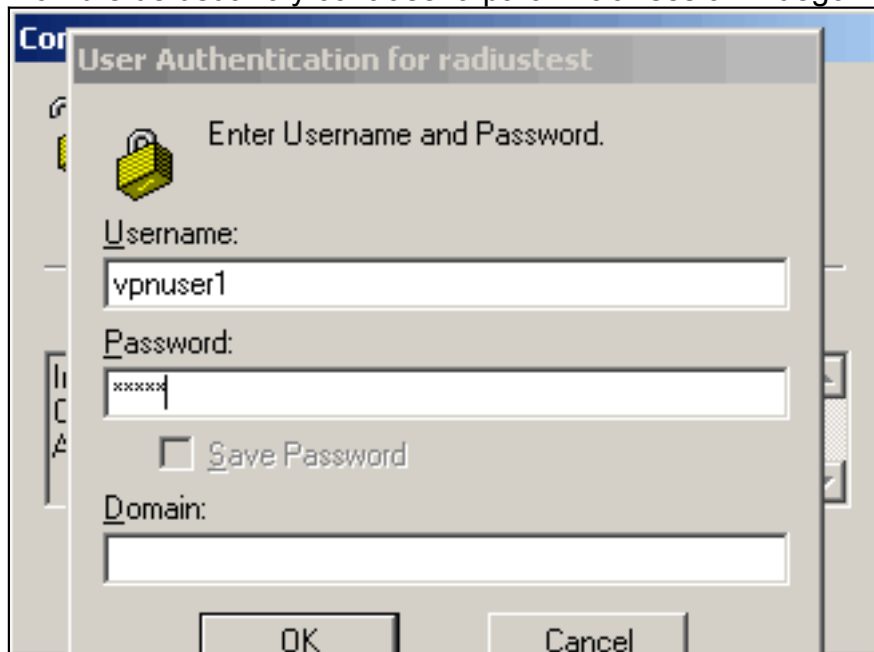


## Verificación

Estos ejemplos demuestran cómo el RADIUS con la función de vencimiento trabaja cuando expira la contraseña de Windows. El usuario de VPN es informado que la contraseña ha expirado y ha indicado para ingresar un nuevo.



1. Inicie al Cliente Cisco VPN.
2. Teclee su nombre de usuario y contraseña para iniciar sesión. Luego haga clic en OK



(Aceptar).

3. Cuando expira la contraseña de Windows, a le indicarán que cambie la contraseña. Teclee una nueva contraseña. Teclee otra vez para confirmarla, y haga clic la





AUTORIZACIÓN.

## Troubleshooting

Esta sección muestra el registro de acontecimientos capturado en el concentrador VPN 3000 durante una negociación de túnel. Refiera a las porciones intrépidas para ver cómo Microsoft VSA se pasa entre IAS y el concentrador VPN 3000 para informar al usuario de VPN que ha expirado la contraseña, y para llevar la contraseña de las nuevas ventanas detrás del usuario de VPN la base de datos de usuario de Windows.

```
1 08/06/2002 16:45:40.920 SEV=8 AUTHDBG/1 RPT=263
AUTH_Open() returns 102

2 08/06/2002 16:45:40.920 SEV=7 AUTH/12 RPT=264
Authentication session opened: handle = 102

3 08/06/2002 16:45:40.920 SEV=8 AUTHDBG/3 RPT=302
AUTH_PutAttrTable(102, 742784)

4 08/06/2002 16:45:40.920 SEV=8 AUTHDBG/6 RPT=183
AUTH_GroupAuthenticate(102, 9aa2e24, 4983ac)

5 08/06/2002 16:45:40.920 SEV=8 AUTHDBG/59 RPT=302
AUTH_BindServer(9a03fcc, 0, 0)

6 08/06/2002 16:45:40.920 SEV=9 AUTHDBG/69 RPT=302
Auth Server 18cdfa4 has been bound to ACB 9a03fcc, sessions = 1

7 08/06/2002 16:45:40.920 SEV=8 AUTHDBG/65 RPT=302
AUTH_CreateTimer(9a03fcc, 0, 0)

8 08/06/2002 16:45:40.920 SEV=9 AUTHDBG/72 RPT=302
Reply timer created: handle = 5A0C001B

9 08/06/2002 16:45:40.920 SEV=8 AUTHDBG/61 RPT=302
AUTH_BuildMsg(9a03fcc, 0, 0)
```

10 08/06/2002 16:45:40.920 SEV=8 AUTHDBG/64 RPT=302  
AUTH\_StartTimer(9a03fcc, 0, 0)

11 08/06/2002 16:45:40.920 SEV=9 AUTHDBG/73 RPT=302  
Reply timer started: handle = 5A0C001B, timestamp = 355273988, timeout = 30000

12 08/06/2002 16:45:40.920 SEV=8 AUTHDBG/62 RPT=302  
AUTH\_SndRequest(9a03fcc, 0, 0)

13 08/06/2002 16:45:40.920 SEV=8 AUTHDBG/50 RPT=477  
IntDB\_Decode(62fd1a8, 146)

14 08/06/2002 16:45:40.920 SEV=10 AUTHDECODE/12 RPT=1  
IntDB: Type = 1 (0x01) User-Name

15 08/06/2002 16:45:40.920 SEV=10 AUTHDECODE/13 RPT=1  
IntDB: Length = 11 (0x0B)

16 08/06/2002 16:45:40.920 SEV=10 AUTHDECODE/14 RPT=1  
IntDB: Value (String) =

17 08/06/2002 16:45:40.920 SEV=10 AUTHDECODE/0 RPT=1  
0000: 77696E64 6F777375 736572 windowsuser

18 08/06/2002 16:45:40.920 SEV=10 AUTHDECODE/12 RPT=2  
IntDB: Type = 5 (0x05) NAS-Port

19 08/06/2002 16:45:40.920 SEV=10 AUTHDECODE/13 RPT=2  
IntDB: Length = 4 (0x04)

20 08/06/2002 16:45:40.920 SEV=10 AUTHDECODE/15 RPT=1  
IntDB: Value (Integer) = 0 (0x0000)

21 08/06/2002 16:45:40.920 SEV=10 AUTHDECODE/12 RPT=3  
IntDB: Type = 6 (0x06) Service-Type

22 08/06/2002 16:45:40.920 SEV=10 AUTHDECODE/13 RPT=3  
IntDB: Length = 4 (0x04)

23 08/06/2002 16:45:40.920 SEV=10 AUTHDECODE/15 RPT=2  
IntDB: Value (Integer) = 2 (0x0002)

24 08/06/2002 16:45:40.920 SEV=10 AUTHDECODE/12 RPT=4  
IntDB: Type = 7 (0x07) Framed-Protocol

25 08/06/2002 16:45:40.920 SEV=10 AUTHDECODE/13 RPT=4  
IntDB: Length = 4 (0x04)

26 08/06/2002 16:45:40.920 SEV=10 AUTHDECODE/15 RPT=3  
IntDB: Value (Integer) = 1 (0x0001)

27 08/06/2002 16:45:40.920 SEV=10 AUTHDECODE/12 RPT=5  
IntDB: Type = 66 (0x42) Tunnel-Client-Endpoint

28 08/06/2002 16:45:40.920 SEV=10 AUTHDECODE/13 RPT=5  
IntDB: Length = 12 (0x0C)

29 08/06/2002 16:45:40.920 SEV=10 AUTHDECODE/14 RPT=2  
IntDB: Value (String) =

30 08/06/2002 16:45:40.920 SEV=10 AUTHDECODE/0 RPT=2  
0000: 3137312E 36392E38 392E3930 171.69.89.90

31 08/06/2002 16:45:40.920 SEV=10 AUTHDECODE/12 RPT=6  
IntDB: Type = 4118 (0x1016) Authentication-Server-Type

32 08/06/2002 16:45:40.920 SEV=10 AUTHDECODE/13 RPT=6  
IntDB: Length = 4 (0x04)

33 08/06/2002 16:45:40.920 SEV=10 AUTHDECODE/15 RPT=4  
IntDB: Value (Integer) = 5 (0x0005)

34 08/06/2002 16:45:40.920 SEV=8 AUTHDBG/47 RPT=477  
IntDB\_Xmt(9a03fcc)

35 08/06/2002 16:45:40.920 SEV=9 AUTHDBG/71 RPT=302  
xmit\_cnt = 1

36 08/06/2002 16:45:40.920 SEV=8 AUTHDBG/47 RPT=478  
IntDB\_Xmt(9a03fcc)

37 08/06/2002 16:45:41.020 SEV=8 AUTHDBG/49 RPT=239  
IntDB\_Match(9a03fcc, 62f1c4c)

38 08/06/2002 16:45:41.020 SEV=8 AUTHDBG/63 RPT=302  
AUTH\_RcvReply(9a03fcc, 0, 0)

39 08/06/2002 16:45:41.020 SEV=8 AUTHDBG/50 RPT=478  
IntDB\_Decode(62f1c4c, 170)

40 08/06/2002 16:45:41.020 SEV=10 AUTHDECODE/12 RPT=7  
IntDB: Type = 1 (0x01) User-Name

41 08/06/2002 16:45:41.020 SEV=10 AUTHDECODE/13 RPT=7  
IntDB: Length = 11 (0x0B)

42 08/06/2002 16:45:41.020 SEV=10 AUTHDECODE/14 RPT=3  
IntDB: Value (String) =

43 08/06/2002 16:45:41.020 SEV=10 AUTHDECODE/0 RPT=3  
0000: 77696E64 6F777375 736572 windowsuser

44 08/06/2002 16:45:41.020 SEV=10 AUTHDECODE/12 RPT=8  
IntDB: Type = 4109 (0x100D) IPSec-Authentication

45 08/06/2002 16:45:41.020 SEV=10 AUTHDECODE/13 RPT=8  
IntDB: Length = 4 (0x04)

46 08/06/2002 16:45:41.020 SEV=10 AUTHDECODE/15 RPT=5  
IntDB: Value (Integer) = 6 (0x0006)

47 08/06/2002 16:45:41.020 SEV=10 AUTHDECODE/12 RPT=9  
IntDB: Type = 4123 (0x101B) Split-Tunnel-Inclusion-List

48 08/06/2002 16:45:41.020 SEV=10 AUTHDECODE/13 RPT=9

IntDB: Length = 4 (0x04)

49 08/06/2002 16:45:41.020 SEV=10 AUTHDECODE/14 RPT=4  
IntDB: Value (String) =

50 08/06/2002 16:45:41.020 SEV=10 AUTHDECODE/0 RPT=4  
0000: 74657374 test

51 08/06/2002 16:45:41.020 SEV=10 AUTHDECODE/12 RPT=10  
IntDB: Type = 4151 (0x1037) Split-Tunneling-Policy

52 08/06/2002 16:45:41.020 SEV=10 AUTHDECODE/13 RPT=10  
IntDB: Length = 4 (0x04)

53 08/06/2002 16:45:41.020 SEV=10 AUTHDECODE/15 RPT=6  
IntDB: Value (Integer) = 1 (0x0001)

54 08/06/2002 16:45:41.020 SEV=8 AUTHDBG/48 RPT=239  
IntDB\_Rcv(9a03fcc)

55 08/06/2002 16:45:41.020 SEV=8 AUTHDBG/66 RPT=302  
AUTH\_DeleteTimer(9a03fcc, 0, 0)

56 08/06/2002 16:45:41.020 SEV=9 AUTHDBG/74 RPT=302  
Reply timer stopped: handle = 5A0C001B, timestamp = 355273998

57 08/06/2002 16:45:41.020 SEV=8 AUTHDBG/58 RPT=302  
AUTH\_Callback(9a03fcc, 0, 0)

58 08/06/2002 16:45:41.020 SEV=6 AUTH/41 RPT=218 171.69.89.90  
Authentication successful: handle = 102, server = Internal,  
group = windowsuser

59 08/06/2002 16:45:41.020 SEV=8 AUTHDBG/4 RPT=288  
AUTH\_GetAttrTable(102, 742a30)

60 08/06/2002 16:45:41.020 SEV=8 AUTHDBG/2 RPT=263  
AUTH\_Close(102)

61 08/06/2002 16:45:41.020 SEV=8 AUTHDBG/60 RPT=302  
AUTH\_UnbindServer(9a03fcc, 0, 0)

62 08/06/2002 16:45:41.020 SEV=9 AUTHDBG/70 RPT=302  
Auth Server 18cdfa4 has been unbound from ACB 9a03fcc, sessions = 0

63 08/06/2002 16:45:41.020 SEV=8 AUTHDBG/10 RPT=263  
AUTH\_Int\_FreeAuthCB(9a03fcc)

64 08/06/2002 16:45:41.020 SEV=7 AUTH/13 RPT=264  
Authentication session closed: handle = 102

65 08/06/2002 16:45:46.610 SEV=8 AUTHDBG/1 RPT=264  
AUTH\_Open() returns 103

66 08/06/2002 16:45:46.610 SEV=7 AUTH/12 RPT=265  
Authentication session opened: handle = 103

67 08/06/2002 16:45:46.610 SEV=8 AUTHDBG/3 RPT=303  
AUTH\_PutAttrTable(103, 7429b8)

68 08/06/2002 16:45:46.610 SEV=8 AUTHDBG/5 RPT=56  
AUTH\_Authenticate(103, 500a278, 4cad38)

69 08/06/2002 16:45:46.610 SEV=8 AUTHDBG/59 RPT=303

AUTH\_BindServer(9aa46fc, 0, 0)

70 08/06/2002 16:45:46.610 SEV=9 AUTHDBG/69 RPT=303  
Auth Server 18cela4 has been bound to ACB 9aa46fc, sessions = 1

71 08/06/2002 16:45:46.610 SEV=8 AUTHDBG/65 RPT=303  
AUTH\_CreateTimer(9aa46fc, 0, 0)

72 08/06/2002 16:45:46.610 SEV=9 AUTHDBG/72 RPT=303  
Reply timer created: handle = 5A0E0016

73 08/06/2002 16:45:46.610 SEV=8 AUTHDBG/61 RPT=303  
AUTH\_BuildMsg(9aa46fc, 0, 0)

74 08/06/2002 16:45:46.610 SEV=8 AUTHDBG/27 RPT=64  
Radius\_Build(9aa46fc)

75 08/06/2002 16:45:46.610 SEV=8 AUTHDBG/64 RPT=303  
AUTH\_StartTimer(9aa46fc, 0, 0)

76 08/06/2002 16:45:46.610 SEV=9 AUTHDBG/73 RPT=303  
Reply timer started: handle = 5A0E0016, timestamp = 355274557, timeout = 4000

**77 08/06/2002 16:45:46.610 SEV=8 AUTHDBG/62 RPT=303 AUTH\_SndRequest(9aa46fc, 0, 0)** 78 08/06/2002  
16:45:46.610 SEV=8 AUTHDBG/31 RPT=127 Radius\_Decode(62f1c4c, 156) 79 08/06/2002 16:45:46.610  
SEV=13 AUTHDECODE/0 RPT=5 0000: 0122009C 7F70A83B E37B9B27 31668A07 .".p.i.{'lf.. 0010:  
1089C0A4 010A7670 6E757365 72310506 .....vpuser1.. 0020: 0000041C 06060000 00020706 00000001  
..... 0030: 420E3137 312E3639 2E38392E 39301A18 B.171.69.89.90.. 0040: 00000137  
0B12BE14 D10DA7ED 8A00FD25 ...7.....% 0050: 47B90956 3B191A3A 00000137 19340000  
G..V;...7.4.. 0060: 62B6A996 DD4962AE 05FA5AAF FDDA96A9 b....Ib...Z..... 0070: 00000000  
00000000 3CA2008E A03CABCF .....<....<.. 0080: 73FB28E0 D1560A01 D96AAE3B BFB6DD42  
s(..V...j;...B 0090: 0406AC10 AC243D06 00000005 .....\$=..... 89 08/06/2002 16:45:46.610 SEV=10  
AUTHDECODE/1 RPT=1 Radius: Code = 1 (0x01) 90 08/06/2002 16:45:46.610 SEV=10 AUTHDECODE/2 RPT=1  
Radius: Identifier = 34 (0x22) 91 08/06/2002 16:45:46.610 SEV=10 AUTHDECODE/3 RPT=1 Radius:  
Length = 156 (0x009C) 92 08/06/2002 16:45:46.610 SEV=10 AUTHDECODE/4 RPT=1 Radius: Vector: 93  
08/06/2002 16:45:46.610 SEV=10 AUTHDECODE/0 RPT=6 0000: 7F70A83B E37B9B27 31668A07 1089C0A4  
.p.i.{'lf..... 94 08/06/2002 16:45:46.610 SEV=10 AUTHDECODE/5 RPT=1 Radius: Type = 1 (0x01)  
User-Name 95 08/06/2002 16:45:46.610 SEV=10 AUTHDECODE/6 RPT=1 Radius: Length = 10 (0x0A) 96  
08/06/2002 16:45:46.610 SEV=10 AUTHDECODE/7 RPT=1 Radius: Value (String) = 97 08/06/2002  
16:45:46.610 SEV=10 AUTHDECODE/0 RPT=7 0000: 76706E75 73657231 vpuser1 98 08/06/2002  
16:45:46.610 SEV=10 AUTHDECODE/5 RPT=2> Radius: Type = 5 (0x05) NAS-Port 99 08/06/2002  
16:45:46.610 SEV=10 AUTHDECODE/6 RPT=2 Radius: Length = 6 (0x06) 100 08/06/2002 16:45:46.610  
SEV=10 AUTHDECODE/11 RPT=1 Radius: Value (Hex) = 0x41C 101 08/06/2002 16:45:46.610 SEV=10  
AUTHDECODE/5 RPT=3 Radius: Type = 6 (0x06) Service-Type 102 08/06/2002 16:45:46.610 SEV=10  
AUTHDECODE/6 RPT=3 Radius: Length = 6 (0x06) 103 08/06/2002 16:45:46.610 SEV=10 AUTHDECODE/11  
RPT=2 Radius: Value (Hex) = 0x2 104 08/06/2002 16:45:46.610 SEV=10 AUTHDECODE/5 RPT=4 Radius:  
Type = 7 (0x07) Framed-Protocol 105 08/06/2002 16:45:46.610 SEV=10 AUTHDECODE/6 RPT=4 Radius:  
Length = 6 (0x06) 106 08/06/2002 16:45:46.610 SEV=10 AUTHDECODE/11 RPT=3 Radius: Value (Hex) =  
0x1 107 08/06/2002 16:45:46.610 SEV=10 AUTHDECODE/5 RPT=5 Radius: Type = 66 (0x42) Tunnel-  
Client-Endpoint 108 08/06/2002 16:45:46.610 SEV=10 AUTHDECODE/6 RPT=5 Radius: Length = 14 (0x0E)  
109 08/06/2002 16:45:46.610 SEV=10 AUTHDECODE/7 RPT=2 Radius: Value (String) = 110 08/06/2002  
16:45:46.610 SEV=10 AUTHDECODE/0 RPT=8 0000: 3137312E 36392E38 392E3930 171.69.89.90 111  
08/06/2002 16:45:46.610 SEV=10 AUTHDECODE/5 RPT=6 Radius: Type = 26 (0x1A) Vendor-Specific 112  
08/06/2002 16:45:46.610 SEV=10 AUTHDECODE/6 RPT=6 Radius: Length = 24 (0x18) 113 08/06/2002  
16:45:46.610 SEV=10 AUTHDECODE/10 RPT=1 Radius: Vendor ID = 311 (0x00000137) 114 08/06/2002  
16:45:46.610 SEV=10 AUTHDECODE/5 RPT=7 Radius: Type = 11 (0x0B) MS-CHAP-Challenge 115 08/06/2002  
16:45:46.610 SEV=10 AUTHDECODE/6 RPT=7 Radius: Length = 18 (0x12) 116 08/06/2002 16:45:46.610  
SEV=10 AUTHDECODE/7 RPT=3 Radius: Value (String) = 117 08/06/2002 16:45:46.610 SEV=10  
AUTHDECODE/0 RPT=9 0000: BE14D10D A7ED8A00 FD2547B9 09563B19 .....%G..V;. 118 08/06/2002  
16:45:46.610 SEV=10 AUTHDECODE/5 RPT=8 Radius: Type = 26 (0x1A) Vendor-Specific 119 08/06/2002  
16:45:46.610 SEV=10 AUTHDECODE/6 RPT=8 Radius: Length = 58 (0x3A) 120 08/06/2002 16:45:46.610  
SEV=10 AUTHDECODE/10 RPT=2 Radius: Vendor ID = 311 (0x00000137) 121 08/06/2002 16:45:46.610  
SEV=10 AUTHDECODE/5 RPT=9 Radius: Type = 25 (0x19) MS-CHAP2-Response 122 08/06/2002 16:45:46.610  
SEV=10 AUTHDECODE/6 RPT=9 Radius: Length = 52 (0x34) 123 08/06/2002 16:45:46.610 SEV=10

AUTHDECODE/7 RPT=4 Radius: Value (String) = 124 08/06/2002 16:45:46.610 SEV=10 AUTHDECODE/0  
RPT=10 0000: 000062B6 A996DD49 62AE05FA 5AAFFDDA ..b....Ib...Z... 0010: 96A90000 00000000  
00003CA2 008EA03C .....<....< 0020: ABCF73FB 28E0D156 0A01D96A AE3BBFB6 ..s(..V...j;..  
0030: DD42 .B 128 08/06/2002 16:45:46.620 SEV=10 AUTHDECODE/5 RPT=10 Radius: Type = 4 (0x04)  
NAS-IP-Address 129 08/06/2002 16:45:46.620 SEV=10 AUTHDECODE/6 RPT=10 Radius: Length = 6 (0x06)  
130 08/06/2002 16:45:46.620 SEV=10 AUTHDECODE/9 RPT=1 Radius: Value (IP Address) = 172.16.172.36  
(0xAC10AC24) 131 08/06/2002 16:45:46.620 SEV=10 AUTHDECODE/5 RPT=11 Radius: Type = 61 (0x3D)  
NAS-Port-Type 132 08/06/2002 16:45:46.620 SEV=10 AUTHDECODE/6 RPT=11 Radius: Length = 6 (0x06)  
133 08/06/2002 16:45:46.620 SEV=10 AUTHDECODE/11 RPT=4 Radius: Value (Hex) = 0x5 134 08/06/2002  
16:45:46.620 SEV=8 AUTHDBG/28 RPT=64 Radius\_Xmt(9aa46fc) 135 08/06/2002 16:45:46.620 SEV=9  
AUTHDBG/71 RPT=303 xmit\_cnt = 1 136 08/06/2002 16:45:46.710 SEV=8 AUTHDBG/30 RPT=64  
Radius\_Match(9aa46fc, 5004a10), id = 0x22, rcvd = 0x22 **137 08/06/2002 16:45:46.710 SEV=8**  
**AUTHDBG/63 RPT=303 AUTH\_RcvReply(9aa46fc, 0, 0)** 138 08/06/2002 16:45:46.710 SEV=8 AUTHDBG/31  
RPT=128 Radius\_Decode(5004a10, 42) 139 08/06/2002 16:45:46.710 SEV=13 AUTHDECODE/0 RPT=11 0000:  
0322002A CCDF6607 AB8B6D51 9B17CFE1 ."\*.f...mQ.... 0010: 6A11AE2E 1A160000 01370210 00453D36  
j.....7...E=6 0020: 34382052 3D302056 3D33 48 R=0 V=3 142 08/06/2002 16:45:46.710 SEV=10  
AUTHDECODE/1 RPT=2 Radius: Code = 3 (0x03) 143 08/06/2002 16:45:46.710 SEV=10 AUTHDECODE/2 RPT=2  
Radius: Identifier = 34 (0x22) 144 08/06/2002 16:45:46.710 SEV=10 AUTHDECODE/3 RPT=2 Radius:  
Length = 42 (0x002A) 145 08/06/2002 16:45:46.710 SEV=10 AUTHDECODE/4 RPT=2 Radius: Vector: 146  
08/06/2002 16:45:46.710 SEV=10 AUTHDECODE/0 RPT=12 0000: CCDF6607 AB8B6D51 9B17CFE1 6A11AE2E  
..f...mQ....j... **147 08/06/2002 16:45:46.710 SEV=10 AUTHDECODE/5 RPT=12 Radius: Type = 26 (0x1A)**  
**Vendor-Specific** 148 08/06/2002 16:45:46.710 SEV=10 AUTHDECODE/6 RPT=12 Radius: Length = 22  
(0x16) 149 08/06/2002 16:45:46.710 SEV=10 AUTHDECODE/10 RPT=3 Radius: Vendor ID = 311  
(0x00000137) 150 08/06/2002 16:45:46.710 SEV=10 AUTHDECODE/5 RPT=13 Radius: Type = 2 (0x02) **MS-**  
**CHAP-Error** 151 08/06/2002 16:45:46.710 SEV=10 AUTHDECODE/6 RPT=13 Radius: Length = 16 (0x10) 152  
08/06/2002 16:45:46.710 SEV=10 AUTHDECODE/7 RPT=5 Radius: Value (String) = 153 08/06/2002  
16:45:46.710 SEV=10 AUTHDECODE/0 RPT=13 0000: 00453D36 34382052 3D302056 3D33 .E=648 R=0 V=3 154  
08/06/2002 16:45:46.710 SEV=8 AUTHDBG/29 RPT=64 Radius\_Rcv(9aa46fc) 155 08/06/2002 16:45:46.710  
SEV=8 AUTHDBG/66 RPT=303 AUTH\_DeleteTimer(9aa46fc, 0, 0) 156 08/06/2002 16:45:46.710 SEV=9  
AUTHDBG/74 RPT=303 Reply timer stopped: handle = 5A0E0016, timestamp = 355274567 157 08/06/2002  
16:45:46.710 SEV=8 AUTHDBG/58 RPT=303 AUTH\_Callback(9aa46fc, 0, 0) **158 08/06/2002 16:45:46.710**  
**SEV=3 AUTH/5 RPT=42 171.69.89.90 Authentication rejected: Reason = Password expired handle =**  
**103, server = 171.69.89.60, user = vpnuser1, domain = <not specified>** 160 08/06/2002  
16:45:46.710 SEV=8 AUTHDBG/4 RPT=289 AUTH\_GetAttrTable(103, 743aa8) 161 08/06/2002 16:45:46.710  
SEV=8 AUTHDBG/4 RPT=290 AUTH\_GetAttrTable(103, 743ad8) 162 08/06/2002 16:45:46.710 SEV=8  
AUTHDBG/60 RPT=303 AUTH\_UnbindServer(9aa46fc, 0, 0) 163 08/06/2002 16:45:46.710 SEV=9 AUTHDBG/70  
RPT=303 Auth Server 18cela4 has been unbound from ACB 9aa46fc, sessions = 0 164 08/06/2002  
16:45:50.480 SEV=8 AUTHDBG/3 RPT=304 AUTH\_PutAttrTable(103, 742898) 165 08/06/2002 16:45:50.480  
SEV=8 AUTHDBG/5 RPT=57 AUTH\_Authenticate(103, 500a278, 4cad38) 166 08/06/2002 16:45:50.480 SEV=8  
AUTHDBG/59 RPT=304 AUTH\_BindServer(9aa46fc, 0, 0) 167 08/06/2002 16:45:50.480 SEV=9 AUTHDBG/69  
RPT=304 Auth Server 18cela4 has been bound to ACB 9aa46fc, sessions = 1 168 08/06/2002  
16:45:50.480 SEV=8 AUTHDBG/65 RPT=304 AUTH\_CreateTimer(9aa46fc, 0, 0) 169 08/06/2002  
16:45:50.480 SEV=9 AUTHDBG/72 RPT=304 Reply timer created: handle = 5A100016 170 08/06/2002  
16:45:50.480 SEV=8 AUTHDBG/61 RPT=304 AUTH\_BuildMsg(9aa46fc, 0, 0) 171 08/06/2002 16:45:50.480  
SEV=8 AUTHDBG/27 RPT=65 Radius\_Build(9aa46fc) 172 08/06/2002 16:45:50.480 SEV=8 AUTHDBG/64  
RPT=304 AUTH\_StartTimer(9aa46fc, 0, 0) 173 08/06/2002 16:45:50.480 SEV=9 AUTHDBG/73 RPT=304  
Reply timer started: handle = 5A100016, timestamp = 355274944, timeout = 4000 174 08/06/2002  
16:45:50.480 SEV=8 AUTHDBG/62 RPT=304 AUTH\_SndRequest(9aa46fc, 0, 0) 175 08/06/2002 16:45:50.480  
SEV=8 AUTHDBG/31 RPT=129 Radius\_Decode(9a03ba8, 726) 176 08/06/2002 16:45:50.480 SEV=13  
AUTHDECODE/0 RPT=14 0000: 012302D6 E8317738 275469B7 A7D230C5 .#...lw8'Ti...0. 0010: 50CC8DE0  
010A7670 6E757365 72310506 P....vpnuser1.. 0020: 0000041C 06060000 00020706 00000001  
..... 0030: 420E3137 312E3639 2E38392E 39301AFF B.171.69.89.90.. 0040: 00000137  
06F90601 000164BF 9A72CBB1 ...7.....d..r.. 0050: FE1F1FFA 7D66A600 45BD9769 DD24BAAF  
....}f..E..i.\$.. 0060: D68FCDF2 BA9F9B2C FABE2BCC 0D66CF62 .....,...f.b 0070: 51F6E280  
F37502AD 53E5D6FB 7648C8D7 Q....u..S...vH.. 0080: 68CCC00F D1B186C8 7217E6DB 7E455DB4  
h.....r...~E]. 0090: EAB2FE0C 2F09C25A 359F4DCA FE15B816 ....Z5.M.... 00A0: 5B113D39  
1101444C B8E85BE4 7BDD367F [=9..DL..[.6. 00B0: 145D5786 38A3A8DC 8D07A029 911DC3D8  
.]W.8.....).... 188 08/06/2002 16:45:50.480 SEV=10 AUTHDECODE/1 RPT=3 Radius: Code = 1 (0x01)  
189 08/06/2002 16:45:50.480 SEV=10 AUTHDECODE/2 RPT=3 Radius: Identifier = 35 (0x23) 190  
08/06/2002 16:45:50.480 SEV=10 AUTHDECODE/3 RPT=3 Radius: Length = 726 (0x02D6) 191 08/06/2002  
16:45:50.480 SEV=10 AUTHDECODE/4 RPT=3 Radius: Vector: 192 08/06/2002 16:45:50.480 SEV=10  
AUTHDECODE/0 RPT=15 0000: E8317738 275469B7 A7D230C5 50CC8DE0 .lw8'Ti...0.P... 193 08/06/2002  
16:45:50.480 SEV=10 AUTHDECODE/5 RPT=14 Radius: Type = 1 (0x01) User-Name 194 08/06/2002  
16:45:50.480 SEV=10 AUTHDECODE/6 RPT=14 Radius: Length = 10 (0x0A) 195 08/06/2002 16:45:50.480

SEV=10 AUTHDECODE/7 RPT=6 Radius: Value (String) = 196 08/06/2002 16:45:50.480 SEV=10  
AUTHDECODE/0 RPT=16 0000: 76706E75 73657231 vpnuser1 197 08/06/2002 16:45:50.480 SEV=10  
AUTHDECODE/5 RPT=15 Radius: Type = 5 (0x05) NAS-Port 198 08/06/2002 16:45:50.480 SEV=10  
AUTHDECODE/6 RPT=15 Radius: Length = 6 (0x06) 199 08/06/2002 16:45:50.480 SEV=10 AUTHDECODE/11  
RPT=5 Radius: Value (Hex) = 0x41C 200 08/06/2002 16:45:50.480 SEV=10 AUTHDECODE/5 RPT=16 Radius:  
Type = 6 (0x06) Service-Type 201 08/06/2002 16:45:50.480 SEV=10 AUTHDECODE/6 RPT=16 Radius:  
Length = 6 (0x06) 202 08/06/2002 16:45:50.480 SEV=10 AUTHDECODE/11 RPT=6 Radius: Value (Hex) =  
0x2 203 08/06/2002 16:45:50.480 SEV=10 AUTHDECODE/5 RPT=17 Radius: Type = 7 (0x07) Framed-  
Protocol 204 08/06/2002 16:45:50.480 SEV=10 AUTHDECODE/6 RPT=17 Radius: Length = 6 (0x06) 205  
08/06/2002 16:45:50.480 SEV=10 AUTHDECODE/11 RPT=7 Radius: Value (Hex) = 0x1 206 08/06/2002  
16:45:50.480 SEV=10 AUTHDECODE/5 RPT=18 Radius: Type = 66 (0x42) Tunnel-Client-Endpoint 207  
08/06/2002 16:45:50.480 SEV=10 AUTHDECODE/6 RPT=18 Radius: Length = 14 (0x0E) 208 08/06/2002  
16:45:50.480 SEV=10 AUTHDECODE/7 RPT=7 Radius: Value (String) = 209 08/06/2002 16:45:50.480  
SEV=10 AUTHDECODE/0 RPT=17 0000: 3137312E 36392E38 392E3930 171.69.89.90 210 08/06/2002  
16:45:50.480 SEV=10 AUTHDECODE/5 RPT=19 Radius: Type = 26 (0x1A) Vendor-Specific 211 08/06/2002  
16:45:50.480 SEV=10 AUTHDECODE/6 RPT=19 Radius: Length = 255 (0xFF) 212 08/06/2002 16:45:50.480  
SEV=10 AUTHDECODE/10 RPT=4 Radius: Vendor ID = 311 (0x00000137) 213 08/06/2002 16:45:50.480  
SEV=10 AUTHDECODE/5 RPT=20 Radius: Type = 6 (0x06) MS-CHAP-NT-Enc-PW 214 08/06/2002 16:45:50.480  
SEV=10 AUTHDECODE/6 RPT=20 Radius: Length = 249 (0xF9) 215 08/06/2002 16:45:50.480 SEV=10  
AUTHDECODE/7 RPT=8 Radius: Value (String) = 216 08/06/2002 16:45:50.480 SEV=10 AUTHDECODE/0  
RPT=18 0000: 06010001 64BF9A72 CBB1FE1F 1FFA7D66 ....d.r.....}f 0010: A60045BD 9769DD24  
BAAFD68F CDF2BA9F ..E..i.\$..... 0020: 9B2CFABE 2BCC0D66 CF6251F6 E280F375 ...+..f.bQ....u  
0030: 02AD53E5 D6FB7648 C8D768CC C00FD1B1 ..S...vH..h.... 0040: 86C87217 E6DB7E45 5DB4EAB2  
FE0C2F09 ..r...~E]...../. 0050: C25A359F 4DCAFE15 B8165B11 3D391101 .Z5.M.....[.=9.. 0060:  
444CB8E8 5BE47BDD 367F145D 578638A3 DL..[.{.6..]W.8. 0070: A8DC8D07 A029911D C3D839D6 12880394  
.....)....9..... 0080: BFCB86DA F5DE706B 616FA285 6B0F2312 .....pkao..k.#. 0090: 5BA566D2  
153D9A88 D970EAA7 EEAE2453 [.f...=...p....\$S 00A0: DC28ECC7 C0B4F4C4 8BF04712 D68F3FCA  
.(.....G...?. 00B0: 89F11100 3FA76070 2EE793E9 4EE10B7C ....?.`p....N..| 228 08/06/2002  
16:45:50.480 SEV=10 AUTHDECODE/5 RPT=21 Radius: Type = 26 (0x1A) Vendor-Specific 229 08/06/2002  
16:45:50.480 SEV=10 AUTHDECODE/6 RPT=21 Radius: Length = 255 (0xFF) 230 08/06/2002 16:45:50.480  
SEV=10 AUTHDECODE/10 RPT=5 Radius: Vendor ID = 311 (0x00000137) 231 08/06/2002 16:45:50.480  
SEV=10 AUTHDECODE/5 RPT=22 Radius: Type = 6 (0x06) MS-CHAP-NT-Enc-PW 232 08/06/2002 16:45:50.480  
SEV=10 AUTHDECODE/6 RPT=22 Radius: Length = 249 (0xF9) 233 08/06/2002 16:45:50.480 SEV=10  
AUTHDECODE/7 RPT=9 Radius: Value (String) = 234 08/06/2002 16:45:50.480 SEV=10 AUTHDECODE/0  
RPT=19 0000: 06010002 424D1964 E0FCDA8 DE020FCF ...BM.d..... 0010: 141848C6 3080EE8C  
098DCB0E C5FD7AD0 ..H.0.....z. 0020: 771E909B 78C84AA0 89CEAA5E D2727D24 w...x.J....^r}\$  
0030: 67D195F9 85F8602E AAB5548 D0F29B5E g.....`...UH...^ 0040: E16380AF 941D7DC0 BD842962  
5673BDBD .c....})bvS.. 0050: E8818EBE 271C7B4F 9E52A02F 8A6AAA8E ....'.{O.R./..j.. 0060:  
D3E142B7 C60FDCE9 AECC4F81 7B926351 ..B.....O.{.cQ 0070: 375530C5 F8BFD23C 5E737129 4164C119  
7U0....<^sq)Ad.. 0080: 4BF7C116 4EB4F82C 5FC2639E 2EAB8DD9 K...N...,\_c..... 0090: 8DD129AC  
84B21D0F 96E11B94 BBB78214 ..)..... 00A0: B2CED1D2 1758E20C 8462F884 26C3292E  
.....X...b..&.). 00B0: D4BAC7F6 7812C981 B5309BE5 509877E5 ....x....0..P.w. 246 08/06/2002  
16:45:50.480 SEV=10 AUTHDECODE/5 RPT=23 Radius: Type = 26 (0x1A) Vendor-Specific 247 08/06/2002  
16:45:50.480 SEV=10 AUTHDECODE/6 RPT=23 Radius: Length = 42 (0x2A) 248 08/06/2002 16:45:50.480  
SEV=10 AUTHDECODE/10 RPT=6 Radius: Vendor ID = 311 (0x00000137) 249 08/06/2002 16:45:50.480  
SEV=10 AUTHDECODE/5 RPT=24 Radius: Type = 6 (0x06) MS-CHAP-NT-Enc-PW 250 08/06/2002 16:45:50.480  
SEV=10 AUTHDECODE/6 RPT=24 Radius: Length = 36 (0x24) 251 08/06/2002 16:45:50.480 SEV=10  
AUTHDECODE/7 RPT=10 Radius: Value (String) = 252 08/06/2002 16:45:50.480 SEV=10 AUTHDECODE/0  
RPT=20 0000: 06010003 47FD5D0E 1840AC0A F345102C ...G.]..@...E., 0010: ED6971DC 1F5CB1D7  
609C5101 4724A804 .iq..\\..`Q.G\$. 0020: 9B9C .. 255 08/06/2002 16:45:50.480 SEV=10 AUTHDECODE/5  
RPT=25 Radius: Type = 26 (0x1A) Vendor-Specific 256 08/06/2002 16:45:50.480 SEV=10 AUTHDECODE/6  
RPT=25 Radius: Length = 24 (0x18) 257 08/06/2002 16:45:50.480 SEV=10 AUTHDECODE/10 RPT=7 Radius:  
Vendor ID = 311 (0x00000137) 258 08/06/2002 16:45:50.480 SEV=10 AUTHDECODE/5 RPT=26 Radius: Type  
= 11 (0x0B) MS-CHAP-Challenge 259 08/06/2002 16:45:50.480 SEV=10 AUTHDECODE/6 RPT=26 Radius:  
Length = 18 (0x12) 260 08/06/2002 16:45:50.480 SEV=10 AUTHDECODE/7 RPT=11 Radius: Value (String)  
= 261 08/06/2002 16:45:50.480 SEV=10 AUTHDECODE/0 RPT=21 0000: A7129F8C 8F87FA68 3D3D0A73  
E70E3AB0 .....h==.s... 262 08/06/2002 16:45:50.480 SEV=10 AUTHDECODE/5 RPT=27 Radius: Type =  
26 (0x1A) Vendor-Specific 263 08/06/2002 16:45:50.480 SEV=10 AUTHDECODE/6 RPT=27 Radius: Length  
= 76 (0x4C) 264 08/06/2002 16:45:50.480 SEV=10 AUTHDECODE/10 RPT=8 Radius: Vendor ID = 311  
(0x00000137) 265 08/06/2002 16:45:50.480 SEV=10 AUTHDECODE/5 RPT=28 Radius: Type = 27 (0x1B) MS-  
CHAP2-CPW 266 08/06/2002 16:45:50.480 SEV=10 AUTHDECODE/6 RPT=28 Radius: Length = 70 (0x46) 267  
08/06/2002 16:45:50.480 SEV=10 AUTHDECODE/7 RPT=12 Radius: Value (String) = 268 08/06/2002  
16:45:50.480 SEV=10 AUTHDECODE/0 RPT=22 0000: 07014E5D FC26F8E9 2F90A59B C04963DA  
..N].&../....Ic. 0010: 048662B6 A996DD49 62AE05FA 5AAFFDDA ..b....Ib...Z... 0020: 96A90000

00000000 0000EF4A 06BB0405 .....J.... 0030: A003F44A F8B81E05 B22506A4 6259979C  
...J.....%.bY.. 0040: 5F510000 \_Q.. 273 08/06/2002 16:45:50.480 SEV=10 AUTHDECODE/5 RPT=29  
Radius: Type = 4 (0x04) NAS-IP-Address 274 08/06/2002 16:45:50.480 SEV=10 AUTHDECODE/6 RPT=29  
Radius: Length = 6 (0x06) 275 08/06/2002 16:45:50.490 SEV=10 AUTHDECODE/9 RPT=2 Radius: Value  
(IP Address) = 172.16.172.36 (0xAC10AC24) 276 08/06/2002 16:45:50.490 SEV=10 AUTHDECODE/5 RPT=30  
Radius: Type = 61 (0x3D) NAS-Port-Type 277 08/06/2002 16:45:50.490 SEV=10 AUTHDECODE/6 RPT=30  
Radius: Length = 6 (0x06) 278 08/06/2002 16:45:50.490 SEV=10 AUTHDECODE/11 RPT=8 Radius: Value  
(Hex) = 0x5 279 08/06/2002 16:45:50.490 SEV=8 AUTHDBG/28 RPT=65 Radius\_Xmt(9aa46fc) 280  
08/06/2002 16:45:50.490 SEV=9 AUTHDBG/71 RPT=304 xmit\_cnt = 1 281 08/06/2002 16:45:50.680 SEV=8  
AUTHDBG/30 RPT=65 Radius\_Match(9aa46fc, 71e7df4), id = 0x23, rcvd = 0x23 **282 08/06/2002**  
**16:45:50.680 SEV=8 AUTHDBG/63 RPT=304 AUTH\_RcvReply(9aa46fc, 0, 0)** 283 08/06/2002 16:45:50.680  
SEV=8 AUTHDBG/31 RPT=130 Radius\_Decode(71e7df4, 213) 284 08/06/2002 16:45:50.680 SEV=13  
AUTHDECODE/0 RPT=23 0000: 022300D5 EF3B5E72 2E31AF7C 7D305207 .#...;^r.1.|}OR. 0010: 27ADA143  
07060000 00010606 00000002 '.C..... 0020: 19204920 05160000 01370001 AB45593C . I  
.....7...EY< 0030: 01C2037B 9CB17432 00000000 00000023 ...{.t2.....# 0040: 1A2A0000 01371124  
80293506 D58538BE .\*.7.\$.)5...8. 0050: 93D9BB03 17133616 C55D4C6F CE5D8848 .....6..]Lo.].H  
0060: 82BAB54B DF490416 84271A2A 00000137 ...K.I...'.\*...7 0070: 1024802A F7F3D930 56008345  
580C49D5 .\$.\*...OV..EX.I. 0080: 414E8B6F 4FABD2EB 65A99BB3 2032E3DB AN.oO...e... 2.. 0090:  
792C0750 1A330000 01371A2D 01533D33 y,.P.3...7.-.S=3 00A0: 37333630 41343233 44384145 42423132  
7360A423D8AEBB12 00B0: 33324239 36413545 36433741 45443938 32B96A5E6C7AED98 296 08/06/2002  
16:45:50.680 SEV=10 AUTHDECODE/1 RPT=4 Radius: Code = 2 (0x02) 297 08/06/2002 16:45:50.680  
SEV=10 AUTHDECODE/2 RPT=4 Radius: Identifier = 35 (0x23) 298 08/06/2002 16:45:50.680 SEV=10  
AUTHDECODE/3 RPT=4 Radius: Length = 213 (0x00D5) 299 08/06/2002 16:45:50.680 SEV=10 AUTHDECODE/4  
RPT=4 Radius: Vector: 300 08/06/2002 16:45:50.680 SEV=10 AUTHDECODE/0 RPT=24 0000: EF3B5E72  
2E31AF7C 7D305207 27ADA143 .;^r.1.|}OR.'.C 301 08/06/2002 16:45:50.680 SEV=10 AUTHDECODE/5  
RPT=31 Radius: Type = 7 (0x07) Framed-Protocol 302 08/06/2002 16:45:50.680 SEV=10 AUTHDECODE/6  
RPT=31 Radius: Length = 6 (0x06) 303 08/06/2002 16:45:50.680 SEV=10 AUTHDECODE/11 RPT=9 Radius:  
Value (Hex) = 0x1 304 08/06/2002 16:45:50.680 SEV=10 AUTHDECODE/5 RPT=32 Radius: Type = 6 (0x06)  
Service-Type 305 08/06/2002 16:45:50.680 SEV=10 AUTHDECODE/6 RPT=32 Radius: Length = 6 (0x06)  
306 08/06/2002 16:45:50.680 SEV=10 AUTHDECODE/11 RPT=10 Radius: Value (Hex) = 0x2 307 08/06/2002  
16:45:50.680 SEV=10 AUTHDECODE/5 RPT=33 Radius: Type = 25 (0x19) Class 308 08/06/2002  
16:45:50.680 SEV=10 AUTHDECODE/6 RPT=33 Radius: Length = 32 (0x20) 309 08/06/2002 16:45:50.680  
SEV=10 AUTHDECODE/7 RPT=13 Radius: Value (String) = 310 08/06/2002 16:45:50.680 SEV=10  
AUTHDECODE/0 RPT=25 0000: 49200516 00000137 0001AB45 593C01C2 I .....7...EY<.. 0010: 037B9CB1  
74320000 00000000 0023 .{.t2.....# 312 08/06/2002 16:45:50.680 SEV=10 AUTHDECODE/5 RPT=34  
Radius: Type = 26 (0x1A) Vendor-Specific 313 08/06/2002 16:45:50.680 SEV=10 AUTHDECODE/6 RPT=34  
Radius: Length = 42 (0x2A) 314 08/06/2002 16:45:50.680 SEV=10 AUTHDECODE/10 RPT=9 Radius: Vendor  
ID = 311 (0x00000137) 315 08/06/2002 16:45:50.680 SEV=10 AUTHDECODE/5 RPT=35 Radius: Type = 17  
(0x11) MS-MPPE-Recv-Key 316 08/06/2002 16:45:50.680 SEV=10 AUTHDECODE/6 RPT=35 Radius: Length =  
36 (0x24) 317 08/06/2002 16:45:50.680 SEV=10 AUTHDECODE/7 RPT=14 Radius: Value (String) = 318  
08/06/2002 16:45:50.680 SEV=10 AUTHDECODE/0 RPT=26 0000: 80293506 D58538BE 93D9BB03 17133616  
)5...8.....6. 0010: C55D4C6F CE5D8848 82BAB54B DF490416 .]Lo.].H...K.I.. 0020: 8427 .' 321  
08/06/2002 16:45:50.680 SEV=10 AUTHDECODE/5 RPT=36 Radius: Type = 26 (0x1A) Vendor-Specific 322  
08/06/2002 16:45:50.680 SEV=10 AUTHDECODE/6 RPT=36 Radius: Length = 42 (0x2A) 323 08/06/2002  
16:45:50.680 SEV=10 AUTHDECODE/10 RPT=10 Radius: Vendor ID = 311 (0x00000137) 324 08/06/2002  
16:45:50.680 SEV=10 AUTHDECODE/5 RPT=37 Radius: Type = 16 (0x10) MS-MPPE-Send-Key 325 08/06/2002  
16:45:50.680 SEV=10 AUTHDECODE/6 RPT=37 Radius: Length = 36 (0x24) 326 08/06/2002 16:45:50.680  
SEV=10 AUTHDECODE/7 RPT=15 Radius: Value (String) = 327 08/06/2002 16:45:50.680 SEV=10  
AUTHDECODE/0 RPT=27 0000: 802AF7F3 D9305600 8345580C 49D5414E .\*.OV..EX.I.AN 0010: 8B6F4FAB  
D2EB65A9 9BB32032 E3DB792C .oO...e... 2..y, 0020: 0750 .P 330 08/06/2002 16:45:50.680 SEV=10  
AUTHDECODE/5 RPT=38 Radius: Type = 26 (0x1A) Vendor-Specific 331 08/06/2002 16:45:50.680 SEV=10  
AUTHDECODE/6 RPT=38 Radius: Length = 51 (0x33) **332 08/06/2002 16:45:50.680 SEV=10 AUTHDECODE/10**  
**RPT=11 Radius: Vendor ID = 311 (0x00000137) 333 08/06/2002 16:45:50.680 SEV=10 AUTHDECODE/5**  
**RPT=39 Radius: Type = 26 (0x1A) MS-CHAP2-Success** 334 08/06/2002 16:45:50.680 SEV=10 AUTHDECODE/6  
RPT=39 Radius: Length = 45 (0x2D) 335 08/06/2002 16:45:50.680 SEV=10 AUTHDECODE/7 RPT=16 Radius:  
Value (String) = 336 08/06/2002 16:45:50.680 SEV=10 AUTHDECODE/0 RPT=28 0000: 01533D33 37333630  
41343233 44384145 .S=37360A423D8AE 0010: 42423132 33324239 36413545 36433741 BB1232B96A5E6C7A  
0020: 45443938 45313841 453032 ED98E18AE02 339 08/06/2002 16:45:50.680 SEV=10 AUTHDECODE/5  
RPT=40 Radius: Type = 26 (0x1A) Vendor-Specific 340 08/06/2002 16:45:50.680 SEV=10 AUTHDECODE/6  
RPT=40 Radius: Length = 14 (0x0E) 341 08/06/2002 16:45:50.680 SEV=10 AUTHDECODE/10 RPT=12  
Radius: Vendor ID = 311 (0x00000137) 342 08/06/2002 16:45:50.680 SEV=10 AUTHDECODE/5 RPT=41  
Radius: Type = 10 (0x0A) Unknown 343 08/06/2002 16:45:50.680 SEV=10 AUTHDECODE/6 RPT=41 Radius:  
Length = 8 (0x08) 344 08/06/2002 16:45:50.680 SEV=8 AUTHDBG/29 RPT=65 Radius\_Rcv(9aa46fc) 345  
08/06/2002 16:45:50.680 SEV=9 AUTHDBG/32 RPT=8 Radius: Discarding unknown Vendor Specific



Attribute: vid = 311, type = 10 346 08/06/2002 16:45:50.680 SEV=8 AUTHDBG/66 RPT=304  
AUTH\_DeleteTimer(9aa46fc, 0, 0) 347 08/06/2002 16:45:50.680 SEV=9 AUTHDBG/74 RPT=304 Reply timer  
stopped: handle = 5A100016, timestamp = 355274964 348 08/06/2002 16:45:50.680 SEV=8 AUTHDBG/58  
RPT=304 AUTH\_Callback(9aa46fc, 0, 0) **349 08/06/2002 16:45:50.680 SEV=6 AUTH/4 RPT=18**  
**171.69.89.90 Authentication successful: handle = 103, server = 171.69.89.60, user = vpnuser1** 350  
08/06/2002 16:45:50.680 SEV=8 AUTHDBG/3 RPT=305 AUTH\_PutAttrTable(103, 19bfc54) 351 08/06/2002  
16:45:50.680 SEV=8 AUTHDBG/60 RPT=304 AUTH\_UnbindServer(9aa46fc, 0, 0) 352 08/06/2002  
16:45:50.680 SEV=9 AUTHDBG/70 RPT=304 Auth Server 18cela4 has been unbound from ACB 9aa46fc,  
sessions = 0 353 08/06/2002 16:45:50.680 SEV=8 AUTHDBG/59 RPT=305 AUTH\_BindServer(9aa46fc, 0, 0)  
354 08/06/2002 16:45:50.680 SEV=9 AUTHDBG/69 RPT=305 Auth Server 18cdfa4 has been bound to ACB  
9aa46fc, sessions = 1 355 08/06/2002 16:45:50.680 SEV=8 AUTHDBG/65 RPT=305  
AUTH\_CreateTimer(9aa46fc, 0, 0) 356 08/06/2002 16:45:50.680 SEV=9 AUTHDBG/72 RPT=305 Reply timer  
created: handle = 5A110016 357 08/06/2002 16:45:50.680 SEV=8 AUTHDBG/61 RPT=305>  
AUTH\_BuildMsg(9aa46fc, 0, 0)> 358 08/06/2002 16:45:50.680 SEV=8 AUTHDBG/64 RPT=305  
AUTH\_StartTimer(9aa46fc, 0, 0) 359 08/06/2002 16:45:50.680 SEV=9 AUTHDBG/73 RPT=305 Reply timer  
started: handle = 5A110016, timestamp = 355274964, timeout = 30000 360 08/06/2002 16:45:50.680  
SEV=8 AUTHDBG/62 RPT=305 AUTH\_SndRequest(9aa46fc, 0, 0)> 361 08/06/2002 16:45:50.680 SEV=8  
AUTHDBG/50 RPT=479 IntDB\_Decode(2ea1004, 57) 362 08/06/2002 16:45:50.680 SEV=10 AUTHDECODE/12  
RPT=11 IntDB: Type = 1 (0x01) User-Name 363 08/06/2002 16:45:50.680 SEV=10 AUTHDECODE/13 RPT=11  
IntDB: Length = 11 (0x0B) 364 08/06/2002 16:45:50.680 SEV=10 AUTHDECODE/14 RPT=5 IntDB: Value  
(String) = 365 08/06/2002 16:45:50.680 SEV=10 AUTHDECODE/0 RPT=29 0000: 77696E64 6F777375 736572  
windowsuser 366 08/06/2002 16:45:50.680 SEV=8 AUTHDBG/47 RPT=479 IntDB\_Xmt(9aa46fc) 367  
08/06/2002 16:45:50.680 SEV=9 AUTHDBG/71 RPT=305 xmit\_cnt = 1 368 08/06/2002 16:45:50.680 SEV=8  
AUTHDBG/47 RPT=480 IntDB\_Xmt(9aa46fc) 369 08/06/2002 16:45:50.780 SEV=8 AUTHDBG/49 RPT=240  
IntDB\_Match(9aa46fc, 62f1c4c) 370 08/06/2002 16:45:50.780 SEV=8 AUTHDBG/63 RPT=305  
AUTH\_RcvReply(9aa46fc, 0, 0) 371 08/06/2002 16:45:50.780 SEV=8 AUTHDBG/50 RPT=480  
IntDB\_Decode(62f1c4c, 170) 372 08/06/2002 16:45:50.780 SEV=10 AUTHDECODE/12 RPT=12 IntDB: Type =  
1 (0x01) User-Name 373 08/06/2002 16:45:50.780 SEV=10 AUTHDECODE/13 RPT=12 IntDB: Length = 11  
(0x0B) 374 08/06/2002 16:45:50.780 SEV=10 AUTHDECODE/14 RPT=6 IntDB: Value (String) = 375  
08/06/2002 16:45:50.780 SEV=10 AUTHDECODE/0 RPT=30 0000: 77696E64 6F777375 736572 windowsuser  
376 08/06/2002 16:45:50.780 SEV=10 AUTHDECODE/12 RPT=13 IntDB: Type = 4109 (0x100D) IPsec-  
Authentication 377 08/06/2002 16:45:50.780 SEV=10 AUTHDECODE/13 RPT=13 IntDB: Length = 4 (0x04)  
378 08/06/2002 16:45:50.780 SEV=10 AUTHDECODE/15 RPT=7 IntDB: Value (Integer) = 6 (0x0006) 379  
08/06/2002 16:45:50.780 SEV=10 AUTHDECODE/12 RPT=14 IntDB: Type = 4123 (0x101B) Split-Tunnel-  
Inclusion-List 380 08/06/2002 16:45:50.780 SEV=10 AUTHDECODE/13 RPT=14 IntDB: Length = 4 (0x04)  
381 08/06/2002 16:45:50.780 SEV=10 AUTHDECODE/14 RPT=7 IntDB: Value (String) = 382 08/06/2002  
16:45:50.780 SEV=10 AUTHDECODE/0 RPT=31 0000: 74657374 test 383 08/06/2002 16:45:50.780 SEV=10  
AUTHDECODE/12 RPT=15 IntDB: Type = 4151 (0x1037) Split-Tunneling-Policy 384 08/06/2002  
16:45:50.780 SEV=10 AUTHDECODE/13 RPT=15 IntDB: Length = 4 (0x04) 385 08/06/2002 16:45:50.780  
SEV=10 AUTHDECODE/15 RPT=8 IntDB: Value (Integer) = 1 (0x0001) 386 08/06/2002 16:45:50.780 SEV=8  
AUTHDBG/48 RPT=240 IntDB\_Rcv(9aa46fc) 387 08/06/2002 16:45:50.780 SEV=8 AUTHDBG/66 RPT=305  
AUTH\_DeleteTimer(9aa46fc, 0, 0) 388 08/06/2002 16:45:50.780 SEV=9 AUTHDBG/74 RPT=305 Reply timer  
stopped: handle = 5A110016, timestamp = 355274974 389 08/06/2002 16:45:50.780 SEV=8 AUTHDBG/58  
RPT=305 AUTH\_Callback(9aa46fc, 0, 0) 390 08/06/2002 16:45:50.780 SEV=6 AUTH/41 RPT=219  
171.69.89.90 Authentication successful: handle = 103, server = Internal, group = windowsuser 391  
08/06/2002 16:45:50.780 SEV=8 AUTHDBG/3 RPT=306 AUTH\_PutAttrTable(103, 19bfc54) 392 08/06/2002  
16:45:50.780 SEV=8 AUTHDBG/60 RPT=305 AUTH\_UnbindServer(9aa46fc, 0, 0) 393 08/06/2002  
16:45:50.780 SEV=9 AUTHDBG/70 RPT=305 Auth Server 18cdfa4 has been unbound from ACB 9aa46fc,  
sessions = 0 394 08/06/2002 16:45:50.780 SEV=8 AUTHDBG/59 RPT=306 AUTH\_BindServer(9aa46fc, 0, 0)  
395 08/06/2002 16:45:50.780 SEV=9 AUTHDBG/69 RPT=306 Auth Server 18cdfa4 has been bound to ACB  
9aa46fc, sessions = 1 396 08/06/2002 16:45:50.780 SEV=8 AUTHDBG/65 RPT=306  
AUTH\_CreateTimer(9aa46fc, 0, 0) 397 08/06/2002 16:45:50.780 SEV=9 AUTHDBG/72 RPT=306 Reply timer  
created: handle = 5A120016 398 08/06/2002 16:45:50.780 SEV=8 AUTHDBG/61 RPT=306  
AUTH\_BuildMsg(9aa46fc, 0, 0) 399 08/06/2002 16:45:50.780 SEV=8 AUTHDBG/64 RPT=306  
AUTH\_StartTimer(9aa46fc, 0, 0) 400 08/06/2002 16:45:50.780 SEV=9 AUTHDBG/73 RPT=306 Reply timer  
started: handle = 5A120016, timestamp = 355274974, timeout = 30000 401 08/06/2002 16:45:50.780  
SEV=8 AUTHDBG/62 RPT=306 AUTH\_SndRequest(9aa46fc, 0, 0) 402 08/06/2002 16:45:50.780 SEV=8  
AUTHDBG/50 RPT=481 IntDB\_Decode(2e8aa34, 57) 403 08/06/2002 16:45:50.780 SEV=10 AUTHDECODE/12  
RPT=16 IntDB: Type = 1 (0x01) User-Name 404 08/06/2002 16:45:50.780 SEV=10 AUTHDECODE/13 RPT=16  
IntDB: Length = 11 (0x0B) 405 08/06/2002 16:45:50.780 SEV=10 AUTHDECODE/14 RPT=8 IntDB: Value  
(String) = 406 08/06/2002 16:45:50.780 SEV=10 AUTHDECODE/0 RPT=32 0000: 77696E64 6F777375 736572  
windowsuser 407 08/06/2002 16:45:50.780 SEV=8 AUTHDBG/47 RPT=481 IntDB\_Xmt(9aa46fc) 408  
08/06/2002 16:45:50.780 SEV=9 AUTHDBG/71 RPT=306 xmit\_cnt = 1 409 08/06/2002 16:45:50.780 SEV=8  
AUTHDBG/47 RPT=482 IntDB\_Xmt(9aa46fc) 410 08/06/2002 16:45:50.880 SEV=8 AUTHDBG/49 RPT=241

IntDB\_Match(9aa46fc, 62fd1a8) 411 08/06/2002 16:45:50.880 SEV=8 AUTHDBG/63 RPT=306  
AUTH\_RcvReply(9aa46fc, 0, 0) 412 08/06/2002 16:45:50.880 SEV=8 AUTHDBG/50 RPT=482  
IntDB\_Decode(62fd1a8, 170) 413 08/06/2002 16:45:50.880 SEV=10 AUTHDECODE/12 RPT=17 IntDB: Type =  
1 (0x01) User-Name 414 08/06/2002 16:45:50.880 SEV=10 AUTHDECODE/13 RPT=17 IntDB: Length = 11  
(0x0B) 415 08/06/2002 16:45:50.880 SEV=10 AUTHDECODE/14 RPT=9 IntDB: Value (String) = 416  
08/06/2002 16:45:50.880 SEV=10 AUTHDECODE/0 RPT=33 0000: 77696E64 6F777375 736572 windowsuser  
417 08/06/2002 16:45:50.880 SEV=10 AUTHDECODE/12 RPT=18 IntDB: Type = 4109 (0x100D) IPsec-  
Authentication 418 08/06/2002 16:45:50.880 SEV=10 AUTHDECODE/13 RPT=18 IntDB: Length = 4 (0x04)  
419 08/06/2002 16:45:50.880 SEV=10 AUTHDECODE/15 RPT=9 IntDB: Value (Integer) = 6 (0x0006) 420  
08/06/2002 16:45:50.880 SEV=10 AUTHDECODE/12 RPT=19 IntDB: Type = 4123 (0x101B) Split-Tunnel-  
Inclusion-List 421 08/06/2002 16:45:50.880 SEV=10 AUTHDECODE/13 RPT=19 IntDB: Length = 4 (0x04)  
422 08/06/2002 16:45:50.880 SEV=10 AUTHDECODE/14 RPT=10 IntDB: Value (String) = 423 08/06/2002  
16:45:50.880 SEV=10 AUTHDECODE/0 RPT=34 0000: 74657374 test 424 08/06/2002 16:45:50.880 SEV=10  
AUTHDECODE/12 RPT=20 IntDB: Type = 4151 (0x1037) Split-Tunneling-Policy 425 08/06/2002  
16:45:50.880 SEV=10 AUTHDECODE/13 RPT=20 IntDB: Length = 4 (0x04) 426 08/06/2002 16:45:50.880  
SEV=10 AUTHDECODE/15 RPT=10 IntDB: Value (Integer) = 1 (0x0001) 427 08/06/2002 16:45:50.880  
SEV=8 AUTHDBG/48 RPT=241 IntDB\_Rcv(9aa46fc) 428 08/06/2002 16:45:50.880 SEV=8 AUTHDBG/66 RPT=306  
AUTH\_DeleteTimer(9aa46fc, 0, 0) 429 08/06/2002 16:45:50.880 SEV=9 AUTHDBG/74 RPT=306 Reply timer  
stopped: handle = 5A120016, timestamp = 355274984 430 08/06/2002 16:45:50.880 SEV=8 AUTHDBG/58  
RPT=306 AUTH\_Callback(9aa46fc, 0, 0) 431 08/06/2002 16:45:50.880 SEV=6 AUTH/41 RPT=220  
171.69.89.90 Authentication successful: handle = 103, server = Internal, group = windowsuser 432  
08/06/2002 16:45:50.880 SEV=8 AUTHDBG/4 RPT=291 AUTH\_GetAttrTable(103, 743aa8) 433 08/06/2002  
16:45:50.880 SEV=8 AUTHDBG/4 RPT=292 AUTH\_GetAttrTable(103, 743ad8) 434 08/06/2002 16:45:50.880  
SEV=8 AUTHDBG/4 RPT=293 AUTH\_GetAttrTable(103, 742a30) 435 08/06/2002 16:45:50.880 SEV=8  
AUTHDBG/2 RPT=264 AUTH\_Close(103) 436 08/06/2002 16:45:50.880 SEV=4 IKE/52 RPT=19 171.69.89.90  
Group [windowsuser] User [vpuser1] User (vpuser1) authenticated. 437 08/06/2002 16:45:50.880  
SEV=8 AUTHDBG/60 RPT=306 AUTH\_UnbindServer(9aa46fc, 0, 0) 438 08/06/2002 16:45:50.880 SEV=9  
AUTHDBG/70 RPT=306 Auth Server 18cdfa4 has been unbound from ACB 9aa46fc, sessions = 0 439  
08/06/2002 16:45:50.880 SEV=8 AUTHDBG/10 RPT=264 AUTH\_Int\_FreeAuthCB(9aa46fc) 440 08/06/2002  
16:45:50.880 SEV=7 AUTH/13 RPT=265 Authentication session closed: handle = 103 441 08/06/2002  
16:45:50.900 SEV=6 IKE/130 RPT=30 171.69.89.90 Group [windowsuser] User [vpuser1] Received  
unsupported transaction mode attribute: 5 443 08/06/2002 16:45:50.930 SEV=4 AUTH/22 RPT=286 User  
vpuser1 connected 444 08/06/2002 16:45:50.930 SEV=4 IKE/119 RPT=23 171.69.89.90 Group  
[windowsuser] User [vpuser1] PHASE 1 COMPLETED 445 08/06/2002 16:45:50.930 SEV=6 IKE/121 RPT=23  
171.69.89.90 Keep-alive type for this connection: DPD 446 08/06/2002 16:45:50.930 SEV=5 IKE/25  
RPT=27 171.69.89.90 Group [windowsuser] User [vpuser1] Received remote Proxy Host data in ID  
Payload: Address 10.10.10.1, Protocol 0, Port 0 449 08/06/2002 16:45:50.930 SEV=5 IKE/24 RPT=23  
171.69.89.90 Group [windowsuser] User [vpuser1] Received local Proxy Host data in ID Payload:  
Address 172.16.172.36, Protocol 0, Port 0 452 08/06/2002 16:45:50.930 SEV=5 IKE/66 RPT=27  
171.69.89.90 Group [windowsuser] User [vpuser1] IKE Remote Peer configured for SA: ESP-3DES-MD5  
454 08/06/2002 16:45:50.930 SEV=5 IKE/75 RPT=27 171.69.89.90 Group [windowsuser] User [vpuser1]  
Overriding Initiator's IPsec rekeying duration from 2147483 to 28800 seconds 456 08/06/2002  
16:45:50.940 SEV=4 IKE/49 RPT=27 171.69.89.90 Group [windowsuser] User [vpuser1] Security  
negotiation complete for User (vpuser1) Responder, Inbound SPI = 0x36291f3d, Outbound SPI =  
0x07345e3e 459 08/06/2002 16:45:50.940 SEV=8 AUTHDBG/1 RPT=265 AUTH\_Open() returns 104 460  
08/06/2002 16:45:50.940 SEV=7 AUTH/12 RPT=266 Authentication session opened: handle = 104 461  
08/06/2002 16:45:50.940 SEV=8 AUTHDBG/3 RPT=307 AUTH\_PutAttrTable(104, 1b3b748) 462 08/06/2002  
16:45:50.940 SEV=8 AUTHDBG/7 RPT=31 AUTH\_Accounting(104, 0, 0) 463 08/06/2002 16:45:50.940 SEV=4  
IKE/120 RPT=27 171.69.89.90 Group [windowsuser] User [vpuser1] PHASE 2 COMPLETED  
(msgid=ed3c1f7c) 464 08/06/2002 16:45:50.940 SEV=8 AUTHDBG/59 RPT=307 AUTH\_BindServer(9a9blec,  
0, 0) 465 08/06/2002 16:45:50.940 SEV=9 AUTHDBG/69 RPT=307 Acct Server 1811fa4 has been bound to  
ACB 9a9blec, sessions = 1 466 08/06/2002 16:45:50.940 SEV=8 AUTHDBG/65 RPT=307  
AUTH\_CreateTimer(9a9blec, 0, 0) 467 08/06/2002 16:45:50.940 SEV=9 AUTHDBG/72 RPT=307 Reply timer  
created: handle = 5A180017 468 08/06/2002 16:45:50.940 SEV=8 AUTHDBG/61 RPT=307  
AUTH\_BuildMsg(9a9blec, 0, 0) 469 08/06/2002 16:45:50.940 SEV=8 AUTHDBG/27 RPT=66  
Radius\_Build(9a9blec) 470 08/06/2002 16:45:50.940 SEV=8 AUTHDBG/64 RPT=307  
AUTH\_StartTimer(9a9blec, 0, 0) 471 08/06/2002 16:45:50.940 SEV=9 AUTHDBG/73 RPT=307 Reply timer  
started: handle = 5A180017, timestamp = 355274990, timeout = 1000 472 08/06/2002 16:45:50.940  
SEV=8 AUTHDBG/62 RPT=307 AUTH\_SndRequest(9a9blec, 0, 0) 473 08/06/2002 16:45:50.940 SEV=8  
AUTHDBG/31 RPT=131 Radius\_Decode(62f2324, 140) 474 08/06/2002 16:45:50.940 SEV=13 AUTHDECODE/0  
RPT=35 0000: 043A008C 0A49A1AF C3022A50 B74B0B97 :...I...\*P.K.. 0010: 887AFEC1 010A7670  
6E757365 72310506 .z....vpuser1.. 0020: 0000041C 06060000 00020706 00000001 .....  
0030: 08060A0A 0A011920 49200516 00000137 ..... I .....7 0040: 0001AB45 593C01C2 037B9CB1  
74320000 ...EY<...{.t2.. 0050: 00000000 00232806 00000001 2C0A3345 .....#(.....3E 0060:

35303030 3144420E 3137312E 36392E38 50001DB.171.69.8 0070: 392E3930 2D060000 00012906 00000000  
9.90-.....)..... 0080: 0406AC10 AC243D06 00000005 .....\$=..... 483 08/06/2002 16:45:50.940  
SEV=10 AUTHDECODE/1 RPT=5 Radius: Code = 4 (0x04) 484 08/06/2002 16:45:50.940 SEV=10  
AUTHDECODE/2 RPT=5 Radius: Identifier = 58 (0x3A) 485 08/06/2002 16:45:50.940 SEV=10  
AUTHDECODE/3 RPT=5 Radius: Length = 140 (0x008C) 486 08/06/2002 16:45:50.940 SEV=10 AUTHDECODE/4  
RPT=5 Radius: Vector: 487 08/06/2002 16:45:50.940 SEV=10 AUTHDECODE/0 RPT=36 0000: 0A49A1AF  
C3022A50 B74B0B97 887AFEC1 .I....\*P.K...z.. 488 08/06/2002 16:45:50.940 SEV=10 AUTHDECODE/5  
RPT=42 Radius: Type = 1 (0x01) User-Name 489 08/06/2002 16:45:50.940 SEV=10 AUTHDECODE/6 RPT=42  
Radius: Length = 10 (0x0A) 490 08/06/2002 16:45:50.940 SEV=10 AUTHDECODE/7 RPT=17 Radius: Value  
(String) = 491 08/06/2002 16:45:50.940 SEV=10 AUTHDECODE/0 RPT=37 0000: 76706E75 73657231  
vpnuser1 492 08/06/2002 16:45:50.940 SEV=10 AUTHDECODE/5 RPT=43 Radius: Type = 5 (0x05) NAS-Port  
493 08/06/2002 16:45:50.940 SEV=10 AUTHDECODE/6 RPT=43 Radius: Length = 6 (0x06) 494 08/06/2002  
16:45:50.940 SEV=10 AUTHDECODE/11 RPT=11 Radius: Value (Hex) = 0x41C 495 08/06/2002 16:45:50.940  
SEV=10 AUTHDECODE/5 RPT=44 Radius: Type = 6 (0x06) Service-Type 496 08/06/2002 16:45:50.940  
SEV=10 AUTHDECODE/6 RPT=44 Radius: Length = 6 (0x06) 497 08/06/2002 16:45:50.940 SEV=10  
AUTHDECODE/11 RPT=12 Radius: Value (Hex) = 0x2 498 08/06/2002 16:45:50.940 SEV=10 AUTHDECODE/5  
RPT=45 Radius: Type = 7 (0x07) Framed-Protocol 499 08/06/2002 16:45:50.940 SEV=10 AUTHDECODE/6  
RPT=45 Radius: Length = 6 (0x06) 500 08/06/2002 16:45:50.940 SEV=10 AUTHDECODE/11 RPT=13 Radius:  
Value (Hex) = 0x1 501 08/06/2002 16:45:50.940 SEV=10 AUTHDECODE/5 RPT=46 Radius: Type = 8 (0x08)  
Framed-IP-Address 502 08/06/2002 16:45:50.940 SEV=10 AUTHDECODE/6 RPT=46 Radius: Length = 6  
(0x06) 503 08/06/2002 16:45:50.940 SEV=10 AUTHDECODE/9 RPT=3 Radius: Value (IP Address) =  
10.10.10.1 (0x0A0A0A01) 504 08/06/2002 16:45:50.940 SEV=10 AUTHDECODE/5 RPT=47 Radius: Type = 25  
(0x19) Class 505 08/06/2002 16:45:50.940 SEV=10 AUTHDECODE/6 RPT=47 Radius: Length = 32 (0x20)  
506 08/06/2002 16:45:50.940 SEV=10 AUTHDECODE/7 RPT=18 Radius: Value (String) = 507 08/06/2002  
16:45:50.940 SEV=10 AUTHDECODE/0 RPT=38 0000: 49200516 00000137 0001AB45 593C01C2 I  
.....7...EY<.. 0010: 037B9CB1 74320000 00000000 0023 {...t.....# 509 08/06/2002 16:45:50.940  
SEV=10 AUTHDECODE/5 RPT=48 Radius: Type = 40 (0x28) Acct-Status-Type 510 08/06/2002 16:45:50.940  
SEV=10 AUTHDECODE/6 RPT=48 Radius: Length = 6 (0x06) 511 08/06/2002 16:45:50.940 SEV=10  
AUTHDECODE/11 RPT=14 Radius: Value (Hex) = 0x1 512 08/06/2002 16:45:50.940 SEV=10 AUTHDECODE/5  
RPT=49 Radius: Type = 44 (0x2C) Acct-Session-Id 513 08/06/2002 16:45:50.940 SEV=10 AUTHDECODE/6  
RPT=49 Radius: Length = 10 (0x0A) 514 08/06/2002 16:45:50.940 SEV=10 AUTHDECODE/7 RPT=19 Radius:  
Value (String) = 515 08/06/2002 16:45:50.940 SEV=10 AUTHDECODE/0 RPT=39 0000: 33453530 30303144  
3E50001D 516 08/06/2002 16:45:50.940 SEV=10 AUTHDECODE/5 RPT=50 Radius: Type = 66 (0x42) Tunnel-  
Client-Endpoint 517 08/06/2002 16:45:50.940 SEV=10 AUTHDECODE/6 RPT=50 Radius: Length = 14  
(0x0E) 518 08/06/2002 16:45:50.940 SEV=10 AUTHDECODE/7 RPT=20 Radius: Value (String) = 519  
08/06/2002 16:45:50.940 SEV=10 AUTHDECODE/0 RPT=40 0000: 3137312E 36392E38 392E3930 171.69.89.90  
520 08/06/2002 16:45:50.940 SEV=10 AUTHDECODE/5 RPT=51 Radius: Type = 45 (0x2D) Acct-Authentic  
521 08/06/2002 16:45:50.940 SEV=10 AUTHDECODE/6 RPT=51 Radius: Length = 6 (0x06) 522 08/06/2002  
16:45:50.940 SEV=10 AUTHDECODE/11 RPT=15 Radius: Value (Hex) = 0x1 523 08/06/2002 16:45:50.940  
SEV=10 AUTHDECODE/5 RPT=52 Radius: Type = 41 (0x29) Acct-Delay-Time 524 08/06/2002 16:45:50.940  
SEV=10 AUTHDECODE/6 RPT=52 Radius: Length = 6 (0x06) 525 08/06/2002 16:45:50.940 SEV=10  
AUTHDECODE/11 RPT=16 Radius: Value (Hex) = 0x0 526 08/06/2002 16:45:50.940 SEV=10 AUTHDECODE/5  
RPT=53 Radius: Type = 4 (0x04) NAS-IP-Address 527 08/06/2002 16:45:50.940 SEV=10 AUTHDECODE/6  
RPT=53 Radius: Length = 6 (0x06) 528 08/06/2002 16:45:50.940 SEV=10 AUTHDECODE/9 RPT=4 Radius:  
Value (IP Address) = 172.16.172.36 (0xAC10AC24) 529 08/06/2002 16:45:50.940 SEV=10 AUTHDECODE/5  
RPT=54 Radius: Type = 61 (0x3D) NAS-Port-Type 530 08/06/2002 16:45:50.940 SEV=10 AUTHDECODE/6  
RPT=54 Radius: Length = 6 (0x06) 531 08/06/2002 16:45:50.940 SEV=10 AUTHDECODE/11 RPT=17 Radius:  
Value (Hex) = 0x5 532 08/06/2002 16:45:50.940 SEV=8 AUTHDBG/28 RPT=66 Radius\_Xmt(9a9blec) 533  
08/06/2002 16:45:50.940 SEV=9 AUTHDBG/71 RPT=307 xmit\_cnt = 1 534 08/06/2002 16:45:51.040 SEV=8  
AUTHDBG/30 RPT=66 Radius\_Match(9a9blec, 500aacc), id = 0x3A, rcvd = 0x3A 535 08/06/2002  
16:45:51.040 SEV=8 AUTHDBG/63 RPT=307 AUTH\_RcvReply(9a9blec, 0, 0) 536 08/06/2002 16:45:51.040  
SEV=8 AUTHDBG/31 RPT=132 Radius\_Decode(500aacc, 20) 537 08/06/2002 16:45:51.040 SEV=13  
AUTHDECODE/0 RPT=41 0000: 053A0014 7DE07642 671D26FA 5B2E1904 ...}.vBg.&.[... 0010: 943FA41A  
.?. 539 08/06/2002 16:45:51.040 SEV=10 AUTHDECODE/1 RPT=6 Radius: Code = 5 (0x05) 540  
08/06/2002 16:45:51.040 SEV=10 AUTHDECODE/2 RPT=6 Radius: Identifier = 58 (0x3A) 541 08/06/2002  
16:45:51.040 SEV=10 AUTHDECODE/3 RPT=6 Radius: Length = 20 (0x0014) 542 08/06/2002 16:45:51.040  
SEV=10 AUTHDECODE/4 RPT=6 Radius: Vector: 543 08/06/2002 16:45:51.040 SEV=10 AUTHDECODE/0 RPT=42  
0000: 7DE07642 671D26FA 5B2E1904 943FA41A }.vBg.&.[...?. 544 08/06/2002 16:45:51.040 SEV=8  
AUTHDBG/29 RPT=66 Radius\_Rcv(9a9blec) 545 08/06/2002 16:45:51.040 SEV=8 AUTHDBG/66 RPT=307  
AUTH\_DeleteTimer(9a9blec, 0, 0) 546 08/06/2002 16:45:51.040 SEV=9 AUTHDBG/74 RPT=307 Reply timer  
stopped: handle = 5A180017, timestamp = 355275000 547 08/06/2002 16:45:51.040 SEV=8 AUTHDBG/58  
RPT=307 AUTH\_Callback(9a9blec, 0, 0) 548 08/06/2002 16:45:51.040 SEV=6 AUTH/10 RPT=31  
171.69.89.90 Accounting successful: handle = 104, server = 171.69.89.154, user = vpnuser1 549  
08/06/2002 16:45:51.040 SEV=8 AUTHDBG/2 RPT=265 AUTH\_Close(104) 550 08/06/2002 16:45:51.040

SEV=8 AUTHDBG/60 RPT=307 AUTH\_UnbindServer(9a9blec, 0, 0) 551 08/06/2002 16:45:51.040 SEV=9 AUTHDBG/70 RPT=307 Acct Server 1811fa4 has been unbound from ACB 9a9blec, sessions = 0 552 08/06/2002 16:45:51.040 SEV=8 AUTHDBG/10 RPT=265 AUTH\_Int\_FreeAuthCB(9a9blec) 553 08/06/2002 16:45:51.040 SEV=7 AUTH/13 RPT=266 Authentication session closed: handle = 104 554 08/06/2002 16:45:54.890 SEV=5 IKE/50 RPT=37 171.69.89.90 Group [windowsuser] User [vpuser1] Connection terminated for peer vpuser1 (Peer Terminate) Remote Proxy 10.10.10.1, Local Proxy 172.16.172.36 557 08/06/2002 16:45:54.890 SEV=8 AUTHDBG/1 RPT=266 AUTH\_Open() returns 105 558 08/06/2002 16:45:54.890 SEV=7 AUTH/12 RPT=267 Authentication session opened: handle = 105 559 08/06/2002 16:45:54.890 SEV=8 AUTHDBG/3 RPT=308 AUTH\_PutAttrTable(105, 1b3b730) 560 08/06/2002 16:45:54.890 SEV=8 AUTHDBG/7 RPT=32 AUTH\_Accounting(105, 0, 0) 561 08/06/2002 16:45:54.890 SEV=4 AUTH/28 RPT=23 171.69.89.90 User [vpuser1] disconnected: Duration: 0:00:03 Bytes xmt: 0 Bytes rcv: 0 Reason: User Requested 563 08/06/2002 16:45:54.890 SEV=8 AUTHDBG/59 RPT=308 AUTH\_BindServer(9a043f0, 0, 0) 564 08/06/2002 16:45:54.890 SEV=9 AUTHDBG/69 RPT=308 Acct Server 1811fa4 has been bound to ACB 9a043f0, sessions = 1 565 08/06/2002 16:45:54.890 SEV=8 AUTHDBG/65 RPT=308 AUTH\_CreateTimer(9a043f0, 0, 0) 566 08/06/2002 16:45:54.890 SEV=9 AUTHDBG/72 RPT=308 Reply timer created: handle = 5A19001B 567 08/06/2002 16:45:54.890 SEV=8 AUTHDBG/61 RPT=308 AUTH\_BuildMsg(9a043f0, 0, 0) 568 08/06/2002 16:45:54.890 SEV=8 AUTHDBG/27 RPT=67 Radius\_Build(9a043f0) 569 08/06/2002 16:45:54.890 SEV=8 AUTHDBG/64 RPT=308 AUTH\_StartTimer(9a043f0, 0, 0) 570 08/06/2002 16:45:54.890 SEV=9 AUTHDBG/73 RPT=308 Reply timer started: handle = 5A19001B, timestamp = 355275385, timeout = 1000 571 08/06/2002 16:45:54.890 SEV=8 AUTHDBG/62 RPT=308 AUTH\_SndRequest(9a043f0, 0, 0) 572 08/06/2002 16:45:54.890 SEV=8 AUTHDBG/31 RPT=133 Radius\_Decode(630894c, 176) 573 08/06/2002 16:45:54.890 SEV=13 AUTHDECODE/0 RPT=43 0000: 043B00B0 295505F0 864A0A1F 6345232B ;...)U...J..cE#+ 0010: 81D315E5 010A7670 6E757365 72310506 .....vpuser1.. 0020: 0000041C 06060000 00020706 00000001 ..... 0030: 08060A0A 0A011920 49200516 00000137 ..... I .....7 0040: 0001AB45 593C01C2 037B9CB1 74320000 ...EY<...{.t2.. 0050: 00000000 00232806 00000002 2A060000 .....#(.....\*... 0060: 00002B06 00000000 2C0A3345 35303030 ..+.....,3E5000 0070: 31442E06 00000004 2F060000 00003006 1D...../.....0. 0080: 00000000 31060000 0001420E 3137312E ....1.....B.171. 0090: 36392E38 392E3930 2D060000 00012906 69.89.90-.....). 00A0: 00000000 0406AC10 AC243D06 00000005 .....\$=..... 584 08/06/2002 16:45:54.890 SEV=10 AUTHDECODE/1 RPT=7 Radius: Code = 4 (0x04) 585 08/06/2002 16:45:54.890 SEV=10 AUTHDECODE/2 RPT=7 Radius: Identifier = 59 (0x3B) 586 08/06/2002 16:45:54.890 SEV=10 AUTHDECODE/3 RPT=7 Radius: Length = 176 (0x00B0) 587 08/06/2002 16:45:54.890 SEV=10 AUTHDECODE/4 RPT=7 Radius: Vector: 588 08/06/2002 16:45:54.890 SEV=10 AUTHDECODE/0 RPT=44 0000: 295505F0 864A0A1F 6345232B 81D315E5 )U...J..cE#+.... 589 08/06/2002 16:45:54.890 SEV=10 AUTHDECODE/5 RPT=55 Radius: Type = 1 (0x01) User-Name 590 08/06/2002 16:45:54.890 SEV=10 AUTHDECODE/6 RPT=55 Radius: Length = 10 (0x0A) 591 08/06/2002 16:45:54.890 SEV=10 AUTHDECODE/7 RPT=21 Radius: Value (String) = 592 08/06/2002 16:45:54.890 SEV=10 AUTHDECODE/0 RPT=45 0000: 76706E75 73657231 vpuser1 593 08/06/2002 16:45:54.900 SEV=10 AUTHDECODE/5 RPT=56 Radius: Type = 5 (0x05) NAS-Port 594 08/06/2002 16:45:54.900 SEV=10 AUTHDECODE/6 RPT=56 Radius: Length = 6 (0x06) 595 08/06/2002 16:45:54.900 SEV=10 AUTHDECODE/11 RPT=18 Radius: Value (Hex) = 0x41C 596 08/06/2002 16:45:54.900 SEV=10 AUTHDECODE/5 RPT=57 Radius: Type = 6 (0x06) Service-Type 597 08/06/2002 16:45:54.900 SEV=10 AUTHDECODE/6 RPT=57 Radius: Length = 6 (0x06) 598 08/06/2002 16:45:54.900 SEV=10 AUTHDECODE/11 RPT=19 Radius: Value (Hex) = 0x2 599 08/06/2002 16:45:54.900 SEV=10 AUTHDECODE/5 RPT=58 Radius: Type = 7 (0x07) Framed-Protocol 600 08/06/2002 16:45:54.900 SEV=10 AUTHDECODE/6 RPT=58 Radius: Length = 6 (0x06) 601 08/06/2002 16:45:54.900 SEV=10 AUTHDECODE/11 RPT=20 Radius: Value (Hex) = 0x1 602 08/06/2002 16:45:54.900 SEV=10 AUTHDECODE/5 RPT=59 Radius: Type = 8 (0x08) Framed-IP-Address 603 08/06/2002 16:45:54.900 SEV=10 AUTHDECODE/6 RPT=59 Radius: Length = 6 (0x06) 604 08/06/2002 16:45:54.900 SEV=10 AUTHDECODE/9 RPT=5 Radius: Value (IP Address) = 10.10.10.1 (0x0A0A0A01) 605 08/06/2002 16:45:54.900 SEV=10 AUTHDECODE/5 RPT=60 Radius: Type = 25 (0x19) Class 606 08/06/2002 16:45:54.900 SEV=10 AUTHDECODE/6 RPT=60 Radius: Length = 32 (0x20) 607 08/06/2002 16:45:54.900 SEV=10 AUTHDECODE/7 RPT=22 Radius: Value (String) = 608 08/06/2002 16:45:54.900 SEV=10 AUTHDECODE/0 RPT=46 0000: 49200516 00000137 0001AB45 593C01C2 I .....7...EY<... 0010: 037B9CB1 74320000 00000000 0023 .{.t2.....# 610 08/06/2002 16:45:54.900 SEV=10 AUTHDECODE/5 RPT=61 Radius: Type = 40 (0x28) Acct-Status-Type 611 08/06/2002 16:45:54.900 SEV=10 AUTHDECODE/6 RPT=61 Radius: Length = 6 (0x06) 612 08/06/2002 16:45:54.900 SEV=10 AUTHDECODE/11 RPT=21 Radius: Value (Hex) = 0x2 613 08/06/2002 16:45:54.900 SEV=10 AUTHDECODE/5 RPT=62 Radius: Type = 42 (0x2A) Acct-Input-Octets 614 08/06/2002 16:45:54.900 SEV=10 AUTHDECODE/6 RPT=62 Radius: Length = 6 (0x06) 615 08/06/2002 16:45:54.900 SEV=10 AUTHDECODE/11 RPT=22 Radius: Value (Hex) = 0x0 616 08/06/2002 16:45:54.900 SEV=10 AUTHDECODE/5 RPT=63 Radius: Type = 43 (0x2B) Acct-Output-Octets 617 08/06/2002 16:45:54.900 SEV=10 AUTHDECODE/6 RPT=63 Radius: Length = 6 (0x06) 618 08/06/2002 16:45:54.900 SEV=10 AUTHDECODE/11 RPT=23 Radius: Value (Hex) = 0x0 619 08/06/2002 16:45:54.900 SEV=10 AUTHDECODE/5 RPT=64 Radius: Type = 44 (0x2C) Acct-Session-Id 620 08/06/2002 16:45:54.900 SEV=10 AUTHDECODE/6 RPT=64 Radius: Length = 10 (0x0A) 621 08/06/2002 16:45:54.900 SEV=10

AUTHDECODE/7 RPT=23 Radius: Value (String) = 622 08/06/2002 16:45:54.900 SEV=10 AUTHDECODE/0  
RPT=47 0000: 33453530 30303144 3E50001D 623 08/06/2002 16:45:54.900 SEV=10 AUTHDECODE/5 RPT=65  
Radius: Type = 46 (0x2E) Acct-Session-Time 624 08/06/2002 16:45:54.900 SEV=10 AUTHDECODE/6  
RPT=65 Radius: Length = 6 (0x06) 625 08/06/2002 16:45:54.900 SEV=10 AUTHDECODE/11 RPT=24 Radius:  
Value (Hex) = 0x4 626 08/06/2002 16:45:54.900 SEV=10 AUTHDECODE/5 RPT=66 Radius: Type = 47  
(0x2F) Acct-Input-Packets 627 08/06/2002 16:45:54.900 SEV=10 AUTHDECODE/6 RPT=66 Radius: Length  
= 6 (0x06) 628 08/06/2002 16:45:54.900 SEV=10 AUTHDECODE/11 RPT=25 Radius: Value (Hex) = 0x0 629  
08/06/2002 16:45:54.900 SEV=10 AUTHDECODE/5 RPT=67 Radius: Type = 48 (0x30) Acct-Output-Packets  
630 08/06/2002 16:45:54.900 SEV=10 AUTHDECODE/6 RPT=67 Radius: Length = 6 (0x06) 631 08/06/2002  
16:45:54.900 SEV=10 AUTHDECODE/11 RPT=26 Radius: Value (Hex) = 0x0 632 08/06/2002 16:45:54.900  
SEV=10 AUTHDECODE/5 RPT=68 Radius: Type = 49 (0x31) Acct-Terminate-Cause 633 08/06/2002  
16:45:54.900 SEV=10 AUTHDECODE/6 RPT=68 Radius: Length = 6 (0x06) 634 08/06/2002 16:45:54.900  
SEV=10 AUTHDECODE/11 RPT=27 Radius: Value (Hex) = 0x1 635 08/06/2002 16:45:54.900 SEV=10  
AUTHDECODE/5 RPT=69 Radius: Type = 66 (0x42) Tunnel-Client-Endpoint 636 08/06/2002 16:45:54.900  
SEV=10 AUTHDECODE/6 RPT=69 Radius: Length = 14 (0x0E) 637 08/06/2002 16:45:54.900 SEV=10  
AUTHDECODE/7 RPT=24 Radius: Value (String) = 638 08/06/2002 16:45:54.900 SEV=10 AUTHDECODE/0  
RPT=48 0000: 3137312E 36392E38 392E3930 171.69.89.90 639 08/06/2002 16:45:54.900 SEV=10  
AUTHDECODE/5 RPT=70 Radius: Type = 45 (0x2D) Acct-Authentic 640 08/06/2002 16:45:54.900 SEV=10  
AUTHDECODE/6 RPT=70 Radius: Length = 6 (0x06) 641 08/06/2002 16:45:54.900 SEV=10 AUTHDECODE/11  
RPT=28 Radius: Value (Hex) = 0x1 642 08/06/2002 16:45:54.900 SEV=10 AUTHDECODE/5 RPT=71 Radius:  
Type = 41 (0x29) Acct-Delay-Time 643 08/06/2002 16:45:54.900 SEV=10 AUTHDECODE/6 RPT=71 Radius:  
Length = 6 (0x06) 644 08/06/2002 16:45:54.900 SEV=10 AUTHDECODE/11 RPT=29 Radius: Value (Hex) =  
0x0 645 08/06/2002 16:45:54.900 SEV=10 AUTHDECODE/5 RPT=72 Radius: Type = 4 (0x04) NAS-IP-  
Address 646 08/06/2002 16:45:54.900 SEV=10 AUTHDECODE/6 RPT=72 Radius: Length = 6 (0x06) 647  
08/06/2002 16:45:54.900 SEV=10 AUTHDECODE/9 RPT=6 Radius: Value (IP Address) = 172.16.172.36  
(0xAC10AC24) 648 08/06/2002 16:45:54.900 SEV=10 AUTHDECODE/5 RPT=73 Radius: Type = 61 (0x3D)  
NAS-Port-Type 649 08/06/2002 16:45:54.900 SEV=10 AUTHDECODE/6 RPT=73 Radius: Length = 6 (0x06)  
650 08/06/2002 16:45:54.900 SEV=10 AUTHDECODE/11 RPT=30 Radius: Value (Hex) = 0x5 651 08/06/2002  
16:45:54.900 SEV=8 AUTHDBG/28 RPT=67 Radius\_Xmt(9a043f0) 652 08/06/2002 16:45:54.900 SEV=9  
AUTHDBG/71 RPT=308 xmit\_cnt = 1 653 08/06/2002 16:45:54.900 SEV=6 IKE/38 RPT=31 171.69.89.90  
Header invalid, missing SA payload! (next payload = 8) 654 08/06/2002 16:45:54.900 SEV=8  
AUTHDBG/30 RPT=67 Radius\_Match(9a043f0, 5009d58), id = 0x3B, rcvd = 0x3B 655 08/06/2002  
16:45:54.900 SEV=8 AUTHDBG/63 RPT=308 AUTH\_RcvReply(9a043f0, 0, 0) 656 08/06/2002 16:45:54.900  
SEV=8 AUTHDBG/31 RPT=134 Radius\_Decode(5009d58, 20) 657 08/06/2002 16:45:54.900 SEV=13  
AUTHDECODE/0 RPT=49 0000: 053B0014 A7C83B83 2EA5C679 FB0B4540 .;....;....y..E@ 0010: 4F1A83EB  
O... 659 08/06/2002 16:45:54.900 SEV=10 AUTHDECODE/1 RPT=8 Radius: Code = 5 (0x05) 660  
08/06/2002 16:45:54.900 SEV=10 AUTHDECODE/2 RPT=8 Radius: Identifier = 59 (0x3B) 661 08/06/2002  
16:45:54.900 SEV=10 AUTHDECODE/3 RPT=8 Radius: Length = 20 (0x0014) 662 08/06/2002 16:45:54.900  
SEV=10 AUTHDECODE/4 RPT=8 Radius: Vector: 663 08/06/2002 16:45:54.900 SEV=10 AUTHDECODE/0 RPT=50  
0000: A7C83B83 2EA5C679 FB0B4540 4F1A83EB .;....y..E@O... 664 08/06/2002 16:45:54.900 SEV=8  
AUTHDBG/29 RPT=67 Radius\_Rcv(9a043f0) 665 08/06/2002 16:45:54.900 SEV=8 AUTHDBG/66 RPT=308  
AUTH\_DeleteTimer(9a043f0, 0, 0) 666 08/06/2002 16:45:54.900 SEV=9 AUTHDBG/74 RPT=308 Reply timer  
stopped: handle = 5A19001B, timestamp = 355275395 667 08/06/2002 16:45:54.900 SEV=8 AUTHDBG/58  
RPT=308 AUTH\_Callback(9a043f0, 0, 0) 668 08/06/2002 16:45:54.900 SEV=6 AUTH/10 RPT=32  
171.69.89.90 Accounting successful: handle = 105, server = 171.69.89.154, user = vpnuser1 669  
08/06/2002 16:45:54.900 SEV=8 AUTHDBG/2 RPT=266 AUTH\_Close(105) 670 08/06/2002 16:45:54.900  
SEV=8 AUTHDBG/60 RPT=308 AUTH\_UnbindServer(9a043f0, 0, 0) 671 08/06/2002 16:45:54.900 SEV=9  
AUTHDBG/70 RPT=308 Acct Server 1811fa4 has been unbound from ACB 9a043f0, sessions = 0 672  
08/06/2002 16:45:54.900 SEV=8 AUTHDBG/10 RPT=266 AUTH\_Int\_FreeAuthCB(9a043f0) 673 08/06/2002  
16:45:54.900 SEV=7 AUTH/13 RPT=267 Authentication session closed: handle = 105

## [Información Relacionada](#)

- [Página de soporte del concentrador de la serie Cisco VPN 3000](#)
- [Página de soporte al cliente Serie Cisco VPN 3000](#)
- [Página de soporte de IPSec](#)
- [Soporte Técnico - Cisco Systems](#)