



## Troubleshooting

---

This chapter provides information for diagnosing and correcting common problems that may occur when you install and operate the client adapter.

The following topics are covered in this chapter:

- [Accessing the Latest Troubleshooting Information, page 10-2](#)
- [Interpreting the Indicator LEDs, page 10-2](#)
- [Troubleshooting the Client Adapter, page 10-3](#)
- [Error Messages, page 10-12](#)

## Accessing the Latest Troubleshooting Information

This chapter provides basic troubleshooting tips for your client adapter. For more up-to-date and detailed troubleshooting information, refer to the TAC web site. To access this site, go to Cisco.com, click **Technical Support > Hardware Support > Wireless Devices**. Then choose your product and click **Troubleshooting** to find information on the problem you are experiencing.

## Interpreting the Indicator LEDs

The client adapter shows messages through its two LEDs. [Table 10-1](#) interprets the LED operating messages.

**Table 10-1 LED Operating Messages**

Status LED (green)	Activity LED (amber)	Condition
Off	Off	Client adapter is not receiving power.
Blinking slowly	Off	Client adapter is in power save mode.
On	Off	Client adapter has awakened from power save mode.
Alternating blink:		Client adapter is scanning for the wireless network for which it is configured.
On	Off	
Off	On	
Blinking slowly	Blinking slowly	Client adapter is associated to an access point (in infrastructure mode) or another client (in ad hoc mode).
Blinking quickly	Blinking quickly	Client adapter is transmitting or receiving data while associated to an access point (in infrastructure mode) or another client (in ad hoc mode).

# Troubleshooting the Client Adapter

This section provides troubleshooting tips should you encounter problems with your client adapter. Use [Table 10-2](#) to quickly find specific troubleshooting information.

**Table 10-2 Troubleshooting Information**

Troubleshooting Information	Page Number
Using the troubleshooting utility	10-3
Disabling the Microsoft Wireless Configuration Manager	10-8
Disabling the Microsoft 802.1X supplicant	10-8
Client adapter recognition problems	10-9
Resolving resource conflicts	10-9
Problems associating to an access point	10-11
Problems authenticating to an access point	10-11
Problems connecting to the network	10-11
Prioritizing network connections	10-11
Parameters missing from Profile Management windows	10-12
Windows Wireless Network Connection icon shows unavailable connection (Windows XP only)	10-12

## Using the Troubleshooting Utility

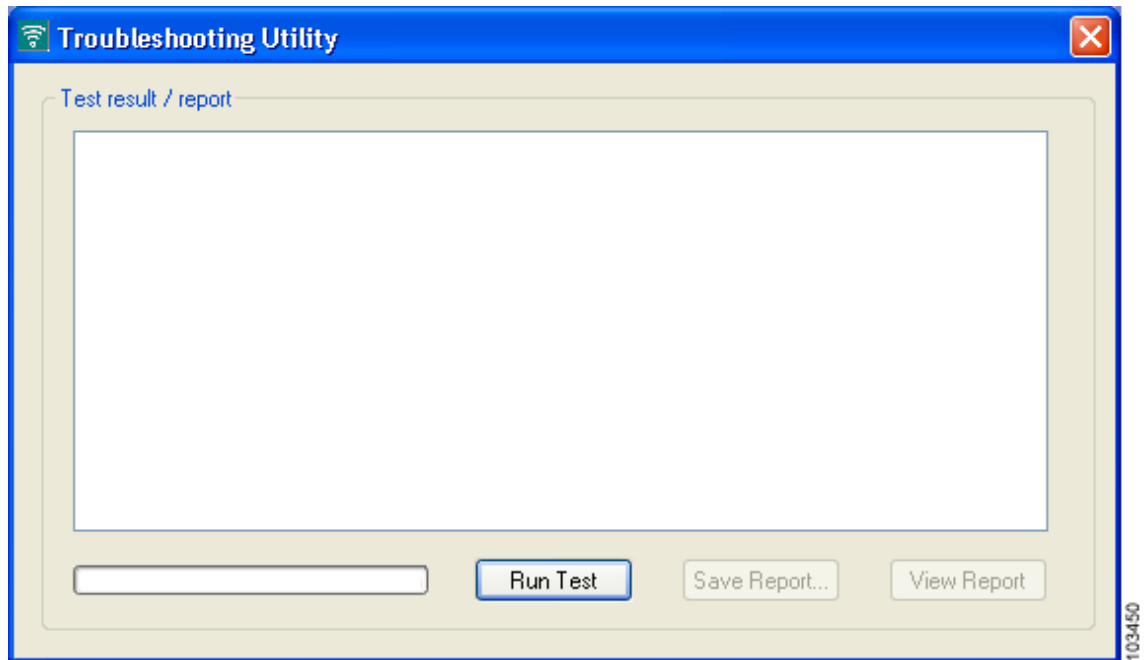
The troubleshooting utility enables you to identify and resolve configuration and association problems with your client adapter. It is meant to be used only when the client adapter is in infrastructure mode because it assesses the connection between the adapter and an access point.

Follow the instructions in one of the subsections below to use the utility to diagnosis your client adapter's operation, save a detailed report to a text file, or access online help.

## Diagnosing Your Client Adapter's Operation

- 
- Step 1** Perform one of the following to activate the troubleshooting utility:
- Open ADU; choose **Troubleshooting** from the Action drop-down menu.
  - Open ADU; click the **Diagnostics** tab and **Troubleshooting**.
  - Right-click the ASTU icon; choose **Troubleshooting** from the pop-up menu.

The Troubleshooting Utility window appears (see [Figure 10-1](#)).

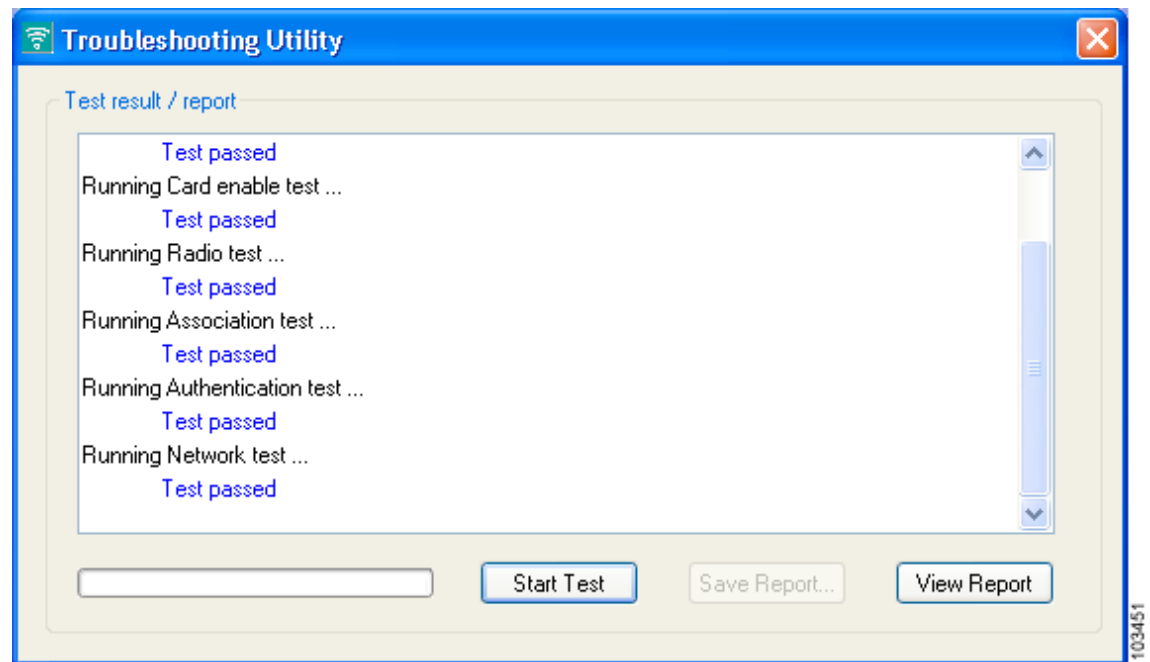
**Figure 10-1** Troubleshooting Utility Window

**Step 2** Click **Run Test**. The utility performs the following series of seven tests to check the operation of your client adapter and to identify specific problems if they exist:

1. Driver installation test
2. Card insertion test
3. Card enable test
4. Radio test
5. Association test
6. Authentication test
7. Network test

The utility runs and then displays the results for each test (see [Figure 10-2](#)).

Figure 10-2 Troubleshooting Utility Window (with Test Results)



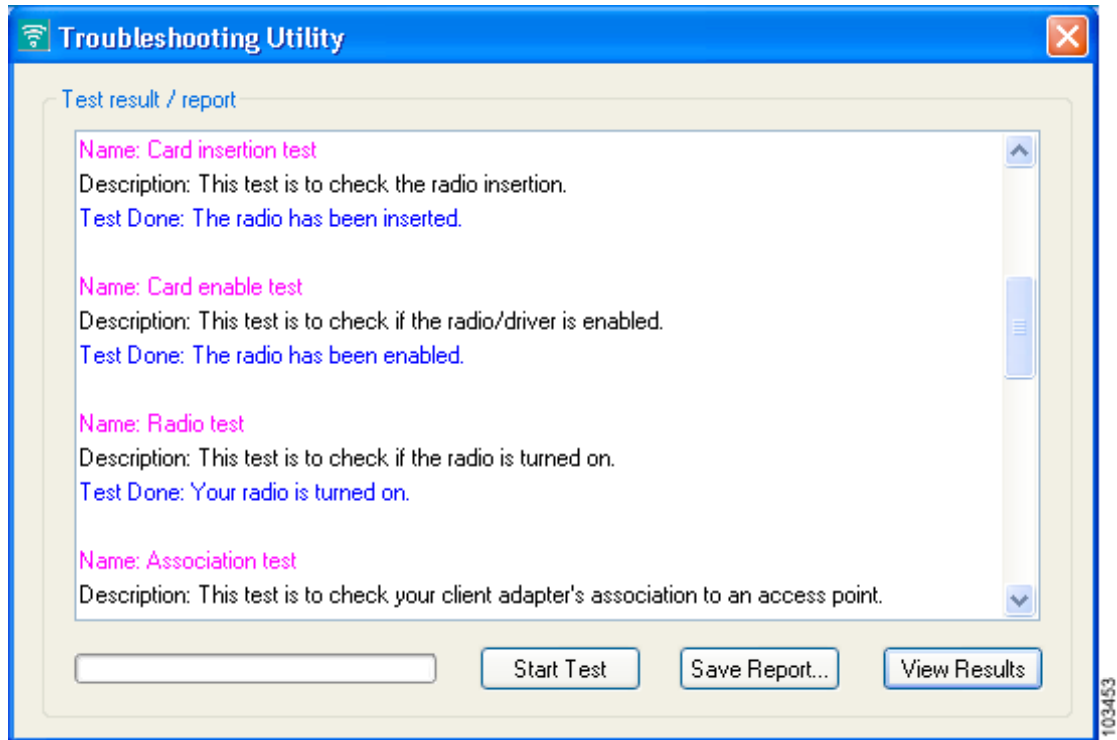
One of the following status messages appears for each test:

- **Test passed**—The test completed successfully.
- **Test bypassed**—The test was skipped because it was not required for the active profile.
- **Test failed**—The test failed. Follow the instructions in [Step 3](#) to obtain more details.



**Note** You can click **Stop Test** at any time to stop the testing process, or you can click **Start Test** after the testing process has stopped to run the test again.

**Step 3** To view more detailed information, click **View Report**. A report appears that provides more detailed results for your client adapter (see [Figure 10-3](#)).

**Figure 10-3** Troubleshooting Utility Window (Detailed Report)**Note**

The report contains valuable information that, if necessary, could be used by your system administrator or TAC to analyze any problems. Follow the instructions in the next section if you want to save the report to a text file.

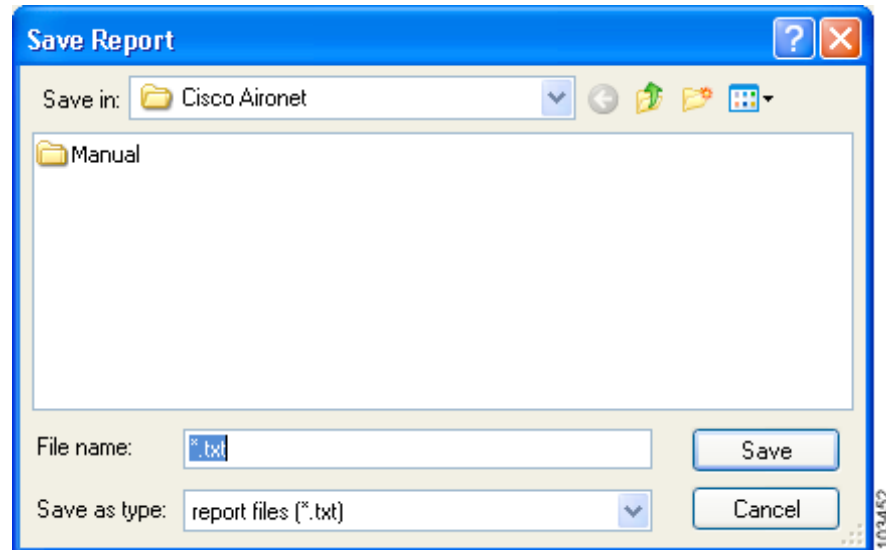
- Step 4** If a problem is discovered, the report provides some possible repair suggestions. Follow the repair instructions carefully and run the troubleshooting utility again.

## Saving the Detailed Report to a Text File

Follow the steps below to save the detailed troubleshooting report to your computer's hard drive.

- Step 1** Click **Save Report**. The Save Report window appears (see [Figure 10-4](#)).

**Figure 10-4** Save Report Window



- Step 2** Enter a name for the detailed report in the File name field. The report is saved as a \*.txt file.
- Step 3** Use the Save in box at the top of the window to specify the location on your computer's hard drive where the file will be saved.



**Note** The default location is the directory where ADU is installed (such as C:\Program Files\Cisco Aironet).

- Step 4** Click **Save**. The file is saved as a text file in the location specified.

## Disabling the Microsoft Wireless Configuration Manager (Windows XP Only)

If any conflicts arise between ADU and the Microsoft Wireless Configuration Manager on a computer running Windows XP, follow these steps to disable the Microsoft configuration manager.


**Note**

If you chose to configure your client adapter using ADU during installation, the Microsoft 802.1X supplicant should already be disabled.


**Note**

Disabling the Microsoft Wireless Configuration Manager on Windows XP also disables the Microsoft 802.1X supplicant.

- 
- Step 1** Double-click **My Computer**, **Control Panel**, and **Network Connections**.
- Step 2** Right-click **Wireless Network Connection** and click **Properties**.
- Step 3** Click the **Wireless Networks** tab and uncheck the **Use Windows to configure my wireless network settings** check box.
- Step 4** Click **OK** to save your settings.
- 

## Disabling the Microsoft 802.1X Supplicant

The Microsoft 802.1X supplicant can be installed on a computer running Windows 2000 through either a Microsoft hot fix or Windows 2000 Service Pack 4. If any conflicts arise between ADU and the Microsoft 802.1X supplicant, follow these steps to disable the Microsoft supplicant on a Windows 2000 computer.


**Note**

The Microsoft 802.1X supplicant, if installed, should have been disabled during installation.


**Note**

Disabling the Microsoft Wireless Configuration Manager on Windows XP also disables the Microsoft 802.1X supplicant.

- 
- Step 1** Double-click **My Computer**, **Control Panel**, and **Network and Dial-up Connections**. Right-click **Local Area Connection**. Click **Properties**. The Local Area Connection Properties window appears.
- Step 2** Click the **Authentication** tab.
- Step 3** Uncheck the **Enable network access control using IEEE 802.1X** or **Enable IEEE 802.1x authentication for this network** check box.
- Step 4** Click **OK** to save your settings.
-



## Client Adapter Recognition Problems

If your computer's PCMCIA adapter does not recognize your client adapter, check your computer's BIOS and make sure that the PC card controller mode is set to PCIC compatible.

**Note**

A computer's BIOS varies depending on the manufacturer. For support on BIOS-related issues, consult your computer's manufacturer.

## Resolving Resource Conflicts

If you encounter problems while installing your client adapter on a computer running a Windows operating system, you may need to specify a different interrupt request (IRQ) or I/O range for the adapter.

The default IRQ for the client adapter is IRQ 10, which may not work for all systems. Follow the steps for your specific operating system to obtain an available IRQ.

During installation the adapter's driver installation script scans for an unused I/O range. The installation can fail if the I/O range found by the driver installation script is occupied by another device but not reported by Windows. An I/O range might not be reported if a device is physically present in the system but not enabled under Windows. Follow the steps for your specific operating system to obtain an available I/O range.

## Resolving Resource Conflicts in Windows 2000

- Step 1** Double-click **My Computer**, **Control Panel**, and **System**.
- Step 2** Click the **Hardware** tab and **Device Manager**.
- Step 3** Double-click **Network Adapters** and the Cisco Systems Wireless LAN Adapter.
- Step 4** In the General window, the Device Status field indicates if a resource problem exists. If a problem is indicated, click the **Resources** tab.
- Step 5** Uncheck the **Use automatic settings** check box.
- Step 6** Under Resource Settings or Resource Type, click **Input/Output Range**.
- Step 7** Look in the Conflicting Device list at the bottom of the window. If it indicates that the range is being used by another device, click the **Change Setting** button.
- Step 8** Scroll through the ranges in the Value dialog box and choose one that does not conflict with another device. The Conflict Information window at the bottom of the window indicates if the range is already being used.
- Step 9** Click **OK**.
- Step 10** Under Resource Settings or Resource Type, click **Interrupt Request**.
- Step 11** Look in the Conflicting Device list at the bottom of the window. If it indicates that the IRQ is being used by another device, click the **Change Setting** button.

- Step 12** Scroll through the IRQs in the Value dialog box and choose one that does not conflict with another device. The Conflict Information window at the bottom of the window indicates if the IRQ is already being used.
  - Step 13** Click **OK**.
  - Step 14** Reboot your computer.
- 

## Resolving Resource Conflicts in Windows XP



**Note** These instructions assume you are using the Windows XP classic view, not the category view.

---

- Step 1** Double-click **My Computer**, **Control Panel**, and **System**.
  - Step 2** Click the **Hardware** tab and **Device Manager**.
  - Step 3** Under Network Adapters, double-click the Cisco Systems Wireless LAN Adapter.
  - Step 4** In the General window, the Device Status field indicates if a resource problem exists. If a problem is indicated, click the **Resources** tab.
  - Step 5** Uncheck the **Use automatic settings** check box.
  - Step 6** Under Resource Settings, click **I/O Range**.
  - Step 7** Look in the Conflicting Device list at the bottom of the window. If it indicates that the range is being used by another device, click the **Change Setting** button.
  - Step 8** Scroll through the ranges in the Value dialog box and choose one that does not conflict with another device. The Conflict Information window at the bottom of the window indicates if the range is already being used.
  - Step 9** Click **OK**.
  - Step 10** Under Resource Settings, click **IRQ**.
  - Step 11** Look in the Conflicting Device list at the bottom of the window. If it indicates that the IRQ is being used by another device, click the **Change Setting** button.
  - Step 12** Scroll through the IRQs in the Value dialog box and choose one that does not conflict with another device. The Conflict Information window at the bottom of the window indicates if the IRQ is already being used.
  - Step 13** Click **OK**.
  - Step 14** Reboot your computer.
-

## Problems Associating to an Access Point

Follow the instructions below if your client adapter fails to associate to an access point.

- If possible, move your workstation a few feet closer to an access point and try again.
- Make sure that the client adapter is securely inserted in your computer's client adapter slot.
- If you are using a PCI card, make sure that the antenna is securely attached.
- Make sure that the access point is turned on and operating.
- Check that all parameters are set properly for both the client adapter and the access point. These include the SSID, EAP authentication, WEP activation, network type, channel, etc.
- Follow the instructions in the previous section to resolve any resource conflicts.
- If the client adapter still fails to establish contact, refer to the [“Obtaining Technical Assistance”](#) section in the Preface for technical support information.

## Problems Authenticating to an Access Point

If your client adapter is a 40-bit card and LEAP or EAP is enabled, the adapter can associate but not authenticate to access points using 128-bit encryption. To authenticate to an access point using 128-bit encryption, you have two options:

- Purchase a 128-bit client adapter. This is the most secure option.
- Disable static WEP for the client adapter and configure the adapter and the access point to associate to mixed cells. This option presents a security risk because your data is not encrypted as it is sent over the RF network.

## Problems Connecting to the Network

After you have installed the appropriate driver and client utilities, contact your IS department if you have a problem connecting to the network. Proxy server, network protocols, and further authentication information might be needed to connect to the network.

## Prioritizing Network Connections

If your computer has more than one network adapter enabled (such as a Cisco Aironet client adapter and an Ethernet card), you can choose which one to use by assigning a priority to your network connections.

Follow the steps below to prioritize your network connections.

- 
- Step 1** Right-click the **My Network Places** icon on your desktop.
  - Step 2** Click **Properties**.
  - Step 3** Choose the **Advanced** menu option at the top of the window.

- Step 4** Click **Advanced Settings**. Your network connections are listed in the Connections box on the Adapters and Bindings tab.
- Step 5** Use the arrows beside the Connections box to move the network connection that you want to use to the top.
- Step 6** Click **OK**.
- 

## Parameters Missing from Profile Management Windows

If some parameters are unavailable on the Profile Management windows, your system administrator may have used an administrative tool to deactivate these parameters. In this case, these parameters cannot be selected.

## Windows Wireless Network Connection Icon Shows Unavailable Connection (Windows XP Only)

If your computer is running Windows XP and you configured your client adapter using ADU, the Windows Wireless Network Connection icon in the Windows system tray may be marked with a red X and show an unavailable connection even though a wireless connection exists. This is caused by a conflict between the wireless network settings of ADU and Windows XP. Simply ignore the Windows icon and use the ASTU icon to check the status of your client adapter's wireless connection.

## Error Messages

This section provides a list of error messages that may appear during the installation, configuration, or use of your client adapter. The messages are listed in alphabetical order within each section, and an explanation as well as a recommended user action are provided for each message.

**Error Message** At least one wireless checkbox must be selected.

**Explanation** You clicked **OK** or selected another Profile Management tab before selecting any Wireless Mode options on the Profile Management (Advanced) window.

**Recommended Action** Choose at least one of the Wireless Mode options.

**Error Message** Authentication failed.

**Explanation** The domain logon failed for an unknown reason.

**Recommended Action** Try again to authenticate. If this message reappears, verify that all of the proper certificates have been loaded onto your computer and that your client adapter's current profile has been configured properly. If the domain logon continues to fail, contact your system administrator.

**Error Message** Authentication failed because server rejected username or password.

**Explanation** The domain logon failed because your username or password is invalid.

**Recommended Action** Re-enter your username and password on the Define PEAP (EAP-GTC) Configuration window or the Define PEAP (EAP-MSCHAP V2) Configuration window and save your settings. Then try again to authenticate.

**Error Message** Authentication failed due to invalid client attributes (e.g., Login Name).

**Explanation** The domain logon failed because of an invalid client configuration setting, such as a mistyped login name.

**Recommended Action** Return to the PEAP configuration windows, verify your settings, and make any necessary modifications.

**Error Message** Authentication failed due to invalid client certificate.

**Explanation** The domain logon failed because of an invalid client certificate.

**Recommended Action** Contact your system administrator to obtain a valid certificate.

**Error Message** Authentication failed due to invalid server certificate.

**Explanation** The domain logon failed because of an invalid server certificate.

**Recommended Action** Contact your system administrator.

**Error Message** Authentication failed due to invalid server/domain name.

**Explanation** The domain logon failed because of an invalid server/domain name.

**Recommended Action** Make sure the Specific Server or Domain field is blank on the Advanced Configuration window for PEAP (EAP-GTC) or PEAP (EAP-MSCHAP V2). Then follow the instructions in the [“Enabling PEAP \(EAP-GTC\)” section on page 5-29](#) or the [“Enabling PEAP \(EAP-MSCHAP V2\)” section on page 5-31](#) to correctly enter your username in the Login Name field.

**Error Message** Authentication timed out. Do you want to retry?

**Explanation** LEAP authentication failed because the authentication server is down.

**Recommended Action** Click **Retry** to try to authenticate again using the same credentials or click **Cancel** to cancel the operation.

**Error Message** Cannot load oemres.dll.

**Explanation** The oemres.dll file cannot be installed.

**Recommended Action** Uninstall the current client adapter software; then install the latest release.

**Error Message** Cisco Aironet 802.11a/b/g wireless adapter software update can't proceed. Please insert the adapter in the system and try again.

**Explanation** You attempted to upgrade your client adapter's software when the adapter was not inserted in your computer.

**Recommended Action** Click **OK**, insert your client adapter, and start the upgrade process again.

**Error Message** DHCP failure.

**Explanation** The domain logon failed because of a DHCP failure.

**Recommended Action** Try again to authenticate. If this message reappears, contact your system administrator.

**Error Message** Entry must be xx characters long. Please enter xx more characters.

**Explanation** The static WEP key that you entered on the Define Pre-Shared Keys window does not contain the correct number of characters.

**Recommended Action** Re-enter the static WEP key following the guidelines in the [“Enabling Static WEP”](#) section on page 5-22.

**Error Message** Failed to initialize supplicant. This error may be due to the absence of a valid machine certificate or the incomplete configuration of profiles.

**Explanation** The domain logon failed because the EAP supplicant could not be initialized.

**Recommended Action** Verify that a valid machine certificate has been loaded onto your computer and that your client adapter's current profile has been configured properly.

**Error Message** In order to select an Ad Hoc network, you must have a Network Name. Do you want to enter a Network Name?

**Explanation** You chose Ad Hoc for Network Type on the Profile Management (Advanced) window, but a network name was not entered on the Profile Management (General) window.

**Recommended Action** If you want to set up an ad hoc network, click **Yes** and enter a network name in the SSID1 field on the Profile Management (General) window. Otherwise, click **No**.

**Error Message** No certificates were found in your computer. Please select a different EAP option.

**Explanation** You tried to choose the EAP-TLS option on the Profile Management (Security) window, but no certificates are installed on your computer. EAP-TLS requires both a Certificate Authority (CA) certificate and a user certificate.

**Recommended Action** Contact your system administrator if you need help obtaining and importing the necessary certificates.

**Error Message** Please enter a profile name.

**Explanation** While creating a new profile, you clicked **OK** or chose another Profile Management tab before entering a profile name on the Profile Management (General) window.

**Recommended Action** Enter a profile name.

**Error Message** Please enter exactly 12 characters, or leave the entry field empty.

**Explanation** You entered fewer than 12 characters in one of the fields on the Preferred Access Points window.

**Recommended Action** Leave the fields on the Preferred Access Points window empty or re-enter the MAC address for the specified access point, which must be exactly 12 characters.

**Error Message** The configuration name you entered is already being used. Enter a unique name.

**Explanation** While creating a new profile, you entered a profile name on the Profile Management (General) window that already exists.

**Recommended Action** Enter a new profile name.

**Error Message** The Passphrase must be between 8 and 64 characters.

**Explanation** The WPA Passphrase that you entered on the Define WPA Pre-Shared Key window did not contain the correct number of characters.

**Recommended Action** Enter a WPA Passphrase with 8 to 64 characters.

**Error Message** The password is empty. Please enter a password.

**Explanation** You chose the Use Saved User Name and Password option on the LEAP Settings window but did not enter a password, or you did not enter a password on the Enter Wireless Network Password window.

**Recommended Action** Enter your LEAP password in the Password field.

**Error Message** The passwords you entered do not match. Please enter them again.

**Explanation** The passwords that you entered in the Password and Confirm Password fields on the LEAP Settings window do not match.

**Recommended Action** Re-enter your LEAP password in both fields.

**Error Message** The specified path does not exist. Please enter another path.

**Explanation** You chose the **Make Driver Installation Diskette(s)** option during installation, but a diskette was not inserted in the computer's A: drive.

**Recommended Action** Insert a floppy diskette into your computer's floppy disk drive, and choose the **Make Driver Installation Diskette(s)** option again.

**Error Message** The user name is empty. Please enter a user name.

**Explanation** You chose the Use Saved User Name and Password option on the LEAP Settings window but did not enter a username, or you did not enter a username on the Enter Wireless Network Password window.

**Recommended Action** Enter your LEAP username in the User Name field.

**Error Message** This Device is controlled by the Windows XP Automatic Wireless Network Configuration. It may override Network Name, Security and other settings from this profile.

**Explanation** You attempted to activate ADU while the Microsoft Wireless Configuration Manager in Windows XP was enabled. When a message appeared asking if you wanted to disable the Microsoft configuration manager, you chose No.

**Recommended Action** If you want to use ADU to configure your client adapter, disable the Microsoft Wireless Configuration Manager.

**Error Message** This Product does not support this version of Windows. Please check the product documentation for the system requirements.

**Explanation** You tried to install the CB21AG and PI21AG client adapter software on an unsupported Windows operating system.

**Recommended Action** Install the CB21AG and PI21AG client adapter software on a computer running Windows 2000 or XP.

**Error Message** 'x' contains characters which are non-hexadecimal.

**Explanation** One of the static WEP keys on the Define Pre-Shared Keys window contains non-hexadecimal characters even though Hexadecimal is specified as the Key Entry type.

**Recommended Action** Re-enter the static WEP key following the guidelines in the [“Enabling Static WEP”](#) section on page 5-22.



**Error Message** 'x' is not a hexadecimal character.

**Explanation** The character you entered on the Define Pre-Shared Keys window is not a hexadecimal character.

**Recommended Action** Re-enter the static WEP key following the guidelines in the “[Enabling Static WEP](#)” section on page 5-22.

**Error Message** You must select a Passphrase to use Pre-Shared keys and WPA.

**Explanation** You chose the Pre-Shared Key (Static WEP) option on the Profile Management (Security) window and clicked **OK** without entering a static WEP key.

**Recommended Action** Enter a static WEP key on the Define Pre-Shared Keys window.

**Error Message** You must set at least one shared key or the WPA Passphrase to enable security.

**Explanation** You chose the WPA Passphrase option on the Profile Management (Security) window and clicked **OK** without entering a WPA Passphrase.

**Recommended Action** Enter a WPA Passphrase on the Define WPA Pre-Shared Key window.

**Error Message** Your security setting is invalid for an Ad Hoc network. If you want, security will be disabled for you. You can also configure security to Pre-shared keys. Do you want to disable security?

**Explanation** Pre-Shared Key (Static WEP) is the only valid security option for an ad hoc network. You chose Ad Hoc for Network Type on the Profile Management (Advanced) window when a security option other than static WEP was already selected.

**Recommended Action** If you want to configure this profile for use in an ad hoc network, click **Yes** to disable security. Otherwise, click **No**.

