



CHAPTER 1

Overview

This chapter provides an overview of the Cisco Aironet Client Administration Utility (ACAU).

The following topics are covered in this chapter:

- [Introduction to ACAU, page 1-2](#)
- [ACAU Components, page 1-3](#)
- [Configuration File, page 1-4](#)
- [Products Supported, page 1-5](#)

Introduction to ACAU

ACAU is a utility used by administrators to set software installation options and create *profiles* (saved configurations) for users who install Cisco Aironet CB21AG and PI21AG Wireless LAN Client Adapters in computers running the Windows 2000 or Windows XP operating system. Administrators save the installation settings and profiles to a configuration file. Then when the user installs the client adapter software (driver and client utilities), the Install Wizard uses the instructions in the configuration file to govern the installation and setup of the client utilities and load one or more preconfigured user profiles. Administrators can create configuration files to control the installation and configuration of client adapters for one user or groups of users.

**Note**

To ensure proper operation, use ACAU version 2.5 only with Install Wizard version 2.5.

Terminology

The following terms are used throughout this document:

- **client adapter**—Refers to both types of adapters.
- **client adapter software**—Refers to the client adapter driver and client utilities that are installed by the Install Wizard. The client utilities include the Aironet Desktop Utility (ADU), Aironet System Tray Utility (ASTU), site survey utility, and profile migration tool.

**Note**

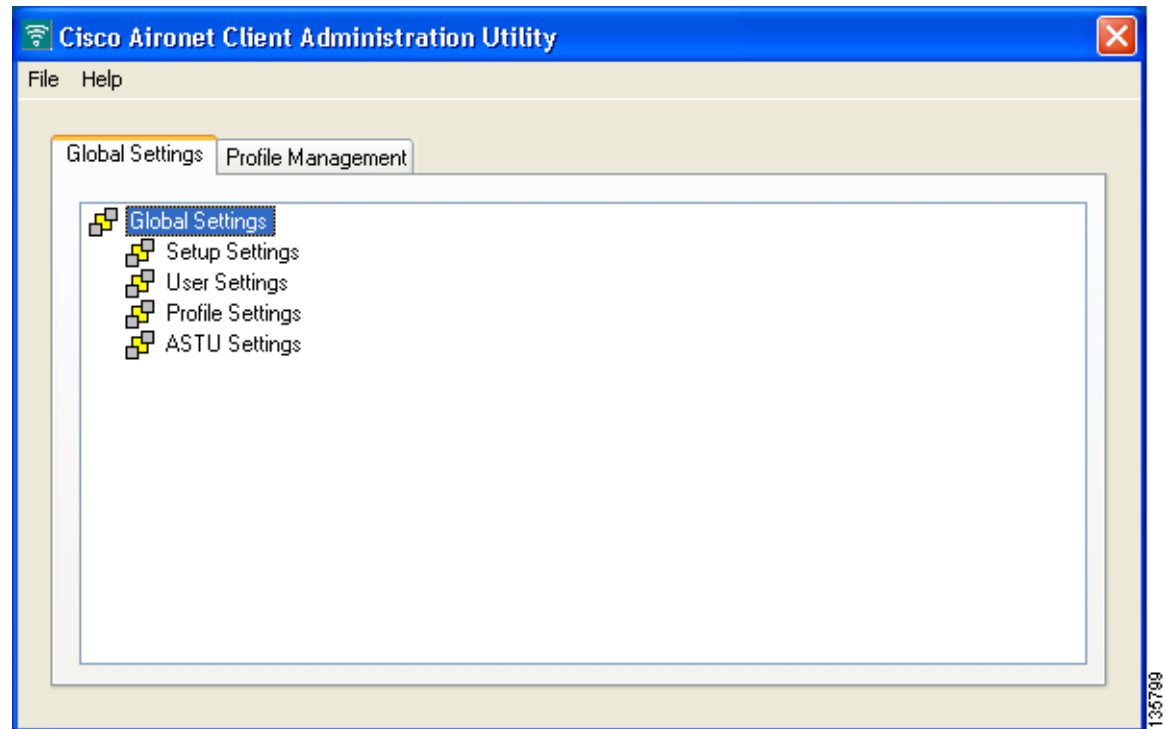
Refer to the *Cisco Aironet 802.11a/b/g Wireless LAN Client Adapters (CB21AG and PI21AG) Installation and Configuration Guide* for more information on the Install Wizard, the client adapter driver, and the client utilities.

- **infrastructure device**—Refers to a device that connects client adapters to a wired LAN, such as an access point, bridge, or base station. Throughout this document, *access point* is used to represent infrastructure devices in general.
- **PC-Cardbus card** or **PCI card**—Refers to a specific client adapter.

ACAU Components

Figure 1-1 shows the ACAU main window. ACAU contains two configuration tabs and two drop-down menus.

Figure 1-1 ACAU Main Window



ACAU Configuration Tabs

The ACAU main window provides two configuration tabs: Global Settings and Profile Management.

Global Settings Tab

The Global Settings tab enables you to set parameters that govern the installation and configuration of the client adapter software installed by the Install Wizard. It contains four groups of parameters:

- **Setup Settings**—Affect how the client adapter software is installed and configured on the user's computer
- **User Settings**—Specify user rights and privileges with regard to profiles
- **Profile Settings**—Control how profiles are managed on the user's computer
- **ASTU Settings**—Determine the Aironet System Tray Utility (ASTU) options that are available to the user



Note

Chapter 4 describes the Global Settings tab parameters and explains how to configure them.

Profile Management Tab

The Profile Management tab enables you to create configuration profiles that govern the operation of the user's client adapter. This tab can also be used to modify, import, and export profiles.

**Note**

[Chapter 5](#) explains how to use the Profile Management tab to create, modify, import, and export profiles.

ACAU Menus

The ACAU main window provides two drop-down menus: File and Help.

File Menu

The File drop-down menu contains these options:

- **New**—Creates a new ACAU configuration file.
- **Open**—Opens an existing ACAU configuration file.
- **Save**—Saves the ACAU configuration file.
- **Save As**—Saves the ACAU configuration file to a specified location.
- **Read from registry**—Imports existing profiles from your computer's Windows registry.
- **Exit**—Closes ACAU.

Help Menu

The Help drop-down menu contains these options:

- **Contents**—Provides help on ACAU options and settings.

**Note**

Context-sensitive help is not available in ACAU.

- **About**—Provides the ACAU version number.

Configuration File

The configuration file stores the installation options that you set on the Global Settings tab and the profiles that you create on the Profile Management tab. The file is encrypted to protect sensitive security data such as SSIDs, WEP keys, and network security settings.

ACAU automatically names the configuration file *CiscoAdminConfig.dat* and prompts you to save it in the Cisco Aironet folder. When the user installs the client adapter software, the Install Wizard uses the configuration file to implement the installation settings and load the profiles you specified in ACAU.

**Note**

You can create the configuration file before or after setting installation options and creating profiles; however, creating the configuration file first is the preferred method.

**Note**

You must save the configuration file to the drive and directory in which the Install Wizard resides. If you save the file to any other location, it is not processed by the Install Wizard.

**Note**

You can change the name of the configuration file; however, the name must be changed back to *CiscoAdminConfig.dat* before running the Install Wizard. Otherwise, the Install Wizard does not load the configuration file.

**Note**

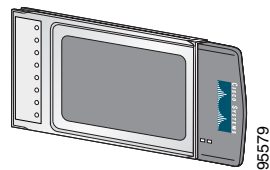
[Chapter](#) explains how to create new configuration files and modify existing configuration files.

Products Supported

ACAU supports these products:

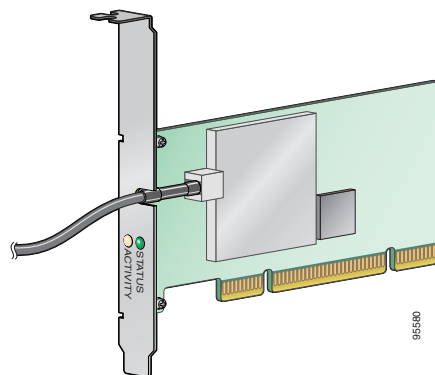
- **PC-Cardbus card** (model number: AIR-CB21AG)—An IEEE 802.11a/b/g-compliant 2.4- and 5-GHz 54-Mbps client adapter card radio module with a Cardbus interface that can be inserted into any device equipped with a 32-bit Cardbus slot. See [Figure 1-2](#).

Figure 1-2 PC-Cardbus Card



- **PCI card** (model number: AIR-PI21AG)—An IEEE 802.11a/b/g-compliant 2.4- and 5-GHz 54-Mbps client adapter card radio module that can be inserted into any device equipped with an empty PCI expansion slot. See [Figure 1-3](#).

Figure 1-3 PCI Card



**Caution**

ACAU is compatible only with Cisco Aironet CB21AG and PI21AG client adapters. Other administration utilities are available for use with the Cisco Aironet 340, 350, and CB20A client adapters.
