



Using ACAU

This chapter describes how to use ACAU to create or modify configuration files and manage profiles.

The following topics are covered in this chapter:

- [Creating a New Configuration File, page 3-2](#)
- [Modifying an Existing Configuration File, page 3-6](#)
- [Managing Profiles, page 3-7](#)

Creating a New Configuration File

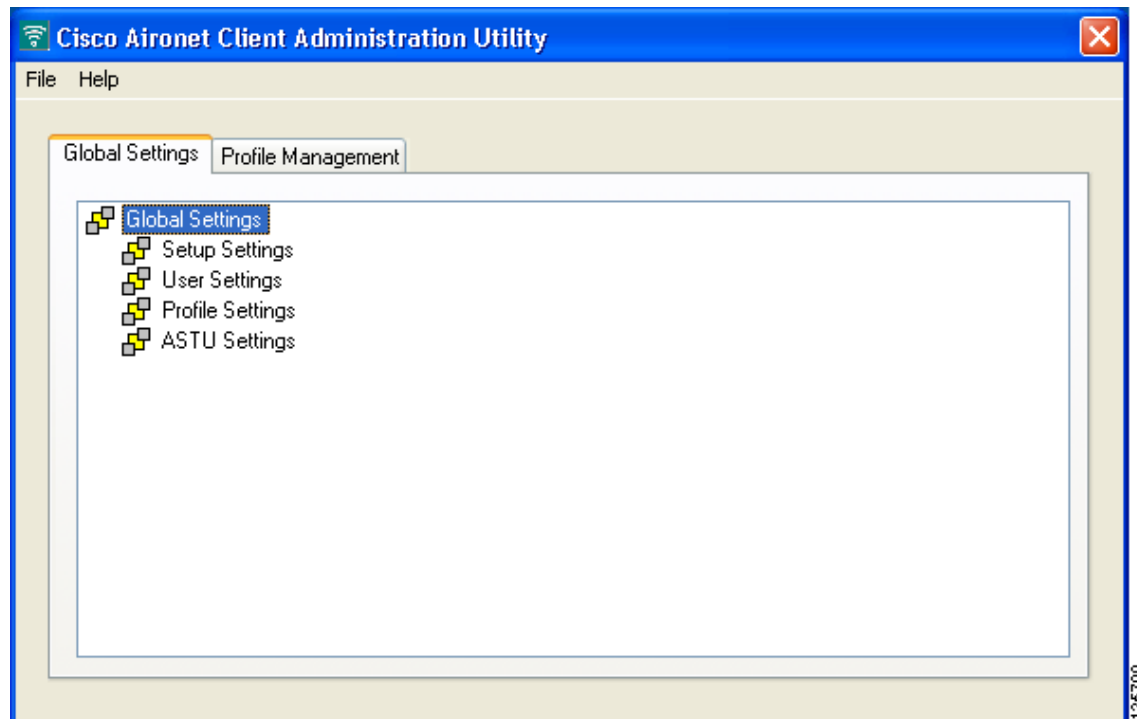
The configuration file is the file you create to govern the installation of client adapter software and load configuration profiles on a user's computer. Its settings are activated when the user uses the Install Wizard to install the client adapter software.

The configuration file contains two components: global settings and profiles. Global settings are administrative parameters that determine how the client adapter software is installed on a user's computer. You can override the default parameters using the Global Settings tab. Profiles are saved configurations that govern the operation of a user's client adapter. You can use the Profile Management tab to create profiles. Both components are saved in the configuration file, which is named *CiscoAdminConfig.dat*.

Follow these steps to create a new configuration file.

- Step 1** Open ACAU. The Global Settings window appears (see [Figure 3-1](#)).

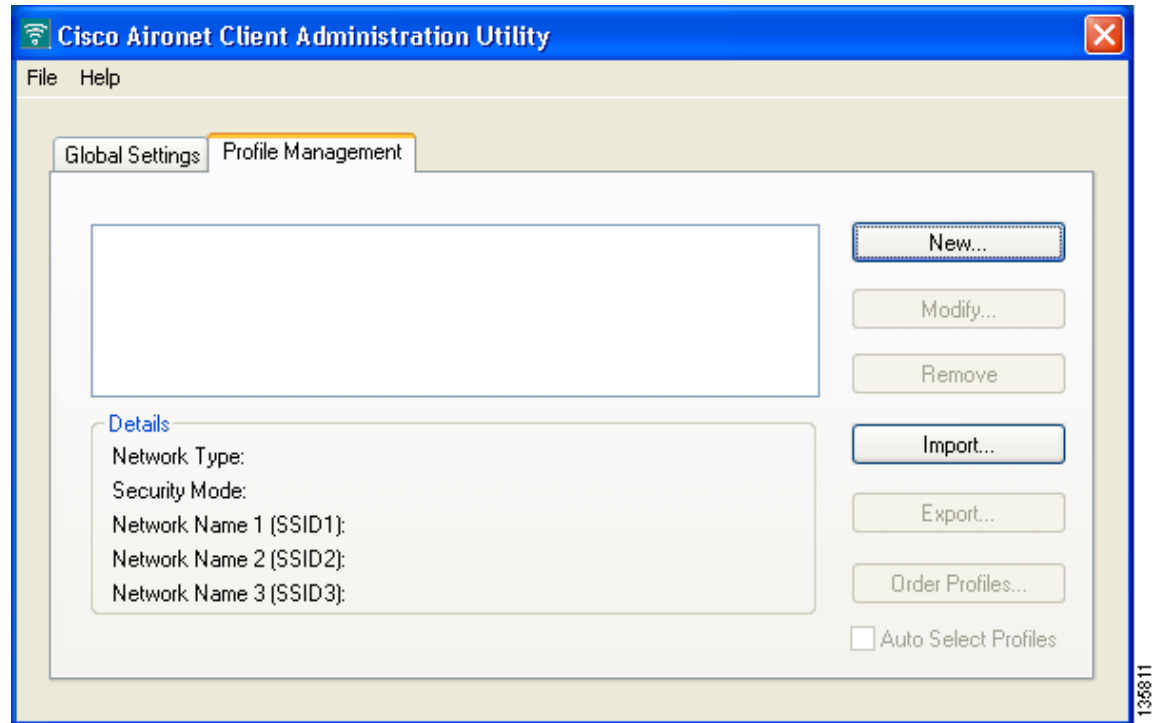
Figure 3-1 Global Settings Window



- Step 2** Choose **New** from the File drop-down menu. ACAU names the file *New* and displays the name in the window's title bar.
- Step 3** Under **Global Settings**, double-click each of the four groups of configurable parameters (Setup Settings, User Settings, Profile Settings, and ASTU Settings) to view its individual parameters.
- Step 4** Follow the instructions in [Chapter 4](#) to change the settings of any global parameters.

- Step 5 Click the **Profile Management** tab to access the profile management options. The Profile Management window appears (see [Figure 3-2](#)).

Figure 3-2 Profile Management Window



Step 6 Click **New**. The Profile Editor (General) window appears (see [Figure 3-3](#)).

Figure 3-3 Profile Editor (General) Window

The screenshot shows a dialog box titled "Profile Editor [new]". It has three tabs: "General", "Security", and "Advanced". The "General" tab is active. The dialog is divided into two sections: "Profile Settings" and "Network Names".

- Profile Settings:** Contains two text input fields: "Profile Name:" and "Client Name:".
- Network Names:** Contains three text input fields: "SSID1:", "SSID2:", and "SSID3:".

At the bottom right of the dialog, there are "OK" and "Cancel" buttons. A small number "135798" is visible in the bottom right corner of the window.

Step 7 Enter a profile name and SSID(s).

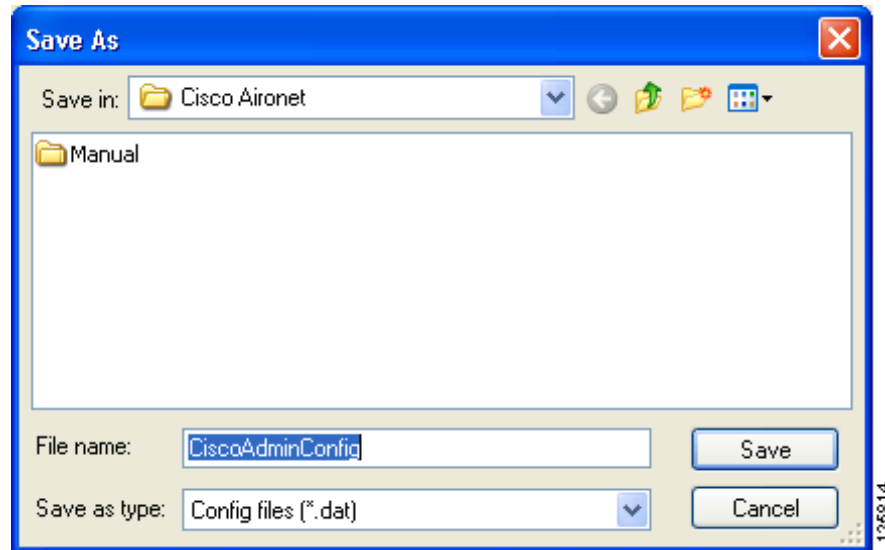
Step 8 Click the **Advanced** tab. Then follow the instructions in [Chapter 5](#) to change any advanced settings for this profile.

Step 9 Click the **Security** tab. Then follow the instructions in [Chapter 5](#) to change any security settings for this profile.

Step 10 (Optional) Repeat Steps 7 through 10 to create additional profiles.

- Step 11** Choose **Save As** from the File drop-down menu to save the configuration file. The Save As window appears (see [Figure 3-4](#)).

Figure 3-4 Save As Window



- Step 12** Use the Save in box to specify where the configuration file is saved.



Note You must save the configuration file to the drive and directory in which the Install Wizard resides. If you save the file to any other location, it is not processed by the Install Wizard.

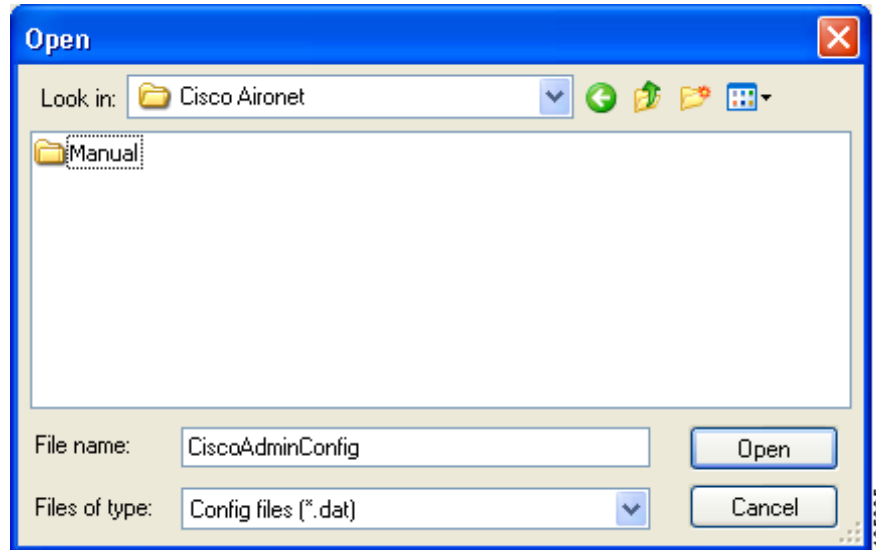
- Step 13** ACAU automatically names the file *CiscoAdminConfig.dat*. You can change the name by entering a new name in the File name field; however, the name must be changed back to *CiscoAdminConfig.dat* before running the Install Wizard. Otherwise, the Install Wizard does not load the configuration file.
- Step 14** Click **Save** to save the configuration file.

Modifying an Existing Configuration File

Follow these steps to modify an existing configuration file.

- Step 1 Open ACAU.
- Step 2 Choose **Open** from the File drop-down menu. The Open window appears (see Figure 3-5).

Figure 3-5 Open Window



- Step 3 Use the Look in box to find the configuration file that you want to modify.



Note The default location is C:\Program Files\Cisco Aironet.

- Step 4 Click **Open**. The ACAU Global Settings window appears with the name of the opened configuration file in the window's title bar.
- Step 5 Modify the global settings as necessary.
- Step 6 Click the **Profile Management** tab.
- Step 7 Click **New** to create a new profile or **Modify** to modify an existing profile.
- Step 8 Configure the profile as desired.
- Step 9 Choose **Save** from the File drop-down menu to resave the configuration file.



Note If you attempt to close ACAU without saving your changes, ACAU informs you that the file has changed and asks if you want to save the changes. You must choose either **Yes** or **No** before ACAU can close.

Managing Profiles

This section explains how to use ACAU's Profile Management tab to manage the profiles that you create. Follow the instructions on the page indicated to perform the desired task:

- Remove a profile, [page 3-7](#)
- Import or export a profile, [page 3-7](#)
- Include a profile in auto profile selection, [page 3-9](#)
- Retrieve a profile from the computer's registry, [page 3-12](#)

Removing a Profile

Follow these steps to remove a profile from your configuration file.

-
- Step 1** Choose **Open** from the File drop-down menu and select the configuration file containing the profile to be removed.
 - Step 2** When the file opens, click the **Profile Management** tab.
 - Step 3** In the profiles list, highlight the profile that you want to remove.
 - Step 4** Click **Remove**. The profile is removed.
 - Step 5** Choose **Save** from the File drop-down menu to save the modified configuration file.
-

Importing and Exporting Profiles

This section provides instructions for importing and exporting profiles. You may want to use the import/export feature for the following reasons:

- To export one or more profiles and use them to set up additional configuration files
- To export profiles and import them directly into ADU
- To import a profile created in and exported from ADU and use it in a configuration file

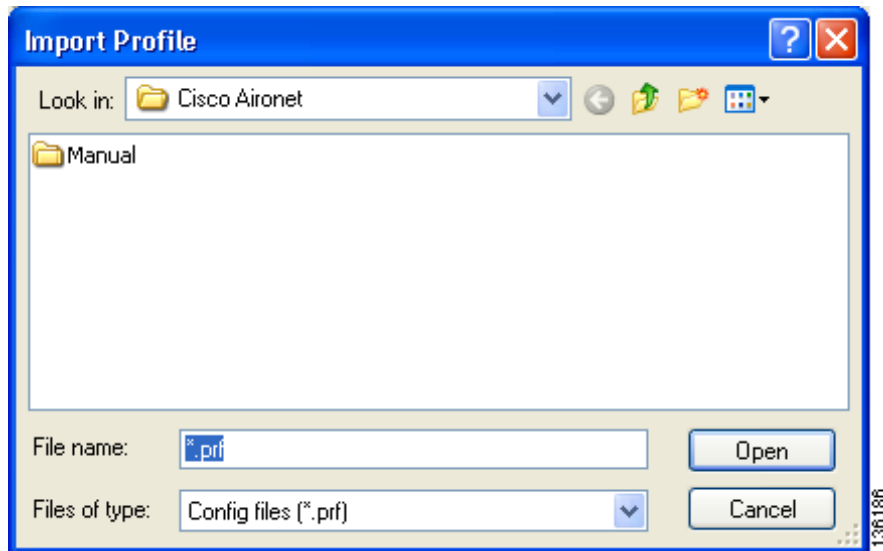
Follow the instructions below to import or export profiles.

Importing a Profile

-
- Step 1** If the profile that you want to import is on a disk, insert the disk into your computer's disk drive.
 - Step 2** Choose **Open** from the File drop-down menu and select the configuration file into which you want to import a profile.
 - Step 3** When the file opens, click the **Profile Management** tab.

Step 4 Click **Import**. The Import Profile window appears (see [Figure 3-6](#)).

Figure 3-6 Import Profile Window



Step 5 In the Look in drop-down box, find the directory where the profile is located.

Step 6 Click the profile so it appears in the File name field at the bottom of the window.

Step 7 Click **Open**. The imported profile appears in the profiles list on the Profile Management window.

Step 8 Choose **Save** from the File drop-down menu to save the modified configuration file.

Exporting a Profile



Note PACs are not exported with EAP-FAST profiles.

Step 1 Insert a disk into your computer's disk drive, if you wish to export a profile to a disk.

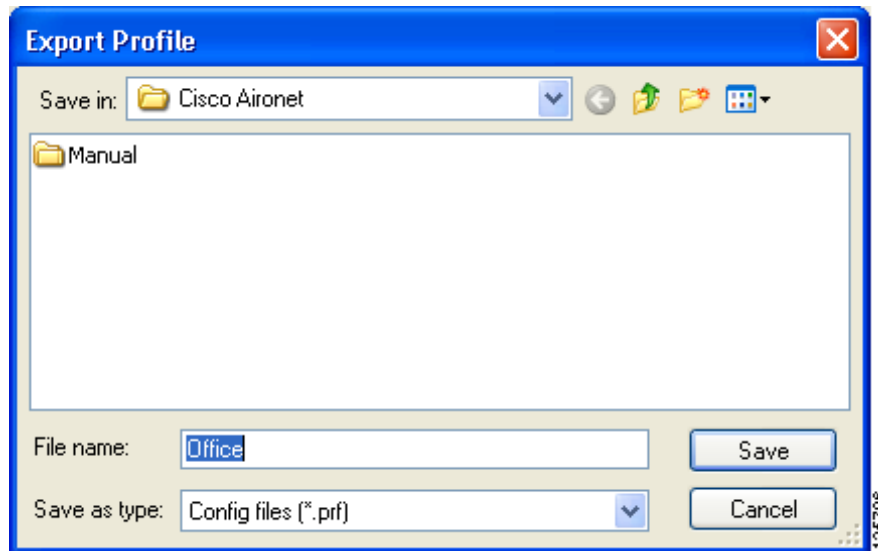
Step 2 Choose **Open** from the File drop-down menu and select the configuration file from which you want to export a profile.

Step 3 When the file opens, click the **Profile Management** tab.

Step 4 In the profiles list, highlight the profile that you want to export.

- Step 5** Click **Export**. The Export Profile window appears (see [Figure 3-7](#)).

Figure 3-7 Export Profile Window



- Step 6** The profile name appears in the File name field. Change the name, if desired.
- Step 7** Choose a different directory (such as your computer's disk drive or a location on the network) from the Save in drop-down box.
- Step 8** Click **Save**. The profile is exported to the specified location.



Note If a profile with the same name already exists, ACAU prompts you to replace it.

- Step 9** Choose **Save** from the File drop-down menu to resave and close the configuration file.

Including a Profile in Auto Profile Selection

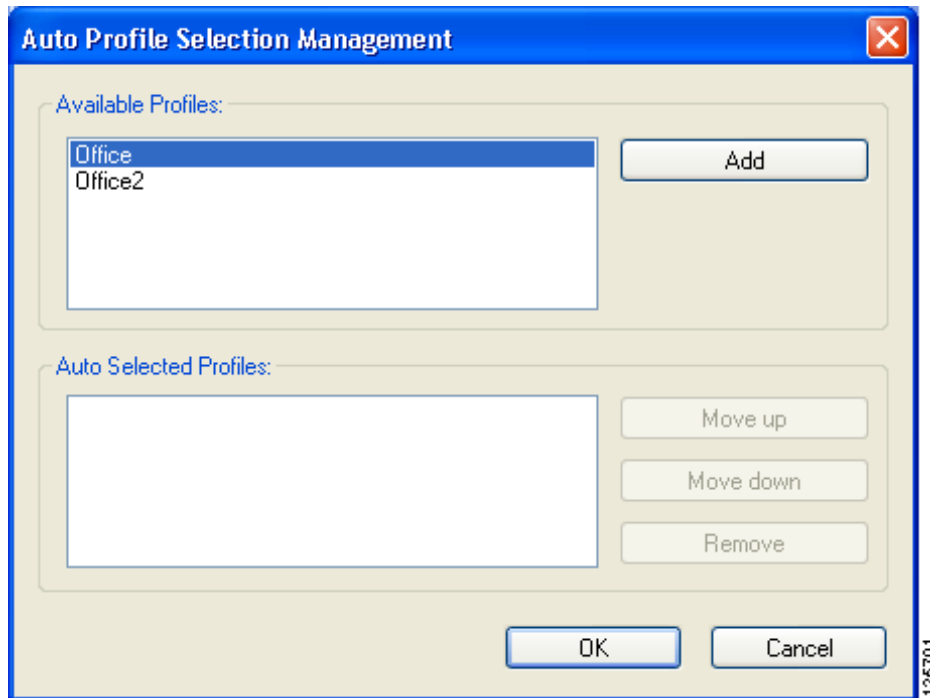
After you have created profiles, you can choose to include them in the profile manager's auto profile selection feature. Then when auto profile selection is enabled, the client adapter automatically selects a profile from the list of profiles that were included in auto profile selection and uses it to establish a connection to the network.

Follow these steps to include profiles in auto profile selection and establish the order in which the profiles are selected for use.

- Step 1** Choose **Open** from the File drop-down menu and select the configuration file containing the profiles that you want to include in auto profile selection.
- Step 2** When the file opens, click the **Profile Management** tab.

Step 3 Click **Order Profiles**. The Auto Profile Selection Management window appears (see [Figure 3-8](#)).

Figure 3-8 Auto Profile Selection Management Window



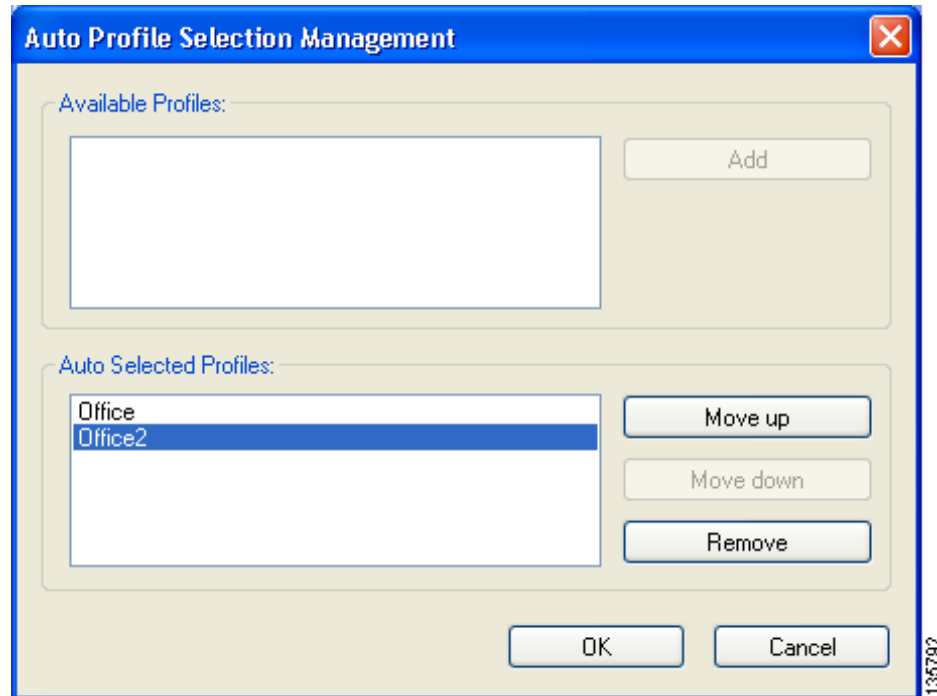
Step 4 All the profiles that you created for this configuration file are listed in the Available Profiles box. Highlight each one you want to include in auto profile selection and click the **Add** button. The profiles appear in the Auto Selected Profiles box.

The following rules apply to auto profile selection:

- You must include at least two profiles in the Auto Selected Profiles box.
- The profiles must specify an SSID; otherwise, they do not appear in the Available Profiles box.
- Profiles cannot specify multiple SSIDs; otherwise, they do not appear in the Available Profiles box.
- Each profile that is included in auto profile selection must have a unique SSID. For example, if Profile 1 and Profile 2 both have “ABCD” as their SSID, then only Profile 1 or Profile 2 (whichever one was created first) appears in the Available Profiles box and can be included in auto profile selection.

- Step 5** Continue to highlight and add profiles as necessary. [Figure 3-9](#) shows how the Auto Selected Profiles box may look.

Figure 3-9 Profiles Included in Auto Profile Selection



- Step 6** The first profile in the Auto Selected Profiles box has the highest priority while the last profile has the lowest priority. To change the order (and priority) of your auto-selected profiles, select the profile that you want to move and click **Move up** or **Move down** to move the profile up or down, respectively.



Note You can remove a profile from the list by highlighting it and clicking **Remove**. The profile returns to the Available Profiles box.

- Step 7** Click **OK** to save your selections and return to the Profile Management window.

- Step 8** Check the **Auto Select Profiles** check box.



Note When this check box is checked, the client adapter scans for an available network. The profile with the highest priority and the same SSID as one of the found networks is the one that is used to connect to the network. If the connection fails, the client adapter tries the next highest priority profile that matches the SSID and so on.

- Step 9** Choose **Save** from the File drop-down menu to save the modified configuration file.

Retrieving a Profile from the Registry

If you created profiles on your computer using a previous version of ACAU or ADU, they are saved in the registry. Follow these steps if you want to retrieve these profiles.

**Note**

Profiles in the current ADU installation can be read from the registry, even if they were not originally created by ACAU.

- Step 1** Choose **Open** from the File drop-down menu and select the configuration file into which you want to include profiles from the registry.
- Step 2** When the file opens, click the **Profile Management** tab.
- Step 3** Choose **Read from registry** from the File drop-down menu. ACAU queries the Windows registry for profiles and reads them into memory.
- Step 4** When a message appears indicating that profiles have been read successfully from the registry, click **OK**. These profiles are added to the list of profiles in the Profile Management window.

**Note**

All profiles read from the registry can be edited in ACAU. You can perform any of the following operations: modify, remove, import, export, or include in auto profile selection.

- Step 5** Choose **Save** from the File drop-down menu to save the profiles read from the registry to the configuration file.
-