



## Configuring Global Settings

---

This chapter describes the Global Settings tab parameters and how to configure them to override the client adapter software installation settings.

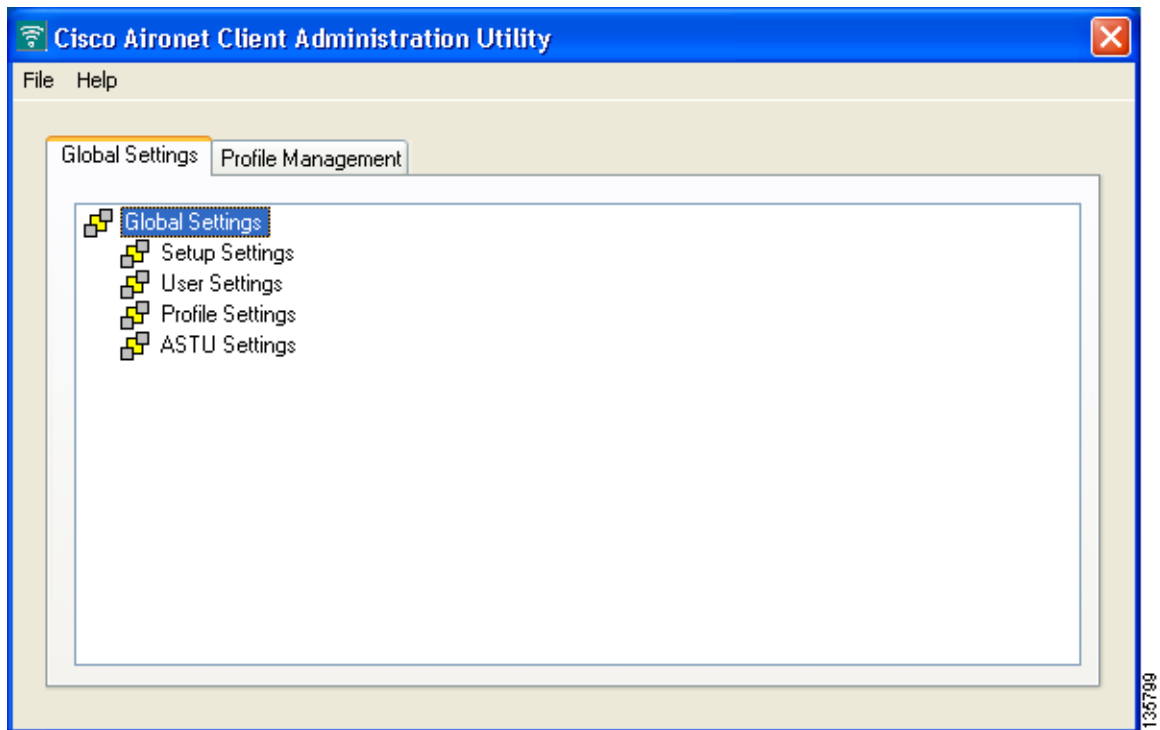
The following topics are covered in this chapter:

- [Overview of the Global Settings Tab, page 4-2](#)
- [Configuring Setup Settings, page 4-5](#)
- [Configuring User Privileges, page 4-9](#)
- [Configuring Profile Settings, page 4-10](#)
- [Configuring ASTU Settings, page 4-11](#)

# Overview of the Global Settings Tab

The Global Settings tab enables you to set parameters that specify how the client adapter software is installed. The settings you choose are saved to a configuration file and invoked when the user uses the Install Wizard to install the client adapter software. The Global Settings tab is located on the ACAU main window (see [Figure 4-1](#)).

**Figure 4-1** Global Settings Tab

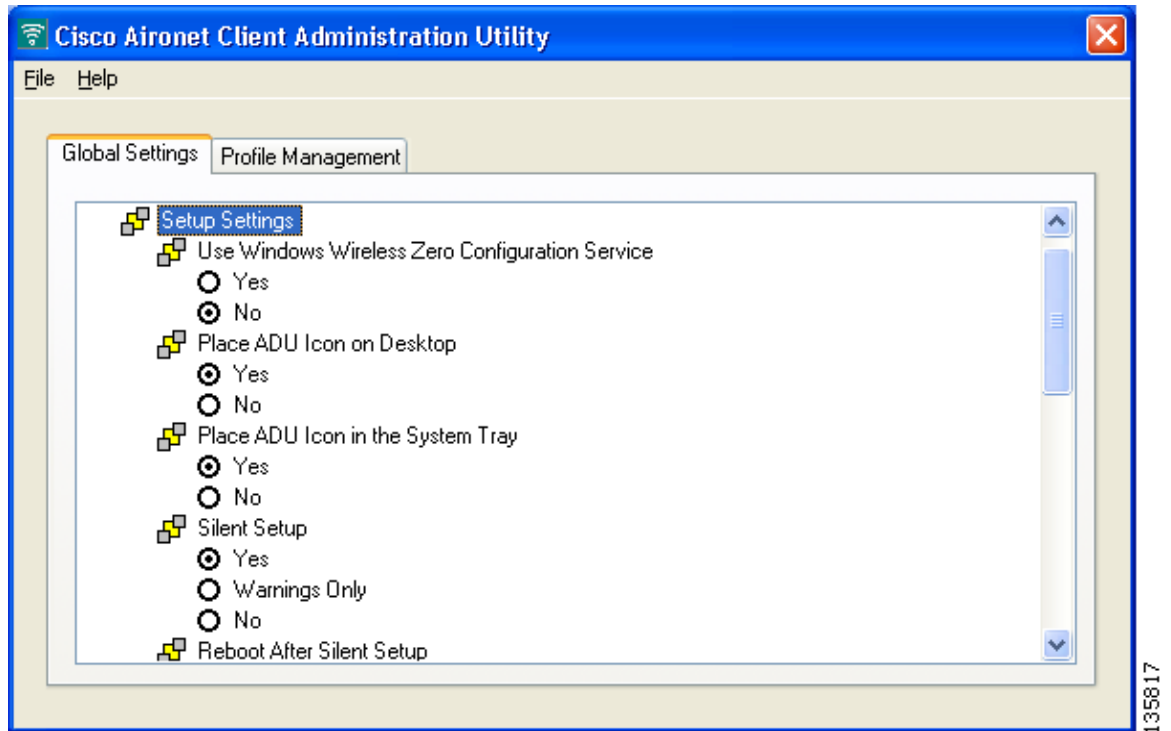


The Global Settings tab enables you to configure four groups of parameters:

- Setup Settings
- User Settings
- Profile Settings
- ASTU Settings

Double-click **Global Settings** to view these groups of parameters. Then double-click each group to see its individual parameters. [Figure 4-2](#) shows the Setup Settings parameters.

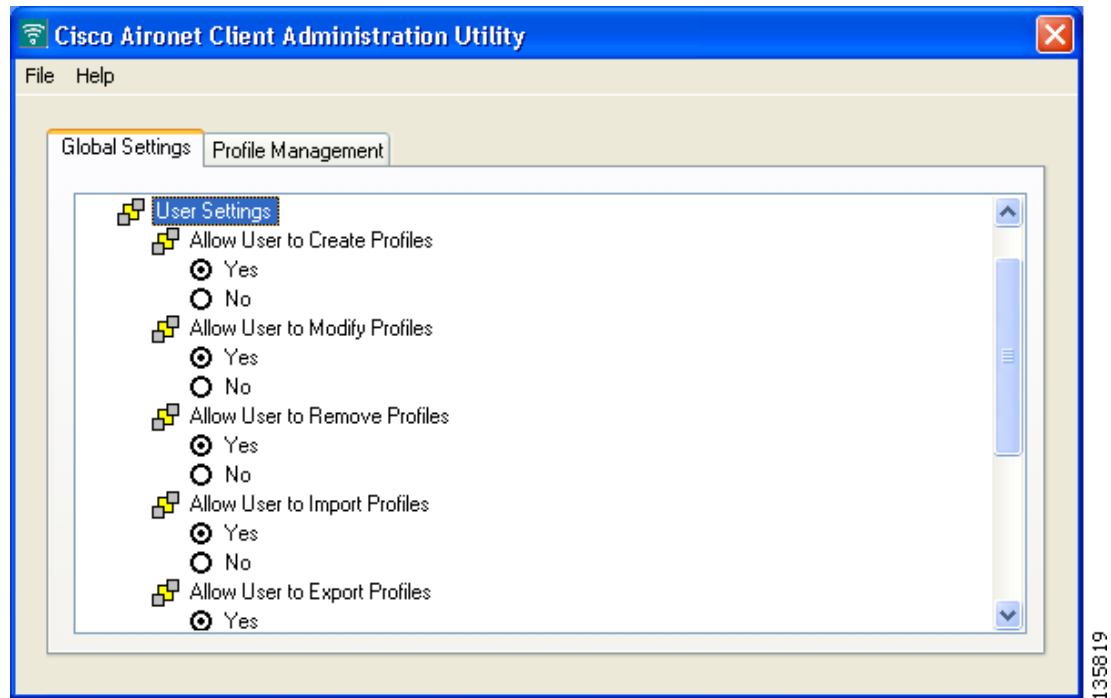
**Figure 4-2** Setup Settings Parameters



Most parameters have two options: *Yes* or *No*. To change the value of a parameter, simply choose the desired option.

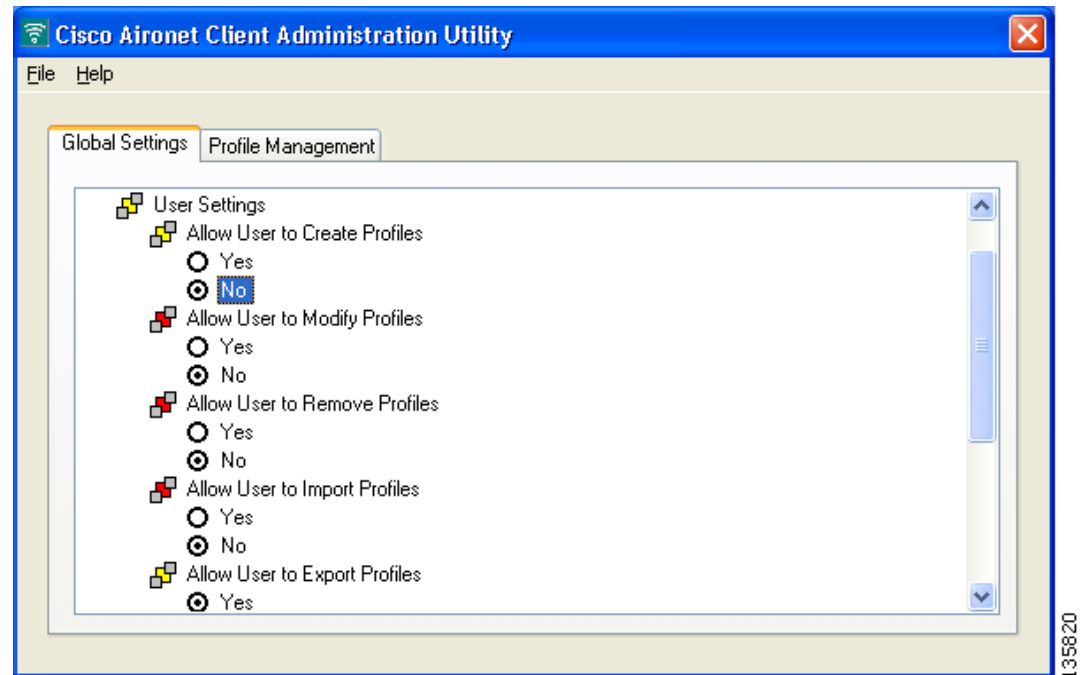
Some parameters are dependent on others. When you change the value of these parameters, the settings of other parameters may change. The icon next to a parameter changes color when its dependency changes. When there are no dependencies and parameter values can be changed, the icon consists of two gray boxes overlapping a yellow box (see [Figure 4-3](#)).

**Figure 4-3** Changeable Parameter Icons



However, when dependencies exist and parameter values cannot be changed, the yellow box in the icon changes to red. For example, if you set the Allow User to Create a Profile parameter to *No*, many of the remaining User Settings parameters are also changed to *No*, and the yellow box in the icon changes to red (see Figure 4-4).

**Figure 4-4** Unchangeable Parameter Icons



## Configuring Setup Settings

The Setup Settings parameters enable you to configure the setup information that the Install Wizard uses to install the client adapter software on a user's computer. Double-click **Setup Settings** to view these parameters. Table 4-1 describes the Setup Settings parameters and lists their default values. Follow the instructions in the table to change any parameters.

**Table 4-1** Setup Settings

Parameter	Description
Use Windows Wireless Zero Configuration Service	Determines whether the user's computer is configured to use the Windows XP Microsoft Wireless Configuration Manager rather than the Aironet Desktop Utility (ADU) to manage the client adapter. <b>Options:</b> Yes or No <b>Default:</b> No
Place ADU Icon on Desktop	Determines whether the ADU icon is placed on the desktop of the user's computer to provide quick access to the utility. <b>Options:</b> Yes or No <b>Default:</b> Yes

Table 4-1 Setup Settings (continued)

Parameter	Description								
Place ADU Icon in the System Tray	<p>Determines whether the ADU icon is placed in the system tray of the user's computer.</p> <p><b>Options:</b> Yes or No</p> <p><b>Default:</b> Yes</p> <p><b>Note</b> When the ADU icon is in the system tray, the user is able to access the Aironet System Tray Utility (ASTU) by right-clicking the icon.</p>								
Silent Setup	<p>Specifies whether user input is required during the installation of the client adapter software.</p> <p><b>Options:</b> Yes, Warnings Only, or No</p> <p><b>Default:</b> Yes</p>								
	<table border="1"> <thead> <tr> <th>Silent setup</th> <th>Description</th> </tr> </thead> <tbody> <tr> <td>Yes</td> <td> <p>The Install Wizard silently installs the client adapter software without any user input.</p> <p><b>Note</b> Be sure that the client adapter is inserted into the user's computer before the client adapter software is installed. Otherwise, the driver installation is incomplete, and the user is not notified.</p> </td> </tr> <tr> <td>Warnings Only</td> <td>The Install Wizard displays any warning messages associated with the installation.</td> </tr> <tr> <td>No</td> <td>The Install Wizard prompts the user to make selections during the installation of the client adapter software.</td> </tr> </tbody> </table>	Silent setup	Description	Yes	<p>The Install Wizard silently installs the client adapter software without any user input.</p> <p><b>Note</b> Be sure that the client adapter is inserted into the user's computer before the client adapter software is installed. Otherwise, the driver installation is incomplete, and the user is not notified.</p>	Warnings Only	The Install Wizard displays any warning messages associated with the installation.	No	The Install Wizard prompts the user to make selections during the installation of the client adapter software.
	Silent setup	Description							
	Yes	<p>The Install Wizard silently installs the client adapter software without any user input.</p> <p><b>Note</b> Be sure that the client adapter is inserted into the user's computer before the client adapter software is installed. Otherwise, the driver installation is incomplete, and the user is not notified.</p>							
Warnings Only	The Install Wizard displays any warning messages associated with the installation.								
No	The Install Wizard prompts the user to make selections during the installation of the client adapter software.								
Warnings Only	The Install Wizard displays any warning messages associated with the installation.								
No	The Install Wizard prompts the user to make selections during the installation of the client adapter software.								

Table 4-1 Setup Settings (continued)

Parameter	Description								
Reboot After Silent Setup	<p>Determines whether the user's computer reboots after the client adapter software is silently installed.</p> <p><b>Options:</b> Prompt for Reboot, Reboot without Prompting, or Do Not Reboot</p> <p><b>Default:</b> Reboot without prompting</p> <table border="1"> <thead> <tr> <th>Reboot after Silent Setup</th> <th>Description</th> </tr> </thead> <tbody> <tr> <td>Prompt for Reboot</td> <td>The Install Wizard prompts the user to reboot the computer after the client adapter software is silently installed.</td> </tr> <tr> <td>Reboot without Prompting</td> <td>The user's computer automatically reboots after the client adapter software is silently installed.</td> </tr> <tr> <td>Do Not Reboot</td> <td>The user's computer does not reboot after the client adapter software is silently installed.</td> </tr> </tbody> </table>	Reboot after Silent Setup	Description	Prompt for Reboot	The Install Wizard prompts the user to reboot the computer after the client adapter software is silently installed.	Reboot without Prompting	The user's computer automatically reboots after the client adapter software is silently installed.	Do Not Reboot	The user's computer does not reboot after the client adapter software is silently installed.
Reboot after Silent Setup	Description								
Prompt for Reboot	The Install Wizard prompts the user to reboot the computer after the client adapter software is silently installed.								
Reboot without Prompting	The user's computer automatically reboots after the client adapter software is silently installed.								
Do Not Reboot	The user's computer does not reboot after the client adapter software is silently installed.								
Installation Type	<p>Specifies whether user input is required when the client adapter software is upgraded or uninstalled.</p> <p><b>Options:</b> Normal, Silent Upgrade, or Silent Uninstall</p> <p><b>Default:</b> Normal</p> <table border="1"> <thead> <tr> <th>Installation type</th> <th>Description</th> </tr> </thead> <tbody> <tr> <td>Normal</td> <td>The Install Wizard prompts the user to choose between uninstalling or upgrading the client adapter software.</td> </tr> <tr> <td>Silent Upgrade</td> <td>The Install Wizard upgrades the client adapter software without any user input.</td> </tr> <tr> <td>Silent Uninstall</td> <td>The Install Wizard uninstalls the client adapter software without any user input.</td> </tr> </tbody> </table>	Installation type	Description	Normal	The Install Wizard prompts the user to choose between uninstalling or upgrading the client adapter software.	Silent Upgrade	The Install Wizard upgrades the client adapter software without any user input.	Silent Uninstall	The Install Wizard uninstalls the client adapter software without any user input.
Installation type	Description								
Normal	The Install Wizard prompts the user to choose between uninstalling or upgrading the client adapter software.								
Silent Upgrade	The Install Wizard upgrades the client adapter software without any user input.								
Silent Uninstall	The Install Wizard uninstalls the client adapter software without any user input.								
Install Site Survey Utility	<p>Determines whether the site survey utility is installed on the user's computer.</p> <p><b>Options:</b> Yes or No</p> <p><b>Default:</b> Yes</p>								

Table 4-1 Setup Settings (continued)

Parameter	Description								
Profile Migration Tool	<p>Determines whether the profile migration tool is installed and run on the user's computer. The tool is designed to migrate profiles used on Cisco Aironet 350 series and CB20A wireless LAN client adapters to profiles that can be used with Cisco Aironet CB21AG and PI21AG client adapters.</p> <p><b>Options:</b> Don't Install, Install, or Install &amp; Run</p> <p><b>Default:</b> Don't Install</p>								
	<table border="1"> <thead> <tr> <th>Profile Migration Tool</th> <th>Description</th> </tr> </thead> <tbody> <tr> <td>Don't Install</td> <td>The Install Wizard does not install the profile migration tool on the user's computer.</td> </tr> <tr> <td>Install</td> <td>The Install Wizard installs the profile migration tool on the user's computer (in the same directory as ADU).</td> </tr> <tr> <td>Install &amp; Run</td> <td> <p>The Install Wizard installs the profile migration tool on the user's computer (in the same directory as ADU) and runs the tool after installation.</p> <p>If you choose this option, you can also enter command line options that let you specify how the tool operates. To do so, click <b>Command Line</b>, enter the desired command(s) on the Profile Migration Tool Parameters window as shown below, and click <b>OK</b>.</p> <div data-bbox="1003 1257 1466 1499" data-label="Image"> </div> <p><b>Note</b> See <a href="#">Appendix D</a> for the list of available command line options and more information on the profile migration tool.</p> </td> </tr> </tbody> </table>	Profile Migration Tool	Description	Don't Install	The Install Wizard does not install the profile migration tool on the user's computer.	Install	The Install Wizard installs the profile migration tool on the user's computer (in the same directory as ADU).	Install & Run	<p>The Install Wizard installs the profile migration tool on the user's computer (in the same directory as ADU) and runs the tool after installation.</p> <p>If you choose this option, you can also enter command line options that let you specify how the tool operates. To do so, click <b>Command Line</b>, enter the desired command(s) on the Profile Migration Tool Parameters window as shown below, and click <b>OK</b>.</p> <div data-bbox="1003 1257 1466 1499" data-label="Image"> </div> <p><b>Note</b> See <a href="#">Appendix D</a> for the list of available command line options and more information on the profile migration tool.</p>
Profile Migration Tool	Description								
Don't Install	The Install Wizard does not install the profile migration tool on the user's computer.								
Install	The Install Wizard installs the profile migration tool on the user's computer (in the same directory as ADU).								
Install & Run	<p>The Install Wizard installs the profile migration tool on the user's computer (in the same directory as ADU) and runs the tool after installation.</p> <p>If you choose this option, you can also enter command line options that let you specify how the tool operates. To do so, click <b>Command Line</b>, enter the desired command(s) on the Profile Migration Tool Parameters window as shown below, and click <b>OK</b>.</p> <div data-bbox="1003 1257 1466 1499" data-label="Image"> </div> <p><b>Note</b> See <a href="#">Appendix D</a> for the list of available command line options and more information on the profile migration tool.</p>								



**Table 4-1 Setup Settings (continued)**

Parameter	Description
Limit Functionality to the System Tray Icon	<p>Determines whether the user is limited to using only ASTU to manage the client adapter.</p> <p><b>Options:</b> Yes or No</p> <p><b>Default:</b> No</p> <p><b>Note</b> If you choose <i>Yes</i>, the user cannot use the ADU icon on the Windows desktop. Only ASTU is available.</p>

## Configuring User Privileges

The User Settings parameters enable you to determine a user's privileges after the client adapter software is installed. [Table 4-2](#) describes the User Settings parameters and lists their default values. Follow the instructions in the table to change any parameters.

**Table 4-2 User Settings**

Setting	Description
Allow User to Create a Profile	<p>Determines whether a user can create a profile using ADU.</p> <p><b>Options:</b> Yes or No</p> <p><b>Default:</b> Yes</p> <p><b>Note</b> If you choose <i>No</i>, all of the User Settings parameters are unavailable, with these exceptions:</p> <ul style="list-style-type: none"> <li>- Allow user to Export a Profile</li> <li>- Prompt the User Before Initiating Automatic PAC Provisioning</li> </ul>
Allow User to Modify a Profile	<p>Determines whether a user can modify a profile using ADU.</p> <p><b>Options:</b> Yes or No</p> <p><b>Default:</b> Yes</p>
Allow User to Remove a Profile	<p>Determines whether a user can remove a profile using ADU.</p> <p><b>Options:</b> Yes or No</p> <p><b>Default:</b> Yes</p> <p><b>Note</b> Only profiles created by the user can be removed.</p>
Allow User to Import a Profile	<p>Determines whether a user can import a profile using ADU.</p> <p><b>Options:</b> Yes or No</p> <p><b>Default:</b> Yes</p>
Allow User to Export a Profile	<p>Determines whether a user can export a profile using ADU.</p> <p><b>Options:</b> Yes or No</p> <p><b>Default:</b> Yes</p>

Table 4-2 User Settings (continued)

Setting	Description
Allow User to Modify Automatic PAC Provisioning in Profiles	<p>Determines whether a user can disable automatic protected access credentials (PAC) provisioning for an EAP-FAST profile.</p> <p><b>Options:</b> Yes or No</p> <p><b>Default:</b> No</p> <p><b>Note</b> Automatic PAC provisioning enables the automatic retrieval of a PAC over the wireless link during EAP-FAST authentication.</p>
Prompt User Before Initiating Automatic PAC Provisioning	<p>Determines whether a user is prompted to automatically provision a PAC for EAP-FAST authentication when a PAC is not found on the user's system.</p> <p><b>Options:</b> Yes or No</p> <p><b>Default:</b> No</p> <p><b>Note</b> If you choose <i>Yes</i>, the user is prompted to automatically provision a PAC whenever a PAC cannot be found. If you choose <i>No</i>, a PAC is provisioned automatically (without prompting the user) whenever a PAC is not found.</p>

## Configuring Profile Settings

The Profile Settings parameters enable you to control how profiles are managed on the user's computer. [Table 4-3](#) describes the Profile Settings parameters and lists their default values. Follow the instructions in the table to change any parameters.

Table 4-3 Profile Settings Parameters

Parameter	Description
Enable Profile Management	<p>Specifies whether the ADU profile management feature is enabled on the user's computer.</p> <p><b>Options:</b> Yes or No</p> <p><b>Default:</b> Yes</p> <p><b>Note</b> If you choose <i>No</i>, the Profile Management tab in ADU will not be visible to the user, but the user can select a profile by right-clicking the ASTU icon and selecting the profile.</p> <p><b>Note</b> If you choose <i>No</i>, all of the User Settings parameters are unavailable, with this exception: Prompt the User Before Initiating Automatic PAC Provisioning.</p>

**Table 4-3** Profile Settings Parameters (continued)

Parameter	Description						
Update Existing Profiles	Determines how a user's existing profiles are affected when the Install Wizard installs new profiles from the ACAU configuration file. <b>Options:</b> Overwrite or Append <b>Default:</b> Overwrite						
	<table border="1"> <thead> <tr> <th>Update existing Profiles</th> <th>Description</th> </tr> </thead> <tbody> <tr> <td>Overwrite</td> <td>All existing profiles are deleted and replaced with new profiles from the ACAU configuration file.</td> </tr> <tr> <td>Append</td> <td>Existing profiles with the same name as those within the ACAU configuration file remain unchanged. All other existing profiles are retained.</td> </tr> </tbody> </table>	Update existing Profiles	Description	Overwrite	All existing profiles are deleted and replaced with new profiles from the ACAU configuration file.	Append	Existing profiles with the same name as those within the ACAU configuration file remain unchanged. All other existing profiles are retained.
	Update existing Profiles	Description					
Overwrite	All existing profiles are deleted and replaced with new profiles from the ACAU configuration file.						
Append	Existing profiles with the same name as those within the ACAU configuration file remain unchanged. All other existing profiles are retained.						
Force Auto Select Profiles	Determines whether profiles are selected automatically in ADU or the user is allowed to manually select profiles. <b>Options:</b> Yes or No <b>Default:</b> No <b>Note</b> If you choose <i>Yes</i> , the user is unable to manually select profiles in ADU. Profiles are selected automatically. In addition, the Activate button on the ADU Profile Management and Available Infrastructure and Ad Hoc Networks windows only creates a new profile, but does not activate the network.						

## Configuring ASTU Settings

The ASTU Settings parameters enable you to configure the Aironet System Tray Utility (ASTU). ASTU is an optional application that provides a small subset of the features available through ADU. Specifically, it enables a user to access status information about the client adapter and perform basic tasks. ASTU is available from an icon in the Windows system tray, making it easily accessible and convenient to use. The icon appears in the system tray only if you set the Place ADU icon in the System Tray parameter to *Yes*.

The ASTU Settings parameters determine which ASTU features are available to the user. [Table 4-4](#) describes the ASTU Settings parameters and lists their default values. Follow the instructions in the table to change any parameters.

**Table 4-4** *ASTU Settings Parameters*

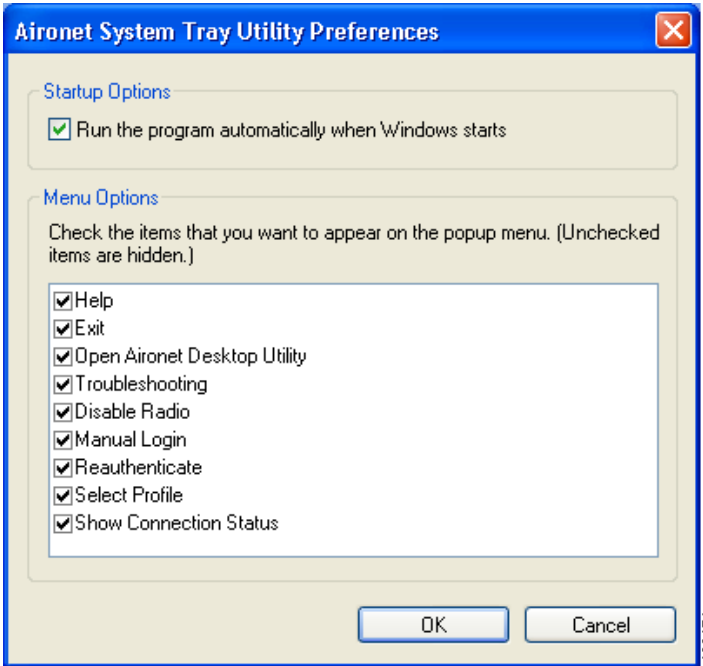
Parameter	Description
Preferences	<p>Determines whether the user can access the Aironet System Tray Utility Preferences window, which enables the user to specify when ADU and ASTU run and choose the options that appear on the ASTU pop-up menu.</p> <p><b>Options:</b> Yes or No</p> <p><b>Default:</b> Yes</p> <p><b>Note</b> If you choose <i>Yes</i>, the Aironet System Tray Utility Preferences window (shown below) appears when the user right-clicks the ADU icon in the system tray and clicks <b>Preferences</b>. If you choose <i>No</i>, the user is unable to open this window.</p> 
Help	<p>Determines whether the user can access online help from ASTU.</p> <p><b>Options:</b> Yes or No</p> <p><b>Default:</b> Yes</p> <p><b>Note</b> If you choose <i>No</i>, online help is still available from the Help drop-down menu in ADU.</p>
Exit	<p>Determines whether the user can exit ADU from ASTU.</p> <p><b>Options:</b> Yes or No</p> <p><b>Default:</b> Yes</p> <p><b>Note</b> If you choose <i>No</i>, the user can still exit ADU by selecting <b>Exit</b> from the ADU Action drop-down menu or clicking the <b>X</b> in the top right corner of any main ADU window.</p>

Table 4-4 ASTU Settings Parameters (continued)

Parameter	Description
Open Aironet Desktop Utility	<p>Determines whether the user can open ADU from ASTU.</p> <p><b>Options:</b> Yes or No</p> <p><b>Default:</b> Yes</p> <p><b>Note</b> If you choose <i>No</i> and the Setup Settings - Place ADU icon on Desktop parameter is set to <i>Yes</i>, the user can open ADU from an icon on the Windows desktop.</p>
Troubleshooting	<p>Determines whether the user can run troubleshooting tests from ASTU.</p> <p><b>Options:</b> Yes or No</p> <p><b>Default:</b> Yes</p> <p><b>Note</b> If you choose <i>No</i>, the user can still run troubleshooting tests from ADU by selecting <b>Troubleshooting</b> from either the Action drop-down menu or the Diagnostics tab.</p>
Disable Radio	<p>Determines whether the user can disable the client adapter's radio from ASTU.</p> <p><b>Options:</b> Yes or No</p> <p><b>Default:</b> Yes</p> <p><b>Note</b> If you choose <i>No</i>, the radio can still be disabled by selecting <b>Disable Radio</b> from the ADU Action drop-down menu.</p>
Manual Login	<p>Determines whether the user can use ASTU to manually invoke the authentication process for a profile that is configured to use a manually prompted LEAP or EAP-FAST username and password.</p> <p><b>Options:</b> Yes or No</p> <p><b>Default:</b> Yes</p> <p><b>Note</b> Refer to the <a href="#">“Setting Security Parameters” section on page 5-14</a> for information on setting a manual LEAP or EAP-FAST profile and for details on the authentication process.</p>
Reauthenticate	<p>Determines whether the user can use ASTU to force the client adapter to try to reauthenticate using the username and password of the active profile.</p> <p><b>Options:</b> Yes or No</p> <p><b>Default:</b> Yes</p> <p><b>Note</b> This feature is available only for EAP-enabled profiles.</p> <p><b>Note</b> If you choose <i>No</i>, the user can still reauthenticate by selecting <b>Reauthenticate</b> from the ADU Action drop-down menu.</p>

Table 4-4 ASTU Settings Parameters (continued)

Parameter	Description
Select Profile	<p data-bbox="716 317 1430 344">Determines whether the user can use ASTU to activate a profile.</p> <p data-bbox="716 363 938 390"><b>Options:</b> Yes or No</p> <p data-bbox="716 409 867 436"><b>Default:</b> Yes</p> <p data-bbox="716 455 1479 638"><b>Note</b> When the user selects a profile in ASTU, the client adapter attempts to establish a connection to an access point using the parameters that were configured for that profile. If the client adapter cannot associate to the access point or loses association while using the selected profile, the adapter does not attempt to associate using another profile.</p> <p data-bbox="716 667 1479 730"><b>Note</b> If you choose <i>No</i>, the user can still activate profiles using the ADU profile manager.</p>
Show Connection Status	<p data-bbox="716 747 1422 804">Determines whether the user can display the ASTU Connection Status window.</p> <p data-bbox="716 823 938 850"><b>Options:</b> Yes or No</p> <p data-bbox="716 869 867 896"><b>Default:</b> Yes</p> <p data-bbox="716 915 1479 1003"><b>Note</b> If you choose <i>No</i>, the ASTU Connection Status window is not available to the user. However, status information is available from the ADU Current Status and Advanced Status windows.</p>