



Using the ACAU

This chapter describes how to use the ACAU. The following topics are discussed in the chapter.

- [Creating a New Configuration File, page 2-2](#)
- [Modifying an Existing Configuration or Profile, page 2-4](#)
- [Removing a Profile, page 2-5](#)
- [Importing and Exporting Profiles, page 2-5](#)
- [Including a Profile in Auto Profile Selection, page 2-7](#)
- [Retrieving a File From the Registry, page 2-8](#)

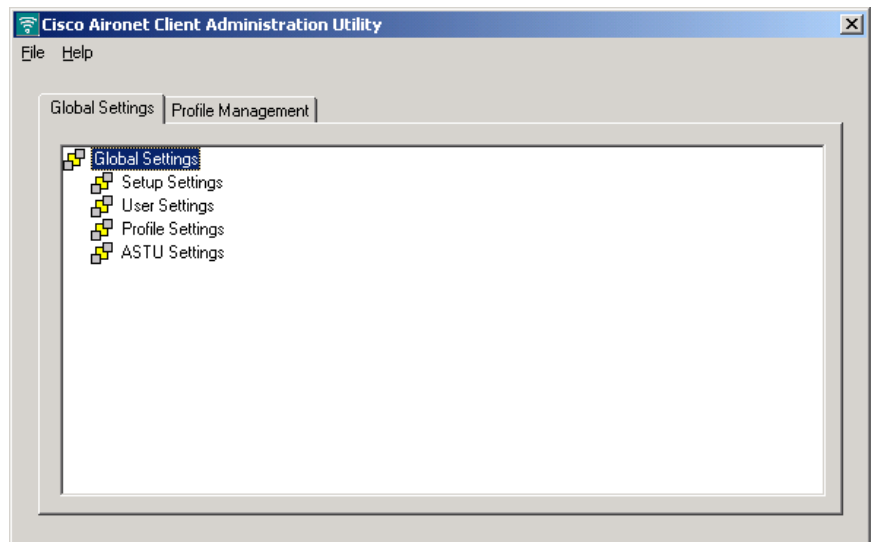
Creating a New Configuration File

The configuration file is the file you create that provides installation and profile information the install wizard uses to control the installation of the utilities, driver, firmware, and profiles for the CB21AG PC-Cardbus and PI21AG PCI adapters. You create a new configuration by opening ACAU and selecting **New** from the File drop-down menu. The file contains two parts: global settings and profiles. Global settings are administrative parameters that determine how the ADU is installed on a user's computer. You can override the default parameters using the Global Settings tab. You create and configure the user's profiles using the Profile Management tab. The Profile Management tab enables you to name the profile and determine its general, security, and advanced characteristics. Both parts are saved in the configuration file, *ciscoadminconfig.dat*.

Follow these steps to create a new *ciscoadminconfig.dat* file:

- Step 1** Open ACAU. The Cisco Aironet Client Administration Utility window appears (Figure 2-1).

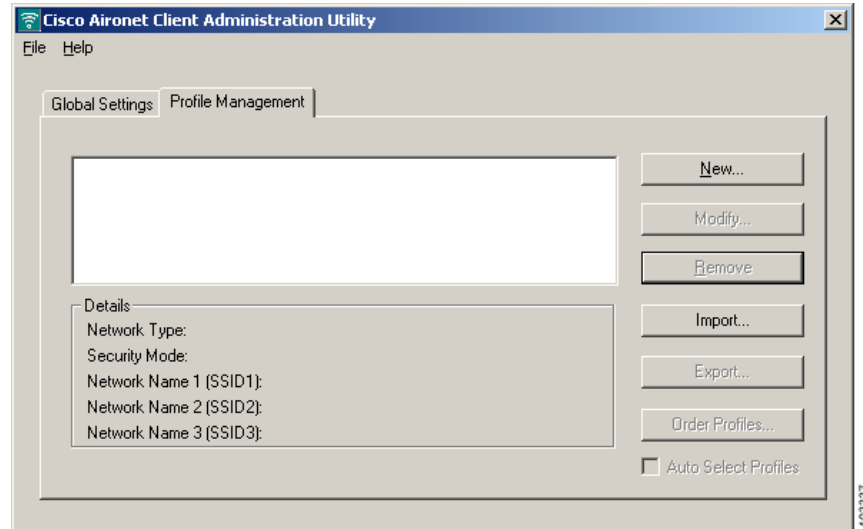
Figure 2-1 Cisco Aironet Client Administration Window



- Step 2** From the File drop-down menu, click **New**. ACAU names the file *New* and displays it in the window title bar inside brackets.
- Step 3** Expand the Global Settings components and make any changes to the parameters within them.
- For detailed information about setup settings, go to the [“Configuring Setup Settings”](#) section on page 3-4.
 - For detailed information about user settings, go to the [“Configuring User Privileges”](#) section on page 3-6.
 - For detailed information about profile settings, go to the [“Configuring Profile Settings”](#) section on page 3-7.
 - For detailed information about ASTU settings, go to the [“Configuring ASTU Settings”](#) section on page 3-8.

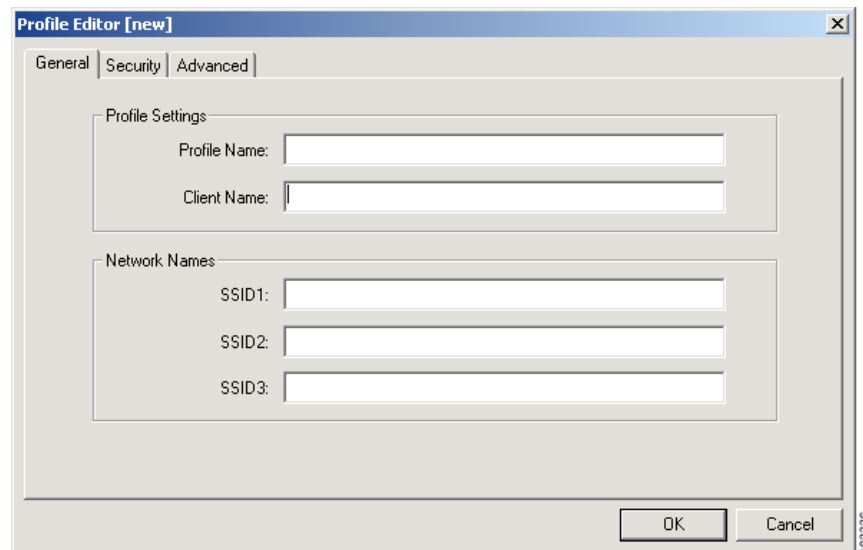
- Step 4** Click the **Profile Management** tab to access the profile components and parameters. The Profile Manager window appears (Figure 2-2).

Figure 2-2 Profile Management Window



- Step 5** Click **New**. The Profile Editor General window appears (Figure 2-3).

Figure 2-3 Profile Editor General Window



- Step 6** Enter a profile name and SSID(s).
- For detailed information about the General settings page, go to the [“Setting General Parameters” section on page 4-3](#).
- Step 7** Click the **Advanced** tab to open the Advanced Settings page.
- For detailed information about advanced settings, go to the [“Setting Advanced Parameters” section on page 4-5](#).

Step 8 Click the **Security** tab to access the security settings.

- For detailed information about security settings, go to the [“Setting Security Parameters” section on page 4-13](#).



Note Repeat steps 5 through 8 to create additional profiles. You can create up to 16 profiles.

Step 9 Save the configuration file.



Note When you use ACAU for the first time and save the file using the **Save** option in the File drop-down menu, ACAU automatically names the file *ciscoadminconfig.dat* and prompts you to save it in the *Cisco Aironet* folder.



Note The configuration file you created must reside in the location on the user’s computer in which the client’s install wizard (*setup.exe*) resides. If the file is saved to any other location it is not processed by the install wizard.



Note After you have saved the file the first time, subsequent saves automatically overwrite the existing file to the path and directory you specified when you saved it the first time. To change either the filename or the path, you must use the **Save As** command.

Modifying an Existing Configuration or Profile

You can modify an existing configuration file or profile. Follow these steps:

Step 1 Open ACAU.

Step 2 From the **File** drop-down menu, click **Open**.

Step 3 Open the *ciscoadminconfig.dat* file.

Step 4 Modify the global or profile settings.

Step 5 Save the file.



Note You can use the **Save** or **Save As** command to save the configuration file. If the file already exists and you use the **Save As** command, ACAU prompts whether or not you want to replace it.



Note If you close ACAU without saving any changes you made, ACAU informs you that the file has changed and asks you whether or not you want to save the changes. You must select either **Yes** or **No** before ACAU can close.

Removing a Profile

Follow these steps to remove a profile from your configuration file.

-
- Step 1** Open ACAU.
 - Step 2** Retrieve the *ciscoadminconfig.dat* file.
 - Step 3** Click the **Profile Management** tab. The Profile Management window appears.
 - Step 4** In the profiles list, highlight the profile that you want to remove.
 - Step 5** Click **Remove**. The profile is removed.
 - Step 6** In the File drop-down menu, click **Save** or **Save As** to save the modified configuration file.
-

Importing and Exporting Profiles

You may want to use the import/export feature for the following reasons:

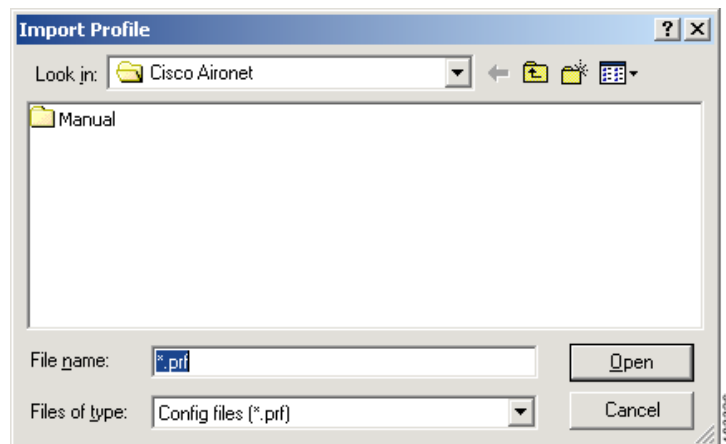
- To export one or more profiles and use them to set up additional configuration files
- To export profiles and import them directly into the ADU
- To import a profile created and exported from the ADU and use it in a configuration file

Follow the steps in the corresponding section below to import or export profiles.

Importing a Profile

-
- Step 1** If the profile that you want to import is on a floppy disk, insert the disk into your computer's floppy drive.
 - Step 2** Open ACAU and click the **Profile Management** tab. The Profile Management window appears.
 - Step 3** Click **Import**. The Import Profile window appears (see [Figure 2-4](#)).

Figure 2-4 Import Profile Window

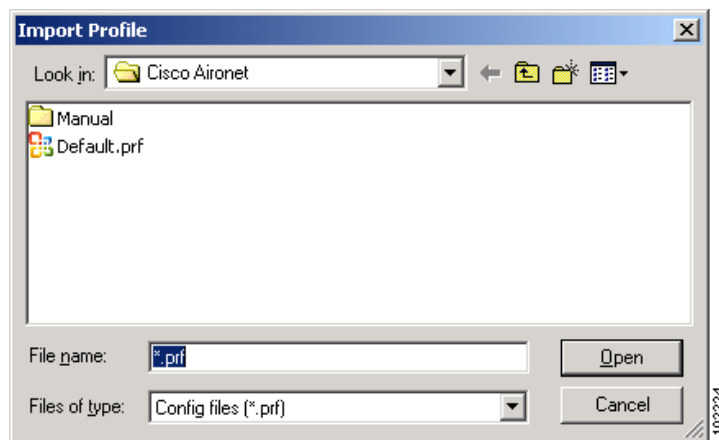


- Step 4** In the Look in drop-down box, find the directory where the profile is located.
- Step 5** Click the profile so it appears in the File name box at the bottom of the window.
- Step 6** Click **Open**. The imported profile appears in the profiles list on the ACAU Profile Management window.
- Step 7** Edit the file as necessary.

Exporting a Profile

- Step 1** Insert a blank floppy disk into your computer's floppy drive, if you wish to export a profile to a floppy disk. You can also save the profile to any location, either local or network based.
- Step 2** Open ACAU and click the **Profile Management** tab. The Profile Management window appears.
- Step 3** In the profiles list, highlight the profile that you want to export.
- Step 4** Click **Export**. The Export Profile window appears (see [Figure 2-5](#)).

Figure 2-5 Export Profile Window



- Step 5** Enter a name for the profile in the File name box.
- Step 6** Select a different directory (such as your computer's floppy disk drive or a location on the network) from the Save in drop-down box.
- Step 7** Click **Save**. The profile is exported to the specified location.



Note If the file already exists and you did not change the name or path of the profile you are exporting, ACAU prompts you whether or not to replace it.

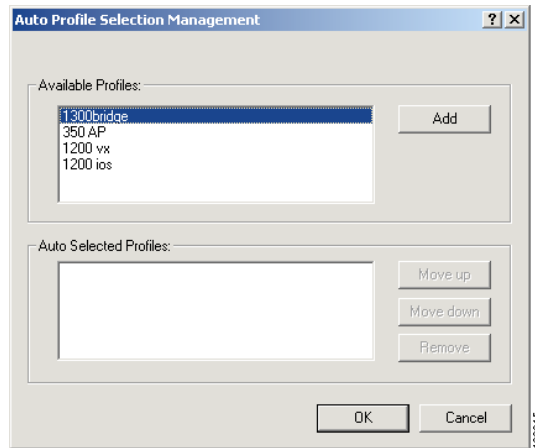
Including a Profile in Auto Profile Selection

After you have created profiles, you can choose to include them in the profile manager's auto profile selection feature. Then when auto profile selection is enabled, the client adapter automatically selects a profile from the list of profiles that were included in auto profile selection and uses it to establish a connection to the network.

Follow these steps to include profiles in auto profile selection and establish the order in which the profiles will be selected for use.

- Step 1** Open ACAU and click the **Profile Management** tab. The Profile Management window appears.
- Step 2** Click **Order Profiles**. The Auto Profile Selection Management window appears (see [Figure 2-6](#)).

Figure 2-6 Auto Profile Selection Management Window



- Step 3** All the profiles you created are listed in the Available Profiles box. Select each one you want to include in auto profile selection and click the **Add** button. The profiles appear in the Auto Selected Profiles box.

The following rules apply to auto profile selection:

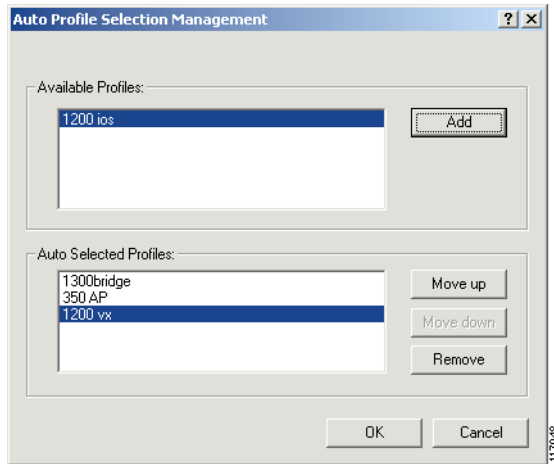
- You must include at least two profiles in the Auto Selected Profiles box.
- The profiles must specify an SSID; otherwise, they do not appear in the Available Profiles box.
- Profiles cannot specify multiple SSIDs; otherwise, they do not appear in the Available Profiles box.
- Each profile that is included in the auto profile selection must have a unique SSID. For Example, if Profile 1 and Profile 2 both have “ABCD” as their SSID, then only Profile 1 or Profile 2 (whichever one was created first) appears in the Available Profiles box and can be included in auto profile selection.



Note If you want to remove a profile from auto profile selection, select the profile in the Auto Selected Profile box and click **Remove**. The profile is removed from the Auto Selected Profiles box.

- Step 4** Continue to highlight and add profiles as necessary. The Auto Selected Profiles Pane looks similar to [Figure 2-7](#).

Figure 2-7 Profiles Selected



- Step 5** Prioritize the auto selected profiles by highlighting a profile and then selecting **Move up** or **Move down** as appropriate.



Note You can remove a profile from the list by highlighting it and clicking **Remove**. The profile is returned to the Available Profiles pane.

- Step 6** The first profile in the Auto Selected Profiles box has the highest priority while the last profile has the lowest priority. To change the order (and priority) of your auto-selected profiles, select the profile that you want to move and click **Move up** or **Move down** to move the profile up or down, respectively.
- Step 7** Click **OK** to save your selections and return to the Profile Management window.
- Step 8** Select **Auto Select Profiles**.
- Step 9** Save the modified configuration file.

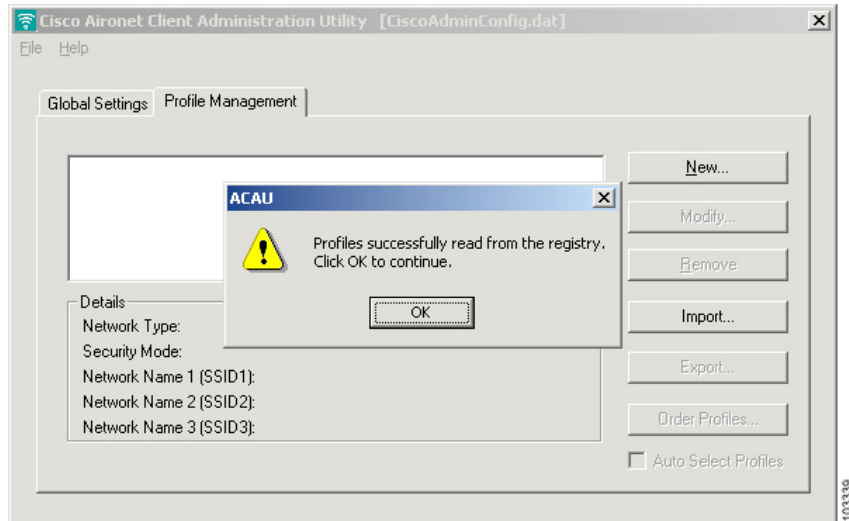
When Auto Select Profiles is enabled, the client adapter scans for an available network. The profile with the highest priority and the same SSID as the one of the found networks is the one that is used to connect to the network. If the connection fails, the client adapter tries the next highest priority that matches the SSID and so on.

Retrieving a File From the Registry

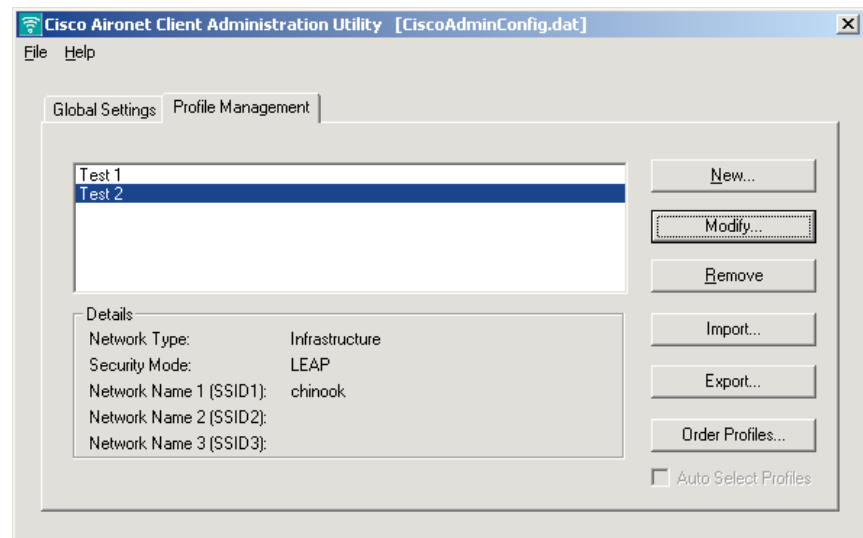
If you created profiles on your PC using a previous version of ACAU or ADU, they are saved in the registry. You can retrieve those profiles using ACAU or ADU by selecting Read from registry from the File drop-down menu. When you select this option, ACAU queries the Windows registry for profiles, reads them into memory, and displays the pop-up message shown in [Figure 2-8](#).



Note The Read from Registry feature reads profiles that exist in the current installation of the Cisco Aironet Desktop Utility, which may not have been created by this or any other ACAU.

Figure 2-8 ACAU Read from Registry Message

After you click **OK**, the profiles appear in the Profile Manager field, similar to those shown in [Figure 2-9](#).

Figure 2-9 Profiles Read from the Registry

All profiles read from the registry can be edited in ACAU. You can perform any of the following operations:

- Modify
- Remove
- Import
- Export
- Order

Profiles read from the registry can be saved to the *ciscocadminconfig.dat* file by selecting **Save** or **Save As** from the File drop-down menu. In either case, you can save the existing configuration file or not. If you choose to save it, ACAU overwrites the file.