



Using the Profile Manager

This chapter explains how to use ACU's profile manager feature to create and manage profiles for your client adapter.

The following topics are covered in this chapter:

- [Overview of Profile Manager, page 4-2](#)
- [Opening Profile Manager, page 4-2](#)
- [Creating a New Profile, page 4-3](#)
- [Selecting the Active Profile, page 4-3](#)
- [Modifying a Profile, page 4-4](#)

Overview of Profile Manager

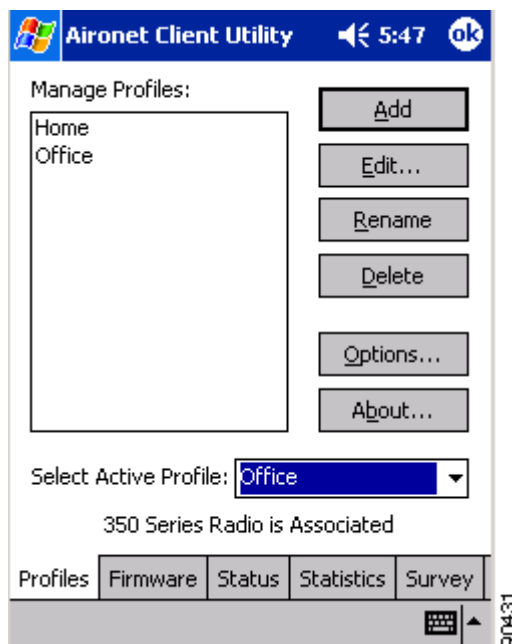
ACU's profile manager feature allows you to create and manage up to 16 *profiles* (or named groupings of saved configuration parameters) for your client adapter. These profiles enable you to use your client adapter in different locations, each of which requires different configuration settings. For example, you may want to set up profiles for using your client adapter at the office, at home, and in public areas such as airports. Once the profiles are created, you can easily switch between them without having to reconfigure your client adapter each time you enter a new location.

Profiles are stored in the registry of the Windows CE device. They are lost only if the Windows CE device is defaulted (hard reset) or if both the primary and backup batteries run out of power.

Opening Profile Manager

To open ACU's profile manager, double-tap the ACU icon on your desktop or tap **Start > Programs > Cisco > ACU**. The Profiles screen appears (see [Figure 4-1](#)).

Figure 4-1 Profiles Screen



Profile manager enables you to perform the following tasks related to the management of profiles:

- Create a new profile, [page 4-3](#)
- Select the active profile, [page 4-3](#)
- Edit a profile, [page 4-4](#)
- Rename a profile, [page 4-4](#)
- Delete a profile, [page 4-5](#)

Follow the instructions on the page indicated for the task you want to perform.

Creating a New Profile

Follow these steps to create a new profile.

Step 1 Tap the **Add** button on the Profiles screen. A new profile named Profile x (where x is the number of the profile) appears in the Manage Profiles box.

Step 2 To change the profile name from Profile x to something of your own choosing (for example, Office, Home, etc.), enter the name now.



Note You can enter up to 80 characters, but due to limited screen size, long profile names may not be completely displayed.

Step 3 Perform one of the following:

- If you want this profile to use the default values, tap on a blank part of the screen. The profile is added to the list of profiles in the Manage Profiles box.
- If you want to change any of the configuration parameter settings, tap the **Edit** button. The Properties screen appears with the name of the profile in quotation marks. Follow the instructions in [Chapter 5](#) to change any of the configuration parameters for this profile.

Step 4 To create another profile, repeat the previous steps.

Selecting the Active Profile

Follow these steps to specify the profile that the client adapter is to use.



Note

Because EAP-TLS and PEAP authentication are not enabled in ACU, you cannot switch between these authentication types simply by switching profiles in ACU. For PPC 2002 devices, you can create a profile in ACU that uses host-based EAP, but you must enable the specific authentication type in the Authentication Manager. In addition, only one authentication type can be set at a time; therefore, if you have more than one profile in ACU that uses host-based EAP and you want to use another authentication type, you must change the authentication type in the Authentication Manager after switching profiles in ACU. For PPC 2003 devices, you must select <External Settings> as the active profile in ACU and then configure your client adapter through Windows CE .NET.

Step 1 Go to the Profiles screen (see [Figure 4-1](#)).

Step 2 From the Select Active Profile drop-down menu, choose the profile that you want your client adapter to use to attempt to establish a connection to an access point.



Note The <External Settings> profile option on Windows CE .NET devices disables ACU profiles and enables the operating system or an application other than ACU to configure the client adapter. You must choose this option if you want to configure your card through the operating system but use ACU's diagnostic tools. Refer to [Appendix E](#) for information on configuring your client adapter through Windows CE .NET.

The client adapter immediately starts using the profile that you select. If the client adapter cannot associate to an access point or loses association while using the selected profile, the adapter does not attempt to associate using another profile. To associate, you must select a different profile.

Modifying a Profile

This section provides instructions for modifying an existing profile. Follow the steps in the corresponding section below to edit, rename, or delete a profile.

Editing a Profile

-
- Step 1** Go to the Profiles screen (see [Figure 4-1](#)).
 - Step 2** From the Manage Profiles box, select the profile that you want to edit and tap the **Edit** button or double-tap the profile. The Properties screen appears with the name of the profile in quotation marks.
 - Step 3** Follow the instructions in [Chapter 5](#) to change any of the configuration parameters for this profile.
-

Renaming a Profile

-
- Step 1** Go to the Profiles screen (see [Figure 4-1](#)).
 - Step 2** From the Manage Profiles box, select the profile that you want to rename and tap the **Rename** button or tap the profile twice (pausing longer than for a double-tap). The profile becomes highlighted.
 - Step 3** Enter a new name for the profile.



Note You can enter up to 80 characters, but due to limited screen size, long profile names may not be completely displayed.

- Step 4** Tap on a blank part of the screen to save your change. The profile is renamed and added to the list of profiles.
-

Deleting a Profile

-
- Step 1** Go to the Profiles screen (see [Figure 4-1](#)).
- Step 2** From the Manage Profiles box, select the profile that you want to delete.



Note You cannot delete the active profile.

- Step 3** Tap the **Delete** button.
- Step 4** When prompted to confirm your decision, tap **Yes**. The profile is deleted.
-

