



Secondary RAT Usage During GnGp Handover

- [Revision History, on page 1](#)
- [Feature Description, on page 1](#)
- [Configuring Secondary RAT Usage during GnGp Handover, on page 3](#)

Revision History

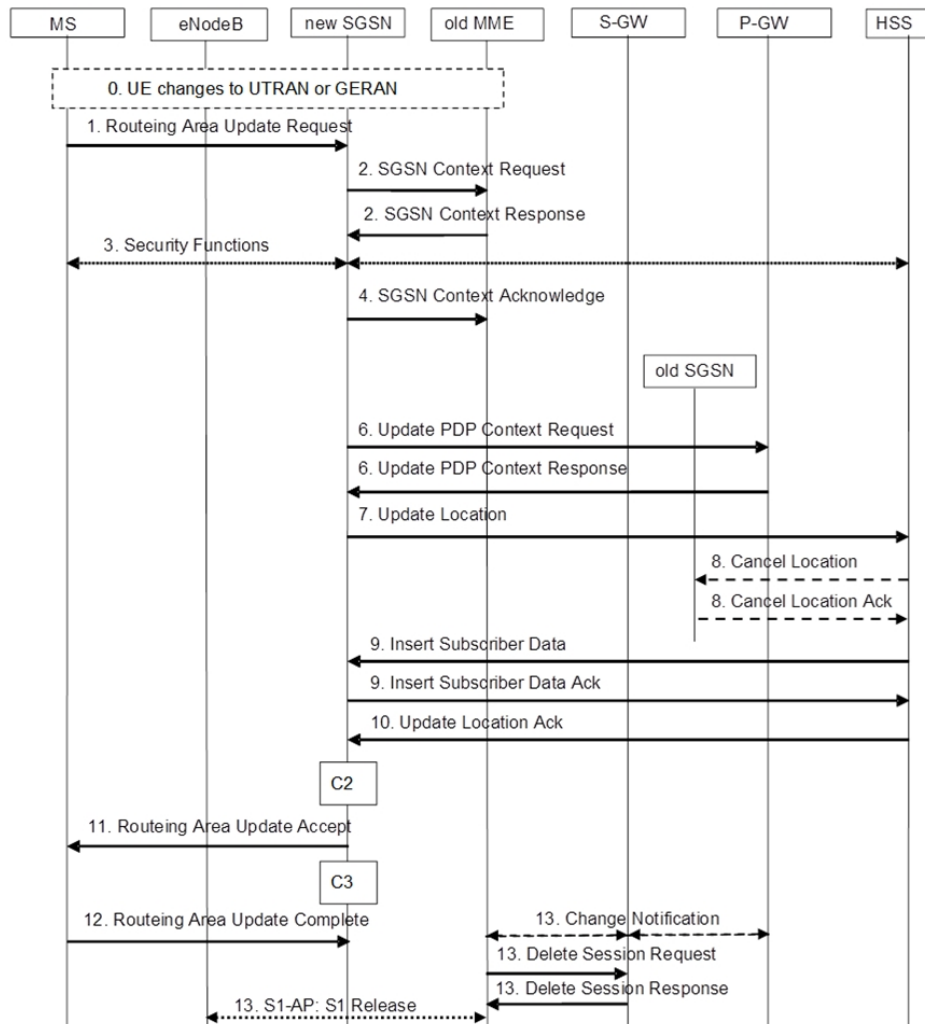


Note Revision history details are not provided for features introduced before release 21.24.

Revision Details	Release
First introduced	Pre 21.24

Feature Description

The feature supports the Secondary RAT Usage IE reported in change notification request during 4G to 3G handover (GnGp). The functionality mentioned in Step 13 of the following call flow is added as part of this feature. The usage is reported in next CDR generation.



IMSI Not Known

If there's no context found for IMSI specified in Secondary RAT Usage IE of change notification request message, it returns the change notification response with cause value "IMSI/IMEI not known".

Limitation

The following are the known limitations of this feature:

- This feature supports only handling of the Secondary RAT Usage IE.
- As 3G releases dedicated bearer during 4G to 3G handover in CUPS, it ignores the Secondary RAT Usage for dedicated bearer reported after release of the same.

Configuring Secondary RAT Usage during GnGp Handover

This sections provides information about the CLI commands available in support of the feature.

Enabling Secondary RAT Data Usage Report

Use the following configuration to enable Secondary RAT Data Usage Report:

```
configure
context context_name
  pgw-service service_name
    dcnr
  end
```



Note The GGSN service associated with P-GW service must have the DCNR enabled using this configuration.
