



# Resource Management

- [Feature Summary and Revision History, on page 1](#)
- [Feature Description, on page 1](#)

## Feature Summary and Revision History

### Summary Data

*Table 1: Feature Summary*

Applicable Product(s) or Functional Area	SMF
Applicable Platform(s)	SMI
Feature Default Setting	Enabled – Always-on
Related Changes in this Release	Not Applicable
Related Documentation	Not Applicable

### Revision History

*Table 2: Revision History*

Revision Details	Release
First introduced.	Pre-2020.02.0

## Feature Description

The UE IP address and ID allocation and management (resource management) feature is used by the SMF service and supported by the NodeMgr.

The Master NodeMgr initializes the following in Redis-DB:

- IP pools for all DNN profiles
- Running counter for ID
- Free list for ID

The NodeMgr hosts the resource management server functionality and exposes the APIs for:

- IP allocation and management
  - IP allocation
  - IP release
  - IP reallocation (release the current IP and allocate new IP for UE)
- ID allocation and management
  - ID allocation
  - ID release
  - ID reallocation (release the current ID and allocate new ID)

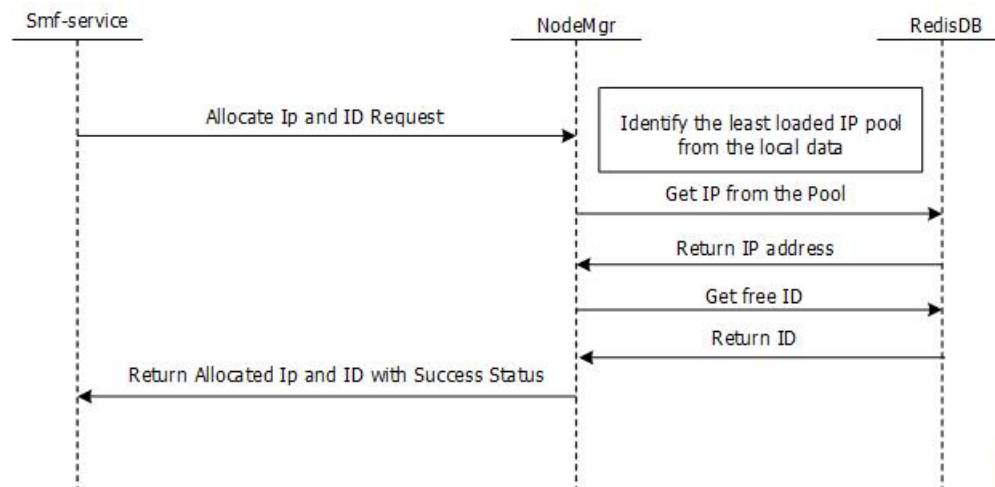
The SMF service runs the resource management client to use the Rmgr services.

## Call Flows

### IP and ID Allocation

The following call flow illustrates the IP and ID allocation.

**Figure 1: IP and ID Allocation Call Flow**



### IP and ID Deallocation

The following call flow illustrates the IP and ID deallocation.

Figure 2: IP and ID Deallocation Call Flow

