



UPF Selection Support

- [Feature Summary and Revision History, on page 1](#)
- [Feature Description, on page 2](#)
- [UPF Selection using DNN and DCNR Support, on page 2](#)
- [UPF Selection using Location Support, on page 6](#)
- [Combined UPF Selection for cnSGW-C and SMF, on page 10](#)
- [UPF Selection OAM Support, on page 22](#)

Feature Summary and Revision History

Summary Data

Table 1: Summary Data

Applicable Product(s) or Functional Area	cnSGW-C
Applicable Platform(s)	SMI
Feature Default Setting	<p>UPF Selection using DCNR Support: Disabled – Configuration required to enable</p> <p>UPF Selection using DNN Support: Enabled – Always-on</p> <p>UPF Selection using Location Support: Disabled – Configuration required to enable</p> <p>Combined UPF Selection for cnSGW-C and SMF: Disabled – Configuration required to enable</p>
Related Documentation	Not Applicable

Revision History

Table 2: Revision History

Revision Details	Release
Added support for UPF selection using Location. Added support for Combined UPF selection for cnSGW-C and SMF.	2021.02.0
First introduced.	2021.01.0

Feature Description

This feature describes the following UPF selection methods.

- DNN and DCNR
- Location support
- cnSGW-C and SMF to select same UPF instance

UPF Selection using DNN and DCNR Support

Feature Description

The following are the three UPF selection methods:

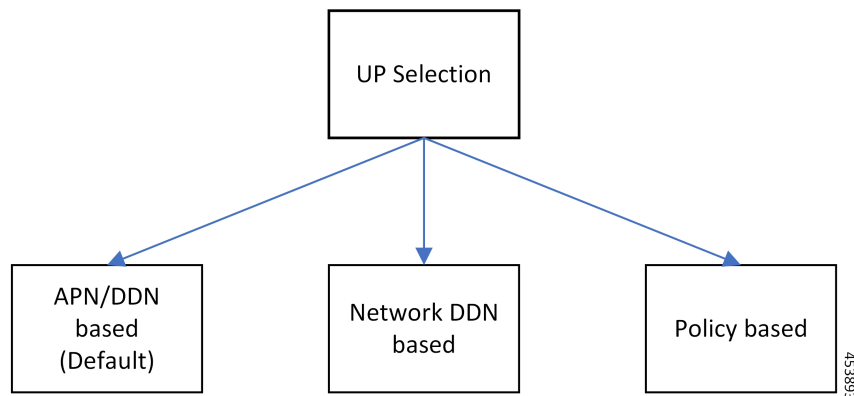
- DNN or APN based
- Network based
- Policy based



Note DNN is enabled when UPF selection policy isn't associated.

How it Works

This section describes how the feature works.



UPF Selection Methods

DNN or APN Based

- Create Session request message has APN information. This APN gets configured as part of DNN-list in the Network element profile for each user-plane.
- The PDN establishment considers these user-planes.
- UPF selection uses Capacity and Priority if many user-planes are available.

Network Based

- UPF selection considers DNN which got configured as part of the APN or DNN profile.
- This DNN is local SGW network specific DNN name.
- The same network DNN or APN name gets configured as part of DNN-list in the network element profile for each user-plane.
- Instead of using APN that comes in CSReq, local DNN is used for the UPF selection based on the DNN list.

For example, in case of roaming scenario where APN is not known, this configuration helps in UPF selection.

- PDN establishment considers these user-planes.
- UPF selection uses Capacity and Priority if many user-planes are available.

UPF Selection Policy Based

- UPF selection profile configuration with parameters determines UPF for each precedence. The supported max number of precedencies are four.
- Each precedence parameter is a *Logical AND* condition. If DNN and DCNR are configured as precedence 1, then it searches for the DNN supported user-plane and enables DCNR based support. If this search criteria fails, it moves to the next (mostly 2) precedence and tries to evaluate that condition.
- UPF selection policy is associated with a DNN profile.

- UPF group provides characteristics to the network element profile which belongs to the same UPF group profile.
- UPF selection uses Capacity and Priority if many user-planes available.

**Note**

- cnSGW-C rejects the call with Create Session Response specifying cause as NO_RESOURCE_AVAILABLE when no UPF matches the precedence criteria.

Configuring UPF Selection Methods

This section describes how to configure the UPF selection methods.

Configuring UPF Group Profile-based UPF Selection

This section describes how to configure UPF group profile-based UPF selection.

Use the following commands to configure the UPF group profile-based UPF selection.

```
config
  profile upf-group upf_group_name
    dcnr [true | false]
  end
```

NOTES:

- **profile upf-group upf_group_name**—Specify the UPF group name. Must be a string.
- **dcnr [true | false]**—Specify to enable or disable support for dual connectivity with new radio. Default value is false.

Sample Configuration

Following is a sample configuration.

```
config
  profile upf-group G1
    dcnr true
  end
```

Configuring Network-based UPF Selection

This section describes how to configure network-based UPF selection.

Use the following commands to configure the network-based UPF Selection.

```
config
  profile network-element upf_name
    node-id node_id_value
    n4-peer-address ipv4 ipv4_address
    n4-peer-address ipv6 ipv6_address
    n4-peer-port port_number
    dual-stack-transport { true | false }
```

```

upf-group-profile upf_group_profile_name
dnn-list dnn_list
priority priority_value
capacity capacity_value
end

```

NOTES:

- **network-element upf** *upf_name*—Specify the UPF profile name.
- **node-id** *node_id_value*—Specify the Node ID of the UPF node.
- **n4-peer-address ipv4** *ipv4_address*—Specify the IPv4 address.
- **n4-peer-address ipv6** *ipv6_address*—Specify the IPv6 address.
- **dual-stack-transport { true | false }**—Enable the dual stack feature that allows you to specify IPv6 or IPv4 address. Specify true to enable this feature.
- **upf-group-profile** *upf_group_profile_name*—Specify the UPF group profile name.
- **dnn-list** *dnn_list*—Specify the DNN list supported by UPF node.
- **priority** *priority_value*—Specify the static priority relative to other UPFs. This is used for load balancing. Must be an integer in the range of 0–65535. Default value is 1.
- **capacity** *capacity_value*—Specify the capacity relative to other UPFs. This is used for load balancing. Must be an integer in the range of 0–65535. Default value is 10.

Sample Configuration

Following is a sample configuration.

```

config
profile network-element upf UP1
node-id      upf1@sgw.com
upf-group-profile G1
dnn-list [dnn1 dnn2]
priority 20
capacity 65535
end

```

Configuring Policy based UPF Selection

This section describes how to configure Policy based UPF selection.

Use the following commands to configure the Policy based UPF Selection.

```

config
policy upf-selection upf_selection_policyname
  precedence precedence_value location
exit
  precedence precedence_value dnn
exit
exit

```

NOTES:

- **upf-selection** *upf_selection_policyname* - Specify the UPF selection policy name.

- **precedence** *precedence_value* - Specify the precedence for entry. Must be an integer in the range of 1-4.

Sample Configuration

Following is a sample configuration.

```
config
policy upf-selection upf_poll
  precedence 1
    [ location ]
  exit
  precedence 2
    [ dnn ]
  exit
exit
```

Troubleshooting Information

This section describes the troubleshooting information that enables you to view the UPF selection using DNN and DCNR configuration issues.

Configuration Errors

```
show config-error | tab
ERROR COMPONENT      ERROR DESCRIPTION
-----
SGWProfile           Subscriber policy name : sub_policy in profile sgw1 is not configured
SubscriberPolicy     Operator policy : op_policy1 under subscriber policy sub_policy2 is not
configured
OperatorPolicy       Dnn policy name : dnn_policy1 in operator policy op_policy2 is not
configured
DnnPolicy            Dnn profile name : dnn_profile1 in dnn policy dnn_policy2 is not configured
DnnProfile           UPF selection policy name : upf_sel_policy1 in dnn profile dnn_profile2
is not configured
```

UPF Selection using Location Support

Feature Description

This feature supports Location-based UPF selection in Create Session Request message. It performs this selection as per the received TAI or ECGI or both TAI and ECGI values together.

Configuring the UPF Selection Feature

This section describes how to configure the UPF selection using location.

Configuring ECGI for EPS

This section describes how to configure ECGI for EPS.

New configuration and profile **ecgi-group** added to configure the list of individual ECGI values or the range of ECGI.

You can configure both ECGI list and ECGI range. ECGI range configuration is optional.

Use the following commands to configure the ECGI Configuration for EPS.

```
config
  profile ecgi-group ecgi_group_name
    mcc mcc_value
    mnc mnc_value
    ecgi list ecgi_list_name
    ecgi range start start_value end end_value
  exit
```

NOTES:

- **ecgi-group** *ecgi_group_name* - Specify the ECGI group name.
- **mcc** *mcc_value* - Specify the MCC value. Must be a three digit number. For example, 123
- **mnc** *mnc_value* - Specify the MNC value. Must be a two or three digit number. For example, 23 or 456
- **ecgi list** *ecgi_list* - Specify the list of ECGI values - 7 digit hex string Eutra Cell ID. For example, A12345f. Must be a string.
- **ecgi range start** *start_value* **end** *end_value* - Specify the ECGI range start and end values. Must be a string.



Note

- You can configure multiple ECGI range values.
- You can configure multiple [PLMN and ECGI values] under **ecgi-group** configuration.
- You can configure maximum of 16 PLMNs under **ecgi-group** configuration.
- You can configure maximum of 64 ECGI values in the ECGI list under a PLMN.
- Maximum defined number of ECGI ranges under a PLMN is 64.

Sample Configuration

Following is the sample configuration.

```
config
  profile ecgi-group e1 mcc 123 mnc 45
  ecgi list [ 1234567 abcdef0 ]
  ecgi range start 1111111 end ffffffff
  exit
```

Verifying ECGI for EPS Configuration

This section describes how to verify the ECGI Configuration for EPS.

Use the following `show` command to view the ECGI configuration for EPS.

```
show running-config profile ecgi-group
profile ecgi-group e1
mcc 123 mnc 45
ecgi list [ 1234567 abcdef0 ]
ecgi range start 1111111 end ffffffff
```

```
exit
exit
exit
```

Configuring TAI-Group

This section describes how to configure TAI-Group.

You can enhance the following TAI-Group configuration to support multiple TAI-Group configurations with different names.

Use the following commands to configure the TAI-Group.

```
config
  profile tai-group tai_group_name
    mcc mcc_value
    mnc mnc_value
    tac list tac_list
    tac range start start_value end end_value
  exit
```

NOTES:

- **tai-group** *tai_group_name* - Specify the TAI group name.
- **mcc** *mcc_value* - Specify the MCC value. Must be a three digit number. For example, 123
- **mnc** *mnc_value* - Specify the MNC value. Must be a two or three digit number. For example, 23 or 456
- **tac list** *tac_list* - Specify the list of TAC values - `[0-9a-fA-F]{4}|[0-9a-fA-F]{6}` - 4 digit or 6 digit hex string - Example A123, 1a2B3F. Must be a string.
- **tac range start** *start_value* **end** *end_value* - Specify the TAC range start and end values. Must be a string.



Note

- You can configure maximum of 16 PLMNs under a TAI-Group.
- You can configure maximum of 64 TAC values in a TAC list under a PLMN.
- Maximum defined number of TAC ranges under a PLMN is 64.

Sample Configuration

Following is the sample configuration.

```
config
profile tai-group TAI-GRP1
  mcc 123 mnc 234
  tac list [ 1a25 A123 ]
  tac range start B234 end b999
  exit
  tac range start C213 end c999
  exit
exit
mcc 231 mnc 45
  tac list [ 2a2B B123 ]
  tac range start d111 end d999
```



```

    exit
  exit
exit

```

Configuring Location-area-group

This section describes how to configure Location-area-group.

You can add new configuration and profile location-area-group. Configuration of **ecgi-group** and **tai-group** are optional.

Use the following commands to configure the Location-area-group.

```

config
  profile location-area-group location_area_group_name
    tai-group tai_group_name
    ecgi-group ecgi_group_name
  exit

```

NOTES:

- **location-area-group** *location_area_group_name* - Specify the location area group name.
- **tai-group** *tai_group_name* - Specify the TAI group name.
- **ecgi-group** *ecgi_group_name* - Specify the ECGI group name.

Sample Configuration

Following is the sample configuration.

```

config
profile location-area-group LOC_AREA_GRP_1
  tai-group TAI-AUTO-GRP1
  ecgi-group ECGI-AUTO-GRP1
exit
profile location-area-group LOC_AREA_GRP_2
  tai-group TAI-AUTO-GRP2
exit

```

Configuring UPF Group and UPF Selection Policy Enhancement

This section describes how to configure UPF Group and UPF Selection Policy Enhancement.

You can add new configuration under upf-group-profile to configure location-area-group-list.

Use the following commands to configure the UPF group and UPF selection policy enhancement.

```

config
  profile upf-group upf_group_name
    location-area-group-list [area_group_list]
  exit

config
  policy upf-selection selection_policy_name
    precedence value [ selection_parameter_list ]
  exit

```

NOTES:

- **upf-group** *upf_group_name* - Specify the UPF group name.
- **location-area-group-list** *area_group_list* - Specify the list of Location Area Group supported by UPF node.
- **upf-selection** *selection_policy_name* - Specify the UPF selection policy name.
- **precedence** *value* [*selection_parameter_list*] - Specify the precedence for entry. Must be an integer in the range of 1-4.



Note If pdn-type-subscription and pdn-type-session both are configured, pdn-type-subscription is considered.

Sample Configuration

Following is the sample configuration.

```

config
profile upf-group G1
  location-area-group-list [ LOC_AUTO_GRP_1 ]
exit
profile upf-group G2
  location-area-group-list [ LOC_AUTO_GRP_2 ]
exit
profile upf-group G3
  location-area-group-list [LOC_AUTO_GRP_1 LOC_AUTO_GRP_2 ]
exit

config
policy upf-selection upf_pol1
  precedence 1
    [ location ]
  exit
  precedence 2
    [ dnn ]
  exit
exit

```

Combined UPF Selection for cnSGW-C and SMF

Feature Description

This feature supports cnSGW-C and SMF to select the same UPF instance when the UPF and SMF are deployed on same cluster and UPF instance is available. If the UPF instance is not available, the UPF selection is based on the existing configurations.

Standards Compliance

The Combined UPF Selection for cnSGW-C and SMF feature complies with the following standards:

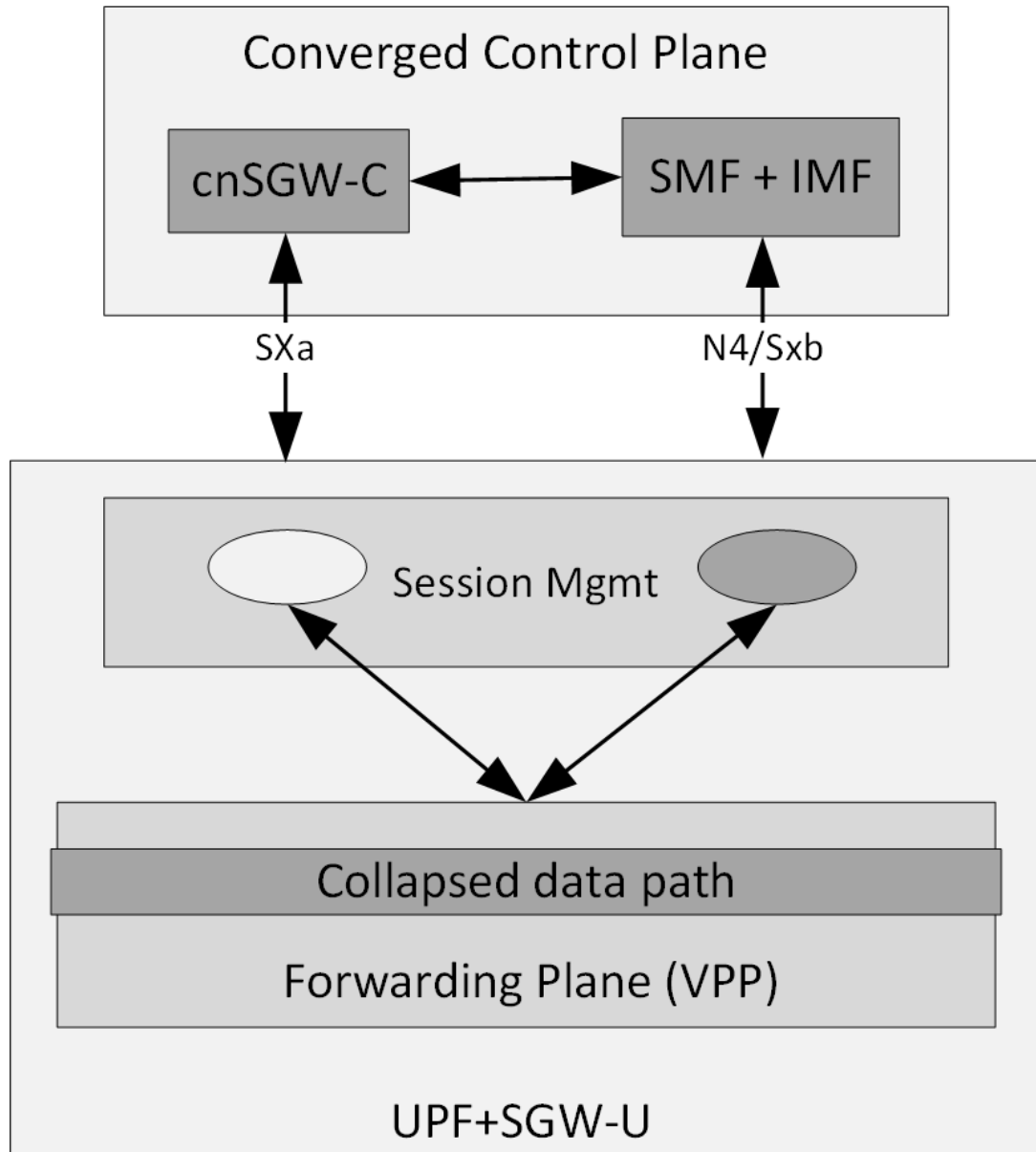
- 3GPP TS 23.401
- 3GPP TS 23.402

- *3GPP TS 29.274*
- *3GPP TS 23.214*
- *3GPP TS 29.244*
- *3GPP TS 24.008*

How it Works

This section describes how this feature works.

System Architecture



cnSGW-C and SMF/IWF uses the same UPF instance, so that UPF can use those sessions to the collapsed data path.

Control plane (cnSGW-C and SMF) selects the same User-plane in various scenarios (initial attach, handover, and so on).

Following actions takes place during Initial Attach:

- cnSGW-C passes the SGW-U FQDN information of selected UPF instance to SMF in Initial attach.
- SMF selects the UPF instance as per the received SGW-U FQDN.

- Same UPF FQDN is configured at cnSGW-C and at SMF to create a correlation as part of the network element profile.

Call Flows

This section describes the key call flows of Combined UPF Selection for cnSGW-C and SMF feature.

Initial Attach on 4G for 5G Capable Device Call Flow

This section describes the Initial Attach on 4G for 5G Capable Device call flow.

Figure 1: Initial Attach on 4G for 5G Capable Device Call Flow

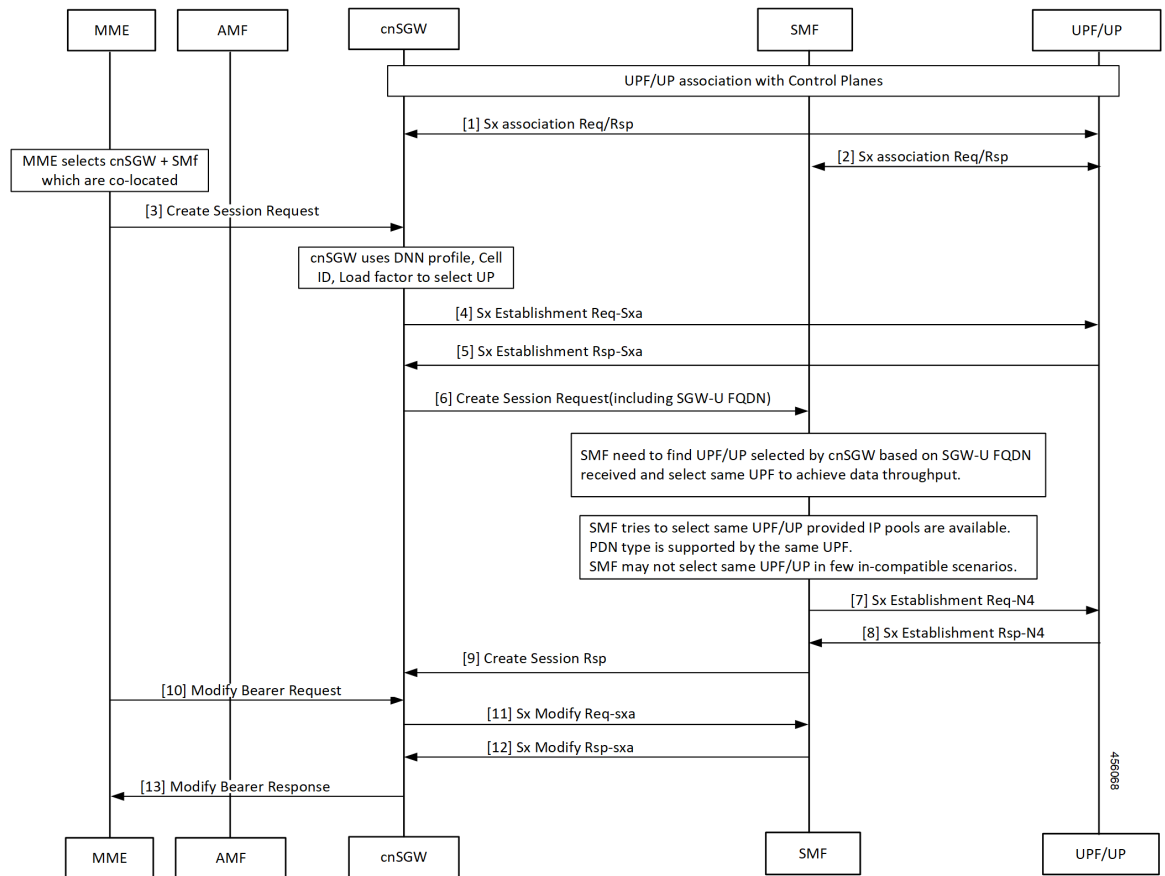


Table 3: Initial Attach on 4G for 5G Capable Device Call Flow Description

Step	Description
1	Established UPF association with control planes. cnSGW-C sends Sx Association Req/Rep to UPF.
2	SMF sends Sx Association Req/Rep to UPF.
3	MME sends Create Session Request to cnSGW-C after selecting co-located cnSGW-C and SMF.

Step	Description
4	cnSGW-C sends Sx Establishment Req (SXA) to UPF after selecting UPF using DNN profile, Cell ID, and local factors.
5	cnSGW-C receives Sx Establishment Res from UPF.
6	cnSGW-C sends Create Session Request to SMF including SGW-U FQDN.
7	SMF must find cnSGW-C selected UPF as per received SGW-U FQDN and select the same UPF to achieve data throughput. SMF tries to select same UPF when IP pools are available. Same UPF supports the PDN type. SMF may not select same UPF in few in-compatible scenarios. SMF send Sx Establishment Req N4 to UPF.
8	SMF receives Sx Establishment Res-N4 from UP.
9	cnSGW-C receives Create Session Response from SMF.
10	MME sends Modify Bearer Request to cnSGW-C.
11	cnSGW-C sends Sx Modify Req (SXA) to SMF.
12	cnSGW-C receives Sx Modify Res (SXA) to SMF.
13	cnSGW-C sends Modify Bearer Response to MME.

UPF Registration with User Plane ID Call Flow

This section describes the UPF Registration with User Plane ID call flow.

Figure 2: UPF Registration with User Plane ID Call Flow

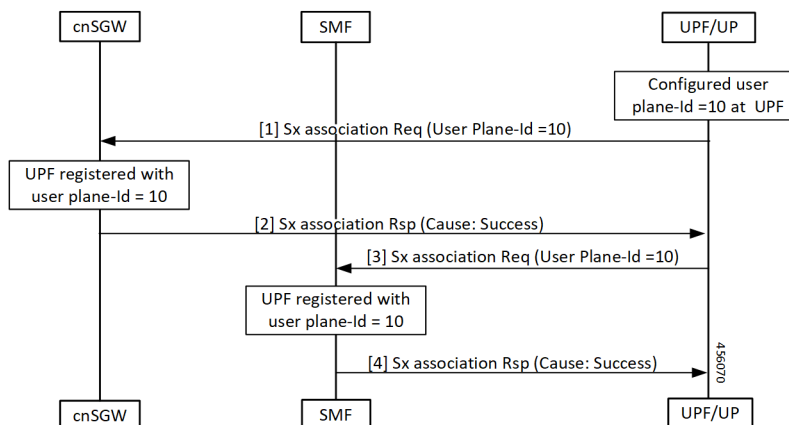


Table 4: UPF Registration with User Plane ID Call Flow Description

Step	Description
1	Configured User-plane ID at UPF cnSGW-C receives Sx association Request from UPF with configured User-plane ID.
2	UPF receives Sx association Response with Cause = SUCCESS from cnSGW-C.
3	SMF receives Sx association Request from UPF with configured User-plane ID.
4	UPF receives Sx association Response with Cause = SUCCESS from SMF.

Inter-SGW Handover on 4G RAT for 5G Capable Devices Call Flow

This section describes the Inter-SGW Handover on 4G RAT for 5G Capable Devices call flow.

Figure 3: Inter-SGW Handover on 4G RAT for 5G Capable Devices Call Flow

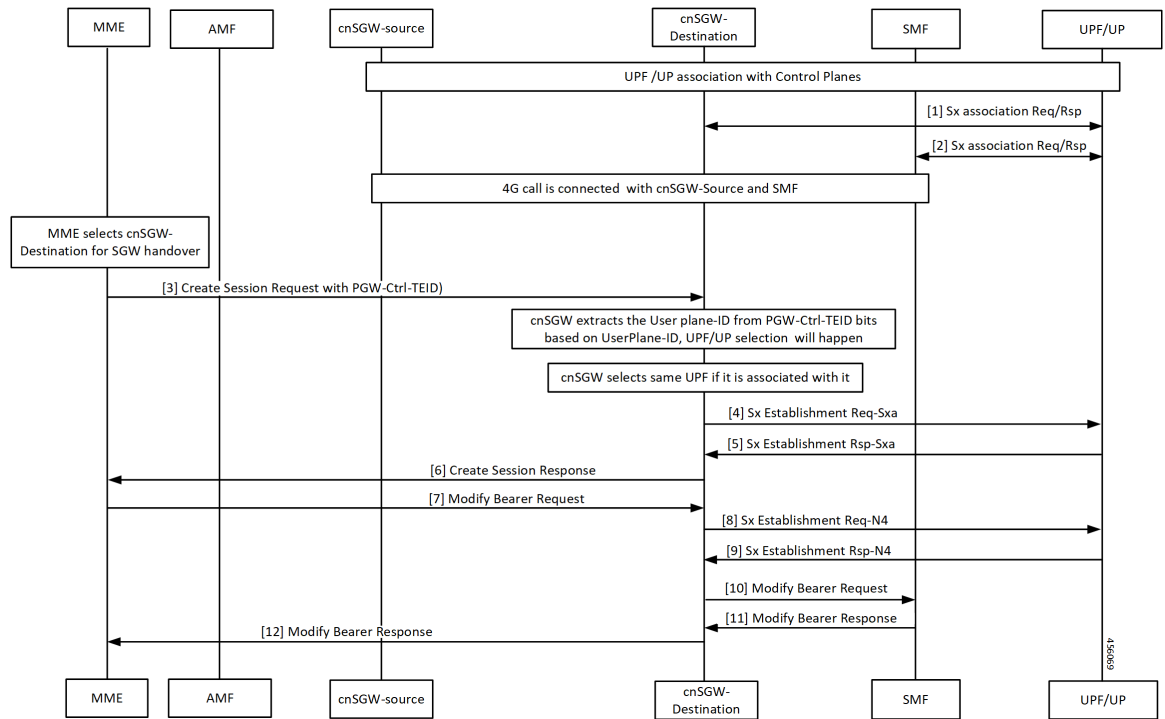


Table 5: Inter-SGW Handover on 4G RAT for 5G Capable Devices Call Flow Description

Step	Description
1	Established UPF association with control planes. UPF sends Sx Association Req/Rep to destination cnSGW-C.
2	UPF sends Sx Association Req/Rep to SMF.

Step	Description
3	4G call connected between cnSGW-C-source and SMF. MME selects cnSGW-C-Destination for the SGW handover. MME sends Create Session Req with PGW-Ctrl-TEID to cnSGW-C-Destination.
4	cnSGW-C extracts same associated UPF ID from PGW-Ctrl-TEID. cnSGW-C-Destination sends Sx Establishment Req (SXA) to UPF.
5	cnSGW-C-Destination receives Sx Establishment Rsp (SXA) from UPF.
6	cnSGW-C-Destination sends Create Session Response to MME.
7	cnSGW-C-Destination receives Modify Bearer Request from MME.
8	cnSGW-C-Destination sends Sx Establishment Req-N4 to UPF.
9	cnSGW-C-Destination receives Sx Establishment Rsp-N4 from UPF.
10	cnSGW-C-Destination sends Modify Bearer Request to SMF.
11	cnSGW-C-Destination receives Modify Bearer Response from SMF.
12	cnSGW-C-Destination forwards Modify Bearer Request to MME.

5G to EPS Handover Using N26 Interface – cnSGW-C and SMF Separate Node Call Flow

This section describes the 5G to EPS Handover Using N26 Interface – cnSGW-C and SMF Separate Node call flow.

Figure 4: 5G to EPS Handover Using N26 Interface – cnSGW-C and SMF Separate Node Call Flow

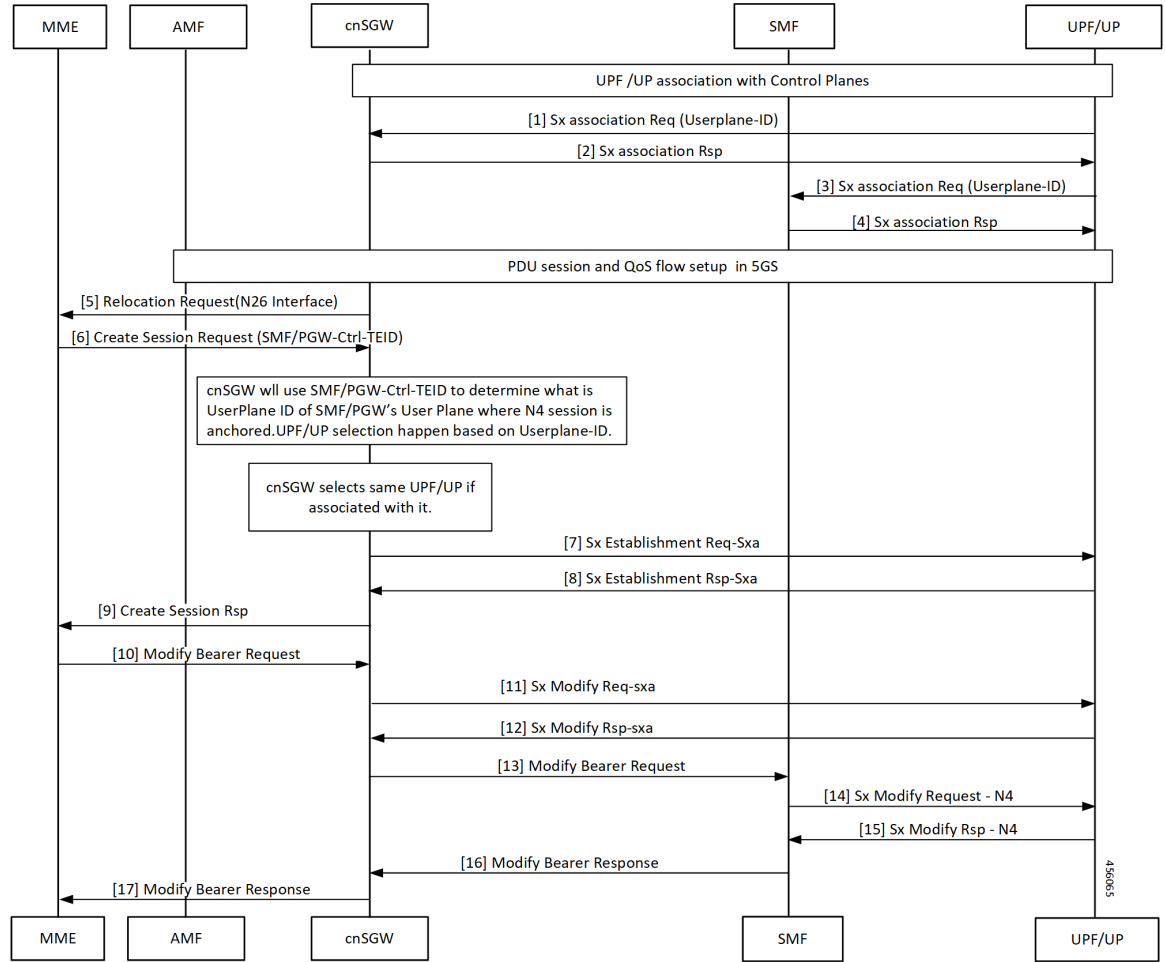


Table 6: 5G to EPS Handover Using N26 Interface – cnSGW-C and SMF Separate Node Call Flow Description

Step	Description
1	cnSGW-C selects associated same UPF. cnSGW-C receives Sx Establishment Request with User-plane ID from UPF/UP.
2	cnSGW-C sends Sx Establishment Response from UPF/UP.
3	UPF/UP sends Sx Association Request with User-plane ID to SMF.
4	SMF sends Sx Association Response to UPF/UP.
5	cnSGW-C sends Relocation Request to MME on interface N26.
6	MME sends Create Session Request to cnSGW-C with SMF and PGW-ctrl-TEID information.
7	cnSGW-C selects associated same UPF. cnSGW-C sends Sx Establishment Req (SXA) to UPF/UP.

Step	Description
8	cnSGW-C receives Sx Establishment Rsp (SXA) from UPF/UP.
9	cnSGW-C sends Create Session response to MME.
10	MME sends Modify Bearer Request to cnSGW-C.
11	cnSGW-C sends Sx Modify Req (SXA) to UPF/UP.
12	cnSGW-C receives Sx Modify Rsp (SXA) from UPF/UP.
13	cnSGW-C sends Modify Bearer Request to SMF.
14	SMF sends Sx Modify Request – N4 to UPF/UP.
15	SMF receives Sx Modify Response from UPF/UP.
16	cnSGW-C receives Modify Bearer Response to SMF.
17	cnSGW-C forwards Modify Bearer Response to MME.

Wi-Fi to LTE Handover Call Flow

This section describes the Wi-Fi to LTE Handover call flow.

Figure 5: Wi-Fi to LTE Handover Call Flow

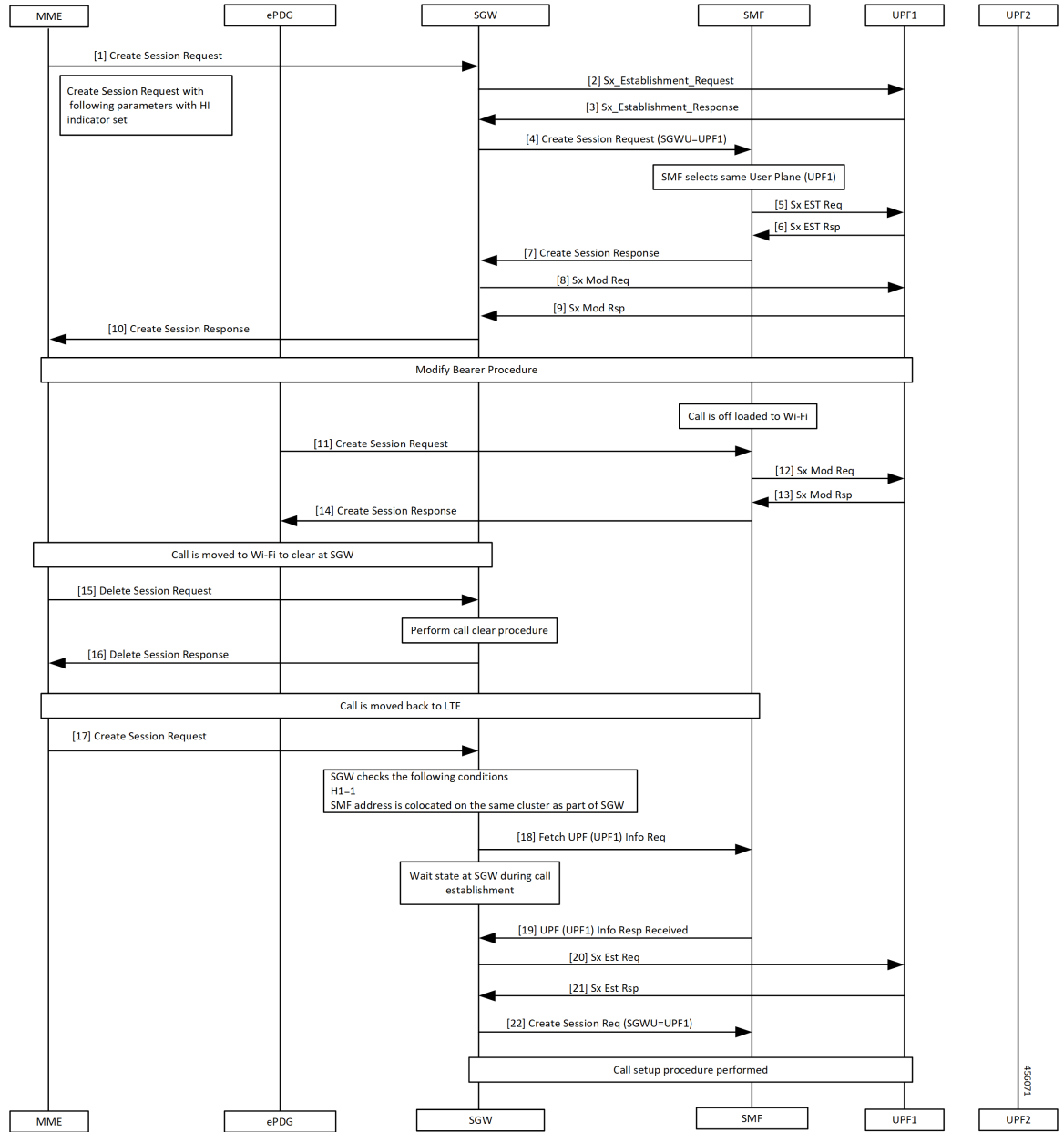


Table 7: Wi-Fi to LTE Handover Call Flow Description

Step	Description
1	MME sends create Session Request to SGW.
2	SGW sends Sx Establishment Request to UPF1.
3	SGW receives Sx Establishment Response from SMF.
4	SGW sends Create Session Request to SMF. SMF selects same UPF.

Step	Description
5	SMF sends Sx Establishment Request to UPF1.
6	SMF receives Sx Establishment Response from UPF1.
7	SMF sends Create Session Response to SGW.
8	SGW sends Sx Mod Request to UPF1.
9, 10	SGW receives Sx Mod Response from UPF1 and forwards to MME.
11	Modify Bearer procedure takes place and off-loaded call to Wi-Fi. ePDG sends Create Session Request to SGW.
12	SMF sends Sx Mod Request to UPF1.
13	SMF receives Sx Mod Response from UPF1.
14	ePDG receives Create Session Response from SGW.
15	Call moved to Wi-Fi to clear at SGW. MME sends Delete Session Request to SGW.
16	MME receives Delete Session Response from SGW after performing call clear procedure.
17	MME sends Create Session Request to SGW.
18	SGW sends fetch UPF (UPF1) info request to SMF after checking SMF as same cluster as cnSGW-C.
19	SGW receives UPF (UPF1) Info Response from SMF.
20	SGW sends Sx Establishment Request to UPF1.
21	SGW receives Sx Establishment Response from UPF1.
22	SGW sends Create Session Request with SGWU=UPF1 to UPF1 and performs call setup procedure.

Configuring the Combined UPF Selection for cnSGW-C and SMF

This section describes how to configure the Combined UPF Selection for cnSGW-C and SMF.

Configuring Converged-Core Profile

This section describes how to configure the Converged-Core Profile.

Use the following commands to configure the profile converged-core with UPF selection enabled.

```

config
  profile converged-core core_name
    max-upf-index value
    no upf-selection disable
  exit

```

Use the following commands to configure the profile converged-core with UPF selection disabled.

```
config
  profile converged-core core_name
    max-upf-index value
    upf-selection disable
  exit
```

NOTES:

- **converged-core** *core_name* - Specify the converged core profile name.
- **max-upf-index** *value* - Specify the UPF index value. Must be an integer in the range of 1-1023.
- **no upf-selection disable** - Enable colocated UPF selection.
- **upf-selection disable** - Disable colocated UPF selection.

Sample configuration

Following is a sample configuration with UPF selection enabled.

```
config
profile converged-core ccl
max-upf-index 1023
no upf-selection disable
exit
```

Following is a sample configuration with UPF selection disabled.

```
config
profile converged-core ccl
max-upf-index 1023
upf-selection disable
exit
```

Verifying the Profile Converged-core Configuration

This section describes how to verify the Profile Converged-core configuration.

Use the following show command to view the Profile Converged-Core configuration with UPF selection enabled.

```
show running-config profile converged-core ccl
profile converged-core ccl
max-upf-index 1023
no upf-selection disable
exit
```

Use the following show command to view the Profile Converged-Core configuration with UPF selection disabled.

```
show running-config profile converged-core ccl
profile converged-core ccl
max-upf-index 1023
upf-selection disable
exit
```

Configuring Node-ID

This section describes how to configure the Node-ID.

Use the following commands to configure the Node-ID.

```
config
  profile network-element upf upf_name
    node-id node_id_value
  exit
```

NOTES:

- **network-element upf upf_name** - Specify the UPF peer network element name.
- **node-id node_id_value** - Specify the Node ID of the UPF node. Must be a string

Sample Configuration

Following is a sample configuration.

```
config
profile network-element upf upf1
node-id upf1@cn.com
exit
```

UPF Selection OAM Support

This section describes operations, administration, and maintenance information for this feature.

Bulk Statistics

UE Disconnect Statistics

```
sgw_ue_disconnect_stats{app_name="smf",cluster="cn",data_center="cn",instance_id="0",
reason="userplane_info_not_available",service_name="sgw-service"} 24
```

PDN Disconnect Statistics

```
sgw_pdn_disconnect_stats{app_name="smf",cluster="cn",data_center="cn",instance_id="0",
pdn_type="ipv4",rat_type="EUTRAN",reason="userplane_info_not_available",service_name="sgw-service"}
8
```

```
sgw_pdn_disconnect_stats{app_name="smf",cluster="cn",data_center="cn",instance_id="0",
pdn_type="ipv4v6",rat_type="EUTRAN",reason="userplane_info_not_available",service_name="sgw-service"}
15
```

```
sgw_pdn_disconnect_stats{app_name="smf",cluster="cn",data_center="cn",instance_id="0",
pdn_type="ipv6",rat_type="EUTRAN",reason="userplane_info_not_available",service_name="sgw-service"}
1
```

SGW Service Statistics

```
sgw_service_stats{app_name="smf",cluster="cn",data_center="cn",fail_reason="userplane_selection_fail",
instance_id="0",interface="interface_sgw_ingress",reject_cause="no_resources_available",service_name=
```

```
"sgw-service",sgw_procedure_type="initial_attach",status="failure",sub_fail_reason=""}  
22
```

```
sgw_service_stats{app_name="smf",cluster="cn",data_center="cn",fail_reason="userplane_selection_fail",  
instance_id="0",interface="interface_sgw_ingress",reject_cause="no_resources_available",service_name="sgw-service",  
sgw_procedure_type="secondary_pdn_creation",status="failure",sub_fail_reason=""}  
2
```

