



Idle Entry Procedure

- [Feature Summary and Revision History, on page 1](#)
- [How it Works, on page 1](#)

Feature Summary and Revision History

Summary Data

Table 1: Summary Data

Applicable Product(s) or Functional Area	AMF
Applicable Platform(s)	SMI
Feature Default Setting	Enabled - Always-on
Related Documentation	Not Applicable

Revision History

Table 2: Revision History

Revision Details	Release
First introduced.	2021.04.0

How it Works

This section describes how this feature works.

Call Flows

This section describes the key call flow for this feature.

gNB-Initiated UE Context Release Procedure Call Flow

This section describes the gNB-Initiated UE Context Release Procedure call flow.

Figure 1: gNB-Initiated UE Context Release Procedure Call Flow

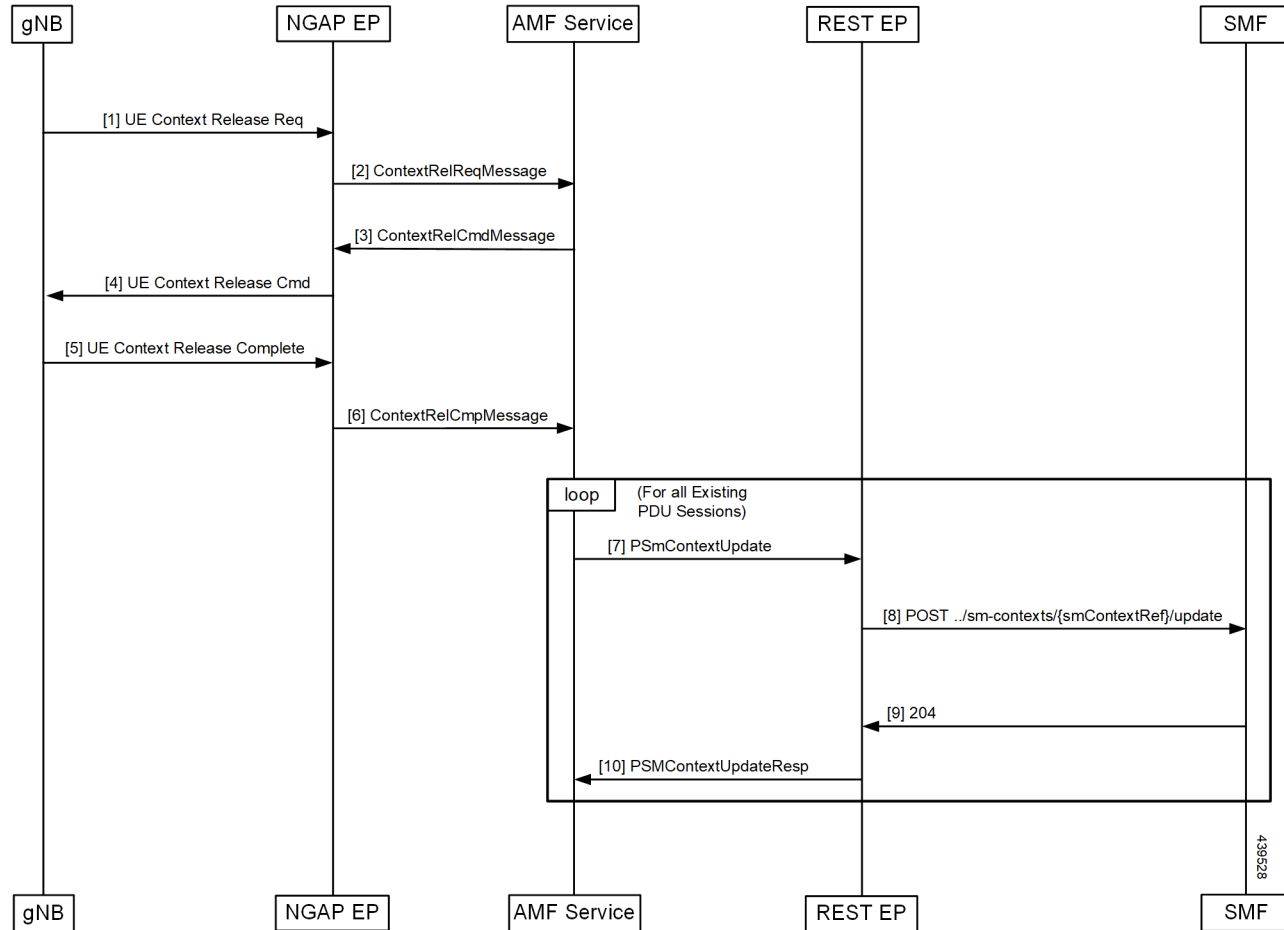


Table 3: gNB-Initiated UE Context Release Procedure Call Flow Description

Step	Description
1	AMF receives UE Context Release Request from gNB.
2	AMF sends UE Context Release Command to gNB.
3	AMF receives UE Context Release Complete from gNB.
4	SmContextUpdate procedure is initiated for all existing PDU sessions of the subscriber.
5	Once the SmContextUpdate is complete, UE is moved to Idle state.
6	T3512 Timer is started.
7	On expiry of T3512 timer, the UE Detach Timer is started.

Step	Description
8	On expiry of UE Detach Timer, the deregistration procedure is triggered.

UE/NW Initiated Deregistration followed by UE Release Procedure Call Flow

This section describes the UE/NW Initiated Deregistration followed by UE Release Procedure call flow.

Figure 2: UE Context Release Procedure after Deregistration Call Flow

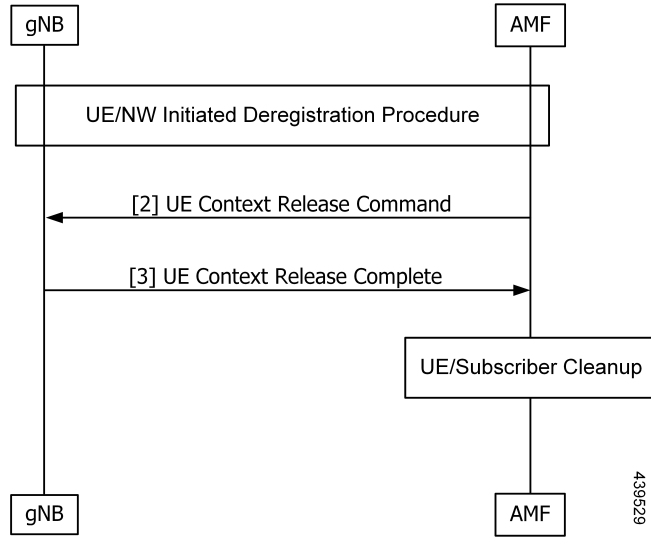


Table 4: UE Context Release Procedure after Deregistration Call Flow Description

Step	Description
1	UE/NW Initiated Deregistration procedure is completed. Deregistration Req/Accept is completed and UE is moved to Deregistered state.
2	AMF Sends UE Context Release Command to gNB.
3	AMF receives UE Context Release Complete from gNB.
4	As UE deregistration is already done and UE is moved to Deregistered state, UE Context/Subscriber cleanup is triggered, and subscriber and session is deleted from CDL.

