



Overview

- [Cisco Spaces: Space Utilization App, on page 1](#)
- [Overview, on page 1](#)
- [Licensing Requirements, on page 1](#)
- [Prerequisites, on page 2](#)
- [Navigating the Space Utilization App, on page 2](#)

Cisco Spaces: Space Utilization App

The Cisco Spaces: Space Utilization App provides historical insights into the usage of your physical spaces and helps you optimize your space. These insights are derived from data obtained through sensors integrated into the networking and collaboration infrastructure in your space.

The Space Utilization App enables you to view the occupancy and density for any space within a campus, building, or floor. This information includes data such as people count, peak utilization, and time spent by people in that physical space.

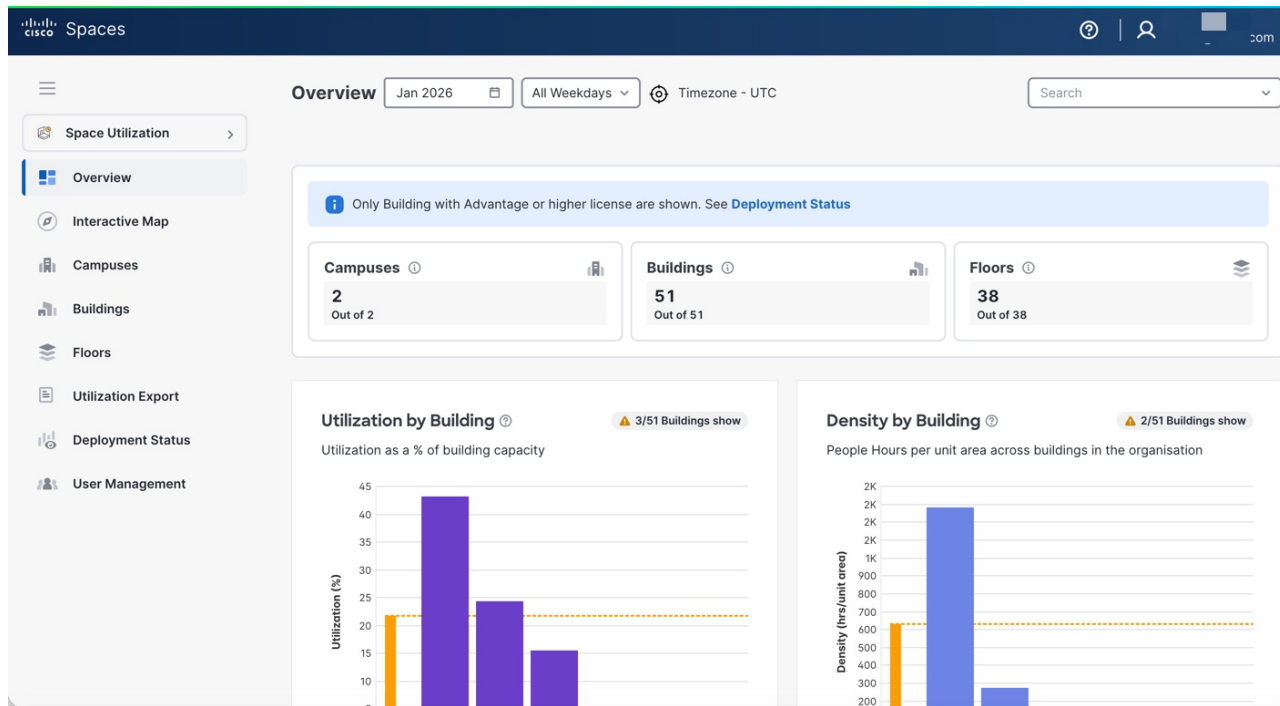
Overview

This section provides a high-level snapshot of how campus spaces are being used. It highlights key utilization metrics such as the number of campuses, buildings, and floors with active Advantage-level licensing, along with overall building capacity usage. You can quickly understand space availability, monitor utilization trends, and identify locations where deployment or data availability may need attention.

Licensing Requirements

The Space Utilization App is tied to the Cisco Spaces ACT and Cisco Spaces Unlimited licenses.

Figure 1: Space Utilization App



Prerequisites

You can use the Space Utilization App if your Cisco Spaces deployment meets these requirements:

- You need to run the Digital Maps Pro version and meeting rooms must be defined.
- If Webex devices are used to monitor occupancy, these devices must be integrated with Webex Control Hub.
- You must configure Cisco Spaces to work with various wireless networks so that Wi-Fi metrics and insights can be gathered.

Navigating the Space Utilization App

The **Overview** window is divided into two parts. The upper part has icons that present a quick view into the number of **Campuses**, **Buildings**, and **Floors** in your network and a count of these spaces that have rich maps integrated.

In the lower part, you can see the graphical trends for utilization (% average daily occupancy), density (people hours per unit area), and room utilization (% time during work hours) for buildings. In these graphs, click on the network bar to navigate to the detailed network view.

The app also supports the reporting of occupancy data from various sources such as collaboration devices, portal beams and PIR sensors (such as Thingsee and Moko).

To view the data for different time periods, change the selection in the month and days dropdown menus on the top of the **Overview** window.

You can use the search box to look up locations as per the defined **Location Hierarchy**.

UI updates

These enhancements improve user navigation and provide a more intuitive interface.

- **Dynamic Page Title:** The page title and filters now update automatically based on your selected view. You can quickly identify the specific building or floor and see which filter is applied.
- **Location** drop-down: The **Location Selection** drop-down list is now strategically repositioned to the right-hand side of the window. This filter is now available in both building and floor views, enabling you to switch between locations more efficiently.

Space Utilization App Beta UI Features

Heat Maps

The Space Utilization App now introduces **Heat Maps**, offering a new method to visualize historical occupancy trends and the utilization of physical spaces. The heatmap is displayed directly on top of the 3D Digital Map, allowing you to gain a spatial understanding of occupancy density and utilization patterns in an immersive manner.

Key Highlights

- **Heat Map Visualization:** A visual, color-coded representation of historical occupancy density at the floor level, displayed over the 3D Digital Map and helps to understand which areas of a floor have been most or least utilized over time.
- **Multi-Dimensional Analysis:** View heat maps for each day of the month, day of the week, or hour of the day to identify trends and analyze occupancy patterns and utilization trends across different time periods.

The benefits include:

- Identify historically underutilized and high-traffic zones.
- Make informed decisions about space reallocation or redesign.
- Complement traditional chart views with intuitive, map-based visualizations using the 3D Digital Map.
- Gain spatial insights to optimize workspace allocation and enhance the visitor experience.

Interactive Map

The Space Utilization App features **Interactive Maps**, which provide fast and intuitive geographic visualization of locations such as campuses, buildings, and floors on a global map. This feature displays occupancy and utilization metrics with dynamic markers and color-coded clusters. This enables you to gain quick insights at multiple levels.

Key Highlights

- Seamlessly switch between global, campus, building, and floor-level perspectives with dynamic clustering.
- Color-coded **Markers** representing key metrics such as people count, time spent, and percentage utilization.

- Smart Map Controls, zooming, and informative panels that facilitate rapid exploration of your spaces.