



Overview

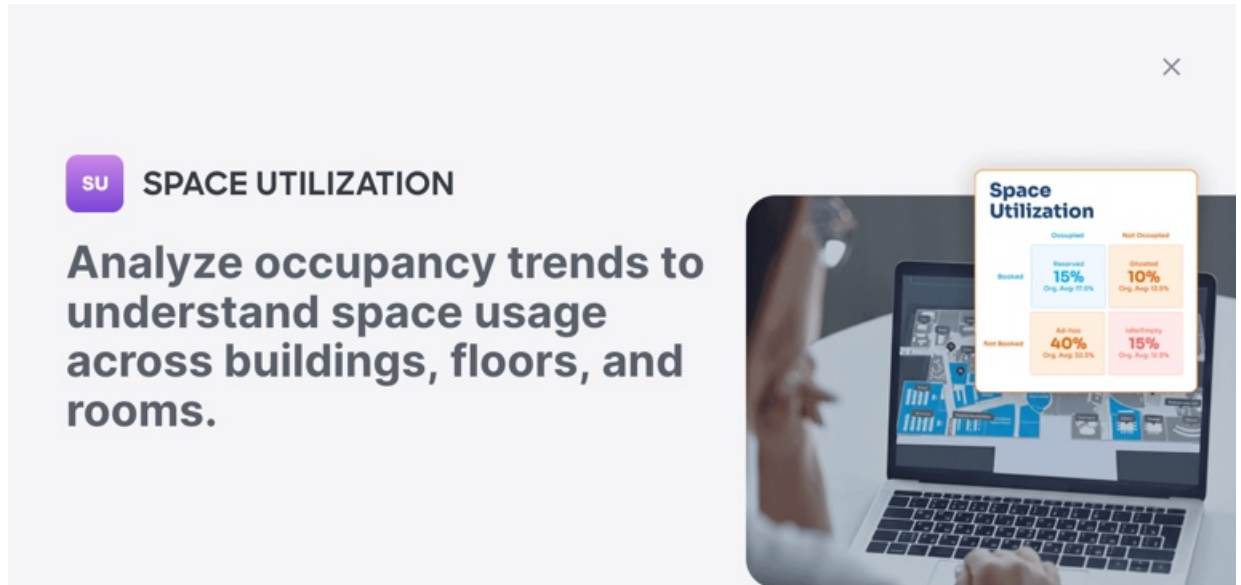
- [Cisco Spaces: Space Utilization App, on page 1](#)
- [Overview, on page 2](#)
- [Licensing Requirements, on page 3](#)
- [Prerequisites, on page 3](#)
- [Space Utilization App Features, on page 4](#)

Cisco Spaces: Space Utilization App

The Cisco Spaces: Space Utilization App provides historical insights into the usage of your physical spaces and helps you optimize your space. These insights are derived from data obtained through sensors integrated into the networking and collaboration infrastructure in your space.

The Space Utilization App enables you to view the occupancy and density for any space within a campus, building, or floor. This information includes data such as people count, peak utilization, and time spent by people in that physical space.

Figure 1: Space Utilization App



About the App

Access historical occupancy and space utilization data. Drive smarter decisions that reduce real estate costs, enhance space planning, streamline leases, optimize energy, and adapt to hybrid workplace demands. Eliminate guesswork and manual effort and make informed decisions to right size your real-estate portfolio and create the right mix of meeting rooms. Spot peak and low-traffic days to optimize energy and resource planning.



Close

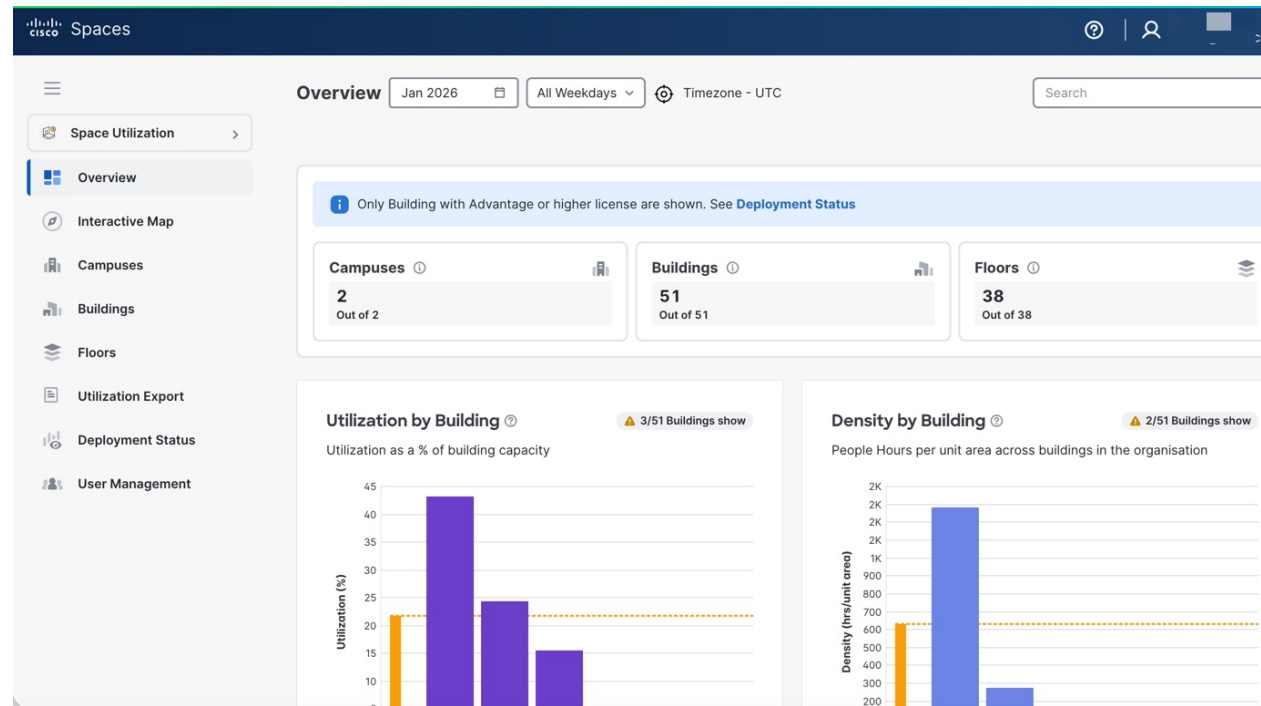
Open App

Overview

This section provides a high-level snapshot of how buildings are being used. It highlights key utilization metrics such as the number of campuses, buildings, and floors with active Advantage-level licensing, along with overall building capacity usage. You can quickly understand space availability, monitor utilization trends, and identify locations where deployment or data availability may need attention.

The app supports reporting occupancy data from various sources, including collaboration devices, portal beams, PIR sensors (Thingsee, Moko), Webex, and Wi-Fi.

Figure 2: Space Utilization App



Licensing Requirements

The Space Utilization App is tied to these Cisco Spaces licenses.

- ACT (displayed in UI as Advantage)
- UNLIMITED
- PREMIER_CW
- PREMIER_W

Prerequisites

You can use the Space Utilization App if your Cisco Spaces deployment meets these requirements:

- You need to run the Digital Maps Pro version and meeting rooms must be defined.
- If Webex devices are used to monitor occupancy, these devices must be integrated with Webex Control Hub.
- You must configure Cisco Spaces to work with various wireless networks so that Wi-Fi metrics and insights can be gathered.

Space Utilization App Features

The **Overview** window is divided into two parts. The upper part has icons that present a quick view into the number of **Campuses**, **Buildings**, and **Floors** in your network and a count of these spaces that have rich maps integrated.

In the lower part, you can see the graphical trends for utilization (% average daily occupancy), density (people hours per unit area), and room utilization (% time during work hours) for buildings. In these graphs, click on the network bar to navigate to the detailed network view.

The app also supports the reporting of occupancy data from various sources such as collaboration devices, portal beams and PIR sensors (such as Thingsee and Moko).

To view the data for different time periods, change the selection in the month and days dropdown menus on the top of the **Overview** window.

You can use the search box to look up locations as per the defined **Location Hierarchy**.

UI updates

These enhancements improve user navigation and provide a more intuitive interface.

- **Dynamic Page Title:** The page title and filters now update automatically based on your selected view. You can quickly identify the specific building or floor and see which filter is applied.
- **Location drop-down:** The **Location Selection** drop-down list is now strategically repositioned to the right-hand side of the window. This filter is now available in both building and floor views, enabling you to switch between locations more efficiently.

Interactive Map

The Space Utilization App features **Interactive Maps**, which provide fast and intuitive geographic visualization of locations such as campuses, buildings, and floors on a global map. This feature displays occupancy and utilization metrics with dynamic markers and color-coded clusters. This enables you to gain quick insights at multiple levels.

Key Highlights

- Seamlessly switch between global, campus, building, and floor-level perspectives with dynamic clustering.
- Color-coded **Markers** representing key metrics such as people count, time spent, and percentage utilization.
- Smart Map Controls, zooming, and informative panels that facilitate rapid exploration of your spaces.