



Cisco Spaces: Right Now App

This chapter describes about the **Right Now** app.

- [Right Now Overview, on page 1](#)
- [Right Now on WiFi, on page 1](#)
- [Settings, on page 4](#)

Right Now Overview

The **Right Now** app provides you the Right Now report that shows the details of visitors currently present at your locations. Using the **Right Now** app, you can also create **Density Rules** through which you can send notifications to business users such as employees based on the visitor density or device count in the business locations.

The **Right Now** app is enhanced to address issues with counts when there are any changes in the **Location Hierarchy**. Prior to this enhancement, changes in **Location Hierarchy** such as adding new locations, removing existing locations or updating vital parameters such as **TimeZone** introduced stale or incorrect counts for Wi-Fi.

With this enhancement, the **Presence** chart count gets reset (removes all existing numbers until the current time) for the present day because the counts are invalid after the **Location Hierarchy** changes.

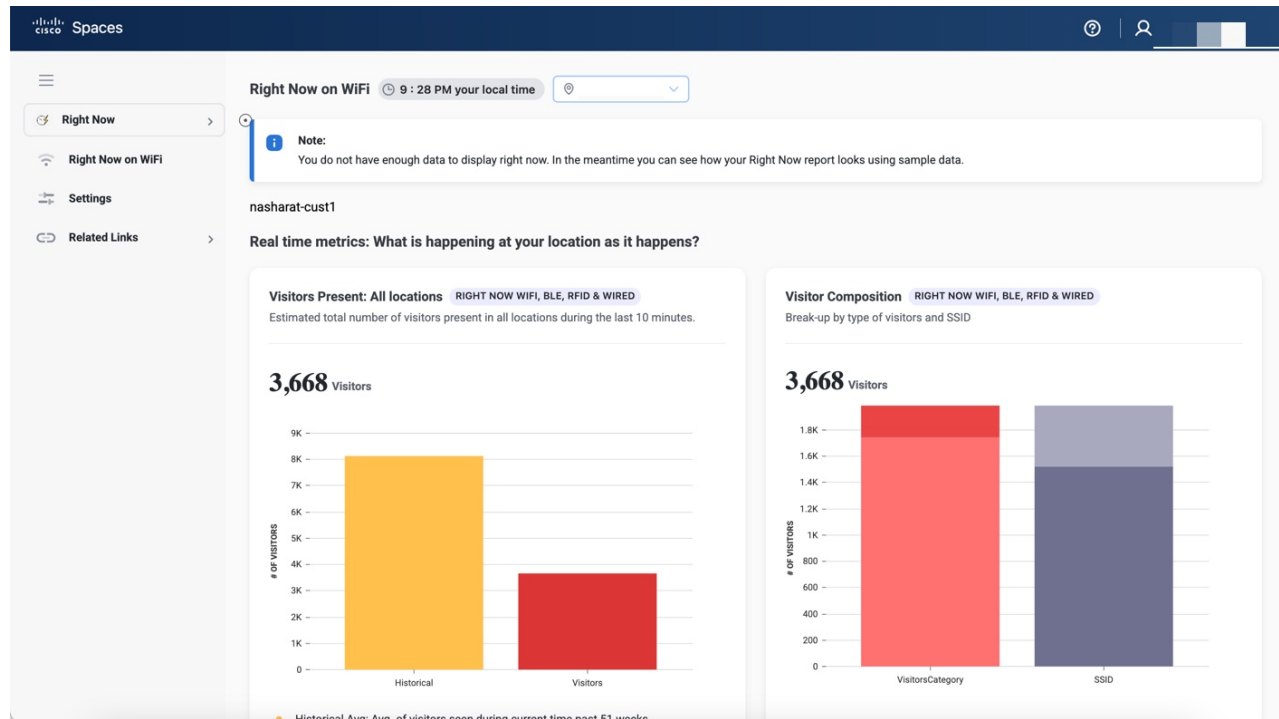
Right Now on WiFi

The Right Now on WiFi report displays the details of the visitors currently present at your locations. By default, the report shows the details of visitors currently present at all locations. You can filter upto the floor level.

The Right Now WiFi is enhanced to show the count of excluded devices that are not considered as visitors or filtered during data processing. The excluded device count is displayed as a message in the **Note** section of the Right Now Wifi.

The **Right Now** app is available for SEE, ACT, and EXTEND license types.

Figure 1: Right Now App

**Note**

- If a location is removed or modified in the location hierarchy or timezone is changed, the existing **Presence** chart count is reset.
- For BLE processing:
 - BLE group information should be received as part the IoT updates
 - RSSI value should be greater than -85
- For probing devices:
 - **Cisco Connector** and other device types: RSSI value should be greater than -70
 - **Cisco Meraki**: RSSI value should be greater than -100.

Only those probing devices meeting the specified signal strength thresholds are allowed to share the device location update events as part of the Firehose data stream.

- For wired device processing: Contact [Cisco Spaces support](#) to configure the IP addresses for switches in the backend.

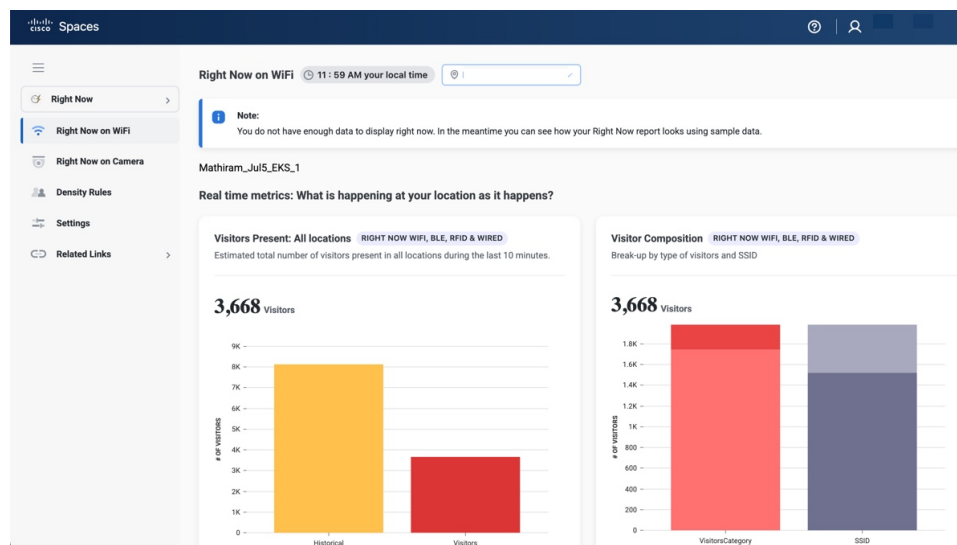
Viewing the Right Now Report

To view the Right Now report, perform the following steps:

Procedure

- Step 1** In the Cisco Spaces Dashboard, choose **Right Now**.
The **Right Now** window appears.
- Step 2** From the **Location** drop-down list, choose the desired network location.
The Right Now report for the selected network location is displayed.

Figure 2: Right Now on Wi-Fi



The local time of your system is displayed under the **Right Now** section at the top of the report.

The Right Now report displays the following charts:

- **Visitors Present: All locations:** Displays an estimated total number of visitors, during the last 10 minutes, in the filtered location including its child location.
- **Visitor Composition:** Displays the composition of active visitors, in percentage, by SSID category (employee, guest, etc.) and by SSID (top 5 SSIDs).
- **Visitors Present: All Locations:** Displays a trend of the total number of visitors during the last 10 minutes for the filtered location.
- **Visitors Present: Map View:** Displays the location-wise count of active visitors in the child locations of the filtered location.
 - **Map View:** The child locations of the filtered location are shown in the world map along with the total number of visitors in each of those child locations.
 - **Floor map view:** Select a specific floor to see the chosen floor map view as well.

If the selected location has a map, imported from Cisco CMX, which is uploaded to Cisco Spaces, you can view the floor and the total number of visitors on the displayed floor.

- **List View:** The child locations of the filtered location are listed, and the number of current visitors for each child location is shown against that location.

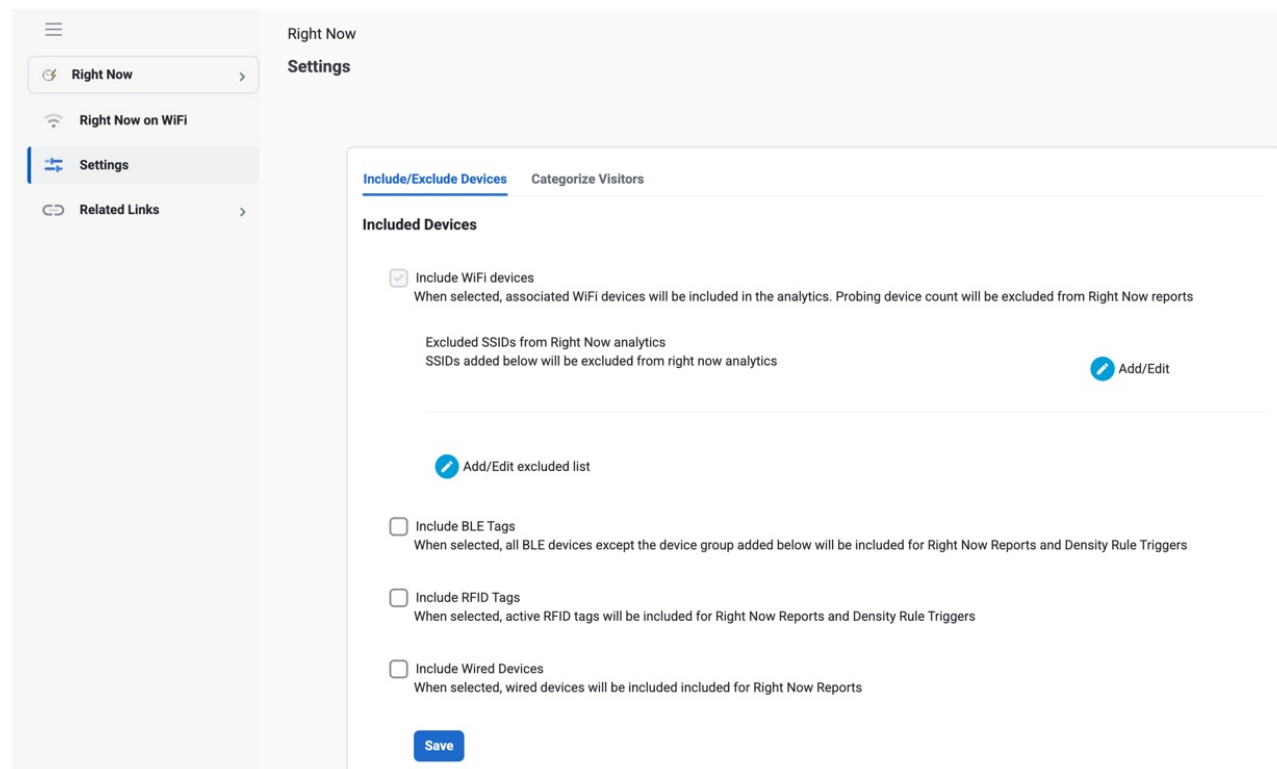
Note

- An "active visitor" can be any visitor who is present at the location during the last 10 minutes and is connected to the network (WLAN or SSID).
- If a device has a dwell time lesser than a minute, during the 10-minute window, it is excluded from the Right Now report.
- The average value for the last 51 weeks is shown as historical data for each chart in the report.

Settings

The **Settings** menu helps you manage devices, SSIDs, and visitors in the **Right Now** app reports. The **Settings** menu includes the **Include/Exclude Devices** and **Categorize Visitors** tabs.

Figure 3: Right Now - Settings



Including or Excluding Devices

Use the **Include/Exclude Devices** tab to select among the following options for Wi-Fi, BLE, and RFID devices for the Right Now reports:

- Wi-Fi devices option is included by default and you cannot deselect the same.

To exclude devices connected to specific SSIDs from the Right Now analytics, click **Add/Edit** or **Add/Edit excluded list** and select the desired SSIDs from the **Exclude SSIDs** list.

- BLE Tags: To include BLE tags in the Right Now reports, select **Include BLE Tags**.

To exclude specific device groups from the Right Now analytics, click **Add/Edit** or **Add/Edit excluded list** and select the desired BLE devices from the **Exclude BLE devices** list.

- RFID Tags: To include RFID tags in the Right Now reports, select **Include RFID Tags**.

- Wired Devices: To include wired devices as part of active visitors in the Right Now reports, select **Include Wired Devices**. By default, wired devices are excluded.



Note If you select RFID and BLE tags, then the corresponding device count is displayed in the Right Now report.

Categorizing Visitors

Use the **Categorize Visitors** tab to automatically or manually classify visitors, based on the visitor type, that have joined an SSID. The options available are:

- Auto
- Guest
- Employee
- Custom

