



# Notification Services

---

- [Apple Push Notifications](#), on page 1
- [Email Notifications](#), on page 4
- [Multiple Email Notification Configuration](#), on page 9
- [SMS Notifications](#), on page 10
- [Multiple SMSC Server Configuration](#), on page 18
- [Real Time Notifications](#), on page 20
- [Service Option Configuration](#), on page 26
- [NAP Notification](#), on page 27

## Apple Push Notifications

### Notification Configuration

To configure CPS to send a message to a subscriber with an Apple iPhone or other iOS device, perform the following steps.

- 
- Step 1** Log in to Policy Builder.
  - Step 2** Go to **Reference Data tab > Systems > a system or a cluster > Plugin Configurations > Notification Configuration**.
  - Step 3** Click the check box next to **Apple Push Notification Configuration**.
  - Step 4** View the **Notification Configuration** screen.

The following parameters can be configured under Apple Push Notification Configuration:

Table 1: Apple Push Notification Parameters

| Parameter            | Description                                                                                                                                                                                                                                                                                                                                                                                                                                                                                                                                                                                                                                 |
|----------------------|---------------------------------------------------------------------------------------------------------------------------------------------------------------------------------------------------------------------------------------------------------------------------------------------------------------------------------------------------------------------------------------------------------------------------------------------------------------------------------------------------------------------------------------------------------------------------------------------------------------------------------------------|
| APNS Server Address  | <ul style="list-style-type: none"> <li>• Apple Production: Connects to gateway.push.apple.com on port 2195.</li> <li>• Apple Test: Connects to gateway.sandbox.push.apple.com on port 2195.</li> <li>• Other: Uses a server address other than the standard Apple ones. It also uses the other gateway and server port fields defined in Other Server Gateway and Other Server Port fields below.</li> </ul> <p>Other: Uses a server address other than the standard Apple ones. It also uses the other gateway and server port fields defined in Other Server Gateway and Other Server Port fields below.</p> <p>Recommendation: Other</p> |
| Other Server Gateway | Name of a server gateway if Other is selected as APNS Server Address.                                                                                                                                                                                                                                                                                                                                                                                                                                                                                                                                                                       |
| Other Server Port    | Port number of the server gateway if Other is selected as APNS Server Address.                                                                                                                                                                                                                                                                                                                                                                                                                                                                                                                                                              |
| Certificate          | The certificate for the authorization to the gateway. You must provide a certificate file that is loaded into CPS.                                                                                                                                                                                                                                                                                                                                                                                                                                                                                                                          |
| Certificate Password | Password added to the certificate when connecting to the APNS.                                                                                                                                                                                                                                                                                                                                                                                                                                                                                                                                                                              |

**Step 5** Go to [Message Configuration, on page 2](#) to configure the message to be sent for the notification configuration done above.

## Message Configuration

To create the messages for a subscriber's Apple iPhone or the Apple iOS operating system to be sent by CPS, perform the following steps.

**Step 1** Select **Reference Data tab > Notifications > Apple Push Notifications**.

**Step 2** From right side, click **Apple Push Notification** under **Create Child** to open the pane.

Figure 1: Apple Push Notification Pane

The screenshot shows the configuration interface for an Apple Push Notification. On the left is a navigation menu with categories like Systems, Account Balance Templates, Custom Reference Data Tables, Diameter Agents, Diameter Clients, Diameter Defaults, Fault List, Ldap Server Sets, Notifications (selected), Policy Enforcement Points, RADIUS Service Templates, Subscriber Data Sources, and Tariff Times. Under Notifications, there are sub-items: Summary, Apple Push Notifications (expanded), default (selected), Email Notifications, SMS Notifications, Real Time Notifications, and GCM Notifications.

The main configuration area for 'Apple Push Notification' includes:

- \*Name:** default
- Badge:** 0
- Sound:** default
- Send Once Per Session
- Custom Fields:** A table with columns 'Field Name' and 'Field Value'.
- Alert (limit 163 characters):** A large text input area.
- Actions:** A dropdown menu.
- Copy:** A link to 'Current Apple Push Notification'.

The following parameters can be configured under Apple Push Notification:

Table 2: Apple Push Notification Message Configuration Parameters

| Parameter             | Description                                                                                                                                                                                                                                                                                                                                                                                                                                                                                                                                                                                                                                                                                                                                                                            |
|-----------------------|----------------------------------------------------------------------------------------------------------------------------------------------------------------------------------------------------------------------------------------------------------------------------------------------------------------------------------------------------------------------------------------------------------------------------------------------------------------------------------------------------------------------------------------------------------------------------------------------------------------------------------------------------------------------------------------------------------------------------------------------------------------------------------------|
| Name                  | The name of the notification message. This name is used in the action phrase in the policy definition. Best practice is to make this short, but meaningful and unique.                                                                                                                                                                                                                                                                                                                                                                                                                                                                                                                                                                                                                 |
| Badge                 | Default is 0 (number).<br>The number to display as the badge of the Apple Push Notification icon. If this property is absent, the badge is not changed. To remove the badge, set the value of this property to 0.<br>Example: 1, 2, 3, ....                                                                                                                                                                                                                                                                                                                                                                                                                                                                                                                                            |
| Sound                 | Default is 'default'.<br>The name of a sound file in the application bundle. The sound in this file is played as an alert. If the sound file doesn't exist or default is specified as the value, the default alert sound is played. The audio must be in one of the audio data formats that are compatible with system sounds. For more information, see <a href="https://developer.apple.com/library/ios/documentation/NetworkingInternet/Conceptual/RemoteNotificationsPG/Chapters/IPhoneOSClientImp.html#//apple_ref/doc/uid/TP40008194-CH103-SW6">https://developer.apple.com/library/ios/documentation/NetworkingInternet/Conceptual/RemoteNotificationsPG/Chapters/IPhoneOSClientImp.html#//apple_ref/doc/uid/TP40008194-CH103-SW6</a> .<br>Example: sound1, alert7, buzzSound_A |
| Send Once Per Session | Click this check box if you want to send the notification once per session.                                                                                                                                                                                                                                                                                                                                                                                                                                                                                                                                                                                                                                                                                                            |

| Parameter              | Description                                                                                                                                                                                                                                                                                                                                                                                                                                                                                                                                                                                                                                                                                                                                                                                                                                                                                                          |
|------------------------|----------------------------------------------------------------------------------------------------------------------------------------------------------------------------------------------------------------------------------------------------------------------------------------------------------------------------------------------------------------------------------------------------------------------------------------------------------------------------------------------------------------------------------------------------------------------------------------------------------------------------------------------------------------------------------------------------------------------------------------------------------------------------------------------------------------------------------------------------------------------------------------------------------------------|
| <b>Custom Fields</b>   | You can add custom fields with values that can be sent to the application.                                                                                                                                                                                                                                                                                                                                                                                                                                                                                                                                                                                                                                                                                                                                                                                                                                           |
| Field Name/Field Value | String<br>Example:<br>“high_score”: “1000”<br>“custom_field_1”: “display1”<br>“custom_field_2”: “false”<br><br>For more information on custom fields, refer to the following links: <ul style="list-style-type: none"> <li>• <a href="https://developer.apple.com/library/ios/documentation/networkinginternet/conceptual/remotenotificationspg/chapters/applepushservice.html">https://developer.apple.com/library/ios/documentation/networkinginternet/conceptual/remotenotificationspg/chapters/applepushservice.html</a></li> <li>• <a href="http://docs.appcelerator.com/platform/latest/#!/guide/Sending_and_Scheduling_Push_Notifications-section-43298780_SendingandSchedulingPushNotifications-CustomJSONpayloads">http://docs.appcelerator.com/platform/latest/#!/guide/Sending_and_Scheduling_Push_Notifications-section-43298780_SendingandSchedulingPushNotifications-CustomJSONpayloads</a></li> </ul> |
| Alert                  | This is the text that appears on the subscriber’s iPhone. If the message is too long, it is simply truncated. Test your messages before you place into production.<br><br>If you want to use a string, and substitute session information, use the syntax \$Name, for example, to insert the receiver’s name in the email.<br><br>Alerts are limited to 160 characters. Alerts longer than that are truncated.                                                                                                                                                                                                                                                                                                                                                                                                                                                                                                       |

To use Apple Push Notifications, you need to configure Service Options.

For more information on the configuration, see [Service Option Configuration, on page 26](#).

# Email Notifications

## Configure Notifications

CPS supports sending email notifications to one primary and one secondary email server, or alternatively to a pool of email servers

(See [Multiple Email Notification Configuration](#)).

When configured for one primary and one secondary email server, CPS will send all email notifications to the primary server. If the primary fails, CPS will retry the notification to the secondary server, if configured. If the secondary server notification fails, CPS will log that the notification was unable to be delivered.

To configure the primary and secondary email server connections that CPS will use to send email notifications to subscribers:

**Step 1** Login to Policy Builder.

**Step 2** Go to **Reference Data > Systems > a system or a cluster > Plugin Configurations > Notification Configuration**.

**Step 3** Click the check box next to **Email Notification Configuration**.

**Step 4** View the **Notification Configuration** screen that drops down.

The following parameters can be configured under Email Notification Configuration:

**Table 3: Email Notification Configuration Parameters**

| Parameter           | Description                                                                                                                              |
|---------------------|------------------------------------------------------------------------------------------------------------------------------------------|
| Mail Server Address | IP address or host name of the mail server to which the notification emails will be sent. Only IMAP email is supported at this time.     |
| Login/Password      | Enter any login and password information needed.                                                                                         |
| Enable TLS          | Enables transport layer security. This option is used for connecting to services other than basic IMAP services, such as Google's Gmail. |
| Smtp Port           | Specifies the SMTP port. This option is used for connecting to services other than basic IMAP services, such as Google's Gmail.          |

The following screen shows an example configuration using smtp.gmail.com.

**Figure 2: Notification Configuration**

**Step 5** (Optional) To configure a secondary (backup) email server, click the check box next to **Secondary Email Server** and configure the parameters for the secondary server.

**Step 6** Go to [Configure Messages, on page 6](#) to configure the message to be sent for the notification configuration.

# Configure Messages

Substitution value can be set from SPR, Balance, or the session and placed in the email body using \$[variable].

In the following example, we are using a subscriber AVP code for email. The value “\$email” is used in the body of the text and replaced then the email is sent.

We are also using \$timeStamp to add the Date/Time.

**Figure 3: Email Notification**

**Systems**

- Account Balance Templates
- Custom Reference Data Tables
- Diameter Agents
- Diameter Clients
- Diameter Defaults
- Fault List
- Ldap Server Sets
- Notifications**
  - Summary
  - Apple Push Notifications
  - Email Notifications
    - Email 1**
  - SMS Notifications
  - Real Time Notifications
  - GCM Notifications
- Policy Enforcement Points
- RADIUS Service Templates
- Subscriber Data Sources
- Tariff Times

**Email Notification**

**\*Name**  **Message Encoding (DCS)**

Send Once Per Session

**Subject**

**From Email Address**

**Reply To Email Address**

**Body (Text/Plain)**

Date/Time: \$timeStamp  
Dear \$email, your new session has started

**Body (Text/HTML)**

```
<br/><br/>
Date/Time: $timeStamp
<br/><br/>
<b>Dear $email, your new session has started. </b>
```

▼ **Actions**

**Copy:** [Current Email Notification](#)

215093

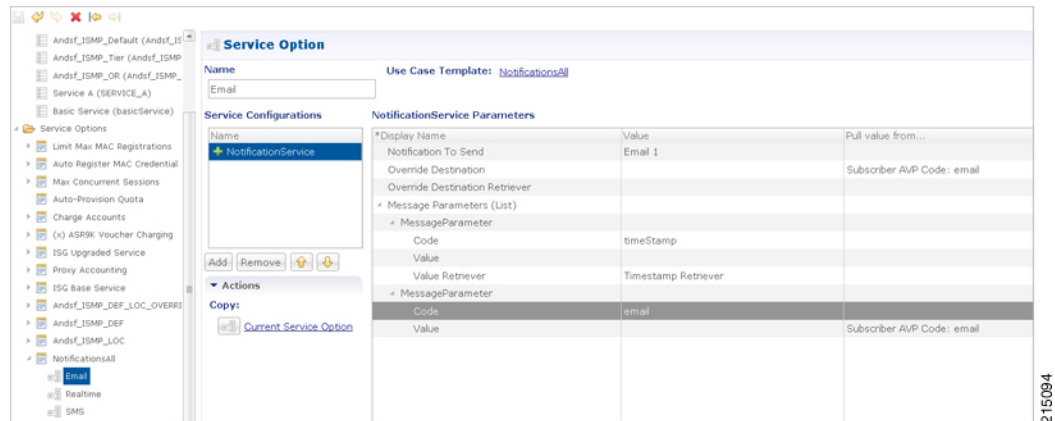
The following parameters can be configured under Email Notifications:

**Table 4: Email Notification Message Configuration Parameters**

| Parameter              | Description                                                                                                                                      |
|------------------------|--------------------------------------------------------------------------------------------------------------------------------------------------|
| Name                   | Name of the message.                                                                                                                             |
| Message Encoding (DCS) | Select the required message coding from drop-down list. Valid values are ISO-8859-1, US-ASCII, UTF-16 (UCS-2) and UTF-8. Default value is UTF-8. |
| Subject                | This is the subject line of the email to the subscriber.                                                                                         |
| From Email Address     | The From field in the email.                                                                                                                     |
| Reply To Email Address | Who the subscriber may reply to.                                                                                                                 |
| Body (Text/Plain)      | The text of the email the subscriber receives in plain format                                                                                    |
| Body (Text/HTML)       | The text of the email the subscriber receives in HTML format.                                                                                    |

To pull the values from SPR and replace in the email, we use the service option setting from the notification:

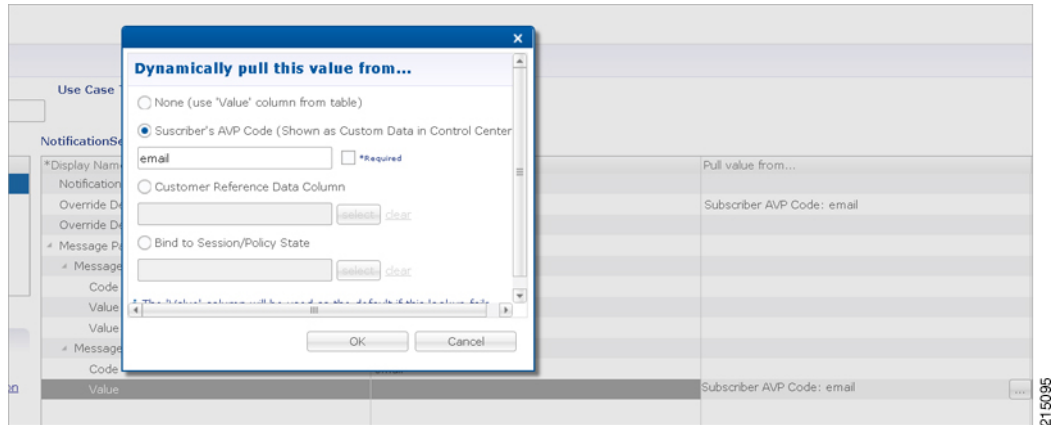
**Figure 4: Service Option**



For the timestamp, use the Value Retriever.

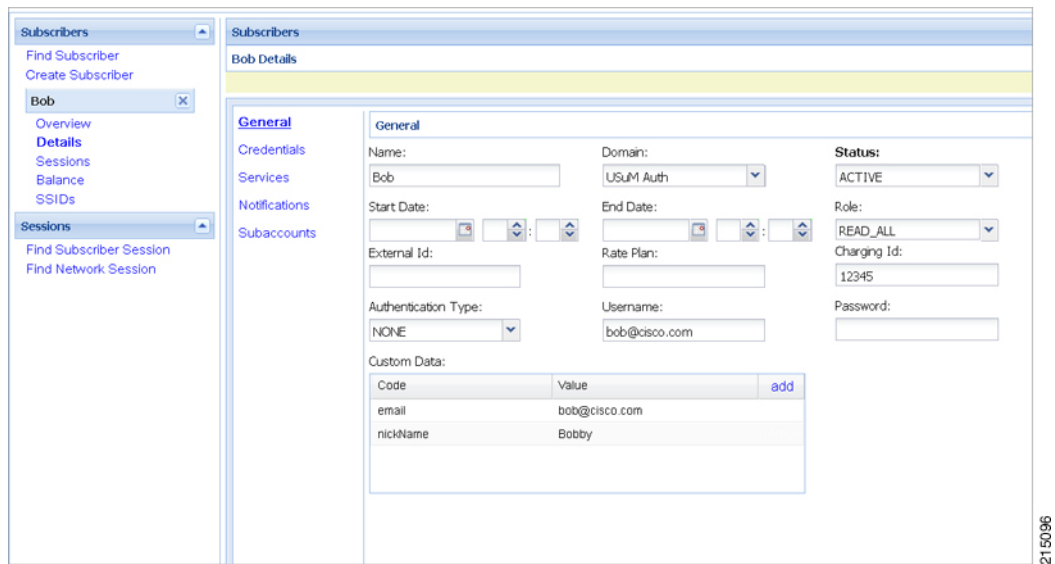
For the email, select from the “Pull value from...” column.

Figure 5: Subscriber AVP code Email Values



For reference, our subscriber has a Custom Data AVP set in the details of his subscriber record. This is where the value is being pulled from in Control Center.

Figure 6: Subscriber General Details



**Logging**

```
2015-05-01 14:34:46,345 [pool-2-thread-1] DEBUG c.b.n.impl.NotificationsManager.? - Email
encoding : UTF8
2015-05-01 14:34:46,345 [pool-2-thread-1] DEBUG c.b.n.impl.NotificationsManager.? - Email
Text body : Date/Time: 1430512486305
Dear bob@cisco.com, your new session has started
2015-05-01 14:34:46,345 [pool-2-thread-1] DEBUG c.b.n.impl.NotificationsManager.? - Email
HTML body : <br/><br/>
Date/Time: 1430512486305
<br/><br/>
<b>Dear bob@cisco.com, your new session has started.</b>
```

To use Email Notifications, we need to configure Service Options.

For more information on the configuration, refer to [Service Option Configuration, on page 26](#).



# Multiple Email Notification Configuration

## Configure Notifications

This section describes how to configure CPS to send email notifications to multiple email servers.

When multiple email servers are configured, CPS utilizes a round-robin selection scheme to distribute the email notifications to subscribers. No weighting is used when selecting the email servers from the configured pool.

If CPS detects that the running status of an email server is DOWN, CPS will automatically skip this server and send the notifications to the next email server. If a message cannot be delivered by an email server, CPS will retry the same message to the next email server.



---

**Note** In a CPS High Availability deployment, where two Policy Director (load balancer) VMs (lb01 and lb02) are used, each Policy Director operates a separate notification service. As a result, email notifications are first balanced across each Policy Director, and then each Policy Director delivers the message to an email server in a round robin fashion. This can result in concurrent messages being delivered to the same email server.

---

The following SNMP Notifications (Alarms) are used to monitor these email server connections. Refer to *CPS SNMP and Alarms Guide*, Release 9.1.0 and prior releases or *CPS SNMP, Alarms and Clearing Procedures Guide*, Release 10.0.0 and later releases for more information.

- AllEmailNotificationServerDown
- AtLeastOneEmailNotificationServerUp
- EmailNotificationServerDown
- EmailNotificationServerUp

To generate the SNMP Notifications (alarms), you need to configure

`-dnotification.interface.monitor.emailserver=true` in `/etc/broadhop/qns.conf` file. After configuring the parameter, run the following commands:

```
/var/qps/install/current/scripts/build_all.sh
```

```
/var/qps/install/current/scripts/upgrade/reinit.sh
```



---

**Note** Before continuing with these steps to add a pool of email servers, first remove the Primary and Secondary servers configured under the Email Notification section of Policy Builder.

---

To configure a pool of email server connections that CPS uses to send email notifications to subscribers:

1. Login to Policy Builder.
2. Go to **Reference Data > Systems > a system or a cluster > Plugin Configurations > Notification Configuration**.
3. Click the check box next to **Multiple Email Notification Configuration**.

4. View the Notification Configuration screen that drops down.
5. Click **Add** to add an email server to the list.

**Figure 7: Multiple Email Notification Configuration**

| *Mail Server Address | Login | Password | *Enable T L S            | *Smt p Port |
|----------------------|-------|----------|--------------------------|-------------|
| 10.10.10.1           | admin | •••••    | <input type="checkbox"/> | 25          |
| 10.10.10.2           | admin | •••••    | <input type="checkbox"/> | 25          |

Buttons: Add, Remove, ↑, ↓

215091



**Note** Moving an entry up or down in the table reflects only the display order; it has no impact on the selection when processing email notifications.

The following parameters can be configured for each email server:

**Table 5: Email Notification Configuration Parameters**

| Parameter           | Description                                                                                                                              |
|---------------------|------------------------------------------------------------------------------------------------------------------------------------------|
| Mail Server Address | IP address or host name of the mail server to which the notification emails will be sent. Only IMAP email is supported at this time.     |
| Login/Password      | Enter any login and password information needed.                                                                                         |
| Enable TLS          | Enables transport layer security. This option is used for connecting to services other than basic IMAP services, such as Google's Gmail. |
| Smt p Port          | Specifies the SMTP port. This option is used for connecting to services other than basic IMAP services, such as Google's Gmail.          |

6. Go to [Configure Messages](#), to configure the message to be sent for the notification configuration.

## SMS Notifications

### Configure Notifications

CPS supports sending Short Message Service (SMS) notifications to one primary and one secondary SMSC server, or alternatively to a pool of SMSC servers.

See [Multiple SMSC Server Configuration](#)

The following section describes how to configure CPS to send SMS notifications to a primary SMSC server and a secondary SMSC server.

**Step 1** Login to Policy Builder.

**Step 2** Go to **Reference Data > Systems > a system or a cluster > Plugin Configurations > Notification Configuration**.

**Step 3** Click the check box next to **SMS Notification Configuration**.

**Step 4** View the Notification Configuration screen that drops down.

The following parameters can be configured under SMS Notification:

**Table 6: SMS Notification Parameters**

| Parameter                      | Description                                                                                                                                                                                                                                                                                                                                                                                                                                                                                                                                                                 |
|--------------------------------|-----------------------------------------------------------------------------------------------------------------------------------------------------------------------------------------------------------------------------------------------------------------------------------------------------------------------------------------------------------------------------------------------------------------------------------------------------------------------------------------------------------------------------------------------------------------------------|
| SMSC Host Address              | The TCP/IP address or host name of the SMPP server, that is, the URL of the SMSC host that pushes the SMS message.                                                                                                                                                                                                                                                                                                                                                                                                                                                          |
| SMSC Port                      | The TCP/IP port on the SMPP server to which the gateway connects.                                                                                                                                                                                                                                                                                                                                                                                                                                                                                                           |
| System ID                      | The user name for the gateway to use when connecting to the SMPP server                                                                                                                                                                                                                                                                                                                                                                                                                                                                                                     |
| Password                       | The password for the gateway to use when connecting to the SMPP server.                                                                                                                                                                                                                                                                                                                                                                                                                                                                                                     |
| System Type                    | An optional login parameter used only if required by the SMPP server. The SMPP system administrator provides this value, usually a short text string.                                                                                                                                                                                                                                                                                                                                                                                                                       |
| Registered Delivery            | Optional field for some custom deployments.                                                                                                                                                                                                                                                                                                                                                                                                                                                                                                                                 |
| DataCoding (Advanced Use Only) | Optional field for some custom deployments.<br>Data Coding can be used instead of the Message Encoding and the other DCS fields on the Notification message definition screen, but should be used with care.<br><b>Note</b> If it is necessary to use a specific value in this field for data coding, then the message alphabet information should be included in the Data Coding value per the SMS specification as well as any other necessary data coding information. The result is a combination of the capabilities of the SMSC and is not totally controlled by CPS. |
| Priority Flag                  | Optional field for some custom deployments.                                                                                                                                                                                                                                                                                                                                                                                                                                                                                                                                 |
| Binding Type                   | TX (transmit)<br>or<br>TRX (transceiver)                                                                                                                                                                                                                                                                                                                                                                                                                                                                                                                                    |

| Parameter           | Description                                                                                                                                                                                                                           |
|---------------------|---------------------------------------------------------------------------------------------------------------------------------------------------------------------------------------------------------------------------------------|
| Enquire Link Time   | Specifies the Enquire Link Timer value. The plug-in instance performs an Enquire Link operation to the SMSC to keep the connection alive. The time between inquiries is specified by this timer value. Default value is 5000 seconds. |
| Reconnect           | If checked, CPS will check connection to the SMSC at the interval specified in the “Reconnect Smsc Time” field.                                                                                                                       |
| Reconnect Smsc Time | The interval to check the connection to the SMSC, and reconnect if lost. This will check the primary and secondary if the secondary properties are set.                                                                               |

Other than the parameters mentioned in [Table 6: SMS Notification Parameters, on page 11](#), the user can configure the following parameters after selecting **Retry Configuration** check box.

The following parameters can be configured under Retry.

**Table 7: Retry Parameters**

| Parameter      | Description                                              |
|----------------|----------------------------------------------------------|
| No. Of Retries | Number of retries allowed to resubmit the message.       |
| Retry Interval | Interval in which message are resubmitted until success. |

Go to [Configure Messages](#), to configure the SMS message to be sent for the notification configuration done above.

## Configure Messages

To create the SMS to be sent by CPS, perform the following steps:

1. Select **Reference Data > Notifications > SMS Notifications**.
2. From right side, click **SMS Notification** under **Create Child** to open the pane.

The following parameters can be configured under **SMS Notification**:

**Table 8: SMS Notification Parameters**

| Parameter      | Description                                                                                         |
|----------------|-----------------------------------------------------------------------------------------------------|
| Name           | Name of the notification message. This name is used later in the policy definition to send the SMS. |
| Source Address | Source address of the SMS message.                                                                  |

| Parameter                                   | Description                                                                                                                                                                                                                                                                                                                                                                                                                                         |
|---------------------------------------------|-----------------------------------------------------------------------------------------------------------------------------------------------------------------------------------------------------------------------------------------------------------------------------------------------------------------------------------------------------------------------------------------------------------------------------------------------------|
| Callback Number                             | <p>This is an optional field. This parameter is used to configure the callback number adhering to specification. The input format is a hexadecimal string. It will correspond to the exact hexadecimal sent in the stream.</p> <p>Currently, only a single callback number is supported.</p> <p>For more information, refer to <a href="#">SMS Notification Extension</a>.</p>                                                                      |
| Address TON                                 | <p>Type of Number for the source. It defines the format of the phone numbers.</p> <p>Values: ABBREVIATED, ALPHANUMERIC, INTERNATIONAL, NATIONAL, NETWORK_SPECIFIC, SUBSCRIBER_NUMBER, UNKNOWN</p>                                                                                                                                                                                                                                                   |
| Address NPI                                 | <p>Numbering Plan Indicator. It defines the format of the addresses.</p> <p>Values: DATA, ERMES, INTERNET, ISDN, LAND_MOBILE, NATIONAL, PRIVATE, TELEX, UNKNOWN, WAP</p>                                                                                                                                                                                                                                                                            |
| Message Class (DCS)                         | <p>The message class per the SMPP specification. Valid values are CLASS0, CLASS1, CLASS2. Default value is CLASS1.</p>                                                                                                                                                                                                                                                                                                                              |
| Message Encoding (DCS)                      | <p>Defines the alphabet and byte encoding used for the message. Valid values are US-ASCII (7 bit), ISO-8859-1 (8 bit), and UTF-16 (UCS-2) which is 16 bit. Default value is US-ASCII.</p>                                                                                                                                                                                                                                                           |
| Override Character Limit (Advanced)         | <p>Some SMSCs create multi-part messages for long SMS messages instead of having CPS create the multiple messages. This option provides such behavior by overriding the default single message size.</p> <p>This option is for advanced use only. The reason is that if space in the message submitted from CPS does not allow for header information, such as the User Data Header (UDH), then many SMSC are not accepted the messages at all.</p> |
| Compressed (DCS)                            | <p>Select this check box to set whether compression is used per the SMPP specification. Default is false.</p>                                                                                                                                                                                                                                                                                                                                       |
| Use Plugin Config Data Coding Instead (DCS) | <p>Select this check box when you want to use the value specified in Data Coding field in the Notifications Configuration screen instead of the Message Class, Message Encoding, Compressed, and Contain Message Class values on this screen.</p>                                                                                                                                                                                                   |
| Contain Message Class                       | <p>Select this check box to set whether the contain message class options is used per the SMPP specification. Default is false.</p>                                                                                                                                                                                                                                                                                                                 |

| Parameter                                           | Description                                                                                                                                                                                                                                                                                                                                                                                                                                                                                                                                                                                                                                                                                                                                                                            |
|-----------------------------------------------------|----------------------------------------------------------------------------------------------------------------------------------------------------------------------------------------------------------------------------------------------------------------------------------------------------------------------------------------------------------------------------------------------------------------------------------------------------------------------------------------------------------------------------------------------------------------------------------------------------------------------------------------------------------------------------------------------------------------------------------------------------------------------------------------|
| Use Message Encoding with Plugin Config Data Coding | <p>Select this check box when the “Use Plugin Config Data Coding Instead” check box above is checked. The check box “Use Plugin Config Data Coding Instead” must be true to use this value.</p> <p>This check box allows the Message Encoding value on this screen to define the byte conversion method that is used in conjunction with the Data Coding value in the Notifications Configuration screen.</p> <p>By default, the byte conversion method is US-ASCII regardless of the Plugin Configuration’s Data Coding value. Other UTF-16 conversions may use Big Endian, Little Endian or Byte Order Mark (BOM).</p> <p>This field is also important for ensuring the proper division of messages, particularly for non-English languages, for multi-part SMS message support.</p> |
| Message                                             | <p>The text that the subscriber receives.</p> <p>SMS messages have character limits dependent on the selected DCS values. Text in excess of this limit triggers the submission of the multi-part messages to the SMSC.</p>                                                                                                                                                                                                                                                                                                                                                                                                                                                                                                                                                             |

### WAP Settings

WAP push over SMS has been added to facilitate another way of initiation of notification from ANDSF server to the client (UE).

**Figure 8: WAP Push Configuration**

WAP Push Configuration (WAP Push via SMS)

**Version**  
1.0

**UI Mode**  
INFORMATIVE

**Initiator**  
SERVER

**Session Id Length**  
16

**SessionID**  
( prefixed with zeros if less than configured length )  
\$sessionId

**ServerID**  
WAP\_SERVER\_2

215081

The following parameters can be configured under **WAP Push Configuration**:

Table 9: WAP Push Configuration Parameters

| Parameter         | Description                                                                                                                                                                                                                                                                                                                                                                                                                                                                                                                                                                                                                                                                                                                                                                                                                                                                                                                                                                                      |
|-------------------|--------------------------------------------------------------------------------------------------------------------------------------------------------------------------------------------------------------------------------------------------------------------------------------------------------------------------------------------------------------------------------------------------------------------------------------------------------------------------------------------------------------------------------------------------------------------------------------------------------------------------------------------------------------------------------------------------------------------------------------------------------------------------------------------------------------------------------------------------------------------------------------------------------------------------------------------------------------------------------------------------|
| Version           | String, version of WAP message. This can be updated to reflect changes. For example, 1.0, 2.0, 2.1.<br><br>No characters are allowed. Only numbers or '.' are allowed.                                                                                                                                                                                                                                                                                                                                                                                                                                                                                                                                                                                                                                                                                                                                                                                                                           |
| UI Mode           | (User Interactive Mode): This field specifies the server recommendations whether the server wants the management session to be executed in background or show a notification to the user.<br><br>Values: NOT_SPECIFIED, INFORMATIVE, BACKGROUND, USER_INTERACTION<br><br>Default is NOT_SPECIFIED. <ul style="list-style-type: none"> <li>• NOT_SPECIFIED: Specifies that the server doesn't have a recommendation to this element.</li> <li>• INFORMATIVE: Specifies that the server recommends the client to display an informative notification or maybe emitting a beep sound announcing the beginning of the provisioning session to the device user.</li> <li>• BACKGROUND: Specifies that the server recommends the management action SHOULD be done as a background event.</li> <li>• USER_INTERACTION: Specifies that the server recommends the client to prompt the device user for acceptance of the offered management session before the management session takes place.</li> </ul> |
| Initiator         | Specifies how the server has interpreted the initiation of the management action, either because the end user requested it or because the server has management actions to perform. Value from drop down is added to the WAP message and does not trigger any action on the CPS side. <ul style="list-style-type: none"> <li>• Client: Specifies that the end user caused the device management session to start.</li> <li>• Server: Specifies that the server (operator, enterprise) caused the device management session to start.</li> </ul>                                                                                                                                                                                                                                                                                                                                                                                                                                                  |
| Session Id Length | Integer - Up to 16                                                                                                                                                                                                                                                                                                                                                                                                                                                                                                                                                                                                                                                                                                                                                                                                                                                                                                                                                                               |
| SessionID         | Session Id is 16 bits which is 2 ASCII character according to the specification. However, there is no restriction on ANDSF session-id size, it can be of any length. In PB, session-id length is made configurable per notification template (Shown in snapshot above). When actual session id length is greater than the configured size then the notification would not be sent and an error would be logged.<br><br>However, if session is less than the configured size, then zero would be prefixed in order to make sure that it satisfies session-id length configured in PB. It is assumed that the client would strip off the prefix and send the server initiated policy pull.                                                                                                                                                                                                                                                                                                         |

| Parameter | Description                                                                                                                                  |
|-----------|----------------------------------------------------------------------------------------------------------------------------------------------|
| ServerID  | String - Up to 255 Characters<br>The field specifies the Server Identifier of the management server. For example, "Server_1", "WAP_SERVER_2" |

For more information on WAP fields, click [WAP Fields](#).

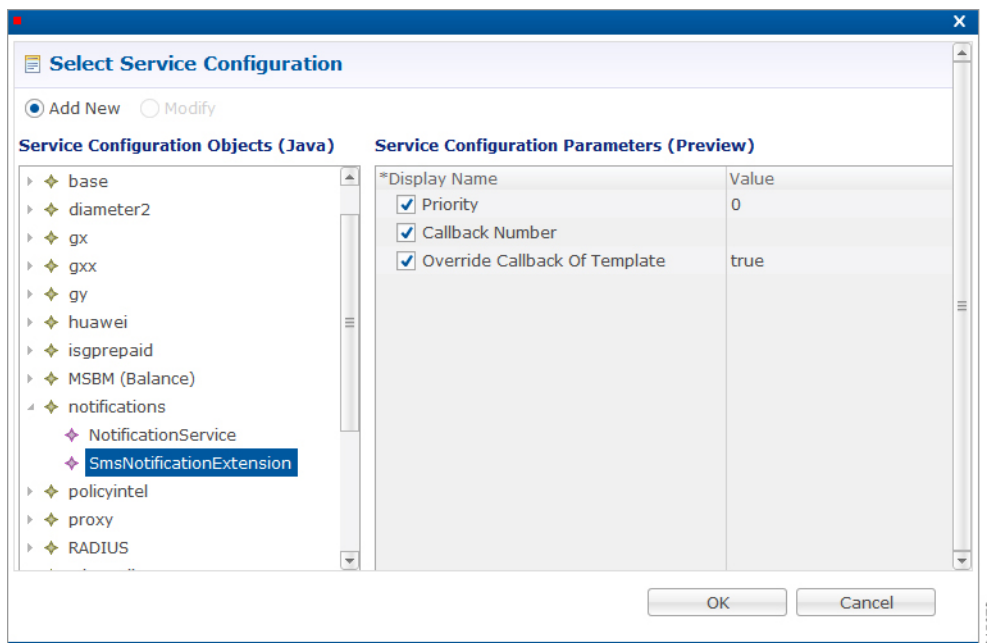
To use SMS Notifications, we need to configure **Service Options**.

For more information on the configuration, refer to [Service Option Configuration, on page 26](#).

## SMS Notification Extension

A new Service Configuration named as SmsNotificationExtension has been added. Note that since its an extension, it needs the base NotificationService also configured as a part of the main service for it to fetch the base template details. For example, an operator can specify their call-center number for subscribers to call back.

**Figure 9: Select Service Configuration**



The following parameters are configured under **SmsNotificationExtension**:

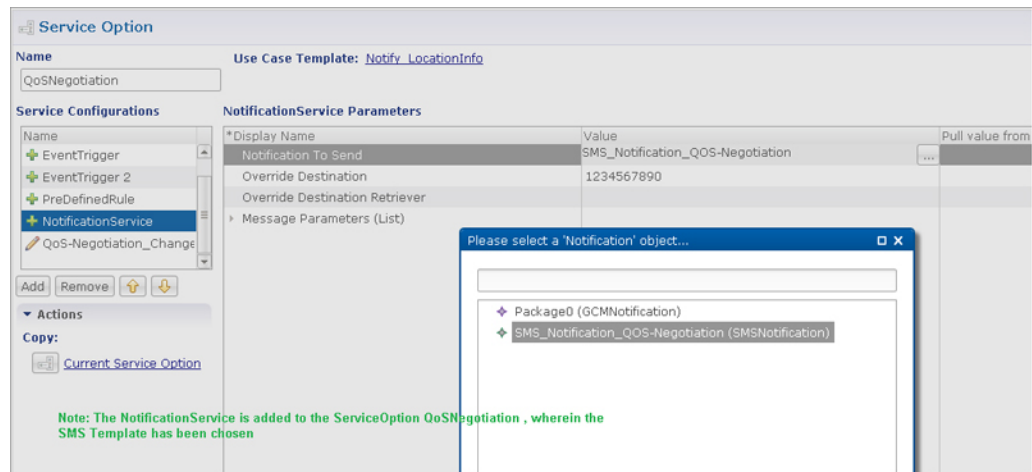


Table 10: SmsNotificationExtension Parameters

| Parameter                     | Description                                                                                                                                                                                                                                                                                                                                                                |
|-------------------------------|----------------------------------------------------------------------------------------------------------------------------------------------------------------------------------------------------------------------------------------------------------------------------------------------------------------------------------------------------------------------------|
| Priority                      | If there are multiple SMS Notification Extension configurations, this parameter will decide which Service configuration and corresponding parameter values to use. Higher the value, higher precedence it will have. For example, if there are two extension templates having priority as 1 and 2 each, the one with priority value 2 will be used.<br>Default value is 0. |
| Callback Number               | This is the service configuration level value for the callback number. This will satisfy the need of overriding the template value.<br><b>Note</b> Callback Number must be the exact hexadecimal string converted value of the call back number sent in the stream.<br>Currently, only a single callback number is supported.                                              |
| Override Callback Of Template | This parameter helps to decide whether to use the service configuration callback number to override the template or not.<br>Default value is true.                                                                                                                                                                                                                         |

Configure a service with the base Notification Service and select the SMS Notification Template.

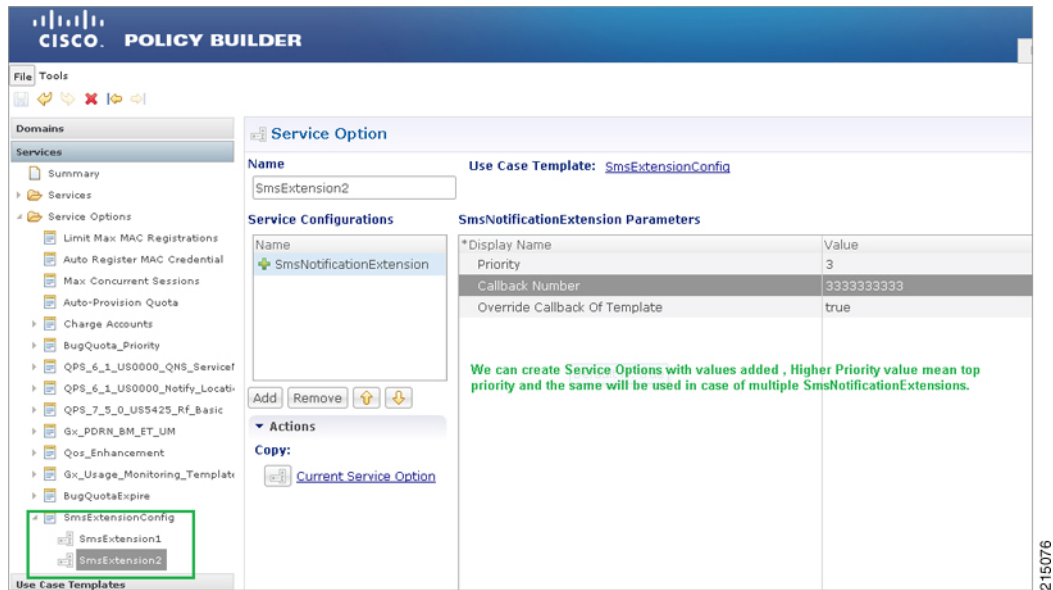
Figure 10: Notification Object



Create a Use Case Template using the new SMS Extension.

Add multiple extensions at service option level and configure the corresponding values.

Figure 11: SMS Extension Configuration



Configure a Service which has the NotificationService configured with corresponding SMS Template chosen and on top we can add the other SMSExtensions.

## Multiple SMSC Server Configuration

### Configure Notifications

This section describes how to configure CPS to send SMS notifications to multiple SMSC servers.

When multiple SMSC servers are configured, CPS utilizes a round-robin selection scheme to distribute the SMS notifications to subscribers. No weighting is used when selecting the SMSC servers from the configured pool.

If CPS detects that the running status of an SMSC server is DOWN, or if the SMSC server is marked disabled in the Policy Builder interface, CPS will automatically skip this server and send the messages to the next SMSC server. If a message cannot be sent to an SMSC server, CPS will retry to send it to the next SMSC server.

In the event that an SMSC server goes down, CPS can also be configured to reconnect to the server automatically. The frequency at which CPS will attempt to reconnect is also configurable.



#### Note

In a CPS High Availability deployment, where two Policy Director (load balancer) VMs (lb01 and lb02) are used, each Policy Director operates a separate notification service. As a result, SMS notifications are first balanced across each Policy Director, and then each Policy Director delivers the message to an SMSC server in a round robin fashion. This can result in concurrent SMS messages being delivered to the same SMSC server.

The following SNMP Notifications (Alarms) have been introduced to monitor the SMSC server connections. Refer to *CPS SNMP and Alarms Guide*, Release 9.1.0 and prior releases or *CPS SNMP, Alarms and Clearing Procedures Guide*, Release 10.0.0 and later releases for more information.

- AllSMSCNotificationServerDown
- AtLeastOneSMSCNotificationServerUp
- SMSCNotificationServerDown
- SMSCNotificationServerUp



**Note** Before continuing with these steps to add a pool of SMSC servers, first remove the Primary and Secondary servers configured under the SMS Notification Configuration section of Policy Builder.

To configure CPS to send SMS notifications to a pool of SMSC servers:

1. Login to Policy Builder.
2. Go to **Reference Data > Systems > a system or a cluster > Plugin Configurations > Notification Configuration**.
3. Click the check box next to **Multiple SMSC Server Configuration**.
4. View the Notification Configuration screen that drops down.
5. Click **Add** to add an SMSC server to the list.



**Note** Moving an entry up or down in the table reflects only the display order; it has no impact on the selection when processing SMS notifications.

The following parameters can be configured for each SMSC server:

**Table 11: SMSC Server Parameters**

| Parameter         | Description                                                                                                                                                                           |
|-------------------|---------------------------------------------------------------------------------------------------------------------------------------------------------------------------------------|
| Admin Status      | This field allows the operator to disable a specific SMSC server without removing the configuration entirely. If a server is disabled, CPS will not send any SMS notifications to it. |
| SMSC Host Address | The TCP/IP address or host name of the SMPP server, that is, the URL of the SMSC host that pushes the SMS message.                                                                    |
| SMSC Port         | The TCP/IP port on the SMPP server to which the gateway connects.                                                                                                                     |
| Binding Type      | TX (transmit)<br>or<br>TRX (transceiver)                                                                                                                                              |
| System ID         | The user name to use when connecting to the SMSC server                                                                                                                               |

| Parameter                      | Description                                                                                                                                                                                                                                                                                                                                                                                                                                                                                                                                                                         |
|--------------------------------|-------------------------------------------------------------------------------------------------------------------------------------------------------------------------------------------------------------------------------------------------------------------------------------------------------------------------------------------------------------------------------------------------------------------------------------------------------------------------------------------------------------------------------------------------------------------------------------|
| Password                       | The password to use when connecting to the SMSC server.                                                                                                                                                                                                                                                                                                                                                                                                                                                                                                                             |
| Enquire Link Time              | Specifies the time between Enquiry Link operations in seconds. CPS performs an Enquire Link operation to the SMSC server to keep the connection alive.<br>Default: 5000 seconds.                                                                                                                                                                                                                                                                                                                                                                                                    |
| System Type                    | An optional login parameter used only if required by the SMSC server. The SMSC system administrator provides this value, usually a short text string.                                                                                                                                                                                                                                                                                                                                                                                                                               |
| Registered Delivery            | Optional field for some custom deployments.                                                                                                                                                                                                                                                                                                                                                                                                                                                                                                                                         |
| DataCoding                     | Optional field for some custom deployments.<br><br>Data Coding can be used instead of the Message Encoding and the other DCS fields on the Notification message definition screen, but should be used with care.<br><br><b>Note</b> If it is necessary to use a specific value in this field for data coding, then the message alphabet information should be included in the Data Coding value per the SMS specification as well as any other necessary data coding information. The result is a combination of the capabilities of the SMSC and is not totally controlled by CPS. |
| Priority Flag                  | Optional field for some custom deployments.                                                                                                                                                                                                                                                                                                                                                                                                                                                                                                                                         |
| Reconnect SMSC SMS             | If checked, CPS will attempt to reconnect to an SMSC server if the connection was lost or server was down.                                                                                                                                                                                                                                                                                                                                                                                                                                                                          |
| Reconnect SMSC Timer (seconds) | The interval in which CPS will attempt to reconnect to the SMSC server.<br>Default: 300 seconds                                                                                                                                                                                                                                                                                                                                                                                                                                                                                     |

Refer to [Configure Messages](#), to configure the SMS message to be sent for the notification configuration done above.

## Real Time Notifications

Real time Notifications allows you to send SOAP/XML and REST/JSON messages to a defined server when policy thresholds are breached. The information related to real time notification is provided in the following feature files:

- For AIO Setup:

In `/etc/broadhop/pb/features:`

- `com.broadhop.client.feature.notifications`

In `/etc/broadhop/pcrf/features:`

- `com.broadhop.notifications.local.feature`
- `com.broadhop.notifications.realtime.service.feature`

- com.broadhop.notifications.service.feature
- For HA Setup:
  - In /etc/broadhop/pb/features:
    - com.broadhop.client.feature.notifications
  - In /etc/broadhop/pcrf/features:
    - com.broadhop.notifications.local.feature
  - In /etc/broadhop/iomanager/features:
    - com.broadhop.notifications.realtime.service.feature
    - com.broadhop.notifications.service.feature

## Configure Notifications

- Step 1** Log in to Policy Builder.
- Step 2** Go to **Reference Data > Systems > a system or a cluster > Plugin Configurations > Notification Configuration**.
- Step 3** Click the check box next to **Realtime Notification Configuration**.
- Step 4** View the Notification Configuration screen that drops down

The following parameters can be configured under Realtime Notification Configuration.

**Table 12: Realtime Notification Configuration Parameters**

| Parameter                                            | Description                                                                                                                                                                                                                                                                                                                             |
|------------------------------------------------------|-----------------------------------------------------------------------------------------------------------------------------------------------------------------------------------------------------------------------------------------------------------------------------------------------------------------------------------------|
| Failed Notifications Directory                       | File system path where failed notifications are stored. So when CPS is not able to send notification on both Server URL and Server Fallback URL then that notification is stored in this path.<br><br>The path to the failed notifications directory needs to be created manually on Policy Directors (load balancers) (lb01 and lb02). |
| Max Storage allowed for failed Notifications (in MB) | Maximum size up to which CPS can store failed notifications in the failed notifications directory.                                                                                                                                                                                                                                      |

Go to [Configure Messages, on page 21](#), to configure the realtime notification message to be sent for the notification configuration done above.

## Configure Messages

To create the realtime notification to be sent by CPS, perform the following steps:

**Step 1** Select **Reference Data > Notifications > Real Time Notifications**.

**Step 2** On the right-hand-side panel, click **Real Time Notification** under **Create Child** to open the Notifications pane.

**Figure 12: Real Time Notifications**

**Real Time Notification**

**\*Name** RealTime1 **No Of Retries** 3

**Retry Interval (secs)** 3 **Content Type** text/xml

**User Name** username **Password** .....

Send Once Per Session

**Server URL** http://172.31.0.1:7576/test

**Server Fallback URL**

**HTTP Post Parameter name (Keep this field blank if not applicable, Eg: SOAP/REST)**

**Payload Template (Text/XML/JSON)**

```
<?xml version="1.0" encoding="utf-8"?>
<soapenv:Envelope xmlns:soapenv="http://schemas.xmlsoap.org/soap/envelope/" xmlns:ser="http://localhost:8080/dataTest/services/">
<soapenv:Header/>
<soapenv:Body>
<ser:NewServiceStartedRequest>
<UserId>$userId</UserId>
<Balance>$balance</Balance>
<Quota>$quota</Quota>
<Timestamp>$timeStamp</Timestamp>
</ser:NewServiceStartedRequest>
</soapenv:Body>
</soapenv:Envelope>
```

The following parameters can be configured under Real Time Notifications:

**Table 13: Real Time Notifications Parameters**

| Parameter             | Description                                                                                                                                                                                                                         |
|-----------------------|-------------------------------------------------------------------------------------------------------------------------------------------------------------------------------------------------------------------------------------|
| Name                  | Name of the real-time notification message.                                                                                                                                                                                         |
| No of Retries         | When CPS sends real-time notification to the provided Server URL and if it is not reachable then this field specifies how many times CPS should send the notification. Same is true for Server Fallback URL.<br>Default value is 3. |
| Retry Interval (secs) | The time to wait between retries configured in the <b>No of Retries</b> field.<br>Default value is 3.                                                                                                                               |

| Parameter                                                                 | Description                                                                                                                                                                                                                                                                                                                                                                                                                                                                                                                                                                                                                                                               |
|---------------------------------------------------------------------------|---------------------------------------------------------------------------------------------------------------------------------------------------------------------------------------------------------------------------------------------------------------------------------------------------------------------------------------------------------------------------------------------------------------------------------------------------------------------------------------------------------------------------------------------------------------------------------------------------------------------------------------------------------------------------|
| Content Type                                                              | <p>The content type is set based on the type of the payload template (Text/XML/JSON). You can select the following:</p> <ul style="list-style-type: none"> <li>• text/xml</li> <li>• application/json</li> <li>• application/x-www-form-urlencoded</li> </ul> <p>The content type that you choose must match the template in the <b>Payload Template</b> field. The default value is text/xml.</p>                                                                                                                                                                                                                                                                        |
| User Name                                                                 | <p>The user name for accessing the endpoint specified in the <b>Server URL</b> and <b>Server Fallback URL</b> fields.</p> <p>If no user name is required, leave this field blank.</p>                                                                                                                                                                                                                                                                                                                                                                                                                                                                                     |
| Password                                                                  | <p>The password for accessing the endpoint specified in the <b>Server URL</b> and <b>Server Fallback URL</b> fields.</p> <p>If no password is required, leave this field blank.</p>                                                                                                                                                                                                                                                                                                                                                                                                                                                                                       |
| Send Once Per Session                                                     | <p>If checked, real-time notifications are generated for each session and not for all messages within that session.</p> <p>Default value is true.</p>                                                                                                                                                                                                                                                                                                                                                                                                                                                                                                                     |
| Server URL                                                                | Primary URL where CPS sends real-time notifications.                                                                                                                                                                                                                                                                                                                                                                                                                                                                                                                                                                                                                      |
| Server Fallback URL                                                       | When the Primary URL is not reachable, CPS tries to send notification to this URL for the configured <b>No of Retries</b> . When the number of retries are exhausted, CPS tries to send notification to the Server Fallback URL.                                                                                                                                                                                                                                                                                                                                                                                                                                          |
| HTTP Post Parameter name<br>(Keep this field if not applicable, Eg: SOAP) | For SOAP this field is not applicable and hence should be blank. This field specifies the HTTP Post parameter name.                                                                                                                                                                                                                                                                                                                                                                                                                                                                                                                                                       |
| Payload Template<br>(Text/XML/JSON)                                       | <p>This field contains the payload template, so real-time notifications are generated using the configured template. CPS provides values to the fields specified in the template from the ongoing session. For all fields that are specified in the template with values found, the real-time notification is generated.</p> <p>The names of the variables/placeholders defined here must match with the notification service parameter codes defined in service parameters of the corresponding use case template.</p> <p>You should also ensure that the correct value retriever is selected for each notification service parameter code in the use case template.</p> |

The following example shows a JSON payload template for reference only.

```
{
  "notifications": [
    {
```

```

    "ctn_id": "$msisdn",
    "eventType": "$eventType",
    "eventData": {
      "services": ["$service"]
    }
  }
}
]
}

```

Configure the NotificationService parameters in a use case template that pertains to the JSON example above.

**Figure 13: NotificationService Parameter Configuration for JSON Example**

**Use Case Template**

Name: CNSNotificationTemplate

Use Case Initiators | **Actions** | Documentation

**Service Configurations**

Name

- + NotificationService

Add Remove ↑ ↓

**Actions**

▼ Actions

**Create Child:**

- Use Case Option

**Copy:**

- Current Use Case Template

**NotificationService Parameters**

| *Display Name                  | Value                       | Bind Field | Allow Override                      |
|--------------------------------|-----------------------------|------------|-------------------------------------|
| Notification To Send           | CNSNotifications            |            | <input checked="" type="checkbox"/> |
| Override Destination           |                             |            | <input checked="" type="checkbox"/> |
| Override Destination Retriever |                             |            | <input checked="" type="checkbox"/> |
| Message Parameters (List)      |                             |            | <input checked="" type="checkbox"/> |
| MessageParameter               |                             |            | <input checked="" type="checkbox"/> |
| Code                           | msisdn                      |            | <input checked="" type="checkbox"/> |
| Value                          |                             |            | <input checked="" type="checkbox"/> |
| Value Retriever                | Session MSISDN              |            | <input checked="" type="checkbox"/> |
| MessageParameter               |                             |            | <input checked="" type="checkbox"/> |
| Code                           | eventType                   |            | <input checked="" type="checkbox"/> |
| Value                          |                             |            | <input checked="" type="checkbox"/> |
| Value Retriever                | Device Indicator Event Type |            | <input checked="" type="checkbox"/> |
| MessageParameter               |                             |            | <input checked="" type="checkbox"/> |
| Code                           | service                     |            | <input checked="" type="checkbox"/> |
| Value                          |                             |            | <input checked="" type="checkbox"/> |
| Value Retriever                | Device Indicator Service    |            | <input checked="" type="checkbox"/> |

Add Remove Add Child ↑ ↓

- The \$msisdn, \$eventType, and \$service notifications in the JSON example are added as **Code** values under **Message Parameters**.
- These values are pulled using the **Value Retriever** for each message parameter. Use the select box provided in each **Value Retriever** field to select the retrievers.
  - For **Code** type eventType, the **Value Retriever** is Device Indicator Event Type which allows the retrieval of event type. This is currently hard-coded to QoS\_Change.
  - For **Code** type service, the **Value Retriever** is Device Indicator Service which allows retrieval of service status (ON or OFF).
- For the **Notification To Send** parameter, select the Real Time Notification you want from the list.

The following example shows an XML payload template for reference only.

```
<?xml version="1.0" encoding="utf-8"?>
```



```

<soapenv:Envelope xmlns:soapenv="http://schemas.xmlsoap.org/soap/envelope/"
xmlns:ser="http://localhost:8080/dataTest/services/">
  <soapenv:Header/>
  <soapenv:Body>
    <ser:NewServiceStartedRequest>
      <UserId>$userId</UserId>
      <Balance>$balance</Balance>
      <Quota>$quota</Quota>
      <Timestamp>$timeStamp</Timestamp>
    </ser:NewServiceStartedRequest>
  </soapenv:Body>
</soapenv:Envelope>

```

Configure the NotificationService parameters in a use case template that pertains to the XML example above.

**Figure 14: NotificationService Parameter Configuration for XML Example**

**Use Case Template**

Name:

Use Case Initiators | **Actions** | Documentation

**Service Configurations**

- NotificationService

Buttons: Add, Remove, Up, Down

**NotificationService Parameters**

| *Display Name                  | Value                  | Bind Field | Allow Override                      |
|--------------------------------|------------------------|------------|-------------------------------------|
| Notification To Send           | default                |            | <input checked="" type="checkbox"/> |
| Override Destination           |                        |            | <input checked="" type="checkbox"/> |
| Override Destination Retriever |                        |            | <input checked="" type="checkbox"/> |
| Message Parameters (List)      |                        |            | <input checked="" type="checkbox"/> |
| MessageParameter               |                        |            | <input checked="" type="checkbox"/> |
| Code                           | userId                 |            | <input checked="" type="checkbox"/> |
| Value                          |                        |            | <input checked="" type="checkbox"/> |
| Value Retriever                | Session User Name      |            | <input checked="" type="checkbox"/> |
| MessageParameter               |                        |            | <input checked="" type="checkbox"/> |
| Code                           | balance                |            | <input checked="" type="checkbox"/> |
| Value                          |                        |            | <input checked="" type="checkbox"/> |
| Value Retriever                | Balance Code Retriever |            | <input checked="" type="checkbox"/> |
| MessageParameter               |                        |            | <input checked="" type="checkbox"/> |
| Code                           | quota                  |            | <input checked="" type="checkbox"/> |
| Value                          |                        |            | <input checked="" type="checkbox"/> |
| Value Retriever                | Quota Code Retriever   |            | <input checked="" type="checkbox"/> |
| MessageParameter               |                        |            | <input checked="" type="checkbox"/> |
| Code                           | timeStamp              |            | <input checked="" type="checkbox"/> |
| Value                          |                        |            | <input checked="" type="checkbox"/> |
| Value Retriever                | Timestamp Retriever    |            | <input checked="" type="checkbox"/> |

Buttons: Add, Remove, Add Child, Up, Down

**Actions**

**Create Child:**

- Use Case Option

**Copy:**

- Current Use Case Template

- Adding substitute values into the message body.

To substitute any value into your message, add the character '\$' to the beginning of the variable name. For example, \$userName.

The XML Template example contains the \$userId, \$balance, \$quota, and \$timeStamp variables, which we will replace with values from the session and post to the Server URL defined in the Notifications Plugin.

- The Server URL is the destination of the message, and this is not set as an attribute of the subscriber like the other notifications.

- **Notification To Send:** Select the Real Time Notification you want from the list.

**Message Parameters (using the example XML payload template):**

- **userId:** This value is pulled using the Session User Name Retriever. Use the select box from the Value Retriever field.
- **balance:** This value is pulled using the Balance Code Retriever. Use the select box from the Value Retriever field.
- **quota:** This value is pulled using the Balance Code Retriever. Use the select box from the Value Retriever field.
- **timestamp:** This value is pulled using the Timestamp Retriever. Use the select box from the Value Retriever field.

For more information on service options, refer to [Service Option Configuration, on page 26](#).

---

## Service Option Configuration

This section provides an example Service Options configuration which can be used for SMS, EMAIL, Apple Push, and GMC notifications. The bodies of the messages are identical to make the service options parameters simpler to follow.

### Adding substitute values into the message body

To substitute any value into your message, add the character '\$' to the beginning of the variable name. For example, Ex. \$userName.

This set of substitute variables are used as an example for SMS, EMAIL, Apple Push, and GCM.

- \$timeStamp
- \$userId
- \$nickName

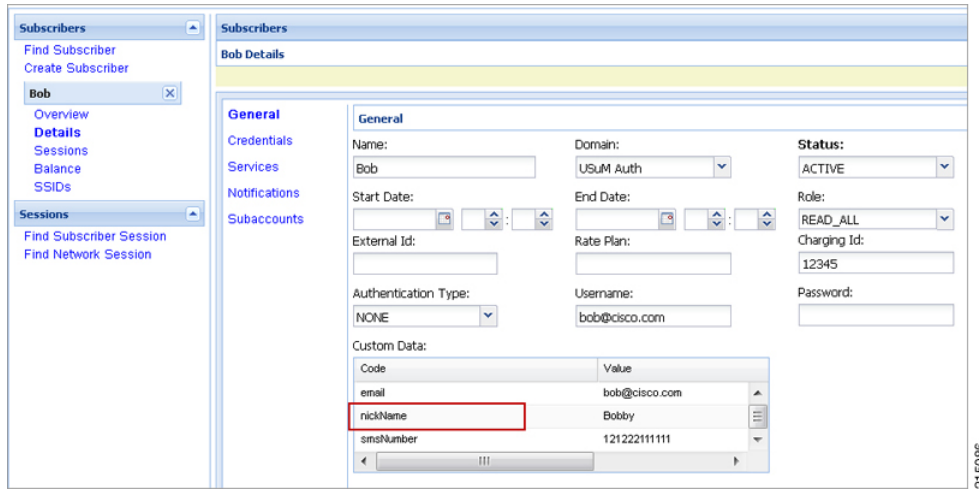
You assign the variables their value using the Notification Service Parameters.

There are four values provide for the example configuration:

- **Notification To Send:** Select the Notification you want from the list.
- **Timestamp:** This value is pulled using Timestamp Retriever. Use the select box from the Value Retriever field.
- **userId:** This value is pulled using Session User Name Retriever. Use the select box from the Value Retriever field.
- **Nickname:** We are filling this value using the Subscriber AVP Code action, pulling from the Custom Data attached to the subscriber. You can see these values in the Control Center.

nickName example: Custom AVP in the Control Center

Figure 15: nickName Configuration

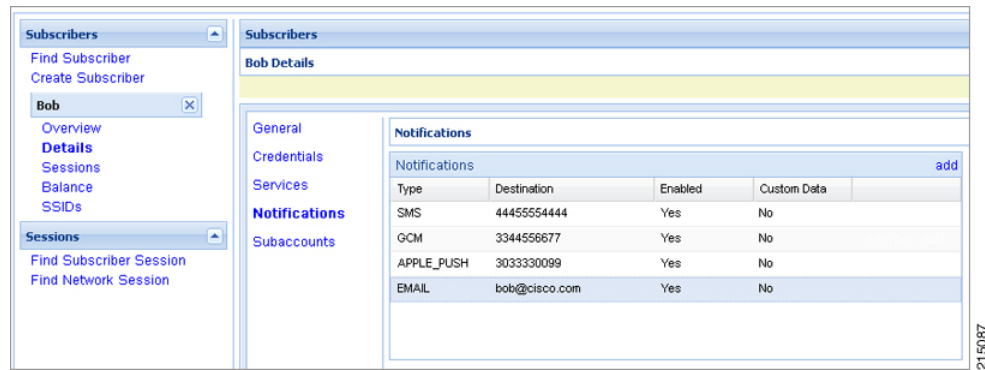


### Apple Push Notification Destination

By default, this notification will go the Destination set in the Notifications section under the subscriber details for the type of Notification being sent.

For example, an Apple Push message will go to Apple Push Destination, and SMS to SMS, and so on.

Figure 16: Notification Destinations



To override the destination set for the subscriber, you can use the **Override Destination** field in the Service Option.

## NAP Notification

CPS is enhanced to support decoding of the URL sent from the LDAP/NAP server.

**Create (Payload):**

```
%3C%3Fxml+version%3D%221.0%22+encoding%3D%22UTF-8%22+standalone%3D%22yes%22%3F%3E%3CCustomerTransactions%3E%3CCustomerTransaction%3E%3CTransactionInfo%3E%3CRequestedAction%3Ecreate%3C%2FRequestedAction%3E%3CCustomerID%3E200569444%3C%2FCustomerID%3E%3Cmsisdn%3E4047047821%3C%2Fmsisdn%3E%3CVersion%3E1.4%3C%2
```

```
FVersion%3E%3CTransactionID%3E5153654875871906187%3C%2FTransactionID%3E%3CVendorID%3E53%3C%2FVendorID%3E%3C%2FTransactionInfo%3E%3CAccountInfo%3E%3CCustomerID%3E200569444%3C%2FCustomerID%3E%3Cmsisdn%3E4047047821%3C%2Fmsisdn%3E%3Cimsi%3E310260399339533%3C%2Fimsi%3E%3Cban%3E932945358%3C%2Fban%3E%3CAccountType%3E%3C%2FAccountType%3E%3CAccountSubType%3E%3C%2FAccountSubType%3E%3CbillCyclePeriod%3E14%3C%2FbillCyclePeriod%3E%3CStatusCode%3EA%3C%2FStatusCode%3E%3CCustomerType%3E1%3C%2FCustomerType%3E%3CPAHmsisdn%3E4047047821%3C%2FPAHmsisdn%3E%3CLanguage%3Eeng%3C%2FLanguage%3E%3CPairingFlag%3E1%3C%2FPairingFlag%3E%3C%2FAccountInfo%3E%3CServiceInfo%3E%3CVendorID%3E53%3C%2FVendorID%3E%3CFeatures%3E%3CFeature%3E%3CName%3EB52ROAM%3C%2FName%3E%3C%2FFeature%3E%3C%2FFeatures%3E%3C%2FServiceInfo%3E%3C%2FCustomerTransaction%3E%3C%2FCustomerTransactions%3E
```

**After URL Decoding:**

```
<?xml+version="1.0"+encoding="UTF-8"+standalone="yes"?><CustomerTransactions><CustomerTransaction><TransactionInfo><RequestedAction>create</RequestedAction><CustomerID>200569444</CustomerID><msisdn>4047047821</msisdn><Version>1.4</Version><TransactionID>5153654875871906187</TransactionID><VendorID>53</VendorID></TransactionInfo><AccountInfo><CustomerID>200569444</CustomerID><msisdn>4047047821</msisdn><imsi>310260399339533</imsi><ban>932945358</ban><accountType>I</accountType><accountSubType>R</accountSubType><billCyclePeriod>14</billCyclePeriod><StatusCode>A</StatusCode><CustomerType>1</CustomerType><PAHmsisdn>4047047821</PAHmsisdn><Language>eng</Language><PairingFlag>1</PairingFlag></AccountInfo><ServiceInfo><VendorID>53</VendorID><Features><Feature><Name>B52ROAM</Name></Feature></Features></ServiceInfo></CustomerTransaction></CustomerTransactions>
```

The schema for such NAP notifications is not defined in a XSD but is a free flowing XML as defined by NAP. CPS has adapted its parsing code to ensure the entire XML is received and processed although only IMSI, service level and prepaid flag are submitted to the policy engine as LDAP change event message from the servlet.