



## Initial Gateway Setup

---

You can perform the initial gateway setup using either of the following methods:

- Using KVM, see [Connecting to Gateway for Setup, on page 1](#), or
- Using CIMC GUI, see [Configuring the Cisco Integrated Management Controller, on page 2](#)
- [Connecting to Gateway for Setup, on page 1](#)
- [Configuring the Cisco Integrated Management Controller, on page 2](#)
- [Connecting to Gateway Console Port, on page 6](#)

## Connecting to Gateway for Setup

### Before you begin

In this procedure, connect a keyboard and monitor directly to the system for setup. This procedure will use a KVM cable (Cisco PID N20-BKVM) or the ports on the rear panel.

### Procedure

---

- Step 1** Attach a power cord to each power supply ports, and then attach each power cord to a grounded power outlet.
- Wait for approximately two minutes to let the gateway boot to standby power during the first bootup. You can verify system power status by looking at the system Power Status LED on the front panel. The system is in standby power mode when the LED is amber.
- Step 2** Connect a USB keyboard and VGA monitor to the gateway using one of the following methods:
- Connect an optional KVM cable (Cisco PID N20-BKVM) to the KVM connector on the front panel. Connect your USB keyboard and VGA monitor to the KVM cable.
  - Connect a USB keyboard and VGA monitor to the corresponding connectors on the rear panel.
- Step 3** To connect with the Cisco IMC Configuration interface:
- a) Press and hold the front panel power button for four seconds to boot the gateway.
  - b) During bootup, press **F8** when prompted to open the Cisco IMC Configuration interface.

**Note**

The first time that you enter the Cisco IMC Configuration interface, you are prompted to change the default password. The default password is *password*.

The password feature is enabled. The following are the requirements for password:

- The password can have a minimum of 8 characters and a maximum of 14 characters.
- The password must not contain the user's name.
- The password must contain characters from three of the following four categories:
  - English uppercase letters (A through Z)
  - English lowercase letters (a through z)
  - Base 10 digits (0 through 9)
  - Non-alphabetic character:
    - ! (Exclamation mark)
    - @ (At sign)
    - # (Hashtag)
    - \$ (Dollar)
    - % (Percentage)
    - ^ (Circumflex)
    - & (Ampersand)
    - \* (Asterisk)
    - - (Minus sign)
    - \_ (Underscore)
    - = (Equal)
    - , (Comma)

**Step 4** By default, the Cisco IMC uses DHCP to receive the IP address of the device. To assign static IP address to CIMC using CLI, see the latest CLI configuration guide at [Cisco UCS C-Series Servers Integrated Management Controller](#).

---

## Configuring the Cisco Integrated Management Controller

Initially, the Cisco Integrated Management Controller (IMC) management port must be configured with a static IP address. To configure Cisco IMC, follow these steps:

## Procedure

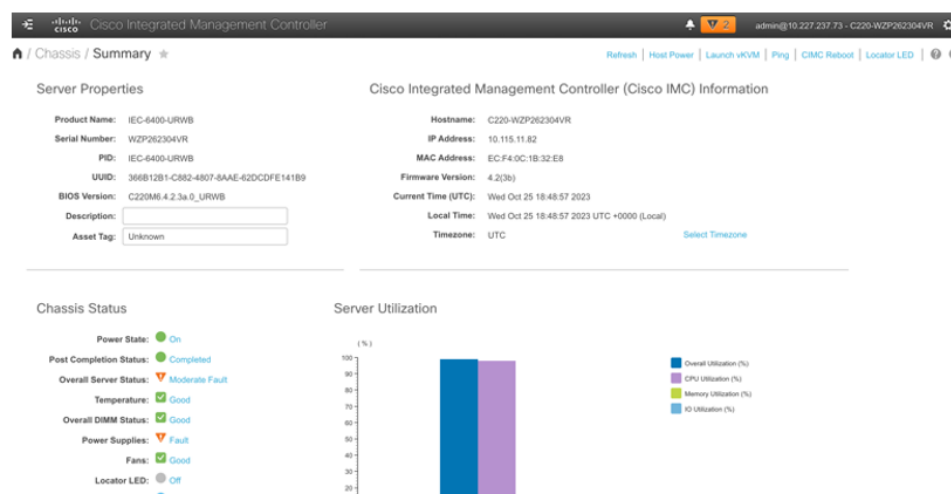
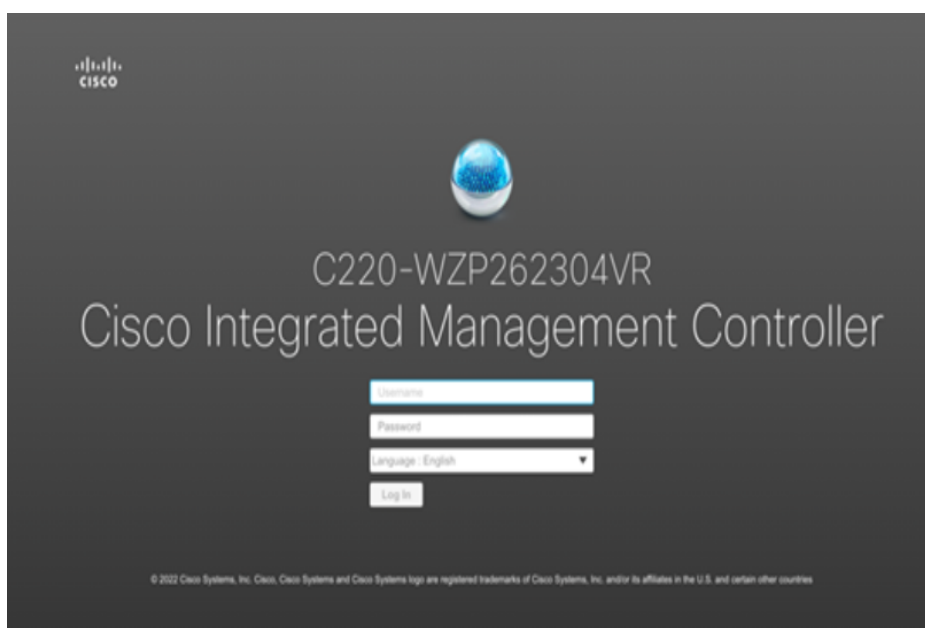
- Step 1** Connect the power cord to each power supply port, and then connect each power cord to the grounded power outlet. Wait for approximately two minutes during the first bootup for the gateway to enter standby power mode. The LED on the front panel turns to amber when the system is in standby power mode.
- Step 2** Plug your management ethernet cable into the dedicated management interface (port 9) on the rear panel.
- Step 3** Connect through the CIMC LAN management interface (port 9) to the network, which has a DHCP server, to obtain the IP address <a.b.c.d> of the device. Open the web browser and enter the following URL: [https://:<A.B.C.D>/](https://<A.B.C.D>)
- Step 4** (Or) Press and hold the power button for four seconds to boot the gateway.


**Note**

The first time that you enter the Cisco IMC configuration interface, you are prompted to change the default password. The default password is *password*.

The following are the requirements for password:

- The password must have minimum of 8 characters and a maximum of 14 characters.
- The password must not contain the user's name.
- The password must contain characters from three of the following four categories:
  - English uppercase letters (A through Z)
  - English lowercase letters (a through z)
  - Base 10 digits (0 through 9)
  - Non-alphabetic character:
    - ! (Exclamation mark)
    - @ (At sign)
    - # (Hashtag)
    - \$ (Dollar)
    - % (Percentage)
    - ^ (Circumflex)
    - & (Ampersand)
    - \* (Asterisk)
    - - (Minus sign)
    - \_ (Underscore)
    - = (Equal)
    - , (Comma)

**Step 5**

Click  at the left corner.  
A left pane appears.

**Step 6**

Go to **Admin > Networking**.  
A new **Network** page appears.

**Step 7** In the **IPv4 Properties**, uncheck the **Use DHCP** check box.

**Note**

Before you enable DHCP, you must preconfigure your DHCP server with the range of MAC addresses for this gateway. The NIC mode is **Dedicated** as there is a dedicated ethernet management port and it must not be changed.

**Step 8** Enter the **Management IP Address**, **Subnet Mask**, **Gateway**, **Preferred DNS Server**, and **Alternate DNS Server** fields.

The static IPv4 and IPv6 settings include the following:

- Cisco IMC IPv4 address
- Gateway IPv4 address

For IPv6, if you do not know the gateway, you can set it as none by entering :: (two colons).

- Preferred DNS server address

For IPv6, you can set this as none by entering :: (two colons).

**Step 9** (Optional) Update the **VLAN Properties**.

**Step 10** (Optional) Set a hostname for the server.

**Step 11** (Optional) Enable dynamic DNS and set a dynamic DNS (DDNS) domain.

**Step 12** Click **Save Changes**.

The device reboots and you must refresh the browser to establish connection with the new management IP address.

# Connecting to Gateway Console Port

To configure the gateway locally (without connecting to a wired LAN), connect the computer to the gateway's console port using a DB-9 to RJ-45 serial cable and to open the CLI by connecting to the gateway's console port, follow these steps:

## Procedure

**Step 1** Connect a nine-pin female DB-9 to RJ-45 serial cable on one side to the RJ-45 serial port on the gateway and the other side to the COM port on a computer.

**Step 2** Set up a terminal emulator to communicate with the gateway. In the terminal emulator, use the following settings:

Parameter	Value
Baud rate	115200 bps
Data	Eight bits
Parity	No
Stop	One stop bit
Flow Control	No

**Step 3** If you are logging in for the first time, use the standard command prompt (>) mode to execute unprivileged commands. Use the default username and password to login: Cisco.

### Note

Once the initial configuration completes, ensure that you remove the serial cable from the gateway.