



Cisco Mobility Services Engine Virtual Appliance Installation Guide for Cisco CMX Release 11.1.1

First Published: 2017-04-02

Last Modified: 2025-11-28

Americas Headquarters

Cisco Systems, Inc.
170 West Tasman Drive
San Jose, CA 95134-1706
USA
<http://www.cisco.com>
Tel: 408 526-4000
800 553-NETS (6387)
Fax: 408 527-0883

THE SPECIFICATIONS AND INFORMATION REGARDING THE PRODUCTS IN THIS MANUAL ARE SUBJECT TO CHANGE WITHOUT NOTICE. ALL STATEMENTS, INFORMATION, AND RECOMMENDATIONS IN THIS MANUAL ARE BELIEVED TO BE ACCURATE BUT ARE PRESENTED WITHOUT WARRANTY OF ANY KIND, EXPRESS OR IMPLIED. USERS MUST TAKE FULL RESPONSIBILITY FOR THEIR APPLICATION OF ANY PRODUCTS.

THE SOFTWARE LICENSE AND LIMITED WARRANTY FOR THE ACCOMPANYING PRODUCT ARE SET FORTH IN THE INFORMATION PACKET THAT SHIPPED WITH THE PRODUCT AND ARE INCORPORATED HEREIN BY THIS REFERENCE. IF YOU ARE UNABLE TO LOCATE THE SOFTWARE LICENSE OR LIMITED WARRANTY, CONTACT YOUR CISCO REPRESENTATIVE FOR A COPY.

The Cisco implementation of TCP header compression is an adaptation of a program developed by the University of California, Berkeley (UCB) as part of UCB's public domain version of the UNIX operating system. All rights reserved. Copyright © 1981, Regents of the University of California.

NOTWITHSTANDING ANY OTHER WARRANTY HEREIN, ALL DOCUMENT FILES AND SOFTWARE OF THESE SUPPLIERS ARE PROVIDED "AS IS" WITH ALL FAULTS. CISCO AND THE ABOVE-NAMED SUPPLIERS DISCLAIM ALL WARRANTIES, EXPRESSED OR IMPLIED, INCLUDING, WITHOUT LIMITATION, THOSE OF MERCHANTABILITY, FITNESS FOR A PARTICULAR PURPOSE AND NON-INFRINGEMENT OR ARISING FROM A COURSE OF DEALING, USAGE, OR TRADE PRACTICE.

IN NO EVENT SHALL CISCO OR ITS SUPPLIERS BE LIABLE FOR ANY INDIRECT, SPECIAL, CONSEQUENTIAL, OR INCIDENTAL DAMAGES, INCLUDING, WITHOUT LIMITATION, LOST PROFITS OR LOSS OR DAMAGE TO DATA ARISING OUT OF THE USE OR INABILITY TO USE THIS MANUAL, EVEN IF CISCO OR ITS SUPPLIERS HAVE BEEN ADVISED OF THE POSSIBILITY OF SUCH DAMAGES.

Any Internet Protocol (IP) addresses and phone numbers used in this document are not intended to be actual addresses and phone numbers. Any examples, command display output, network topology diagrams, and other figures included in the document are shown for illustrative purposes only. Any use of actual IP addresses or phone numbers in illustrative content is unintentional and coincidental.

All printed copies and duplicate soft copies of this document are considered uncontrolled. See the current online version for the latest version.

Cisco has more than 200 offices worldwide. Addresses and phone numbers are listed on the Cisco website at www.cisco.com/go/offices.

Cisco and the Cisco logo are trademarks or registered trademarks of Cisco and/or its affiliates in the U.S. and other countries. To view a list of Cisco trademarks, go to this URL: <https://www.cisco.com/c/en/us/about/legal/trademarks.html>. Third-party trademarks mentioned are the property of their respective owners. The use of the word partner does not imply a partnership relationship between Cisco and any other company. (1721R)

© 2025 Cisco Systems, Inc. All rights reserved.



Preface

- [Audience, on page iii](#)
- [Conventions, on page iii](#)
- [Related Documentation, on page iv](#)
- [Communications, services, and additional information, on page iv](#)

Audience

This document is for network administrators who configure Cisco Connected Mobile Experiences (Cisco CMX) services.

Cisco CMX is the on-premise location service that is provided as part of the Cisco Spaces overall location as a platform service.

Conventions

This document uses the following conventions:

Table 1: Conventions

Convention	Indication
bold font	Commands and keywords and user-entered text appear in bold font .
<i>italic font</i>	Document titles, new or emphasized terms, and arguments for which you supply values are in <i>italic font</i> .
[]	Elements in square brackets are optional.
{x y z }	Required alternative keywords are grouped in braces and separated by vertical bars.
[x y z]	Optional alternative keywords are grouped in brackets and separated by vertical bars.
string	A nonquoted set of characters. Do not use quotation marks around the string. Otherwise, the string will include the quotation marks.
<code>courier font</code>	Terminal sessions and information the system displays appear in <code>courier font</code> .

Convention	Indication
<>	Nonprinting characters such as passwords are in angle brackets.
[]	Default responses to system prompts are in square brackets.
!, #	An exclamation point (!) or a pound sign (#) at the beginning of a line of code indicates a comment line.



Note Means reader take note. Notes contain helpful suggestions or references to material not covered in the manual.



Tip Means the following information will help you solve a problem.



Caution Means reader be careful. In this situation, you might perform an action that could result in equipment damage or loss of data.

Related Documentation

- For more information about Cisco Connected Mobile Experiences (Cisco CMX), see:
<http://www.cisco.com/c/en/us/solutions/enterprise-networks/connected-mobile-experiences/index.html>.
- For more information about Cisco Mobility Services Engine and related products, see:
<http://www.cisco.com/c/en/us/support/wireless/mobility-services-engine/tsd-products-support-series-home.html>.
- For more information about Cisco CMX Rest APIs, see:
<https://developer.cisco.com/docs/cisco-cmx-v11-0-0/>.
- For more information about Cisco Spaces, see [Cisco Spaces support](#) page.

Communications, services, and additional information

- To receive timely, relevant information from Cisco, sign up at [Cisco Profile Manager](#).
- To get the business impact you're looking for with the technologies that matter, visit [Cisco Services](#).
- To submit a service request, visit [Cisco Support](#).
- To discover and browse secure, validated enterprise-class apps, products, solutions, and services, visit [Cisco DevNet](#).
- To obtain general networking, training, and certification titles, visit [Cisco Press](#).
- To find warranty information for a specific product or product family, access [Cisco Warranty Finder](#).

Cisco Bug Search Tool

[Cisco Bug Search Tool](#) (BST) is a gateway to the Cisco bug-tracking system, which maintains a comprehensive list of defects and vulnerabilities in Cisco products and software. The BST provides you with detailed defect information about your products and software.

Documentation feedback

To provide feedback about Cisco technical documentation, use the feedback form available in the right pane of every online document.



CONTENTS

PREFACE

Preface	iii
Audience	iii
Conventions	iii
Related Documentation	iv
Communications, services, and additional information	iv
Cisco Bug Search Tool	v
Documentation feedback	v

CHAPTER 1

Installing Cisco CMX	1
Installing Cisco CMX in a VMware Virtual Machine	1
Virtualization Concepts	1
Installation Overview	1
Restrictions for Installing Cisco CMX in a VMware Virtual Machine	2
Cisco CMX Virtual Appliance Deployment Checklist	2
Prerequisites for Installing Cisco CMX in a VMware Virtual Machine	3
Hardware Guidelines	3
Release Upgrade Compatibility Matrix	4
VM Alerts	7
Downloading the Cisco CMX OVA File	7
Deploying the Cisco CMX OVA File Using the VMware vSphere Web Client	7
Configuring Cisco CMX Release 11.1.1	16
Verifying Installation of Cisco CMX in a VMware Virtual Machine	21

CHAPTER 2

Virtual Machine Setup and Administration	23
Adding a Hard Disk to a Virtual Machine in the vSphere Client	23
Configuring the Network	23

Reconfiguring CPU and RAM for Cisco CMX installation 23

CHAPTER 3

Upload Cisco CMX ISO Image to Cisco CMX 3375 appliance 25

Mount the Cisco ISO image 25

Deploy the Cisco CMX 11 ISO image to Cisco CMX 3375 31

CHAPTER 4

Upload Cisco CMX ISO Image to an M6 appliance 45

Mount the Cisco ISO image on an M6 appliance 45

Deploy a Cisco CMX 11 ISO image on an M6 appliance 50



CHAPTER 1

Installing Cisco CMX

- [Installing Cisco CMX in a VMware Virtual Machine, on page 1](#)

Installing Cisco CMX in a VMware Virtual Machine

This chapter describes how to install and deploy a Cisco Mobility Services Engine (MSE) virtual appliance.

Cisco CMX is a prebuilt software solution that comprises one or more virtual machines (VMs) that are packaged, maintained, updated, and managed as a single unit. Cisco CMX is distributed as an Open Virtual Appliance (OVA) for installation on a virtual appliance and as an ISO image for installation on a physical appliance.

Cisco CMX acts as a platform (physical or virtual Cisco Mobility Services Engine [MSE] appliance) to deploy and run the Cisco services.

If you choose Location during installation, you will see the following services in Cisco CMX GUI.

- DETECT & LOCATE—Active for 120 day trial period unless either a CMX base or advanced license is added.
- ANALYTICS—Active for 120 day trial period unless a CMX advanced license is added.

Virtualization Concepts

Refer to these documents for information on virtualization:

- [Virtualization Overview](#)
- [Setting Up ESXi](#)
- [Virtualization Basics](#)

Installation Overview

The following table lists the Cisco CMX virtual appliance installation process and contains information about the sections providing details about them:

Table 2: Installation Overview

Step	Task	See
1	Review the deployment checklist and prepare for the installation of a Cisco CMX virtual appliance.	Cisco CMX Virtual Appliance Deployment Checklist, on page 2 and Hardware Guidelines, on page 3
2	Download the Cisco CMX Open Virtualization Archive (OVA) file from Cisco.com.	Downloading the Cisco CMX OVA File, on page 7
3	Deploy the Cisco CMX OVA file.	Deploying the Cisco CMX OVA File Using the VMware vSphere Web Client, on page 7
4	Configure the basic configurations and install the Cisco CMX virtual appliance.	Configuring Cisco CMX Release 11.1.1, on page 16



Note Performing a Cisco CMX installation over high latency links might not work in a reliable manner. If you want to install Cisco CMX on a remote location, we recommend that you load the ISO to a remote file server that can be accessed locally by the remote server.

Restrictions for Installing Cisco CMX in a VMware Virtual Machine

- Map size must be less than 5 MB in Cisco Prime Infrastructure.
- There must be less than 1000 access points on a single map.
- The Mobile Application Server is not available.
- The Wireless Intrusion Prevention System (wIPS) is available with limited feature support. From 10.4 release onwards, Cisco CMX supports rogue access points and rogue clients.
- A common NTP server must be used to synchronize the time.
- Simple Mail Transfer Protocol (SMTP) Mail Server name and authentication mechanism must be used for the Cisco CMX mail notification system.
- VMware vSphere Storage API - Data Protection (VADP) hypervisor clone feature is not supported

Cisco CMX Virtual Appliance Deployment Checklist

- Cisco Wireless Controller has IP connectivity to a Cisco CMX instance.
- Cisco Prime Infrastructure has IP connectivity to a Cisco CMX instance.
- Port 16113 is routable from Cisco WLC to the Cisco CMX IP address.
- Port 161 (for Simple Network Management Protocol [SNMP] traffic) is routable from Cisco WLC to the Cisco CMX IP address.
- SSH client to log in with the root access to the VM is present.

- A Secure Copy (SCP) client (on MAC native or installed on PC) or a Secure File Transfer Protocol (SFTP) exists to move files into Cisco CMX OVA (specifically, map files and images to upgrade).
- Ensure that UDP port 2003 is routable from Cisco WLC to Cisco CMX IP addresss for hyperlocation .

**Note**

If you are using Cisco 3365 CMX Appliance and need to deploy Cisco CMX 10.5, you can only restore a backup file of maximum 200GB. If your backup file size is more than 200GB, we recommend that you add external disks or perform a selective backup for restoring Cisco CMX data.

Prerequisites for Installing Cisco CMX in a VMware Virtual Machine

- VMWare vSphere client.
- Cisco 11.1.1 OVA, which can be downloaded from [Download Software](#) page on cisco.com.
- Hostname IP address, netmask, default gateway, DNS IP address, and Network Time Protocol (NTP) Server IP address or name.

Hardware Guidelines

The following table lists the hardware guidelines for the Cisco CMX virtual appliance.

**Note**

If the hardware requirements are not met, the OVA deployment fails. Similarly, the Cisco CMX setup fails during installation when the other minimum requirements listed in the table below are not met.

Table 3: Hardware Guidelines

Hardware Platform	Basic Appliance	Standard Appliance	High-End Appliance
CPU	8 vCPU (2.4 GHz core)	16 vCPU (2.4 GHz core)	20 vCPU (2.4 GHz core)
RAM	24 GB	48 GB	64 GB ¹
HDD ²	550 GB	550 GB	1 TB

¹ The high-end deployment VM (20 vCPU, 64 GB RAM) reserves 63.74 GB for itself and the rest of the RAM is used by ESXi.

² For Cisco CMX OVA installation, 250 GB is the default HDD (hard disk drive) on low-end, standard and high-end virtual machines. We strongly recommend immediately after deploying the OVA file and before powering on the VM that you increase the disk space to the recommended amount as described in the above table, so that the HDD resource does not run low while using Cisco CMX. If you do not increase the disk space before powering on the VM, refer to the VMWare 6.7 guidelines on how to increase disk space: https://docs.vmware.com/en/VMware-vSphere/6.7/com.vmware.vsphere.vm_admin.doc/GUID-79116E5D-22B3-4E84-86DF-49A8D16E7AF2.html



Note We recommend you to allocate the required HDD space. For more information, see [Deploying the Cisco CMX OVA File Using the VMware vSphere Web Client, on page 7](#).

Release Upgrade Compatibility Matrix

The following table lists the Cisco CMX releases available on Cisco.com.

Table 4: Cisco CMX Releases Available on Cisco.com

Cisco CMX Release	OVA	3365 ISO	3375 ISO	Upgrade Option Only
10.1.0	cmx-v10-1-0.ova	—		—
10.1.1	—	10.1.1		—
10.1.1-2	—	—		cisco_cmx-10.1.1-2.tar.gz (cisco_cmx-10.1.1-2.x86_64.rpm and cisco_cmx_connect-10.1.1-30.x86_64.rpm)
10.1.2	—	—		cisco_cmx-10.1.1-2.tar.gz
10.2	10.2 OVA	10.2 ISO		10.2 backend upgrade (10.1 and 10.1.1 to 10.2) script and.CMX image file
10.3	10.3 OVA	10.3 ISO		—
10.4	10.4 OVA	10.4 ISO		—
10.5	10.5 OVA	10.5 ISO		No direct upgrade option. New OVA/ISO System
10.6	10.6 OVA	10.6 ISO	10.6 ISO	—
11.0.0	11.0.0 OVA	11.0.0 ISO	11.0.0 ISO	—
11.0.1	11.0.1 OVA	11.0.1 ISO	11.0.1 ISO	—
11.1.0	11.1.0 OVA	—	11.1.0 ISO	—
11.1.1	11.1.1 OVA	—	—	—

Table 5: Node Types Supported Per Release

Release	Location and Analytics Node	Location and Connect Node	Location, Analytics, and Connect Node (L-Node)	Connect and Presence Node (P-Node)	High Availability
10.1.0	Yes	—	—	—	—
10.1.1-2	Yes	Yes	Yes	—	—
10.1.2	Yes	Yes	Yes	—	—
10.2	Use the upgrade script to change Location and Analytics to Location, Analytics, and Connect internally.	Use the upgrade script to change Location and Connect to Location, Analytics, and Connect internally.	Yes	Yes	—
10.3	Use the upgrade script to change Location and Analytics to Location, Analytics, and Connect internally.	Use the upgrade script to change Location and Connect to Location, Analytics, and Connect internally.	Yes	Yes	Yes
10.4	Use the upgrade script to change Location and Analytics to Location, Analytics, and Connect internally.	Use the upgrade script to change Location and Connect to Location, Analytics, and Connect internally.	Use the upgrade script to change Location and Connect to Location, Analytics, and Connect internally.	Yes	Yes
10.5	No direct upgrade is available. New OVA/ISO system upgrade	No direct upgrade is available. New OVA/ISO system upgrade	Yes	Yes	Yes
10.6	Use the upgrade script to change Location and Analytics to Location, Analytics, and Connect internally.	Use the upgrade script to change Location and Connect to Location, Analytics, and Connect internally.	Yes	Yes	Yes

Table 6: Upgrade Path by Node Type

Upgrade Path 1 ³	Location and Connect Node	Location and Analytics Node	Location, Analytics, and Connect Node (L-Node)	Connect and Presence Node (P-Node)

10.1.0 OVA to 10.2	10.2 backend script to upgrade image to 10.2 and change Location and Connect to Location, Connect, and Analytics.	10.2 backend script to upgrade image to 10.2 and change Location and Analytics to Location, Connect, and Analytics.	10.2 backend script to upgrade image to 10.2.	—
10.1.1-2 tar.gz to 10.2	10.2 backend script to upgrade image to 10.2 and change Location and Connect to Location, Connect, and Analytics.	10.2 backend script to upgrade image to 10.2 and change Location and Analytics to Location, Connect, and Analytics.	10.2 backend script to upgrade image to 10.2.	—
10.1.2 tar.gz to 10.2	10.2 backend script to upgrade image to 10.2 and change Location and Connect to Location, Connect, and Analytics.	10.2 backend script to upgrade image to 10.2 and change Location and Analytics to Location, Connect, and Analytics.	10.2 backend script to upgrade image to 10.2.	—
10.2 OVA/ISO to 10.3	—	—	UI upgrade script to upgrade image.	UI upgrade script to upgrade image
10.3 OVA/ISO to 10.4	—	—	UI upgrade script to upgrade image.	UI upgrade script to upgrade image
10.5 OVA/ISO	—	—	UI upgrade script to upgrade image.	UI upgrade script to upgrade image
10.6 OVA/ISO	—	—	UI upgrade script to upgrade image.	<p>Upgrade is supported from the Cisco CMX Release 10.5.x to Cisco CMX Release 10.6.</p> <p>Note Releases earlier than Cisco CMX Release 10.5 cannot be upgraded to Cisco CMX Release 10.6, for example Cisco CMX Release 10.4.1 cannot be upgraded to Cisco CMX Release 10.6.</p>

³ The path that is provided for upgrade is the same as that used for backup and restore.

VM Alerts

The following table displays the alerts shown on the VM for the following conditions:

Table 7: VM Alerts

Hard Disk Status	Alert Shown
50 percent	Do Not Back Up
80 percent	System Is About To Run Out Of Space
85 percent	All The Services Are Stopped

Downloading the Cisco CMX OVA File

Procedure

-
- Step 1** Download the Cisco CMX image from the [Download Software](#) page on cisco.com.
- Step 2** Save the Cisco CMX OVA installer to your computer and ensure that it is accessible.
-

Deploying the Cisco CMX OVA File Using the VMware vSphere Web Client

The VMware vSphere Web Client (Flash/Flex client) manages the vCenter Server 6.5 environment with all the features and plugins. From VMware vSphere Release 6.5, we recommend that you use vSphere Web Client.

From VMware vSphere Release 6.5, the **thick client** is no longer supported. Only the vSphere Client (HTML 5) and vSphere Web Client are supported.

To deploy the Cisco CMX OVA file using the VMware vSphere Web Client, follow these steps.

Procedure

-
- Step 1** Launch the VMware vSphere Web Client application on your desktop.
- Step 2** From the **Navigators** pane, click **Create/Register VM** to create or register a virtual machine (VM).
The **Deploy OVF Template** window is displayed.
- Step 3** In the **Select an OVF Template** section, click the **Local file** radio button to browse to a local directory, select the Cisco CMX OVA file that is stored locally, and click **Next**.
This helps you create a VM from a Cisco CMX OVA file.

Figure 1: Select an OVF Template

Deploy OVF Template

1 Select an OVF template
2 Select a name and folder
3 Select a compute resource
4 Review details
5 Select storage
6 Ready to complete

Select an OVF template
Select an OVF template from remote URL or local file system

Enter a URL to download and install the OVF package from the Internet, or browse to a location accessible from your computer, such as a local hard drive, a network share, or a CD/DVD drive.

☐ URL

☒ Local file

Browse... CISCO_CMX-11.0.0.q ova

CANCEL BACK NEXT

Step 4 In the **Select a name and folder** section, enter the following information and click **Next**.

- **Virtual machine name:** Enter a name for the VM.
- **Select a location for the virtual machine:** Select a location for VM.

Figure 2: Select a Name and Folder

The screenshot displays the 'Deploy OVF Template' wizard. On the left, a progress list shows six steps: 1. Select an OVF template (checked), 2. Select a name and folder (highlighted in blue), 3. Select a compute resource, 4. Review details, 5. Select storage, and 6. Ready to complete. The main area is titled 'Select a name and folder' and includes the instruction 'Specify a unique name and target location'. Below this, the 'Virtual machine name' field contains 'cisco-cmx-11'. The 'Select a location for the virtual machine' section shows a tree view with 'CMX Lab' expanded, listing subfolders: 'ALMA-OS-CMX-VMS', 'CMX Development Servers', 'CMX Templates', and 'DNA Spaces Connectors'. At the bottom right, there are 'CANCEL', 'BACK', and 'NEXT' buttons.

Step 5

In the **Select a compute resource** section, select the destination data store for the VM configuration files and virtual disks and click **Next**.

Figure 3: Select a Compute Resource

Deploy OVF Template

✓ 1 Select an OVF template

✓ 2 Select a name and folder

3 Select a compute resource

4 Review details

5 Select storage

6 Ready to complete

Select a compute resource

Select the destination compute resource for this operation

CMX Lab

1

2

3

4

5

6

7

8

9

10

11

12

13

14

15

16

17

18

19

20

21

22

23

24

25

26

27

28

29

30

31

32

33

34

35

36

37

38

39

40

41

42

43

44

45

46

47

48

49

50

51

52

53

54

55

56

57

58

59

60

61

62

63

64

65

66

67

68

69

70

71

72

73

74

75

76

77

78

79

80

81

82

83

84

85

86

87

88

89

90

91

92

93

94

95

96

97

98

99

100

Compatibility

✓ Compatibility checks succeeded.

CANCEL

BACK

NEXT

Step 6

In the **License agreements** section, click the **I accept all license agreements** check box to accept the End User License Agreement and click **Next**.

Figure 4: License Agreements

Deploy OVF Template

- ✓ 1 Select an OVF template
- ✓ 2 Select a name and folder
- ✓ 3 Select a compute resource
- ✓ 4 Review details
- 5 License agreements**
- 6 Configuration
- 7 Select storage
- 8 Select networks
- 9 Ready to complete

License agreements
The end-user license agreement must be accepted.

Read and accept the terms for the license agreement.

We will reserve part of the resources of CPU and memory based on your OVA selection.

Low-end VMSE:
8 vCPUs. 8000 Mhz will be reserved.
24 GB Memory. 24 GB will be reserved.

Standard VMSE:
16 vCPUs. 16000 Mhz will be reserved.
48 GB Memory. 48GB will be reserved.

High-end VMSE:
20 vCPUs. 20000 Mhz will be reserved.
64 GB Memory. 64GB will be reserved.

☒ I accept all license agreements.

CANCEL BACK NEXT

Step 7 In the **Select storage** section, select the storage for the configuration and disk files and click **Next**.

Figure 5: Select Storage

Deploy OVF Template

- ✓ 1 Select an OVF template
- ✓ 2 Select a name and folder
- ✓ 3 Select a compute resource
- ✓ 4 Review details
- ✓ 5 License agreements
- ✓ 6 Configuration
- 7 Select storage**
- 8 Select networks
- 9 Ready to complete

Select storage
Select the storage for the configuration and disk files

☐

Select virtual disk format: Thick Provision Lazy Zeroed

VM Storage Policy:

Name	Capacity	Provisioned	Free	Type	Cluster
datastore-124	11.45 TB	13.89 TB	364.41 GB	VMFS 5	

Compatibility

✓ Compatibility checks succeeded.

CANCEL BACK NEXT

Step 8

In the **Select Networks** section, from the **Destination Network** drop-down list, choose a destination network for each source network and click **Next**.

Figure 6: Select Networks

The screenshot displays the 'Deploy OVF Template' wizard in the VMware vSphere Web Client. The wizard consists of nine steps, with the first seven completed and the eighth, 'Select networks', currently active. The 'Ready to complete' section is visible at the bottom of the steps list. The main content area is titled 'Select networks' and includes the instruction 'Select a destination network for each source network.' Below this, there is a table with two columns: 'Source Network' and 'Destination Network'. The 'Source Network' column has a value of 'NAT'. The 'Destination Network' column has a dropdown menu showing a selected network. Below the table, the 'IP Allocation Settings' section is visible, showing 'IP allocation:' set to 'Static - Manual' and 'IP protocol:' set to 'IPv4'. At the bottom right of the wizard, there are three buttons: 'CANCEL', 'BACK', and 'NEXT'.

Deploy OVF Template

- ✓ 1 Select an OVF template
- ✓ 2 Select a name and folder
- ✓ 3 Select a compute resource
- ✓ 4 Review details
- ✓ 5 License agreements
- ✓ 6 Configuration
- ✓ 7 Select storage
- 8 Select networks**
- 9 Ready to complete

Select networks

Select a destination network for each source network.

Source Network	Destination Network
NAT	<div>▼</div> <div>1 items</div>

IP Allocation Settings

IP allocation: Static - Manual

IP protocol: IPv4

CANCEL BACK NEXT

Step 9

In the **Ready to complete** section, review the settings and click **Finish**. Do not refresh the browser when the VM is deployed.

Figure 7: Ready to Complete

Deploy OVF Template

✓ 1 Select an OVF template
 ✓ 2 Select a name and folder
 ✓ 3 Select a compute resource
 ✓ 4 Review details
 ✓ 5 License agreements
 ✓ 6 Configuration
 ✓ 7 Select storage
 ✓ 8 Select networks
 9 Ready to complete

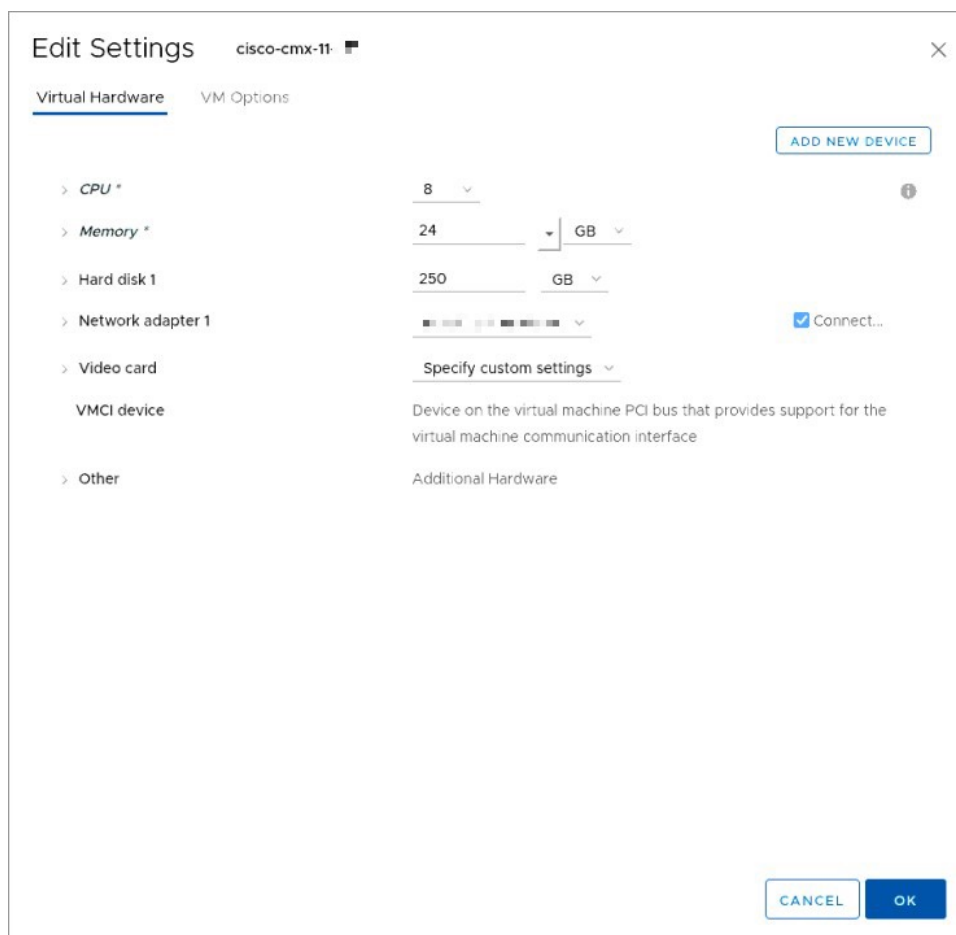
Ready to complete
Click Finish to start creation.

Provisioning type	Deploy from template
Name	cisco-cmx-11
Template name	cisco-cmx
Download size	8.6 GB
Size on disk	250.0 GB
Folder	ALMA-OS-CMX-VMS
Resource	
Storage mapping	1
All disks	Datastore: datastore-124; Format: Thick provision lazy zeroed
Network mapping	1
NAT	
IP allocation settings	
IP protocol	IPv4
IP allocation	Static - Manual

CANCEL BACK FINISH

Step 10 Click the deployed VM and choose **Actions > Edit Settings**.

Step 11 In the **Virtual Hardware** tab, in the **Hard disk 1** field, modify the provisioned size to match the instance requirement and click **OK**. The default size is 250 GB.

Figure 8: Hard Disk Provisioned Size**Note**

If the instance is powered on, it will display a warning message—Hard Disk Size Failure—for Standard and High End instances.

```

Restarting network...
Pinging 192.168.1.1 ..... Success
Pinging 192.168.1.2 ..... Success
Pinging 192.168.1.3 ..... Success
Network configuration completed successfully
*****
Checking if the machine meets required specification...
*****
+-----+-----+-----+-----+
| Check | Minimum Required | Actual | Result |
+-----+-----+-----+-----+
| Memory | 47GB              | 48GB   | 1      |
+-----+-----+-----+-----+
| CPU     | 16                | 16     | 1      |
+-----+-----+-----+-----+
| Disk    | 500GB             | 259GB  | 1      |
+-----+-----+-----+-----+
| hostname | RFC Compliant Hostname | test  | 1      |
+-----+-----+-----+-----+
!!!!!!!!!!!!!!!!!!!!!!!!!!!!!!!!!!!!!!
!!! Disk Check Size Failure !!!
!!!!!!!!!!!!!!!!!!!!!!!!!!!!!!!!!!!!!!
Do you wish to continue with disk size failure?: _

```

Step 12 Click **Power on** to power on the VM. The first boot takes a while because the new disk has to be expanded.

Figure 9: Power On VM



Configuring Cisco CMX Release 11.1.1

After the Cisco CMX is deployed, you can install and configure a Cisco CMX VM. Note the following points:

- Cisco CMX does not have a node install menu. However, there is a first-boot script that checks if a configuration exists on the device. If the script does not find a valid configuration, it launches the setup routine and initiates network configuration tasks using the CLI and completes the installation. You should not use the Web install.
- The new first-boot script determines if the initial configuration is completed, and then displays the normal login prompt. If the initial configuration is not completed, the default login prompt is displayed.



Note The **cmxctl node install** command is no longer valid.

To install and configure a Cisco CMX VM, follow these steps.

Procedure

Step 1 Right-click the Cisco CMX VM and click **Open Console**.

The initial boot displays two options, with the first option being selected by default. Retain the selection and wait for five seconds.

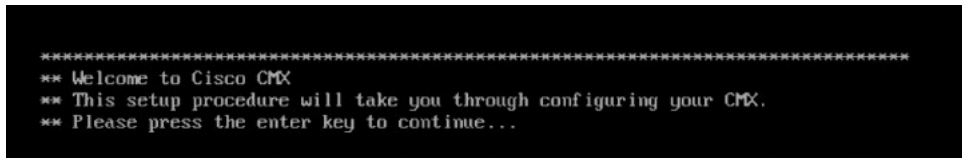
Step 2 Enter the login name **cmxadmin** and password **cisco**, as prompted.

Figure 10: Console



Step 3 Press **Enter** when prompted.

Figure 11: Press Enter



Step 4 Enter a new password for the root user and reconfirm it when prompted. The password should meet the minimum requirements listed on the screen.

Note

The root password is used only for the root operating system configuration and not for the cmxadmin user functions.

From Cisco CMX Release 10.6.3, you are not required to enter a new password for the root user.

Step 5 Enter a new password for the cmxadmin user and reconfirm it. The password should meet the minimum requirements listed on the screen.

Note

The cmxadmin password is used for logging into the Cisco CMX account for future network admin configurations.

Figure 12: Set Passwords

```

*****
** Welcome to Cisco CMX
** This setup procedure will take you through configuring your CMX.
** Please press the enter key to continue...

*****
** Adding default swap space - takes 5-20 minutes to complete
*****
[ 162.252954] Adding 10485756k swap on /swapfile1. Priority:-3 extents:1 across:10485756k FS
unable to load certificate
140500971604728:error:0906D06C:PEM routines:PEM_read_bio:no start line:pem_lib.c:697:Expecting: TRUSTED CERTIFICATE

** Password Specification
** Password must have 8 to 20 alphanumeric characters...
** ...starting with an alpha character
** Password must contain a digit and must also contain...
** ... a special character like !@#$%^&*()_

Setting new password for *cmxadmin*
Password:

```

Step 6

Enter the following network configuration parameters when prompted.

- Hostname
- IP Address
- Netmask
- Gateway
- DNS Server
- Search Domain Name

Figure 13: Network Configuration Parameters

```

*****
Configuring Network...
*****
Please enter hostname: cisco-cmx-11-
Please enter IP address: 1 1 . 1 . 1
Please enter netmask: 2 5 5 . 2 5 5 . 2 5 5 . 0
Please enter gateway: 1 9 2 . 1 6 8 . 1 . 1
Please enter DNS server: 1 9 2 . 1 6 8 . 1 . 1
Please enter search domain name: cisco.com
Are the network settings correct?: yes

```

Note

For a successful validation, hostname:

- can include a hyphen, however never end or start the hostname with a hyphen

- can include alphanumeric data
- cannot not start with a digit
- cannot not have special characters (for example, .,?,*,_)

Step 7 Confirm the network configurations when prompted.

Figure 14: Network Configuration

```

+-----+-----+-----+-----+
| Check | Minimum Required | Actual | Result |
+-----+-----+-----+-----+
| Memory | 236GB | 24GB | ■ |
+-----+-----+-----+-----+
| CPU | 8 | 8 | ■ |
+-----+-----+-----+-----+
| Disk | 250GB | 259GB | ■ |
+-----+-----+-----+-----+
| hostname | RFC Compliant Hostname | cisco-cmx-11- | ■ |
+-----+-----+-----+-----+

```

Step 8 (Optional) Enter the NTP server name or the IP address of the NTP server when prompted. You can also configure a second NTP server. Select **y** or **n** accordingly.

Figure 15: NTP Server Configuration

```

*****
Configuring NTP Server...
*****
Please enter the NTP server name (blank for no NTP server) []: ntp.esl.cisco.com
Setting ntp server ntp.esl.cisco.com
Do you want to add another NTP server? (y/n) (y, n): n
*****
Configuring Timezone and date...
*****
Please identify a location so that time zone rules can be set correctly.
Please select a continent or ocean.
1) Africa                      7) Australia
2) Americas                    8) Europe
3) Antarctica                  9) Indian Ocean
4) Arctic Ocean               10) Pacific Ocean
5) Asia
6) Atlantic Ocean
11) none - I want to specify the time zone using the POSIX TZ format.
12)

```

Note

After installation, use the **cmxos reconfigure** command from the CMX CLI to change the NTP information. Alternatively, you can use the **cmxos ntp type** command to configure only NTP settings.

Step 9 Configure a time zone and save the changes.

Figure 16: Configuring a Time Zone

```

*****
Configuring Timezone and date...
*****
Please identify a location so that time zone rules can be set correctly.
Please select a continent or ocean.
1) Africa
2) Americas
3) Antarctica
4) Arctic Ocean
5) Asia
6) Atlantic Ocean
7) Australia
8) Europe
9) Indian Ocean
10) Pacific Ocean
11) none - I want to specify the time zone using the Posix TZ format.
#? 5
Please select a country.
1) Afghanistan      14) India              27) Lebanon           40) Singapore
2) Armenia          15) Indonesia         28) Macau             41) Sri Lanka
3) Azerbaijan       16) Iran              29) Malaysia         42) Syria
4) Bahrain          17) Iraq              30) Mongolia         43) Taiwan
5) Bangladesh       18) Israel            31) Myanmar (Burma)  44) Tajikistan
6) Bhutan           19) Japan             32) Nepal            45) Thailand
7) Brunei           20) Jordan            33) Oman             46) Turkmenistan
8) Cambodia         21) Kazakhstan       34) Pakistan         47) United Arab Emirates
9) China            22) Korea (North)    35) Palestine        48) Uzbekistan
10) Cyprus          23) Korea (South)    36) Philippines      49) Vietnam
11) East Timor      24) Kuwait           37) Qatar            50) Yemen
12) Georgia         25) Kyrgyzstan       38) Russia
13) Hong Kong       26) Laos             39) Saudi Arabia
#? 14
The following information has been given:

    India

Therefore TZ='Asia/Kolkata' will be used.
Local time is now:   Wed Nov 19 11:51:51 IST 2025.
Universal Time is now: Wed Nov 19 06:21:51 UTC 2025.
Is the above information OK?
1) Yes
2) No
#? 1
The Timezone selected is Asia/Kolkata
The Timezone selected is Asia/Kolkata
The current time is Wed Nov 19 11:51:55 AM IST 2025

Enter Date (YYYY-mm-dd hh:mm:ss) (blank to sync with ntp): []:

** CMX will be rebooted automatically now to apply the changes

```

Step 10 Encrypt the /opt partition of the disk. For Cisco CMX Release 11.0.0, select N.

Note

Disk encryption is not supported in Cisco CMX Release 11.0.0. If you perform disk encryption, Cisco CMX Release 11.0.0 installation fails.

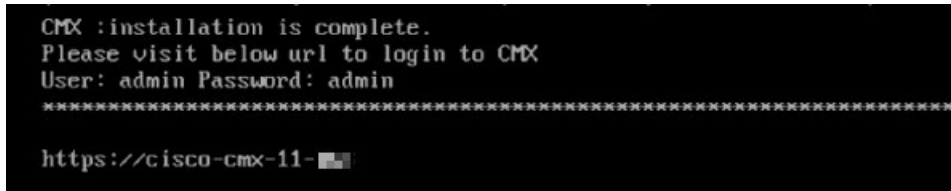
Figure 17: Disk Encryption


```

*****
Disk Encryption...
*****
Do you want to encrypt the /opt partition of the disk ? [y/N]: N
*****
** Running CMX Node Setup - takes 5-20 minutes to complete
*****

```

Step 11 After the Cisco CMX installation is complete, the following success message is displayed.

Figure 18: Success Message

```
CMX :installation is complete.  
Please visit below url to login to CMX  
User: admin Password: admin  
*****  
https://cisco-cmx-11-
```

Step 12 To stop all the Cisco CMX services, run the **cmxctl stop -a** command.

Step 13 To restart the Cisco CMX services, run the **cmxctl start -a** command.

Verifying Installation of Cisco CMX in a VMware Virtual Machine

You can verify the overall system health and status of the Cisco CMX services using the **System** tab in the Cisco CMX GUI. Ensure that all the services, memory, and CPU indicate a healthy status (green) for each Cisco CMX and Cisco CMX node, and that there is at least one active Cisco WLC.

The **System** tab contains the following subtabs:

- **Dashboard:** Provides an overall view of the system.
- **Alerts:** Enables you to view live alerts.
- **Patterns:** Enables you to detect patterns of various criteria, such as Client Count, CPU Usage, Memory Usage, and so on.
- **Metrics:** Enables you to view system metrics.



CHAPTER 2

Virtual Machine Setup and Administration

This chapter contains the following sections:

- [Adding a Hard Disk to a Virtual Machine in the vSphere Client, on page 23](#)
- [Configuring the Network, on page 23](#)
- [Reconfiguring CPU and RAM for Cisco CMX installation, on page 23](#)

Adding a Hard Disk to a Virtual Machine in the vSphere Client

When you add a hard disk to a virtual machine (VM), you can create a new virtual disk, add an existing virtual disk, or add a mapped Storage Area Network (SAN) Logical Unit Number (LUN).

In most cases, you can accept the default device node. For a hard disk, a nondefault device node is useful to control the boot order or to have different Small Computer System Interface (SCSI) controller types. For example, you might want to boot from an LSI Logic controller and use a Buslogic controller with bus sharing turned on to share a data disk with another VM.

Configuring the Network

By default, the VM uses the host network settings. Hence, no configuration is required for VM adapters on ESXi. If you have both public and private networks connected to the host and want the VM to access both the networks, you must configure the VM adapters in the vSphere client.

Reconfiguring CPU and RAM for Cisco CMX installation

Before you run any commands to reconfigure the CPU and RAM, run the **cmxctl config** command to back up the current configuration. Ensure to make the Cisco CMX device offline before the reconfiguration.

Procedure

- Step 1** Run the **cmxctl stop -a** command to stop all the Cisco CMX services.
- Step 2** Run the **cmxos shutdown** command to shutdown the device.
- Step 3** Navigate to VMWare manager.

- Step 4** Change the RAM and CPU as required.
- We recommend that you refer to the documentation for standard configurations. Random configurations may return unexpected results.
- Step 5** Restart up the device.
- Step 6** Run the **cmxctl status** command to verify if all the Cisco CMX services are running.
- Step 7** (Optional) If the Cisco CMX services are not running, run the **cmxctl start** command to start the services.
- Step 8** To reconfigure the RAM reserved for each service, run the **cmxctl config reload --resize=True** command. Running this command will prompt to restart the services. Use the **cmxctl start** command to restart the services.
- Step 9** To verify the configuration, run the **cmxctl config get** command and compare the current and previous configuration.
-



CHAPTER 3

Upload Cisco CMX ISO Image to Cisco CMX 3375 appliance



Note Make sure the Serial over Lan (SoL) functionality is enabled on the Cisco Unified Communication System (UCS). To enable SoL on the Cisco UCS server, use the **set enabled yes** command.

For more information on enabling SoL, refer to the Cisco UCS documentation on Cisco.com.

- [Mount the Cisco ISO image, on page 25](#)
- [Deploy the Cisco CMX 11 ISO image to Cisco CMX 3375, on page 31](#)

Mount the Cisco ISO image

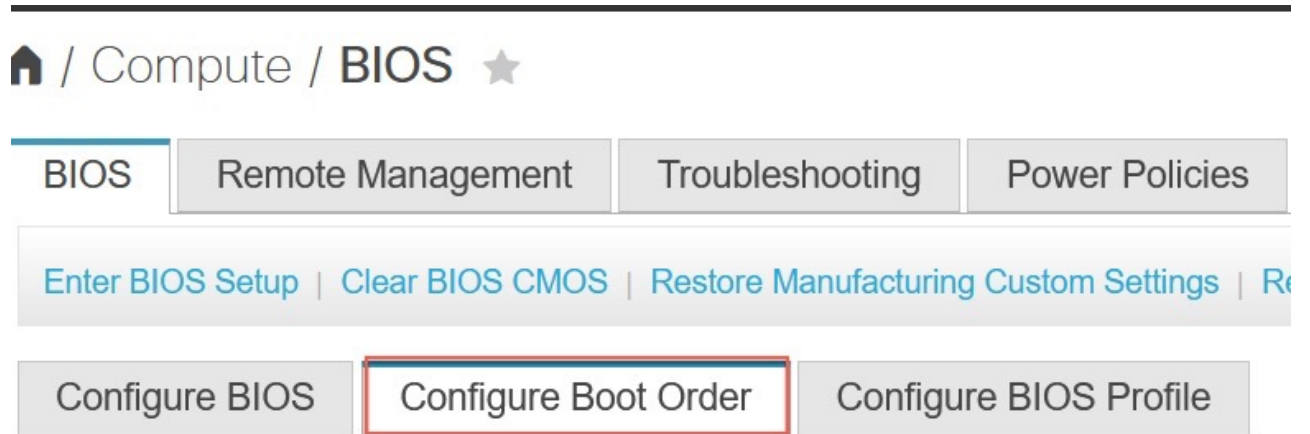
Before you begin

Before you start the installation, we recommend that you manually configure the boot order. The Cisco CMX ISO image deployment is supported only on the Cisco CMX 3375 Appliance.

Procedure

- Step 1** Download the Cisco CMX 11 image from [Download Software](#) page.
- Step 2** Power up the Cisco CMX 3375 appliance and configure the Cisco Integrated Management Controller (CIMC) IP address and user credentials.
- Step 3** Log in to the CIMC IP using Internet Explorer.
- Step 4** In CIMC GUI, from the left pane, click **Menu > Compute > BIOS** tab.

Figure 19: BIOS Option



BIOS Properties

Step 5

In the **Configured Boot Mode** tab, perform the following:

- Select the **UEFI Secure Boot** check box.
- From the **Configured Boot Mode** drop-down list, choose **UEFI** as configured mode.

Figure 20: Configure Boot Order Tab

Home / Compute / BIOS Ref

BIOS Remote Management Troubleshooting Power Policies PID Catalog

Enter BIOS Setup | Clear BIOS CMOS | Restore Manufacturing Custom Settings | Restore Defaults

Configure BIOS **Configure Boot Order** Configure BIOS Profile

BIOS Properties

Running Version C220M5.3.1.3c.0.0307181404

UEFI Secure Boot ☒

Actual Boot Mode Legacy

Configured Boot Mode UEFI (UEFI Secure Boot is enabled, disable it to modify Configured Boot Mode.)

Last Configured Boot Order Source BIOS

Configured One time boot device

Save Changes

▼ Configured Boot Devices

Basic

▼ ☒ Advanced

cmx-10

Actual Boot Devices

UEFI: Built-in EFI Shell (NonPolicyTarget)

(Bus 67 Dev 00)PCI RAID Adapter (NonPolicyTarget)

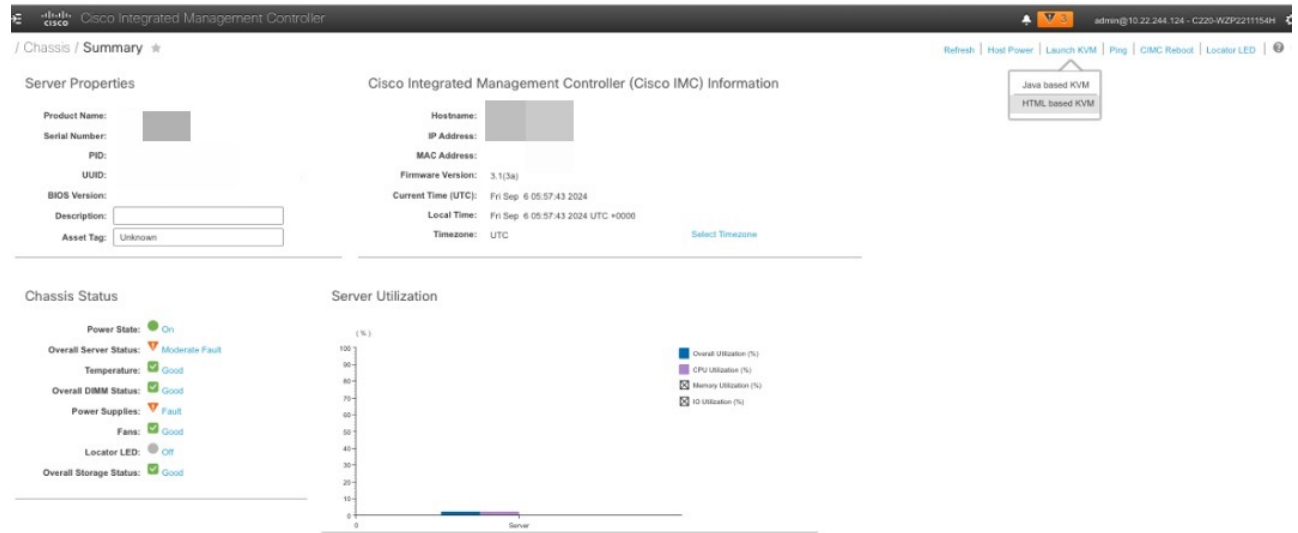
IBA XE (X550) Slot 6500 v2413 (NonPolicyTarget)

IBA XE (X550) Slot 6501 v2413 (NonPolicyTarget)

- Step 6** Follow the on-screen instructions to reboot the system.
- Step 7** Click **Configure Boot Order**. The option is displayed at the right end of the window.
- Step 8** In the **Configure Boot Order** window, click the **Advanced** tab.
- Step 9** Click **Add Virtual Media** and enter a name for the new virtual media.
- Step 10** From the **Sub Type** drop-down list, choose **KVM MAPPED DVD**.
- Step 11** Click **Save Changes**.
The new virtual media is created and enabled.
- Step 12** Use IE and open KVM. We recommend that you use HTML Based KVM on IE or Firefox for more consistent results.

Mount the Cisco ISO image

Figure 21: Cisco Integrated Management Controller

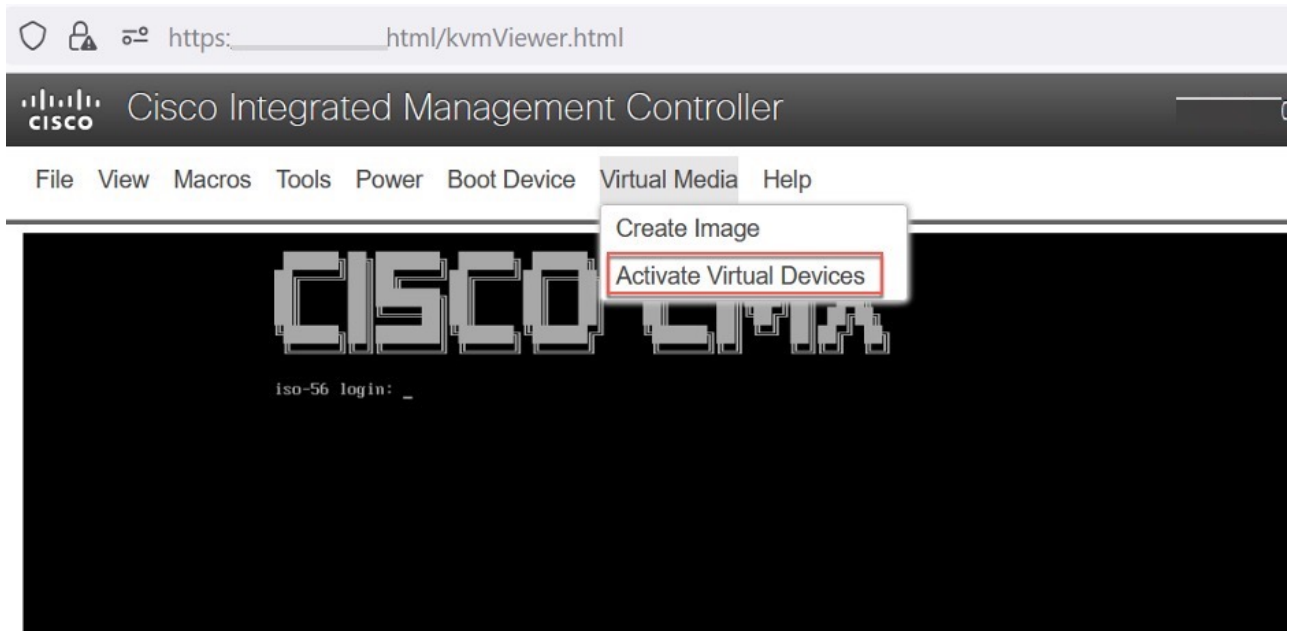


Step 13 Click the link displayed to accept the certificate and load the KVM client application.

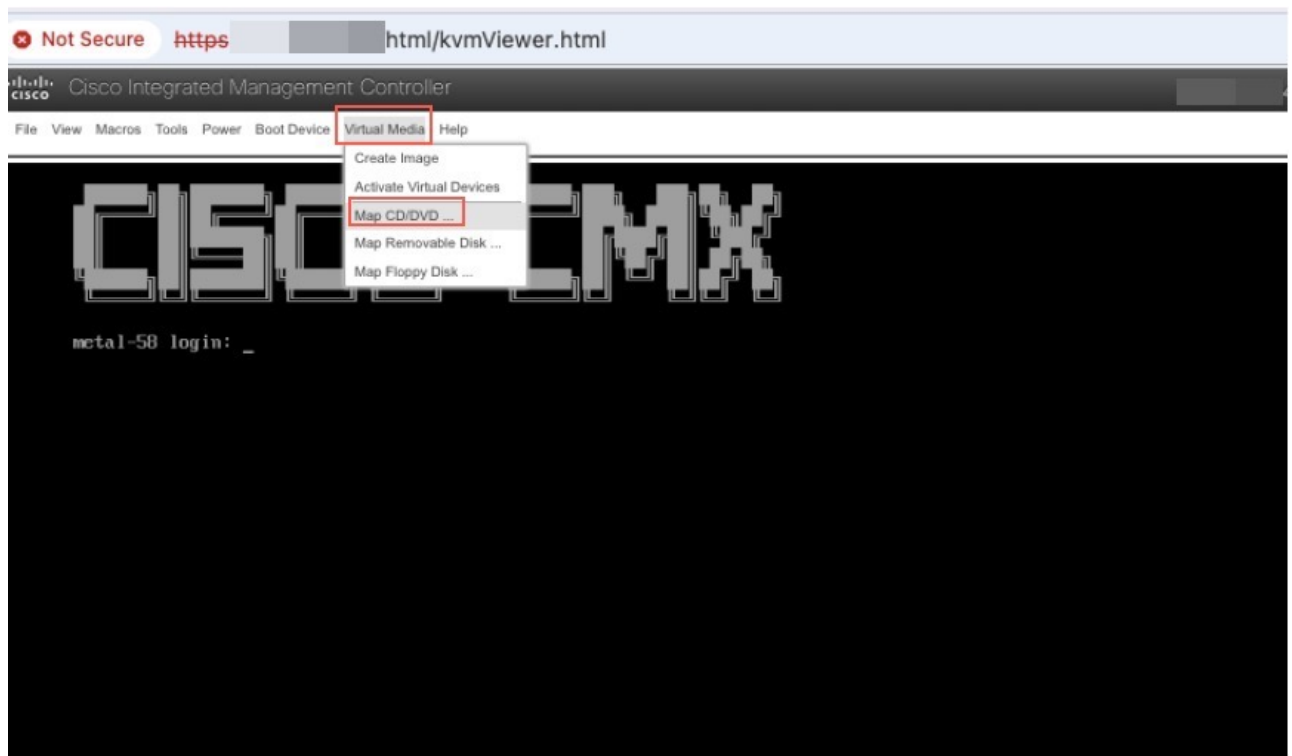
Figure 22: Cisco Integrated Management Controller



Step 14 Click **Virtual Media** > **Activate Virtual Devices**.

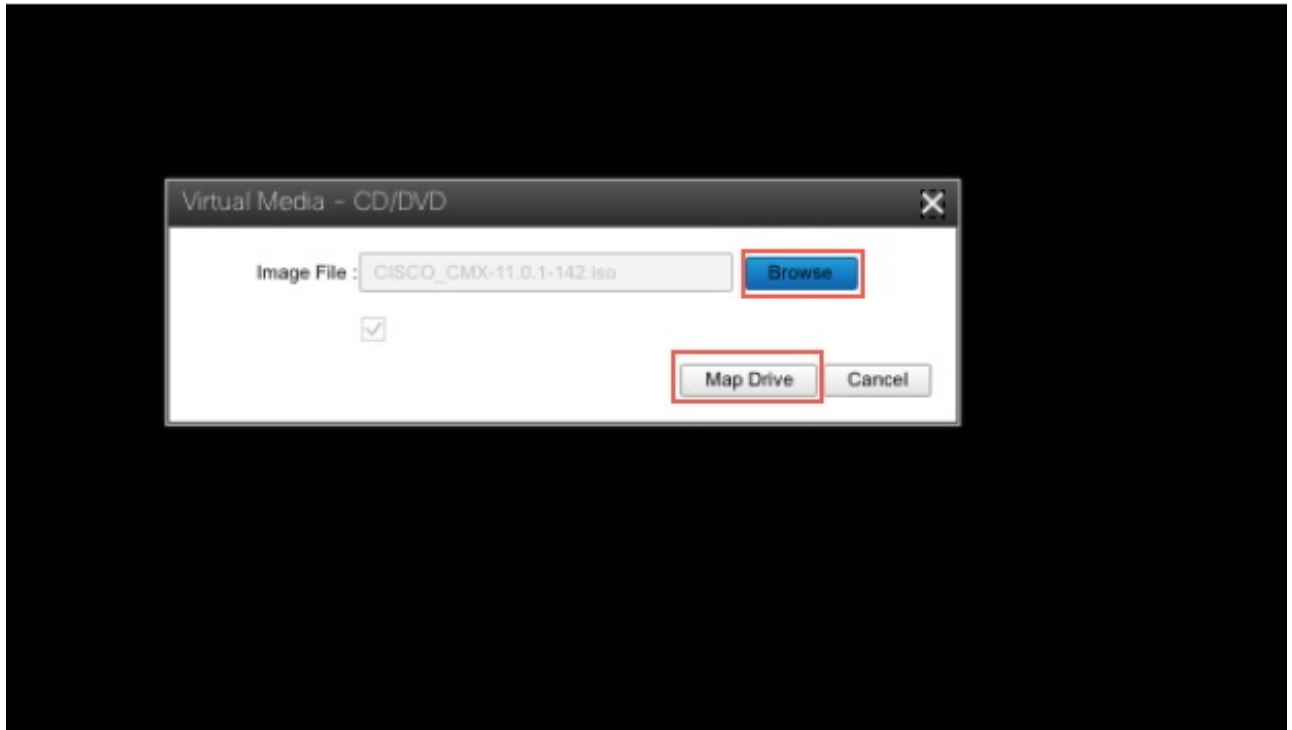
Figure 23: Activate Virtual Devices**Step 15**

To map the locally downloaded Cisco CMX ISO, click **Virtual Media > Map CD/DVD**.

Figure 24: Map CD/DVD Option**Step 16**

Use the **Browse** option to select the ISO file.

Step 17 To map the selected ISO file, click **Map Drive**.



Step 18 In the **KVM** window, navigate to **Boot Device** option.

Step 19 Select the new virtual media (created in step 9) and click **ok** to proceed.



What to do next

To deploy the Cisco CMC ISO image, see [Deploy the Cisco CMX 11 ISO image to Cisco CMX 3375, on page 31](#).

Deploy the Cisco CMX 11 ISO image to Cisco CMX 3375

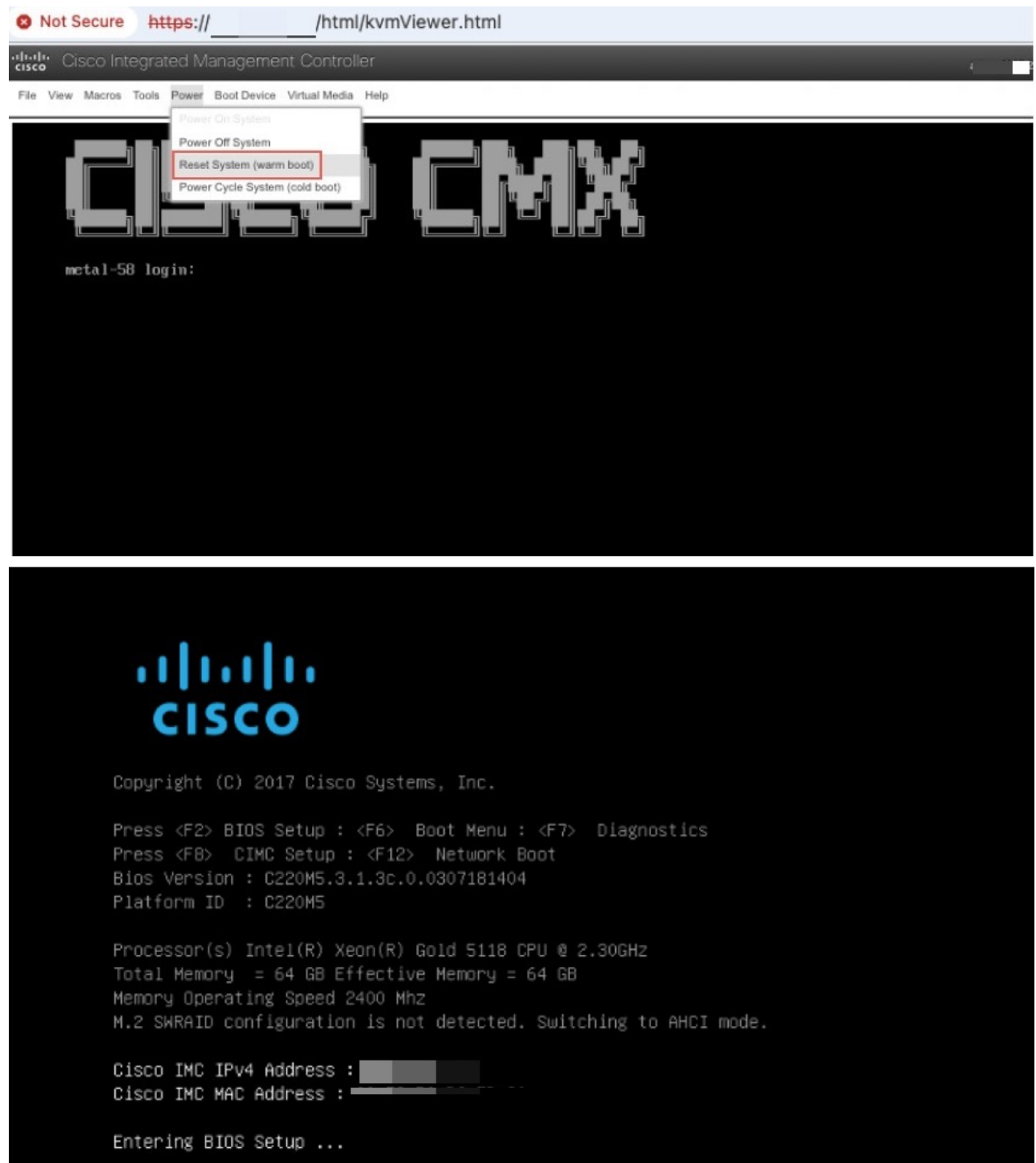
Deploying the Cisco CMX 11.0.1 ISO version differs from deploying the Cisco CMX 10.6.3.

Procedure

Step 1

After mounting the Cisco CMX ISO image, in the Kernel-based Virtual Machine (KVM) virtualization module, select **Reset System (warm boot)**.

Figure 25: Warm Boot

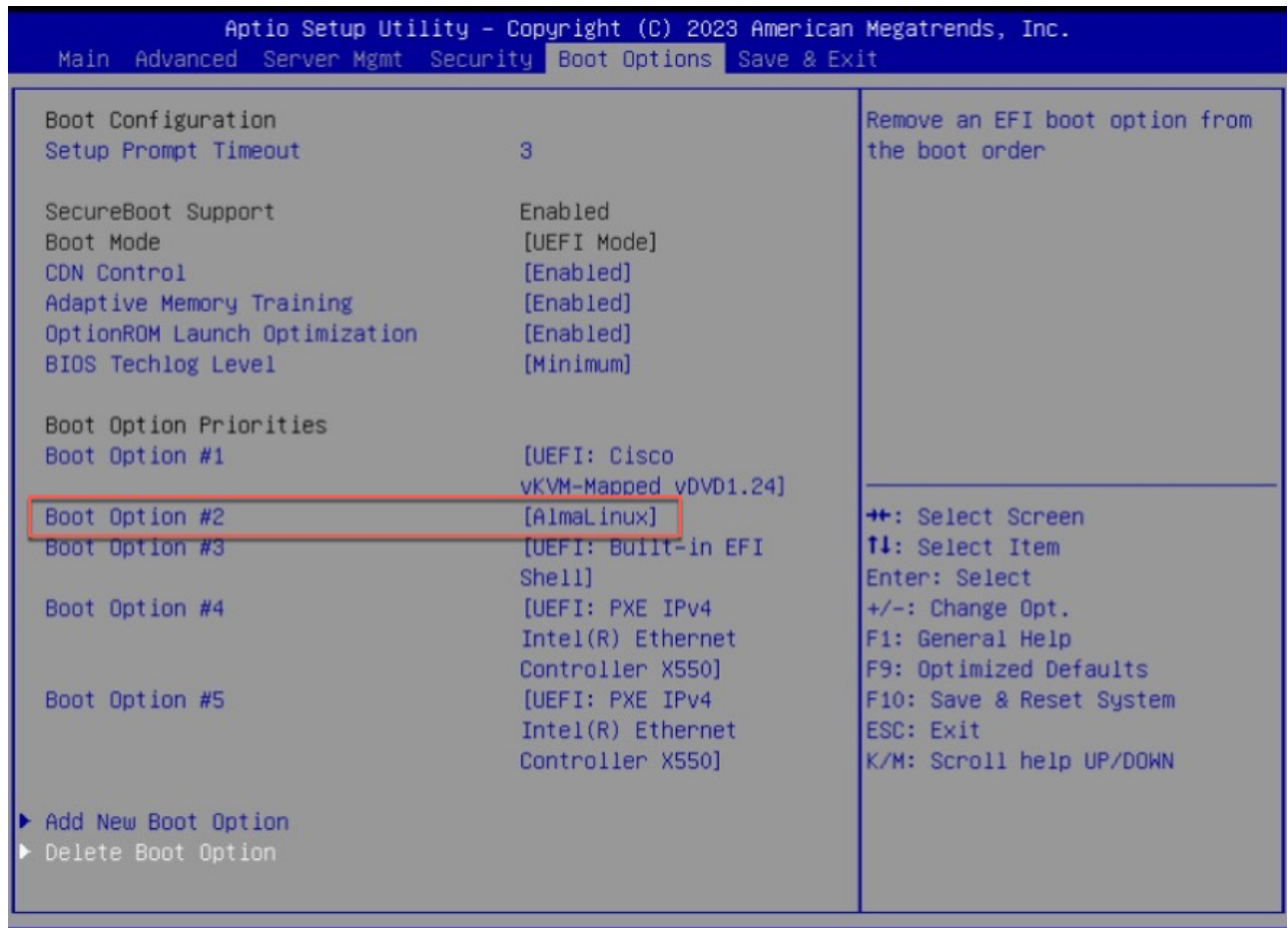


Step 2 To enter into BIOS setup, press **F2**.

If Cisco CMX 11 ISO is installed before, it is possible that the **AlmaLinux** boot option is displayed.

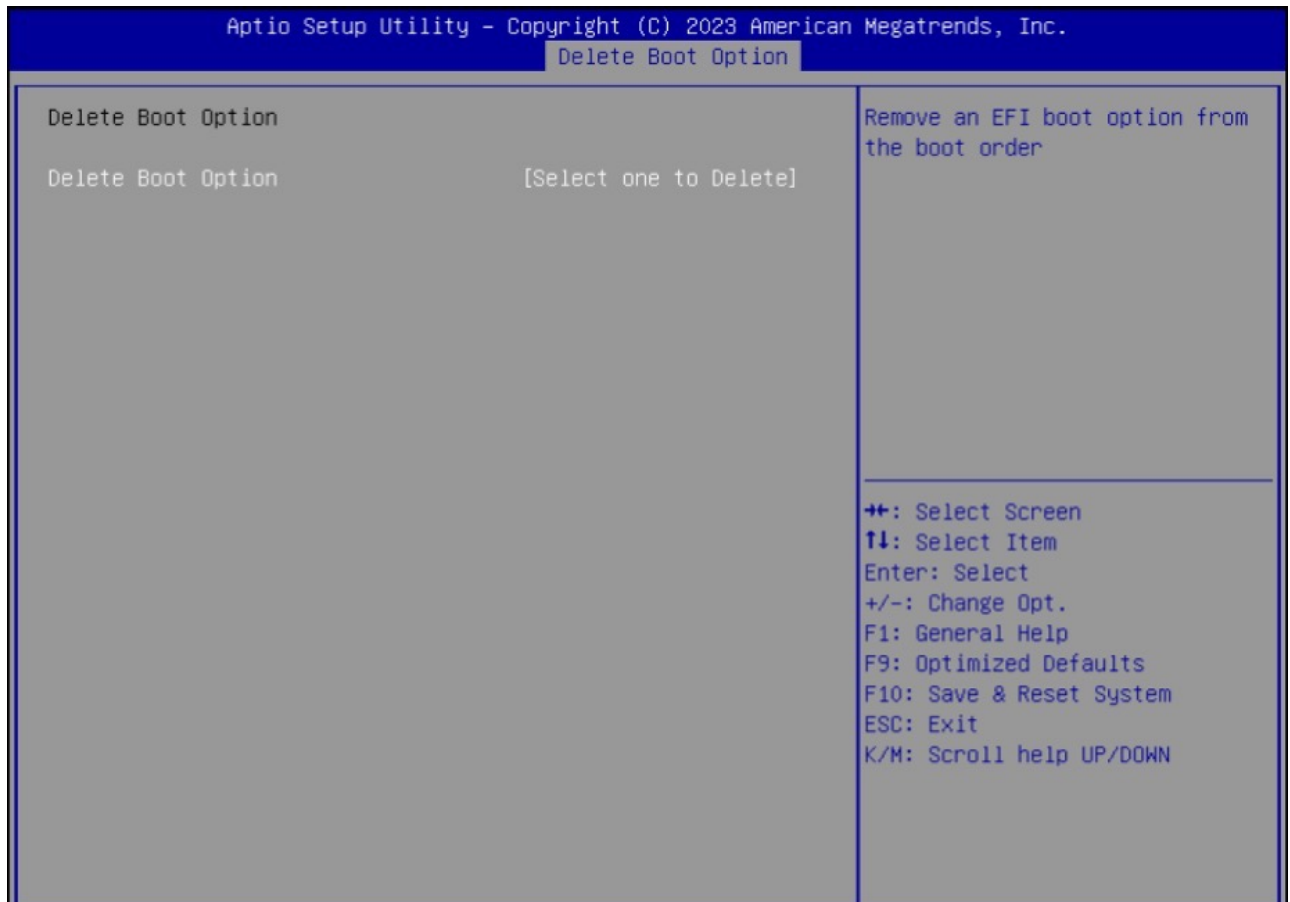
If the **AlmaLinux** boot option is not displayed, skip the next steps and see step 5.

Figure 26: AlmaLinux Boot Option



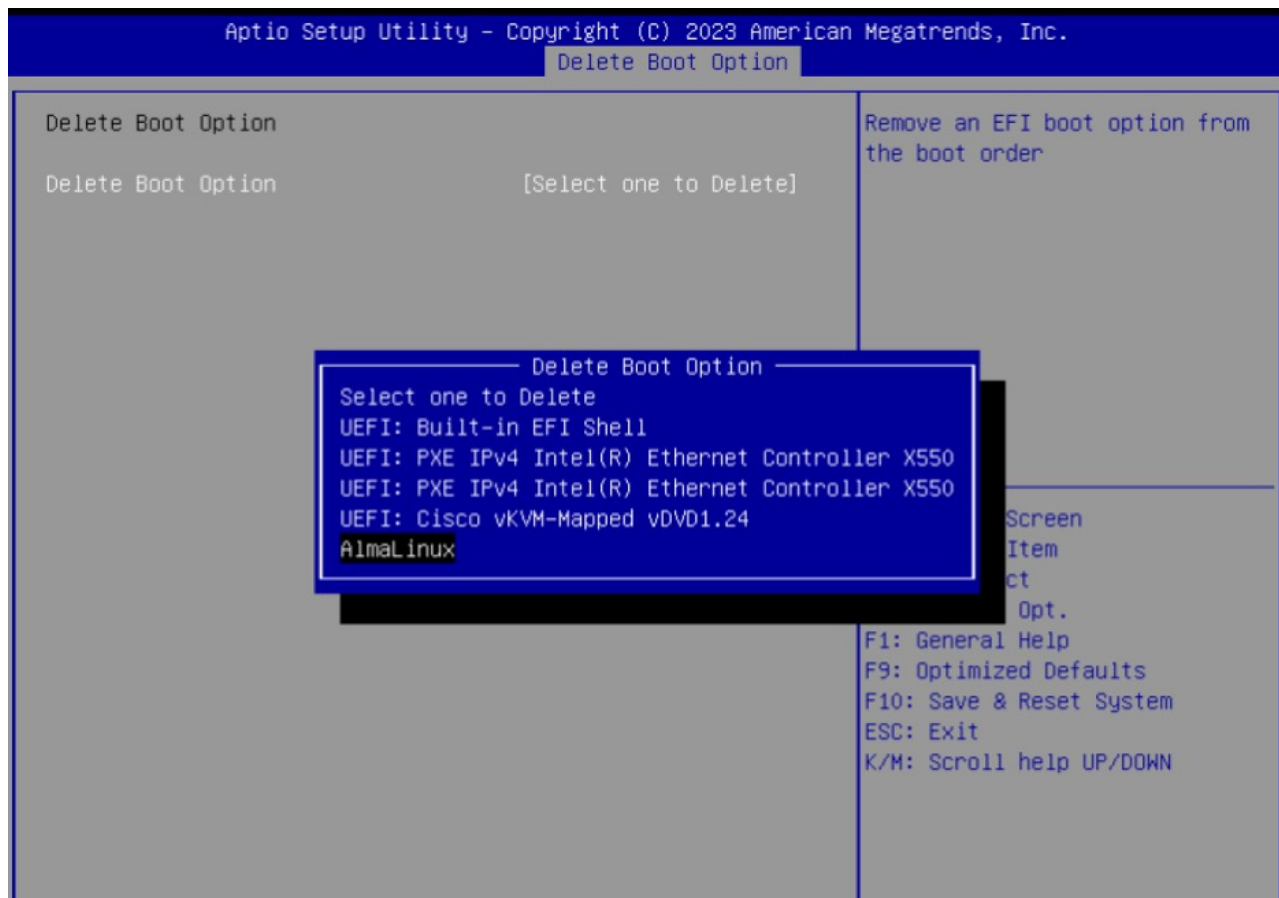
Step 3 Select **Delete Boot Option** (at the end of the window) and press **Enter**.

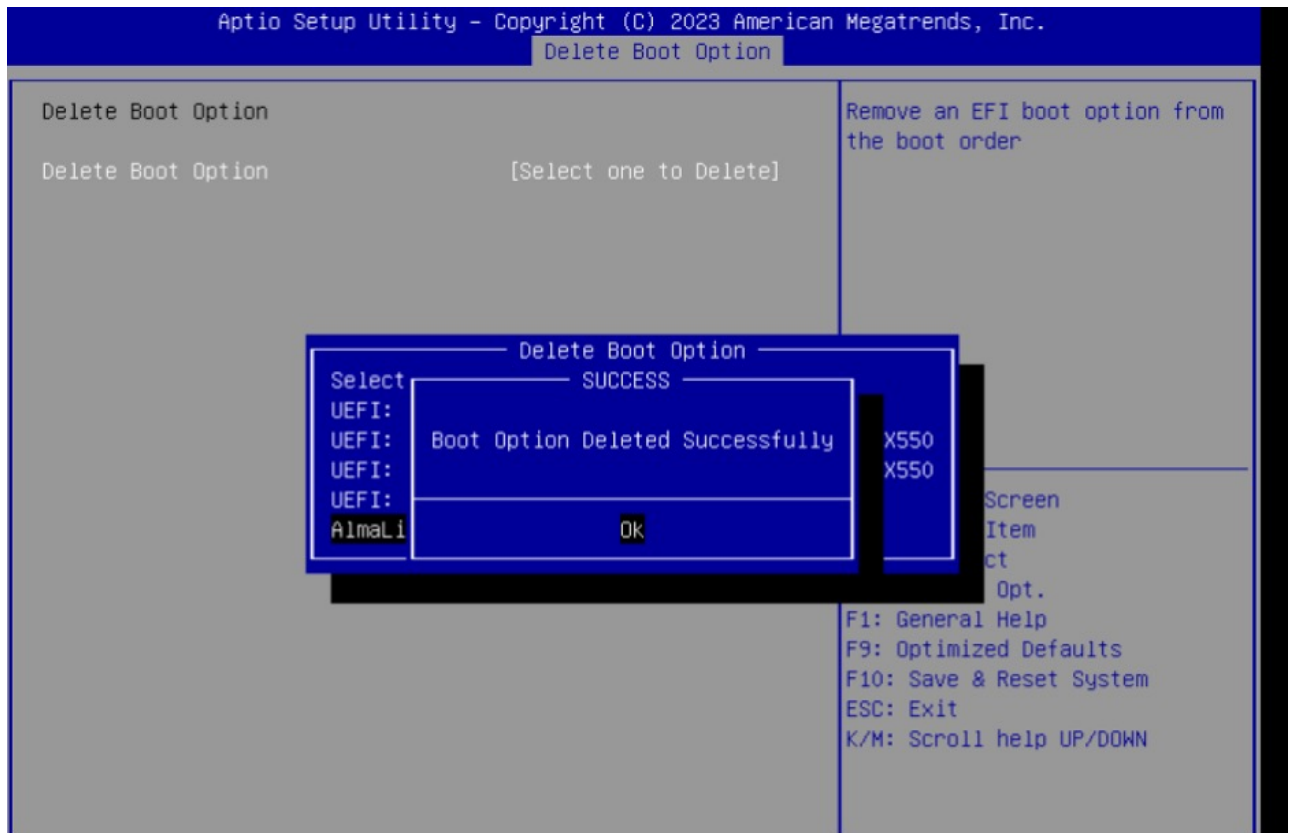
Figure 27: Delete Boot Option



Step 4 Select **AlmaLinux** option and remove the same.

Figure 28: Delete Boot Option Sequence



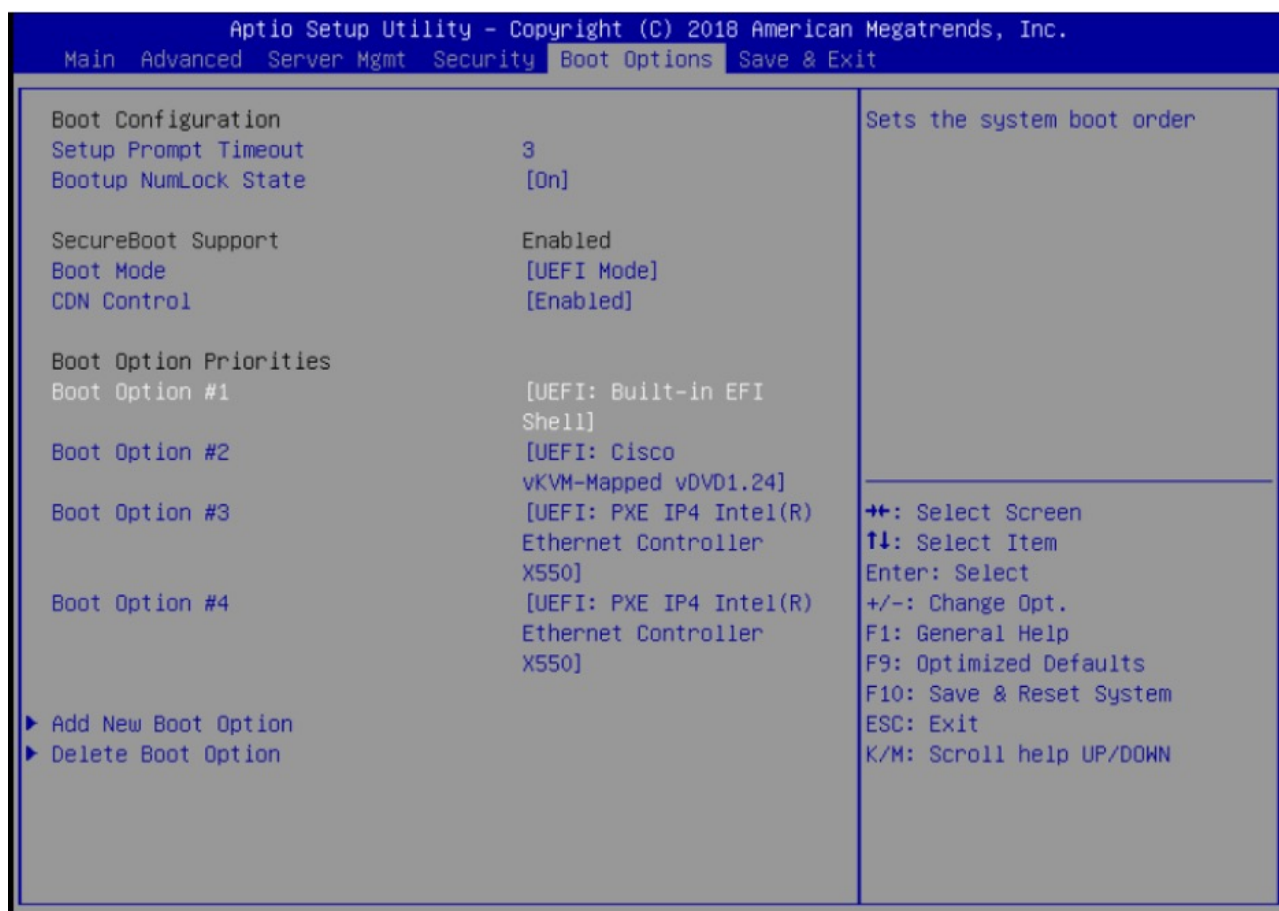


Step 5 To exit from the current window, press **esc**.

Step 6 Navigate to the **Boot Options** tab.

Step 7 In the **Boot Option Priorities** section, to change the order of the boot options, select the particular entry and press the **Shift and (+/-)** keys at the same time to rearrange the entry up or down.

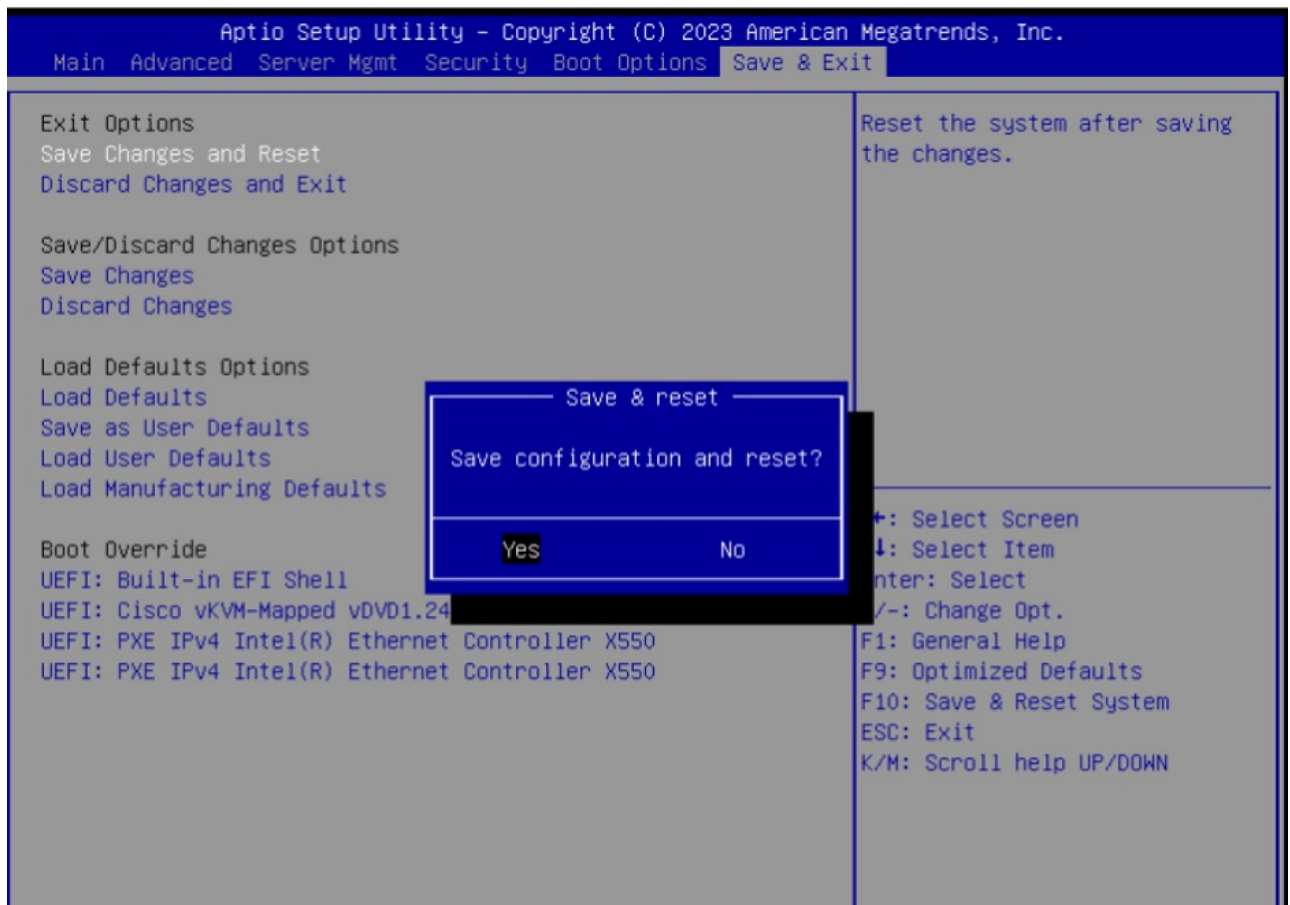
Verify that [UEFI: Cisco vKVM-Mapped vDVD1.24] gets the second preference in the order. [UEFI: Cisco vKVM-Mapped vDVD1.24] must display as boot option 2.



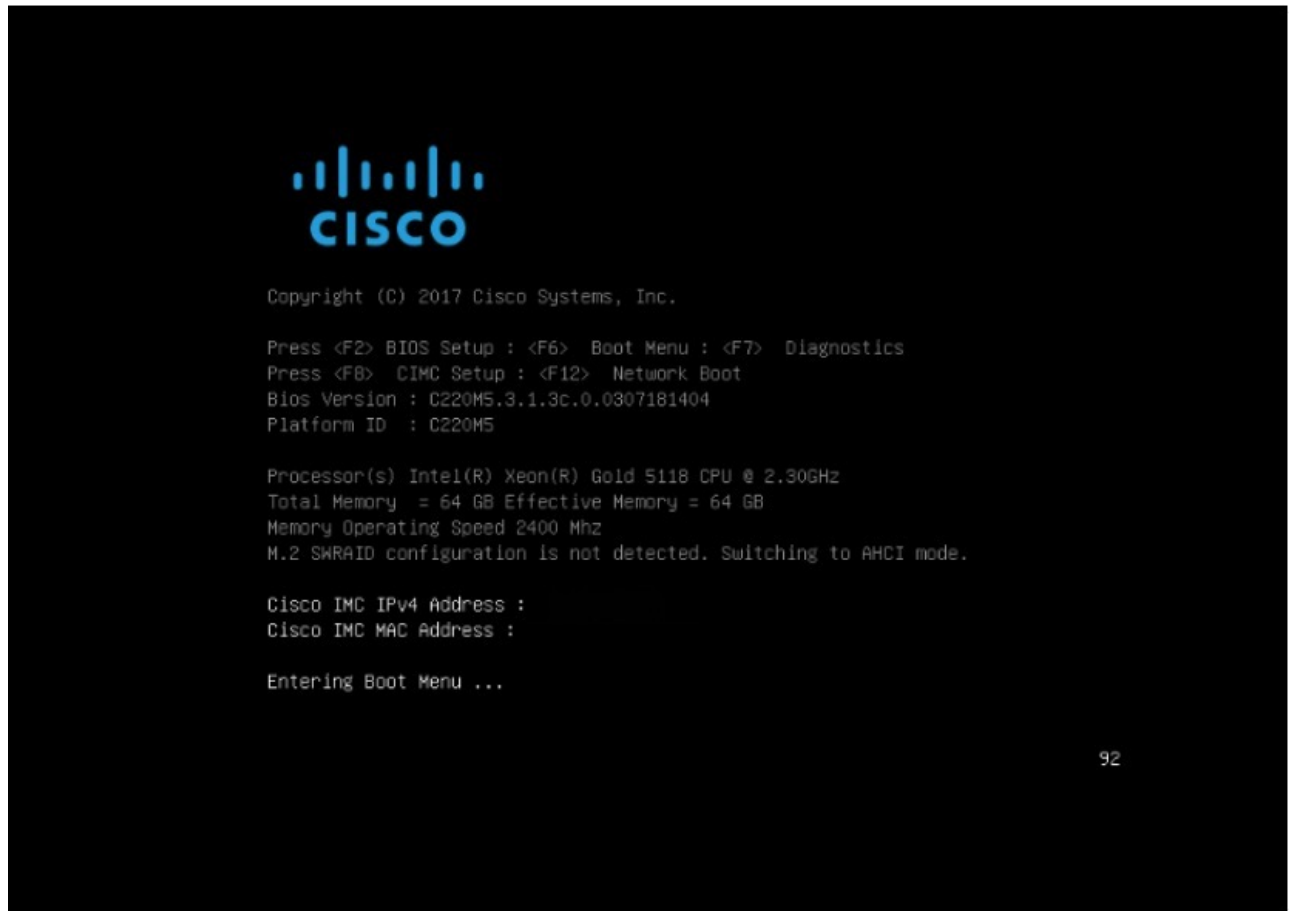
Step 8 Navigate to the **Save & Exit** tab.

Step 9 Select **Save Changes & Reset** and press **Enter**.

Step 10 In the **Save & reset** pop-up window, select **Yes** to save configuration and reset and then press **Enter**.

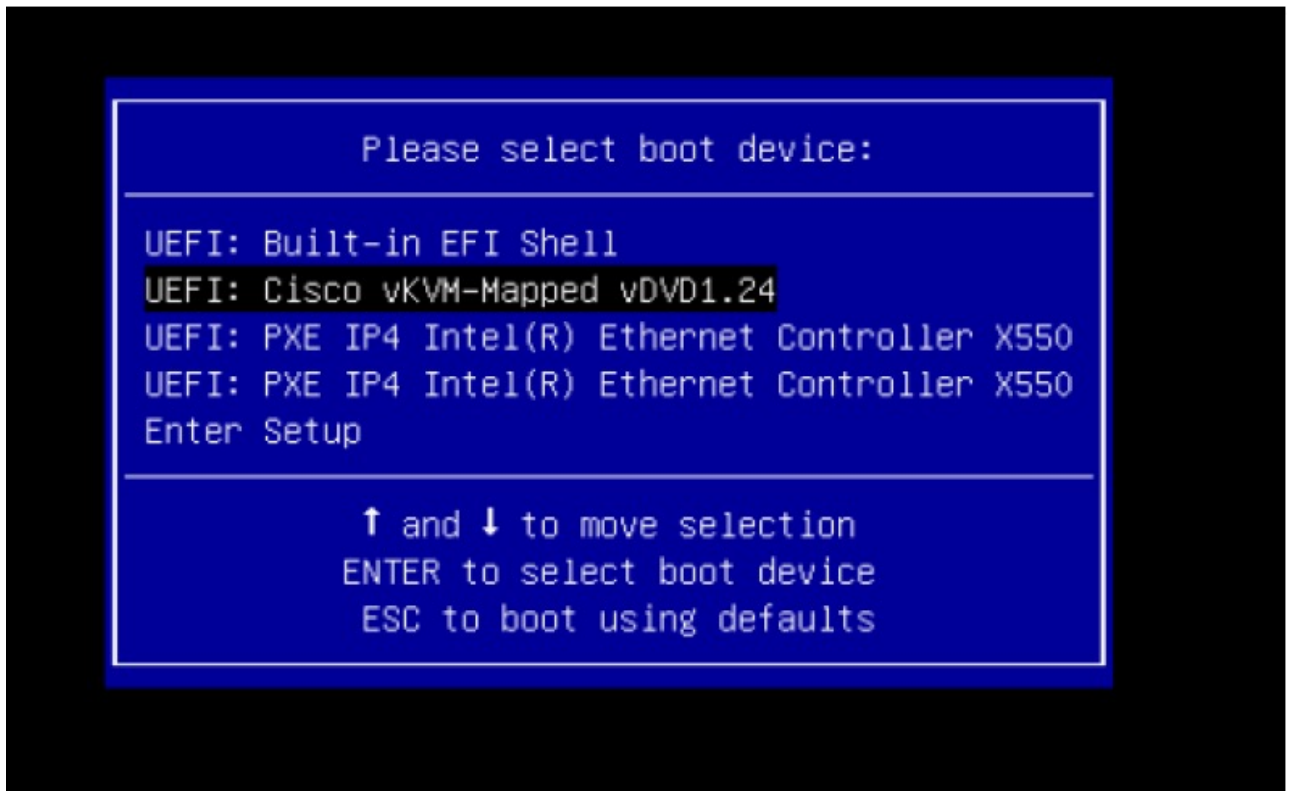


The boot process is initiated.

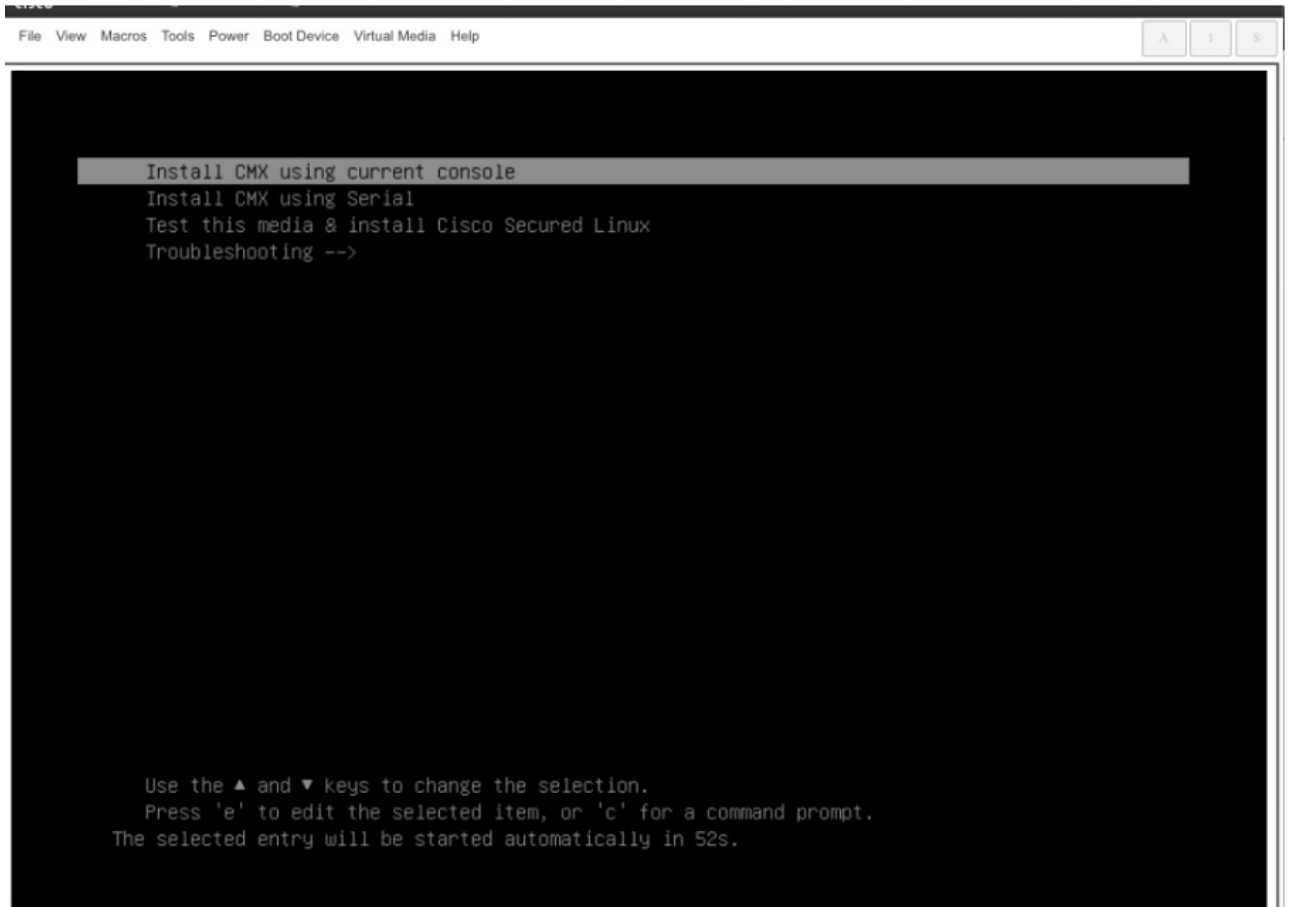
Figure 29: Boot Process

Step 11 To enter into boot menu, press **F6**.

Step 12 To start the ISO installation, select the second option **UEFI: Cisco vKVM-Mapped vDVD1.24**.

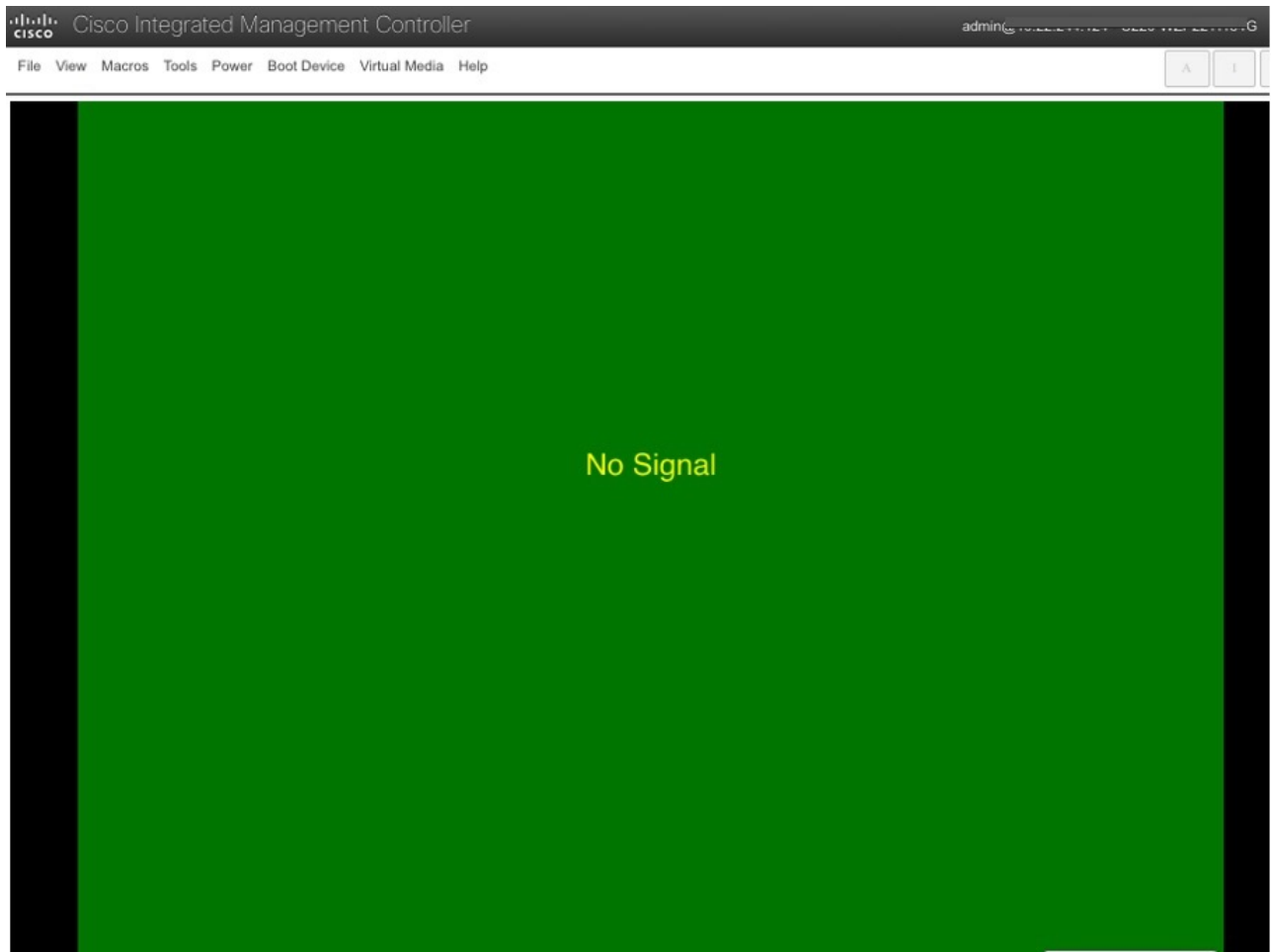


- Step 13** Select installation option either using the current console or serial. By default, current console is selected. We recommend that you verify if ISO is mounted and then proceed.

Figure 30: Installation Options**Note**

The installation process is about two to three hours. You must not reboot during this time. If a green screen is displayed with a message indicating that there is no signal, press **Enter** and wait.

Figure 31: No Signal Window

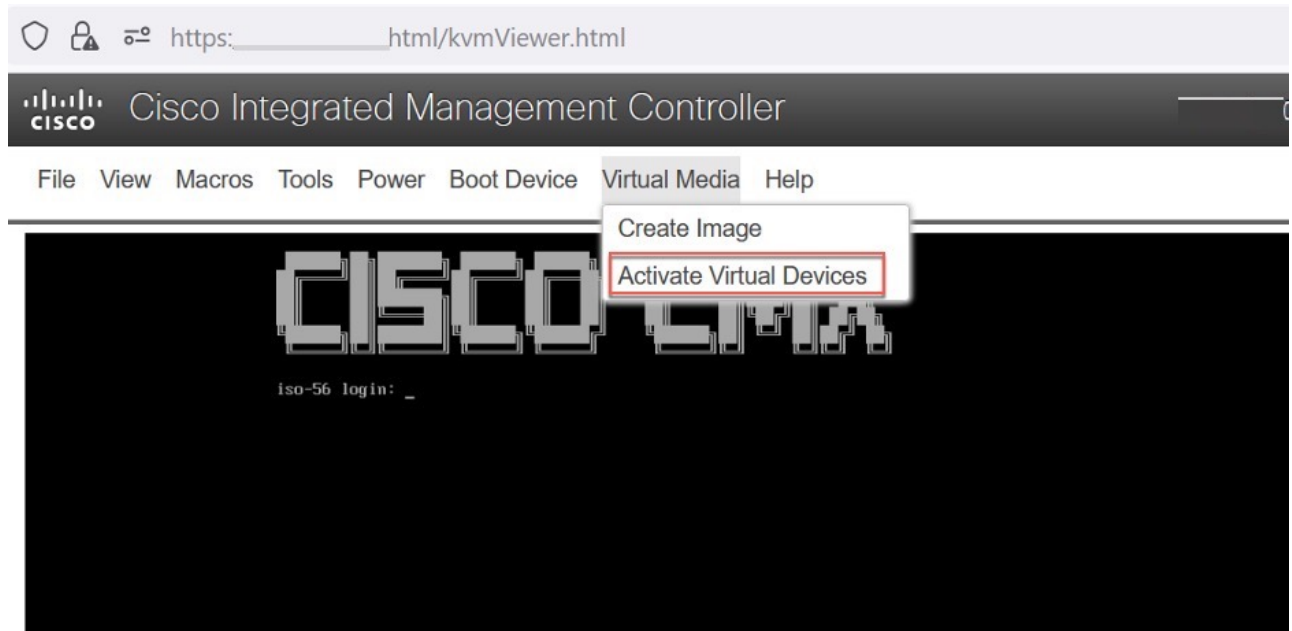


Note

Once you complete the Operating System (OS) installation, the system loads Alma Linux 8, and the Cisco CMX welcome window is displayed.

Step 14

In the KVM window, under the **Virtual Media** tab, if the ISO status is displayed as mounted, choose **Virtual Media > Activate Virtual Devices**.

Figure 32: Activate Virtual Devices

Step 15 Proceed with the Cisco CMX ISO deployment process.

What to do next

During the deployment process, you may encounter a prompt to enter the network settings, as shown below. If the network is not configured correctly, an error message is displayed. This is a known issue that may occur intermittently.

To resolve this issue, perform a warm boot of the Cisco CMX box using CIMC from the **Power** menu.

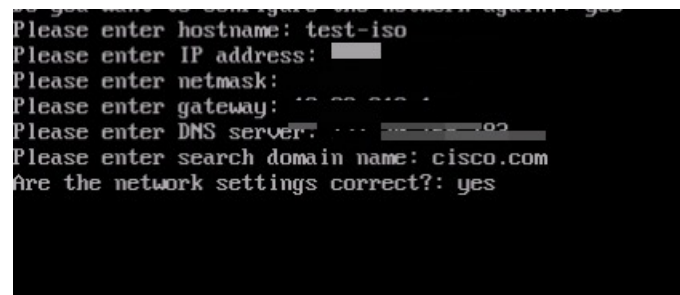
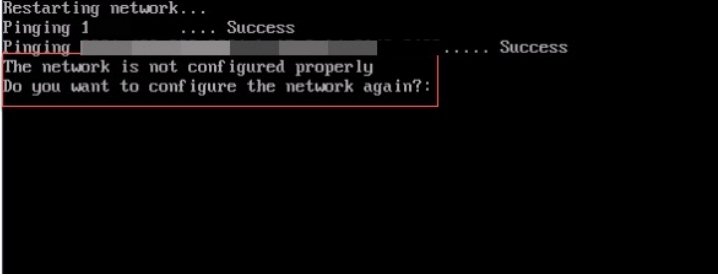
Figure 33: Network Settings

Figure 34: Network Configuration ErrorA terminal window with a black background and white text. The text shows a sequence of network-related commands and their outputs. The last two lines are highlighted with a red rectangular box. The text is as follows:

```
Restarting network...
Pinging 1 .... Success
Pinging ..... Success
The network is not configured properly
Do you want to configure the network again?:
```



Note For more information about Cisco CMX Release 11.0.1, see [Release Notes for Cisco Connected Mobile Experiences \(CMX\) Release 11.0.1](#).



CHAPTER 4

Upload Cisco CMX ISO Image to an M6 appliance



Note Make sure the Serial over Lan (SoL) functionality is enabled on the Cisco Unified Communication System (UCS). To enable SoL on the Cisco UCS server, use the **set enabled yes** command.

For more information on enabling SoL, refer to the Cisco UCS documentation on Cisco.com.

- [Mount the Cisco ISO image on an M6 appliance, on page 45](#)
- [Deploy a Cisco CMX 11 ISO image on an M6 appliance, on page 50](#)

Mount the Cisco ISO image on an M6 appliance

Mount the Cisco ISO image on a supported M6 appliance to prepare the system for Cisco CMX installation, ensuring the device is correctly configured and ready for the deployment process.

You perform this task when installing Cisco CMX software on an M6 appliance. Mounting the ISO image enables the appliance to boot from the installation media and proceed with the Cisco CMX setup. This step ensures the correct operating environment is ready before starting the deployment process.

Before you begin

Before you start the installation, we recommend that you manually configure the boot order. The Cisco CMX ISO image deployment is supported only on M6 devices.

Follow these steps to mount the Cisco ISO image.

Procedure

- Step 1** Download the Cisco CMX 11 image from [Download Software](#) page.
- Step 2** Power up the Cisco CMX M6 appliance and configure the CIMC IP Address and user credentials.
- Step 3** Log in to CIMC IP using Internet Explorer and from the left pane, click **Menu > Compute > BIOS** tab.
- Step 4** From the **Configured Boot Mode** drop-down list, choose:
 - a. Check the **UEFI Secure Boot** check box.
 - b. From the **UEFI** drop-down list, choose **UEFI** as configured mode.

Step 5 Follow the on screen instructions to reboot the system.

Figure 35: Configure Boot Order Options for Cisco CMX 11

Home / Compute / BIOS Refresh | Host Po

BIOS | Remote Management | Power Policies | PID Catalog | Persistent Memory

Enter BIOS Setup | Clear BIOS CMOS | Restore Manufacturing Custom Settings | Restore Defaults

Configure BIOS | **Configure Boot Order** | Configure BIOS Profile | Secure Boot Certificate Management

BIOS Properties

Running Version: C220M6.4.3.2d.0.0825231000

UEFI Secure Boot: ☒

Actual Boot Mode: Uefi

Configured Boot Mode: UEFI (UEFI Secure Boot is enabled, disable it to modify Configured Boot Mode.)

Last Configured Boot Order Source: BIOS

Configured One time boot device:

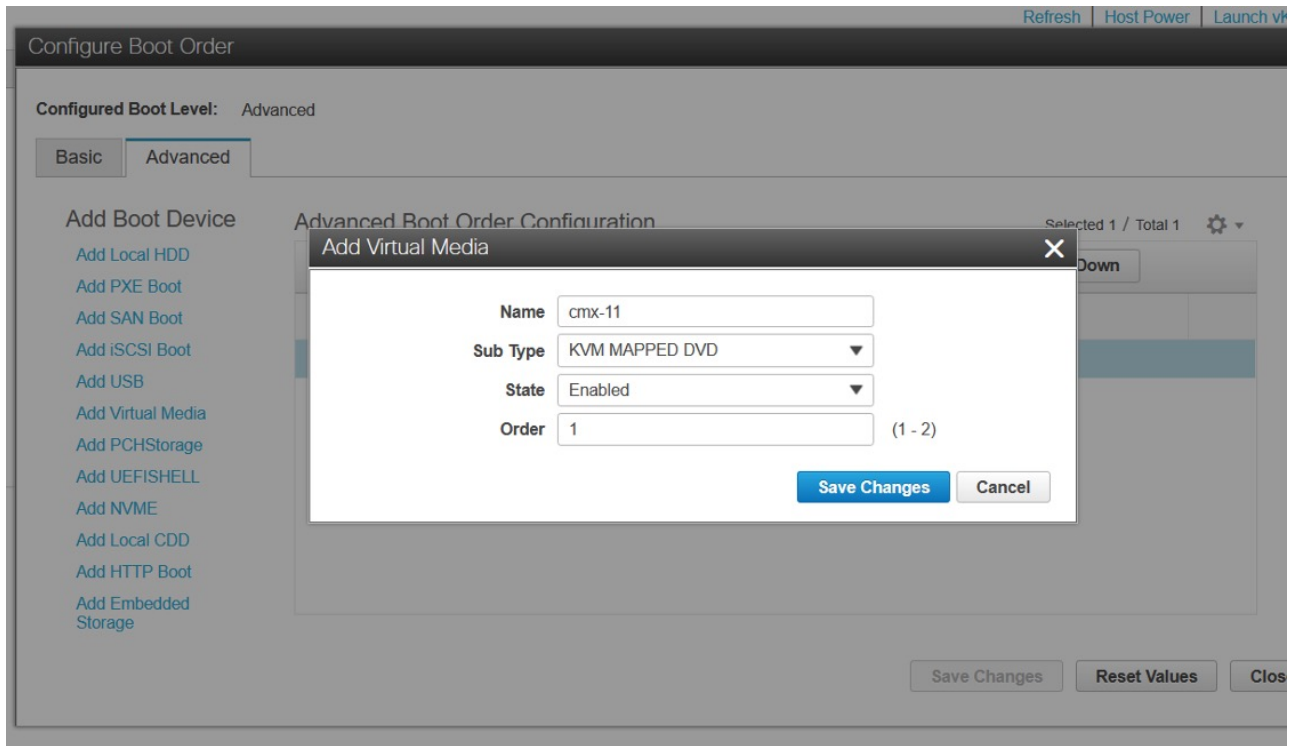
Save Changes

Configured Boot Devices	Actual Boot Devices
Basic	AlmaLinux (NonPolicyTarget)
<input checked="" type="checkbox"/> Advanced	UEFI: Built-in EFI Shell (NonPolicyTarget)
ISO	UEFI: HTTP IPv4 Cisco X550-TX 10 Gig LOM (NonPolicyTarget)
	UEFI: PXE IPv4 Cisco X550-TX 10 Gig LOM (NonPolicyTarget)
	UEFI: HTTP IPv6 Cisco X550-TX 10 Gig LOM (NonPolicyTarget)

The host reboot process is initiated.

Step 6 Click **Configure Boot Order**. The option is displayed at the right end of the window.

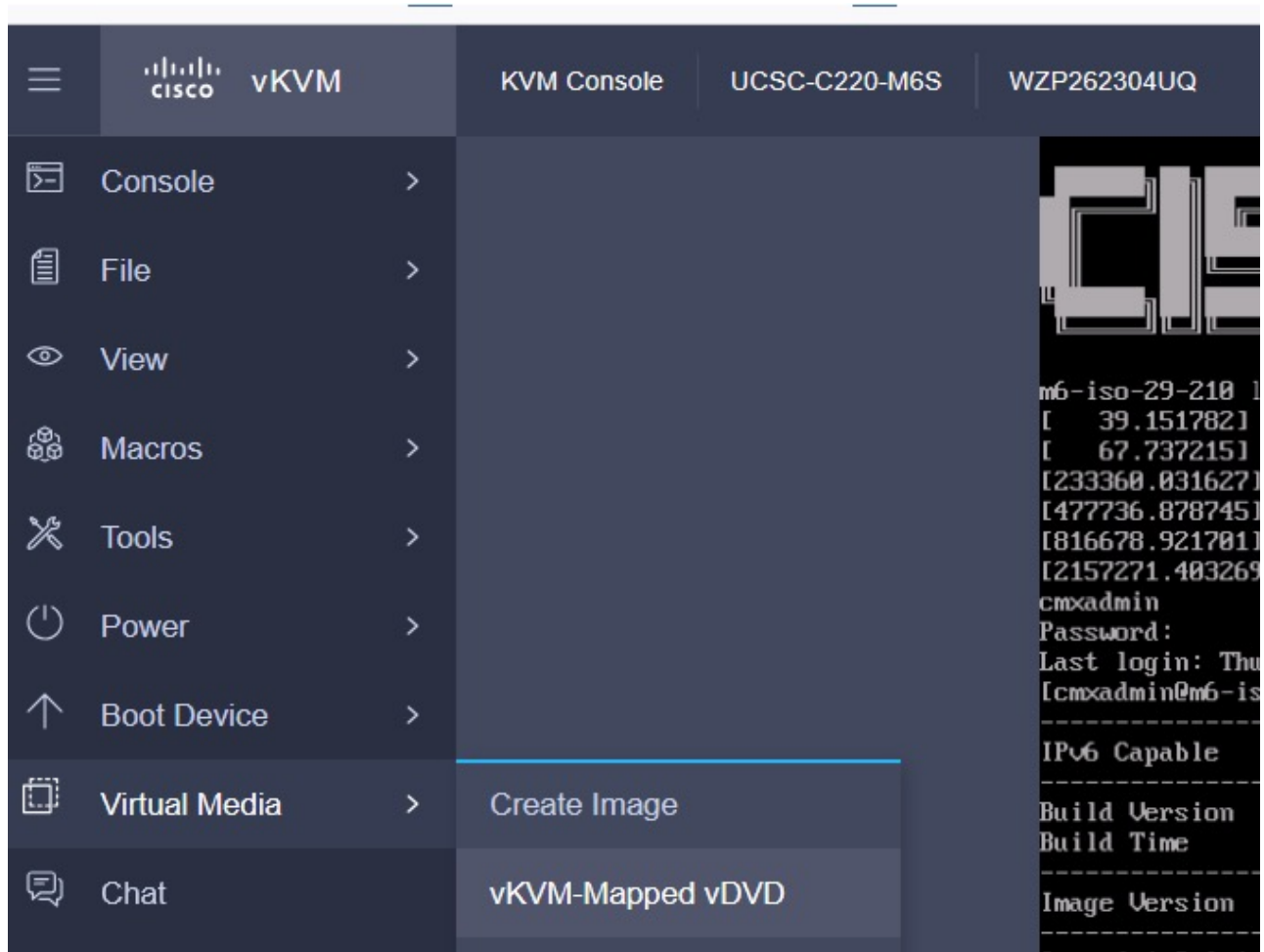
- In the **Configure Boot Order** window, click the **Advanced** tab.
- Click **Add Virtual Media** and enter a name for the new virtual media.
- From the **Sub Type** drop-down list, choose **KVM MAPPED DVD**.
- Click **Save Changes**.

Figure 36: Cisco Integrated Management Controller

The new virtual media is created and enabled.

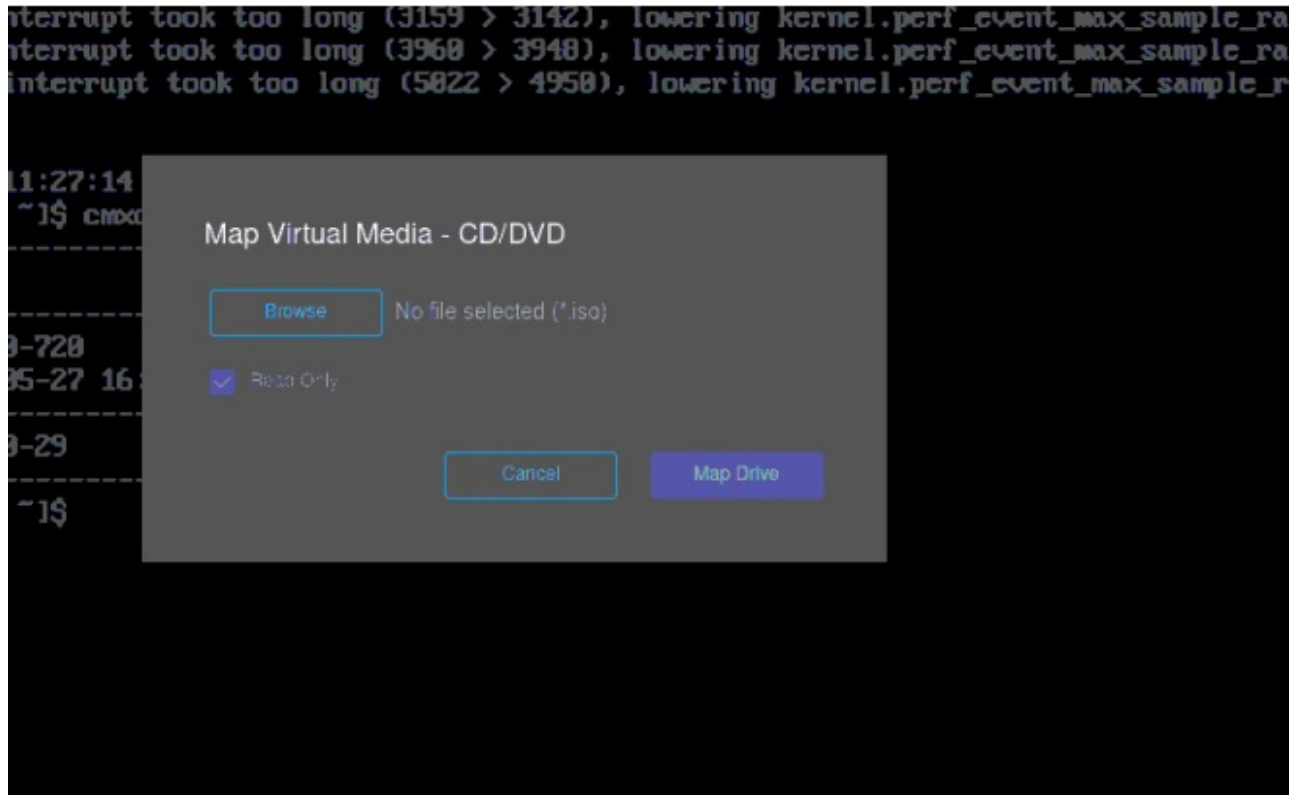
Step 7 To map the locally downloaded CMX ISO, click **Virtual Media** > **vKVM-Mapped vDVD**.

Figure 37: vKVM-Mapped vDVD



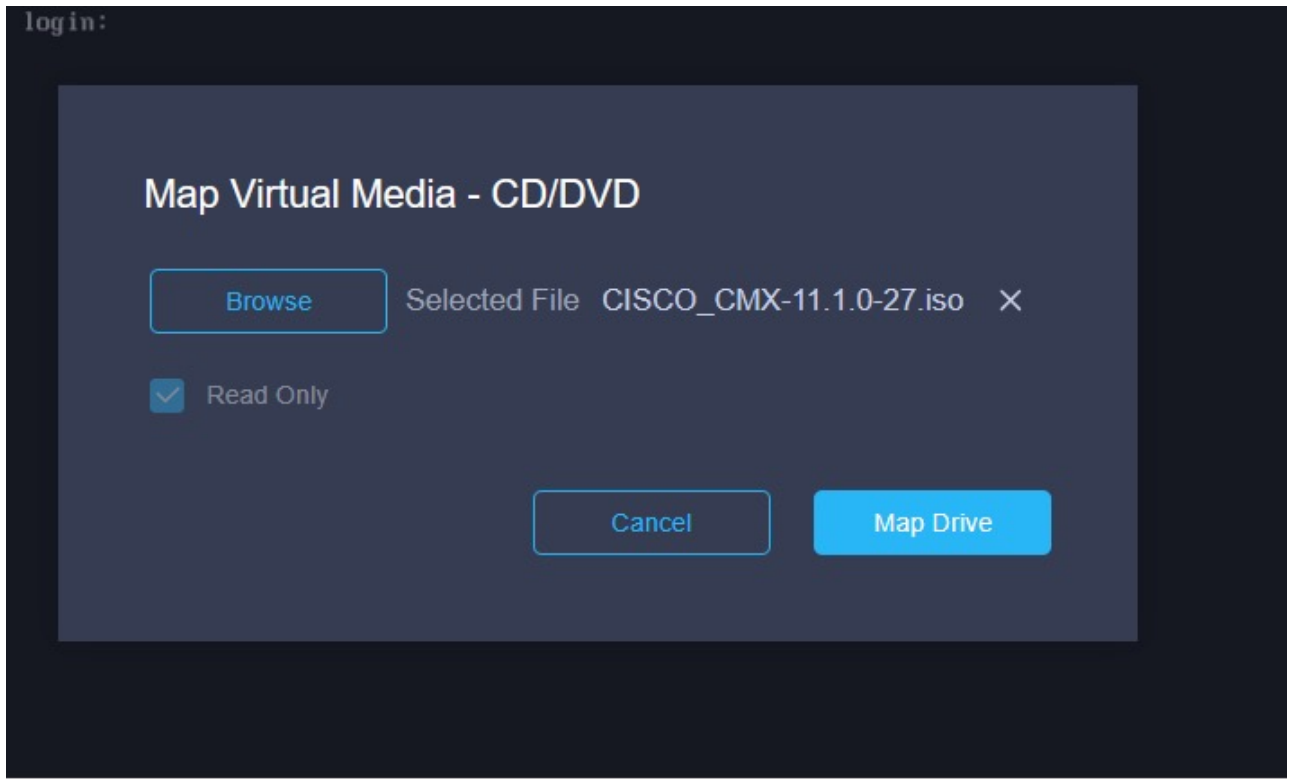
Step 8 Use the **Browse** option to select the ISO file.

Figure 38: Browse ISO file



Step 9 To map the selected ISO file, click **Map Drive**.

Figure 39: Map Drive

**What to do next**

To deploy the Cisco CMC ISO image, see [Deploy a Cisco CMX 11 ISO image on an M6 appliance, on page 50](#).

Deploy a Cisco CMX 11 ISO image on an M6 appliance

Install Cisco CMX 11 on an M6 device using the ISO image.

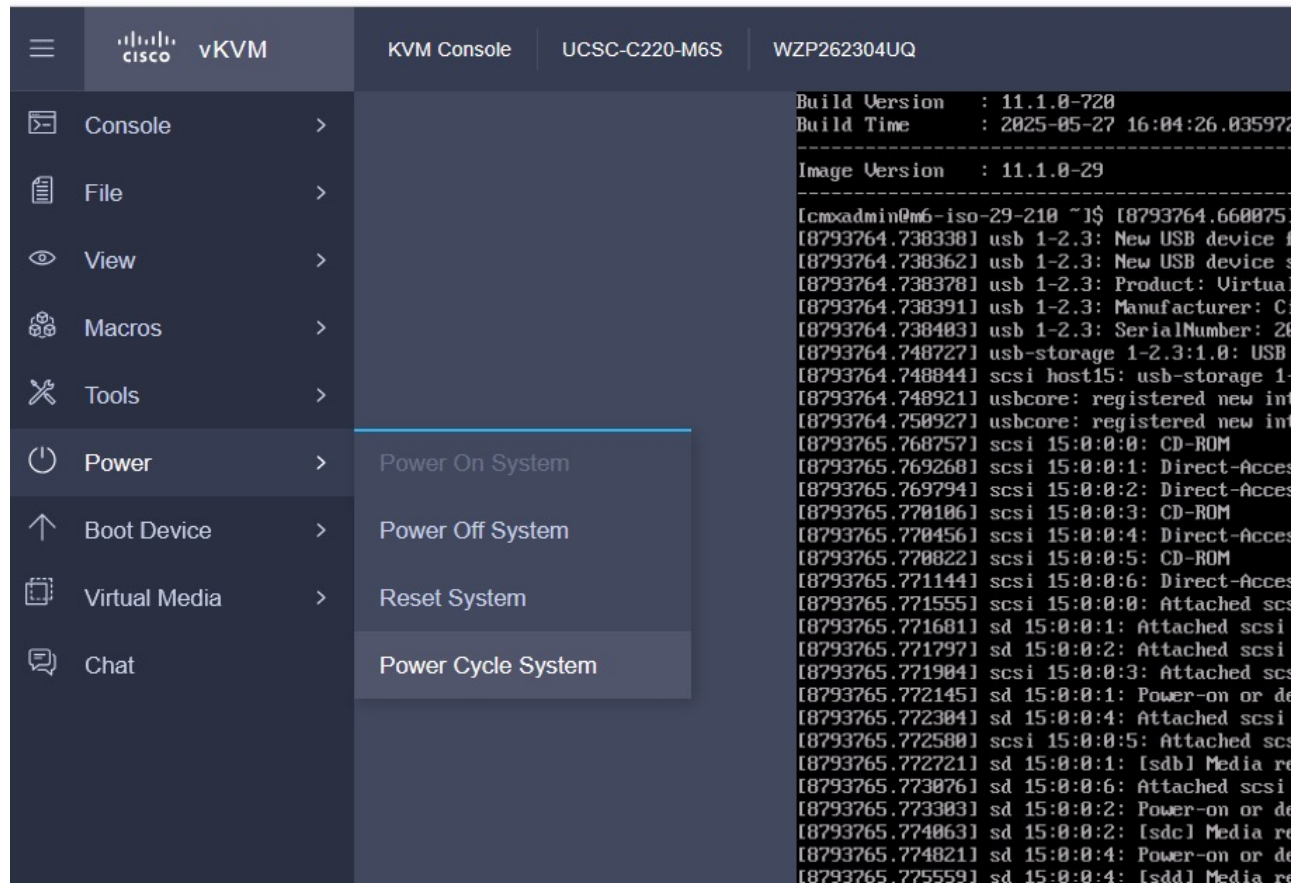
Use this procedure to deploy or upgrade Cisco CMX on an M6 device. This process differs from previous versions such as CMX 10.6.3 due to OS and hardware changes.

Deploying the Cisco CMX 11.1.0 ISO version differs from deploying the Cisco CMX 10.6.3.

Procedure**Step 1**

After mounting the Cisco CMX ISO image, in the Kernel-based Virtual Machine (vKVM) virtualization module, select **Power > Power Cycle System**.

Figure 40: Power Cycle System



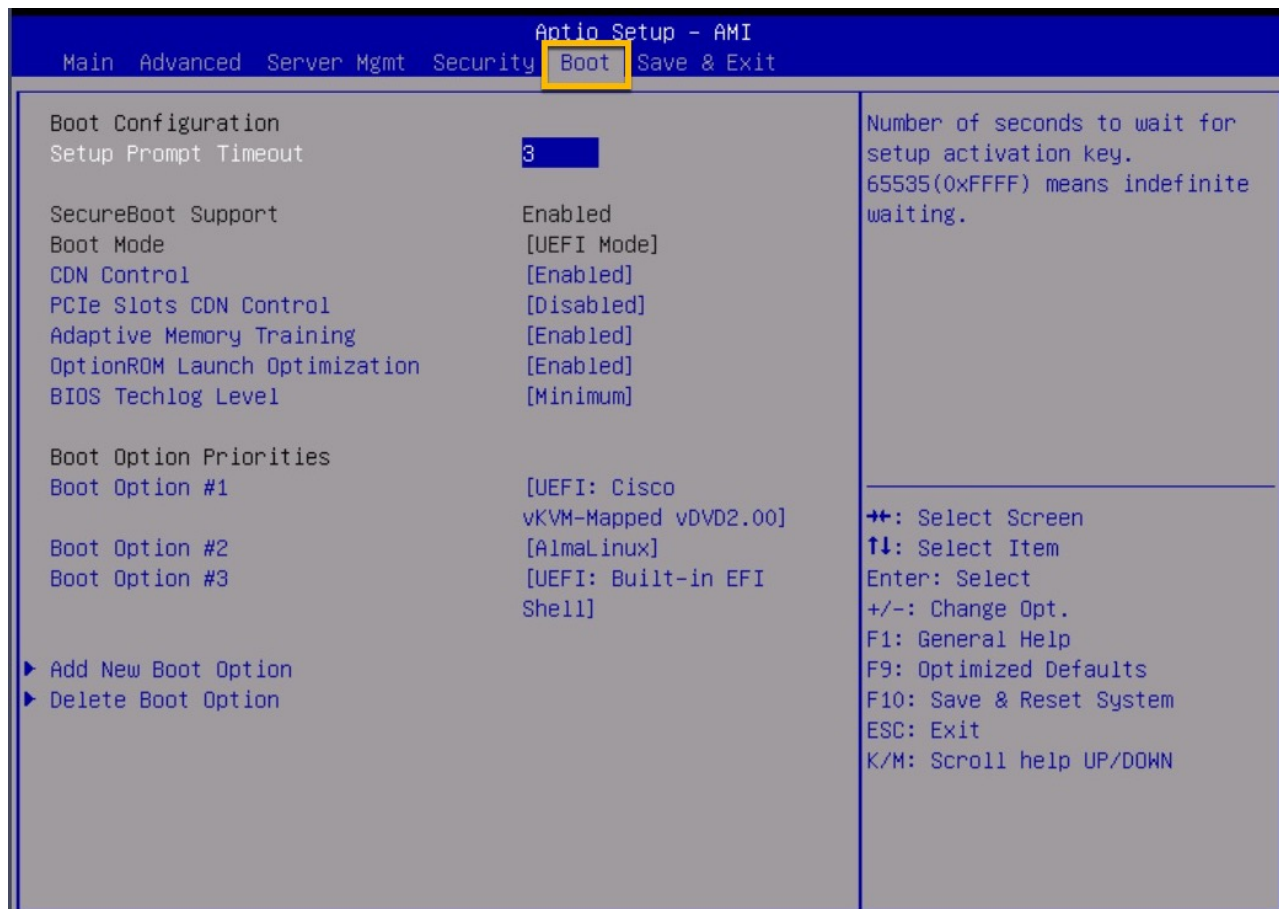


Step 2 To enter into BIOS setup, press **F2**.

If Cisco CMX 11 ISO is installed before, it is possible that the **AlmaLinux** boot option is displayed.

If the **AlmaLinux** boot option is not displayed, skip the next steps and see step 5.

Figure 41: AlmaLinux Boot Option



Step 3 Select **Delete Boot Option** (at the end of the window) and press **Enter**.

Figure 42: Delete Boot Option

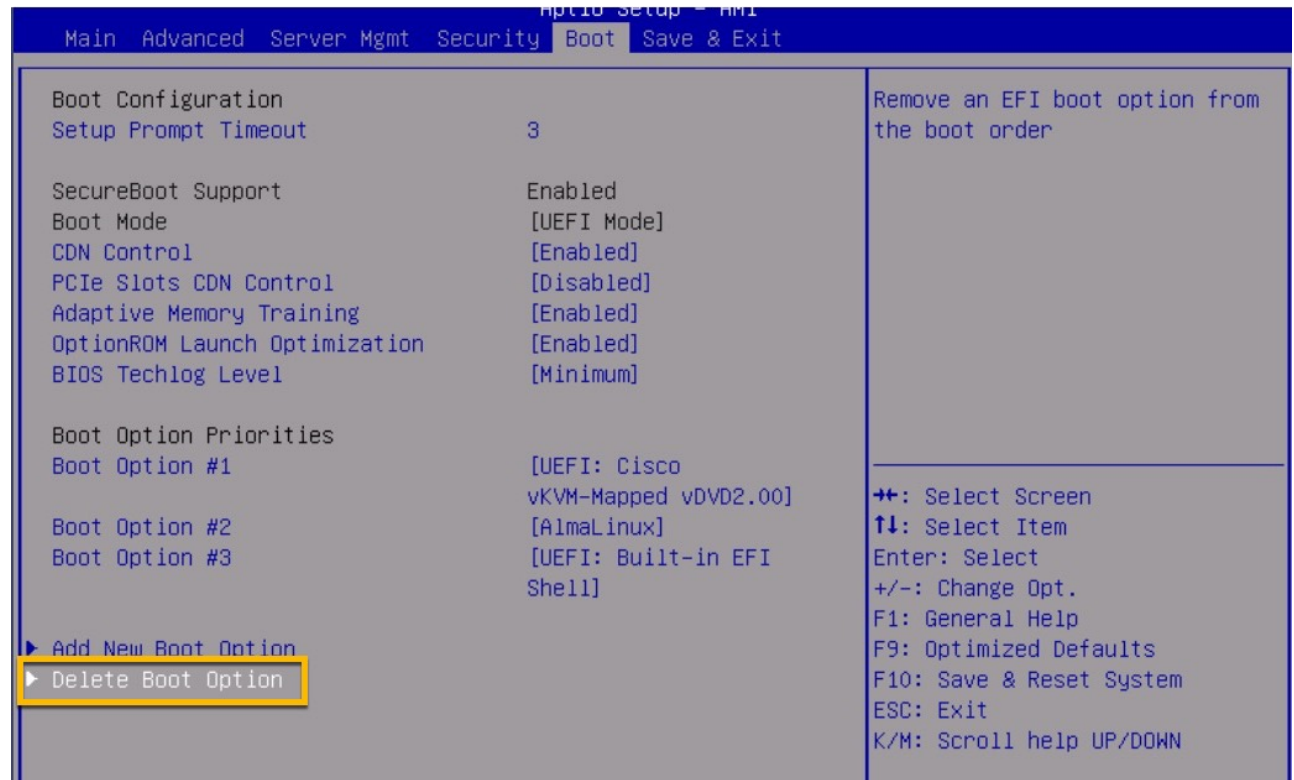
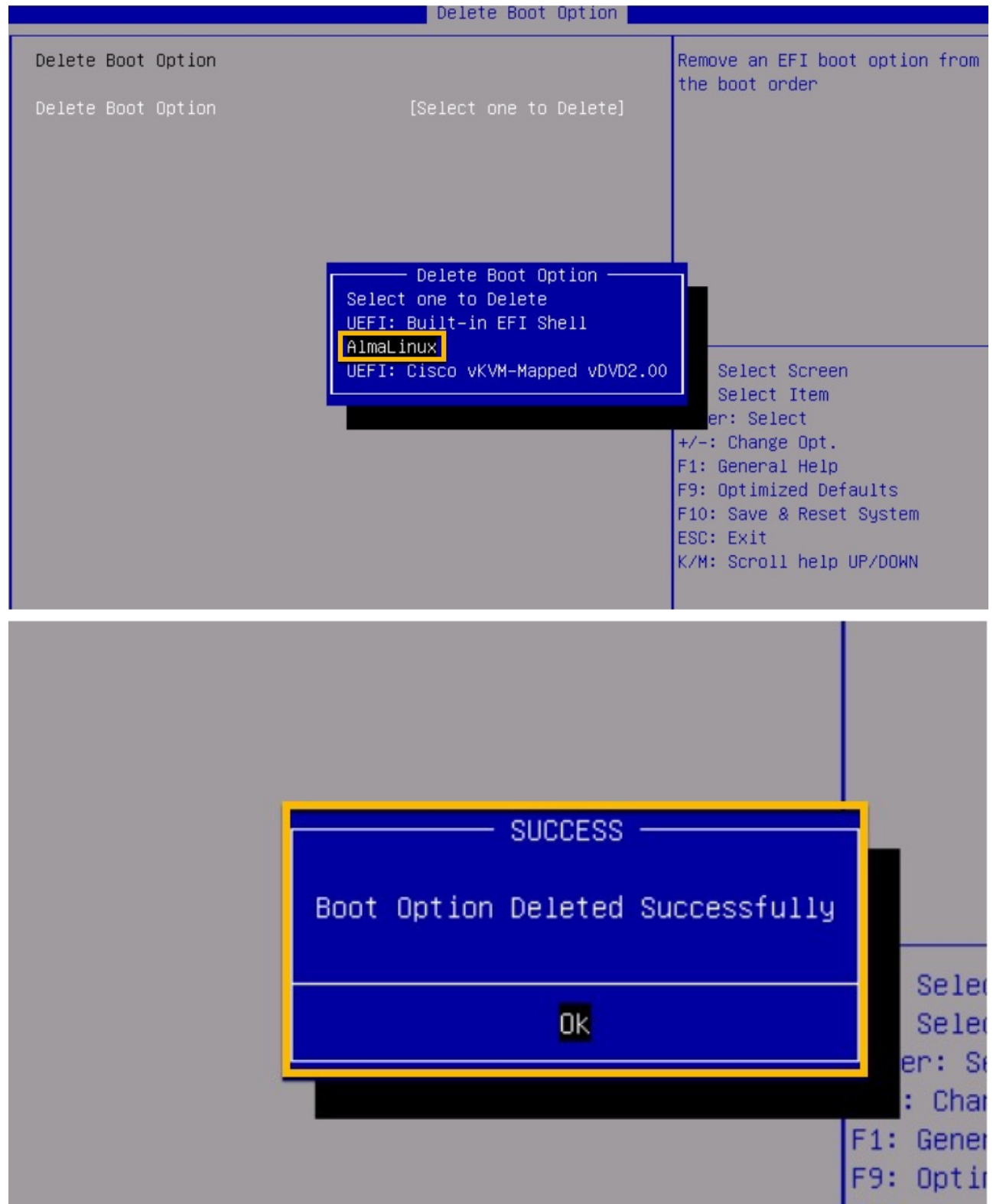


Figure 43: Delete Boot Option Sequence

Step 4 Select **AlmaLinux** option and remove the same.

Figure 44: Delete Boot Option - AlmaLinux

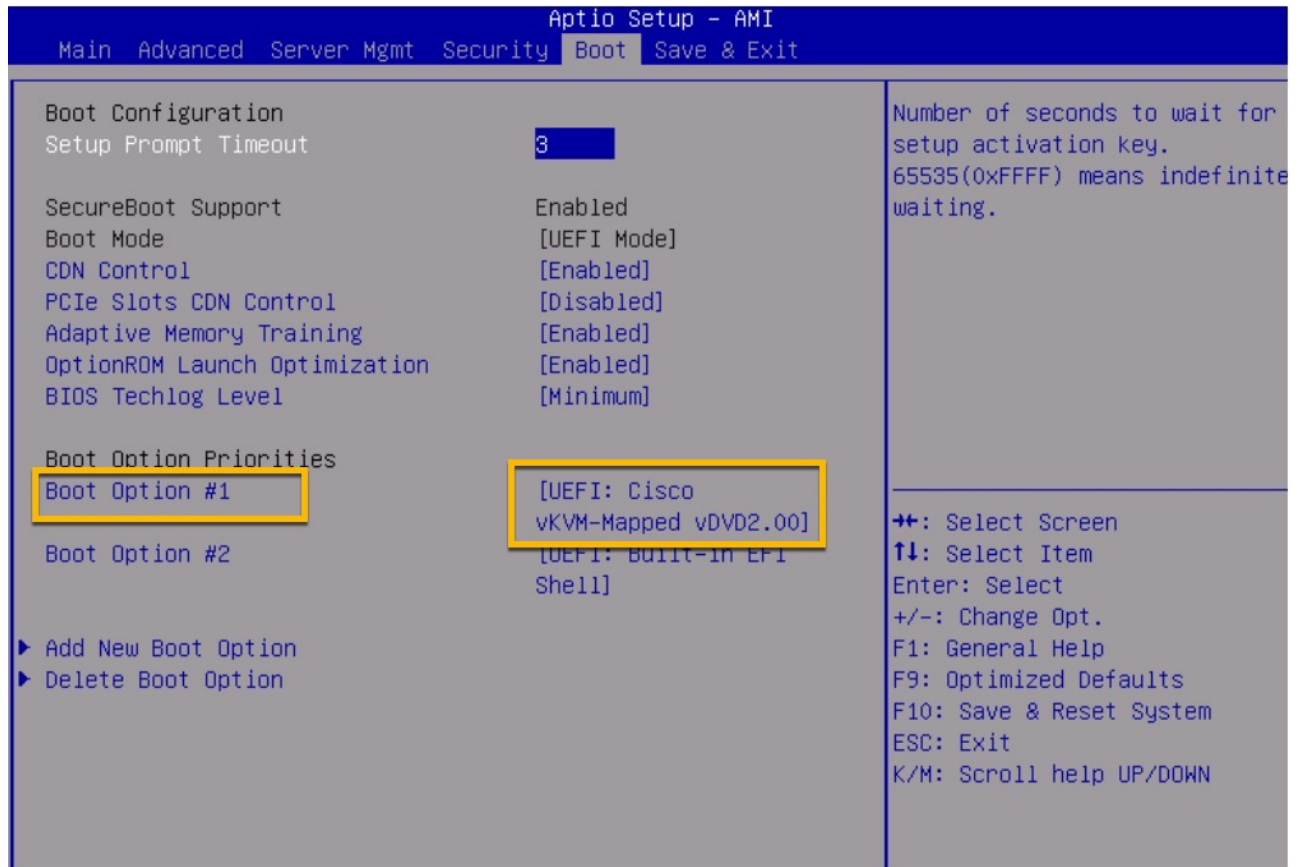


Step 5 To exit from the current window, press **esc**.

Step 6 Navigate to the **Boot Options** tab.

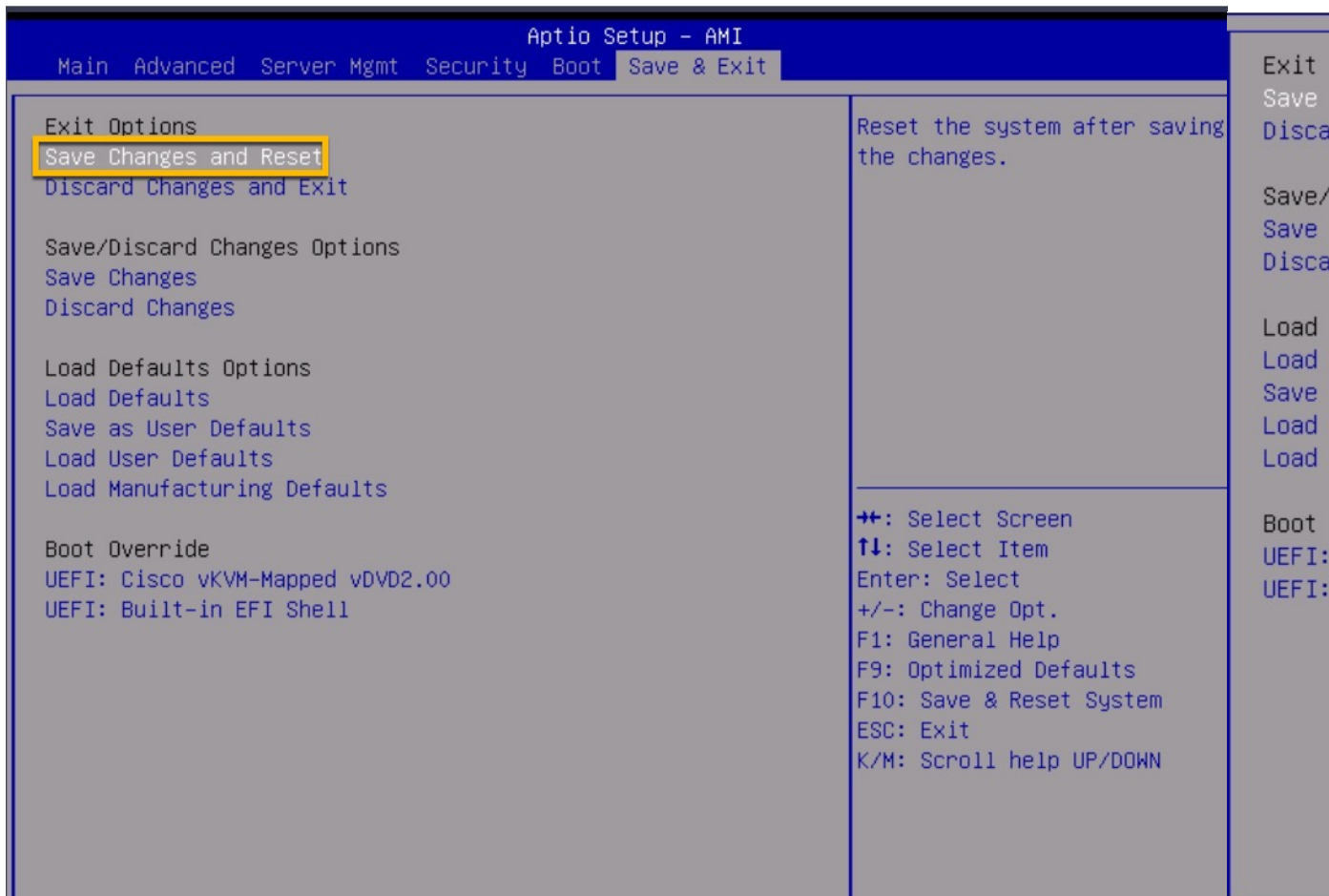
Step 7 In the **Boot Option Priorities** section, to change the order of the boot options, select the particular entry and press the **Shift and (+/-)** keys at the same time to rearrange the entry up or down.

Verify that [UEFI: Cisco vKVM-Mapped] gets the first preference in the order. [UEFI: Cisco vKVM-Mapped] must display as boot option one.



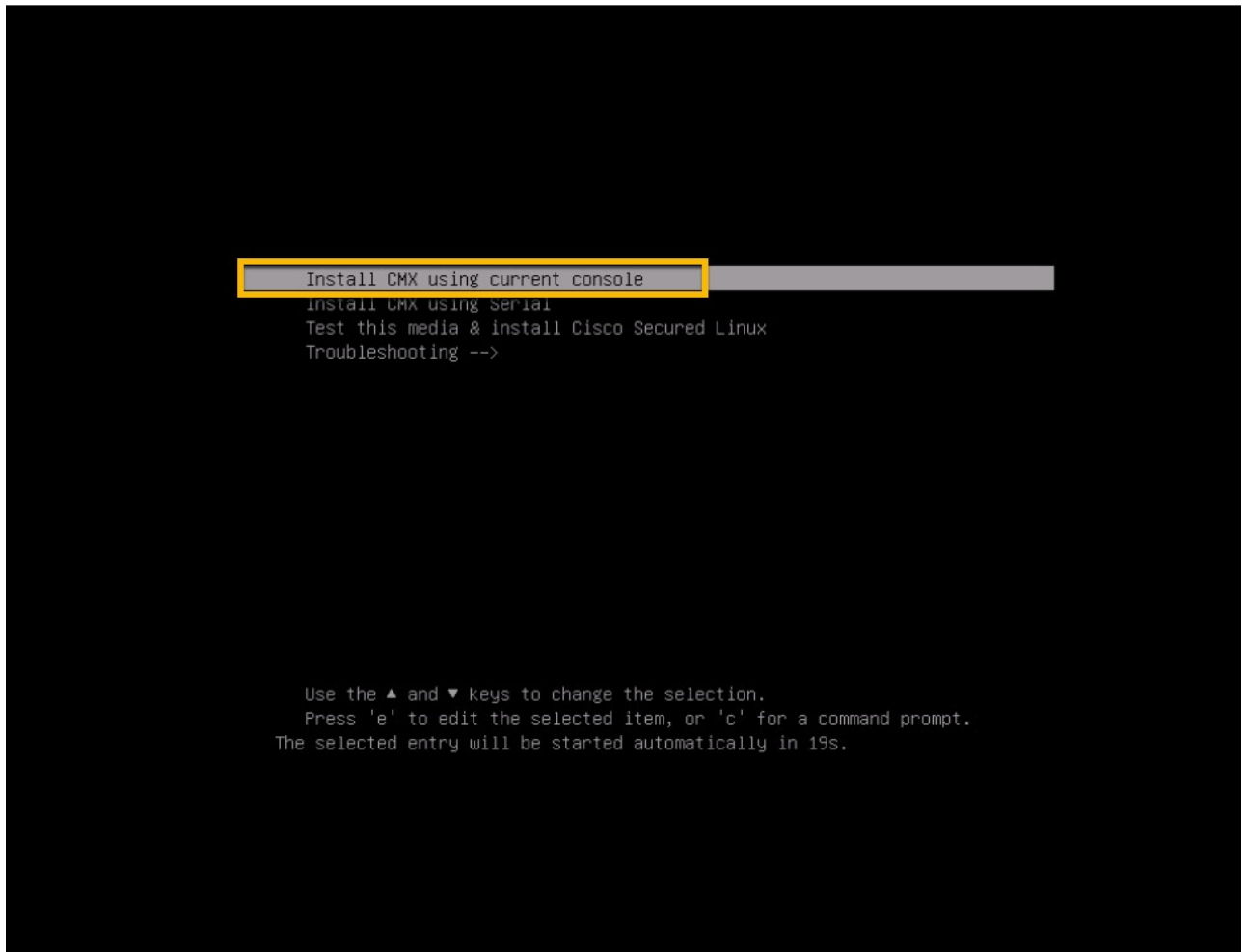
Step 8 Navigate to the **Save & Exit** tab, select **Save Changes & Reset** and press **Enter**.

Step 9 In the **Save & reset** pop-up window, select **Yes** to save configuration and reset and then press **Enter**.

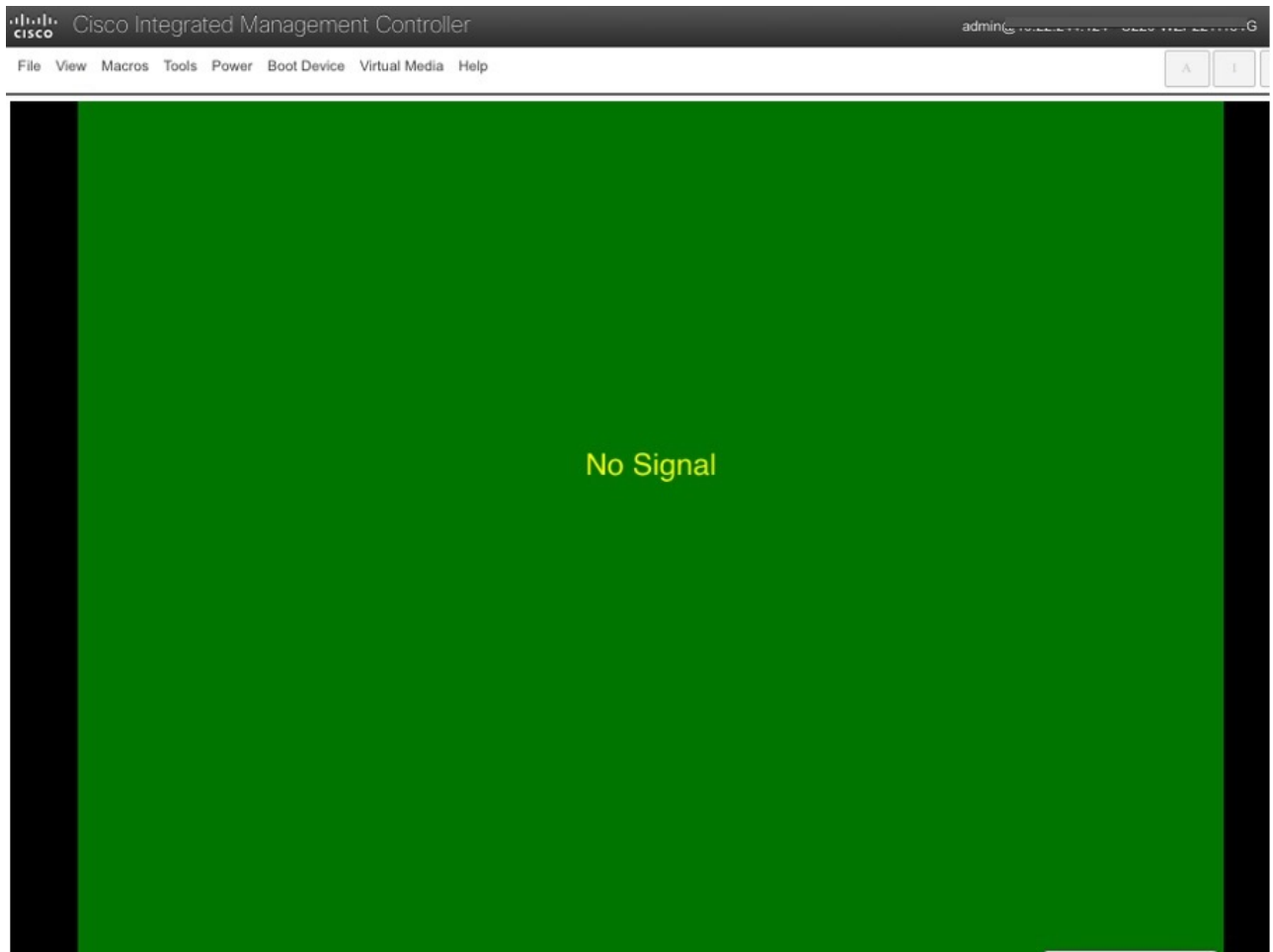


The boot process is initiated.

- Step 10** Select installation option either using the current console or serial. By default, current console is selected.
We recommend that you verify if ISO is mounted and then proceed.

Figure 45: Installation Options**Note**

The installation process is about two to three hours. You must not reboot during this time. If a green screen is displayed with a message indicating that there is no signal, press **Enter** and wait.

Figure 46: No Signal Window**Note**

Once you complete the Operating System (OS) installation, the system loads Alma Linux 8, and the Cisco CMX welcome window is displayed.

Cisco CMX 11 is installed on the M6 device. The device boots into Alma Linux 8 and displays the Cisco CMX **Welcome** window.

What to do next

Proceed with the Cisco CMX ISO deployment process. For more information about Cisco CMX Release 11.1.0, see [Release Notes for Cisco Connected Mobile Experiences \(CMX\) Release 11.1.0](#).