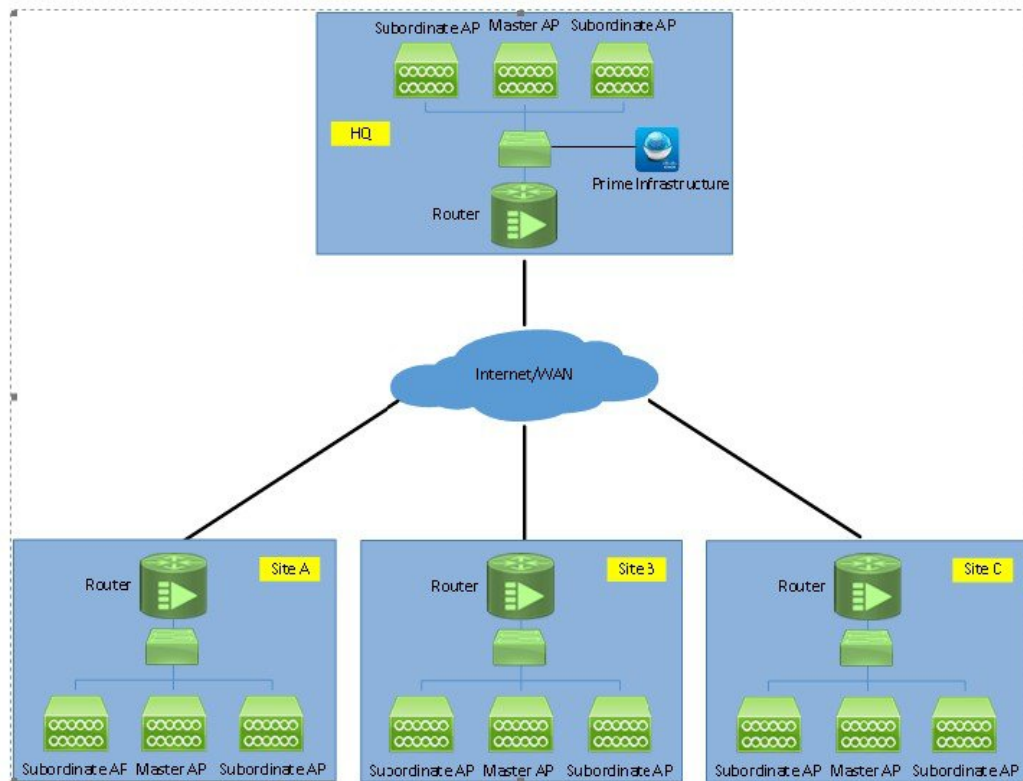




Managing Mobility Express Deployments from Cisco Prime Infrastructure

Cisco Prime Infrastructure 3.01 or later can be utilized to monitor multiple instances of Cisco Mobility Express deployment.



- [Adding Mobility Express to Prime, on page 1](#)

Adding Mobility Express to Prime

Perform the following steps to add the controllers:

Procedure

Step 1 Login to Cisco Prime

© 2009-2015 Cisco Systems, Inc., Cisco, Cisco Systems, and Cisco Systems logo are registered trademarks of Cisco Systems, Inc. and/or its affiliates in the U.S. and certain other countries. The copyrights to certain works contained in this software are owned by other third parties and used and distributed under license. Certain components of this software are licensed under the GNU [GPL 2.0](#), [GPL 3.0](#), [LGPL 2.1](#), [LGPL 3.0](#) and [AGPL 3.0](#).

Step 2 Navigate to Configuration / Network / Network Devices, click on **Add Device**.

Device Name	Reachability	IP Address	DNS Name	Device Type
<input type="text"/>	<input type="text"/>	<input type="text"/>	<input type="text"/>	

Step 3 Enter the IP address of the Mobility Express controller.

Add Device

*** General Parameters**

IP Address

DNS Name

License Level: Full

Credential Profile: --Select--

Add **Verify Credentials** **Cancel**

Step 4 Enter the SNMP Parameters and click Add.

Note You must configure the SNMP community strings on the Mobility Express controller prior to adding the device in Prime.

Add Device

*** SNMP Parameters**

Version: v2c

* SNMP Retries: 2

* SNMP Timeout: 10 (secs)

* SNMP Port: 161

* Read Community:

* Confirm Read Community:

Write Community:

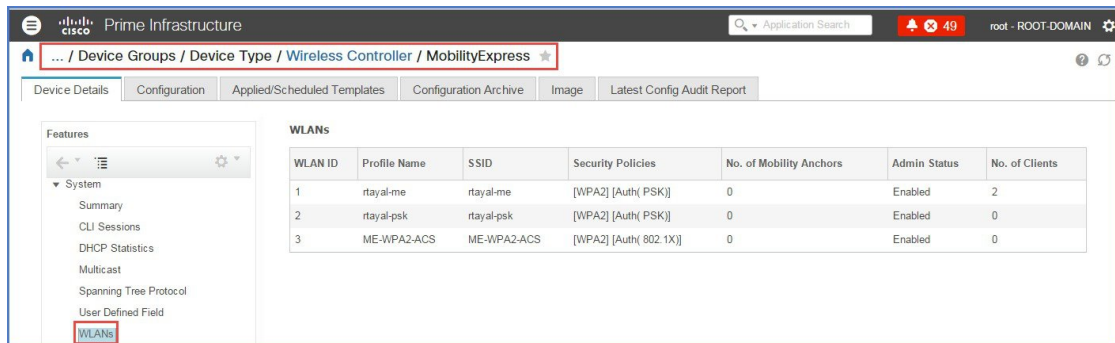
Confirm Write Community:

Add **Verify Credentials** **Cancel**

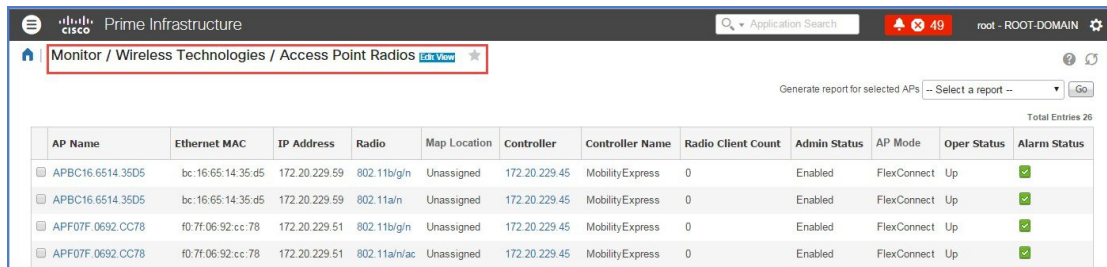
Step 5 After the device is added, it shows up in the **All Devices** list.



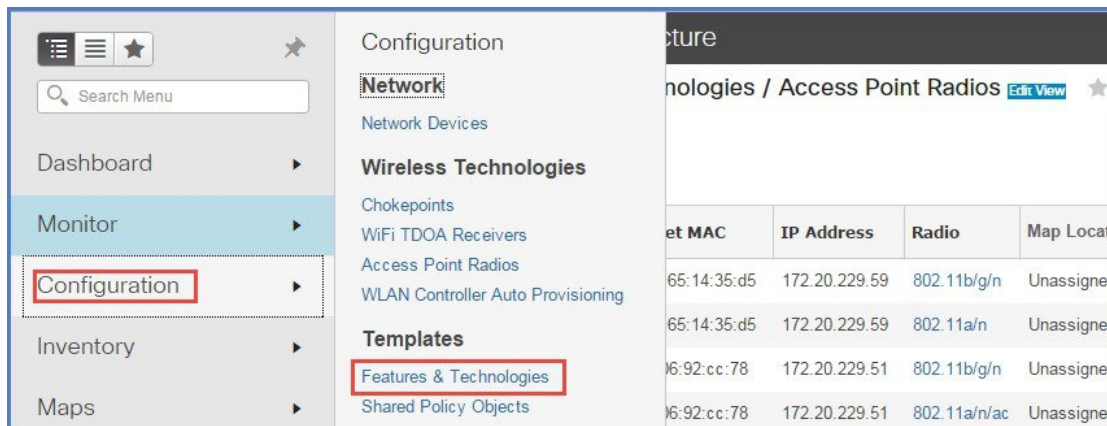
Step 6 To view the list of WLANs, navigate to **Network Devices > Device Groups > Device Type > Wireless Controller** and select the Mobility Express controller you added in Step 4.



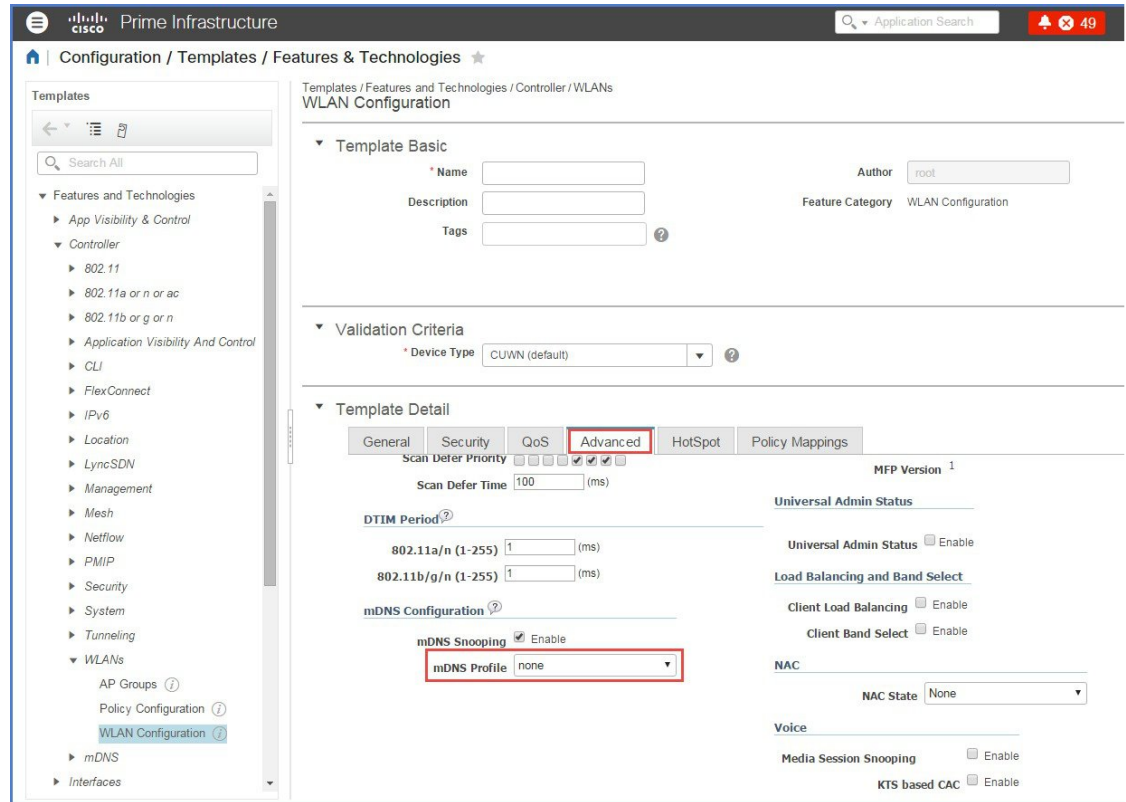
Step 7 To view the list of AP, navigate to **Monitor > Wireless Technologies > Access Point Radios**



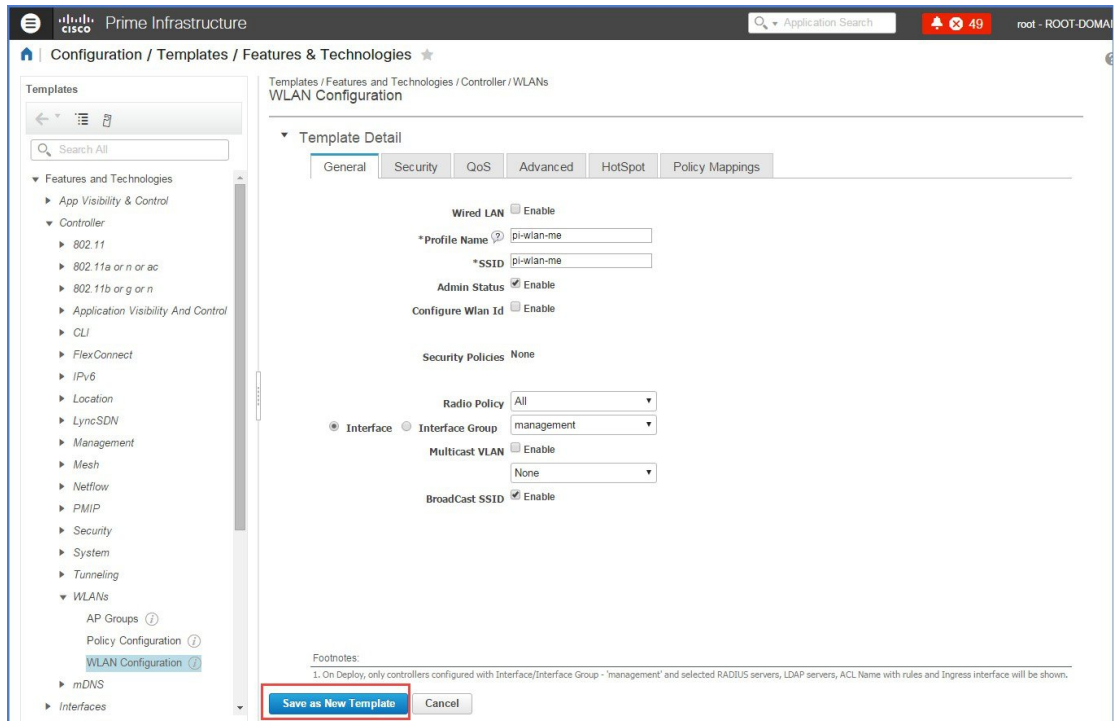
Step 8 To configure WLANS from Prime on Mobility Express, navigate to **Configuration > Feature & Technologies** under **Template**.



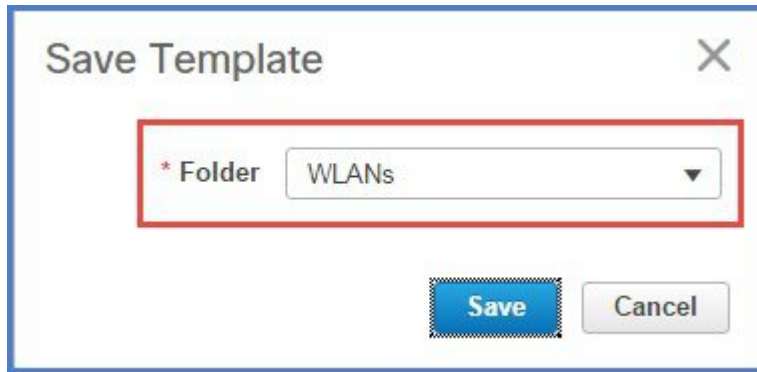
Step 9 Navigate to **Controller > WLAN > WLAN Configuration**. Enter the Template name and the **Template Detail**.



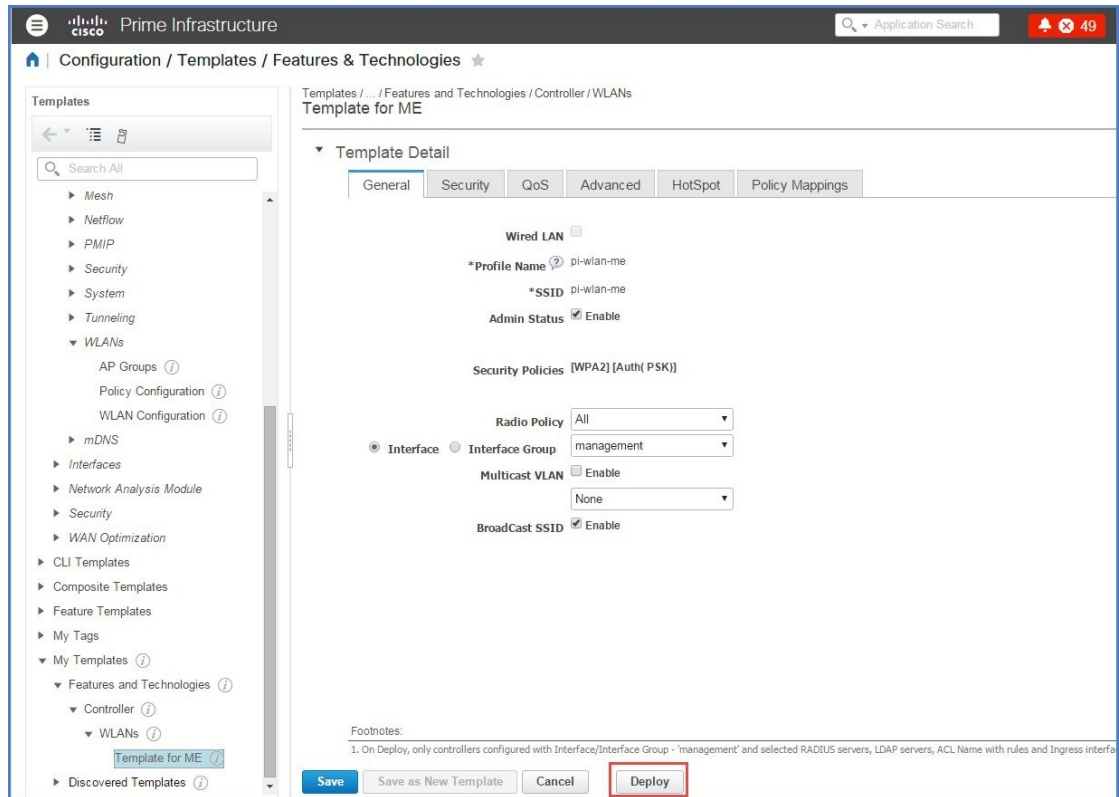
Step 10 On the **Advanced Tab**, make sure mDNS profile is set to **none** as it is not supported on Mobility Express.



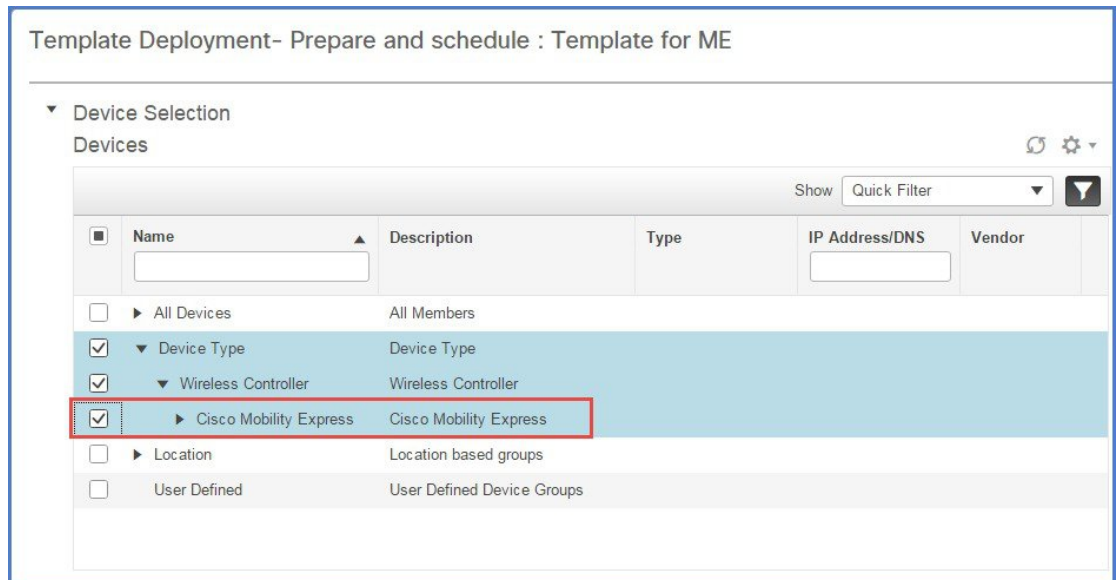
Step 11 To save the Template, click on ‘Save as New Template’ and select the folder where the templates need to be saved.



Step 12 To deploy the template to Mobility Express, click **Deploy**.



Step 13 Select the **Cisco Mobility Express** controller and click OK.



Step 14 Navigate to **Job Dashboard** to view the Job Status

Prime Infrastructure

Administration / Dashboards / Job Dashboard / Template for ME_1

Recurrence None
Description N/A

Showing latest 5 Job instances [Show All](#) Total 1

Run ID	Status	Duration (hh:mm:ss)	Start Time	Completion Time
1637325	Success	00:00:02	2016-03-17 13:03	2016-03-17 13:03

Job summary Successful deployment on 1 device(s).

Job Results for Template for ME

Device	Status	Transcript
172.20.229.45	Success	Deploy succeeded