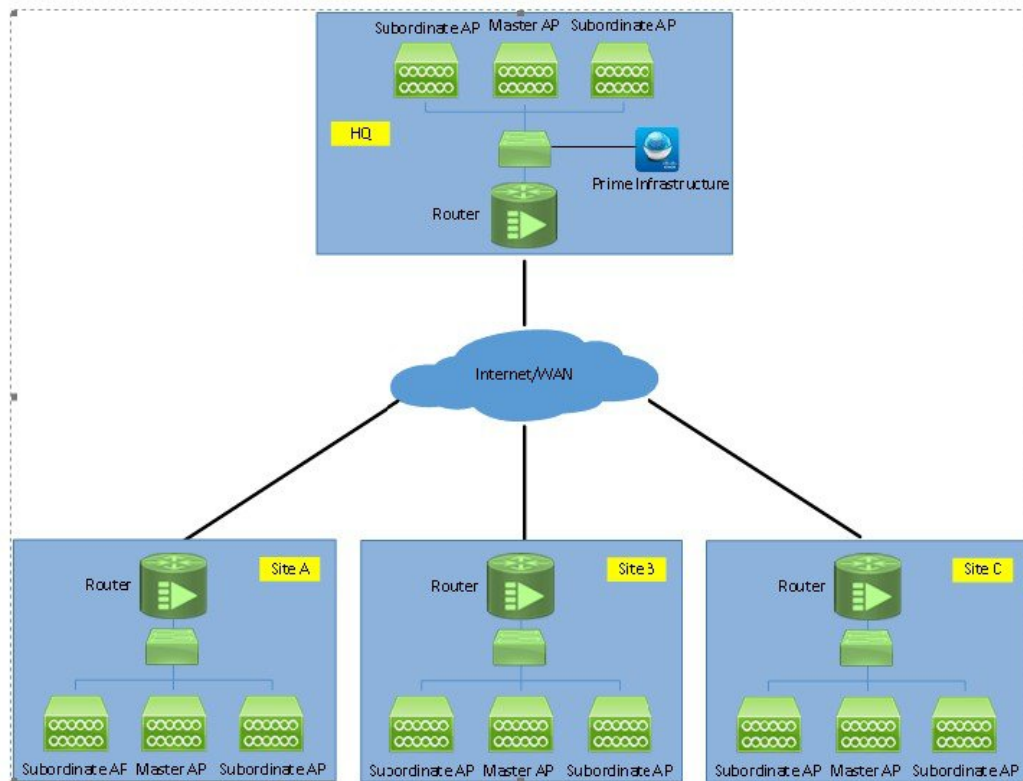




# Managing Mobility Express Deployments from Cisco Prime Infrastructure

Cisco Prime Infrastructure 3.01 or later can be utilized to monitor multiple instances of Cisco Mobility Express deployment.



- [Adding Mobility Express to Prime, on page 1](#)

## Adding Mobility Express to Prime

Perform the following steps to add the controllers:

## Procedure

### Step 1

Login to Cisco Prime

© 2009-2015 Cisco Systems, Inc., Cisco, Cisco Systems, and Cisco Systems logo are registered trademarks of Cisco Systems, Inc. and/or its affiliates in the U.S. and certain other countries. The copyrights to certain works contained in this software are owned by other third parties and used and distributed under license. Certain components of this software are licensed under the GNU [GPL 2.0](#), [GPL 3.0](#), [LGPL 2.1](#), [LGPL 3.0](#) and [AGPL 3.0](#).

### Step 2

Navigate to Configuration / Network / Network Devices, click on **Add Device**.

Device Name	Reachability	IP Address	DNS Name	Device Type
<input type="text"/>	<input type="text"/>	<input type="text"/>	<input type="text"/>	

### Step 3

Enter the IP address of the Mobility Express controller.

The screenshot shows the 'Add Device' dialog box with the 'General Parameters' section active. The 'IP Address' field is highlighted with a red box. The 'General' tab is selected in the left sidebar. The 'DNS Name' field is empty. The 'License Level' is set to 'Full'. The 'Credential Profile' is set to '--Select--'. The 'Add' button is highlighted in blue.

**Step 4** Enter the SNMP Parameters and click Add.

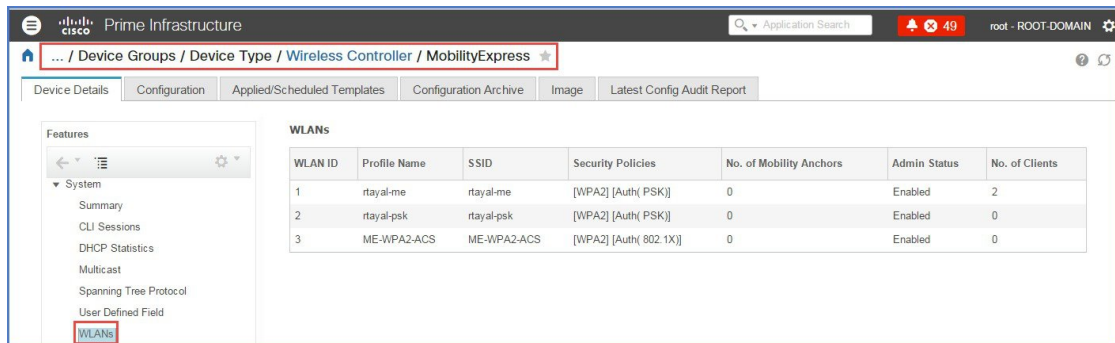
**Note** You must configure the SNMP community strings on the Mobility Express controller prior to adding the device in Prime.

The screenshot shows the 'Add Device' dialog box with the 'SNMP Parameters' section active. The 'SNMP Parameters' section is highlighted with a red box. The 'General' tab is marked with a green checkmark in the left sidebar. The 'Version' is set to 'v2c'. The 'SNMP Retries' is set to 2. The 'SNMP Timeout' is set to 10 (secs). The 'SNMP Port' is set to 161. The 'Read Community', 'Confirm Read Community', 'Write Community', and 'Confirm Write Community' fields are empty. The 'Add' button is highlighted in blue.

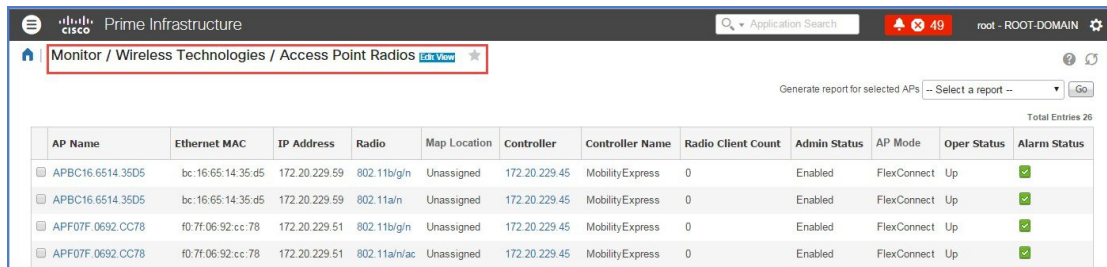
**Step 5** After the device is added, it shows up in the **All Devices** list.



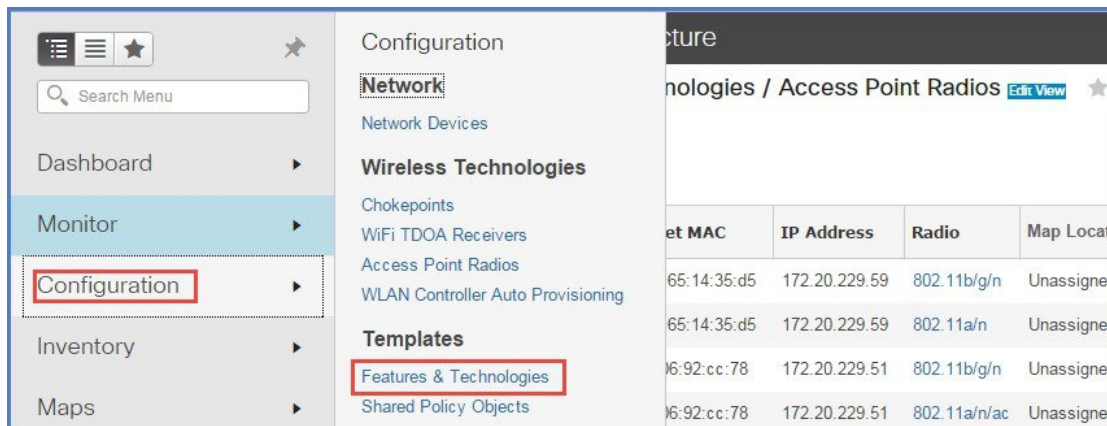
**Step 6** To view the list of WLANs, navigate to **Network Devices > Device Groups > Device Type > Wireless Controller** and select the Mobility Express controller you added in Step 4.



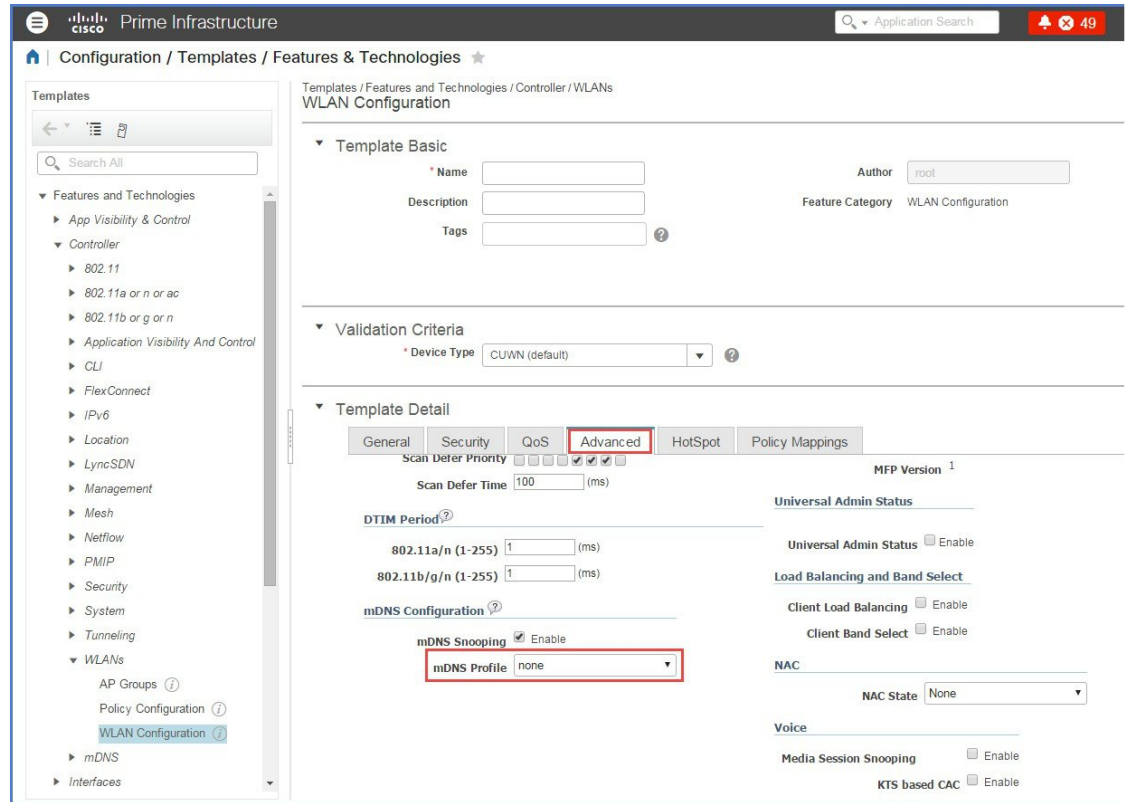
**Step 7** To view the list of AP, navigate to **Monitor > Wireless Technologies > Access Point Radios**



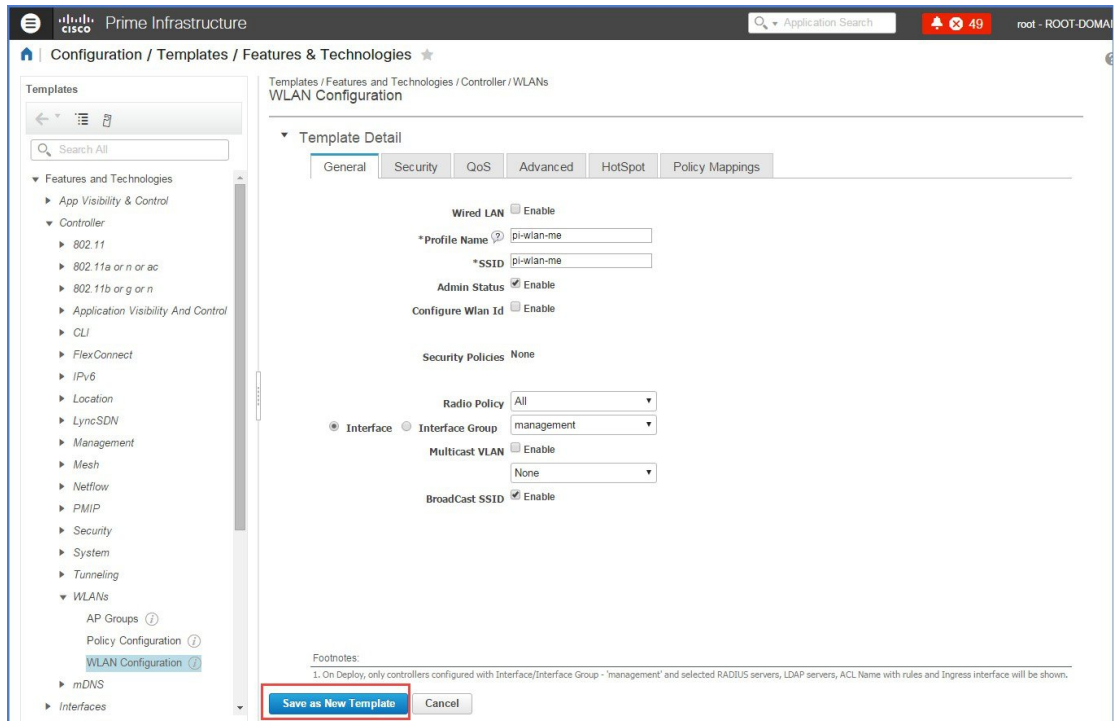
**Step 8** To configure WLANS from Prime on Mobility Express, navigate to **Configuration > Feature & Technologies** under **Template**.



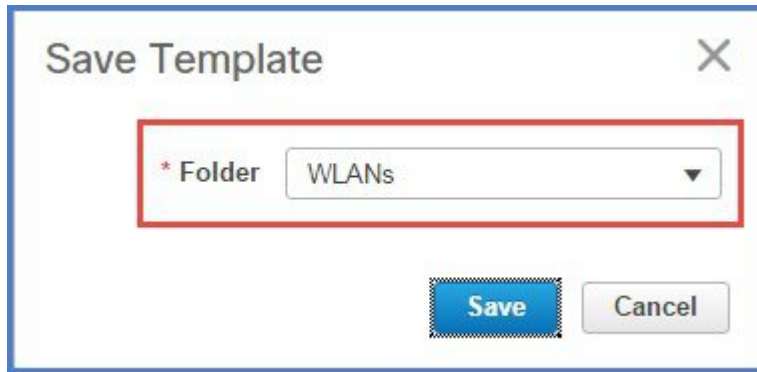
**Step 9** Navigate to **Controller > WLAN > WLAN Configuration**. Enter the Template name and the **Template Detail**.



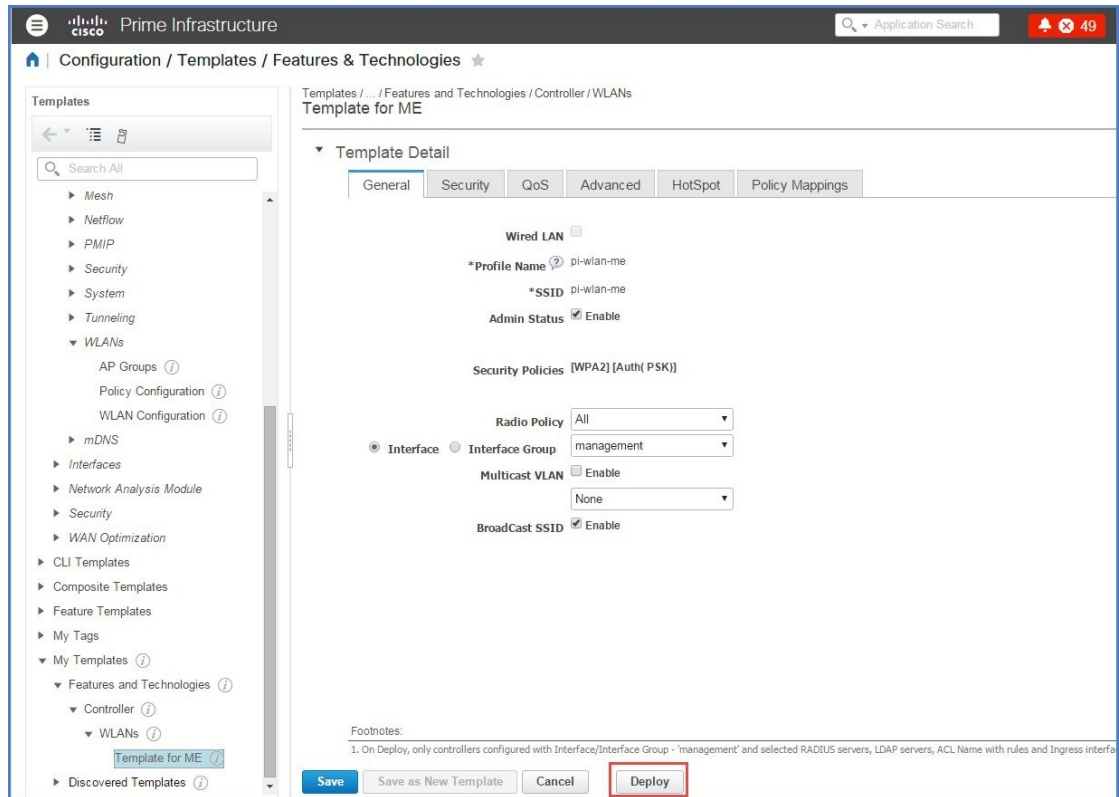
**Step 10** On the **Advanced Tab**, make sure mDNS profile is set to **none** as it is not supported on Mobility Express.



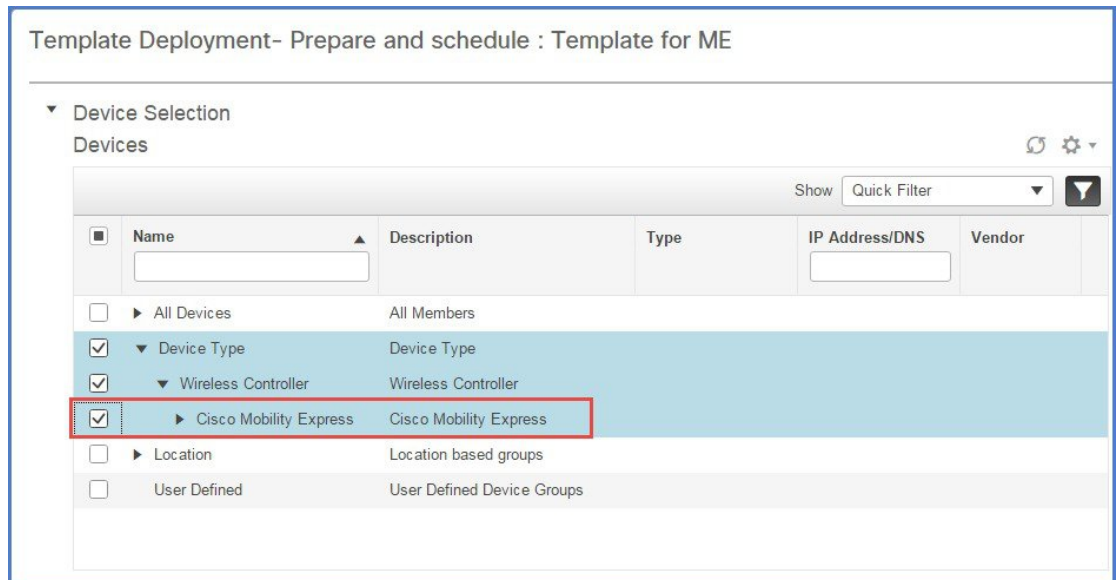
**Step 11** To save the Template, click on ‘Save as New Template’ and select the folder where the templates need to be saved.



**Step 12** To deploy the template to Mobility Express, click **Deploy**.



**Step 13** Select the **Cisco Mobility Express** controller and click OK.



**Step 14** Navigate to **Job Dashboard** to view the Job Status

Prime Infrastructure

Administration / Dashboards / Job Dashboard / Template for ME\_1

Recurrence None  
Description N/A

Showing latest 5 Job instances [Show All](#) Total 1

Run ID	Status	Duration (hh:mm:ss)	Start Time	Completion Time
1637325	Success	00:00:02	2016-03-17 13:03	2016-03-17 13:03

Job summary Successful deployment on 1 device(s).

Job Results for Template for ME

Device	Status	Transcript
172.20.229.45	Success	Deploy succeeded