



# Enable AD CS to Issue "Client and Server" Certificates

---

- [Enable AD CS to Issue "Client and Server" Certificates, on page 1](#)

## Enable AD CS to Issue "Client and Server" Certificates



---

**Note** The CA component of Microsoft Active Directory Certificate Services (AD CS) must be able to issue a certificate that can be used for authentication of the Expressway as client or server.

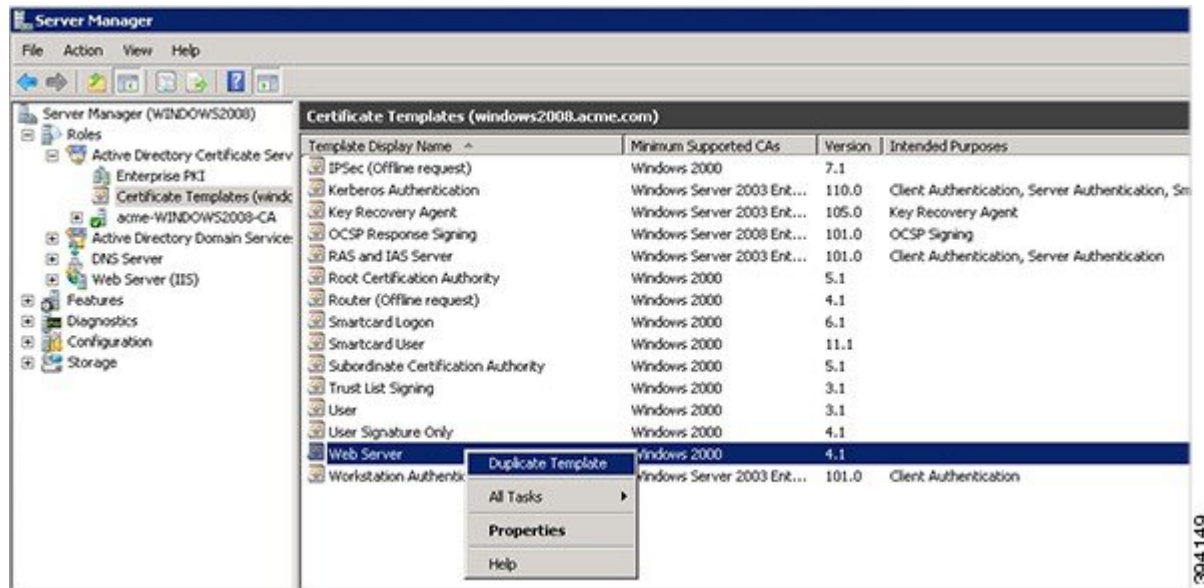
---

AD CS in Windows Server 2008 Standard R2 (and later) can issue these types of certificates, if you create a certificate template for them. **Earlier versions of Windows Server Standard Edition are not suitable.**

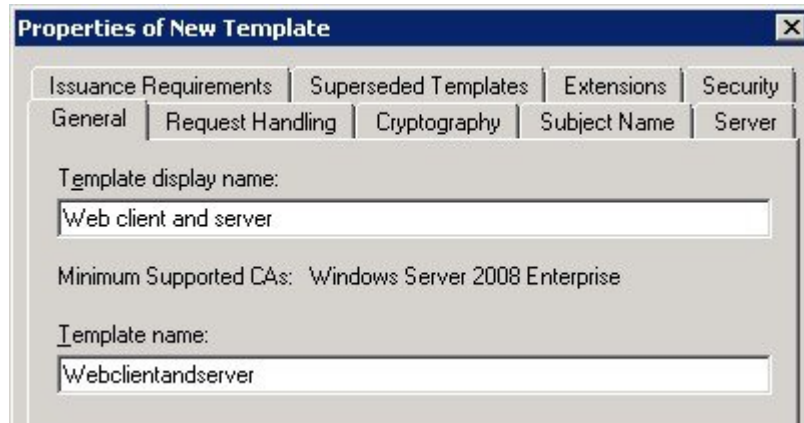
The default "Web Server" certificate template in AD CS creates a certificate for Server Authentication. The server certificate for the Expressway also needs Client Authentication if you want to configure a neighbor or traversal zone with mutual authentication (where **TLS verify mode** is enabled).

To set up a certificate template with both Server and Client authentication:

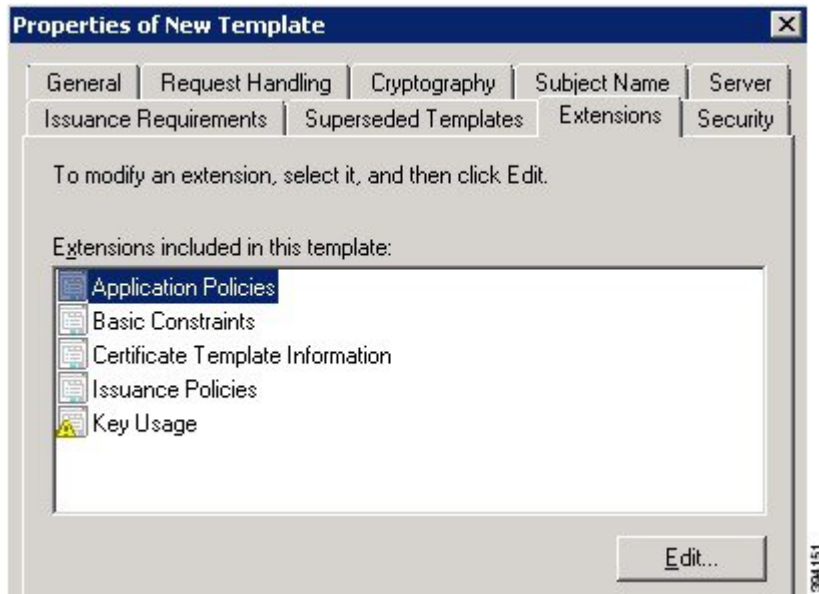
1. In Windows, launch **Server Manager** (**Start > Administrative Tools > Server Manager**).  
(Server Manager is a feature included with server editions of Windows.)
2. Expand the **Server Manager** navigation tree to **Roles > Active Directory Certificate Services > Certificate Templates (<domain>)**.
3. Right-click on **Web Server** and select **Duplicate Template**.



4. Select **Windows Server 2003 Enterprise** and click **OK**.
5. On the **General** tab, enter the **Template display name** and **Template name**, for example `Web client and server` and `Webclientandserver`.



6. On the **Extensions** tab, select **Application Policies** and click **Edit**.

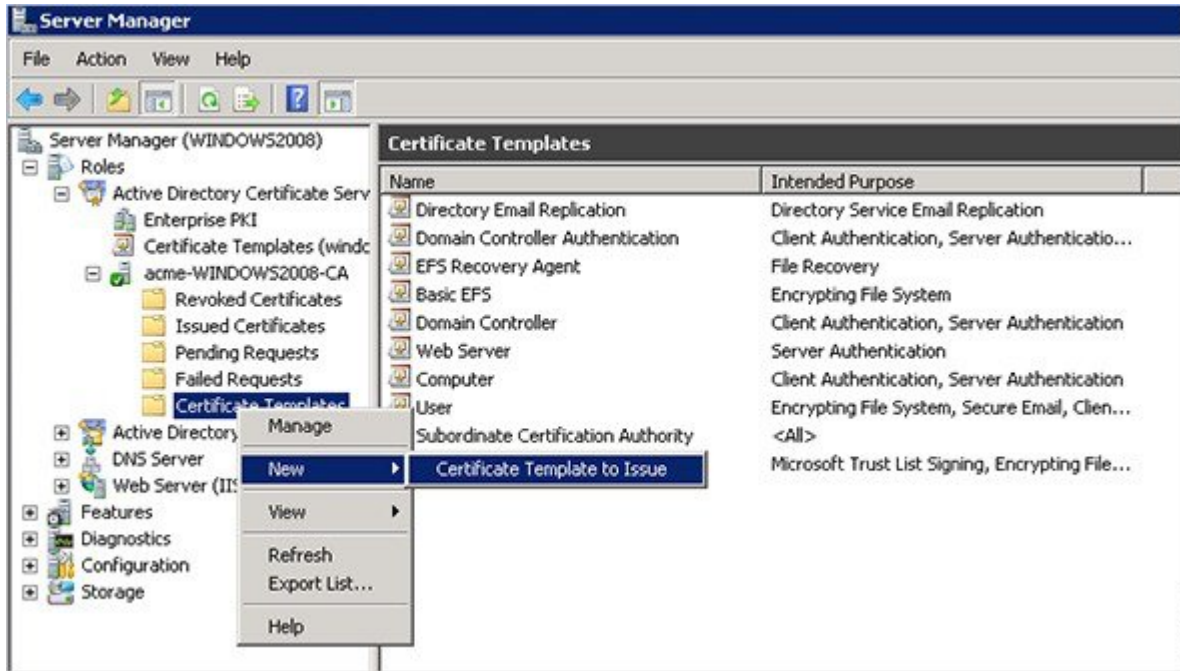


7. Add **Client Authentication** to the set of application policies:
  - a. Click **Add**
  - b. Select **Client Authentication** and click **OK**
  - c. Click **OK**

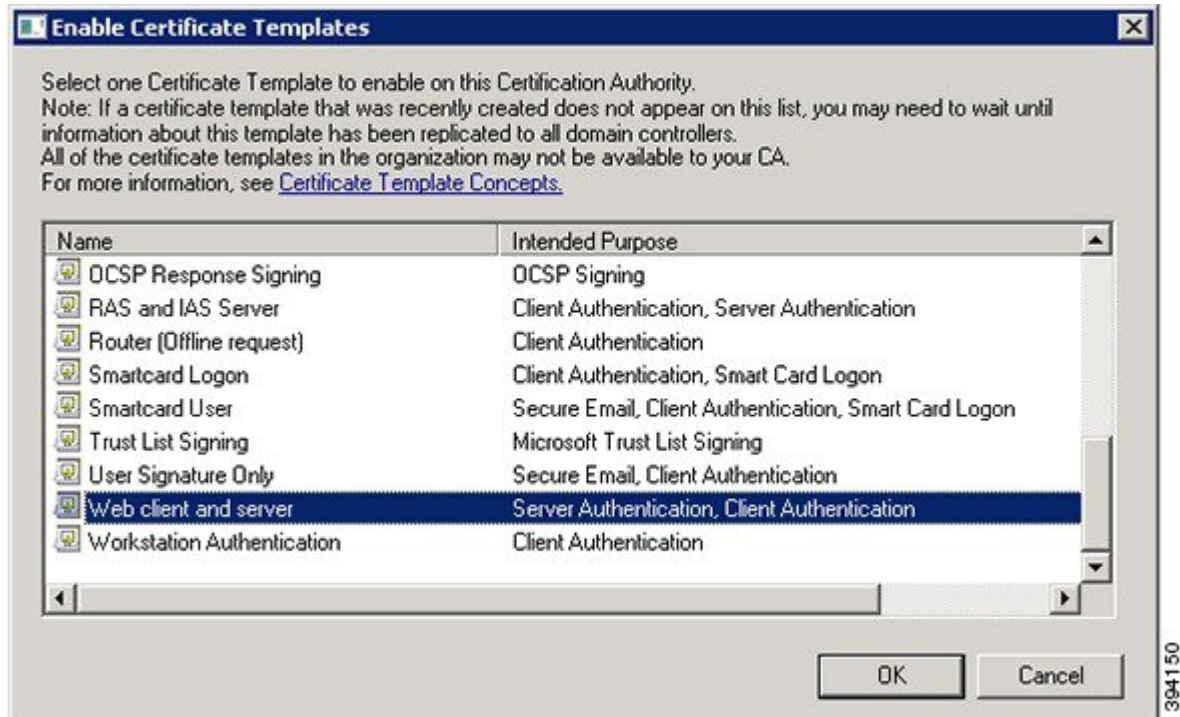


8. Click **OK** to complete the addition of the new template.
9. Add the new template to the Certificate Authority:

- a. Go to **Roles > Active Directory Certificate Services > <your certificate authority>**.
- b. Right-click **Certificate Templates** and select **New > Certificate Template to Issue**



- c. Select your new **Web client and server** template and click **OK**.



The new **Web client and server** template can now be used when submitting a certificate request to the Microsoft Certification Authority.

