



Installation of Cisco Business Edition 6000 or 7000 appliance

- [Design Your Deployment, on page 1](#)
- [Set Up Your Appliance, on page 3](#)
- [Set Up Your Applications, on page 12](#)

Design Your Deployment

Review the following topics to design your deployment.

Plan Your UC Applications

Before You Begin:

Before you unpack the server, verify that all of the following items are present. If any of the item is missing or appears to be damaged, contact your supplier immediately.

- Cisco Business Edition 6000 or 7000 appliance
- Rack-mounting kit
- Power cord(s)
- Any other required cables (not included with appliance, such as KVM adapter, Ethernet cable, Console cable).

Ensure that you have the following before you unpack the server:

- Space in a standard 19-inch equipment rack (1RU for each BE6000 appliance or 2RU for each BE7000 appliance).
- 110 / 220 VAC power feeds.
- VGA monitor and USB keyboard (not supplied) – for initial installation only.
- Ethernet network port(s) configured for appliance's local area network access.

For More Instructions:

- To understand the BE6000 appliance's front and rear panels, see the Detailed Views chapter of the *Spec Sheet for Cisco UCS C220 M6 SFF Rack Server (M6S chassis)*.
- To understand the BE7000 appliance's front and rear panels, see the Detailed Views chapter of the *Spec Sheet for Cisco UCS C240 M6 SFF Rack Server (M6SX chassis)*.
- To rack-mount a BE6000 appliance, see the rack-mount instructions in the *Cisco UCS C220 M6 Server Installation and Service Guide*.
- To rack-mount a BE7K appliance, see the rack-mount instructions in the *Cisco UCS C240 M6 Server Installation and Service Guide*.

Make sure that your Cisco Business Edition 6000 or 7000 appliance is rack-mounted and connected to power and data networks.

Before you begin any installation, plan which UC applications you are going to install. For information on the UC applications that are available for installation, and on how to design your Business Edition collaboration deployment refer to the following sites:

- *Unified Communications in a Virtualized Environment*—This website contains information on the Cisco virtualized applications that are available for installation on a Cisco Business Edition 6000 or 7000 appliance, and how to design your deployment.

<http://www.cisco.com/go/virtualized-collaboration>

- *Infrastructure & Co-residency requirements* —This web page contains information on the conditions that you must meet to run Cisco applications and any third-party applications on a Business Edition 6000/7000 appliance

https://www.cisco.com/c/dam/en/us/td/docs/voice_ip_comm/uc_system/virtualization/cisco-collaboration-infrastructure.html

- *Preferred Architecture Guides* —Preferred Architecture documents and CVD guides offer prescriptive, end-to-end system solutions for Collaboration and Voice deployment. The design overviews provide a basic understanding of the products and their roles in the Preferred Architectures, including high-level best practices. The CVD guides provide more detailed design and deployment recommendations that help streamline the implementation of Preferred Architectures.

<http://www.cisco.com/go/pa>

- *Midmarket Collaboration CVD Guides*—Midmarket CVDs provide detailed design and step-by-step deployment information for collaboration solutions that are built on the Cisco Business Edition 6000/7000. These CVDs are based on the core recommendations of the Preferred Architectures, and in sometimes, they offer more solution designs as extensions or alternatives to the Preferred Architectures.

<http://www.cisco.com/go/pa>

- *Business Edition 6000/7000 Software Load Summary/Release Notes*—Preload Summary documents provide information on ISO and OVA files that are pre-loaded in your server's datastore.

<https://www.cisco.com/c/en/us/support/unified-communications/business-edition-6000/products-release-notes-list.html>

<https://www.cisco.com/c/en/us/support/unified-communications/business-edition-7000/products-release-notes-list.html>

Collect Required Network Information

Collect the following network settings for your installation:

- Subnet mask
- Gateway IP Address
- VMware vSphere ESXi IP address
- VMware vSphere ESXi management IP address
- Cisco Integrated Management Controller (CIMC) IP address
- UC application IP addresses
- DNS server IP address
- UC application hostnames
- (Optional) Domain name
- NTP server IP address
- Time zone
- (Optional) SMTP server

Decide how you will interconnect the appliance to your network. Specifics on network interconnection options are beyond the scope of this guide, but below are some important callouts.

Available physical ethernet ports depend on the appliance model:

- All M6 appliance models include modular LAN on motherboard ports as described in the *Cisco UCS C220/C240 M6 Rack Server (Small Form Factor Disk Drive Model) Spec Sheet*.
- BE7K M6 appliance models ship with quad port 10-Gigabit Ethernet network interface cards. It is not supported on any appliance model to add network interface cards, add virtual interface cards, or change included network interface card.

Set Up Your Appliance

Review the following topics before you begin your installation.

Installation of Virtualization and Application Software

This section describes the tasks that you must perform to install virtualization and application software on your Business Edition 6000 or 7000, using the factory preload.

Preloaded File Types in the Datastore

In addition to pre-deployed virtual machines, Cisco Business Edition appliances are shipped with selected Collaboration application software that is pre-loaded on the datastore. Following is a breakdown of the file types for application installs:

- **ISO Files**—An ISO file is a DVD image containing application install files (for example, `Bootable_UCSInstall_UCOS_12.5.1.10000-22.sgn.iso`).

An ISO file is present for a UC application only if the OVA file for that application does not include the application software.

- **OVA Files**—Each UC application has an associated Open Virtualization Archive (OVA) file, which is used to package and deploy the virtual machine. There are two types of OVAs for Business Edition servers:
 - Some OVAs (e.g. `cucm_12.5_vmv13_v1.0.ova`) are templates that define the VM, but do not include any application software. For those applications, there is an associated ISO file in the datastore (for example, `Bootable_UCSInstall_UCOS_12.5.1.10000-22.sgn.iso`). For the installation, you must deploy the OVA template and install the software using the associated ISO file.
 - Other OVA files define the VM and include the application software (for example, `Bootable-CiscoPagingServer_12.5.1.ova`). For these applications, there is no ISO file. You can deploy the VM and install the software using the OVA file.

For information on which ISO and OVA files are pre-loaded in your server's datastore, refer to the preload summary for your server at the <http://www.cisco.com/c/en/us/support/unified-communications/business-edition-6000/products-release-notes-list.html> or <https://www.cisco.com/c/en/us/support/unified-communications/business-edition-7000/products-release-notes-list.html>.



Note Cisco recommends that you archive the OVA-ISO directory locally. If there is a hardware failure, replacement hardware does not include a factory preload. If the factory preloaded software is either deleted, overwritten, or lost, then manual rebuild of preloaded software is required. Restore to the factory default capability is not supported.

Installation Task Flow of the Cisco Business Edition 6000/7000

Perform the following tasks to install software on your Cisco Business Edition 6000/7000 server.

Procedure

	Command or Action	Purpose
Step 1	Configure Cisco Integrated Management Controller, on page 4	Configure CIMC for your Business Edition 6000 server.
Step 2	Customize Virtualization Software Remote Access, on page 7 Customize Virtualization Software Remote Access	Configure the pre installed VMware vSphere ESXi software on the appliance.
Step 3	Delete Unused or Unwanted Virtual Machines, on page 11	Delete any pre deployed VMs that you do not require.

Configure Cisco Integrated Management Controller

Cisco Integrated Management Controller (CIMC) is the management interface for the Cisco UCS appliance. CIMC runs within the appliance, allowing remote administration, configuration, and monitoring of the appliance through web or SSH command-line access.

Complete the following tasks to configure CIMC on a Business Edition 6000 or 7000 appliance deployments.
Complete the following tasks to Configure Cisco Integrated Management Controller:

Procedure

	Command or Action	Purpose
Step 1	Power on and Initial CIMC Setup, on page 5	
Step 2	Complete the CIMC Configuration, on page 6	

Power on and Initial CIMC Setup

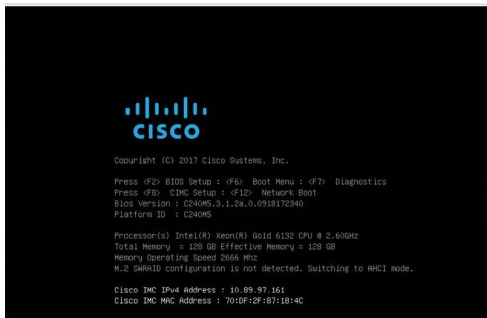
Use this procedure to power on the appliance and begin the basic Cisco Integrated Management controller (CIMC) configuration.

Before you begin

Ensure that the Business Edition 6000 or 7000 appliance has been rack-mounted, connected to a power supply, connected to the data network, and that a monitor and keyboard are connected to the appliance.

- Step 1** Verify that power is connected and that the power button LED is orange.
- Step 2** Push the appliance power button and verify that it changes to green.
- Step 3** Watch the boot process on the monitor.
- Step 4** When the blue Cisco logo appears, press **F8** to enter the CIMC configuration dialog. Appearance of this screen may vary with appliance model and firmware version.

Figure 1: Press F8 at the CIMC Boot Screen



- Step 5** When prompted, enter the username `admin` and create a new password.
- Step 6** On the CIMC configuration screen, complete the following details:
 - CIMC IP address
 - Subnet mask
 - Gateway IP address

Figure 2: Enter the CIMC IP Address Details

```

Cisco IMC Configuration Utility Version 2.0 Cisco Systems, Inc.
*****
NIC Properties
NIC mode                               NIC redundancy
Dedicated: [X]                         None: [X]
Shared LOM: [ ]                       Active-standby: [ ]
Cisco Card:                             Active-active: [ ]
  Riser1: [ ]                           VLAN (Advanced)
  Riser2: [ ]                           VLAN enabled: [ ]
  MLOm: [ ]                             VLAN ID: 1
Shared LOM Ext: [ ]                   Priority: 0
IP (Basic)
IPV4: [X]                               IPV6: [ ]
DHCP enabled [X]
CIMC IP: 203.0.113.98
Prefix/Subnet: 255.255.255.0
Gateway: 203.0.113.1
Pref DNS Server: 203.0.113.1
*****
<Up/Down>Selection <F10>Save <Space>Enable/Disable <F5>Refresh <ESC>Exit
<F1>Additional settings

```

Step 7 When complete, press **F10** to save your changes and boot the system.

Complete the CIMC Configuration

Use this procedure to configure DNS and NTP settings in the CIMC interface.

Before you begin

Power on the appliance and begin basic Cisco Integrated Management Controller(CIMC) configuration.

- Step 1** In a web browser, enter the CIMC IP address and log in with the username `admin` and the password that you created in the previous task.
- Step 2** From the left menu, select the **Admin** tab, and click **Network**.
- Step 3** In the home page, select the **Network Settings** tab.
- Step 4** From **Common Properties**, change the **Hostname** setting to the CIMC hostname.
- Step 5** From **IPv4 Properties**, change **Preferred DNS Server** to the IP address that you have specified for the DNS server.
- Step 6** In the home page, select the **NTP Settings** tab.
- Step 7** Check the **Enable NTP** check box.
- Step 8** In the **Server 1** field, enter the NTP server IP address.
- Step 9** Select **Save Changes** from the bottom right corner of the page.

Configure Virtualization Software

Complete the following tasks to set up the VMware vSphere ESXi:

Before you begin

Make sure you have obtained a license for VMware vSphere ESXi for your appliance. A license is required, but is not included with or factory preloaded on M6 appliances.

Procedure

	Command or Action	Purpose
Step 1	Customize VMware vSphere ESXi Remote Access.	
Step 2	Access and Configure the VMware vSphere ESXi.	

Customize Virtualization Software Remote Access

Follow this procedure to customize the VMware vSphere ESXi to enable remote access from your PC using the VMware Embedded Host Client.

Step 1

When the hypervisor boots, the ESXi Direct Console User Interface displays on the monitor as shown in the following figure "(appearance of this screen may vary by appliance model and preloaded software version)".

Figure 3: Console Screen After ESXi Loads

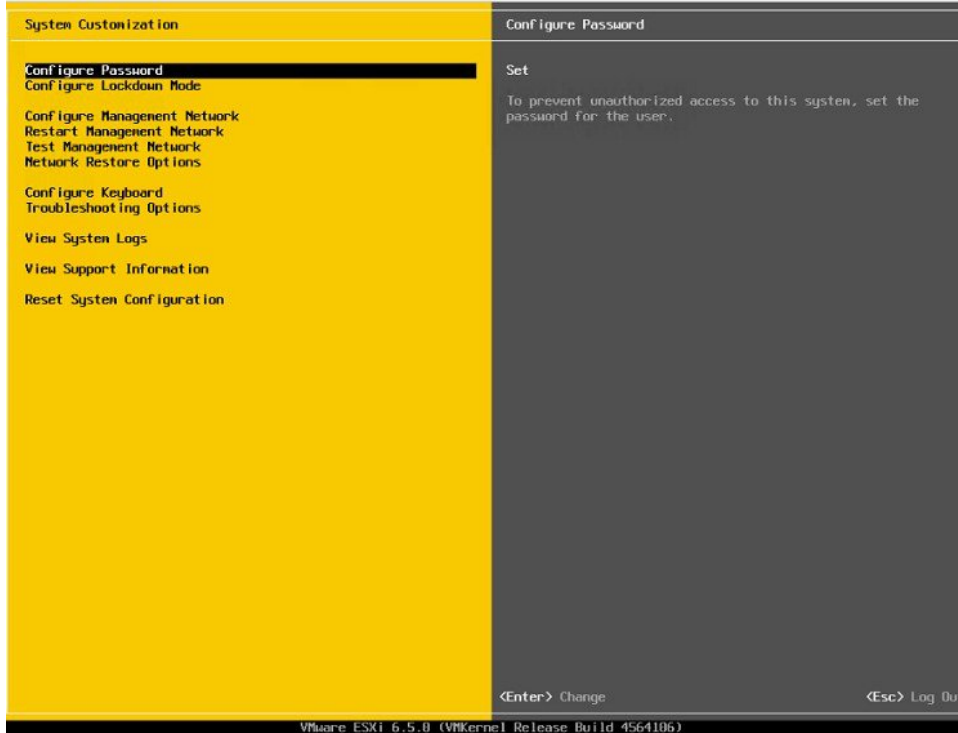


453855

Step 2 Press **F2** to enter the System Customization menu as shown in the following figure.

Figure 4: ESXi System Customization Menu

The default username is `root` and default password is `root`.

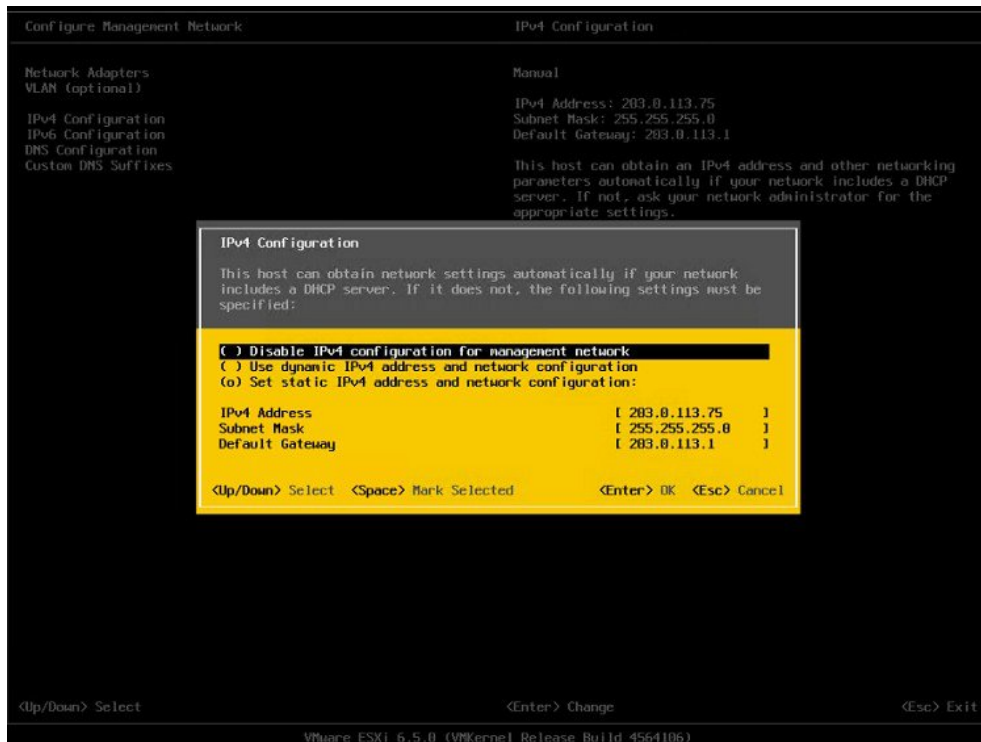


Step 3 After logging in, you must change the default password, choose **Configure Password** to change the password.

If your applications are pre-deployed, skip to [Step 5, on page 9](#).

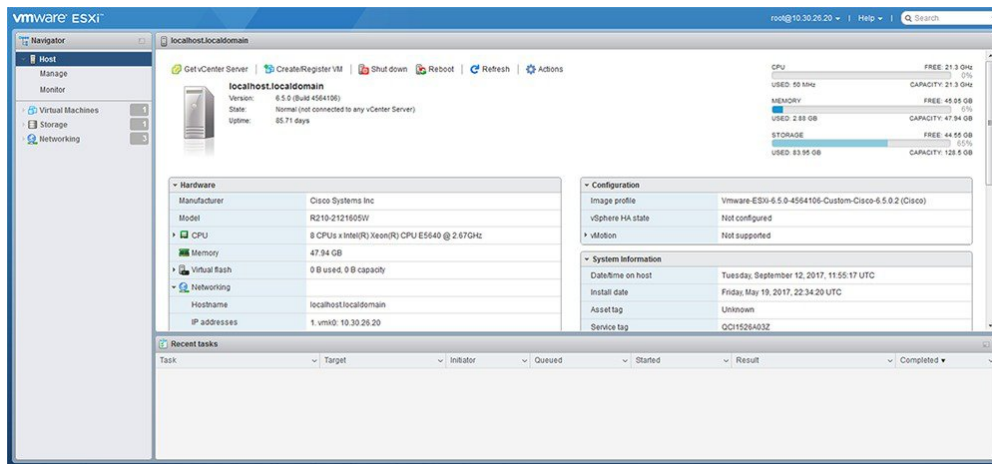
Step 4 To assign a static IP address, select the **Configure Management Network** menu, and follow the instructions on screen to change “IP Configuration”.

Figure 5: Assign Static IP Address to ESXi Host



Step 5 Connect your PC to the data network, and browse to the new hypervisor IP address.

Figure 6: Hypervisor Welcome Page



Access and Configure Virtualization Software

Some Business Edition applications require the host to have a valid time reference. Follow these steps to access the ESXi host to configure NTP and configure fault tolerance for network interface cards (NICs) using

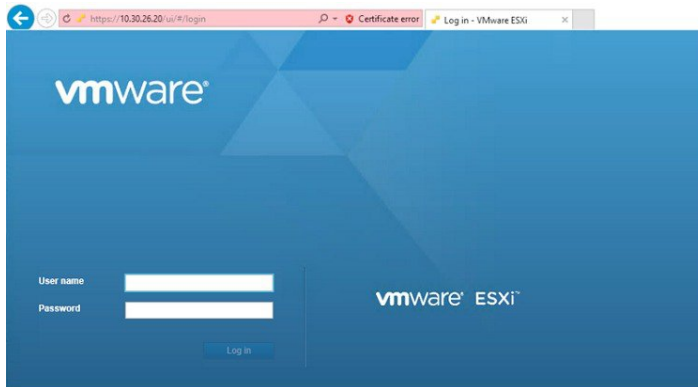
the NIC teaming feature, view preinstalled applications, and browse the datastore to verify the preloaded collaboration application software.

Before you begin

[Customize Virtualization Software Remote Access, on page 7](#)

Step 1 Browse to the “https://[ESXI-HOST-IP-Address]/ui/” to access VMware Embedded Host Client.

Figure 7: Access Virtualization Software Using VMware Embedded Host Client



Step 2 Use the login credentials that you previously configured.

Step 3 If selected at time of quoting, BE6000 and BE7000 appliances are factory loaded with *unlicensed* ESXi 7.0 U1 and vmfs6. A license for ESXi is required. This license is always sold separately from the M6 appliance and is not included with, sold with or factory loaded on M6 appliances. On power up ESXi will enter its time-limited evaluation mode. After expiry of evaluation mode, virtual machines will not be able to power up. If you want to re upload or version-upgrade this license, follow these steps:

- a) Locate your license document that has the license serial number you will use on the appliance.
- b) Navigate to **Manage > License > Assign License**.
- c) Type in or copy or paste the license serial number from the license document.
- d) Click **Check License** to validate the license key.

Step 4 Configure NTP settings:

- a) Navigate to **Manage > System > Time & date**.
- b) Click **Edit settings** to launch the **Edit time configuration** screen.
- c) Check **Manually configure the date and time on this host** check box.
- d) Update the Time.
- e) Check the **Use Network Time Protocol (enable NTP client)** check box.
- f) Select **Start and stop with host** from **NTP service startup policy** drop-down.
- g) Type the IP address of NTP server in **NTP servers**. If you want to add multiple NTP servers, type the IP address of NTP servers that are separated by commas.
- h) Click **Save**.

Step 5 (Optional) Configure fault tolerance by using the NIC teaming feature in VMware:

- a) Navigate to the **Networking > Management Network**.
- b) Click **Edit settings** to launch **Edit port group- Management Network**.
- c) In the Edit port group- Management Network screen, enter the name, VLANID, Virtual switch.

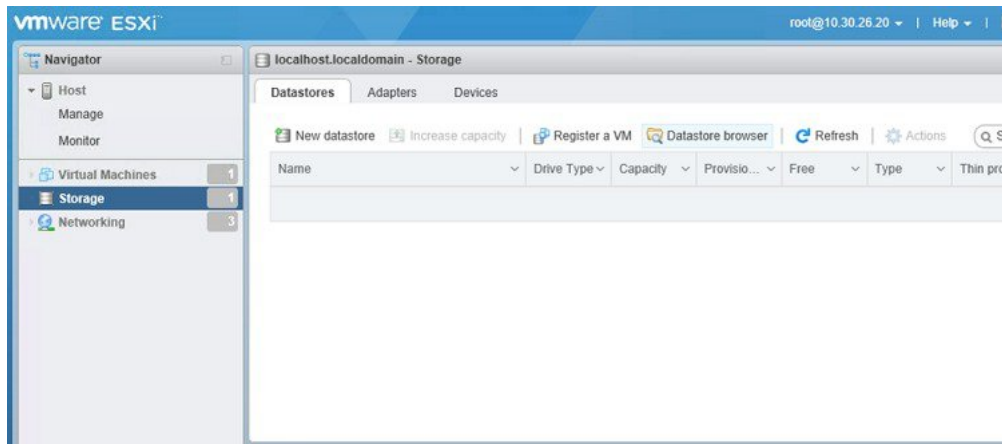
- d) Expand NIC teaming, enter the required details.
- e) Click **Save** to add the NIC that is connected to the data network.

Note By default, only one NIC is enabled for the hypervisor and identified as vmnic0.

Step 6 Browse the datastore:

- a) Navigate to **Storage > Datastore** to list the datastores in the Business Edition appliance.
- b) Select datastore1.
- c) Click the **Datastore browser**. You can view the Preloaded Collaboration Virtual Machines and preloaded software.

Figure 8: Browse Datastore to View Preloaded Collaboration Virtual Machines and Preloaded Software



Step 7 (Optional) Cisco recommends that you archive the OVA-ISO directory locally. If fails, the replacement hardware does not include preloaded content.

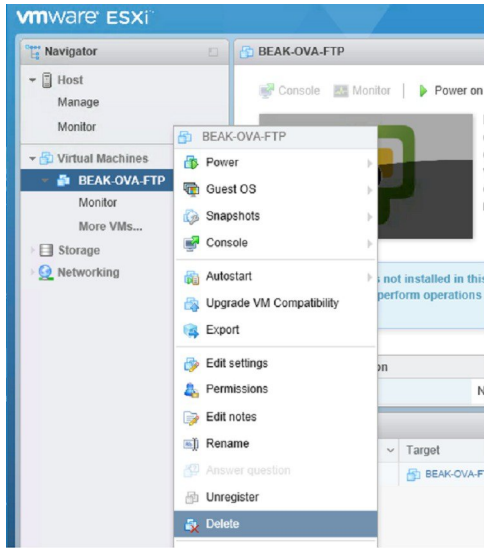
Delete Unused or Unwanted Virtual Machines

You can optionally delete unused or unwanted preloaded files to free up disk space or make room for subsequent installations in the following scenarios:

- If you want to deploy a new application version or patch level than the existing factory-preloaded application.
- If you do not want to run a particular preloaded application and its files.

Step 1 Log in to **VMware Embedded Host Client**.

Figure 9: Delete Any VMs That You Are Not Using



- Step 2** Expand **Virtual Machines** and locate the virtual machine that you want to delete.
- Step 3** If the VM has a green triangle, right-click the icon and select **Power > Power Off**. The green arrow disappears as the VM powers off.
- Step 4** Right-click the VM and select **Delete**.
- Step 5** Repeat this procedure for each virtual machine that you wish to remove.

Set Up Your Applications

Perform the following tasks to set up your applications on the Cisco Business Edition 6000/7000 appliance.

Procedure

	Command or Action	Purpose
Step 1	Deploy Virtual Machine OVAs, on page 13	Deploy virtual machine OVAs for each UC application that you want to install.
Step 2	Customize Virtual Machines for Cisco Unity Connection, on page 14	If your Business Edition 6000/7000 deployment includes Cisco Unity Connection, customize the Unity Connection VM.
Step 3	Associate Application ISO Files to Virtual Machines, on page 14	For UC application installations that require an ISO file, mount the ISO file on the application VM. Note For a list of applications that use ISO installation files, see the Pre-Load Summary for your appliance.

	Command or Action	Purpose
Step 4	Install UC Applications Using Touchless Installation, on page 15	<p>Optional. Use touchless installation to install any of the following core UC applications:</p> <ul style="list-style-type: none"> • Cisco Unified Communications Manager • IM and Presence Service • Cisco Unity Connection • Cisco Unified Contact Center Express <p>Note If you prefer, you can use manual installation for these applications.</p>
Step 5	Install UC Applications Manually, on page 19	Use the manual interactive process to install any remaining UC applications.

Deploy Virtual Machine OVAs

For each application that you want to run, requires one of the preloaded virtual machine OVA files. If a new version is preferred, then it is recommended to delete the existing version.

Depending on the preloaded application, the OVA contains any of the following applications:

- Fully installed ready to run application
- Partially installed application
- VM configuration alone for an empty virtual machine

For more details, see the Preload File Summaries in Release Notes at the <http://www.cisco.com/c/en/us/support/unified-communications/business-edition-6000/products-release-notes-list.html>.

<http://www.cisco.com/c/en/us/support/unified-communications/business-edition-7000/products-release-notes-list.html>



Note The base OVA template files that contain empty virtual machines are deployed in seconds, while larger OVA files that contain partially or fully installed applications can take longer to deploy.



Caution If you rebuild your appliance to use ESXi 6x, then ensure proper operation of your appliance and any embedded virtualization licenses, ensure it is running ESXi 7.0 U1 or greater, with the Cisco UCS-specific image of ESXi.

Step 1 On the VMware Embedded Host Client, navigate to the **Virtual Machines**.

Step 2 Right-click the **Virtual machines** and select the **Create/Register VM**.

Step 3 Select **Deploy a virtual machine from an OVF or OVA file** as select creation type.

- Step 4** Specify a meaningful name for the virtual machine.
- Step 5** Browse and select the source OVA template file on your PC. For application and filename mapping, see the Build Summary PDF in the datastore OVA-ISO directory, or download from here: <http://www.cisco.com/c/en/us/support/unified-communications/business-edition-6000/products-release-notes-list.html> or <http://www.cisco.com/c/en/us/support/unified-communications/business-edition-7000/products-release-notes-list.html>.
- Step 6** Select the datastore in which to store the configuration and disk files.
- Step 7** Select the deployment options.
- Step 8** If prompted to accept license agreements, continue to click **Next**.
- Step 9** Select the deployment options.
- Step 10** If prompted for the **Disk Format**, specify **Thick Provision Lazy Zero**.
- Step 11** Review your settings selection before finishing the wizard.
- Step 12** Click **Next**.
- Step 13** Deploy VMs for all your UC applications before proceeding to the next task.
- If your system includes Cisco Unity Connection, then *Customize Virtual Machines for Cisco Unity Connection*. Otherwise, *Associate Application ISO Files to Virtual Machines*.

Customize Virtual Machines for Cisco Unity Connection

For Customized installations, use this procedure to configure your Cisco Unity Connection virtual machine settings to ensure optimum performance.

Preconfigure

Before you begin

For Customized installations, use this procedure to configure your Cisco Unity Connection virtual machine settings to ensure optimum performance. [Deploy Virtual Machine OVAs, on page 13](#)

-
- Step 1** On VMware Embedded Host Client, navigate to the **Virtual Machines**.
- Step 2** Right click the **Unity Connection** entry and select **Edit Settings**.
- Step 3** If you want to use the Unity Connection, or Unified, or Integrated Messaging, do the following:
- Select the **Virtual Hardware** tab.
 - Select the **CPU** menu and set the number of **Cores per Sockets** to **2**.
 - In the **Reservation** tab, increase the reservation to **3598MHz**.

For more information, see the https://www.cisco.com/c/en/us/td/docs/voice_ip_comm/connection/12x/supported_platforms/b_12xcucspl.html.

Associate Application ISO Files to Virtual Machines

If you have deployed a skip-install OVA that contains any of the following partially installed applications, skip this step.

- Cisco Unified Communications Manager
- IM and Presence Service
- Cisco Unity Connection
- Cisco Unified Contact Center Express
- Cisco Emergency Responder

If you have deployed an OVA that contains ready to run fully installed applications, skip this step.

For all other OVA files that contain only VM configurations of empty virtual machines, use this procedure to associate the ISO installation files that is used to complete the installation.



Note For an up to date list of installation files for your appliance, see the *Preload Summary* for your appliance in the datastore OVA-ISO directory or at: <http://www.cisco.com/c/en/us/support/unified-communications/business-edition-6000/products-release-notes-list.html> .

-
- Step 1** In the VMware Embedded Host Client, select the UC application virtual machine.
 - Step 2** Click **Edit** .
 - Step 3** From **Virtual Hardware** tab, select **CD/DVD Drive 1**.
 - Step 4** Select **Datastore ISO File** from **CD/DVD Drive 1** drop-down list.
 - Step 5** **Browse** to the datastore and locate the application ISO file.
 - Step 6** Select the file and click **Select**.
 - Step 7** In **CD/DVD Drive 1**, check the **Connect at power on** check box under the **Status**.
 - Step 8** Repeat this procedure for each application that you want to install that includes an ISO file.
-

Install UC Applications Using Touchless Installation

Touchless installation allows you to install multiple UC applications and virtual machines of an application simultaneously, across the different hosts if necessary, without having to interact with the system while the install process runs. While you must prepare the system, touchless installation can save time, particularly if you want to install multiple applications. If you are installing only one or two applications, you may prefer to follow the manual procedure in the following section.

Use touchless installation to install the following applications:

- Cisco Unified Communications Manager
- IM and Presence Service
- Cisco Unity Connection
- Cisco Unified Contact Center Express
- Cisco Prime Collaboration Deployment

Procedure

	Command or Action	Purpose
Step 1	Generate Answer Files, on page 16	Generate answer files (AFG files) for UC applications.
Step 2	Create Virtual Floppy Images, on page 16	Use your AFG files to create virtual floppy images.
Step 3	Upload Virtual Floppy Images to Datastore, on page 17	Upload your virtual floppy images to the datastore.
Step 4	Mount Virtual Floppy on Virtual Machines and Set Boot Option, on page 17	Mount each virtual floppy on the corresponding UC application VM.
Step 5	Run Touchless Installation, on page 18	Run the touchless installation of your UC applications. We recommend that you run your installations simultaneously.

Generate Answer Files

Use this procedure to generate answer files for the touchless installation of your UC applications.



Tip We recommend that you create application-specific folders (for example, UCM, IMP, CUC, CCX) in which to save the generated files so that you do not get the files mixed up.

-
- Step 1** Go to the online answer file generator at: [www.cisco.com web cuc_afg](http://www.cisco.com/web/cuc_afg).
- Step 2** From the **Product** drop-down list, select the UC application for which you want to generate answer files.
- Step 3** Select the **Version** that you want to install.
- Step 4** Complete the remaining fields with the installation details that you want to configure on the appliance. For example, you can assign items such as passwords, IP addressing, and DNS settings.
- Step 5** Click **Generate Answer Files** to generate the `platformConfig.xml` file for that UC application. Each UC application generates a `platformConfig.xml` file. Cisco Unified Communications Manager also generates a `clusterConfig.xml` file.
- Step 6** Save the generated answer files as follows:
- For Cisco Unified Communications Manager, save both the `platformConfig.xml` and `clusterConfig.xml` files in the UCM folder.
 - For other UC applications, save the `platformConfig.xml` file in the relevant application folder.
- Step 7** Repeat these steps for each UC application for which you want to use touchless installation.
-

Create Virtual Floppy Images

Use this procedure to create virtual floppy images from the answer files. You will use the virtual floppy images in your touchless installation.



Tip We recommend that you follow the recommended naming conventions for your `.flp` files.

Before you begin

1. You can use Winimage to create the virtual floppy images. You can download Winimage from <http://www.winimage.com/download.htm>. You can also use other tools, such as BFI, to create virtual floppy images.
2. [Generate Answer Files, on page 16](#)

-
- Step 1** In Winimage, select **File > New**.
- Step 2** From the **Standard format**, select **1.44 MB** and click **OK**.
- Step 3** Drag the `platformConfig.xml` file for the UC application onto the Winimage window.
- Step 4** When prompted to inject the file into Winimage, click **Yes**.
- Step 5** Cisco Unified Communications Manager only. Drag the `clusterConfig.xml` file onto the Winimage window.
- Step 6** Select **File > Save As**.
- Step 7** Save the file as a virtual floppy image (.flp file) using the following naming conventions:
- Cisco Unified Communications Manager—`ucm.flp`
 - IM and Presence Service—`imp.flp`
 - Cisco Unity Connection—`cuc.flp`
 - Cisco Unified Contact Center Express—`ccx.flp`
- Step 8** Repeat this procedure for each UC application for which you want to use touchless installation.
-

Upload Virtual Floppy Images to Datastore

Use this procedure to upload the virtual floppy images to the datastore.

Before you begin

Create Virtual Floppy Images

-
- Step 1** Start the VMware Embedded Host Client.
- Step 2** Select **Storage**.
- Step 3** Right-click on a datastore and **Browse** the datastore.
- Step 4** Navigate to the destination directory and click the **Upload** icon.
- Step 5** Upload the vFloppy images to the AFG folder.
- Step 6** At the **Upload/Download** warning, click **Yes**.
- Step 7** Close the **Datastore Browser** window.
-

Mount Virtual Floppy on Virtual Machines and Set Boot Option

Use this procedure to mount the UC application virtual floppy images on their corresponding VM.



Note This step is not required for predeployed VMs as they are already configured.

Before you begin

Upload Virtual Floppy Images to Datastore

- Step 1** In the VMware Embedded Host Client, select the UC application virtual machine.
 - Step 2** Select **Virtual Machine**.
 - Step 3** Click **Edit**.
 - Step 4** From the **Virtual Hardware** tab, select **Floppy drive**.
 - Step 5** Select **Use existing floppy image**.
 - Step 6** **Browse** to the datastore and locate the virtual floppy image.
 - Step 7** Select the file and click **OK**.
 - Step 8** Under **Status**, enable the **Connect at power on** option.
 - Step 9** Click the **VM Options** tab. Under **Boot Options**, check the **Force BIOS setup**, and then click **Save**.
 - Step 10** Repeat this procedure for each UC application for which you want to perform touchless installation.
-

Run Touchless Installation

After you have mounted your virtual floppy drives to your application VMs, run the touchless installation process. We recommend that you run all of your touchless installations simultaneously.



Note If your VM is predeployed, you need to perform step 6 only.

- Step 1** In the VMware Embedded Host Client, right-click the VM and select the **Console > Open console in new window**. A console window opens.
 - Step 2** Click the **Power On** icon in the console toolbar to power on the virtual machine.
 - Step 3** When the BIOS screen appears, configure the following boot order:
 - a) CD-ROM
 - b) Hard Drive
 - c) Removable Devices
 - d) Network
 - Step 4** Save the settings and exit the console. The UC application installation commences immediately.
 - Step 5** Repeat these steps for each UC application that you want to install.
 - Step 6** Once the installations are complete, remove the vFloppy configurations from the virtual machines.
-

Install UC Applications Manually

Use this procedure to follow the interactive install process to install any UC applications that do not have a touchless install option such as Cisco Emergency Responder.

- Step 1** In the VMware Embedded Host Client, power on the VM for the application that you want to install.
- Step 2** Right-click the VM, and choose the **Console > Open console in new window**.
A console window appears.
- Step 3** Follow the screen prompts to install the application from the console.
- Step 4** If you are using the manual method to install both Cisco Unified Communications Manager and IM and Presence Service, once the Cisco Unified Communications Manager publisher node installation completes, do the following:
- From the VMware Embedded Host console, log in to the Cisco Unified Communications Manager CLI.
 - Run the `set network cluster subscriber dynamic-cluster-configuration 24` command.
 - Open a VMware Embedded Host console window for the IM and Presence or subscriber virtual machine.
 - Power On** the virtual machine.
 - Enter the configuration information for the application to complete the installation.
- Step 5** Repeat this procedure for each UC application that you want to install.
-

