

Send comments about documentation to mxe-doc@cisco.com.



Release Notes for Cisco Media Experience Engine 3000 Release 2.0

Revised: June 10, 2009, OL-17000-01

These release notes provide information about the features and caveats for Cisco Media Experience Engine 3000 (Cisco MXE 3000) Release 2.0.

- [Introduction, page 1](#)
- [Browser Requirements, page 2](#)
- [Installation and Upgrade Requirements, page 2](#)
- [Important Notes, page 3](#)
- [Caveats, page 4](#)
- [Troubleshooting, page 6](#)
- [Documentation Updates, page 6](#)
- [Related Documentation, page 23](#)
- [Documentation Feedback, page 23](#)

Introduction

Cisco MXE 3000 is an appliance that provides comprehensive transcoding services and integrates into the network to deliver the following media processing capabilities:

- Video content to be shared across the network to virtually any type of endpoint
- Innovative post production features that transform ordinary video content into studio quality output
- Collaboration with other applications delivered by Cisco's suite of media products

The Cisco MXE 3000 Resource Manager augments the capabilities of the Cisco MXE 3000 by intelligently load balancing job processing across multiple Cisco MXE 3000 devices and by delivering fault tolerance to a Cisco MXE 3000 deployment.



Americas Headquarters:
Cisco Systems, Inc., 170 West Tasman Drive, San Jose, CA 95134-1706 USA

[Send comments about documentation to mxe-doc@cisco.com.](mailto:mxe-doc@cisco.com)

Browser Requirements

You must use one of following web browsers to access the Folder Attendant UI or WebUI:

- Firefox 2
- Internet Explorer 6 or later



Note Firefox 3 is not supported.

For information about the Cisco MXE 3000 components and user interfaces, see the *User Guide for Cisco Media Experience Engine 3000* at the following URL:

http://www.cisco.com/en/US/products/ps9892/products_user_guide_list.html

Installation and Upgrade Requirements

The Cisco MXE 3000 is an appliance on which the Cisco MXE 3000 software comes preinstalled.

You can deploy Cisco MXE 3000 in the following two configurations:

- **Standalone Deployment**—This deployment consists of one or more Cisco MXE 3000s running as individual devices, each with its own license, user interfaces, job profiles, and so on. The following software product IDs (PIDs) support this deployment: MXE-3000-LIC (MXE 3000 SW)
- **Resource Manager Deployment**—This deployment consists of one or more Cisco MXE 3000 devices running as a single group with one set of user accounts, job profiles, licensed features, and user interfaces. There are two types of Cisco MXE 3000 devices in a Resource Manager deployment: a single Cisco MXE 3000 Resource Manager and up to nine Cisco MXE 3000 Resource Nodes. The Resource Manager not only functions as a multidevice manager that load balances transcoding jobs across the Resource Nodes, but also functions as a Resource Node that performs transcoding jobs. The following software PIDs support this deployment:
 - MXE-3000-RM-LIC (MXE 3000 Resource Manager License)
 - MXE-3000-RN-LIC (MXE 3000 Resource Node License)
 - MXE-3000-RM-LIC-U= (MXE 3000 Resource Manager License Upgrade)
 - MXE-3000-RN-LIC-U= (MXE 3000 Resource Node License Upgrade)

For details about obtaining a license file to enable the software for your deployment, see the *Deployment and Administration Guide for Cisco Media Experience Engine 3000*. This guide also provides information about installing a license, configuring the Cisco MXE 3000, upgrading from a standalone to a Resource Manager deployment, and troubleshooting deployments. You can access the guide at the following URL:

http://www.cisco.com/en/US/products/ps9892/prod_maintenance_guides_list.html



Note

Before you request a software license on Cisco.com for your deployment, see the *Deployment and Administration Guide for Cisco Media Experience Engine 3000* for licensing requirements.

Send comments about documentation to mx-e-doc@cisco.com.

Important Notes

Cisco.com Registration Website (Licenses)

- If you use Cisco MXE 3000 to access the Cisco.com registration website and request a license, you must press Enter to submit the Product Authorization Key to the website instead of clicking the Submit button.
- For Resource Manager deployments, you must use one MAC address to register the Resource Manager device; use the same Resource Manager MAC address to register each Resource Node; then, install the final license on the Resource Manager. See the *Deployment and Administration Guide for Cisco Media Experience Engine 3000* for details.

Standalone and Resource Manager Deployments

- Directories must be configured only as UNC paths to a network share for Cisco MXE 3000 Resource Manager deployments. Directory locations must be accessible to all Hosts.
- Directories can be configured as local paths or UNC paths for Cisco MXE 3000 standalone deployments. Directory locations must be accessible to all Hosts.

File Formats

- A maximum of 8 audio tracks is supported with QuickTime format.
- Re-wrapping is supported only for MPEG Encoder with an MPEG-PS input file.

Job Profiles

- Cisco MXE 3000 ships with preconfigured Job Profiles. A Job Profile is a template that defines how jobs are processed, and it contains the settings that are required to process jobs from beginning to end. Job Profiles are optimized for different types of input media, encoding output, and distribution, and they align with modern distribution devices, such as iPod, iTunes, Joost, and so on. See the “Standard Cisco MXE 3000 Job Profiles” section in the *User Guide for Cisco Media Experience Engine 3000* to learn more about the preconfigured Job Profiles.



Caution

We strongly recommend that you use the preconfigured Job Profiles and change settings only if you understand the consequences. Modifying preconfigured Job Profile settings or creating new Job Profiles with settings that media standards do not support can result in job processing failures or produce undesirable output.

User Interface

- The Live Capture feature is not supported; therefore, the Capture at setting that displays in the CLUI under Tools > Preferences > Audio Preferences is nonfunctional.
- The Grid Computing feature is not supported; therefore, the Grid Segments setting that displays in the WebUI under Administer > System is nonfunctional.
- Due to unexpected behavior of Quicktime software, opening the Video Settings dialog from the Quicktime Settings on a system running Quicktime 7.2 may result in a crash. As a workaround, complete the following steps:
 1. Open QuickTime preferences, and select the Advanced tab.
 2. In Video Settings, select Safe mode (GDI only), and click OK.

You can now open the QuickTime video settings dialog box from the QuickTime player.

Send comments about documentation to mxe-doc@cisco.com.

Caveats

This section includes the following topics:

- [Using the Bug Toolkit, page 4](#)
- [Open Caveats, page 4](#)

Using the Bug Toolkit

You can search for problems by using the Cisco Software Bug Toolkit. Known problems (bugs) are graded according to severity level.

Before You Begin

To access Bug Toolkit, you need the following:

- Internet connection
- Web browser
- Cisco.com user ID and password

Procedure

-
- Step 1** To access the Bug Toolkit, go to <http://tools.cisco.com/Support/BugToolKit/action.do?hdnAction=searchBugs>.
- Step 2** Sign in with your Cisco.com user ID and password.
- Step 3** To look for information about a specific problem, enter the bug ID number in the Search for Bug ID field, then click **Go**.



Tip For information about how to search for bugs, create saved searches, create bug groups, and so on, click **Help** on the Bug Toolkit page.

Open Caveats

[Table 1](#) describes possible unexpected behavior by Cisco MXE 3000 and includes severity 1, severity 2, and select severity 3 and 4 open caveats. The table is sorted by severity and then by identifier in alphanumeric order.

Because defect status continually changes, this table provides a snapshot of the defects that were open at the time of the release. For an updated list of open defects, access the Bug Toolkit. For details, see the [“Using the Bug Toolkit” section on page 4](#).

Send comments about documentation to mxe-doc@cisco.com.

Table 1 Open Caveats for Cisco MXE 3000

Identifier	Severity	Component	Headline
Standalone and Resource Manager Deployments			
CSCsu01450	3	cleui	Max thumbnail resolution height is 1200 though value >1200 is allowed
CSCsu07011	3	cleui	Possible job failure with QuickTime MasterStream set to Video or Audio
CSCsu07031	3	cleui	Possible MPEG job failure with AudioOnly and certain multiplex settings
CSCsu07131	3	cleui	Possible MPEG job failure with Layer 1 Audio Bit Rate= 64,96 or 112 kbps
CSCsu07142	3	cleui	Possible MPEG job failure for MPEG-2 stream when PCM Audio is selected
CSCsu08483	3	url_mxe	Cisco MXE 3000 allows currently logged in Administrative user to delete own user account
CSCsu08525	3	cleui	Job failure if ACELP.net is selected as Audio Codec in WM encoder
CSCsu08574	3	cleui	MPEG job failure when system header does not list included audio stream
CSCsu39092	3	cleui	Preprocessing preview does not show more than one simultaneous watermark
CSCsu68789	3	cleui	Internal ac3 decoder may fail to ingest certain files
CSCsu68825	3	cleui	Default Profile "CableLabs HD" fails due to incorrect video rate setting
Resource Manager Deployments			
CSCsy21569	3	url_mxe	Incorrect operation if TCP Host name or Temp directory path is invalid
CSCsy27687	3	url_mxeui	System Status Monitor may show truncated percentage of completion
CSCsy27850	3	url_mxeui	One must login as MXE-Service and not as Administrator to configure
CSCsy33308	4	url_mxe	No Validation done for values entered in Timeout and Queue Limit fields
CSCsy71762	3	cleui	If resource node goes down a second time, system administrator e-mail is not sent
CSCsy71774	3	cleui	When a job fails, User Interface does not show on which node it ran
CSCsz41802	3	url_mxeui_fa	Override System Settings does not work for Watch in Soft Single Node Mode

[Send comments about documentation to mxe-doc@cisco.com.](mailto:mxe-doc@cisco.com)

Troubleshooting

The following Cisco MXE 3000 documents provide troubleshooting information:

- The *Deployment and Administration Guide for Cisco Media Experience Engine 3000* provides troubleshooting information for WebUI and system-level issues.
- The *User Guide for Cisco Media Experience Engine 3000* provides troubleshooting information for the Client User Interface (CLUI) and Folder Attendant UI.
- The *Hardware Installation Guide for Cisco Media Experience Engine 3000* provides troubleshooting information for the appliance hardware.

To access these documents and the Cisco MXE 3000 documentation set, see the *Guide to Documentation for Cisco Media Experience Engine 3000* at the following URL:

http://www.cisco.com/en/US/products/ps9892/products_documentation_roadmaps_list.html

Documentation Updates

This section includes the following topics:

- [Updates for the CLUI Online Help, page 6](#)
- [Updates for the Folder Attendant Online Help, page 21](#)

Updates for the CLUI Online Help

The following changes apply to the CLUI online help in Release 2.0. You can access the latest Cisco MXE 3000 documentation on Cisco.com.

- [Standard Cisco MXE 3000 Job Profiles, page 7](#)
- [Understanding Real Encoder Settings: Encoder Properties, page 7](#)
- [Understanding Flash 8 Encoder Settings: Video, page 7](#)
- [E-mail Preferences, page 7](#)
- [Formats to Deliver, page 8](#)
- [Select Profiles, page 9](#)
- [File Job, page 10](#)
- [Creating a New Job Profile, page 12](#)
- [Creating a New Job Profile from an Existing Job Profile, page 13](#)
- [Editing an Existing Job Profile, page 13](#)
- [When to Add a Distribution Tab to a Job Profile, page 14](#)
- [Understanding H.264 Encoder Settings: Multiplexing, page 14](#)
- [Understanding Notification Settings, page 15](#)
- [Audio Preferences, page 18](#)
- [Indexing, page 18](#)

Send comments about documentation to mxe-doc@cisco.com.

Standard Cisco MXE 3000 Job Profiles

This section now includes information for 55 standard Job Profiles, as opposed to the 20 that are documented in the online help. See the *User Guide for Cisco Media Experience Engine 3000* on Cisco.com for more information.

Understanding Real Encoder Settings: Encoder Properties

The description for the Max. Keyframe Spacing setting in the Real Encoder: Encoder Properties Settings, Descriptions, and Values table now states:

Setting	Description and Value
Max. Keyframe Spacing	<p>Defines the maximum time allowed between keyframes. If the interval passes without a keyframe detected, a new keyframe will be created. Values are expressed in number of seconds between keyframes. Added keyframes will be in addition to natural keyframes, and may not be added if natural keyframes occur at sufficient frequency. <i>Acceptable values are 1 to 200 seconds</i> with 8 as the default value.</p> <p>Note <i>Setting this value to 0 will cause the job to fail.</i></p> <p>Keyframes are frames that contain all of the information about the image without relying on previous or subsequent frames to build the image. Increasing the number of keyframes in the encoded output can increase the quality of the clip. Because keyframes contain more data, increasing the frequency of keyframes can also increase file size.</p>

Understanding Flash 8 Encoder Settings: Video

The description for the Keyframe Interval in the Flash 8 Encoder: Video Settings and Descriptions table now states:

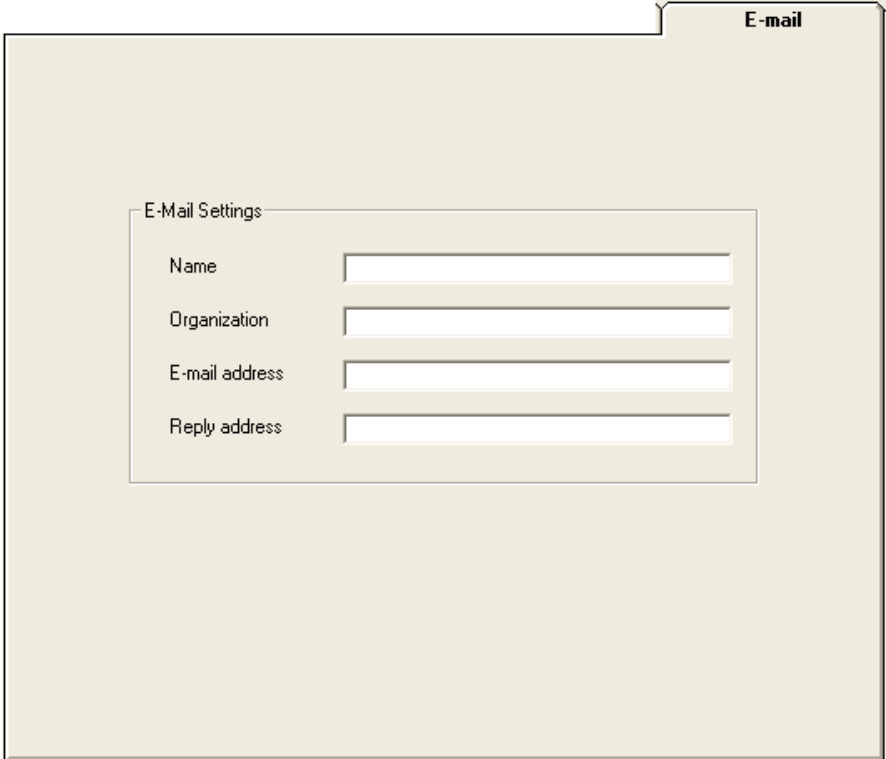
Setting	Description and Value
Max Keyframe Interval	<p>Sets the fixed time intervals at which keyframes will be generated in the output media. The Enabled box in the Auto-Keyframes section below must be checked for the Keyframe Interval to apply.</p> <p>Note <i>Setting this value to 0 will cause the job to fail.</i></p>

E-mail Preferences

The E-mail tab, shown in [Figure 1](#), is accessed from the main menu by selecting **Tools > Preferences > E-mail Preferences**. *At this time, the E-mail tab is used to enter information that appears in the job submission metadata only.*

Send comments about documentation to mxe-doc@cisco.com.

Figure 1 E-mail Preferences Tab



The image shows a screenshot of a web interface for E-mail Preferences. The main window has a title bar labeled "E-mail". Inside, there is a section titled "E-Mail Settings" which contains four text input fields:

- Name
- Organization
- E-mail address
- Reply address

The number 271946 is printed vertically on the right side of the window.

Formats to Deliver



Note

You may choose to deliver one or more formats or one or more particular profiles.

Select file types to be delivered to the location defined in the Delivery Method section.

Checking a particular format type will specify that all the encodes for that encoder will be delivered. Unchecked formats are not delivered.

Send comments about documentation to mxe-doc@cisco.com.

Figure 2 Delivery Tab: Formats to Deliver

Formats to Deliver

H.264

MPEG

QuickTime

Real

Thumbnails

WAV

Windows Media

Flash 8

MP3

271996

Select Profiles

In addition to checking one or more format boxes, check the Select Profiles box, shown in [Figure 3](#), to specify a distribution method limited to certain profiles within the encoder types.

Checking this box allows profiles to be picked from the adjacent list.

Figure 3 Delivery Tab: Select Profiles Checkbox

Formats to Deliver

H.264

MPEG

QuickTime

Real

Thumbnails

WAV

Windows Media

Flash 8

MP3

Select Profiles

3GPP SubQCIF H263 AAC. 3GPP SubQCIF H263 AAC.qt.awp

188933

The Select Profiles box lists the profiles used in the current job. Select only the profiles for which you want to set delivery.

Click on a profile name to select it (or select multiple profiles using the Shift or Ctrl keys). The encoded files generated from the selected profiles are then subject to the delivery method specified on this tab.

If the Select Profiles box is not checked, individual profiles cannot be selected and are grayed out.

Send comments about documentation to mxe-doc@cisco.com.

**Note**

To deliver to individual profiles, you must check at least one Format to Deliver, you must check the Select Profiles box, and you must highlight the chosen profile(s).

File Job

The File Job section, shown in [Figure 4](#), is used to select the file or files to be encoded and to set other job parameters, including whether the file needs to be copied to the server before preprocessing and encoding begins, the output name, thumbnail time, and start timecode.

**Note**

To avoid possible job failures, always check the Copy file to server box.

Figure 4 File Job Section

File Job

Select File Set

C:\media\Documentation Example.mov
 C:\media\00ABC\IndyRacing.mov
 C:\media\Bridge2.mov
 C:\media\Bridge.mov

Copy file to server Remove file from server when finished

Output name

Thumbnail Time Start Timecode

272000

[Table 2](#) describes the settings.

Table 2 File Job Settings and Descriptions

Setting	Description
Select File Set	<p>Click the Select File Set button to select the files that will be processed in the current job. Clicking the button opens a Locate movie files browse window where you can search for and select files.</p> <p>The selected files will appear in the box below the button.</p> <ul style="list-style-type: none"> To add more files: Select the button again. To remove a file: Select the file, and press the Delete button on your keyboard
Copy file to server	<p>Check this box to copy a file from the source directory to a media directory on the encoder server before the job begins. <i>We recommend that you always check this box.</i></p>

Send comments about documentation to mxe-doc@cisco.com.

Table 2 **File Job Settings and Descriptions**

Setting	Description
Remove file from server when finished	<p>Check this box to delete the new copy of the file from the Cisco MXE 3000 when the job is finished, which is recommended due to the typical size of media files.</p> <p>Note The Remove file from server when finished checkbox only works if Copy file to server is also checked.</p>
Output name	Enter an output name that the Cisco MXE 3000 will use to build the encoded output file name. If no output name is specified, the input file name will be used as the output name.
Thumbnail Time	Enter a time (00:00:00.00) at which the Cisco MXE 3000 will capture a single thumbnail image.
Start Timecode	<p>Enter the timecode that will appear on the first encoded frame. You can match the source file timecode or start the timecode at 00:00.</p> <p>Note This timecode entry does not affect the start or stop time of the encoding, nor does it trim the input source in any way. To trim the source file, go to View > Preview Window.</p>

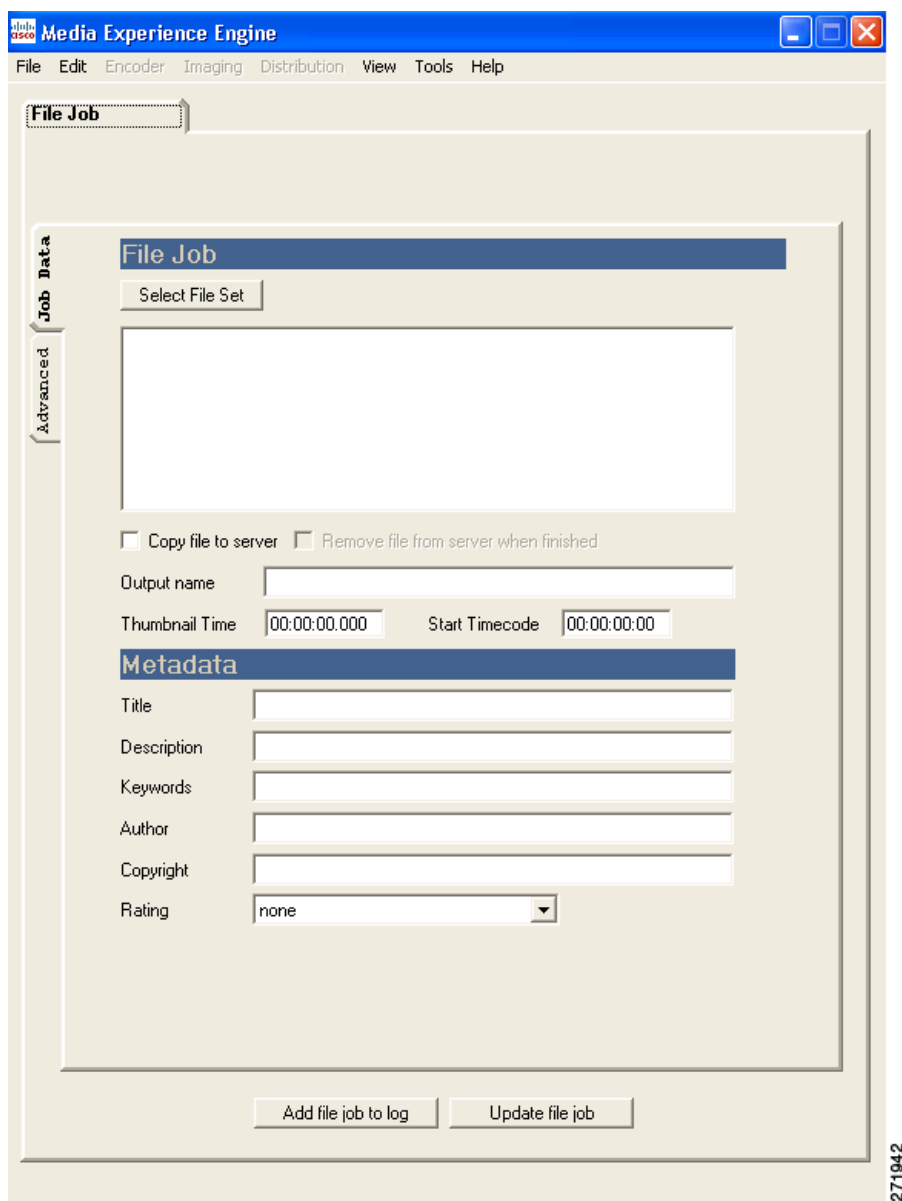
Send comments about documentation to mxe-doc@cisco.com.

Creating a New Job Profile

Procedure

- Step 1** Log into the CLUI. The main window displays, as shown in [Figure 5](#).

Figure 5 Cisco MXE 3000 Main Window



- Step 2** On the main menu, click **File > New Job Profile**. The Cisco MXE 3000 adds a Preprocessor tab.
- Step 3** Adjust Preprocessor settings as needed. See also: [Adding Preprocessor Settings to a Job Profile \(CLUI\)](#).
- Step 4** From the main menu, click **Encoder**, and add at least one encoder to the Job Profile. See also: [Adding Encoders to a Job Profile \(CLUI\)](#).

Send comments about documentation to mxe-doc@cisco.com.

- Step 5** (Optional) From the main menu, click **Distribution**, and add one or more Distribution tabs to the Job Profile. See also: Adding Distribution Settings to a Job Profile (CLUI).
- Step 6** From the main menu, click **File > Save Job Profile**.
- Step 7** Name the profile, and click **OK**.



Note Do not begin the Job Profile name with a space, and limit the complete length of the file name, including the full path to 256 characters.

Creating a New Job Profile from an Existing Job Profile

Use this procedure to create a new master profile with all the settings of the existing profile and to link the two profiles so that changes to one are reflected in both profiles. The link between the profiles is indicated by the parenthesis on the type tab in the Main Window, for example MPEG (Joost).



Tip To remove the link between the profiles, rename the tab by right-clicking the type tab and clicking Change Tab Name.

Procedure

- Step 1** Log into the CLUI.
- Step 2** On the main menu, click **File > Open Job Profile**. A browse window will open to the default profile location set in General Preferences.
- Step 3** Double-click a Job Profile (similar to the one you want to create) to open it.
- Step 4** Make any necessary changes to the various tabs in the Job Profile.
- Step 5** Click **File > Save Job Profile As**, and provide a new name for the new Job Profile.



Note Do not begin the Job Profile name with a space, and limit the complete length of the file name including the full path to 256 characters.

Editing an Existing Job Profile

Jobs in the Job Log window (unsubmitted jobs) that use a particular profile will be affected by any changes to that profile. Jobs in the Job Status window (submitted jobs) will not be affected. See also: Job Log Window: Managing Jobs Before Submission and Job Status Window: Managing Submitted Jobs.

Procedure

- Step 1** From the main menu, click **File > Open Job Profile**. If a Job Profile is currently open, you will be asked if you want to save the current profile.
- Step 2** Click **Yes** or **No**. A browser window will open to the default profile location set in General Preferences.

Send comments about documentation to mxe-doc@cisco.com.

- Step 3** Double-click a profile name to open it.
- Step 4** Make any necessary changes to the various tabs in the profile.
- Step 5** Click **File > Save Job Profile**.

or

Click **Save Job Profile As** to save the updated Job Profile under a new name without changing the original file. *See also: Creating a New Job Profile from an Existing Job Profile for information about linked profiles.*



Note Do not begin the Job Profile name with a space, and limit the complete length of the file name, including the full path to 256 characters.

When to Add a Distribution Tab to a Job Profile

Distribution tabs allow users and administrators to save encoded output according to their specific business needs in addition to or instead of the default location.

Distribution tabs are not a required component of Job Profiles. By default, output files will be saved to the system default locations. When any type of distribution tab is added to a job or Job Profile, the system default will be overridden. *When any type of distribution tab is added to a job or Job Profile, the output file is sent to the location specified on the distribution tab in addition to the default distribution location.*

Likewise, distribution tabs are used to automate portions of the encoding workflow. For example, if encoded clips must be reviewed before they are moved to a streaming server, you can add a Delivery tab to automatically send the media to the reviewer's server using FTP, eliminating the need to manually FTP files. Or, if encoding files for an external customer, you can use the Notification tab to automatically post job statuses (via HTTP Post or e-mail) to a site for client reference.

Understanding H.264 Encoder Settings: Multiplexing

Figure 6 shows the Multiplexing tab.

Figure 6 H.264 Encoder: Multiplexing Tab



[Send comments about documentation to mxe-doc@cisco.com.](mailto:mxe-doc@cisco.com)

Table 3 describes the settings.

Table 3 H.264 Encoder: Multiplexing Settings and Descriptions

Setting	Description
Stream	<p>Specifies what type of multiplexing will be performed.</p> <ul style="list-style-type: none"> • <i>mpeg1</i>: System stream multiplexing is enabled. • <i>mpeg2</i>: Program stream multiplexing is enabled. Valid audio input is AAC, Layer 1, or Layer 2 audio. • <i>videocd</i>: Constrained multiplexing that satisfies the requirements for Video CD production. • <i>vcd-padded</i>: Constrained multiplexing that satisfies the requirements for padded Video CD production. • <i>svcd</i>: Constrained multiplexing that satisfies the requirements for Super Video CD production. • <i>dvd</i>: Constrained multiplexing that satisfies the requirements for DVD production. • <i>transport</i>: Multiplexing into a transport. Valid audio input is AAC, Layer 1, or Layer 2 audio. • <i>external</i>: Multiplexing into a transport stream using the Manzanita multiplexer. This is suitable for cable transmission and other applications that require transport streams. Valid audio input is AAC, AC3, Layer 1, or Layer 2 audio. A configuration file to control the Manzanita multiplexer is required. • <i>none</i>: No multiplexing is performed. This is suitable for DVD authoring systems that require separate video and audio files.
Config File	<p>Specifies the Manzanita configuration file used for external transport stream multiplexing. This option is available only if the external stream multiplexing type is selected.</p>

Understanding Notification Settings

Each Notification tab is made up of five sections used to define when and how notification will take place.

- [Send Notification, page 15](#)
- [E-mail, page 16](#)
- [HTTP Post, page 16](#)
- [TCP Post, page 17](#)
- [UDP Post, page 17](#)

Send Notification

Select the status at which a notification is sent.

- Always
- On Success

Send comments about documentation to mxe-doc@cisco.com.

- On Failure



Note

Failed jobs are jobs that fail at any point in the process and include jobs stopped by a user.

E-mail

Check this box, shown in [Figure 7](#), to enable e-mail notification. Notifications are forwarded to the server name previously configured at the time of your system deployment. The server must be running the Simple Mail Transport Protocol (SMTP) service to process the e-mail transmission.

Figure 7 Notification Tab: Email

From and To Options

- **Address:** uses an e-mail address supplied in the From Address field
- **System Administrator:** uses the System Administrator e-mail address stored in the Cisco MXE 3000 database.



Note

The To Address can be any type of account capable of receiving text messages from an SMTP server, regular e-mail addresses, pagers, and text-enabled cellular phones.

HTTP Post

Check this box, shown in [Figure 8](#), to define parameters used to post notification messages to web servers using HTTP Post.

Figure 8 Notification Tab: HTTP Post

HTTP Post Fields

- **Server Name:** Enter the host name of the web server to which HTTP notification messages will be posted. This is a required field.
- **Port:** Enter the TCP port used for HTTP communication with the web server specified. If no value is specified the default port, port 80, will be used.

Send comments about documentation to mxe-doc@cisco.com.

- **CGI Path:** Enter the path of the Common Gateway Interface (CGI) script used for HTTP notification. The path does not include the server name, which is supplied in the HTTP Server name field above, but does include the file name of the script being called.

TCP Post

Check this box, shown in [Figure 9](#), to enable Transmission Control Protocol (TCP) post notifications.

Figure 9 Notification Tab: TCP Post

TCP Post
 Server Name
 Port

TCP Post Fields

- **Server Name:** Enter the name of a destination server for the notification. This is a required field.
- **Port:** Enter the destination server's TCP port number. If no value is specified the default port, port 80, will be used.

UDP Post

Check this box, shown in [Figure 10](#), to enable User Datagram Protocol (UDP) post notifications.

Figure 10 Notification Tab: UDP Post

UDP Post
 Server Name
 Port

UDP Post Fields

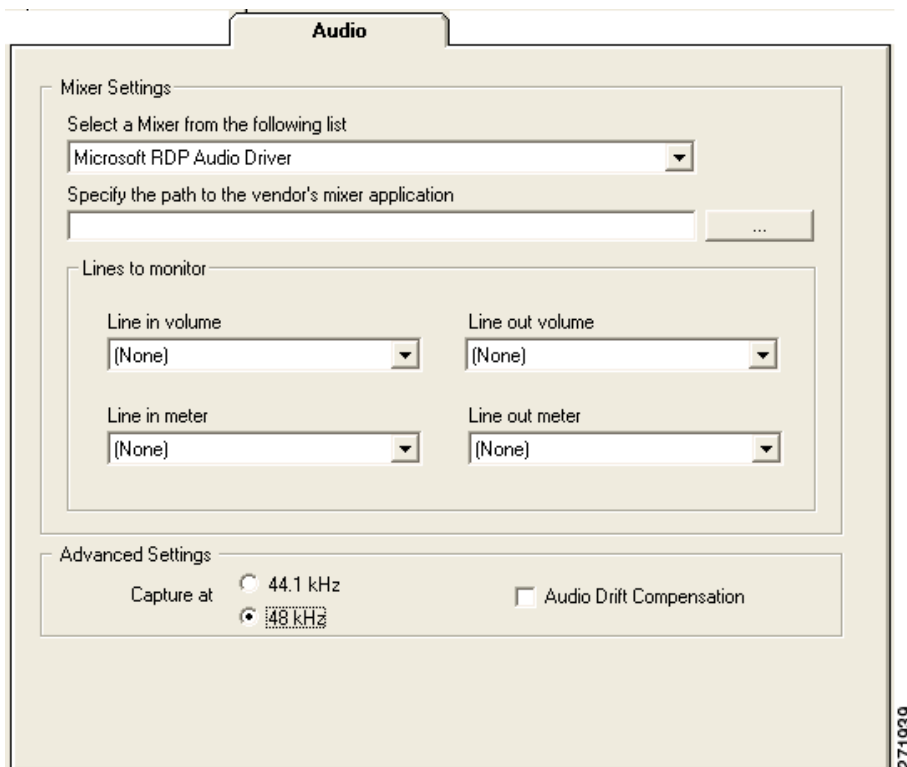
- **Server Name:** Enter the name of a destination server for the notification. This is a required field.
- **Port:** Enter the destination server's TCP port number. If no value is specified the default port, port 80, will be used.

[Send comments about documentation to mxe-doc@cisco.com.](mailto:mxe-doc@cisco.com)

Audio Preferences

The Audio tab, shown in [Figure 11](#), is accessed from the main menu by selecting **Tools > Preferences > Audio Preferences** and is used to set audio mixer preferences (or defaults).

Figure 11 Audio Preferences Tab



[Table 4](#) describes the settings.

Table 4 Audio Preferences Settings and Descriptions

Setting	Description
Select a Mixer . . .	Choose this option to identify which of the installed mixers the Cisco MXE 3000 will use.
Specify the path . . .	Choose this option to define the full path of the mixer software.
Capture at	<i>These settings do not apply to Cisco MXE 3000 in Release 2.0.</i>
Audio Drift Compensation	<i>These settings do not apply to Cisco MXE 3000 in Release 2.0.</i>

Indexing

This section includes the following topics:

- [Introduction to the Indexing Tab, page 19](#)
- [Understanding Indexing Settings, page 19](#)
- [Adding an Indexing Tab to a Profile, page 20](#)

Send comments about documentation to mxe-doc@cisco.com.

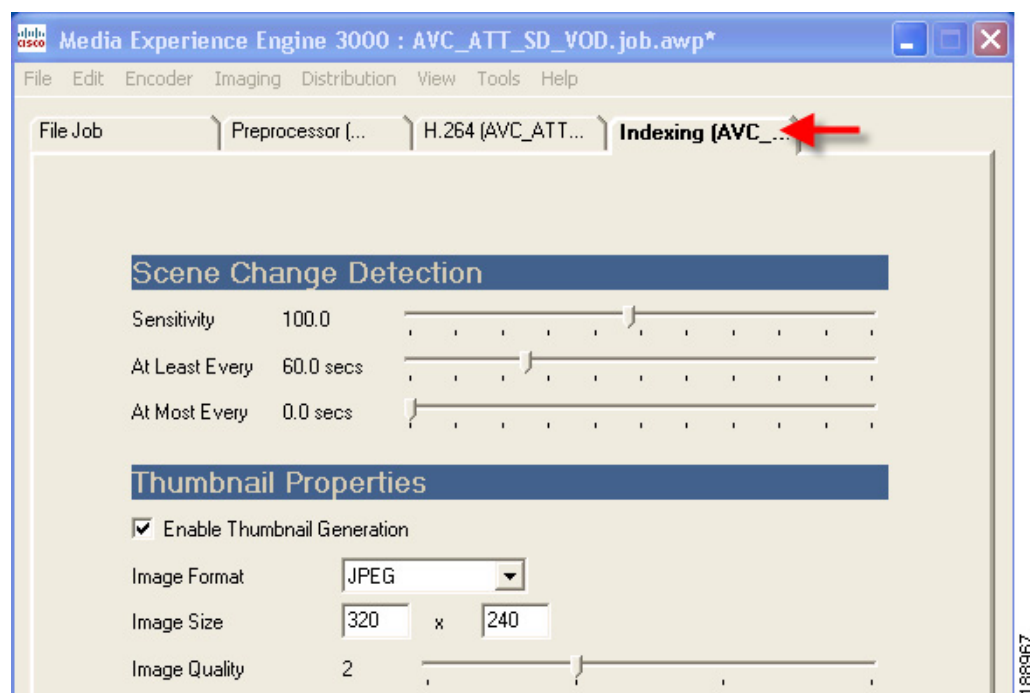
Introduction to the Indexing Tab

Indexing tabs, shown in [Figure 12](#), are added to a job or a job profile from the main menu, by selecting **Imaging > Add Indexing**. Adding indexing settings to a job or Job Profile is optional.

The Indexing tab is used to define parameters that specify how to perform scene change detection, whether to capture thumbnail images as representative samples of the scene changes, as well as the format, size, and quality of the thumbnail image(s). See also: [Introduction to the Thumbnails Tab](#).

See also: [Understanding Indexing Settings](#), page 19, for a description of each of the settings.

Figure 12 **Indexing Tab**



Understanding Indexing Settings

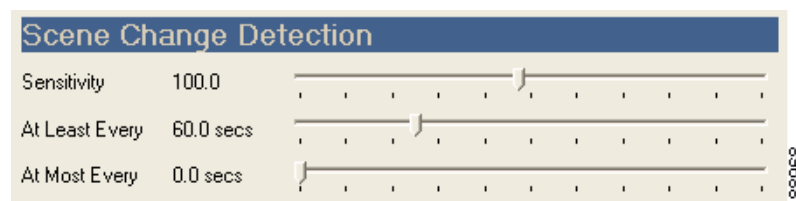
The Indexing tab is made up of the following two sections:

- [Scene Change Detection](#), page 19
- [Thumbnail Properties](#), page 20

Scene Change Detection

[Figure 13](#) shows the Scene Change Detection section.

Figure 13 **Indexing Tab: Scene Change Detection Section**



Send comments about documentation to mxe-doc@cisco.com.

Table 5 describes the settings.

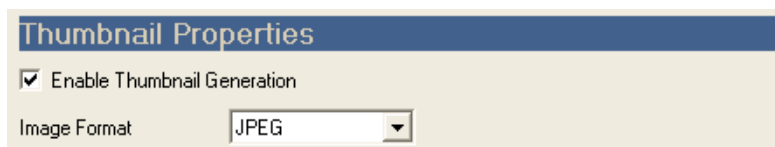
Table 5 Scene Change Detection Settings and Descriptions

Setting	Description
Sensitivity	This slider controls the sensitivity to changes in the video program that will cause a scene change to be declared. A higher sensitivity setting will generate more scene changes; a lower sensitivity setting will generate fewer scene changes. Acceptable values range from 10 to 200, with 100 as the default. By clicking on the sensitivity number, higher sensitivities (up to 1000) can be entered manually.
At Least Every	Specifies a maximum time interval, in seconds, between scene changes. If a scene change is detected before the end of this interval, the time is reset. The default value is 60 seconds and can be reset using the slider. By clicking on the displayed value, you may enter specific periods (1.0 to 72000.0 seconds) manually.
At Most Every	Specifies a minimum time interval, in seconds, between scene changes. If a scene change is detected before the end of this interval, the time is reset. Until the period, measured from the time of the last scene-change expires, no new scene change will be declared. This period is zero by default, meaning that there is no limit to how quickly scene changes can be declared (every frame). By clicking on the displayed value, specific periods can be entered manually. Note The At Most Every value must be less than or equal to the At Least Every value.

Thumbnail Properties

Figure 14 shows the Thumbnail Properties section.

Figure 14 Indexing Tab: Thumbnail Properties Section



See also: Understanding Thumbnail Settings for a description of each field.

Adding an Indexing Tab to a Profile

Procedure

- Step 1** From the main menu, click **File** and **New Job Profile** or **Open Job Profile**.
- Step 2** From the main menu, click **Imaging > Add Indexing**. An Indexing tab is added to the job.
- Step 3** Complete the Scene Change Detection and Thumbnail Properties sections. See also: [Understanding Indexing Settings, page 19](#), and Understanding Thumbnail Settings.
- Step 4** Click **File > Save Job Profile** to save changes.

Send comments about documentation to mxe-doc@cisco.com.

Updates for the Folder Attendant Online Help

The following changes apply to the Folder Attendant online help in Release 2.0. You can access the latest Cisco MXE 3000 documentation on Cisco.com.

- [Filtering Jobs, page 21](#)
- [Override System Settings, page 23](#)

Filtering Jobs

The Filter button on the Job Status Monitor page allows you to display a subset of all the jobs. Filter jobs using any of the following parameters (or any combination of these parameters):

- Job ID
- Job Profile Name
- Title
- Author
- Submit Time
- Priority
- Status



Note

Even if jobs are filtered, they are still being processed as usual. This function only limits the number of jobs displayed on the page.

Procedure

- Step 1** Access the Job Status Monitor page, shown in [Figure 15](#).

Figure 15 *Jobs Before Filters Have Been Applied*

Job ID	Job Profile Name	Title	Author	Submit Time	Priority	Status
13	YouTube	CheeziPuffs.mov	admin	2008/07/17 13:37:09	2	Running
12	YouTube	Sample.mov	admin	2008/07/17 13:37:09	2	Completed

- Step 2** Select the Filter button from the menu bar. The Job Status Filter pop-up, shown in [Figure 16](#), displays.

Send comments about documentation to mxe-doc@cisco.com.

Figure 16 Job Status Filter Pop-Up

- Step 3** Complete one or more fields to specify how to filter the job status display, as described in [Table 6](#). For example, if you enter All Streaming in the Job Profile Name field, that means that only the jobs that have the All Streaming Job Profile are displayed.

Table 6 Directory Filter Field

Field	Description
Job ID	Enter the unique numerical Job ID for the job to be displayed.
Job Profile Name	Enter the name of the Job Profile for the job(s) to be displayed.
Title	Enter the title of the job to be displayed.
Priority	Enter a numerical priority (between 1 and 100). If the priority for the selected job matches this priority, the job will be displayed.
Author	Enter the author of the job(s) to be displayed.
Status	Select the status of the job(s) to be displayed from the drop-down menu.
From Date	Click the calendar icon to select the first date of jobs to be displayed. Note When filtering by date, you must enter a From Time and a To Time. Otherwise, these fields will default to 00:00:00, and no results will display.
From Time	Enter the start time in hh:mm:ss.
To Date	Click the calendar icon to select the last date of jobs to be displayed.
To Time	Enter the end time in hh:mm:ss.

- Step 4** When you have completed the desired fields, click **Set Filter**. The Job Status Monitor page is updated and displays only jobs matching the filter fields.

Send comments about documentation to mxe-doc@cisco.com.

Override System Settings

In the Folder Attendant, when you add a Watch to a Directory, one can opt to override the default system settings per watch for where the output files will be delivered. There are two listings for Quicktime.

One is called QuickTime Output Directory and the other is called QuickTime Temp Directory.

- The QuickTime Output Directory is where the files that were transcoded to a QuickTime format will be delivered.
- The QuickTime Temp Directory is a directory that the QuickTime Encoder uses for internal processing of its files before it finalizes them.

Related Documentation

For a complete list of Cisco MXE 3000 documentation, see the *Guide to Documentation for Cisco Media Experience Engine 3000* at the following URL:

http://www.cisco.com/en/US/products/ps9892/products_documentation_roadmaps_list.html

Documentation Feedback

To provide feedback on this Cisco MXE 3000 document, or to report an error or omission, you can use the online, Embedded Feedback form that appears on the left side of the screen at the following URL:

http://www.cisco.com/en/US/docs/video/mxe/2_x/release/notes/mxe20rn.html

Alternatively, you can send feedback to mxe-doc@cisco.com.

CCDE, CCENT, CCSI, Cisco Eos, Cisco HealthPresence, Cisco IronPort, the Cisco logo, Cisco Lumin, Cisco Nexus, Cisco Nurse Connect, Cisco StackPower, Cisco StadiumVision, Cisco TelePresence, Cisco Unified Computing System, Cisco WebEx, DCE, Flip Channels, Flip for Good, Flip Mino, Flip Video, Flip Video (Design), Flipshare (Design), Flip Ultra, and Welcome to the Human Network are trademarks; Changing the Way We Work, Live, Play, and Learn, Cisco Store, and Flip Gift Card are service marks; and Access Registrar, Aironet, AsyncOS, Bringing the Meeting To You, Catalyst, CCDA, CCDP, CCIE, CCIP, CCNA, CCNP, CCSP, CCVP, Cisco, the Cisco Certified Internetwork Expert logo, Cisco IOS, Cisco Press, Cisco Systems, Cisco Systems Capital, the Cisco Systems logo, Cisco Unity, Collaboration Without Limitation, EtherFast, EtherSwitch, Event Center, Fast Step, Follow Me Browsing, FormShare, GigaDrive, HomeLink, Internet Quotient, IOS, iPhone, iQuick Study, IronPort, the IronPort logo, LightStream, Linksys, MediaTone, MeetingPlace, MeetingPlace Chime Sound, MGX, Networkers, Networking Academy, Network Registrar, PCNow, PIX, PowerPanels, ProConnect, ScriptShare, SenderBase, SMARTnet, Spectrum Expert, StackWise, The Fastest Way to Increase Your Internet Quotient, TransPath, WebEx, and the WebEx logo are registered trademarks of Cisco Systems, Inc. and/or its affiliates in the United States and certain other countries.

All other trademarks mentioned in this document or website are the property of their respective owners. The use of the word partner does not imply a partnership relationship between Cisco and any other company. (0907R)

Any Internet Protocol (IP) addresses used in this document are not intended to be actual addresses. Any examples, command display output, and figures included in the document are shown for illustrative purposes only. Any use of actual IP addresses in illustrative content is unintentional and coincidental.

© 2008-2009 Cisco Systems, Inc. All rights reserved.

Send comments about documentation to mxe-doc@cisco.com.