



CHAPTER 1

Welcome [to DMS-Admin]

Revised: April 4, 2012
OL-15762-04

- [Concepts, page 1-1](#)
- [Procedures, page 1-4](#)
- [Reference, page 1-8](#)



We prepared this material with specific expectations of you.

- ✔ You will administer Cisco DMS.
-

Concepts

- [Glossary, page 1-2](#)
- [Logical Ports That Cisco DMS Components Use, page 1-2](#)

Glossary



Timesaver

Go to terms that start with... [[A](#) | [D](#)].

A

AAI *Appliance Administration Interface.* Text-based, menu-driven user interface and command shell on all Cisco DMS appliances. Administrators use AAI to set up, connect, and maintain an appliance.

D

[Return to Top](#)

DMS-Admin *Digital Media Suite Administration.* Web-based graphical user interface on a DMM appliance. Administrators use DMS-Admin to:

- Activate and monitor features throughout the full range of Cisco DMS products.
- Exchange information with network entities outside Cisco DMS.
- Centrally manage user accounts for Cisco DMS products.

Logical Ports That Cisco DMS Components Use

Make sure to keep these logical ports open to traffic exchanged among Cisco DMS components.

Port No.	From	To	Bidir?	Protocol	Description
20	Show and Share	deployment server	N	FTP	Show and Share server deploying content to content hosting location using FTP
20	DMM	DMP	N	FTP	DMM server deploying content to DMP using FTP
20	DMP	FTP server	Y	FTP	transfer of content files
21	Show and Share	deployment server	N	FTP	Show and Share server deploying content to content hosting location using FTP
21	DMM	DMP	N	FTP	DMM server deploying content to DMP using FTP
21	DMP	FTP server	Y	FTP	transfer of content files
22	Show and Share	deployment server	N	SFTP	Show and Share server deploying content to content hosting location using SFTP
22	DMM	DMP	N	SFTP	DMM server deploying content to DMP using SFTP
53	DMP	DNS server	N	DNS	DNS services
80	DME	Show and Share	N	HTTP	communication between Show and Share and DME
80	User	Show and Share	N	HTTP	user requesting content from Show and Share
80	User	deployment server	N	HTTP	user requesting content from external server
80	DMP	content server	N	HTTP	

Port No.	From	To	Bidir?	Protocol	Description
123	DMP	NTP server	Y	NTP	NTP services
139	DMP	content server	N	CIFS	CIFS services
161	SNMP client	DMM	N	SNMP	SNMP services
389	DMM	Active Directory (LDAP)	N	LDAP	user database creation or updates
443	Admin Client	DMP	N	SSL	
443	User	Show and Share	N	HTTPS	
443	User	DMM	N	HTTPS	
445	DMP	content server	N	CIFS	CIFS services
514	DMM	Show and Share	N	syslog	syslog services
514	DMP	syslog server	N	syslog	syslog services
554	User	deployment server	N	RTSP	User requesting WMV streaming from external Windows Media Streaming Server
554	DMP	content server	N	RTSP	DMP requesting WMV streaming from external Windows Media Streaming Server
636	DMM	Active Directory (LDAPS)	N	LDAPS	user database creation or updates
694	DMM primary	DMM secondary	Y		(UDP) Heartbeat for failover health monitoring
695	Show and Share primary	Show and Share secondary	Y		(UDP) Heartbeat for failover health monitoring
843	User	DMM	N		proof of play
1935	User	Show and Share	N	RTMP	User requesting Flash or H.264 streaming from Show and Share
1935	User	deployment server	N	RTMP	User requesting Flash or H.264 streaming from external Flash or H.264 streaming server
5432	DMM	Show and Share	Y	PostGres	PostGres between DMM and Show and Share
7777	Admin Client	DMP	N	SSL	
7777	DMM	DMP	Y	SSL	
7849	DMM primary	DMM secondary	Y		DRBD (failover)
7850	Show and Share primary	Show and Share secondary	Y		DRBD (failover)
8080	User	Show and Share	N	HTTP	User uploading content to Show and Share
8443	DMM	Show and Share	Y	HTTPS	DMM <--> Show and Share peering
8443	User	Show and Share	N	HTTPS	Access to the Show and Share secured GUI
9161			Y	SNMP	SNMP services
9999	DMM	Show and Share	Y		JMX communication
30865	All four nodes (Failover)	All four nodes (Failover)	Y	CSYNC	synchronize config files between nodes in a cluster (failover).

Port No.	From	To	Bidir?	Protocol	Description
45001	DMM	Show and Share	Y		inventory/deployment
46001	DMM	Show and Share	Y		inventory/deployment
61616	Show and Share	DMM	Y		Activemq
User Config	User	deployment server	N	HTTP	user requesting content from external server
User Config	DME	media server	Y	HTTP	signaling between DME and media server
User Config	DMP	content server	N	HTTP	

Legend

DME=Digital Media Encoder
DMM=Digital Media Manager
DMP=Digital Media Player

Procedures

- [Learn Your DMM Appliance Serial Number, page 1-4](#)
- [Start DMS-Admin, page 1-5](#)

Learn Your DMM Appliance Serial Number

**Caution**

You cannot obtain any Cisco DMS software feature licenses until you know your DMM appliance serial number.

Procedure**Step 1**

Use SSH (or a keyboard connected your DMM appliance) to log in to the **admin** account in AAI.

**Note**

You alone know the password for this account.

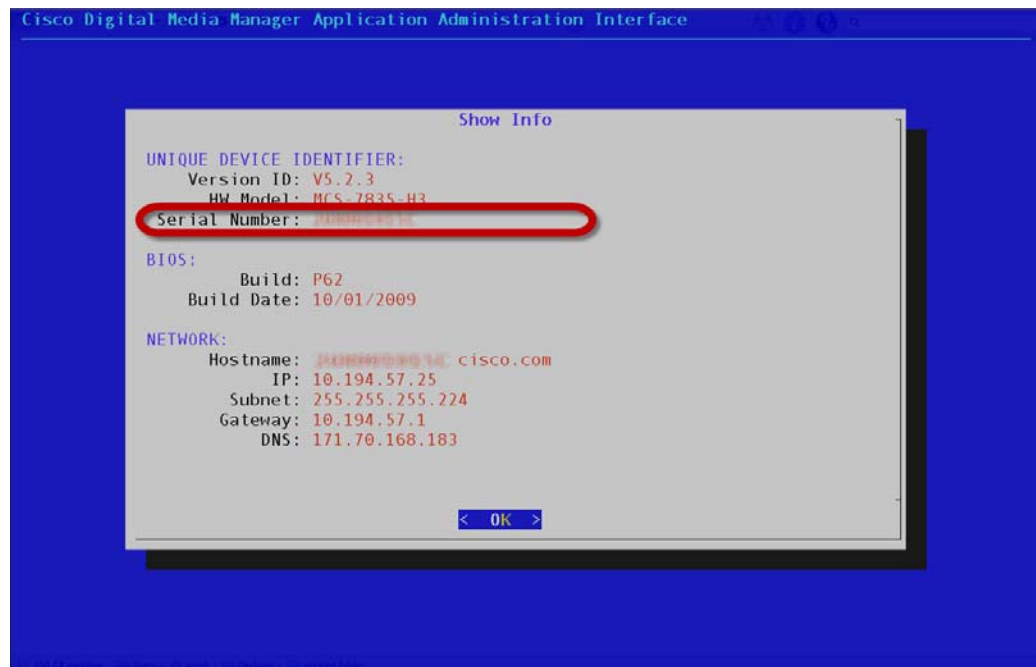
In the top-level menu for AAI, the SHOW_INFO option is highlighted by default.

SHOW INFO	Show system information.
BACKUP AND RESTORE	Back up and restore DMM configuration.
APPLIANCE CONTROL	Configure advance options
NETWORK SETTINGS	Configure network parameters.
DATE_TIME SETTINGS	Configure date and time
CERTIFICATE MANAGEMENT	Manage all certificates in the system
FAIL_OVER	Configure high availability parameters.

< OK >

< LOG OUT >

Step 2 Press **Enter** to load the Show Info screen.



Step 3 Write down the appliance serial number that AAI shows to you.

Step 4 Stop. You have completed this procedure.

Start DMS-Admin

Procedure

Step 1 Point your browser at your DMM appliance.

- Use **HTTPS** and specify port **8443**

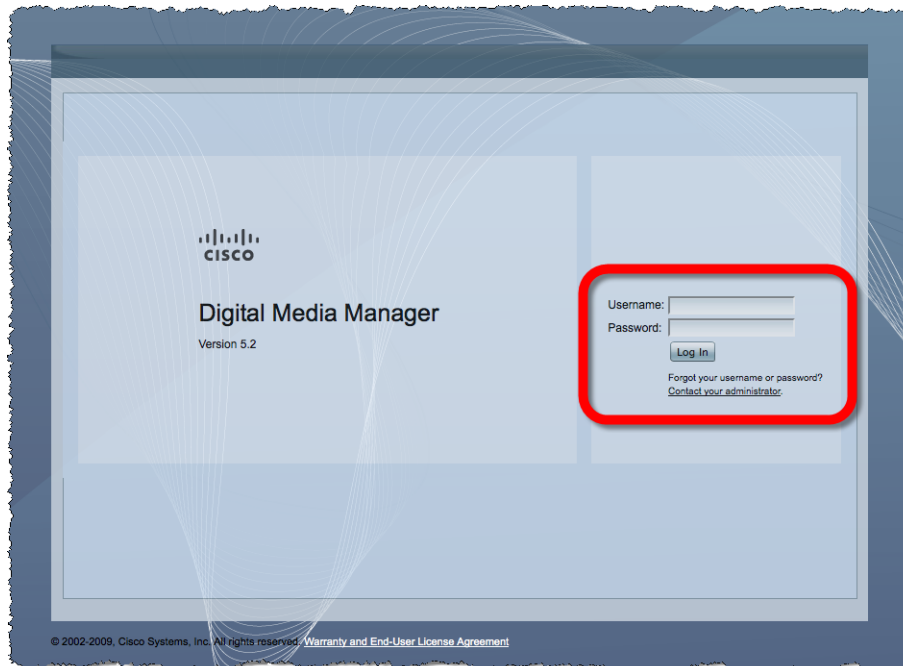
OR

Use **HTTP** and specify port **8080**—*which redirects immediately to the secured HTTPS connection.*

- Be sure to use the fully qualified appliance DNS name and not merely its IP address.

For example, `https://dmm.example.com:8443`.

Step 2 When the login page loads, sign in to your account.

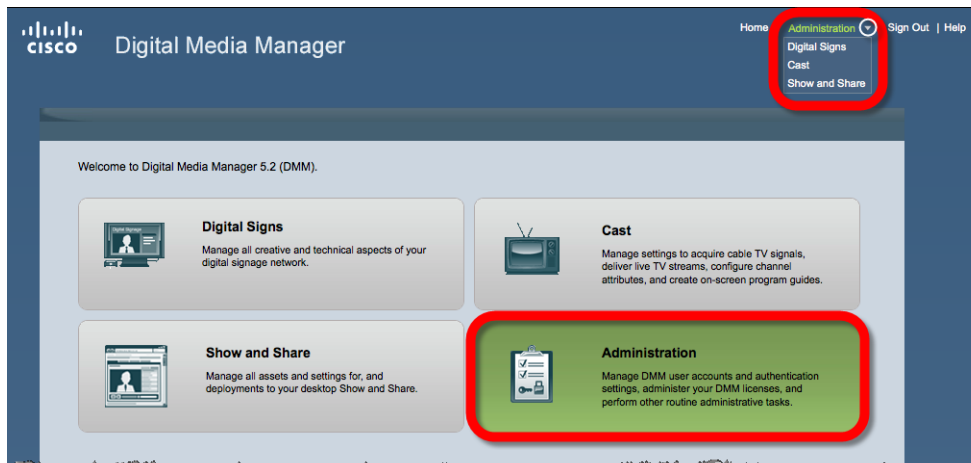


Note

The appearance of the login screen can differ from this illustration. Its actual appearance depends on which Cisco DMS software release you use and which user authentication method (embedded, LDAP, or federation) Cisco DMS uses in your network.

Step 3 Click **Log In**.

Step 4 Choose **Administration** from the global navigation or click **Administration** on the landing page.



What happens next depends on what happened before.

- Is your appliance factory-new or recently restored?*

No licenses are installed.
We take you first to the page where you can install a license key.
- Have you activated even one licensed feature?*

At least one license is installed.
We take you first to the DMS-Admin Dashboard, whose gauges can inform you at a glance.

Step 5 Stop. You have completed this procedure.

Related Topics

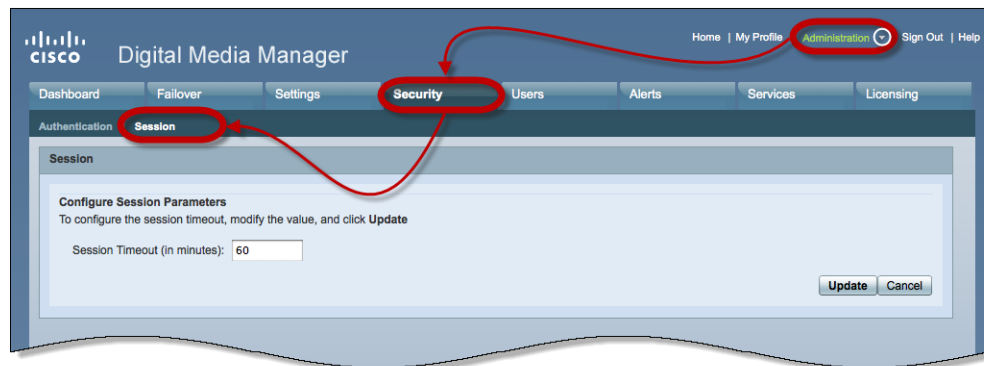
- [Chapter 2, “DMS-Admin Dashboard”](#)
- [Chapter 3, “Licenses”](#)

Set a User Session Timeout for Components of Cisco DMS

We log inactive users out of their sessions automatically after an interval, which you set, has elapsed. This interval applies to all users without exception.

Procedure

Step 1 Choose **Administration > Security > Session**.



Step 2 Use the Session Timeout (in minutes) field to enter or edit a session timeout value.

Step 3 Click **Update**.

Step 4 Stop. You have completed this procedure.

Reference

- [FAQs and Troubleshooting, page 1-8](#)

FAQs and Troubleshooting

- [FAQs, page 1-8](#)

FAQs

Q. What might prevent me from logging in?

A. Check the following, and then try again to log in.

- Is your username wrong or mistyped?
- Is your password wrong, mistyped, or expired?
- Is your user account suspended?
- Is your user account locked after too many failed login attempts?