



# Overview of Cisco Host Upgrade Utility

This chapter contains the following topics:

- [About the Cisco Host Upgrade Utility, on page 1](#)
- [License Agreement, on page 1](#)
- [Understanding the HUU User Interface, on page 1](#)

## About the Cisco Host Upgrade Utility

The Cisco Host Upgrade Utility (hereafter referred to as HUU) is a tool that you can use to upgrade the firmware on a Cisco UCS C-Series server. HUU includes an option that enables you to download a container for a selected platform on a Windows operating system. You can download the container from the HUU ISO by burning the ISO on a physical media. When you insert the physical media into the server, auto-run launches an Index.html page in your browser. This index.html page provides access to the location from where you can download the container. You also can download the container from the ISO using the standard ISO extraction utilities.

HUU provides a user interface where you can choose the firmware components that need an upgrade. In the previous releases (1.4(x)), HUU provided a text menu from which you could choose the components and initiate the upgrade. From version 1.5(x) onwards, HUU provides a graphical user interface to perform an upgrade.

For information about the components supported and their firmware versions for various servers in a release, see the [Cisco UCS C-Series Integrated Management Controller Firmware Files, Release 2.0](#).

For information about upgrading the firmware on C-Series servers using non-interactive HUU, see the *Cisco UCS Rack-Mount Servers Cisco IMC XML API Programmer Guide*.

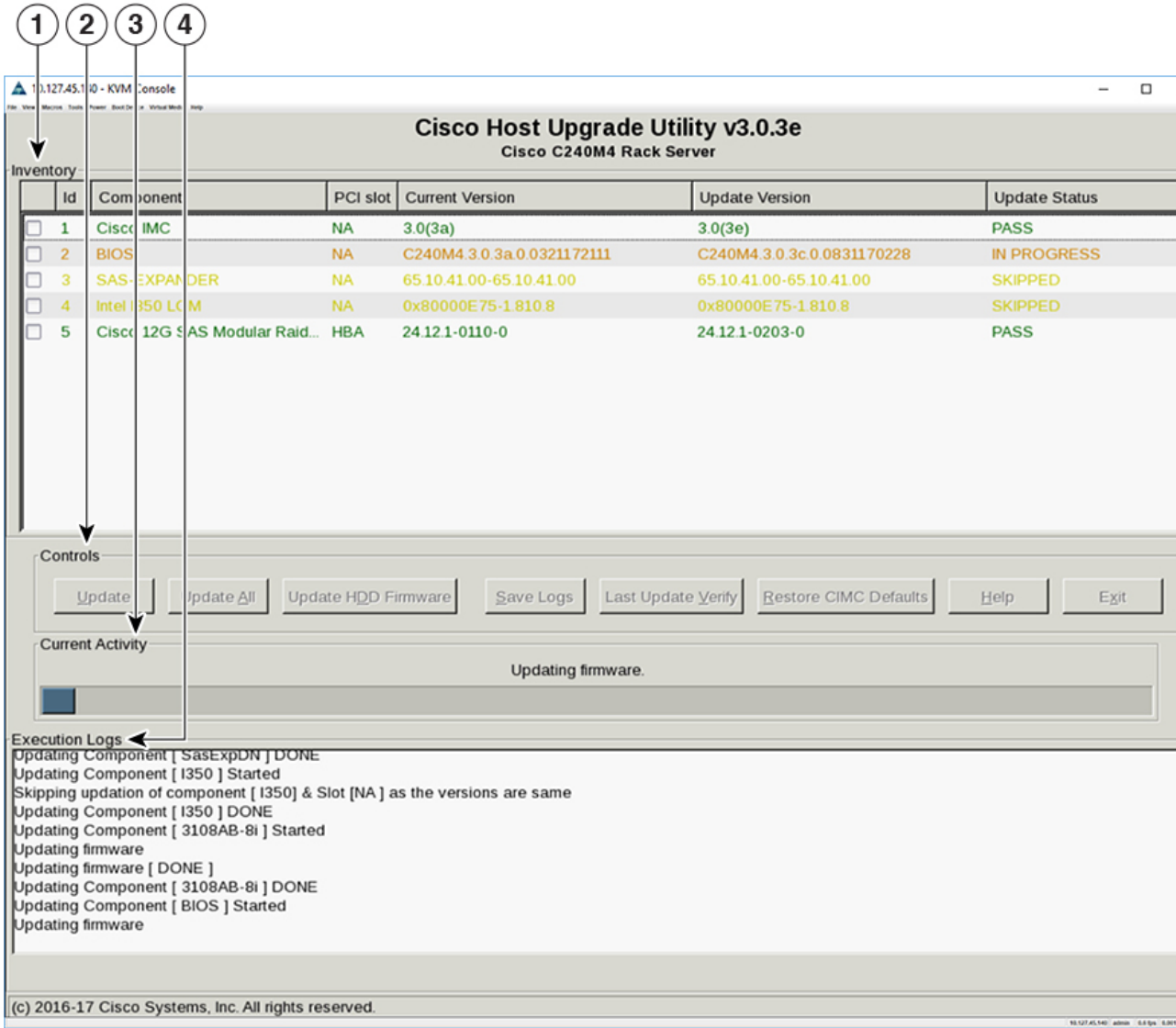
## License Agreement

After the HUU boots, the first interface that appears is the End User License Agreement. Choose **I Agree** to agree to this license.

## Understanding the HUU User Interface

This section provides a brief introduction to the UI elements in the various sections of the HUU user interface.

Figure 1: HUU User Interface



UI element	Description
<b>1. Inventory section</b>	
<b>Id</b>	Displays the serial number of the rows of the components.
<b>Component</b>	Displays the list of components of a server.
<b>PCI Slot</b>	Display the PCI slot information for the PCI adapter components.
<b>Current Version</b>	Displays the current version of the firmware for each of the listed components.

UI element	Description
<b>Update Version</b>	Displays the version of the firmware that is available for upgrade.
<b>Update Status</b>	Displays the status of the update for each element in the list while an update is in progress.
<b>2. Controls section</b>	
<b>Update</b>	This button is used to initiate the firmware update for the selected components.
<b>Update All</b>	This button is used to initiate the firmware update of all the available components for a server.
<b>Update HDD Firmware</b>	This button is used to initiate firmware update on specific hard drives that support new firmware.
<b>Save Logs</b>	This button is used to save the log files that contain a detailed status of the update to an external USB device connected to the server physically or through the KVM vMedia. When an error occurs during an update, you are prompted to save the logs. The Save Logs feature is useful for troubleshooting.
<b>Last Update Verify</b>	This button is used to compare the previously updated firmware version for each component that was updated using the HUU with the current version of the firmware on the components.
<b>Restore Chassis Defaults</b>	This button is used to restore the CMC settings for the S3260 servers to factory defaults. <b>Note</b> This option is available only for S3260 servers.
<b>Restore Cisco IMC Defaults</b>	This button is used to restore the Cisco IMC settings to factory defaults. <b>Note</b> This option is available only for non S3260 servers.
<b>Exit</b>	This button is used to exit from the HUU. If you have updated the BMC or CMC when you click <b>Exit</b> , BMC or CMC gets activated.
<b>3. Current Activity section</b>	This section indicates the status of an update.
<b>4. Execution Logs section</b>	This section provides a detailed log of the various activities and their status while an update is in progress.

